

Data Path : Z:\pestpcbsrv\HPCHEM1\ECD_Q\Data\PQ040621\
 Data File : PQ052870.D
 Signal(s) : Signal #1: ECD1A.ch Signal #2: ECD2B.ch
 Acq On : 06 Apr 2021 15:35
 Operator : DD\AJ
 Sample : AR1242CCC400
 Misc :
 ALS Vial : 4 Sample Multiplier: 1

Instrument :
 ECD_Q
 ClientSampleId :
 AR1242379

Integration File signal 1: autoint1.e
 Integration File signal 2: autoint2.e
 Quant Time: Apr 07 06:51:47 2021
 Quant Method : Z:\pestpcbsrv\HPCHEM1\ECD_Q\Method\PQ031721CLP.M
 Quant Title : GC EXTRACTABLES
 QLast Update : Thu Mar 18 06:24:02 2021
 Response via : Initial Calibration
 Integrator: ChemStation

Volume Inj. : 1 µl
 Signal #1 Phase : ZB MR1 Signal #2 Phase: ZB MR2
 Signal #1 Info : 30Mx0.32mmx 0.5µm Signal #2 Info : 30M x 0.32mm x 0.25µm

Compound	RT#1	RT#2	Resp#1	Resp#2	ng/ml	ng/ml

System Monitoring Compounds						
1) SA Tetrachlo...	5.228	4.244	538.0E6	206.9E6	23.345	21.633
2) SA Decachlor...	11.419	9.584	935.0E6	399.9E6	37.812	40.405
Target Compounds						
3) L1 AR-1016-1	6.551	5.500	335.6E6	141.6E6	391.127	365.430
4) L1 AR-1016-2	6.575	5.520	503.3E6	204.2E6	394.362	367.996
5) L1 AR-1016-3	6.642	5.713	304.2E6	105.2E6	401.295	369.990
6) L1 AR-1016-4	6.750	5.763	251.5E6	79712465	395.267	355.169
7) L1 AR-1016-5	7.063	5.994	244.6E6	109.0E6	401.381	379.863
8) L2 AR-1221-1	5.472	4.499	33788347	12410362	138.794	116.096
9) L2 AR-1221-2	5.577	4.600	40705877	15916763	239.797	212.966
10) L2 AR-1221-3	5.665	4.689	175.9E6	71384112	304.880	281.238
11) L3 AR-1232-1	5.665	4.689	175.9E6	71384112	375.117	340.889
12) L3 AR-1232-2	6.256	5.520	242.3E6	204.2E6	958.248	875.175
13) L3 AR-1232-3	6.575	5.713	503.3E6	105.2E6	935.361	898.992
14) L3 AR-1232-4	6.750	5.808	251.5E6	100.5E6	938.702	1011.082
15) L3 AR-1232-5	6.845	5.994	205.0E6	109.0E6	1044.164	986.746
16) L4 AR-1242-1	6.551	5.500	335.6E6	141.6E6	421.030	400.994
17) L4 AR-1242-2	6.575	5.520	503.3E6	204.2E6	427.700	407.484
18) L4 AR-1242-3	6.642	5.713	304.2E6	105.2E6	430.508	404.774
19) L4 AR-1242-4	6.750	5.808	251.5E6	100.5E6	428.106	409.176
20) L4 AR-1242-5	7.532	6.372	268.0E6	134.5E6	399.952	387.079
21) L5 AR-1248-1	6.551	5.500	335.6E6	141.6E6	611.519	579.210
22) L5 AR-1248-2	6.845	5.763	205.0E6	79712465	263.234	240.224
23) L5 AR-1248-3	7.063	5.808	244.6E6	100.5E6	274.347	292.427
24) L5 AR-1248-4	7.492	5.994	250.1E6	109.0E6	233.786	262.974
25) L5 AR-1248-5	7.532	6.416	268.0E6	111.0E6	252.121	248.850
26) L6 AR-1254-1	7.461	6.372	187.8E6	134.5E6	138.227	149.956
27) L6 AR-1254-2	7.698	6.531	219.0E6	32544187	102.626	41.083 #
28) L6 AR-1254-3	8.073	6.952	83378472	41215093	35.572	31.779
29) L6 AR-1254-4	8.368	7.191	62821867	35565184	36.369	39.967
30) L6 AR-1254-5	8.796	7.620	17543983	9997226	9.563	8.357
31) L7 AR-1260-1	8.238	7.102	8840534	16169320	8.205	27.970 #
32) L7 AR-1260-2	8.497	7.285	15710179	5540784	11.956	6.947 #
33) L7 AR-1260-3	8.857	7.439	3707572	4760356	3.693	7.222 #
34) L7 AR-1260-4	9.104	7.962f	7126191	3272127	6.236	5.803
35) L7 AR-1260-5	9.455	8.166	2578930	720501	1.084	0.471 #
36) L8 AR-1262-1	8.857	7.620	3707572	9997226	2.043	19.849 #
37) L8 AR-1262-2	9.455	8.166	2578930	720501	0.770	0.346 #
38) L8 AR-1262-3	9.815	8.523f	2010711	859709	0.906	1.064
39) L8 AR-1262-4	9.815f	8.523	2010711	859709	1.151	0.617 #
41) L9 AR-1268-1	9.815	8.523f	2010711	859709	0.512	0.362 #
42) L9 AR-1268-2	0.000	8.523	0	859709	N.D.	0.423 #
43) L9 AR-1268-3	10.135	0.000	1938933	0	0.607	N.D. #

Data Path : Z:\pestpcbsrv\HPCHEM1\ECD_Q\Data\PQ040621\
Data File : PQ052870.D
Signal(s) : Signal #1: ECD1A.ch Signal #2: ECD2B.ch
Acq On : 06 Apr 2021 15:35
Operator : DD\AJ
Sample : AR1242CCC400
Misc :
ALS Vial : 4 Sample Multiplier: 1

Instrument :
ECD_Q
ClientSampleId :
AR1242379

Integration File signal 1: autoint1.e
Integration File signal 2: autoint2.e
Quant Time: Apr 07 06:51:47 2021
Quant Method : Z:\pestpcbsrv\HPCHEM1\ECD_Q\Method\PQ031721CLP.M
Quant Title : GC EXTRACTABLES
QLast Update : Thu Mar 18 06:24:02 2021
Response via : Initial Calibration
Integrator: ChemStation

Volume Inj. : 1 µl
Signal #1 Phase : ZB MR1 Signal #2 Phase: ZB MR2
Signal #1 Info : 30Mx0.32mmx 0.5µm Signal #2 Info : 30M x 0.32mm x 0.25µm

	Compound	RT#1	RT#2	Resp#1	Resp#2	ng/ml	ng/ml
45)	L9 AR-1268-5	11.054	9.323	6806427	2619814	0.635	0.543

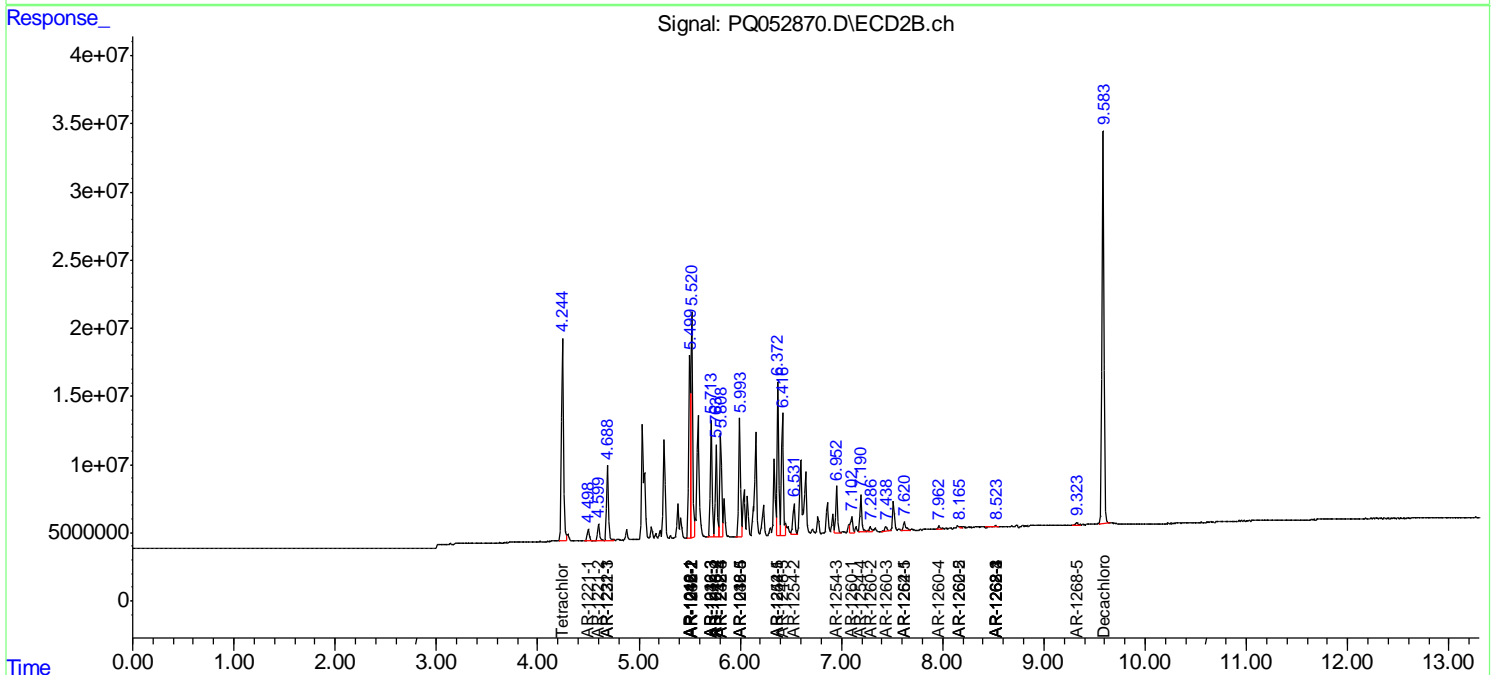
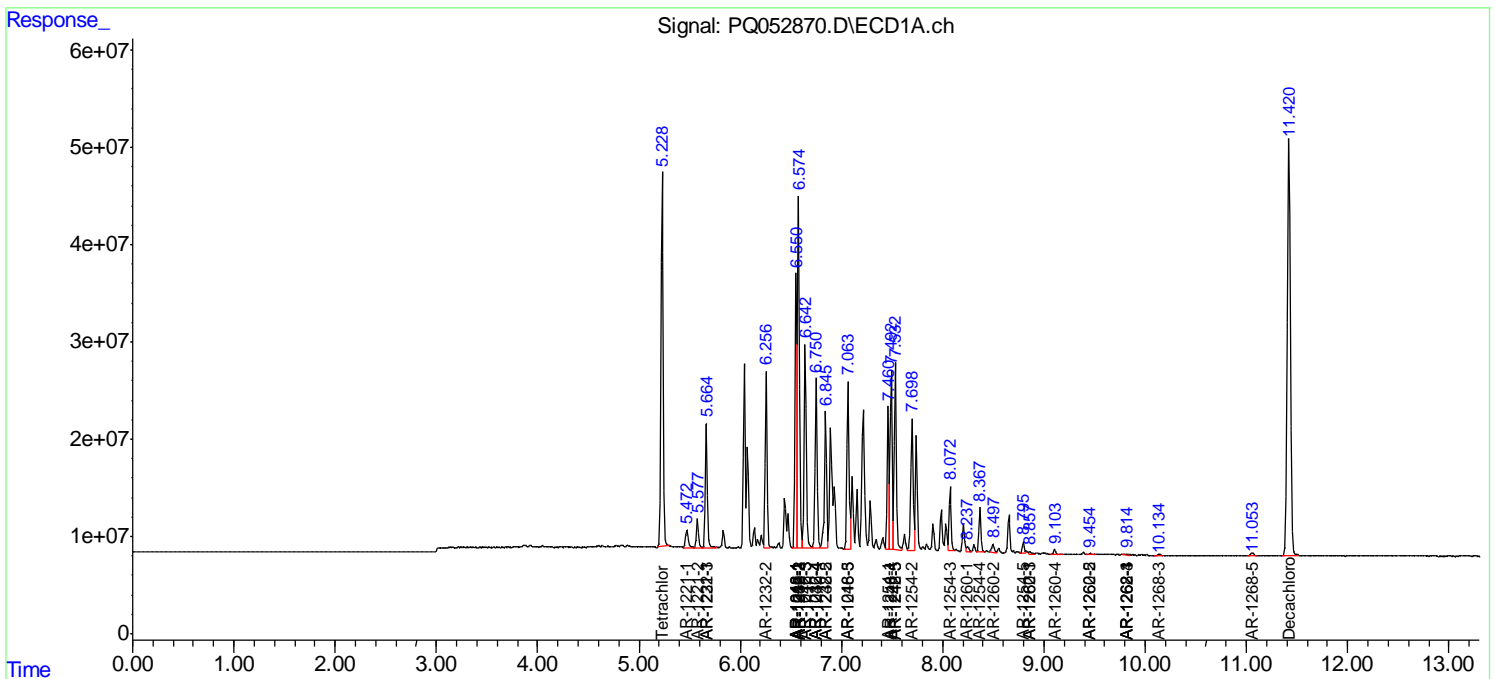
(f)=RT Delta > 1/2 Window (#)=Amounts differ by > 25% (m)=manual int.

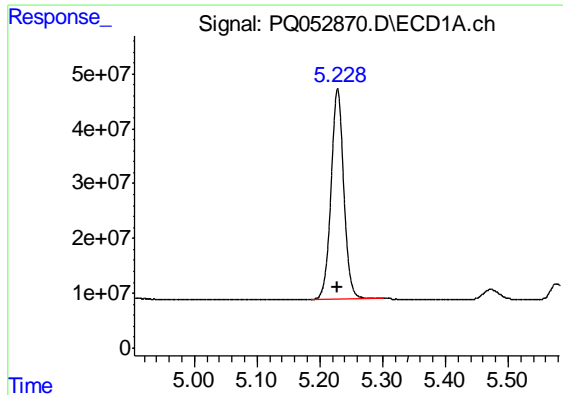
Data Path : Z:\pestpcbsrv\HPCHEM1\ECD_Q\Data\PQ040621\
 Data File : PQ052870.D
 Signal(s) : Signal #1: ECD1A.ch Signal #2: ECD2B.ch
 Acq On : 06 Apr 2021 15:35
 Operator : DD\AJ
 Sample : AR1242CCC400
 Misc :
 ALS Vial : 4 Sample Multiplier: 1

Instrument :
 ECD_Q
 ClientSampled :
 AR1242379

Integration File signal 1: autoint1.e
 Integration File signal 2: autoint2.e
 Quant Time: Apr 07 06:51:47 2021
 Quant Method : Z:\pestpcbsrv\HPCHEM1\ECD_Q\Method\PQ031721CLP.M
 Quant Title : GC EXTRACTABLES
 QLast Update : Thu Mar 18 06:24:02 2021
 Response via : Initial Calibration
 Integrator: ChemStation

Volume Inj. : 1 µl
 Signal #1 Phase : ZB MR1 Signal #2 Phase: ZB MR2
 Signal #1 Info : 30Mx0.32mmx 0.5µm Signal #2 Info : 30M x 0.32mm x 0.25µm

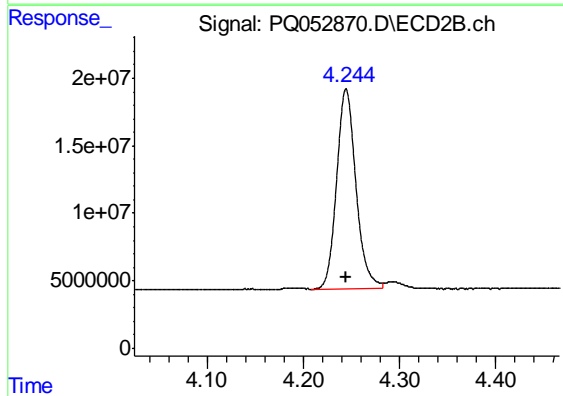




#1 Tetrachloro-m-xylene

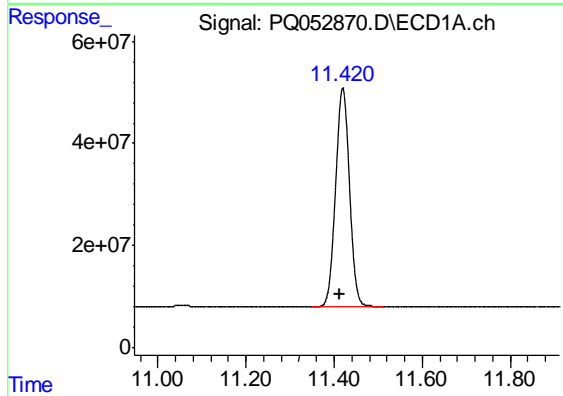
R.T.: 5.228 min
 Delta R.T.: 0.001 min
 Response: 538009310
 Conc: 23.34 ng/ml

Instrument :
 ECD_Q
 ClientSampleId :
 AR1242379



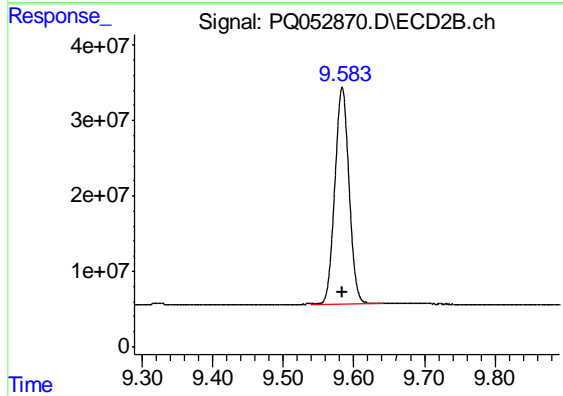
#1 Tetrachloro-m-xylene

R.T.: 4.244 min
 Delta R.T.: 0.000 min
 Response: 206909806
 Conc: 21.63 ng/ml



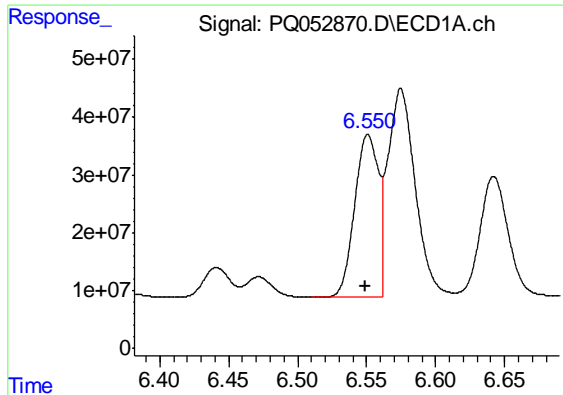
#2 Decachlorobiphenyl

R.T.: 11.419 min
 Delta R.T.: 0.007 min
 Response: 935041392
 Conc: 37.81 ng/ml



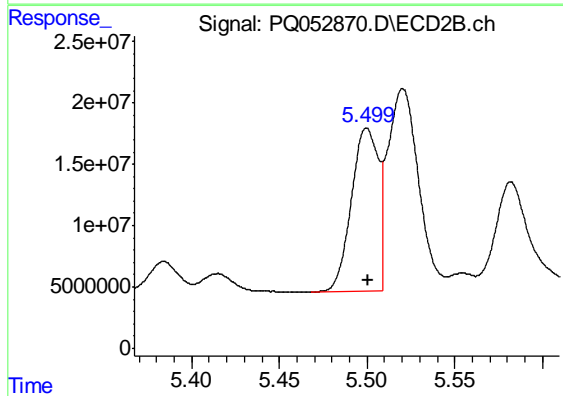
#2 Decachlorobiphenyl

R.T.: 9.584 min
 Delta R.T.: 0.000 min
 Response: 399852803
 Conc: 40.40 ng/ml

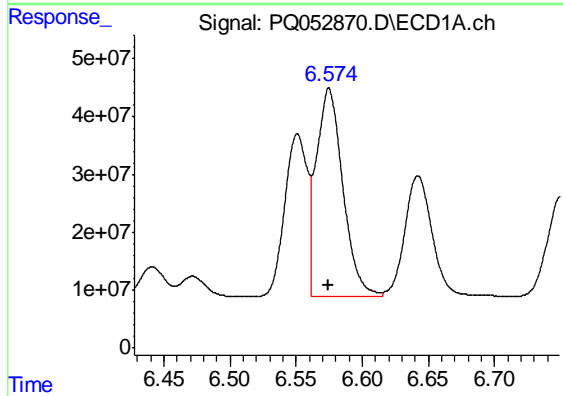


#3 AR-1016-1
 R.T.: 6.551 min
 Delta R.T.: 0.002 min
 Response: 335597731
 Conc: 391.13 ng/ml

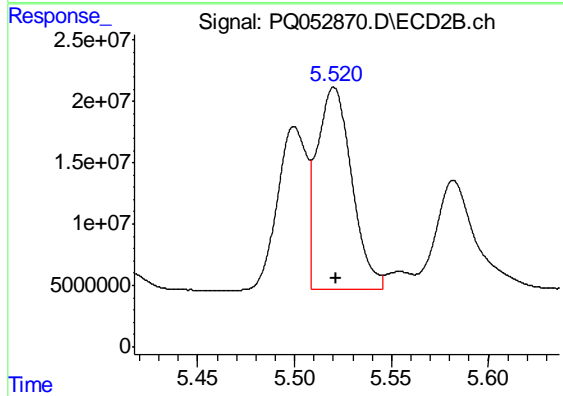
Instrument :
 ECD_Q
 ClientSampleId :
 AR1242379



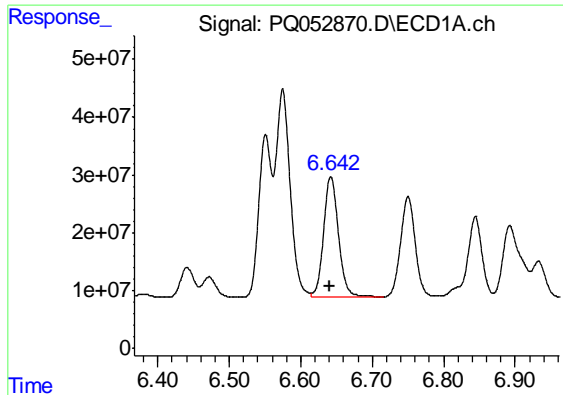
#3 AR-1016-1
 R.T.: 5.500 min
 Delta R.T.: 0.000 min
 Response: 141628707
 Conc: 365.43 ng/ml



#4 AR-1016-2
 R.T.: 6.575 min
 Delta R.T.: 0.000 min
 Response: 503309600
 Conc: 394.36 ng/ml



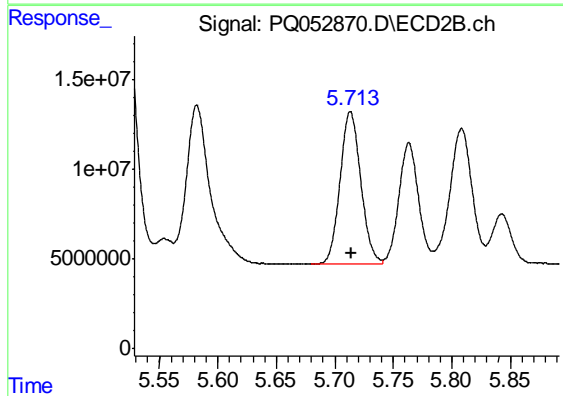
#4 AR-1016-2
 R.T.: 5.520 min
 Delta R.T.: 0.000 min
 Response: 204170930
 Conc: 368.00 ng/ml



#5 AR-1016-3

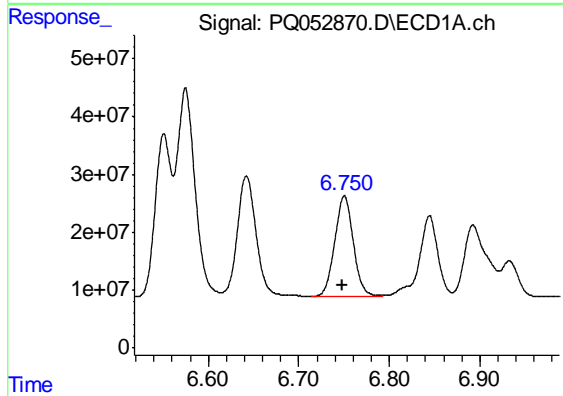
R.T.: 6.642 min
Delta R.T.: 0.001 min
Response: 304155378
Conc: 401.29 ng/ml

Instrument :
ECD_Q
ClientSampleId :
AR1242379



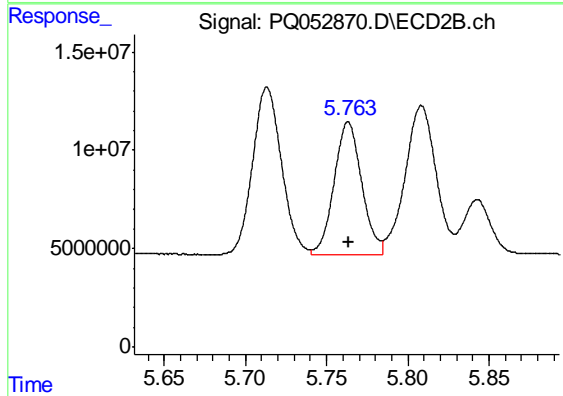
#5 AR-1016-3

R.T.: 5.713 min
Delta R.T.: 0.000 min
Response: 105205145
Conc: 369.99 ng/ml



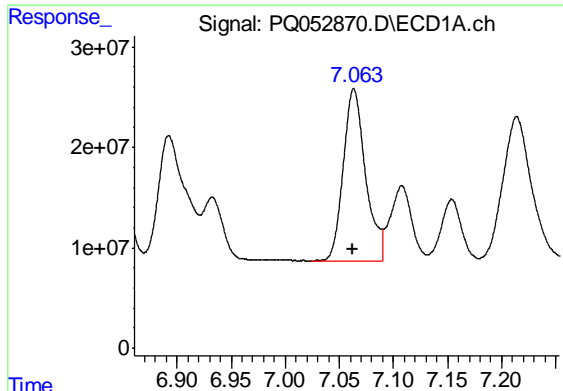
#6 AR-1016-4

R.T.: 6.750 min
Delta R.T.: 0.002 min
Response: 251534156
Conc: 395.27 ng/ml



#6 AR-1016-4

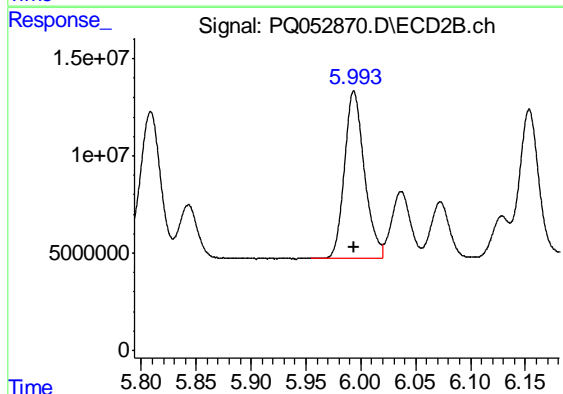
R.T.: 5.763 min
Delta R.T.: 0.000 min
Response: 79712465
Conc: 355.17 ng/ml



#7 AR-1016-5

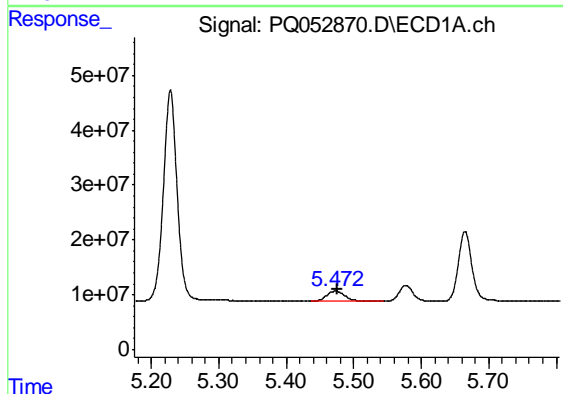
R.T.: 7.063 min
Delta R.T.: 0.001 min
Response: 244620200
Conc: 401.38 ng/ml

Instrument :
ECD_Q
ClientSampled :
AR1242379



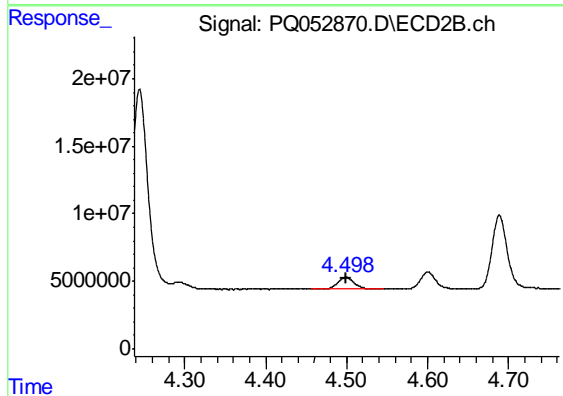
#7 AR-1016-5

R.T.: 5.994 min
Delta R.T.: 0.000 min
Response: 108964286
Conc: 379.86 ng/ml



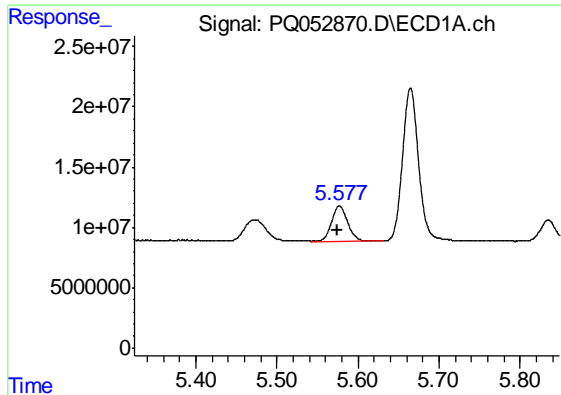
#8 AR-1221-1

R.T.: 5.472 min
Delta R.T.: -0.003 min
Response: 33788347
Conc: 138.79 ng/ml



#8 AR-1221-1

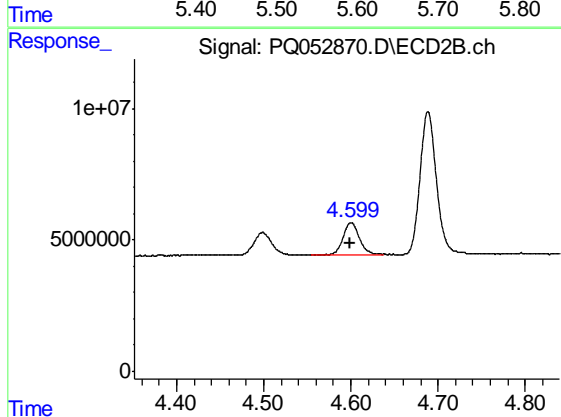
R.T.: 4.499 min
Delta R.T.: 0.000 min
Response: 12410362
Conc: 116.10 ng/ml



#9 AR-1221-2

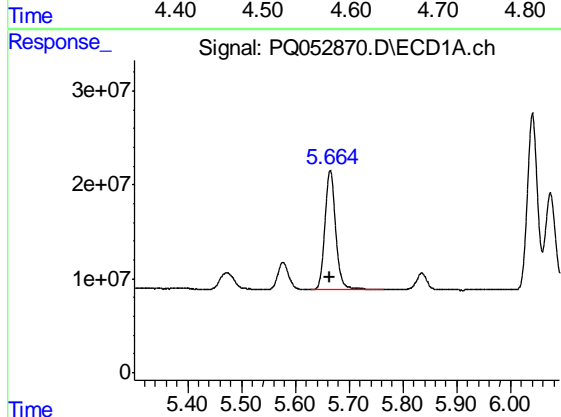
R.T.: 5.577 min
 Delta R.T.: 0.002 min
 Response: 40705877
 Conc: 239.80 ng/ml

Instrument :
 ECD_Q
 ClientSampleId :
 AR1242379



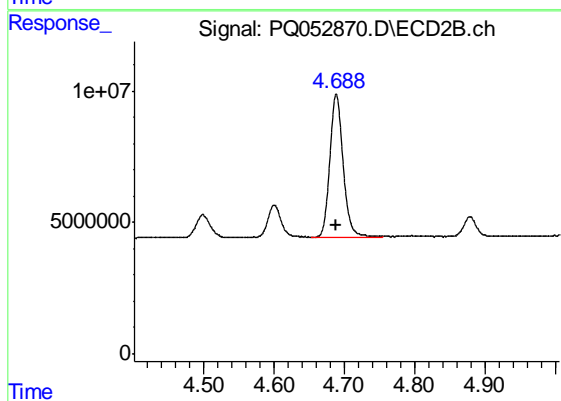
#9 AR-1221-2

R.T.: 4.600 min
 Delta R.T.: 0.001 min
 Response: 15916763
 Conc: 212.97 ng/ml



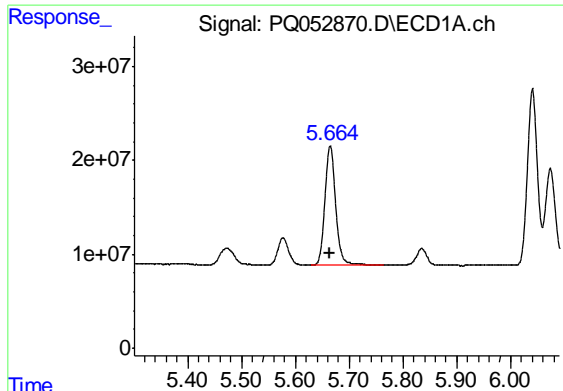
#10 AR-1221-3

R.T.: 5.665 min
 Delta R.T.: 0.002 min
 Response: 175910163
 Conc: 304.88 ng/ml



#10 AR-1221-3

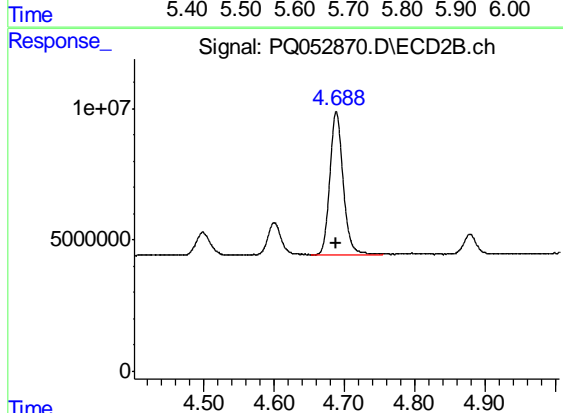
R.T.: 4.689 min
 Delta R.T.: 0.000 min
 Response: 71384112
 Conc: 281.24 ng/ml



#11 AR-1232-1

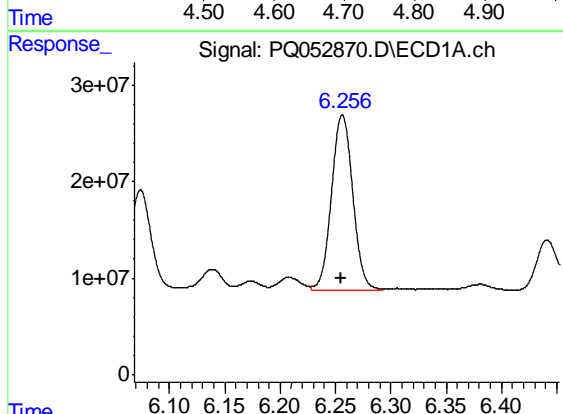
R.T.: 5.665 min
 Delta R.T.: 0.002 min
 Response: 175910163
 Conc: 375.12 ng/ml

Instrument :
 ECD_Q
 ClientSampleId :
 AR1242379



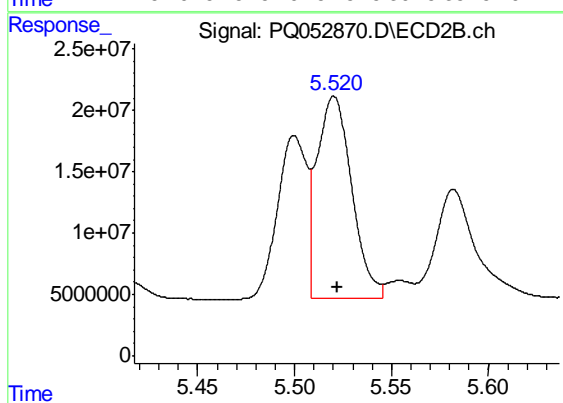
#11 AR-1232-1

R.T.: 4.689 min
 Delta R.T.: 0.000 min
 Response: 71384112
 Conc: 340.89 ng/ml



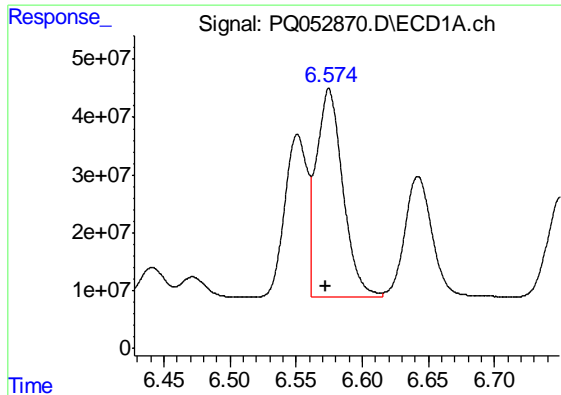
#12 AR-1232-2

R.T.: 6.256 min
 Delta R.T.: 0.001 min
 Response: 242336839
 Conc: 958.25 ng/ml



#12 AR-1232-2

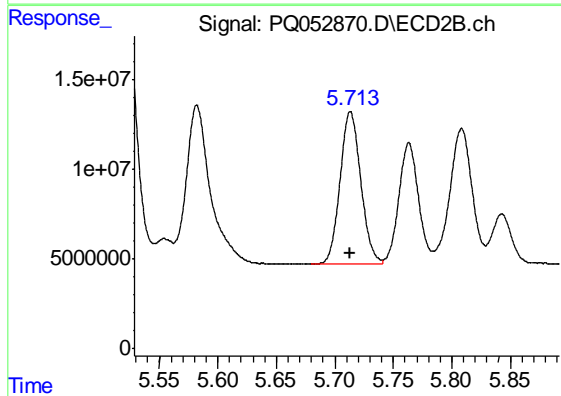
R.T.: 5.520 min
 Delta R.T.: -0.001 min
 Response: 204170930
 Conc: 875.17 ng/ml



#13 AR-1232-3

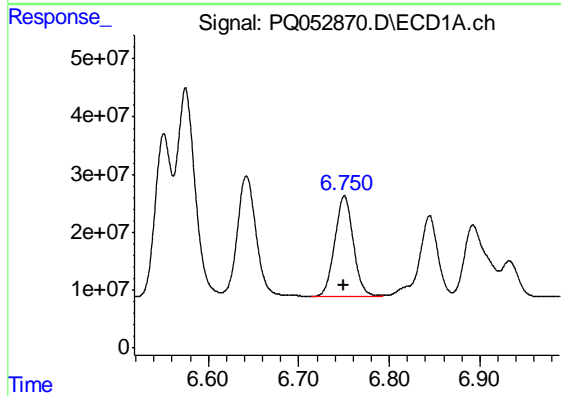
R.T.: 6.575 min
Delta R.T.: 0.002 min
Response: 503309600
Conc: 935.36 ng/ml

Instrument :
ECD_Q
ClientSampled :
AR1242379



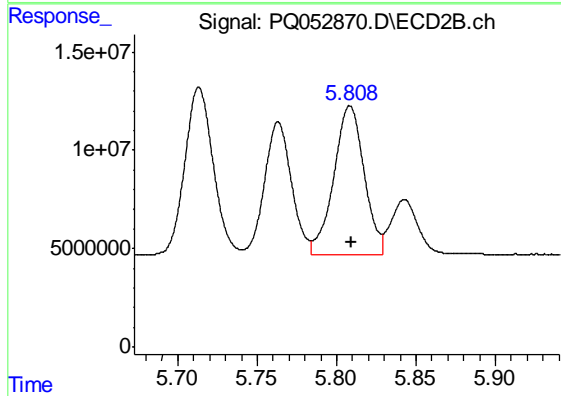
#13 AR-1232-3

R.T.: 5.713 min
Delta R.T.: 0.000 min
Response: 105205145
Conc: 898.99 ng/ml



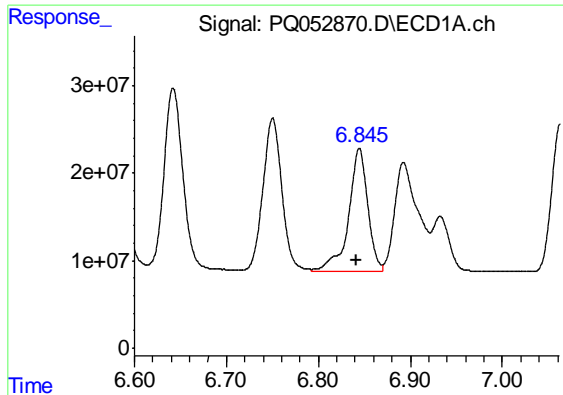
#14 AR-1232-4

R.T.: 6.750 min
Delta R.T.: 0.001 min
Response: 251534156
Conc: 938.70 ng/ml



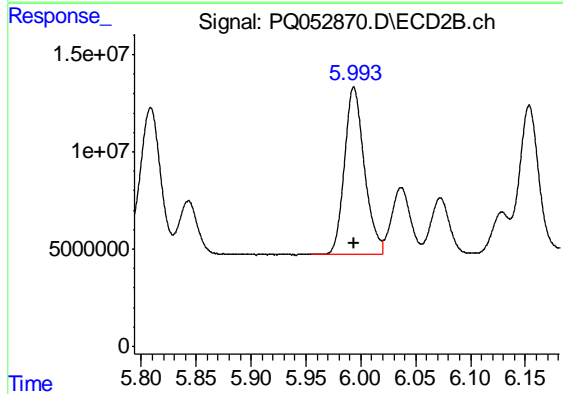
#14 AR-1232-4

R.T.: 5.808 min
Delta R.T.: 0.000 min
Response: 100462157
Conc: 1011.08 ng/ml

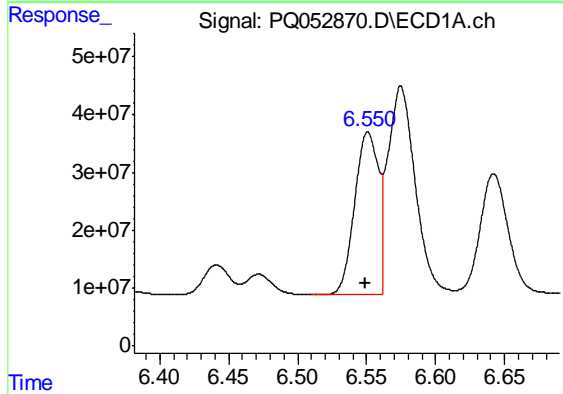


#15 AR-1232-5
 R.T.: 6.845 min
 Delta R.T.: 0.003 min
 Response: 205029344
 Conc: 1044.16 ng/ml

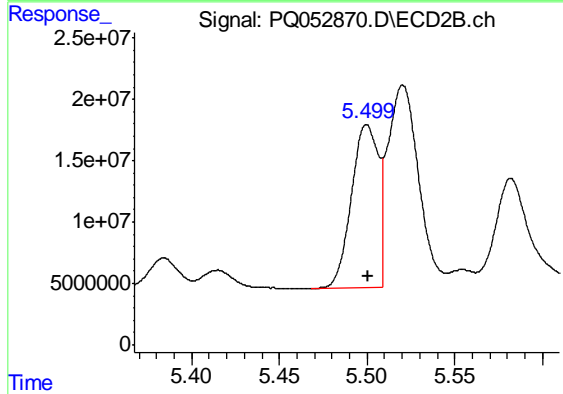
Instrument :
 ECD_Q
 ClientSampleId :
 AR1242379



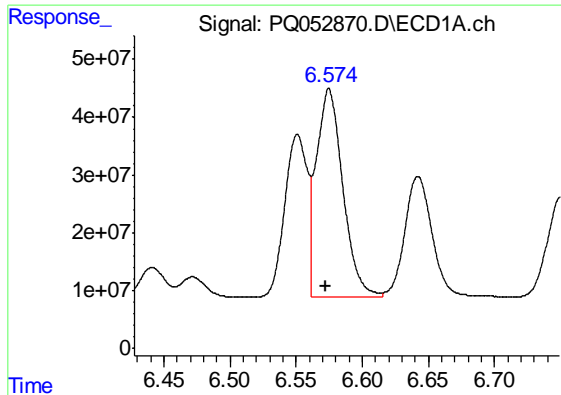
#15 AR-1232-5
 R.T.: 5.994 min
 Delta R.T.: 0.000 min
 Response: 108964286
 Conc: 986.75 ng/ml



#16 AR-1242-1
 R.T.: 6.551 min
 Delta R.T.: 0.002 min
 Response: 335597731
 Conc: 421.03 ng/ml



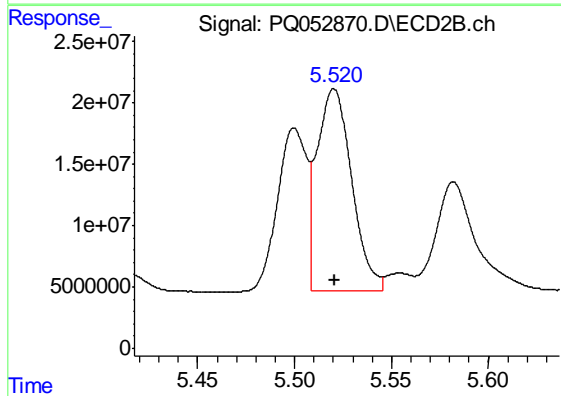
#16 AR-1242-1
 R.T.: 5.500 min
 Delta R.T.: 0.000 min
 Response: 141628707
 Conc: 400.99 ng/ml



#17 AR-1242-2

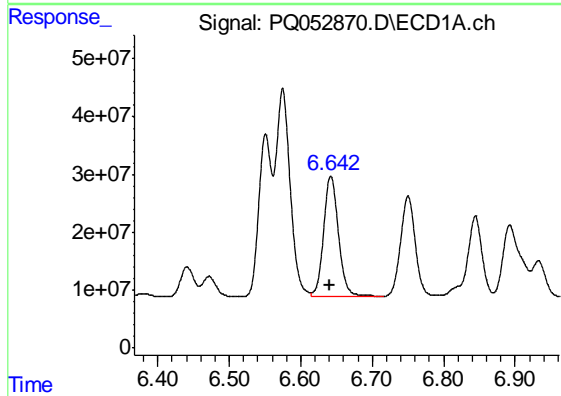
R.T.: 6.575 min
 Delta R.T.: 0.002 min
 Response: 503309600
 Conc: 427.70 ng/ml

Instrument :
 ECD_Q
 ClientSampleId :
 AR1242379



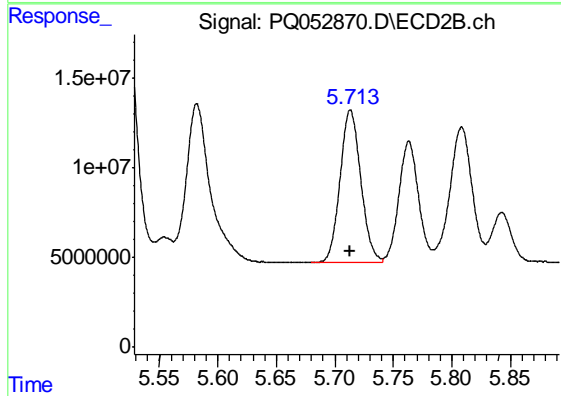
#17 AR-1242-2

R.T.: 5.520 min
 Delta R.T.: 0.000 min
 Response: 204170930
 Conc: 407.48 ng/ml



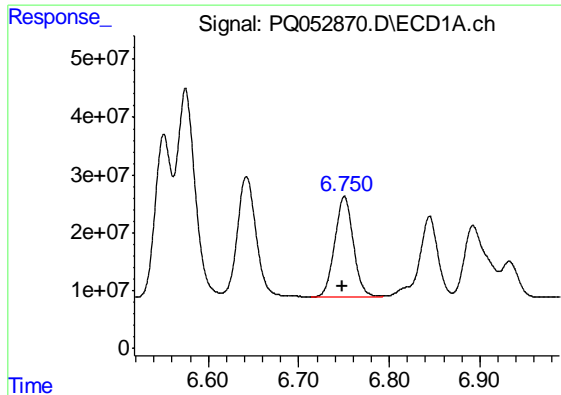
#18 AR-1242-3

R.T.: 6.642 min
 Delta R.T.: 0.002 min
 Response: 304155378
 Conc: 430.51 ng/ml



#18 AR-1242-3

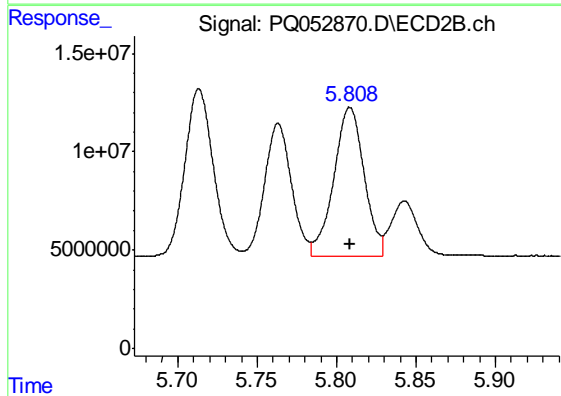
R.T.: 5.713 min
 Delta R.T.: 0.000 min
 Response: 105205145
 Conc: 404.77 ng/ml



#19 AR-1242-4

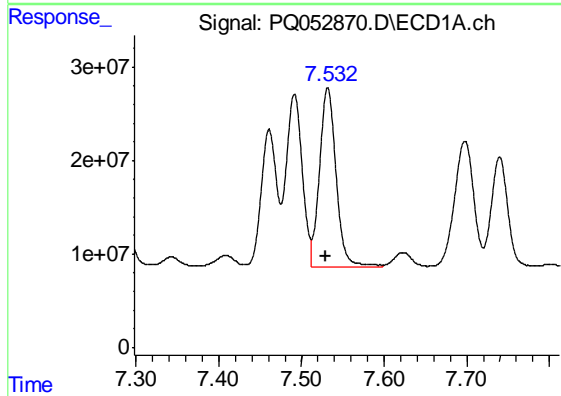
R.T.: 6.750 min
 Delta R.T.: 0.002 min
 Response: 251534156
 Conc: 428.11 ng/ml

Instrument :
 ECD_Q
 ClientSampleId :
 AR1242379



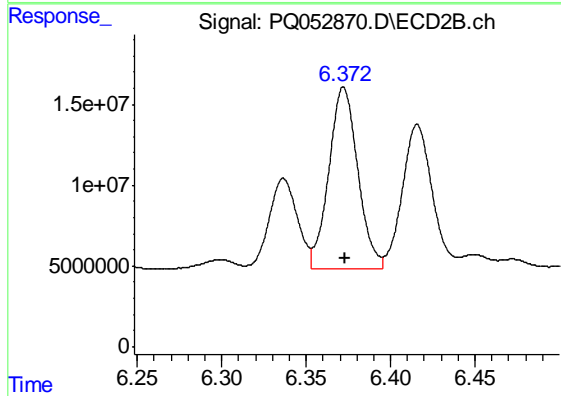
#19 AR-1242-4

R.T.: 5.808 min
 Delta R.T.: 0.000 min
 Response: 100462157
 Conc: 409.18 ng/ml



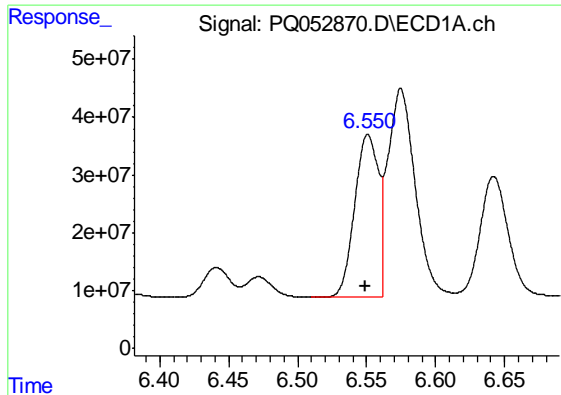
#20 AR-1242-5

R.T.: 7.532 min
 Delta R.T.: 0.002 min
 Response: 267962549
 Conc: 399.95 ng/ml



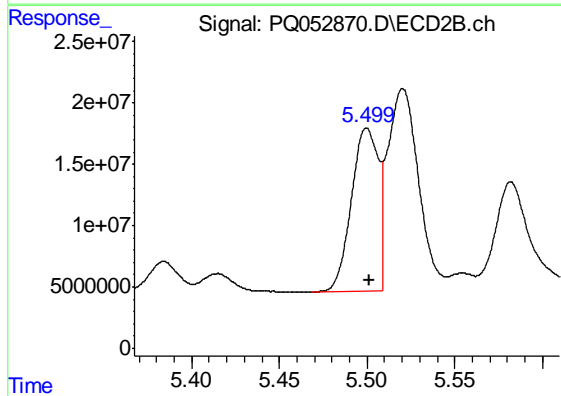
#20 AR-1242-5

R.T.: 6.372 min
 Delta R.T.: 0.000 min
 Response: 134482772
 Conc: 387.08 ng/ml

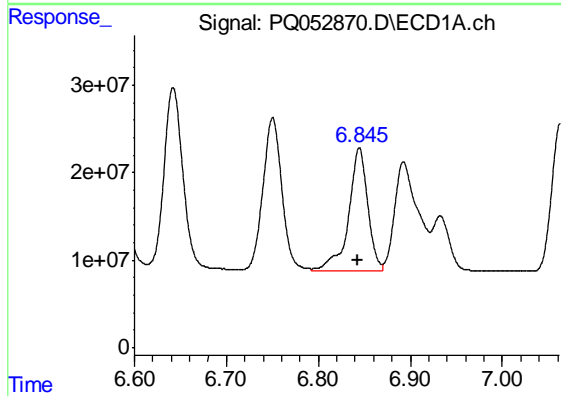


#21 AR-1248-1
 R.T.: 6.551 min
 Delta R.T.: 0.002 min
 Response: 335597731
 Conc: 611.52 ng/ml

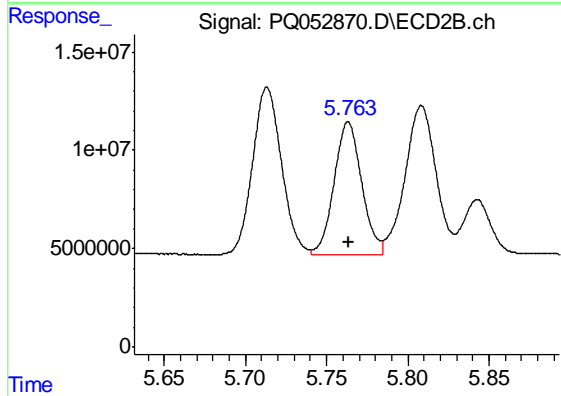
Instrument :
 ECD_Q
 ClientSampleId :
 AR1242379



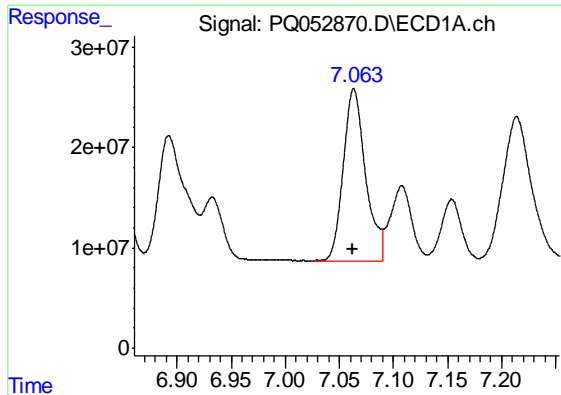
#21 AR-1248-1
 R.T.: 5.500 min
 Delta R.T.: -0.001 min
 Response: 141628707
 Conc: 579.21 ng/ml



#22 AR-1248-2
 R.T.: 6.845 min
 Delta R.T.: 0.002 min
 Response: 205029344
 Conc: 263.23 ng/ml



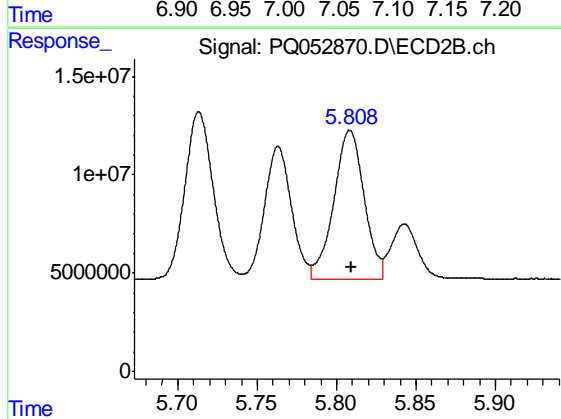
#22 AR-1248-2
 R.T.: 5.763 min
 Delta R.T.: 0.000 min
 Response: 79712465
 Conc: 240.22 ng/ml



#23 AR-1248-3

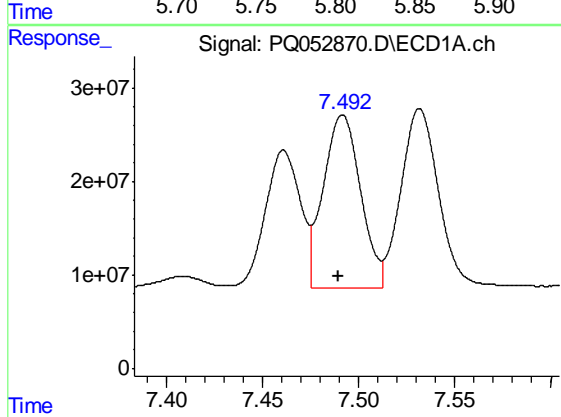
R.T.: 7.063 min
 Delta R.T.: 0.000 min
 Response: 244620200
 Conc: 274.35 ng/ml

Instrument :
 ECD_Q
 ClientSampleId :
 AR1242379



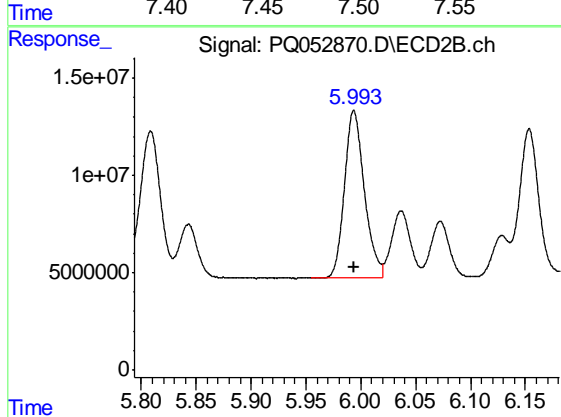
#23 AR-1248-3

R.T.: 5.808 min
 Delta R.T.: 0.000 min
 Response: 100462157
 Conc: 292.43 ng/ml



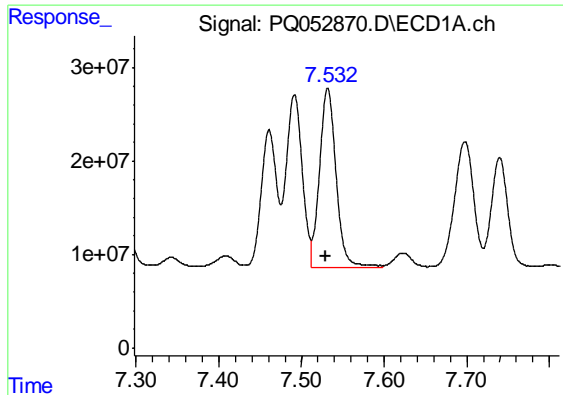
#24 AR-1248-4

R.T.: 7.492 min
 Delta R.T.: 0.002 min
 Response: 250090823
 Conc: 233.79 ng/ml



#24 AR-1248-4

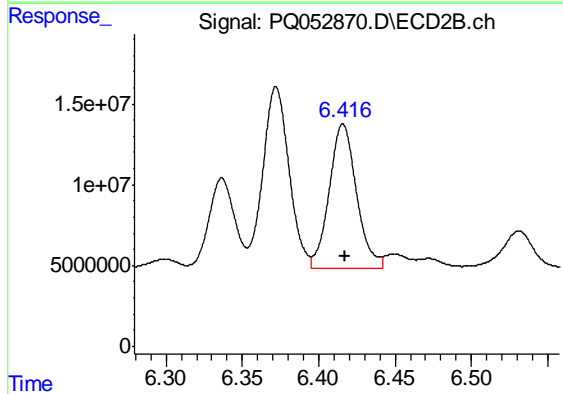
R.T.: 5.994 min
 Delta R.T.: 0.000 min
 Response: 108964286
 Conc: 262.97 ng/ml



#25 AR-1248-5

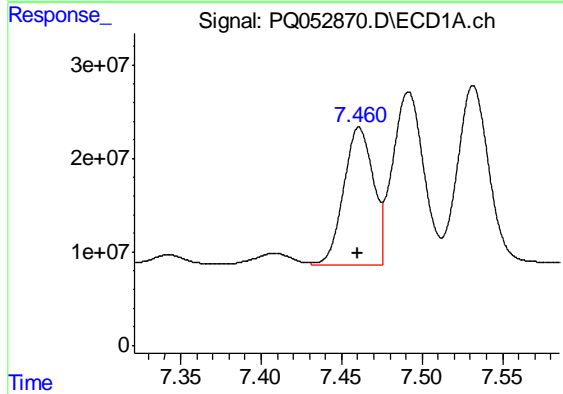
R.T.: 7.532 min
 Delta R.T.: 0.002 min
 Response: 267962549
 Conc: 252.12 ng/ml

Instrument :
 ECD_Q
 ClientSampleId :
 AR1242379



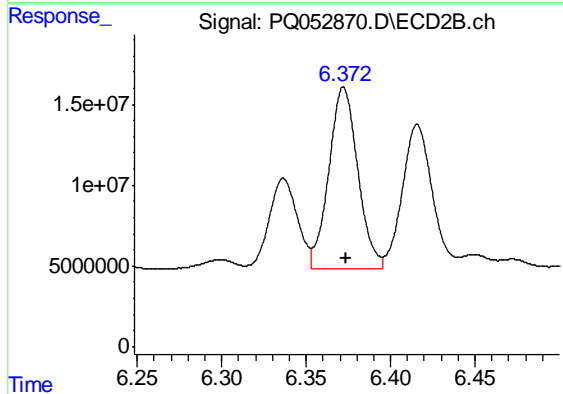
#25 AR-1248-5

R.T.: 6.416 min
 Delta R.T.: 0.000 min
 Response: 111034816
 Conc: 248.85 ng/ml



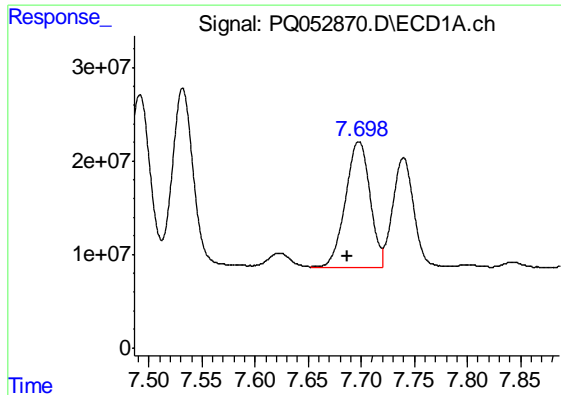
#26 AR-1254-1

R.T.: 7.461 min
 Delta R.T.: 0.001 min
 Response: 187828647
 Conc: 138.23 ng/ml



#26 AR-1254-1

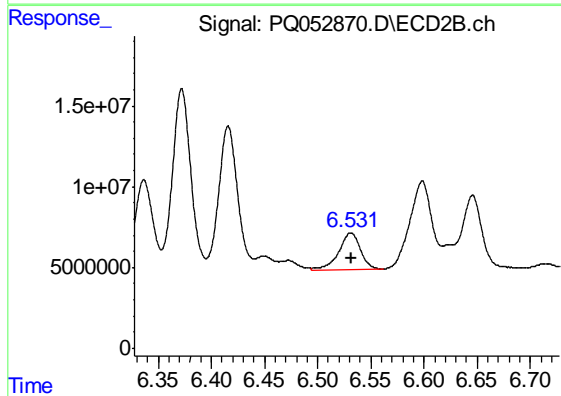
R.T.: 6.372 min
 Delta R.T.: -0.001 min
 Response: 134482772
 Conc: 149.96 ng/ml



#27 AR-1254-2

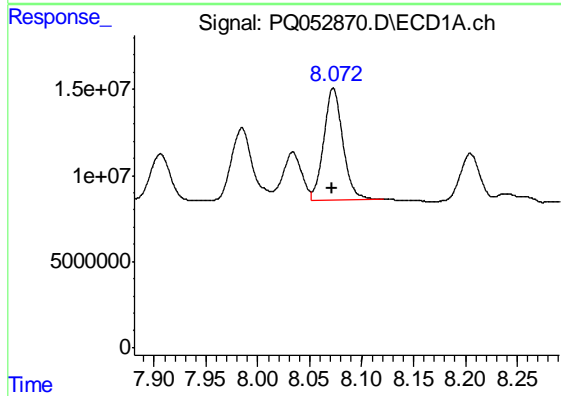
R.T.: 7.698 min
 Delta R.T.: 0.011 min
 Response: 219037619
 Conc: 102.63 ng/ml

Instrument :
 ECD_Q
 ClientSampleId :
 AR1242379



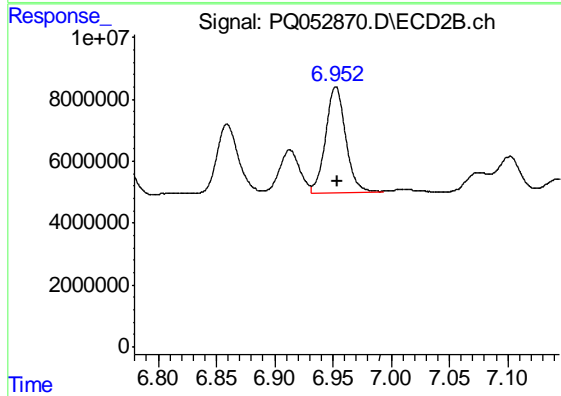
#27 AR-1254-2

R.T.: 6.531 min
 Delta R.T.: -0.001 min
 Response: 32544187
 Conc: 41.08 ng/ml



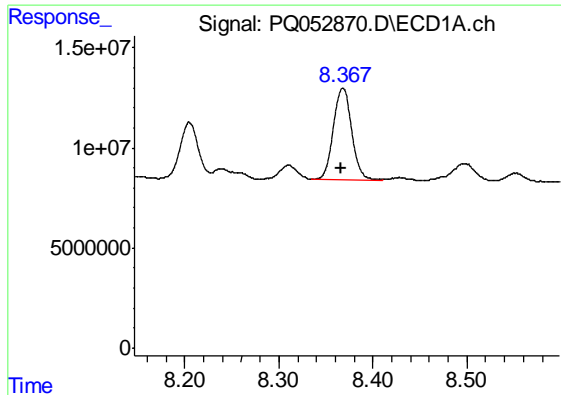
#28 AR-1254-3

R.T.: 8.073 min
 Delta R.T.: 0.001 min
 Response: 83378472
 Conc: 35.57 ng/ml



#28 AR-1254-3

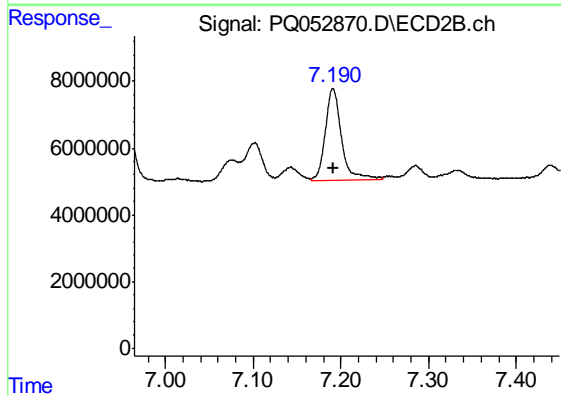
R.T.: 6.952 min
 Delta R.T.: -0.001 min
 Response: 41215093
 Conc: 31.78 ng/ml



#29 AR-1254-4

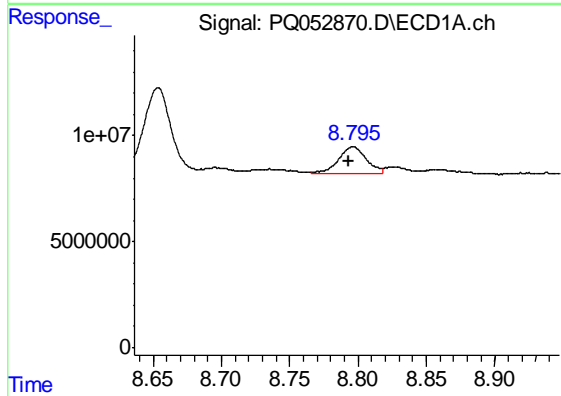
R.T.: 8.368 min
 Delta R.T.: 0.002 min
 Response: 62821867
 Conc: 36.37 ng/ml

Instrument :
 ECD_Q
 ClientSampleId :
 AR1242379



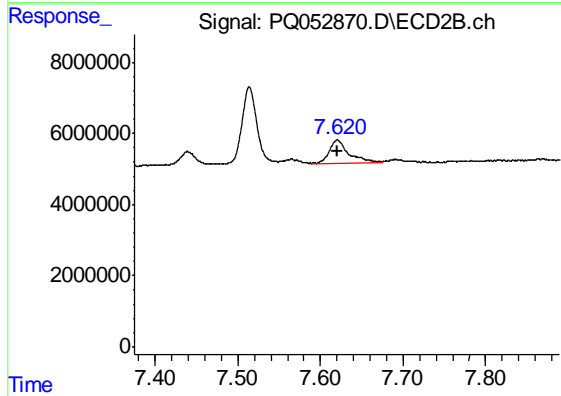
#29 AR-1254-4

R.T.: 7.191 min
 Delta R.T.: 0.000 min
 Response: 35565184
 Conc: 39.97 ng/ml



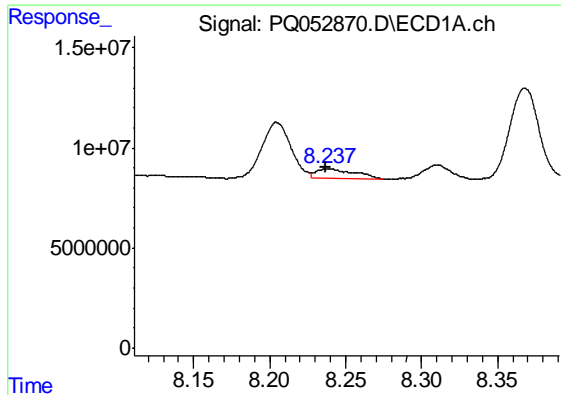
#30 AR-1254-5

R.T.: 8.796 min
 Delta R.T.: 0.003 min
 Response: 17543983
 Conc: 9.56 ng/ml



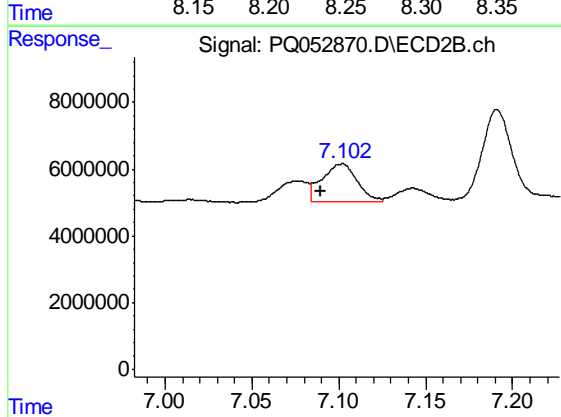
#30 AR-1254-5

R.T.: 7.620 min
 Delta R.T.: 0.000 min
 Response: 9997226
 Conc: 8.36 ng/ml

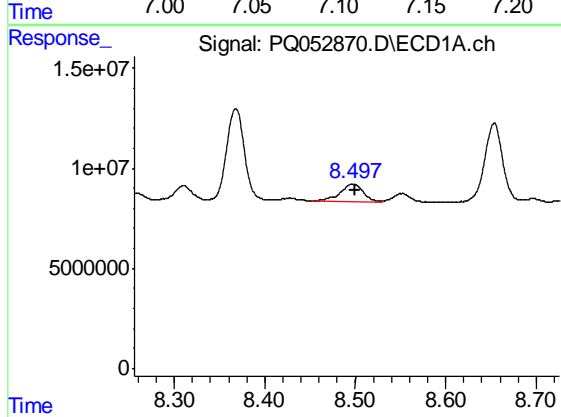


#31 AR-1260-1
 R.T.: 8.238 min
 Delta R.T.: 0.000 min
 Response: 8840534
 Conc: 8.20 ng/ml

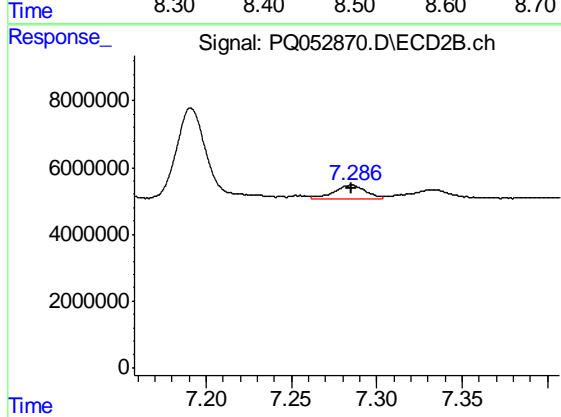
Instrument :
 ECD_Q
ClientSampled :
 AR1242379



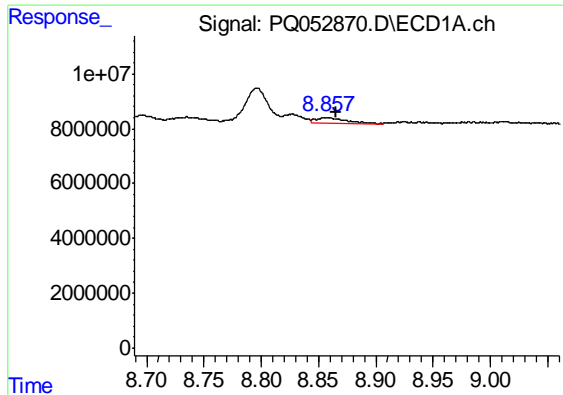
#31 AR-1260-1
 R.T.: 7.102 min
 Delta R.T.: 0.012 min
 Response: 16169320
 Conc: 27.97 ng/ml



#32 AR-1260-2
 R.T.: 8.497 min
 Delta R.T.: -0.003 min
 Response: 15710179
 Conc: 11.96 ng/ml



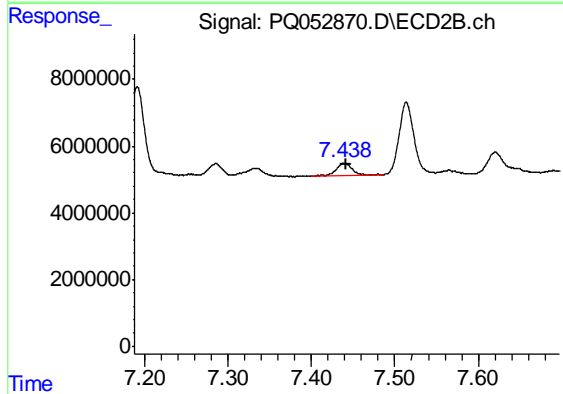
#32 AR-1260-2
 R.T.: 7.285 min
 Delta R.T.: 0.000 min
 Response: 5540784
 Conc: 6.95 ng/ml



#33 AR-1260-3

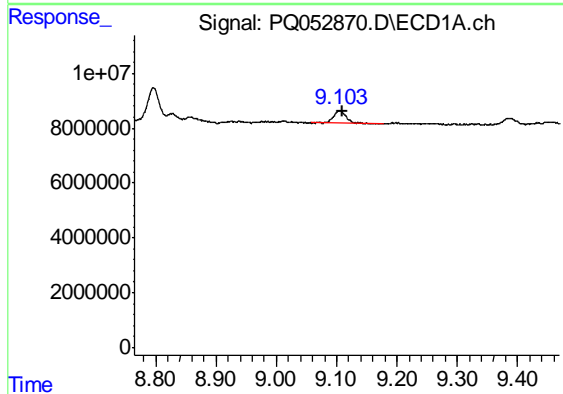
R.T.: 8.857 min
 Delta R.T.: -0.009 min
 Response: 3707572
 Conc: 3.69 ng/ml

Instrument :
 ECD_Q
 ClientSampleId :
 AR1242379



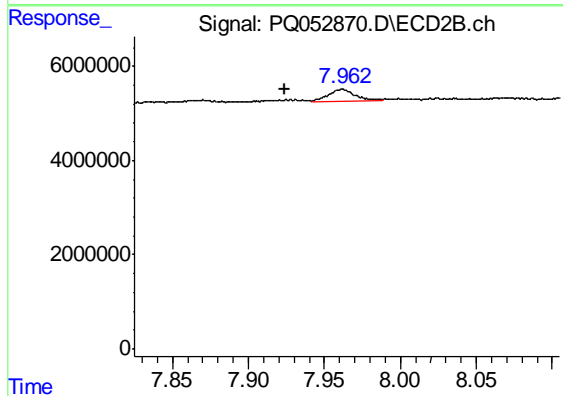
#33 AR-1260-3

R.T.: 7.439 min
 Delta R.T.: -0.003 min
 Response: 4760356
 Conc: 7.22 ng/ml



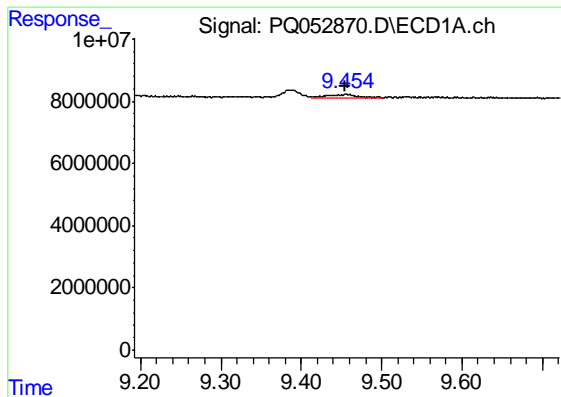
#34 AR-1260-4

R.T.: 9.104 min
 Delta R.T.: -0.006 min
 Response: 7126191
 Conc: 6.24 ng/ml



#34 AR-1260-4

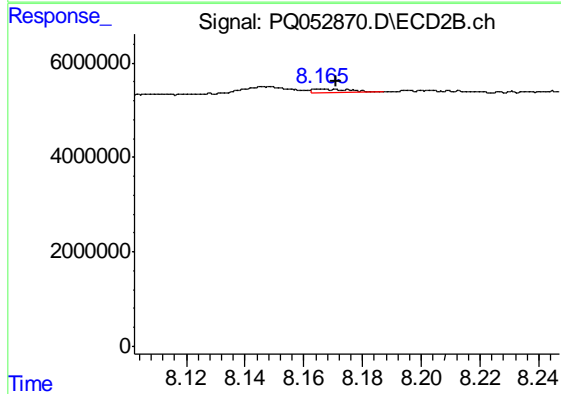
R.T.: 7.962 min
 Delta R.T.: 0.037 min
 Response: 3272127
 Conc: 5.80 ng/ml



#35 AR-1260-5

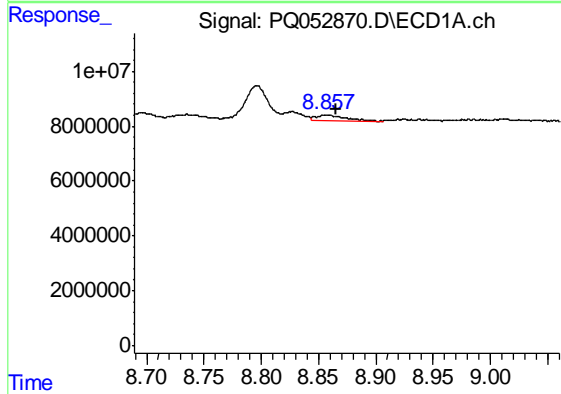
R.T.: 9.455 min
 Delta R.T.: 0.001 min
 Response: 2578930
 Conc: 1.08 ng/ml

Instrument :
 ECD_Q
 ClientSampleId :
 AR1242379



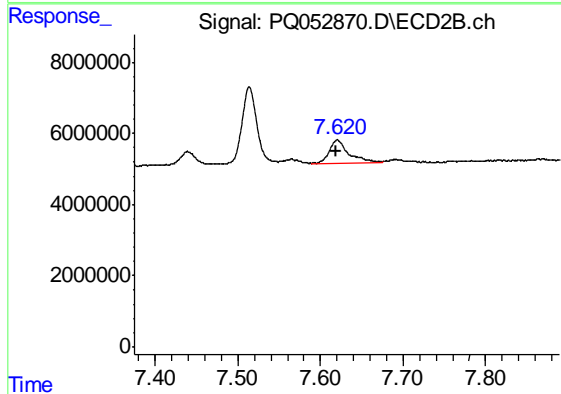
#35 AR-1260-5

R.T.: 8.166 min
 Delta R.T.: -0.005 min
 Response: 720501
 Conc: 0.47 ng/ml



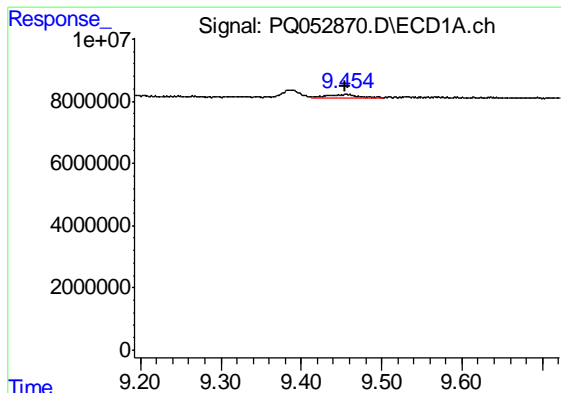
#36 AR-1262-1

R.T.: 8.857 min
 Delta R.T.: -0.008 min
 Response: 3707572
 Conc: 2.04 ng/ml



#36 AR-1262-1

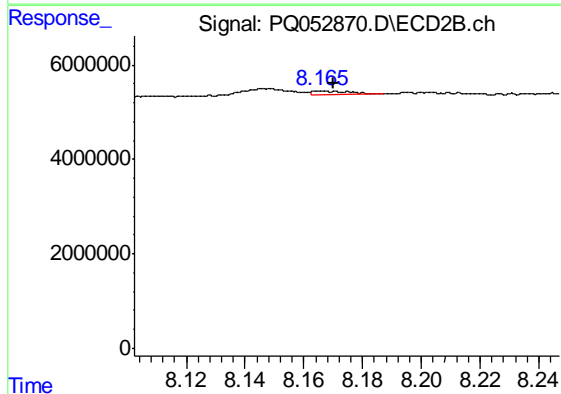
R.T.: 7.620 min
 Delta R.T.: 0.000 min
 Response: 9997226
 Conc: 19.85 ng/ml



#37 AR-1262-2

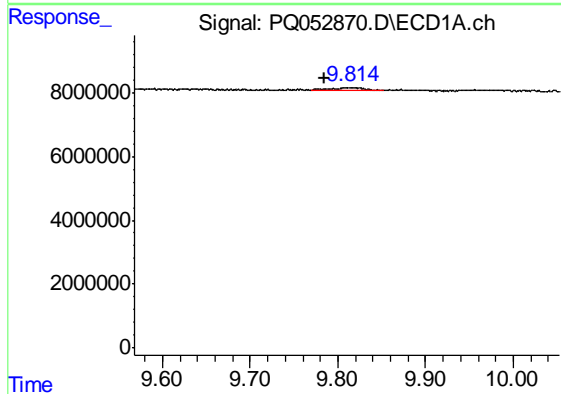
R.T.: 9.455 min
 Delta R.T.: 0.001 min
 Response: 2578930
 Conc: 0.77 ng/ml

Instrument :
 ECD_Q
 ClientSampleId :
 AR1242379



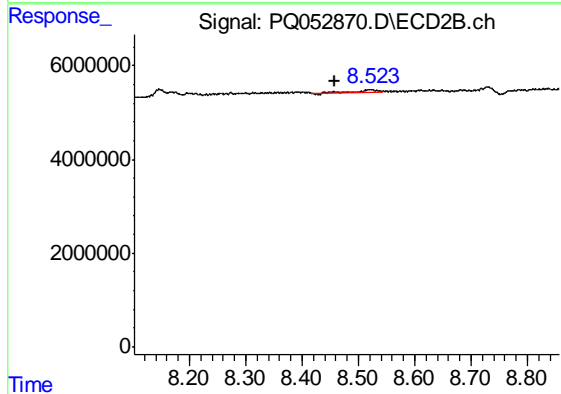
#37 AR-1262-2

R.T.: 8.166 min
 Delta R.T.: -0.004 min
 Response: 720501
 Conc: 0.35 ng/ml



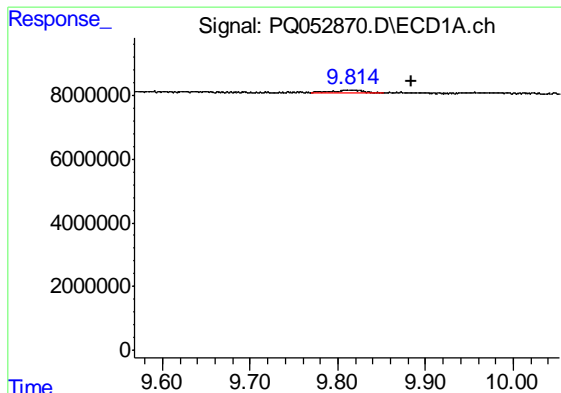
#38 AR-1262-3

R.T.: 9.815 min
 Delta R.T.: 0.030 min
 Response: 2010711
 Conc: 0.91 ng/ml



#38 AR-1262-3

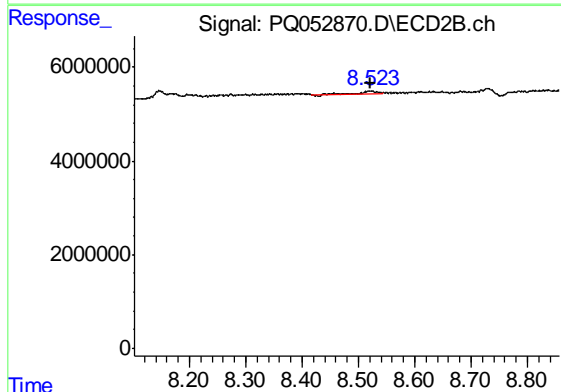
R.T.: 8.523 min
 Delta R.T.: 0.066 min
 Response: 859709
 Conc: 1.06 ng/ml



#39 AR-1262-4

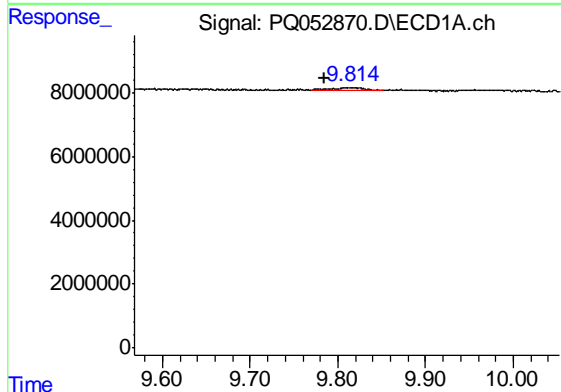
R.T.: 9.815 min
 Delta R.T.: -0.069 min
 Response: 2010711
 Conc: 1.15 ng/ml

Instrument :
 ECD_Q
 ClientSampleId :
 AR1242379



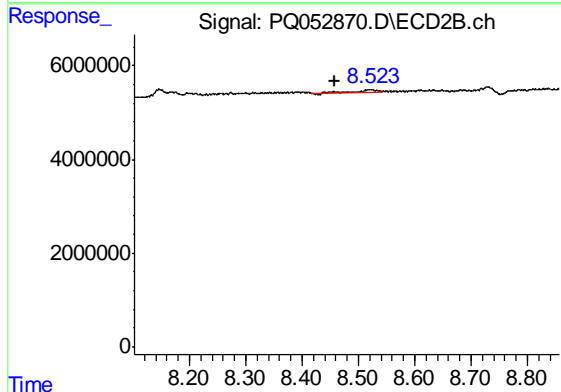
#39 AR-1262-4

R.T.: 8.523 min
 Delta R.T.: 0.002 min
 Response: 859709
 Conc: 0.62 ng/ml



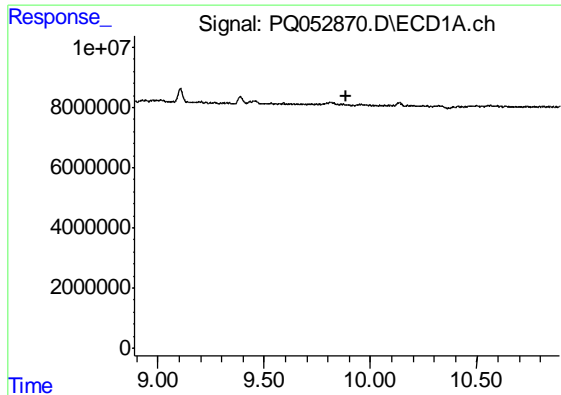
#41 AR-1268-1

R.T.: 9.815 min
 Delta R.T.: 0.031 min
 Response: 2010711
 Conc: 0.51 ng/ml



#41 AR-1268-1

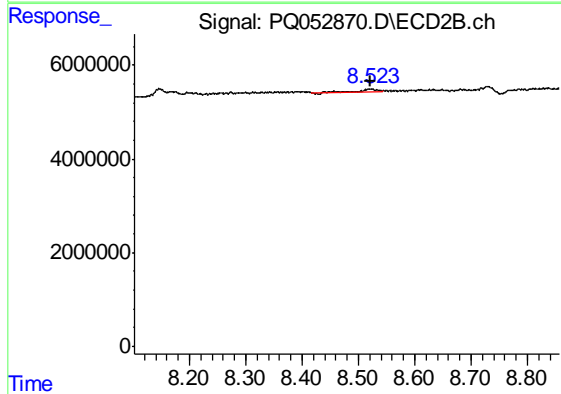
R.T.: 8.523 min
 Delta R.T.: 0.066 min
 Response: 859709
 Conc: 0.36 ng/ml



#42 AR-1268-2

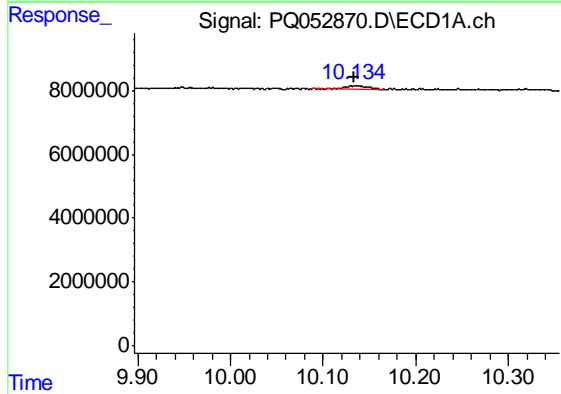
R.T.: 0.000 min
 Exp R.T. : 9.889 min
 Response: 0
 Conc: N.D.

Instrument :
 ECD_Q
 ClientSampled :
 AR1242379



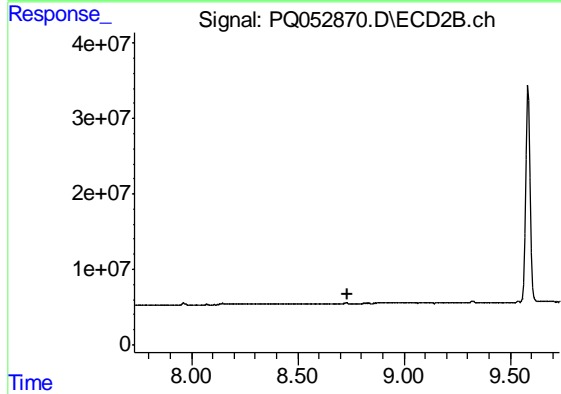
#42 AR-1268-2

R.T.: 8.523 min
 Delta R.T.: 0.000 min
 Response: 859709
 Conc: 0.42 ng/ml



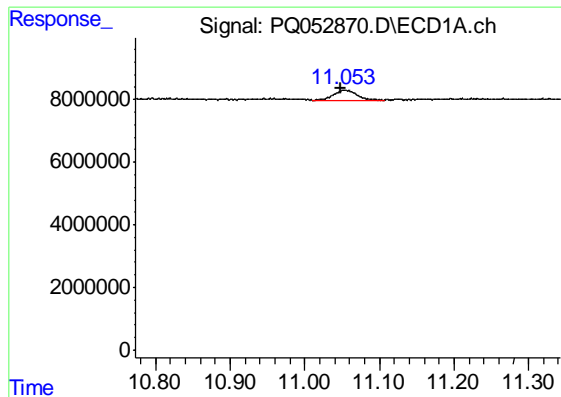
#43 AR-1268-3

R.T.: 10.135 min
 Delta R.T.: 0.002 min
 Response: 1938933
 Conc: 0.61 ng/ml



#43 AR-1268-3

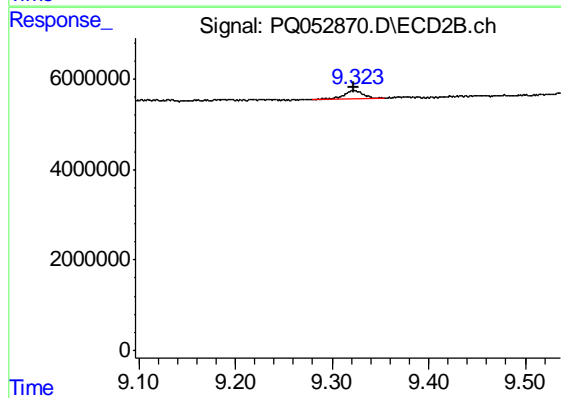
R.T.: 0.000 min
 Exp R.T. : 8.732 min
 Response: 0
 Conc: N.D.



#45 AR-1268-5

R.T.: 11.054 min
Delta R.T.: 0.005 min
Response: 6806427
Conc: 0.63 ng/ml

Instrument :
ECD_Q
ClientSampleId :
AR1242379



#45 AR-1268-5

R.T.: 9.323 min
Delta R.T.: 0.000 min
Response: 2619814
Conc: 0.54 ng/ml