

Data Path : Z:\pestpcbsrv\HPCHEM1\ECD_Q\Data\PQ040621\
 Data File : PQ052927.D
 Signal(s) : Signal #1: ECD1A.ch Signal #2: ECD2B.ch
 Acq On : 07 Apr 2021 07:43
 Operator : DD\AJ
 Sample : AR1242CCC400
 Misc :
 ALS Vial : 4 Sample Multiplier: 1

Instrument :
 ECD_Q
 ClientSampled :

Integration File signal 1: autoint1.e
 Integration File signal 2: autoint2.e
 Quant Time: Apr 07 09:54:24 2021
 Quant Method : Z:\pestpcbsrv\HPCHEM1\ECD_Q\Method\PQ031721CLP.M
 Quant Title : GC EXTRACTABLES
 QLast Update : Thu Mar 18 06:24:02 2021
 Response via : Initial Calibration
 Integrator: ChemStation

Volume Inj. : 1 µl
 Signal #1 Phase : ZB MR1 Signal #2 Phase: ZB MR2
 Signal #1 Info : 30Mx0.32mmx 0.5µm Signal #2 Info : 30M x 0.32mm x 0.25µm

| Compound | RT#1 | RT#2 | Resp#1 | Resp#2 | ng/ml | ng/ml |
|-----------------------------|--------|--------|----------|----------|---------|-----------|
| System Monitoring Compounds | | | | | | |
| 1) SA Tetrachlo... | 5.224 | 4.240 | 570.3E6 | 226.7E6 | 24.746 | 23.701 |
| 2) SA Decachlor... | 11.414 | 9.581 | 744.9E6 | 330.3E6 | 30.125 | 33.373 |
| Target Compounds | | | | | | |
| 3) L1 AR-1016-1 | 6.548 | 5.498 | 309.9E6 | 148.2E6 | 361.202 | 382.477 |
| 4) L1 AR-1016-2 | 6.572 | 5.519 | 467.1E6 | 212.9E6 | 365.964 | 383.675 |
| 5) L1 AR-1016-3 | 6.639 | 5.711 | 276.5E6 | 108.5E6 | 364.823 | 381.439 |
| 6) L1 AR-1016-4 | 6.747 | 5.761 | 226.7E6 | 80140326 | 356.253 | 357.075 |
| 7) L1 AR-1016-5 | 7.061 | 5.992 | 210.9E6 | 101.7E6 | 346.039 | 354.518 |
| 8) L2 AR-1221-1 | 5.469 | 4.494 | 34712005 | 13234274 | 142.588 | 123.804 |
| 9) L2 AR-1221-2 | 5.574 | 4.596 | 41871695 | 17331116 | 246.665 | 231.890 |
| 10) L2 AR-1221-3 | 5.661 | 4.685 | 182.8E6 | 77188348 | 316.897 | 304.105 |
| 11) L3 AR-1232-1 | 5.661 | 4.685 | 182.8E6 | 77188348 | 389.902 | 368.607 |
| 12) L3 AR-1232-2 | 6.254 | 5.519 | 229.5E6 | 212.9E6 | 907.552 | 912.465 |
| 13) L3 AR-1232-3 | 6.572 | 5.711 | 467.1E6 | 108.5E6 | 868.007 | 926.811 |
| 14) L3 AR-1232-4 | 6.747 | 5.807 | 226.7E6 | 100.5E6 | 846.050 | 1011.782 |
| 15) L3 AR-1232-5 | 6.842 | 5.992 | 178.8E6 | 101.7E6 | 910.345 | 920.909 |
| 16) L4 AR-1242-1 | 6.548 | 5.498 | 309.9E6 | 148.2E6 | 388.817 | 419.700 |
| 17) L4 AR-1242-2 | 6.572 | 5.519 | 467.1E6 | 212.9E6 | 396.902 | 424.847 |
| 18) L4 AR-1242-3 | 6.639 | 5.711 | 276.5E6 | 108.5E6 | 391.381 | 417.299 |
| 19) L4 AR-1242-4 | 6.747 | 5.807 | 226.7E6 | 100.5E6 | 385.850 | 409.460 |
| 20) L4 AR-1242-5 | 7.529 | 6.371 | 229.5E6 | 135.7E6 | 342.610 | 390.490 |
| 21) L5 AR-1248-1 | 6.548 | 5.498 | 309.9E6 | 148.2E6 | 564.732 | 606.229 |
| 22) L5 AR-1248-2 | 6.842 | 5.761 | 178.8E6 | 80140326 | 229.498 | 241.513 |
| 23) L5 AR-1248-3 | 7.061 | 5.807 | 210.9E6 | 100.5E6 | 236.520 | 292.629 |
| 24) L5 AR-1248-4 | 7.489 | 5.992 | 214.8E6 | 101.7E6 | 200.822 | 245.428 |
| 25) L5 AR-1248-5 | 7.529 | 6.414 | 229.5E6 | 113.4E6 | 215.974 | 254.151 |
| 26) L6 AR-1254-1 | 7.459 | 6.371 | 161.5E6 | 135.7E6 | 118.867 | 151.278 # |
| 27) L6 AR-1254-2 | 7.695 | 6.530 | 182.2E6 | 34998638 | 85.390 | 44.182 # |
| 28) L6 AR-1254-3 | 8.071 | 6.951 | 82991722 | 43107437 | 35.407 | 33.238 |
| 29) L6 AR-1254-4 | 8.365 | 7.190 | 58274517 | 36766134 | 33.736 | 41.316 |
| 30) L6 AR-1254-5 | 8.793 | 7.619 | 24927751 | 11819347 | 13.587 | 9.880 # |
| 31) L7 AR-1260-1 | 8.237 | 7.100 | 11100375 | 17372715 | 10.302 | 30.051 # |
| 32) L7 AR-1260-2 | 8.495 | 7.283 | 24509533 | 9041989 | 18.652 | 11.336 # |
| 33) L7 AR-1260-3 | 8.857 | 7.438 | 8537136 | 4706175 | 8.504 | 7.140 |
| 34) L7 AR-1260-4 | 9.103 | 7.959 | 9834636 | 3385606 | 8.606 | 6.004 # |
| 35) L7 AR-1260-5 | 9.453 | 8.166 | 10098393 | 2561898 | 4.245 | 1.674 # |
| 36) L8 AR-1262-1 | 8.857 | 7.619 | 8537136 | 11819347 | 4.703 | 23.467 # |
| 37) L8 AR-1262-2 | 9.453 | 8.166 | 10098393 | 2561898 | 3.016 | 1.232 # |
| 38) L8 AR-1262-3 | 9.815 | 8.518f | 8532199 | 2601080 | 3.845 | 3.218 |
| 39) L8 AR-1262-4 | 9.862 | 8.518 | 4458894 | 2601080 | 2.553 | 1.866 # |
| 41) L9 AR-1268-1 | 9.815 | 8.518f | 8532199 | 2601080 | 2.174 | 1.097 # |
| 42) L9 AR-1268-2 | 9.862 | 8.518 | 4458894 | 2601080 | 1.203 | 1.279 |

Data Path : Z:\pestpcbsrv\HPCHEM1\ECD_Q\Data\PQ040621\
 Data File : PQ052927.D
 Signal(s) : Signal #1: ECD1A.ch Signal #2: ECD2B.ch
 Acq On : 07 Apr 2021 07:43
 Operator : DD\AJ
 Sample : AR1242CCC400
 Misc :
 ALS Vial : 4 Sample Multiplier: 1

Instrument :
 ECD_Q
 ClientSampleId :

Integration File signal 1: autoint1.e
 Integration File signal 2: autoint2.e
 Quant Time: Apr 07 09:54:24 2021
 Quant Method : Z:\pestpcbsrv\HPCHEM1\ECD_Q\Method\PQ031721CLP.M
 Quant Title : GC EXTRACTABLES
 QLast Update : Thu Mar 18 06:24:02 2021
 Response via : Initial Calibration
 Integrator: ChemStation

Volume Inj. : 1 µl
 Signal #1 Phase : ZB MR1 Signal #2 Phase: ZB MR2
 Signal #1 Info : 30Mx0.32mmx 0.5µm Signal #2 Info : 30M x 0.32mm x 0.25µm

| | Compound | RT#1 | RT#2 | Resp#1 | Resp#2 | ng/ml | ng/ml |
|-----|--------------|--------|-------|---------|---------|-------|--------|
| 43) | L9 AR-1268-3 | 10.133 | 0.000 | 1758821 | 0 | 0.551 | N.D. # |
| 45) | L9 AR-1268-5 | 11.050 | 9.322 | 5982332 | 2169076 | 0.558 | 0.450 |

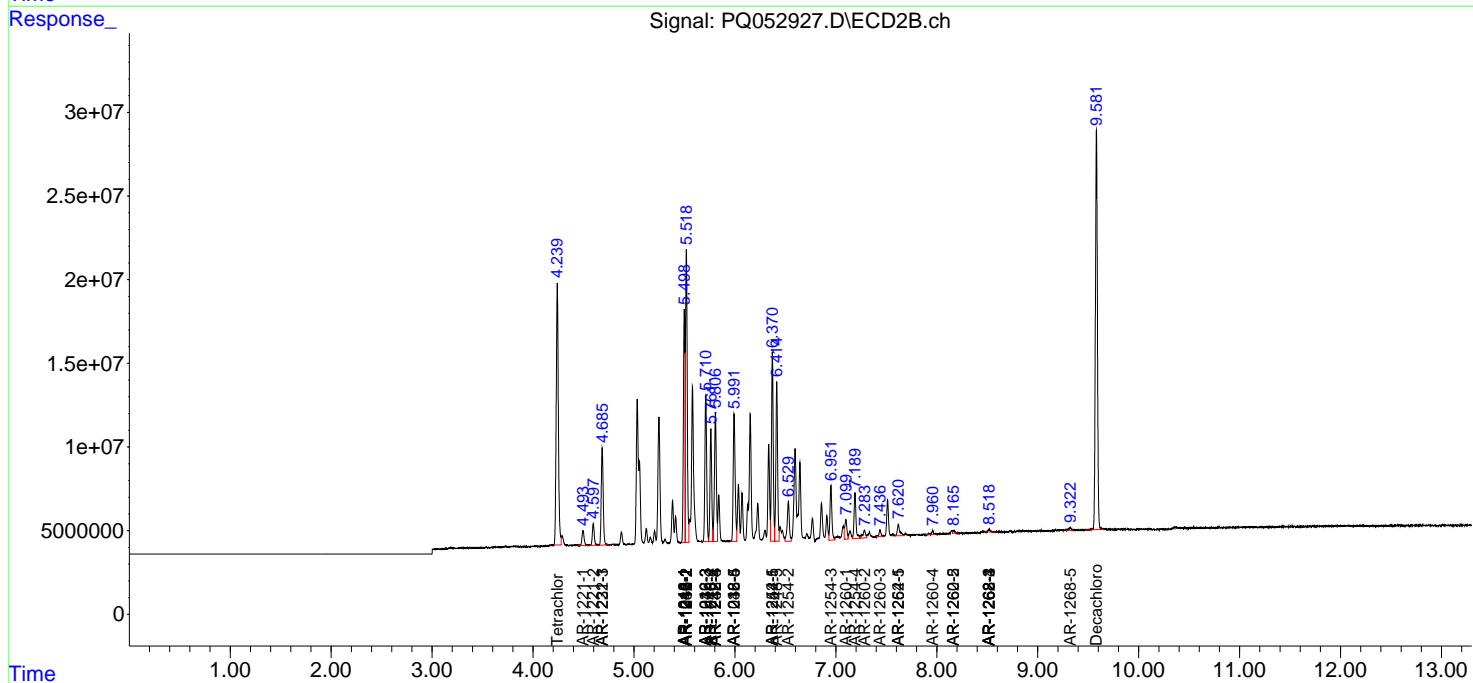
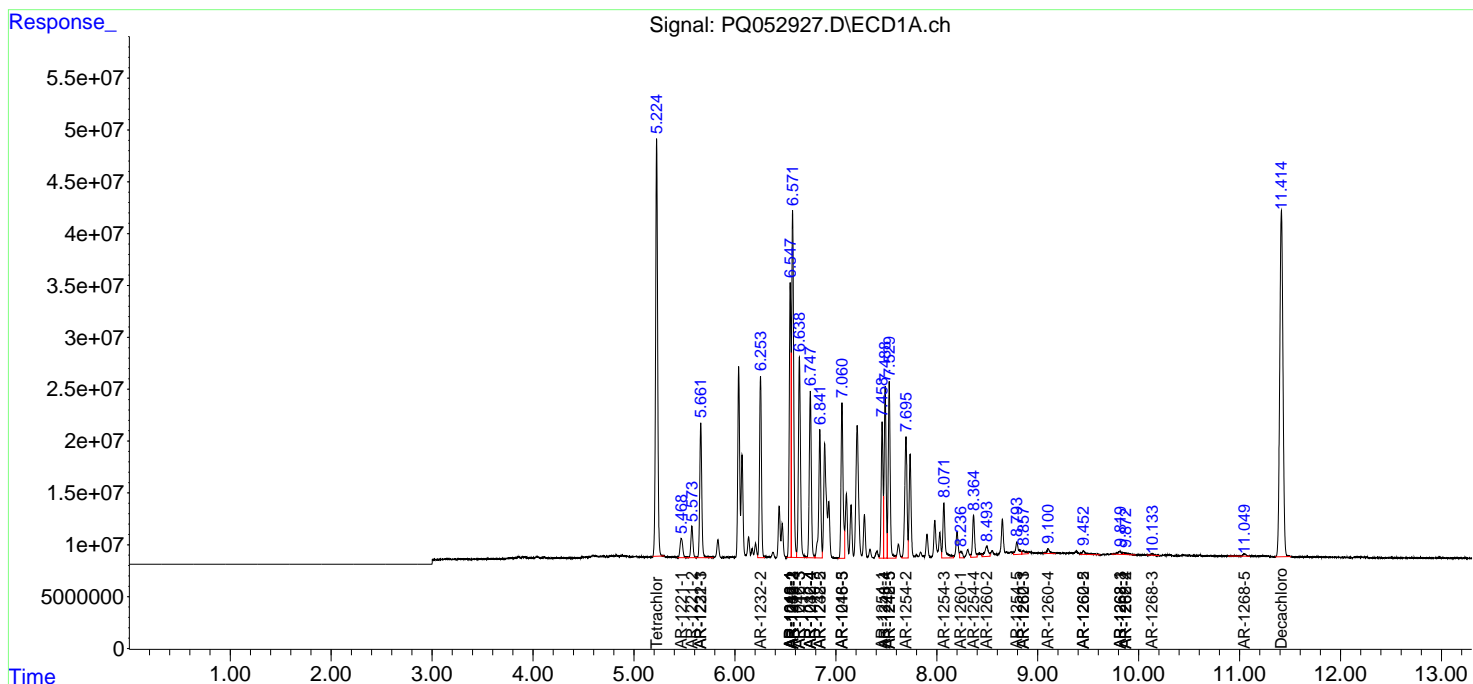
(f)=RT Delta > 1/2 Window (#)=Amounts differ by > 25% (m)=manual int.

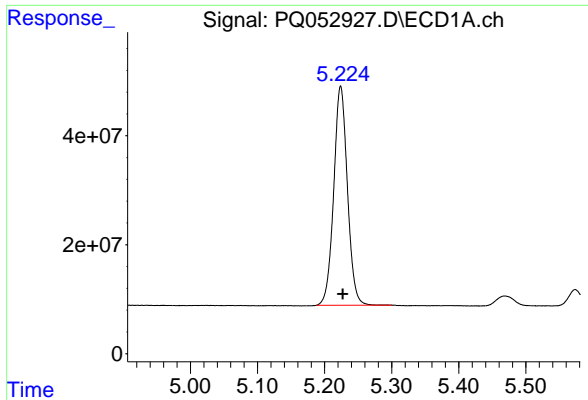
Data Path : Z:\pestpcbsrv\HPCHEM1\ECD_Q\Data\PQ040621\
 Data File : PQ052927.D
 Signal(s) : Signal #1: ECD1A.ch Signal #2: ECD2B.ch
 Acq On : 07 Apr 2021 07:43
 Operator : DD\AJ
 Sample : AR1242CCC400
 Misc :
 ALS Vial : 4 Sample Multiplier: 1

Instrument :
 ECD_Q
 ClientSampled :

Integration File signal 1: autoint1.e
 Integration File signal 2: autoint2.e
 Quant Time: Apr 07 09:54:24 2021
 Quant Method : Z:\pestpcbsrv\HPCHEM1\ECD_Q\Method\PQ031721CLP.M
 Quant Title : GC EXTRACTABLES
 QLast Update : Thu Mar 18 06:24:02 2021
 Response via : Initial Calibration
 Integrator: ChemStation

Volume Inj. : 1 µl
 Signal #1 Phase : ZB MR1 Signal #2 Phase: ZB MR2
 Signal #1 Info : 30Mx0.32mmx 0.5µm Signal #2 Info : 30M x 0.32mm x 0.25µm

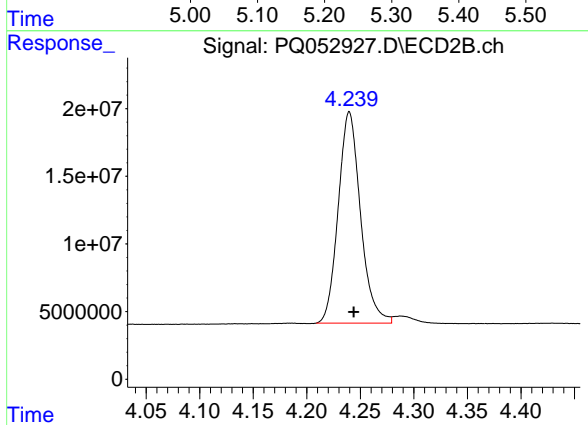




#1 Tetrachloro-m-xylene

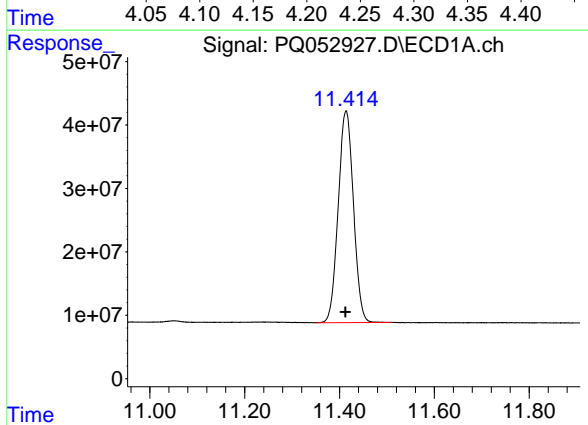
R.T.: 5.224 min
Delta R.T.: -0.003 min
Response: 570292980
Conc: 24.75 ng/ml

Instrument :
ECD_Q
ClientSampleId :



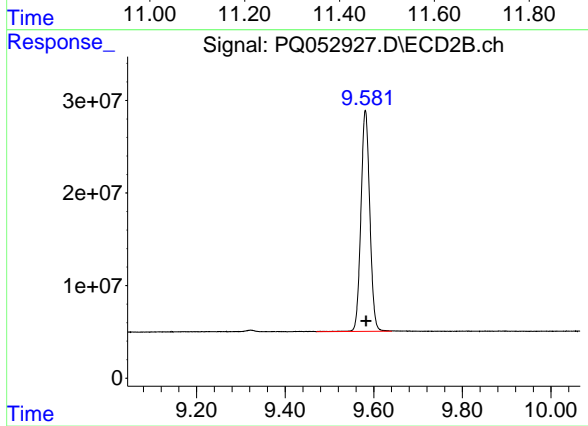
#1 Tetrachloro-m-xylene

R.T.: 4.240 min
Delta R.T.: -0.004 min
Response: 226690334
Conc: 23.70 ng/ml



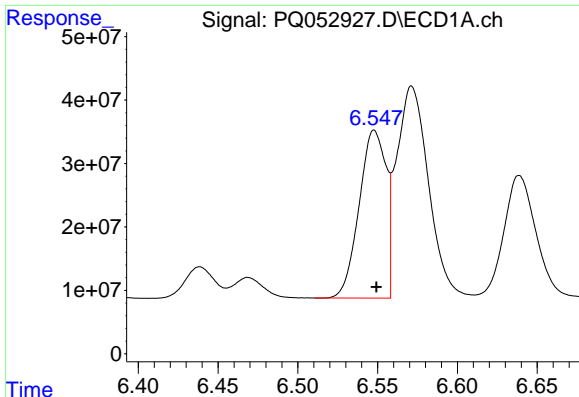
#2 Decachlorobiphenyl

R.T.: 11.414 min
Delta R.T.: 0.000 min
Response: 744941028
Conc: 30.12 ng/ml



#2 Decachlorobiphenyl

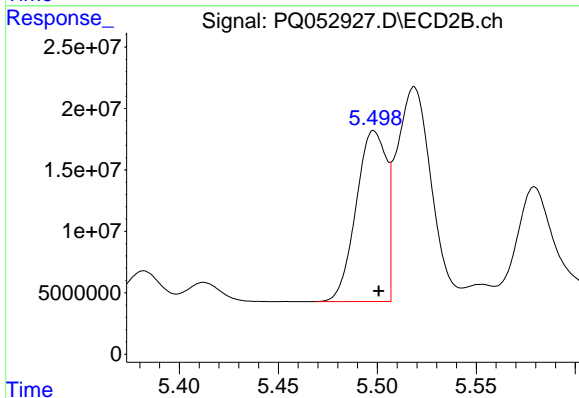
R.T.: 9.581 min
Delta R.T.: -0.002 min
Response: 330266961
Conc: 33.37 ng/ml



#3 AR-1016-1

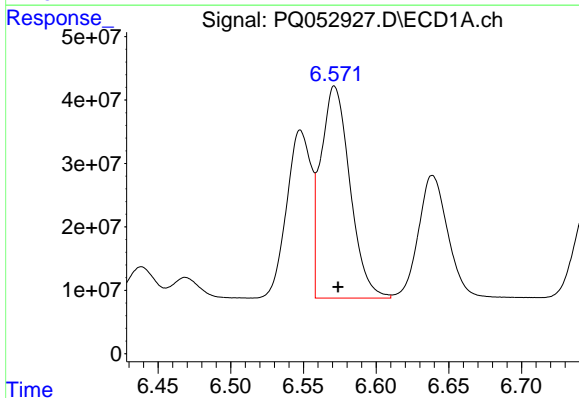
R.T.: 6.548 min
 Delta R.T.: -0.001 min
 Response: 309921115
 Conc: 361.20 ng/ml

Instrument :
 ECD_Q
 ClientSampled :



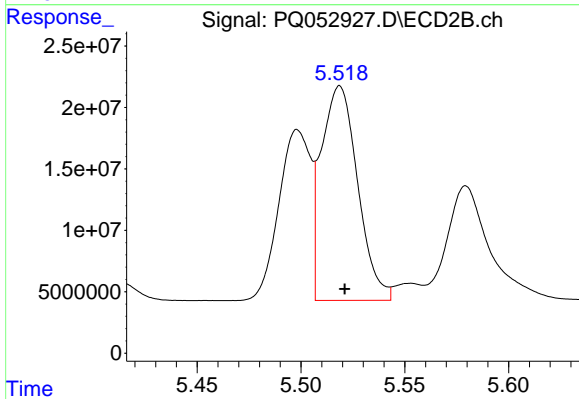
#3 AR-1016-1

R.T.: 5.498 min
 Delta R.T.: -0.002 min
 Response: 148235499
 Conc: 382.48 ng/ml



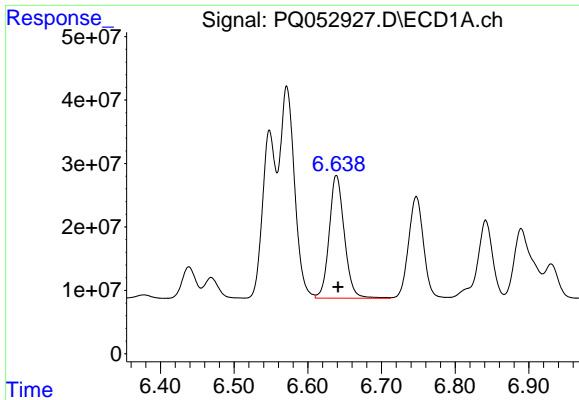
#4 AR-1016-2

R.T.: 6.572 min
 Delta R.T.: -0.002 min
 Response: 467066867
 Conc: 365.96 ng/ml



#4 AR-1016-2

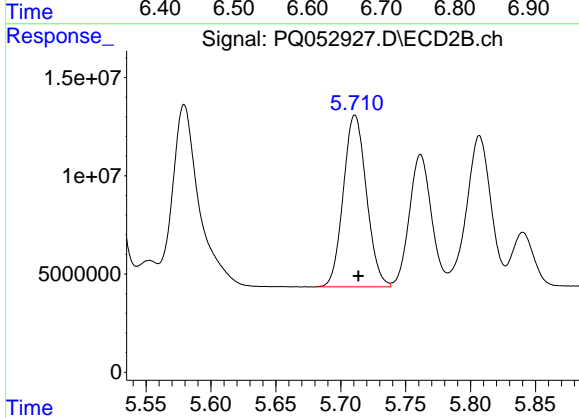
R.T.: 5.519 min
 Delta R.T.: -0.002 min
 Response: 212870389
 Conc: 383.68 ng/ml



#5 AR-1016-3

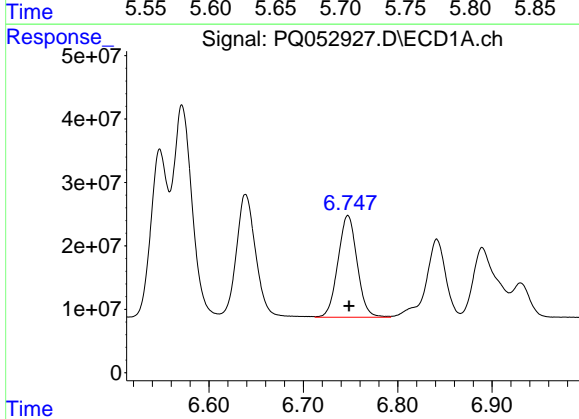
R.T.: 6.639 min
 Delta R.T.: -0.002 min
 Response: 276512183
 Conc: 364.82 ng/ml

Instrument :
 ECD_Q
 ClientSampled :



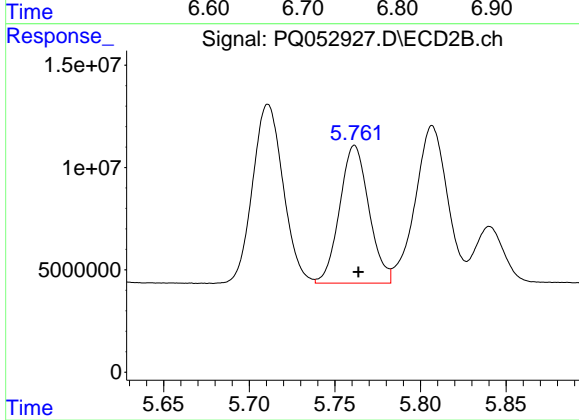
#5 AR-1016-3

R.T.: 5.711 min
 Delta R.T.: -0.003 min
 Response: 108460693
 Conc: 381.44 ng/ml



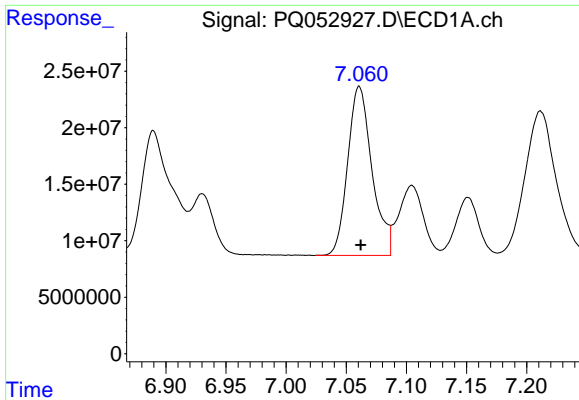
#6 AR-1016-4

R.T.: 6.747 min
 Delta R.T.: -0.001 min
 Response: 226706934
 Conc: 356.25 ng/ml



#6 AR-1016-4

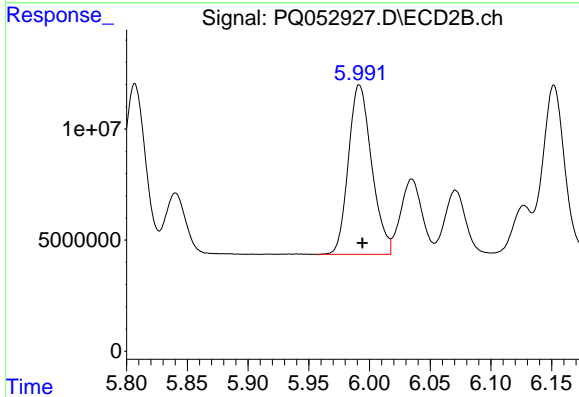
R.T.: 5.761 min
 Delta R.T.: -0.002 min
 Response: 80140326
 Conc: 357.07 ng/ml



#7 AR-1016-5

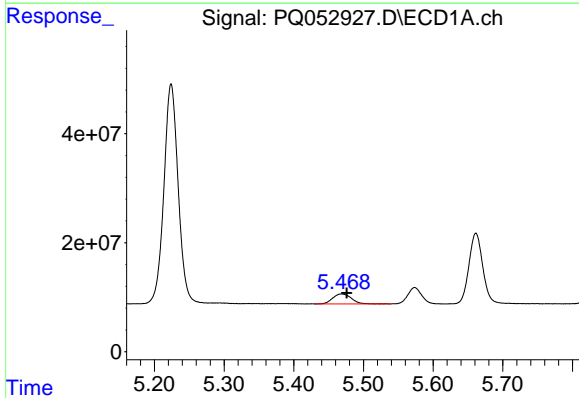
R.T.: 7.061 min
Delta R.T.: -0.001 min
Response: 210892260
Conc: 346.04 ng/ml

Instrument :
ECD_Q
ClientSampled :



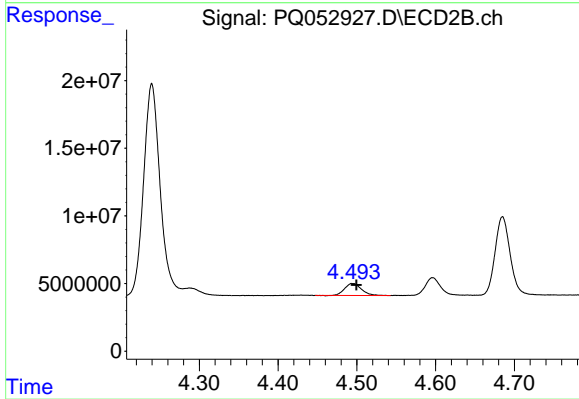
#7 AR-1016-5

R.T.: 5.992 min
Delta R.T.: -0.002 min
Response: 101694079
Conc: 354.52 ng/ml



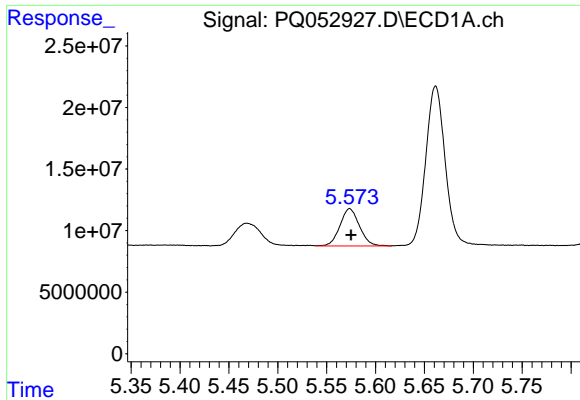
#8 AR-1221-1

R.T.: 5.469 min
Delta R.T.: -0.007 min
Response: 34712005
Conc: 142.59 ng/ml



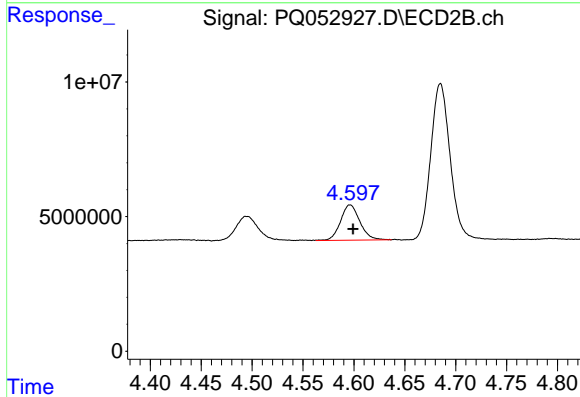
#8 AR-1221-1

R.T.: 4.494 min
Delta R.T.: -0.006 min
Response: 13234274
Conc: 123.80 ng/ml

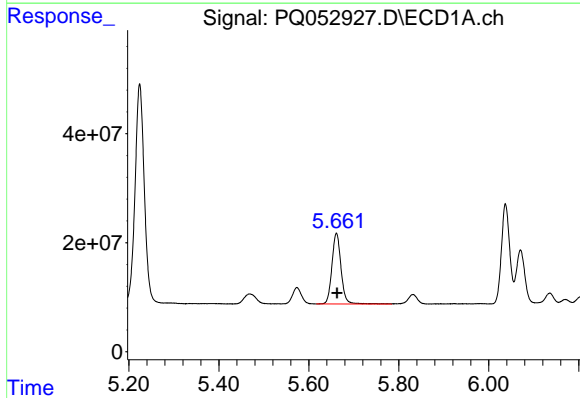


#9 AR-1221-2
 R.T.: 5.574 min
 Delta R.T.: -0.001 min
 Response: 41871695
 Conc: 246.66 ng/ml

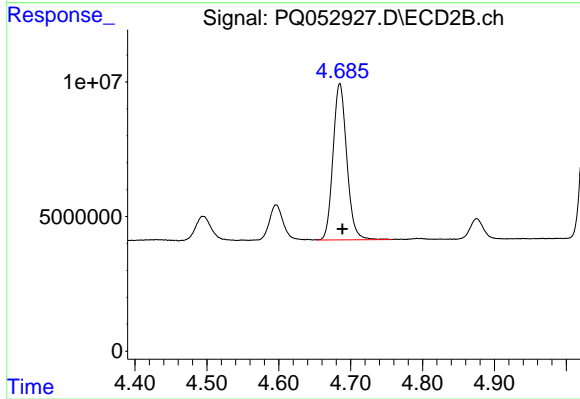
Instrument :
 ECD_Q
 ClientSampleId :



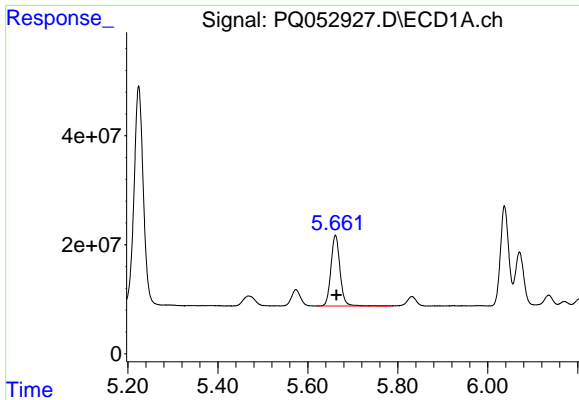
#9 AR-1221-2
 R.T.: 4.596 min
 Delta R.T.: -0.003 min
 Response: 17331116
 Conc: 231.89 ng/ml



#10 AR-1221-3
 R.T.: 5.661 min
 Delta R.T.: -0.001 min
 Response: 182843629
 Conc: 316.90 ng/ml

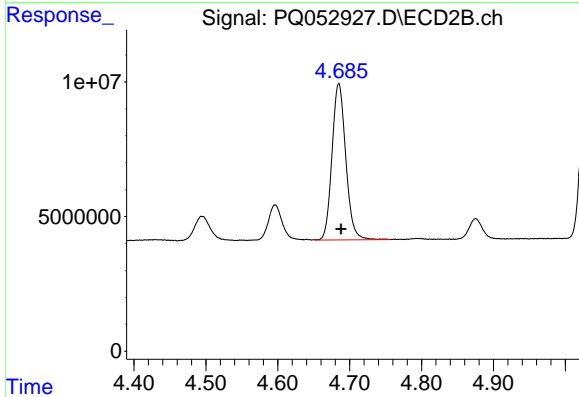


#10 AR-1221-3
 R.T.: 4.685 min
 Delta R.T.: -0.004 min
 Response: 77188348
 Conc: 304.11 ng/ml

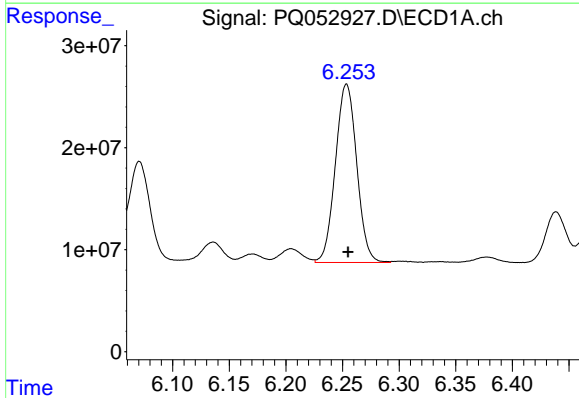


#11 AR-1232-1
 R.T.: 5.661 min
 Delta R.T.: -0.002 min
 Response: 182843629
 Conc: 389.90 ng/ml

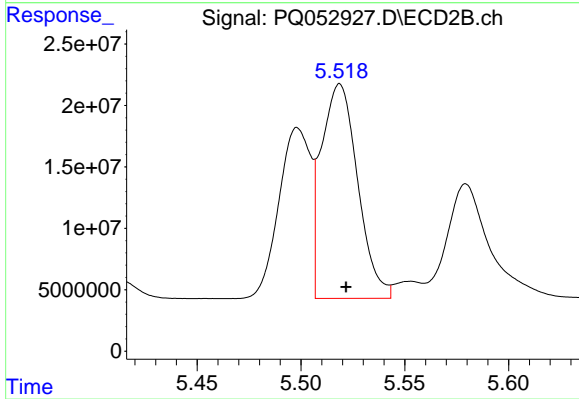
Instrument :
 ECD_Q
 ClientSampleId :



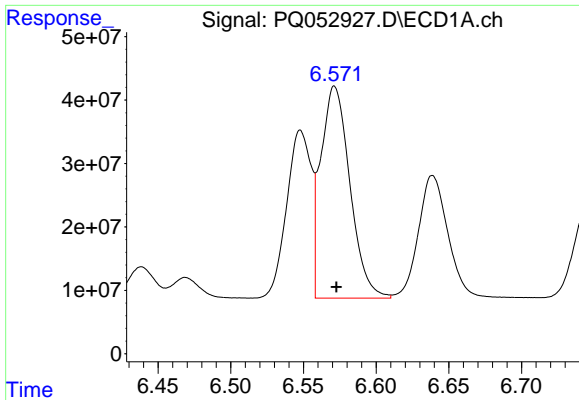
#11 AR-1232-1
 R.T.: 4.685 min
 Delta R.T.: -0.003 min
 Response: 77188348
 Conc: 368.61 ng/ml



#12 AR-1232-2
 R.T.: 6.254 min
 Delta R.T.: -0.001 min
 Response: 229516031
 Conc: 907.55 ng/ml

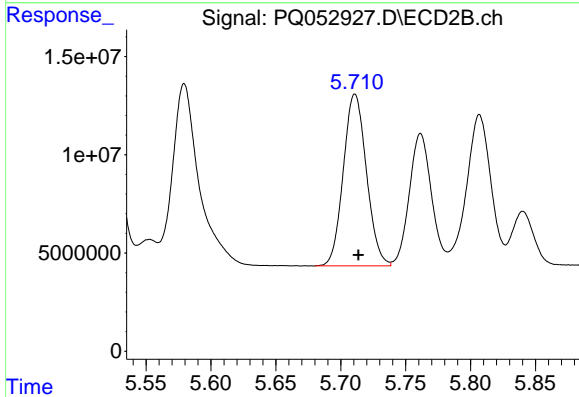


#12 AR-1232-2
 R.T.: 5.519 min
 Delta R.T.: -0.003 min
 Response: 212870389
 Conc: 912.46 ng/ml

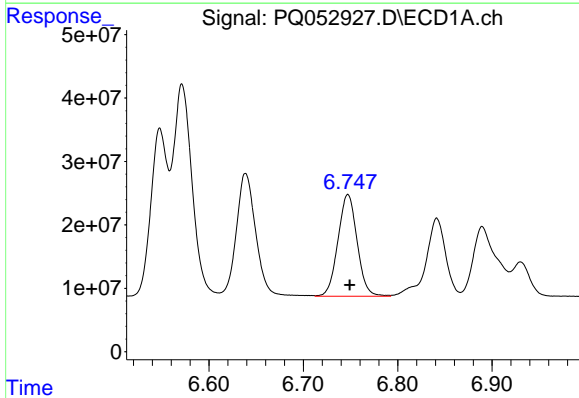


#13 AR-1232-3
 R.T.: 6.572 min
 Delta R.T.: -0.001 min
 Response: 467066867
 Conc: 868.01 ng/ml

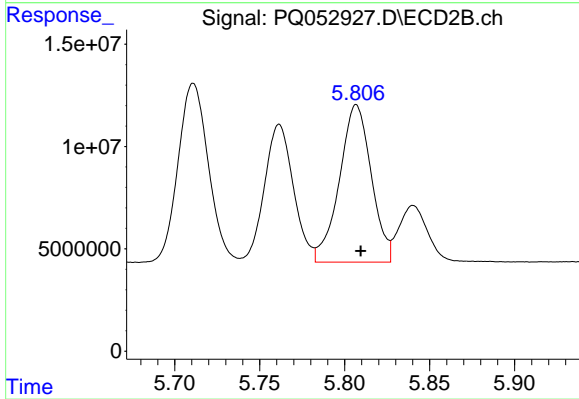
Instrument :
 ECD_Q
 ClientSampleId :



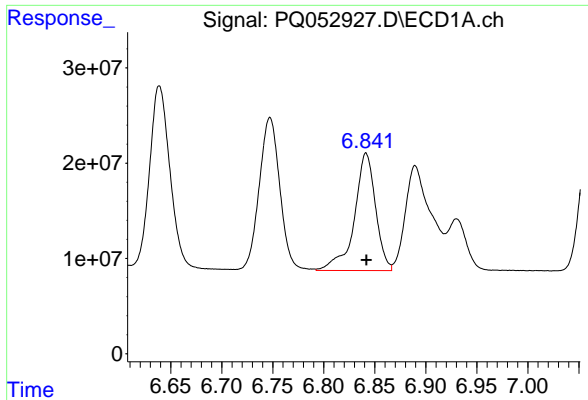
#13 AR-1232-3
 R.T.: 5.711 min
 Delta R.T.: -0.003 min
 Response: 108460693
 Conc: 926.81 ng/ml



#14 AR-1232-4
 R.T.: 6.747 min
 Delta R.T.: -0.002 min
 Response: 226706934
 Conc: 846.05 ng/ml



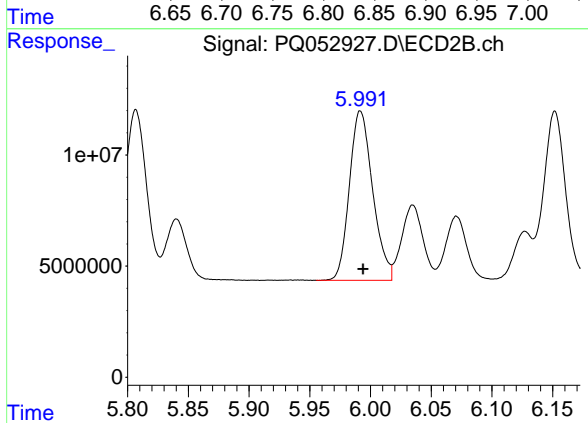
#14 AR-1232-4
 R.T.: 5.807 min
 Delta R.T.: -0.003 min
 Response: 100531700
 Conc: 1011.78 ng/ml



#15 AR-1232-5

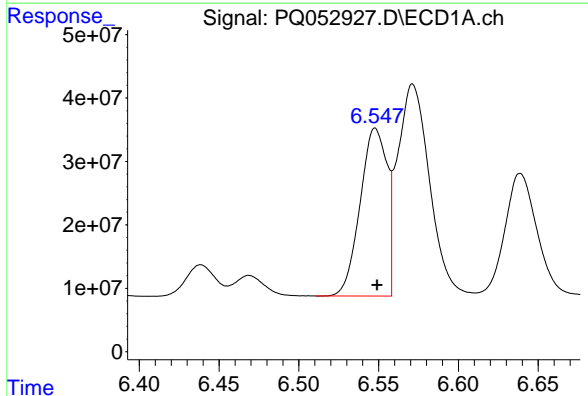
R.T.: 6.842 min
 Delta R.T.: 0.000 min
 Response: 178753092
 Conc: 910.35 ng/ml

Instrument :
 ECD_Q
 ClientSampleId :



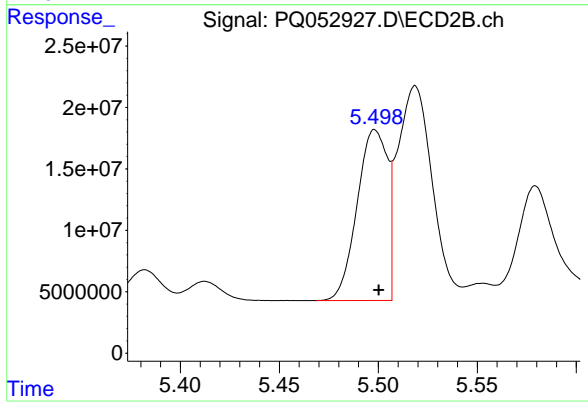
#15 AR-1232-5

R.T.: 5.992 min
 Delta R.T.: -0.002 min
 Response: 101694079
 Conc: 920.91 ng/ml



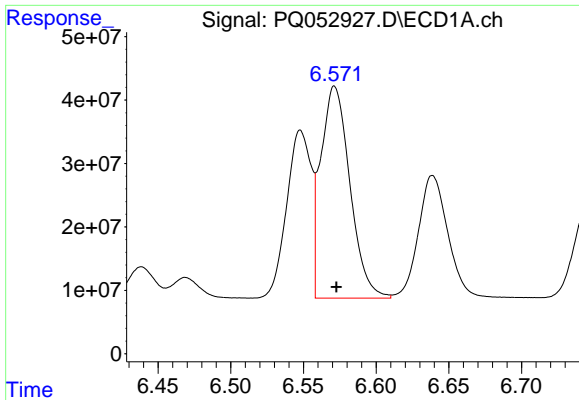
#16 AR-1242-1

R.T.: 6.548 min
 Delta R.T.: 0.000 min
 Response: 309921115
 Conc: 388.82 ng/ml



#16 AR-1242-1

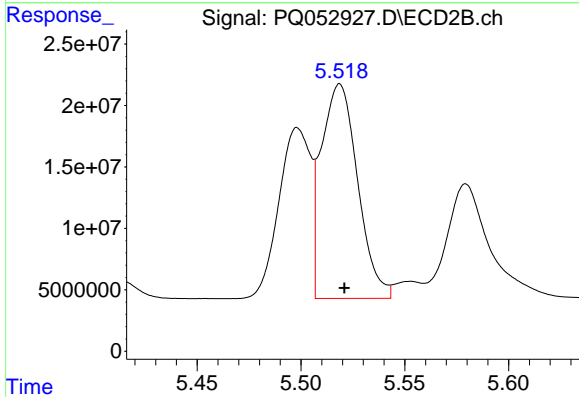
R.T.: 5.498 min
 Delta R.T.: -0.002 min
 Response: 148235499
 Conc: 419.70 ng/ml



#17 AR-1242-2

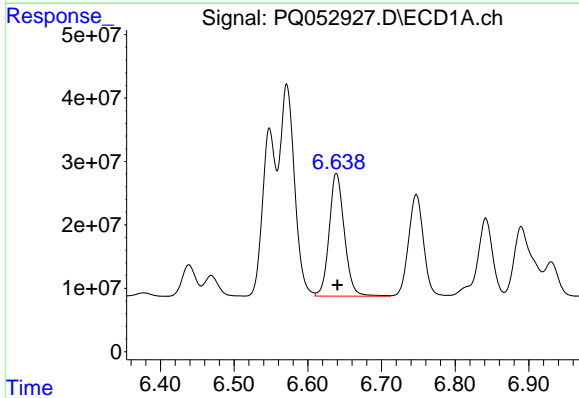
R.T.: 6.572 min
 Delta R.T.: -0.001 min
 Response: 467066867
 Conc: 396.90 ng/ml

Instrument :
 ECD_Q
 ClientSampled :



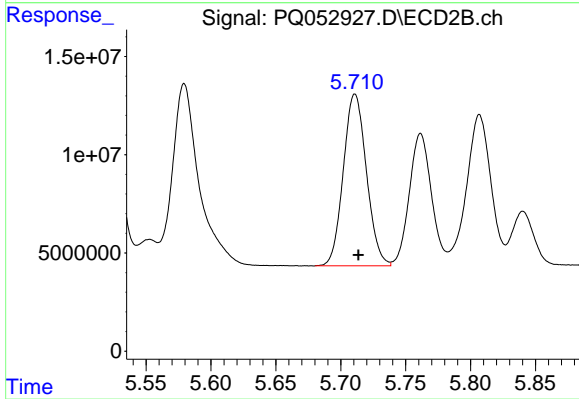
#17 AR-1242-2

R.T.: 5.519 min
 Delta R.T.: -0.002 min
 Response: 212870389
 Conc: 424.85 ng/ml



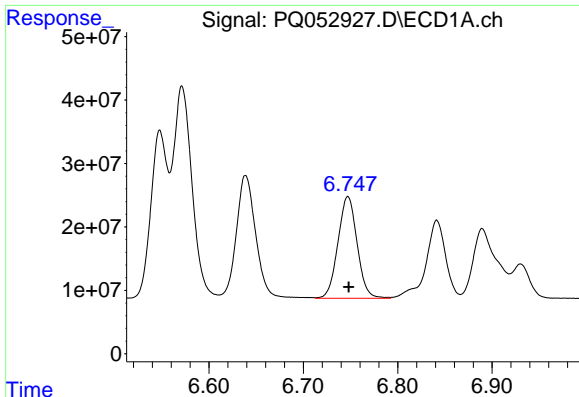
#18 AR-1242-3

R.T.: 6.639 min
 Delta R.T.: -0.001 min
 Response: 276512183
 Conc: 391.38 ng/ml



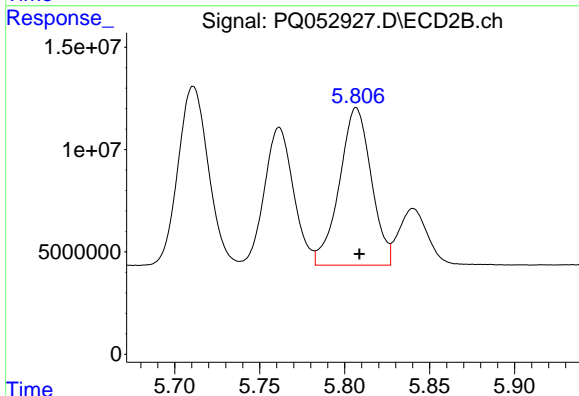
#18 AR-1242-3

R.T.: 5.711 min
 Delta R.T.: -0.003 min
 Response: 108460693
 Conc: 417.30 ng/ml

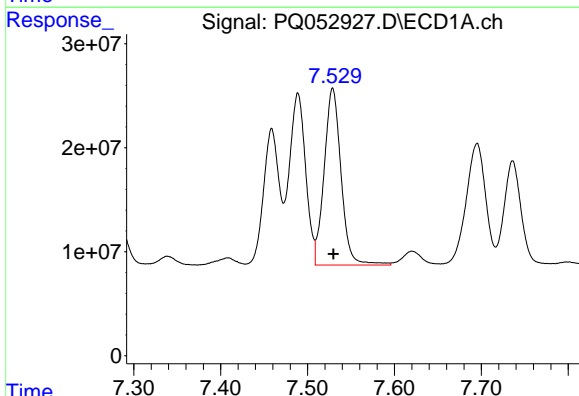


#19 AR-1242-4
 R.T.: 6.747 min
 Delta R.T.: 0.000 min
 Response: 226706934
 Conc: 385.85 ng/ml

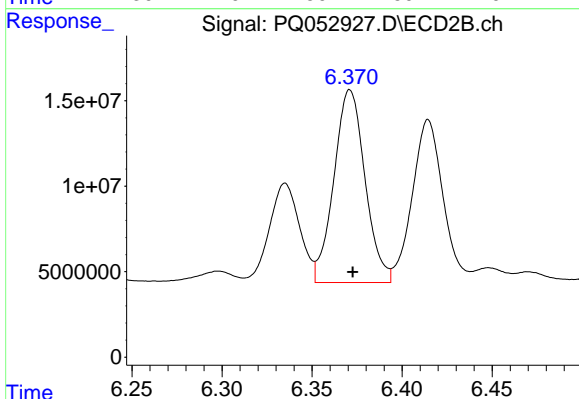
Instrument :
 ECD_Q
 ClientSampled :



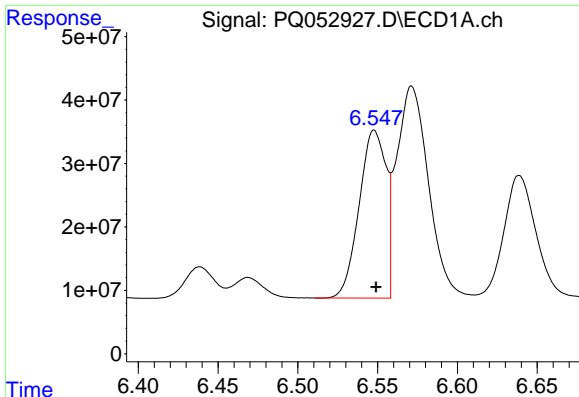
#19 AR-1242-4
 R.T.: 5.807 min
 Delta R.T.: -0.002 min
 Response: 100531700
 Conc: 409.46 ng/ml



#20 AR-1242-5
 R.T.: 7.529 min
 Delta R.T.: 0.000 min
 Response: 229544193
 Conc: 342.61 ng/ml



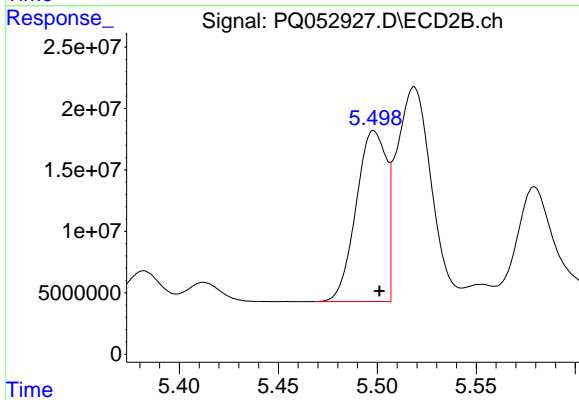
#20 AR-1242-5
 R.T.: 6.371 min
 Delta R.T.: -0.002 min
 Response: 135667722
 Conc: 390.49 ng/ml



#21 AR-1248-1

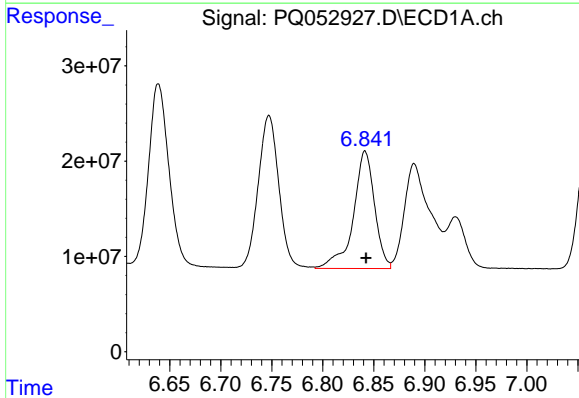
R.T.: 6.548 min
 Delta R.T.: 0.000 min
 Response: 309921115
 Conc: 564.73 ng/ml

Instrument :
 ECD_Q
 ClientSampled :



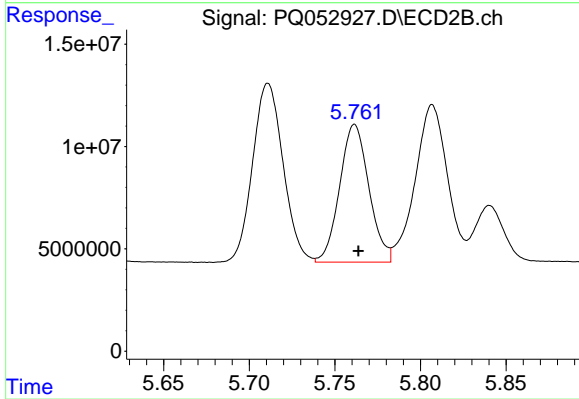
#21 AR-1248-1

R.T.: 5.498 min
 Delta R.T.: -0.003 min
 Response: 148235499
 Conc: 606.23 ng/ml



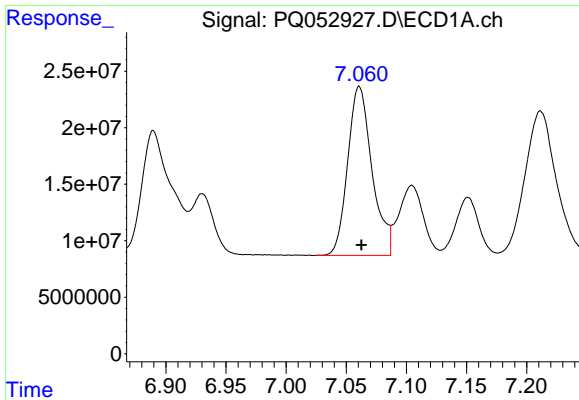
#22 AR-1248-2

R.T.: 6.842 min
 Delta R.T.: 0.000 min
 Response: 178753092
 Conc: 229.50 ng/ml



#22 AR-1248-2

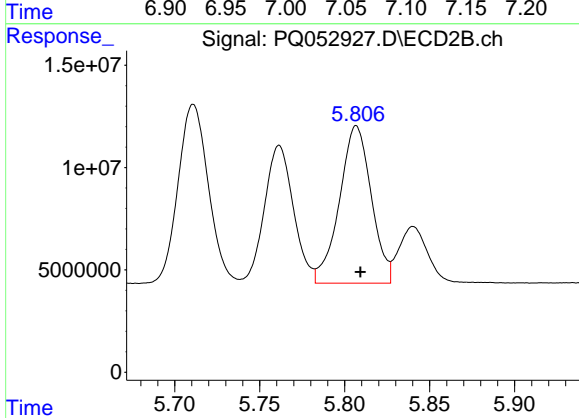
R.T.: 5.761 min
 Delta R.T.: -0.002 min
 Response: 80140326
 Conc: 241.51 ng/ml



#23 AR-1248-3

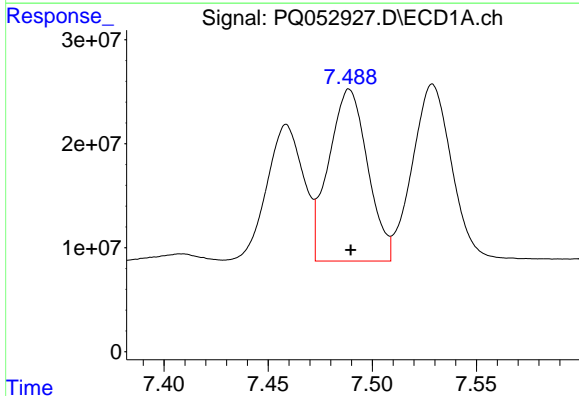
R.T.: 7.061 min
 Delta R.T.: -0.002 min
 Response: 210892260
 Conc: 236.52 ng/ml

Instrument :
 ECD_Q
 ClientSampled :



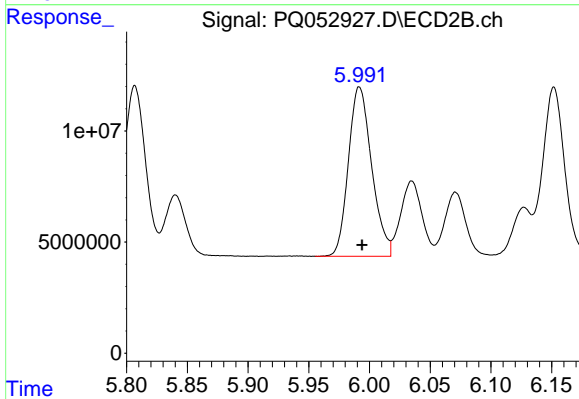
#23 AR-1248-3

R.T.: 5.807 min
 Delta R.T.: -0.002 min
 Response: 100531700
 Conc: 292.63 ng/ml



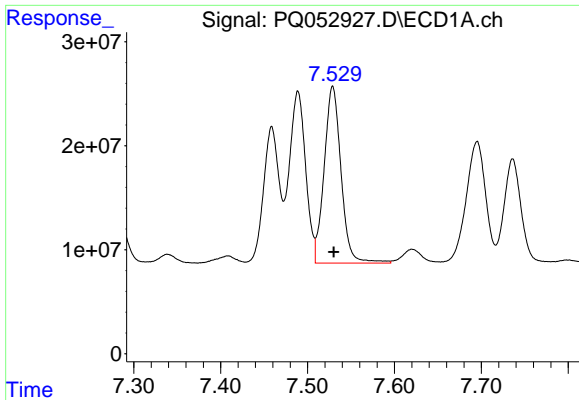
#24 AR-1248-4

R.T.: 7.489 min
 Delta R.T.: 0.000 min
 Response: 214828206
 Conc: 200.82 ng/ml



#24 AR-1248-4

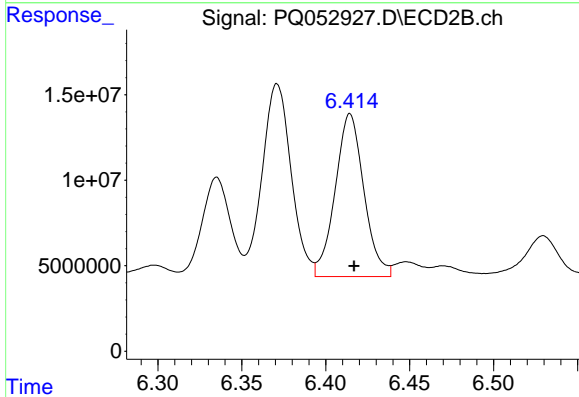
R.T.: 5.992 min
 Delta R.T.: -0.002 min
 Response: 101694079
 Conc: 245.43 ng/ml



#25 AR-1248-5

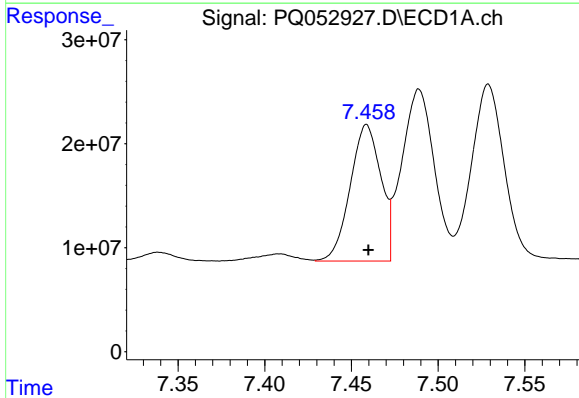
R.T.: 7.529 min
 Delta R.T.: -0.001 min
 Response: 229544193
 Conc: 215.97 ng/ml

Instrument :
 ECD_Q
 ClientSampled :



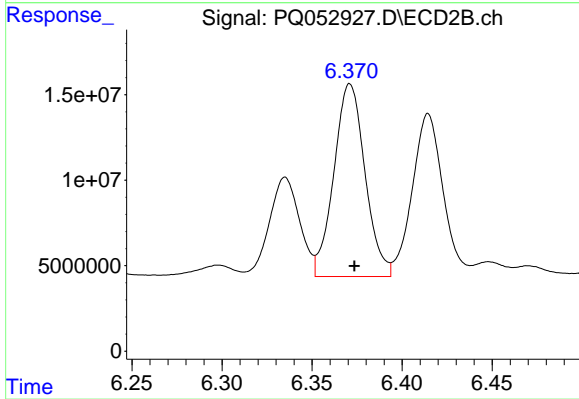
#25 AR-1248-5

R.T.: 6.414 min
 Delta R.T.: -0.002 min
 Response: 113399789
 Conc: 254.15 ng/ml



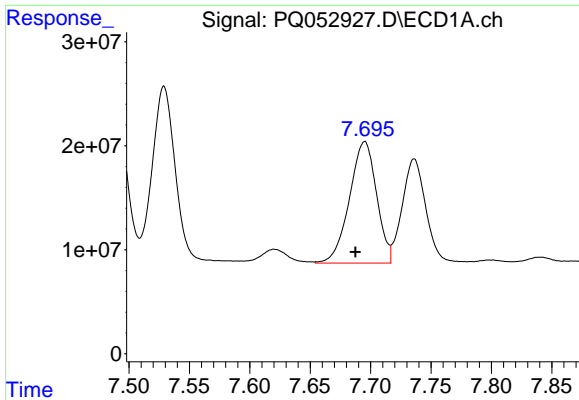
#26 AR-1254-1

R.T.: 7.459 min
 Delta R.T.: 0.000 min
 Response: 161521937
 Conc: 118.87 ng/ml



#26 AR-1254-1

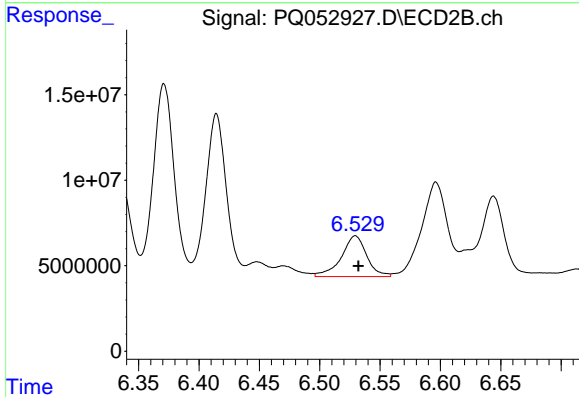
R.T.: 6.371 min
 Delta R.T.: -0.003 min
 Response: 135667722
 Conc: 151.28 ng/ml



#27 AR-1254-2

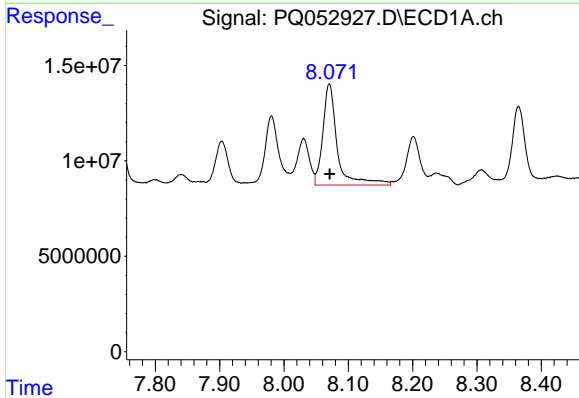
R.T.: 7.695 min
 Delta R.T.: 0.008 min
 Response: 182249305
 Conc: 85.39 ng/ml

Instrument :
 ECD_Q
 ClientSampled :



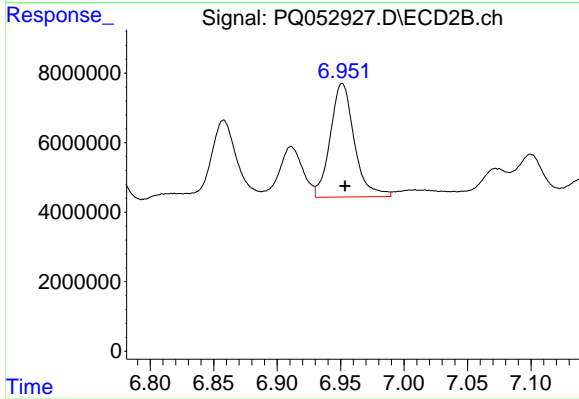
#27 AR-1254-2

R.T.: 6.530 min
 Delta R.T.: -0.003 min
 Response: 34998638
 Conc: 44.18 ng/ml



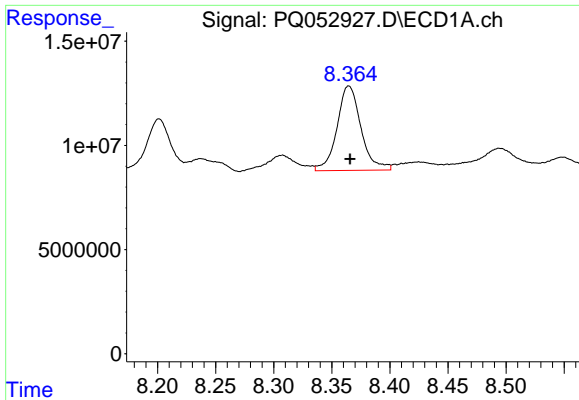
#28 AR-1254-3

R.T.: 8.071 min
 Delta R.T.: 0.000 min
 Response: 82991722
 Conc: 35.41 ng/ml



#28 AR-1254-3

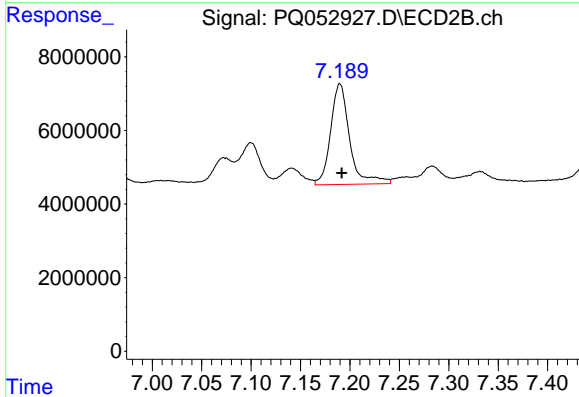
R.T.: 6.951 min
 Delta R.T.: -0.002 min
 Response: 43107437
 Conc: 33.24 ng/ml



#29 AR-1254-4

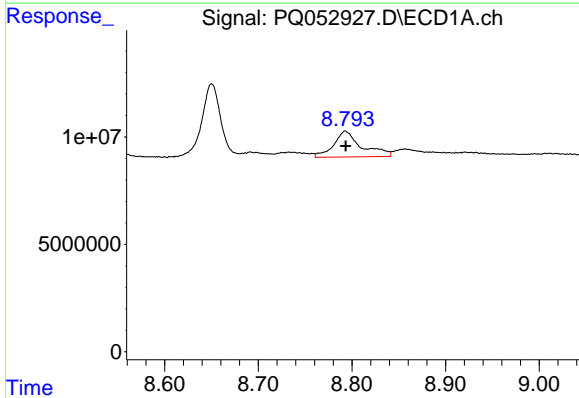
R.T.: 8.365 min
Delta R.T.: -0.001 min
Response: 58274517
Conc: 33.74 ng/ml

Instrument :
ECD_Q
ClientSampleId :



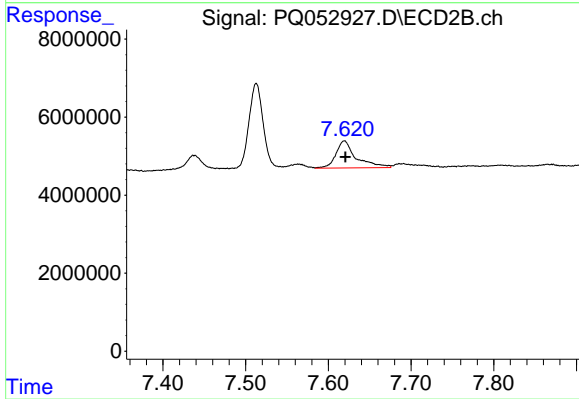
#29 AR-1254-4

R.T.: 7.190 min
Delta R.T.: -0.002 min
Response: 36766134
Conc: 41.32 ng/ml



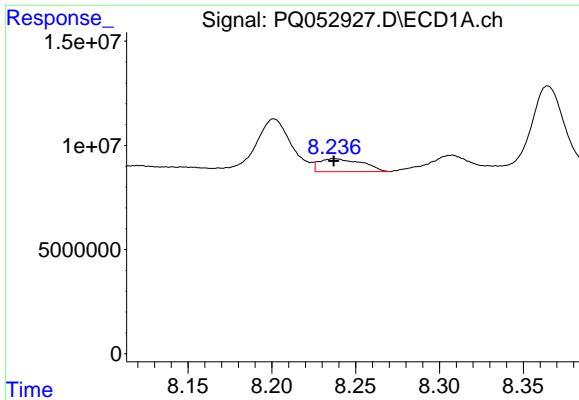
#30 AR-1254-5

R.T.: 8.793 min
Delta R.T.: 0.000 min
Response: 24927751
Conc: 13.59 ng/ml



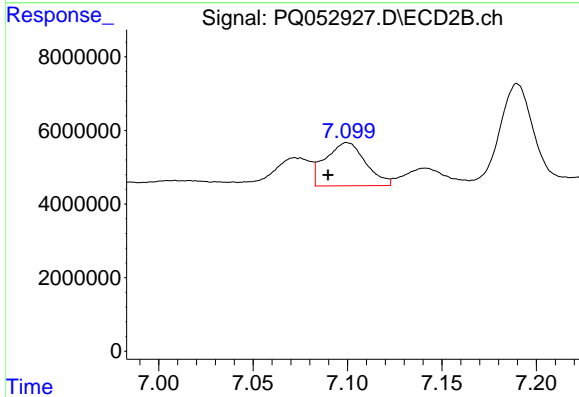
#30 AR-1254-5

R.T.: 7.619 min
Delta R.T.: -0.001 min
Response: 11819347
Conc: 9.88 ng/ml

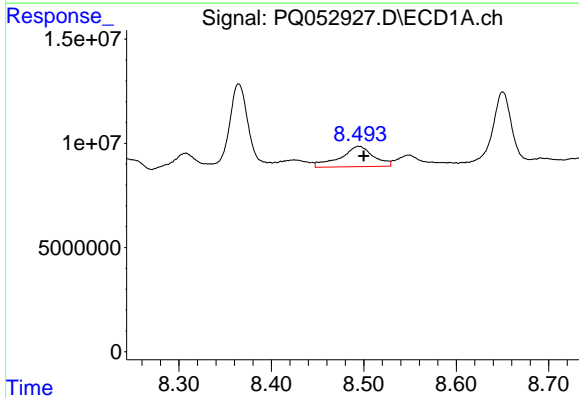


#31 AR-1260-1
 R.T.: 8.237 min
 Delta R.T.: 0.000 min
 Response: 11100375
 Conc: 10.30 ng/ml

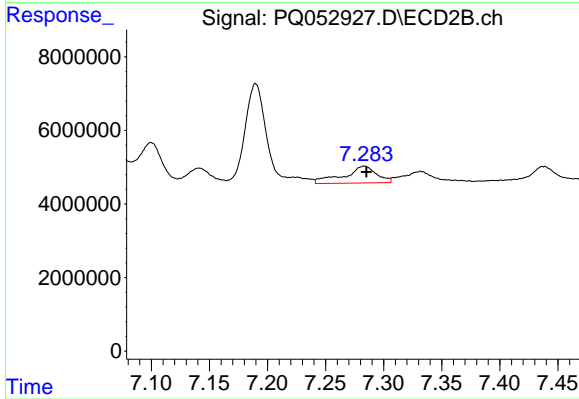
Instrument :
 ECD_Q
 ClientSampled :



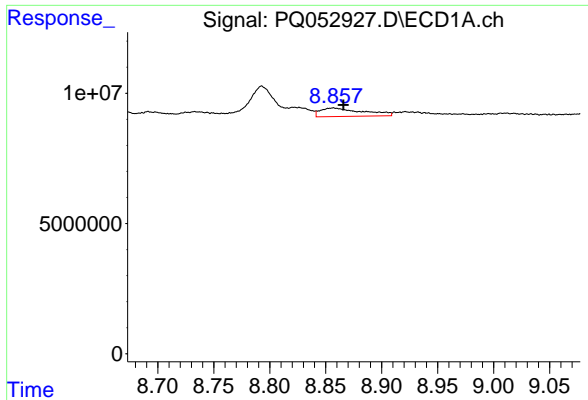
#31 AR-1260-1
 R.T.: 7.100 min
 Delta R.T.: 0.010 min
 Response: 17372715
 Conc: 30.05 ng/ml



#32 AR-1260-2
 R.T.: 8.495 min
 Delta R.T.: -0.005 min
 Response: 24509533
 Conc: 18.65 ng/ml



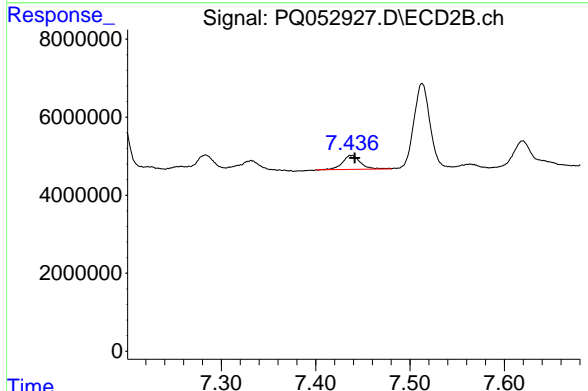
#32 AR-1260-2
 R.T.: 7.283 min
 Delta R.T.: -0.002 min
 Response: 9041989
 Conc: 11.34 ng/ml



#33 AR-1260-3

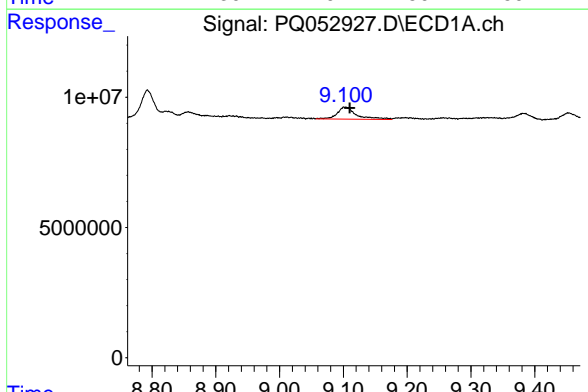
R.T.: 8.857 min
 Delta R.T.: -0.009 min
 Response: 8537136
 Conc: 8.50 ng/ml

Instrument :
 ECD_Q
 ClientSampleId :



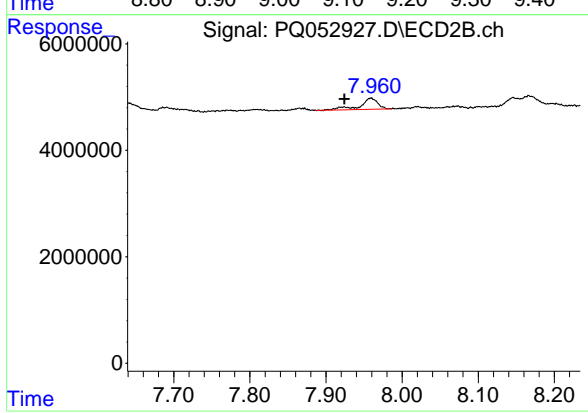
#33 AR-1260-3

R.T.: 7.438 min
 Delta R.T.: -0.004 min
 Response: 4706175
 Conc: 7.14 ng/ml



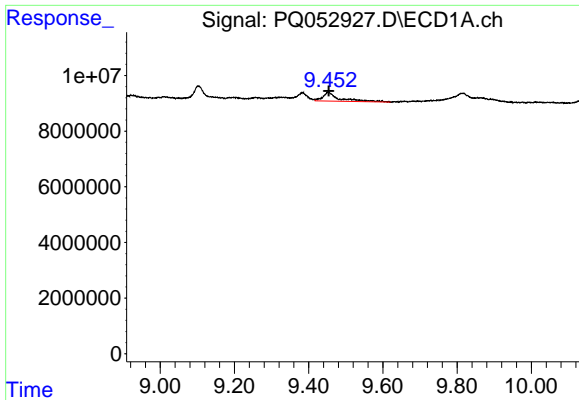
#34 AR-1260-4

R.T.: 9.103 min
 Delta R.T.: -0.007 min
 Response: 9834636
 Conc: 8.61 ng/ml



#34 AR-1260-4

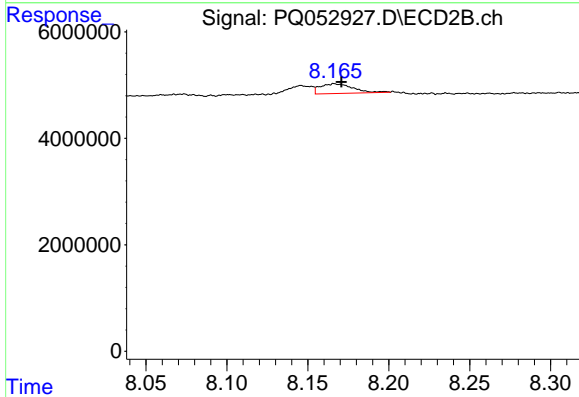
R.T.: 7.959 min
 Delta R.T.: 0.035 min
 Response: 3385606
 Conc: 6.00 ng/ml



#35 AR-1260-5

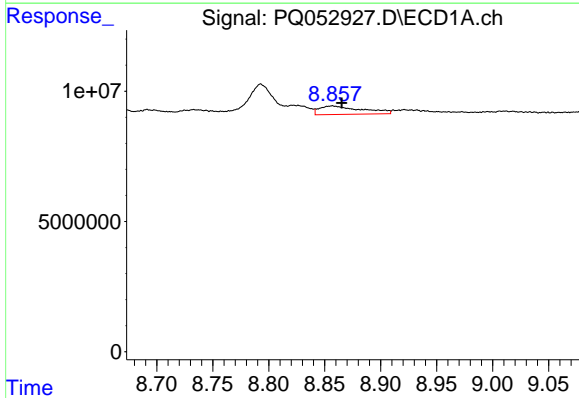
R.T.: 9.453 min
 Delta R.T.: -0.001 min
 Response: 10098393
 Conc: 4.24 ng/ml

Instrument :
 ECD_Q
 ClientSampled :



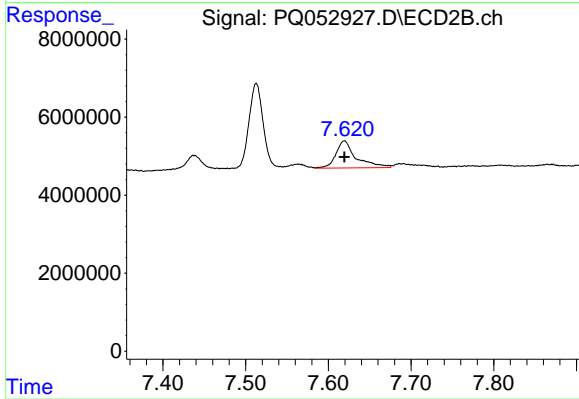
#35 AR-1260-5

R.T.: 8.166 min
 Delta R.T.: -0.004 min
 Response: 2561898
 Conc: 1.67 ng/ml



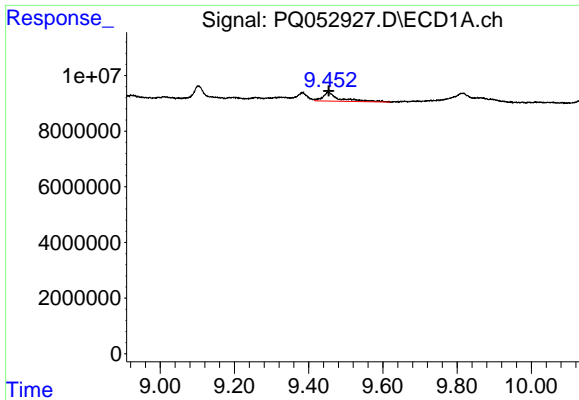
#36 AR-1262-1

R.T.: 8.857 min
 Delta R.T.: -0.008 min
 Response: 8537136
 Conc: 4.70 ng/ml



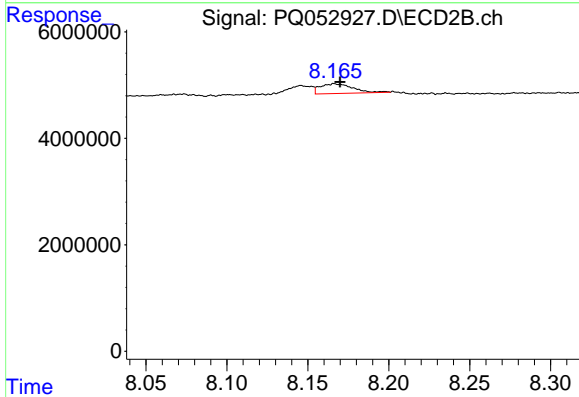
#36 AR-1262-1

R.T.: 7.619 min
 Delta R.T.: 0.000 min
 Response: 11819347
 Conc: 23.47 ng/ml

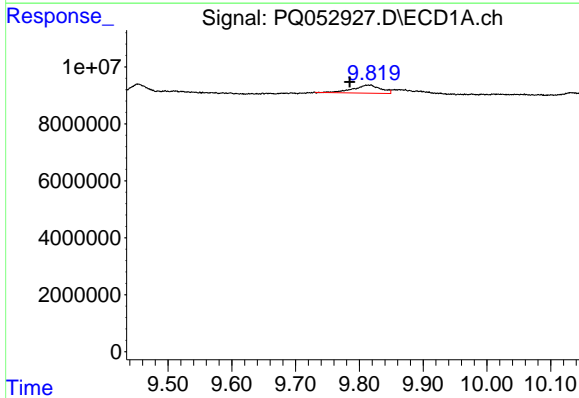


#37 AR-1262-2
 R.T.: 9.453 min
 Delta R.T.: 0.000 min
 Response: 10098393
 Conc: 3.02 ng/ml

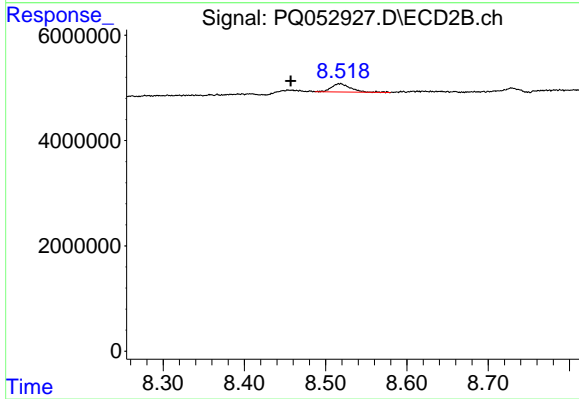
Instrument :
 ECD_Q
 ClientSampleId :



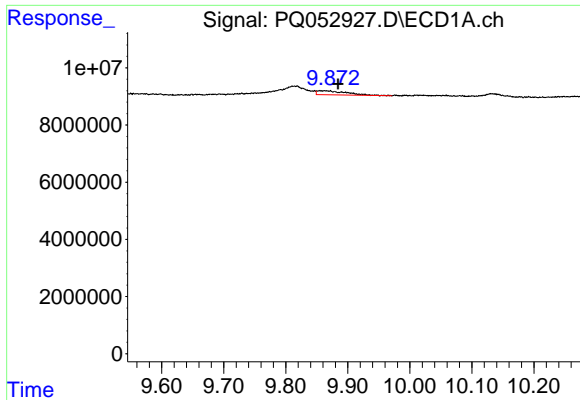
#37 AR-1262-2
 R.T.: 8.166 min
 Delta R.T.: -0.003 min
 Response: 2561898
 Conc: 1.23 ng/ml



#38 AR-1262-3
 R.T.: 9.815 min
 Delta R.T.: 0.030 min
 Response: 8532199
 Conc: 3.85 ng/ml



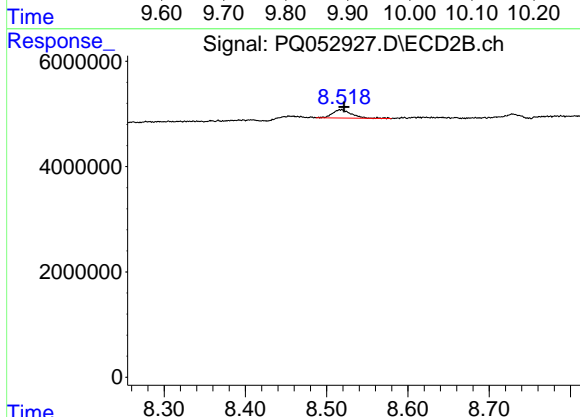
#38 AR-1262-3
 R.T.: 8.518 min
 Delta R.T.: 0.061 min
 Response: 2601080
 Conc: 3.22 ng/ml



#39 AR-1262-4

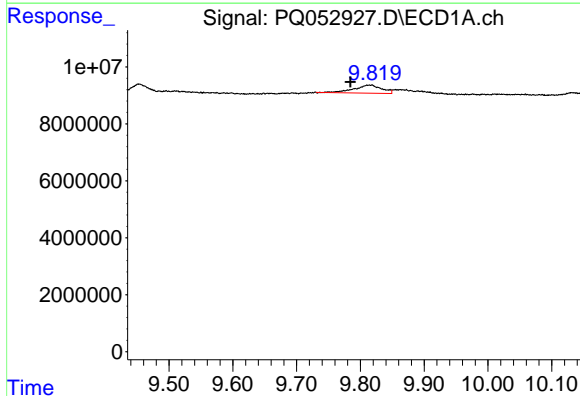
R.T.: 9.862 min
 Delta R.T.: -0.022 min
 Response: 4458894
 Conc: 2.55 ng/ml

Instrument :
 ECD_Q
 ClientSampleId :



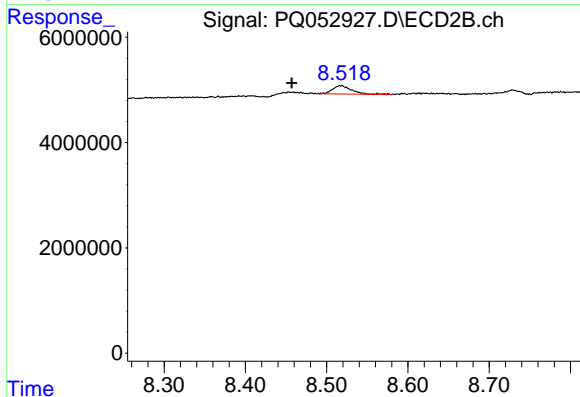
#39 AR-1262-4

R.T.: 8.518 min
 Delta R.T.: -0.003 min
 Response: 2601080
 Conc: 1.87 ng/ml



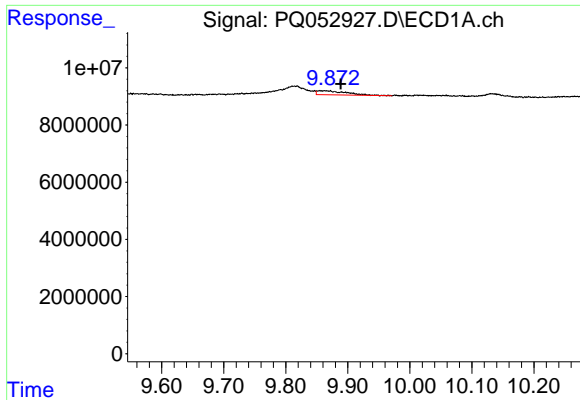
#41 AR-1268-1

R.T.: 9.815 min
 Delta R.T.: 0.030 min
 Response: 8532199
 Conc: 2.17 ng/ml



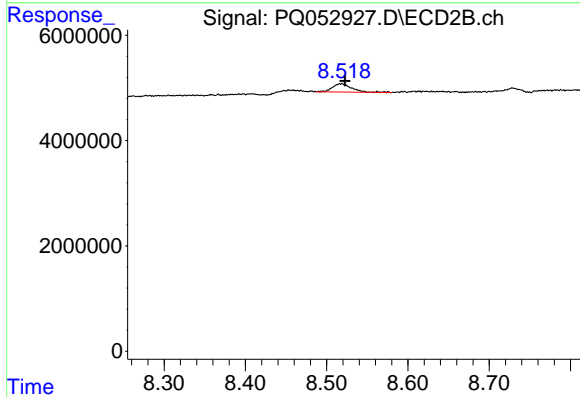
#41 AR-1268-1

R.T.: 8.518 min
 Delta R.T.: 0.061 min
 Response: 2601080
 Conc: 1.10 ng/ml

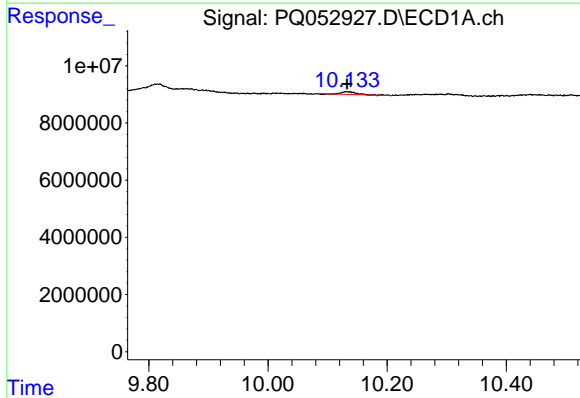


#42 AR-1268-2
 R.T.: 9.862 min
 Delta R.T.: -0.026 min
 Response: 4458894
 Conc: 1.20 ng/ml

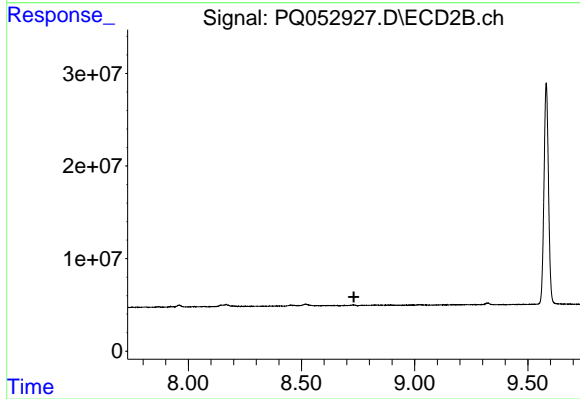
Instrument :
 ECD_Q
 ClientSampleId :



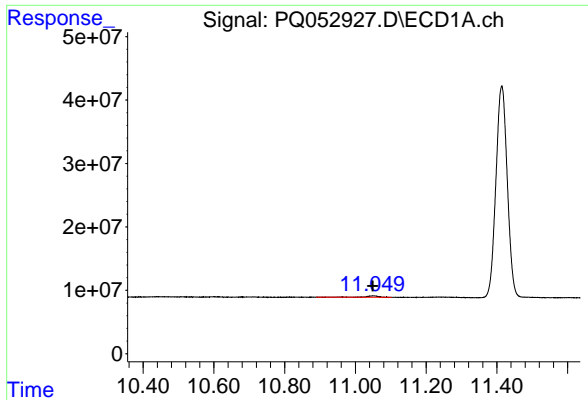
#42 AR-1268-2
 R.T.: 8.518 min
 Delta R.T.: -0.004 min
 Response: 2601080
 Conc: 1.28 ng/ml



#43 AR-1268-3
 R.T.: 10.133 min
 Delta R.T.: 0.000 min
 Response: 1758821
 Conc: 0.55 ng/ml



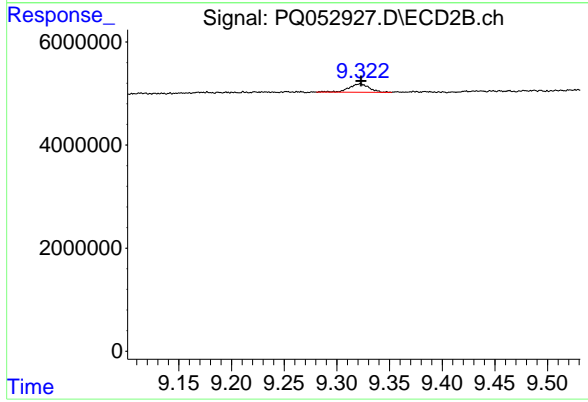
#43 AR-1268-3
 R.T.: 0.000 min
 Exp R.T. : 8.732 min
 Response: 0
 Conc: N.D.



#45 AR-1268-5

R.T.: 11.050 min
Delta R.T.: 0.001 min
Response: 5982332
Conc: 0.56 ng/ml

Instrument :
ECD_Q
ClientSampleId :



#45 AR-1268-5

R.T.: 9.322 min
Delta R.T.: 0.000 min
Response: 2169076
Conc: 0.45 ng/ml