

Data Path : Z:\pestpcbsrv\HPCHEM1\ECD\_Q\Data\PQ040720\  
 Data File : PQ047303.D  
 Signal(s) : Signal #1: ECD1A.ch Signal #2: ECD2B.ch  
 Acq On : 06 Apr 2020 21:12  
 Operator : AJ\MA  
 Sample : PQ040720ICV500  
 Misc :  
 ALS Vial : 20 Sample Multiplier: 1

Integration File signal 1: autoint1.e  
 Integration File signal 2: autoint2.e  
 Quant Time: Apr 07 06:20:13 2020  
 Quant Method : Z:\pestpcbsrv\HPCHEM1\ECD\_Q\Method\PQ040720.M  
 Quant Title : GC EXTRACTABLES  
 QLast Update : Tue Apr 07 06:16:03 2020  
 Response via : Initial Calibration  
 Integrator: ChemStation

Volume Inj. : 2 µl  
 Signal #1 Phase : ZB-MR1 Signal #2 Phase: ZB-MR2  
 Signal #1 Info : 30Mx0.32mmx 0.50µ Signal #2 Info : 30M x 0.32mm x 0.25µm

Compound	RT#1	RT#2	Resp#1	Resp#2	ng/ml	ng/ml
-----						
System Monitoring Compounds						
1) SA Tetrachlo...	5.104	4.262	834.8E6	126.6E6	50.581	51.720
2) SA Decachlor...	11.175	9.646	446.5E6	141.9E6	52.561	53.226
Target Compounds						
3) L1 AR-1016-1	6.418	5.535	10763006	1242389	18.282	13.583 #
4) L1 AR-1016-2	6.443	5.556	12721523	967252	15.416	7.811 #
5) L1 AR-1016-3	6.506	5.753	6776099	717131	13.544	11.221
6) L1 AR-1016-4	6.614	5.799	5438046	27873752	13.231	541.232 #
7) L1 AR-1016-5	6.930	6.033	99017101	16612985	258.704	246.559
9) L2 AR-1221-2	5.455	4.622	14956328	1655473	95.881	74.880
10) L2 AR-1221-3	5.534	0.000	5865568	0	12.438	N.D. #
11) L3 AR-1232-1	5.534	0.000	5865568	0	18.212	N.D. #
12) L3 AR-1232-2	6.107	5.556	13514469	967252	75.722	19.594 #
13) L3 AR-1232-3	6.443	5.753	12721523	717131	37.956	28.176 #
14) L3 AR-1232-4	6.614	5.844	5438046	8078126	31.974	358.209 #
15) L3 AR-1232-5	6.712	6.033	169.3E6	16612985	1354.796	664.447 #
16) L4 AR-1242-1	6.418	5.535	10763006	1242389	25.015	18.353 #
17) L4 AR-1242-2	6.443	5.556	12721523	967252	21.178	10.656 #
18) L4 AR-1242-3	6.506	5.753	6776099	717131	18.471	14.722
19) L4 AR-1242-4	6.614	5.844	5438046	8078126	17.783	172.717 #
20) L4 AR-1242-5	7.400	6.414	92090268	72707747	288.553	1161.214 #
21) L5 AR-1248-1	6.418	5.535	10763006	1242389	33.758	24.761 #
22) L5 AR-1248-2	6.712	5.799	169.3E6	27873752	406.476	437.305
23) L5 AR-1248-3	6.930	5.844	99017101	8078126	218.174	124.444 #
24) L5 AR-1248-4	7.357	6.033	152.7E6	16612985	294.230	207.300 #
25) L5 AR-1248-5	7.400	6.458	92090268	8485485	188.947	104.158 #
26) L6 AR-1254-1	7.329	6.414	294.0E6	72707747	467.232	479.586
27) L6 AR-1254-2	7.557	6.572	444.3E6	63122543	472.598	480.422
28) L6 AR-1254-3	7.939	6.998	448.1E6	105.3E6	476.269	485.765
29) L6 AR-1254-4	8.233	7.236	357.8E6	68838328	475.117	484.128
30) L6 AR-1254-5	8.662	7.668	329.6E6	93569946	481.155	489.548
31) L7 AR-1260-1	8.106	7.133	179.3E6	49021588	301.192	393.705 #
32) L7 AR-1260-2	8.370	7.328	211.4E6	40873916	284.682	262.837
33) L7 AR-1260-3	8.726	7.487	44775372	40772795	78.235	286.780 #
34) L7 AR-1260-4	8.961	7.973	123.2E6	4304138	224.988	35.400 #
35) L7 AR-1260-5	9.303	8.217	47954502	10162163	42.094	33.051
36) L8 AR-1262-1	8.726	7.668	44775372	93569946	56.055	1081.648 #
37) L8 AR-1262-2	9.303	8.217	47954502	10162163	38.892	31.399
38) L8 AR-1262-3	9.644	8.571	33666185	10496033	42.123	84.163 #
39) L8 AR-1262-4	9.694	8.571	7960673	10496033	13.292	44.464 #
40) L8 AR-1262-5	10.397	0.000	1862099	0	4.669	N.D. #
41) L9 AR-1268-1	9.644	8.571	33666185	10496033	22.388	26.502
42) L9 AR-1268-2	9.694	8.571	7960673	10496033	6.133	28.603 #

Data Path : Z:\pestpcbsrv\HPCHEM1\ECD\_Q\Data\PQ040720\  
 Data File : PQ047303.D  
 Signal(s) : Signal #1: ECD1A.ch Signal #2: ECD2B.ch  
 Acq On : 06 Apr 2020 21:12  
 Operator : AJ\MA  
 Sample : PQ040720ICV500  
 Misc :  
 ALS Vial : 20 Sample Multiplier: 1

Integration File signal 1: autoint1.e  
 Integration File signal 2: autoint2.e  
 Quant Time: Apr 07 06:20:13 2020  
 Quant Method : Z:\pestpcbsrv\HPCHEM1\ECD\_Q\Method\PQ040720.M  
 Quant Title : GC EXTRACTABLES  
 QLast Update : Tue Apr 07 06:16:03 2020  
 Response via : Initial Calibration  
 Integrator: ChemStation

Volume Inj. : 2 µl  
 Signal #1 Phase : ZB-MR1 Signal #2 Phase: ZB-MR2  
 Signal #1 Info : 30Mx0.32mmx 0.50µ Signal #2 Info : 30M x 0.32mm x 0.25µm

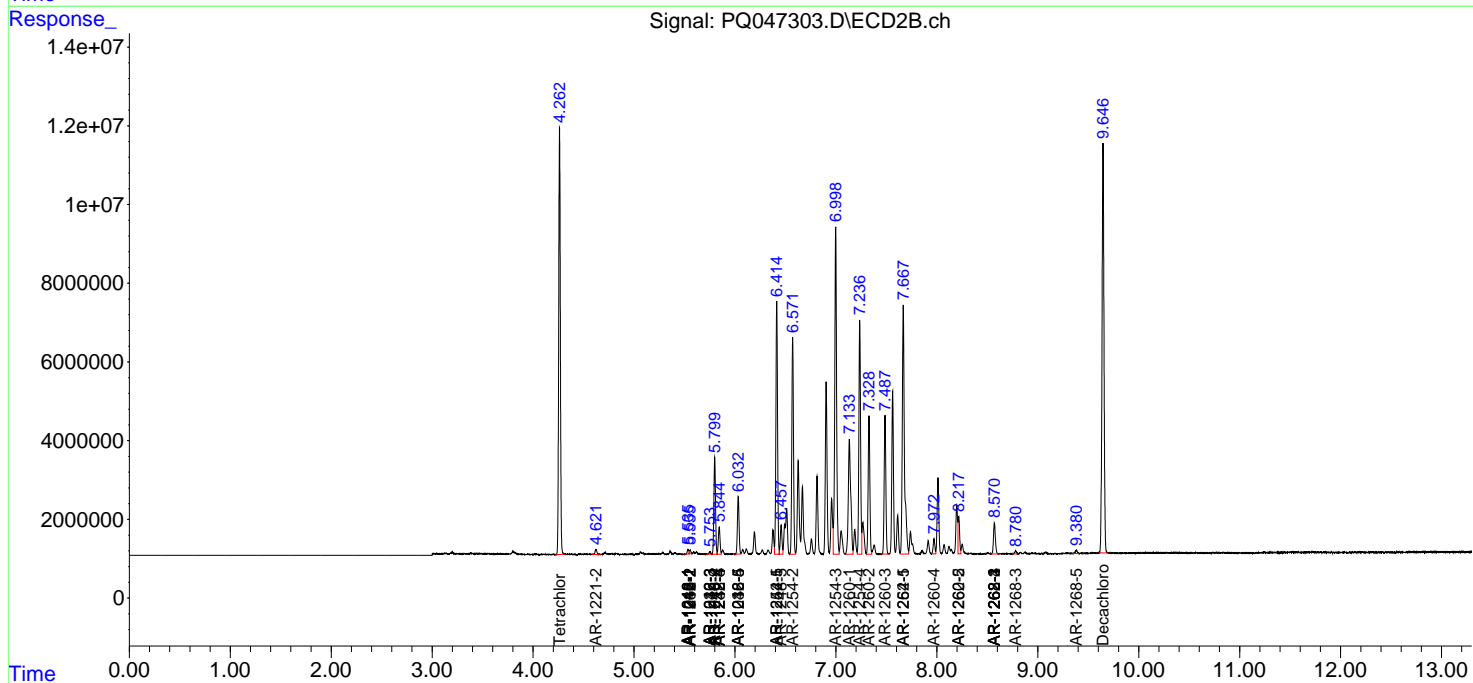
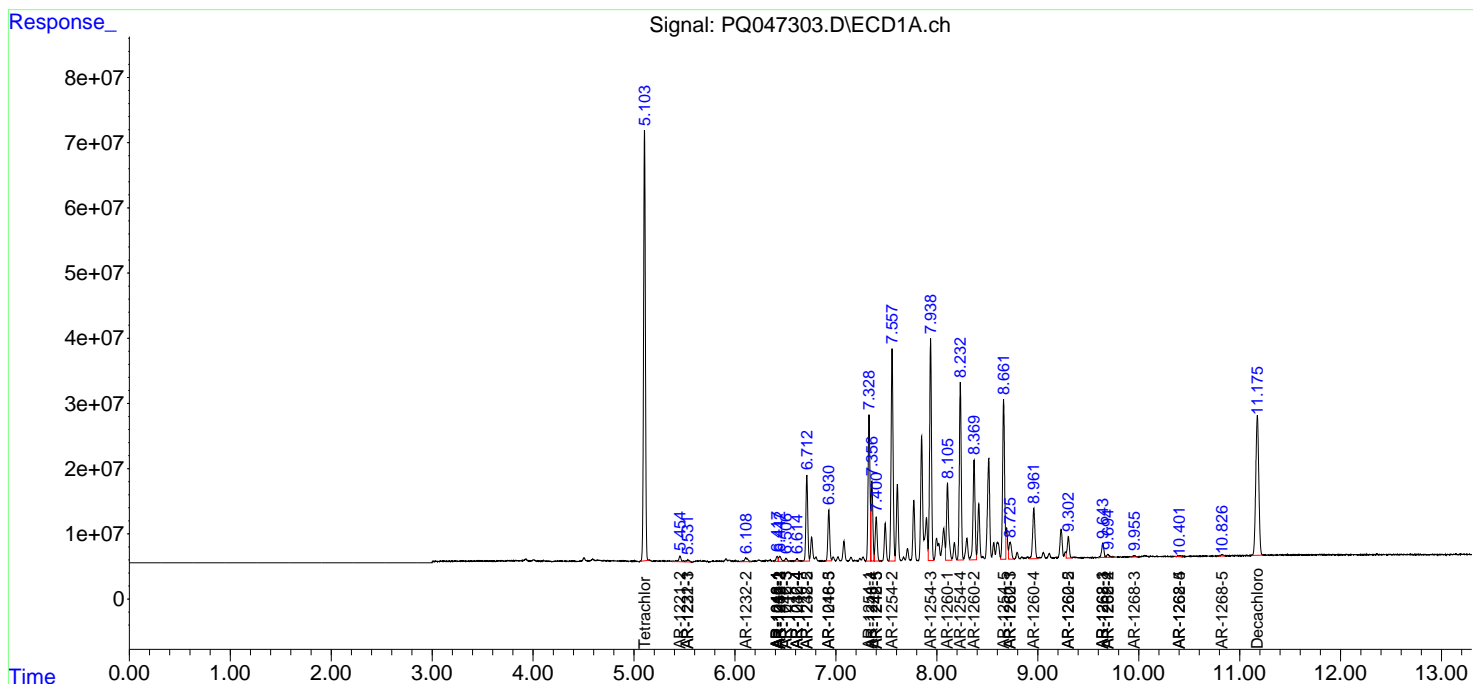
	Compound	RT#1	RT#2	Resp#1	Resp#2	ng/ml	ng/ml
43)	L9 AR-1268-3	9.956	8.780	3500508	860378	3.218	2.850
44)	L9 AR-1268-4	10.397	0.000	1862099	0	3.938	N.D. #
45)	L9 AR-1268-5	10.827	9.382	4235393	1095528	1.418	1.087

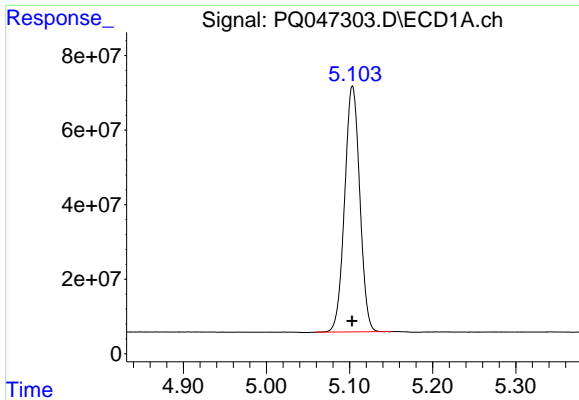
(f)=RT Delta > 1/2 Window (#)=Amounts differ by > 25% (m)=manual int.

Data Path : Z:\pestpcbsrv\HPCHEM1\ECD\_Q\Data\PQ040720\  
 Data File : PQ047303.D  
 Signal(s) : Signal #1: ECD1A.ch Signal #2: ECD2B.ch  
 Acq On : 06 Apr 2020 21:12  
 Operator : AJ\MA  
 Sample : PQ040720ICV500  
 Misc :  
 ALS Vial : 20 Sample Multiplier: 1

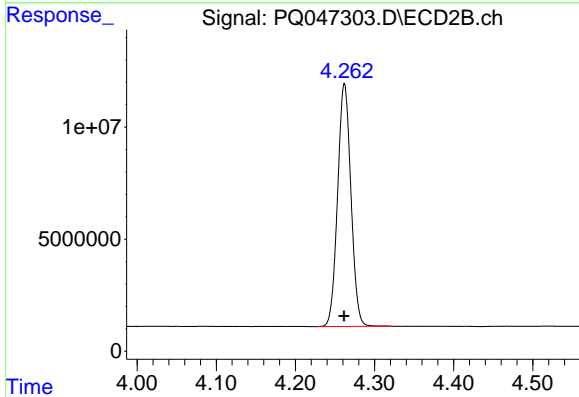
Integration File signal 1: autoint1.e  
 Integration File signal 2: autoint2.e  
 Quant Time: Apr 07 06:20:13 2020  
 Quant Method : Z:\pestpcbsrv\HPCHEM1\ECD\_Q\Method\PQ040720.M  
 Quant Title : GC EXTRACTABLES  
 QLast Update : Tue Apr 07 06:16:03 2020  
 Response via : Initial Calibration  
 Integrator: ChemStation

Volume Inj. : 2 µl  
 Signal #1 Phase : ZB-MR1 Signal #2 Phase: ZB-MR2  
 Signal #1 Info : 30Mx0.32mmx 0.50µ Signal #2 Info : 30M x 0.32mm x 0.25µm

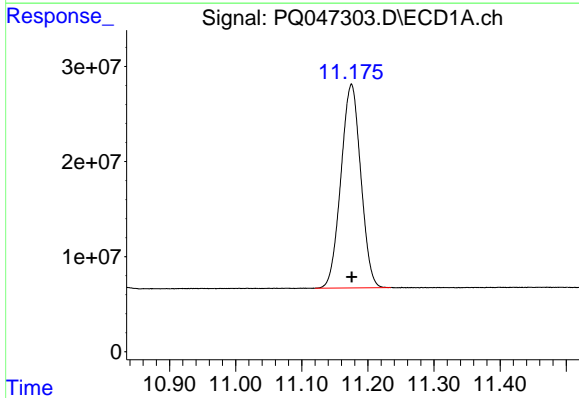




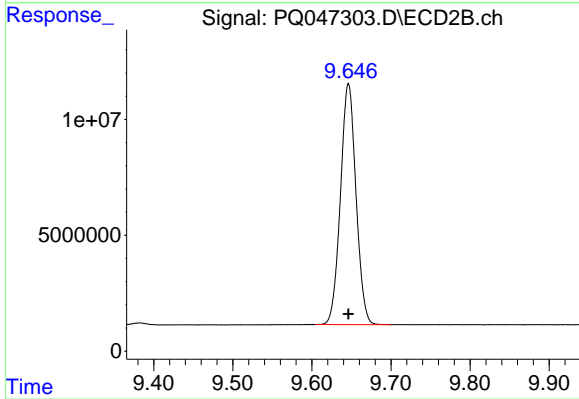
#1 Tetrachloro-m-xylene  
R.T.: 5.104 min  
Delta R.T.: 0.000 min  
Response: 834807631  
Conc: 50.58 ng/ml



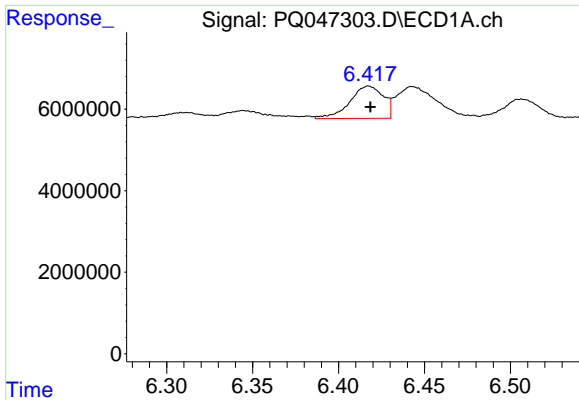
#1 Tetrachloro-m-xylene  
R.T.: 4.262 min  
Delta R.T.: 0.000 min  
Response: 126606527  
Conc: 51.72 ng/ml



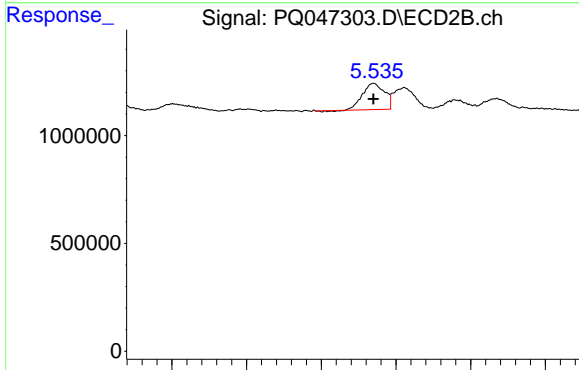
#2 Decachlorobiphenyl  
R.T.: 11.175 min  
Delta R.T.: 0.000 min  
Response: 446499359  
Conc: 52.56 ng/ml



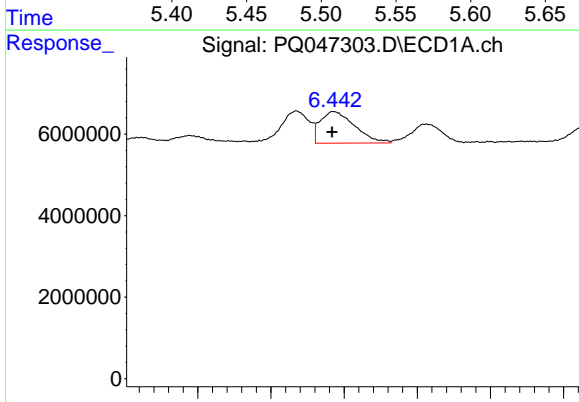
#2 Decachlorobiphenyl  
R.T.: 9.646 min  
Delta R.T.: 0.000 min  
Response: 141928745  
Conc: 53.23 ng/ml



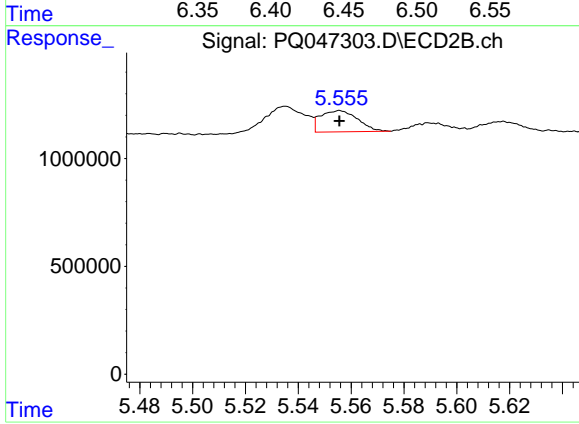
#3 AR-1016-1  
 R.T.: 6.418 min  
 Delta R.T.: 0.000 min  
 Response: 10763006  
 Conc: 18.28 ng/ml



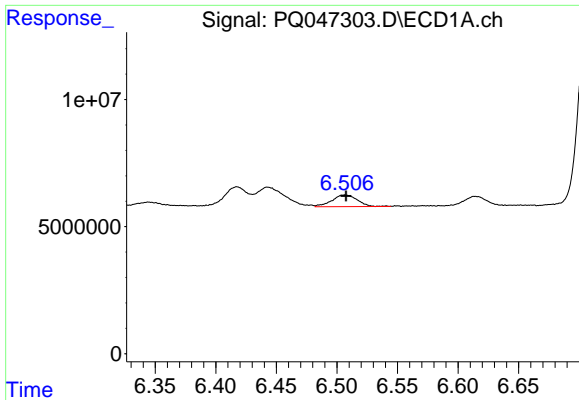
#3 AR-1016-1  
 R.T.: 5.535 min  
 Delta R.T.: 0.000 min  
 Response: 1242389  
 Conc: 13.58 ng/ml



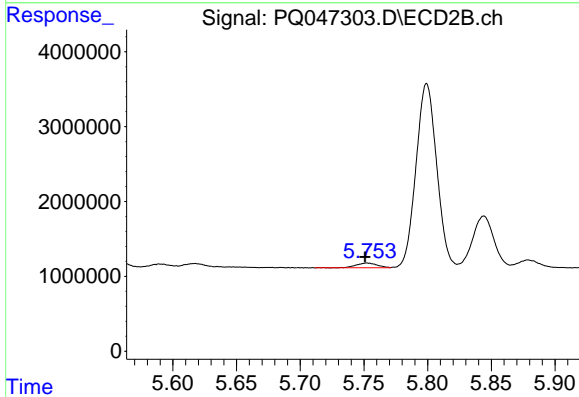
#4 AR-1016-2  
 R.T.: 6.443 min  
 Delta R.T.: 0.001 min  
 Response: 12721523  
 Conc: 15.42 ng/ml



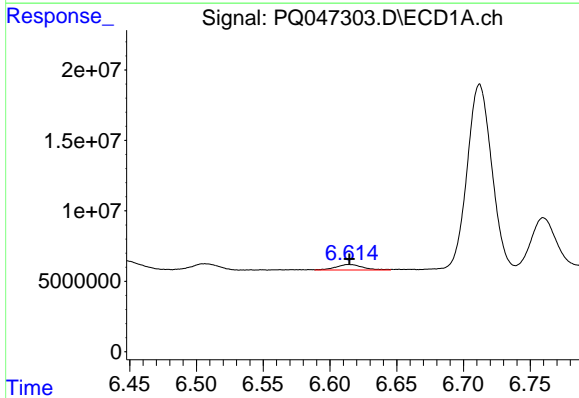
#4 AR-1016-2  
 R.T.: 5.556 min  
 Delta R.T.: 0.000 min  
 Response: 967252  
 Conc: 7.81 ng/ml



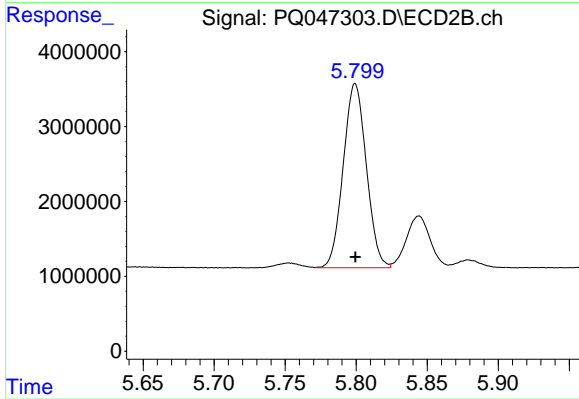
#5 AR-1016-3  
 R.T.: 6.506 min  
 Delta R.T.: -0.001 min  
 Response: 6776099  
 Conc: 13.54 ng/ml



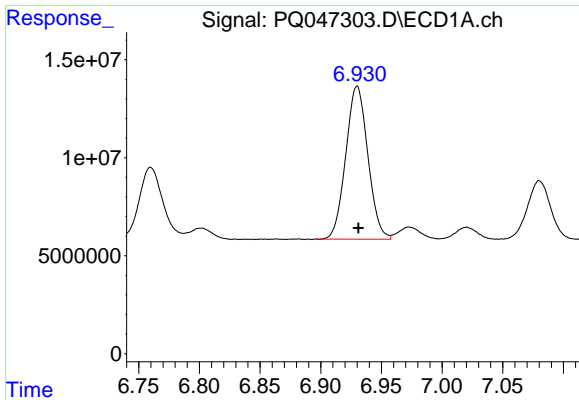
#5 AR-1016-3  
 R.T.: 5.753 min  
 Delta R.T.: 0.002 min  
 Response: 717131  
 Conc: 11.22 ng/ml



#6 AR-1016-4  
 R.T.: 6.614 min  
 Delta R.T.: 0.000 min  
 Response: 5438046  
 Conc: 13.23 ng/ml

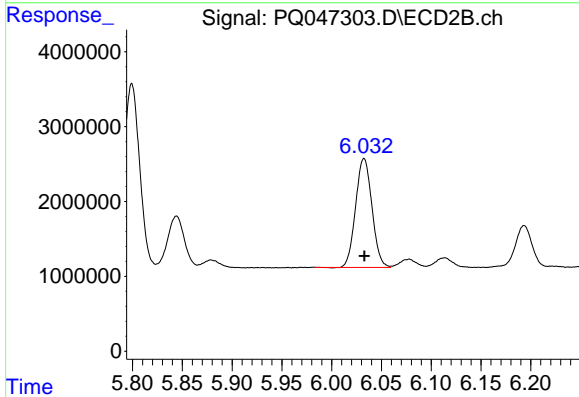


#6 AR-1016-4  
 R.T.: 5.799 min  
 Delta R.T.: 0.000 min  
 Response: 27873752  
 Conc: 541.23 ng/ml



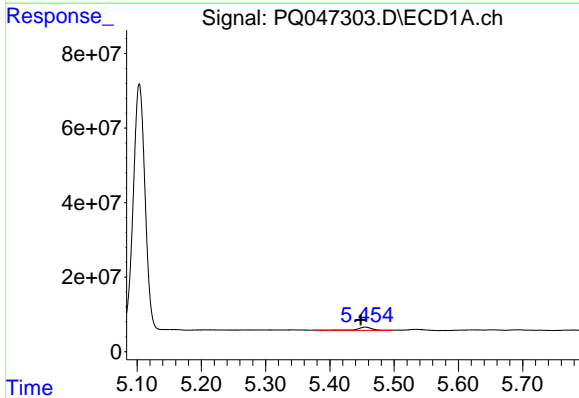
#7 AR-1016-5

R.T.: 6.930 min  
Delta R.T.: -0.001 min  
Response: 99017101  
Conc: 258.70 ng/ml



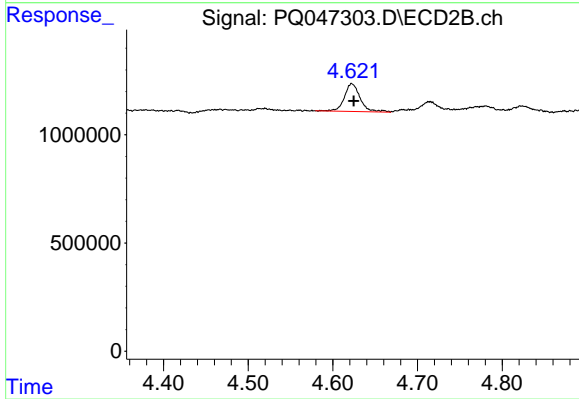
#7 AR-1016-5

R.T.: 6.033 min  
Delta R.T.: 0.000 min  
Response: 16612985  
Conc: 246.56 ng/ml



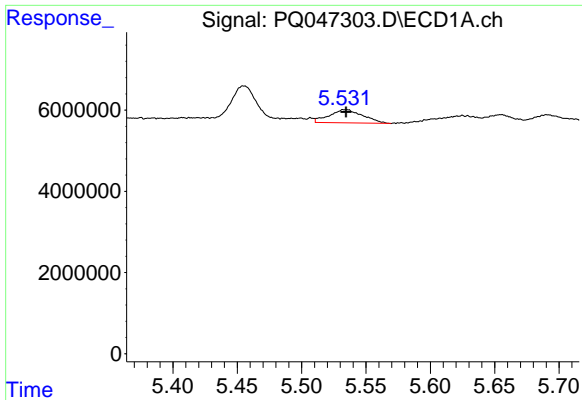
#9 AR-1221-2

R.T.: 5.455 min  
Delta R.T.: 0.007 min  
Response: 14956328  
Conc: 95.88 ng/ml



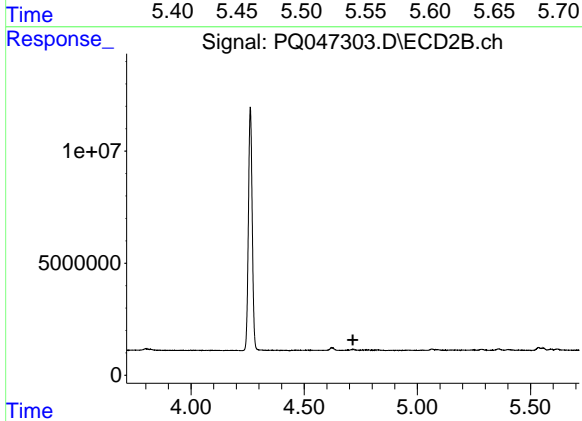
#9 AR-1221-2

R.T.: 4.622 min  
Delta R.T.: -0.002 min  
Response: 1655473  
Conc: 74.88 ng/ml



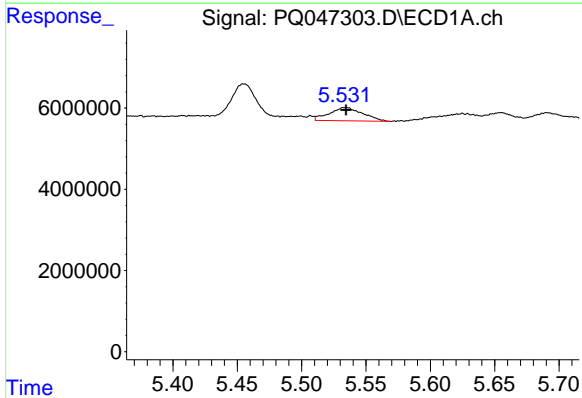
#10 AR-1221-3

R.T.: 5.534 min  
Delta R.T.: 0.000 min  
Response: 5865568  
Conc: 12.44 ng/ml



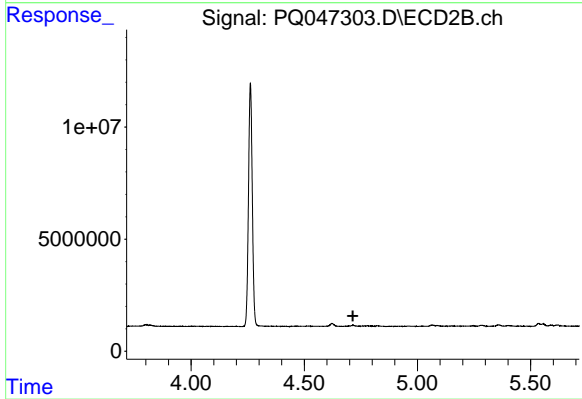
#10 AR-1221-3

R.T.: 0.000 min  
Exp R.T. : 4.715 min  
Response: 0  
Conc: N.D.



#11 AR-1232-1

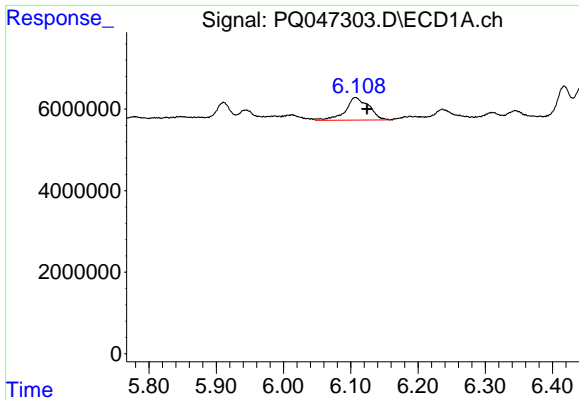
R.T.: 5.534 min  
Delta R.T.: 0.000 min  
Response: 5865568  
Conc: 18.21 ng/ml



#11 AR-1232-1

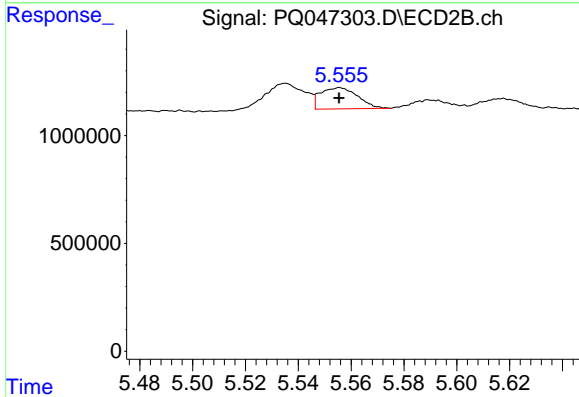
R.T.: 0.000 min  
Exp R.T. : 4.715 min  
Response: 0  
Conc: N.D.





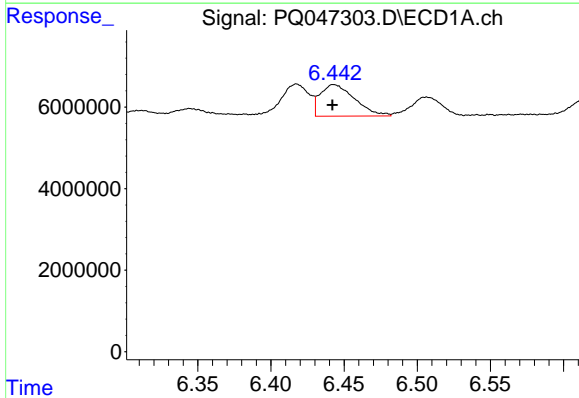
#12 AR-1232-2

R.T.: 6.107 min  
Delta R.T.: -0.017 min  
Response: 13514469  
Conc: 75.72 ng/ml



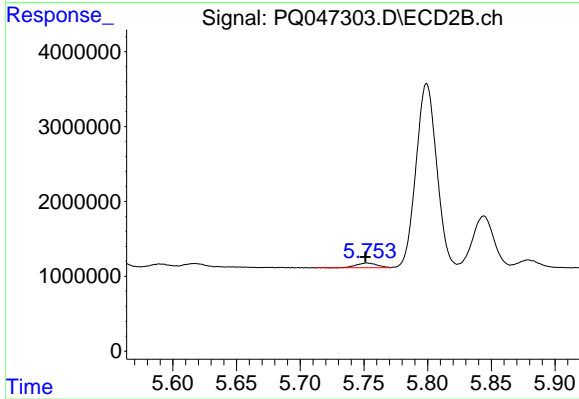
#12 AR-1232-2

R.T.: 5.556 min  
Delta R.T.: 0.000 min  
Response: 967252  
Conc: 19.59 ng/ml



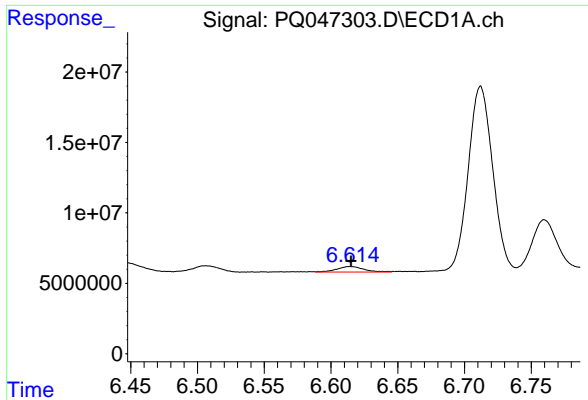
#13 AR-1232-3

R.T.: 6.443 min  
Delta R.T.: 0.000 min  
Response: 12721523  
Conc: 37.96 ng/ml

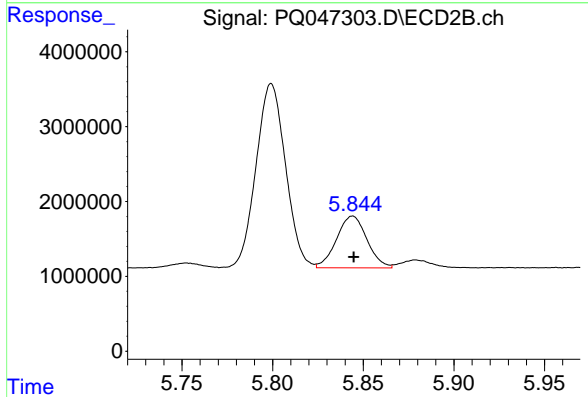


#13 AR-1232-3

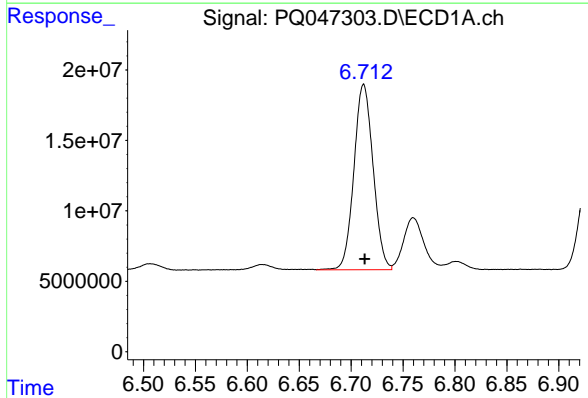
R.T.: 5.753 min  
Delta R.T.: 0.001 min  
Response: 717131  
Conc: 28.18 ng/ml



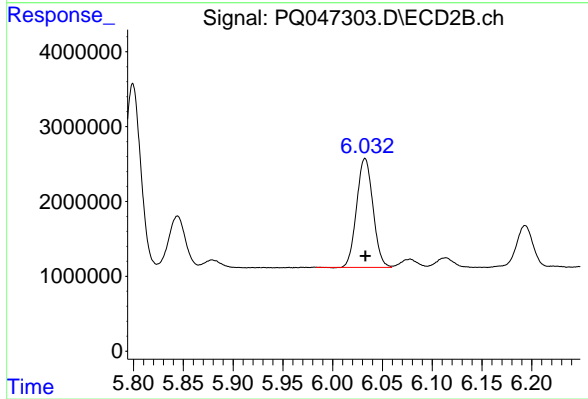
#14 AR-1232-4  
R.T.: 6.614 min  
Delta R.T.: 0.000 min  
Response: 5438046  
Conc: 31.97 ng/ml



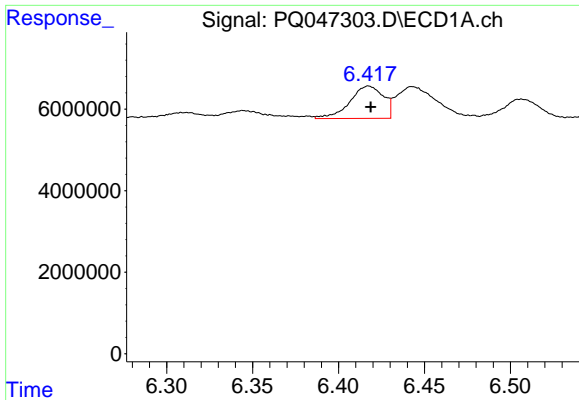
#14 AR-1232-4  
R.T.: 5.844 min  
Delta R.T.: 0.000 min  
Response: 8078126  
Conc: 358.21 ng/ml



#15 AR-1232-5  
R.T.: 6.712 min  
Delta R.T.: -0.001 min  
Response: 169348615  
Conc: 1354.80 ng/ml

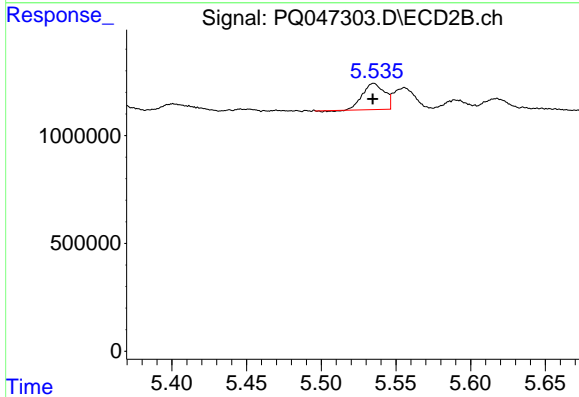


#15 AR-1232-5  
R.T.: 6.033 min  
Delta R.T.: 0.000 min  
Response: 16612985  
Conc: 664.45 ng/ml



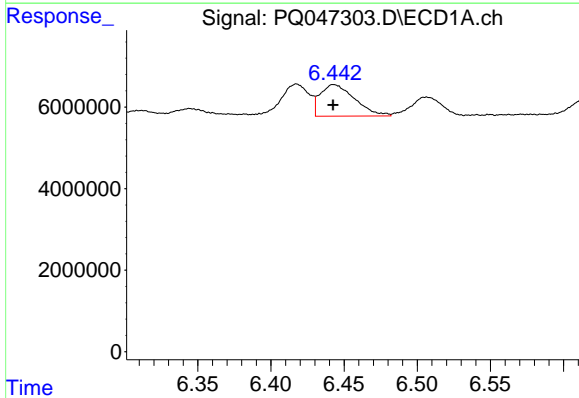
#16 AR-1242-1

R.T.: 6.418 min  
Delta R.T.: -0.001 min  
Response: 10763006  
Conc: 25.01 ng/ml



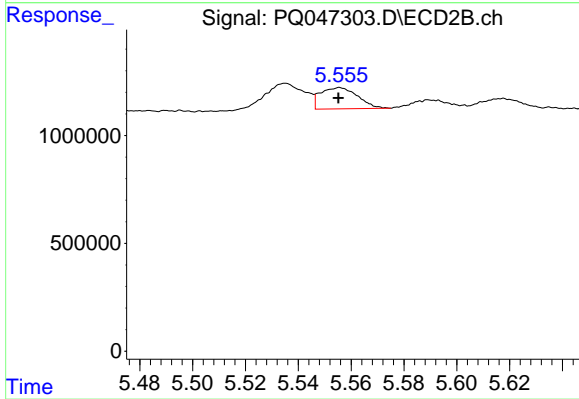
#16 AR-1242-1

R.T.: 5.535 min  
Delta R.T.: 0.000 min  
Response: 1242389  
Conc: 18.35 ng/ml



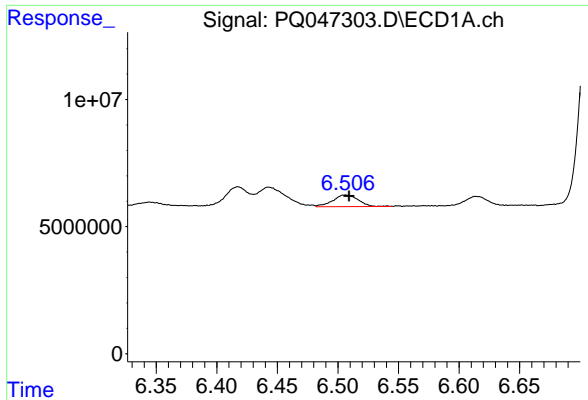
#17 AR-1242-2

R.T.: 6.443 min  
Delta R.T.: 0.000 min  
Response: 12721523  
Conc: 21.18 ng/ml



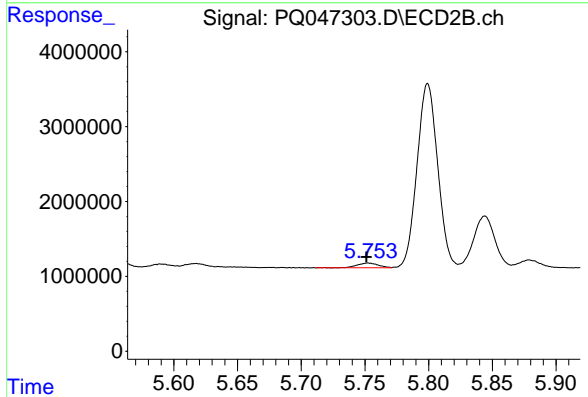
#17 AR-1242-2

R.T.: 5.556 min  
Delta R.T.: 0.000 min  
Response: 967252  
Conc: 10.66 ng/ml



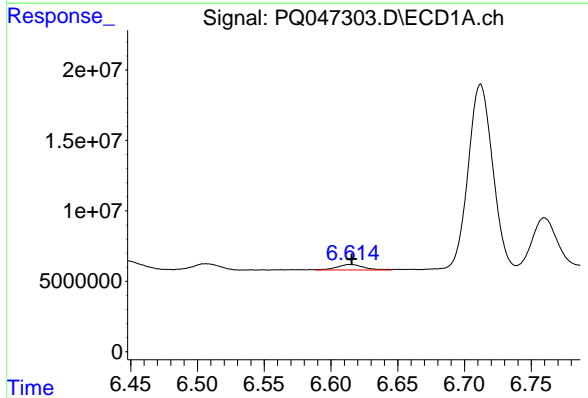
#18 AR-1242-3

R.T.: 6.506 min  
Delta R.T.: -0.003 min  
Response: 6776099  
Conc: 18.47 ng/ml



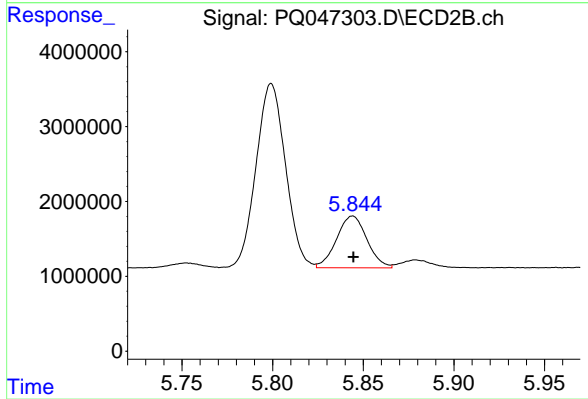
#18 AR-1242-3

R.T.: 5.753 min  
Delta R.T.: 0.001 min  
Response: 717131  
Conc: 14.72 ng/ml



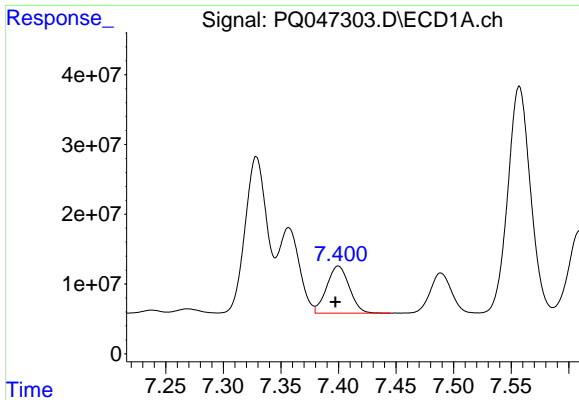
#19 AR-1242-4

R.T.: 6.614 min  
Delta R.T.: -0.001 min  
Response: 5438046  
Conc: 17.78 ng/ml



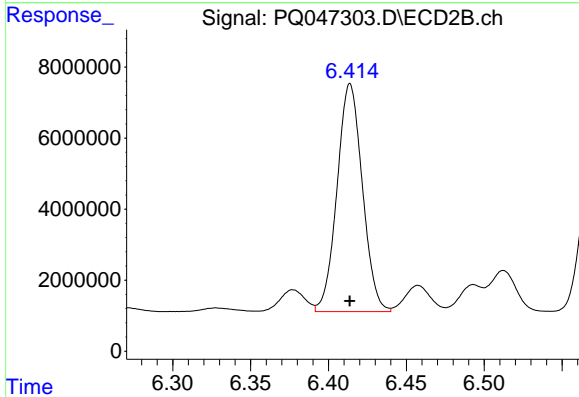
#19 AR-1242-4

R.T.: 5.844 min  
Delta R.T.: 0.000 min  
Response: 8078126  
Conc: 172.72 ng/ml



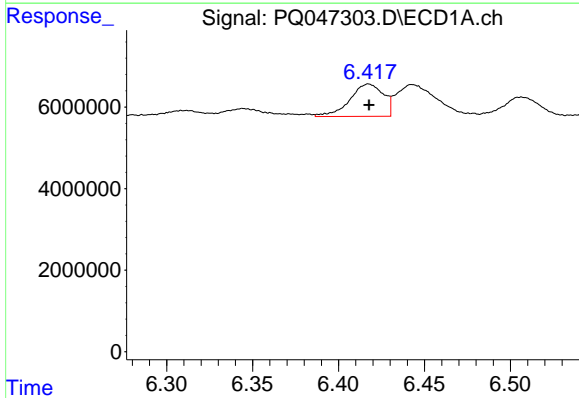
#20 AR-1242-5

R.T.: 7.400 min  
Delta R.T.: 0.003 min  
Response: 92090268  
Conc: 288.55 ng/ml



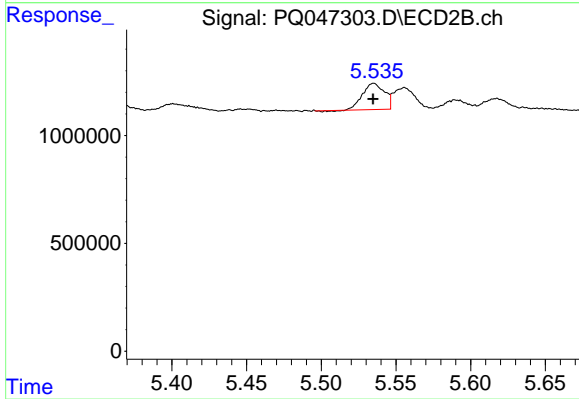
#20 AR-1242-5

R.T.: 6.414 min  
Delta R.T.: 0.000 min  
Response: 72707747  
Conc: 1161.21 ng/ml



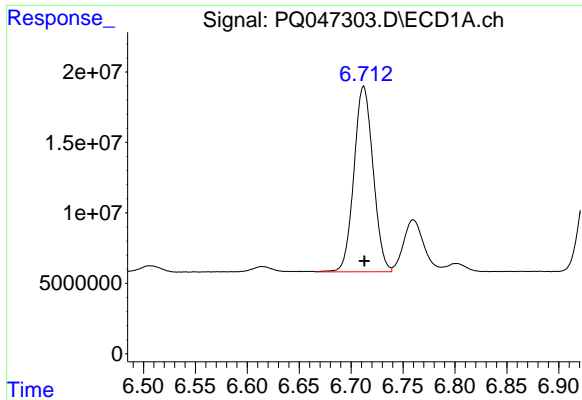
#21 AR-1248-1

R.T.: 6.418 min  
Delta R.T.: 0.000 min  
Response: 10763006  
Conc: 33.76 ng/ml



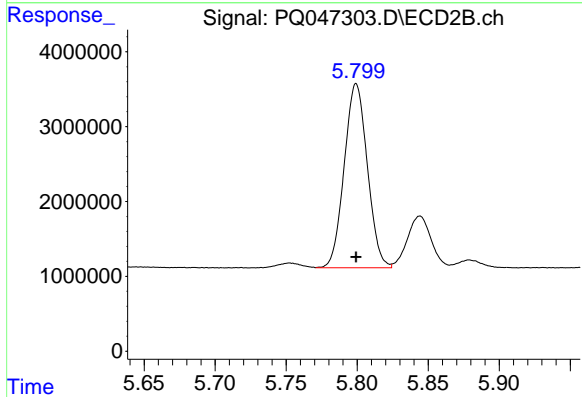
#21 AR-1248-1

R.T.: 5.535 min  
Delta R.T.: 0.000 min  
Response: 1242389  
Conc: 24.76 ng/ml



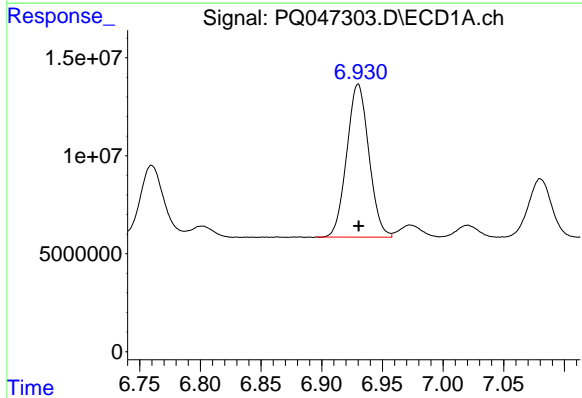
#22 AR-1248-2

R.T.: 6.712 min  
Delta R.T.: 0.000 min  
Response: 169348615  
Conc: 406.48 ng/ml



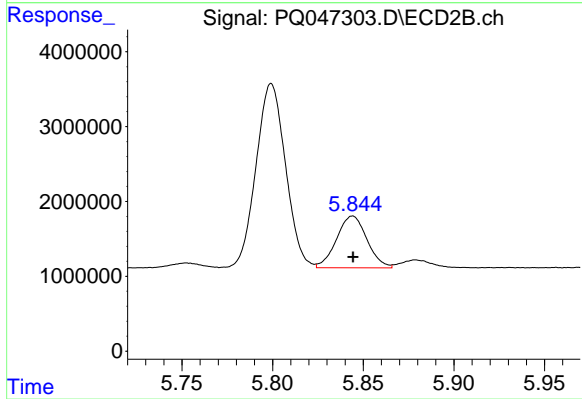
#22 AR-1248-2

R.T.: 5.799 min  
Delta R.T.: 0.000 min  
Response: 27873752  
Conc: 437.31 ng/ml



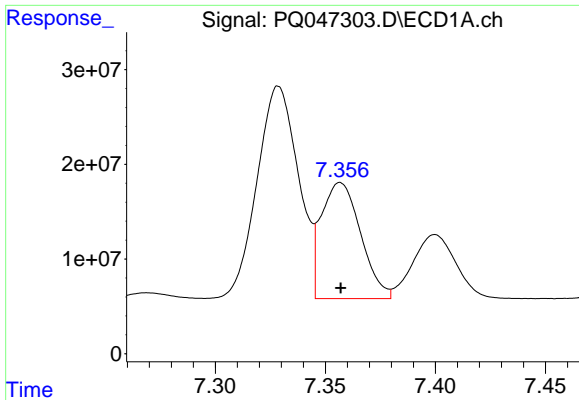
#23 AR-1248-3

R.T.: 6.930 min  
Delta R.T.: 0.000 min  
Response: 99017101  
Conc: 218.17 ng/ml



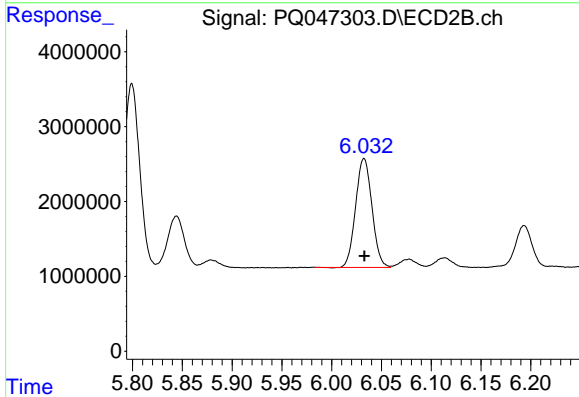
#23 AR-1248-3

R.T.: 5.844 min  
Delta R.T.: 0.000 min  
Response: 8078126  
Conc: 124.44 ng/ml



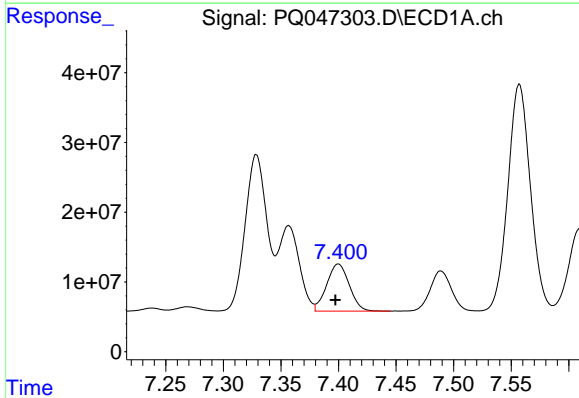
#24 AR-1248-4

R.T.: 7.357 min  
Delta R.T.: 0.000 min  
Response: 152655893  
Conc: 294.23 ng/ml



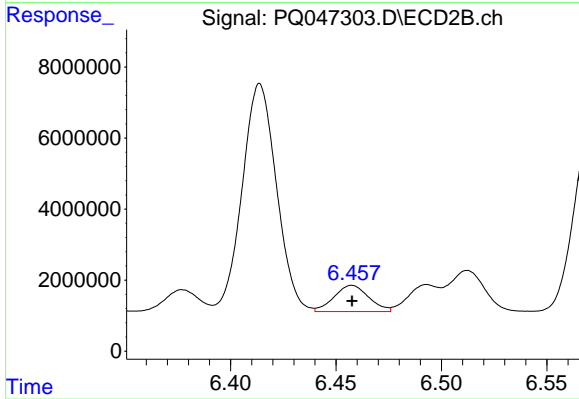
#24 AR-1248-4

R.T.: 6.033 min  
Delta R.T.: 0.000 min  
Response: 16612985  
Conc: 207.30 ng/ml



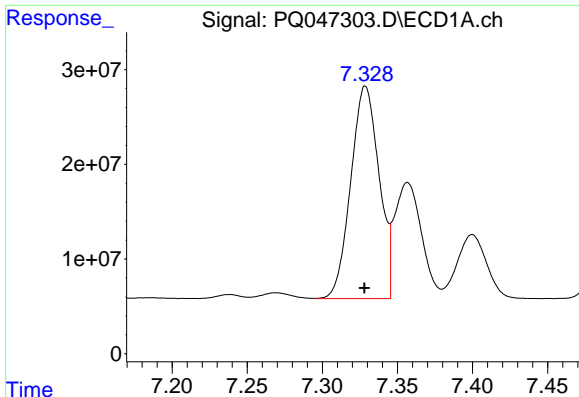
#25 AR-1248-5

R.T.: 7.400 min  
Delta R.T.: 0.003 min  
Response: 92090268  
Conc: 188.95 ng/ml



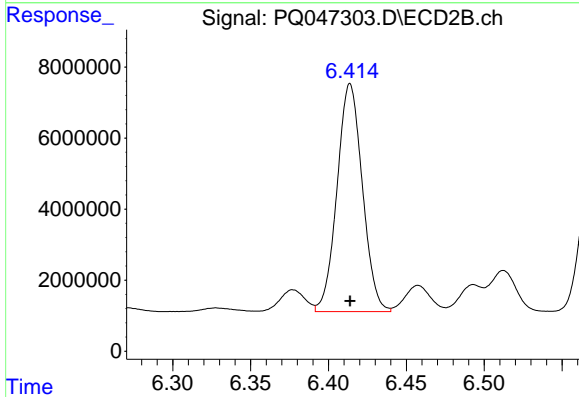
#25 AR-1248-5

R.T.: 6.458 min  
Delta R.T.: 0.000 min  
Response: 8485485  
Conc: 104.16 ng/ml



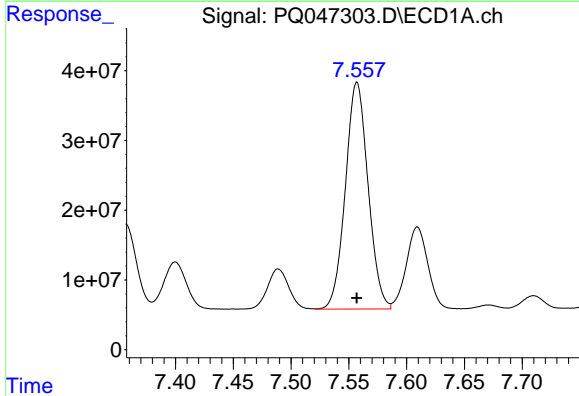
#26 AR-1254-1

R.T.: 7.329 min  
Delta R.T.: 0.000 min  
Response: 293973250  
Conc: 467.23 ng/ml



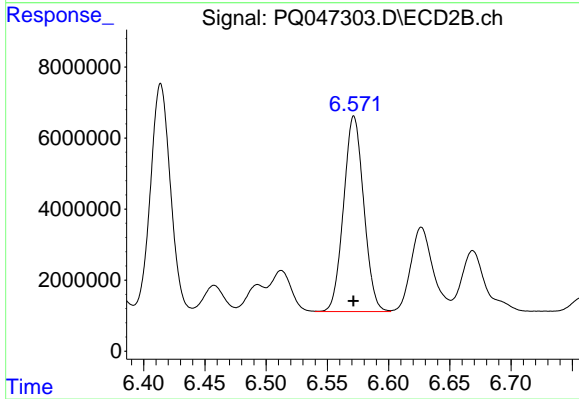
#26 AR-1254-1

R.T.: 6.414 min  
Delta R.T.: 0.000 min  
Response: 72707747  
Conc: 479.59 ng/ml



#27 AR-1254-2

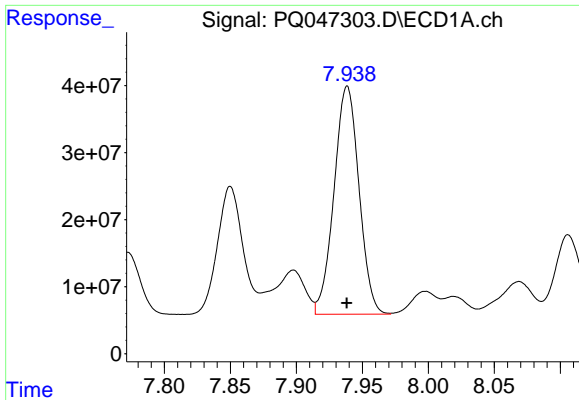
R.T.: 7.557 min  
Delta R.T.: 0.000 min  
Response: 444257808  
Conc: 472.60 ng/ml



#27 AR-1254-2

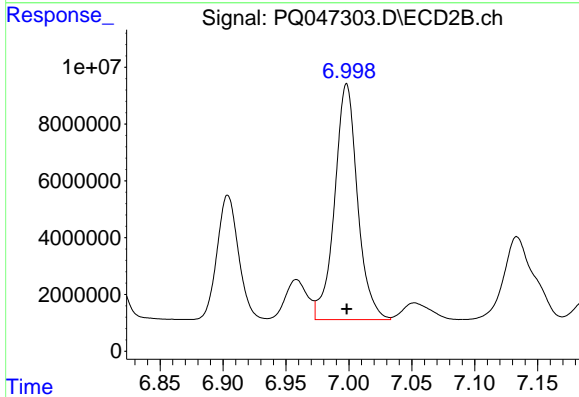
R.T.: 6.572 min  
Delta R.T.: 0.000 min  
Response: 63122543  
Conc: 480.42 ng/ml





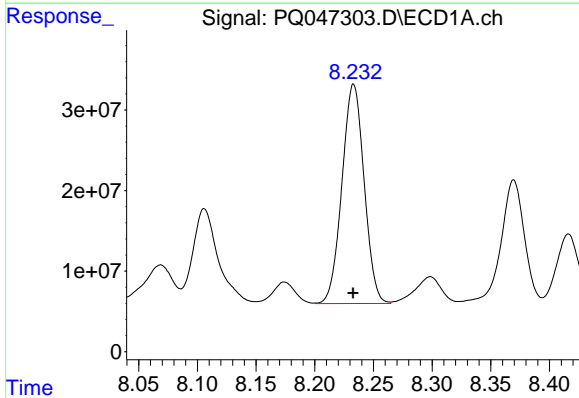
#28 AR-1254-3

R.T.: 7.939 min  
Delta R.T.: 0.000 min  
Response: 448079674  
Conc: 476.27 ng/ml



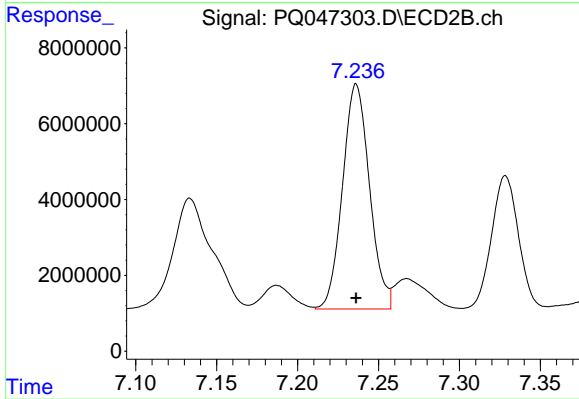
#28 AR-1254-3

R.T.: 6.998 min  
Delta R.T.: 0.000 min  
Response: 105341464  
Conc: 485.77 ng/ml



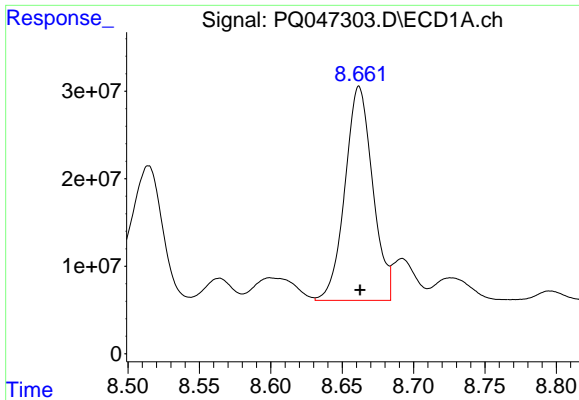
#29 AR-1254-4

R.T.: 8.233 min  
Delta R.T.: 0.000 min  
Response: 357846628  
Conc: 475.12 ng/ml



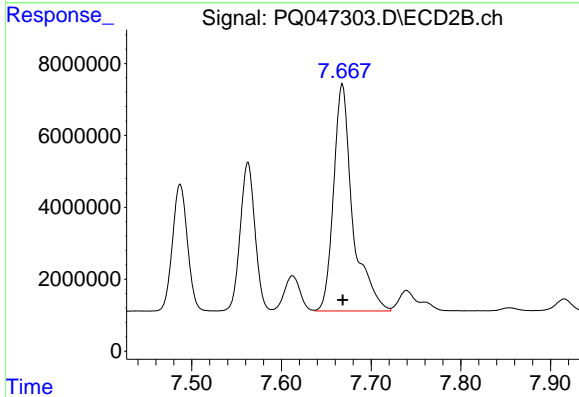
#29 AR-1254-4

R.T.: 7.236 min  
Delta R.T.: 0.000 min  
Response: 68838328  
Conc: 484.13 ng/ml



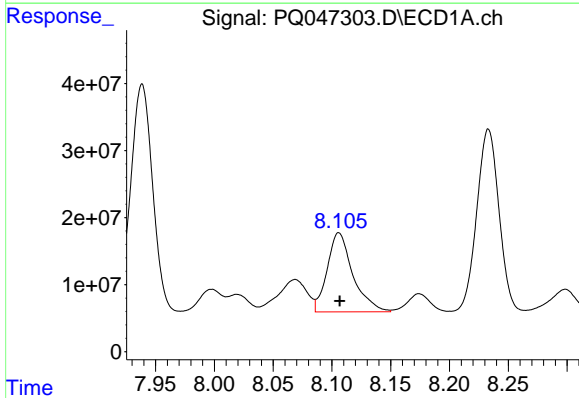
#30 AR-1254-5

R.T.: 8.662 min  
Delta R.T.: 0.000 min  
Response: 329588826  
Conc: 481.15 ng/ml



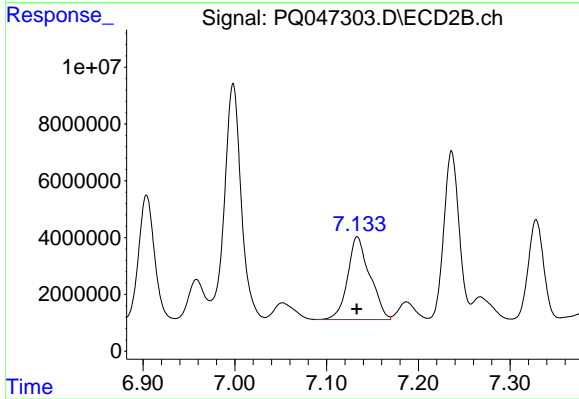
#30 AR-1254-5

R.T.: 7.668 min  
Delta R.T.: 0.000 min  
Response: 93569946  
Conc: 489.55 ng/ml



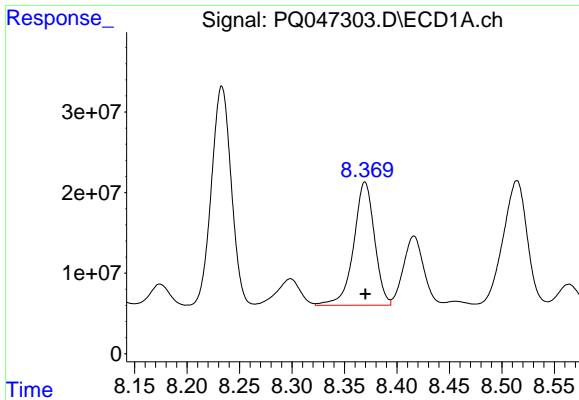
#31 AR-1260-1

R.T.: 8.106 min  
Delta R.T.: 0.000 min  
Response: 179341449  
Conc: 301.19 ng/ml

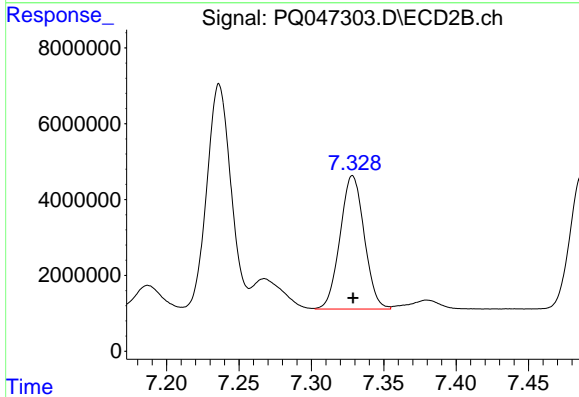


#31 AR-1260-1

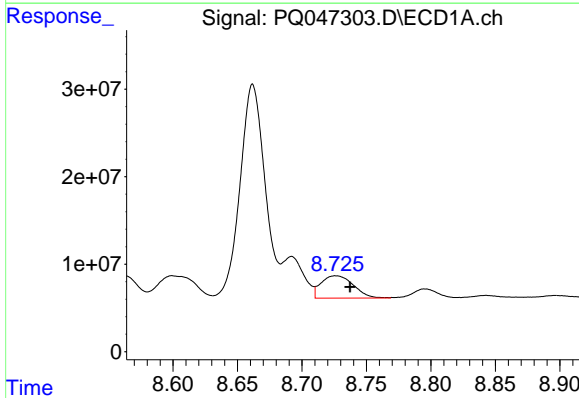
R.T.: 7.133 min  
Delta R.T.: 0.000 min  
Response: 49021588  
Conc: 393.71 ng/ml



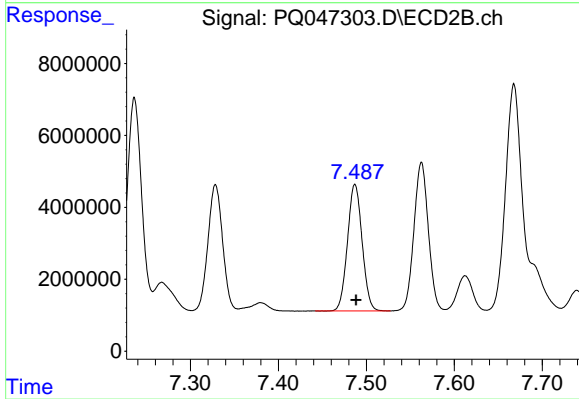
#32 AR-1260-2  
 R.T.: 8.370 min  
 Delta R.T.: 0.000 min  
 Response: 211434429  
 Conc: 284.68 ng/ml



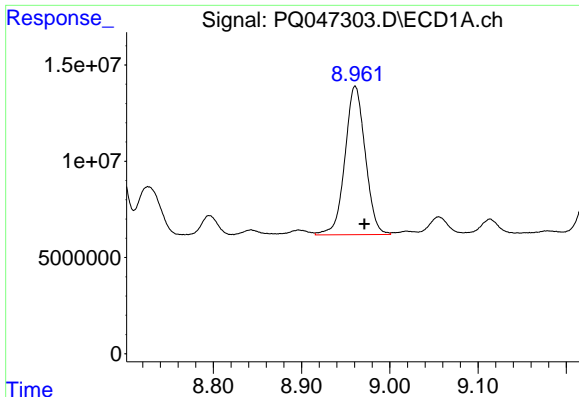
#32 AR-1260-2  
 R.T.: 7.328 min  
 Delta R.T.: 0.000 min  
 Response: 40873916  
 Conc: 262.84 ng/ml



#33 AR-1260-3  
 R.T.: 8.726 min  
 Delta R.T.: -0.011 min  
 Response: 44775372  
 Conc: 78.24 ng/ml

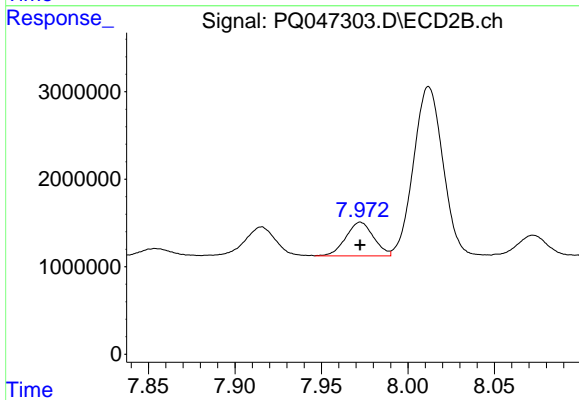


#33 AR-1260-3  
 R.T.: 7.487 min  
 Delta R.T.: -0.001 min  
 Response: 40772795  
 Conc: 286.78 ng/ml



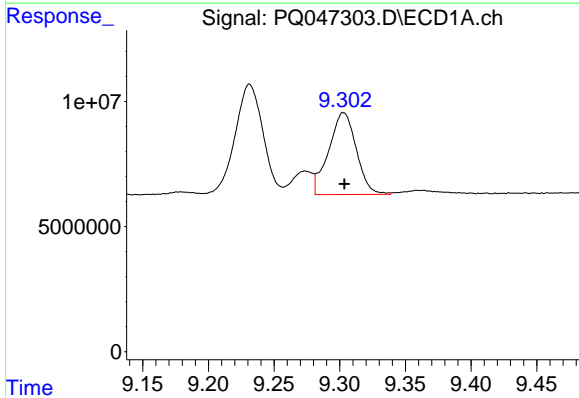
#34 AR-1260-4

R.T.: 8.961 min  
Delta R.T.: -0.011 min  
Response: 123161374  
Conc: 224.99 ng/ml



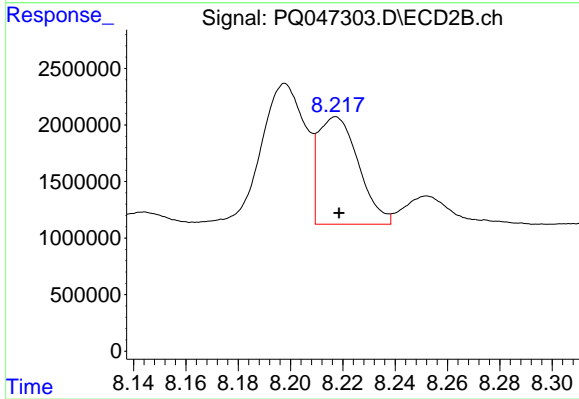
#34 AR-1260-4

R.T.: 7.973 min  
Delta R.T.: 0.000 min  
Response: 4304138  
Conc: 35.40 ng/ml



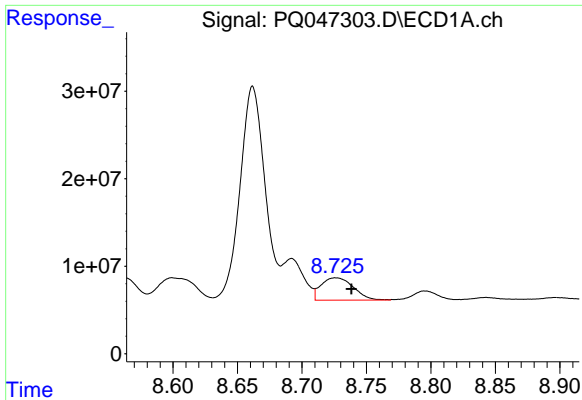
#35 AR-1260-5

R.T.: 9.303 min  
Delta R.T.: 0.000 min  
Response: 47954502  
Conc: 42.09 ng/ml



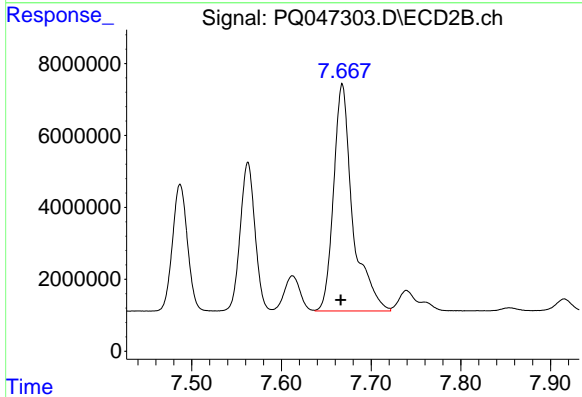
#35 AR-1260-5

R.T.: 8.217 min  
Delta R.T.: -0.001 min  
Response: 10162163  
Conc: 33.05 ng/ml



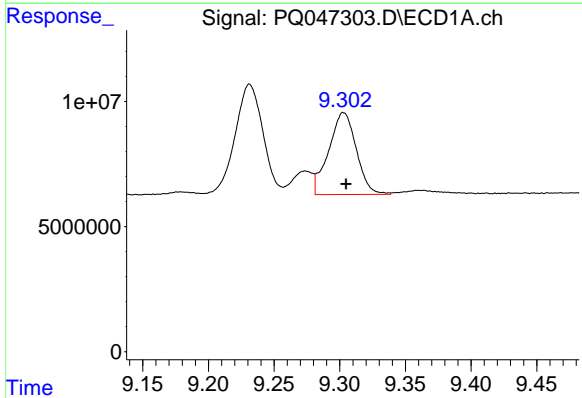
#36 AR-1262-1

R.T.: 8.726 min  
 Delta R.T.: -0.012 min  
 Response: 44775372  
 Conc: 56.05 ng/ml



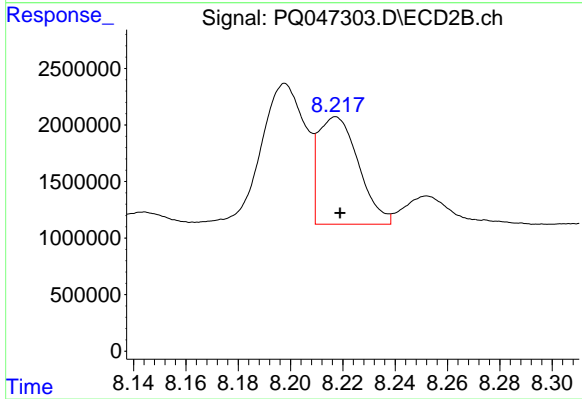
#36 AR-1262-1

R.T.: 7.668 min  
 Delta R.T.: 0.002 min  
 Response: 93569946  
 Conc: 1081.65 ng/ml



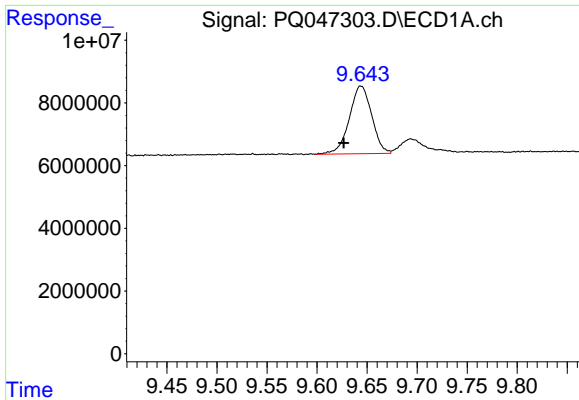
#37 AR-1262-2

R.T.: 9.303 min  
 Delta R.T.: -0.002 min  
 Response: 47954502  
 Conc: 38.89 ng/ml



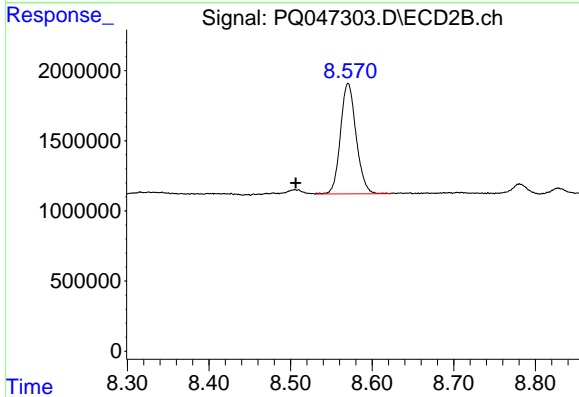
#37 AR-1262-2

R.T.: 8.217 min  
 Delta R.T.: -0.002 min  
 Response: 10162163  
 Conc: 31.40 ng/ml



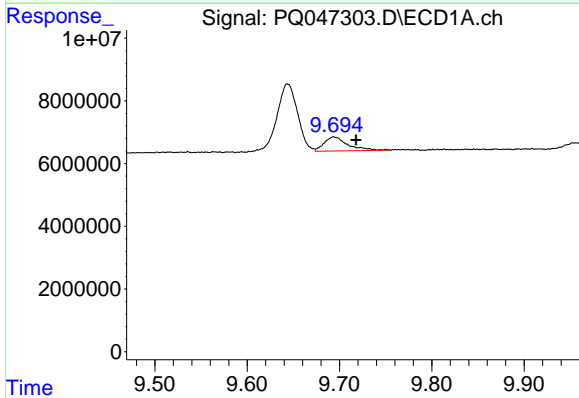
#38 AR-1262-3

R.T.: 9.644 min  
Delta R.T.: 0.017 min  
Response: 33666185  
Conc: 42.12 ng/ml



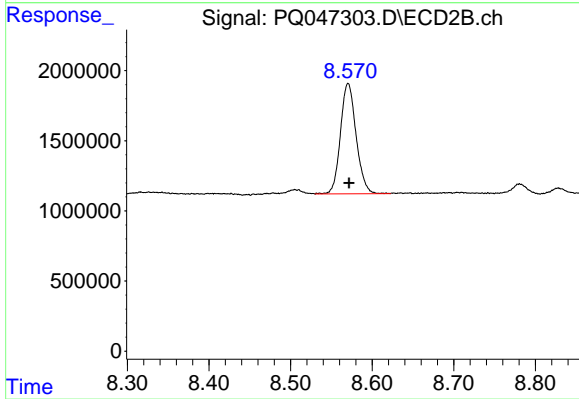
#38 AR-1262-3

R.T.: 8.571 min  
Delta R.T.: 0.064 min  
Response: 10496033  
Conc: 84.16 ng/ml



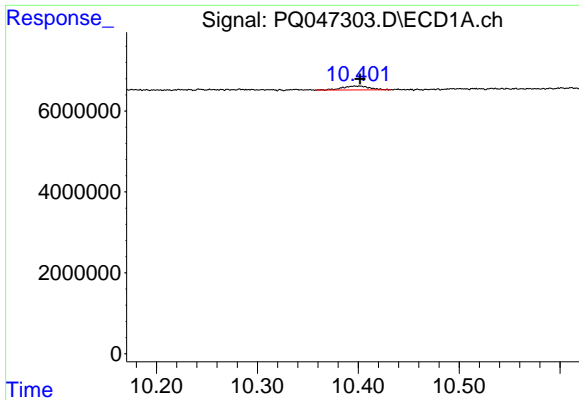
#39 AR-1262-4

R.T.: 9.694 min  
Delta R.T.: -0.024 min  
Response: 7960673  
Conc: 13.29 ng/ml



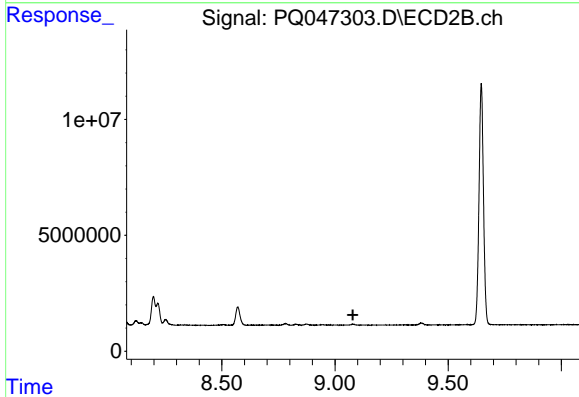
#39 AR-1262-4

R.T.: 8.571 min  
Delta R.T.: -0.001 min  
Response: 10496033  
Conc: 44.46 ng/ml



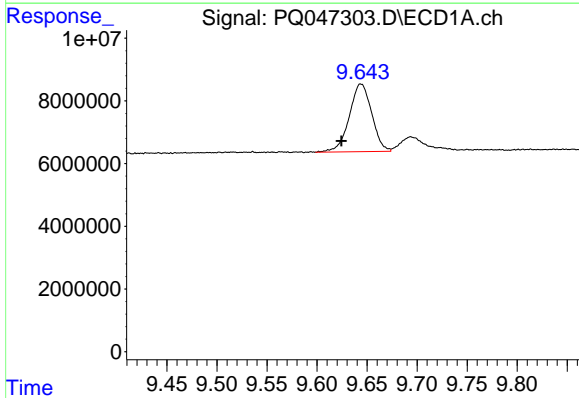
#40 AR-1262-5

R.T.: 10.397 min  
 Delta R.T.: -0.004 min  
 Response: 1862099  
 Conc: 4.67 ng/ml



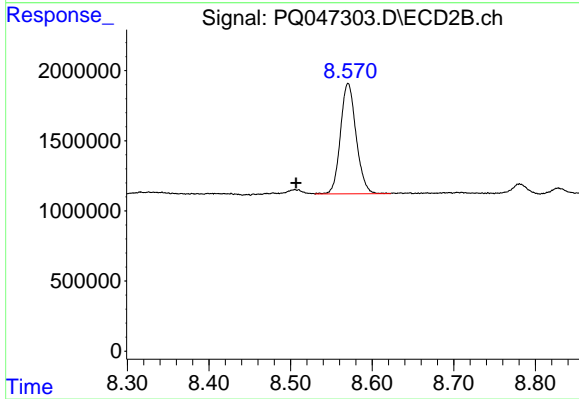
#40 AR-1262-5

R.T.: 0.000 min  
 Exp R.T. : 9.079 min  
 Response: 0  
 Conc: N.D.



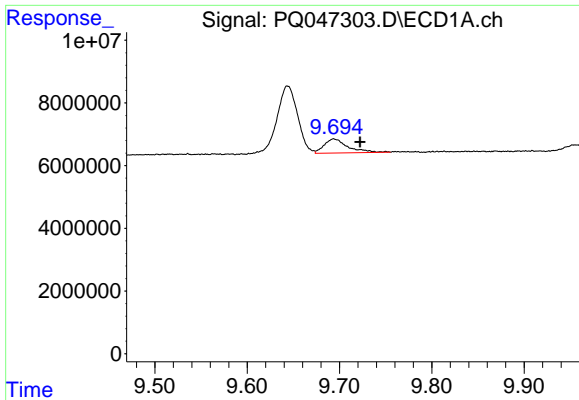
#41 AR-1268-1

R.T.: 9.644 min  
 Delta R.T.: 0.019 min  
 Response: 33666185  
 Conc: 22.39 ng/ml



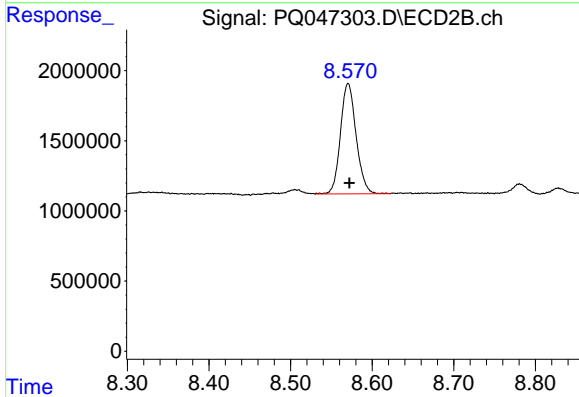
#41 AR-1268-1

R.T.: 8.571 min  
 Delta R.T.: 0.064 min  
 Response: 10496033  
 Conc: 26.50 ng/ml



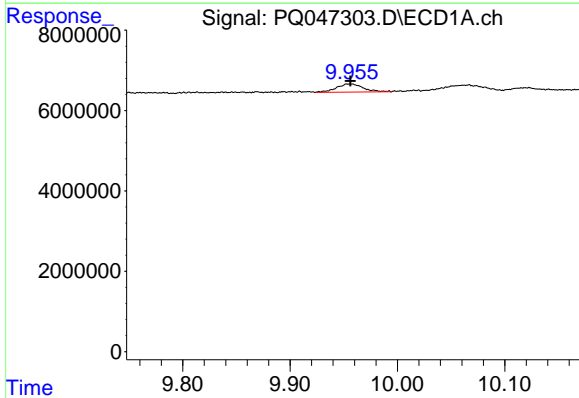
#42 AR-1268-2

R.T.: 9.694 min  
 Delta R.T.: -0.029 min  
 Response: 7960673  
 Conc: 6.13 ng/ml



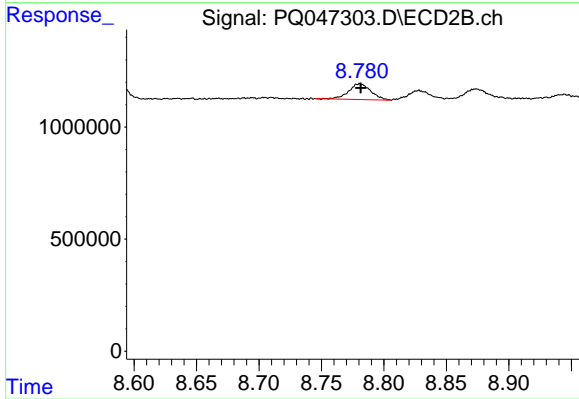
#42 AR-1268-2

R.T.: 8.571 min  
 Delta R.T.: -0.002 min  
 Response: 10496033  
 Conc: 28.60 ng/ml



#43 AR-1268-3

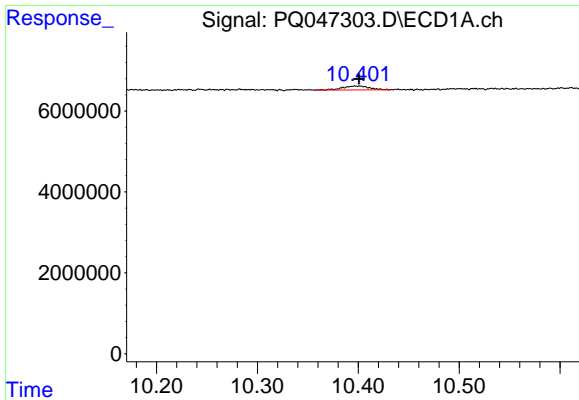
R.T.: 9.956 min  
 Delta R.T.: 0.000 min  
 Response: 3500508  
 Conc: 3.22 ng/ml



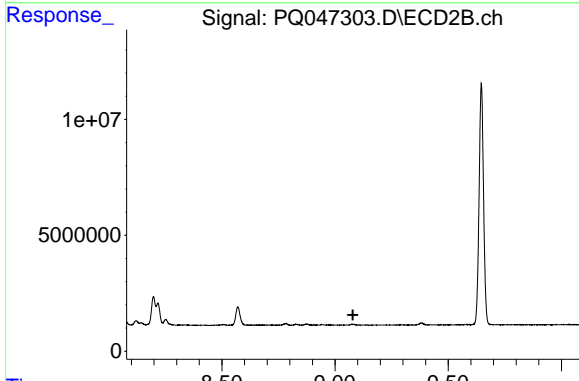
#43 AR-1268-3

R.T.: 8.780 min  
 Delta R.T.: -0.001 min  
 Response: 860378  
 Conc: 2.85 ng/ml

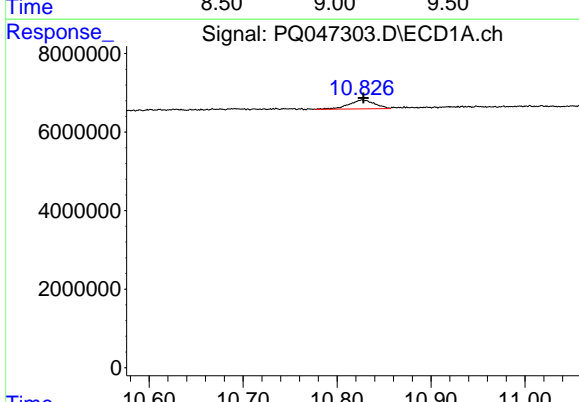




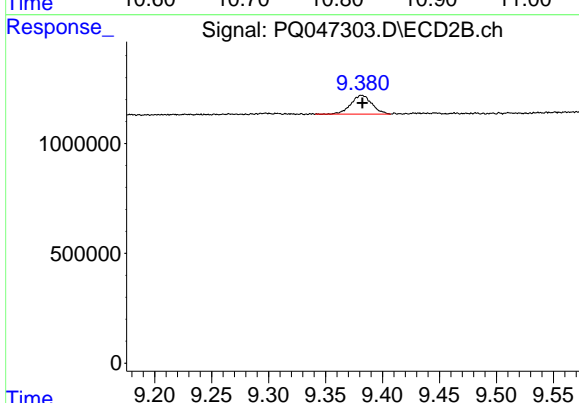
#44 AR-1268-4  
 R.T.: 10.397 min  
 Delta R.T.: -0.004 min  
 Response: 1862099  
 Conc: 3.94 ng/ml



#44 AR-1268-4  
 R.T.: 0.000 min  
 Exp R.T.: 9.079 min  
 Response: 0  
 Conc: N.D.



#45 AR-1268-5  
 R.T.: 10.827 min  
 Delta R.T.: 0.000 min  
 Response: 4235393  
 Conc: 1.42 ng/ml



#45 AR-1268-5  
 R.T.: 9.382 min  
 Delta R.T.: 0.000 min  
 Response: 1095528  
 Conc: 1.09 ng/ml