

Data Path : Z:\pestpcbsrv\HPCHEM1\ECD\_Q\Data\PQ040723\  
 Data File : PQ060858.D  
 Signal(s) : Signal #1: ECD1A.ch Signal #2: ECD2B.ch  
 Acq On : 07 Apr 2023 20:12  
 Operator : YP\AJ  
 Sample : AR1660CCC500  
 Misc :  
 ALS Vial : 3 Sample Multiplier: 1

**Instrument :**  
 ECD\_Q  
**ClientSampleId :**  
 AR1660CCC500

Integration File signal 1: autoint1.e  
 Integration File signal 2: autoint2.e  
 Quant Time: Apr 08 02:02:24 2023  
 Quant Method : Z:\pestpcbsrv\HPCHEM1\ECD\_Q\Method\PQ032723.M  
 Quant Title : GC EXTRACTABLES  
 QLast Update : Mon Mar 27 17:20:15 2023  
 Response via : Initial Calibration  
 Integrator: ChemStation

Volume Inj. : 2 µl  
 Signal #1 Phase : ZB-MR1 Signal #2 Phase: ZB-MR2  
 Signal #1 Info : 30Mx0.32mmx 0.50µ Signal #2 Info : 30M x 0.32mm x 0.25µm

Compound	RT#1	RT#2	Resp#1	Resp#2	ng/ml	ng/ml
-----						
System Monitoring Compounds						
1) SA Tetrachlo...	3.406	2.763	380.6E6	179.8E6	48.485	45.751
2) SA Decachlor...	8.585	7.540	283.8E6	207.2E6	50.283	43.968
Target Compounds						
3) L1 AR-1016-1	4.506	3.767	136.6E6	68291038	491.067	477.051
4) L1 AR-1016-2	4.525	3.783	206.8E6	98430181	497.634	467.597
5) L1 AR-1016-3	4.582	3.943	129.6E6	52255161	496.711	471.248
6) L1 AR-1016-4	4.674	3.992	108.8E6	43329071	502.925	459.982
7) L1 AR-1016-5	4.962	4.187	106.8E6	54906600	479.850	465.793
31) L7 AR-1260-1	6.063	5.181	195.6E6	108.2E6	508.823	466.952
32) L7 AR-1260-2	6.323	5.372	235.9E6	134.9E6	515.157	470.676
33) L7 AR-1260-3	6.677	5.512	174.1E6	124.9E6	601.251	458.088
34) L7 AR-1260-4	6.894	5.975	195.5E6	105.9E6	567.639	523.839
35) L7 AR-1260-5	7.205	6.221	380.1E6	242.8E6	581.593	524.722

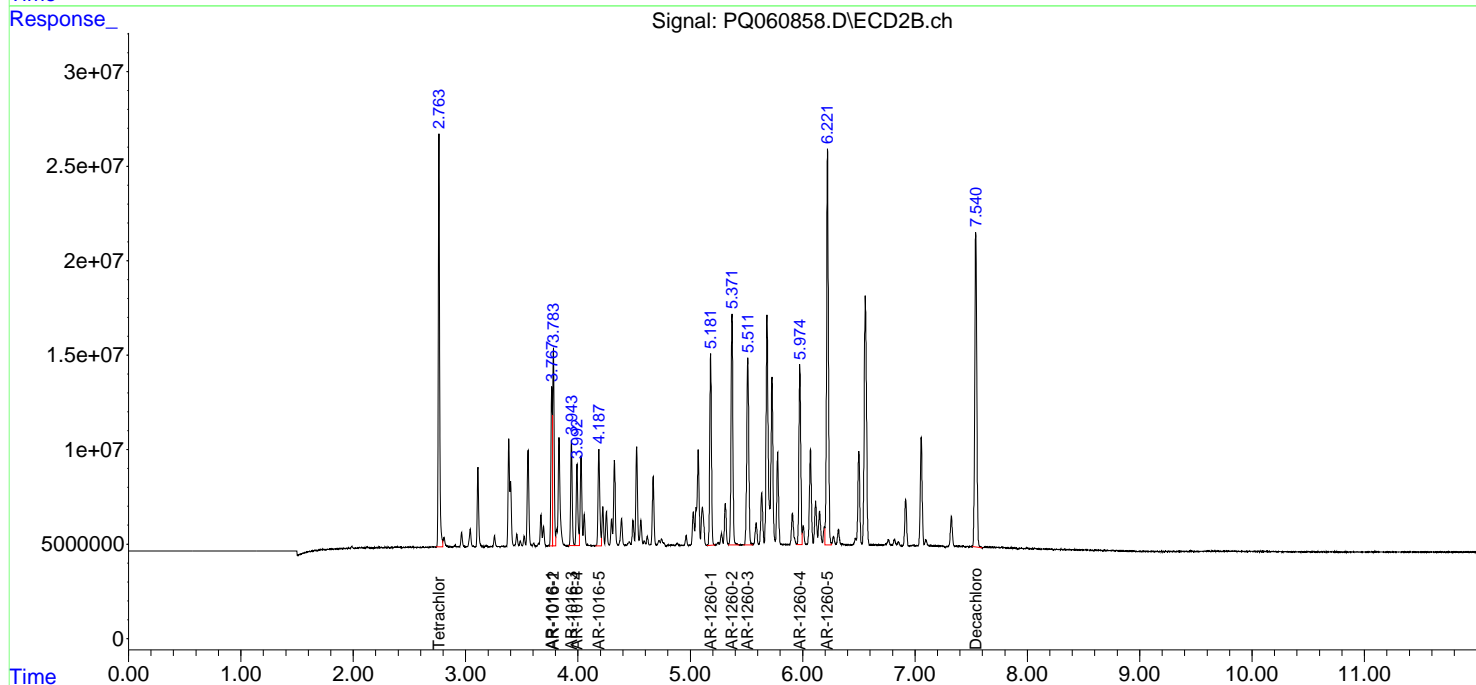
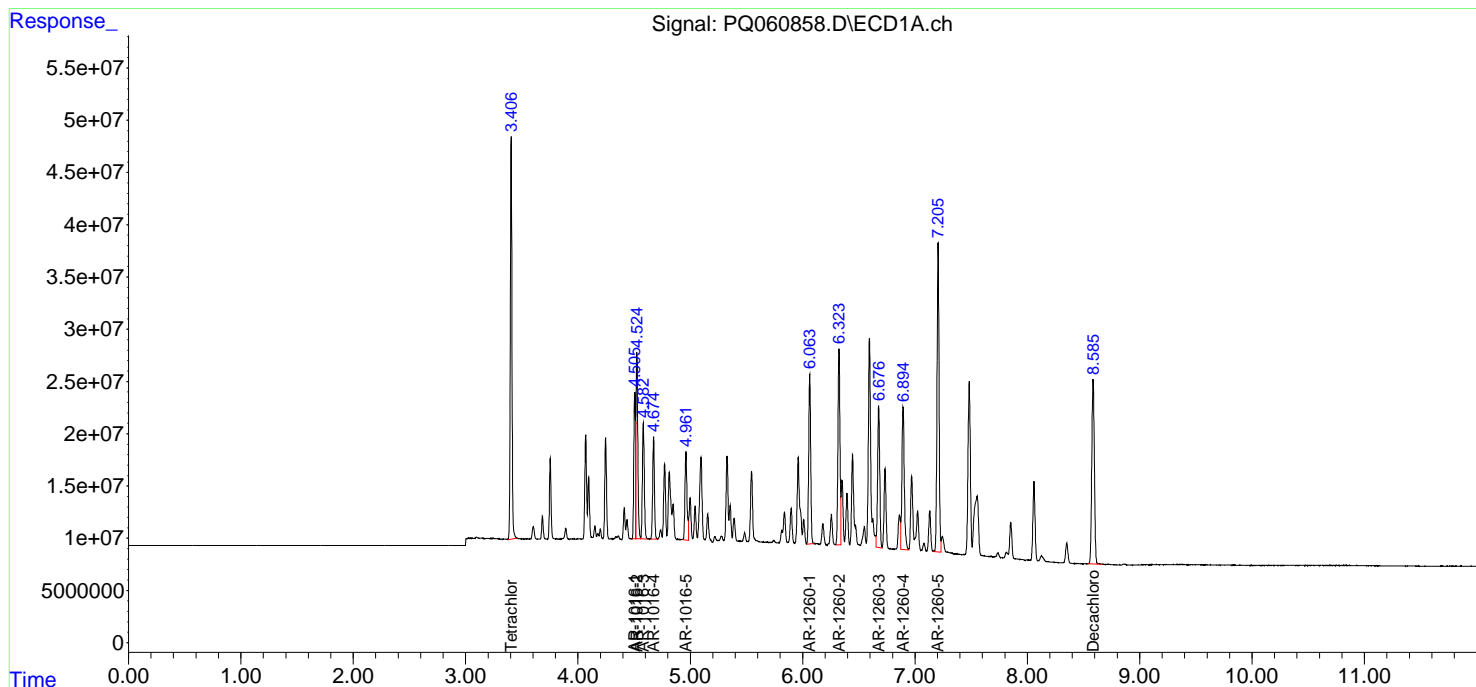
(f)=RT Delta > 1/2 Window (#)=Amounts differ by > 25% (m)=manual int.

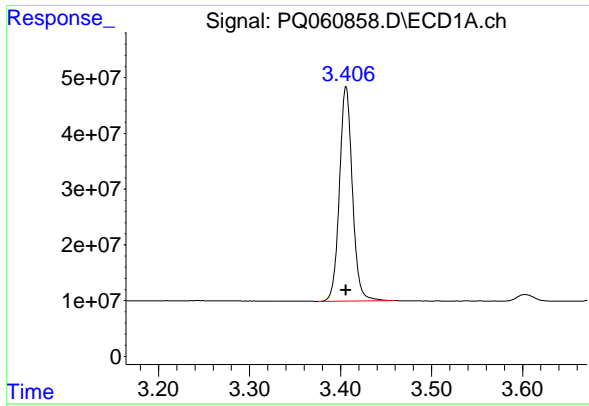
Data Path : Z:\pestpcbsrv\HPCHEM1\ECD\_Q\Data\PQ040723\  
 Data File : PQ060858.D  
 Signal(s) : Signal #1: ECD1A.ch Signal #2: ECD2B.ch  
 Acq On : 07 Apr 2023 20:12  
 Operator : YP\AJ  
 Sample : AR1660CCC500  
 Misc :  
 ALS Vial : 3 Sample Multiplier: 1

Instrument :  
 ECD\_Q  
 ClientSampleId :  
 AR1660CCC500

Integration File signal 1: autoint1.e  
 Integration File signal 2: autoint2.e  
 Quant Time: Apr 08 02:02:24 2023  
 Quant Method : Z:\pestpcbsrv\HPCHEM1\ECD\_Q\Method\PQ032723.M  
 Quant Title : GC EXTRACTABLES  
 QLast Update : Mon Mar 27 17:20:15 2023  
 Response via : Initial Calibration  
 Integrator: ChemStation

Volume Inj. : 2 µl  
 Signal #1 Phase : ZB-MR1 Signal #2 Phase: ZB-MR2  
 Signal #1 Info : 30Mx0.32mmx 0.50µm Signal #2 Info : 30M x 0.32mm x 0.25µm

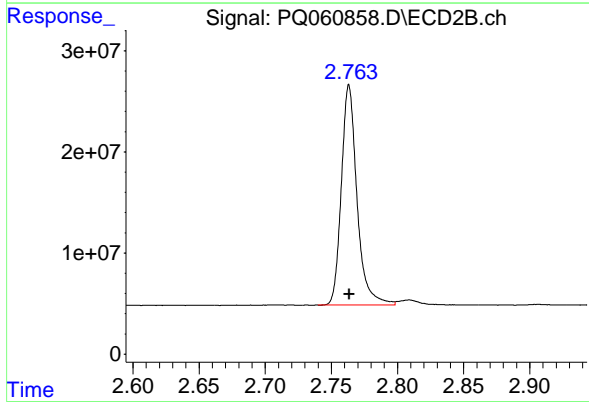




#1 Tetrachloro-m-xylene

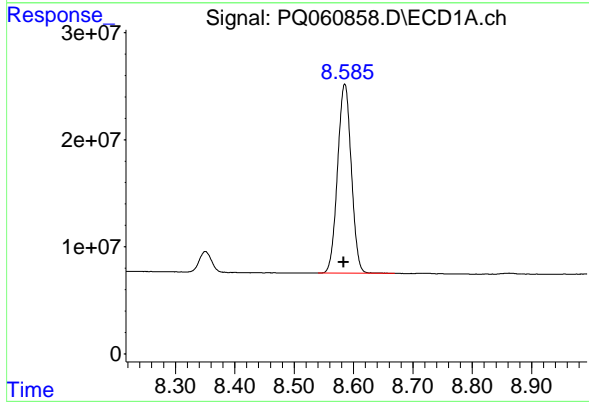
R.T.: 3.406 min  
 Delta R.T.: 0.000 min  
 Response: 380612466  
 Conc: 48.48 ng/ml

Instrument :  
 ECD\_Q  
 ClientSampleId :  
 AR1660CCC500



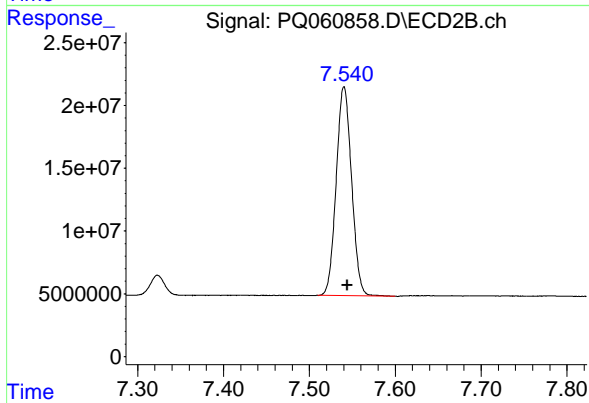
#1 Tetrachloro-m-xylene

R.T.: 2.763 min  
 Delta R.T.: 0.000 min  
 Response: 179826863  
 Conc: 45.75 ng/ml



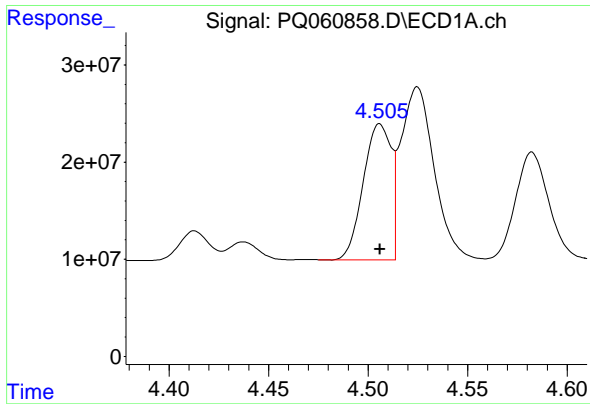
#2 Decachlorobiphenyl

R.T.: 8.585 min  
 Delta R.T.: 0.002 min  
 Response: 283754675  
 Conc: 50.28 ng/ml



#2 Decachlorobiphenyl

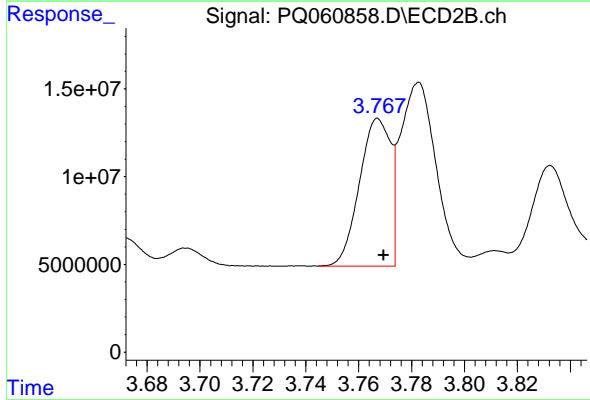
R.T.: 7.540 min  
 Delta R.T.: -0.004 min  
 Response: 207216475  
 Conc: 43.97 ng/ml



#3 AR-1016-1

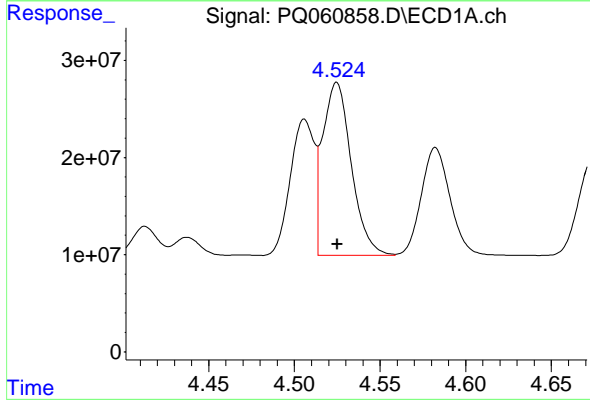
R.T.: 4.506 min  
 Delta R.T.: 0.000 min  
 Response: 136637792  
 Conc: 491.07 ng/ml

Instrument :  
 ECD\_Q  
 ClientSampleId :  
 AR1660CCC500



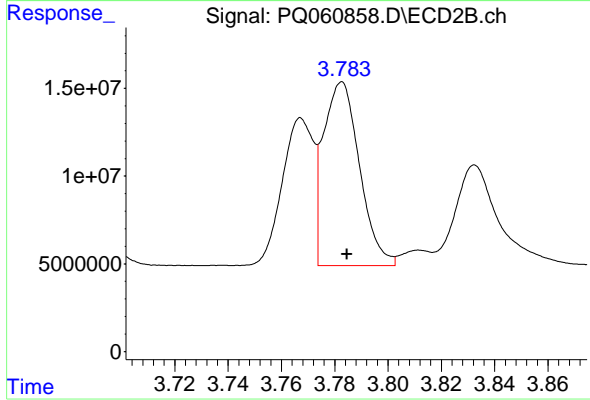
#3 AR-1016-1

R.T.: 3.767 min  
 Delta R.T.: -0.002 min  
 Response: 68291038  
 Conc: 477.05 ng/ml



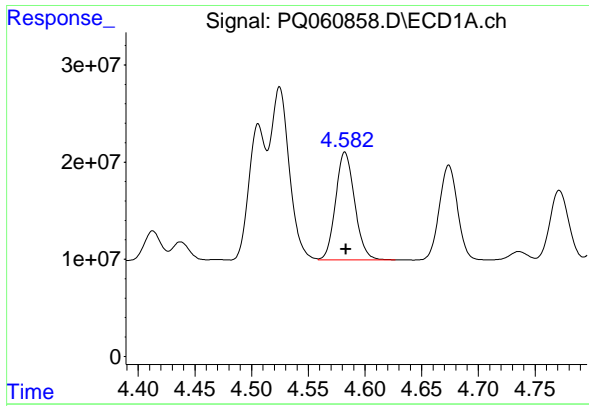
#4 AR-1016-2

R.T.: 4.525 min  
 Delta R.T.: 0.000 min  
 Response: 206815508  
 Conc: 497.63 ng/ml



#4 AR-1016-2

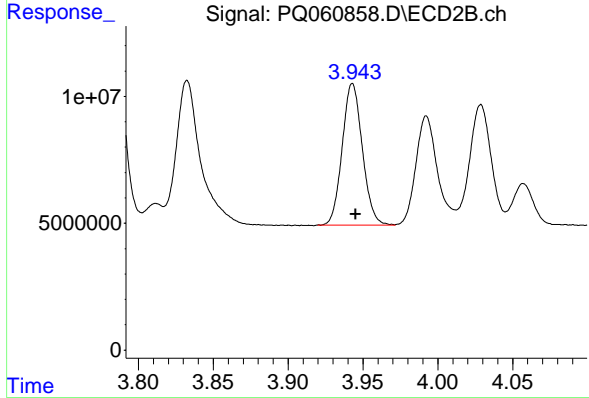
R.T.: 3.783 min  
 Delta R.T.: -0.002 min  
 Response: 98430181  
 Conc: 467.60 ng/ml



#5 AR-1016-3

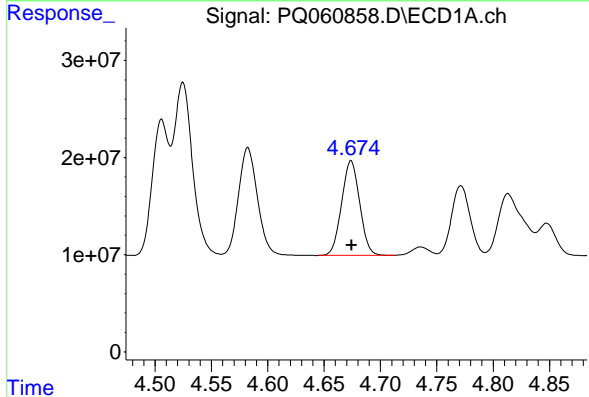
R.T.: 4.582 min  
 Delta R.T.: 0.000 min  
 Response: 129569785  
 Conc: 496.71 ng/ml

Instrument :  
 ECD\_Q  
 ClientSampleId :  
 AR1660CCC500



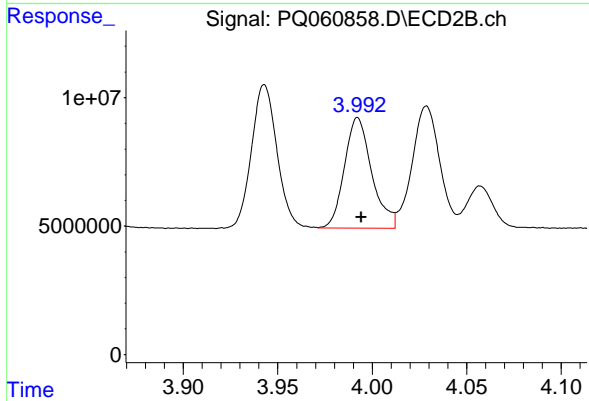
#5 AR-1016-3

R.T.: 3.943 min  
 Delta R.T.: -0.002 min  
 Response: 52255161  
 Conc: 471.25 ng/ml



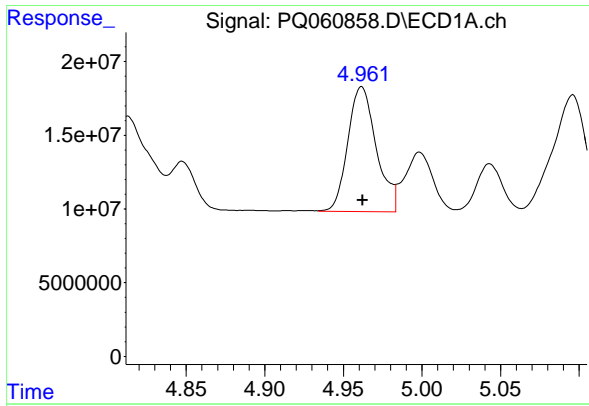
#6 AR-1016-4

R.T.: 4.674 min  
 Delta R.T.: 0.000 min  
 Response: 108769174  
 Conc: 502.92 ng/ml



#6 AR-1016-4

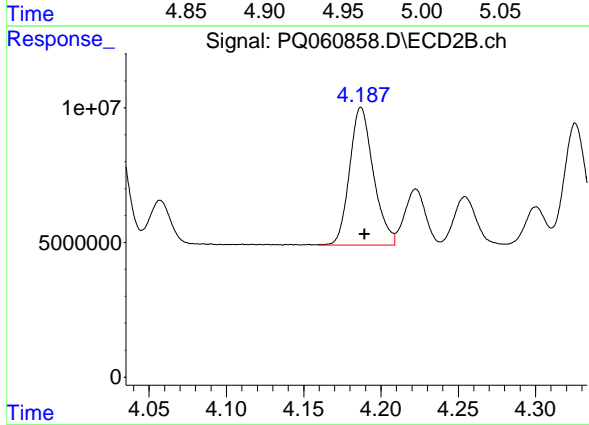
R.T.: 3.992 min  
 Delta R.T.: -0.002 min  
 Response: 43329071  
 Conc: 459.98 ng/ml



#7 AR-1016-5

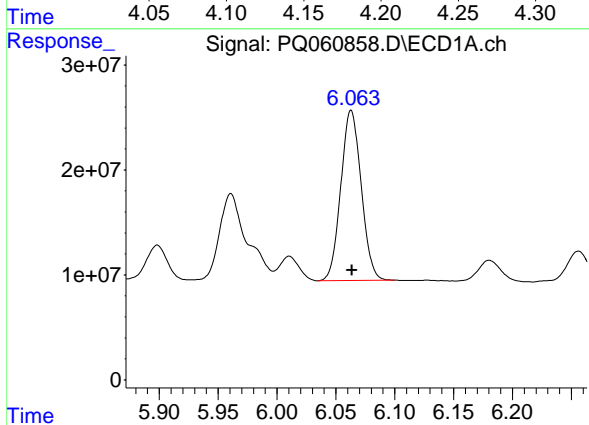
R.T.: 4.962 min  
 Delta R.T.: 0.000 min  
 Response: 106793259  
 Conc: 479.85 ng/ml

Instrument :  
 ECD\_Q  
 ClientSampleId :  
 AR1660CCC500



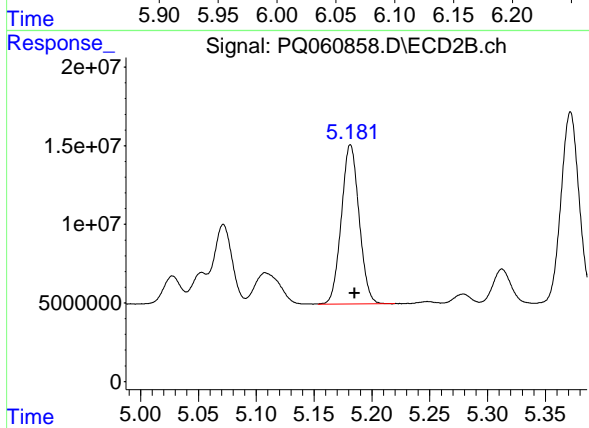
#7 AR-1016-5

R.T.: 4.187 min  
 Delta R.T.: -0.002 min  
 Response: 54906600  
 Conc: 465.79 ng/ml



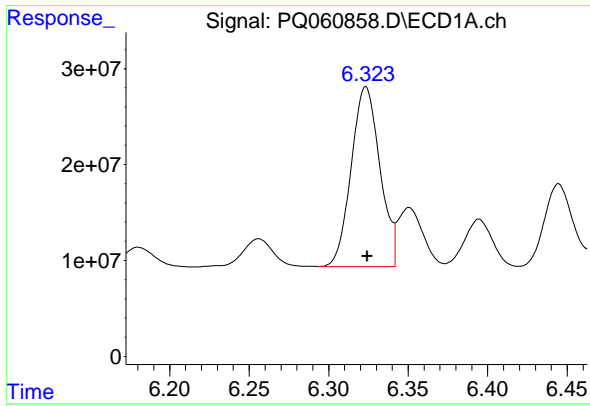
#31 AR-1260-1

R.T.: 6.063 min  
 Delta R.T.: 0.000 min  
 Response: 195625993  
 Conc: 508.82 ng/ml



#31 AR-1260-1

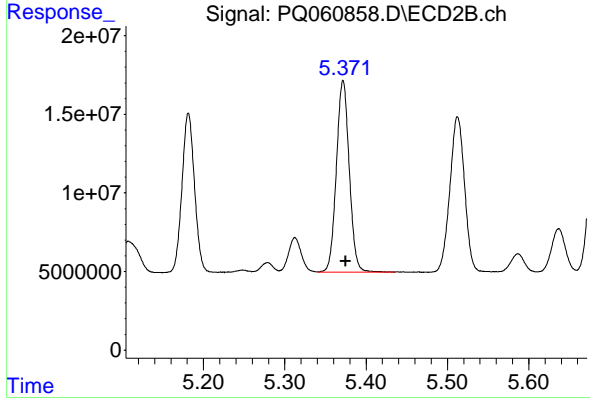
R.T.: 5.181 min  
 Delta R.T.: -0.003 min  
 Response: 108175631  
 Conc: 466.95 ng/ml



#32 AR-1260-2

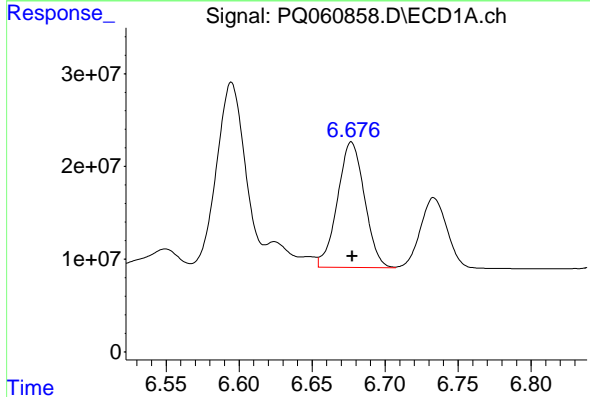
R.T.: 6.323 min  
 Delta R.T.: 0.000 min  
 Response: 235944145  
 Conc: 515.16 ng/ml

Instrument :  
 ECD\_Q  
 ClientSampleId :  
 AR1660CCC500



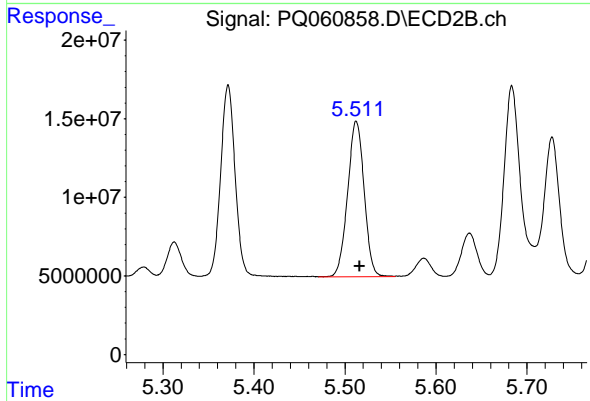
#32 AR-1260-2

R.T.: 5.372 min  
 Delta R.T.: -0.003 min  
 Response: 134883863  
 Conc: 470.68 ng/ml



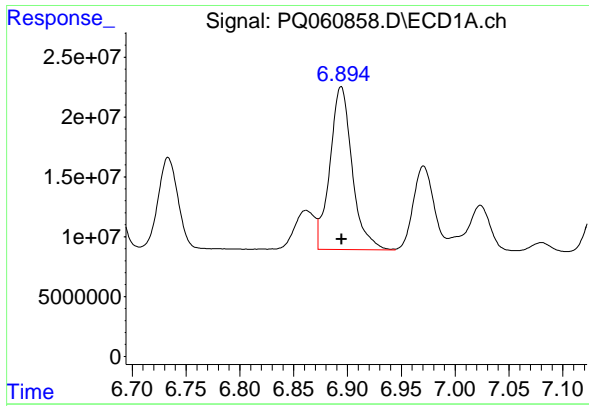
#33 AR-1260-3

R.T.: 6.677 min  
 Delta R.T.: 0.000 min  
 Response: 174071808  
 Conc: 601.25 ng/ml



#33 AR-1260-3

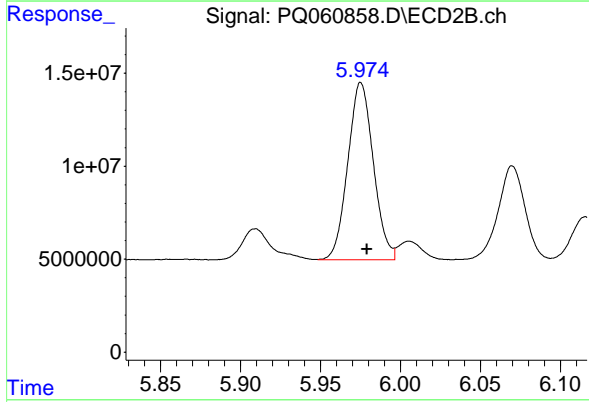
R.T.: 5.512 min  
 Delta R.T.: -0.004 min  
 Response: 124864866  
 Conc: 458.09 ng/ml



#34 AR-1260-4

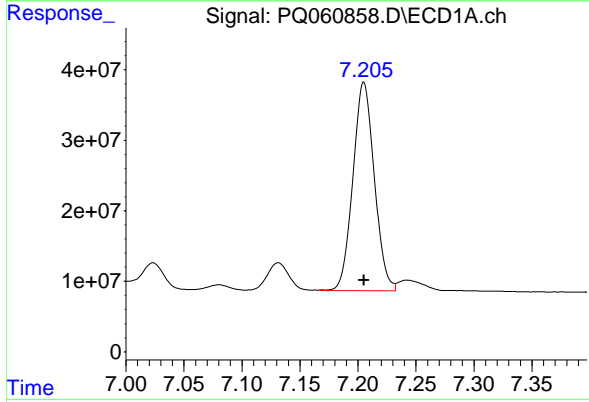
R.T.: 6.894 min  
 Delta R.T.: 0.000 min  
 Response: 195463354  
 Conc: 567.64 ng/ml

Instrument :  
 ECD\_Q  
 ClientSampleId :  
 AR1660CCC500



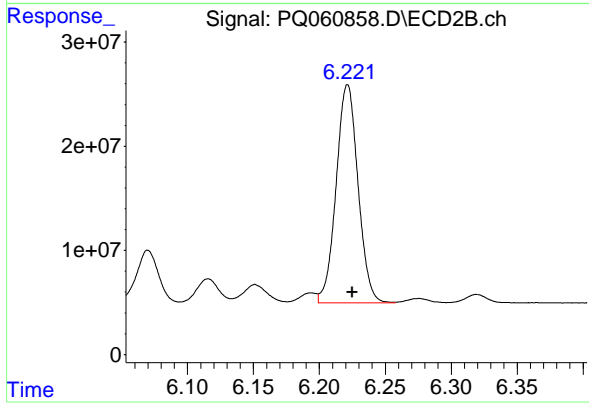
#34 AR-1260-4

R.T.: 5.975 min  
 Delta R.T.: -0.004 min  
 Response: 105930232  
 Conc: 523.84 ng/ml



#35 AR-1260-5

R.T.: 7.205 min  
 Delta R.T.: 0.000 min  
 Response: 380109690  
 Conc: 581.59 ng/ml



#35 AR-1260-5

R.T.: 6.221 min  
 Delta R.T.: -0.004 min  
 Response: 242811189  
 Conc: 524.72 ng/ml