

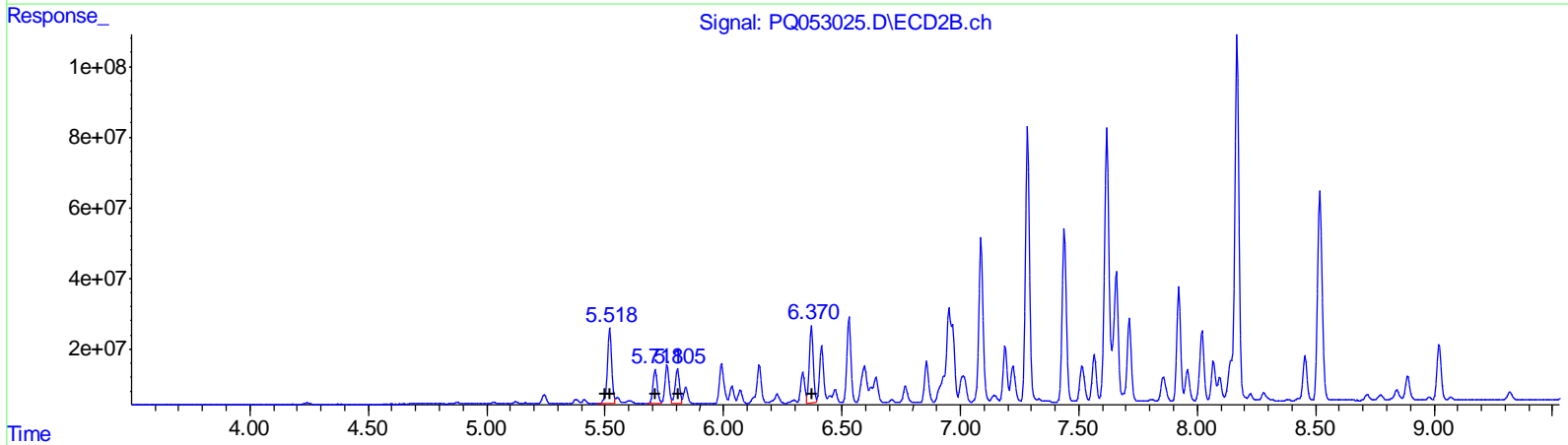
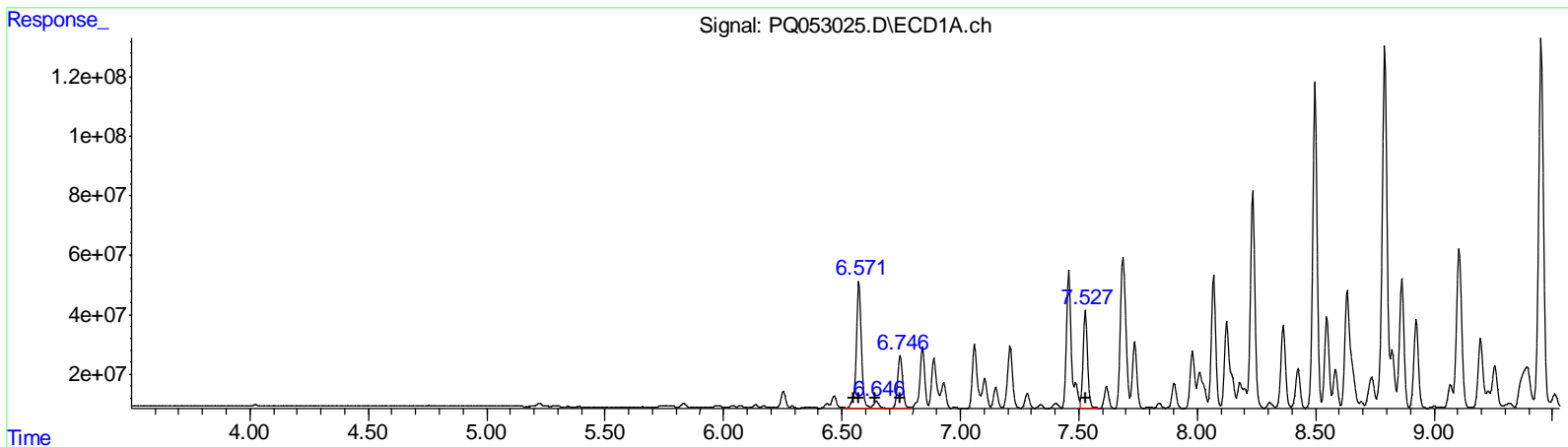
Data Path : Z:\pestpcbsrv\HPCHEM1\ECD_Q\Data\PQ040821\
 Data File : PQ053025.D
 Signal(s) : Signal #1: ECD1A.ch Signal #2: ECD2B.ch
 Acq On : 08 Apr 2021 18:13
 Operator : DD\AJ
 Sample : M1959-06DL2 40X
 Misc :
 ALS Vial : 31 Sample Multiplier: 1

Instrument :
 ECD_Q
Client Sampled :
 C0B55DL2

Manual Integrations
APPROVED
 Ankita
 4/9/2021 3:34:43 PM

Integration File signal 1: autoint1.e
 Integration File signal 2: autoint2.e
 Quant Time: Apr 09 04:50:45 2021
 Quant Method : Z:\pestpcbsrv\HPCHEM1\ECD_Q\Method\PQ031721CLP.M
 Quant Title : GC EXTRACTABLES
 QLast Update : Thu Mar 18 06:24:02 2021
 Response via : Initial Calibration
 Integrator: ChemStation

Volume Inj. : 1 µl
 Signal #1 Phase : ZB MR1 Signal #2 Phase: ZB MR2
 Signal #1 Info : 30Mx0.32mmx 0.5µm Signal #2 Info : 30M x 0.32mm x 0.25µm



QEdit

(16) AR-1242-1 (L4)			
R.T.	Response	Conc	
6.57	618418076	775.85	
6.57	618418076	525.52	
6.65	34986762	49.52	
6.75	257053159	437.50	
7.53	434434083	648.42	
(16) AR-1242-1 #2 (L4)			
R.T.	Response	Conc	
5.52	268784745	761.01	
5.52	268784745	536.44	
5.71	119886658	461.26	
5.81	122889353	500.52	
6.37	253155149	728.65	

(+) = Expected Retention Time

Data Path : Z:\pestpcbsrv\HPCHEM1\ECD_Q\Data\PQ040821\
 Data File : PQ053025.D
 Signal(s) : Signal #1: ECD1A.ch Signal #2: ECD2B.ch
 Acq On : 08 Apr 2021 18:13
 Operator : DD\AJ
 Sample : M1959-06DL2 40X
 Misc :
 ALS Vial : 31 Sample Multiplier: 1

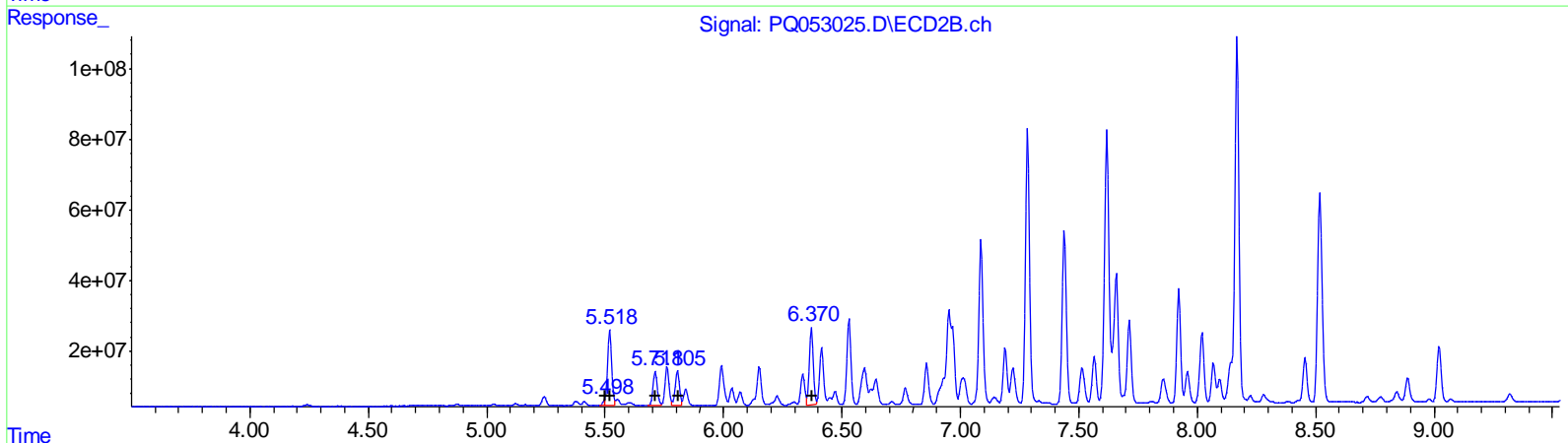
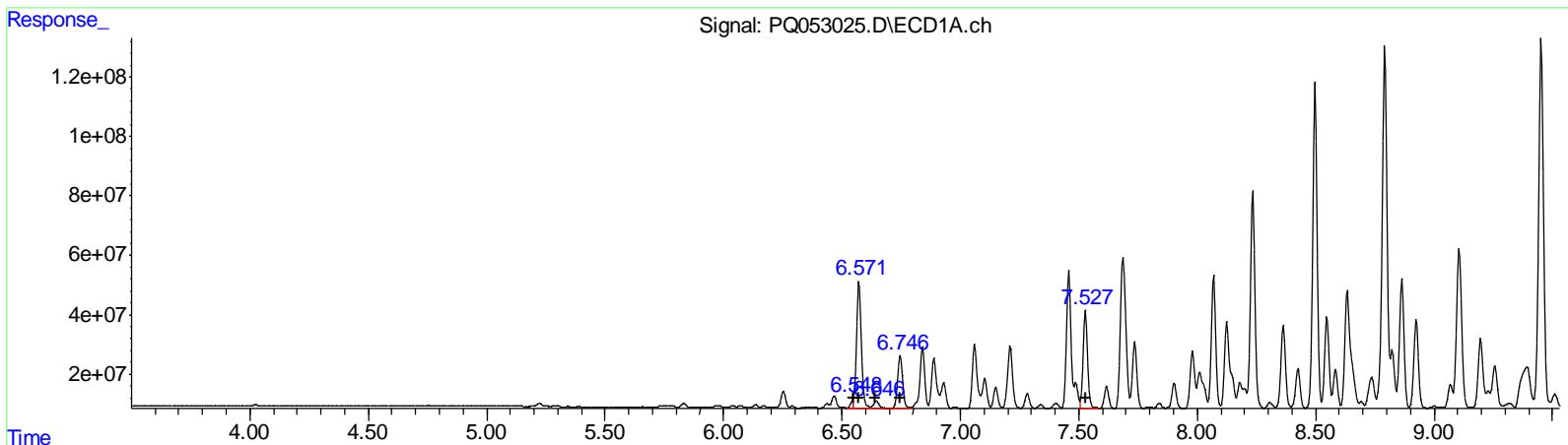
Instrument :
 ECD_Q
 Client Sampled :
 C0B55DL2

Manual Integrations
APPROVED

Ankita
 4/9/2021 3:34:43 PM

Integration File signal 1: autoint1.e
 Integration File signal 2: autoint2.e
 Quant Time: Apr 09 04:50:45 2021
 Quant Method : Z:\pestpcbsrv\HPCHEM1\ECD_Q\Method\PQ031721CLP.M
 Quant Title : GC EXTRACTABLES
 QLast Update : Thu Mar 18 06:24:02 2021
 Response via : Initial Calibration
 Integrator: ChemStation

Volume Inj. : 1 µl
 Signal #1 Phase : ZB MR1 Signal #2 Phase: ZB MR2
 Signal #1 Info : 30Mx0.32mmx 0.5µm Signal #2 Info : 30M x 0.32mm x 0.25µm



QEdit

(16) AR-1242-1 #2 (L4)

R.T.	Response	Conc
6.55	21556989	27.04
6.57	598976720	509.00
6.65	34986762	49.52
6.75	257053159	437.50
7.53	434434083	648.42

(16) AR-1242-1 #2 (L4)

R.T.	Response	Conc
5.50	9355547	26.49
5.52	260955373	520.81
5.71	119886658	461.26
5.81	122889353	500.52
6.37	253155149	728.65

(+) = Expected Retention Time

Data Path : Z:\pestpcbsrv\HPCHEM1\ECD_Q\Data\PQ040821\
 Data File : PQ053025.D
 Signal(s) : Signal #1: ECD1A.ch Signal #2: ECD2B.ch
 Acq On : 08 Apr 2021 18:13
 Operator : DD\AJ
 Sample : M1959-06DL2 40X
 Misc :
 ALS Vial : 31 Sample Multiplier: 1

Integration File signal 1: autoint1.e
 Integration File signal 2: autoint2.e
 Quant Time: Apr 09 04:50:45 2021
 Quant Method : Z:\pestpcbsrv\HPCHEM1\ECD_Q\Method\PQ031721CLP.M
 Quant Title : GC EXTRACTABLES
 QLast Update : Thu Mar 18 06:24:02 2021
 Response via : Initial Calibration
 Integrator: ChemStation

Volume Inj. : 1 µl
 Signal #1 Phase : ZB MR1 Signal #2 Phase: ZB MR2
 Signal #1 Info : 30Mx0.32mmx 0.5µm Signal #2 Info : 30M x 0.32mm x 0.25µm

Compound	RT#1	RT#2	Resp#1	Resp#2	ng/ml	ng/ml
----------	------	------	--------	--------	-------	-------

System Monitoring Compounds

Target Compounds

16)	L4	AR-1242-1	6.548	5.498	21556989	9355547	27.045m	26.488m
17)	L4	AR-1242-2	6.571	5.518	599.0E6	261.0E6	508.996m	520.815m
18)	L4	AR-1242-3	6.645	5.711	34986762	119.9E6	49.521	461.261 #
19)	L4	AR-1242-4	6.746	5.805	257.1E6	122.9E6	437.499	500.521
20)	L4	AR-1242-5	7.527	6.370	434.4E6	253.2E6	648.422	728.652
31)	L7	AR-1260-1	8.234	7.087	967.7E6	571.1E6	898.069	987.930
32)	L7	AR-1260-2	8.497	7.283	1397.1E6	919.5E6	1063.197	1152.849
33)	L7	AR-1260-3	8.864	7.438	594.8E6	601.9E6	592.465	913.164 #
34)	L7	AR-1260-4	9.105	7.922	834.5E6	364.5E6	730.197	646.437
35)	L7	AR-1260-5	9.452	8.168	1793.0E6	1370.4E6	753.702	895.494

AJ
 04/14/21

(f)=RT Delta > 1/2 Window (#)=Amounts differ by > 25% (m)=manual int.

Instrument :
 ECD_Q
 Client Sampled :
 COB55DL2

Manual Integrations
 APPROVED
 Ankitia
 4/9/2021 3:34:43 PM