

Data Path : Z:\pestpcbsrv\HPCHEM1\ECD\_Q\Data\PQ040825\  
 Data File : PQ070129.D  
 Signal(s) : Signal #1: ECD1A.ch Signal #2: ECD2B.ch  
 Acq On : 08 Apr 2025 10:20  
 Operator : YP\AJ  
 Sample : AR1660CCC400  
 Misc :  
 ALS Vial : 3 Sample Multiplier: 1

Instrument :  
 ECD\_Q  
 ClientSampleId :

Integration File signal 1: autoint1.e  
 Integration File signal 2: autoint2.e  
 Quant Time: Apr 08 10:33:28 2025  
 Quant Method : Z:\pestpcbsrv\HPCHEM1\ECD\_Q\Method\PQ031725CLP.M  
 Quant Title : GC EXTRACTABLES  
 QLast Update : Wed Mar 19 15:05:25 2025  
 Response via : Initial Calibration  
 Integrator: ChemStation

Volume Inj. : 1 µl  
 Signal #1 Phase : ZB MR1 Signal #2 Phase: ZB MR2  
 Signal #1 Info : 30Mx0.32mmx 0.5µm Signal #2 Info : 30M x 0.32mm x 0.25µm

Compound	RT#1	RT#2	Resp#1	Resp#2	ng/ml	ng/ml
-----						
System Monitoring Compounds						
1) SA Tetrachlo...	3.415	2.782	198.8E6	187.2E6	22.232	23.209
2) SA Decachlor...	8.518	7.550	135.2E6	243.8E6	35.605	41.592
Target Compounds						
3) L1 AR-1016-1	4.499	3.786	77930738	78748162	338.793	352.206
4) L1 AR-1016-2	4.499	3.801	77930738	171.2E6	201.327	469.028 #
5) L1 AR-1016-3	4.575	3.962	105.0E6	87510229	416.516	423.472
6) L1 AR-1016-4	4.664	4.009	78084742	88220990	390.905	465.048
7) L1 AR-1016-5	4.948	4.205	80912854	98224096	412.683	440.508
8) L2 AR-1221-1	3.607	2.981	11933516	12533831	120.424	129.959
9) L2 AR-1221-2	3.688	3.059	15027130	16149545	220.985	240.737
10) L2 AR-1221-3	3.756	3.128	63326040	65847960	288.629	307.851
11) L3 AR-1232-1	3.756	3.128	63326040	65847960	353.171	367.355
12) L3 AR-1232-2	4.243	3.801	94031223	171.2E6	915.428	941.266
13) L3 AR-1232-3	4.499	3.962	77930738	87510229	413.967	920.632 #
14) L3 AR-1232-4	4.664	4.047	78084742	90145683	810.797	1078.661 #
15) L3 AR-1232-5	4.761	4.205	67582254	98224096	1032.711	1046.119
16) L4 AR-1242-1	4.499	3.786	77930738	78748162	379.638	399.678
17) L4 AR-1242-2	4.499	3.801	77930738	171.2E6	232.973	555.757 #
18) L4 AR-1242-3	4.575	3.962	105.0E6	87510229	489.916	514.816
19) L4 AR-1242-4	4.664	4.047	78084742	90145683	454.225	552.560
20) L4 AR-1242-5	5.373	4.542	15226062	93818966	98.974	472.807 #
21) L5 AR-1248-1	4.499	3.786	77930738	78748162	483.768	507.517
22) L5 AR-1248-2	4.761	4.009	67582254	88220990	289.848	359.991
23) L5 AR-1248-3	4.948	4.047	80912854	90145683	291.642	379.559 #
24) L5 AR-1248-4	5.310	4.205	66840101	98224096	239.987	340.876 #
25) L5 AR-1248-5	5.373	4.581	15226062	19797004	56.039	74.060 #
26) L6 AR-1254-1	5.310	4.542	66840101	93818966	216.944	220.993
27) L6 AR-1254-2	5.526	4.689	61559156	68479662	130.767	181.763 #
28) L6 AR-1254-3	5.873	5.090	30323109	124.3E6	62.794	213.086 #
29) L6 AR-1254-4	6.153	5.298	17277105	9238542	54.777	27.236 #
30) L6 AR-1254-5	6.561	5.701	171.1E6	191.7E6	471.719	365.851
31) L7 AR-1260-1	6.037	5.200	146.4E6	176.5E6	427.007	440.621
32) L7 AR-1260-2	6.294	5.389	136.0E6	187.8E6	362.340	402.163
33) L7 AR-1260-3	6.645	5.531	123.1E6	184.2E6	408.542	413.981
34) L7 AR-1260-4	6.859	5.992	131.3E6	162.4E6	402.250	414.182
35) L7 AR-1260-5	7.164	6.236	208.1E6	316.8E6	356.537	382.266
36) L8 AR-1262-1	6.859	5.744	131.3E6	182.1E6	304.095	317.670
37) L8 AR-1262-2	7.164	5.992	208.1E6	162.4E6	289.651	307.317
38) L8 AR-1262-3	7.438	6.514	131.1E6	81049408	273.023	201.053 #
39) L8 AR-1262-4	7.510	6.573	106.5E6	227.0E6	269.582	318.185
40) L8 AR-1262-5	8.007	7.065	51508121	85196592	238.974	256.289
41) L9 AR-1268-1	7.438	6.514	131.1E6	81049408	150.925	70.427 #

Data Path : Z:\pestpcbsrv\HPCHEM1\ECD\_Q\Data\PQ040825\  
 Data File : PQ070129.D  
 Signal(s) : Signal #1: ECD1A.ch Signal #2: ECD2B.ch  
 Acq On : 08 Apr 2025 10:20  
 Operator : YP\AJ  
 Sample : AR1660CCC400  
 Misc :  
 ALS Vial : 3 Sample Multiplier: 1

Instrument :  
 ECD\_Q  
 ClientSampleId :

Integration File signal 1: autoint1.e  
 Integration File signal 2: autoint2.e  
 Quant Time: Apr 08 10:33:28 2025  
 Quant Method : Z:\pestpcbsrv\HPCHEM1\ECD\_Q\Method\PQ031725CLP.M  
 Quant Title : GC EXTRACTABLES  
 QLast Update : Wed Mar 19 15:05:25 2025  
 Response via : Initial Calibration  
 Integrator: ChemStation

Volume Inj. : 1 µl  
 Signal #1 Phase : ZB MR1 Signal #2 Phase: ZB MR2  
 Signal #1 Info : 30Mx0.32mmx 0.5µm Signal #2 Info : 30M x 0.32mm x 0.25µm

	Compound	RT#1	RT#2	Resp#1	Resp#2	ng/ml	ng/ml
42)	L9 AR-1268-2	7.510	6.573	106.5E6	227.0E6	131.226	216.921 #
43)	L9 AR-1268-3	7.696	6.777	2753333	4893894	4.078	5.185 #
44)	L9 AR-1268-4	8.007	7.065	51508121	85196592	204.832	225.179
45)	L9 AR-1268-5	8.290	7.332	15468238	27661230	8.353	10.218

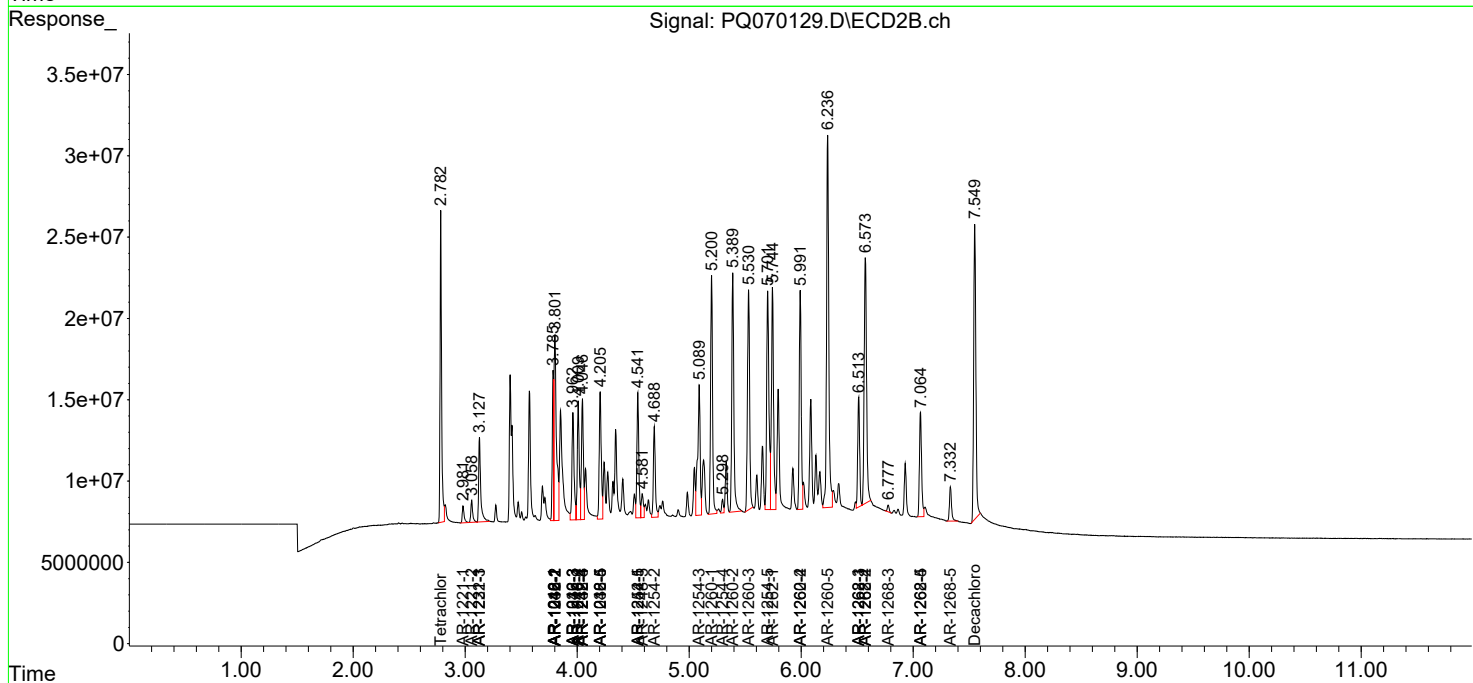
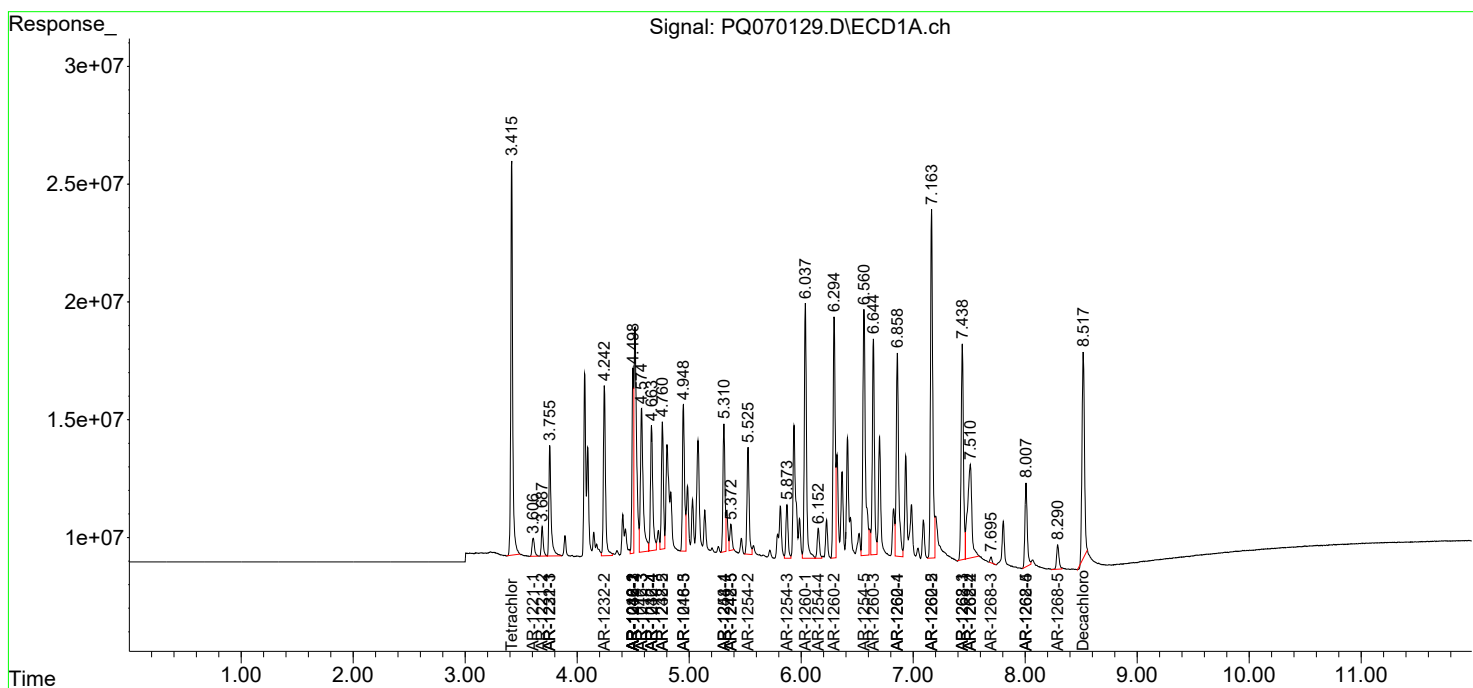
(f)=RT Delta > 1/2 Window (#)=Amounts differ by > 25% (m)=manual int.

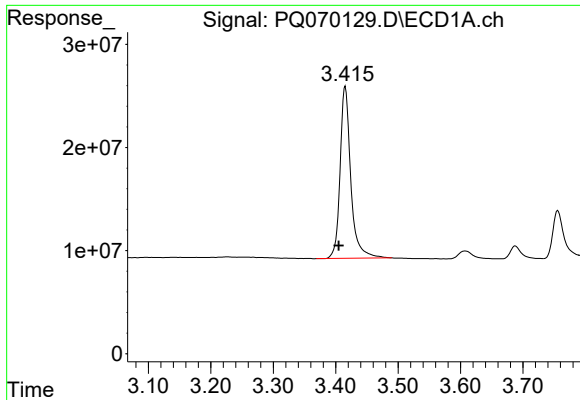
Data Path : Z:\pestpcbsrv\HPCHEM1\ECD\_Q\Data\PQ040825\  
 Data File : PQ070129.D  
 Signal(s) : Signal #1: ECD1A.ch Signal #2: ECD2B.ch  
 Acq On : 08 Apr 2025 10:20  
 Operator : YP\AJ  
 Sample : AR1660CCC400  
 Misc :  
 ALS Vial : 3 Sample Multiplier: 1

Instrument :  
 ECD\_Q  
 ClientSampleId :

Integration File signal 1: autoint1.e  
 Integration File signal 2: autoint2.e  
 Quant Time: Apr 08 10:33:28 2025  
 Quant Method : Z:\pestpcbsrv\HPCHEM1\ECD\_Q\Method\PQ031725CLP.M  
 Quant Title : GC EXTRACTABLES  
 QLast Update : Wed Mar 19 15:05:25 2025  
 Response via : Initial Calibration  
 Integrator: ChemStation

Volume Inj. : 1 µl  
 Signal #1 Phase : ZB MR1 Signal #2 Phase: ZB MR2  
 Signal #1 Info : 30Mx0.32mmx 0.5µm Signal #2 Info : 30M x 0.32mm x 0.25µm

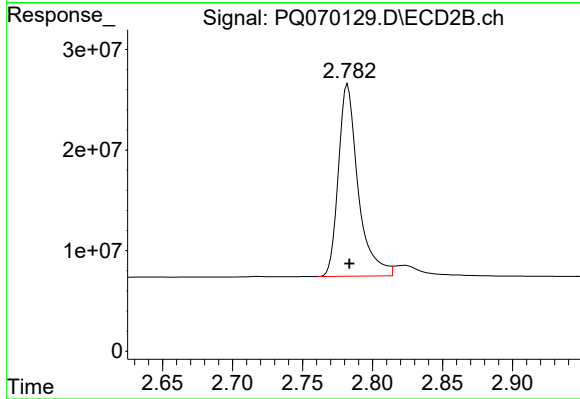




#1 Tetrachloro-m-xylene

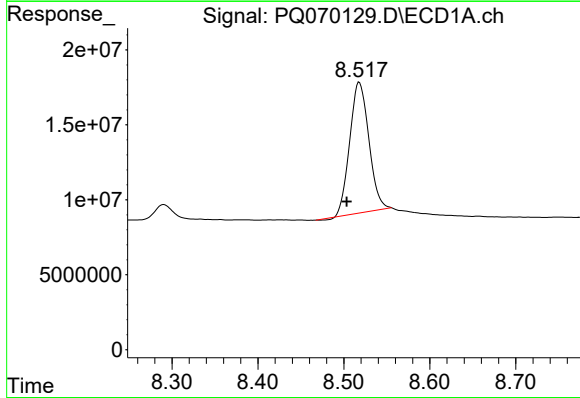
R.T.: 3.415 min  
 Delta R.T.: 0.010 min  
 Response: 198753207  
 Conc: 22.23 ng/ml

Instrument :  
 ECD\_Q  
 ClientSampleId :



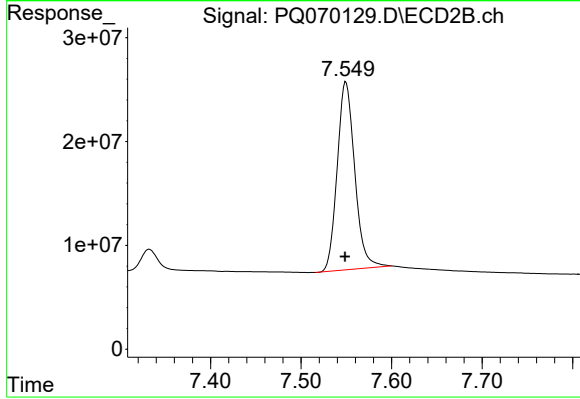
#1 Tetrachloro-m-xylene

R.T.: 2.782 min  
 Delta R.T.: -0.001 min  
 Response: 187186720  
 Conc: 23.21 ng/ml



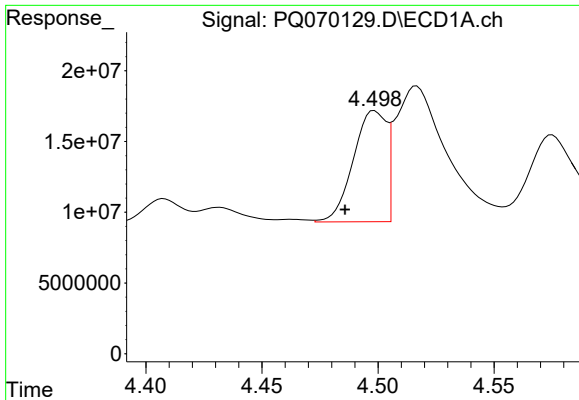
#2 Decachlorobiphenyl

R.T.: 8.518 min  
 Delta R.T.: 0.015 min  
 Response: 135209782  
 Conc: 35.60 ng/ml



#2 Decachlorobiphenyl

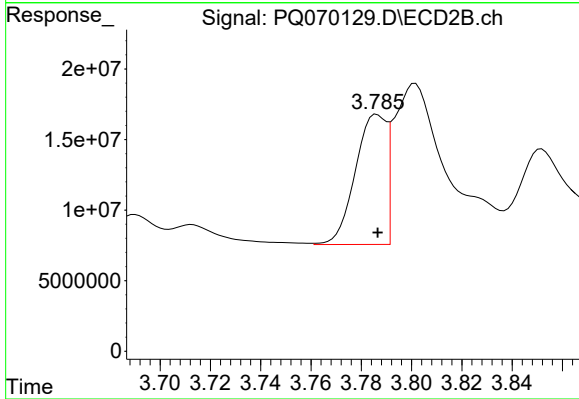
R.T.: 7.550 min  
 Delta R.T.: 0.001 min  
 Response: 243789466  
 Conc: 41.59 ng/ml



#3 AR-1016-1

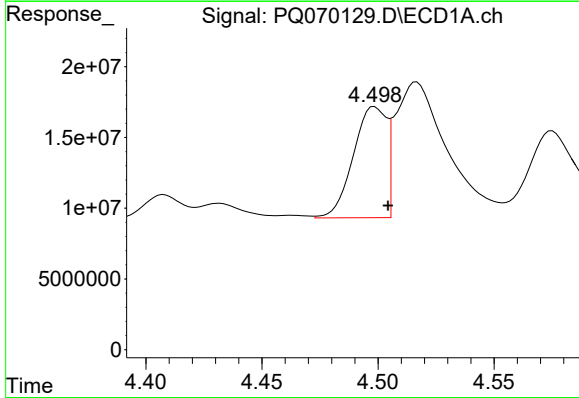
R.T.: 4.499 min  
 Delta R.T.: 0.013 min  
 Response: 77930738  
 Conc: 338.79 ng/ml

Instrument :  
 ECD\_Q  
 ClientSampleId :



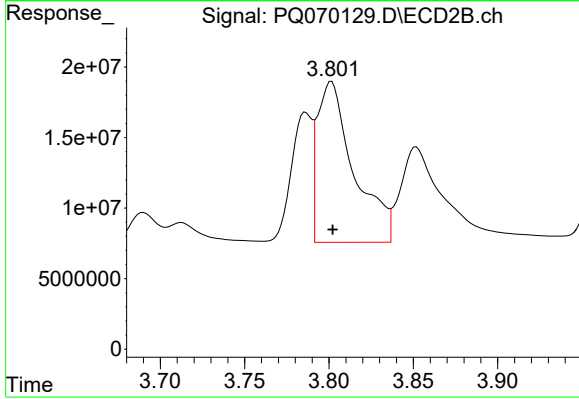
#3 AR-1016-1

R.T.: 3.786 min  
 Delta R.T.: 0.000 min  
 Response: 78748162  
 Conc: 352.21 ng/ml



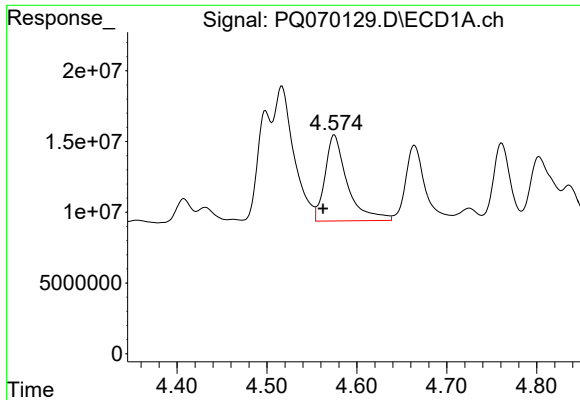
#4 AR-1016-2

R.T.: 4.499 min  
 Delta R.T.: -0.006 min  
 Response: 77930738  
 Conc: 201.33 ng/ml



#4 AR-1016-2

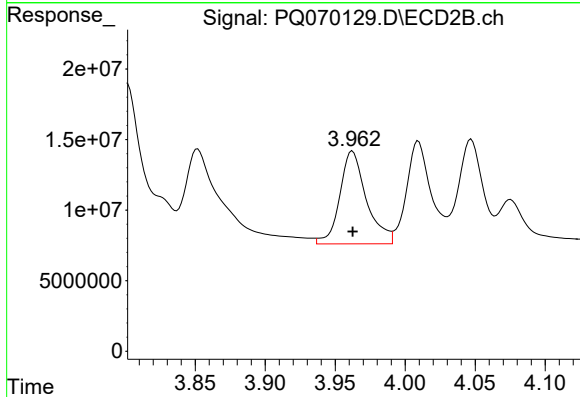
R.T.: 3.801 min  
 Delta R.T.: 0.000 min  
 Response: 171197164  
 Conc: 469.03 ng/ml



#5 AR-1016-3

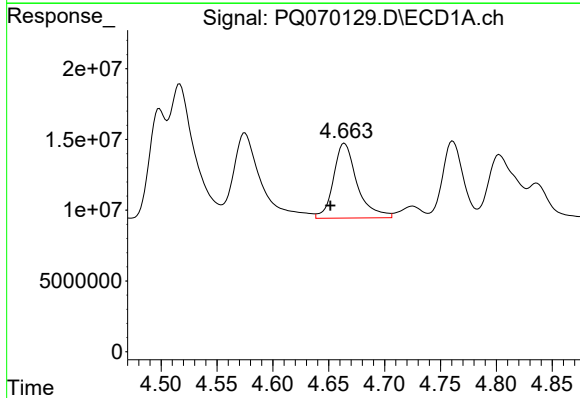
R.T.: 4.575 min  
 Delta R.T.: 0.013 min  
 Response: 105045219  
 Conc: 416.52 ng/ml

Instrument :  
 ECD\_Q  
 ClientSampleId :



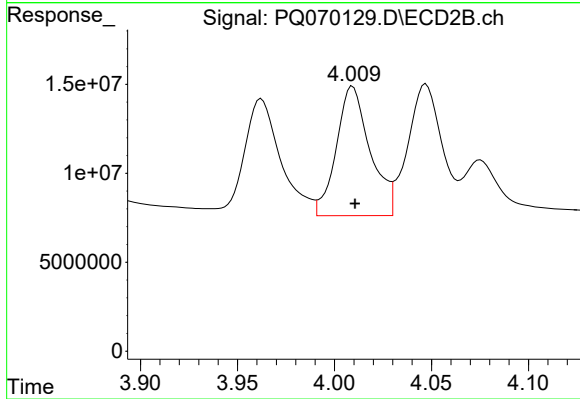
#5 AR-1016-3

R.T.: 3.962 min  
 Delta R.T.: 0.000 min  
 Response: 87510229  
 Conc: 423.47 ng/ml



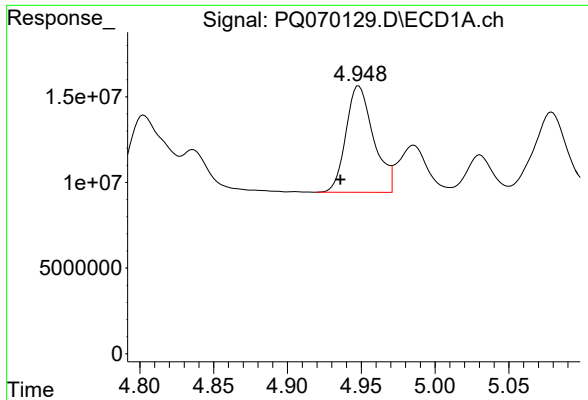
#6 AR-1016-4

R.T.: 4.664 min  
 Delta R.T.: 0.013 min  
 Response: 78084742  
 Conc: 390.91 ng/ml



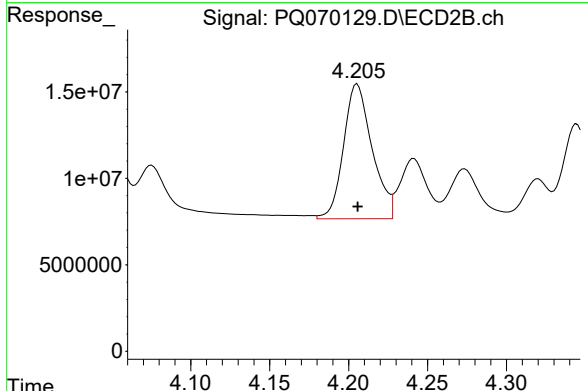
#6 AR-1016-4

R.T.: 4.009 min  
 Delta R.T.: -0.001 min  
 Response: 88220990  
 Conc: 465.05 ng/ml

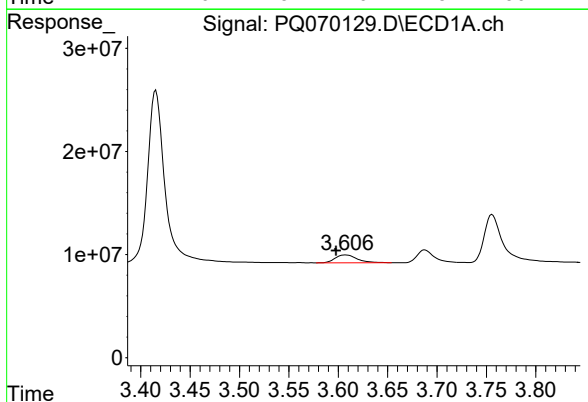


#7 AR-1016-5  
 R.T.: 4.948 min  
 Delta R.T.: 0.013 min  
 Response: 80912854  
 Conc: 412.68 ng/ml

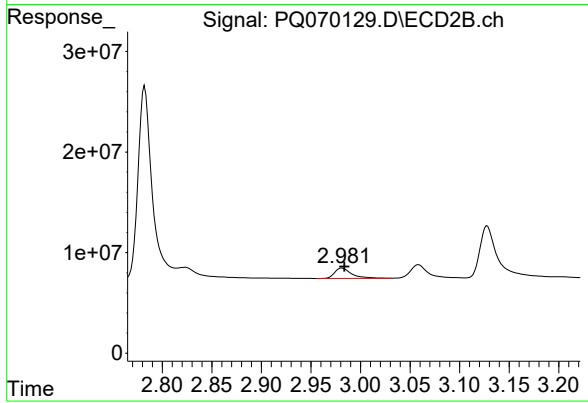
Instrument :  
 ECD\_Q  
 ClientSampleId :



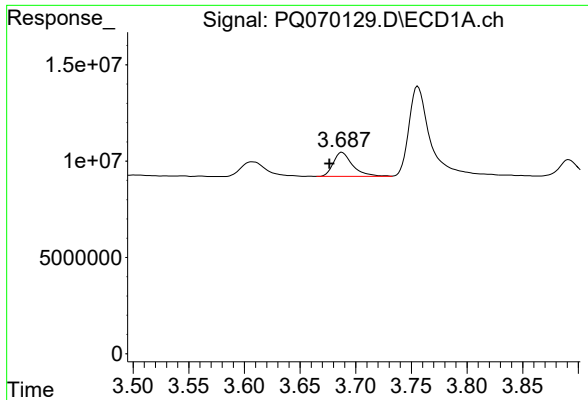
#7 AR-1016-5  
 R.T.: 4.205 min  
 Delta R.T.: 0.000 min  
 Response: 98224096  
 Conc: 440.51 ng/ml



#8 AR-1221-1  
 R.T.: 3.607 min  
 Delta R.T.: 0.009 min  
 Response: 11933516  
 Conc: 120.42 ng/ml

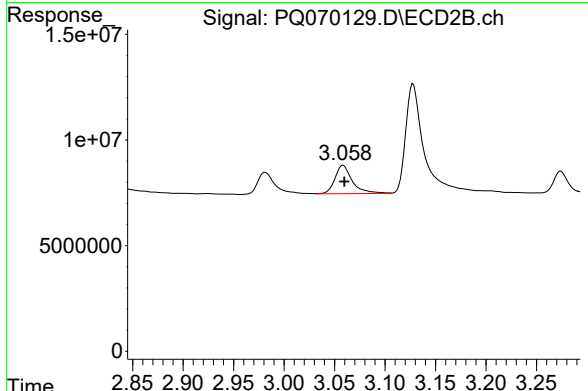


#8 AR-1221-1  
 R.T.: 2.981 min  
 Delta R.T.: -0.002 min  
 Response: 12533831  
 Conc: 129.96 ng/ml

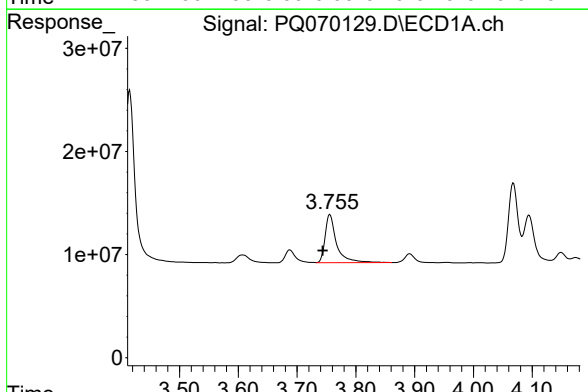


#9 AR-1221-2  
 R.T.: 3.688 min  
 Delta R.T.: 0.011 min  
 Response: 15027130  
 Conc: 220.98 ng/ml

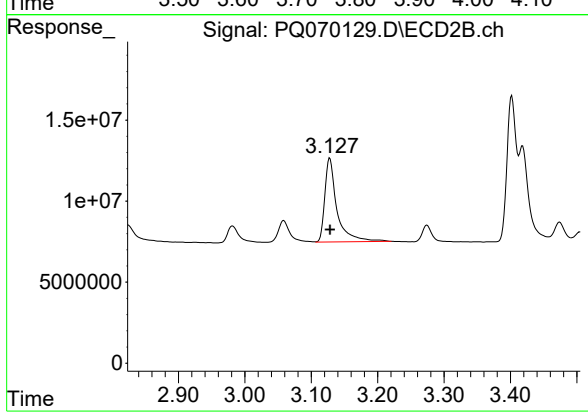
Instrument :  
 ECD\_Q  
 ClientSampleId :



#9 AR-1221-2  
 R.T.: 3.059 min  
 Delta R.T.: -0.001 min  
 Response: 16149545  
 Conc: 240.74 ng/ml

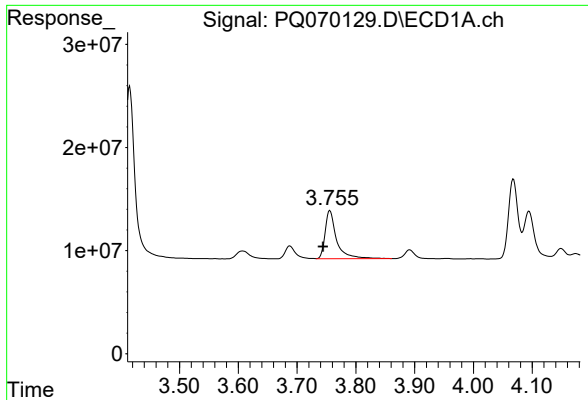


#10 AR-1221-3  
 R.T.: 3.756 min  
 Delta R.T.: 0.012 min  
 Response: 63326040  
 Conc: 288.63 ng/ml



#10 AR-1221-3  
 R.T.: 3.128 min  
 Delta R.T.: 0.000 min  
 Response: 65847960  
 Conc: 307.85 ng/ml

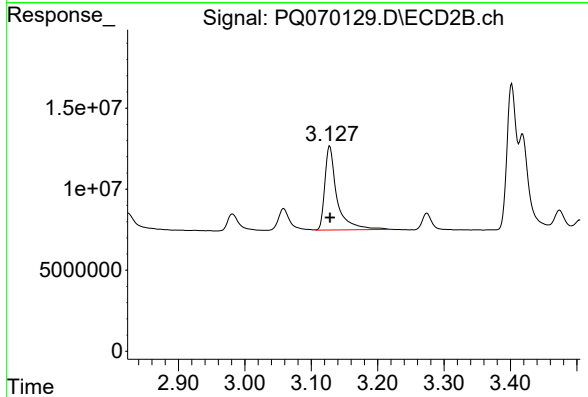




#11 AR-1232-1

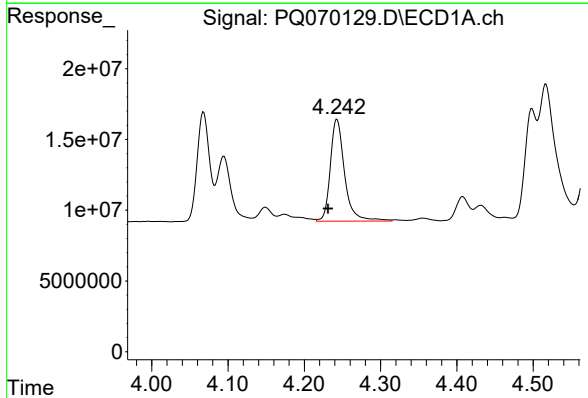
R.T.: 3.756 min  
 Delta R.T.: 0.011 min  
 Response: 63326040  
 Conc: 353.17 ng/ml

Instrument :  
 ECD\_Q  
 ClientSampleId :



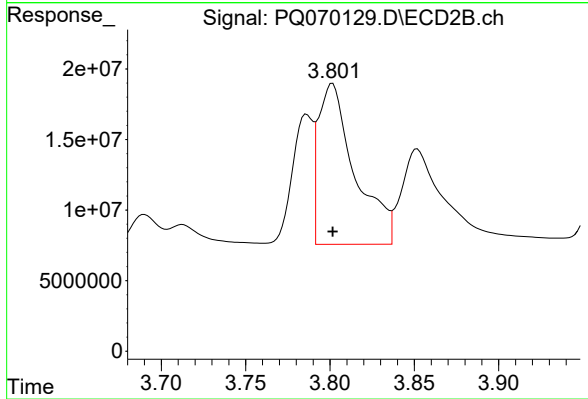
#11 AR-1232-1

R.T.: 3.128 min  
 Delta R.T.: 0.000 min  
 Response: 65847960  
 Conc: 367.35 ng/ml



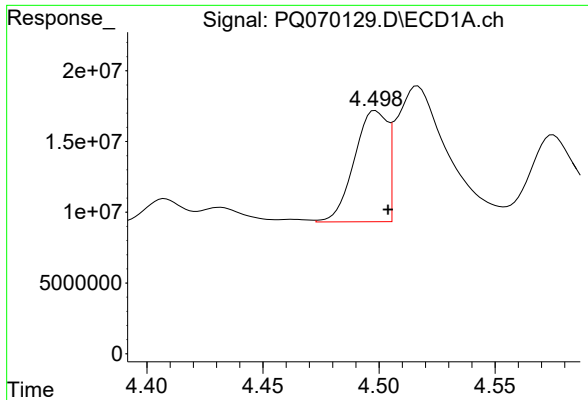
#12 AR-1232-2

R.T.: 4.243 min  
 Delta R.T.: 0.012 min  
 Response: 94031223  
 Conc: 915.43 ng/ml



#12 AR-1232-2

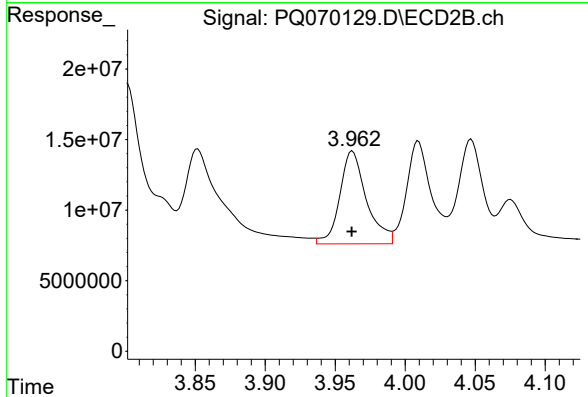
R.T.: 3.801 min  
 Delta R.T.: 0.000 min  
 Response: 171197164  
 Conc: 941.27 ng/ml



#13 AR-1232-3

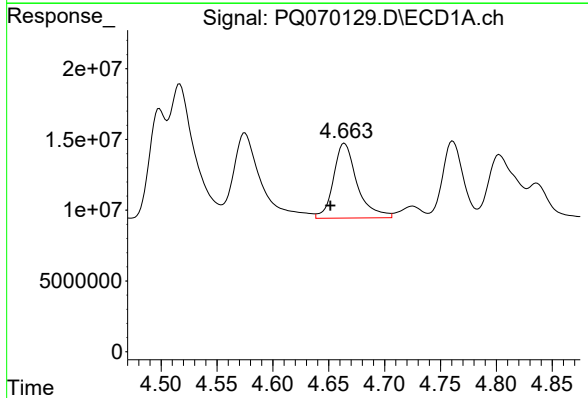
R.T.: 4.499 min  
 Delta R.T.: -0.005 min  
 Response: 77930738  
 Conc: 413.97 ng/ml

Instrument :  
 ECD\_Q  
 ClientSampleId :



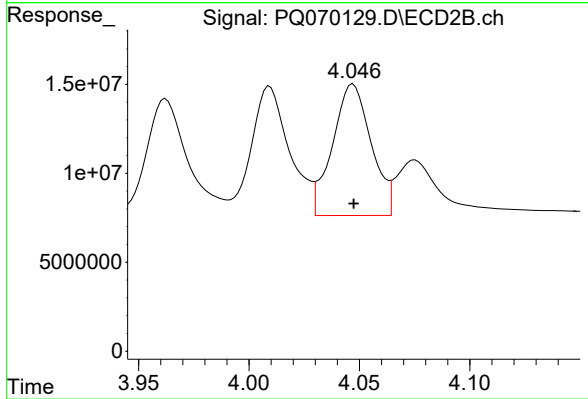
#13 AR-1232-3

R.T.: 3.962 min  
 Delta R.T.: 0.000 min  
 Response: 87510229  
 Conc: 920.63 ng/ml



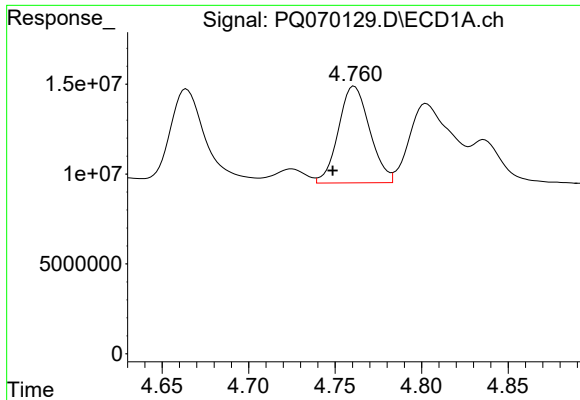
#14 AR-1232-4

R.T.: 4.664 min  
 Delta R.T.: 0.013 min  
 Response: 78084742  
 Conc: 810.80 ng/ml



#14 AR-1232-4

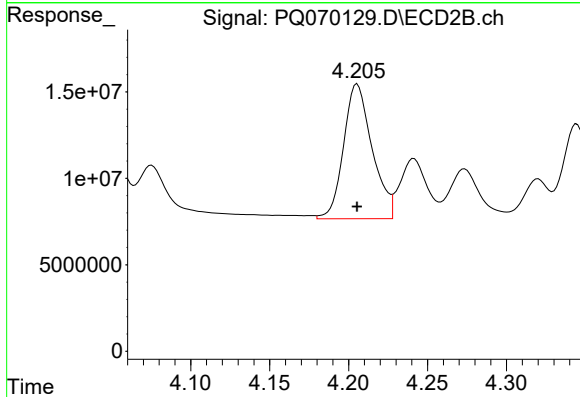
R.T.: 4.047 min  
 Delta R.T.: 0.000 min  
 Response: 90145683  
 Conc: 1078.66 ng/ml



#15 AR-1232-5

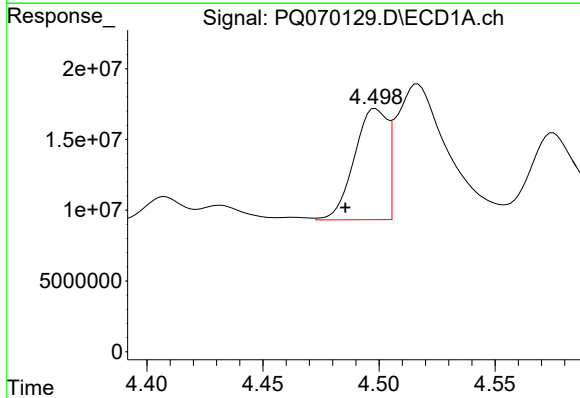
R.T.: 4.761 min  
 Delta R.T.: 0.012 min  
 Response: 67582254  
 Conc: 1032.71 ng/ml

Instrument :  
 ECD\_Q  
 ClientSampleId :



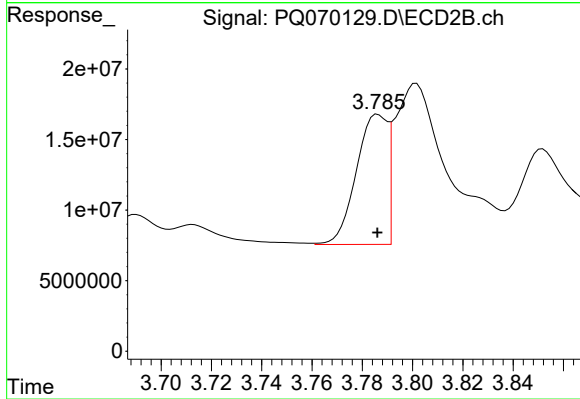
#15 AR-1232-5

R.T.: 4.205 min  
 Delta R.T.: 0.000 min  
 Response: 98224096  
 Conc: 1046.12 ng/ml



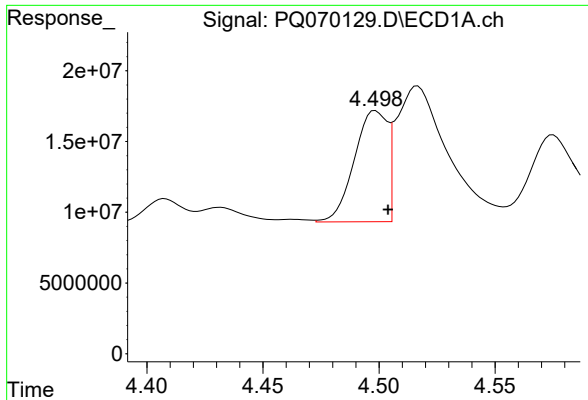
#16 AR-1242-1

R.T.: 4.499 min  
 Delta R.T.: 0.013 min  
 Response: 77930738  
 Conc: 379.64 ng/ml



#16 AR-1242-1

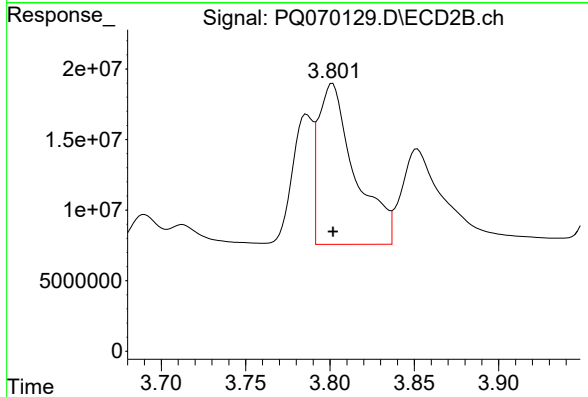
R.T.: 3.786 min  
 Delta R.T.: 0.000 min  
 Response: 78748162  
 Conc: 399.68 ng/ml



#17 AR-1242-2

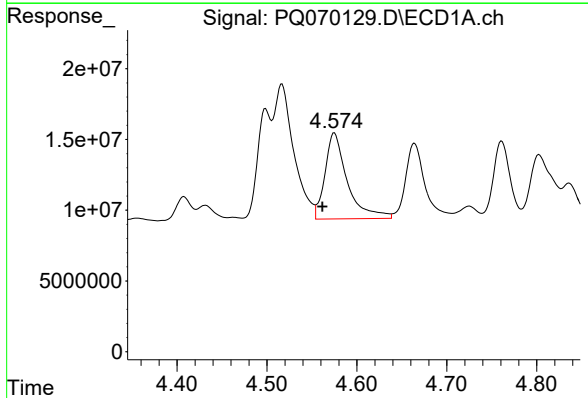
R.T.: 4.499 min  
 Delta R.T.: -0.005 min  
 Response: 77930738  
 Conc: 232.97 ng/ml

Instrument :  
 ECD\_Q  
 ClientSampleId :



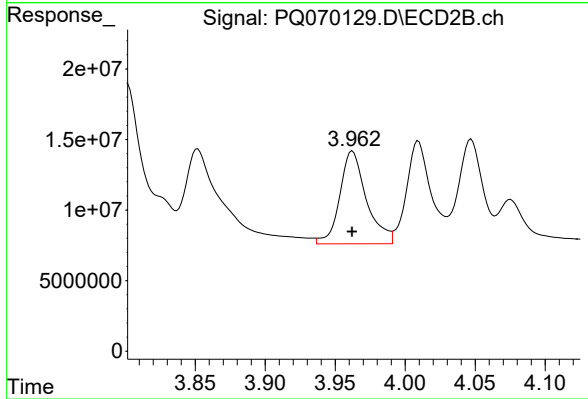
#17 AR-1242-2

R.T.: 3.801 min  
 Delta R.T.: 0.000 min  
 Response: 171197164  
 Conc: 555.76 ng/ml



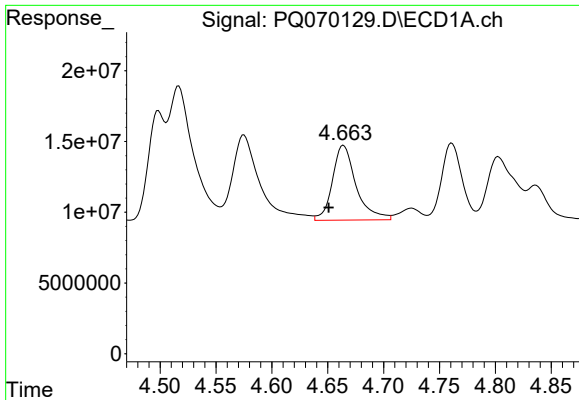
#18 AR-1242-3

R.T.: 4.575 min  
 Delta R.T.: 0.013 min  
 Response: 105045219  
 Conc: 489.92 ng/ml



#18 AR-1242-3

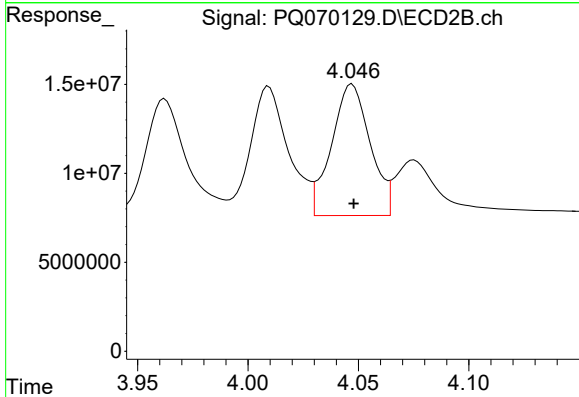
R.T.: 3.962 min  
 Delta R.T.: 0.000 min  
 Response: 87510229  
 Conc: 514.82 ng/ml



#19 AR-1242-4

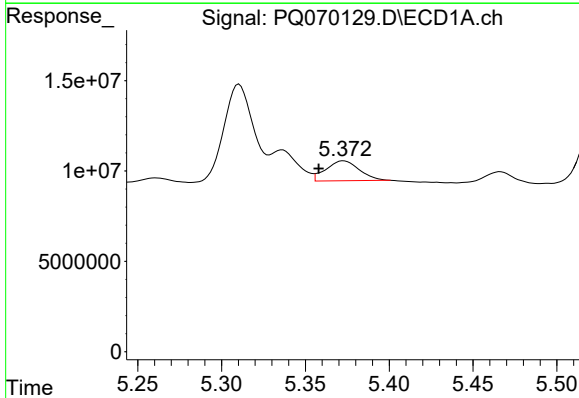
R.T.: 4.664 min  
 Delta R.T.: 0.013 min  
 Response: 78084742  
 Conc: 454.22 ng/ml

Instrument :  
 ECD\_Q  
 ClientSampleId :



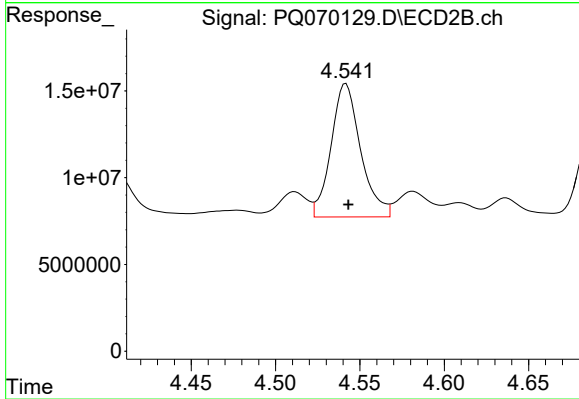
#19 AR-1242-4

R.T.: 4.047 min  
 Delta R.T.: 0.000 min  
 Response: 90145683  
 Conc: 552.56 ng/ml



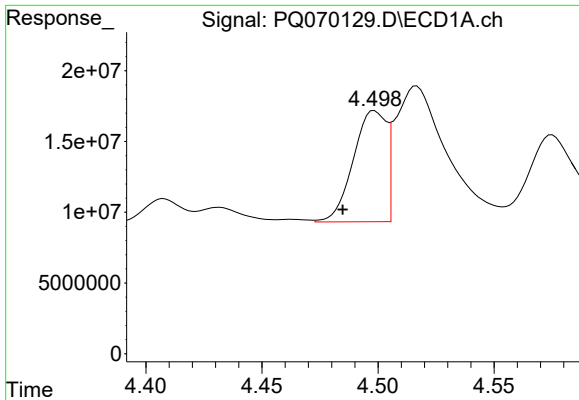
#20 AR-1242-5

R.T.: 5.373 min  
 Delta R.T.: 0.015 min  
 Response: 15226062  
 Conc: 98.97 ng/ml



#20 AR-1242-5

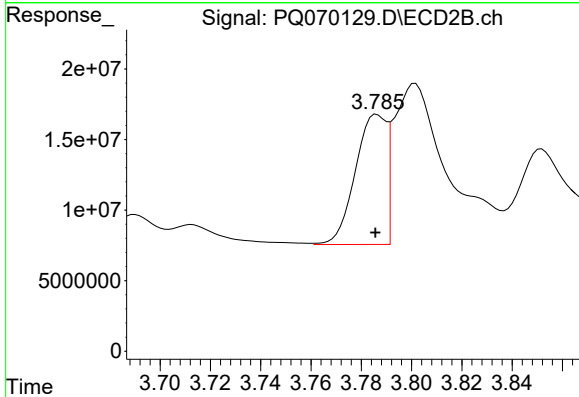
R.T.: 4.542 min  
 Delta R.T.: -0.001 min  
 Response: 93818966  
 Conc: 472.81 ng/ml



#21 AR-1248-1

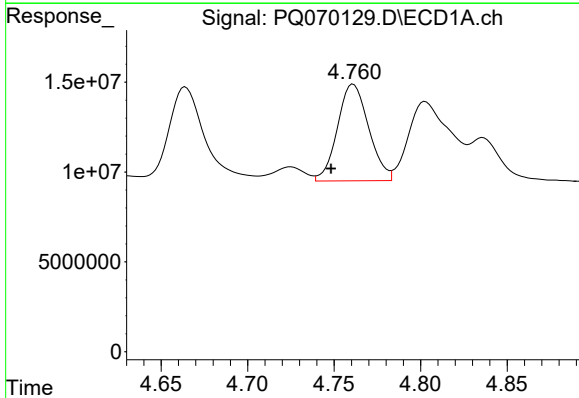
R.T.: 4.499 min  
 Delta R.T.: 0.014 min  
 Response: 77930738  
 Conc: 483.77 ng/ml

Instrument :  
 ECD\_Q  
 ClientSampleId :



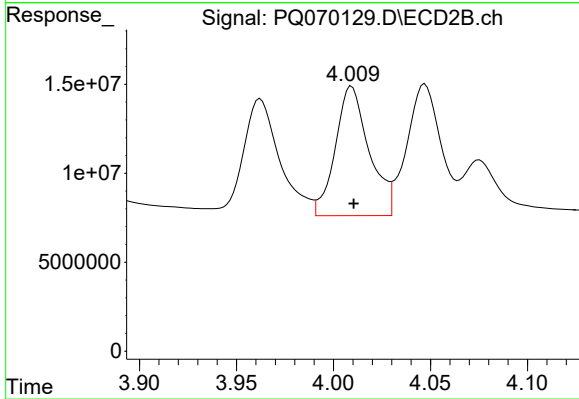
#21 AR-1248-1

R.T.: 3.786 min  
 Delta R.T.: 0.000 min  
 Response: 78748162  
 Conc: 507.52 ng/ml



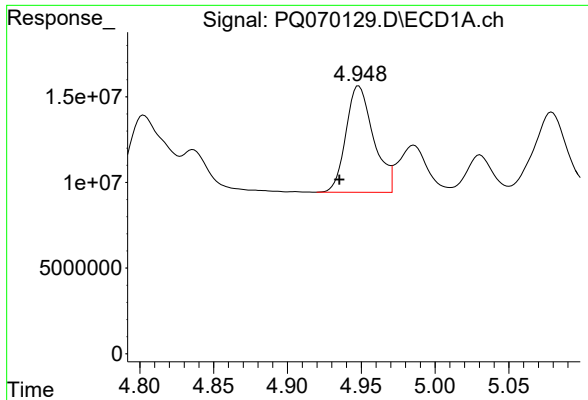
#22 AR-1248-2

R.T.: 4.761 min  
 Delta R.T.: 0.013 min  
 Response: 67582254  
 Conc: 289.85 ng/ml



#22 AR-1248-2

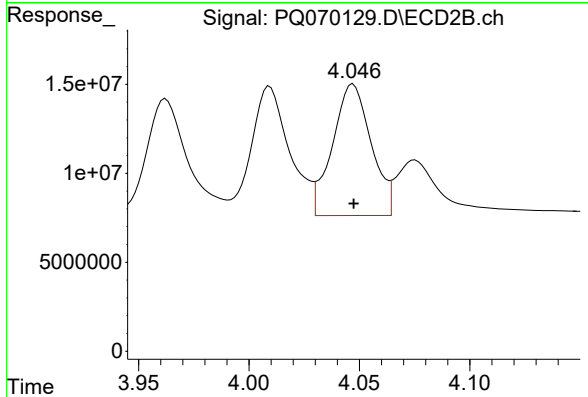
R.T.: 4.009 min  
 Delta R.T.: -0.001 min  
 Response: 88220990  
 Conc: 359.99 ng/ml



#23 AR-1248-3

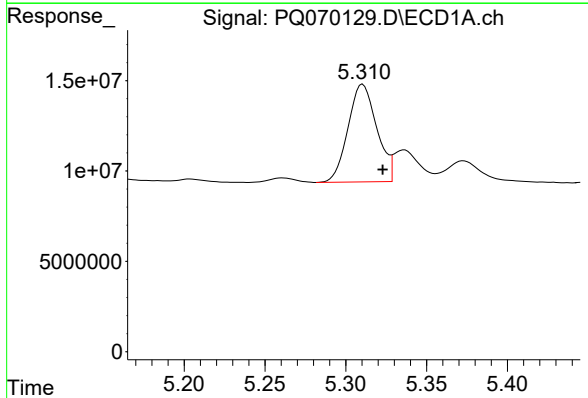
R.T.: 4.948 min  
 Delta R.T.: 0.013 min  
 Response: 80912854  
 Conc: 291.64 ng/ml

Instrument :  
 ECD\_Q  
 ClientSampleId :



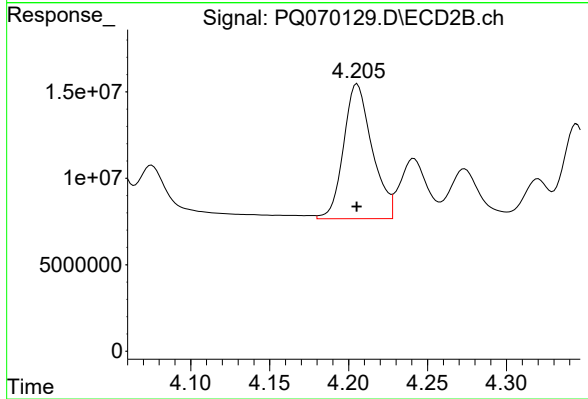
#23 AR-1248-3

R.T.: 4.047 min  
 Delta R.T.: 0.000 min  
 Response: 90145683  
 Conc: 379.56 ng/ml



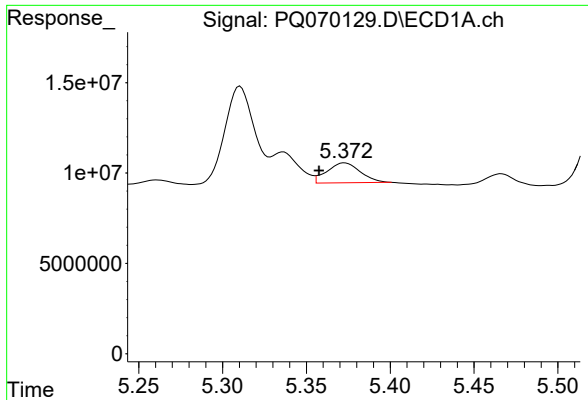
#24 AR-1248-4

R.T.: 5.310 min  
 Delta R.T.: -0.012 min  
 Response: 66840101  
 Conc: 239.99 ng/ml



#24 AR-1248-4

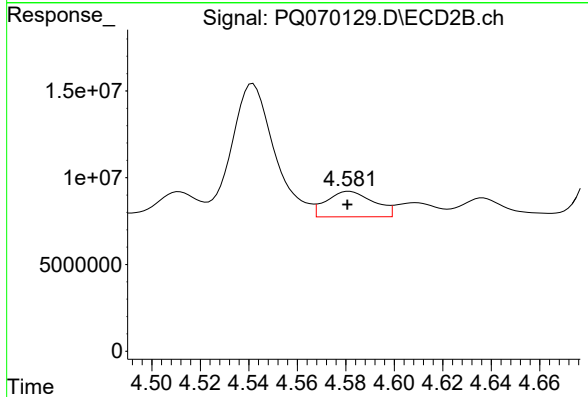
R.T.: 4.205 min  
 Delta R.T.: 0.000 min  
 Response: 98224096  
 Conc: 340.88 ng/ml



#25 AR-1248-5

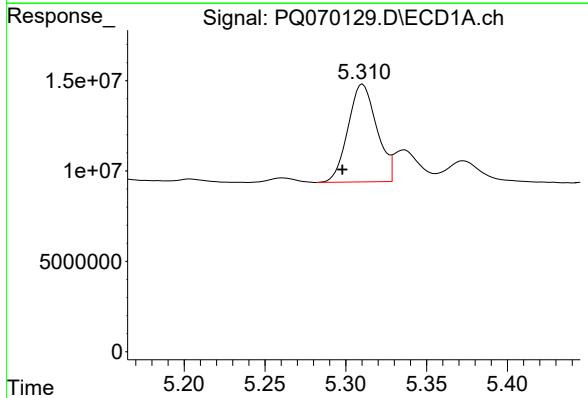
R.T.: 5.373 min  
 Delta R.T.: 0.015 min  
 Response: 15226062  
 Conc: 56.04 ng/ml

Instrument :  
 ECD\_Q  
 ClientSampleId :



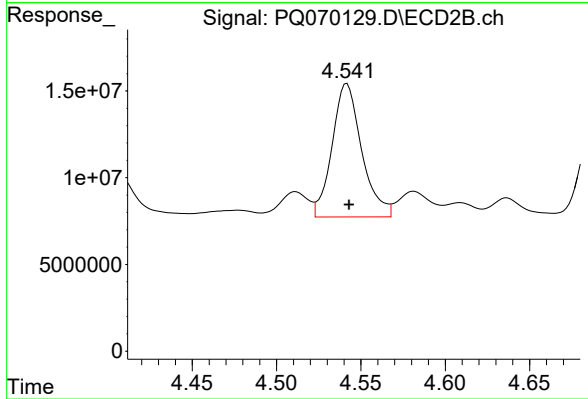
#25 AR-1248-5

R.T.: 4.581 min  
 Delta R.T.: 0.000 min  
 Response: 19797004  
 Conc: 74.06 ng/ml



#26 AR-1254-1

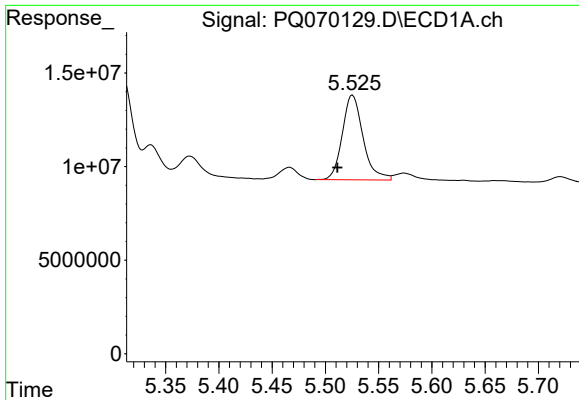
R.T.: 5.310 min  
 Delta R.T.: 0.013 min  
 Response: 66840101  
 Conc: 216.94 ng/ml



#26 AR-1254-1

R.T.: 4.542 min  
 Delta R.T.: -0.001 min  
 Response: 93818966  
 Conc: 220.99 ng/ml

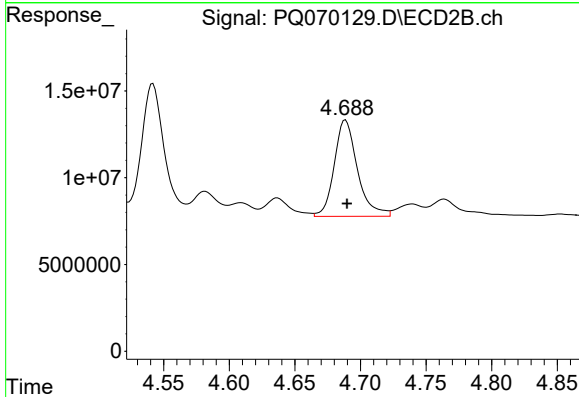




#27 AR-1254-2

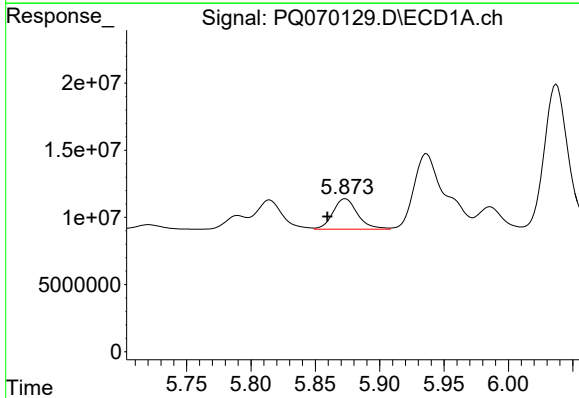
R.T.: 5.526 min  
 Delta R.T.: 0.014 min  
 Response: 61559156  
 Conc: 130.77 ng/ml

Instrument :  
 ECD\_Q  
 ClientSampleId :



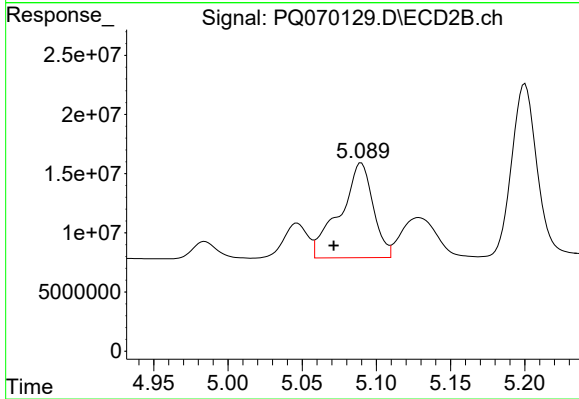
#27 AR-1254-2

R.T.: 4.689 min  
 Delta R.T.: -0.001 min  
 Response: 68479662  
 Conc: 181.76 ng/ml



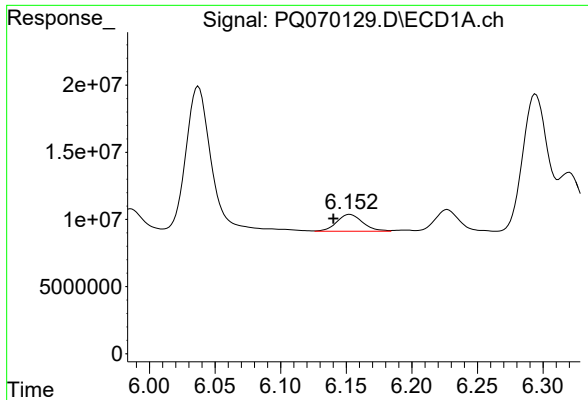
#28 AR-1254-3

R.T.: 5.873 min  
 Delta R.T.: 0.014 min  
 Response: 30323109  
 Conc: 62.79 ng/ml



#28 AR-1254-3

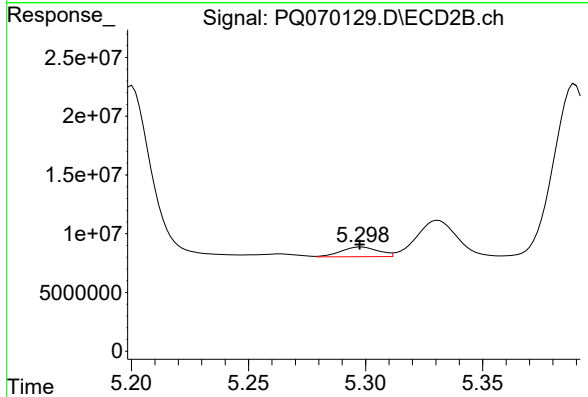
R.T.: 5.090 min  
 Delta R.T.: 0.019 min  
 Response: 124310912  
 Conc: 213.09 ng/ml



#29 AR-1254-4

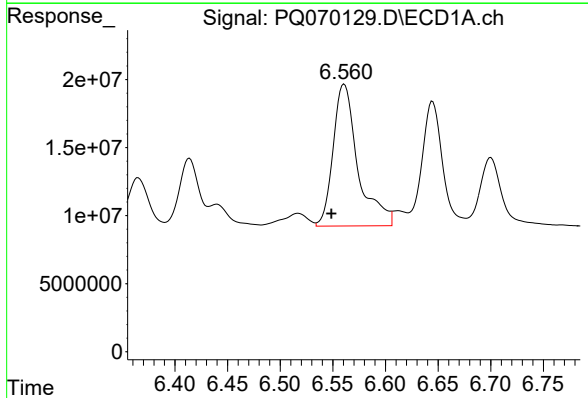
R.T.: 6.153 min  
 Delta R.T.: 0.012 min  
 Response: 17277105  
 Conc: 54.78 ng/ml

Instrument :  
 ECD\_Q  
 ClientSampleId :



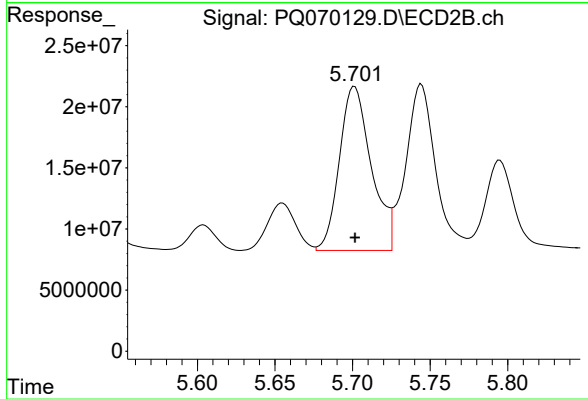
#29 AR-1254-4

R.T.: 5.298 min  
 Delta R.T.: 0.000 min  
 Response: 9238542  
 Conc: 27.24 ng/ml



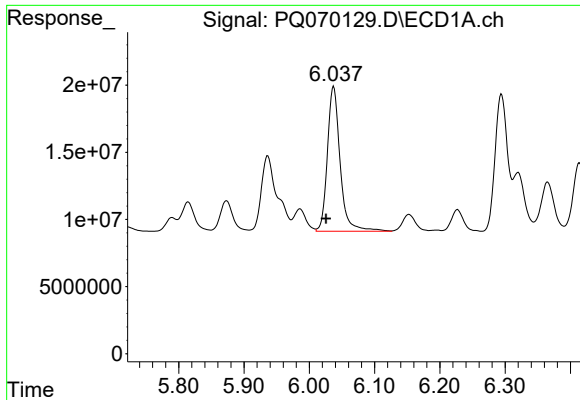
#30 AR-1254-5

R.T.: 6.561 min  
 Delta R.T.: 0.012 min  
 Response: 171090438  
 Conc: 471.72 ng/ml



#30 AR-1254-5

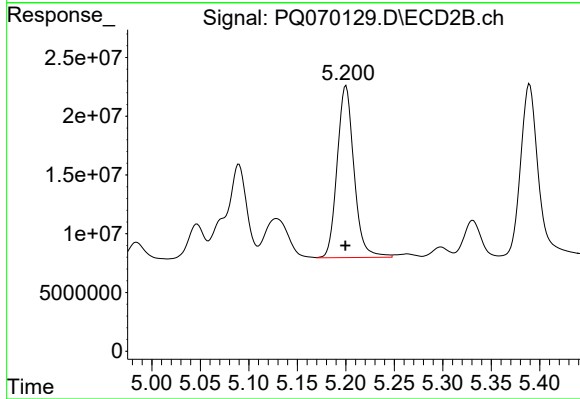
R.T.: 5.701 min  
 Delta R.T.: 0.000 min  
 Response: 191742927  
 Conc: 365.85 ng/ml



#31 AR-1260-1

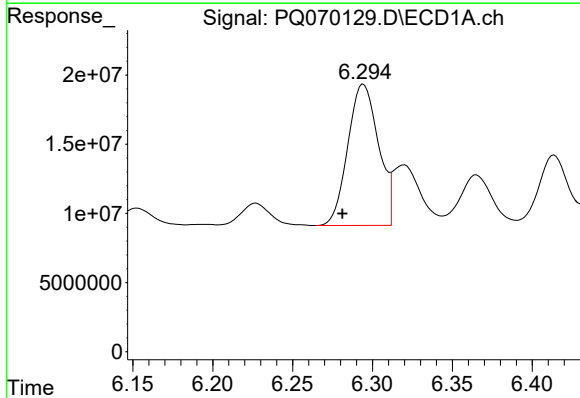
R.T.: 6.037 min  
 Delta R.T.: 0.011 min  
 Response: 146354108  
 Conc: 427.01 ng/ml

Instrument :  
 ECD\_Q  
 ClientSampleId :



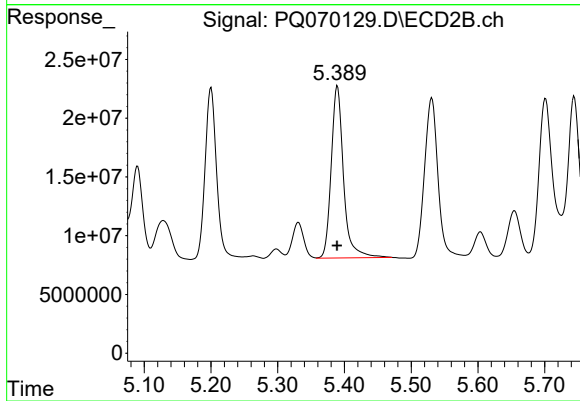
#31 AR-1260-1

R.T.: 5.200 min  
 Delta R.T.: 0.000 min  
 Response: 176512322  
 Conc: 440.62 ng/ml



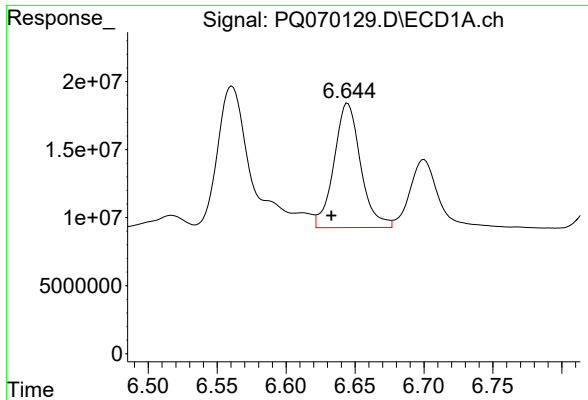
#32 AR-1260-2

R.T.: 6.294 min  
 Delta R.T.: 0.013 min  
 Response: 136013874  
 Conc: 362.34 ng/ml



#32 AR-1260-2

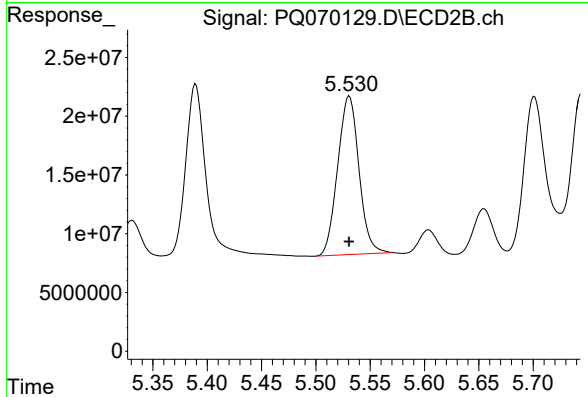
R.T.: 5.389 min  
 Delta R.T.: 0.000 min  
 Response: 187750977  
 Conc: 402.16 ng/ml



#33 AR-1260-3

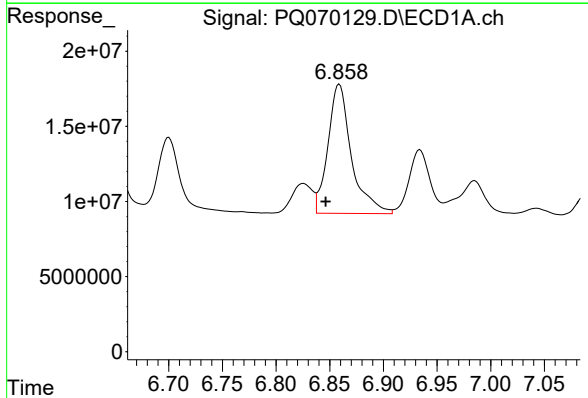
R.T.: 6.645 min  
Delta R.T.: 0.012 min  
Response: 123081564  
Conc: 408.54 ng/ml

Instrument :  
ECD\_Q  
ClientSampleId :



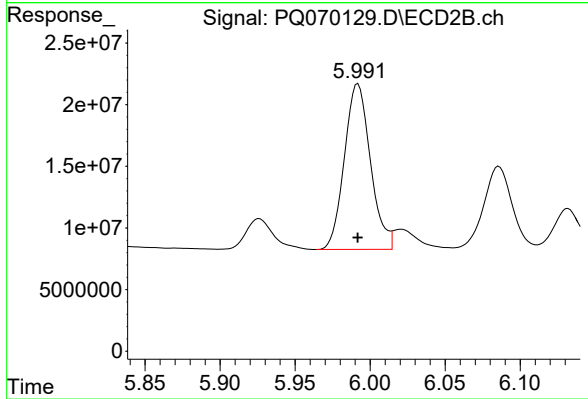
#33 AR-1260-3

R.T.: 5.531 min  
Delta R.T.: 0.000 min  
Response: 184150274  
Conc: 413.98 ng/ml



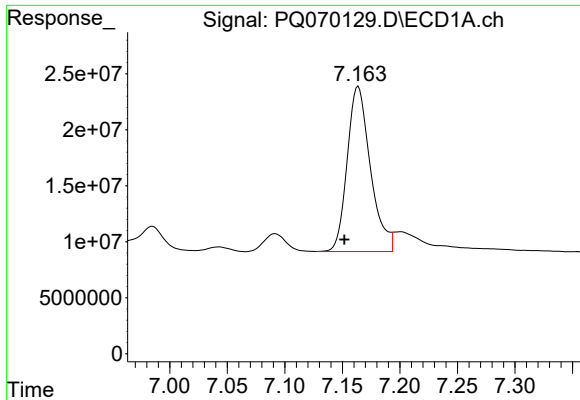
#34 AR-1260-4

R.T.: 6.859 min  
Delta R.T.: 0.013 min  
Response: 131277499  
Conc: 402.25 ng/ml



#34 AR-1260-4

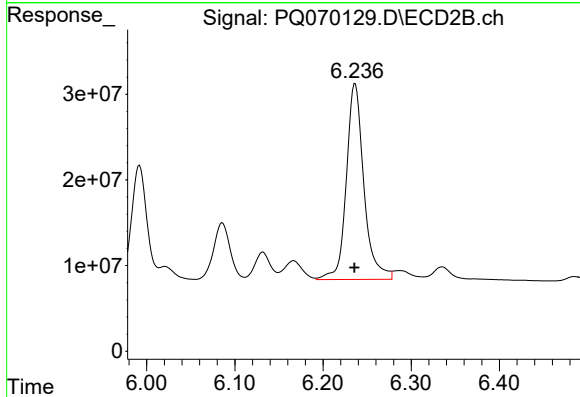
R.T.: 5.992 min  
Delta R.T.: 0.000 min  
Response: 162422881  
Conc: 414.18 ng/ml



#35 AR-1260-5

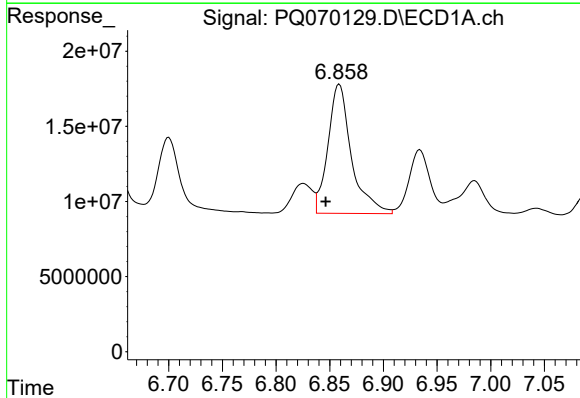
R.T.: 7.164 min  
 Delta R.T.: 0.012 min  
 Response: 208083508  
 Conc: 356.54 ng/ml

Instrument :  
 ECD\_Q  
 ClientSampleId :



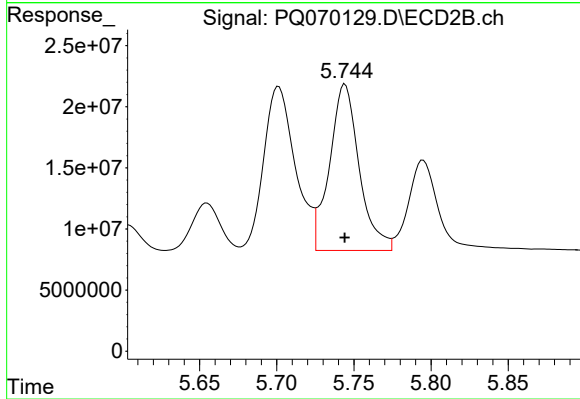
#35 AR-1260-5

R.T.: 6.236 min  
 Delta R.T.: 0.000 min  
 Response: 316829994  
 Conc: 382.27 ng/ml



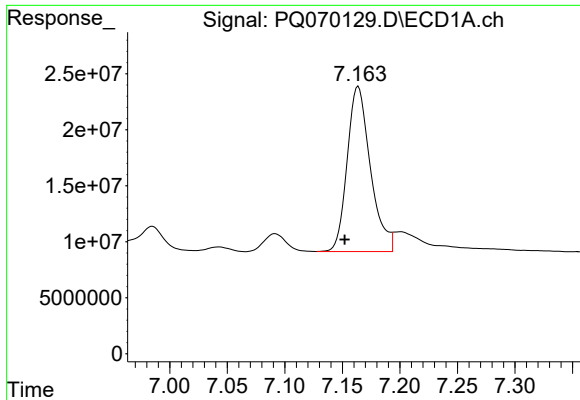
#36 AR-1262-1

R.T.: 6.859 min  
 Delta R.T.: 0.013 min  
 Response: 131277499  
 Conc: 304.09 ng/ml



#36 AR-1262-1

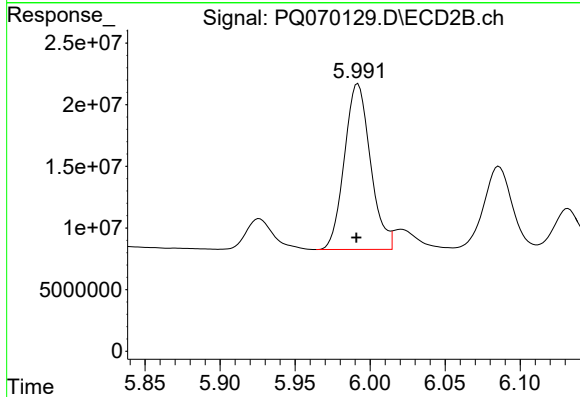
R.T.: 5.744 min  
 Delta R.T.: 0.000 min  
 Response: 182082275  
 Conc: 317.67 ng/ml



#37 AR-1262-2

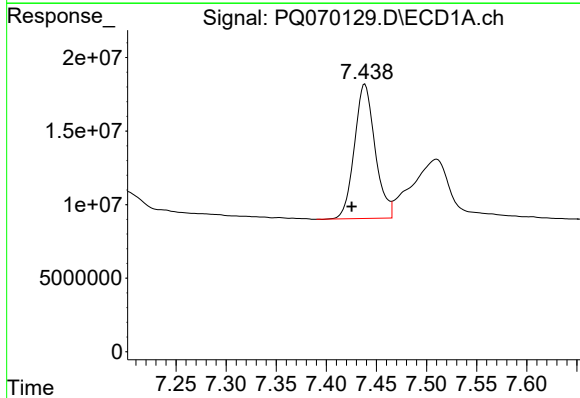
R.T.: 7.164 min  
 Delta R.T.: 0.012 min  
 Response: 208083508  
 Conc: 289.65 ng/ml

Instrument :  
 ECD\_Q  
 ClientSampleId :



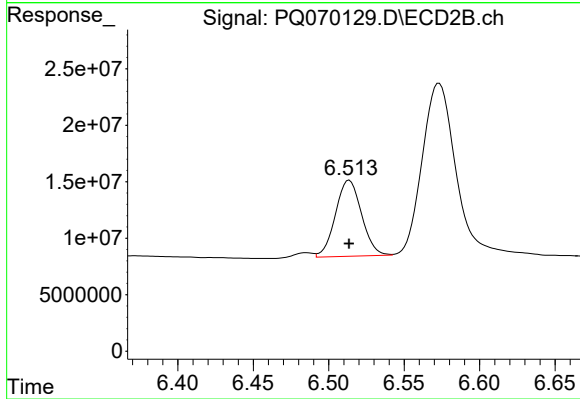
#37 AR-1262-2

R.T.: 5.992 min  
 Delta R.T.: 0.001 min  
 Response: 162422881  
 Conc: 307.32 ng/ml



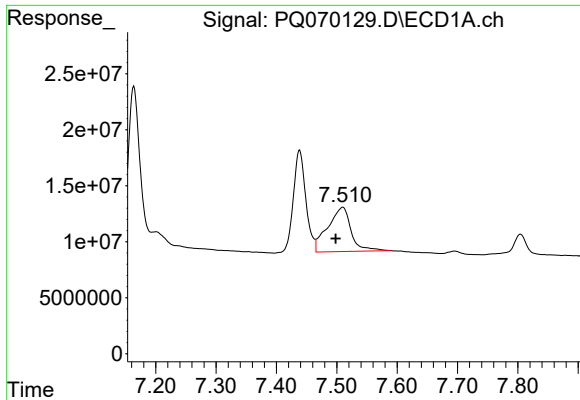
#38 AR-1262-3

R.T.: 7.438 min  
 Delta R.T.: 0.013 min  
 Response: 131094087  
 Conc: 273.02 ng/ml



#38 AR-1262-3

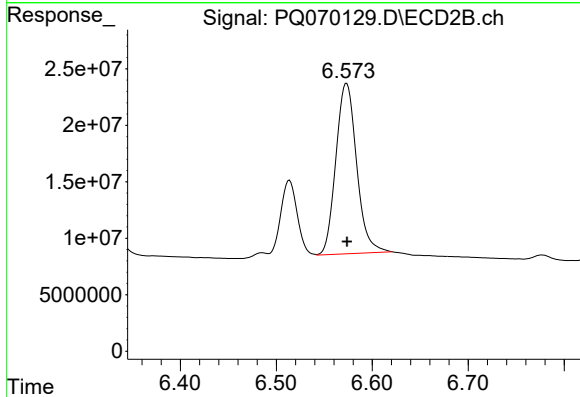
R.T.: 6.514 min  
 Delta R.T.: 0.000 min  
 Response: 81049408  
 Conc: 201.05 ng/ml



#39 AR-1262-4

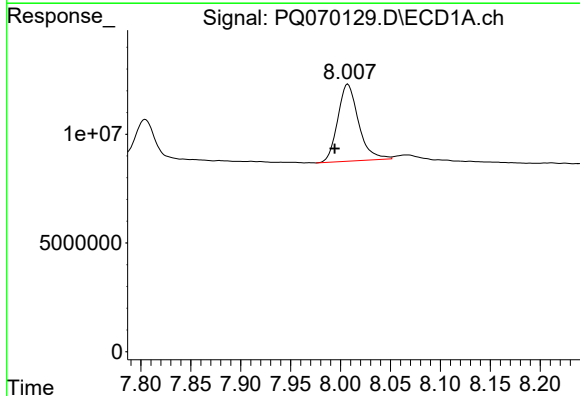
R.T.: 7.510 min  
Delta R.T.: 0.012 min  
Response: 106476963  
Conc: 269.58 ng/ml

Instrument :  
ECD\_Q  
ClientSampleId :



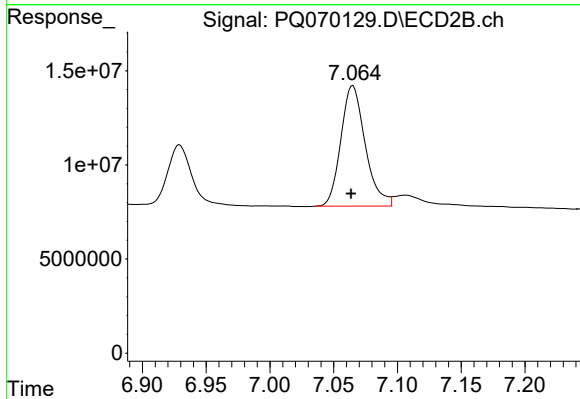
#39 AR-1262-4

R.T.: 6.573 min  
Delta R.T.: 0.000 min  
Response: 227031163  
Conc: 318.19 ng/ml



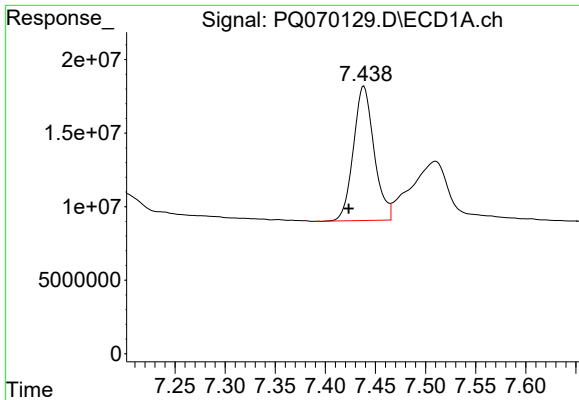
#40 AR-1262-5

R.T.: 8.007 min  
Delta R.T.: 0.013 min  
Response: 51508121  
Conc: 238.97 ng/ml



#40 AR-1262-5

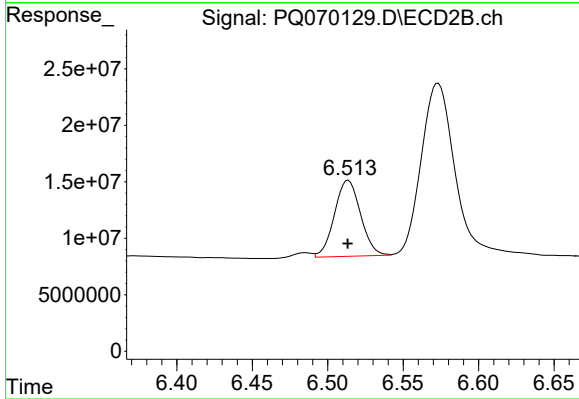
R.T.: 7.065 min  
Delta R.T.: 0.001 min  
Response: 85196592  
Conc: 256.29 ng/ml



#41 AR-1268-1

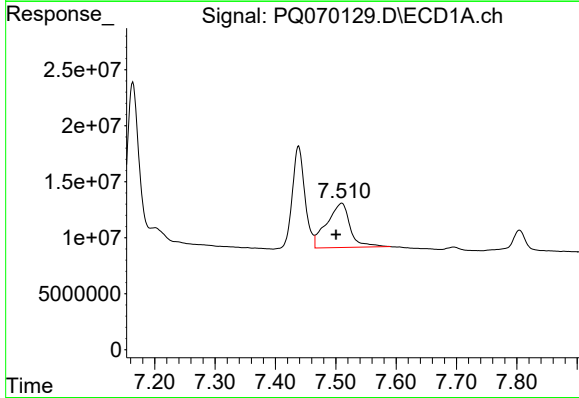
R.T.: 7.438 min  
 Delta R.T.: 0.015 min  
 Response: 131094087  
 Conc: 150.92 ng/ml

Instrument :  
 ECD\_Q  
 ClientSampleId :



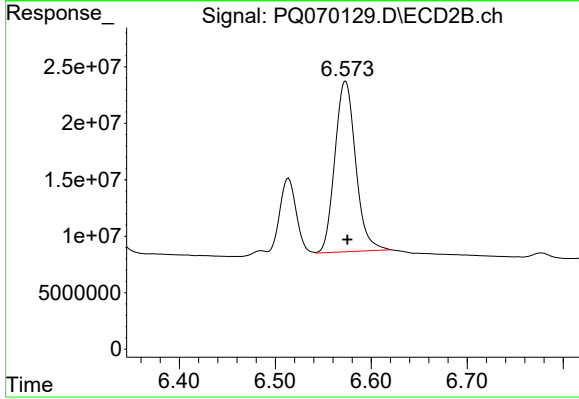
#41 AR-1268-1

R.T.: 6.514 min  
 Delta R.T.: 0.000 min  
 Response: 81049408  
 Conc: 70.43 ng/ml



#42 AR-1268-2

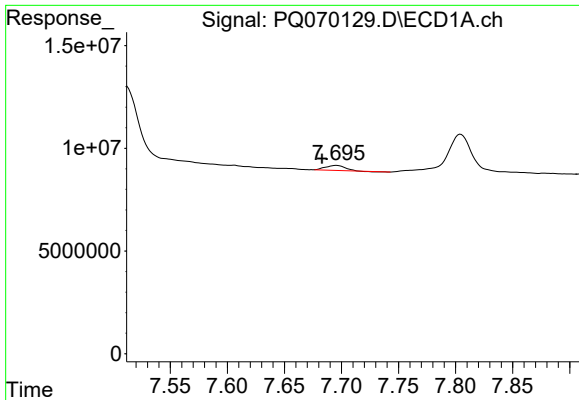
R.T.: 7.510 min  
 Delta R.T.: 0.010 min  
 Response: 106476963  
 Conc: 131.23 ng/ml



#42 AR-1268-2

R.T.: 6.573 min  
 Delta R.T.: -0.002 min  
 Response: 227031163  
 Conc: 216.92 ng/ml

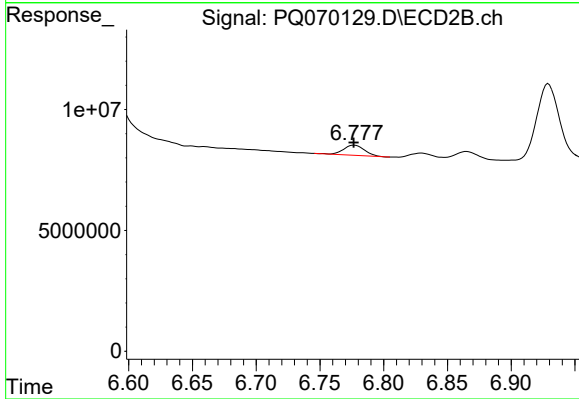




#43 AR-1268-3

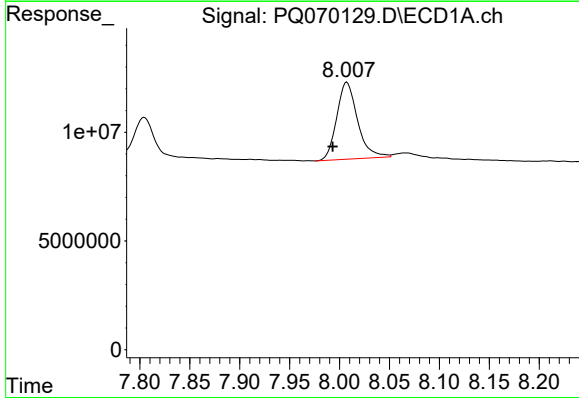
R.T.: 7.696 min  
 Delta R.T.: 0.013 min  
 Response: 2753333  
 Conc: 4.08 ng/ml

Instrument :  
 ECD\_Q  
 ClientSampleId :



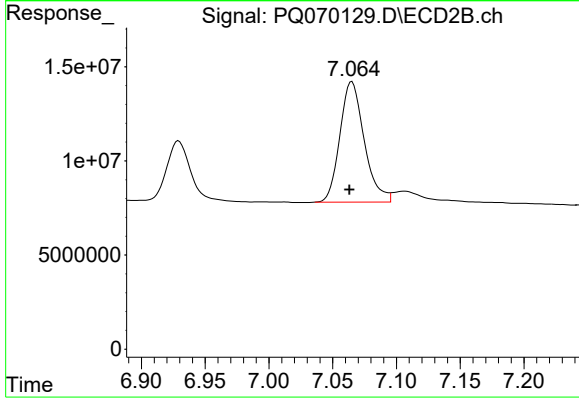
#43 AR-1268-3

R.T.: 6.777 min  
 Delta R.T.: 0.000 min  
 Response: 4893894  
 Conc: 5.19 ng/ml



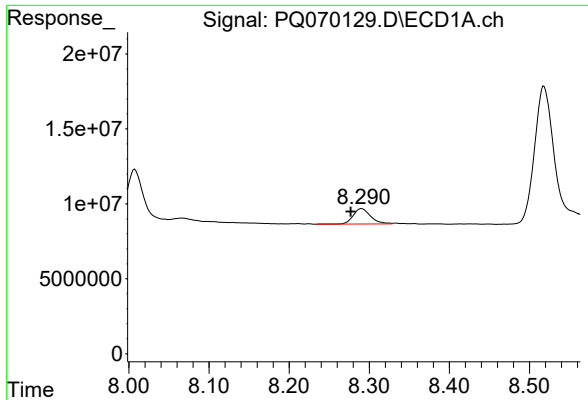
#44 AR-1268-4

R.T.: 8.007 min  
 Delta R.T.: 0.014 min  
 Response: 51508121  
 Conc: 204.83 ng/ml



#44 AR-1268-4

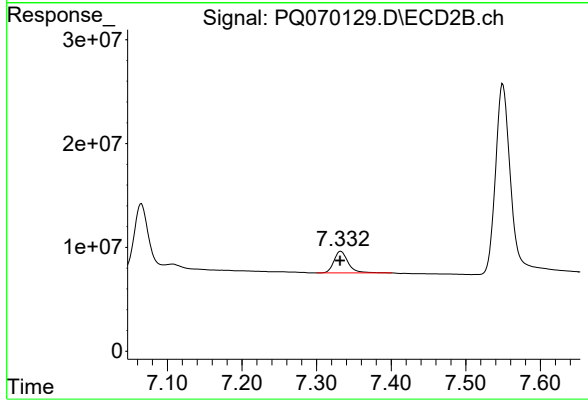
R.T.: 7.065 min  
 Delta R.T.: 0.002 min  
 Response: 85196592  
 Conc: 225.18 ng/ml



#45 AR-1268-5

R.T.: 8.290 min  
Delta R.T.: 0.014 min  
Response: 15468238  
Conc: 8.35 ng/ml

Instrument :  
ECD\_Q  
ClientSampleId :



#45 AR-1268-5

R.T.: 7.332 min  
Delta R.T.: 0.000 min  
Response: 27661230  
Conc: 10.22 ng/ml