

Data Path : Z:\pestpcbsrv\HPCHEM1\ECD_Q\Data\PQ041125\
 Data File : PQ070192.D
 Signal(s) : Signal #1: ECD1A.ch Signal #2: ECD2B.ch
 Acq On : 11 Apr 2025 11:43
 Operator : YP\AJ
 Sample : AR1248ICC750
 Misc :
 ALS Vial : 16 Sample Multiplier: 1

Instrument :
 ECD_Q
 ClientSampleId :
 AR1248ICC750

Integration File signal 1: autoint1.e
 Integration File signal 2: autoint2.e
 Quant Time: Apr 11 12:21:56 2025
 Quant Method : Z:\pestpcbsrv\HPCHEM1\ECD_Q\Method\PQ041125.M
 Quant Title : GC EXTRACTABLES
 QLast Update : Fri Apr 11 12:15:08 2025
 Response via : Initial Calibration
 Integrator: ChemStation

Volume Inj. : 2 µl
 Signal #1 Phase : ZB-MR2 Signal #2 Phase: ZB-MR2
 Signal #1 Info : 30Mx0.32mmx 0.50µ Signal #2 Info : 30M x 0.32mm x 0.25µm

Compound	RT#1	RT#2	Resp#1	Resp#2	ng/ml	ng/ml

System Monitoring Compounds						
1) SA Tetrachlo...	3.404	2.782	510.4E6	508.1E6	75.091	75.161
2) SA Decachlor...	8.502	7.543	346.4E6	540.6E6	74.990	74.815
Target Compounds						
21) L5 AR-1248-1	4.484	3.783	111.7E6	115.2E6	747.499	753.388
22) L5 AR-1248-2	4.747	4.007	154.5E6	173.5E6	750.731	748.898
23) L5 AR-1248-3	4.935	4.044	185.5E6	168.2E6	747.188	746.093
24) L5 AR-1248-4	5.322	4.202	203.7E6	207.8E6	749.976	747.432
25) L5 AR-1248-5	5.356	4.577	194.6E6	208.1E6	730.044	748.004

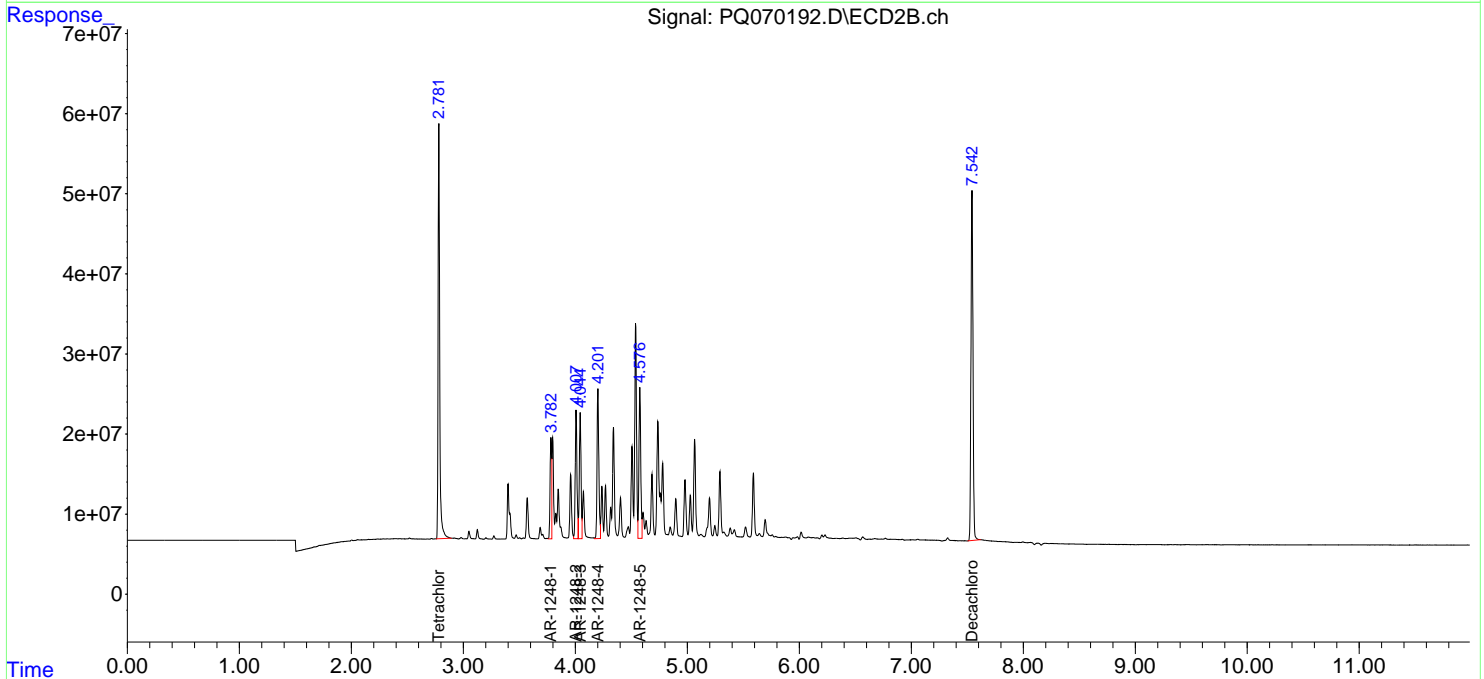
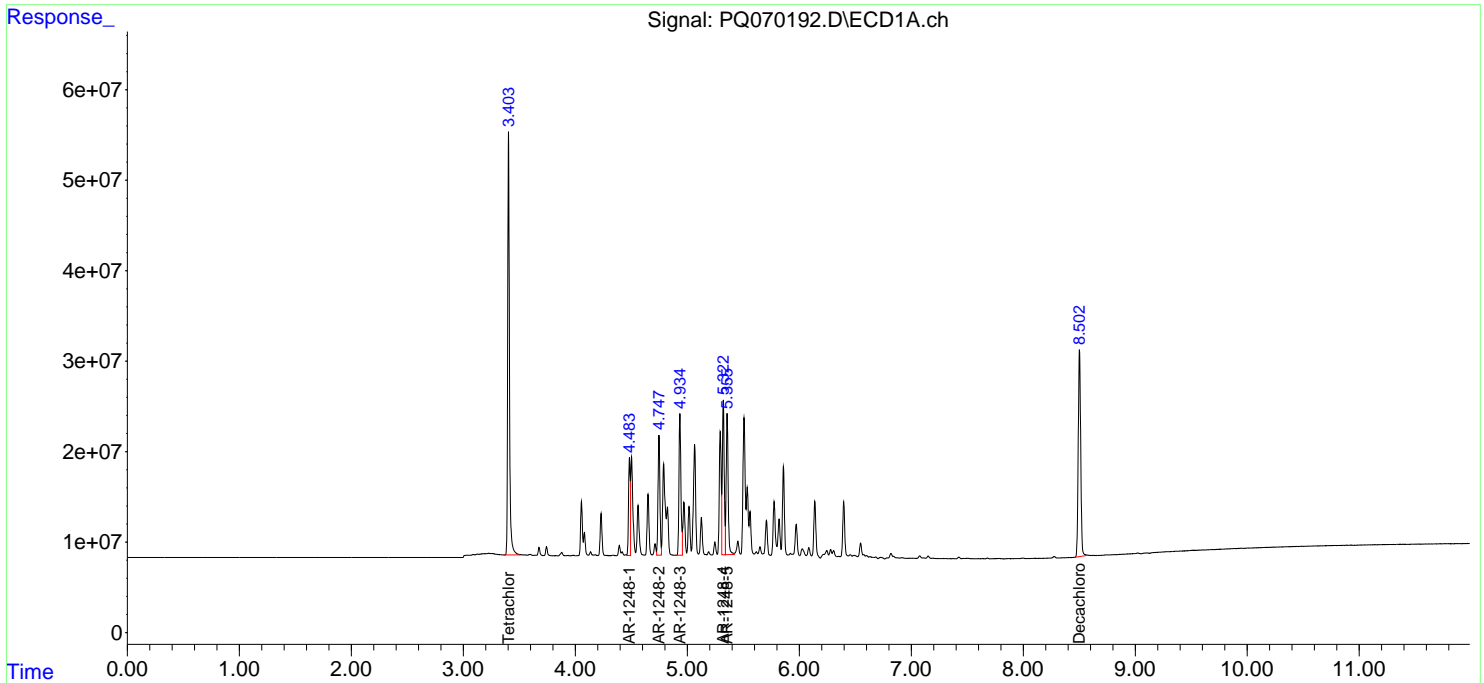
(f)=RT Delta > 1/2 Window (#)=Amounts differ by > 25% (m)=manual int.

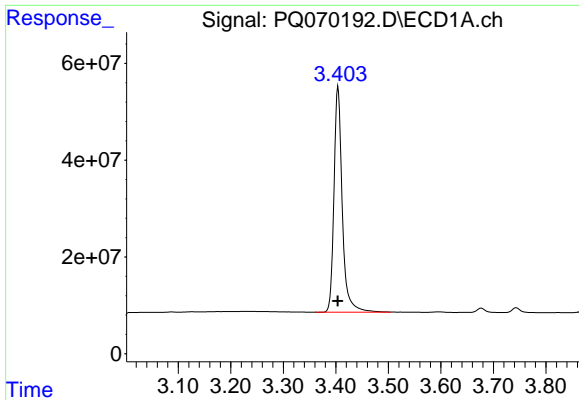
Data Path : Z:\pestpcbsrv\HPCHEM1\ECD_Q\Data\PQ041125\
 Data File : PQ070192.D
 Signal(s) : Signal #1: ECD1A.ch Signal #2: ECD2B.ch
 Acq On : 11 Apr 2025 11:43
 Operator : YP\AJ
 Sample : AR1248ICC750
 Misc :
 ALS Vial : 16 Sample Multiplier: 1

Instrument :
 ECD_Q
 ClientSampleId :
 AR1248ICC750

Integration File signal 1: autoint1.e
 Integration File signal 2: autoint2.e
 Quant Time: Apr 11 12:21:56 2025
 Quant Method : Z:\pestpcbsrv\HPCHEM1\ECD_Q\Method\PQ041125.M
 Quant Title : GC EXTRACTABLES
 QLast Update : Fri Apr 11 12:15:08 2025
 Response via : Initial Calibration
 Integrator: ChemStation

Volume Inj. : 2 µl
 Signal #1 Phase : ZB-MR1 Signal #2 Phase: ZB-MR2
 Signal #1 Info : 30Mx0.32mmx 0.50µ Signal #2 Info : 30M x 0.32mm x 0.25µm

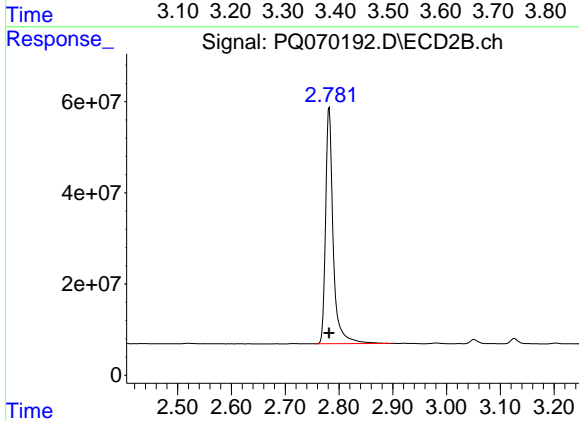




#1 Tetrachloro-m-xylene

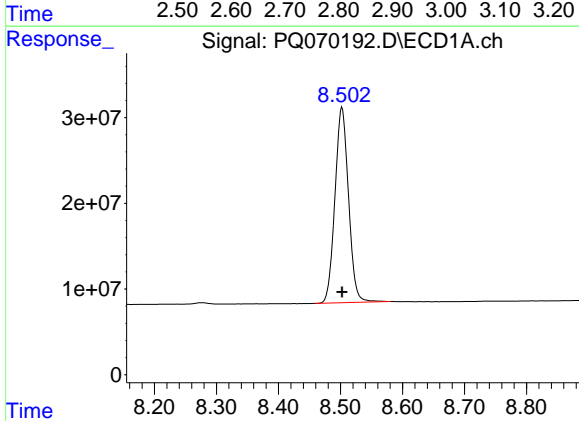
R.T.: 3.404 min
Delta R.T.: 0.000 min
Response: 510380048
Conc: 75.09 ng/ml

Instrument :
ECD_Q
ClientSampleId :
AR1248ICC750



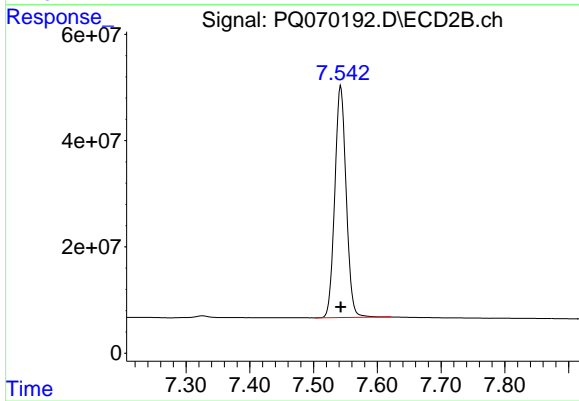
#1 Tetrachloro-m-xylene

R.T.: 2.782 min
Delta R.T.: 0.000 min
Response: 508094508
Conc: 75.16 ng/ml



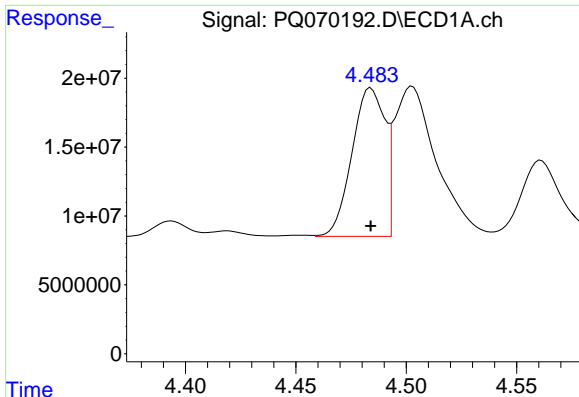
#2 Decachlorobiphenyl

R.T.: 8.502 min
Delta R.T.: 0.000 min
Response: 346383629
Conc: 74.99 ng/ml



#2 Decachlorobiphenyl

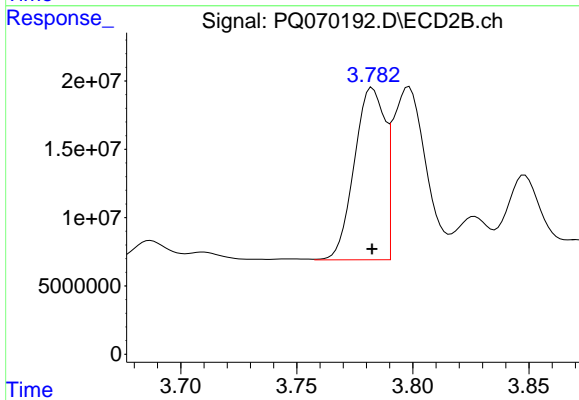
R.T.: 7.543 min
Delta R.T.: 0.000 min
Response: 540638035
Conc: 74.81 ng/ml



#21 AR-1248-1

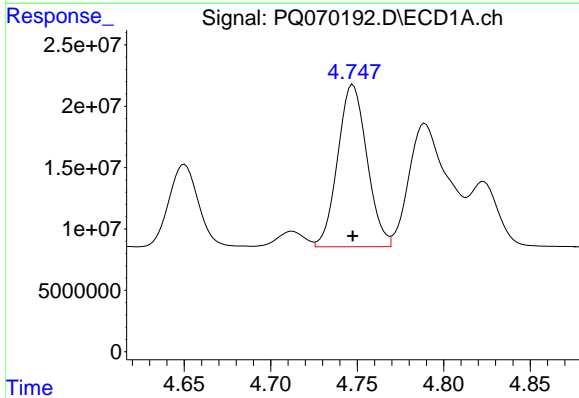
R.T.: 4.484 min
 Delta R.T.: 0.000 min
 Response: 111651913
 Conc: 747.50 ng/ml

Instrument :
 ECD_Q
 ClientSampleId :
 AR1248ICC750



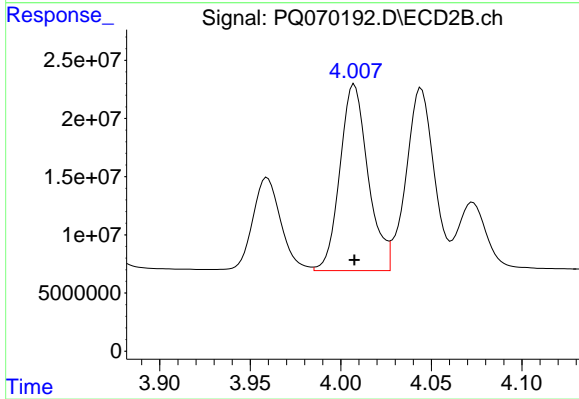
#21 AR-1248-1

R.T.: 3.783 min
 Delta R.T.: 0.000 min
 Response: 115197284
 Conc: 753.39 ng/ml



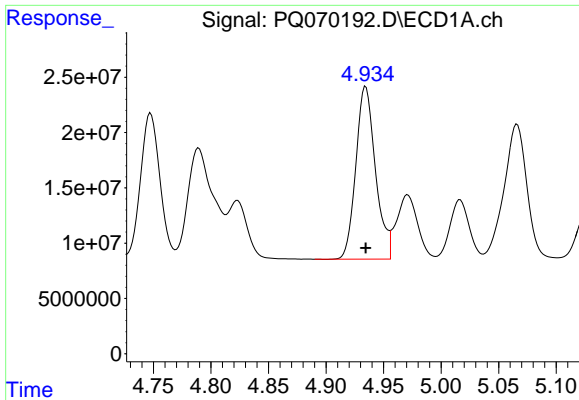
#22 AR-1248-2

R.T.: 4.747 min
 Delta R.T.: 0.000 min
 Response: 154539236
 Conc: 750.73 ng/ml



#22 AR-1248-2

R.T.: 4.007 min
 Delta R.T.: 0.000 min
 Response: 173513747
 Conc: 748.90 ng/ml

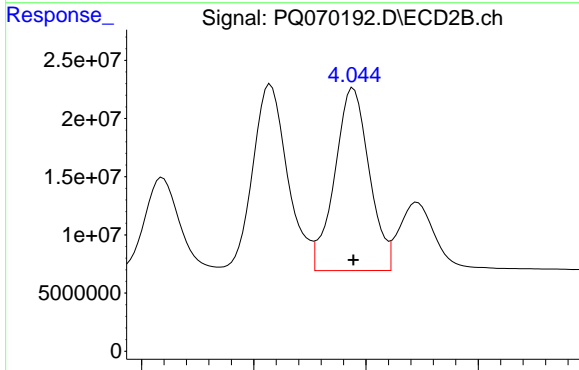


#23 AR-1248-3

R.T.: 4.935 min
 Delta R.T.: 0.000 min
 Response: 185523404
 Conc: 747.19 ng/ml

Instrument :
 ECD_Q
 ClientSampleId :
 AR1248ICC750

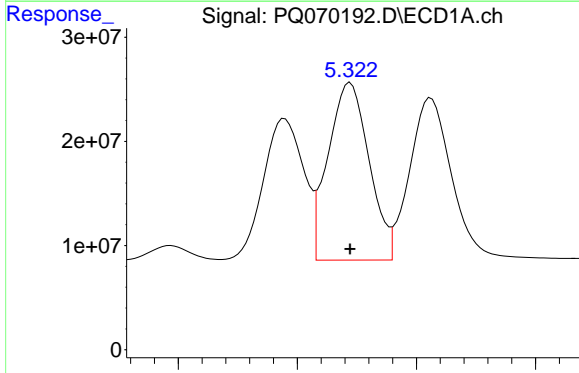
Time 4.75 4.80 4.85 4.90 4.95 5.00 5.05 5.10



#23 AR-1248-3

R.T.: 4.044 min
 Delta R.T.: 0.000 min
 Response: 168170812
 Conc: 746.09 ng/ml

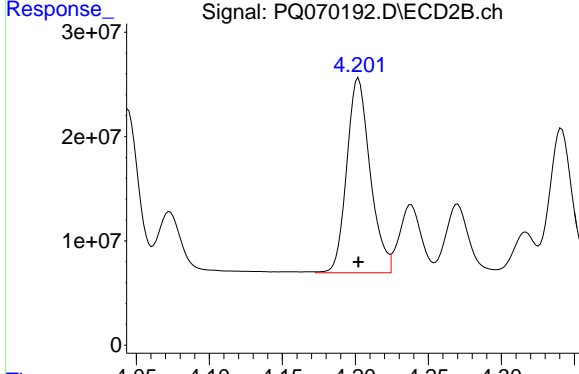
Time 3.95 4.00 4.05 4.10



#24 AR-1248-4

R.T.: 5.322 min
 Delta R.T.: 0.000 min
 Response: 203650379
 Conc: 749.98 ng/ml

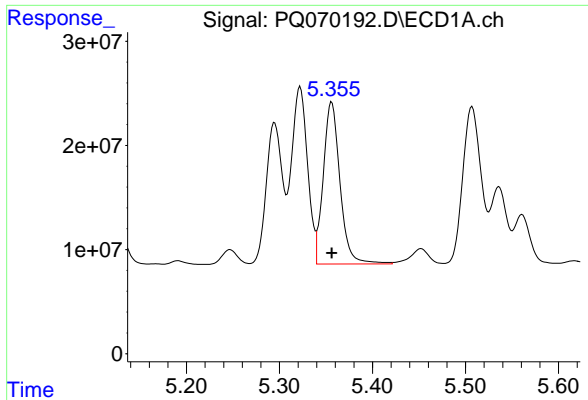
Time 5.25 5.30 5.35 5.40



#24 AR-1248-4

R.T.: 4.202 min
 Delta R.T.: 0.000 min
 Response: 207835859
 Conc: 747.43 ng/ml

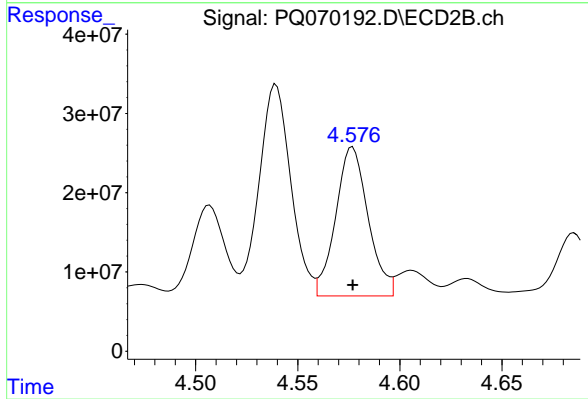
Time 4.05 4.10 4.15 4.20 4.25 4.30



#25 AR-1248-5

R.T.: 5.356 min
 Delta R.T.: 0.000 min
 Response: 194625044
 Conc: 730.04 ng/ml

Instrument :
 ECD_Q
 ClientSampleId :
 AR1248ICC750



#25 AR-1248-5

R.T.: 4.577 min
 Delta R.T.: 0.000 min
 Response: 208128426
 Conc: 748.00 ng/ml