

Data Path : Z:\pestpcbsrv\HPCHEM1\ECD_Q\Data\PQ041519\
 Data File : PQ039096.D
 Signal(s) : Signal #1: ECD1A.ch Signal #2: ECD2B.ch
 Acq On : 15 Apr 2019 16:15
 Operator : AJ\SJ
 Sample : AIBLK29
 Misc :
 ALS Vial : 2 Sample Multiplier: 1

Instrument :
 ECD_Q
 ClientSampleId :
 AIBLK29

Integration File signal 1: autoint1.e
 Integration File signal 2: autoint2.e
 Quant Time: Apr 16 02:16:23 2019
 Quant Method : Z:\pestpcbsrv\HPCHEM1\ECD_Q\Method\PQ040419CLP.M
 Quant Title : GC EXTRACTABLES
 QLast Update : Fri Apr 05 05:12:40 2019
 Response via : Initial Calibration
 Integrator: ChemStation

Volume Inj. : 1 µl
 Signal #1 Phase : ZB MR1 Signal #2 Phase: ZB MR2
 Signal #1 Info : 30Mx0.32mmx 0.5µm Signal #2 Info : 30M x 0.32mm x 0.25µm

Compound	RT#1	RT#2	Resp#1	Resp#2	ng/ml	ng/ml

System Monitoring Compounds						
1) SA Tetrachlo...	5.718	4.813	77045476	36923942	16.081	16.208
2) SA Decachlor...	12.125	10.575	204.0E6	120.6E6	30.844	35.425
Target Compounds						
3) L1 AR-1016-1	7.174	6.227	1788024	23630	6.612	0.159 #
4) L1 AR-1016-2	7.227	6.351	375118	1537965	0.927	7.091 #
5) L1 AR-1016-3	7.261	6.513	862255	3442146	3.369	30.523 #
6) L1 AR-1016-4	7.390	6.567	1068464	2316659	5.113	26.802 #
7) L1 AR-1016-5	7.657	6.840	604517	677681	2.808	5.248 #
8) L2 AR-1221-1	6.003	5.170	1605813	116670	27.702	4.015 #
9) L2 AR-1221-2	6.111	5.233	4939543	1197300	122.980	57.472 #
10) L2 AR-1221-3	6.202	0.000	6879028	0	48.724	N.D. #
11) L3 AR-1232-1	6.202	0.000	6879028	0	70.938	N.D. #
12) L3 AR-1232-2	6.874	6.351	570645	1537965	10.181	26.428 #
13) L3 AR-1232-3	7.227	6.513	375118	3442146	3.519	113.271 #
14) L3 AR-1232-4	7.390	6.656	1068464	136398	19.306	4.882 #
15) L3 AR-1232-5	7.470	6.840	512489	677681	13.140	20.657 #
16) L4 AR-1242-1	7.174	6.227	1788024	23630	11.717	0.273 #
17) L4 AR-1242-2	7.227	6.351	375118	1537965	1.668	12.332 #
18) L4 AR-1242-3	7.261	6.513	862255	3442146	6.086	51.356 #
19) L4 AR-1242-4	7.390	6.656	1068464	136398	9.235	2.019 #
20) L4 AR-1242-5	8.199	7.243	202811	6026012	1.494	63.107 #
21) L5 AR-1248-1	7.174	6.227	1788024	23630	16.963	0.392 #
22) L5 AR-1248-2	7.470	6.567	512489	2316659	3.423	27.378 #
23) L5 AR-1248-3	7.657	6.656	604517	136398	3.307	1.536 #
24) L5 AR-1248-4	8.132	6.840	1310860	677681	6.451	5.911
25) L5 AR-1248-5	8.199	7.243	202811	6026012	0.999	52.340 #
26) L6 AR-1254-1	8.132	7.243	1310860	6026012	6.075	32.794 #
27) L6 AR-1254-2	8.385	7.413	1570247	1285518	4.635	7.942 #
28) L6 AR-1254-3	8.779	7.821	1005616	4354992	2.706	15.414 #
29) L6 AR-1254-4	9.097	0.000	3498341	0	13.718	N.D. #
30) L6 AR-1254-5	9.466	8.595	1383901	145231	4.643	0.590 #
31) L7 AR-1260-1	8.967	7.958	1540896	2047103	3.221	6.758 #
32) L7 AR-1260-2	9.211	8.181	3353837	979619	5.905	2.645 #
33) L7 AR-1260-3	9.585	0.000	4849172	0	11.130	N.D. #
34) L7 AR-1260-4	9.846	8.911	4543678	696954	8.853	2.414 #
35) L7 AR-1260-5	10.159	9.096	1326890	283487	1.278	0.400 #
36) L8 AR-1262-1	9.585	8.595	4849172	145231	13.054	0.555 #
37) L8 AR-1262-2	10.159	9.096	1326890	283487	2.007	0.593 #
38) L8 AR-1262-3	10.532	9.406	577463	838251	1.278	4.317 #
39) L8 AR-1262-4	10.646	9.454	843345	165580	2.351	0.450 #
40) L8 AR-1262-5	11.352	9.979	659310	467257	2.650	3.093
41) L9 AR-1268-1	10.532	9.406	577463	838251	0.387	0.830 #

Data Path : Z:\pestpcbsrv\HPCHEM1\ECD_Q\Data\PQ041519\
 Data File : PQ039096.D
 Signal(s) : Signal #1: ECD1A.ch Signal #2: ECD2B.ch
 Acq On : 15 Apr 2019 16:15
 Operator : AJ\SJ
 Sample : AIBLK29
 Misc :
 ALS Vial : 2 Sample Multiplier: 1

Instrument :
 ECD_Q
 ClientSampleId :
 AIBLK29

Integration File signal 1: autoint1.e
 Integration File signal 2: autoint2.e
 Quant Time: Apr 16 02:16:23 2019
 Quant Method : Z:\pestpcbsrv\HPCHEM1\ECD_Q\Method\PQ040419CLP.M
 Quant Title : GC EXTRACTABLES
 QLast Update : Fri Apr 05 05:12:40 2019
 Response via : Initial Calibration
 Integrator: ChemStation

Volume Inj. : 1 µl
 Signal #1 Phase : ZB MR1 Signal #2 Phase: ZB MR2
 Signal #1 Info : 30Mx0.32mmx 0.5µm Signal #2 Info : 30M x 0.32mm x 0.25µm

	Compound	RT#1	RT#2	Resp#1	Resp#2	ng/ml	ng/ml
42)	L9 AR-1268-2	10.646	9.454	843345	165580	0.610	0.178 #
43)	L9 AR-1268-3	10.847	9.662	2432402	1323250	1.985	1.674
44)	L9 AR-1268-4	11.352	9.979	659310	467257	1.314	1.503
45)	L9 AR-1268-5	11.761	10.294	3321621	1180029	0.787	0.474 #

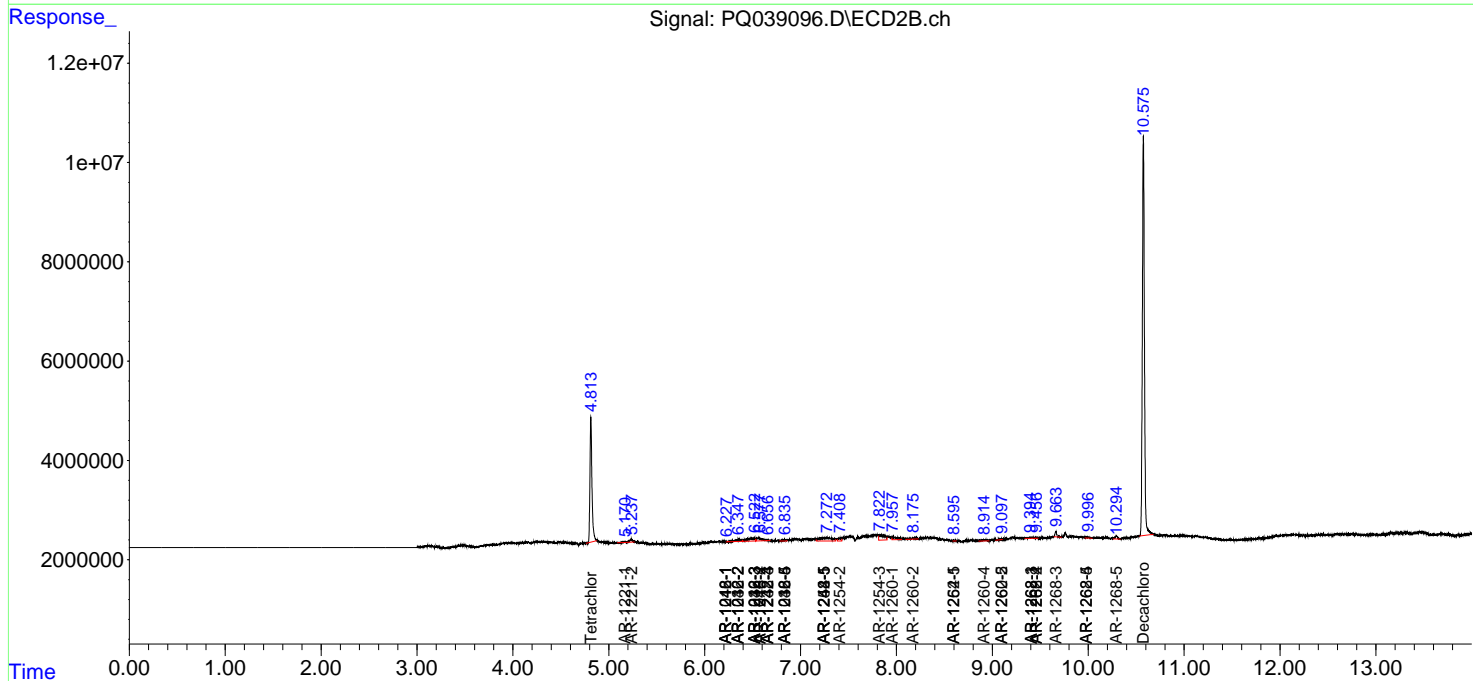
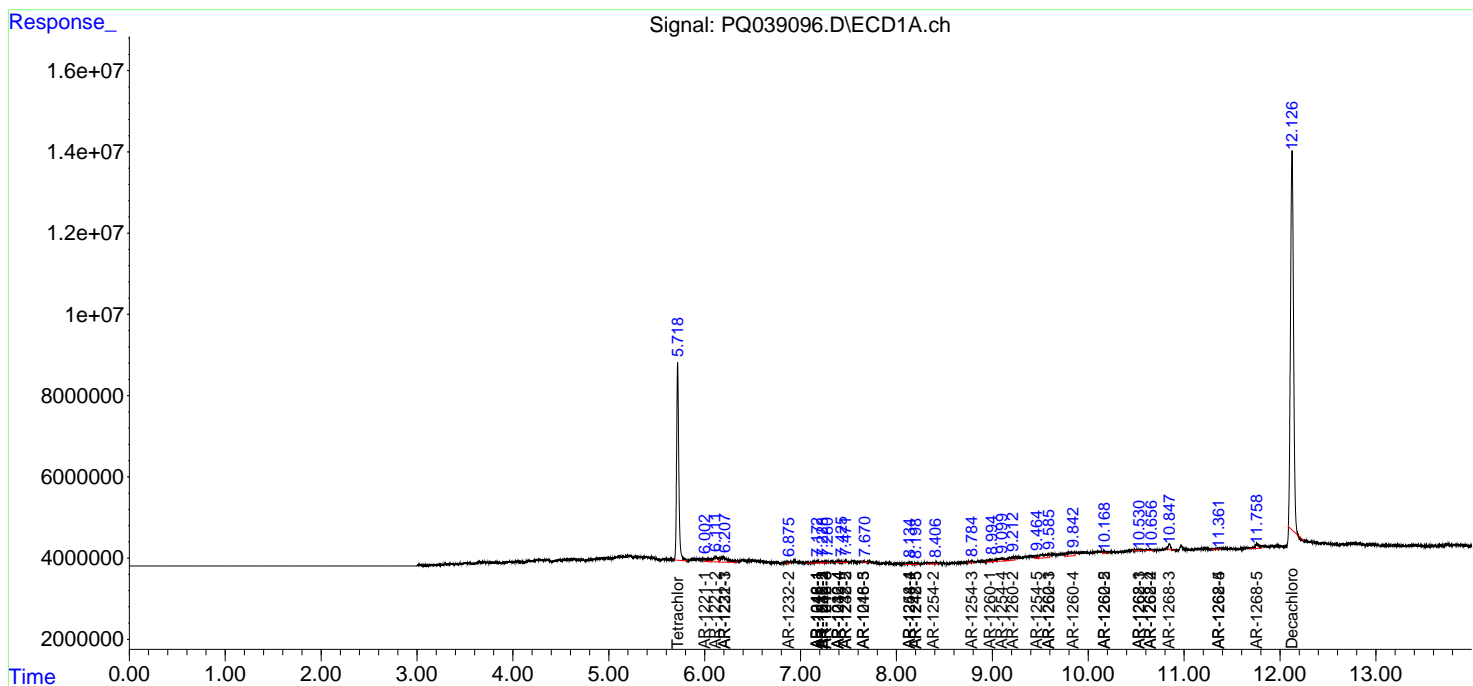
(f)=RT Delta > 1/2 Window (#)=Amounts differ by > 25% (m)=manual int.

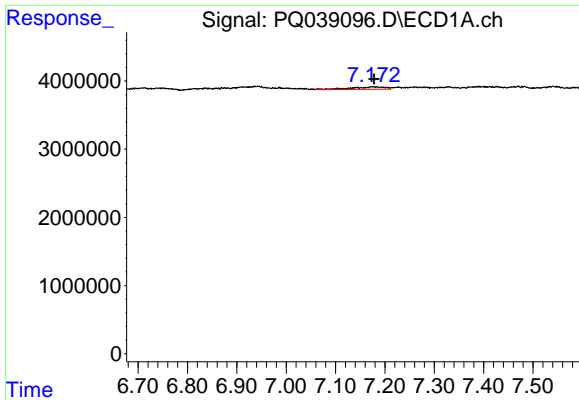
Data Path : Z:\pestpcbsrv\HPCHEM1\ECD_Q\Data\PQ041519\
 Data File : PQ039096.D
 Signal(s) : Signal #1: ECD1A.ch Signal #2: ECD2B.ch
 Acq On : 15 Apr 2019 16:15
 Operator : AJ\SJ
 Sample : AIBLK29
 Misc :
 ALS Vial : 2 Sample Multiplier: 1

Instrument :
 ECD_Q
 Client Sampled :
 AIBLK29

Integration File signal 1: autoint1.e
 Integration File signal 2: autoint2.e
 Quant Time: Apr 16 02:16:23 2019
 Quant Method : Z:\pestpcbsrv\HPCHEM1\ECD_Q\Method\PQ040419CLP.M
 Quant Title : GC EXTRACTABLES
 QLast Update : Fri Apr 05 05:12:40 2019
 Response via : Initial Calibration
 Integrator: ChemStation

Volume Inj. : 1 µl
 Signal #1 Phase : ZB MR1 Signal #2 Phase: ZB MR2
 Signal #1 Info : 30Mx0.32mmx 0.5µm Signal #2 Info : 30M x 0.32mm x 0.25µm

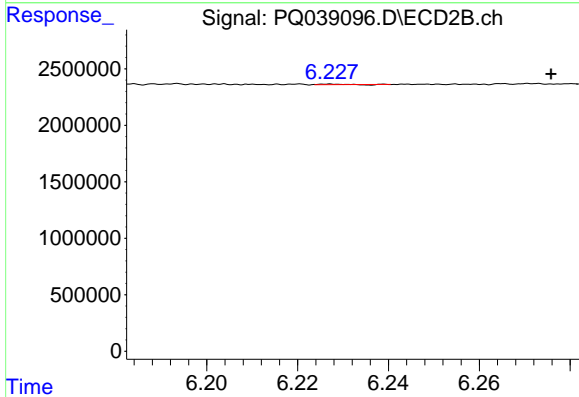




#3 AR-1016-1

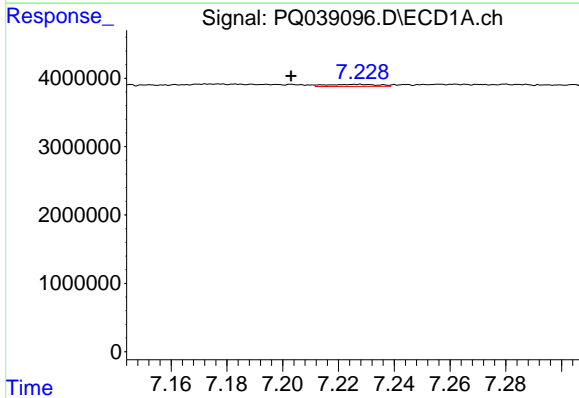
R.T.: 7.174 min
 Delta R.T.: -0.004 min
 Response: 1788024
 Conc: 6.61 ng/ml

Instrument :
 ECD_Q
 ClientSampled :
 AIBLK29



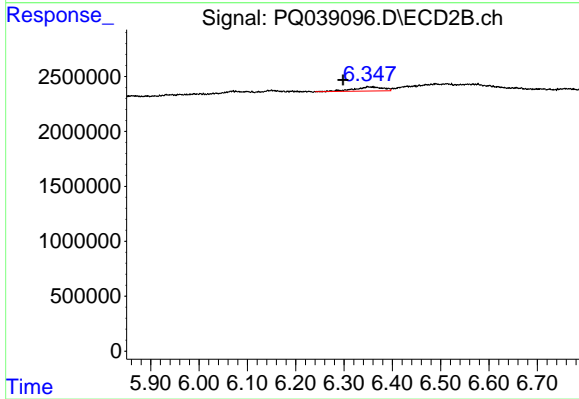
#3 AR-1016-1

R.T.: 6.227 min
 Delta R.T.: -0.049 min
 Response: 23630
 Conc: 0.16 ng/ml



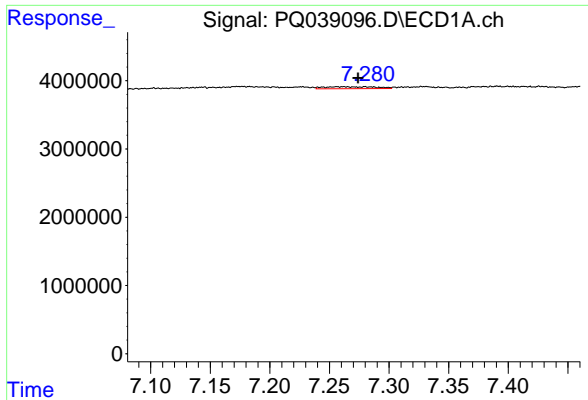
#4 AR-1016-2

R.T.: 7.227 min
 Delta R.T.: 0.024 min
 Response: 375118
 Conc: 0.93 ng/ml



#4 AR-1016-2

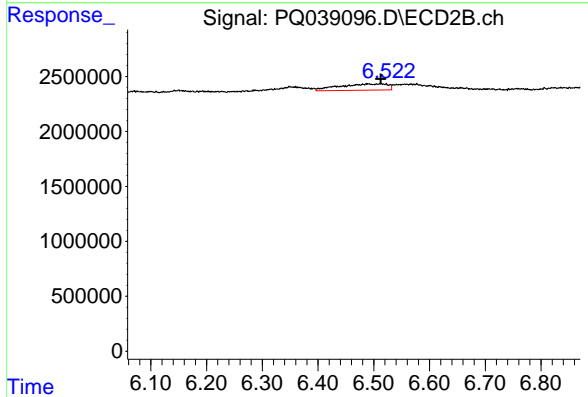
R.T.: 6.351 min
 Delta R.T.: 0.053 min
 Response: 1537965
 Conc: 7.09 ng/ml



#5 AR-1016-3

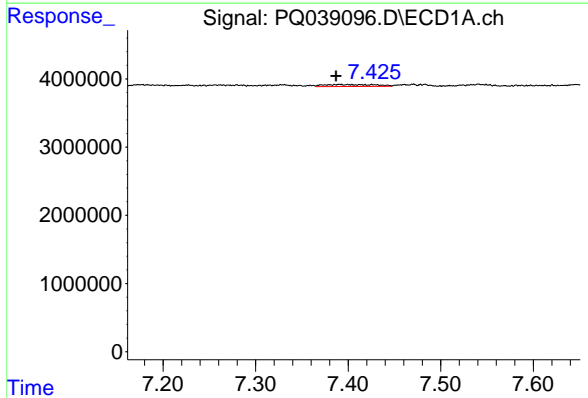
R.T.: 7.261 min
 Delta R.T.: -0.013 min
 Response: 862255
 Conc: 3.37 ng/ml

Instrument :
 ECD_Q
 ClientSampled :
 AIBLK29



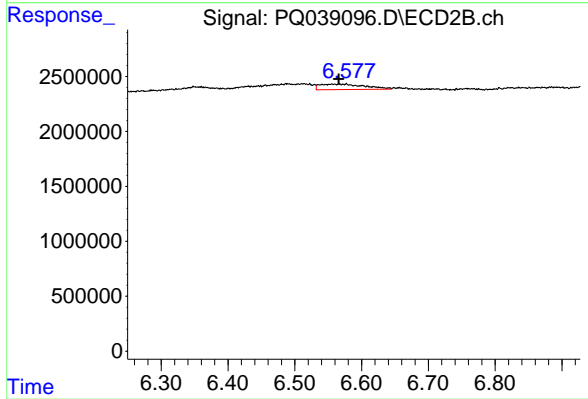
#5 AR-1016-3

R.T.: 6.513 min
 Delta R.T.: 0.000 min
 Response: 3442146
 Conc: 30.52 ng/ml



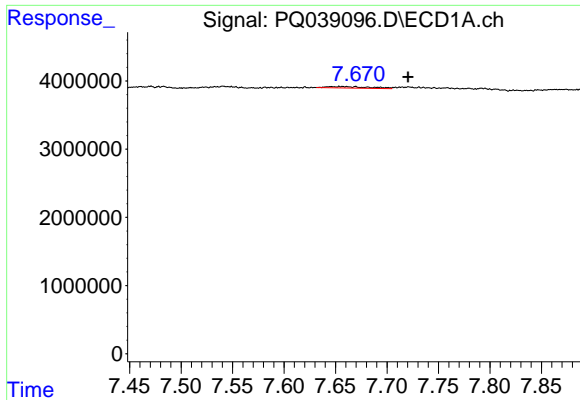
#6 AR-1016-4

R.T.: 7.390 min
 Delta R.T.: 0.003 min
 Response: 1068464
 Conc: 5.11 ng/ml



#6 AR-1016-4

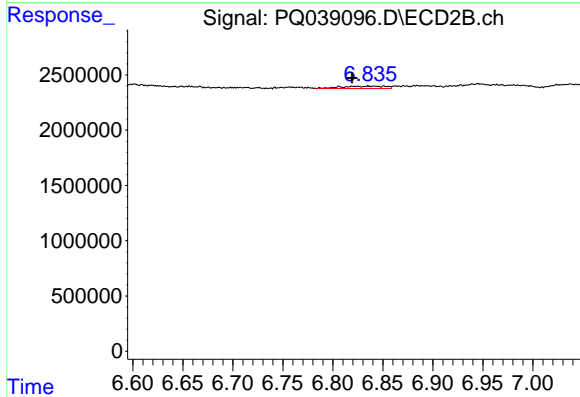
R.T.: 6.567 min
 Delta R.T.: 0.000 min
 Response: 2316659
 Conc: 26.80 ng/ml



#7 AR-1016-5

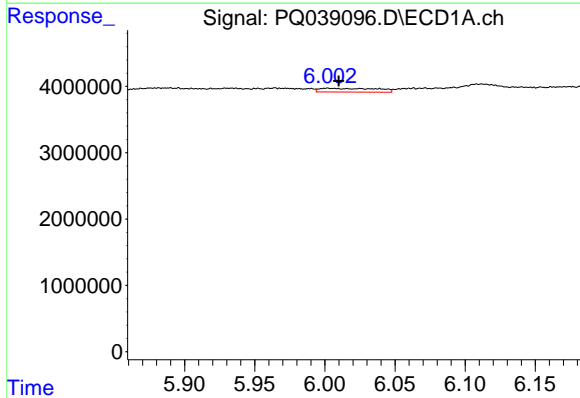
R.T.: 7.657 min
 Delta R.T.: -0.064 min
 Response: 604517
 Conc: 2.81 ng/ml

Instrument :
 ECD_Q
 ClientSampleId :
 AIBLK29



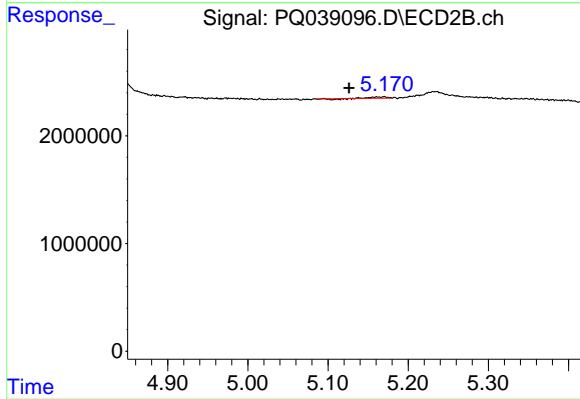
#7 AR-1016-5

R.T.: 6.840 min
 Delta R.T.: 0.021 min
 Response: 677681
 Conc: 5.25 ng/ml



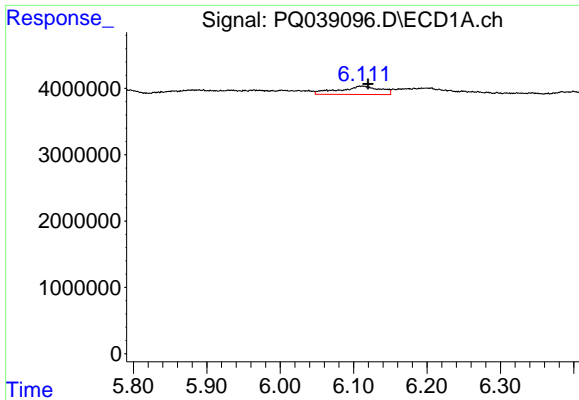
#8 AR-1221-1

R.T.: 6.003 min
 Delta R.T.: -0.007 min
 Response: 1605813
 Conc: 27.70 ng/ml



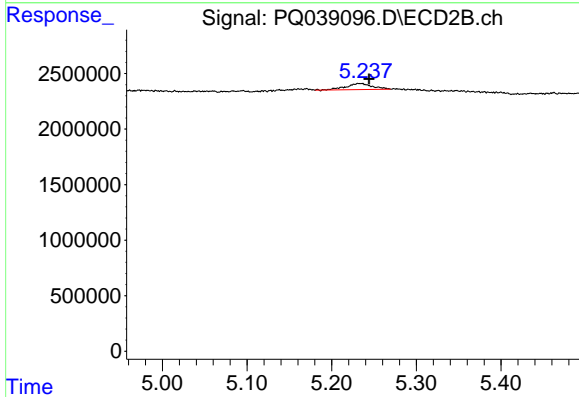
#8 AR-1221-1

R.T.: 5.170 min
 Delta R.T.: 0.043 min
 Response: 116670
 Conc: 4.01 ng/ml

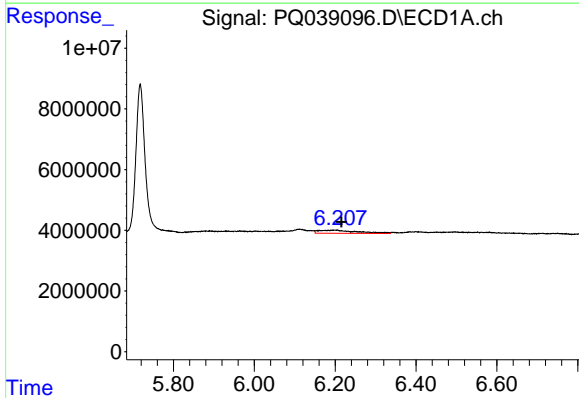


#9 AR-1221-2
 R.T.: 6.111 min
 Delta R.T.: -0.009 min
 Response: 4939543
 Conc: 122.98 ng/ml

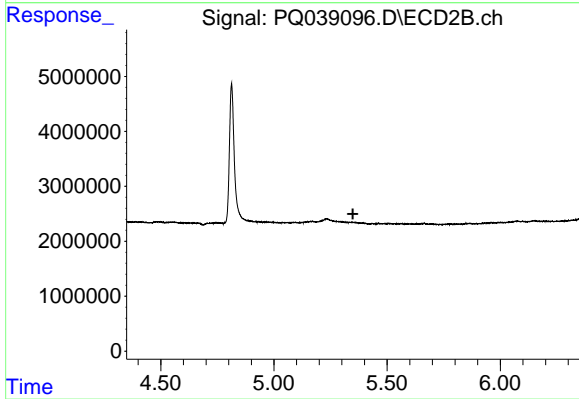
Instrument :
 ECD_Q
 ClientSampled :
 AIBLK29



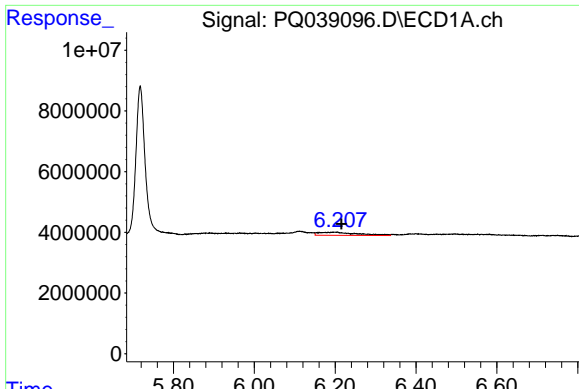
#9 AR-1221-2
 R.T.: 5.233 min
 Delta R.T.: -0.011 min
 Response: 1197300
 Conc: 57.47 ng/ml



#10 AR-1221-3
 R.T.: 6.202 min
 Delta R.T.: -0.014 min
 Response: 6879028
 Conc: 48.72 ng/ml

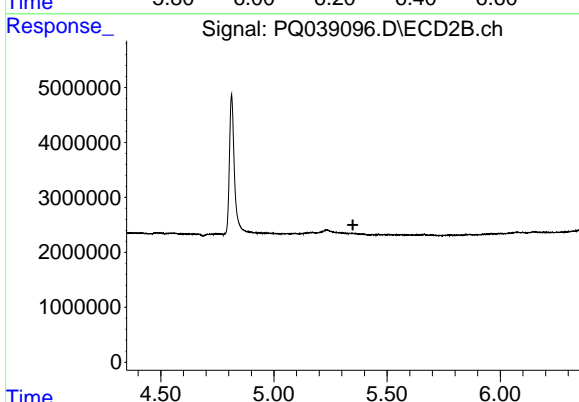


#10 AR-1221-3
 R.T.: 0.000 min
 Exp R.T. : 5.349 min
 Response: 0
 Conc: N.D.

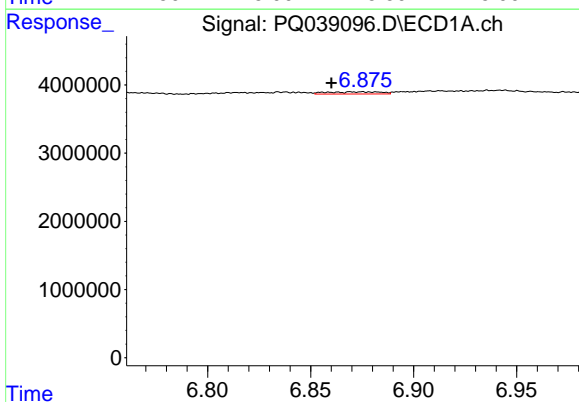


#11 AR-1232-1
 R.T.: 6.202 min
 Delta R.T.: -0.014 min
 Response: 6879028
 Conc: 70.94 ng/ml

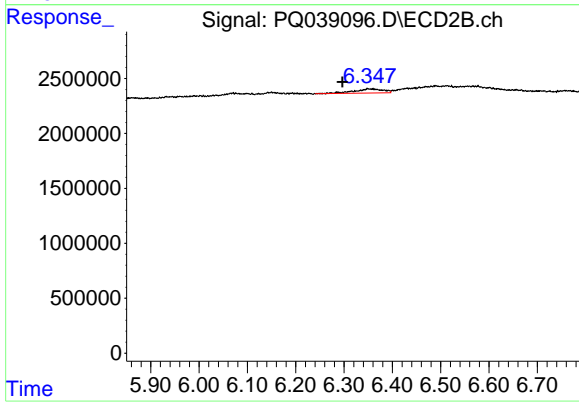
Instrument :
 ECD_Q
 ClientSampled :
 AIBLK29



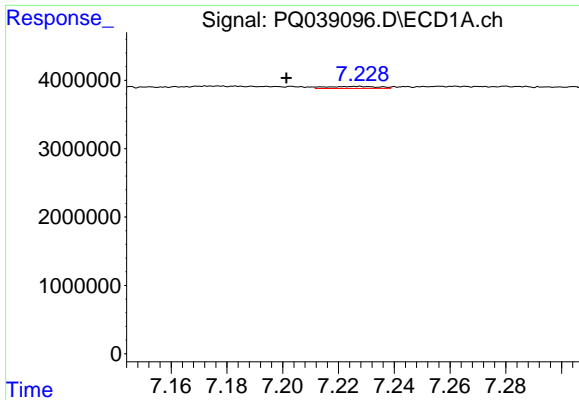
#11 AR-1232-1
 R.T.: 0.000 min
 Exp R.T. : 5.349 min
 Response: 0
 Conc: N.D.



#12 AR-1232-2
 R.T.: 6.874 min
 Delta R.T.: 0.014 min
 Response: 570645
 Conc: 10.18 ng/ml



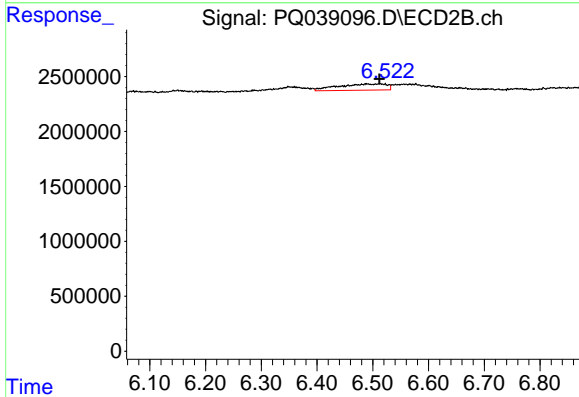
#12 AR-1232-2
 R.T.: 6.351 min
 Delta R.T.: 0.054 min
 Response: 1537965
 Conc: 26.43 ng/ml



#13 AR-1232-3

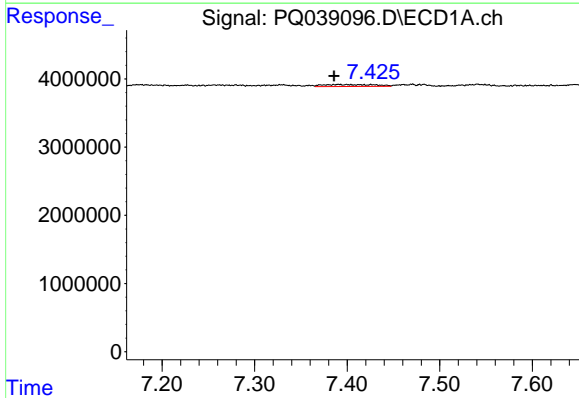
R.T.: 7.227 min
 Delta R.T.: 0.025 min
 Response: 375118
 Conc: 3.52 ng/ml

Instrument :
 ECD_Q
 ClientSampled :
 AIBLK29



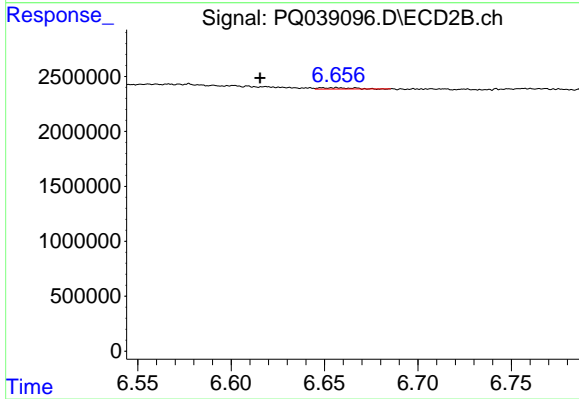
#13 AR-1232-3

R.T.: 6.513 min
 Delta R.T.: 0.001 min
 Response: 3442146
 Conc: 113.27 ng/ml



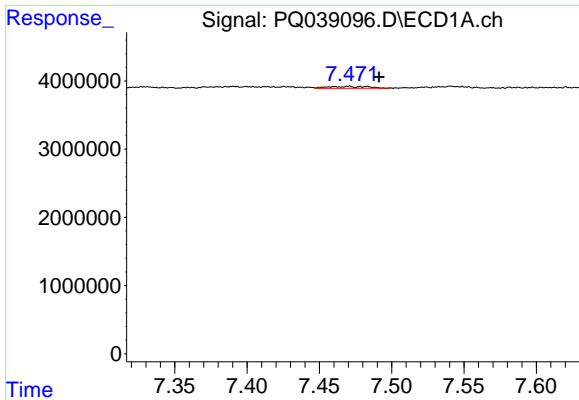
#14 AR-1232-4

R.T.: 7.390 min
 Delta R.T.: 0.004 min
 Response: 1068464
 Conc: 19.31 ng/ml



#14 AR-1232-4

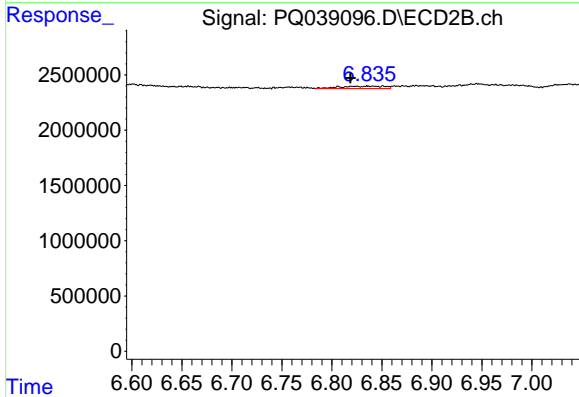
R.T.: 6.656 min
 Delta R.T.: 0.041 min
 Response: 136398
 Conc: 4.88 ng/ml



#15 AR-1232-5

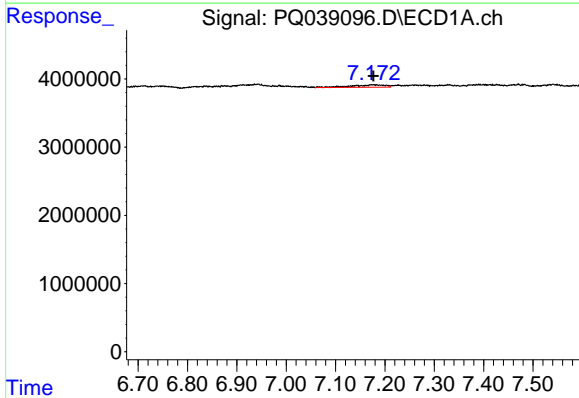
R.T.: 7.470 min
 Delta R.T.: -0.022 min
 Response: 512489
 Conc: 13.14 ng/ml

Instrument :
 ECD_Q
 ClientSampled :
 AIBLK29



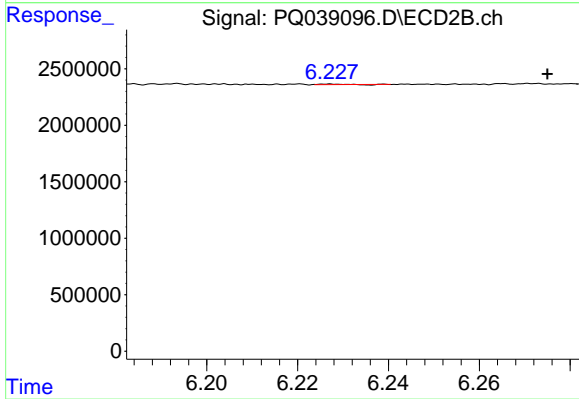
#15 AR-1232-5

R.T.: 6.840 min
 Delta R.T.: 0.022 min
 Response: 677681
 Conc: 20.66 ng/ml



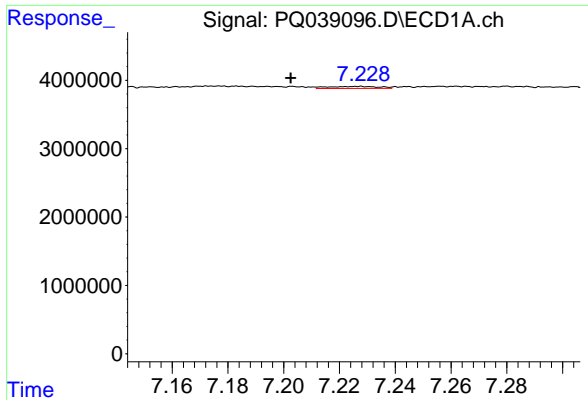
#16 AR-1242-1

R.T.: 7.174 min
 Delta R.T.: -0.002 min
 Response: 1788024
 Conc: 11.72 ng/ml



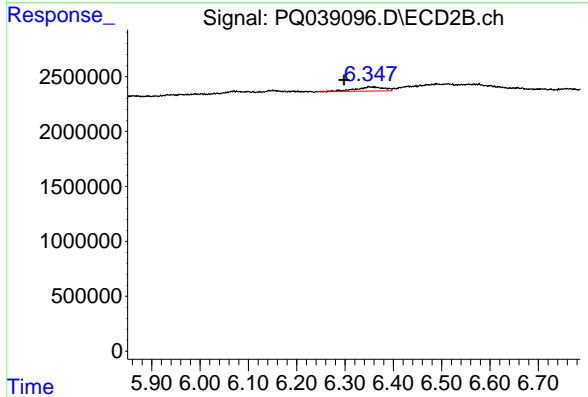
#16 AR-1242-1

R.T.: 6.227 min
 Delta R.T.: -0.048 min
 Response: 23630
 Conc: 0.27 ng/ml

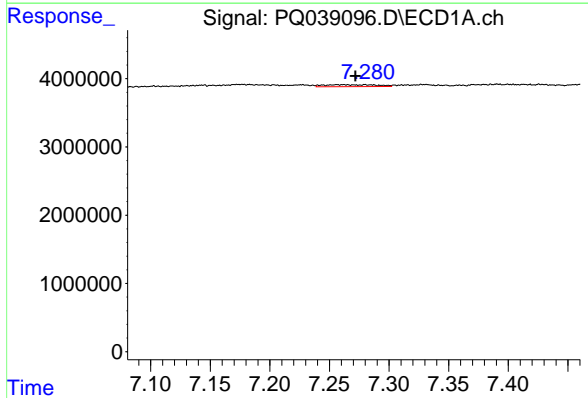


#17 AR-1242-2
 R.T.: 7.227 min
 Delta R.T.: 0.024 min
 Response: 375118
 Conc: 1.67 ng/ml

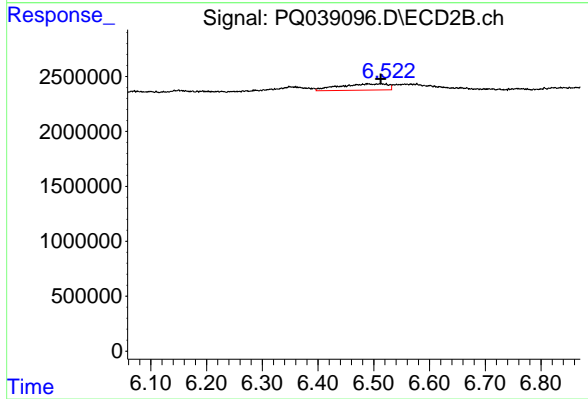
Instrument :
 ECD_Q
 ClientSampled :
 AIBLK29



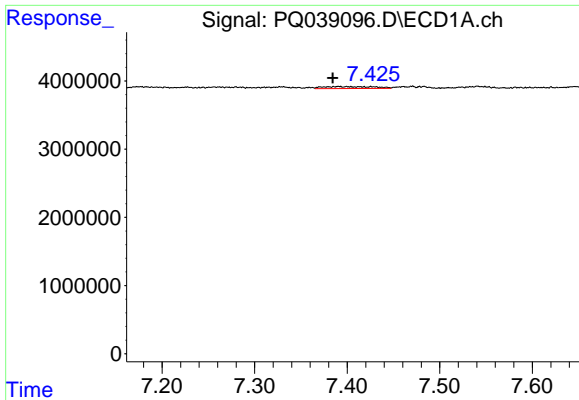
#17 AR-1242-2
 R.T.: 6.351 min
 Delta R.T.: 0.053 min
 Response: 1537965
 Conc: 12.33 ng/ml



#18 AR-1242-3
 R.T.: 7.261 min
 Delta R.T.: -0.011 min
 Response: 862255
 Conc: 6.09 ng/ml



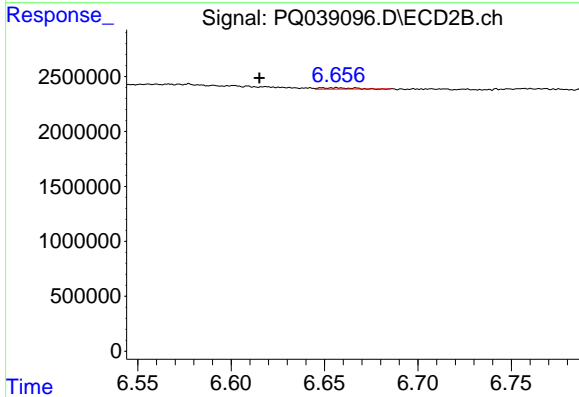
#18 AR-1242-3
 R.T.: 6.513 min
 Delta R.T.: 0.001 min
 Response: 3442146
 Conc: 51.36 ng/ml



#19 AR-1242-4

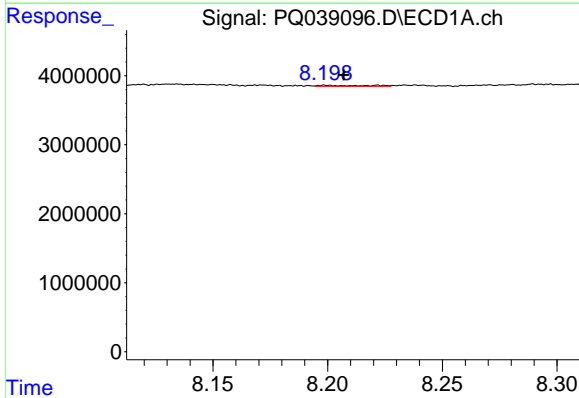
R.T.: 7.390 min
 Delta R.T.: 0.006 min
 Response: 1068464
 Conc: 9.23 ng/ml

Instrument :
 ECD_Q
 ClientSampled :
 AIBLK29



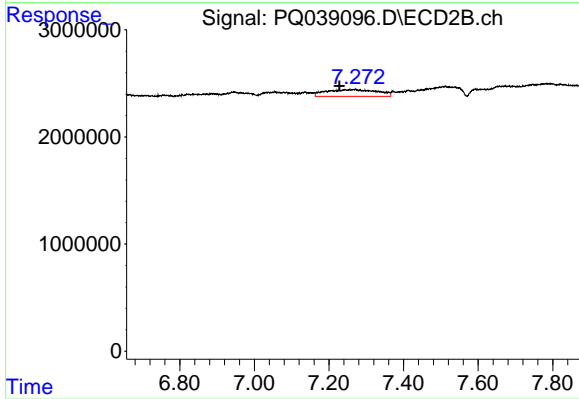
#19 AR-1242-4

R.T.: 6.656 min
 Delta R.T.: 0.041 min
 Response: 136398
 Conc: 2.02 ng/ml



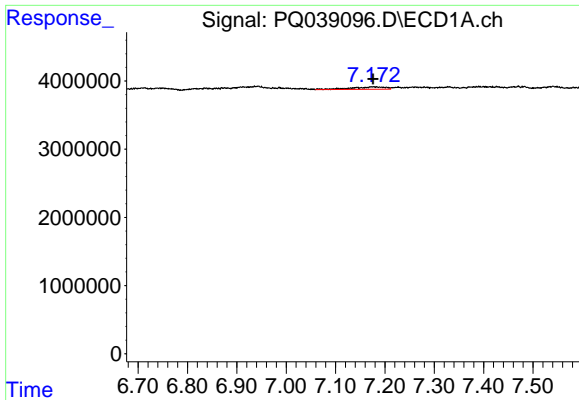
#20 AR-1242-5

R.T.: 8.199 min
 Delta R.T.: -0.008 min
 Response: 202811
 Conc: 1.49 ng/ml



#20 AR-1242-5

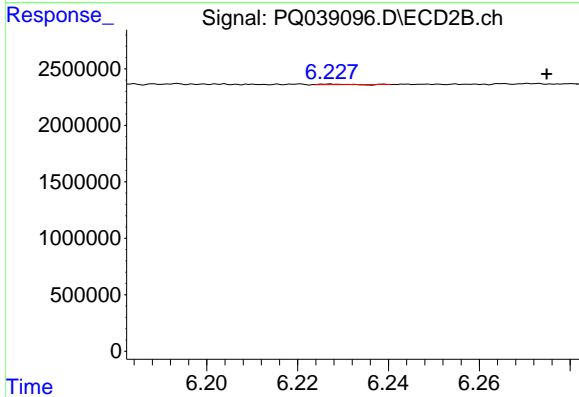
R.T.: 7.243 min
 Delta R.T.: 0.015 min
 Response: 6026012
 Conc: 63.11 ng/ml



#21 AR-1248-1

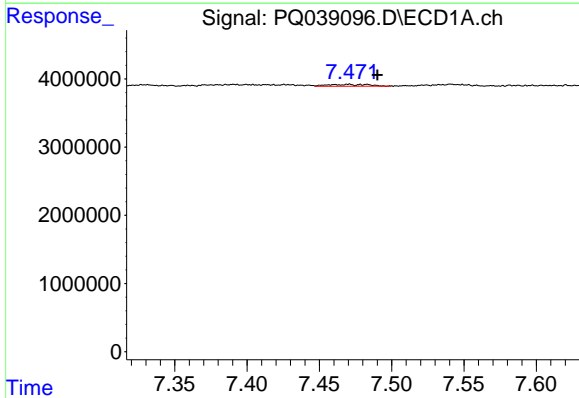
R.T.: 7.174 min
 Delta R.T.: -0.002 min
 Response: 1788024
 Conc: 16.96 ng/ml

Instrument :
 ECD_Q
 ClientSampled :
 AIBLK29



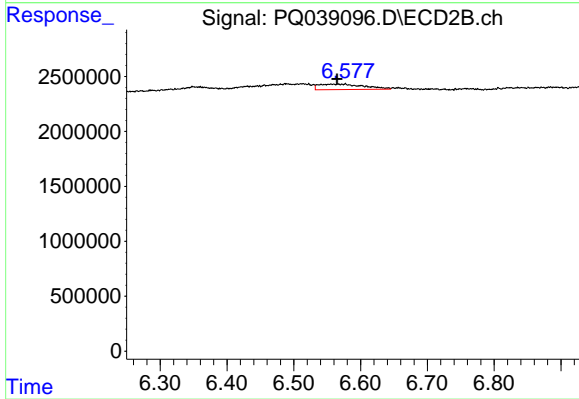
#21 AR-1248-1

R.T.: 6.227 min
 Delta R.T.: -0.048 min
 Response: 23630
 Conc: 0.39 ng/ml



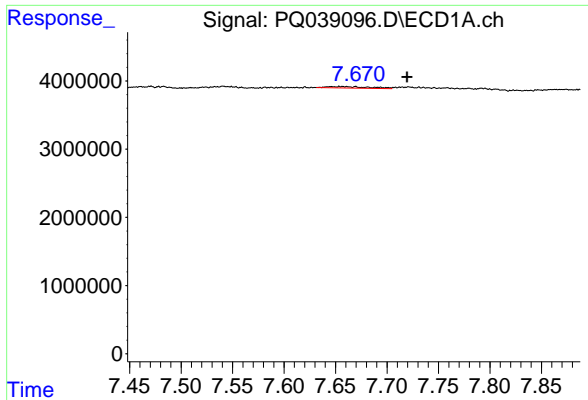
#22 AR-1248-2

R.T.: 7.470 min
 Delta R.T.: -0.021 min
 Response: 512489
 Conc: 3.42 ng/ml



#22 AR-1248-2

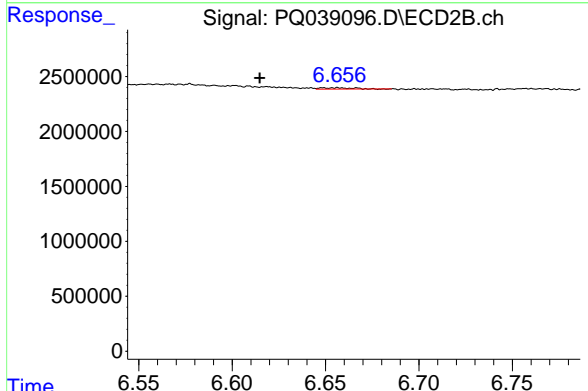
R.T.: 6.567 min
 Delta R.T.: 0.002 min
 Response: 2316659
 Conc: 27.38 ng/ml



#23 AR-1248-3

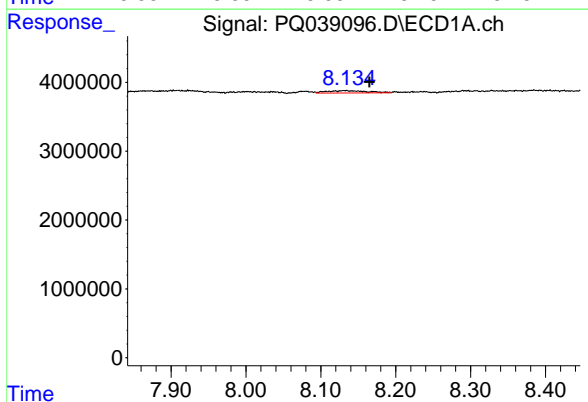
R.T.: 7.657 min
 Delta R.T.: -0.062 min
 Response: 604517
 Conc: 3.31 ng/ml

Instrument :
 ECD_Q
 ClientSampleId :
 AIBLK29



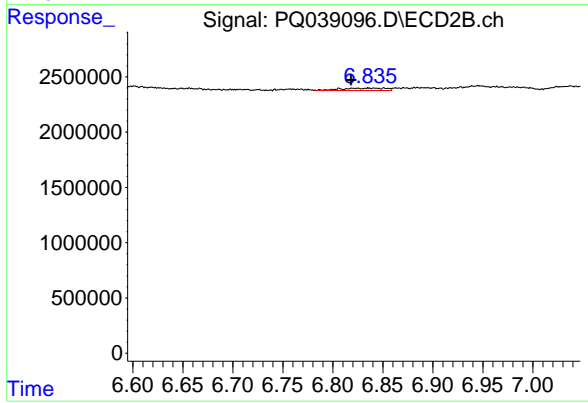
#23 AR-1248-3

R.T.: 6.656 min
 Delta R.T.: 0.041 min
 Response: 136398
 Conc: 1.54 ng/ml



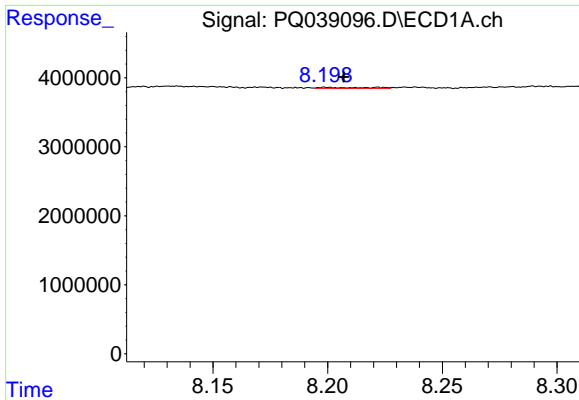
#24 AR-1248-4

R.T.: 8.132 min
 Delta R.T.: -0.033 min
 Response: 1310860
 Conc: 6.45 ng/ml



#24 AR-1248-4

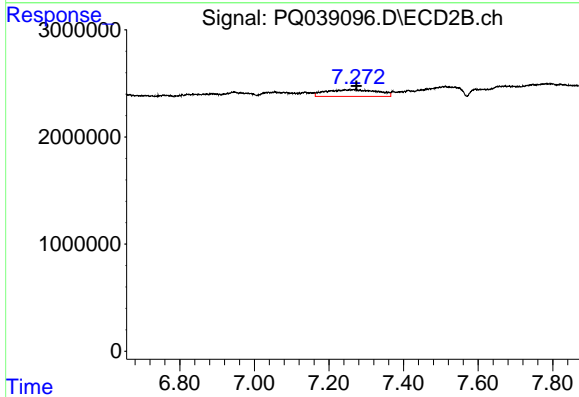
R.T.: 6.840 min
 Delta R.T.: 0.022 min
 Response: 677681
 Conc: 5.91 ng/ml



#25 AR-1248-5

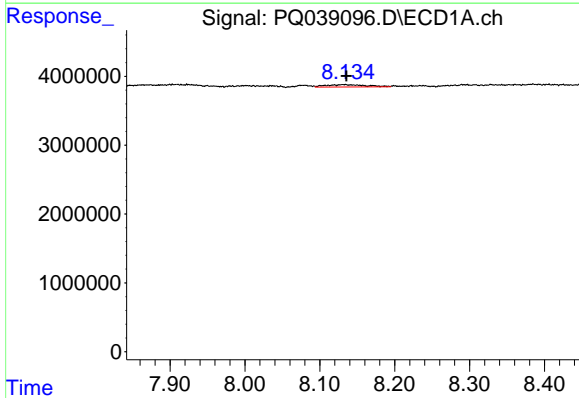
R.T.: 8.199 min
 Delta R.T.: -0.008 min
 Response: 202811
 Conc: 1.00 ng/ml

Instrument :
 ECD_Q
 ClientSampled :
 AIBLK29



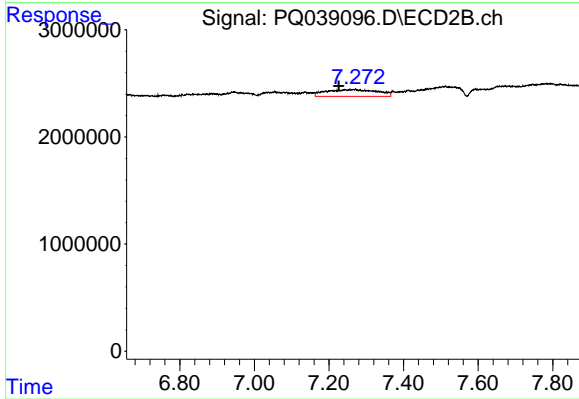
#25 AR-1248-5

R.T.: 7.243 min
 Delta R.T.: -0.030 min
 Response: 6026012
 Conc: 52.34 ng/ml



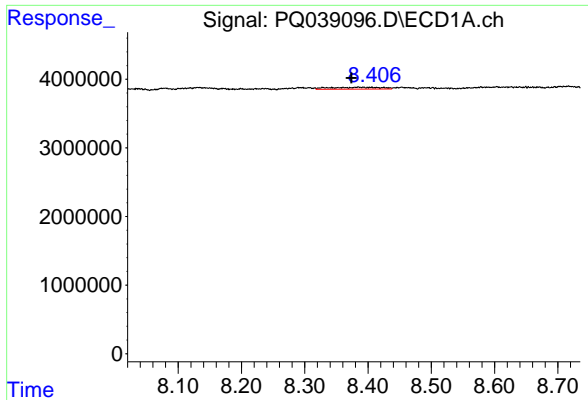
#26 AR-1254-1

R.T.: 8.132 min
 Delta R.T.: -0.003 min
 Response: 1310860
 Conc: 6.08 ng/ml



#26 AR-1254-1

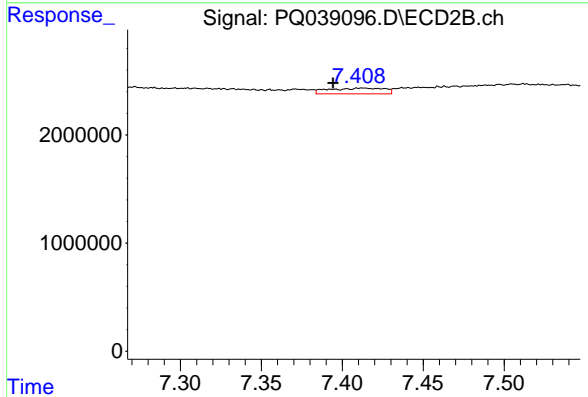
R.T.: 7.243 min
 Delta R.T.: 0.017 min
 Response: 6026012
 Conc: 32.79 ng/ml



#27 AR-1254-2

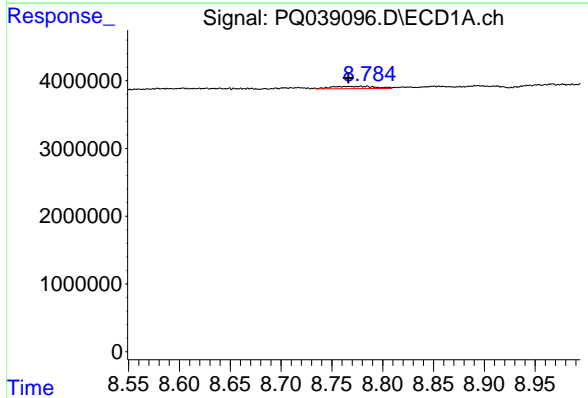
R.T.: 8.385 min
 Delta R.T.: 0.011 min
 Response: 1570247
 Conc: 4.64 ng/ml

Instrument :
 ECD_Q
 ClientSampleId :
 AIBLK29



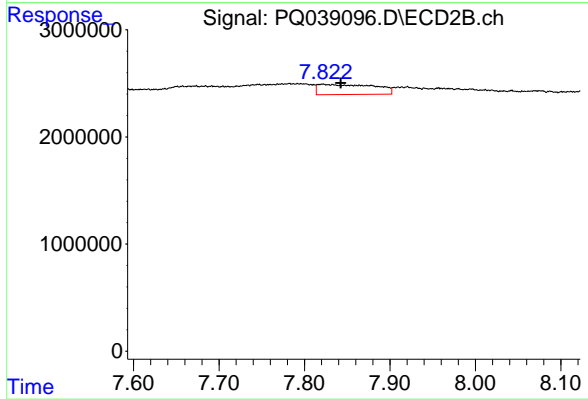
#27 AR-1254-2

R.T.: 7.413 min
 Delta R.T.: 0.019 min
 Response: 1285518
 Conc: 7.94 ng/ml



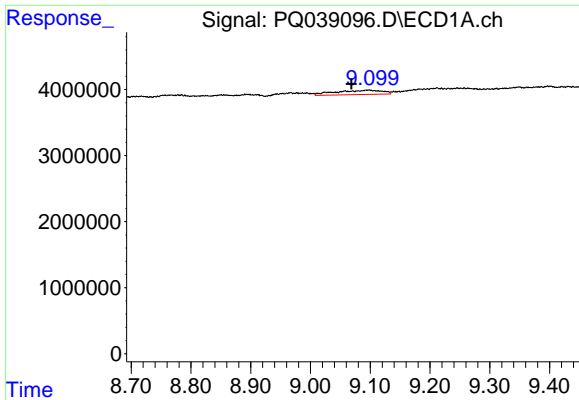
#28 AR-1254-3

R.T.: 8.779 min
 Delta R.T.: 0.013 min
 Response: 1005616
 Conc: 2.71 ng/ml



#28 AR-1254-3

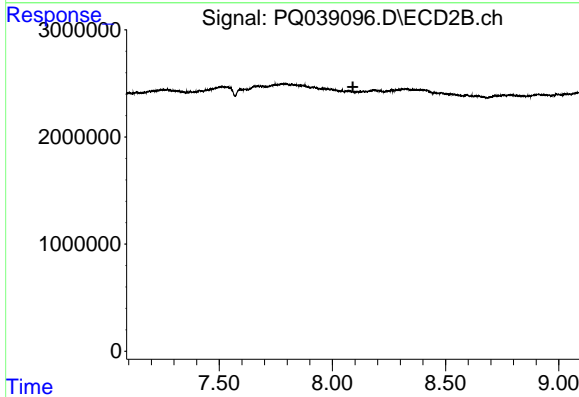
R.T.: 7.821 min
 Delta R.T.: -0.021 min
 Response: 4354992
 Conc: 15.41 ng/ml



#29 AR-1254-4

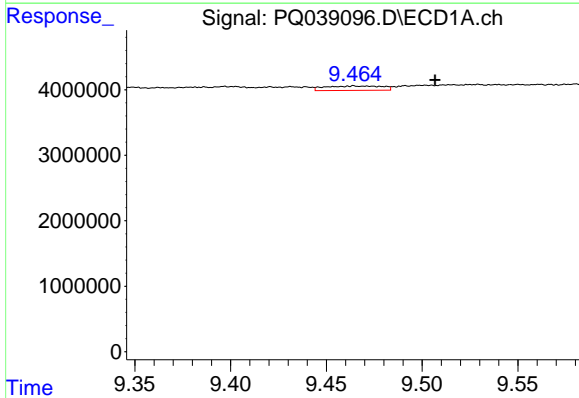
R.T.: 9.097 min
 Delta R.T.: 0.029 min
 Response: 3498341
 Conc: 13.72 ng/ml

Instrument :
 ECD_Q
 ClientSampled :
 AIBLK29



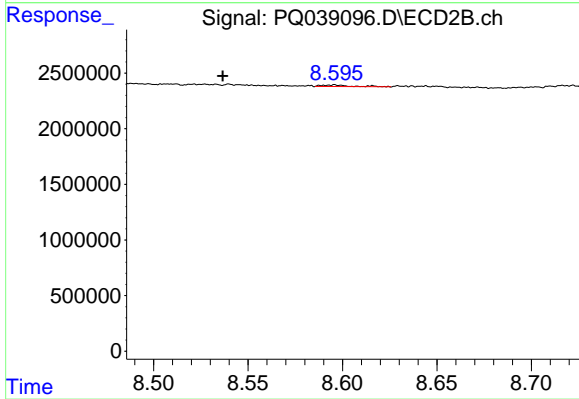
#29 AR-1254-4

R.T.: 0.000 min
 Exp R.T. : 8.091 min
 Response: 0
 Conc: N.D.



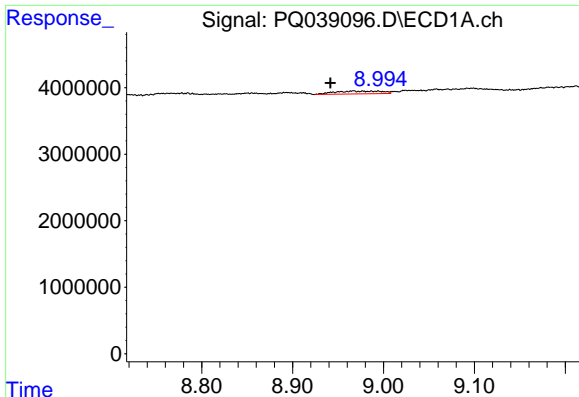
#30 AR-1254-5

R.T.: 9.466 min
 Delta R.T.: -0.041 min
 Response: 1383901
 Conc: 4.64 ng/ml



#30 AR-1254-5

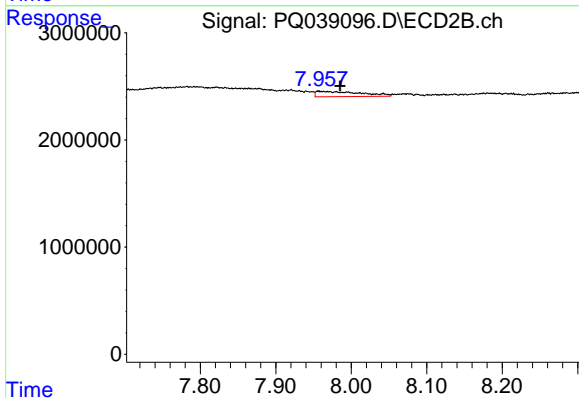
R.T.: 8.595 min
 Delta R.T.: 0.059 min
 Response: 145231
 Conc: 0.59 ng/ml



#31 AR-1260-1

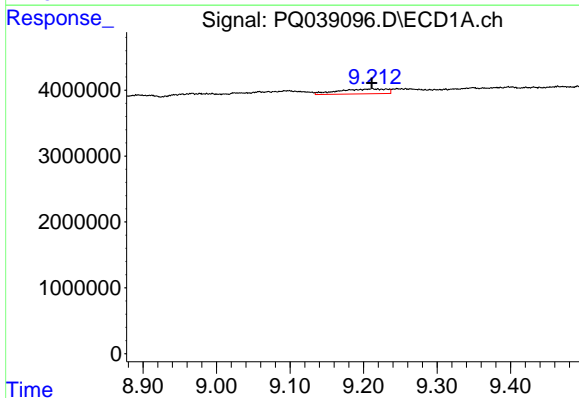
R.T.: 8.967 min
 Delta R.T.: 0.025 min
 Response: 1540896
 Conc: 3.22 ng/ml

Instrument :
 ECD_Q
 ClientSampled :
 AIBLK29



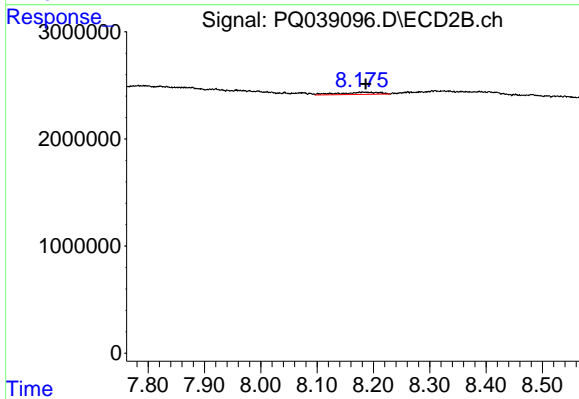
#31 AR-1260-1

R.T.: 7.958 min
 Delta R.T.: -0.027 min
 Response: 2047103
 Conc: 6.76 ng/ml



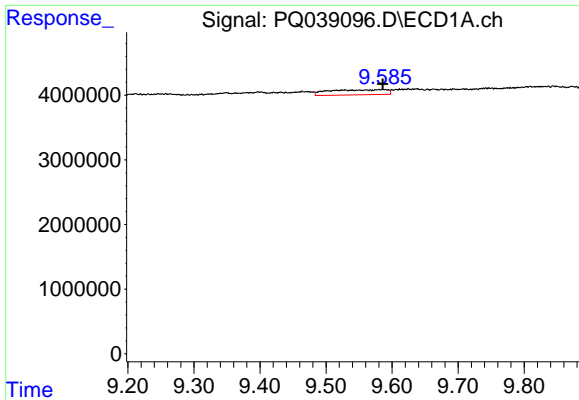
#32 AR-1260-2

R.T.: 9.211 min
 Delta R.T.: 0.000 min
 Response: 3353837
 Conc: 5.90 ng/ml



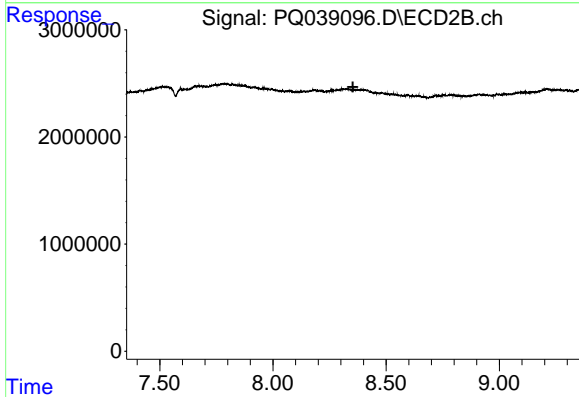
#32 AR-1260-2

R.T.: 8.181 min
 Delta R.T.: -0.005 min
 Response: 979619
 Conc: 2.64 ng/ml

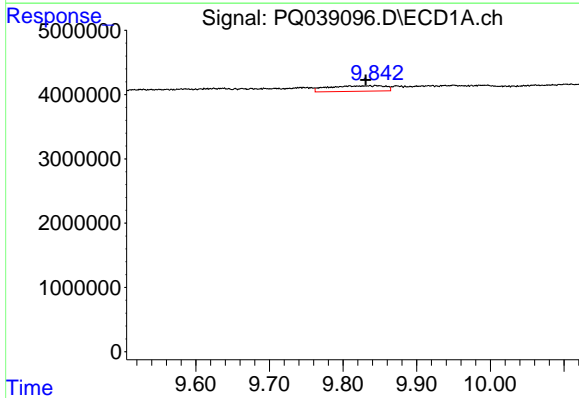


#33 AR-1260-3
 R.T.: 9.585 min
 Delta R.T.: 0.000 min
 Response: 4849172
 Conc: 11.13 ng/ml

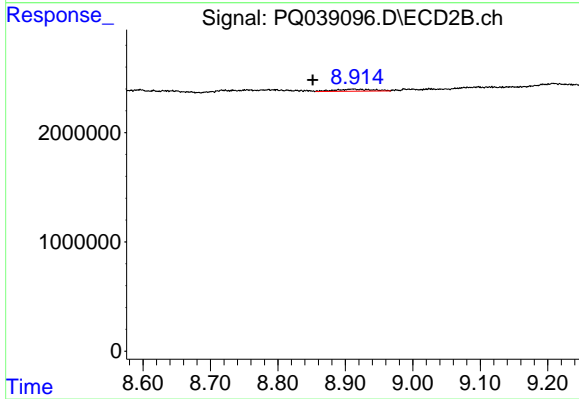
Instrument :
 ECD_Q
ClientSampled :
 AIBLK29



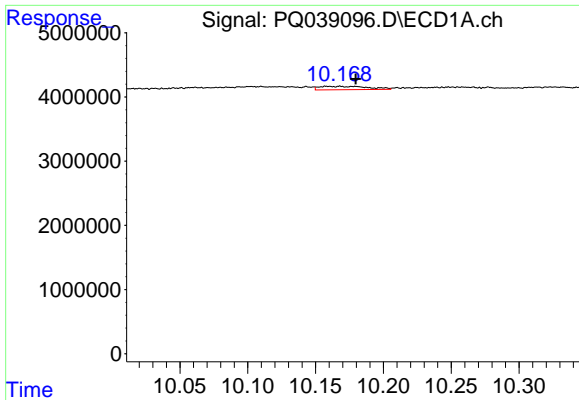
#33 AR-1260-3
 R.T.: 0.000 min
 Exp R.T. : 8.353 min
 Response: 0
 Conc: N.D.



#34 AR-1260-4
 R.T.: 9.846 min
 Delta R.T.: 0.016 min
 Response: 4543678
 Conc: 8.85 ng/ml



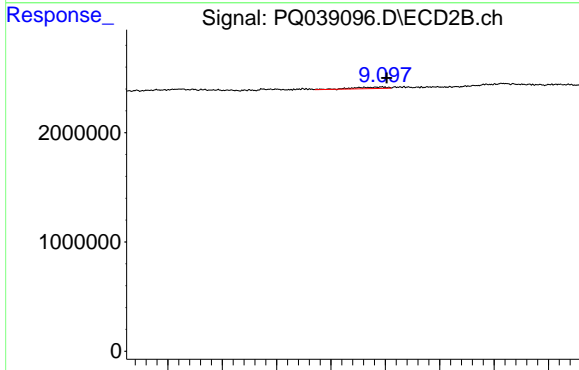
#34 AR-1260-4
 R.T.: 8.911 min
 Delta R.T.: 0.059 min
 Response: 696954
 Conc: 2.41 ng/ml



#35 AR-1260-5

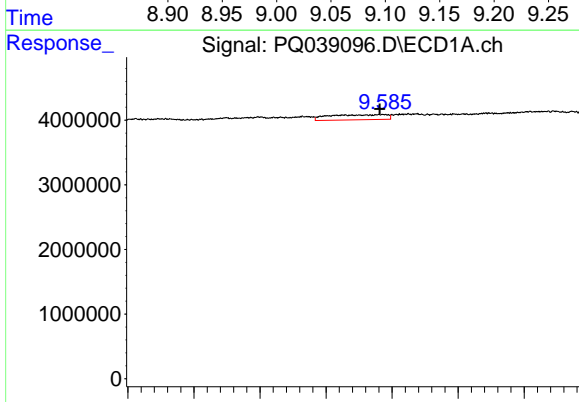
R.T.: 10.159 min
 Delta R.T.: -0.020 min
 Response: 1326890
 Conc: 1.28 ng/ml

Instrument :
 ECD_Q
 ClientSampled :
 AIBLK29



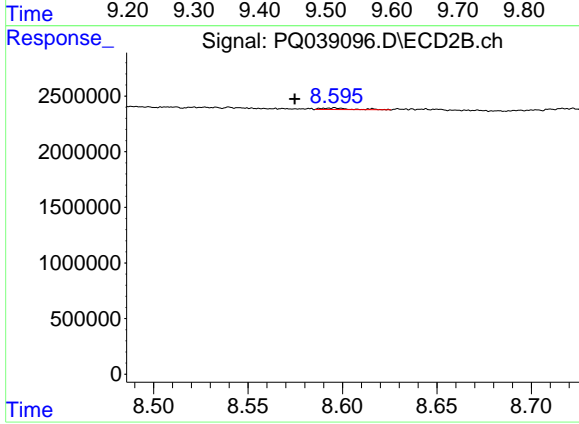
#35 AR-1260-5

R.T.: 9.096 min
 Delta R.T.: -0.005 min
 Response: 283487
 Conc: 0.40 ng/ml



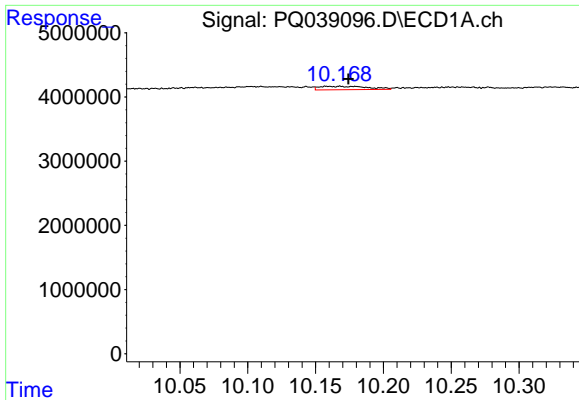
#36 AR-1262-1

R.T.: 9.585 min
 Delta R.T.: 0.004 min
 Response: 4849172
 Conc: 13.05 ng/ml



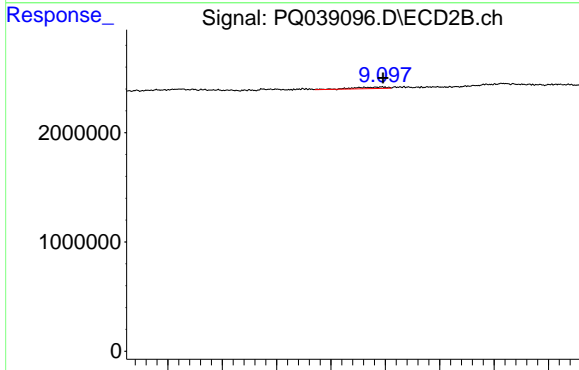
#36 AR-1262-1

R.T.: 8.595 min
 Delta R.T.: 0.021 min
 Response: 145231
 Conc: 0.55 ng/ml

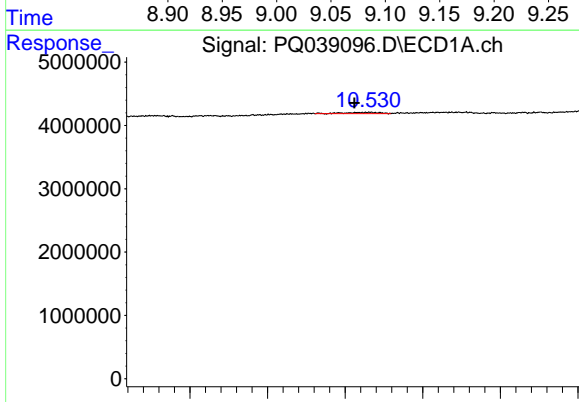


#37 AR-1262-2
 R.T.: 10.159 min
 Delta R.T.: -0.015 min
 Response: 1326890
 Conc: 2.01 ng/ml

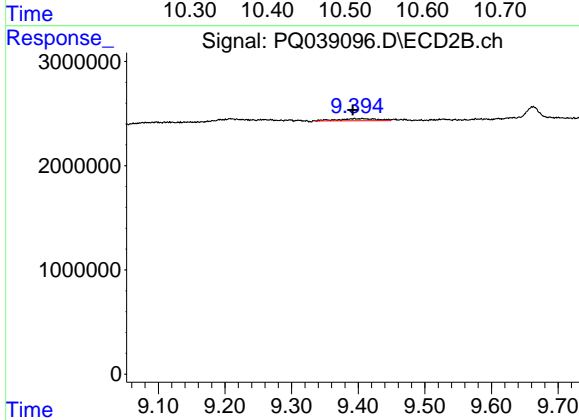
Instrument :
 ECD_Q
 ClientSampled :
 AIBLK29



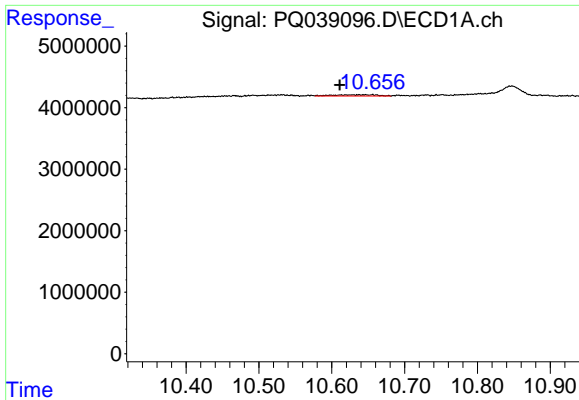
#37 AR-1262-2
 R.T.: 9.096 min
 Delta R.T.: -0.002 min
 Response: 283487
 Conc: 0.59 ng/ml



#38 AR-1262-3
 R.T.: 10.532 min
 Delta R.T.: 0.020 min
 Response: 577463
 Conc: 1.28 ng/ml



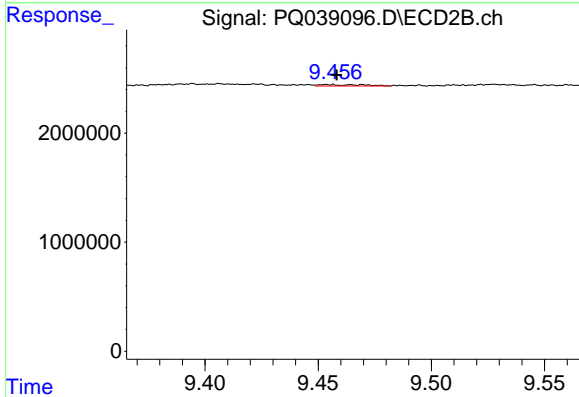
#38 AR-1262-3
 R.T.: 9.406 min
 Delta R.T.: 0.014 min
 Response: 838251
 Conc: 4.32 ng/ml



#39 AR-1262-4

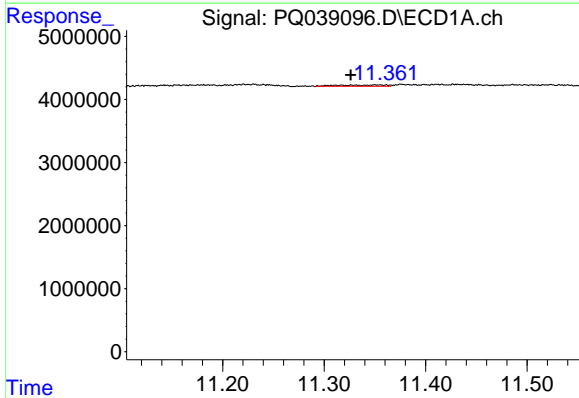
R.T.: 10.646 min
 Delta R.T.: 0.035 min
 Response: 843345
 Conc: 2.35 ng/ml

Instrument :
 ECD_Q
ClientSampled :
 AIBLK29



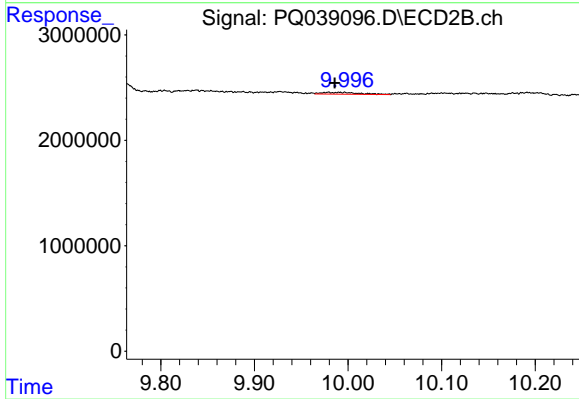
#39 AR-1262-4

R.T.: 9.454 min
 Delta R.T.: -0.005 min
 Response: 165580
 Conc: 0.45 ng/ml



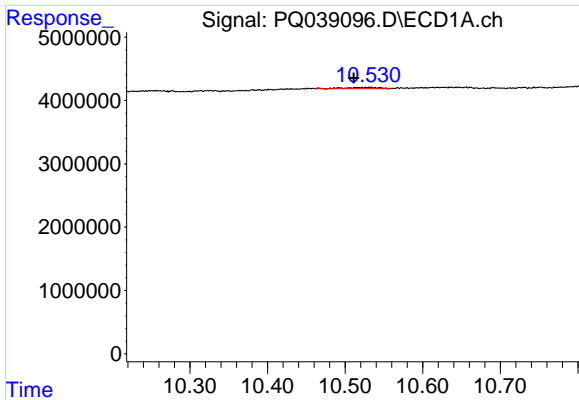
#40 AR-1262-5

R.T.: 11.352 min
 Delta R.T.: 0.026 min
 Response: 659310
 Conc: 2.65 ng/ml



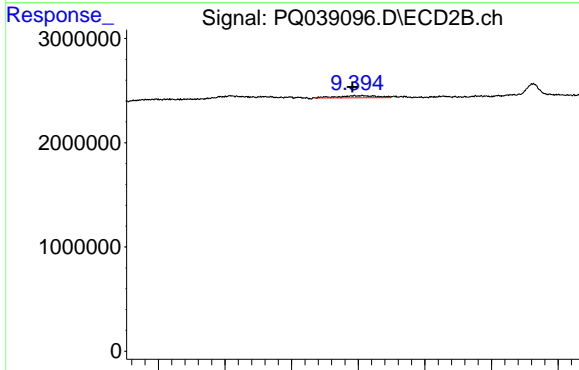
#40 AR-1262-5

R.T.: 9.979 min
 Delta R.T.: -0.007 min
 Response: 467257
 Conc: 3.09 ng/ml

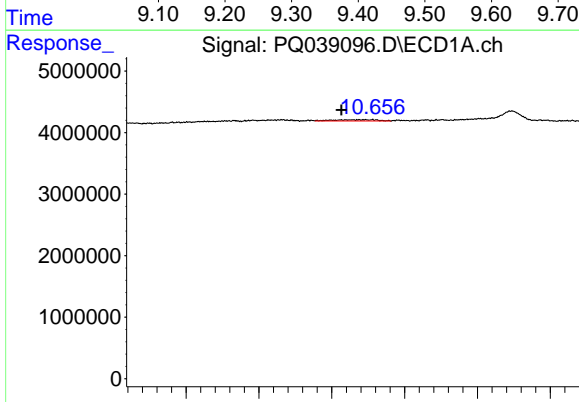


#41 AR-1268-1
 R.T.: 10.532 min
 Delta R.T.: 0.021 min
 Response: 577463
 Conc: 0.39 ng/ml

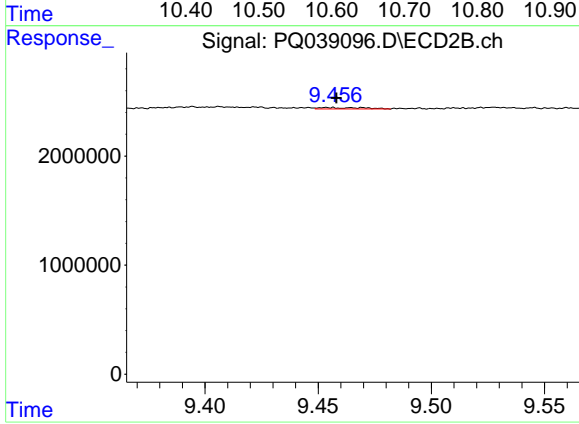
Instrument :
 ECD_Q
ClientSampleId :
 AIBLK29



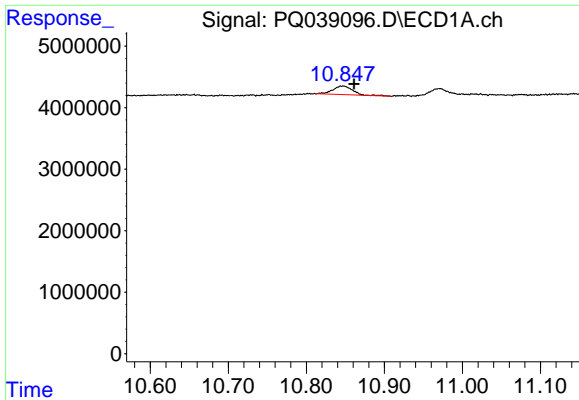
#41 AR-1268-1
 R.T.: 9.406 min
 Delta R.T.: 0.015 min
 Response: 838251
 Conc: 0.83 ng/ml



#42 AR-1268-2
 R.T.: 10.646 min
 Delta R.T.: 0.033 min
 Response: 843345
 Conc: 0.61 ng/ml



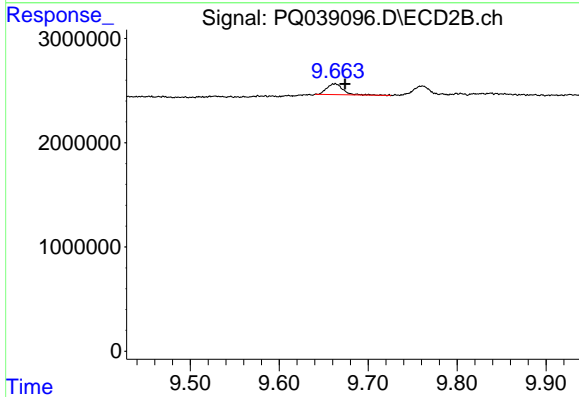
#42 AR-1268-2
 R.T.: 9.454 min
 Delta R.T.: -0.004 min
 Response: 165580
 Conc: 0.18 ng/ml



#43 AR-1268-3

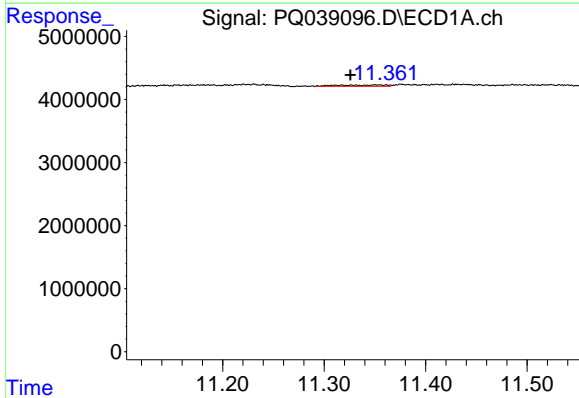
R.T.: 10.847 min
 Delta R.T.: -0.014 min
 Response: 2432402
 Conc: 1.99 ng/ml

Instrument :
 ECD_Q
 ClientSampleId :
 AIBLK29



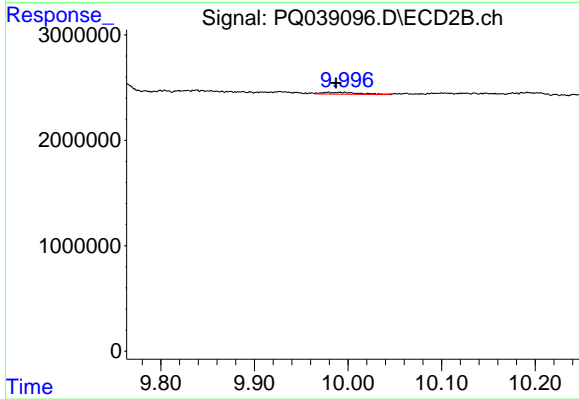
#43 AR-1268-3

R.T.: 9.662 min
 Delta R.T.: -0.012 min
 Response: 1323250
 Conc: 1.67 ng/ml



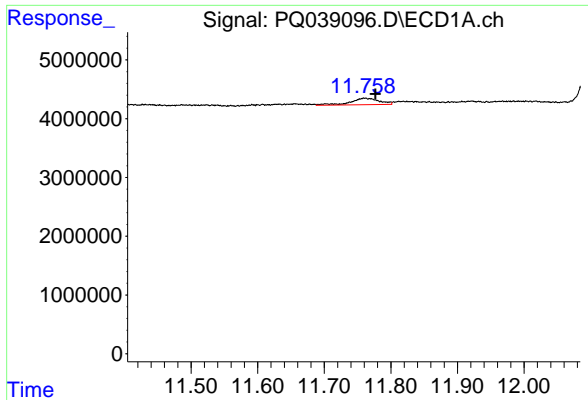
#44 AR-1268-4

R.T.: 11.352 min
 Delta R.T.: 0.026 min
 Response: 659310
 Conc: 1.31 ng/ml



#44 AR-1268-4

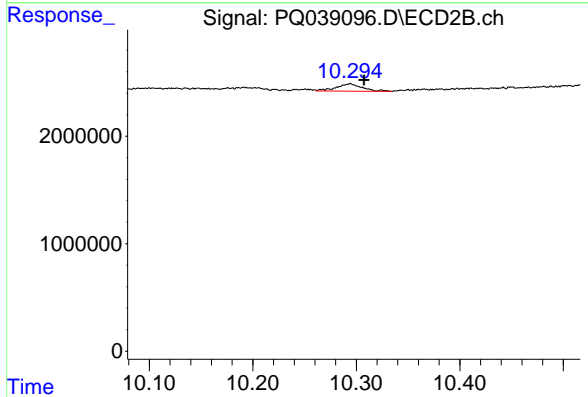
R.T.: 9.979 min
 Delta R.T.: -0.008 min
 Response: 467257
 Conc: 1.50 ng/ml



#45 AR-1268-5

R.T.: 11.761 min
Delta R.T.: -0.016 min
Response: 3321621
Conc: 0.79 ng/ml

Instrument :
ECD_Q
ClientSampled :
AIBLK29



#45 AR-1268-5

R.T.: 10.294 min
Delta R.T.: -0.014 min
Response: 1180029
Conc: 0.47 ng/ml