

Data Path : Z:\pestpcbsrv\HPCHEM1\ECD_Q\Data\PQ041524\
 Data File : PQ066071.D
 Signal(s) : Signal #1: ECD1A.ch Signal #2: ECD2B.ch
 Acq On : 15 Apr 2024 09:32
 Operator : YP\AJ
 Sample : HEXANE
 Misc :
 ALS Vial : 1 Sample Multiplier: 1

Instrument :
 ECD_Q
 ClientSampleId :
 HEXANE

Integration File signal 1: autoint1.e
 Integration File signal 2: autoint2.e
 Quant Time: Apr 16 01:20:22 2024
 Quant Method : Z:\pestpcbsrv\HPCHEM1\ECD_Q\Method\PQ031824.M
 Quant Title : GC EXTRACTABLES
 QLast Update : Tue Mar 19 12:55:45 2024
 Response via : Initial Calibration
 Integrator: ChemStation

Volume Inj. : 2 µl
 Signal #1 Phase : ZB-MR1 Signal #2 Phase: ZB-MR2
 Signal #1 Info : 30Mx0.32mmx 0.50µ Signal #2 Info : 30M x 0.32mm x 0.25µm

Compound	RT#1	RT#2	Resp#1	Resp#2	ng/ml	ng/ml

System Monitoring Compounds						
1) SA Tetrachlo...	3.429	2.719	27502	935568	0.006	0.126 #
2) SA Decachlor...	8.645	7.505	961204	1079349	0.331	0.129 #
Target Compounds						
3) L1 AR-1016-1	4.569	3.734	171443	90540	1.095	0.322 #
4) L1 AR-1016-2	4.569	3.743	171443	314954	0.748	0.774
5) L1 AR-1016-3	4.618	3.917	606603	331507	4.222	1.486 #
6) L1 AR-1016-4	4.736	3.957	138773	139835	1.206	0.733 #
7) L1 AR-1016-5	4.997	4.150	137229	211974	1.231	0.934
8) L2 AR-1221-1	3.652	2.925	35663	238978	0.696	2.848 #
9) L2 AR-1221-2	3.725	3.013	190557	15142	4.915	0.233 #
10) L2 AR-1221-3	3.814	3.094	686405	853622	5.825	4.371
11) L3 AR-1232-1	3.814	3.094	686405	853622	7.006	5.208 #
12) L3 AR-1232-2	4.292	3.743	281357	314954	5.601	1.821 #
13) L3 AR-1232-3	4.569	3.917	171443	331507	1.807	3.551 #
14) L3 AR-1232-4	4.736	3.992	138773	278922	2.947	3.496
15) L3 AR-1232-5	4.820	4.150	49790	211974	1.554	2.350 #
16) L4 AR-1242-1	4.569	3.734	171443	90540	1.600	0.457 #
17) L4 AR-1242-2	4.569	3.743	171443	314954	1.104	1.126
18) L4 AR-1242-3	4.641	3.917	257781	331507	2.599	2.132
19) L4 AR-1242-4	4.736	3.992	138773	278922	1.697	1.868
20) L4 AR-1242-5	5.468	4.496	476068	109592	5.845	0.539 #
21) L5 AR-1248-1	4.569	3.734	171443	90540	2.123	0.588 #
22) L5 AR-1248-2	4.820	3.957	49790	139835	0.445	0.607 #
23) L5 AR-1248-3	4.997	3.992	137229	278922	1.020	1.262
24) L5 AR-1248-4	5.418	4.150	1008023	211974	7.058	0.781 #
25) L5 AR-1248-5	5.418	4.531	1008023	104333	7.037	0.386 #
26) L6 AR-1254-1	5.389	4.487	455204	381189	3.003	0.948 #
27) L6 AR-1254-2	5.598	4.645	672563	258689	2.922	0.704 #
28) L6 AR-1254-3	5.951	5.031	1365091	1859783	5.768	3.207 #
29) L6 AR-1254-4	6.245	5.268	83905	1310074	0.480	3.365 #
30) L6 AR-1254-5	6.647	5.653	555682	1231315	2.880	2.157 #
31) L7 AR-1260-1	6.112	5.148	523458	584784	2.552	1.226 #
32) L7 AR-1260-2	6.382	5.325	301244	839506	1.211	1.525 #
33) L7 AR-1260-3	6.734	5.477	601902	222153	3.826	0.423 #
34) L7 AR-1260-4	6.967	5.900f	143560	807300	0.767	2.538 #
35) L7 AR-1260-5	7.257	6.180	681328	1128105	2.009	1.265 #
36) L8 AR-1262-1	6.647	5.653	555682	1231315	3.917	4.489
37) L8 AR-1262-2	7.257	5.900f	681328	807300	1.949	1.577
38) L8 AR-1262-3	7.535	6.457	1909675	638785	7.434	1.475 #
39) L8 AR-1262-4	7.600	6.527	1367906	1418370	6.905	1.917 #
40) L8 AR-1262-5	8.110	7.028	2460481	225028	19.828	0.651 #
41) L9 AR-1268-1	7.535	6.457	1909675	638785	4.175	0.515 #

Data Path : Z:\pestpcbsrv\HPCHEM1\ECD_Q\Data\PQ041524\
 Data File : PQ066071.D
 Signal(s) : Signal #1: ECD1A.ch Signal #2: ECD2B.ch
 Acq On : 15 Apr 2024 09:32
 Operator : YP\AJ
 Sample : HEXANE
 Misc :
 ALS Vial : 1 Sample Multiplier: 1

Instrument :
 ECD_Q
 ClientSampleId :
 HEXANE

Integration File signal 1: autoint1.e
 Integration File signal 2: autoint2.e
 Quant Time: Apr 16 01:20:22 2024
 Quant Method : Z:\pestpcbsrv\HPCHEM1\ECD_Q\Method\PQ031824.M
 Quant Title : GC EXTRACTABLES
 QLast Update : Tue Mar 19 12:55:45 2024
 Response via : Initial Calibration
 Integrator: ChemStation

Volume Inj. : 2 µl
 Signal #1 Phase : ZB-MR1 Signal #2 Phase: ZB-MR2
 Signal #1 Info : 30Mx0.32mmx 0.50µ Signal #2 Info : 30M x 0.32mm x 0.25µm

	Compound	RT#1	RT#2	Resp#1	Resp#2	ng/ml	ng/ml
42)	L9 AR-1268-2	7.600	6.527	1367906	1418370	3.264	1.242 #
43)	L9 AR-1268-3	7.792	6.729	465149	2721360	1.354	2.790 #
44)	L9 AR-1268-4	8.110	7.028	2460481	225028	16.444	0.532 #
45)	L9 AR-1268-5	8.430	7.331f	329299	482029	0.333	0.169 #

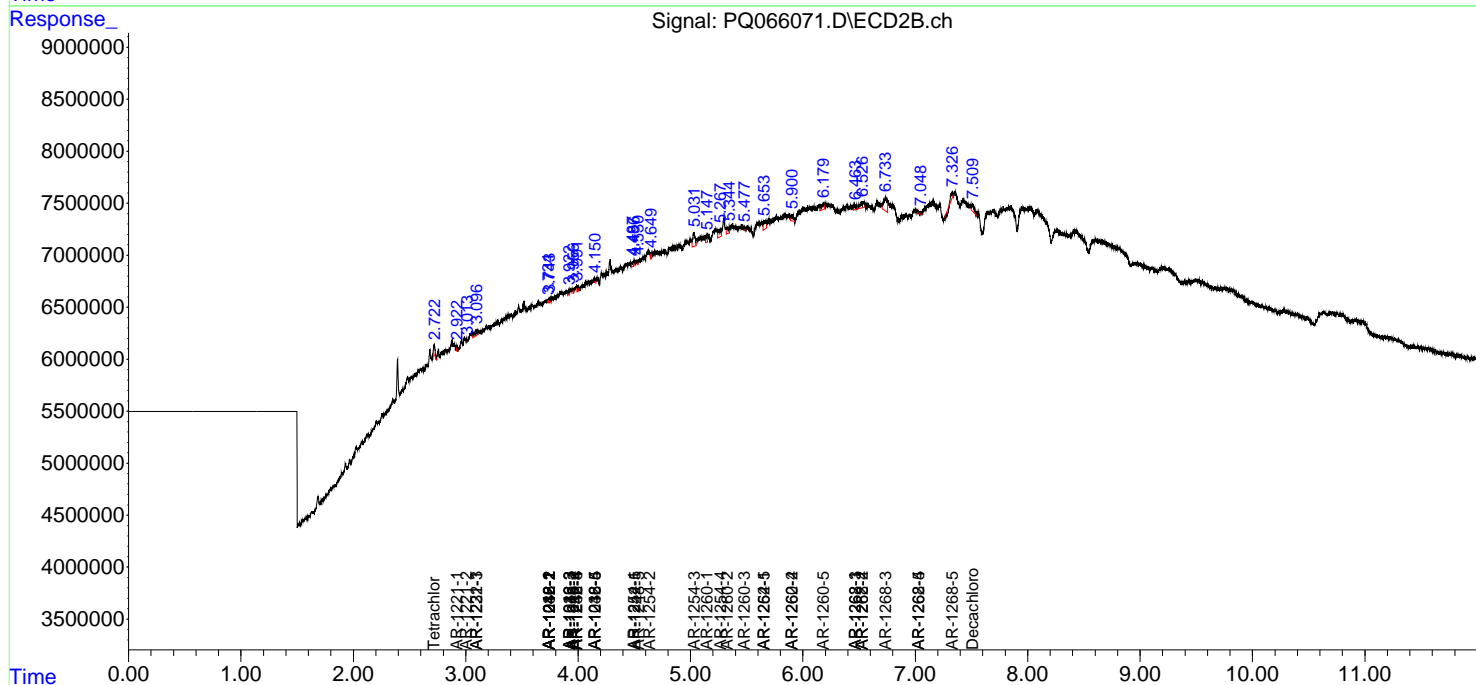
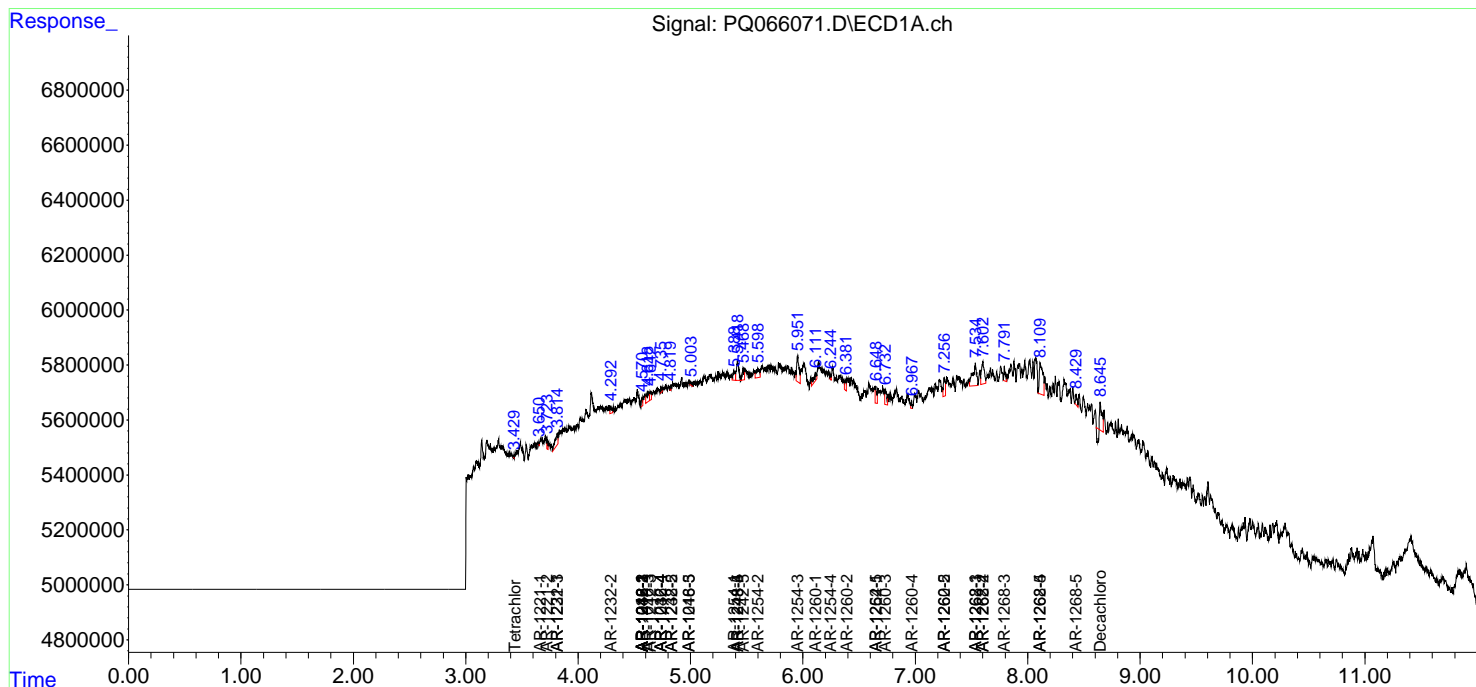
(f)=RT Delta > 1/2 Window (#)=Amounts differ by > 25% (m)=manual int.

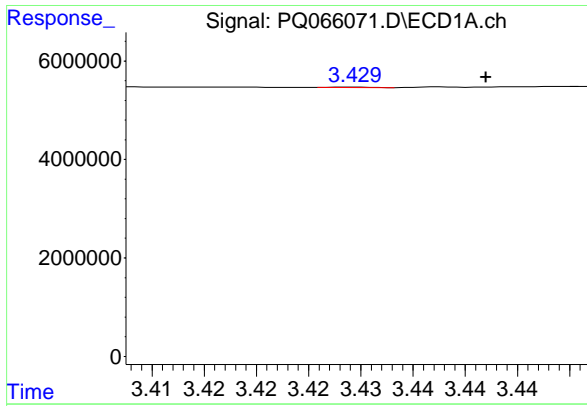
Data Path : Z:\pestpcbsrv\HPCHEM1\ECD_Q\Data\PQ041524\
 Data File : PQ066071.D
 Signal(s) : Signal #1: ECD1A.ch Signal #2: ECD2B.ch
 Acq On : 15 Apr 2024 09:32
 Operator : YP\AJ
 Sample : HEXANE
 Misc :
 ALS Vial : 1 Sample Multiplier: 1

Instrument :
 ECD_Q
 ClientSampleId :
 HEXANE

Integration File signal 1: autoint1.e
 Integration File signal 2: autoint2.e
 Quant Time: Apr 16 01:20:22 2024
 Quant Method : Z:\pestpcbsrv\HPCHEM1\ECD_Q\Method\PQ031824.M
 Quant Title : GC EXTRACTABLES
 QLast Update : Tue Mar 19 12:55:45 2024
 Response via : Initial Calibration
 Integrator: ChemStation

Volume Inj. : 2 µl
 Signal #1 Phase : ZB-MR1 Signal #2 Phase: ZB-MR2
 Signal #1 Info : 30Mx0.32mmx 0.50µ Signal #2 Info : 30M x 0.32mm x 0.25µm

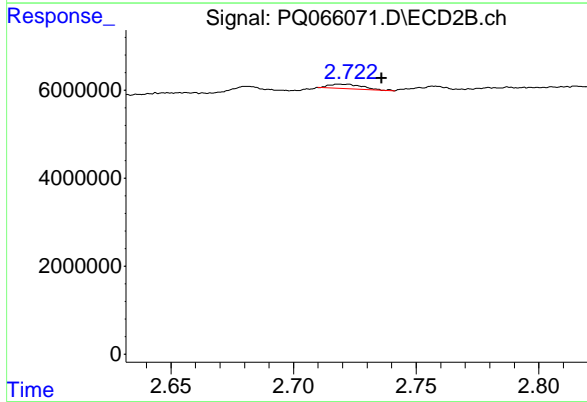




#1 Tetrachloro-m-xylene

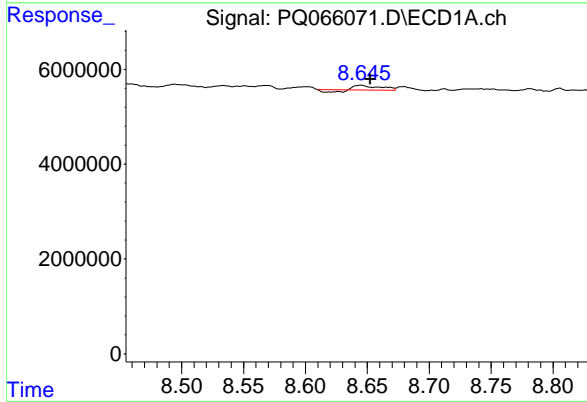
R.T.: 3.429 min
 Delta R.T.: -0.013 min
 Response: 27502
 Conc: 0.01 ng/ml

Instrument :
 ECD_Q
 ClientSampleId :
 HEXANE



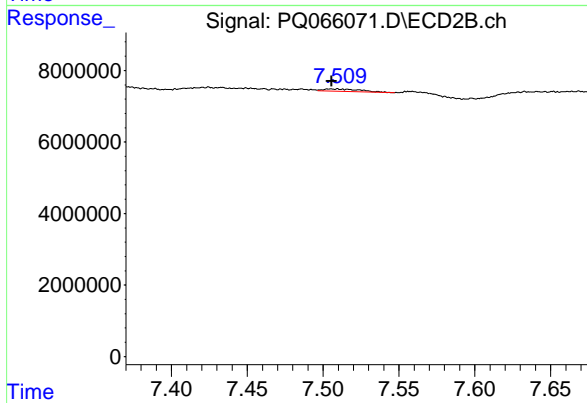
#1 Tetrachloro-m-xylene

R.T.: 2.719 min
 Delta R.T.: -0.017 min
 Response: 935568
 Conc: 0.13 ng/ml



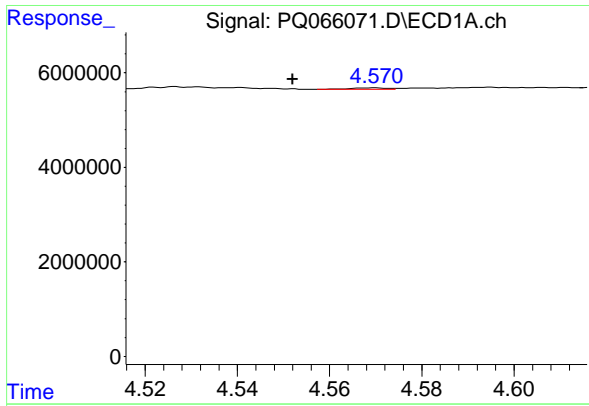
#2 Decachlorobiphenyl

R.T.: 8.645 min
 Delta R.T.: -0.007 min
 Response: 961204
 Conc: 0.33 ng/ml



#2 Decachlorobiphenyl

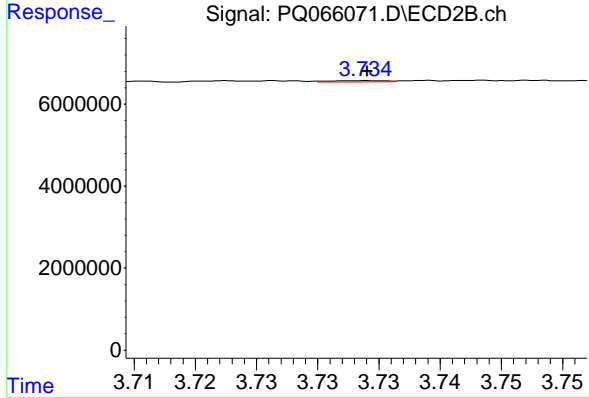
R.T.: 7.505 min
 Delta R.T.: 0.000 min
 Response: 1079349
 Conc: 0.13 ng/ml



#3 AR-1016-1

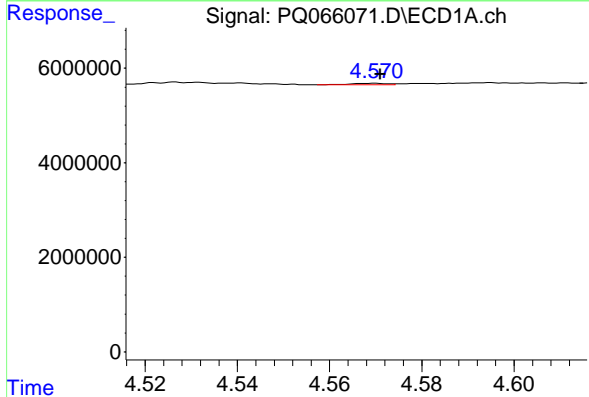
R.T.: 4.569 min
 Delta R.T.: 0.017 min
 Response: 171443
 Conc: 1.09 ng/ml

Instrument :
 ECD_Q
 ClientSampleId :
 HEXANE



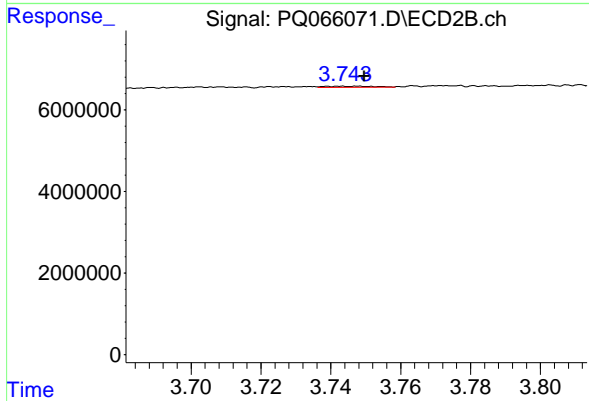
#3 AR-1016-1

R.T.: 3.734 min
 Delta R.T.: 0.000 min
 Response: 90540
 Conc: 0.32 ng/ml



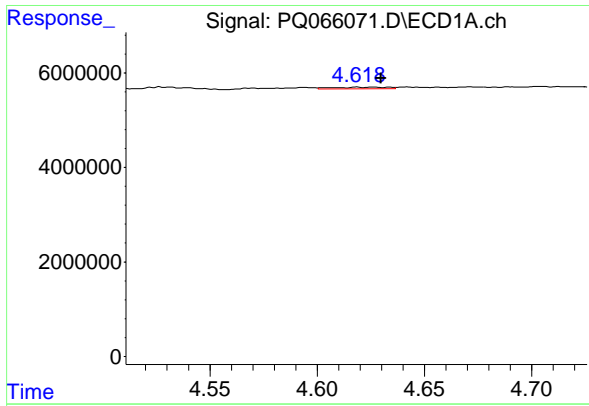
#4 AR-1016-2

R.T.: 4.569 min
 Delta R.T.: -0.002 min
 Response: 171443
 Conc: 0.75 ng/ml



#4 AR-1016-2

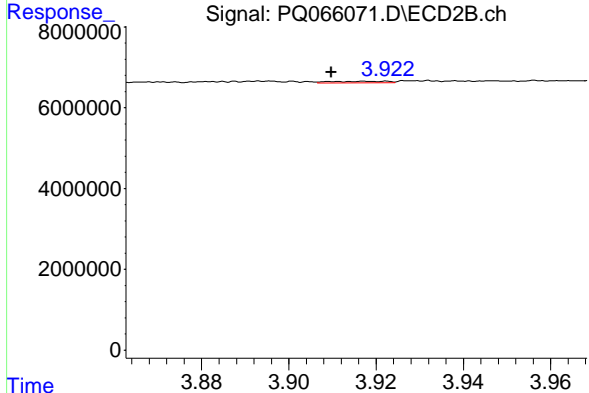
R.T.: 3.743 min
 Delta R.T.: -0.006 min
 Response: 314954
 Conc: 0.77 ng/ml



#5 AR-1016-3

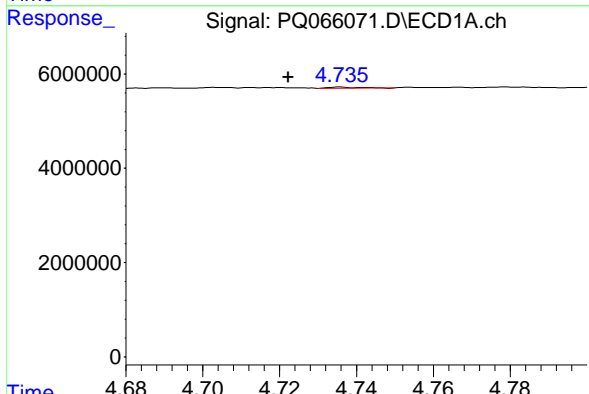
R.T.: 4.618 min
 Delta R.T.: -0.011 min
 Response: 606603
 Conc: 4.22 ng/ml

Instrument :
 ECD_Q
 ClientSampleId :
 HEXANE



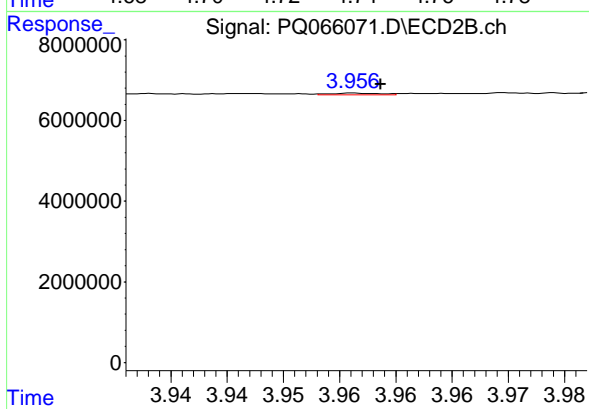
#5 AR-1016-3

R.T.: 3.917 min
 Delta R.T.: 0.008 min
 Response: 331507
 Conc: 1.49 ng/ml



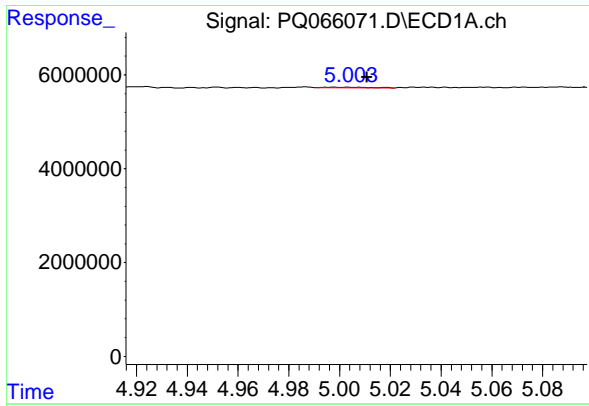
#6 AR-1016-4

R.T.: 4.736 min
 Delta R.T.: 0.013 min
 Response: 138773
 Conc: 1.21 ng/ml



#6 AR-1016-4

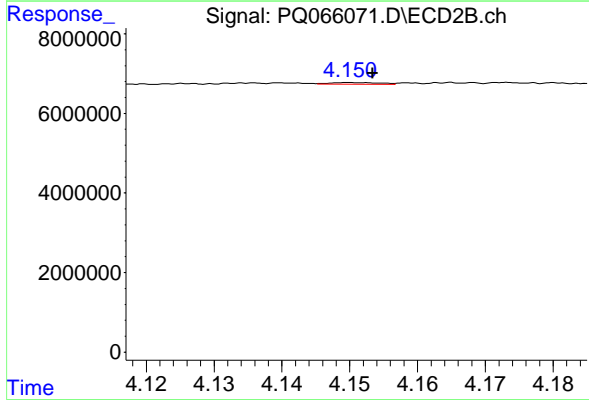
R.T.: 3.957 min
 Delta R.T.: -0.002 min
 Response: 139835
 Conc: 0.73 ng/ml



#7 AR-1016-5

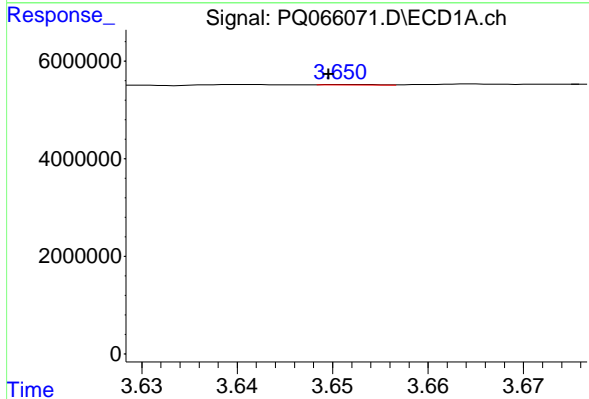
R.T.: 4.997 min
 Delta R.T.: -0.014 min
 Response: 137229
 Conc: 1.23 ng/ml

Instrument :
 ECD_Q
 ClientSampleId :
 HEXANE



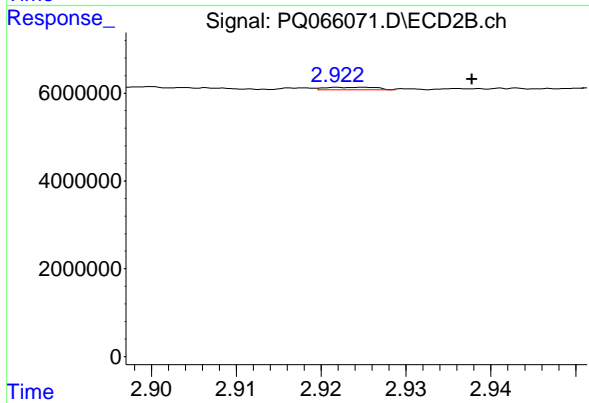
#7 AR-1016-5

R.T.: 4.150 min
 Delta R.T.: -0.003 min
 Response: 211974
 Conc: 0.93 ng/ml



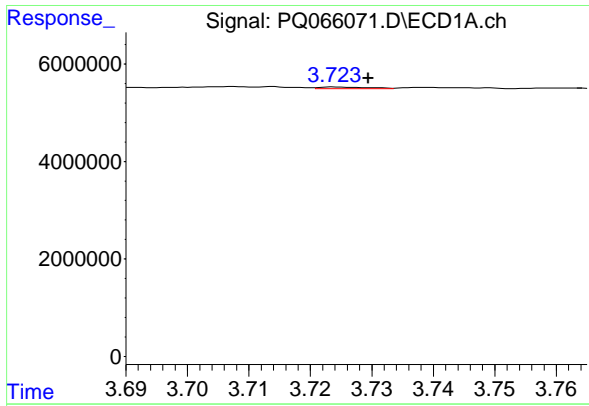
#8 AR-1221-1

R.T.: 3.652 min
 Delta R.T.: 0.002 min
 Response: 35663
 Conc: 0.70 ng/ml



#8 AR-1221-1

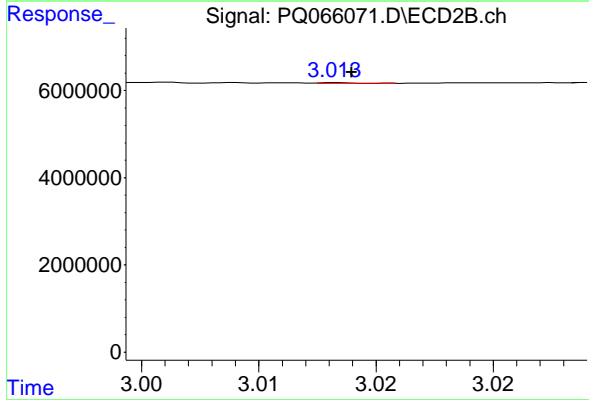
R.T.: 2.925 min
 Delta R.T.: -0.013 min
 Response: 238978
 Conc: 2.85 ng/ml



#9 AR-1221-2

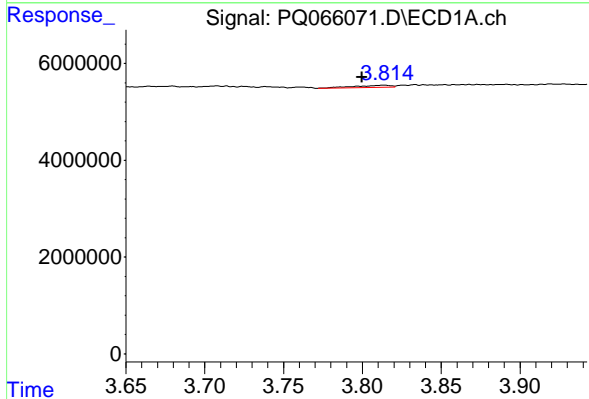
R.T.: 3.725 min
 Delta R.T.: -0.005 min
 Response: 190557
 Conc: 4.91 ng/ml

Instrument :
 ECD_Q
 ClientSampleId :
 HEXANE



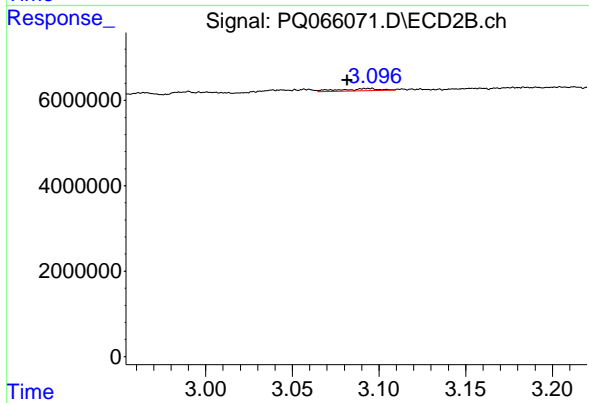
#9 AR-1221-2

R.T.: 3.013 min
 Delta R.T.: 0.000 min
 Response: 15142
 Conc: 0.23 ng/ml



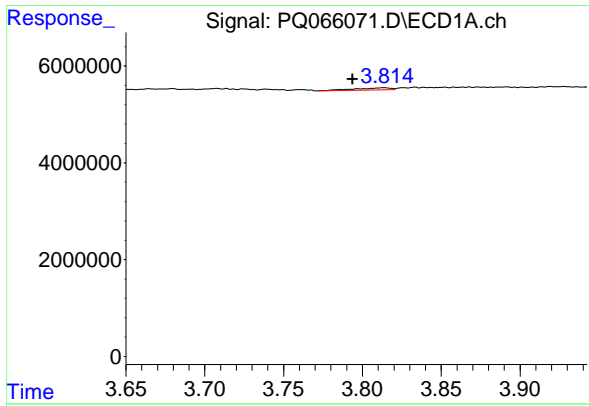
#10 AR-1221-3

R.T.: 3.814 min
 Delta R.T.: 0.014 min
 Response: 686405
 Conc: 5.83 ng/ml



#10 AR-1221-3

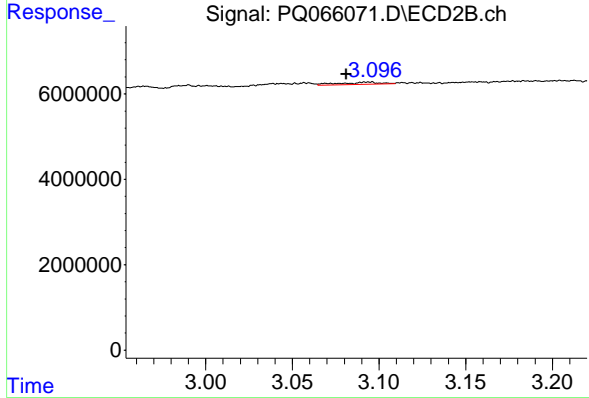
R.T.: 3.094 min
 Delta R.T.: 0.012 min
 Response: 853622
 Conc: 4.37 ng/ml



#11 AR-1232-1

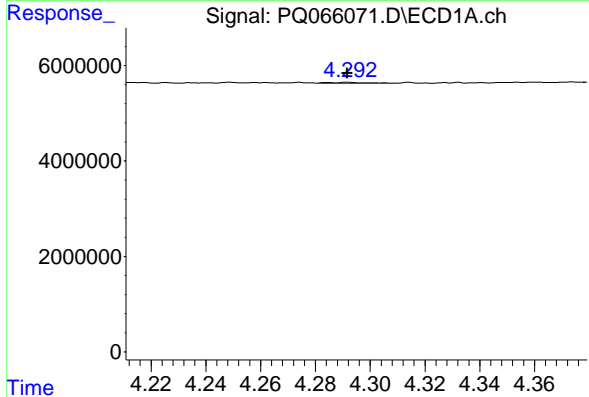
R.T.: 3.814 min
 Delta R.T.: 0.020 min
 Response: 686405
 Conc: 7.01 ng/ml

Instrument :
 ECD_Q
 ClientSampleId :
 HEXANE



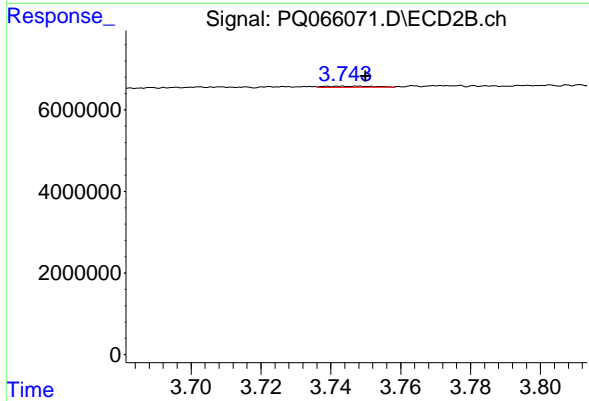
#11 AR-1232-1

R.T.: 3.094 min
 Delta R.T.: 0.013 min
 Response: 853622
 Conc: 5.21 ng/ml



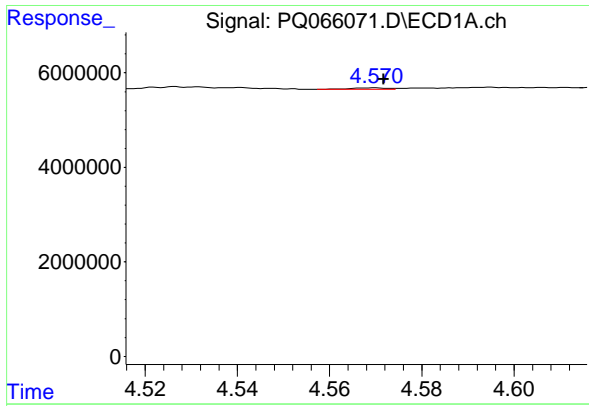
#12 AR-1232-2

R.T.: 4.292 min
 Delta R.T.: 0.000 min
 Response: 281357
 Conc: 5.60 ng/ml



#12 AR-1232-2

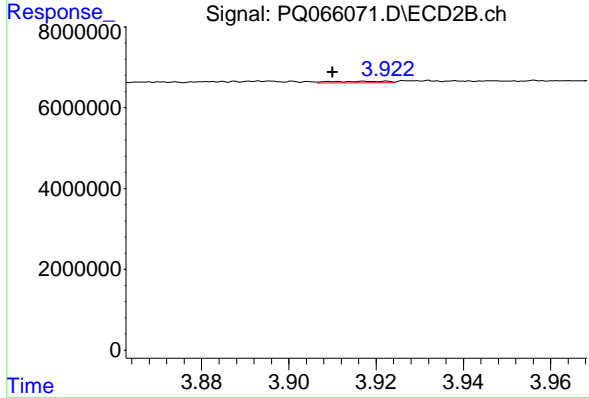
R.T.: 3.743 min
 Delta R.T.: -0.007 min
 Response: 314954
 Conc: 1.82 ng/ml



#13 AR-1232-3

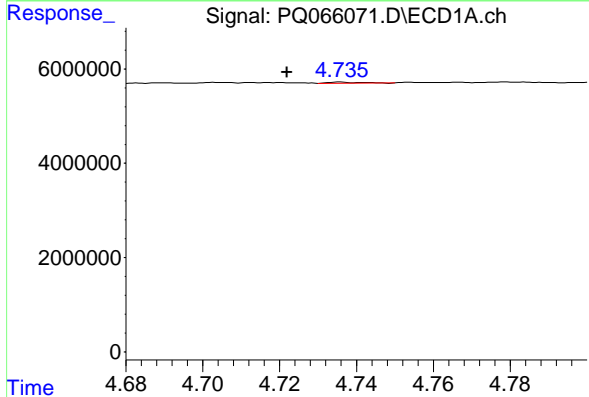
R.T.: 4.569 min
 Delta R.T.: -0.002 min
 Response: 171443
 Conc: 1.81 ng/ml

Instrument :
 ECD_Q
 ClientSampleId :
 HEXANE



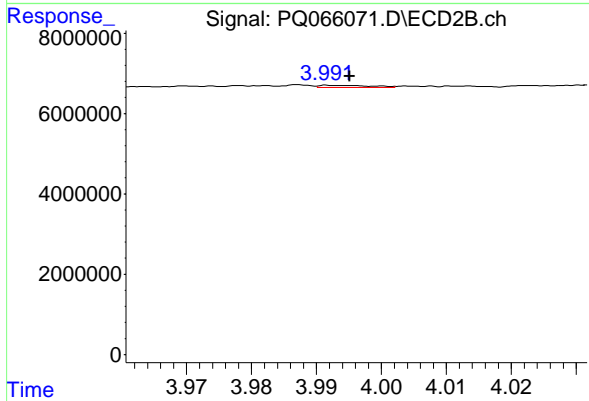
#13 AR-1232-3

R.T.: 3.917 min
 Delta R.T.: 0.007 min
 Response: 331507
 Conc: 3.55 ng/ml



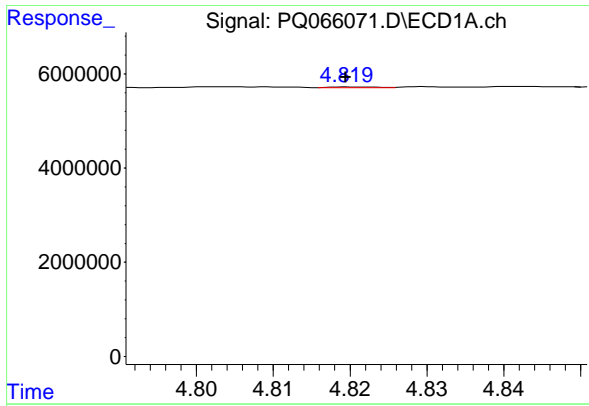
#14 AR-1232-4

R.T.: 4.736 min
 Delta R.T.: 0.014 min
 Response: 138773
 Conc: 2.95 ng/ml



#14 AR-1232-4

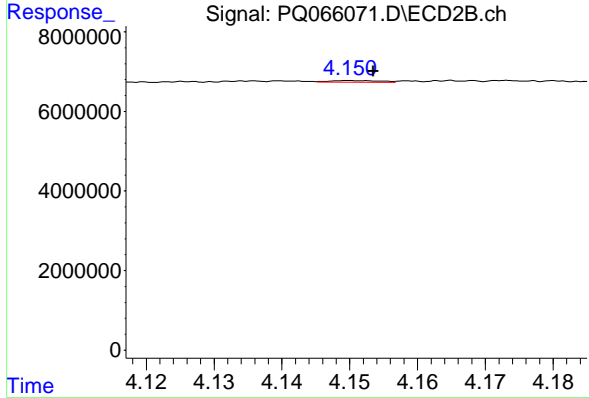
R.T.: 3.992 min
 Delta R.T.: -0.003 min
 Response: 278922
 Conc: 3.50 ng/ml



#15 AR-1232-5

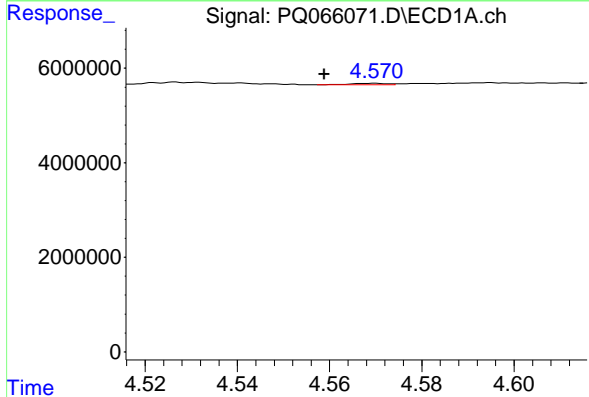
R.T.: 4.820 min
 Delta R.T.: 0.000 min
 Response: 49790
 Conc: 1.55 ng/ml

Instrument :
 ECD_Q
 ClientSampleId :
 HEXANE



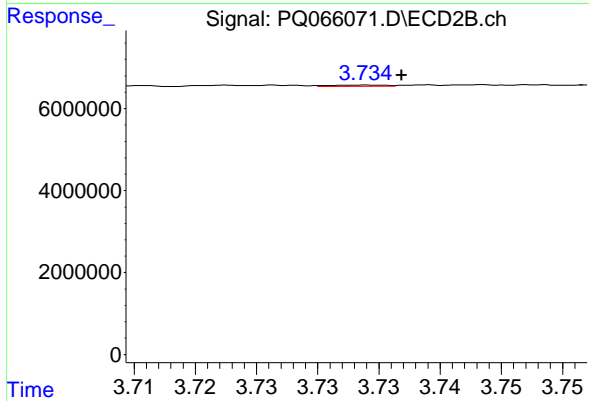
#15 AR-1232-5

R.T.: 4.150 min
 Delta R.T.: -0.003 min
 Response: 211974
 Conc: 2.35 ng/ml



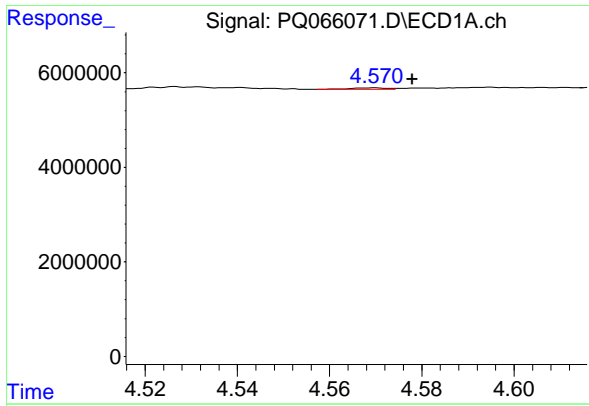
#16 AR-1242-1

R.T.: 4.569 min
 Delta R.T.: 0.010 min
 Response: 171443
 Conc: 1.60 ng/ml



#16 AR-1242-1

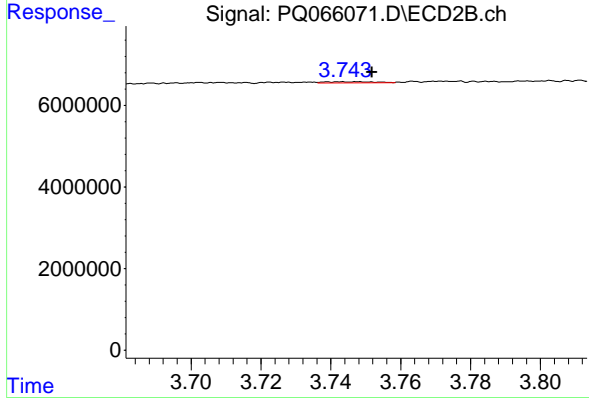
R.T.: 3.734 min
 Delta R.T.: -0.003 min
 Response: 90540
 Conc: 0.46 ng/ml



#17 AR-1242-2

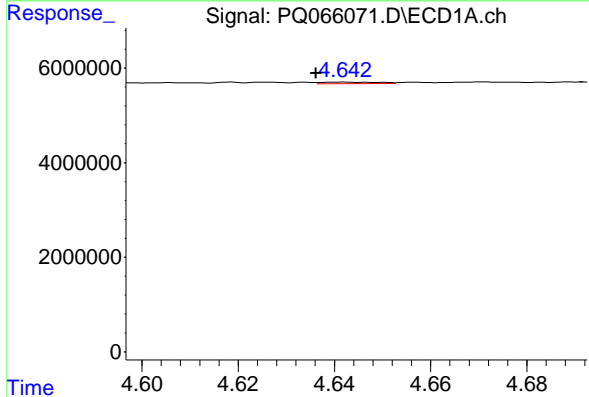
R.T.: 4.569 min
 Delta R.T.: -0.009 min
 Response: 171443
 Conc: 1.10 ng/ml

Instrument :
 ECD_Q
 ClientSampleId :
 HEXANE



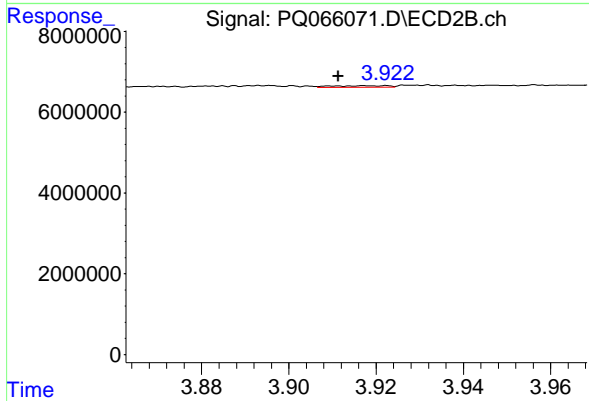
#17 AR-1242-2

R.T.: 3.743 min
 Delta R.T.: -0.008 min
 Response: 314954
 Conc: 1.13 ng/ml



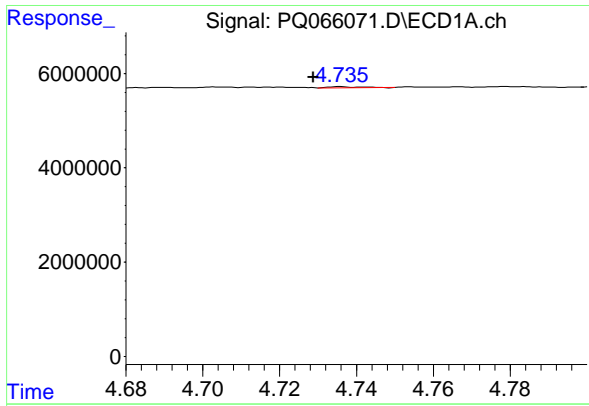
#18 AR-1242-3

R.T.: 4.641 min
 Delta R.T.: 0.005 min
 Response: 257781
 Conc: 2.60 ng/ml



#18 AR-1242-3

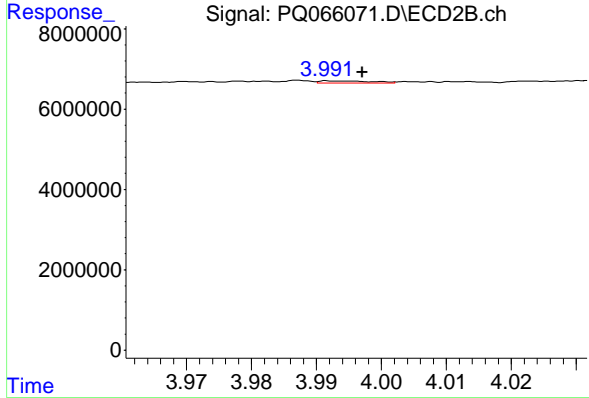
R.T.: 3.917 min
 Delta R.T.: 0.006 min
 Response: 331507
 Conc: 2.13 ng/ml



#19 AR-1242-4

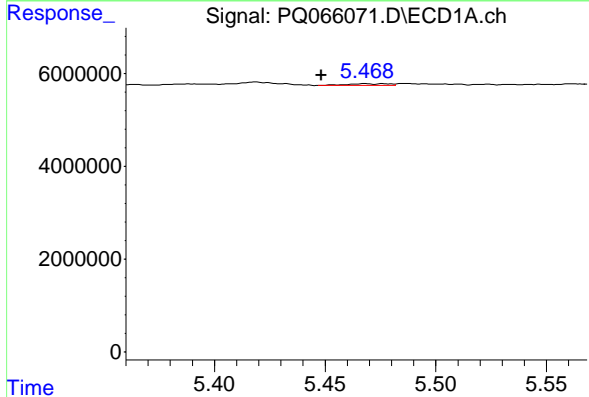
R.T.: 4.736 min
 Delta R.T.: 0.007 min
 Response: 138773
 Conc: 1.70 ng/ml

Instrument :
 ECD_Q
 ClientSampleId :
 HEXANE



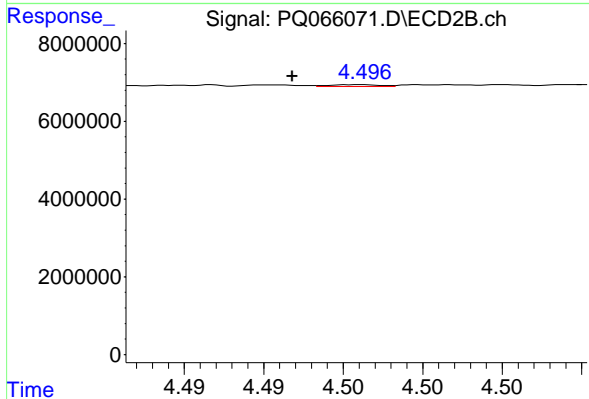
#19 AR-1242-4

R.T.: 3.992 min
 Delta R.T.: -0.005 min
 Response: 278922
 Conc: 1.87 ng/ml



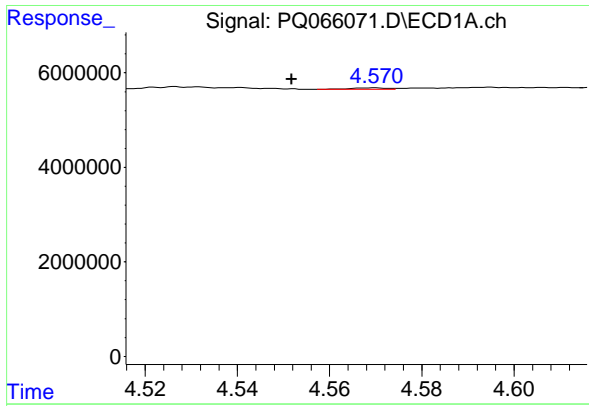
#20 AR-1242-5

R.T.: 5.468 min
 Delta R.T.: 0.020 min
 Response: 476068
 Conc: 5.85 ng/ml



#20 AR-1242-5

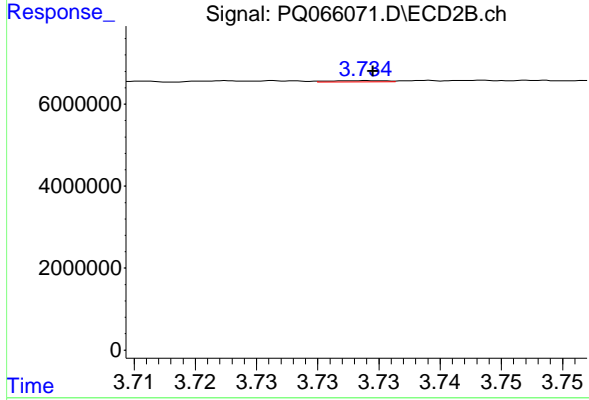
R.T.: 4.496 min
 Delta R.T.: 0.004 min
 Response: 109592
 Conc: 0.54 ng/ml



#21 AR-1248-1

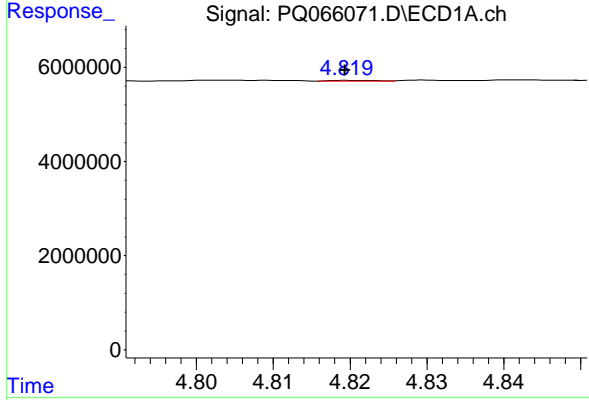
R.T.: 4.569 min
 Delta R.T.: 0.018 min
 Response: 171443
 Conc: 2.12 ng/ml

Instrument :
 ECD_Q
 ClientSampleId :
 HEXANE



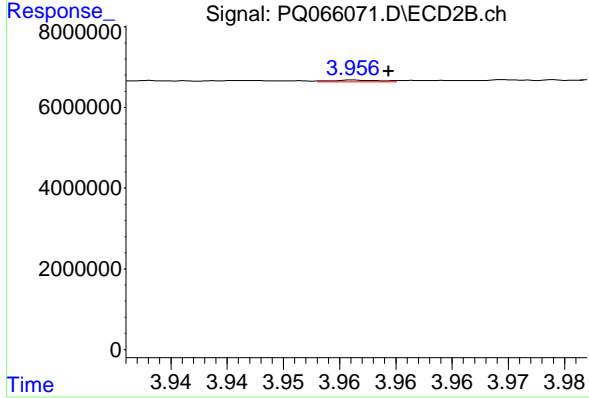
#21 AR-1248-1

R.T.: 3.734 min
 Delta R.T.: 0.000 min
 Response: 90540
 Conc: 0.59 ng/ml



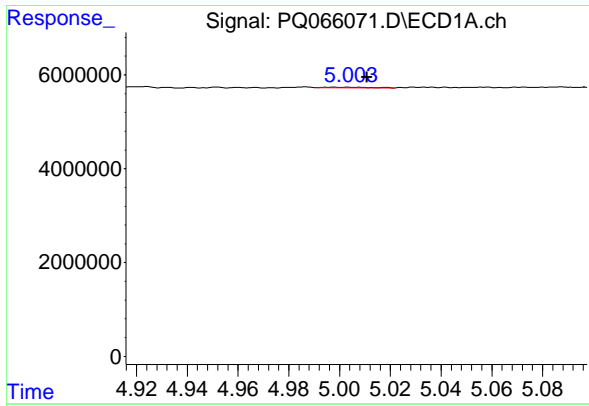
#22 AR-1248-2

R.T.: 4.820 min
 Delta R.T.: 0.000 min
 Response: 49790
 Conc: 0.44 ng/ml



#22 AR-1248-2

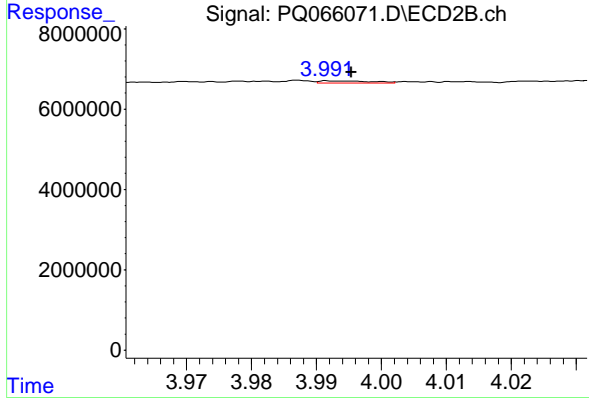
R.T.: 3.957 min
 Delta R.T.: -0.003 min
 Response: 139835
 Conc: 0.61 ng/ml



#23 AR-1248-3

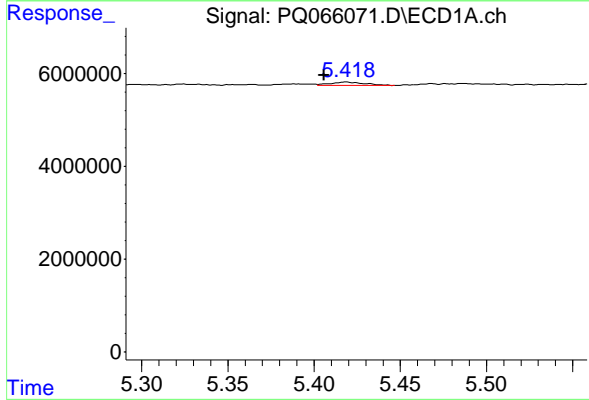
R.T.: 4.997 min
 Delta R.T.: -0.014 min
 Response: 137229
 Conc: 1.02 ng/ml

Instrument :
 ECD_Q
 ClientSampleId :
 HEXANE



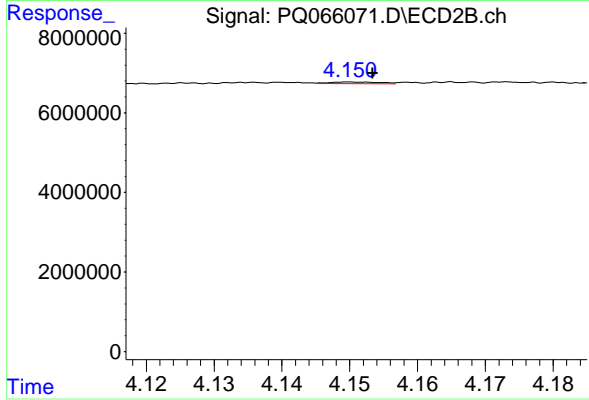
#23 AR-1248-3

R.T.: 3.992 min
 Delta R.T.: -0.003 min
 Response: 278922
 Conc: 1.26 ng/ml



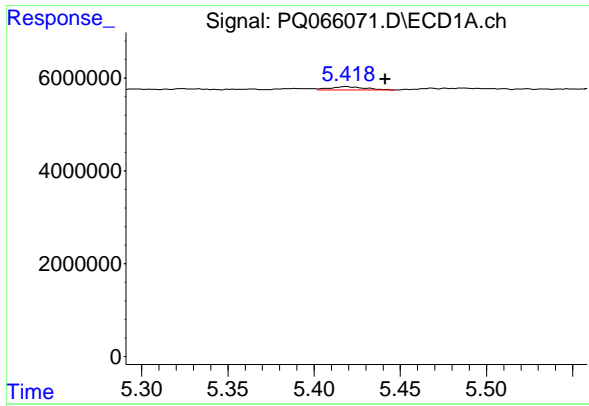
#24 AR-1248-4

R.T.: 5.418 min
 Delta R.T.: 0.013 min
 Response: 1008023
 Conc: 7.06 ng/ml



#24 AR-1248-4

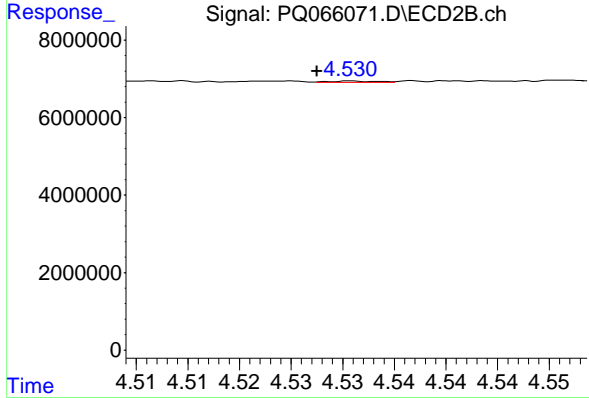
R.T.: 4.150 min
 Delta R.T.: -0.003 min
 Response: 211974
 Conc: 0.78 ng/ml



#25 AR-1248-5

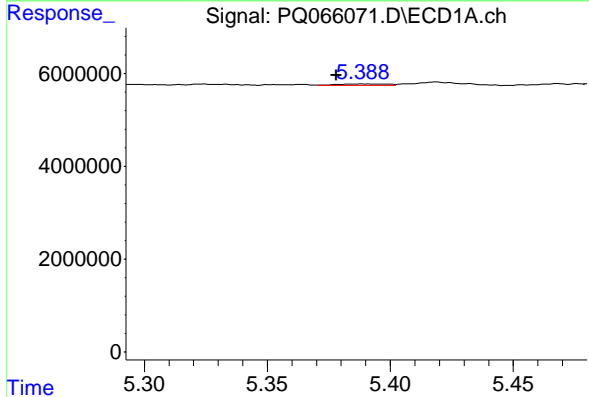
R.T.: 5.418 min
 Delta R.T.: -0.023 min
 Response: 1008023
 Conc: 7.04 ng/ml

Instrument :
 ECD_Q
 ClientSampleId :
 HEXANE



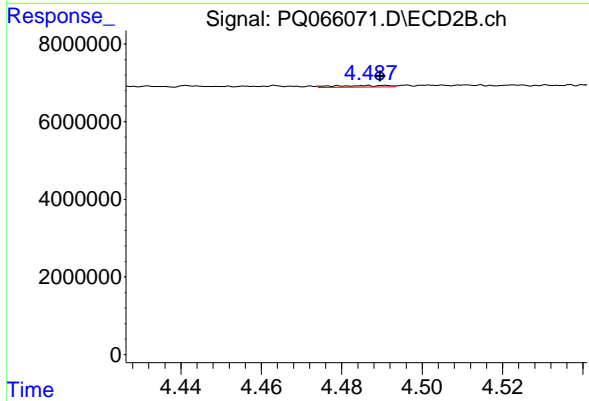
#25 AR-1248-5

R.T.: 4.531 min
 Delta R.T.: 0.003 min
 Response: 104333
 Conc: 0.39 ng/ml



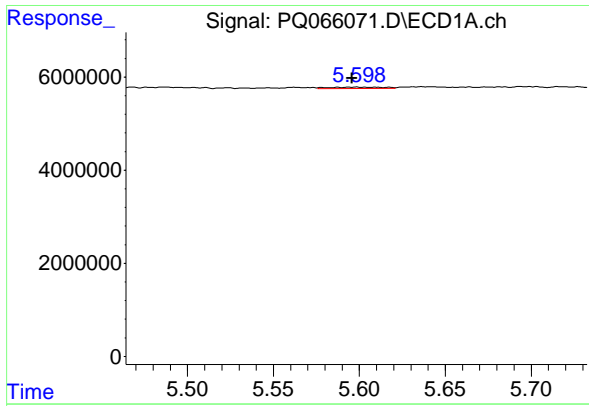
#26 AR-1254-1

R.T.: 5.389 min
 Delta R.T.: 0.011 min
 Response: 455204
 Conc: 3.00 ng/ml



#26 AR-1254-1

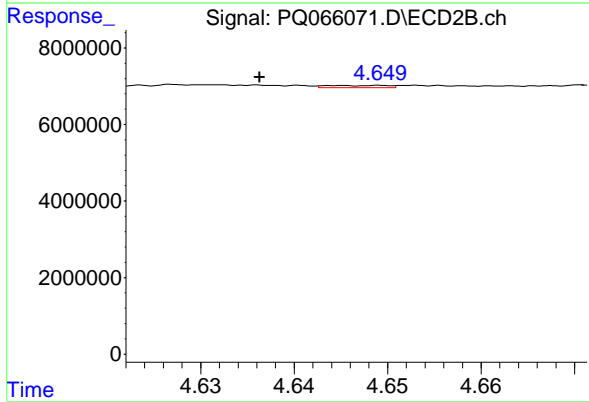
R.T.: 4.487 min
 Delta R.T.: -0.003 min
 Response: 381189
 Conc: 0.95 ng/ml



#27 AR-1254-2

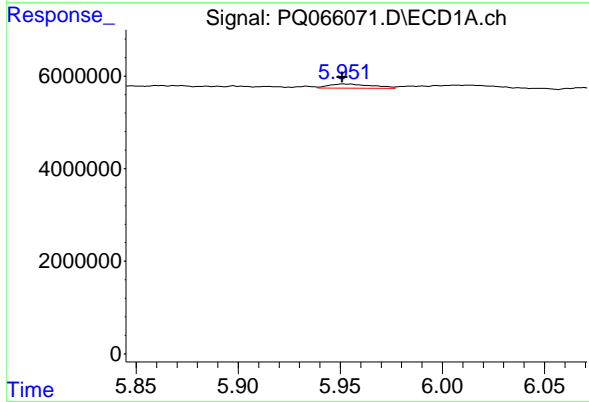
R.T.: 5.598 min
 Delta R.T.: 0.003 min
 Response: 672563
 Conc: 2.92 ng/ml

Instrument :
 ECD_Q
 ClientSampleId :
 HEXANE



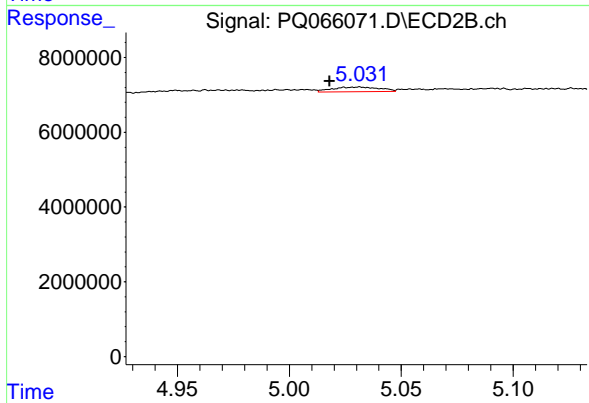
#27 AR-1254-2

R.T.: 4.645 min
 Delta R.T.: 0.009 min
 Response: 258689
 Conc: 0.70 ng/ml



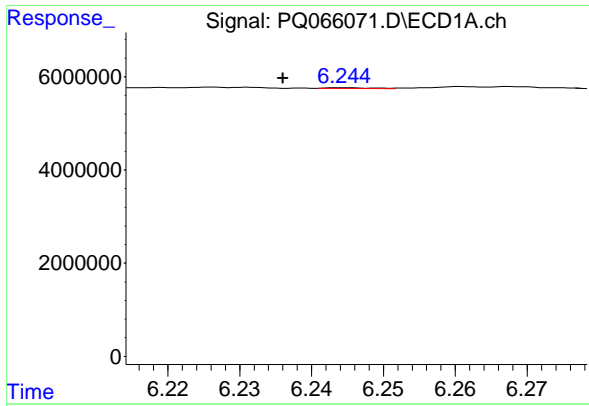
#28 AR-1254-3

R.T.: 5.951 min
 Delta R.T.: 0.000 min
 Response: 1365091
 Conc: 5.77 ng/ml



#28 AR-1254-3

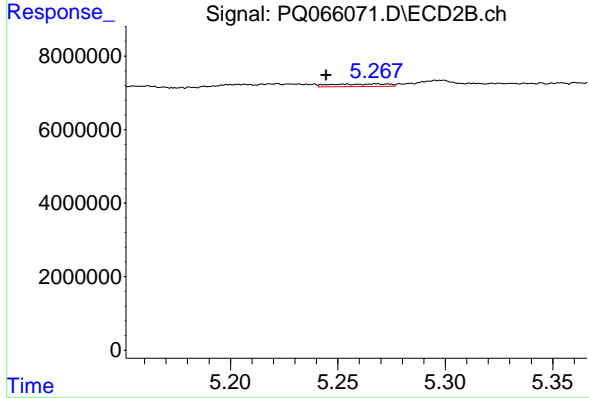
R.T.: 5.031 min
 Delta R.T.: 0.013 min
 Response: 1859783
 Conc: 3.21 ng/ml



#29 AR-1254-4

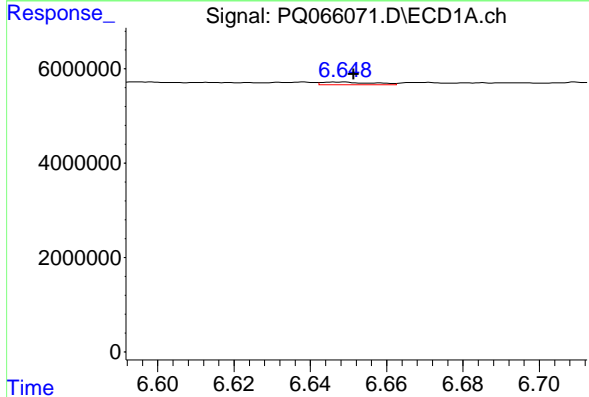
R.T.: 6.245 min
 Delta R.T.: 0.008 min
 Response: 83905
 Conc: 0.48 ng/ml

Instrument :
 ECD_Q
 ClientSampleId :
 HEXANE



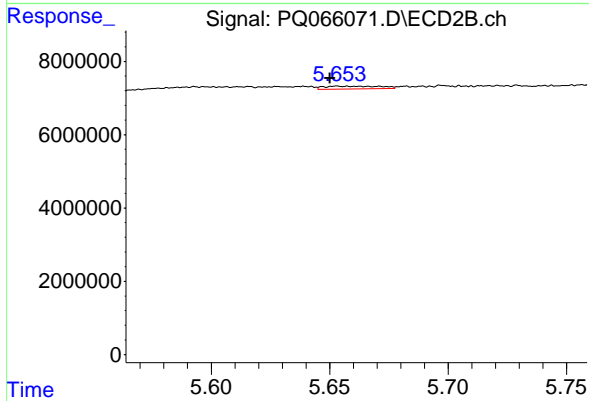
#29 AR-1254-4

R.T.: 5.268 min
 Delta R.T.: 0.023 min
 Response: 1310074
 Conc: 3.36 ng/ml



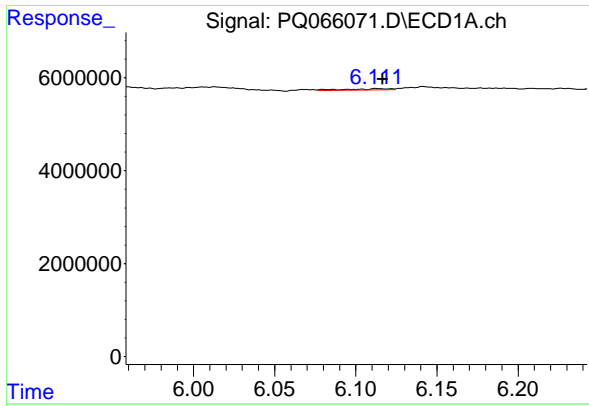
#30 AR-1254-5

R.T.: 6.647 min
 Delta R.T.: -0.004 min
 Response: 555682
 Conc: 2.88 ng/ml



#30 AR-1254-5

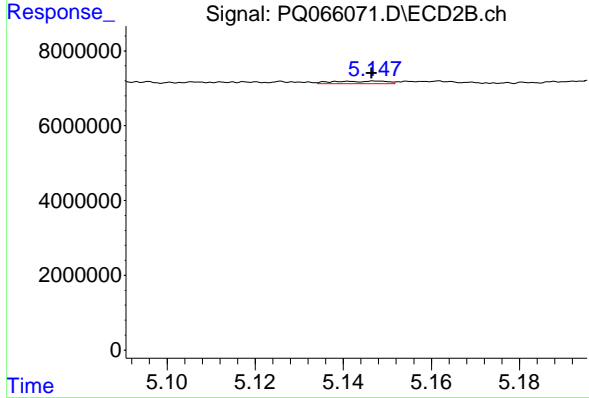
R.T.: 5.653 min
 Delta R.T.: 0.003 min
 Response: 1231315
 Conc: 2.16 ng/ml



#31 AR-1260-1

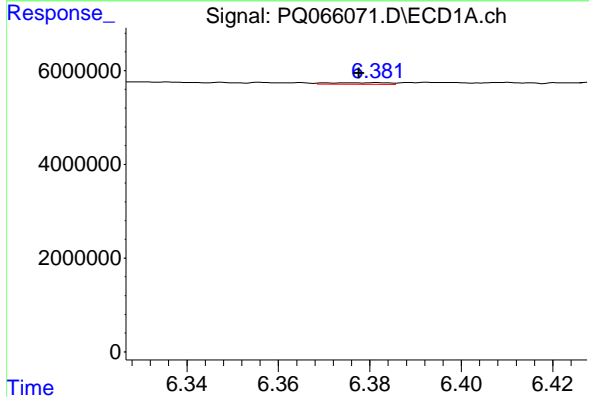
R.T.: 6.112 min
 Delta R.T.: -0.004 min
 Response: 523458
 Conc: 2.55 ng/ml

Instrument :
 ECD_Q
 ClientSampleId :
 HEXANE



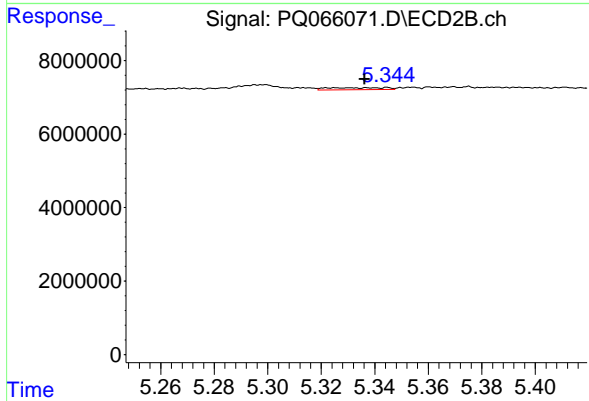
#31 AR-1260-1

R.T.: 5.148 min
 Delta R.T.: 0.001 min
 Response: 584784
 Conc: 1.23 ng/ml



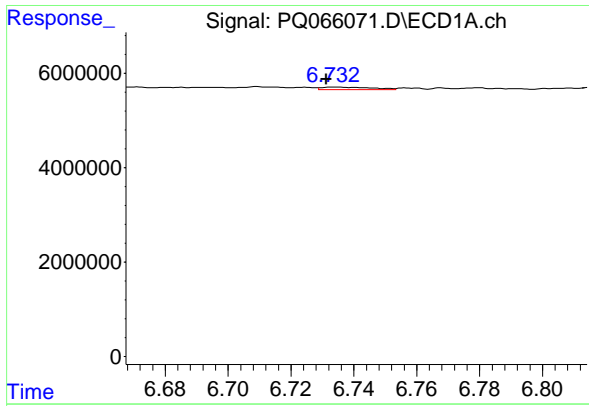
#32 AR-1260-2

R.T.: 6.382 min
 Delta R.T.: 0.004 min
 Response: 301244
 Conc: 1.21 ng/ml



#32 AR-1260-2

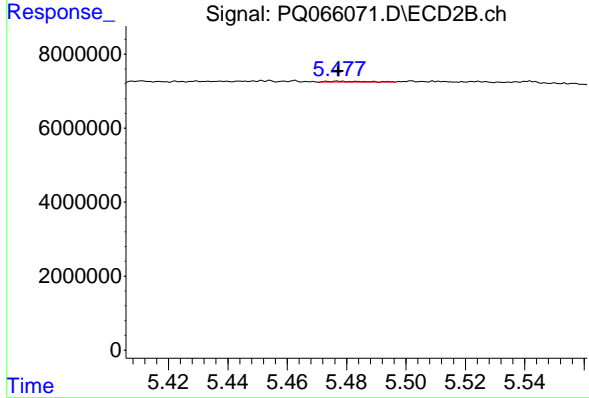
R.T.: 5.325 min
 Delta R.T.: -0.011 min
 Response: 839506
 Conc: 1.52 ng/ml



#33 AR-1260-3

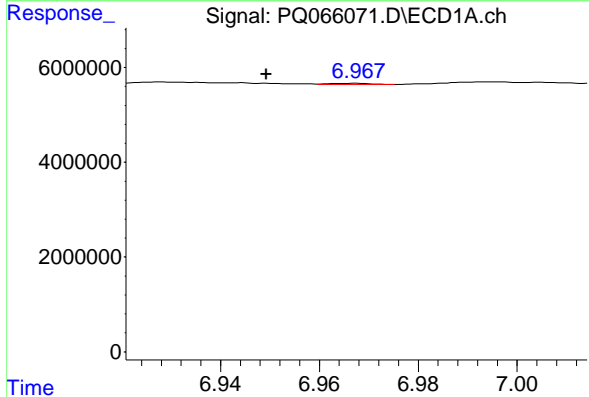
R.T.: 6.734 min
 Delta R.T.: 0.003 min
 Response: 601902
 Conc: 3.83 ng/ml

Instrument :
 ECD_Q
 ClientSampleId :
 HEXANE



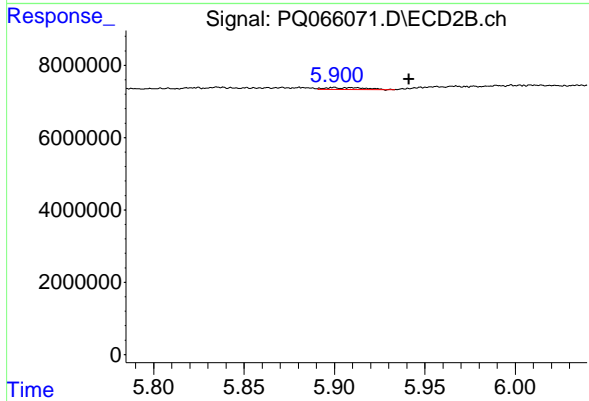
#33 AR-1260-3

R.T.: 5.477 min
 Delta R.T.: 0.000 min
 Response: 222153
 Conc: 0.42 ng/ml



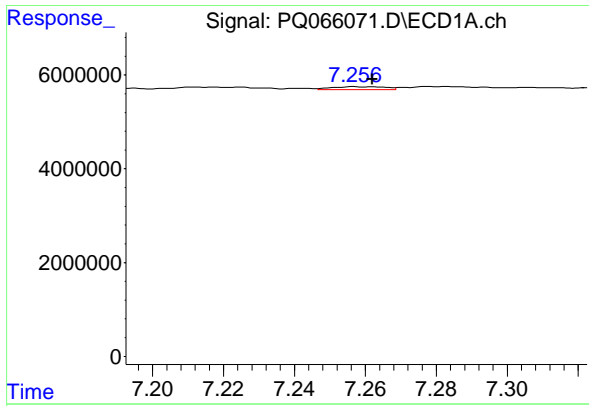
#34 AR-1260-4

R.T.: 6.967 min
 Delta R.T.: 0.018 min
 Response: 143560
 Conc: 0.77 ng/ml



#34 AR-1260-4

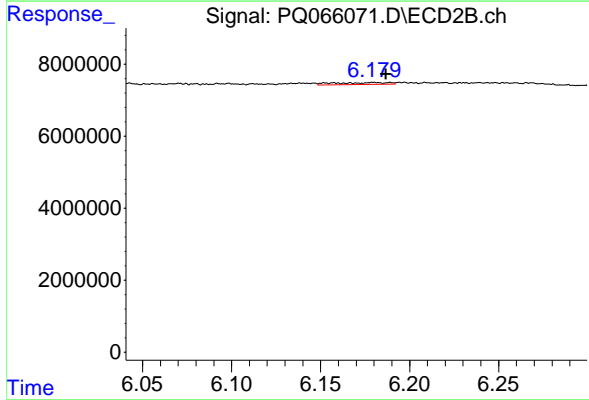
R.T.: 5.900 min
 Delta R.T.: -0.041 min
 Response: 807300
 Conc: 2.54 ng/ml



#35 AR-1260-5

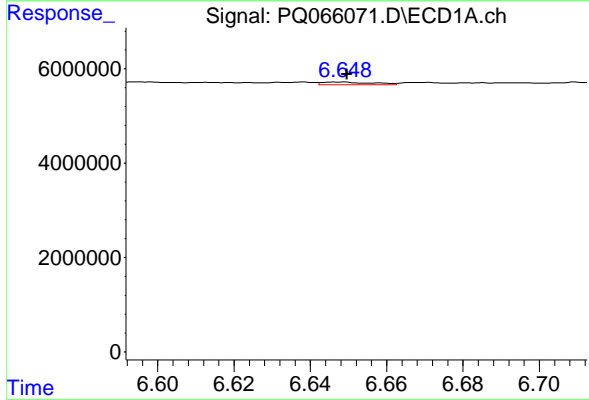
R.T.: 7.257 min
Delta R.T.: -0.005 min
Response: 681328
Conc: 2.01 ng/ml

Instrument :
ECD_Q
ClientSampleId :
HEXANE



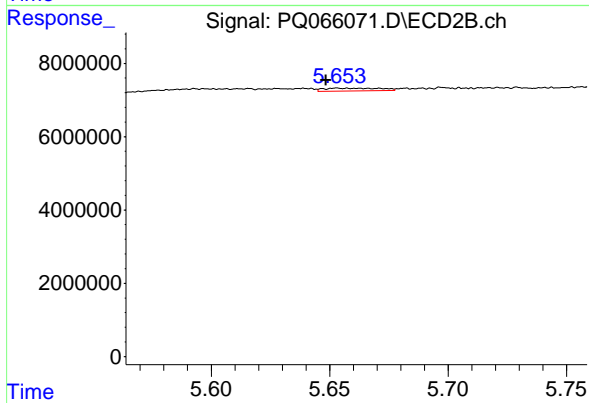
#35 AR-1260-5

R.T.: 6.180 min
Delta R.T.: -0.007 min
Response: 1128105
Conc: 1.26 ng/ml



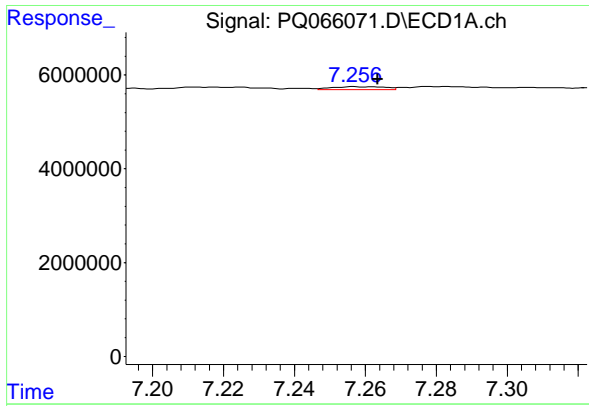
#36 AR-1262-1

R.T.: 6.647 min
Delta R.T.: -0.002 min
Response: 555682
Conc: 3.92 ng/ml



#36 AR-1262-1

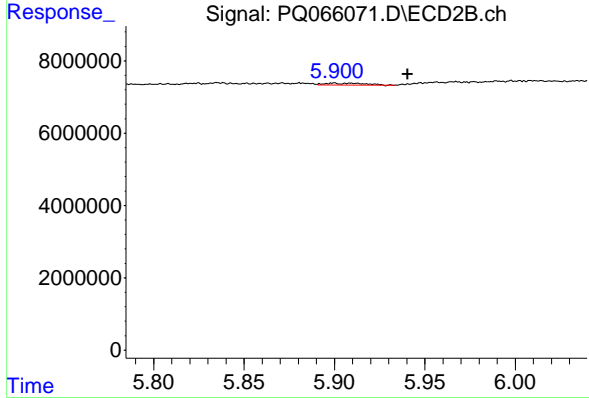
R.T.: 5.653 min
Delta R.T.: 0.004 min
Response: 1231315
Conc: 4.49 ng/ml



#37 AR-1262-2

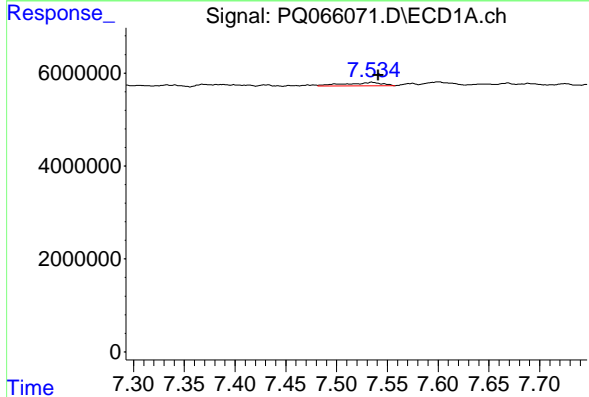
R.T.: 7.257 min
 Delta R.T.: -0.007 min
 Response: 681328
 Conc: 1.95 ng/ml

Instrument :
 ECD_Q
 ClientSampleId :
 HEXANE



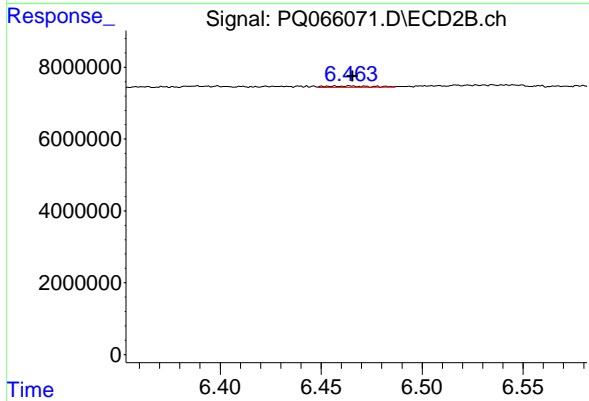
#37 AR-1262-2

R.T.: 5.900 min
 Delta R.T.: -0.041 min
 Response: 807300
 Conc: 1.58 ng/ml



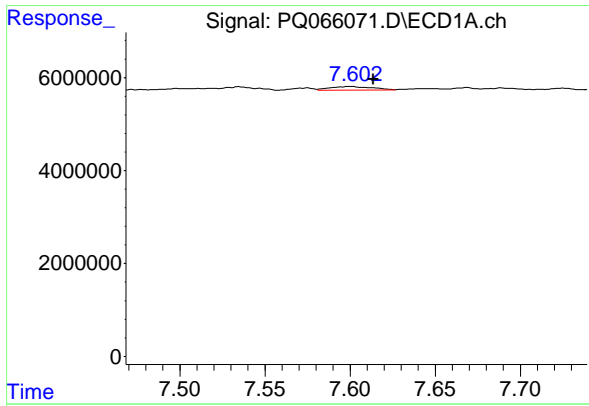
#38 AR-1262-3

R.T.: 7.535 min
 Delta R.T.: -0.006 min
 Response: 1909675
 Conc: 7.43 ng/ml



#38 AR-1262-3

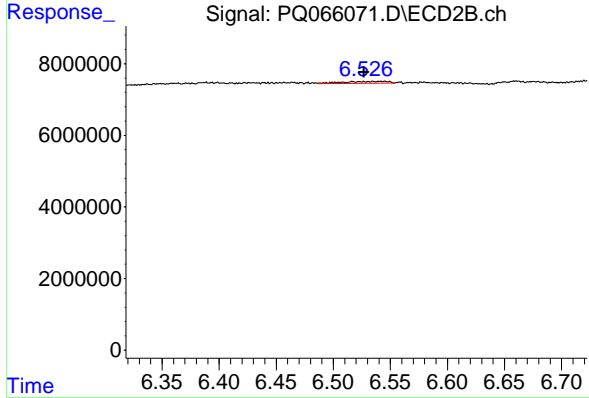
R.T.: 6.457 min
 Delta R.T.: -0.009 min
 Response: 638785
 Conc: 1.47 ng/ml



#39 AR-1262-4

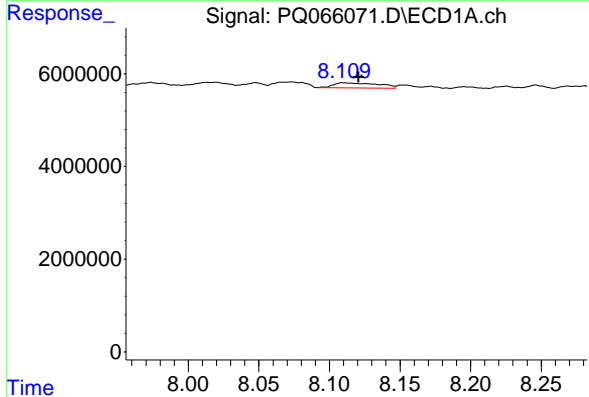
R.T.: 7.600 min
 Delta R.T.: -0.014 min
 Response: 1367906
 Conc: 6.90 ng/ml

Instrument :
 ECD_Q
 ClientSampleId :
 HEXANE



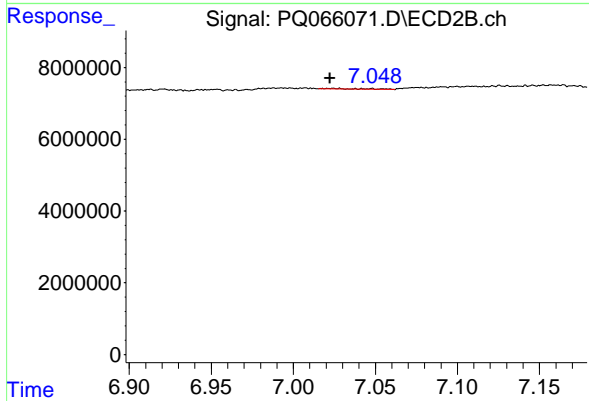
#39 AR-1262-4

R.T.: 6.527 min
 Delta R.T.: 0.000 min
 Response: 1418370
 Conc: 1.92 ng/ml



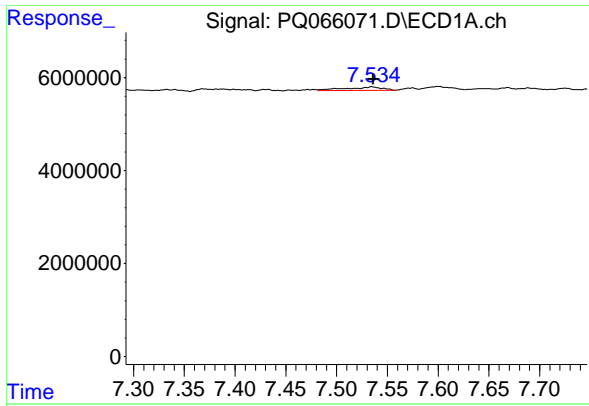
#40 AR-1262-5

R.T.: 8.110 min
 Delta R.T.: -0.011 min
 Response: 2460481
 Conc: 19.83 ng/ml



#40 AR-1262-5

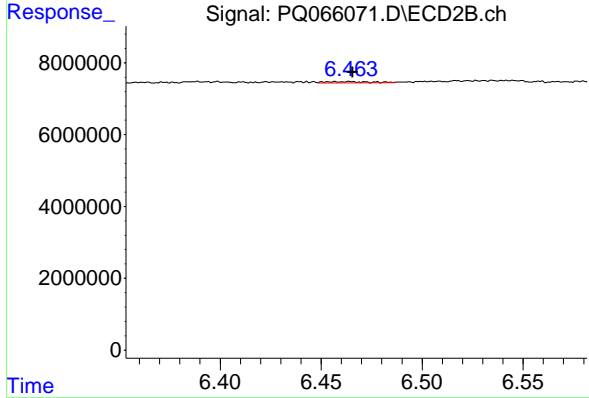
R.T.: 7.028 min
 Delta R.T.: 0.006 min
 Response: 225028
 Conc: 0.65 ng/ml



#41 AR-1268-1

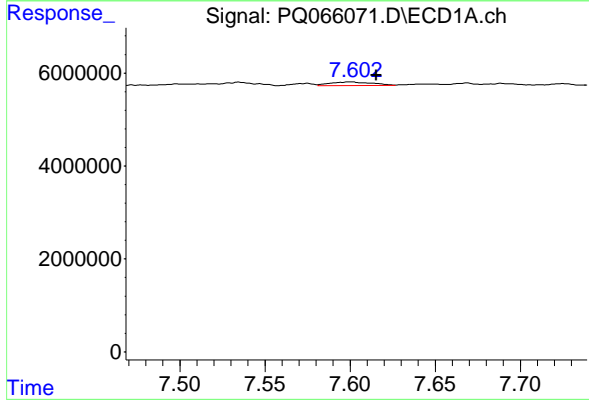
R.T.: 7.535 min
 Delta R.T.: -0.002 min
 Response: 1909675
 Conc: 4.18 ng/ml

Instrument :
 ECD_Q
 ClientSampleId :
 HEXANE



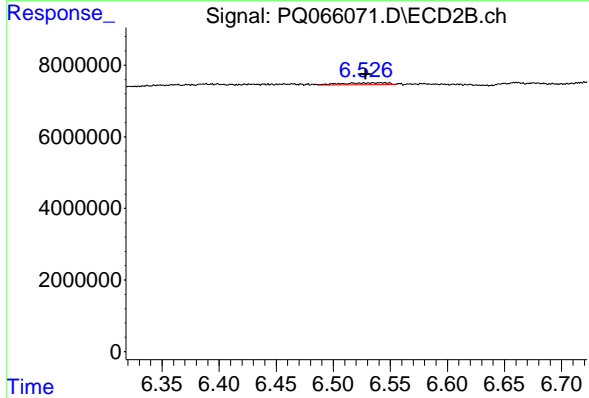
#41 AR-1268-1

R.T.: 6.457 min
 Delta R.T.: -0.008 min
 Response: 638785
 Conc: 0.51 ng/ml



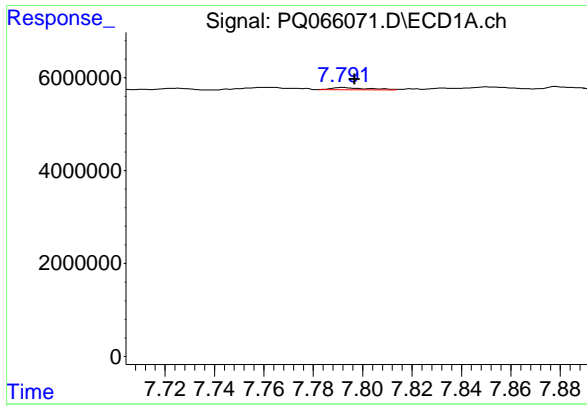
#42 AR-1268-2

R.T.: 7.600 min
 Delta R.T.: -0.015 min
 Response: 1367906
 Conc: 3.26 ng/ml



#42 AR-1268-2

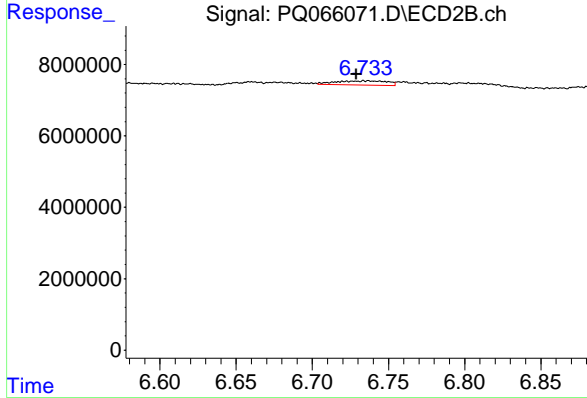
R.T.: 6.527 min
 Delta R.T.: -0.002 min
 Response: 1418370
 Conc: 1.24 ng/ml



#43 AR-1268-3

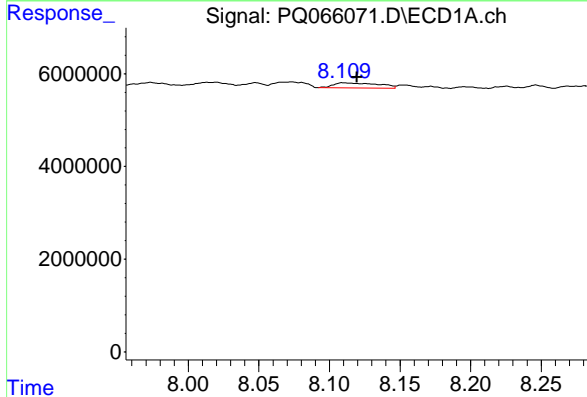
R.T.: 7.792 min
 Delta R.T.: -0.005 min
 Response: 465149
 Conc: 1.35 ng/ml

Instrument :
 ECD_Q
 ClientSampleId :
 HEXANE



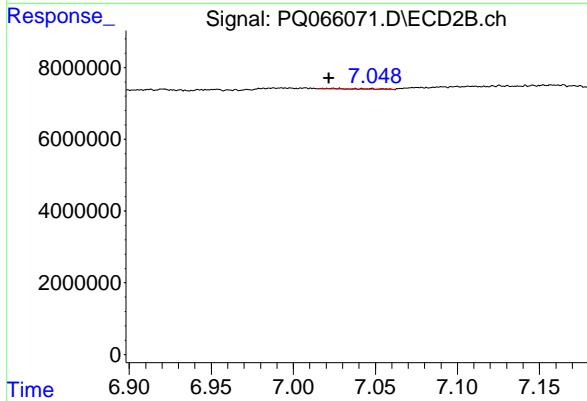
#43 AR-1268-3

R.T.: 6.729 min
 Delta R.T.: 0.000 min
 Response: 2721360
 Conc: 2.79 ng/ml



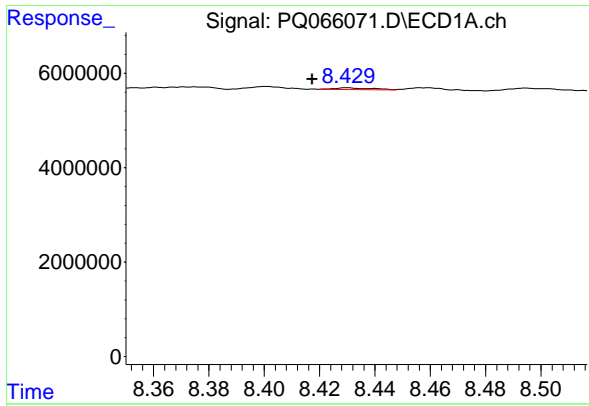
#44 AR-1268-4

R.T.: 8.110 min
 Delta R.T.: -0.010 min
 Response: 2460481
 Conc: 16.44 ng/ml



#44 AR-1268-4

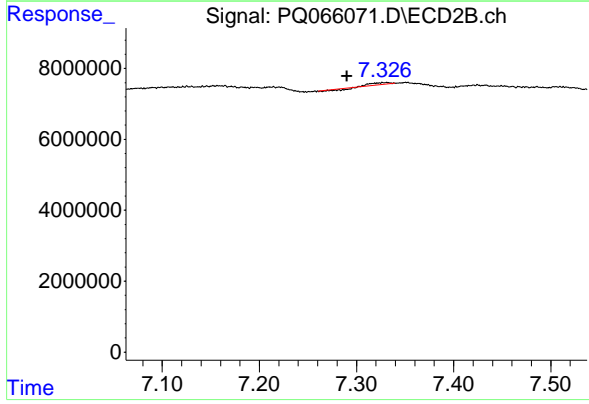
R.T.: 7.028 min
 Delta R.T.: 0.006 min
 Response: 225028
 Conc: 0.53 ng/ml



#45 AR-1268-5

R.T.: 8.430 min
 Delta R.T.: 0.013 min
 Response: 329299
 Conc: 0.33 ng/ml

Instrument :
 ECD_Q
 ClientSampleId :
 HEXANE



#45 AR-1268-5

R.T.: 7.331 min
 Delta R.T.: 0.041 min
 Response: 482029
 Conc: 0.17 ng/ml