

Data Path : Z:\pestpcbsrv\HPCHEM1\ECD_Q\Data\PQ041524\
 Data File : PQ066097.D
 Signal(s) : Signal #1: ECD1A.ch Signal #2: ECD2B.ch
 Acq On : 15 Apr 2024 18:16
 Operator : YP\AJ
 Sample : P2122-02
 Misc :
 ALS Vial : 22 Sample Multiplier: 1

Instrument :
 ECD_Q
 ClientSampleId :
 M-R-PIPE

Integration File signal 1: autoint1.e
 Integration File signal 2: autoint2.e
 Quant Time: Apr 16 01:30:22 2024
 Quant Method : Z:\pestpcbsrv\HPCHEM1\ECD_Q\Method\PQ031824.M
 Quant Title : GC EXTRACTABLES
 QLast Update : Tue Mar 19 12:55:45 2024
 Response via : Initial Calibration
 Integrator: ChemStation

Volume Inj. : 2 µl
 Signal #1 Phase : ZB-MR1 Signal #2 Phase: ZB-MR2
 Signal #1 Info : 30Mx0.32mmx 0.50µ Signal #2 Info : 30M x 0.32mm x 0.25µm

Compound	RT#1	RT#2	Resp#1	Resp#2	ng/ml	ng/ml
----------	------	------	--------	--------	-------	-------

System Monitoring Compounds

1) SA Tetrachlo...	3.448	2.735	91851108	142.8E6	18.480	19.252
2) SA Decachlor...	8.662	7.502	65954689	178.8E6	22.728	21.393

Target Compounds

3) L1 AR-1016-1	4.559	3.734	128.0E6	238.4E6	817.444	847.890
4) L1 AR-1016-2	4.579	3.749	211.6E6	258.7E6	923.307	636.064 #
5) L1 AR-1016-3	4.636	3.910	116.4E6	172.7E6	809.915	774.320
6) L1 AR-1016-4	4.729	3.959	80430571	5099.3E6	698.940	26714.831 #
7) L1 AR-1016-5	5.017	4.153	1791.6E6	3236.1E6	16072.688	14253.731
8) L2 AR-1221-1	3.639	2.936	4318346	5171590	84.260	61.628 #
9) L2 AR-1221-2	3.729	3.013	5371611	6987259	138.536	107.523
10) L2 AR-1221-3	3.800	3.080	23681426	37126987	200.983	190.101
11) L3 AR-1232-1	3.800	3.080	23681426	37126987	241.724	226.536
12) L3 AR-1232-2	4.298	3.749	70183052	258.7E6	1397.167	1495.995
13) L3 AR-1232-3	4.579	3.910	211.6E6	172.7E6	2230.826	1850.268
14) L3 AR-1232-4	4.729	3.994	80430571	1610.5E6	1707.954	20185.355 #
15) L3 AR-1232-5	4.826	4.153	3026.7E6	3236.1E6	94491.981	35874.089 #
16) L4 AR-1242-1	4.559	3.734	128.0E6	238.4E6	1194.535	1203.714
17) L4 AR-1242-2	4.579	3.749	211.6E6	258.7E6	1362.318	924.789 #
18) L4 AR-1242-3	4.636	3.910	116.4E6	172.7E6	1173.256	1110.736
19) L4 AR-1242-4	4.729	3.994	80430571	1610.5E6	983.643	10785.667 #
20) L4 AR-1242-5	5.450	4.490	1901.5E6	15159.5E6	23347.277	74612.068 #
21) L5 AR-1248-1	4.559	3.734	128.0E6	238.4E6	1585.212	1547.123
22) L5 AR-1248-2	4.826	3.959	3026.7E6	5099.3E6	27023.892	22144.468
23) L5 AR-1248-3	5.017	3.994	1791.6E6	1610.5E6	13315.314	7288.460 #
24) L5 AR-1248-4	5.413	4.153	3109.1E6	3236.1E6	21769.334	11929.954 #
25) L5 AR-1248-5	5.450	4.526	1901.5E6	2068.7E6	13273.364	7655.303 #
26) L6 AR-1254-1	5.385	4.490	5896.0E6	15159.5E6	38900.269	37716.427
27) L6 AR-1254-2	5.603	4.637	10207.6E6	15199.6E6	44348.105	41348.004
28) L6 AR-1254-3	5.958	5.018	12757.3E6	25978.5E6	53903.092	44803.598
29) L6 AR-1254-4	6.244	5.244	10440.5E6	19027.2E6	59727.090	48868.595
30) L6 AR-1254-5	6.657	5.650	10444.6E6	25828.7E6	54134.506	45251.475
31) L7 AR-1260-1	6.123	5.147	4745.6E6	12591.3E6	23135.728	26393.907
32) L7 AR-1260-2	6.384	5.337	5618.8E6	11422.5E6	22596.129	20744.374
33) L7 AR-1260-3	6.738	5.474	523.8E6	10804.0E6	3329.962	20558.979 #
34) L7 AR-1260-4	6.934	5.941	3965.5E6	1305.1E6	21194.504	4102.432 #
35) L7 AR-1260-5	7.268	6.187	1578.5E6	3967.7E6	4653.396	4448.287
36) L8 AR-1262-1	6.657	5.650	10444.6E6	25828.7E6	73624.025	94168.286 #
37) L8 AR-1262-2	7.268	5.941	1578.5E6	1305.1E6	4515.517	2548.946 #
38) L8 AR-1262-3	7.549	6.464	1125.9E6	338.6E6	4383.168	781.721 #
39) L8 AR-1262-4	7.592	6.521	397.6E6	3238.1E6	2007.118	4376.295 #
40) L8 AR-1262-5	8.123	7.020	170.5E6	433.6E6	1374.161	1254.699
41) L9 AR-1268-1	7.549	6.464	1125.9E6	338.6E6	2461.695	272.761 #

Data Path : Z:\pestpcbsrv\HPCHEM1\ECD_Q\Data\PQ041524\
 Data File : PQ066097.D
 Signal(s) : Signal #1: ECD1A.ch Signal #2: ECD2B.ch
 Acq On : 15 Apr 2024 18:16
 Operator : YP\AJ
 Sample : P2122-02
 Misc :
 ALS Vial : 22 Sample Multiplier: 1

Instrument :
 ECD_Q
ClientSampleId :
 M-R-PIPE

Integration File signal 1: autoint1.e
 Integration File signal 2: autoint2.e
 Quant Time: Apr 16 01:30:22 2024
 Quant Method : Z:\pestpcbsrv\HPCHEM1\ECD_Q\Method\PQ031824.M
 Quant Title : GC EXTRACTABLES
 QLast Update : Tue Mar 19 12:55:45 2024
 Response via : Initial Calibration
 Integrator: ChemStation

Volume Inj. : 2 µl
 Signal #1 Phase : ZB-MR1 Signal #2 Phase: ZB-MR2
 Signal #1 Info : 30Mx0.32mmx 0.50µ Signal #2 Info : 30M x 0.32mm x 0.25µm

	Compound	RT#1	RT#2	Resp#1	Resp#2	ng/ml	ng/ml
42)	L9 AR-1268-2	7.592	6.521	397.6E6	3238.1E6	948.704	2835.666 #
43)	L9 AR-1268-3	7.801	6.726	24285227	37916229	70.705	38.872 #
44)	L9 AR-1268-4	8.123	7.020	170.5E6	433.6E6	1139.655	1024.156
45)	L9 AR-1268-5	8.420	7.288	58794320	151.0E6	59.506	52.929

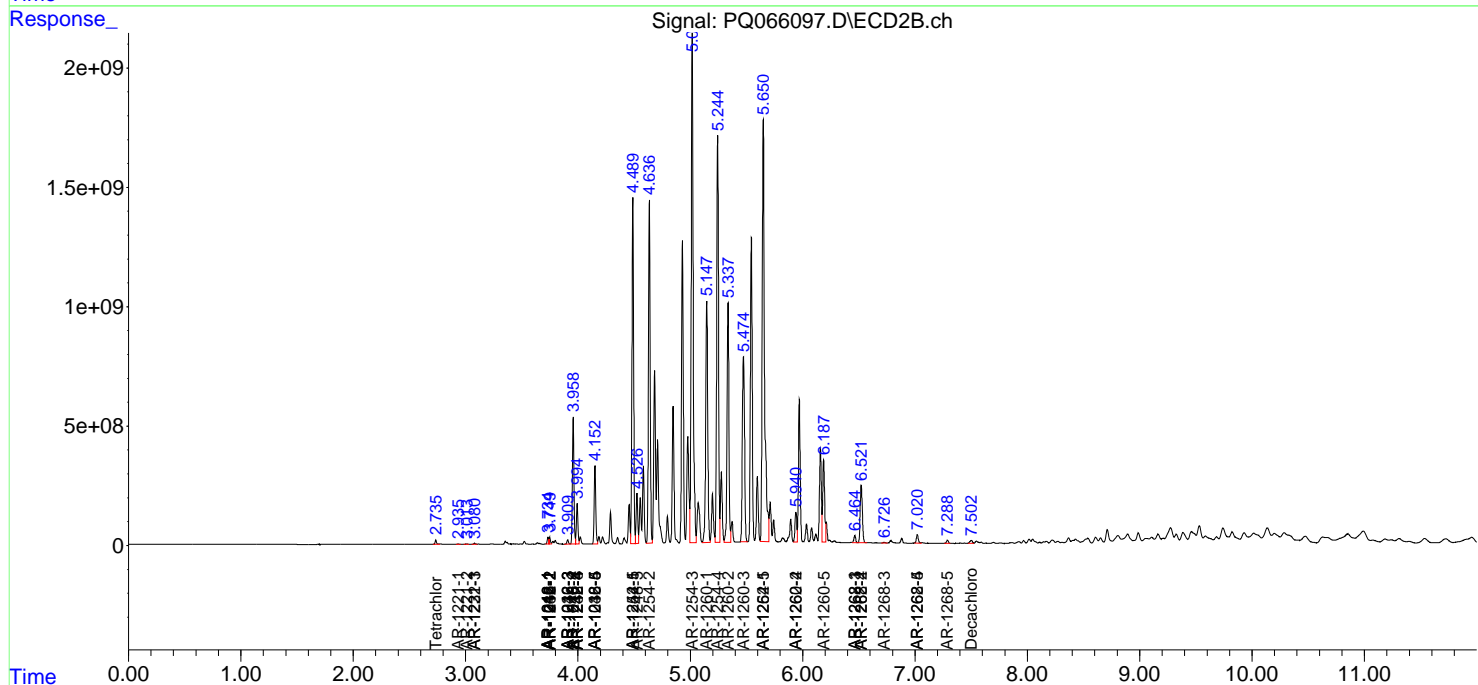
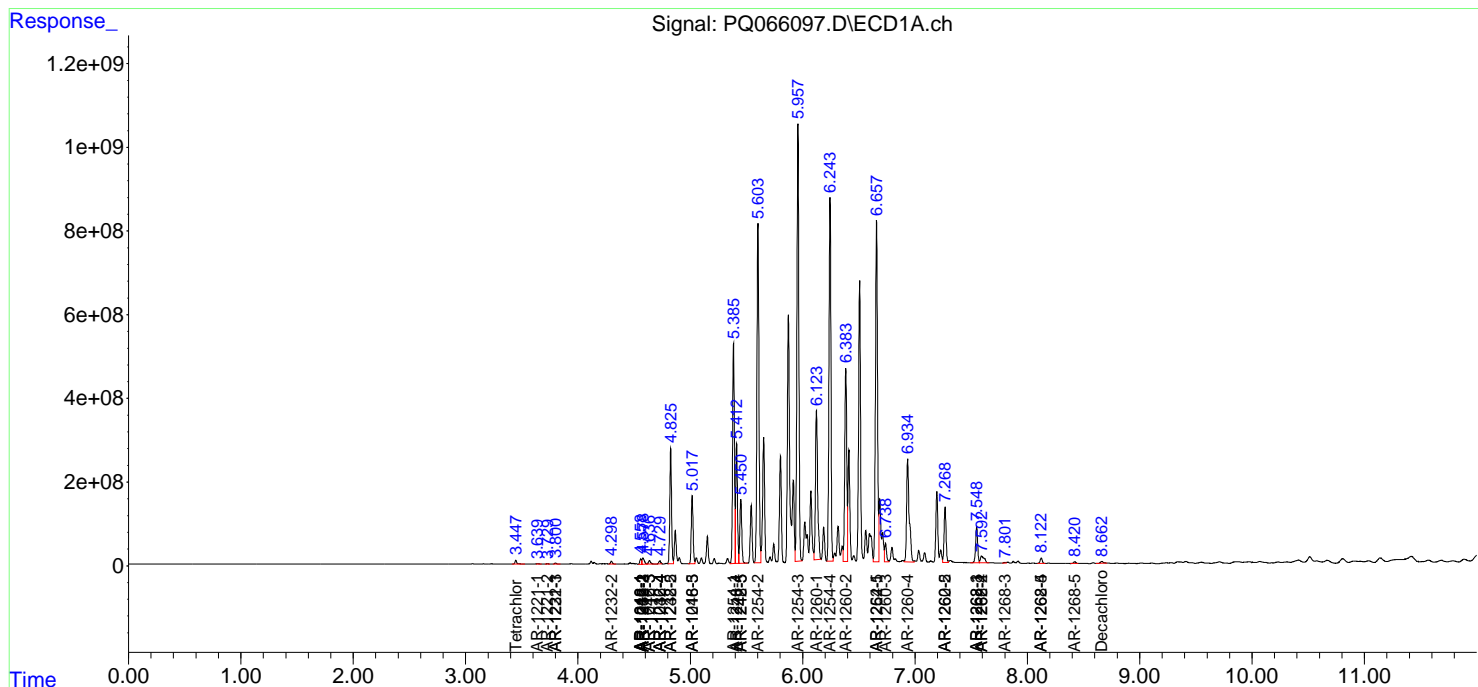
(f)=RT Delta > 1/2 Window (#)=Amounts differ by > 25% (m)=manual int.

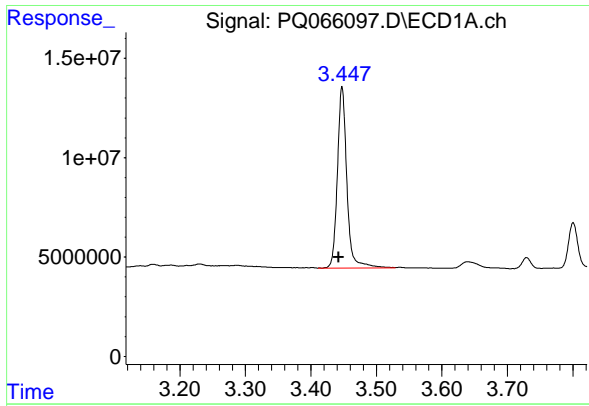
Data Path : Z:\pestpcbsrv\HPCHEM1\ECD_Q\Data\PQ041524\
 Data File : PQ066097.D
 Signal(s) : Signal #1: ECD1A.ch Signal #2: ECD2B.ch
 Acq On : 15 Apr 2024 18:16
 Operator : YP\AJ
 Sample : P2122-02
 Misc :
 ALS Vial : 22 Sample Multiplier: 1

Instrument :
 ECD_Q
 ClientSampleId :
 M-R-PIPE

Integration File signal 1: autoint1.e
 Integration File signal 2: autoint2.e
 Quant Time: Apr 16 01:30:22 2024
 Quant Method : Z:\pestpcbsrv\HPCHEM1\ECD_Q\Method\PQ031824.M
 Quant Title : GC EXTRACTABLES
 QLast Update : Tue Mar 19 12:55:45 2024
 Response via : Initial Calibration
 Integrator: ChemStation

Volume Inj. : 2 µl
 Signal #1 Phase : ZB-MR1 Signal #2 Phase: ZB-MR2
 Signal #1 Info : 30Mx0.32mmx 0.50µm Signal #2 Info : 30M x 0.32mm x 0.25µm

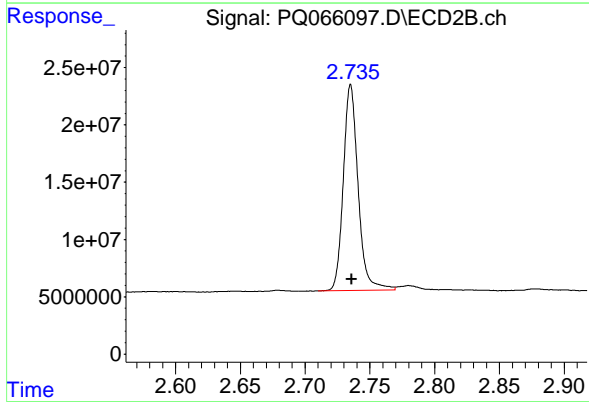




#1 Tetrachloro-m-xylene

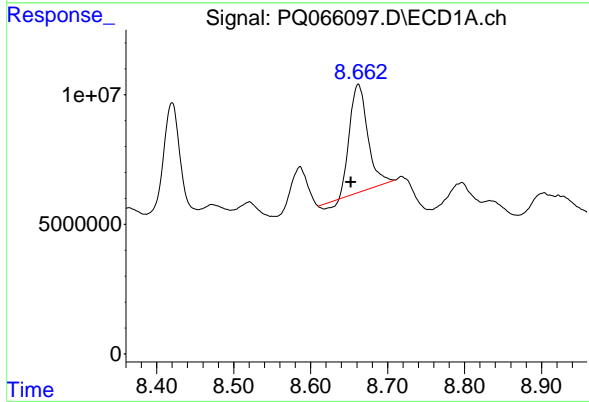
R.T.: 3.448 min
 Delta R.T.: 0.006 min
 Response: 91851108
 Conc: 18.48 ng/ml

Instrument : ECD_Q
 ClientSampleId : M-R-PIPE



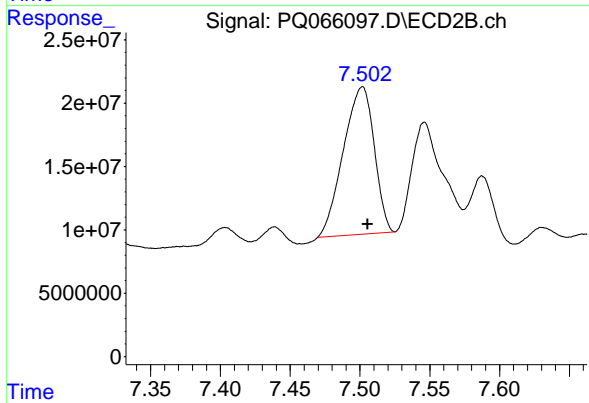
#1 Tetrachloro-m-xylene

R.T.: 2.735 min
 Delta R.T.: 0.000 min
 Response: 142759634
 Conc: 19.25 ng/ml



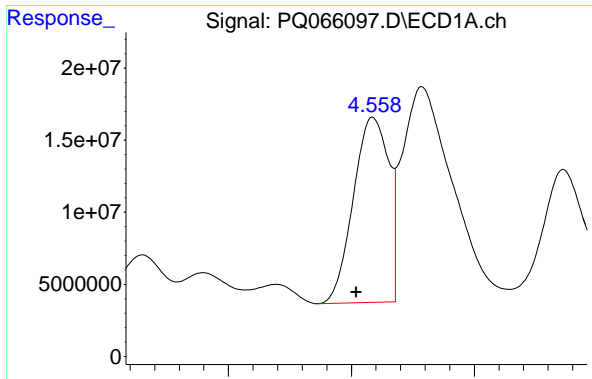
#2 Decachlorobiphenyl

R.T.: 8.662 min
 Delta R.T.: 0.009 min
 Response: 65954689
 Conc: 22.73 ng/ml



#2 Decachlorobiphenyl

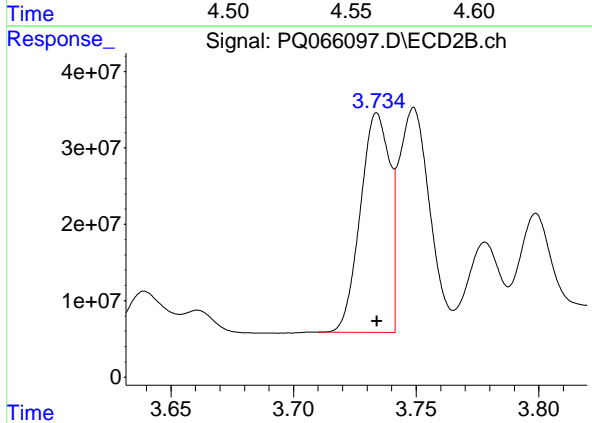
R.T.: 7.502 min
 Delta R.T.: -0.004 min
 Response: 178777890
 Conc: 21.39 ng/ml



#3 AR-1016-1

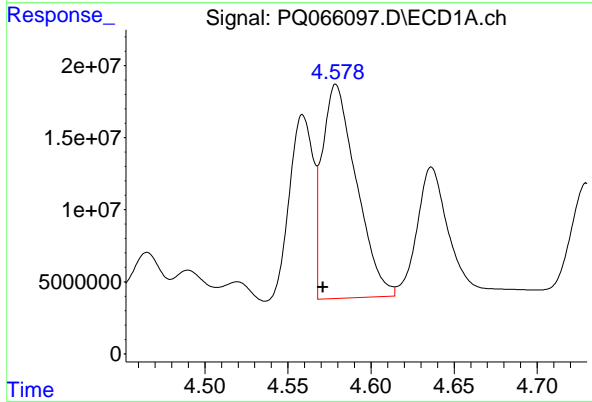
R.T.: 4.559 min
 Delta R.T.: 0.007 min
 Response: 128028185
 Conc: 817.44 ng/ml

Instrument :
 ECD_Q
 ClientSampleId :
 M-R-PIPE



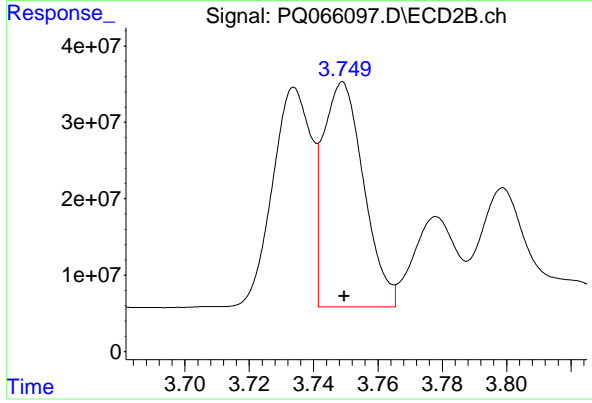
#3 AR-1016-1

R.T.: 3.734 min
 Delta R.T.: 0.000 min
 Response: 238361113
 Conc: 847.89 ng/ml



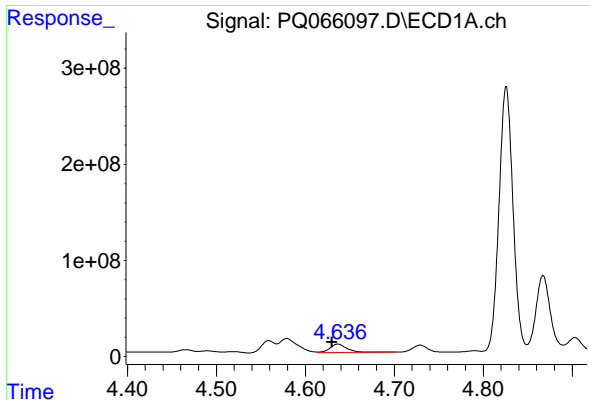
#4 AR-1016-2

R.T.: 4.579 min
 Delta R.T.: 0.008 min
 Response: 211634942
 Conc: 923.31 ng/ml



#4 AR-1016-2

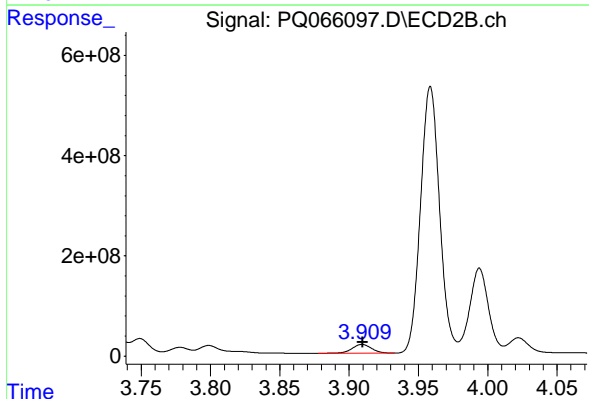
R.T.: 3.749 min
 Delta R.T.: 0.000 min
 Response: 258696328
 Conc: 636.06 ng/ml



#5 AR-1016-3

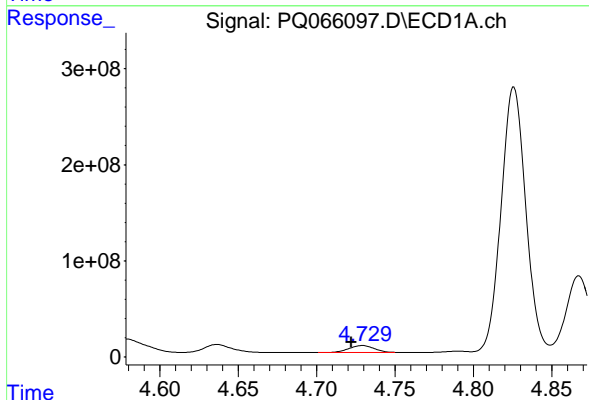
R.T.: 4.636 min
 Delta R.T.: 0.007 min
 Response: 116367816
 Conc: 809.91 ng/ml

Instrument :
 ECD_Q
 ClientSampleId :
 M-R-PIPE



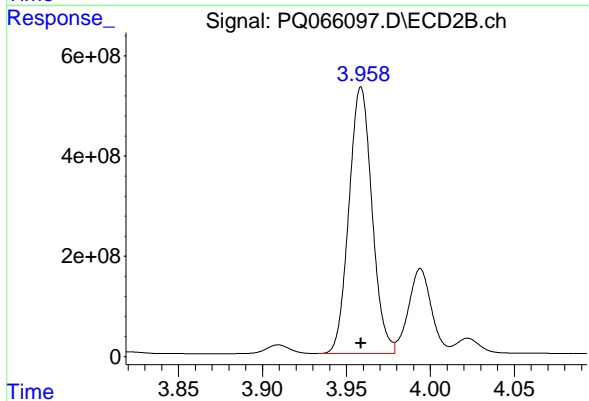
#5 AR-1016-3

R.T.: 3.910 min
 Delta R.T.: 0.000 min
 Response: 172725477
 Conc: 774.32 ng/ml



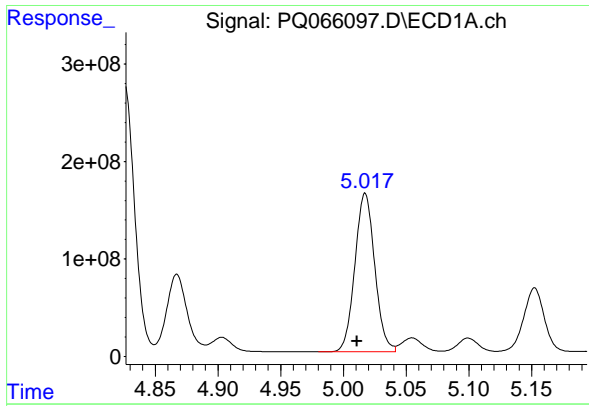
#6 AR-1016-4

R.T.: 4.729 min
 Delta R.T.: 0.007 min
 Response: 80430571
 Conc: 698.94 ng/ml



#6 AR-1016-4

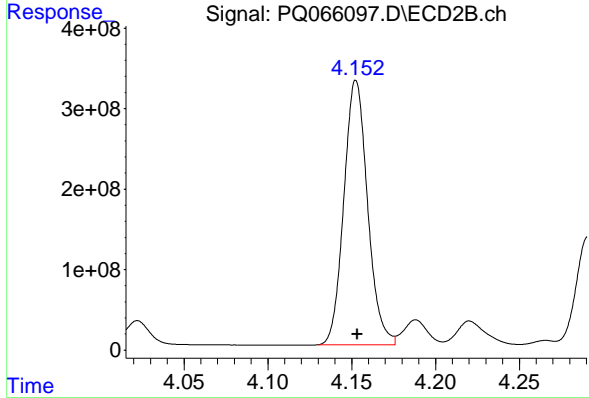
R.T.: 3.959 min
 Delta R.T.: 0.000 min
 Response: 5099264959
 Conc: 26714.83 ng/ml



#7 AR-1016-5

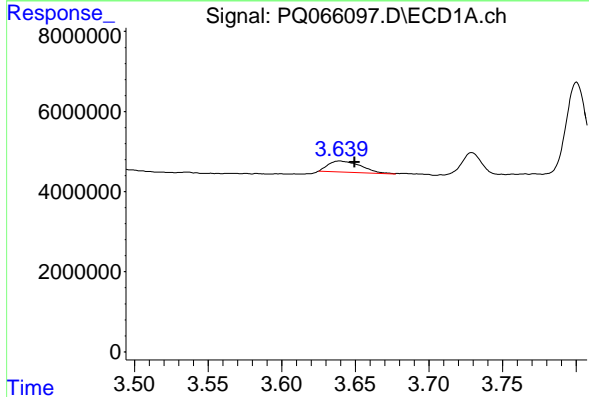
R.T.: 5.017 min
 Delta R.T.: 0.006 min
 Response: 1791633338
 Conc: 16072.69 ng/ml

Instrument :
 ECD_Q
 ClientSampleId :
 M-R-PIPE



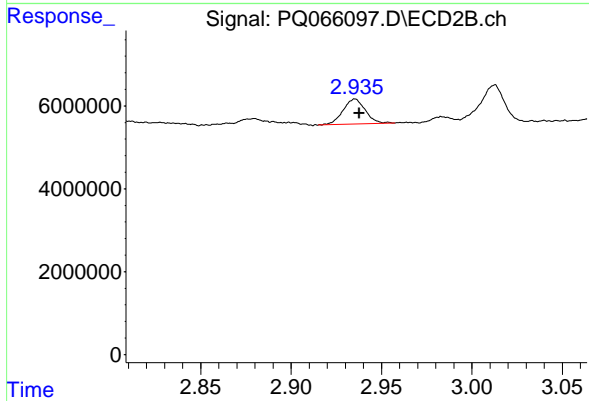
#7 AR-1016-5

R.T.: 4.153 min
 Delta R.T.: 0.000 min
 Response: 3236090624
 Conc: 14253.73 ng/ml



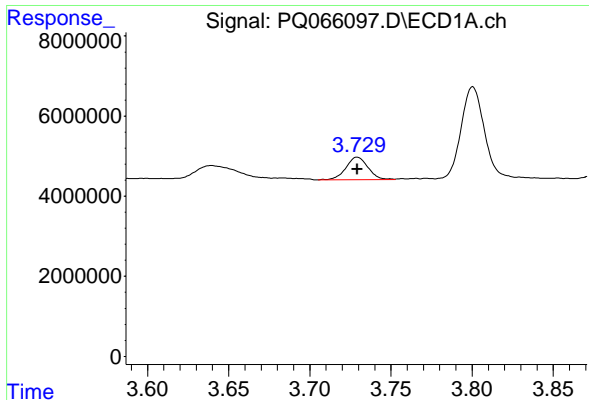
#8 AR-1221-1

R.T.: 3.639 min
 Delta R.T.: -0.010 min
 Response: 4318346
 Conc: 84.26 ng/ml



#8 AR-1221-1

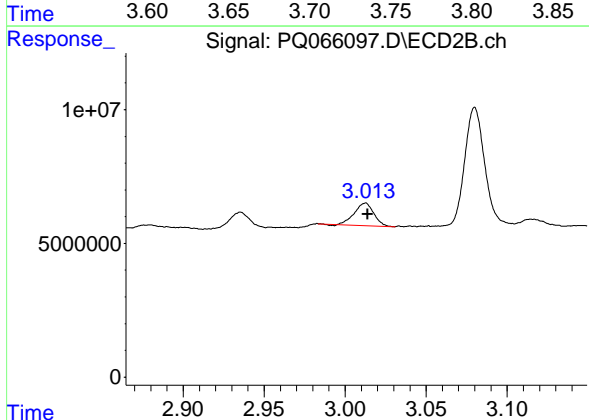
R.T.: 2.936 min
 Delta R.T.: -0.002 min
 Response: 5171590
 Conc: 61.63 ng/ml



#9 AR-1221-2

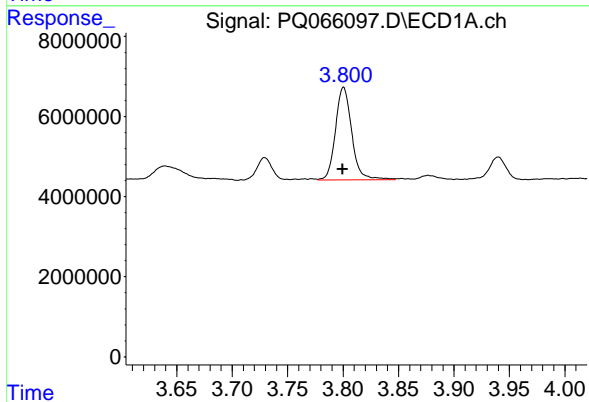
R.T.: 3.729 min
 Delta R.T.: 0.000 min
 Response: 5371611
 Conc: 138.54 ng/ml

Instrument :
 ECD_Q
 ClientSampleId :
 M-R-PIPE



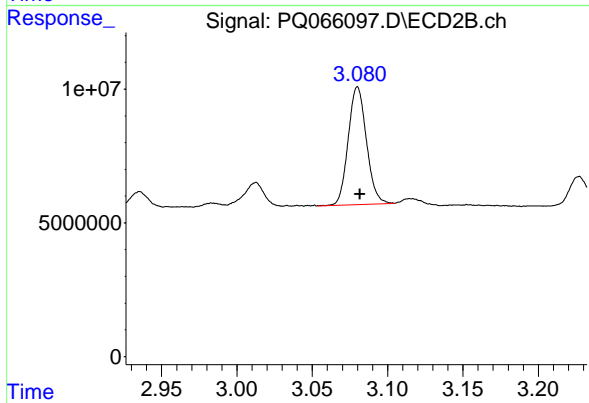
#9 AR-1221-2

R.T.: 3.013 min
 Delta R.T.: -0.001 min
 Response: 6987259
 Conc: 107.52 ng/ml



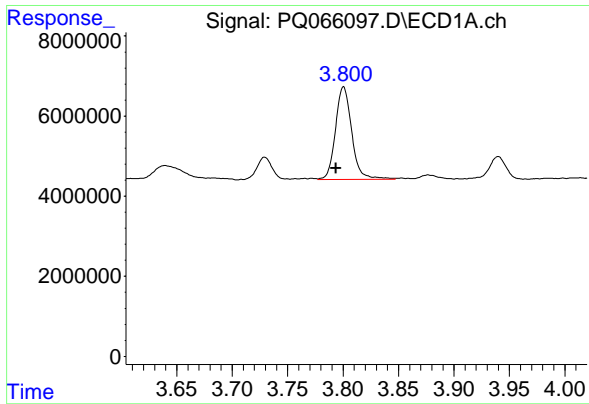
#10 AR-1221-3

R.T.: 3.800 min
 Delta R.T.: 0.000 min
 Response: 23681426
 Conc: 200.98 ng/ml



#10 AR-1221-3

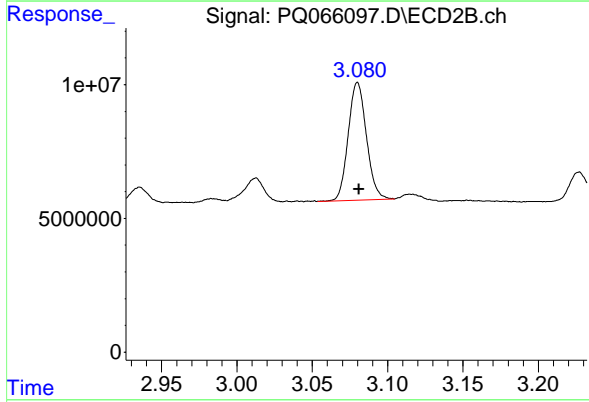
R.T.: 3.080 min
 Delta R.T.: -0.002 min
 Response: 37126987
 Conc: 190.10 ng/ml



#11 AR-1232-1

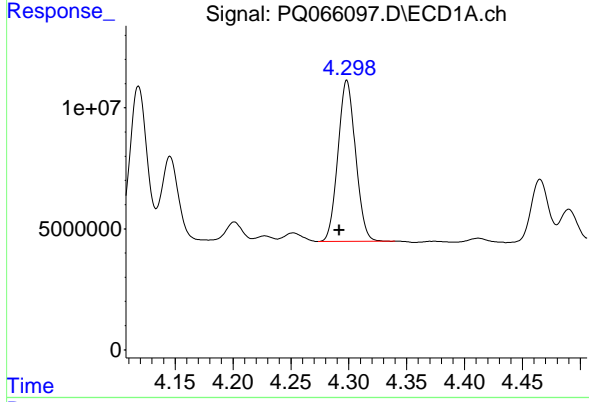
R.T.: 3.800 min
 Delta R.T.: 0.007 min
 Response: 23681426
 Conc: 241.72 ng/ml

Instrument :
 ECD_Q
 ClientSampleId :
 M-R-PIPE



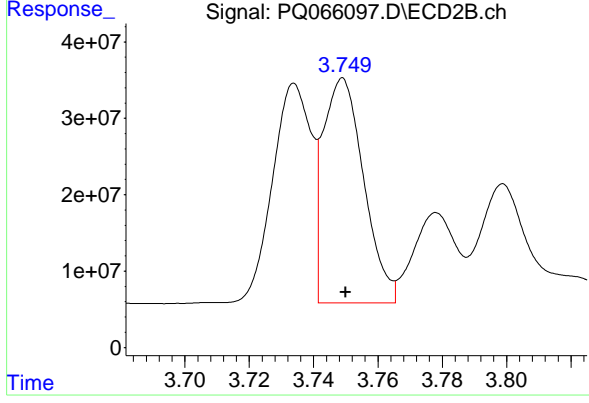
#11 AR-1232-1

R.T.: 3.080 min
 Delta R.T.: 0.000 min
 Response: 37126987
 Conc: 226.54 ng/ml



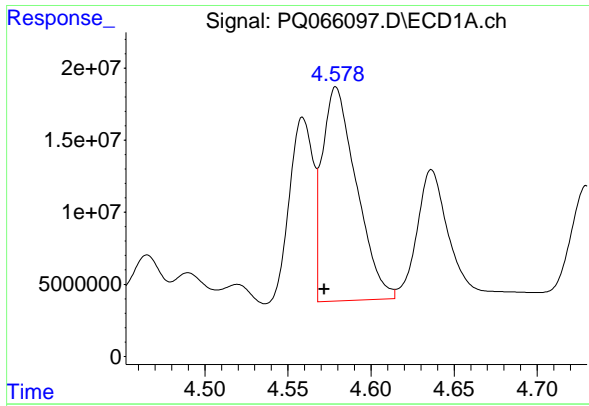
#12 AR-1232-2

R.T.: 4.298 min
 Delta R.T.: 0.007 min
 Response: 70183052
 Conc: 1397.17 ng/ml



#12 AR-1232-2

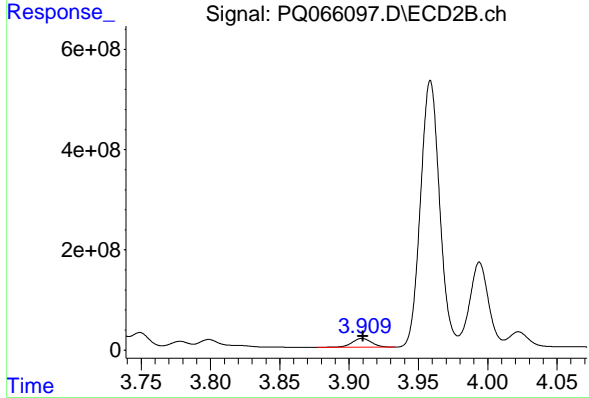
R.T.: 3.749 min
 Delta R.T.: 0.000 min
 Response: 258696328
 Conc: 1495.99 ng/ml



#13 AR-1232-3

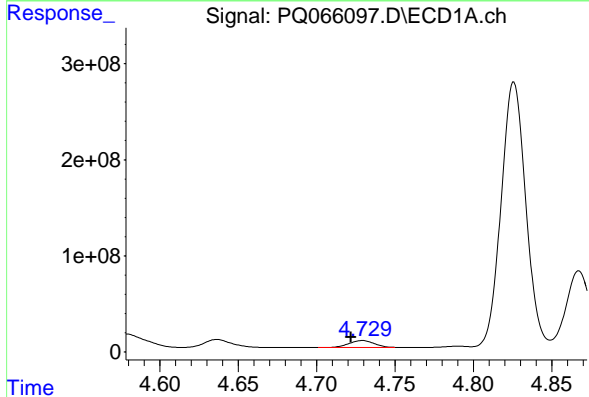
R.T.: 4.579 min
 Delta R.T.: 0.007 min
 Response: 211634942
 Conc: 2230.83 ng/ml

Instrument :
 ECD_Q
 ClientSampleId :
 M-R-PIPE



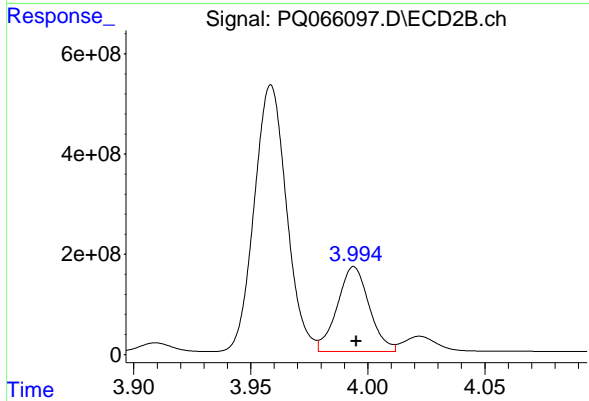
#13 AR-1232-3

R.T.: 3.910 min
 Delta R.T.: 0.000 min
 Response: 172725477
 Conc: 1850.27 ng/ml



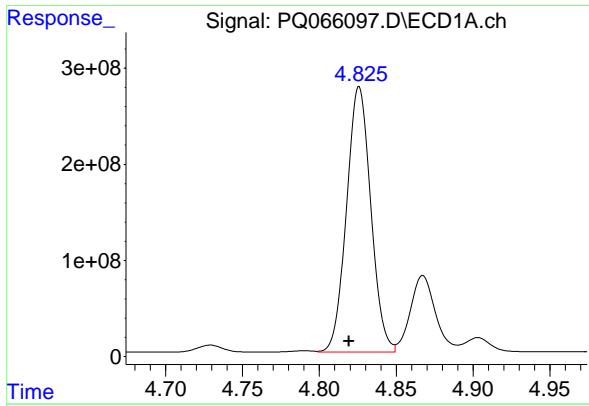
#14 AR-1232-4

R.T.: 4.729 min
 Delta R.T.: 0.007 min
 Response: 80430571
 Conc: 1707.95 ng/ml



#14 AR-1232-4

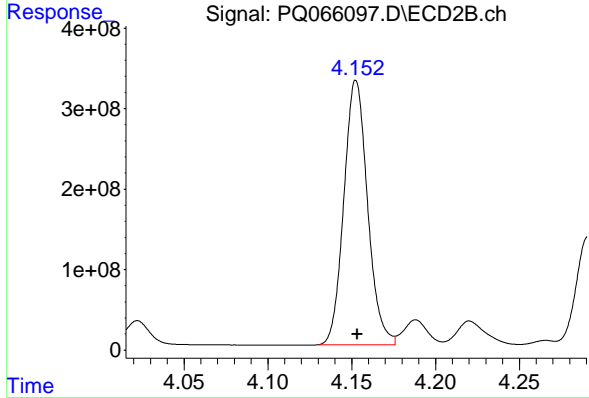
R.T.: 3.994 min
 Delta R.T.: 0.000 min
 Response: 1610477470
 Conc: 20185.35 ng/ml



#15 AR-1232-5

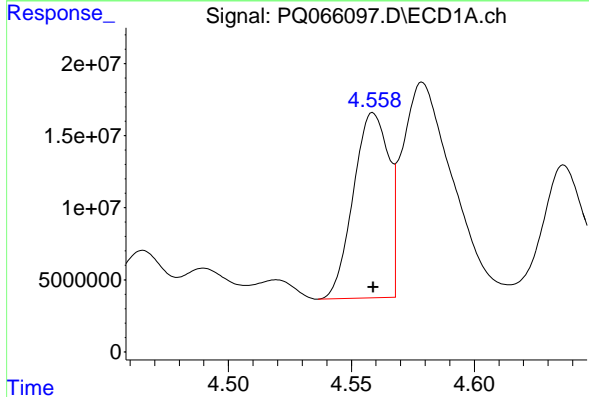
R.T.: 4.826 min
 Delta R.T.: 0.006 min
 Response: 3026728204
 Conc: 94491.98 ng/ml

Instrument :
 ECD_Q
 ClientSampleId :
 M-R-PIPE



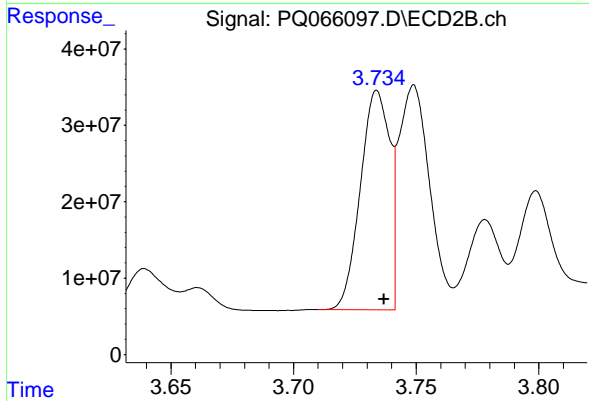
#15 AR-1232-5

R.T.: 4.153 min
 Delta R.T.: 0.000 min
 Response: 3236090624
 Conc: 35874.09 ng/ml



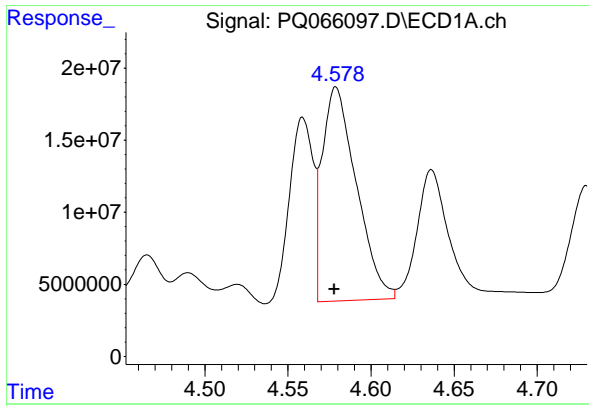
#16 AR-1242-1

R.T.: 4.559 min
 Delta R.T.: 0.000 min
 Response: 128028185
 Conc: 1194.53 ng/ml



#16 AR-1242-1

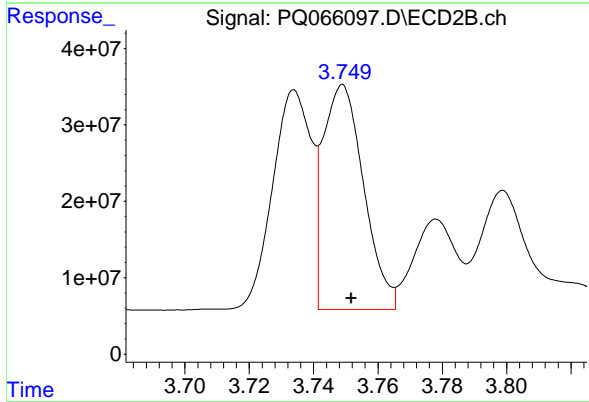
R.T.: 3.734 min
 Delta R.T.: -0.003 min
 Response: 238361113
 Conc: 1203.71 ng/ml



#17 AR-1242-2

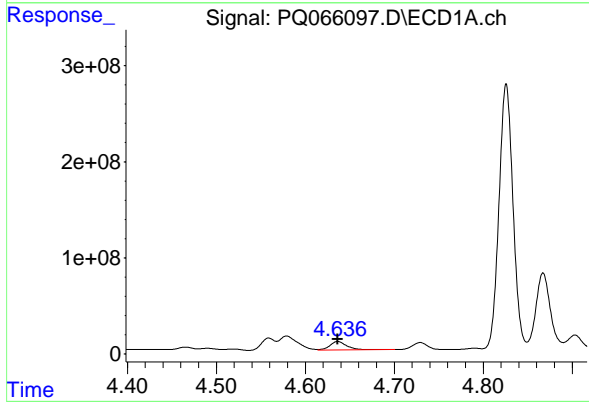
R.T.: 4.579 min
 Delta R.T.: 0.001 min
 Response: 211634942
 Conc: 1362.32 ng/ml

Instrument :
 ECD_Q
 ClientSampleId :
 M-R-PIPE



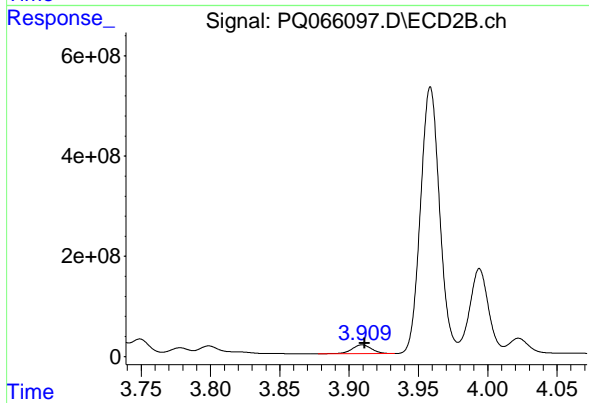
#17 AR-1242-2

R.T.: 3.749 min
 Delta R.T.: -0.003 min
 Response: 258696328
 Conc: 924.79 ng/ml



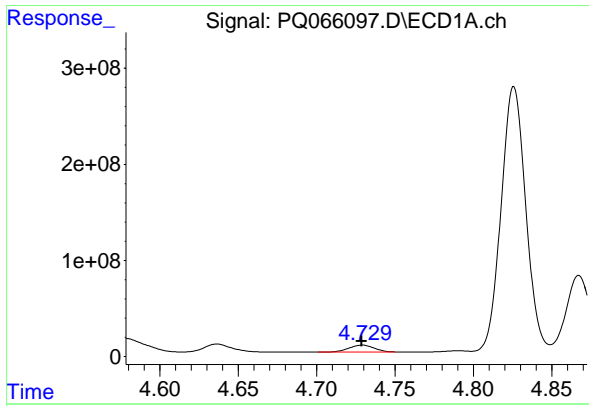
#18 AR-1242-3

R.T.: 4.636 min
 Delta R.T.: 0.000 min
 Response: 116367816
 Conc: 1173.26 ng/ml



#18 AR-1242-3

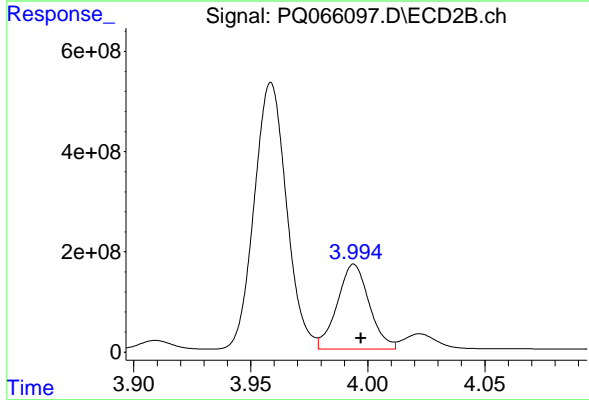
R.T.: 3.910 min
 Delta R.T.: -0.002 min
 Response: 172725477
 Conc: 1110.74 ng/ml



#19 AR-1242-4

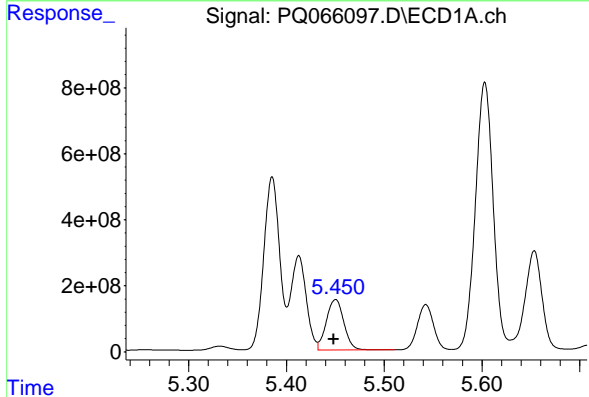
R.T.: 4.729 min
 Delta R.T.: 0.000 min
 Response: 80430571
 Conc: 983.64 ng/ml

Instrument : ECD_Q
 ClientSampleId : M-R-PIPE



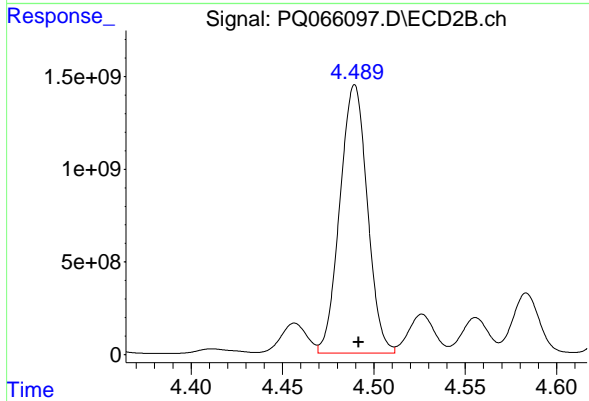
#19 AR-1242-4

R.T.: 3.994 min
 Delta R.T.: -0.003 min
 Response: 1610477470
 Conc: 10785.67 ng/ml



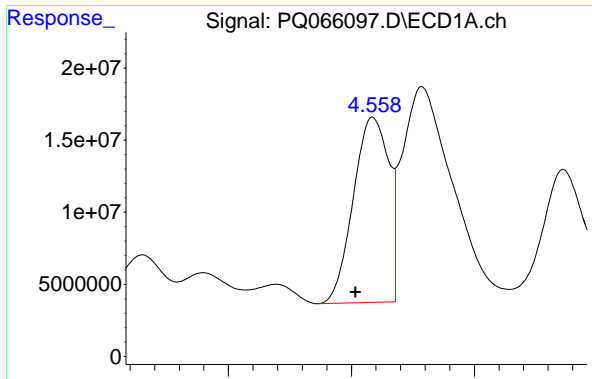
#20 AR-1242-5

R.T.: 5.450 min
 Delta R.T.: 0.002 min
 Response: 1901459094
 Conc: 23347.28 ng/ml



#20 AR-1242-5

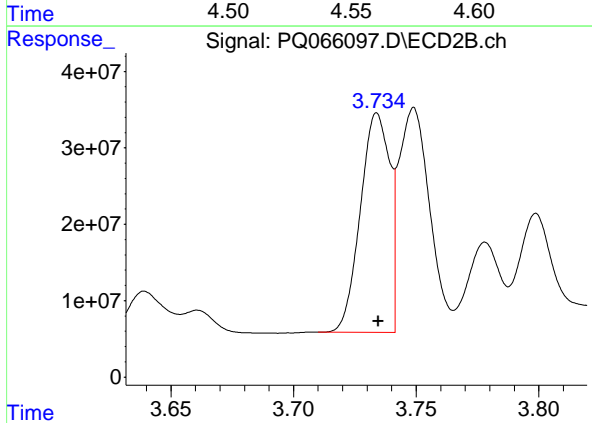
R.T.: 4.490 min
 Delta R.T.: -0.002 min
 Response: 15159487192
 Conc: 74612.07 ng/ml



#21 AR-1248-1

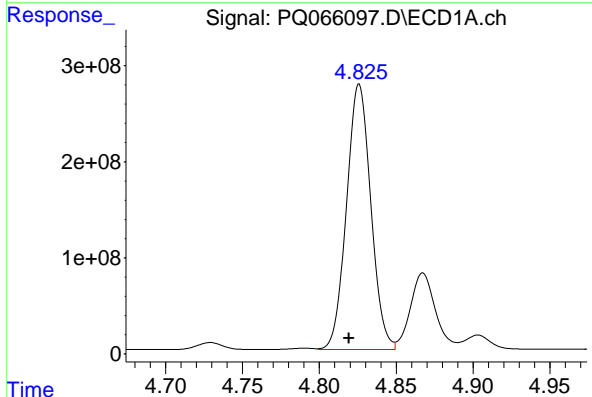
R.T.: 4.559 min
 Delta R.T.: 0.007 min
 Response: 128028185
 Conc: 1585.21 ng/ml

Instrument :
 ECD_Q
 ClientSampleId :
 M-R-PIPE



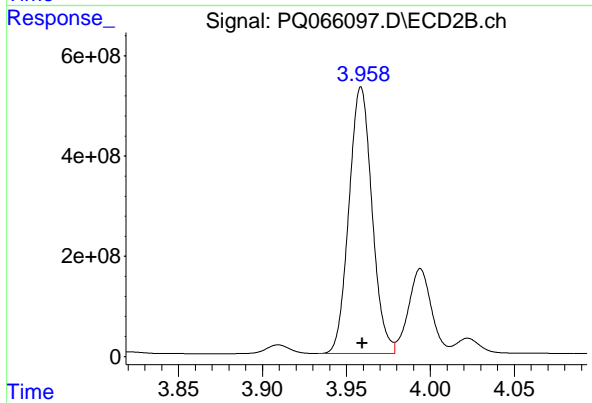
#21 AR-1248-1

R.T.: 3.734 min
 Delta R.T.: 0.000 min
 Response: 238361113
 Conc: 1547.12 ng/ml



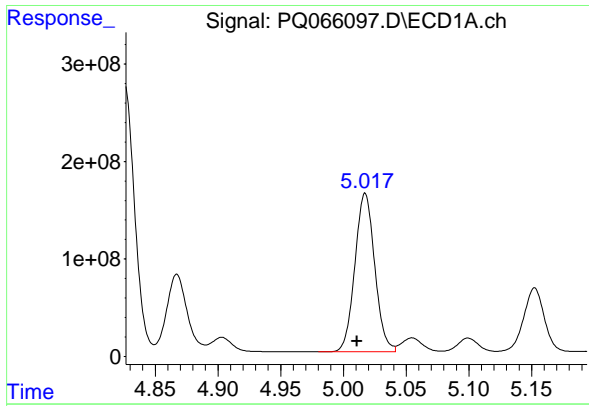
#22 AR-1248-2

R.T.: 4.826 min
 Delta R.T.: 0.006 min
 Response: 3026728204
 Conc: 27023.89 ng/ml



#22 AR-1248-2

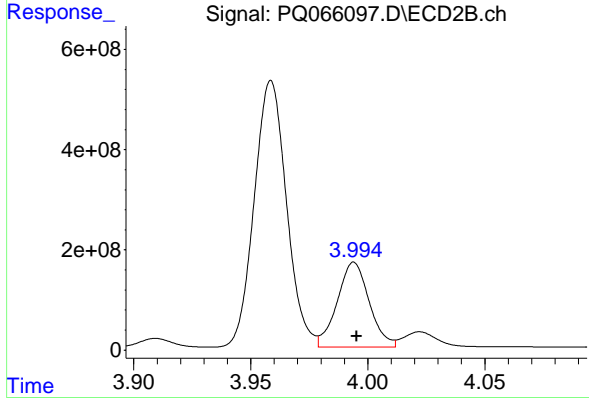
R.T.: 3.959 min
 Delta R.T.: 0.000 min
 Response: 5099264959
 Conc: 22144.47 ng/ml



#23 AR-1248-3

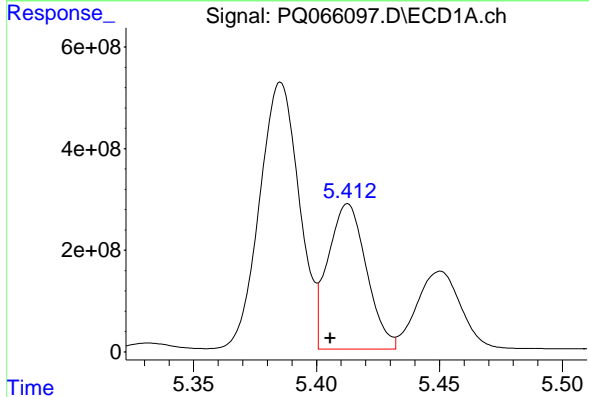
R.T.: 5.017 min
 Delta R.T.: 0.006 min
 Response: 1791633338
 Conc: 13315.31 ng/ml

Instrument :
 ECD_Q
 ClientSampleId :
 M-R-PIPE



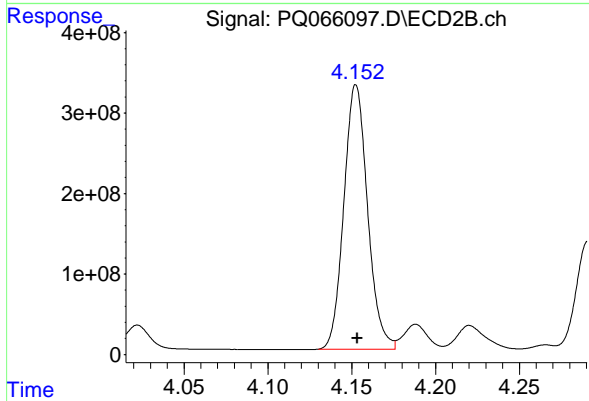
#23 AR-1248-3

R.T.: 3.994 min
 Delta R.T.: -0.001 min
 Response: 1610477470
 Conc: 7288.46 ng/ml



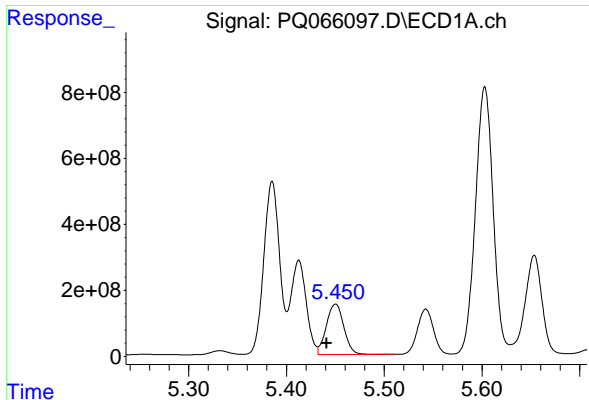
#24 AR-1248-4

R.T.: 5.413 min
 Delta R.T.: 0.007 min
 Response: 3109125687
 Conc: 21769.33 ng/ml



#24 AR-1248-4

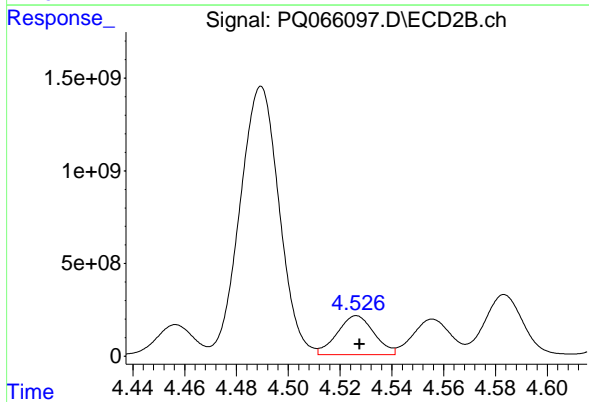
R.T.: 4.153 min
 Delta R.T.: 0.000 min
 Response: 3236090624
 Conc: 11929.95 ng/ml



#25 AR-1248-5

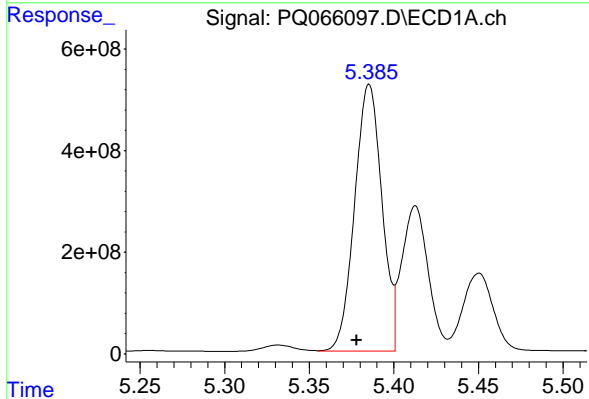
R.T.: 5.450 min
 Delta R.T.: 0.009 min
 Response: 1901459094
 Conc: 13273.36 ng/ml

Instrument :
 ECD_Q
 ClientSampleId :
 M-R-PIPE



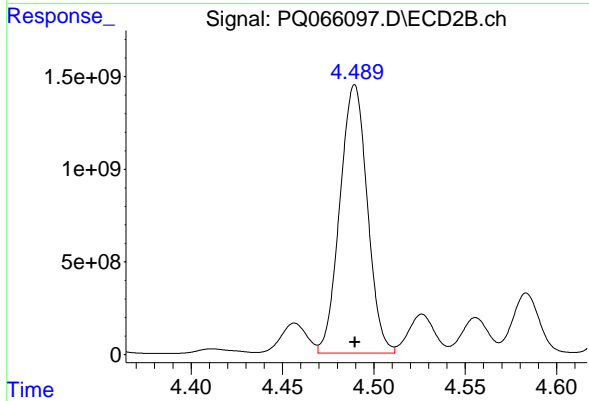
#25 AR-1248-5

R.T.: 4.526 min
 Delta R.T.: -0.001 min
 Response: 2068687457
 Conc: 7655.30 ng/ml



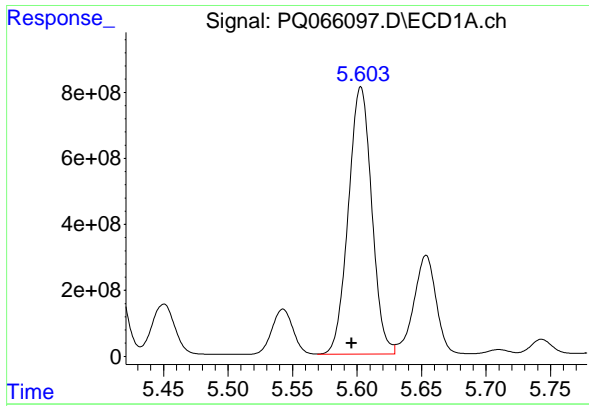
#26 AR-1254-1

R.T.: 5.385 min
 Delta R.T.: 0.007 min
 Response: 5895987032
 Conc: 38900.27 ng/ml



#26 AR-1254-1

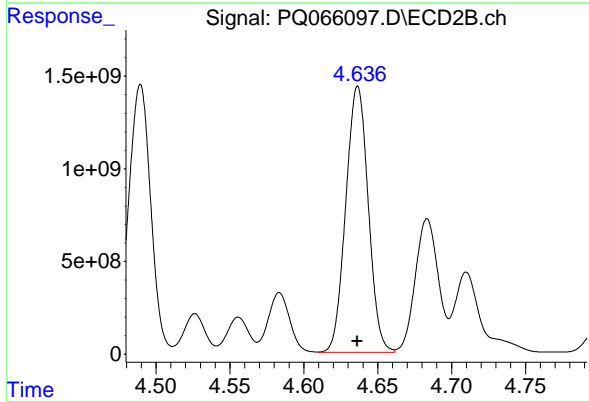
R.T.: 4.490 min
 Delta R.T.: 0.000 min
 Response: 15159487192
 Conc: 37716.43 ng/ml



#27 AR-1254-2

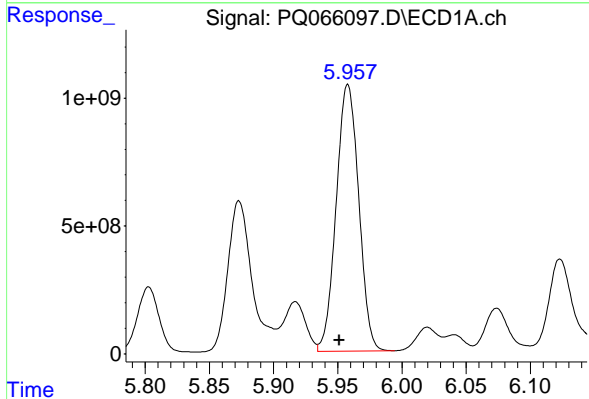
R.T.: 5.603 min
 Delta R.T.: 0.007 min
 Response: 10207558418
 Conc: 44348.10 ng/ml

Instrument : ECD_Q
 ClientSampleId : M-R-PIPE



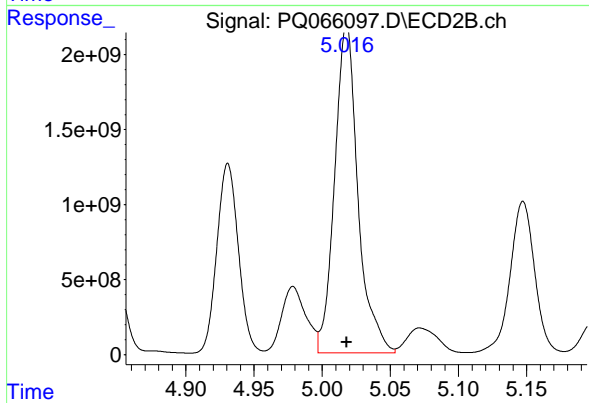
#27 AR-1254-2

R.T.: 4.637 min
 Delta R.T.: 0.000 min
 Response: 15199585681
 Conc: 41348.00 ng/ml



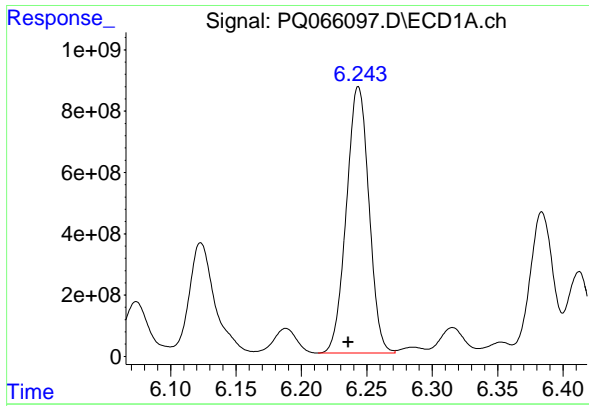
#28 AR-1254-3

R.T.: 5.958 min
 Delta R.T.: 0.007 min
 Response: 12757323533
 Conc: 53903.09 ng/ml



#28 AR-1254-3

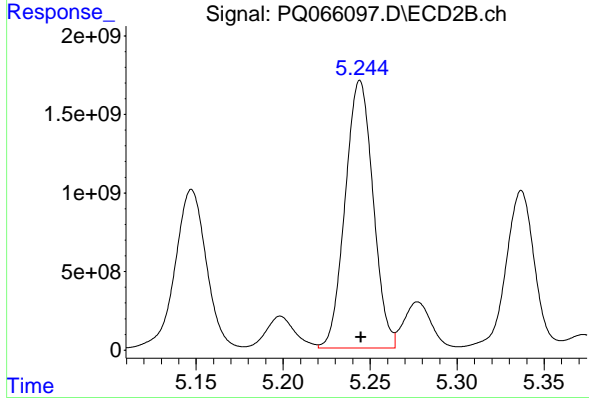
R.T.: 5.018 min
 Delta R.T.: 0.000 min
 Response: 25978546277
 Conc: 44803.60 ng/ml



#29 AR-1254-4

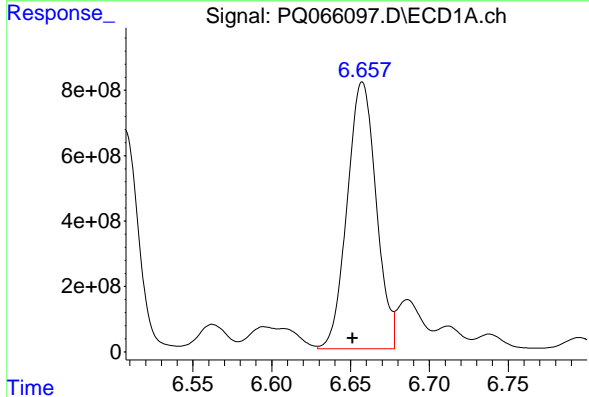
R.T.: 6.244 min
 Delta R.T.: 0.008 min
 Response: 10440544537
 Conc: 59727.09 ng/ml

Instrument : ECD_Q
 ClientSampleId : M-R-PIPE



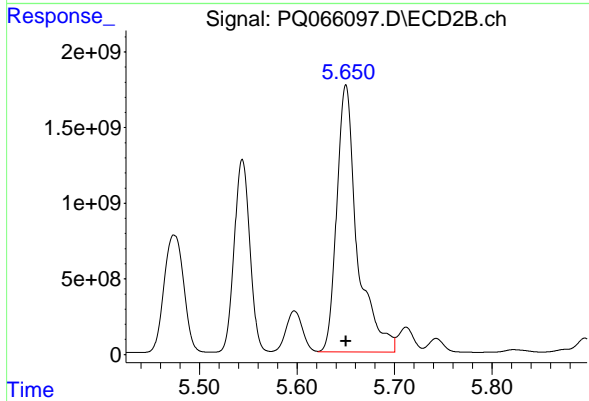
#29 AR-1254-4

R.T.: 5.244 min
 Delta R.T.: 0.000 min
 Response: 19027228543
 Conc: 48868.60 ng/ml



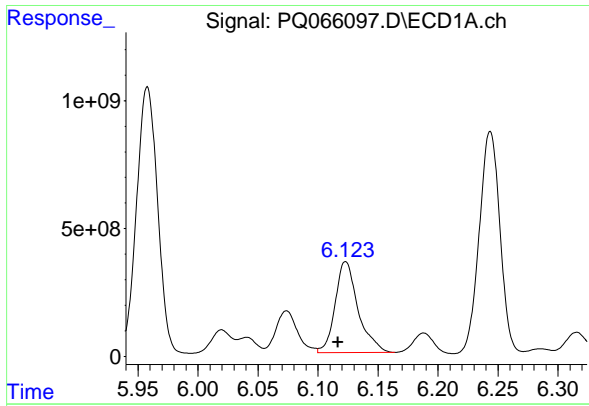
#30 AR-1254-5

R.T.: 6.657 min
 Delta R.T.: 0.006 min
 Response: 10444614544
 Conc: 54134.51 ng/ml



#30 AR-1254-5

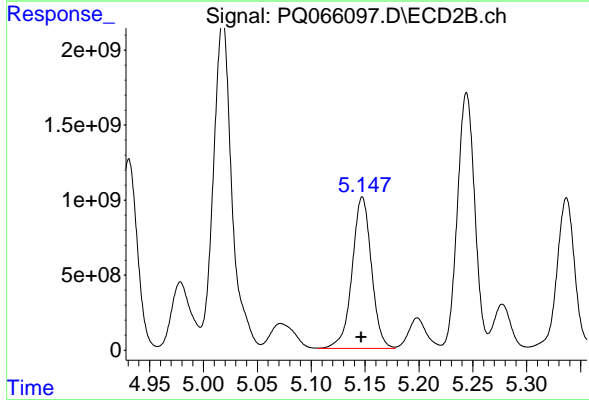
R.T.: 5.650 min
 Delta R.T.: 0.000 min
 Response: 25828652059
 Conc: 45251.48 ng/ml



#31 AR-1260-1

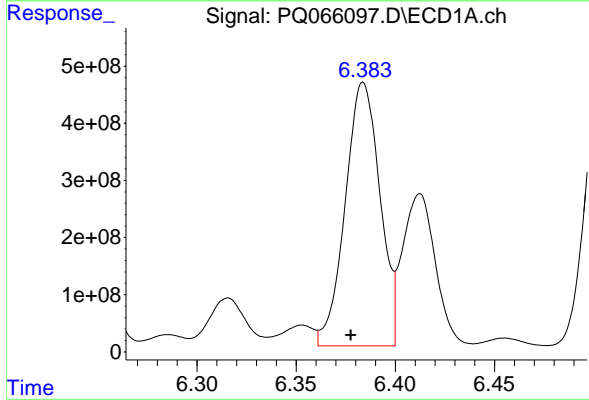
R.T.: 6.123 min
 Delta R.T.: 0.006 min
 Response: 4745639904
 Conc: 23135.73 ng/ml

Instrument :
 ECD_Q
 ClientSampleId :
 M-R-PIPE



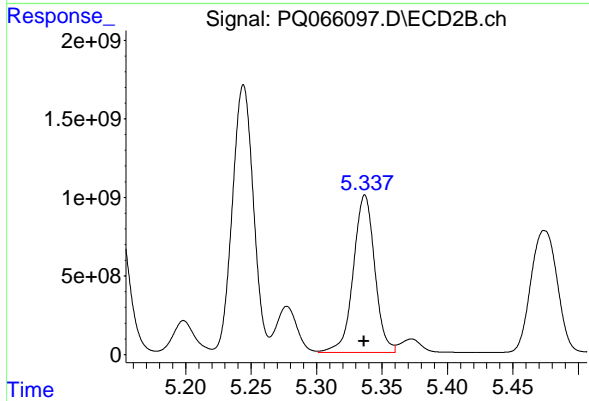
#31 AR-1260-1

R.T.: 5.147 min
 Delta R.T.: 0.000 min
 Response: 12591258206
 Conc: 26393.91 ng/ml



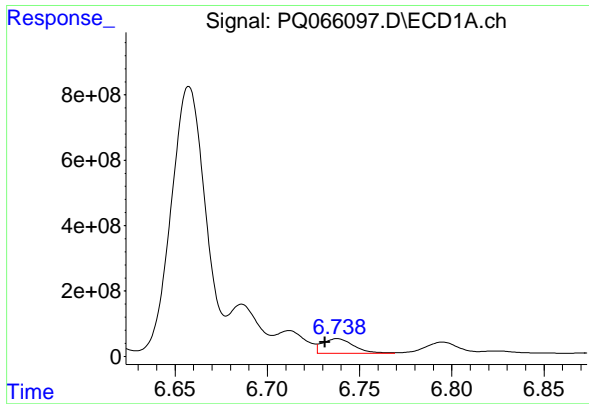
#32 AR-1260-2

R.T.: 6.384 min
 Delta R.T.: 0.006 min
 Response: 5618773659
 Conc: 22596.13 ng/ml



#32 AR-1260-2

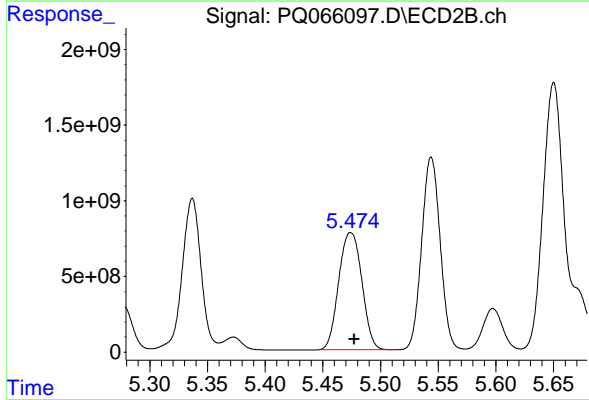
R.T.: 5.337 min
 Delta R.T.: 0.000 min
 Response: 11422467156
 Conc: 20744.37 ng/ml



#33 AR-1260-3

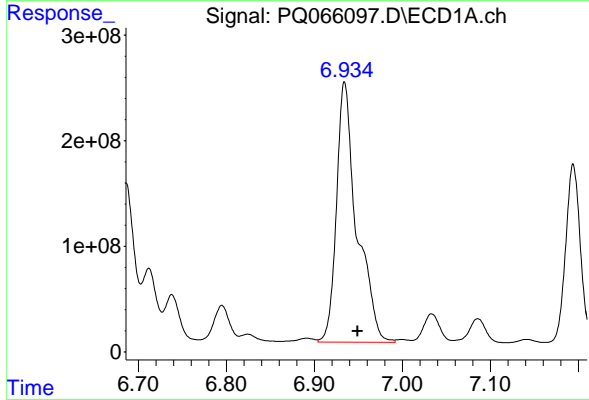
R.T.: 6.738 min
 Delta R.T.: 0.007 min
 Response: 523821478
 Conc: 3329.96 ng/ml

Instrument :
 ECD_Q
 ClientSampleId :
 M-R-PIPE



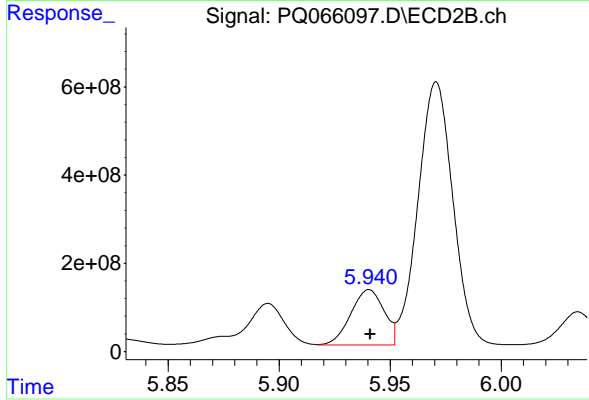
#33 AR-1260-3

R.T.: 5.474 min
 Delta R.T.: -0.003 min
 Response: 10804040884
 Conc: 20558.98 ng/ml



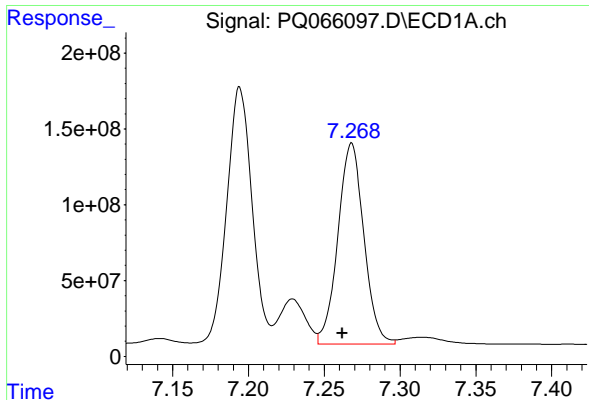
#34 AR-1260-4

R.T.: 6.934 min
 Delta R.T.: -0.015 min
 Response: 3965518964
 Conc: 21194.50 ng/ml



#34 AR-1260-4

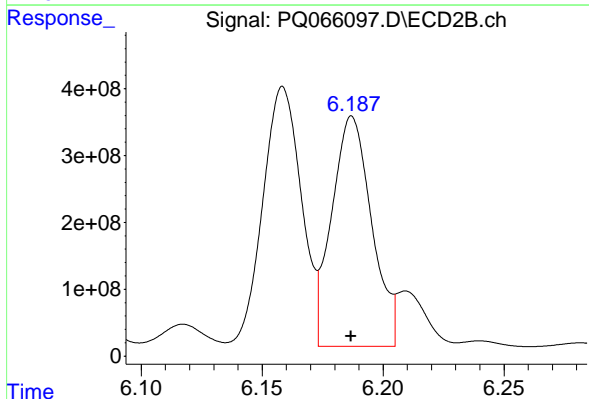
R.T.: 5.941 min
 Delta R.T.: 0.000 min
 Response: 1305081592
 Conc: 4102.43 ng/ml



#35 AR-1260-5

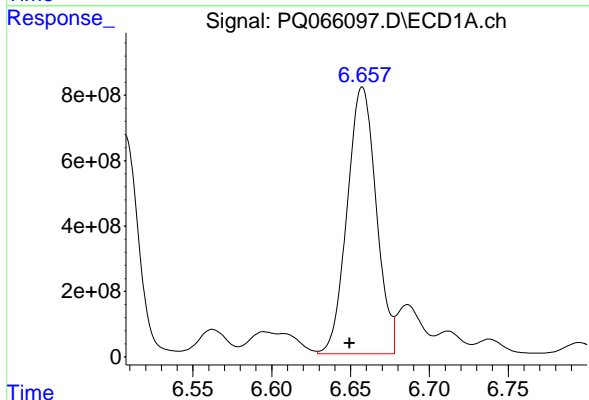
R.T.: 7.268 min
 Delta R.T.: 0.006 min
 Response: 1578475819
 Conc: 4653.40 ng/ml

Instrument :
 ECD_Q
 ClientSampleId :
 M-R-PIPE



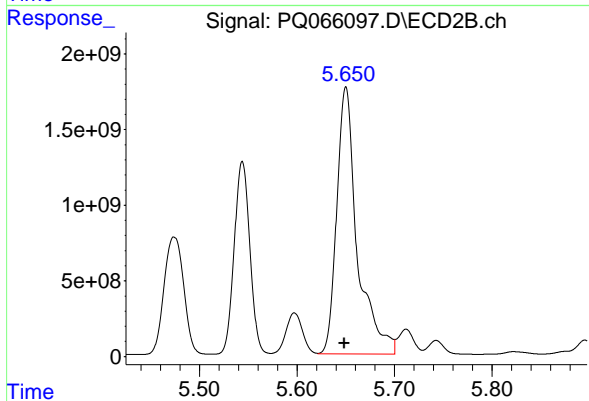
#35 AR-1260-5

R.T.: 6.187 min
 Delta R.T.: 0.000 min
 Response: 3967717960
 Conc: 4448.29 ng/ml



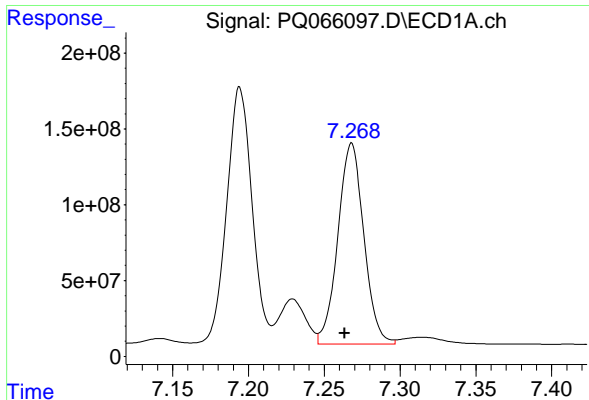
#36 AR-1262-1

R.T.: 6.657 min
 Delta R.T.: 0.008 min
 Response: 10444614544
 Conc: 73624.03 ng/ml



#36 AR-1262-1

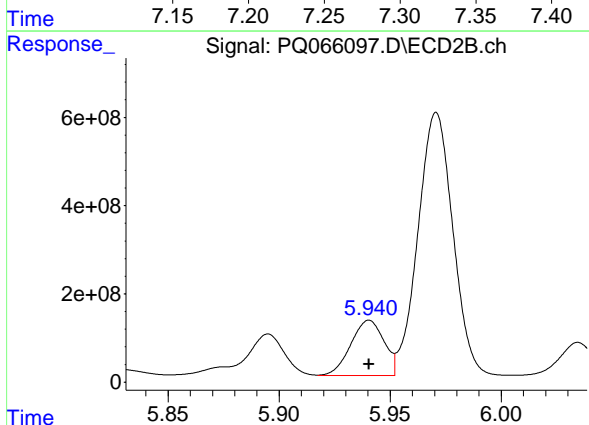
R.T.: 5.650 min
 Delta R.T.: 0.002 min
 Response: 25828652059
 Conc: 94168.29 ng/ml



#37 AR-1262-2

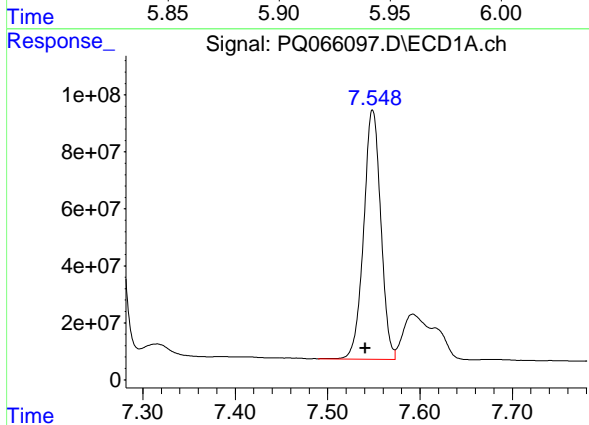
R.T.: 7.268 min
 Delta R.T.: 0.005 min
 Response: 1578475819
 Conc: 4515.52 ng/ml

Instrument :
 ECD_Q
 ClientSampleId :
 M-R-PIPE



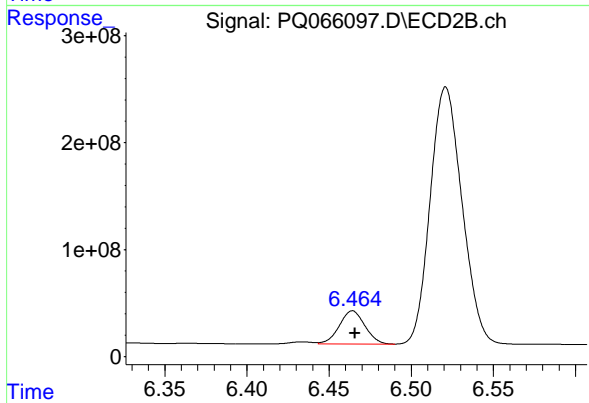
#37 AR-1262-2

R.T.: 5.941 min
 Delta R.T.: 0.000 min
 Response: 1305081592
 Conc: 2548.95 ng/ml



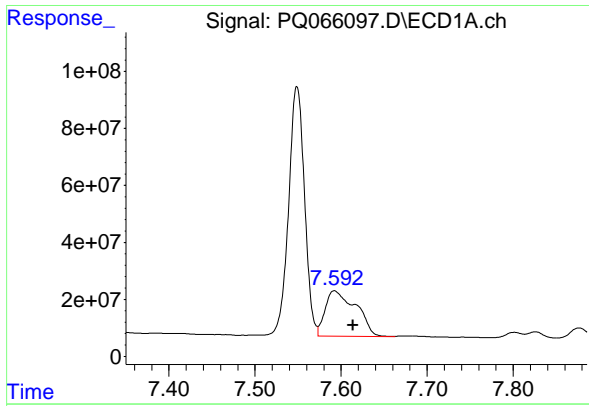
#38 AR-1262-3

R.T.: 7.549 min
 Delta R.T.: 0.008 min
 Response: 1125907167
 Conc: 4383.17 ng/ml



#38 AR-1262-3

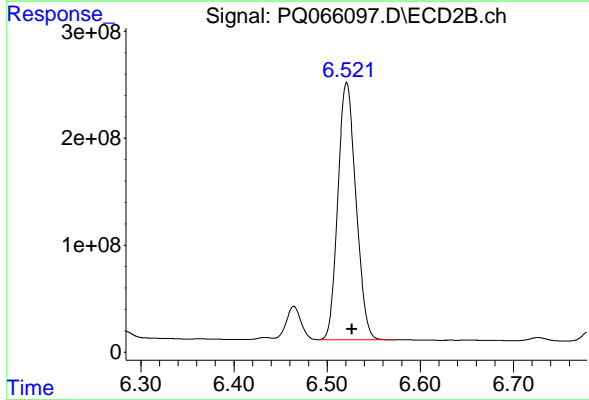
R.T.: 6.464 min
 Delta R.T.: -0.001 min
 Response: 338579462
 Conc: 781.72 ng/ml



#39 AR-1262-4

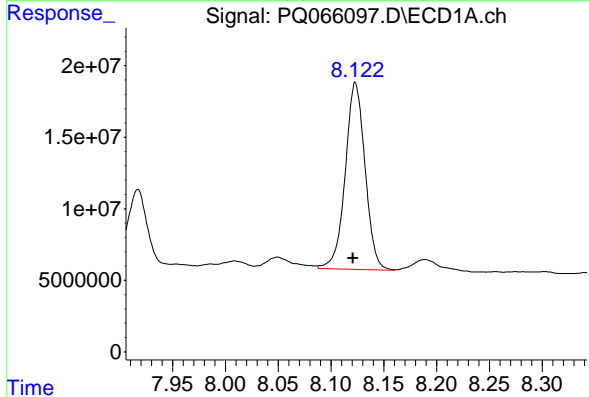
R.T.: 7.592 min
 Delta R.T.: -0.022 min
 Response: 397642289
 Conc: 2007.12 ng/ml

Instrument :
 ECD_Q
 ClientSampleId :
 M-R-PIPE



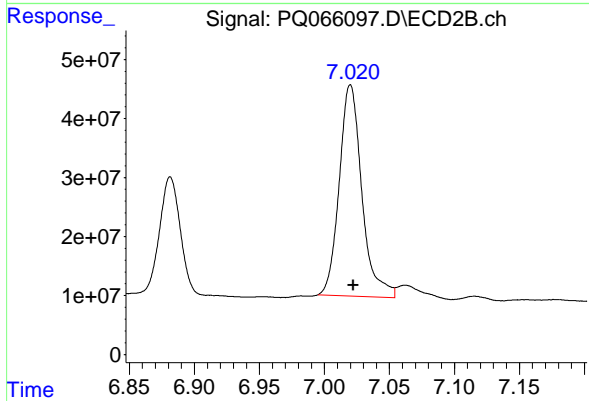
#39 AR-1262-4

R.T.: 6.521 min
 Delta R.T.: -0.006 min
 Response: 3238105311
 Conc: 4376.30 ng/ml



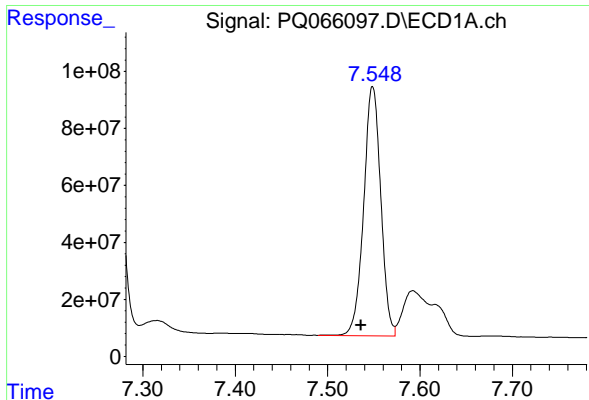
#40 AR-1262-5

R.T.: 8.123 min
 Delta R.T.: 0.002 min
 Response: 170522291
 Conc: 1374.16 ng/ml



#40 AR-1262-5

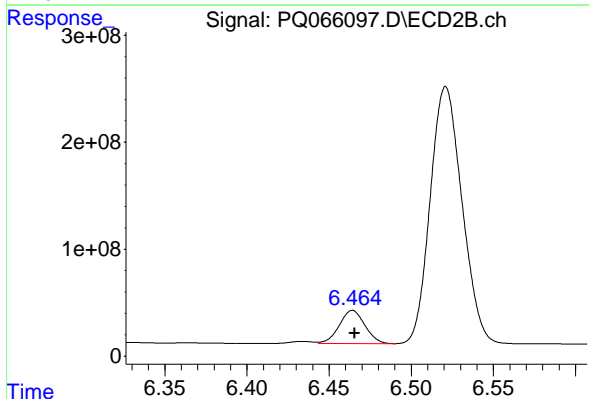
R.T.: 7.020 min
 Delta R.T.: -0.002 min
 Response: 433573172
 Conc: 1254.70 ng/ml



#41 AR-1268-1

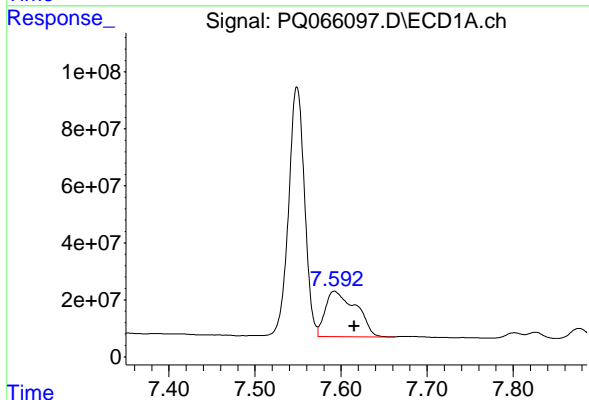
R.T.: 7.549 min
Delta R.T.: 0.013 min
Response: 1125907167
Conc: 2461.69 ng/ml

Instrument :
ECD_Q
ClientSampleId :
M-R-PIPE



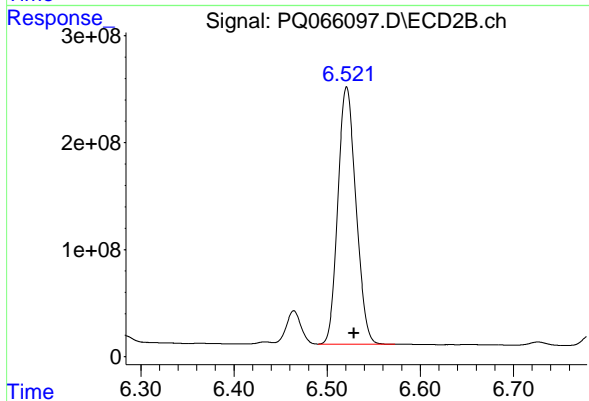
#41 AR-1268-1

R.T.: 6.464 min
Delta R.T.: -0.001 min
Response: 338579462
Conc: 272.76 ng/ml



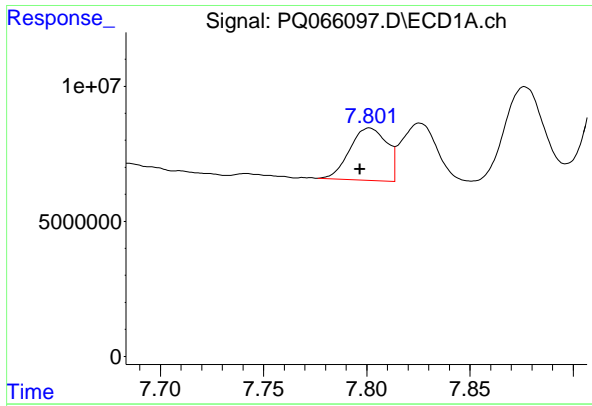
#42 AR-1268-2

R.T.: 7.592 min
Delta R.T.: -0.023 min
Response: 397642289
Conc: 948.70 ng/ml



#42 AR-1268-2

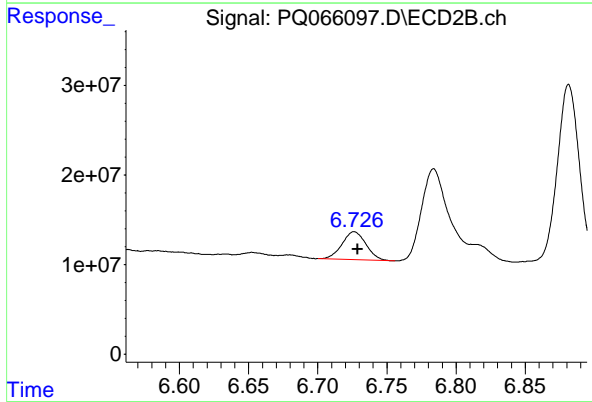
R.T.: 6.521 min
Delta R.T.: -0.008 min
Response: 3238105311
Conc: 2835.67 ng/ml



#43 AR-1268-3

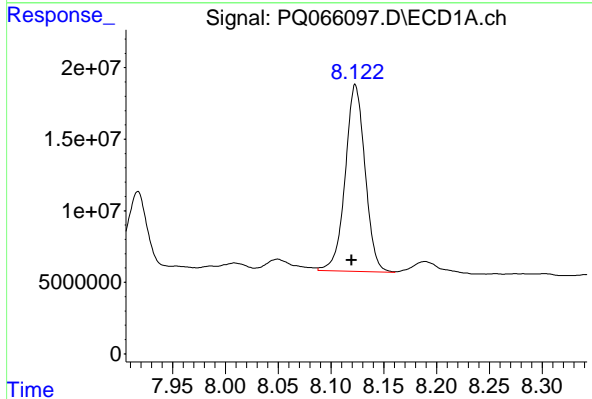
R.T.: 7.801 min
 Delta R.T.: 0.005 min
 Response: 24285227
 Conc: 70.71 ng/ml

Instrument :
 ECD_Q
 ClientSampleId :
 M-R-PIPE



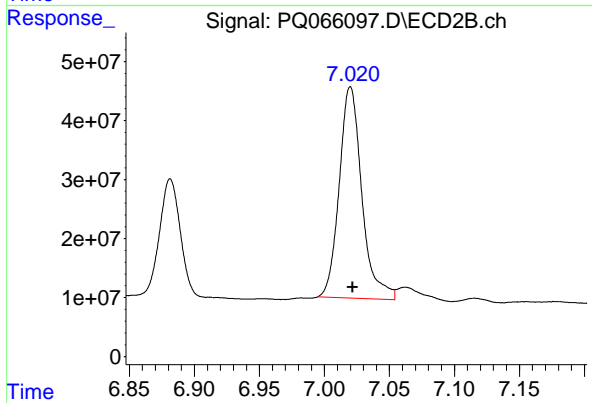
#43 AR-1268-3

R.T.: 6.726 min
 Delta R.T.: -0.002 min
 Response: 37916229
 Conc: 38.87 ng/ml



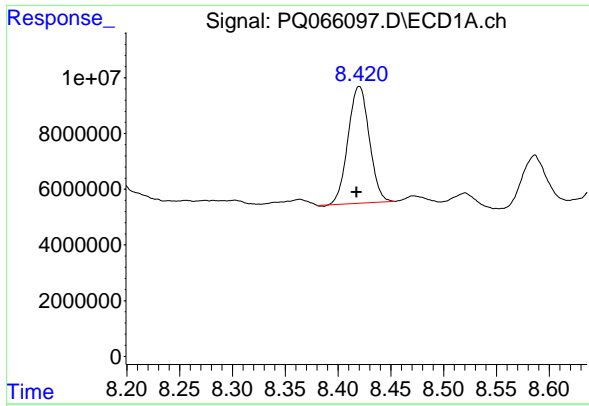
#44 AR-1268-4

R.T.: 8.123 min
 Delta R.T.: 0.004 min
 Response: 170522291
 Conc: 1139.66 ng/ml



#44 AR-1268-4

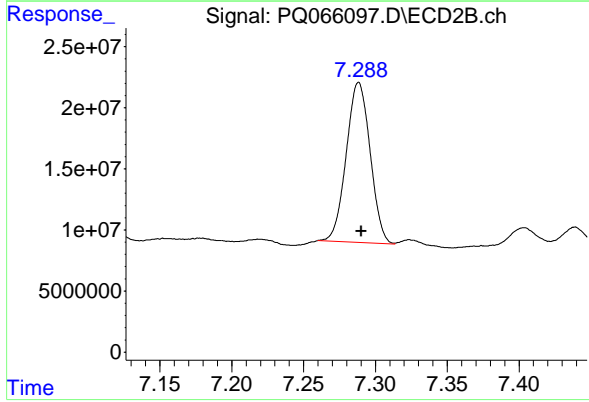
R.T.: 7.020 min
 Delta R.T.: -0.002 min
 Response: 433573172
 Conc: 1024.16 ng/ml



#45 AR-1268-5

R.T.: 8.420 min
 Delta R.T.: 0.003 min
 Response: 58794320
 Conc: 59.51 ng/ml

Instrument :
 ECD_Q
 ClientSampleId :
 M-R-PIPE



#45 AR-1268-5

R.T.: 7.288 min
 Delta R.T.: -0.002 min
 Response: 151033042
 Conc: 52.93 ng/ml