

Data Path : Z:\pestpcbsrv\HPCHEM1\ECD\_Q\Data\PQ041524\  
 Data File : PQ066099.D  
 Signal(s) : Signal #1: ECD1A.ch Signal #2: ECD2B.ch  
 Acq On : 15 Apr 2024 20:08  
 Operator : YP\AJ  
 Sample : AR1242CCC500  
 Misc :  
 ALS Vial : 4 Sample Multiplier: 1

Instrument :  
 ECD\_Q  
 ClientSampleId :  
 AR1242CCC500

Integration File signal 1: autoint1.e  
 Integration File signal 2: autoint2.e  
 Quant Time: Apr 16 01:44:48 2024  
 Quant Method : Z:\pestpcbsrv\HPCHEM1\ECD\_Q\Method\PQ031824.M  
 Quant Title : GC EXTRACTABLES  
 QLast Update : Tue Mar 19 12:55:45 2024  
 Response via : Initial Calibration  
 Integrator: ChemStation

Volume Inj. : 2 µl  
 Signal #1 Phase : ZB-MR1 Signal #2 Phase: ZB-MR2  
 Signal #1 Info : 30Mx0.32mmx 0.50µ Signal #2 Info : 30M x 0.32mm x 0.25µm

Compound	RT#1	RT#2	Resp#1	Resp#2	ng/ml	ng/ml
-----						
System Monitoring Compounds						
1) SA Tetrachlo...	3.442	2.735	212.4E6	328.5E6	42.732	44.295
2) SA Decachlor...	8.651	7.502	113.1E6	284.3E6	38.968	34.024
Target Compounds						
3) L1 AR-1016-1	4.552	3.733	51754085	88825168	330.443	315.966
4) L1 AR-1016-2	4.572	3.748	76951683	127.0E6	335.720	312.143
5) L1 AR-1016-3	4.630	3.908	48029706	69261666	334.285	310.497
6) L1 AR-1016-4	4.722	3.957	38520305	60824920	334.741	318.659
7) L1 AR-1016-5	5.011	4.152	39948685	74982663	358.378	330.270
8) L2 AR-1221-1	3.640	2.935	4414601	8700262	86.138	103.679
9) L2 AR-1221-2	3.723	3.011	8754927	13691877	225.793	210.697
10) L2 AR-1221-3	3.794	3.079	30434694	48552141	258.298	248.601
11) L3 AR-1232-1	3.794	3.079	30434694	48552141	310.656	296.248
12) L3 AR-1232-2	4.292	3.748	40540860	127.0E6	807.066	734.145
13) L3 AR-1232-3	4.572	3.908	76951683	69261666	811.141	741.944
14) L3 AR-1232-4	4.722	3.994	38520305	66275270	817.984	830.679
15) L3 AR-1232-5	4.820	4.152	31496289	74982663	983.288	831.230
16) L4 AR-1242-1	4.552	3.733	51754085	88825168	482.878	448.564
17) L4 AR-1242-2	4.572	3.748	76951683	127.0E6	495.347	453.831
18) L4 AR-1242-3	4.630	3.908	48029706	69261666	484.250	445.397
19) L4 AR-1242-4	4.722	3.994	38520305	66275270	471.093	443.858
20) L4 AR-1242-5	5.441	4.489	38698594	90358470	475.165	444.727
21) L5 AR-1248-1	4.552	3.733	51754085	88825168	640.806	576.535
22) L5 AR-1248-2	4.820	3.957	31496289	60824920	281.212	264.143
23) L5 AR-1248-3	5.011	3.994	39948685	66275270	296.896	299.939
24) L5 AR-1248-4	5.406	4.152	37264950	74982663	260.920	276.426
25) L5 AR-1248-5	5.441	4.525	38698594	70247459	270.140	259.955
26) L6 AR-1254-1	5.378	4.489	32031623	90358470	211.337	224.810
27) L6 AR-1254-2	5.594	4.634	37385255	28789352	162.425	78.317 #
28) L6 AR-1254-3	5.952	5.016	18036253	38150140	76.208	65.795
29) L6 AR-1254-4	6.237	5.243	12052356	26726069	68.948	68.642
30) L6 AR-1254-5	6.652	5.648	9987043	16881106	51.763	29.575 #
31) L7 AR-1260-1	6.118	5.147	3674784	17805761	17.915	37.325 #
32) L7 AR-1260-2	6.379	5.334	3683172	8958392	14.812	16.269
33) L7 AR-1260-3	6.707	5.471	5427789	8244588	34.505	15.689 #
34) L7 AR-1260-4	6.928	5.940	8158811	884270	43.606	2.780 #
35) L7 AR-1260-5	7.259	6.183	1369038	1630899	4.036	1.828 #
36) L8 AR-1262-1	6.652	5.648	9987043	16881106	70.399	61.547
37) L8 AR-1262-2	7.259	5.940	1369038	884270	3.916	1.727 #
38) L8 AR-1262-3	7.543	6.469	1029272	204367	4.007	0.472 #
39) L8 AR-1262-4	0.000	6.518	0	1740605	N.D.	2.352 #
40) L8 AR-1262-5	8.120	7.022	204426	437234	1.647	1.265
41) L9 AR-1268-1	7.543	6.469	1029272	204367	2.250	0.165 #

Data Path : Z:\pestpcbsrv\HPCHEM1\ECD\_Q\Data\PQ041524\  
 Data File : PQ066099.D  
 Signal(s) : Signal #1: ECD1A.ch Signal #2: ECD2B.ch  
 Acq On : 15 Apr 2024 20:08  
 Operator : YP\AJ  
 Sample : AR1242CCC500  
 Misc :  
 ALS Vial : 4 Sample Multiplier: 1

Instrument :  
 ECD\_Q  
 ClientSampleId :  
 AR1242CCC500

Integration File signal 1: autoint1.e  
 Integration File signal 2: autoint2.e  
 Quant Time: Apr 16 01:44:48 2024  
 Quant Method : Z:\pestpcbsrv\HPCHEM1\ECD\_Q\Method\PQ031824.M  
 Quant Title : GC EXTRACTABLES  
 QLast Update : Tue Mar 19 12:55:45 2024  
 Response via : Initial Calibration  
 Integrator: ChemStation

Volume Inj. : 2 µl  
 Signal #1 Phase : ZB-MR1 Signal #2 Phase: ZB-MR2  
 Signal #1 Info : 30Mx0.32mmx 0.50µ Signal #2 Info : 30M x 0.32mm x 0.25µm

	Compound	RT#1	RT#2	Resp#1	Resp#2	ng/ml	ng/ml
42)	L9 AR-1268-2	0.000	6.518	0	1740605	N.D.	1.524 #
43)	L9 AR-1268-3	7.787	6.724	4802588	990199	13.982	1.015 #
44)	L9 AR-1268-4	8.120	7.022	204426	437234	1.366	1.033
45)	L9 AR-1268-5	8.412	7.285	275131	1907018	0.278	0.668 #

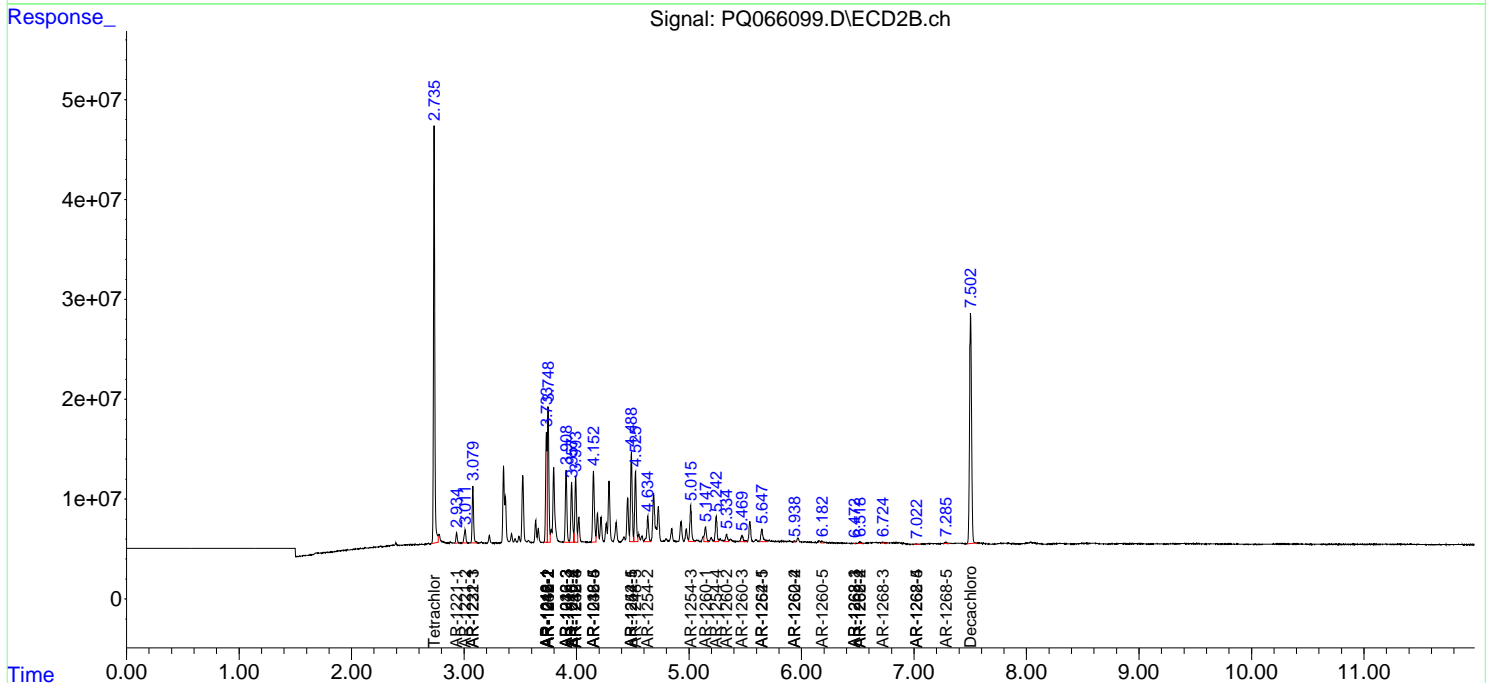
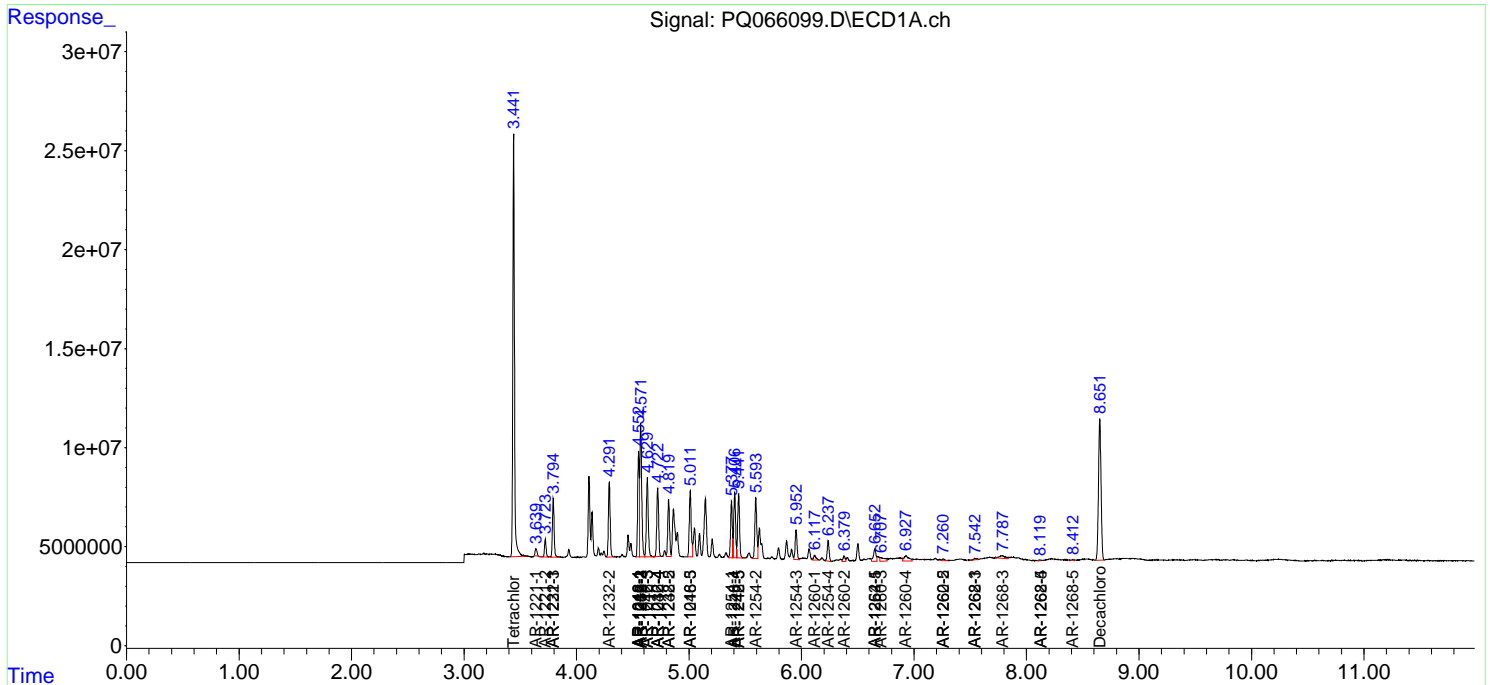
(f)=RT Delta > 1/2 Window (#)=Amounts differ by > 25% (m)=manual int.

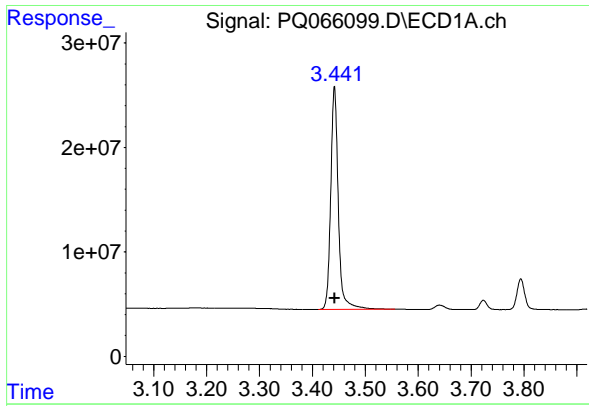
Data Path : Z:\pestpcbsrv\HPCHEM1\ECD\_Q\Data\PQ041524\  
 Data File : PQ066099.D  
 Signal(s) : Signal #1: ECD1A.ch Signal #2: ECD2B.ch  
 Acq On : 15 Apr 2024 20:08  
 Operator : YP\AJ  
 Sample : AR1242CCC500  
 Misc :  
 ALS Vial : 4 Sample Multiplier: 1

**Instrument :**  
 ECD\_Q  
**ClientSampleId :**  
 AR1242CCC500

Integration File signal 1: autoint1.e  
 Integration File signal 2: autoint2.e  
 Quant Time: Apr 16 01:44:48 2024  
 Quant Method : Z:\pestpcbsrv\HPCHEM1\ECD\_Q\Method\PQ031824.M  
 Quant Title : GC EXTRACTABLES  
 QLast Update : Tue Mar 19 12:55:45 2024  
 Response via : Initial Calibration  
 Integrator: ChemStation

Volume Inj. : 2 µl  
 Signal #1 Phase : ZB-MR1 Signal #2 Phase: ZB-MR2  
 Signal #1 Info : 30Mx0.32mmx 0.50µ Signal #2 Info : 30M x 0.32mm x 0.25µm

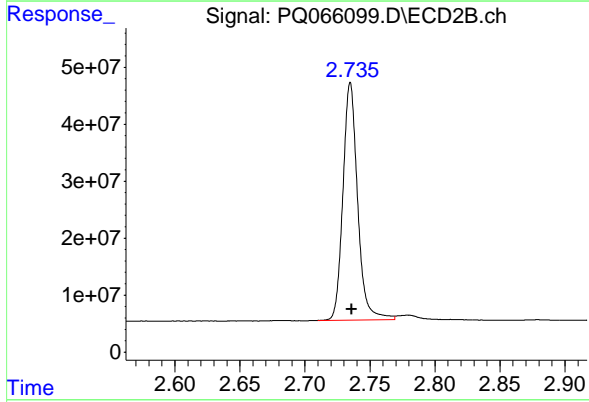




#1 Tetrachloro-m-xylene

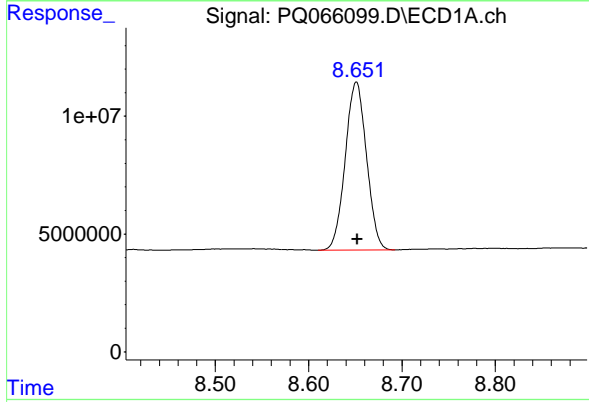
R.T.: 3.442 min  
 Delta R.T.: 0.000 min  
 Response: 212390853  
 Conc: 42.73 ng/ml

Instrument :  
 ECD\_Q  
 ClientSampleId :  
 AR1242CCC500



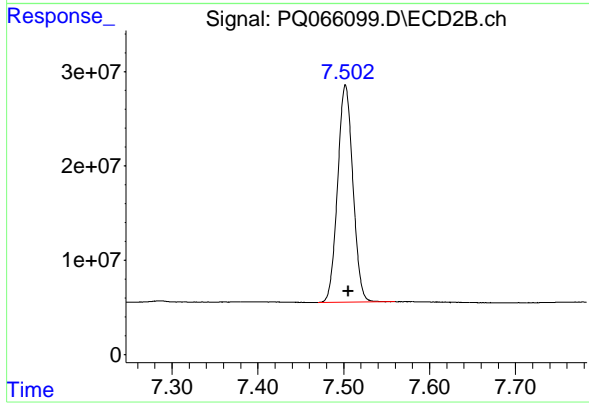
#1 Tetrachloro-m-xylene

R.T.: 2.735 min  
 Delta R.T.: 0.000 min  
 Response: 328468359  
 Conc: 44.30 ng/ml



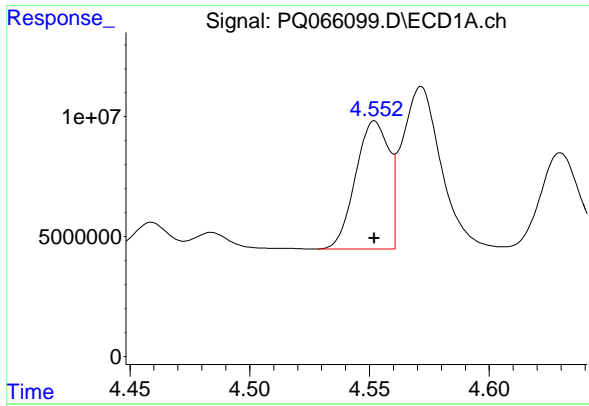
#2 Decachlorobiphenyl

R.T.: 8.651 min  
 Delta R.T.: -0.001 min  
 Response: 113080297  
 Conc: 38.97 ng/ml



#2 Decachlorobiphenyl

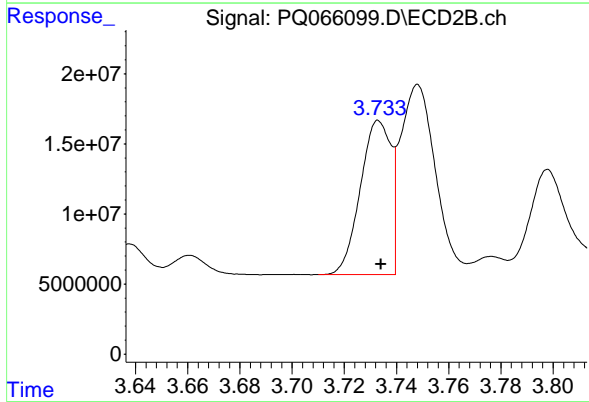
R.T.: 7.502 min  
 Delta R.T.: -0.004 min  
 Response: 284336815  
 Conc: 34.02 ng/ml



#3 AR-1016-1

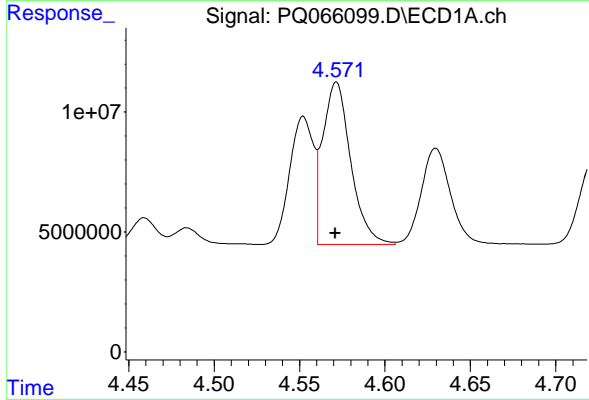
R.T.: 4.552 min  
 Delta R.T.: 0.000 min  
 Response: 51754085  
 Conc: 330.44 ng/ml

Instrument :  
 ECD\_Q  
 ClientSampleId :  
 AR1242CCC500



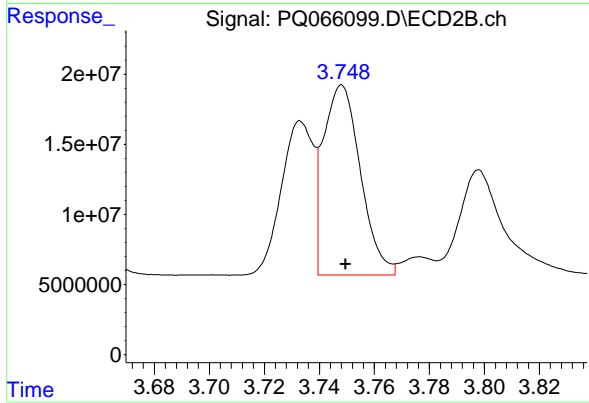
#3 AR-1016-1

R.T.: 3.733 min  
 Delta R.T.: 0.000 min  
 Response: 88825168  
 Conc: 315.97 ng/ml



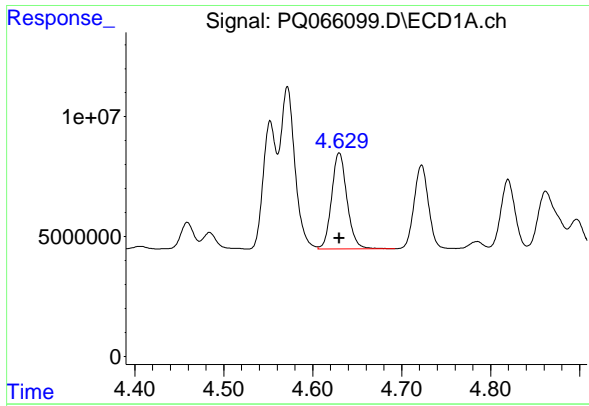
#4 AR-1016-2

R.T.: 4.572 min  
 Delta R.T.: 0.000 min  
 Response: 76951683  
 Conc: 335.72 ng/ml



#4 AR-1016-2

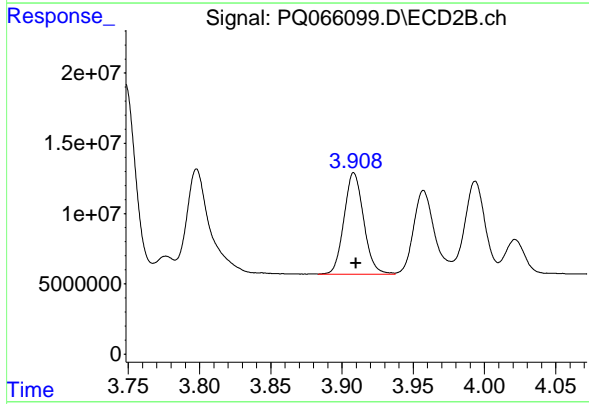
R.T.: 3.748 min  
 Delta R.T.: -0.001 min  
 Response: 126952792  
 Conc: 312.14 ng/ml



#5 AR-1016-3

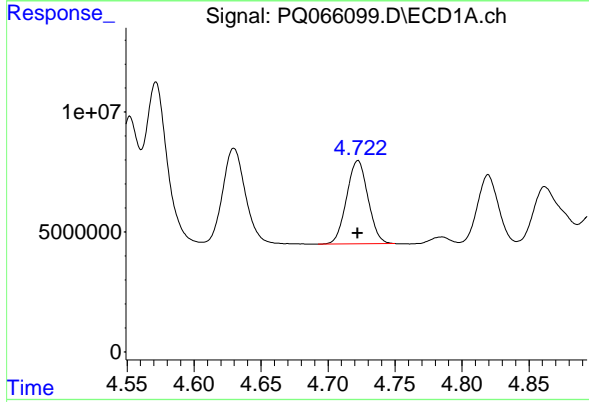
R.T.: 4.630 min  
 Delta R.T.: 0.000 min  
 Response: 48029706  
 Conc: 334.28 ng/ml

Instrument :  
 ECD\_Q  
 ClientSampleId :  
 AR1242CCC500



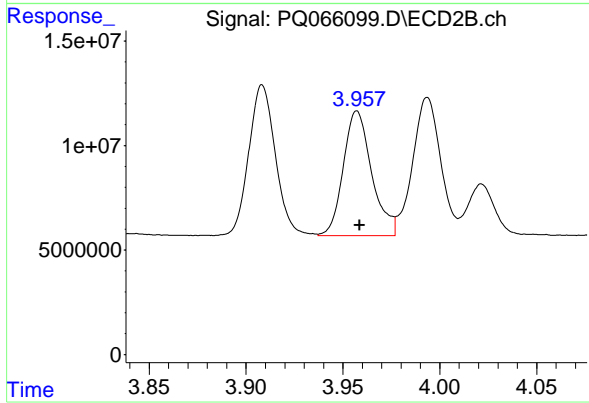
#5 AR-1016-3

R.T.: 3.908 min  
 Delta R.T.: -0.001 min  
 Response: 69261666  
 Conc: 310.50 ng/ml



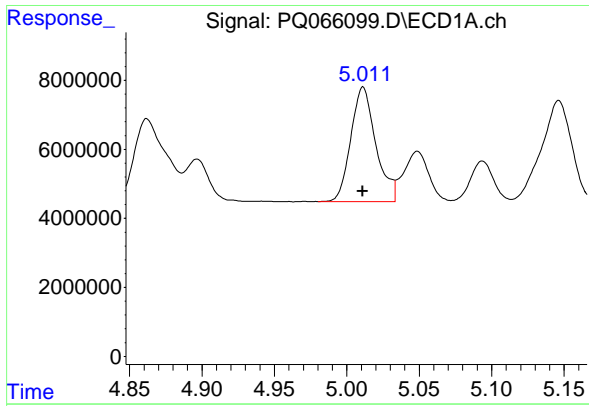
#6 AR-1016-4

R.T.: 4.722 min  
 Delta R.T.: 0.000 min  
 Response: 38520305  
 Conc: 334.74 ng/ml



#6 AR-1016-4

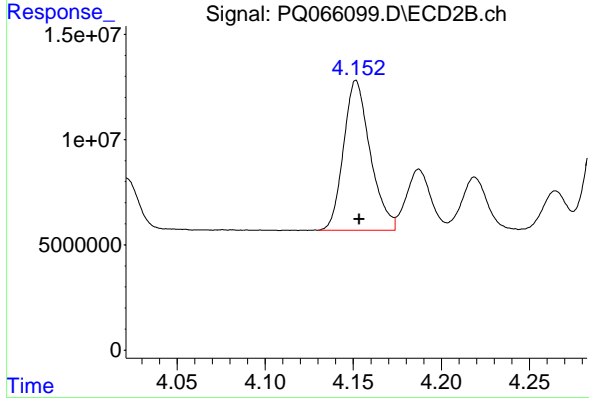
R.T.: 3.957 min  
 Delta R.T.: -0.001 min  
 Response: 60824920  
 Conc: 318.66 ng/ml



#7 AR-1016-5

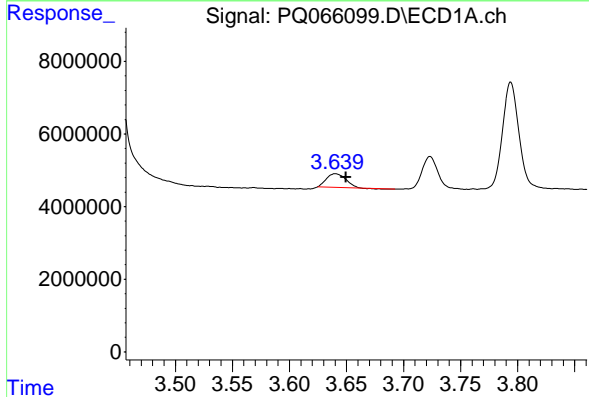
R.T.: 5.011 min  
 Delta R.T.: 0.000 min  
 Response: 39948685  
 Conc: 358.38 ng/ml

Instrument :  
 ECD\_Q  
 ClientSampleId :  
 AR1242CCC500



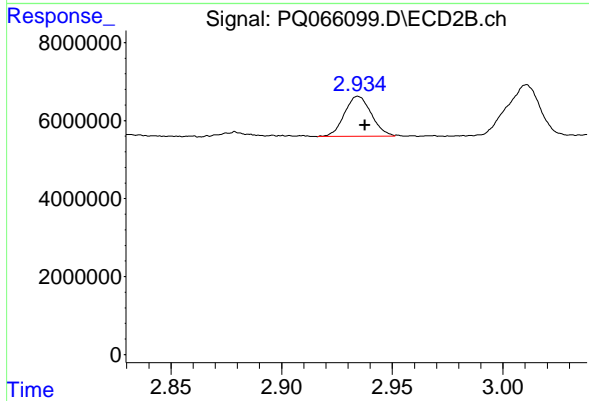
#7 AR-1016-5

R.T.: 4.152 min  
 Delta R.T.: -0.002 min  
 Response: 74982663  
 Conc: 330.27 ng/ml



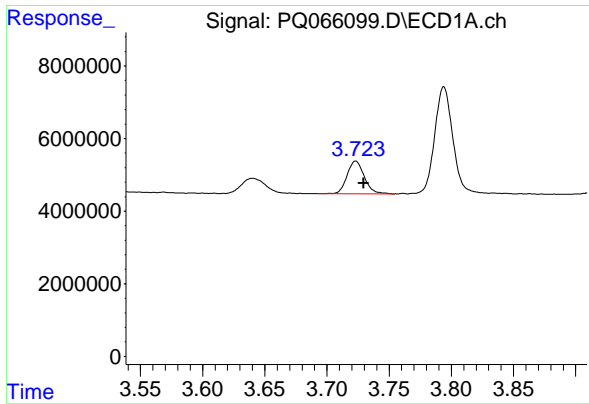
#8 AR-1221-1

R.T.: 3.640 min  
 Delta R.T.: -0.009 min  
 Response: 4414601  
 Conc: 86.14 ng/ml



#8 AR-1221-1

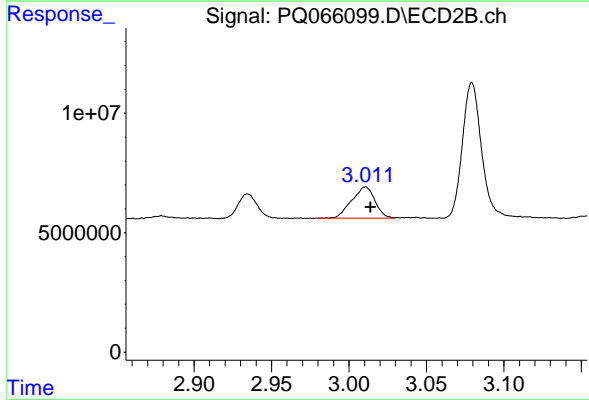
R.T.: 2.935 min  
 Delta R.T.: -0.003 min  
 Response: 8700262  
 Conc: 103.68 ng/ml



#9 AR-1221-2

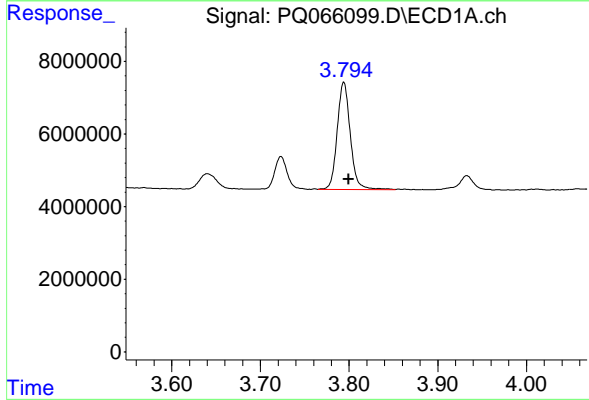
R.T.: 3.723 min  
 Delta R.T.: -0.006 min  
 Response: 8754927  
 Conc: 225.79 ng/ml

Instrument :  
 ECD\_Q  
 ClientSampleId :  
 AR1242CCC500



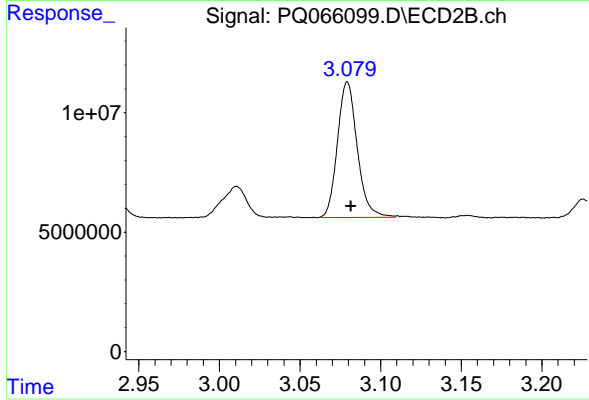
#9 AR-1221-2

R.T.: 3.011 min  
 Delta R.T.: -0.003 min  
 Response: 13691877  
 Conc: 210.70 ng/ml



#10 AR-1221-3

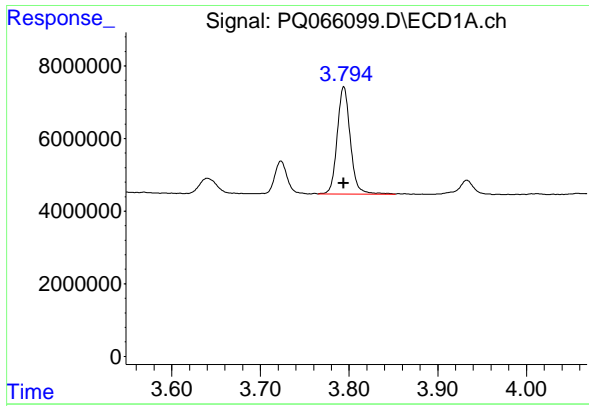
R.T.: 3.794 min  
 Delta R.T.: -0.006 min  
 Response: 30434694  
 Conc: 258.30 ng/ml



#10 AR-1221-3

R.T.: 3.079 min  
 Delta R.T.: -0.002 min  
 Response: 48552141  
 Conc: 248.60 ng/ml

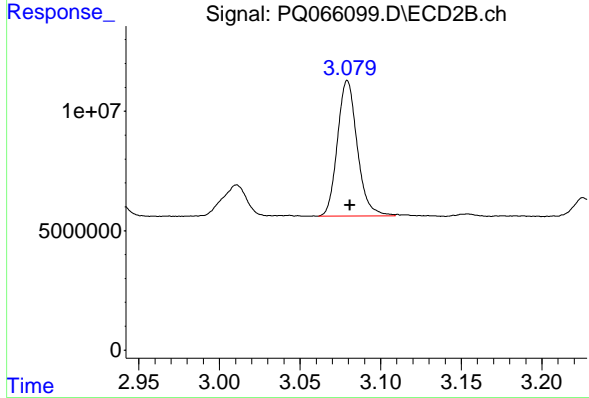




#11 AR-1232-1

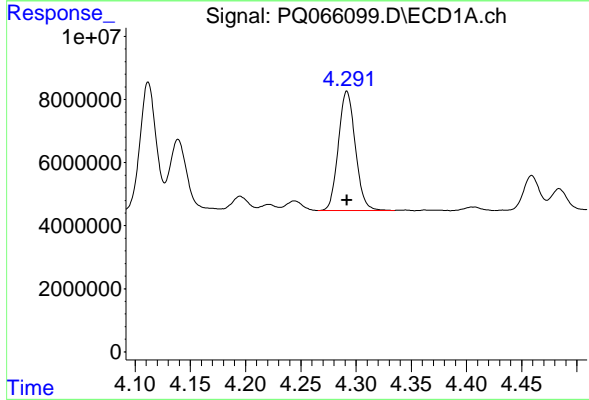
R.T.: 3.794 min  
 Delta R.T.: 0.000 min  
 Response: 30434694  
 Conc: 310.66 ng/ml

Instrument :  
 ECD\_Q  
 ClientSampleId :  
 AR1242CCC500



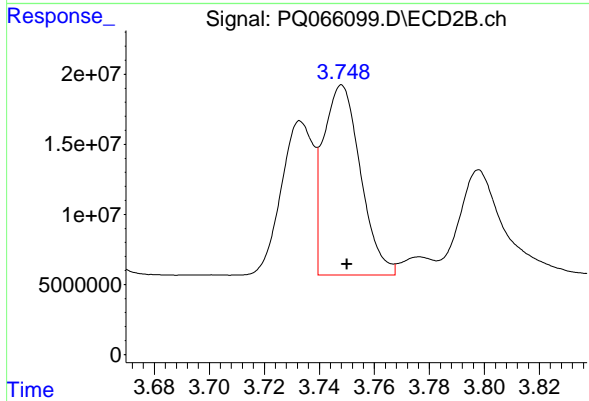
#11 AR-1232-1

R.T.: 3.079 min  
 Delta R.T.: -0.002 min  
 Response: 48552141  
 Conc: 296.25 ng/ml



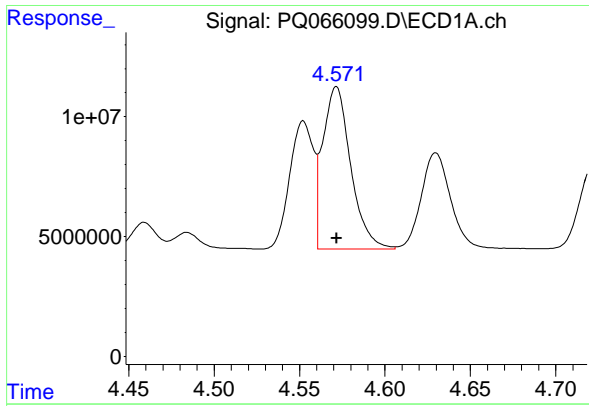
#12 AR-1232-2

R.T.: 4.292 min  
 Delta R.T.: 0.000 min  
 Response: 40540860  
 Conc: 807.07 ng/ml



#12 AR-1232-2

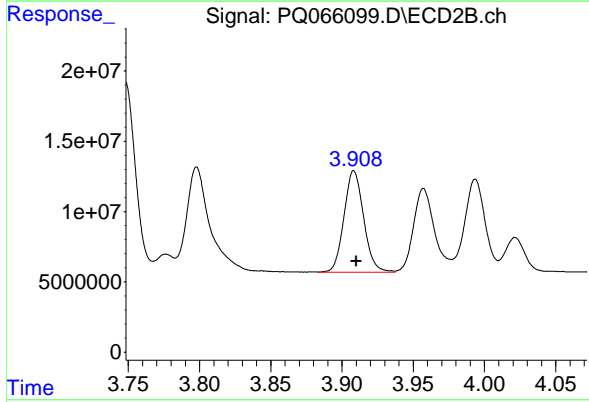
R.T.: 3.748 min  
 Delta R.T.: -0.002 min  
 Response: 126952792  
 Conc: 734.15 ng/ml



#13 AR-1232-3

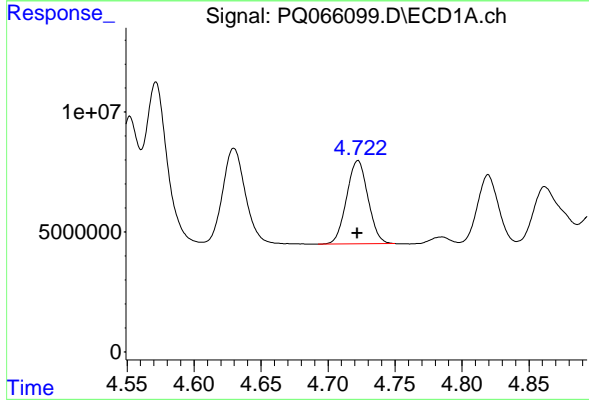
R.T.: 4.572 min  
 Delta R.T.: 0.000 min  
 Response: 76951683  
 Conc: 811.14 ng/ml

Instrument :  
 ECD\_Q  
 ClientSampleId :  
 AR1242CCC500



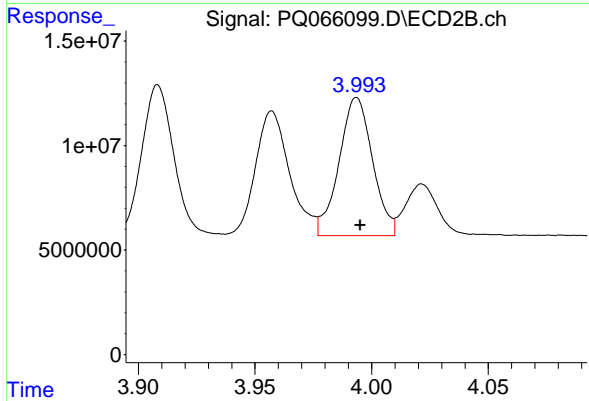
#13 AR-1232-3

R.T.: 3.908 min  
 Delta R.T.: -0.002 min  
 Response: 69261666  
 Conc: 741.94 ng/ml



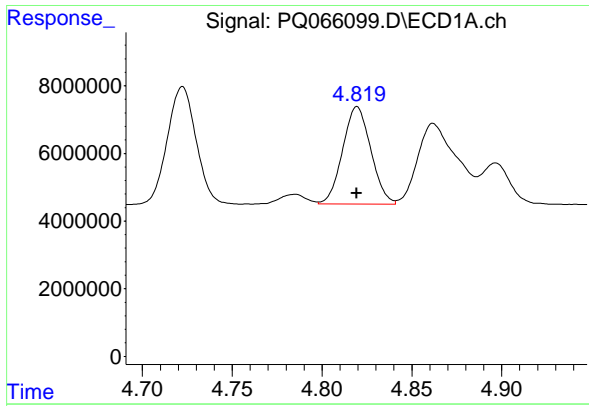
#14 AR-1232-4

R.T.: 4.722 min  
 Delta R.T.: 0.000 min  
 Response: 38520305  
 Conc: 817.98 ng/ml



#14 AR-1232-4

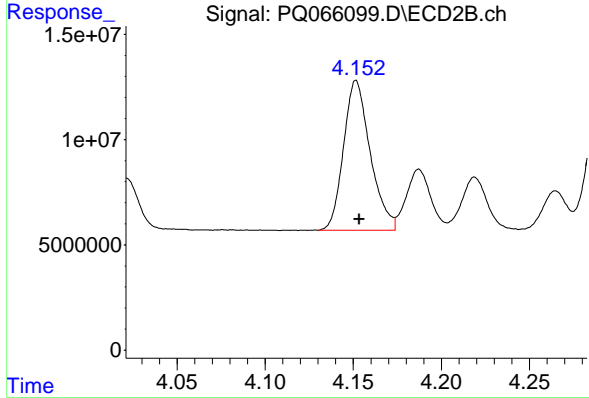
R.T.: 3.994 min  
 Delta R.T.: -0.002 min  
 Response: 66275270  
 Conc: 830.68 ng/ml



#15 AR-1232-5

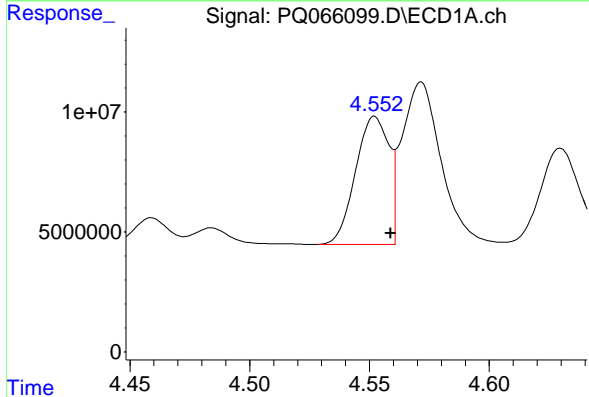
R.T.: 4.820 min  
 Delta R.T.: 0.000 min  
 Response: 31496289  
 Conc: 983.29 ng/ml

Instrument :  
 ECD\_Q  
 ClientSampleId :  
 AR1242CCC500



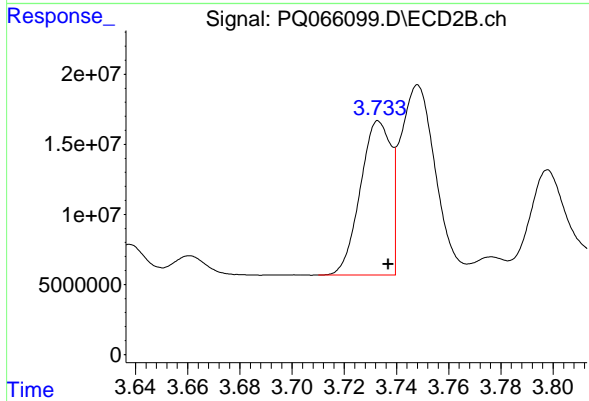
#15 AR-1232-5

R.T.: 4.152 min  
 Delta R.T.: -0.002 min  
 Response: 74982663  
 Conc: 831.23 ng/ml



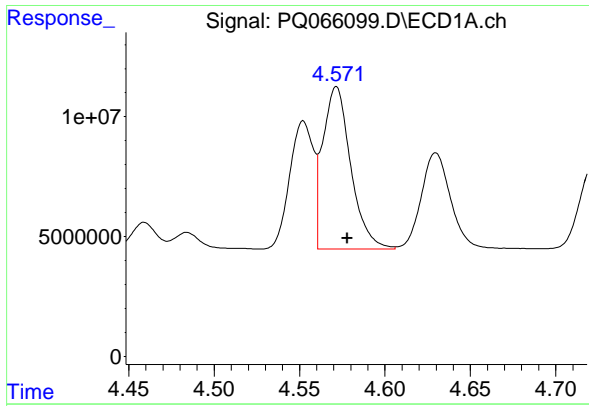
#16 AR-1242-1

R.T.: 4.552 min  
 Delta R.T.: -0.007 min  
 Response: 51754085  
 Conc: 482.88 ng/ml



#16 AR-1242-1

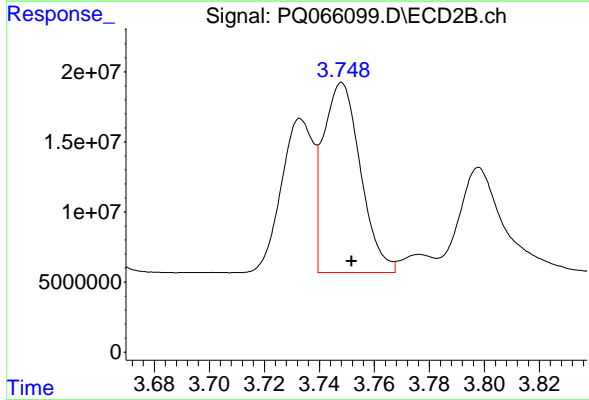
R.T.: 3.733 min  
 Delta R.T.: -0.004 min  
 Response: 88825168  
 Conc: 448.56 ng/ml



#17 AR-1242-2

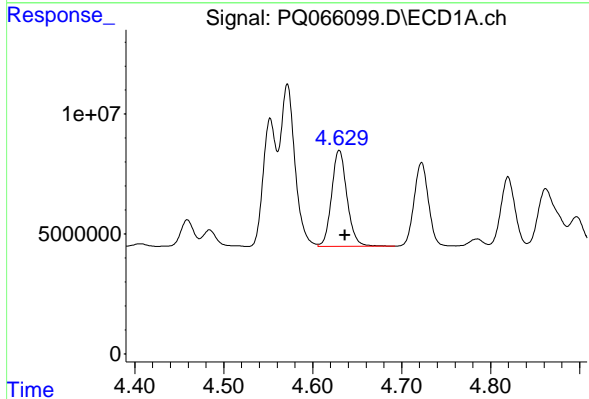
R.T.: 4.572 min  
 Delta R.T.: -0.006 min  
 Response: 76951683  
 Conc: 495.35 ng/ml

Instrument :  
 ECD\_Q  
 ClientSampleId :  
 AR1242CCC500



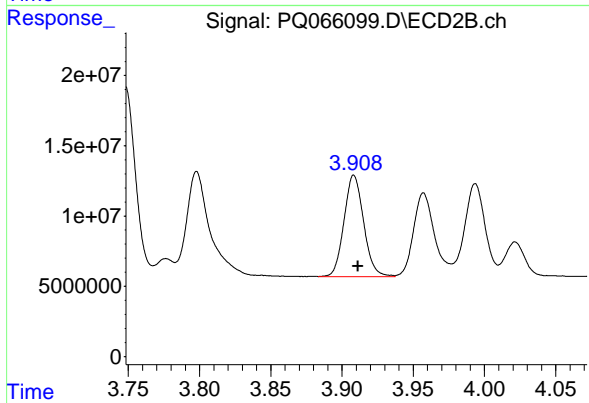
#17 AR-1242-2

R.T.: 3.748 min  
 Delta R.T.: -0.003 min  
 Response: 126952792  
 Conc: 453.83 ng/ml



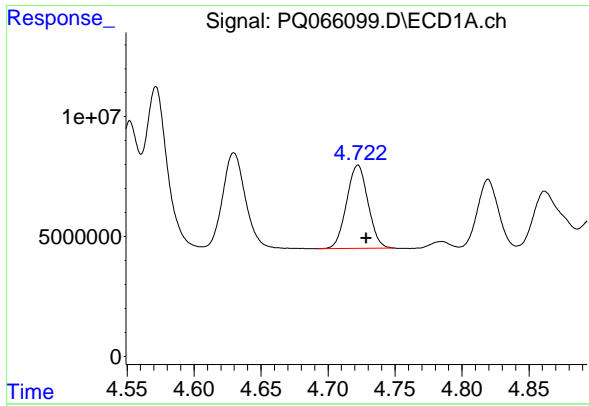
#18 AR-1242-3

R.T.: 4.630 min  
 Delta R.T.: -0.006 min  
 Response: 48029706  
 Conc: 484.25 ng/ml



#18 AR-1242-3

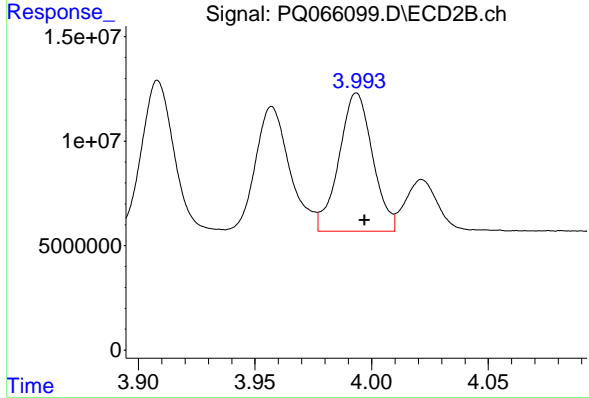
R.T.: 3.908 min  
 Delta R.T.: -0.003 min  
 Response: 69261666  
 Conc: 445.40 ng/ml



#19 AR-1242-4

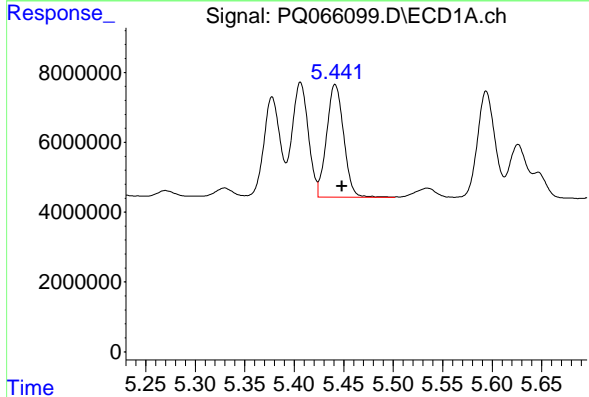
R.T.: 4.722 min  
 Delta R.T.: -0.006 min  
 Response: 38520305  
 Conc: 471.09 ng/ml

Instrument :  
 ECD\_Q  
 ClientSampleId :  
 AR1242CCC500



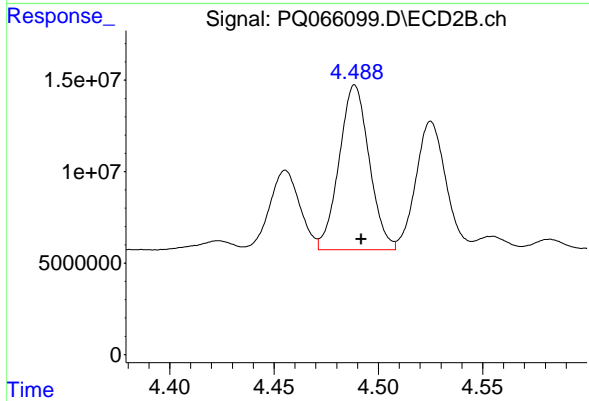
#19 AR-1242-4

R.T.: 3.994 min  
 Delta R.T.: -0.003 min  
 Response: 66275270  
 Conc: 443.86 ng/ml



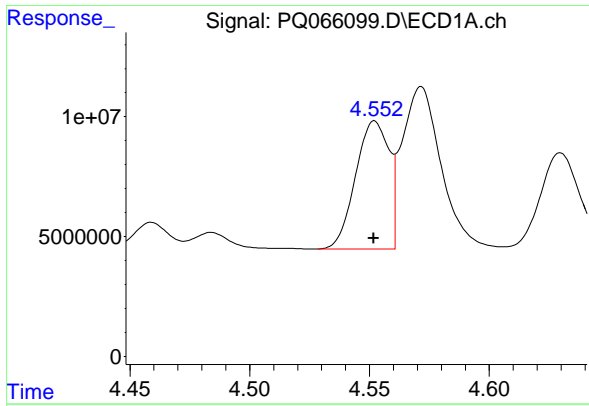
#20 AR-1242-5

R.T.: 5.441 min  
 Delta R.T.: -0.007 min  
 Response: 38698594  
 Conc: 475.16 ng/ml



#20 AR-1242-5

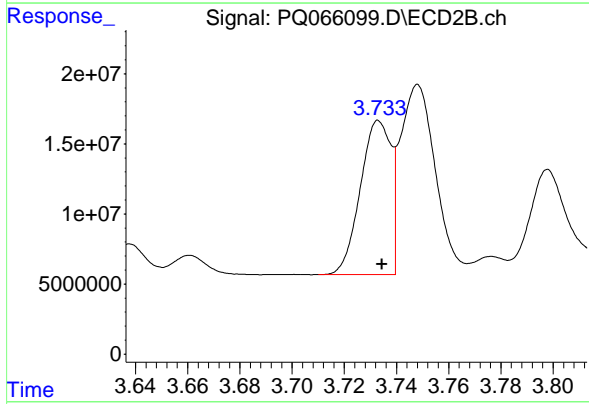
R.T.: 4.489 min  
 Delta R.T.: -0.003 min  
 Response: 90358470  
 Conc: 444.73 ng/ml



#21 AR-1248-1

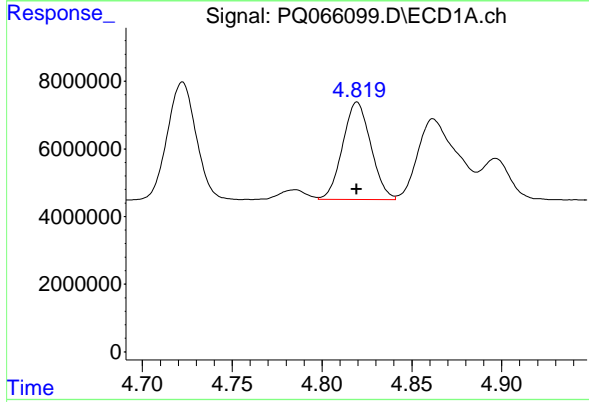
R.T.: 4.552 min  
 Delta R.T.: 0.000 min  
 Response: 51754085  
 Conc: 640.81 ng/ml

Instrument :  
 ECD\_Q  
 ClientSampleId :  
 AR1242CCC500



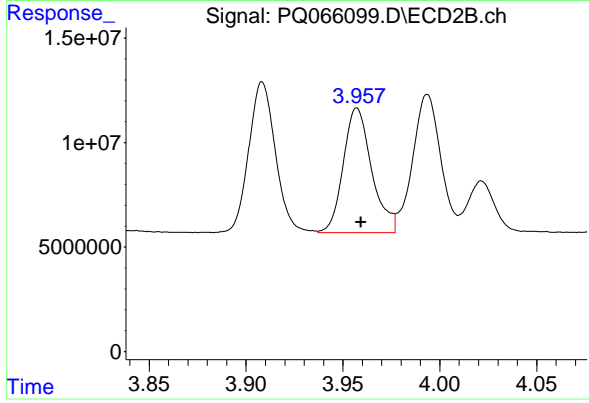
#21 AR-1248-1

R.T.: 3.733 min  
 Delta R.T.: -0.001 min  
 Response: 88825168  
 Conc: 576.53 ng/ml



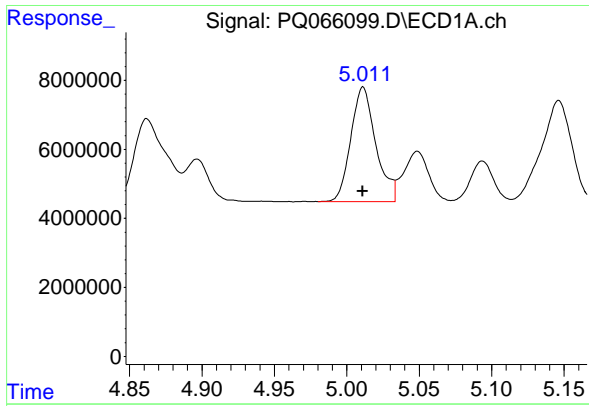
#22 AR-1248-2

R.T.: 4.820 min  
 Delta R.T.: 0.000 min  
 Response: 31496289  
 Conc: 281.21 ng/ml



#22 AR-1248-2

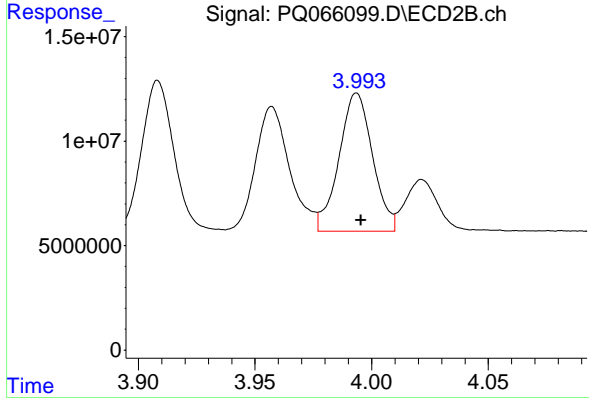
R.T.: 3.957 min  
 Delta R.T.: -0.002 min  
 Response: 60824920  
 Conc: 264.14 ng/ml



#23 AR-1248-3

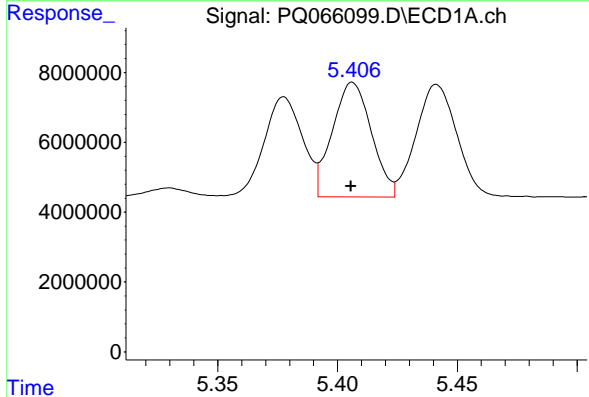
R.T.: 5.011 min  
 Delta R.T.: 0.000 min  
 Response: 39948685  
 Conc: 296.90 ng/ml

Instrument :  
 ECD\_Q  
 ClientSampleId :  
 AR1242CCC500



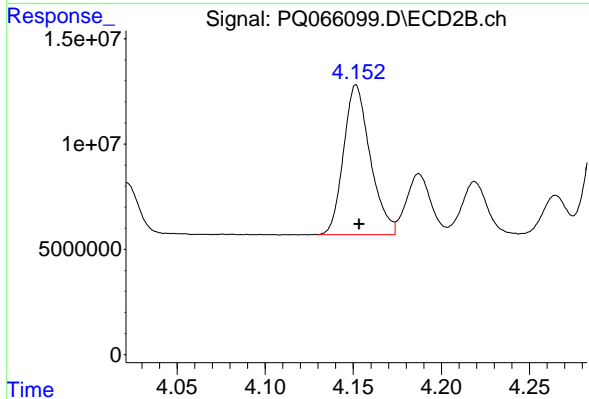
#23 AR-1248-3

R.T.: 3.994 min  
 Delta R.T.: -0.002 min  
 Response: 66275270  
 Conc: 299.94 ng/ml



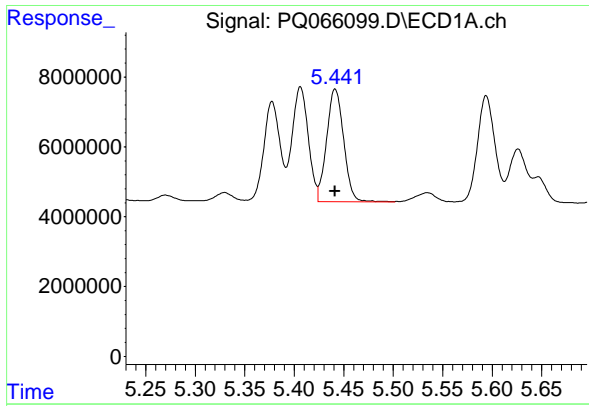
#24 AR-1248-4

R.T.: 5.406 min  
 Delta R.T.: 0.000 min  
 Response: 37264950  
 Conc: 260.92 ng/ml



#24 AR-1248-4

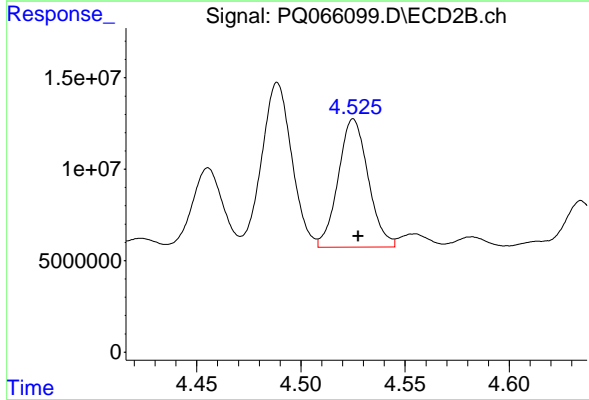
R.T.: 4.152 min  
 Delta R.T.: -0.002 min  
 Response: 74982663  
 Conc: 276.43 ng/ml



#25 AR-1248-5

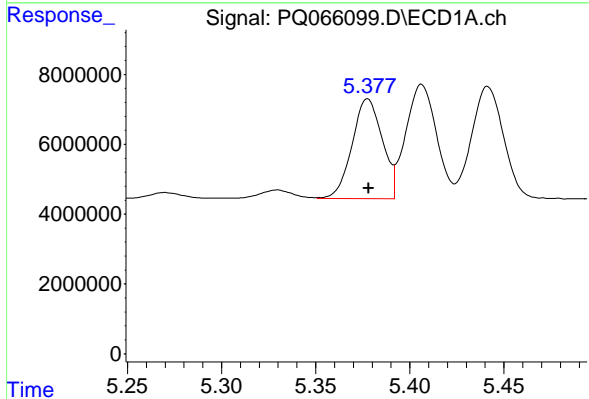
R.T.: 5.441 min  
 Delta R.T.: 0.000 min  
 Response: 38698594  
 Conc: 270.14 ng/ml

Instrument :  
 ECD\_Q  
 ClientSampleId :  
 AR1242CCC500



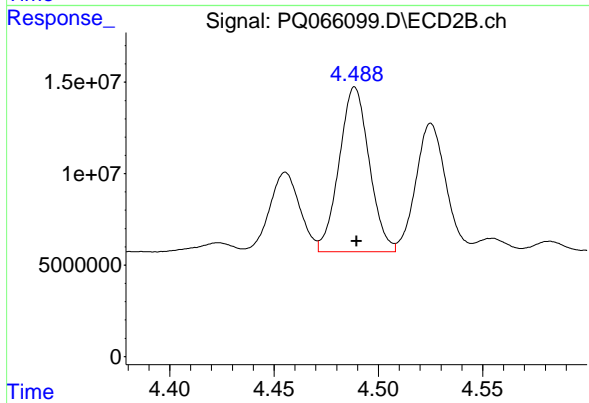
#25 AR-1248-5

R.T.: 4.525 min  
 Delta R.T.: -0.002 min  
 Response: 70247459  
 Conc: 259.95 ng/ml



#26 AR-1254-1

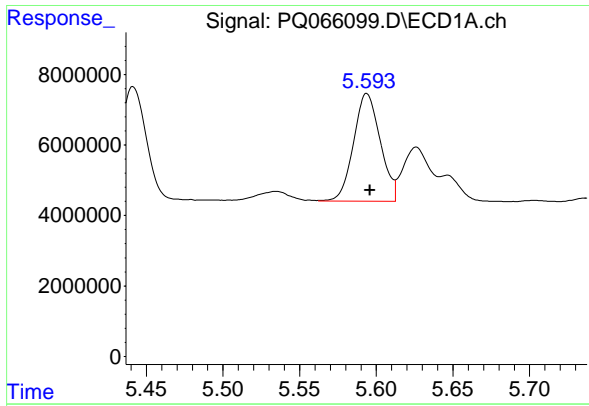
R.T.: 5.378 min  
 Delta R.T.: 0.000 min  
 Response: 32031623  
 Conc: 211.34 ng/ml



#26 AR-1254-1

R.T.: 4.489 min  
 Delta R.T.: 0.000 min  
 Response: 90358470  
 Conc: 224.81 ng/ml

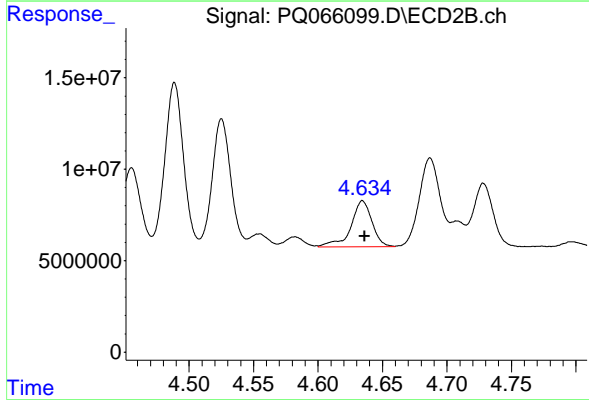




#27 AR-1254-2

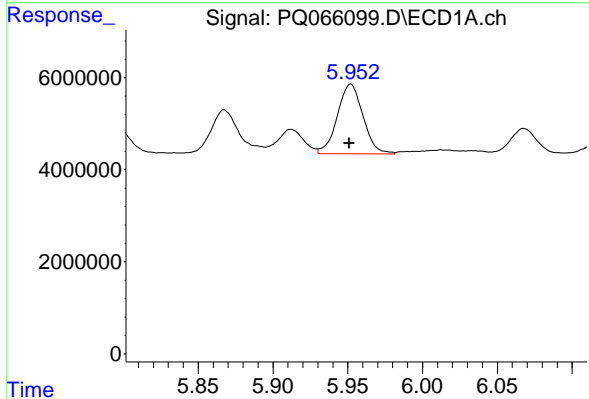
R.T.: 5.594 min  
 Delta R.T.: -0.002 min  
 Response: 37385255  
 Conc: 162.43 ng/ml

Instrument :  
 ECD\_Q  
 ClientSampleId :  
 AR1242CCC500



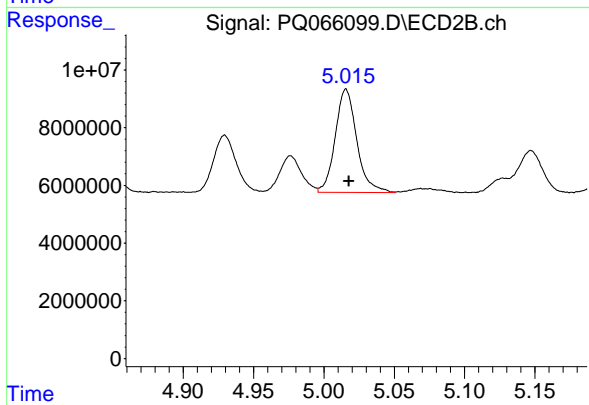
#27 AR-1254-2

R.T.: 4.634 min  
 Delta R.T.: -0.002 min  
 Response: 28789352  
 Conc: 78.32 ng/ml



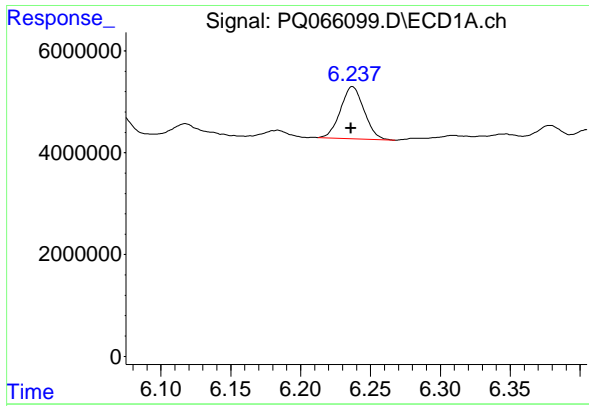
#28 AR-1254-3

R.T.: 5.952 min  
 Delta R.T.: 0.000 min  
 Response: 18036253  
 Conc: 76.21 ng/ml



#28 AR-1254-3

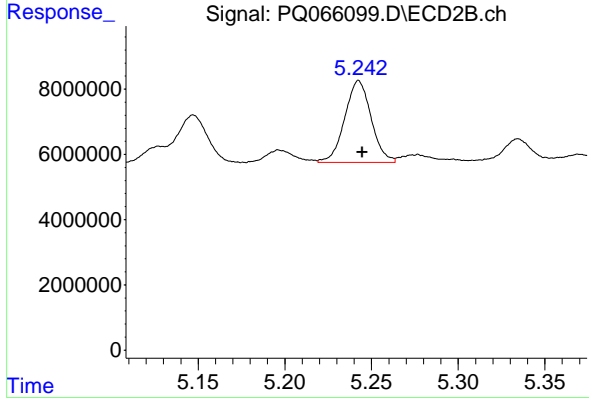
R.T.: 5.016 min  
 Delta R.T.: -0.002 min  
 Response: 38150140  
 Conc: 65.80 ng/ml



#29 AR-1254-4

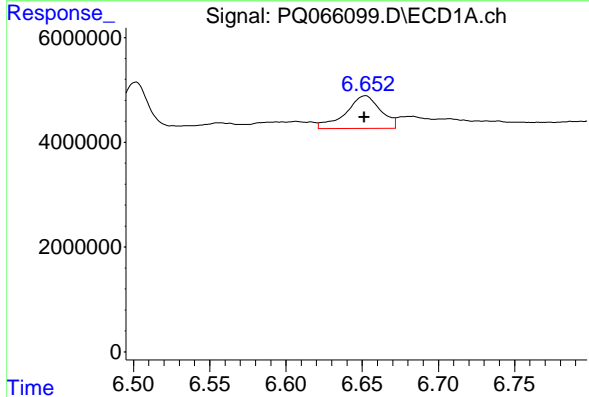
R.T.: 6.237 min  
 Delta R.T.: 0.001 min  
 Response: 12052356  
 Conc: 68.95 ng/ml

Instrument : ECD\_Q  
 ClientSampleId : AR1242CCC500



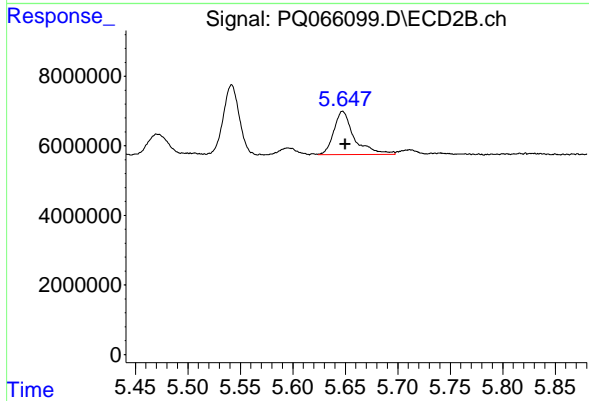
#29 AR-1254-4

R.T.: 5.243 min  
 Delta R.T.: -0.002 min  
 Response: 26726069  
 Conc: 68.64 ng/ml



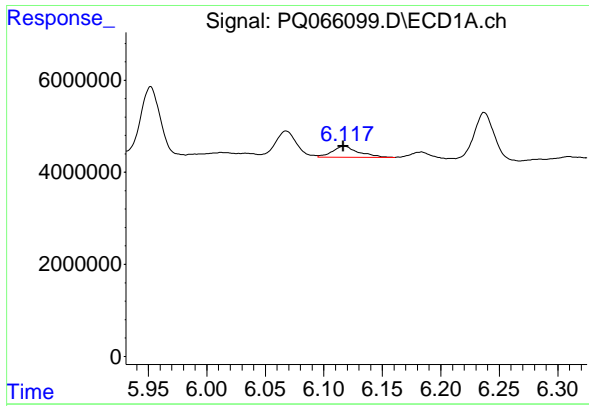
#30 AR-1254-5

R.T.: 6.652 min  
 Delta R.T.: 0.000 min  
 Response: 9987043  
 Conc: 51.76 ng/ml



#30 AR-1254-5

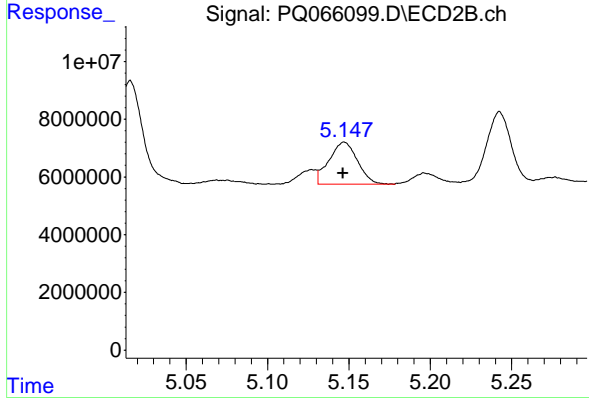
R.T.: 5.648 min  
 Delta R.T.: -0.003 min  
 Response: 16881106  
 Conc: 29.58 ng/ml



#31 AR-1260-1

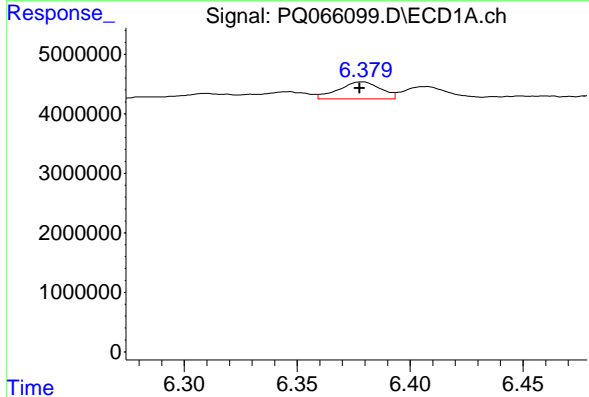
R.T.: 6.118 min  
 Delta R.T.: 0.000 min  
 Response: 3674784  
 Conc: 17.92 ng/ml

Instrument :  
 ECD\_Q  
 ClientSampleId :  
 AR1242CCC500



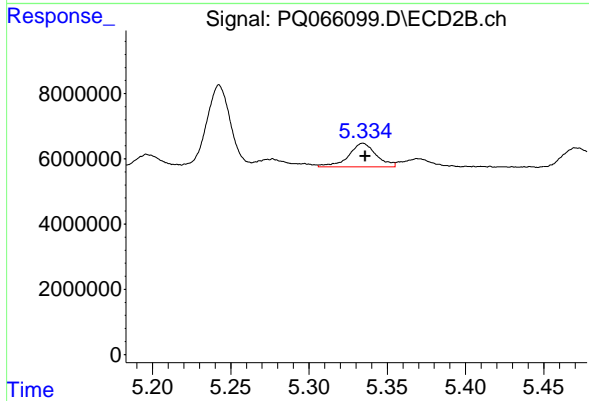
#31 AR-1260-1

R.T.: 5.147 min  
 Delta R.T.: 0.000 min  
 Response: 17805761  
 Conc: 37.32 ng/ml



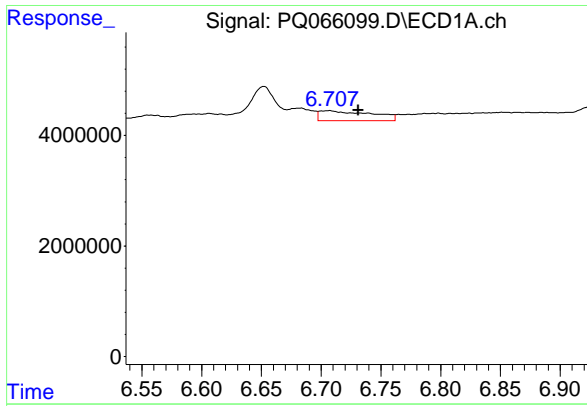
#32 AR-1260-2

R.T.: 6.379 min  
 Delta R.T.: 0.001 min  
 Response: 3683172  
 Conc: 14.81 ng/ml



#32 AR-1260-2

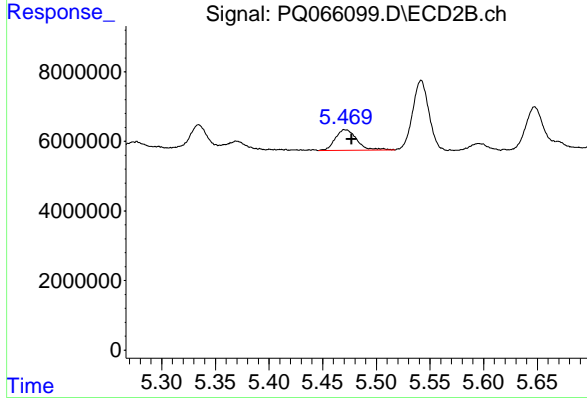
R.T.: 5.334 min  
 Delta R.T.: -0.002 min  
 Response: 8958392  
 Conc: 16.27 ng/ml



#33 AR-1260-3

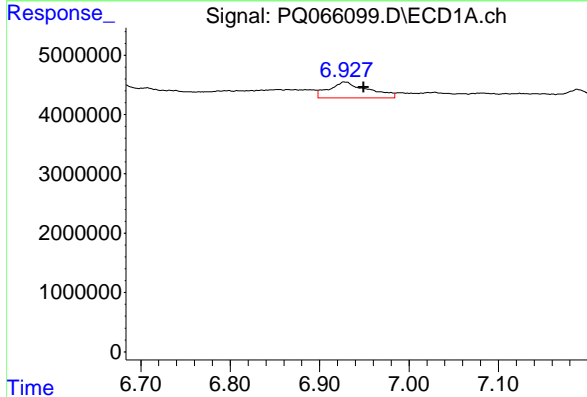
R.T.: 6.707 min  
 Delta R.T.: -0.024 min  
 Response: 5427789  
 Conc: 34.50 ng/ml

Instrument :  
 ECD\_Q  
 ClientSampleId :  
 AR1242CCC500



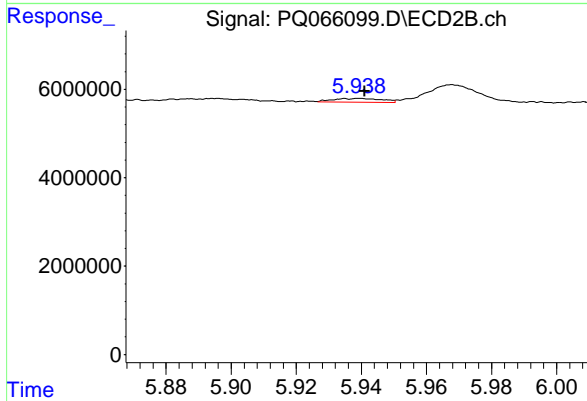
#33 AR-1260-3

R.T.: 5.471 min  
 Delta R.T.: -0.006 min  
 Response: 8244588  
 Conc: 15.69 ng/ml



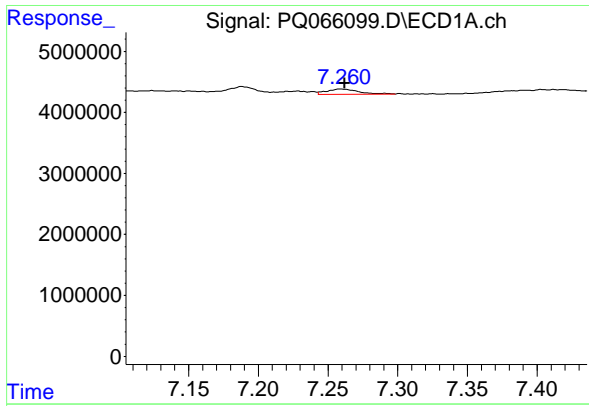
#34 AR-1260-4

R.T.: 6.928 min  
 Delta R.T.: -0.021 min  
 Response: 8158811  
 Conc: 43.61 ng/ml



#34 AR-1260-4

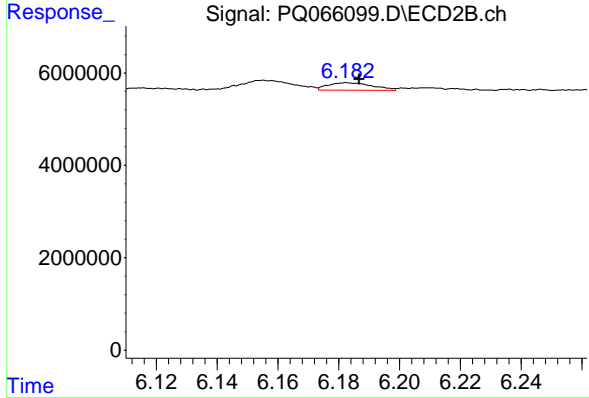
R.T.: 5.940 min  
 Delta R.T.: -0.002 min  
 Response: 884270  
 Conc: 2.78 ng/ml



#35 AR-1260-5

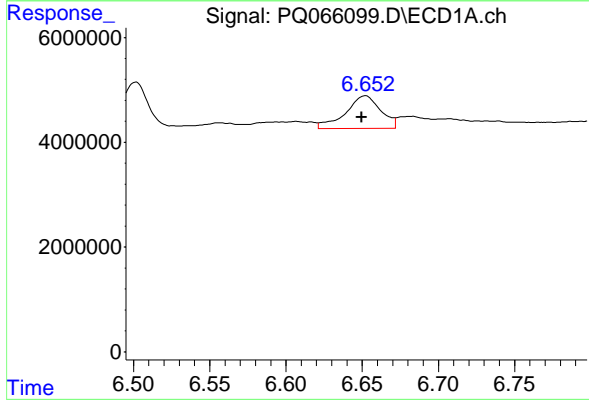
R.T.: 7.259 min  
 Delta R.T.: -0.003 min  
 Response: 1369038  
 Conc: 4.04 ng/ml

Instrument : ECD\_Q  
 ClientSampleId : AR1242CCC500



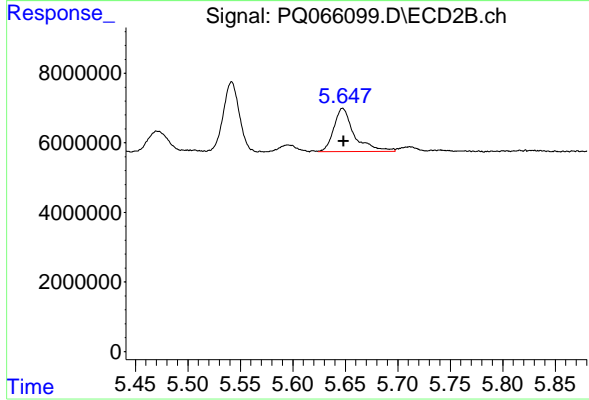
#35 AR-1260-5

R.T.: 6.183 min  
 Delta R.T.: -0.004 min  
 Response: 1630899  
 Conc: 1.83 ng/ml



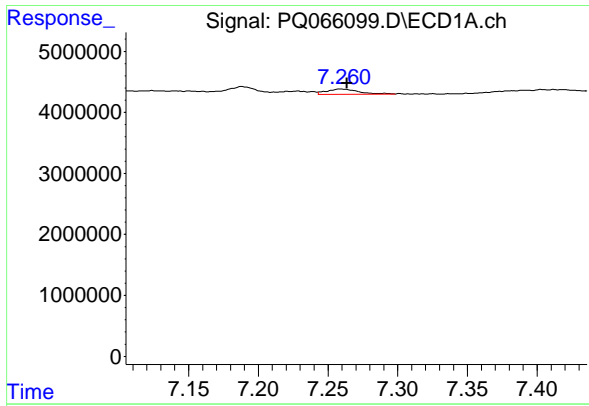
#36 AR-1262-1

R.T.: 6.652 min  
 Delta R.T.: 0.003 min  
 Response: 9987043  
 Conc: 70.40 ng/ml



#36 AR-1262-1

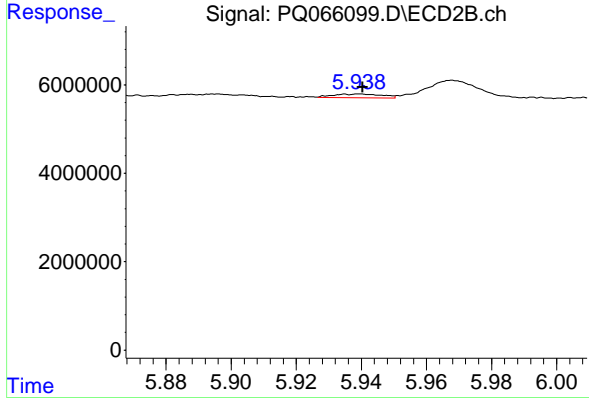
R.T.: 5.648 min  
 Delta R.T.: 0.000 min  
 Response: 16881106  
 Conc: 61.55 ng/ml



#37 AR-1262-2

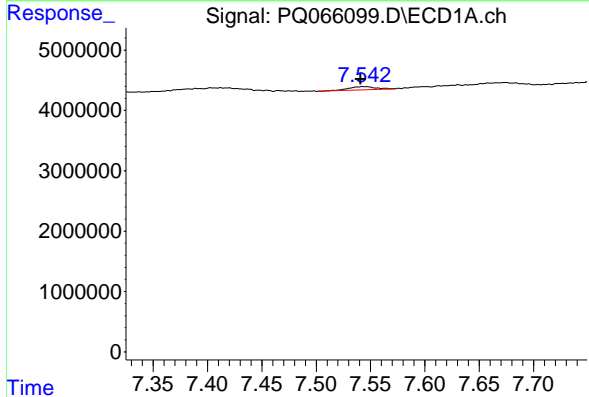
R.T.: 7.259 min  
 Delta R.T.: -0.004 min  
 Response: 1369038  
 Conc: 3.92 ng/ml

Instrument :  
 ECD\_Q  
 ClientSampleId :  
 AR1242CCC500



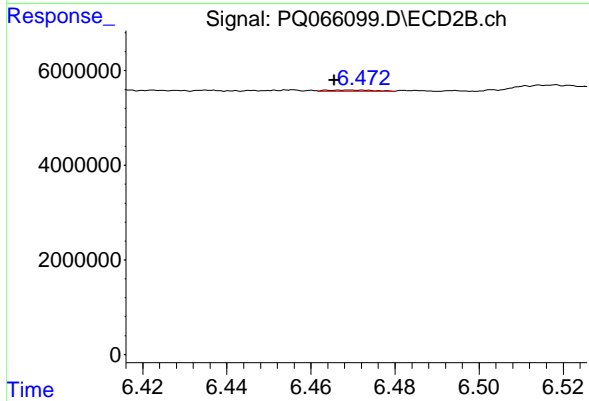
#37 AR-1262-2

R.T.: 5.940 min  
 Delta R.T.: 0.000 min  
 Response: 884270  
 Conc: 1.73 ng/ml



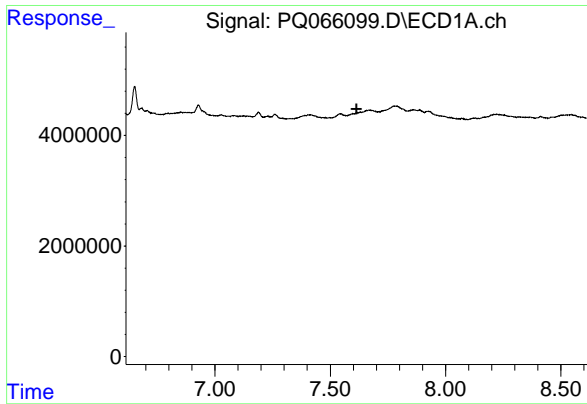
#38 AR-1262-3

R.T.: 7.543 min  
 Delta R.T.: 0.002 min  
 Response: 1029272  
 Conc: 4.01 ng/ml



#38 AR-1262-3

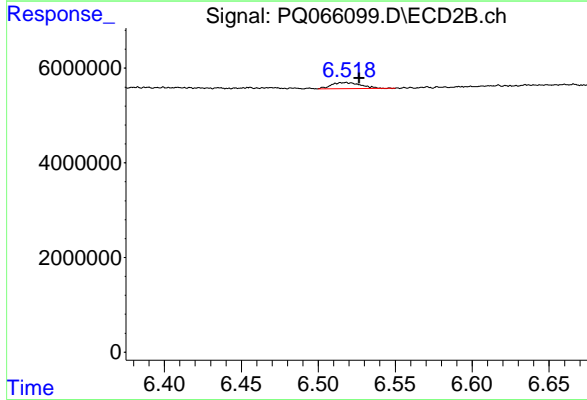
R.T.: 6.469 min  
 Delta R.T.: 0.003 min  
 Response: 204367  
 Conc: 0.47 ng/ml



#39 AR-1262-4

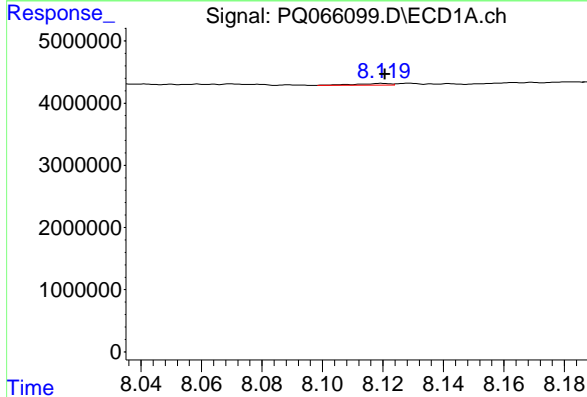
R.T.: 0.000 min  
 Exp R.T.: 7.614 min  
 Response: 0  
 Conc: N.D.

Instrument :  
 ECD\_Q  
 ClientSampleId :  
 AR1242CCC500



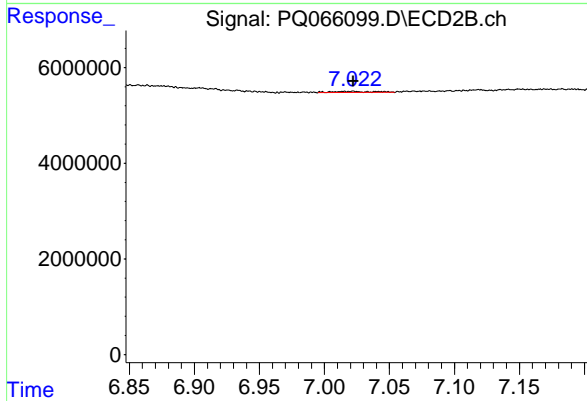
#39 AR-1262-4

R.T.: 6.518 min  
 Delta R.T.: -0.009 min  
 Response: 1740605  
 Conc: 2.35 ng/ml



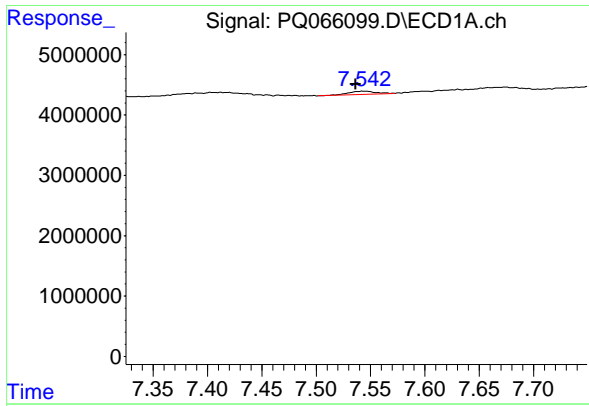
#40 AR-1262-5

R.T.: 8.120 min  
 Delta R.T.: 0.000 min  
 Response: 204426  
 Conc: 1.65 ng/ml



#40 AR-1262-5

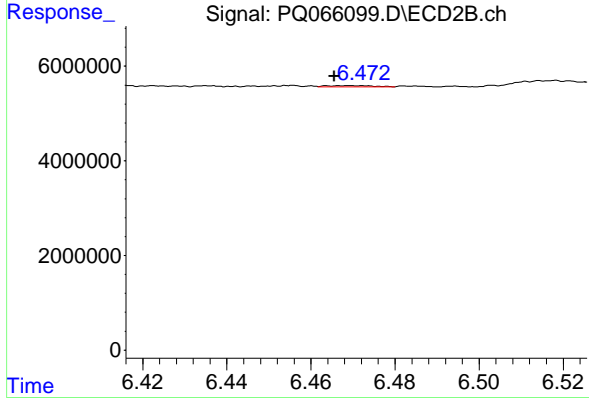
R.T.: 7.022 min  
 Delta R.T.: 0.000 min  
 Response: 437234  
 Conc: 1.27 ng/ml



#41 AR-1268-1

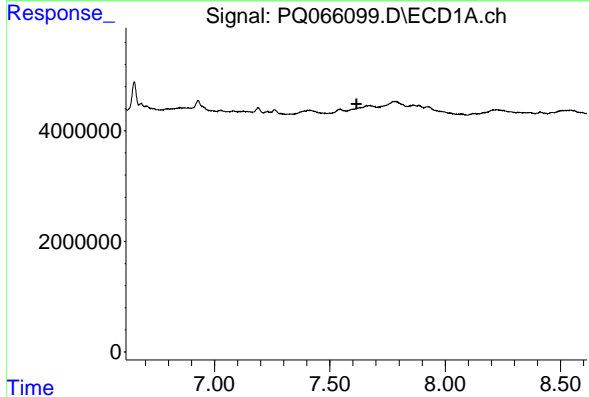
R.T.: 7.543 min  
 Delta R.T.: 0.007 min  
 Response: 1029272  
 Conc: 2.25 ng/ml

Instrument : ECD\_Q  
 ClientSampleId : AR1242CCC500



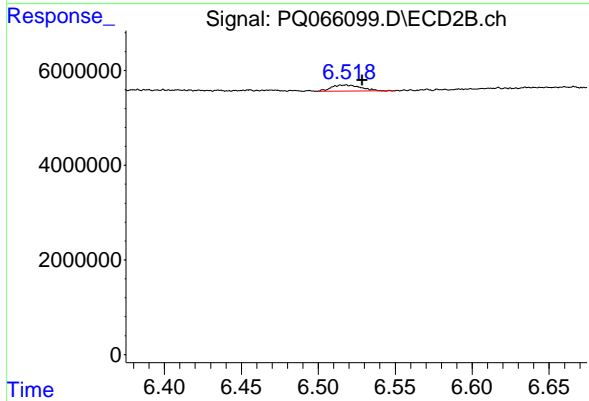
#41 AR-1268-1

R.T.: 6.469 min  
 Delta R.T.: 0.003 min  
 Response: 204367  
 Conc: 0.16 ng/ml



#42 AR-1268-2

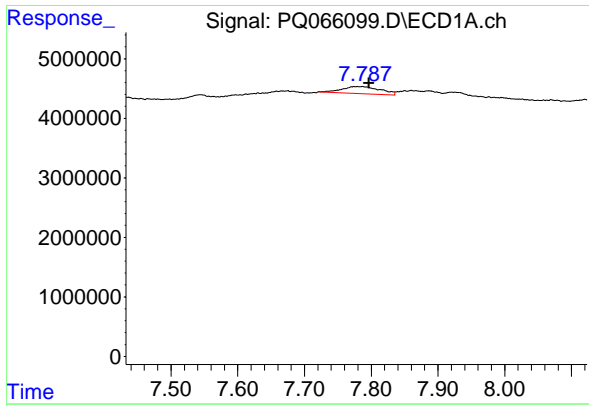
R.T.: 0.000 min  
 Exp R.T. : 7.615 min  
 Response: 0  
 Conc: N.D.



#42 AR-1268-2

R.T.: 6.518 min  
 Delta R.T.: -0.011 min  
 Response: 1740605  
 Conc: 1.52 ng/ml

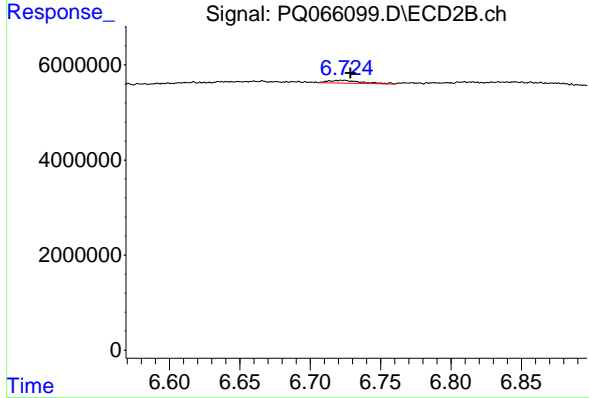




#43 AR-1268-3

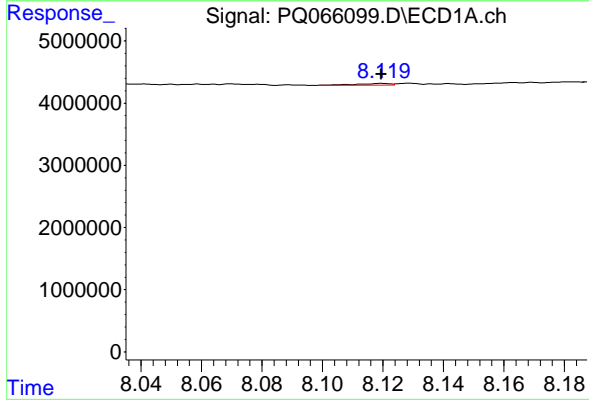
R.T.: 7.787 min  
 Delta R.T.: -0.010 min  
 Response: 4802588  
 Conc: 13.98 ng/ml

Instrument : ECD\_Q  
 ClientSampleId : AR1242CCC500



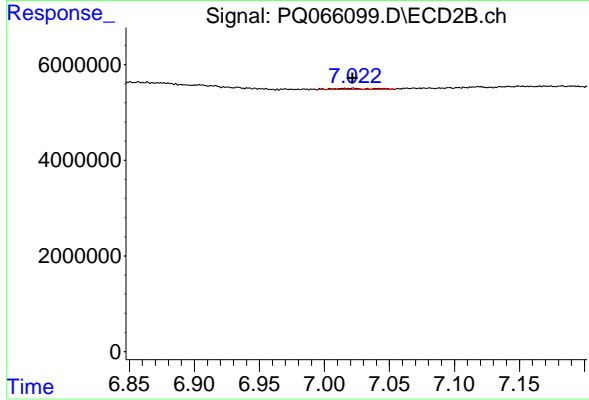
#43 AR-1268-3

R.T.: 6.724 min  
 Delta R.T.: -0.005 min  
 Response: 990199  
 Conc: 1.02 ng/ml



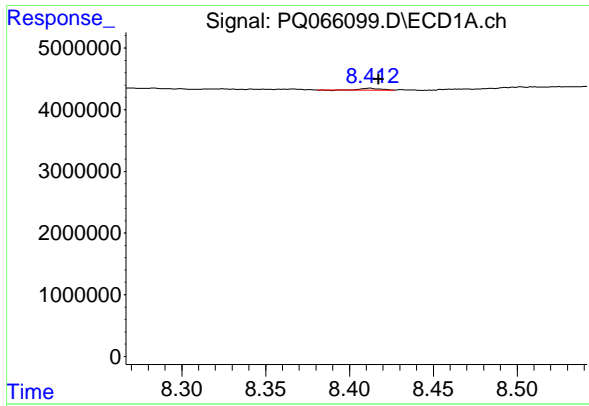
#44 AR-1268-4

R.T.: 8.120 min  
 Delta R.T.: 0.000 min  
 Response: 204426  
 Conc: 1.37 ng/ml



#44 AR-1268-4

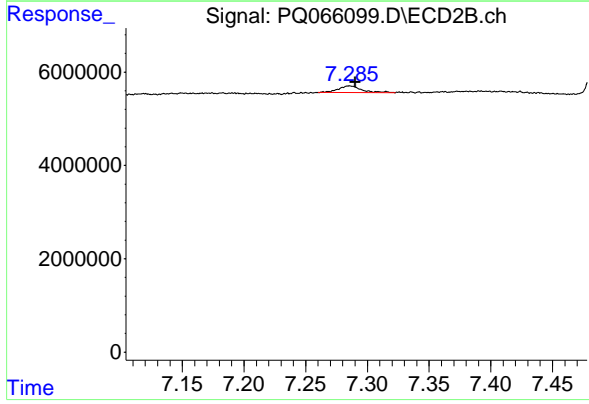
R.T.: 7.022 min  
 Delta R.T.: 0.000 min  
 Response: 437234  
 Conc: 1.03 ng/ml



#45 AR-1268-5

R.T.: 8.412 min  
Delta R.T.: -0.005 min  
Response: 275131  
Conc: 0.28 ng/ml

Instrument :  
ECD\_Q  
ClientSampleId :  
AR1242CCC500



#45 AR-1268-5

R.T.: 7.285 min  
Delta R.T.: -0.005 min  
Response: 1907018  
Conc: 0.67 ng/ml