

Data Path : Z:\pestpcbsrv\HPCHEM1\ECD_Q\Data\PQ041524\
Data File : PQ066071.D
Signal(s) : Signal #1: ECD1A.ch Signal #2: ECD2B.ch
Acq On : 15 Apr 2024 09:32
Operator : YP\AJ
Sample : HEXANE
Misc :
ALS Vial : 1 Sample Multiplier: 1

Instrument :
ECD_Q
ClientSampleId :
HEXANE

Integration File signal 1: autoint1.e
Integration File signal 2: autoint2.e
Quant Time: Apr 16 01:20:22 2024
Quant Method : Z:\pestpcbsrv\HPCHEM1\ECD_Q\Method\PQ031824.M
Quant Title : GC EXTRACTABLES
QLast Update : Tue Mar 19 12:55:45 2024
Response via : Initial Calibration
Integrator: ChemStation

Volume Inj. : 2 µl
Signal #1 Phase : ZB-MR1 Signal #2 Phase: ZB-MR2
Signal #1 Info : 30Mx0.32mmx 0.50µ Signal #2 Info : 30M x 0.32mm x 0.25µm

Compound	RT#1	RT#2	Resp#1	Resp#2	ng/ml	ng/ml

System Monitoring Compounds						
Target Compounds						

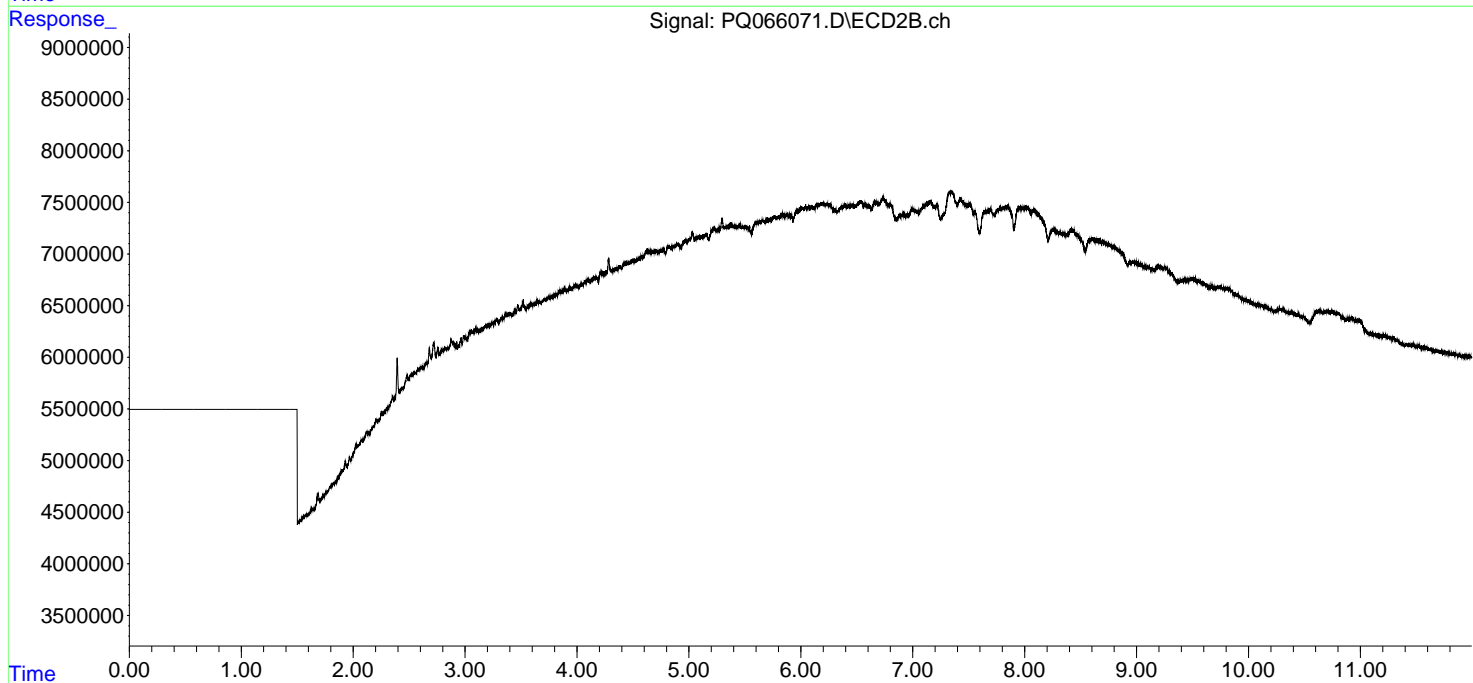
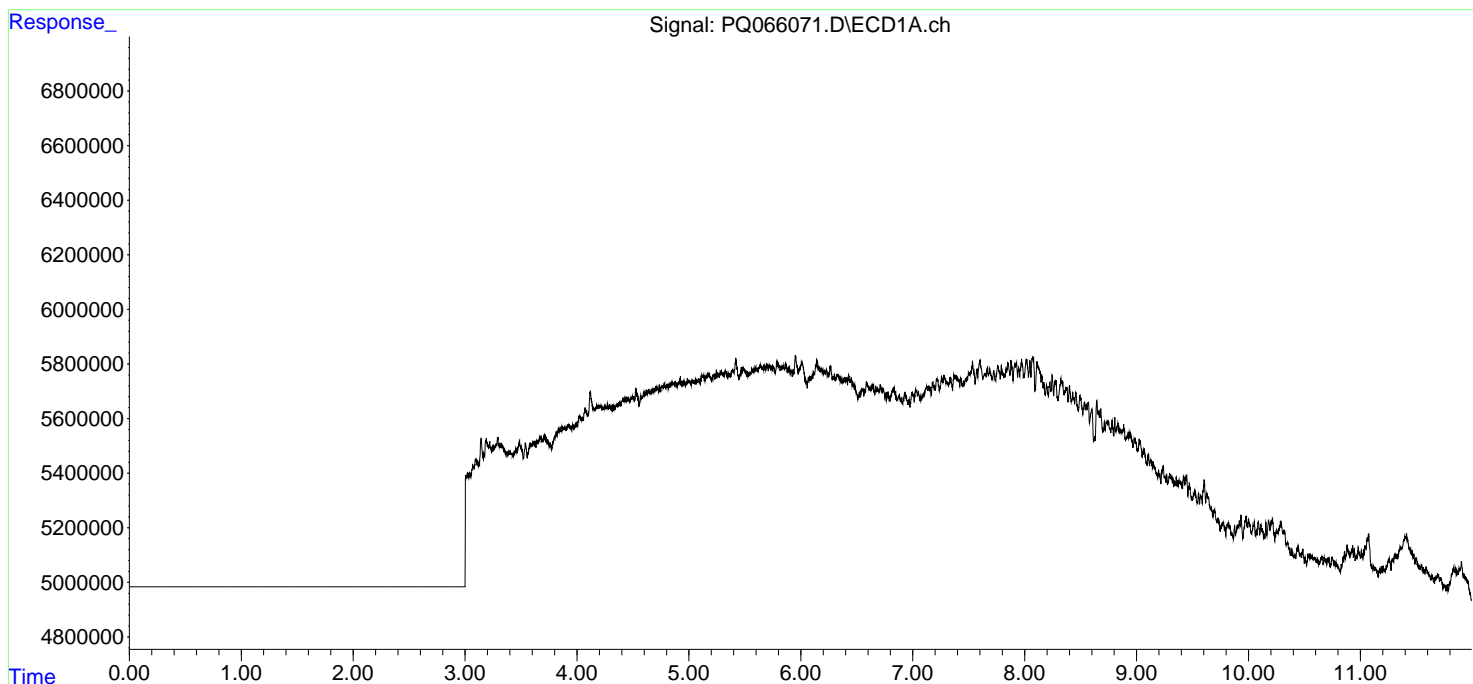
(f)=RT Delta > 1/2 Window (#)=Amounts differ by > 25% (m)=manual int.

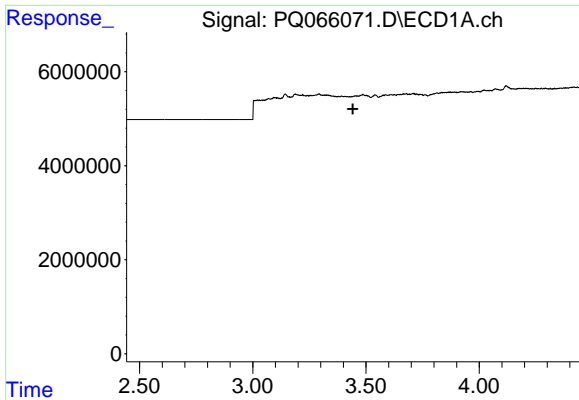
Data Path : Z:\pestpcbsrv\HPCHEM1\ECD_Q\Data\PQ041524\
 Data File : PQ066071.D
 Signal(s) : Signal #1: ECD1A.ch Signal #2: ECD2B.ch
 Acq On : 15 Apr 2024 09:32
 Operator : YP\AJ
 Sample : HEXANE
 Misc :
 ALS Vial : 1 Sample Multiplier: 1

Instrument :
 ECD_Q
ClientSampleId :
 HEXANE

Integration File signal 1: autoint1.e
 Integration File signal 2: autoint2.e
 Quant Time: Apr 16 01:20:22 2024
 Quant Method : Z:\pestpcbsrv\HPCHEM1\ECD_Q\Method\PQ031824.M
 Quant Title : GC EXTRACTABLES
 QLast Update : Tue Mar 19 12:55:45 2024
 Response via : Initial Calibration
 Integrator: ChemStation

Volume Inj. : 2 µl
 Signal #1 Phase : ZB-MR1 Signal #2 Phase: ZB-MR2
 Signal #1 Info : 30Mx0.32mmx 0.50µ Signal #2 Info : 30M x 0.32mm x 0.25µm

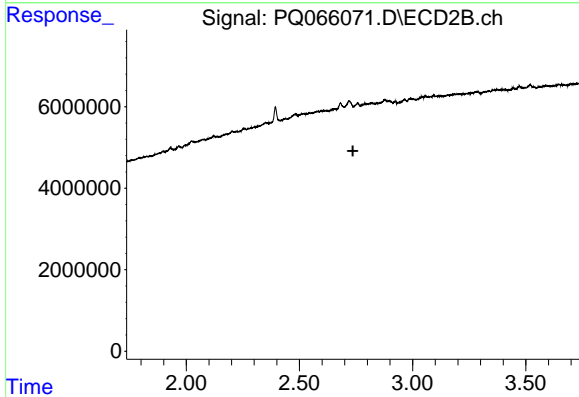




#1 Tetrachloro-m-xylene

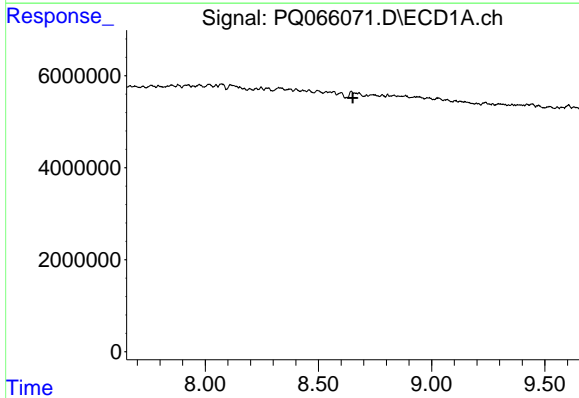
R.T.: 0.000 min
 Exp R.T. : 3.442 min
 Response: 0
 Conc: N.D.

Instrument : ECD_Q
 ClientSampleId : HEXANE



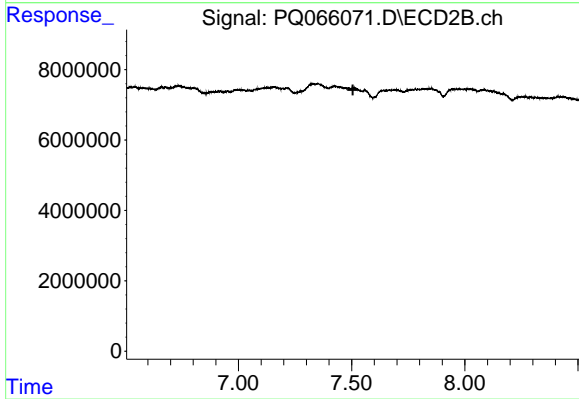
#1 Tetrachloro-m-xylene

R.T.: 0.000 min
 Exp R.T. : 2.736 min
 Response: 0
 Conc: N.D.



#2 Decachlorobiphenyl

R.T.: 0.000 min
 Exp R.T. : 8.652 min
 Response: 0
 Conc: N.D.



#2 Decachlorobiphenyl

R.T.: 0.000 min
 Exp R.T. : 7.506 min
 Response: 0
 Conc: N.D.