

Data Path : Z:\pestpcbsrv\HPCHEM1\ECD_Q\Data\PQ042221\
 Data File : PQ053134.D
 Signal(s) : Signal #1: ECD1A.ch Signal #2: ECD2B.ch
 Acq On : 22 Apr 2021 10:26
 Operator : DD\AJ
 Sample : M2084-07
 Misc :
 ALS Vial : 7 Sample Multiplier: 1

Instrument :
 ECD_Q
 ClientSampleId :
 A0AA8

Integration File signal 1: autoint1.e
 Integration File signal 2: autoint2.e
 Quant Time: Apr 22 22:04:16 2021
 Quant Method : Z:\pestpcbsrv\HPCHEM1\ECD_Q\Method\PQ042021CLP.M
 Quant Title : GC EXTRACTABLES
 QLast Update : Wed Apr 21 07:47:07 2021
 Response via : Initial Calibration
 Integrator: ChemStation

Volume Inj. : 1 µl
 Signal #1 Phase : ZB MR1 Signal #2 Phase: ZB MR2
 Signal #1 Info : 30Mx0.32mmx 0.5µm Signal #2 Info : 30M x 0.32mm x 0.25µm

Compound	RT#1	RT#2	Resp#1	Resp#2	ng/ml	ng/ml

System Monitoring Compounds						
1) SA Tetrachlo...	5.224	4.236	563.7E6	230.6E6	20.090	19.834
2) SA Decachlor...	11.417	9.580	964.5E6	415.5E6	34.103	33.380
Target Compounds						
5) L1 AR-1016-3	6.678f	0.000	3588159	0	4.081	N.D. #
6) L1 AR-1016-4	6.678f	0.000	3588159	0	4.953	N.D. #
9) L2 AR-1221-2	5.580	4.592	6954049	2465132	33.702	27.743
10) L2 AR-1221-3	0.000	4.635f	0	696693	N.D.	2.256 #
11) L3 AR-1232-1	0.000	4.635f	0	696693	N.D.	3.052 #
12) L3 AR-1232-2	6.189f	0.000	6463997	0	23.085	N.D. #
14) L3 AR-1232-4	6.678f	0.000	3588159	0	12.546	N.D. #
18) L4 AR-1242-3	6.678f	0.000	3588159	0	4.348	N.D. #
19) L4 AR-1242-4	6.678f	0.000	3588159	0	5.237	N.D. #
20) L4 AR-1242-5	7.525	6.393	9682389	29476654	13.272	74.404 #
24) L5 AR-1248-4	7.467	0.000	87692146	0	76.739	N.D. #
25) L5 AR-1248-5	7.525	6.393	9682389	29476654	8.496	59.905 #
26) L6 AR-1254-1	7.467	6.393	87692146	29476654	55.782	27.491 #
27) L6 AR-1254-2	0.000	6.540	0	57445282	N.D.	60.225 #
28) L6 AR-1254-3	8.096	6.967	20610134	30761205	7.832	19.861 #
29) L6 AR-1254-4	8.309f	7.147f	8628584	2139577	4.483	2.043 #
30) L6 AR-1254-5	8.789	7.620	30363467	2130680	14.843	1.460 #
31) L7 AR-1260-1	0.000	7.092	0	19686596	N.D.	30.379 #
32) L7 AR-1260-2	8.502	7.297	10261900	3897155	7.365	4.204 #
33) L7 AR-1260-3	8.933f	7.484f	34275690	3892834	32.013	5.003 #
34) L7 AR-1260-4	9.049f	7.919	8836224	1985947	7.297	2.925 #
35) L7 AR-1260-5	0.000	8.168	0	1994709	N.D.	1.078 #
36) L8 AR-1262-1	8.933f	7.620	34275690	2130680	17.137	3.476 #
37) L8 AR-1262-2	0.000	8.168	0	1994709	N.D.	0.785 #
38) L8 AR-1262-3	0.000	8.461	0	9267004	N.D.	9.122 #
39) L8 AR-1262-4	9.893	8.517	10081179	8764424	5.044	5.087
40) L8 AR-1262-5	0.000	8.966f	0	408297	N.D.	0.525 #
41) L9 AR-1268-1	0.000	8.461	0	9267004	N.D.	3.164 #
42) L9 AR-1268-2	9.893	8.517	10081179	8764424	2.351	3.520 #
43) L9 AR-1268-3	10.131	8.728	2597415	2572981	0.683	1.187 #
44) L9 AR-1268-4	0.000	8.966f	0	408297	N.D.	0.479 #
45) L9 AR-1268-5	11.051	9.320	31514986	3964382	2.447	0.639 #

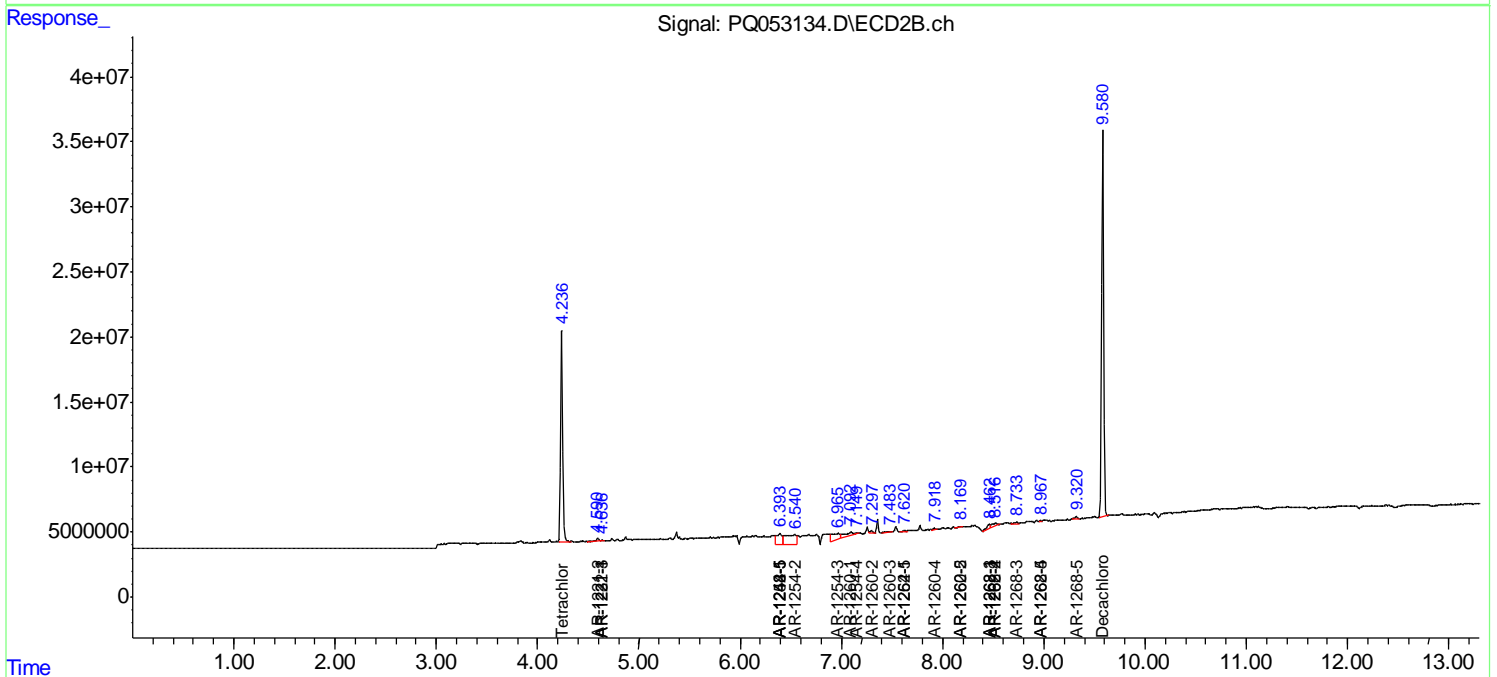
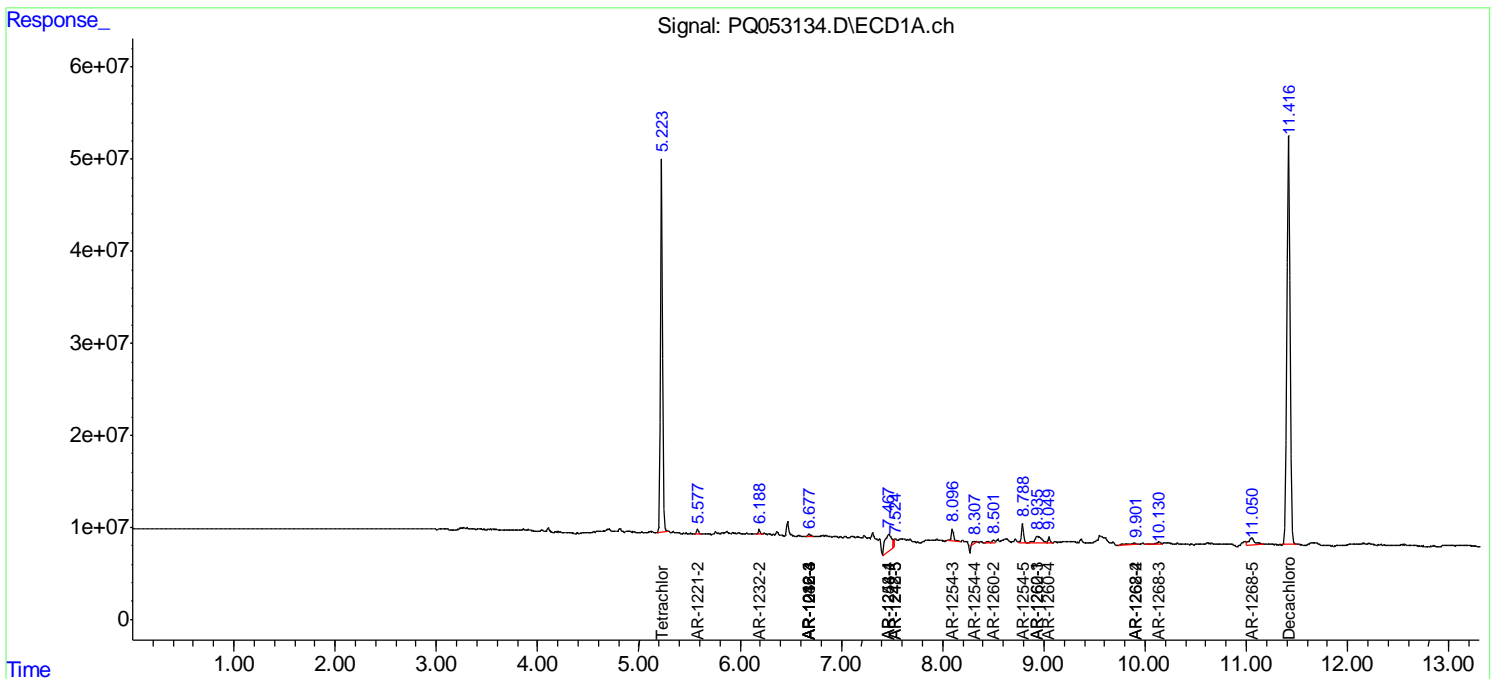
(f)=RT Delta > 1/2 Window (#)=Amounts differ by > 25% (m)=manual int.

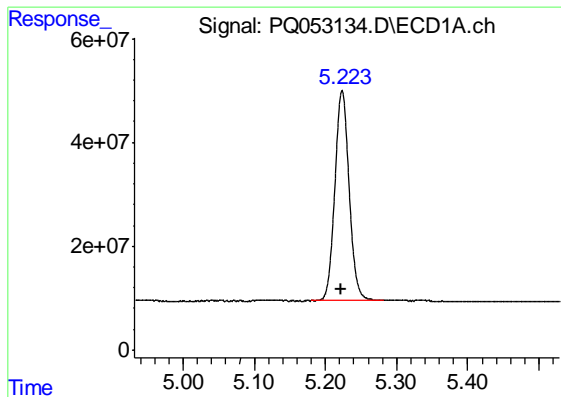
Data Path : Z:\pestpcbsrv\HPCHEM1\ECD_Q\Data\PQ042221\
 Data File : PQ053134.D
 Signal(s) : Signal #1: ECD1A.ch Signal #2: ECD2B.ch
 Acq On : 22 Apr 2021 10:26
 Operator : DD\AJ
 Sample : M2084-07
 Misc :
 ALS Vial : 7 Sample Multiplier: 1

Instrument :
 ECD_Q
Client Sampled :
 A0AA8

Integration File signal 1: autoint1.e
 Integration File signal 2: autoint2.e
 Quant Time: Apr 22 22:04:16 2021
 Quant Method : Z:\pestpcbsrv\HPCHEM1\ECD_Q\Method\PQ042021CLP.M
 Quant Title : GC EXTRACTABLES
 QLast Update : Wed Apr 21 07:47:07 2021
 Response via : Initial Calibration
 Integrator: ChemStation

Volume Inj. : 1 µl
 Signal #1 Phase : ZB MR1 Signal #2 Phase: ZB MR2
 Signal #1 Info : 30Mx0.32mmx 0.5µm Signal #2 Info : 30M x 0.32mm x 0.25µm

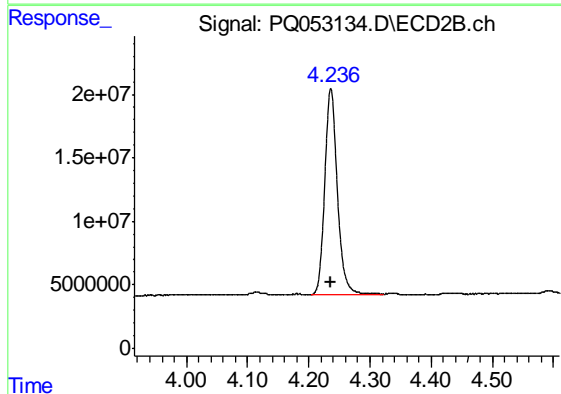




#1 Tetrachloro-m-xylene

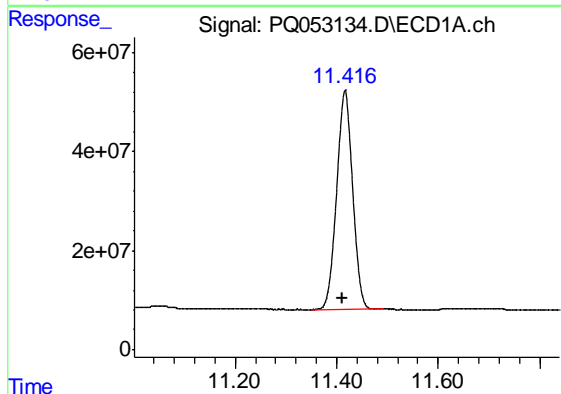
R.T.: 5.224 min
Delta R.T.: 0.002 min
Response: 563707122
Conc: 20.09 ng/ml

Instrument :
ECD_Q
ClientSampleId :
A0AA8



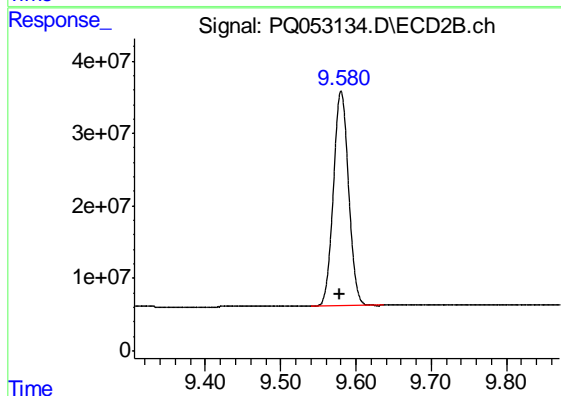
#1 Tetrachloro-m-xylene

R.T.: 4.236 min
Delta R.T.: 0.000 min
Response: 230646115
Conc: 19.83 ng/ml



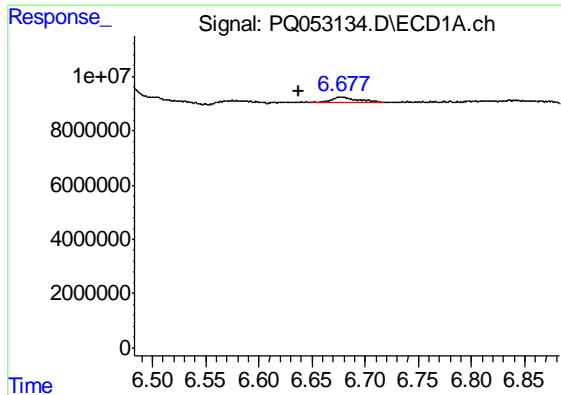
#2 Decachlorobiphenyl

R.T.: 11.417 min
Delta R.T.: 0.005 min
Response: 964491189
Conc: 34.10 ng/ml



#2 Decachlorobiphenyl

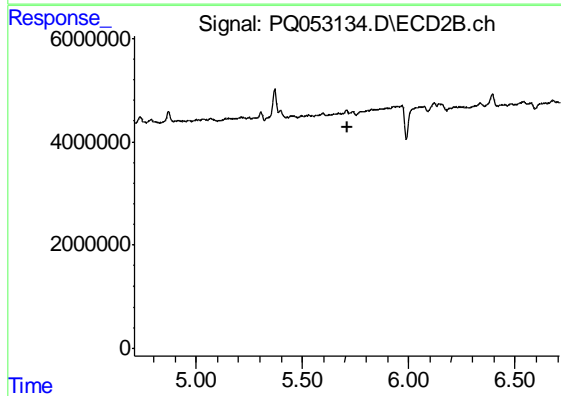
R.T.: 9.580 min
Delta R.T.: 0.001 min
Response: 415454434
Conc: 33.38 ng/ml



#5 AR-1016-3

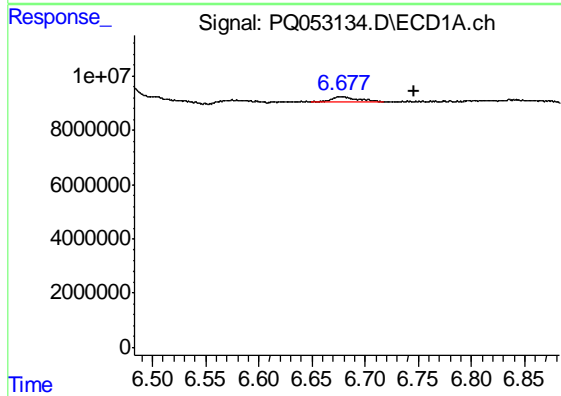
R.T.: 6.678 min
 Delta R.T.: 0.040 min
 Response: 3588159
 Conc: 4.08 ng/ml

Instrument :
 ECD_Q
 ClientSampleId :
 A0AA8



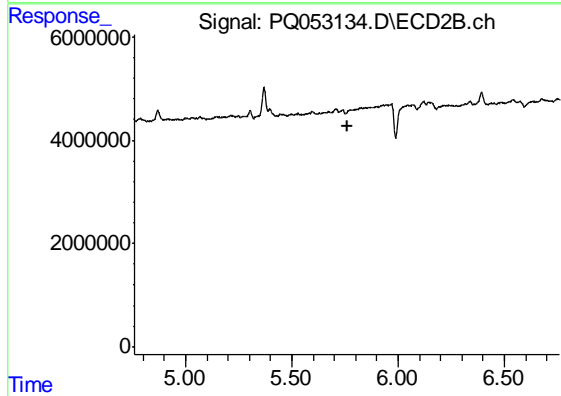
#5 AR-1016-3

R.T.: 0.000 min
 Exp R.T. : 5.709 min
 Response: 0
 Conc: N.D.



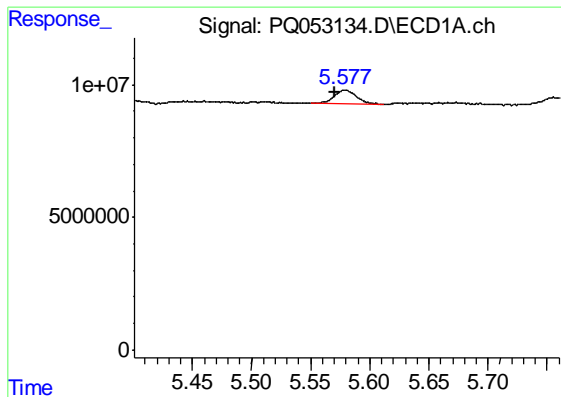
#6 AR-1016-4

R.T.: 6.678 min
 Delta R.T.: -0.069 min
 Response: 3588159
 Conc: 4.95 ng/ml



#6 AR-1016-4

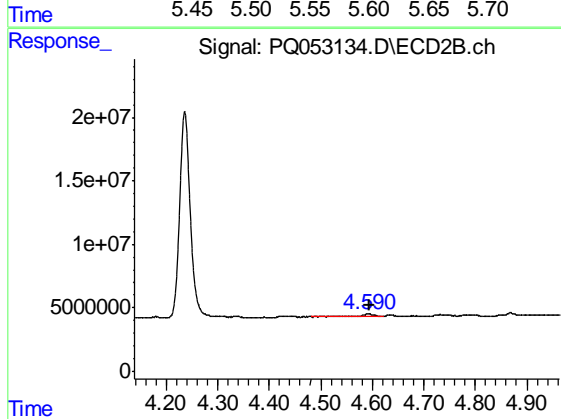
R.T.: 0.000 min
 Exp R.T. : 5.759 min
 Response: 0
 Conc: N.D.



#9 AR-1221-2

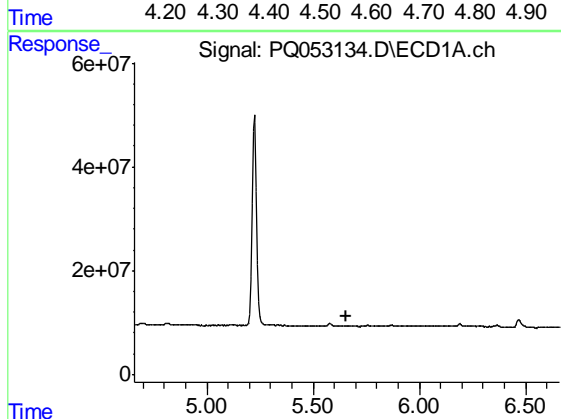
R.T.: 5.580 min
 Delta R.T.: 0.010 min
 Response: 6954049
 Conc: 33.70 ng/ml

Instrument :
 ECD_Q
 ClientSampled :
 A0AA8



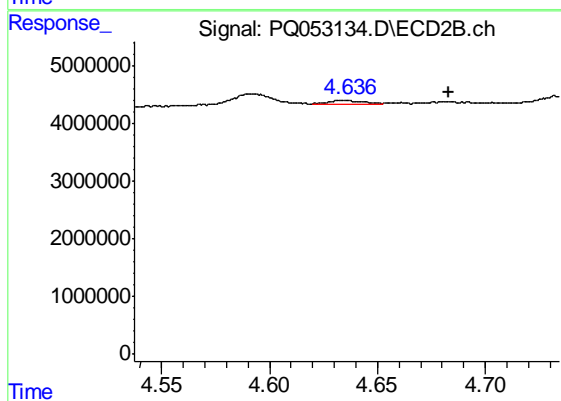
#9 AR-1221-2

R.T.: 4.592 min
 Delta R.T.: -0.003 min
 Response: 2465132
 Conc: 27.74 ng/ml



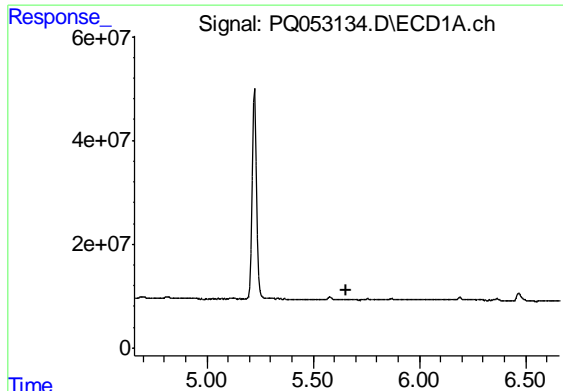
#10 AR-1221-3

R.T.: 0.000 min
 Exp R.T. : 5.659 min
 Response: 0
 Conc: N.D.



#10 AR-1221-3

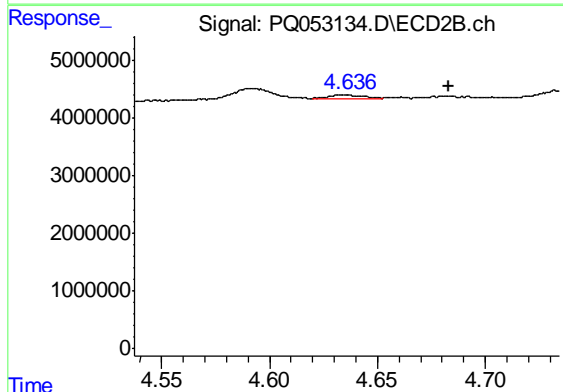
R.T.: 4.635 min
 Delta R.T.: -0.048 min
 Response: 696693
 Conc: 2.26 ng/ml



#11 AR-1232-1

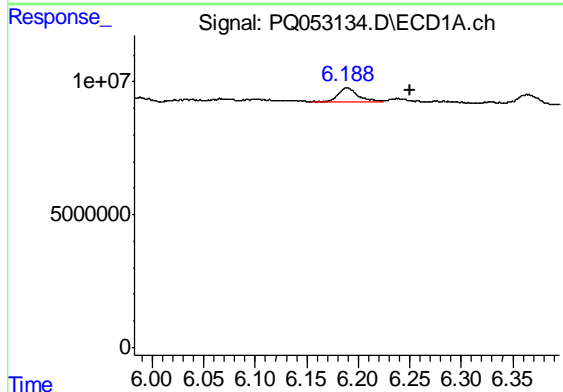
R.T.: 0.000 min
 Exp R.T. : 5.659 min
 Response: 0
 Conc: N.D.

Instrument :
 ECD_Q
 ClientSampleId :
 A0AA8



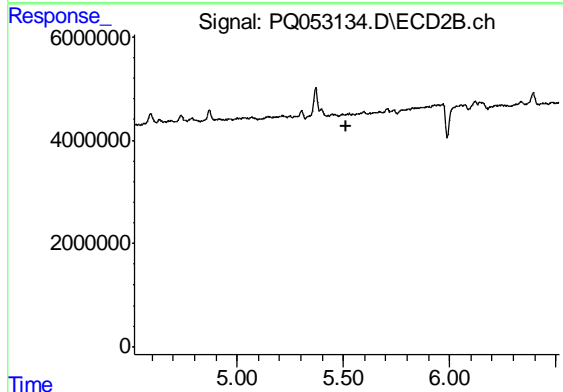
#11 AR-1232-1

R.T.: 4.635 min
 Delta R.T.: -0.048 min
 Response: 696693
 Conc: 3.05 ng/ml



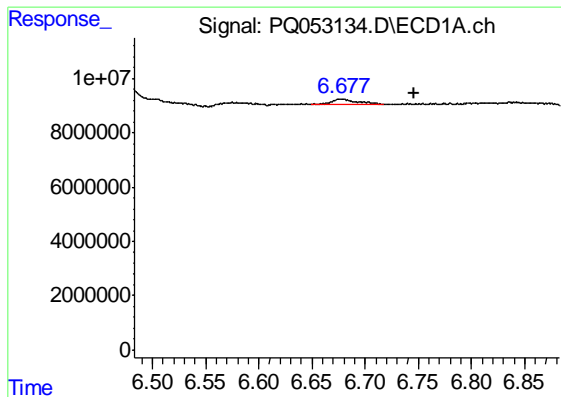
#12 AR-1232-2

R.T.: 6.189 min
 Delta R.T.: -0.062 min
 Response: 6463997
 Conc: 23.08 ng/ml



#12 AR-1232-2

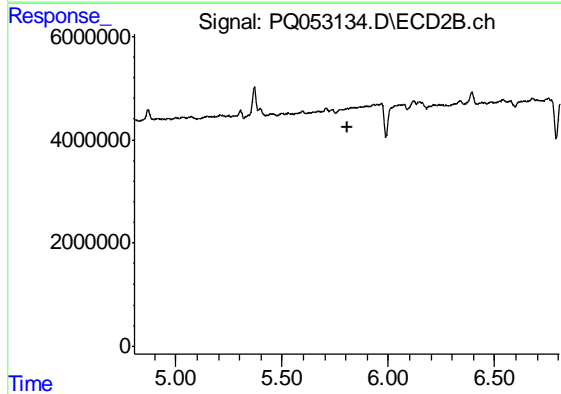
R.T.: 0.000 min
 Exp R.T. : 5.517 min
 Response: 0
 Conc: N.D.



#14 AR-1232-4

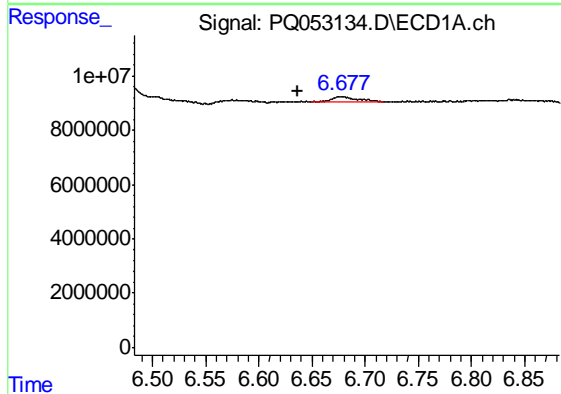
R.T.: 6.678 min
 Delta R.T.: -0.068 min
 Response: 3588159
 Conc: 12.55 ng/ml

Instrument :
 ECD_Q
 ClientSampleId :
 A0AA8



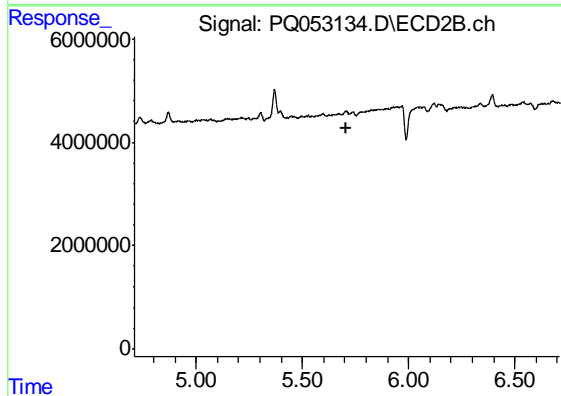
#14 AR-1232-4

R.T.: 0.000 min
 Exp R.T. : 5.805 min
 Response: 0
 Conc: N.D.



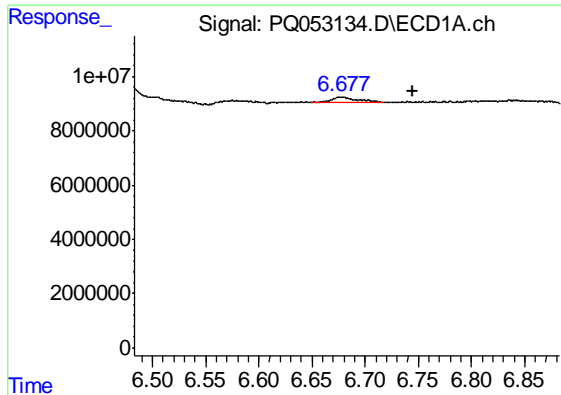
#18 AR-1242-3

R.T.: 6.678 min
 Delta R.T.: 0.041 min
 Response: 3588159
 Conc: 4.35 ng/ml



#18 AR-1242-3

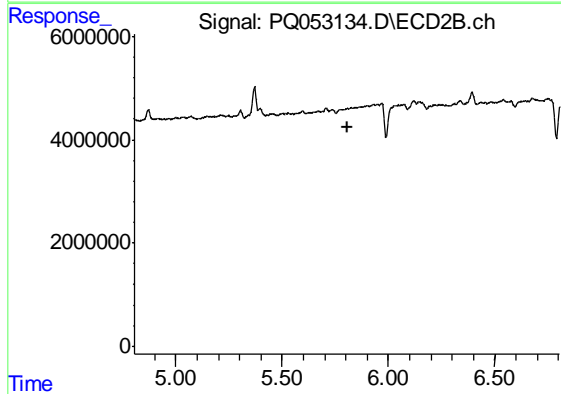
R.T.: 0.000 min
 Exp R.T. : 5.710 min
 Response: 0
 Conc: N.D.



#19 AR-1242-4

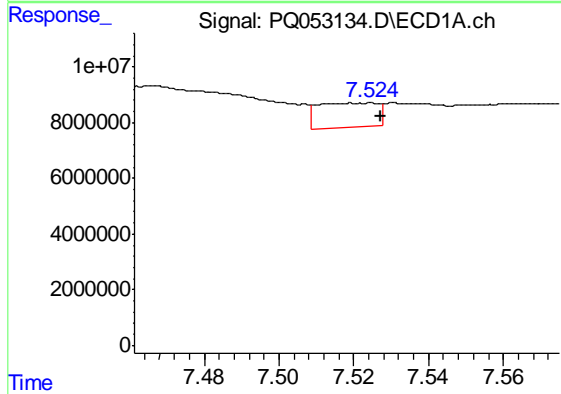
R.T.: 6.678 min
 Delta R.T.: -0.067 min
 Response: 3588159
 Conc: 5.24 ng/ml

Instrument :
 ECD_Q
 ClientSampleId :
 A0AA8



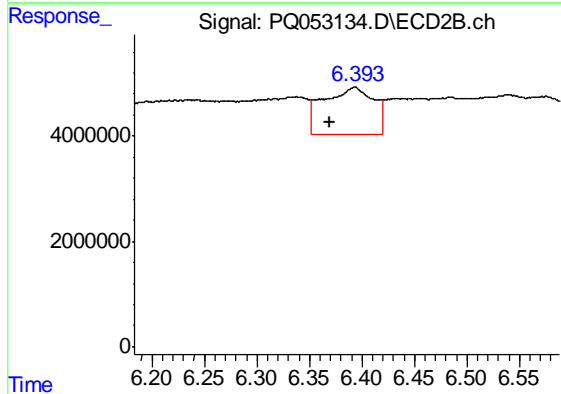
#19 AR-1242-4

R.T.: 0.000 min
 Exp R.T. : 5.805 min
 Response: 0
 Conc: N.D.



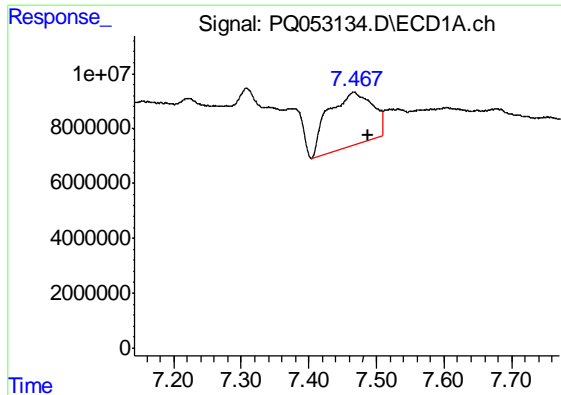
#20 AR-1242-5

R.T.: 7.525 min
 Delta R.T.: -0.003 min
 Response: 9682389
 Conc: 13.27 ng/ml



#20 AR-1242-5

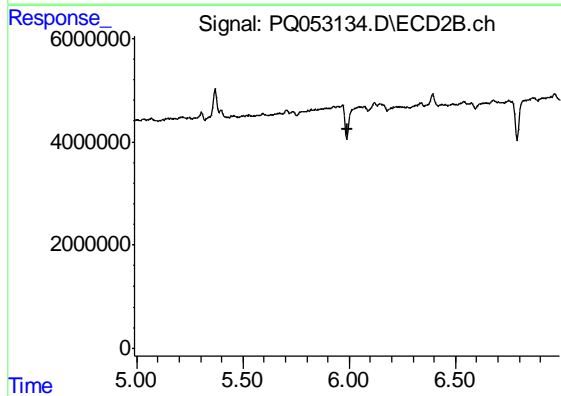
R.T.: 6.393 min
 Delta R.T.: 0.025 min
 Response: 29476654
 Conc: 74.40 ng/ml



#24 AR-1248-4

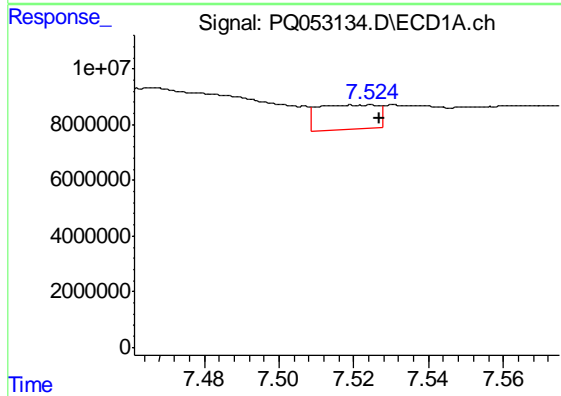
R.T.: 7.467 min
 Delta R.T.: -0.020 min
 Response: 87692146
 Conc: 76.74 ng/ml

Instrument :
 ECD_Q
 ClientSampleId :
 A0AA8



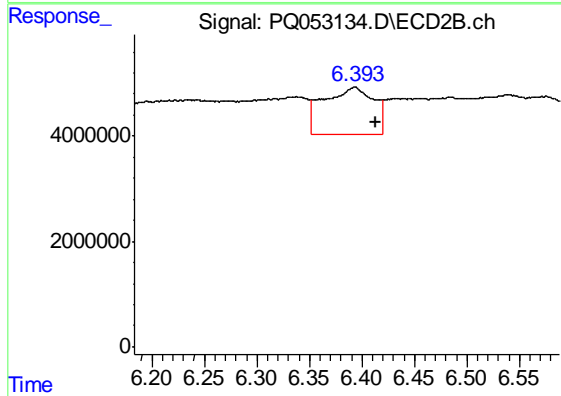
#24 AR-1248-4

R.T.: 0.000 min
 Exp R.T. : 5.990 min
 Response: 0
 Conc: N.D.



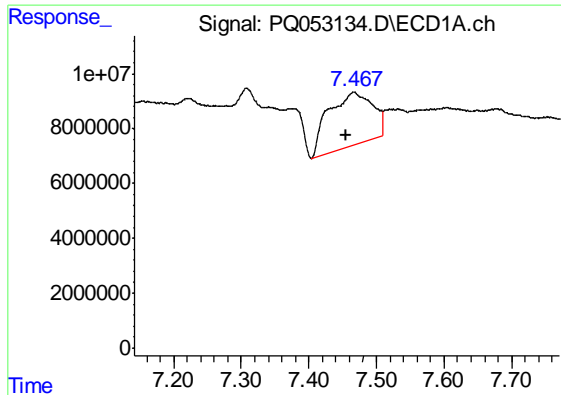
#25 AR-1248-5

R.T.: 7.525 min
 Delta R.T.: -0.002 min
 Response: 9682389
 Conc: 8.50 ng/ml



#25 AR-1248-5

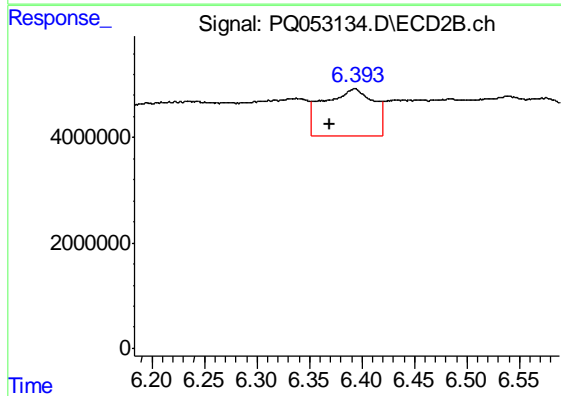
R.T.: 6.393 min
 Delta R.T.: -0.019 min
 Response: 29476654
 Conc: 59.90 ng/ml



#26 AR-1254-1

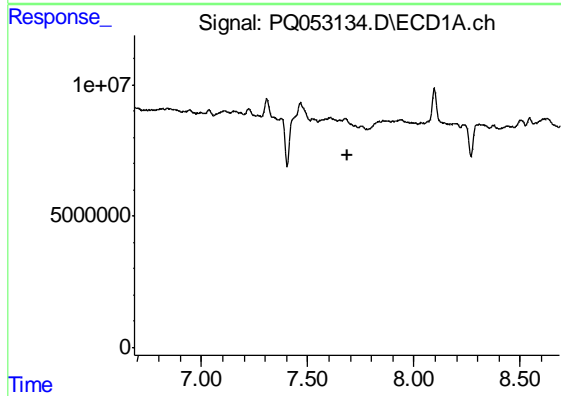
R.T.: 7.467 min
 Delta R.T.: 0.011 min
 Response: 87692146
 Conc: 55.78 ng/ml

Instrument :
 ECD_Q
 ClientSampled :
 A0AA8



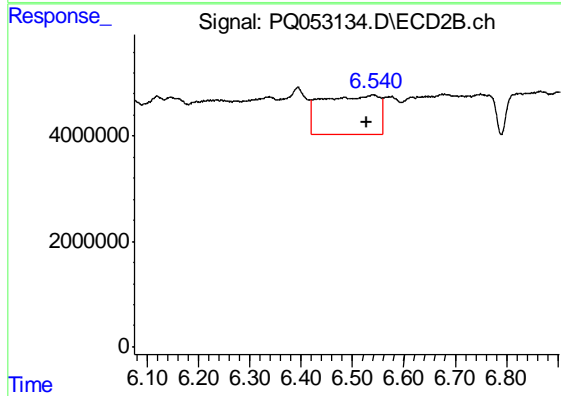
#26 AR-1254-1

R.T.: 6.393 min
 Delta R.T.: 0.025 min
 Response: 29476654
 Conc: 27.49 ng/ml



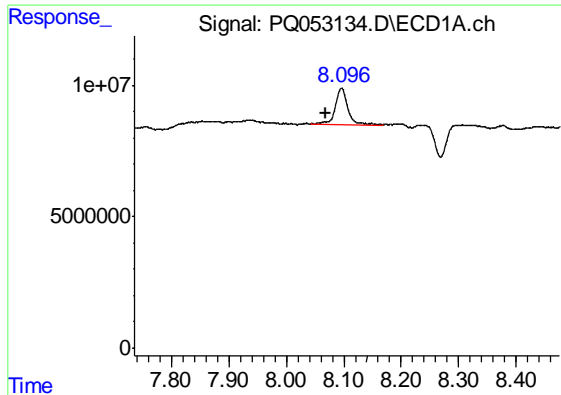
#27 AR-1254-2

R.T.: 0.000 min
 Exp R.T. : 7.685 min
 Response: 0
 Conc: N.D.



#27 AR-1254-2

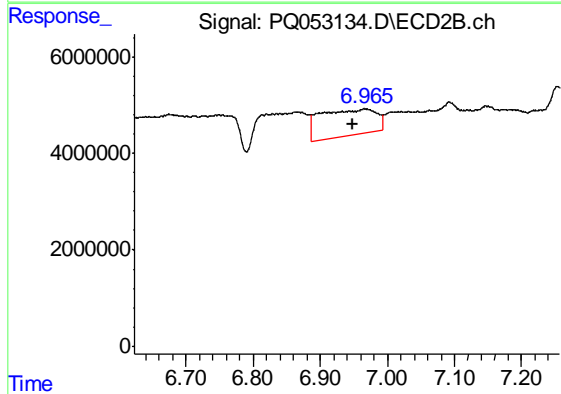
R.T.: 6.540 min
 Delta R.T.: 0.013 min
 Response: 57445282
 Conc: 60.23 ng/ml



#28 AR-1254-3

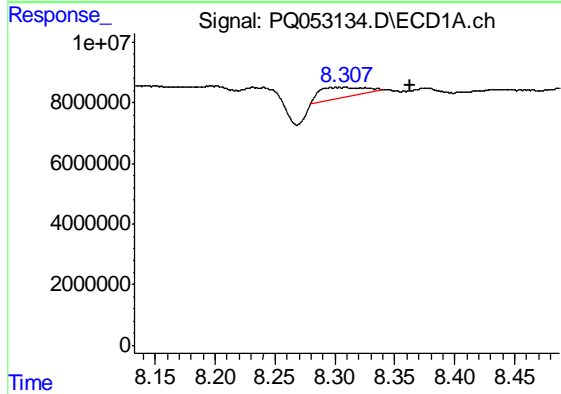
R.T.: 8.096 min
 Delta R.T.: 0.028 min
 Response: 20610134
 Conc: 7.83 ng/ml

Instrument :
 ECD_Q
 ClientSampled :
 A0AA8



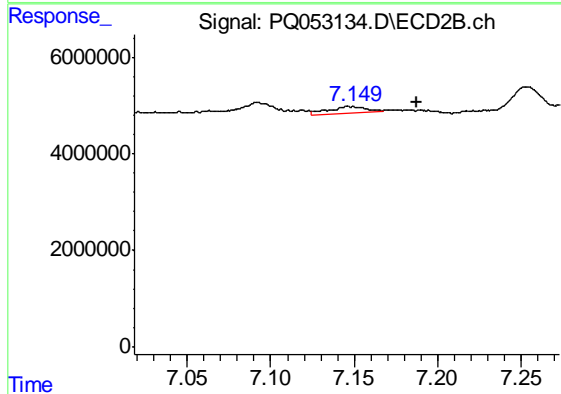
#28 AR-1254-3

R.T.: 6.967 min
 Delta R.T.: 0.018 min
 Response: 30761205
 Conc: 19.86 ng/ml



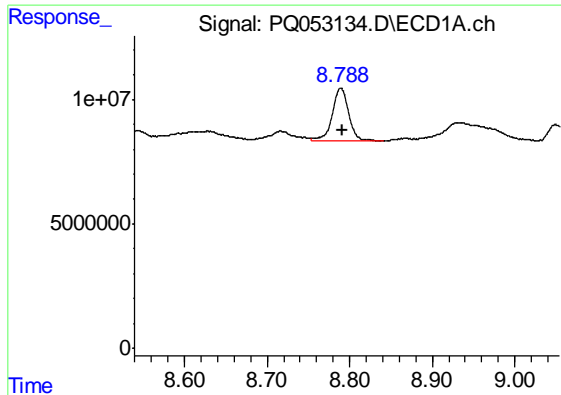
#29 AR-1254-4

R.T.: 8.309 min
 Delta R.T.: -0.054 min
 Response: 8628584
 Conc: 4.48 ng/ml



#29 AR-1254-4

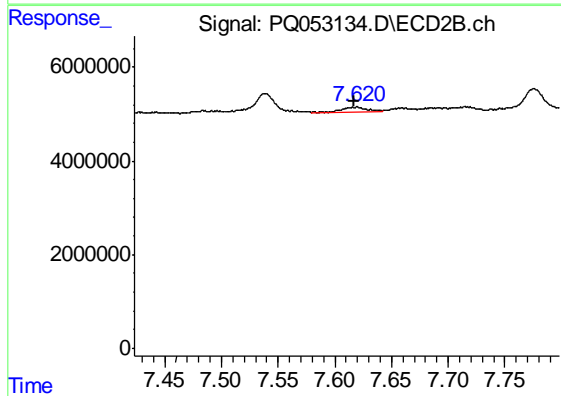
R.T.: 7.147 min
 Delta R.T.: -0.040 min
 Response: 2139577
 Conc: 2.04 ng/ml



#30 AR-1254-5

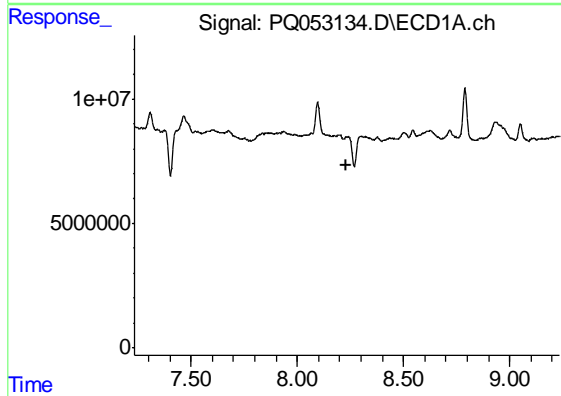
R.T.: 8.789 min
 Delta R.T.: -0.002 min
 Response: 30363467
 Conc: 14.84 ng/ml

Instrument :
 ECD_Q
 ClientSampleId :
 A0AA8



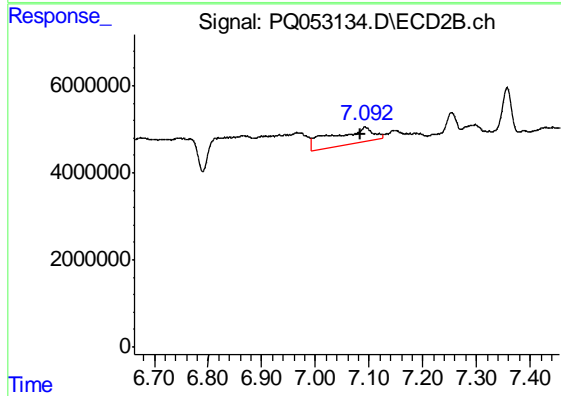
#30 AR-1254-5

R.T.: 7.620 min
 Delta R.T.: 0.003 min
 Response: 2130680
 Conc: 1.46 ng/ml



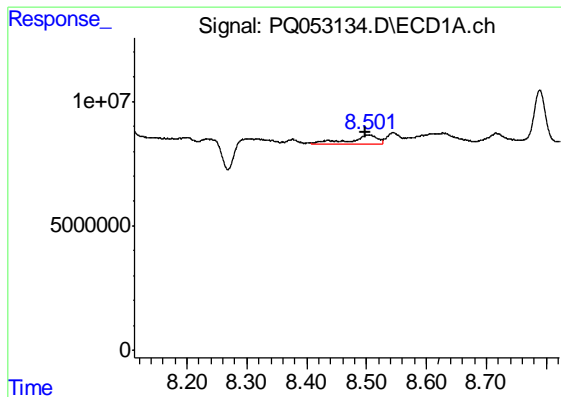
#31 AR-1260-1

R.T.: 0.000 min
 Exp R.T. : 8.234 min
 Response: 0
 Conc: N.D.



#31 AR-1260-1

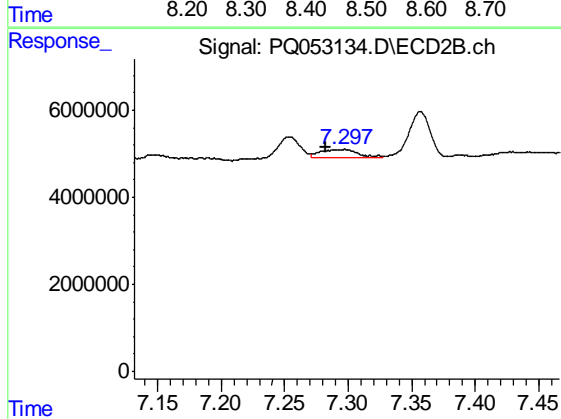
R.T.: 7.092 min
 Delta R.T.: 0.008 min
 Response: 19686596
 Conc: 30.38 ng/ml



#32 AR-1260-2

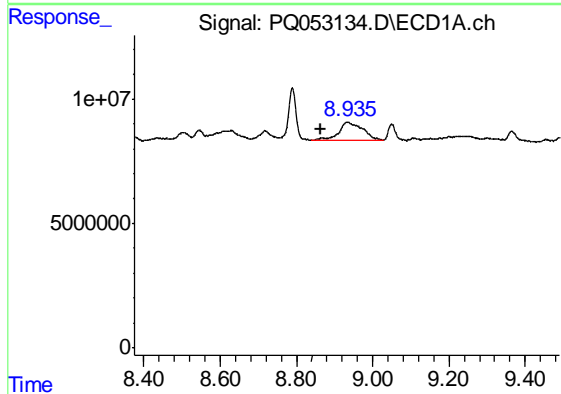
R.T.: 8.502 min
 Delta R.T.: 0.004 min
 Response: 10261900
 Conc: 7.37 ng/ml

Instrument :
 ECD_Q
 ClientSampleId :
 A0AA8



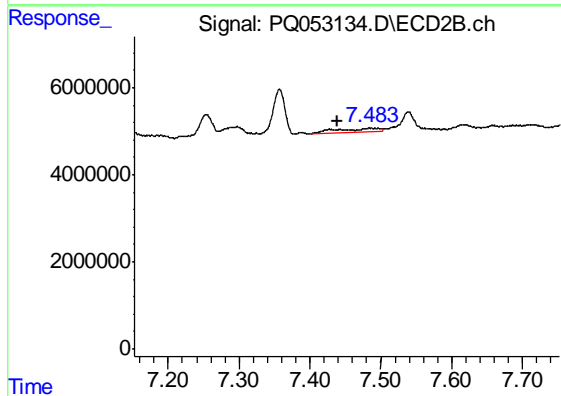
#32 AR-1260-2

R.T.: 7.297 min
 Delta R.T.: 0.015 min
 Response: 3897155
 Conc: 4.20 ng/ml



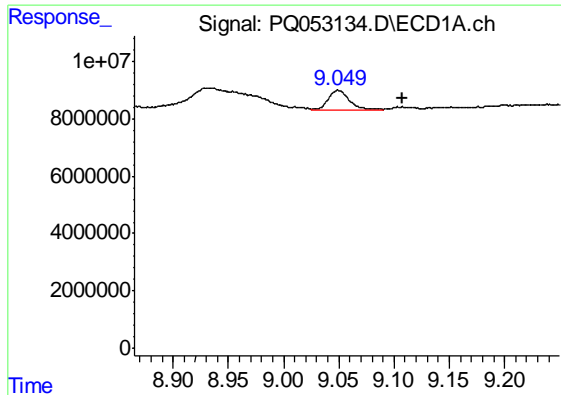
#33 AR-1260-3

R.T.: 8.933 min
 Delta R.T.: 0.068 min
 Response: 34275690
 Conc: 32.01 ng/ml



#33 AR-1260-3

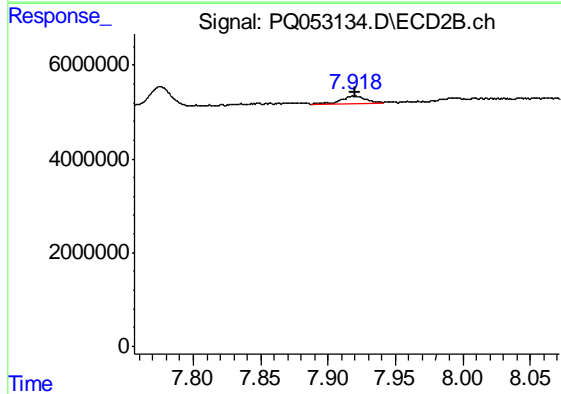
R.T.: 7.484 min
 Delta R.T.: 0.046 min
 Response: 3892834
 Conc: 5.00 ng/ml



#34 AR-1260-4

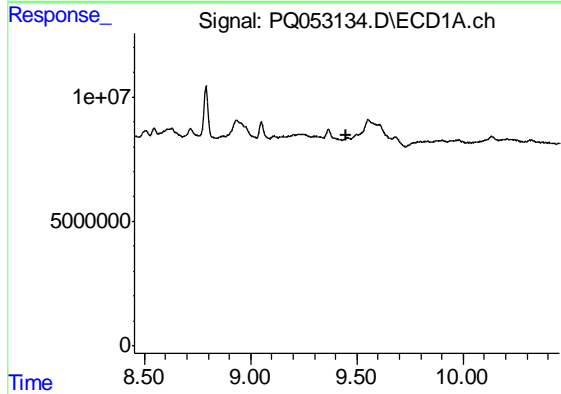
R.T.: 9.049 min
 Delta R.T.: -0.059 min
 Response: 8836224
 Conc: 7.30 ng/ml

Instrument :
 ECD_Q
 ClientSampleId :
 A0AA8



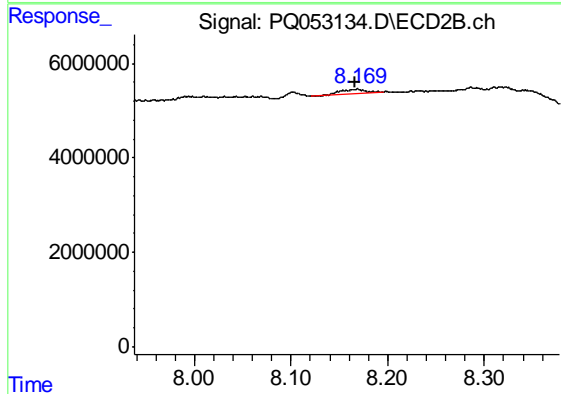
#34 AR-1260-4

R.T.: 7.919 min
 Delta R.T.: -0.002 min
 Response: 1985947
 Conc: 2.93 ng/ml



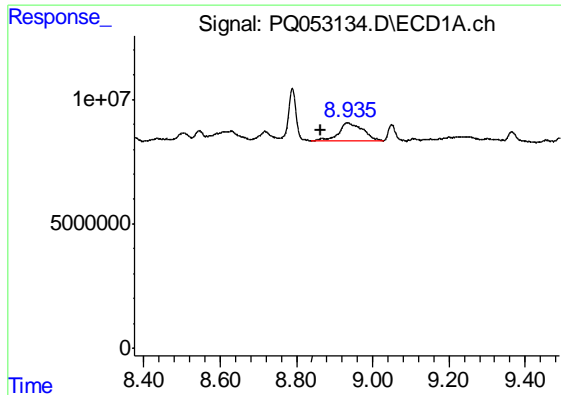
#35 AR-1260-5

R.T.: 0.000 min
 Exp R.T. : 9.453 min
 Response: 0
 Conc: N.D.



#35 AR-1260-5

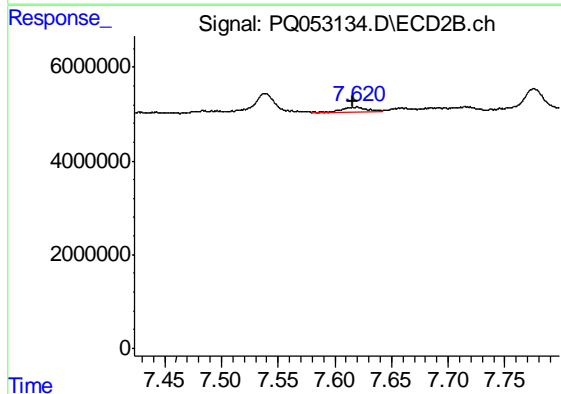
R.T.: 8.168 min
 Delta R.T.: 0.001 min
 Response: 1994709
 Conc: 1.08 ng/ml



#36 AR-1262-1

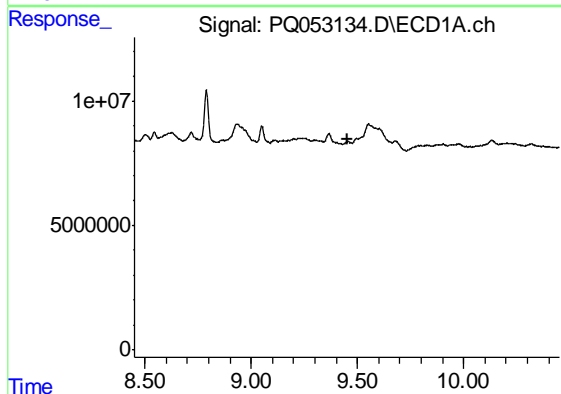
R.T.: 8.933 min
 Delta R.T.: 0.069 min
 Response: 34275690
 Conc: 17.14 ng/ml

Instrument :
 ECD_Q
 ClientSampleId :
 A0AA8



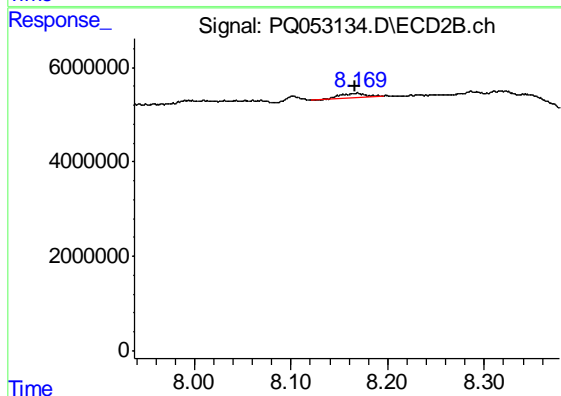
#36 AR-1262-1

R.T.: 7.620 min
 Delta R.T.: 0.004 min
 Response: 2130680
 Conc: 3.48 ng/ml



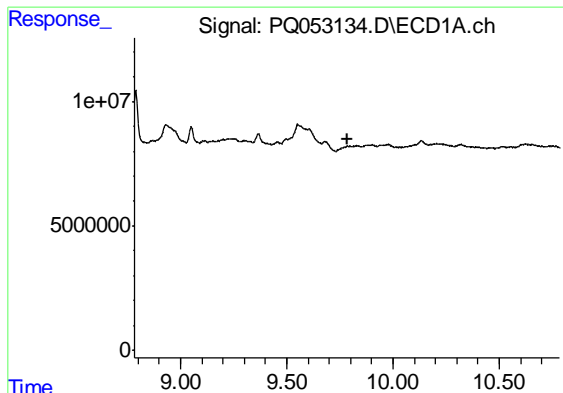
#37 AR-1262-2

R.T.: 0.000 min
 Exp R.T. : 9.451 min
 Response: 0
 Conc: N.D.



#37 AR-1262-2

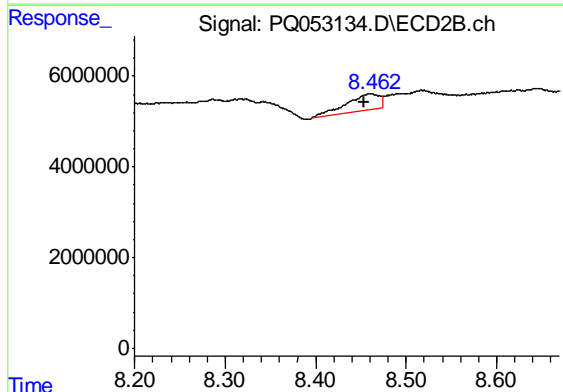
R.T.: 8.168 min
 Delta R.T.: 0.002 min
 Response: 1994709
 Conc: 0.78 ng/ml



#38 AR-1262-3

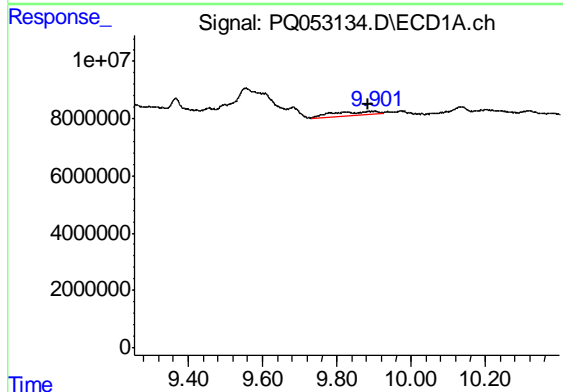
R.T.: 0.000 min
 Exp R.T. : 9.783 min
 Response: 0
 Conc: N.D.

Instrument :
 ECD_Q
 ClientSampleId :
 A0AA8



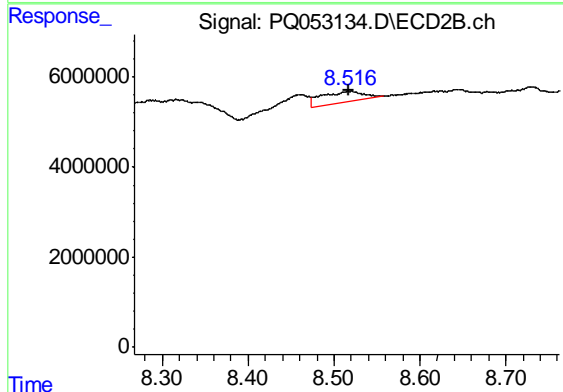
#38 AR-1262-3

R.T.: 8.461 min
 Delta R.T.: 0.007 min
 Response: 9267004
 Conc: 9.12 ng/ml



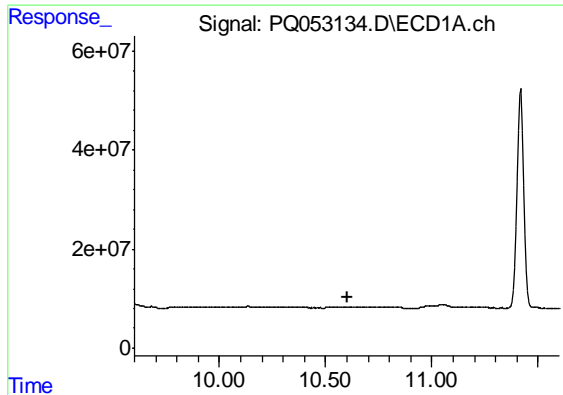
#39 AR-1262-4

R.T.: 9.893 min
 Delta R.T.: 0.009 min
 Response: 10081179
 Conc: 5.04 ng/ml



#39 AR-1262-4

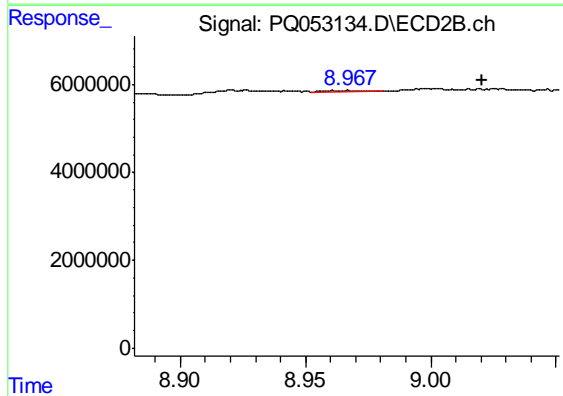
R.T.: 8.517 min
 Delta R.T.: -0.001 min
 Response: 8764424
 Conc: 5.09 ng/ml



#40 AR-1262-5

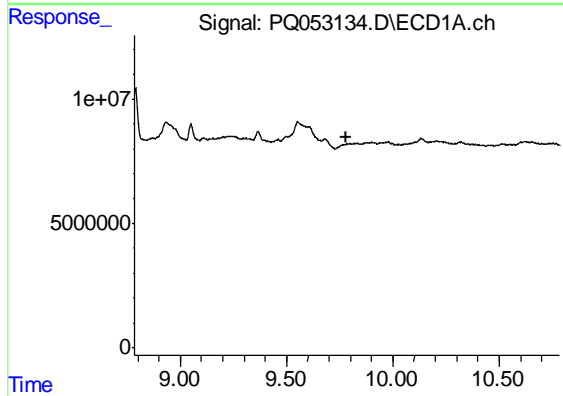
R.T.: 0.000 min
 Exp R.T. : 10.600 min
 Response: 0
 Conc: N.D.

Instrument :
 ECD_Q
 ClientSampleId :
 A0AA8



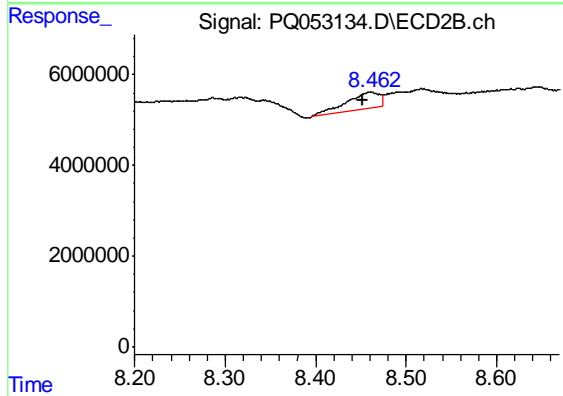
#40 AR-1262-5

R.T.: 8.966 min
 Delta R.T.: -0.054 min
 Response: 408297
 Conc: 0.52 ng/ml



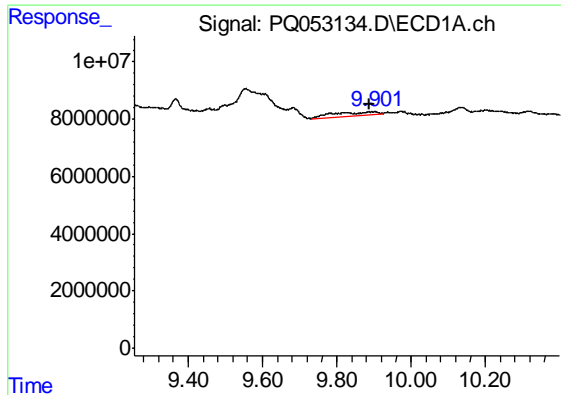
#41 AR-1268-1

R.T.: 0.000 min
 Exp R.T. : 9.784 min
 Response: 0
 Conc: N.D.



#41 AR-1268-1

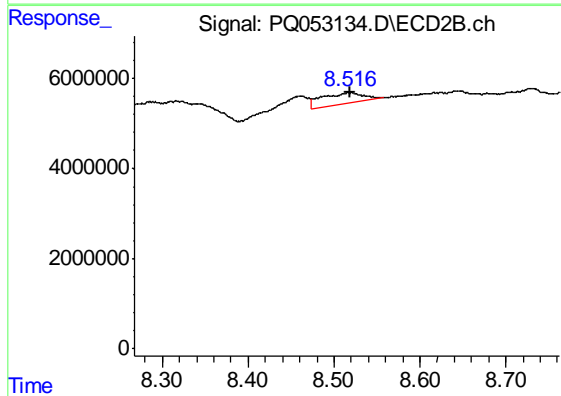
R.T.: 8.461 min
 Delta R.T.: 0.008 min
 Response: 9267004
 Conc: 3.16 ng/ml



#42 AR-1268-2

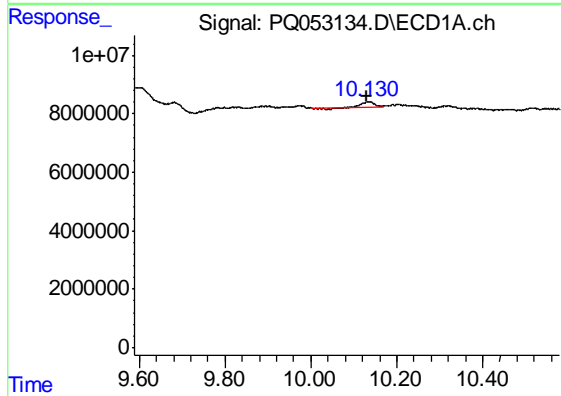
R.T.: 9.893 min
 Delta R.T.: 0.007 min
 Response: 10081179
 Conc: 2.35 ng/ml

Instrument :
 ECD_Q
 ClientSampleId :
 A0AA8



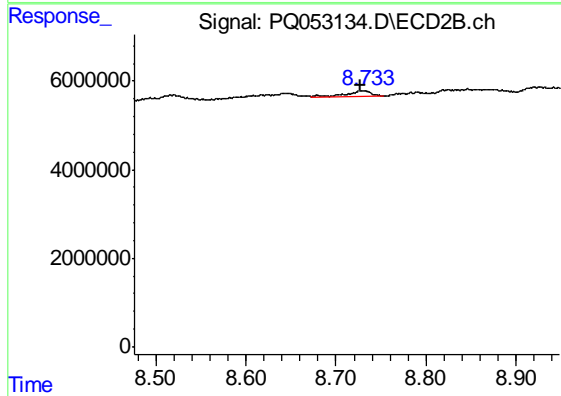
#42 AR-1268-2

R.T.: 8.517 min
 Delta R.T.: -0.002 min
 Response: 8764424
 Conc: 3.52 ng/ml



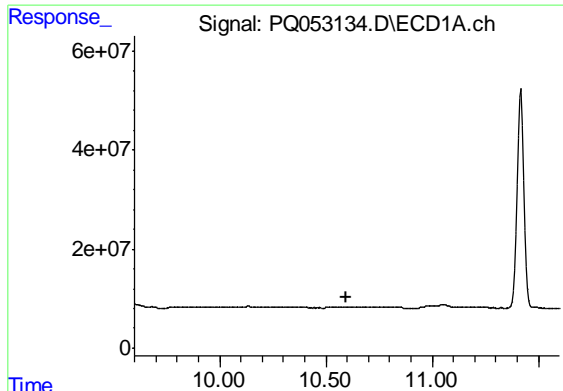
#43 AR-1268-3

R.T.: 10.131 min
 Delta R.T.: 0.002 min
 Response: 2597415
 Conc: 0.68 ng/ml



#43 AR-1268-3

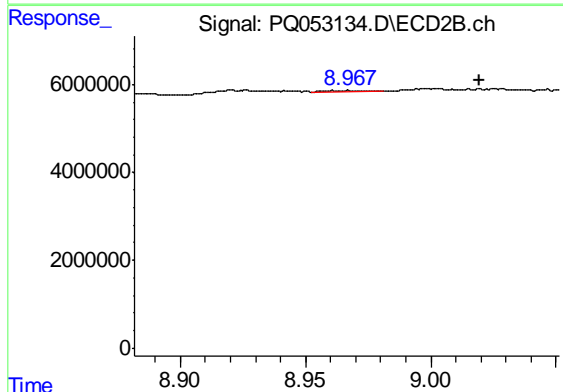
R.T.: 8.728 min
 Delta R.T.: 0.002 min
 Response: 2572981
 Conc: 1.19 ng/ml



#44 AR-1268-4

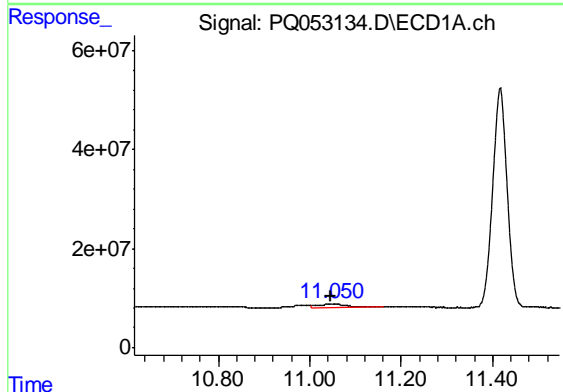
R.T.: 0.000 min
 Exp R.T. : 10.599 min
 Response: 0
 Conc: N.D.

Instrument :
 ECD_Q
 ClientSampleId :
 A0AA8



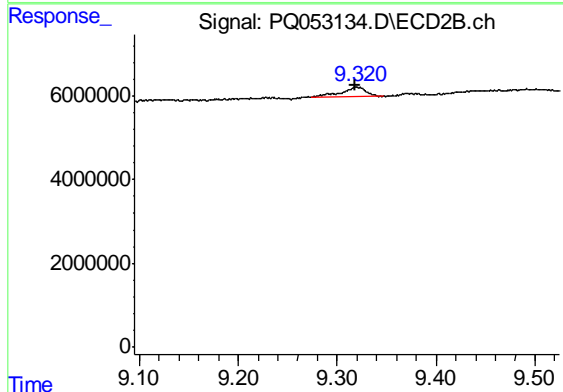
#44 AR-1268-4

R.T.: 8.966 min
 Delta R.T.: -0.053 min
 Response: 408297
 Conc: 0.48 ng/ml



#45 AR-1268-5

R.T.: 11.051 min
 Delta R.T.: 0.004 min
 Response: 31514986
 Conc: 2.45 ng/ml



#45 AR-1268-5

R.T.: 9.320 min
 Delta R.T.: 0.002 min
 Response: 3964382
 Conc: 0.64 ng/ml