

Data Path : Z:\pestpcbsrv\HPCHEM1\ECD_Q\Data\PQ042221\
 Data File : PQ053142.D
 Signal(s) : Signal #1: ECD1A.ch Signal #2: ECD2B.ch
 Acq On : 22 Apr 2021 14:53
 Operator : DD\AJ
 Sample : AR1248CCC400
 Misc :
 ALS Vial : 142 Sample Multiplier: 1

Instrument :
 ECD_Q
ClientSampleId :
 AR12483007

Integration File signal 1: autoint1.e
 Integration File signal 2: autoint2.e
 Quant Time: Apr 22 22:10:18 2021
 Quant Method : Z:\pestpcbsrv\HPCHEM1\ECD_Q\Method\PQ042021CLP.M
 Quant Title : GC EXTRACTABLES
 QLast Update : Wed Apr 21 07:47:07 2021
 Response via : Initial Calibration
 Integrator: ChemStation

Volume Inj. : 1 µl
 Signal #1 Phase : ZB MR1 Signal #2 Phase: ZB MR2
 Signal #1 Info : 30Mx0.32mmx 0.5µm Signal #2 Info : 30M x 0.32mm x 0.25µm

Compound	RT#1	RT#2	Resp#1	Resp#2	ng/ml	ng/ml

System Monitoring Compounds						
1) SA Tetrachlo...	5.221	4.236	550.3E6	223.4E6	19.613	19.215
2) SA Decachlor...	11.413	9.580	1147.8E6	504.3E6	40.585	40.521
Target Compounds						
3) L1 AR-1016-1	6.546	5.496	236.3E6	102.3E6	242.517	232.371
4) L1 AR-1016-2	6.570	5.516	280.8E6	106.4E6	193.110	168.183
5) L1 AR-1016-3	6.637	5.710	134.6E6	67208977	153.047	203.804 #
6) L1 AR-1016-4	6.744	5.759	153.0E6	138.3E6	211.190	530.688 #
7) L1 AR-1016-5	7.059	5.989	371.7E6	173.6E6	538.086	522.420
9) L2 AR-1221-2	5.575	4.592	9938936	3773970	48.168	42.473
10) L2 AR-1221-3	5.658	4.682	18129373	7520205	26.117	24.352
11) L3 AR-1232-1	5.658	4.682	18129373	7520205	34.910	32.944
12) L3 AR-1232-2	6.251	5.516	95454699	106.4E6	340.893	435.523 #
13) L3 AR-1232-3	6.570	5.710	280.8E6	67208977	489.776	549.536
14) L3 AR-1232-4	6.744	5.804	153.0E6	142.4E6	534.899	1360.335 #
15) L3 AR-1232-5	6.839	5.989	324.8E6	173.6E6	1591.539	1480.190
16) L4 AR-1242-1	6.546	5.496	236.3E6	102.3E6	260.577	255.313
17) L4 AR-1242-2	6.570	5.516	280.8E6	106.4E6	206.755	182.428
18) L4 AR-1242-3	6.637	5.710	134.6E6	67208977	163.047	221.855 #
19) L4 AR-1242-4	6.744	5.804	153.0E6	142.4E6	223.303	500.712 #
20) L4 AR-1242-5	7.527	6.369	434.1E6	267.7E6	595.009	675.808
21) L5 AR-1248-1	6.546	5.496	236.3E6	102.3E6	381.858	375.725
22) L5 AR-1248-2	6.839	5.759	324.8E6	138.3E6	372.370	372.034
23) L5 AR-1248-3	7.059	5.804	371.7E6	142.4E6	379.147	373.045
24) L5 AR-1248-4	7.487	5.989	434.3E6	173.6E6	380.064	371.380
25) L5 AR-1248-5	7.527	6.413	434.1E6	185.6E6	380.883	377.138
26) L6 AR-1254-1	7.456	6.369	329.7E6	267.7E6	209.727	249.700
27) L6 AR-1254-2	7.692	6.528	423.8E6	75330454	173.119	78.976 #
28) L6 AR-1254-3	8.068	6.949	224.2E6	117.8E6	85.188	76.074
29) L6 AR-1254-4	8.364	7.188	157.3E6	96447768	81.718	92.111
30) L6 AR-1254-5	8.792	7.617	36521789	25970362	17.853	17.798
31) L7 AR-1260-1	8.235	7.098	23536091	57516481	20.443	88.756 #
32) L7 AR-1260-2	8.493	7.281	35405303	13302611	25.411	14.351 #
33) L7 AR-1260-3	8.855	7.436	6115167	12870791	5.711	16.541 #
34) L7 AR-1260-4	9.101	7.922	15615418	1853461	12.896	2.730 #
35) L7 AR-1260-5	9.453	8.166	7201860	4049623	2.815	2.189
36) L8 AR-1262-1	8.855	7.617	6115167	25970362	3.057	42.366 #
37) L8 AR-1262-2	9.453	8.166	7201860	4049623	1.941	1.594
38) L8 AR-1262-3	9.814	8.454	6223303	772729	2.480	0.761 #
39) L8 AR-1262-4	9.814f	8.519	6223303	4014157	3.114	2.330 #
41) L9 AR-1268-1	9.814	8.454	6223303	772729	1.399	0.264 #
42) L9 AR-1268-2	0.000	8.519	0	4014157	N.D.	1.612 #
43) L9 AR-1268-3	0.000	8.728	0	4072683	N.D.	1.879 #
45) L9 AR-1268-5	11.050	9.320	9375092	3385806	0.728	0.546

Data Path : Z:\pestpcbsrv\HPCHEM1\ECD_Q\Data\PQ042221\
Data File : PQ053142.D
Signal(s) : Signal #1: ECD1A.ch Signal #2: ECD2B.ch
Acq On : 22 Apr 2021 14:53
Operator : DD\AJ
Sample : AR1248CCC400
Misc :
ALS Vial : 142 Sample Multiplier: 1

Instrument :
ECD_Q
ClientSampleId :
AR12483007

Integration File signal 1: autoint1.e
Integration File signal 2: autoint2.e
Quant Time: Apr 22 22:10:18 2021
Quant Method : Z:\pestpcbsrv\HPCHEM1\ECD_Q\Method\PQ042021CLP.M
Quant Title : GC EXTRACTABLES
QLast Update : Wed Apr 21 07:47:07 2021
Response via : Initial Calibration
Integrator: ChemStation

Volume Inj. : 1 µl
Signal #1 Phase : ZB MR1 Signal #2 Phase: ZB MR2
Signal #1 Info : 30Mx0.32mmx 0.5µm Signal #2 Info : 30M x 0.32mm x 0.25µm

Compound	RT#1	RT#2	Resp#1	Resp#2	ng/ml	ng/ml
----------	------	------	--------	--------	-------	-------

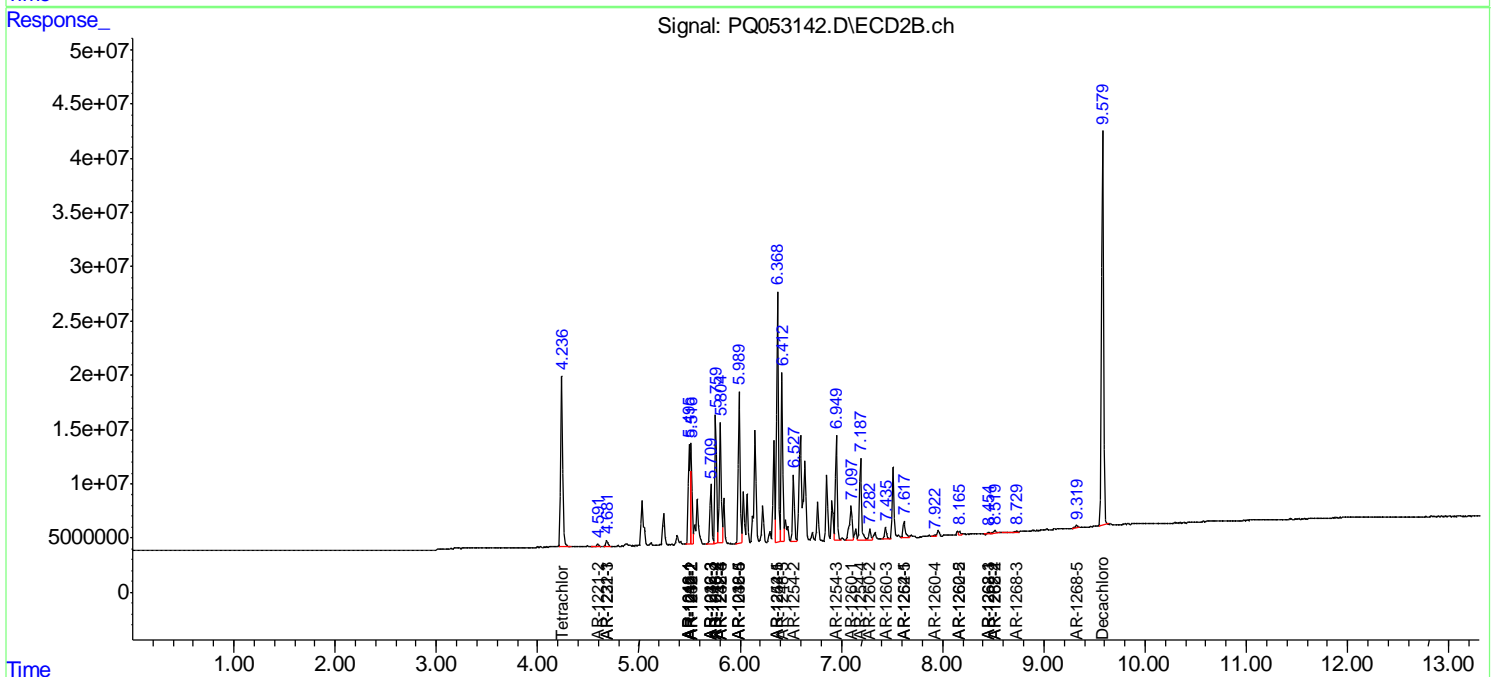
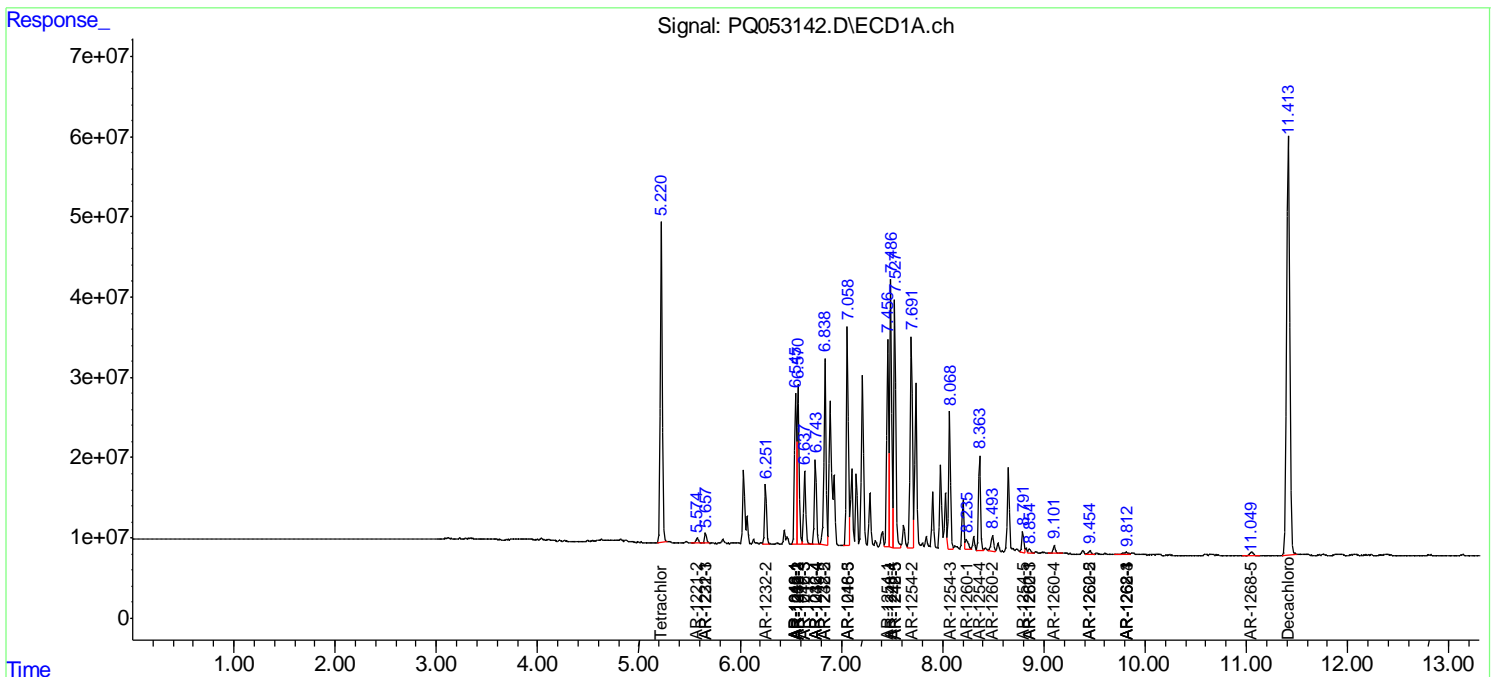
(f)=RT Delta > 1/2 Window (#)=Amounts differ by > 25% (m)=manual int.

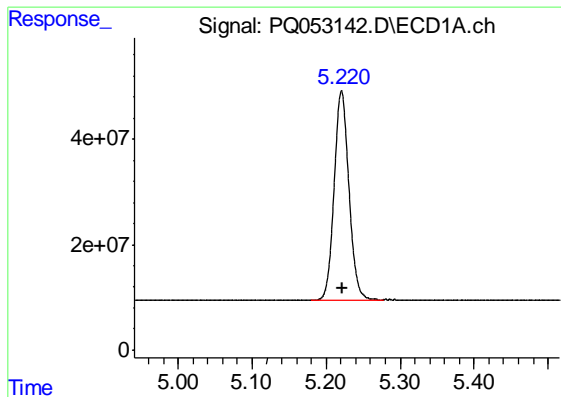
Data Path : Z:\pestpcbsrv\HPCHEM1\ECD_Q\Data\PQ042221\
 Data File : PQ053142.D
 Signal(s) : Signal #1: ECD1A.ch Signal #2: ECD2B.ch
 Acq On : 22 Apr 2021 14:53
 Operator : DD\AJ
 Sample : AR1248CCC400
 Misc :
 ALS Vial : 142 Sample Multiplier: 1

Instrument :
 ECD_Q
 ClientSampled :
 AR12483007

Integration File signal 1: autoint1.e
 Integration File signal 2: autoint2.e
 Quant Time: Apr 22 22:10:18 2021
 Quant Method : Z:\pestpcbsrv\HPCHEM1\ECD_Q\Method\PQ042021CLP.M
 Quant Title : GC EXTRACTABLES
 QLast Update : Wed Apr 21 07:47:07 2021
 Response via : Initial Calibration
 Integrator: ChemStation

Volume Inj. : 1 µl
 Signal #1 Phase : ZB MR1 Signal #2 Phase: ZB MR2
 Signal #1 Info : 30Mx0.32mmx 0.5µm Signal #2 Info : 30M x 0.32mm x 0.25µm

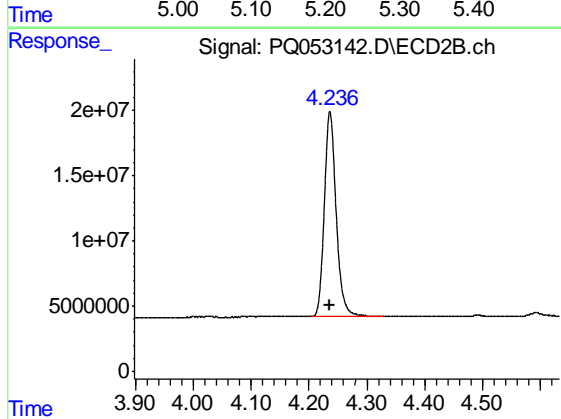




#1 Tetrachloro-m-xylene

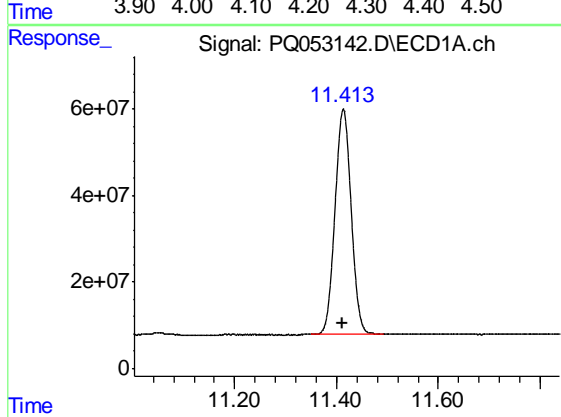
R.T.: 5.221 min
Delta R.T.: -0.001 min
Response: 550310350
Conc: 19.61 ng/ml

Instrument :
ECD_Q
ClientSampleId :
AR12483007



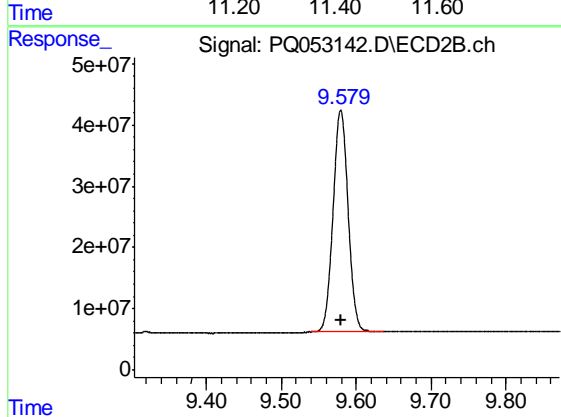
#1 Tetrachloro-m-xylene

R.T.: 4.236 min
Delta R.T.: 0.000 min
Response: 223443937
Conc: 19.22 ng/ml



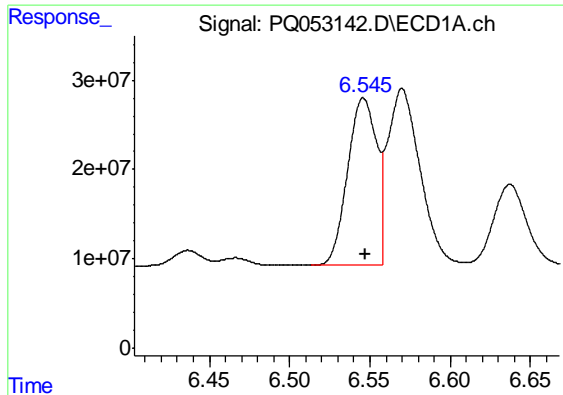
#2 Decachlorobiphenyl

R.T.: 11.413 min
Delta R.T.: 0.002 min
Response: 1147826998
Conc: 40.58 ng/ml



#2 Decachlorobiphenyl

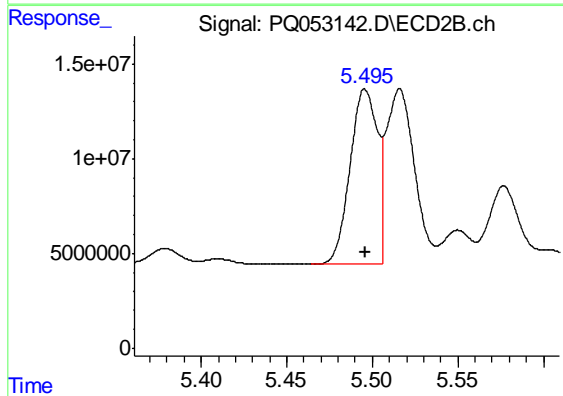
R.T.: 9.580 min
Delta R.T.: 0.000 min
Response: 504336489
Conc: 40.52 ng/ml



#3 AR-1016-1

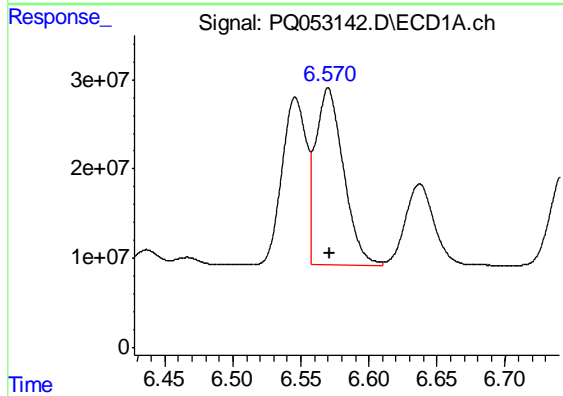
R.T.: 6.546 min
 Delta R.T.: -0.001 min
 Response: 236284687
 Conc: 242.52 ng/ml

Instrument :
 ECD_Q
 ClientSampleId :
 AR12483007



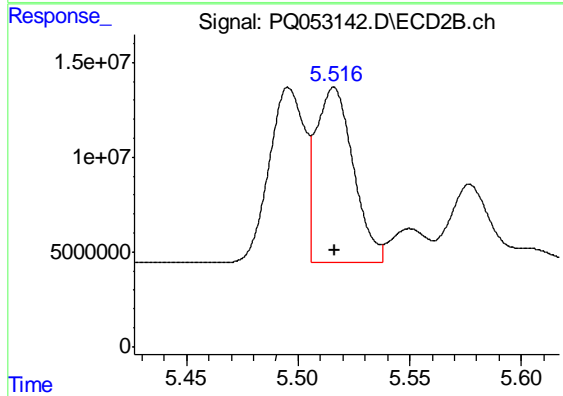
#3 AR-1016-1

R.T.: 5.496 min
 Delta R.T.: 0.000 min
 Response: 102337548
 Conc: 232.37 ng/ml



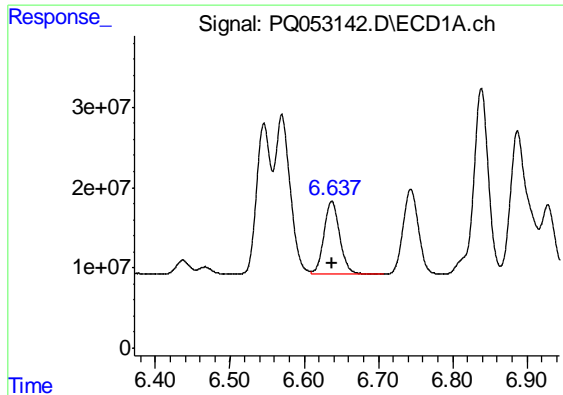
#4 AR-1016-2

R.T.: 6.570 min
 Delta R.T.: -0.001 min
 Response: 280800800
 Conc: 193.11 ng/ml



#4 AR-1016-2

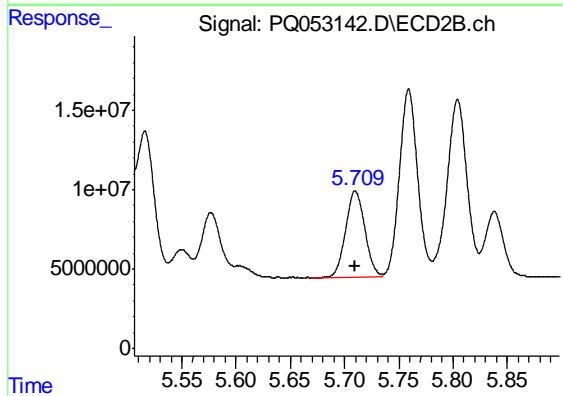
R.T.: 5.516 min
 Delta R.T.: 0.000 min
 Response: 106406196
 Conc: 168.18 ng/ml



#5 AR-1016-3

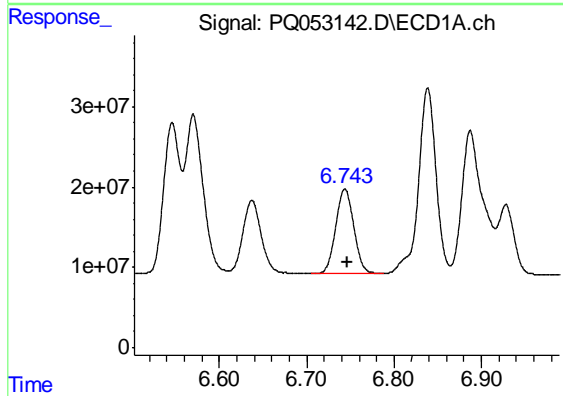
R.T.: 6.637 min
Delta R.T.: 0.000 min
Response: 134553364
Conc: 153.05 ng/ml

Instrument :
ECD_Q
ClientSampleId :
AR12483007



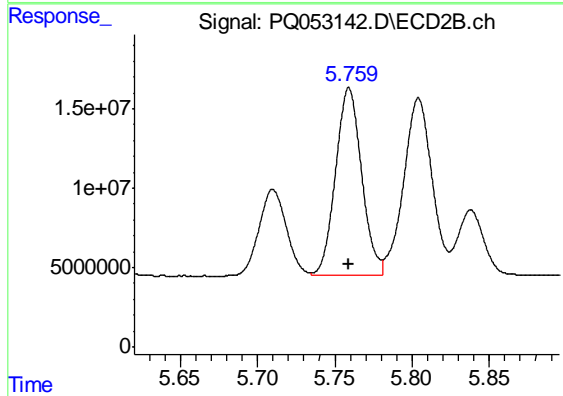
#5 AR-1016-3

R.T.: 5.710 min
Delta R.T.: 0.000 min
Response: 67208977
Conc: 203.80 ng/ml



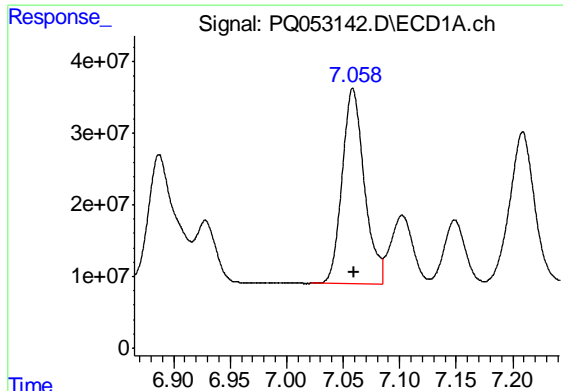
#6 AR-1016-4

R.T.: 6.744 min
Delta R.T.: -0.003 min
Response: 152986532
Conc: 211.19 ng/ml



#6 AR-1016-4

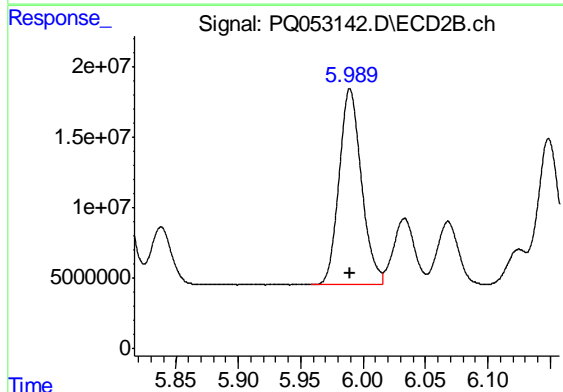
R.T.: 5.759 min
Delta R.T.: 0.000 min
Response: 138331490
Conc: 530.69 ng/ml



#7 AR-1016-5

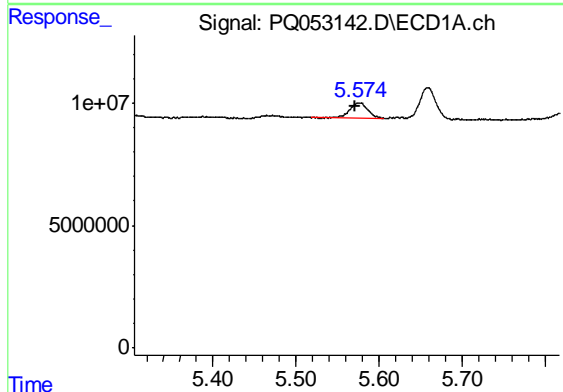
R.T.: 7.059 min
 Delta R.T.: -0.001 min
 Response: 371651534
 Conc: 538.09 ng/ml

Instrument :
 ECD_Q
 ClientSampleId :
 AR12483007



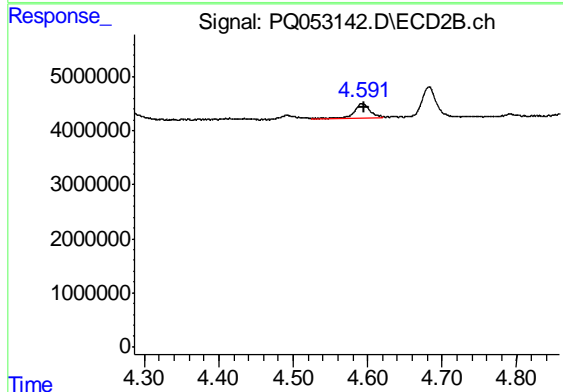
#7 AR-1016-5

R.T.: 5.989 min
 Delta R.T.: 0.000 min
 Response: 173616242
 Conc: 522.42 ng/ml



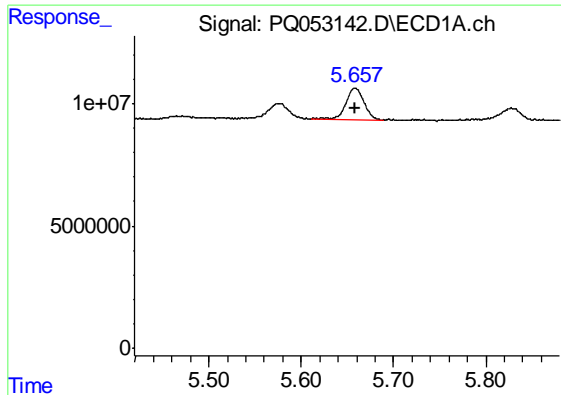
#9 AR-1221-2

R.T.: 5.575 min
 Delta R.T.: 0.004 min
 Response: 9938936
 Conc: 48.17 ng/ml



#9 AR-1221-2

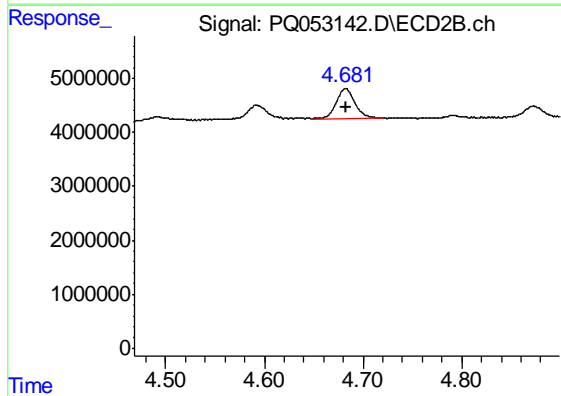
R.T.: 4.592 min
 Delta R.T.: -0.003 min
 Response: 3773970
 Conc: 42.47 ng/ml



#10 AR-1221-3

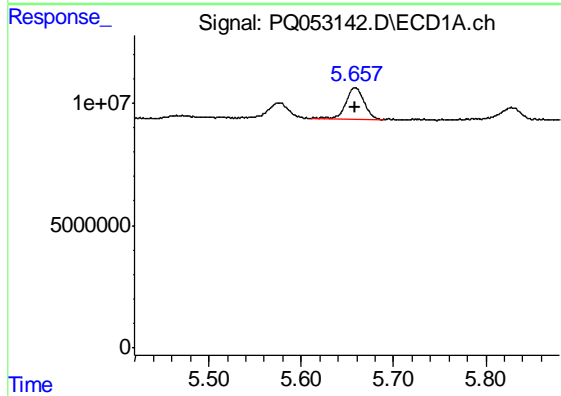
R.T.: 5.658 min
 Delta R.T.: -0.002 min
 Response: 18129373
 Conc: 26.12 ng/ml

Instrument :
 ECD_Q
 ClientSampleId :
 AR12483007



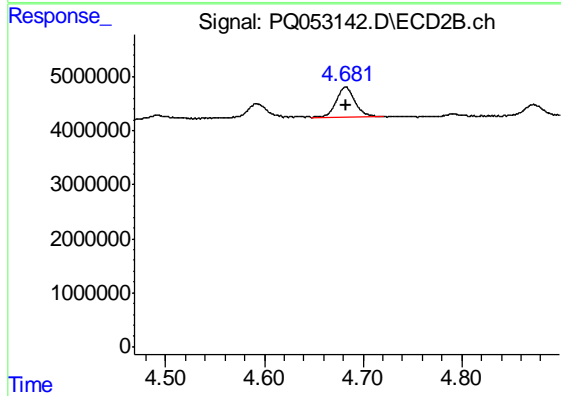
#10 AR-1221-3

R.T.: 4.682 min
 Delta R.T.: 0.000 min
 Response: 7520205
 Conc: 24.35 ng/ml



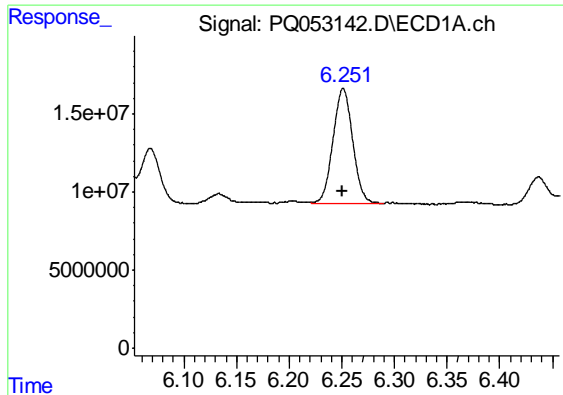
#11 AR-1232-1

R.T.: 5.658 min
 Delta R.T.: -0.002 min
 Response: 18129373
 Conc: 34.91 ng/ml



#11 AR-1232-1

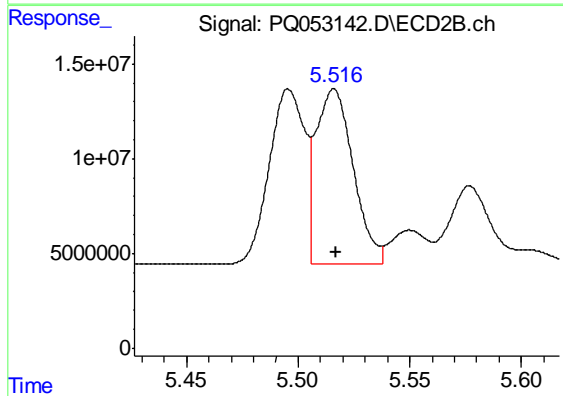
R.T.: 4.682 min
 Delta R.T.: 0.000 min
 Response: 7520205
 Conc: 32.94 ng/ml



#12 AR-1232-2

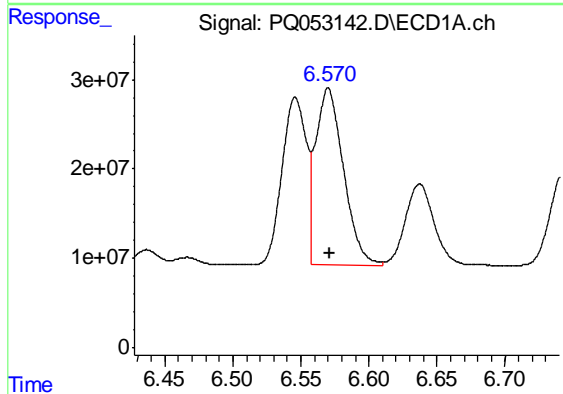
R.T.: 6.251 min
 Delta R.T.: 0.000 min
 Response: 95454699
 Conc: 340.89 ng/ml

Instrument :
 ECD_Q
 ClientSampled :
 AR12483007



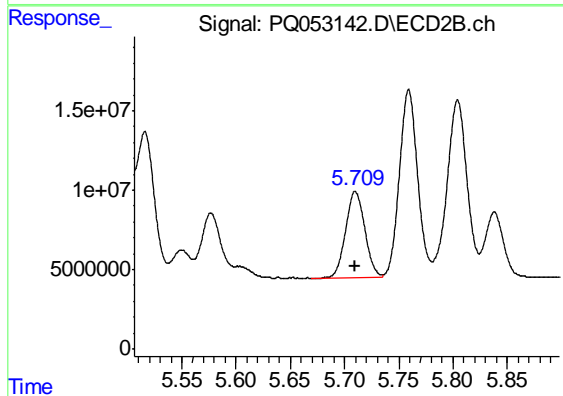
#12 AR-1232-2

R.T.: 5.516 min
 Delta R.T.: 0.000 min
 Response: 106406196
 Conc: 435.52 ng/ml



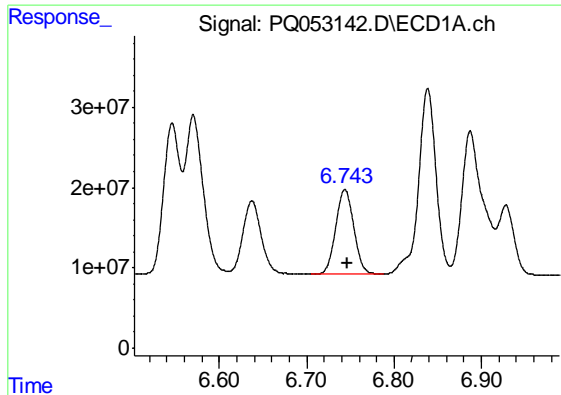
#13 AR-1232-3

R.T.: 6.570 min
 Delta R.T.: 0.000 min
 Response: 280800800
 Conc: 489.78 ng/ml



#13 AR-1232-3

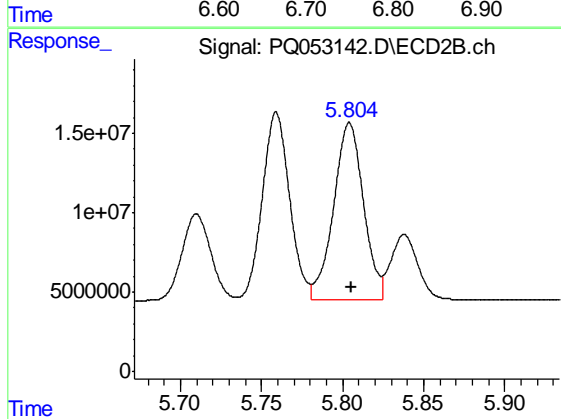
R.T.: 5.710 min
 Delta R.T.: 0.000 min
 Response: 67208977
 Conc: 549.54 ng/ml



#14 AR-1232-4

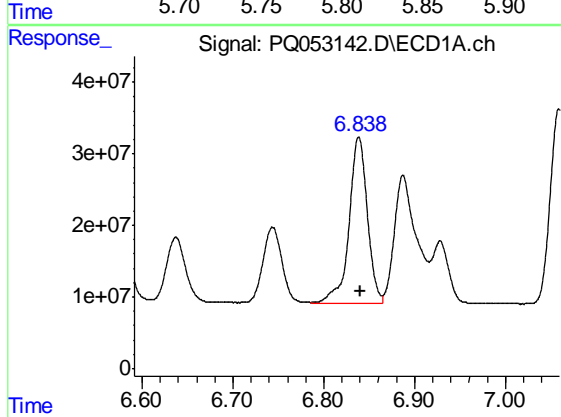
R.T.: 6.744 min
 Delta R.T.: -0.002 min
 Response: 152986532
 Conc: 534.90 ng/ml

Instrument :
 ECD_Q
 ClientSampled :
 AR12483007



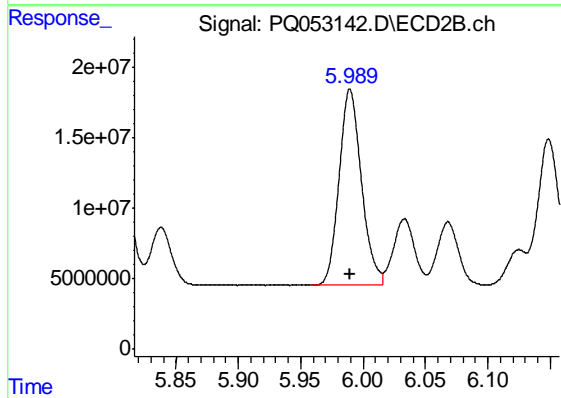
#14 AR-1232-4

R.T.: 5.804 min
 Delta R.T.: 0.000 min
 Response: 142427183
 Conc: 1360.34 ng/ml



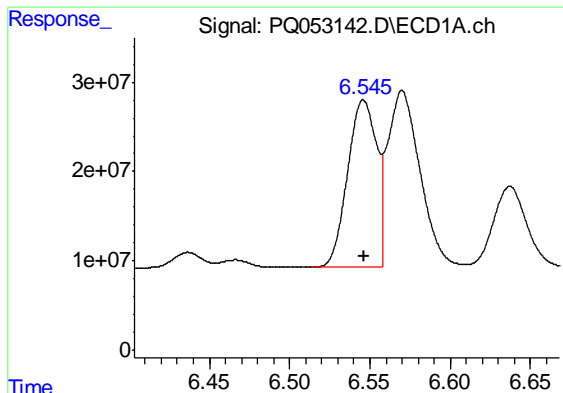
#15 AR-1232-5

R.T.: 6.839 min
 Delta R.T.: -0.001 min
 Response: 324773650
 Conc: 1591.54 ng/ml



#15 AR-1232-5

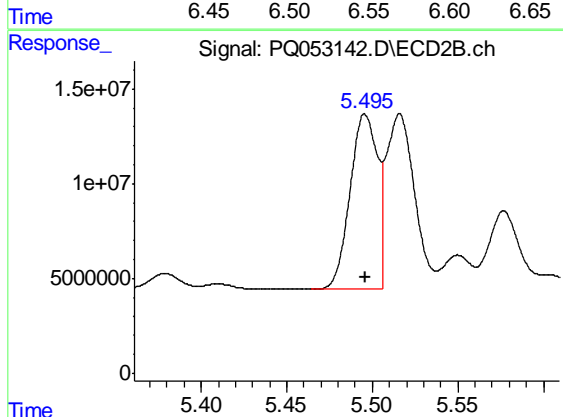
R.T.: 5.989 min
 Delta R.T.: 0.000 min
 Response: 173616242
 Conc: 1480.19 ng/ml



#16 AR-1242-1

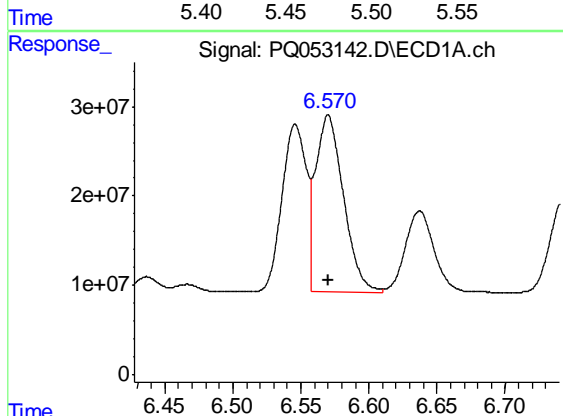
R.T.: 6.546 min
 Delta R.T.: 0.000 min
 Response: 236284687
 Conc: 260.58 ng/ml

Instrument :
 ECD_Q
 ClientSampleId :
 AR12483007



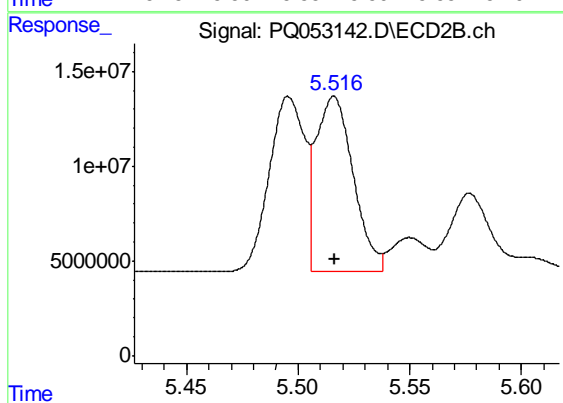
#16 AR-1242-1

R.T.: 5.496 min
 Delta R.T.: 0.000 min
 Response: 102337548
 Conc: 255.31 ng/ml



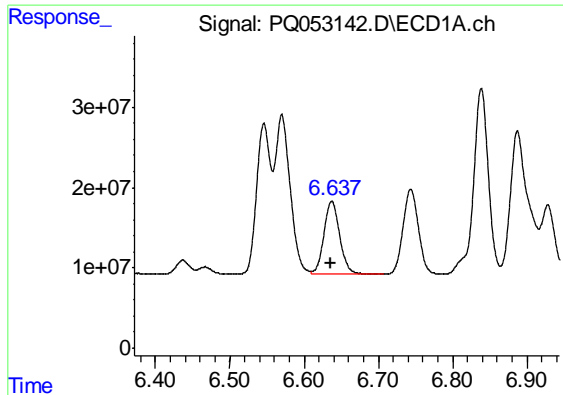
#17 AR-1242-2

R.T.: 6.570 min
 Delta R.T.: 0.000 min
 Response: 280800800
 Conc: 206.76 ng/ml



#17 AR-1242-2

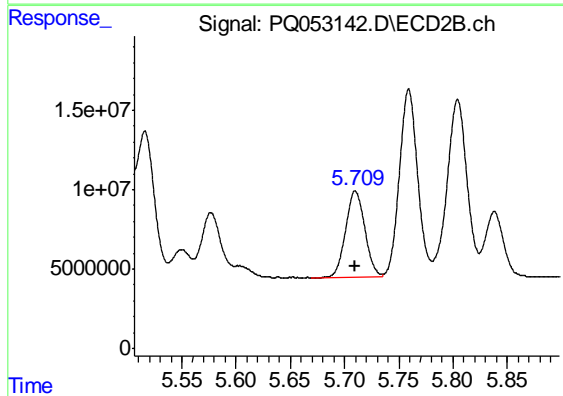
R.T.: 5.516 min
 Delta R.T.: 0.000 min
 Response: 106406196
 Conc: 182.43 ng/ml



#18 AR-1242-3

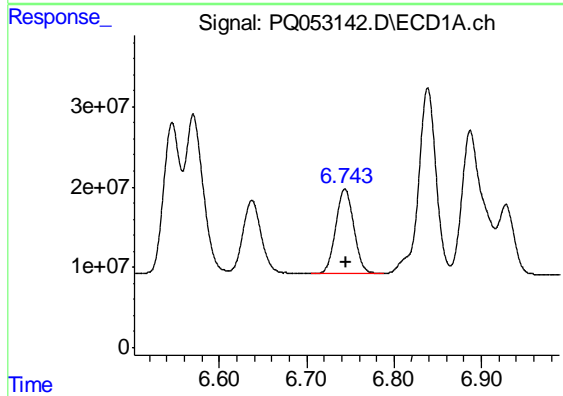
R.T.: 6.637 min
Delta R.T.: 0.000 min
Response: 134553364
Conc: 163.05 ng/ml

Instrument :
ECD_Q
ClientSampleId :
AR12483007



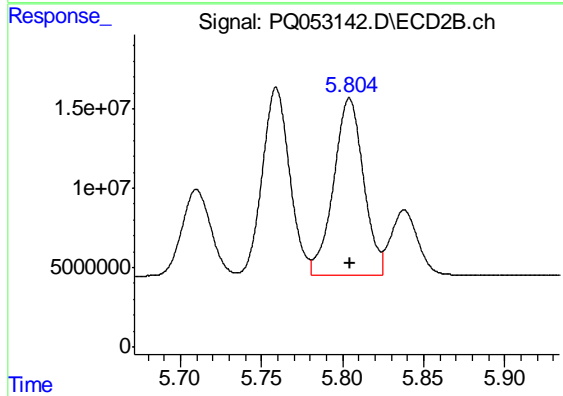
#18 AR-1242-3

R.T.: 5.710 min
Delta R.T.: 0.000 min
Response: 67208977
Conc: 221.86 ng/ml



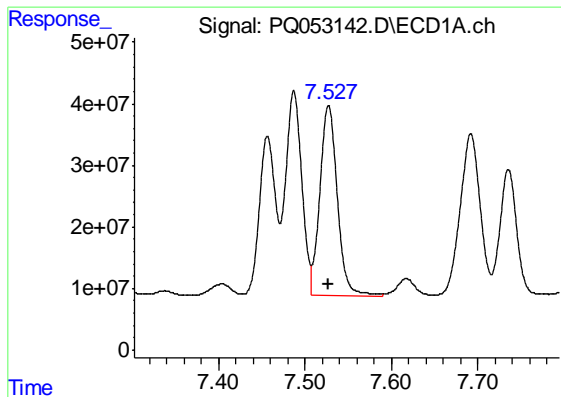
#19 AR-1242-4

R.T.: 6.744 min
Delta R.T.: 0.000 min
Response: 152986532
Conc: 223.30 ng/ml



#19 AR-1242-4

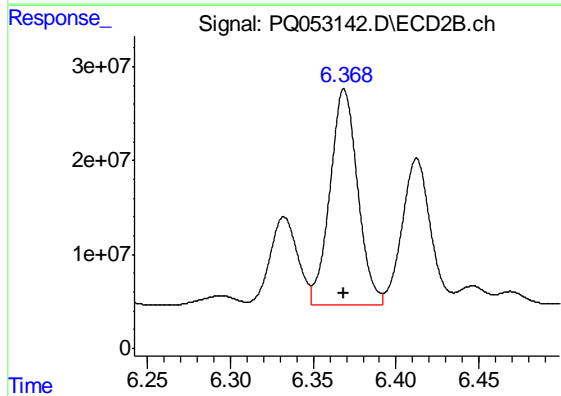
R.T.: 5.804 min
Delta R.T.: 0.000 min
Response: 142427183
Conc: 500.71 ng/ml



#20 AR-1242-5

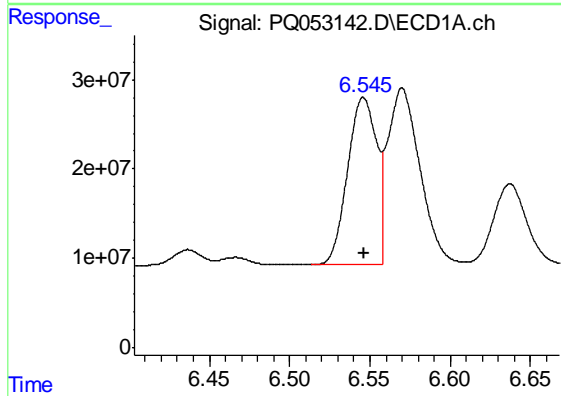
R.T.: 7.527 min
 Delta R.T.: 0.000 min
 Response: 434067004
 Conc: 595.01 ng/ml

Instrument :
 ECD_Q
 ClientSampleId :
 AR12483007



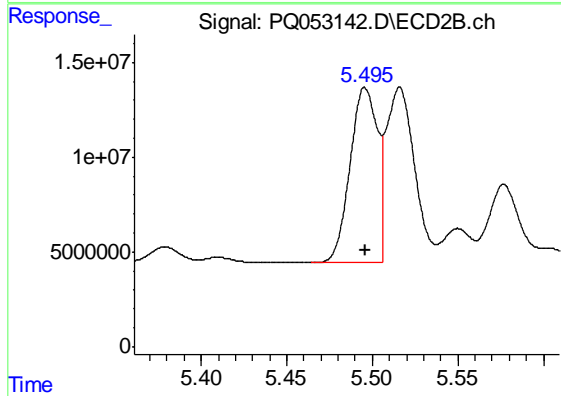
#20 AR-1242-5

R.T.: 6.369 min
 Delta R.T.: 0.000 min
 Response: 267736371
 Conc: 675.81 ng/ml



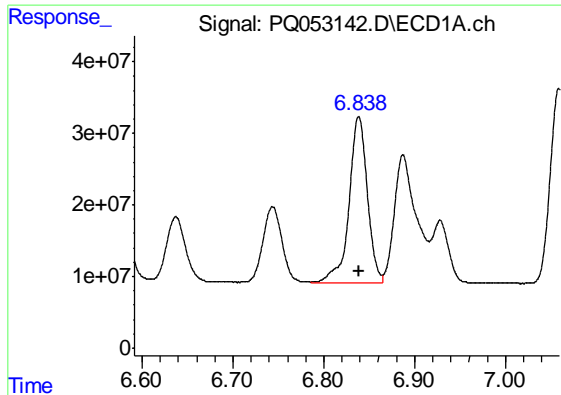
#21 AR-1248-1

R.T.: 6.546 min
 Delta R.T.: 0.000 min
 Response: 236284687
 Conc: 381.86 ng/ml



#21 AR-1248-1

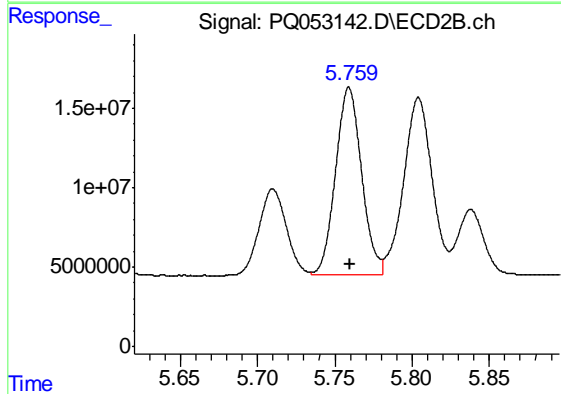
R.T.: 5.496 min
 Delta R.T.: 0.000 min
 Response: 102337548
 Conc: 375.72 ng/ml



#22 AR-1248-2

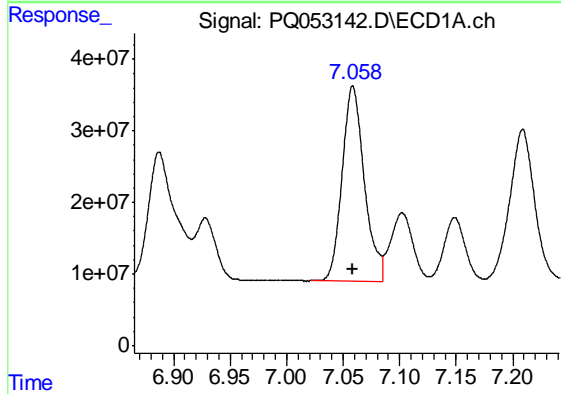
R.T.: 6.839 min
 Delta R.T.: 0.000 min
 Response: 324773650
 Conc: 372.37 ng/ml

Instrument :
 ECD_Q
 ClientSampleId :
 AR12483007



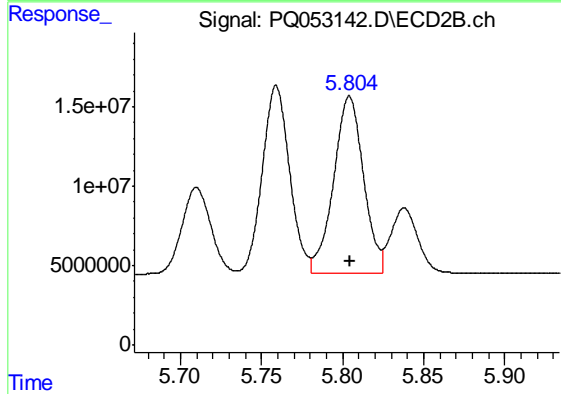
#22 AR-1248-2

R.T.: 5.759 min
 Delta R.T.: 0.000 min
 Response: 138331490
 Conc: 372.03 ng/ml



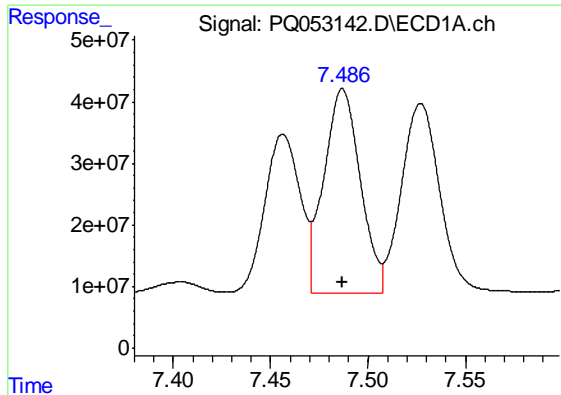
#23 AR-1248-3

R.T.: 7.059 min
 Delta R.T.: 0.000 min
 Response: 371651534
 Conc: 379.15 ng/ml



#23 AR-1248-3

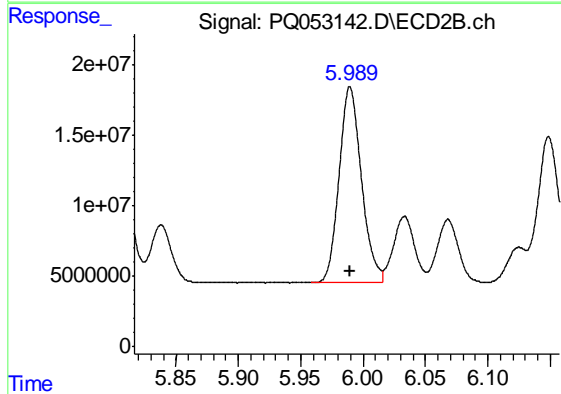
R.T.: 5.804 min
 Delta R.T.: 0.000 min
 Response: 142427183
 Conc: 373.04 ng/ml



#24 AR-1248-4

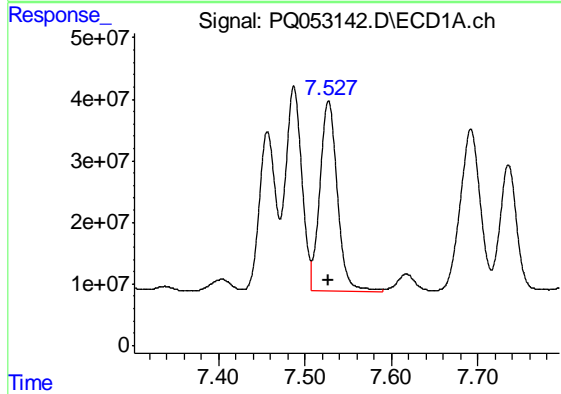
R.T.: 7.487 min
 Delta R.T.: 0.000 min
 Response: 434310292
 Conc: 380.06 ng/ml

Instrument :
 ECD_Q
 ClientSampleId :
 AR12483007



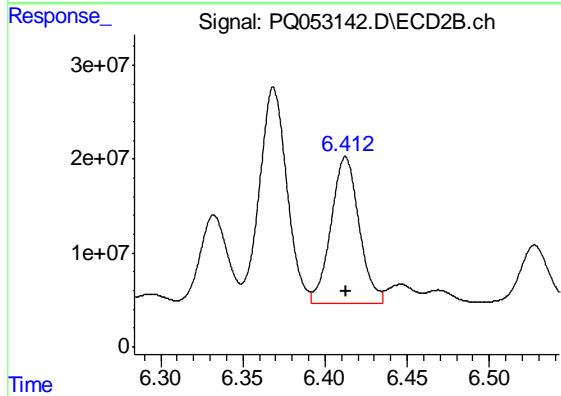
#24 AR-1248-4

R.T.: 5.989 min
 Delta R.T.: 0.000 min
 Response: 173616242
 Conc: 371.38 ng/ml



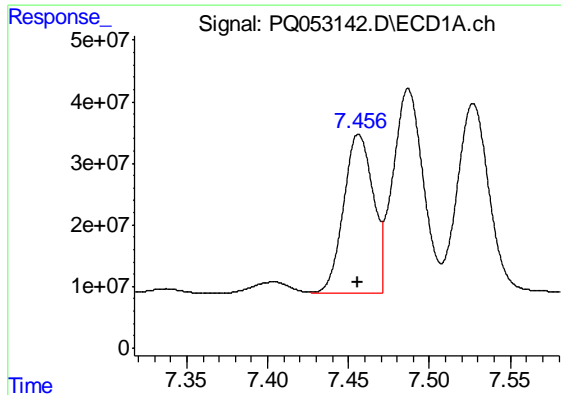
#25 AR-1248-5

R.T.: 7.527 min
 Delta R.T.: 0.000 min
 Response: 434067004
 Conc: 380.88 ng/ml



#25 AR-1248-5

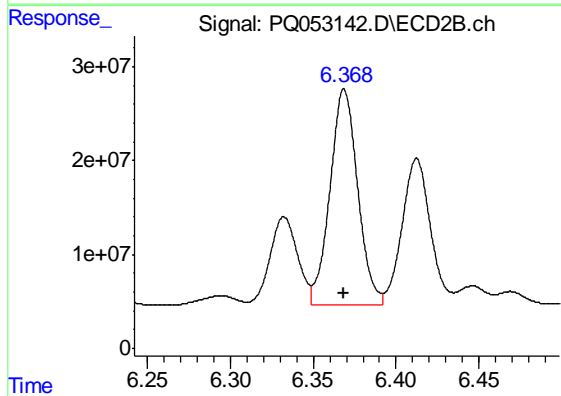
R.T.: 6.413 min
 Delta R.T.: 0.000 min
 Response: 185573758
 Conc: 377.14 ng/ml



#26 AR-1254-1

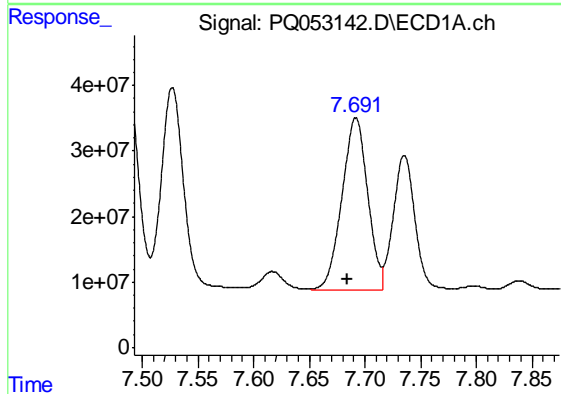
R.T.: 7.456 min
Delta R.T.: 0.000 min
Response: 329701353
Conc: 209.73 ng/ml

Instrument :
ECD_Q
ClientSampleId :
AR12483007



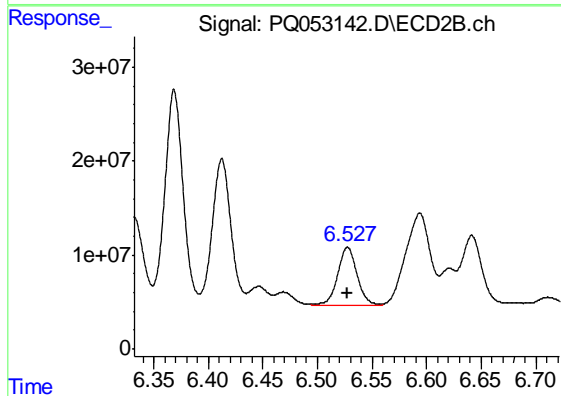
#26 AR-1254-1

R.T.: 6.369 min
Delta R.T.: 0.000 min
Response: 267736371
Conc: 249.70 ng/ml



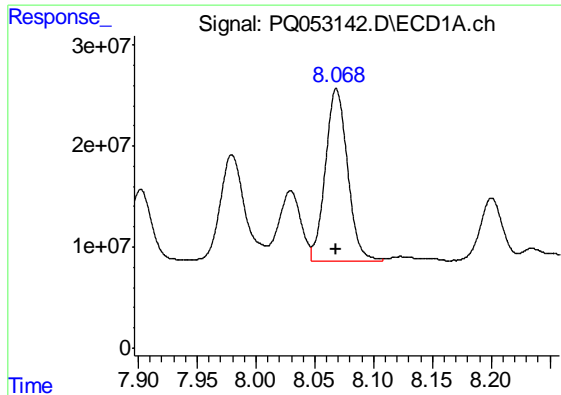
#27 AR-1254-2

R.T.: 7.692 min
Delta R.T.: 0.007 min
Response: 423840642
Conc: 173.12 ng/ml



#27 AR-1254-2

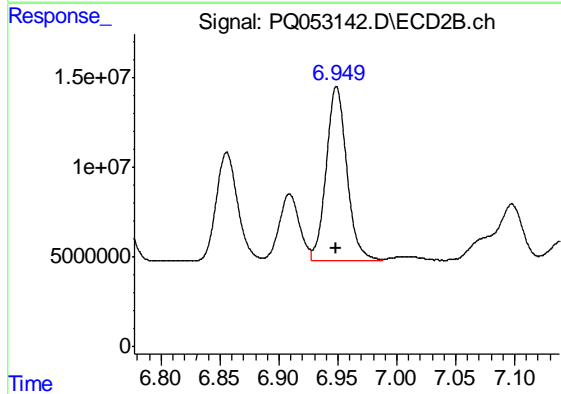
R.T.: 6.528 min
Delta R.T.: 0.000 min
Response: 75330454
Conc: 78.98 ng/ml



#28 AR-1254-3

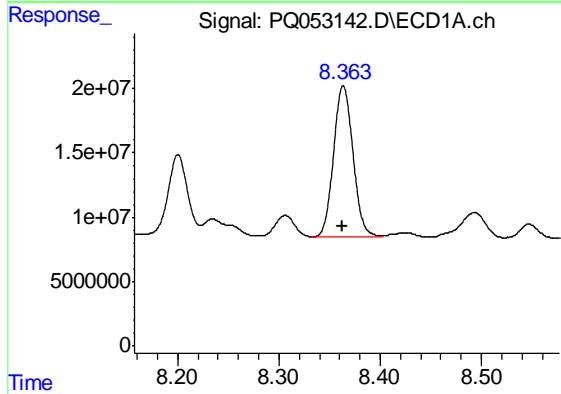
R.T.: 8.068 min
 Delta R.T.: 0.000 min
 Response: 224178940
 Conc: 85.19 ng/ml

Instrument :
 ECD_Q
 ClientSampleId :
 AR12483007



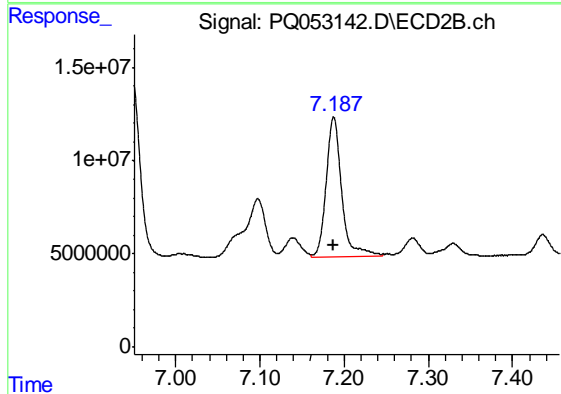
#28 AR-1254-3

R.T.: 6.949 min
 Delta R.T.: 0.000 min
 Response: 117826240
 Conc: 76.07 ng/ml



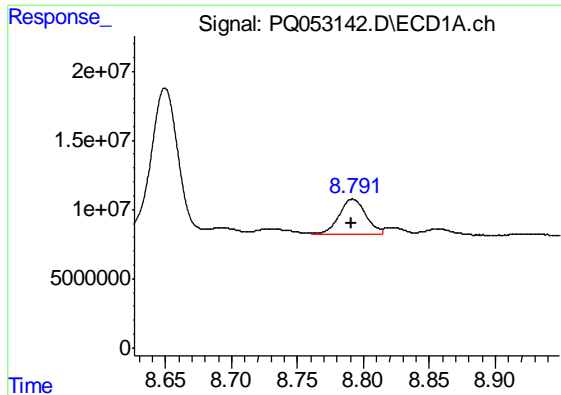
#29 AR-1254-4

R.T.: 8.364 min
 Delta R.T.: 0.000 min
 Response: 157271040
 Conc: 81.72 ng/ml



#29 AR-1254-4

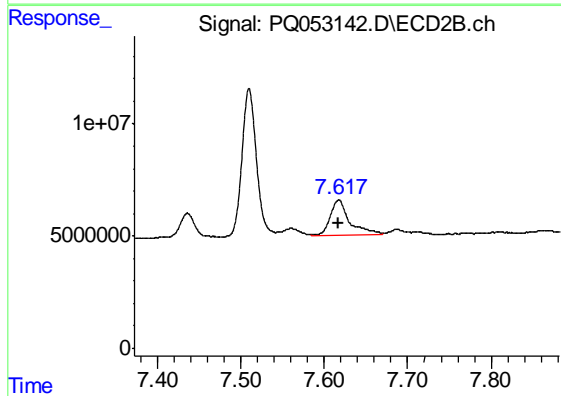
R.T.: 7.188 min
 Delta R.T.: 0.000 min
 Response: 96447768
 Conc: 92.11 ng/ml



#30 AR-1254-5

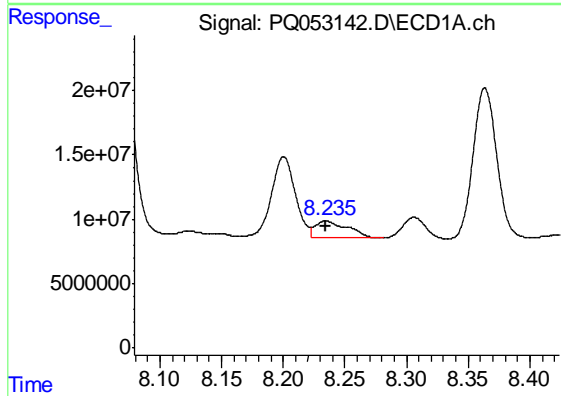
R.T.: 8.792 min
 Delta R.T.: 0.000 min
 Response: 36521789
 Conc: 17.85 ng/ml

Instrument :
 ECD_Q
 ClientSampleId :
 AR12483007



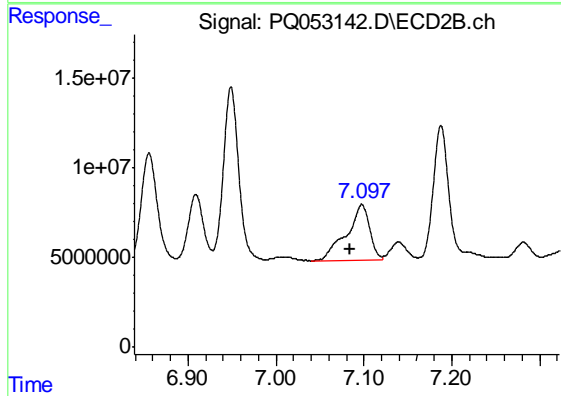
#30 AR-1254-5

R.T.: 7.617 min
 Delta R.T.: 0.000 min
 Response: 25970362
 Conc: 17.80 ng/ml



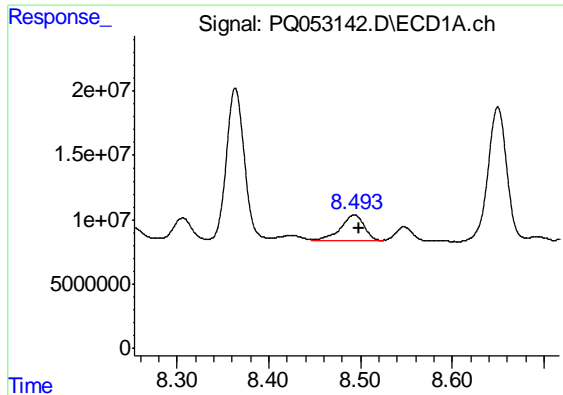
#31 AR-1260-1

R.T.: 8.235 min
 Delta R.T.: 0.000 min
 Response: 23536091
 Conc: 20.44 ng/ml



#31 AR-1260-1

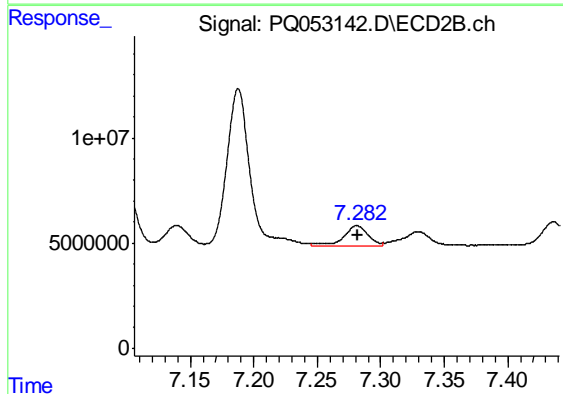
R.T.: 7.098 min
 Delta R.T.: 0.013 min
 Response: 57516481
 Conc: 88.76 ng/ml



#32 AR-1260-2

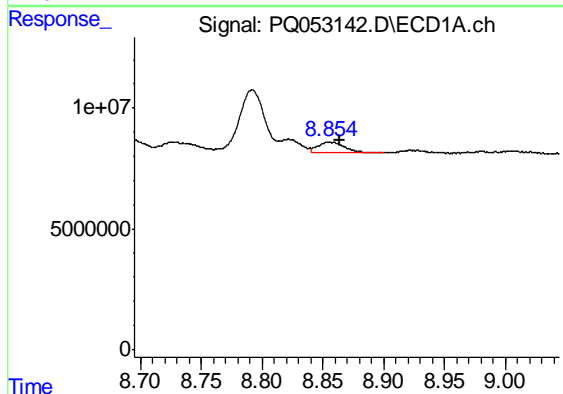
R.T.: 8.493 min
 Delta R.T.: -0.005 min
 Response: 35405303
 Conc: 25.41 ng/ml

Instrument :
 ECD_Q
 ClientSampleId :
 AR12483007



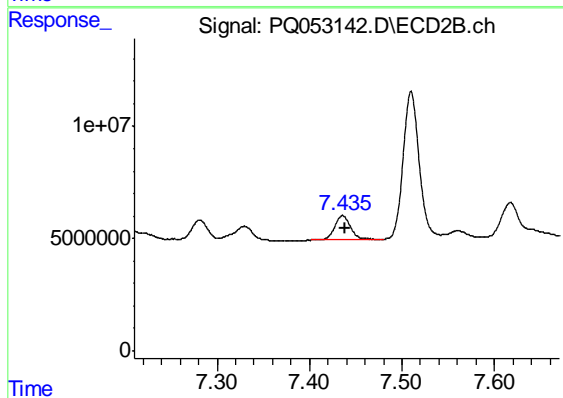
#32 AR-1260-2

R.T.: 7.281 min
 Delta R.T.: 0.000 min
 Response: 13302611
 Conc: 14.35 ng/ml



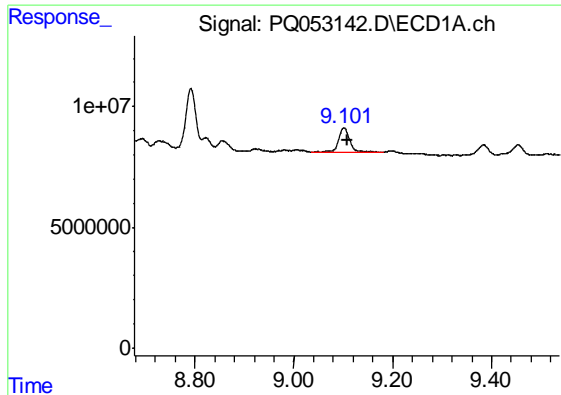
#33 AR-1260-3

R.T.: 8.855 min
 Delta R.T.: -0.009 min
 Response: 6115167
 Conc: 5.71 ng/ml



#33 AR-1260-3

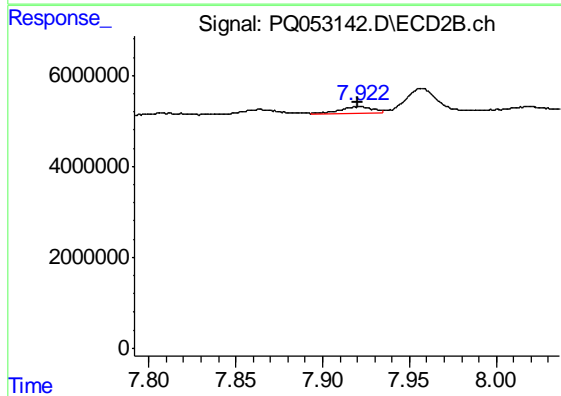
R.T.: 7.436 min
 Delta R.T.: -0.002 min
 Response: 12870791
 Conc: 16.54 ng/ml



#34 AR-1260-4

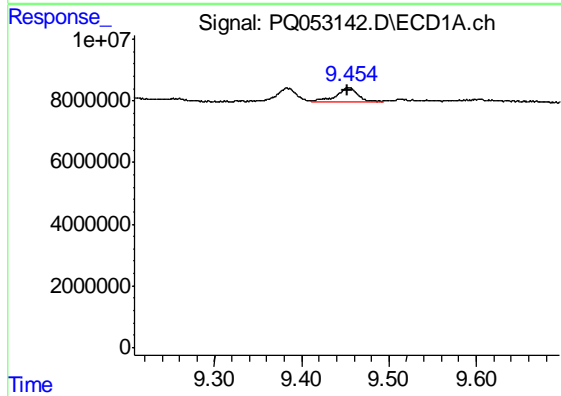
R.T.: 9.101 min
 Delta R.T.: -0.007 min
 Response: 15615418
 Conc: 12.90 ng/ml

Instrument :
 ECD_Q
 ClientSampleId :
 AR12483007



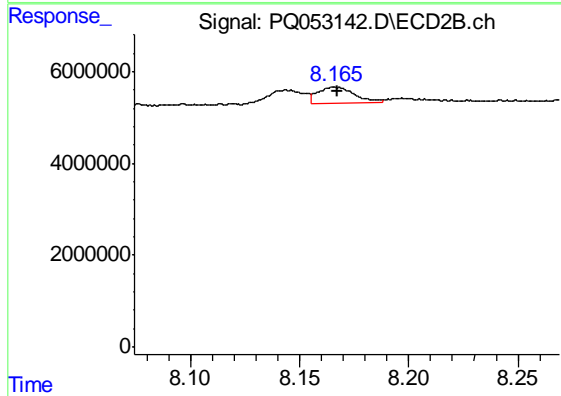
#34 AR-1260-4

R.T.: 7.922 min
 Delta R.T.: 0.001 min
 Response: 1853461
 Conc: 2.73 ng/ml



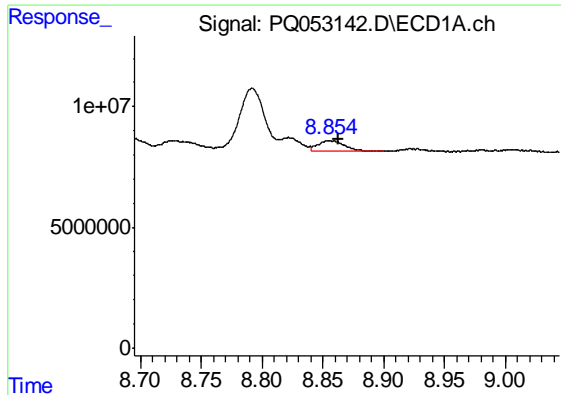
#35 AR-1260-5

R.T.: 9.453 min
 Delta R.T.: 0.000 min
 Response: 7201860
 Conc: 2.81 ng/ml



#35 AR-1260-5

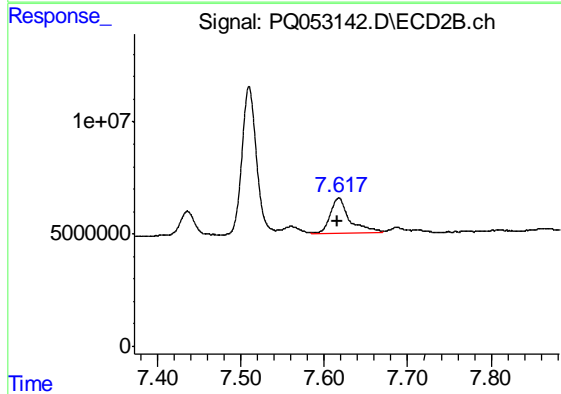
R.T.: 8.166 min
 Delta R.T.: 0.000 min
 Response: 4049623
 Conc: 2.19 ng/ml



#36 AR-1262-1

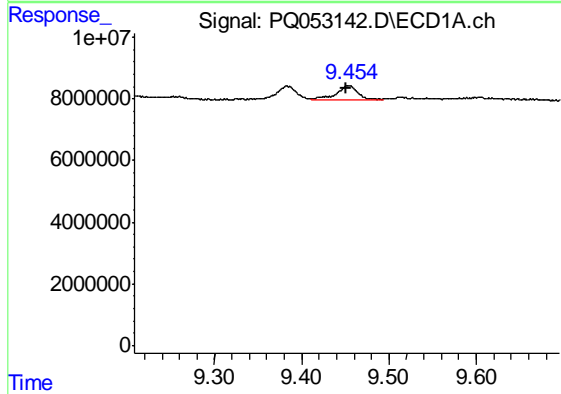
R.T.: 8.855 min
 Delta R.T.: -0.008 min
 Response: 6115167
 Conc: 3.06 ng/ml

Instrument :
 ECD_Q
 ClientSampleId :
 AR12483007



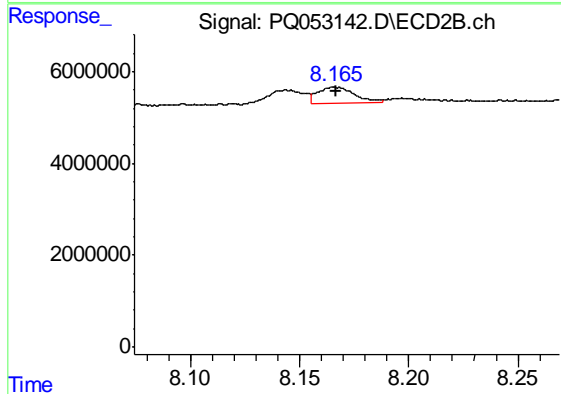
#36 AR-1262-1

R.T.: 7.617 min
 Delta R.T.: 0.002 min
 Response: 25970362
 Conc: 42.37 ng/ml



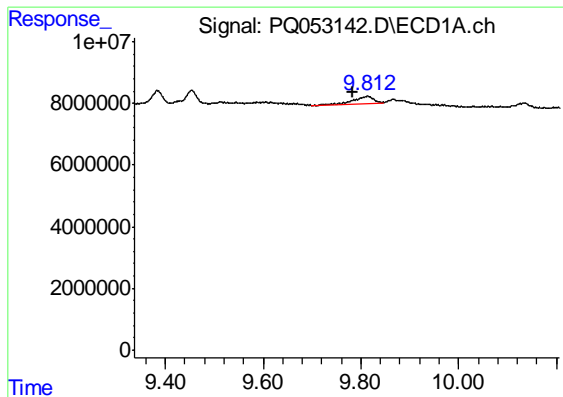
#37 AR-1262-2

R.T.: 9.453 min
 Delta R.T.: 0.003 min
 Response: 7201860
 Conc: 1.94 ng/ml



#37 AR-1262-2

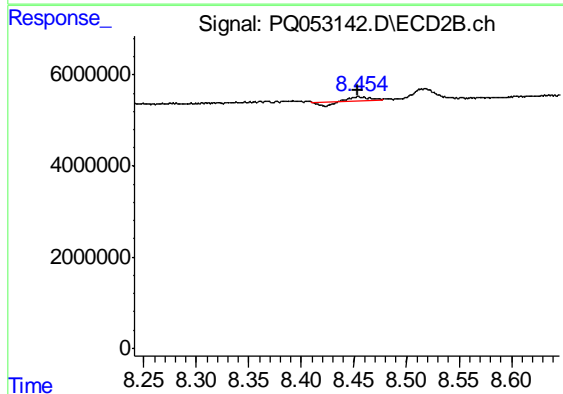
R.T.: 8.166 min
 Delta R.T.: 0.000 min
 Response: 4049623
 Conc: 1.59 ng/ml



#38 AR-1262-3

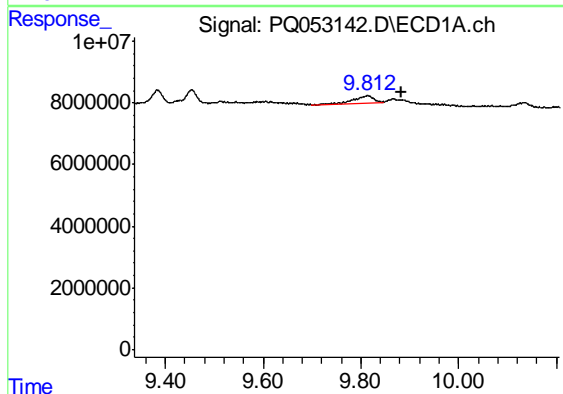
R.T.: 9.814 min
 Delta R.T.: 0.031 min
 Response: 6223303
 Conc: 2.48 ng/ml

Instrument :
 ECD_Q
 ClientSampleId :
 AR12483007



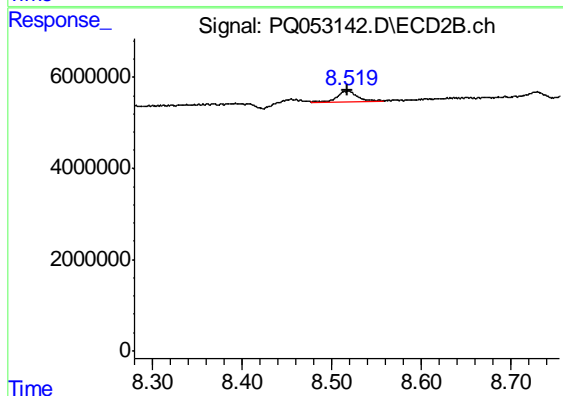
#38 AR-1262-3

R.T.: 8.454 min
 Delta R.T.: 0.000 min
 Response: 772729
 Conc: 0.76 ng/ml



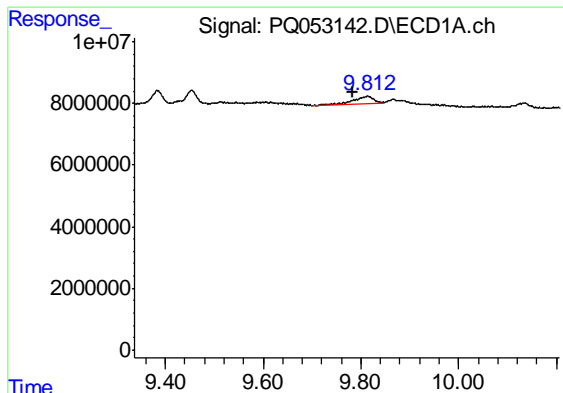
#39 AR-1262-4

R.T.: 9.814 min
 Delta R.T.: -0.070 min
 Response: 6223303
 Conc: 3.11 ng/ml



#39 AR-1262-4

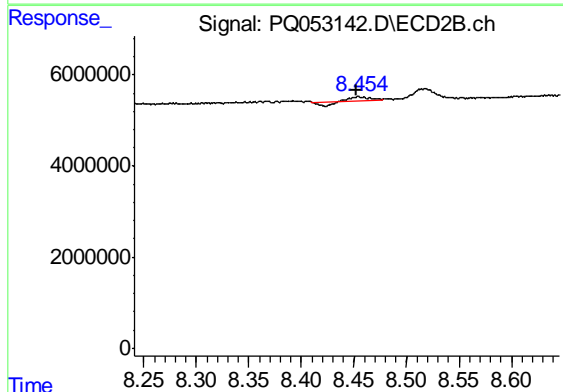
R.T.: 8.519 min
 Delta R.T.: 0.000 min
 Response: 4014157
 Conc: 2.33 ng/ml



#41 AR-1268-1

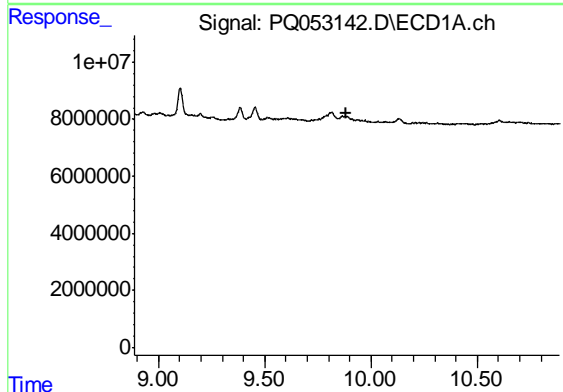
R.T.: 9.814 min
 Delta R.T.: 0.030 min
 Response: 6223303
 Conc: 1.40 ng/ml

Instrument :
 ECD_Q
 ClientSampleId :
 AR12483007



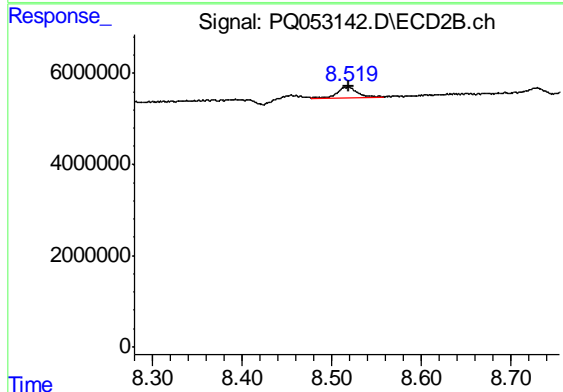
#41 AR-1268-1

R.T.: 8.454 min
 Delta R.T.: 0.002 min
 Response: 772729
 Conc: 0.26 ng/ml



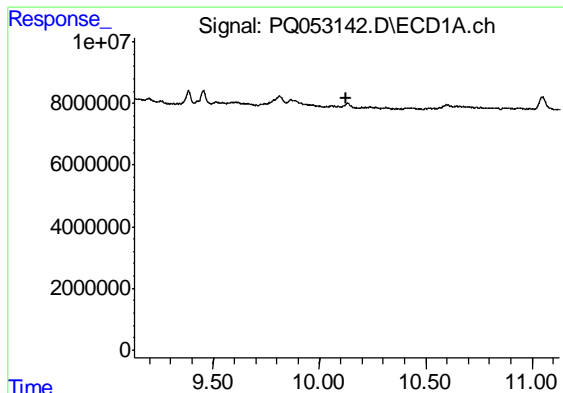
#42 AR-1268-2

R.T.: 0.000 min
 Exp R.T. : 9.886 min
 Response: 0
 Conc: N.D.



#42 AR-1268-2

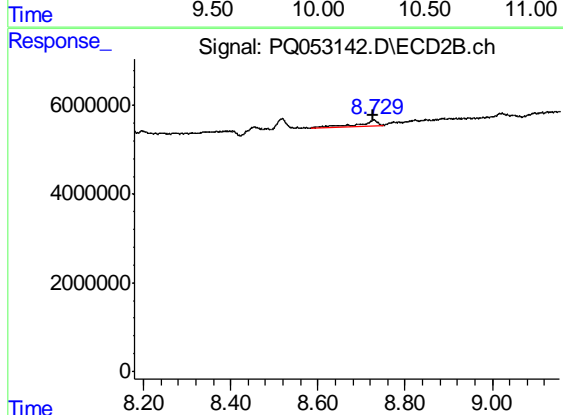
R.T.: 8.519 min
 Delta R.T.: 0.000 min
 Response: 4014157
 Conc: 1.61 ng/ml



#43 AR-1268-3

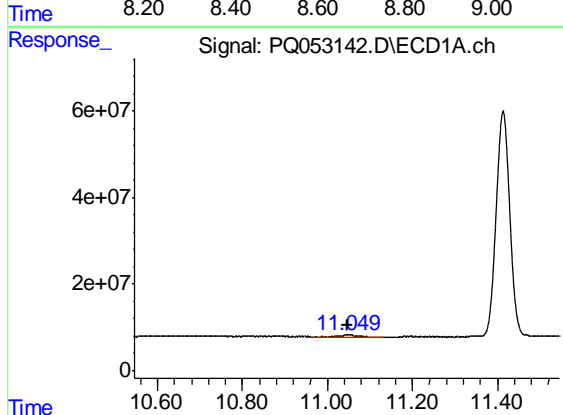
R.T.: 0.000 min
 Exp R.T. : 10.129 min
 Response: 0
 Conc: N.D.

Instrument :
 ECD_Q
 ClientSampleId :
 AR12483007



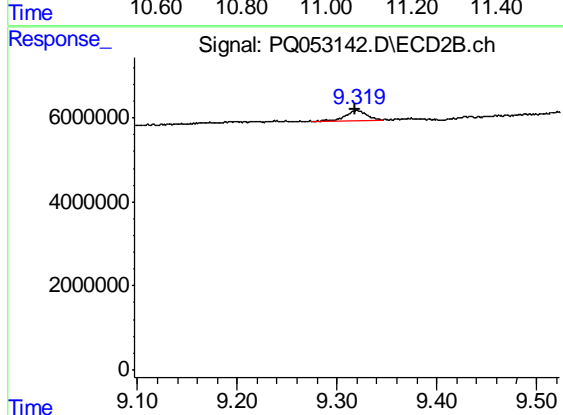
#43 AR-1268-3

R.T.: 8.728 min
 Delta R.T.: 0.001 min
 Response: 4072683
 Conc: 1.88 ng/ml



#45 AR-1268-5

R.T.: 11.050 min
 Delta R.T.: 0.003 min
 Response: 9375092
 Conc: 0.73 ng/ml



#45 AR-1268-5

R.T.: 9.320 min
 Delta R.T.: 0.002 min
 Response: 3385806
 Conc: 0.55 ng/ml