

Data Path : Z:\pestpcbsrv\HPCHEM1\ECD_Q\Data\PQ042221\
 Data File : PQ053144.D
 Signal(s) : Signal #1: ECD1A.ch Signal #2: ECD2B.ch
 Acq On : 22 Apr 2021 15:28
 Operator : DD\AJ
 Sample : PB135916BL
 Misc :
 ALS Vial : 12 Sample Multiplier: 1

Instrument :
 ECD_Q
ClientSampleId :
 ABLK916

Integration File signal 1: autoint1.e
 Integration File signal 2: autoint2.e
 Quant Time: Apr 22 22:11:57 2021
 Quant Method : Z:\pestpcbsrv\HPCHEM1\ECD_Q\Method\PQ042021CLP.M
 Quant Title : GC EXTRACTABLES
 QLast Update : Wed Apr 21 07:47:07 2021
 Response via : Initial Calibration
 Integrator: ChemStation

Volume Inj. : 1 µl
 Signal #1 Phase : ZB MR1 Signal #2 Phase: ZB MR2
 Signal #1 Info : 30Mx0.32mmx 0.5µm Signal #2 Info : 30M x 0.32mm x 0.25µm

Compound	RT#1	RT#2	Resp#1	Resp#2	ng/ml	ng/ml

System Monitoring Compounds						
1) SA Tetrachlo...	5.224	4.236	542.1E6	217.4E6	19.321	18.696
2) SA Decachlor...	11.417	9.579	1126.7E6	499.9E6	39.837	40.165
Target Compounds						
9) L2 AR-1221-2	5.579	4.592	7122934	2326433	34.520	26.182
20) L4 AR-1242-5	7.550	0.000	9590035	0	13.146	N.D. #
24) L5 AR-1248-4	7.550f	0.000	9590035	0	8.392	N.D. #
25) L5 AR-1248-5	7.550	0.000	9590035	0	8.415	N.D. #
27) L6 AR-1254-2	0.000	6.546	0	2826079	N.D.	2.963 #
32) L7 AR-1260-2	8.509	7.287	3490305	1439087	2.505	1.552 #
43) L9 AR-1268-3	0.000	8.727	0	1310436	N.D.	0.604 #
45) L9 AR-1268-5	11.052	9.320	7072673	3020854	0.549	0.487

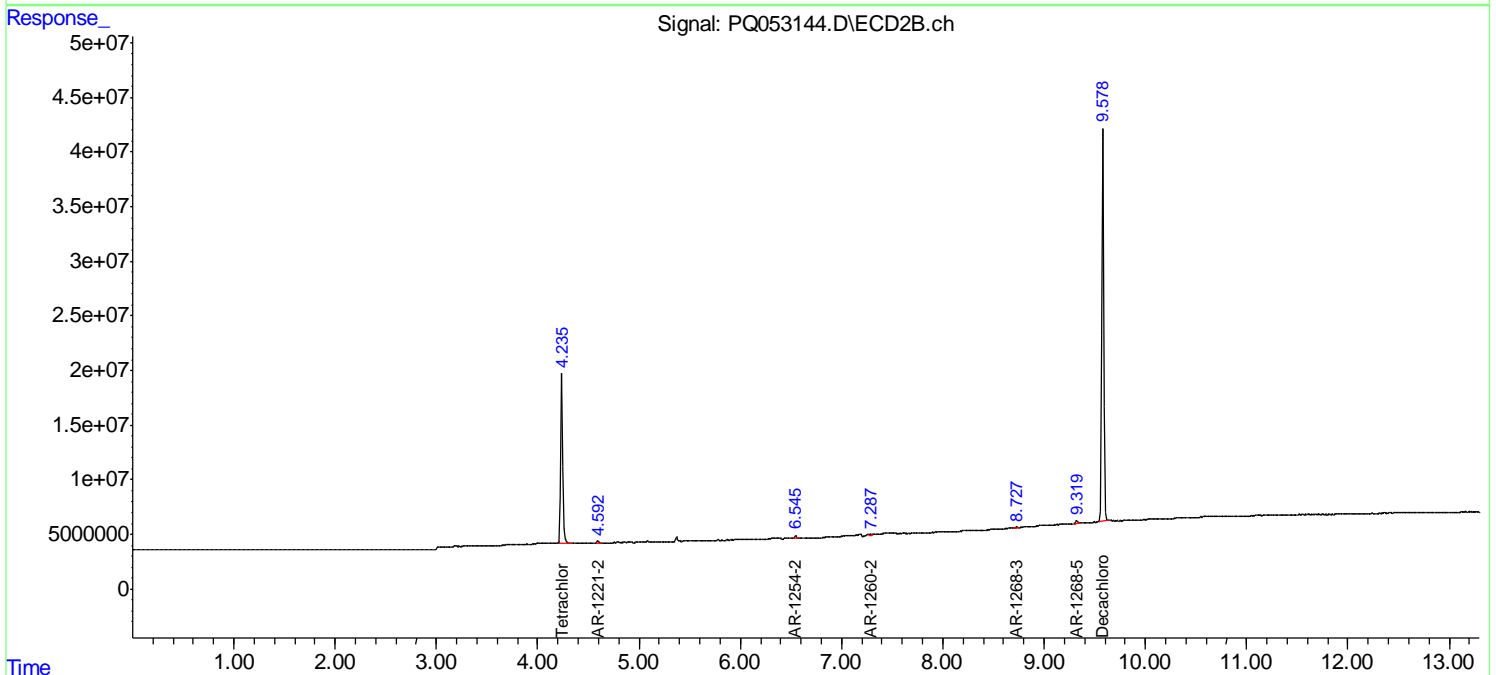
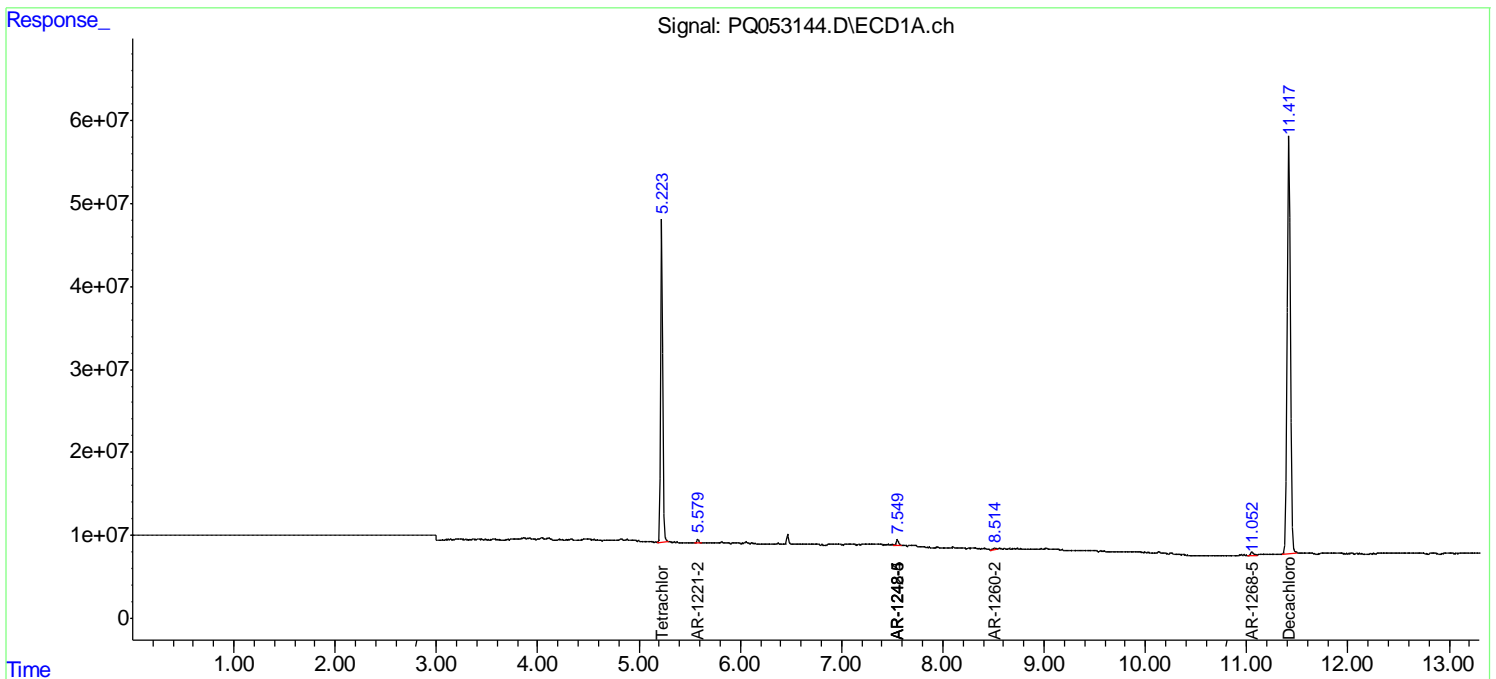
(f)=RT Delta > 1/2 Window (#)=Amounts differ by > 25% (m)=manual int.

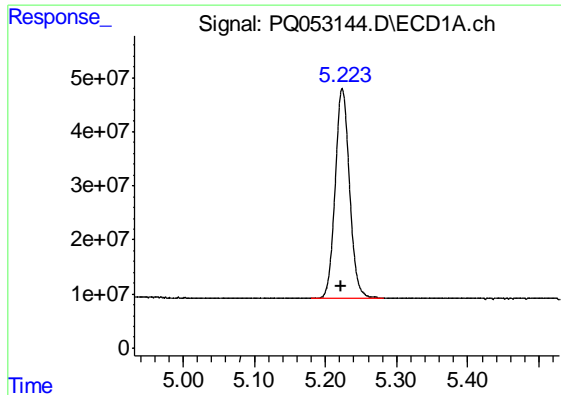
Data Path : Z:\pestpcbsrv\HPCHEM1\ECD_Q\Data\PQ042221\
 Data File : PQ053144.D
 Signal(s) : Signal #1: ECD1A.ch Signal #2: ECD2B.ch
 Acq On : 22 Apr 2021 15:28
 Operator : DD\AJ
 Sample : PB135916BL
 Misc :
 ALS Vial : 12 Sample Multiplier: 1

Instrument :
 ECD_Q
 ClientSampled :
 ABLK916

Integration File signal 1: autoint1.e
 Integration File signal 2: autoint2.e
 Quant Time: Apr 22 22:11:57 2021
 Quant Method : Z:\pestpcbsrv\HPCHEM1\ECD_Q\Method\PQ042021CLP.M
 Quant Title : GC EXTRACTABLES
 QLast Update : Wed Apr 21 07:47:07 2021
 Response via : Initial Calibration
 Integrator: ChemStation

Volume Inj. : 1 µl
 Signal #1 Phase : ZB MR1 Signal #2 Phase: ZB MR2
 Signal #1 Info : 30Mx0.32mmx 0.5µm Signal #2 Info : 30M x 0.32mm x 0.25µm

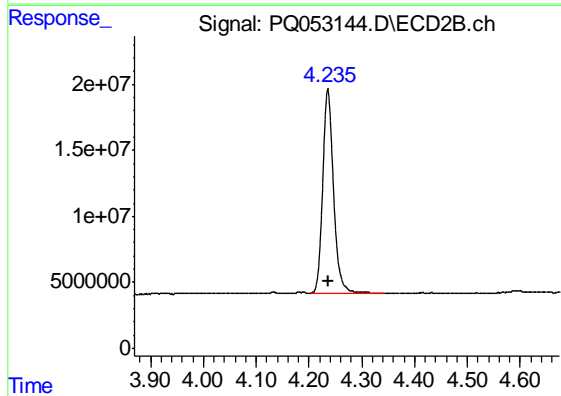




#1 Tetrachloro-m-xylene

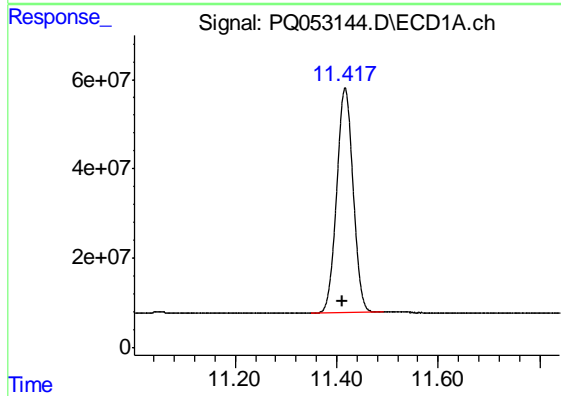
R.T.: 5.224 min
Delta R.T.: 0.002 min
Response: 542138267
Conc: 19.32 ng/ml

Instrument :
ECD_Q
ClientSampleId :
ABLK916



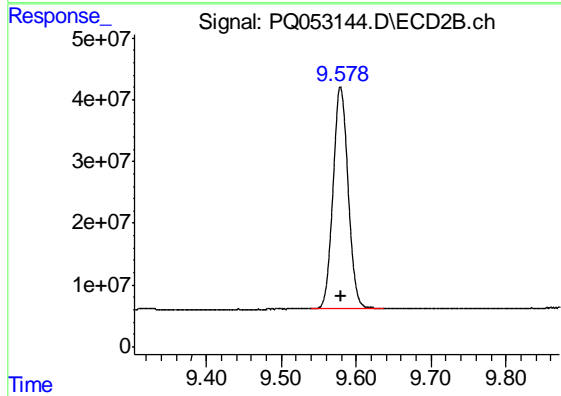
#1 Tetrachloro-m-xylene

R.T.: 4.236 min
Delta R.T.: -0.001 min
Response: 217406549
Conc: 18.70 ng/ml



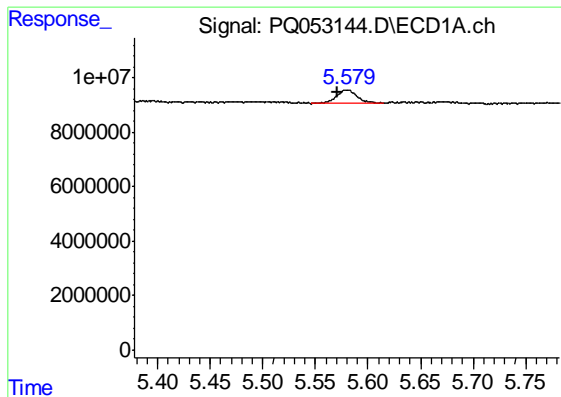
#2 Decachlorobiphenyl

R.T.: 11.417 min
Delta R.T.: 0.005 min
Response: 1126668986
Conc: 39.84 ng/ml



#2 Decachlorobiphenyl

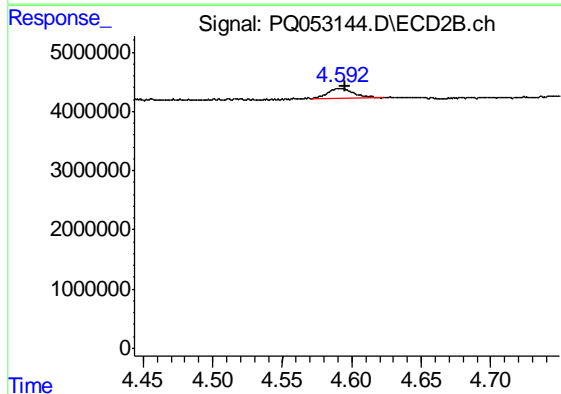
R.T.: 9.579 min
Delta R.T.: 0.000 min
Response: 499900959
Conc: 40.16 ng/ml



#9 AR-1221-2

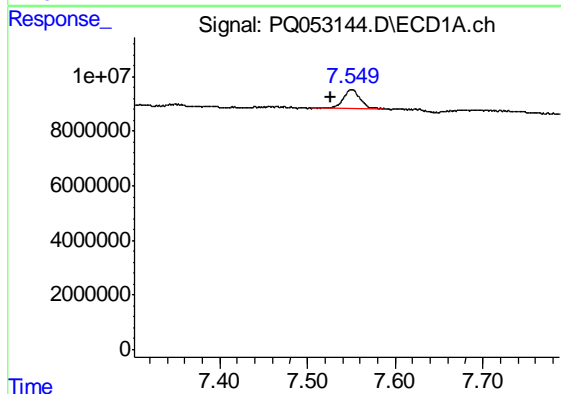
R.T.: 5.579 min
 Delta R.T.: 0.008 min
 Response: 7122934
 Conc: 34.52 ng/ml

Instrument :
 ECD_Q
 ClientSampleId :
 ABLK916



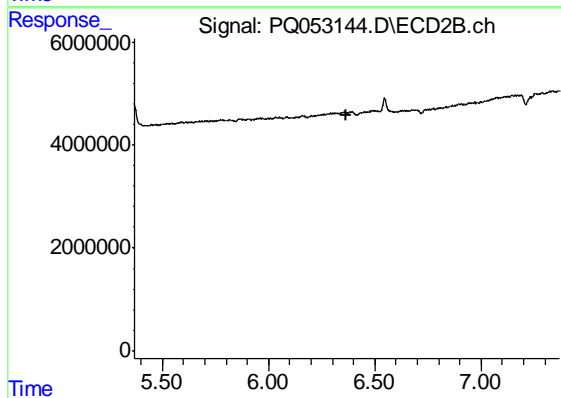
#9 AR-1221-2

R.T.: 4.592 min
 Delta R.T.: -0.003 min
 Response: 2326433
 Conc: 26.18 ng/ml



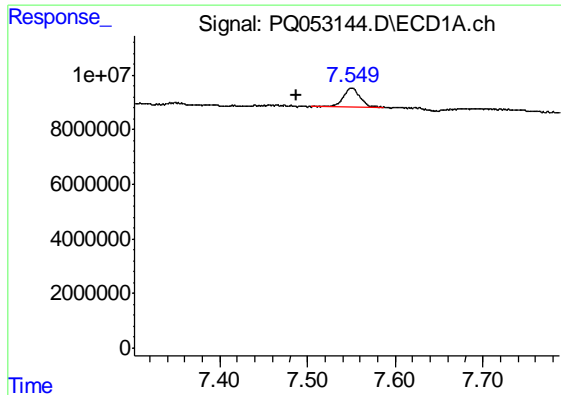
#20 AR-1242-5

R.T.: 7.550 min
 Delta R.T.: 0.023 min
 Response: 9590035
 Conc: 13.15 ng/ml



#20 AR-1242-5

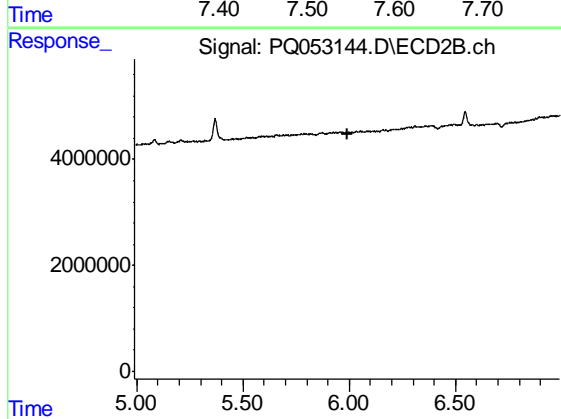
R.T.: 0.000 min
 Exp R.T. : 6.369 min
 Response: 0
 Conc: N.D.



#24 AR-1248-4

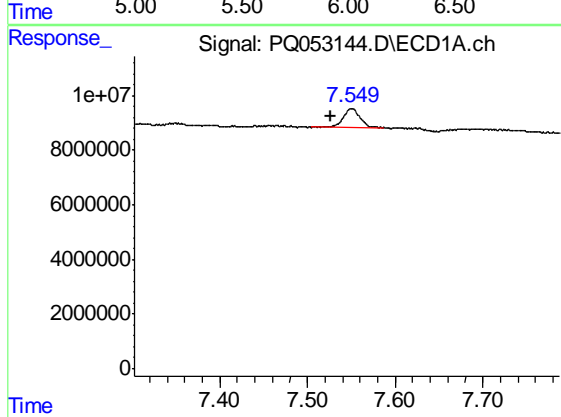
R.T.: 7.550 min
 Delta R.T.: 0.063 min
 Response: 9590035
 Conc: 8.39 ng/ml

Instrument :
 ECD_Q
 ClientSampleId :
 ABLK916



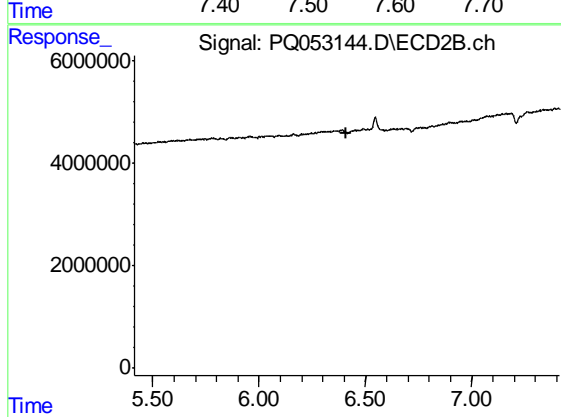
#24 AR-1248-4

R.T.: 0.000 min
 Exp R.T. : 5.990 min
 Response: 0
 Conc: N.D.



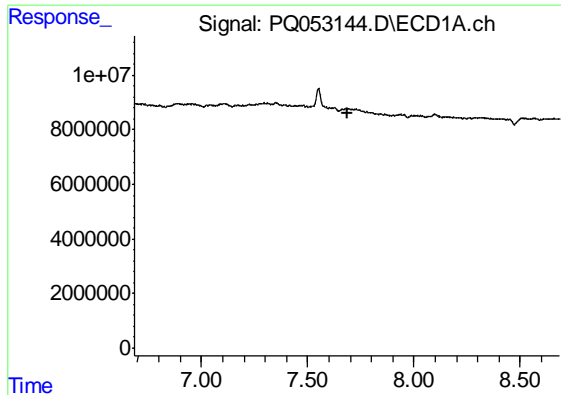
#25 AR-1248-5

R.T.: 7.550 min
 Delta R.T.: 0.023 min
 Response: 9590035
 Conc: 8.42 ng/ml



#25 AR-1248-5

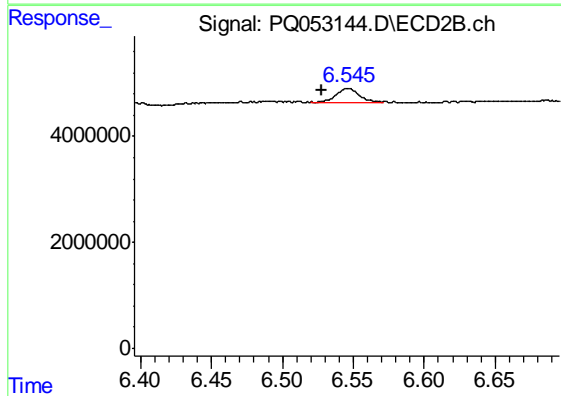
R.T.: 0.000 min
 Exp R.T. : 6.413 min
 Response: 0
 Conc: N.D.



#27 AR-1254-2

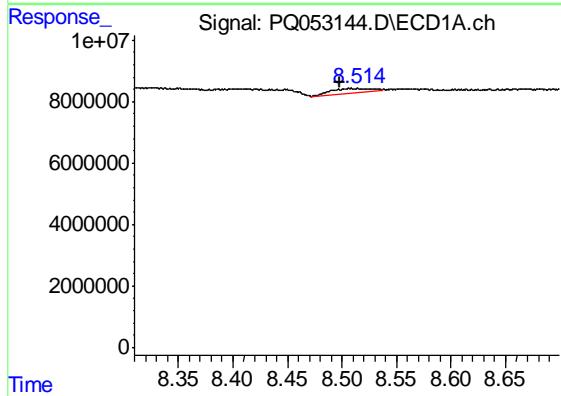
R.T.: 0.000 min
 Exp R.T. : 7.685 min
 Response: 0
 Conc: N.D.

Instrument :
 ECD_Q
 ClientSampleId :
 ABLK916



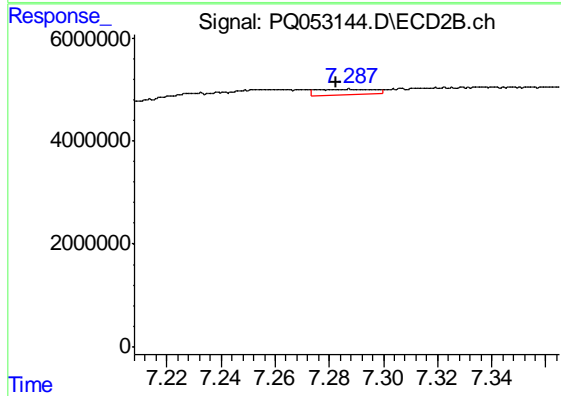
#27 AR-1254-2

R.T.: 6.546 min
 Delta R.T.: 0.019 min
 Response: 2826079
 Conc: 2.96 ng/ml



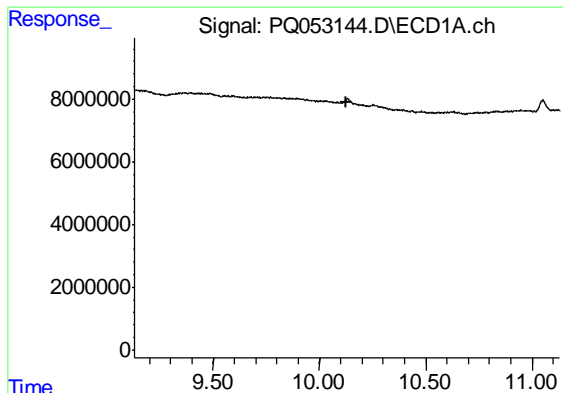
#32 AR-1260-2

R.T.: 8.509 min
 Delta R.T.: 0.011 min
 Response: 3490305
 Conc: 2.51 ng/ml



#32 AR-1260-2

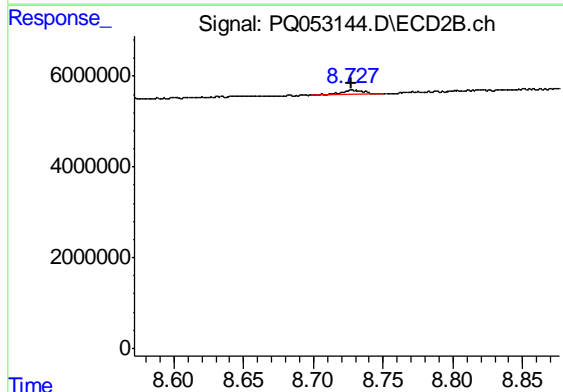
R.T.: 7.287 min
 Delta R.T.: 0.005 min
 Response: 1439087
 Conc: 1.55 ng/ml



#43 AR-1268-3

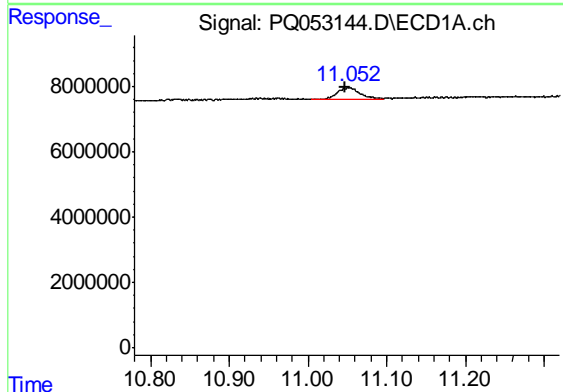
R.T.: 0.000 min
 Exp R.T. : 10.129 min
 Response: 0
 Conc: N.D.

Instrument :
 ECD_Q
 ClientSampleId :
 ABLK916



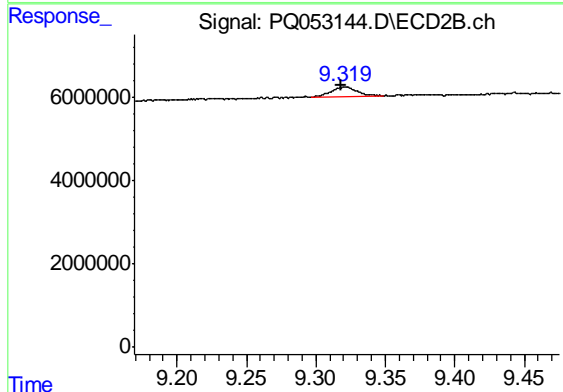
#43 AR-1268-3

R.T.: 8.727 min
 Delta R.T.: 0.000 min
 Response: 1310436
 Conc: 0.60 ng/ml



#45 AR-1268-5

R.T.: 11.052 min
 Delta R.T.: 0.005 min
 Response: 7072673
 Conc: 0.55 ng/ml



#45 AR-1268-5

R.T.: 9.320 min
 Delta R.T.: 0.003 min
 Response: 3020854
 Conc: 0.49 ng/ml