

Data Path : Z:\pestpcbsrv\HPCHEM1\ECD_Q\Data\PQ043021\
 Data File : PQ053311.D
 Signal(s) : Signal #1: ECD1A.ch Signal #2: ECD2B.ch
 Acq On : 30 Apr 2021 13:57
 Operator : DD\AJ
 Sample : M2192-04MS
 Misc :
 ALS Vial : 11 Sample Multiplier: 1

Instrument :
 ECD_Q
 ClientSampled :

Integration File signal 1: autoint1.e
 Integration File signal 2: autoint2.e
 Quant Time: May 01 04:26:30 2021
 Quant Method : Z:\pestpcbsrv\HPCHEM1\ECD_Q\Method\PQ042021CLP.M
 Quant Title : GC EXTRACTABLES
 QLast Update : Wed Apr 21 07:47:07 2021
 Response via : Initial Calibration
 Integrator: ChemStation

Volume Inj. : 1 µl
 Signal #1 Phase : ZB MR1 Signal #2 Phase: ZB MR2
 Signal #1 Info : 30Mx0.32mmx 0.5µm Signal #2 Info : 30M x 0.32mm x 0.25µm

Compound	RT#1	RT#2	Resp#1	Resp#2	ng/ml	ng/ml
System Monitoring Compounds						
1) SA Tetrachlo...	5.221	4.238	341.3E6	145.7E6	12.162	12.533
2) SA Decachlor...	11.413	9.577	644.7E6	233.5E6	22.797	18.760
Target Compounds						
3) L1 AR-1016-1	6.545	5.495	387.4E6	122.7E6	397.571	278.664 #
4) L1 AR-1016-2	6.570	5.515	586.0E6	175.4E6	403.017	277.293 #
5) L1 AR-1016-3	6.636	5.707	447.3E6	106.2E6	508.816	321.896 #
6) L1 AR-1016-4	6.744	5.758	323.7E6	82466150	446.907	316.369 #
7) L1 AR-1016-5	7.058	5.989	220.3E6	111.2E6	318.991	334.580
8) L2 AR-1221-1	5.480	4.493	144.3E6	29585866	474.453	232.005 #
9) L2 AR-1221-2	5.571	4.592	37097013	31216900	179.785	351.323 #
10) L2 AR-1221-3	5.659	4.682	167.4E6	86672225	241.144	280.660
11) L3 AR-1232-1	5.659	4.682	167.4E6	86672225	322.329	379.683
12) L3 AR-1232-2	6.251	5.515	427.9E6	175.4E6	1528.049	718.071 #
13) L3 AR-1232-3	6.570	5.707	586.0E6	106.2E6	1022.155	867.958
14) L3 AR-1232-4	6.744	5.803	323.7E6	93118016	1131.921	889.379
15) L3 AR-1232-5	6.840	5.989	169.6E6	111.2E6	831.355	947.977
16) L4 AR-1242-1	6.545	5.495	387.4E6	122.7E6	427.177	306.176 #
17) L4 AR-1242-2	6.570	5.515	586.0E6	175.4E6	431.495	300.778 #
18) L4 AR-1242-3	6.636	5.707	447.3E6	106.2E6	542.059	350.407 #
19) L4 AR-1242-4	6.744	5.803	323.7E6	93118016	472.541	327.362 #
20) L4 AR-1242-5	7.527	6.369	49358658	62468990	67.660	157.681 #
21) L5 AR-1248-1	6.545	5.495	387.4E6	122.7E6	625.999	450.577 #
22) L5 AR-1248-2	6.840	5.758	169.6E6	82466150	194.511	221.788
23) L5 AR-1248-3	7.058	5.803	220.3E6	93118016	224.768	243.894
24) L5 AR-1248-4	7.488	5.989	41285222	111.2E6	36.129	237.847 #
25) L5 AR-1248-5	7.527	6.413	49358658	15947885	43.311	32.411 #
26) L6 AR-1254-1	7.456	6.369	173.3E6	62468990	110.260	58.261 #
27) L6 AR-1254-2	7.683	6.526	197.8E6	80395529	80.798	84.286
28) L6 AR-1254-3	8.069	6.965	81577923	132.5E6	30.999	85.553 #
29) L6 AR-1254-4	8.362	7.185	66706854	18593426	34.661	17.757 #
30) L6 AR-1254-5	8.792	7.614	607.1E6	283.5E6	296.788	194.290 #
31) L7 AR-1260-1	8.234	7.084	379.0E6	185.7E6	329.211	286.630
32) L7 AR-1260-2	8.497	7.280	479.9E6	283.3E6	344.433	305.606
33) L7 AR-1260-3	8.864	7.436	311.1E6	212.2E6	290.543	272.730
34) L7 AR-1260-4	9.108	7.919	390.8E6	161.6E6	322.764	238.050 #
35) L7 AR-1260-5	9.453	8.165	821.0E6	479.2E6	320.869	259.004
36) L8 AR-1262-1	8.864	7.614	311.1E6	283.5E6	155.535	462.500 #
37) L8 AR-1262-2	9.453	8.165	821.0E6	479.2E6	221.236	188.575
38) L8 AR-1262-3	9.788	8.452	148.6E6	88087875	59.205	86.710 #
39) L8 AR-1262-4	9.867	8.515	303.5E6	307.3E6	151.838	178.373
40) L8 AR-1262-5	10.603	9.019	214.3E6	95241095	151.160	122.358
41) L9 AR-1268-1	9.788	8.452	148.6E6	88087875	33.395	30.077

Data Path : Z:\pestpcbsrv\HPCHEM1\ECD_Q\Data\PQ043021\
 Data File : PQ053311.D
 Signal(s) : Signal #1: ECD1A.ch Signal #2: ECD2B.ch
 Acq On : 30 Apr 2021 13:57
 Operator : DD\AJ
 Sample : M2192-04MS
 Misc :
 ALS Vial : 11 Sample Multiplier: 1

Instrument :
 ECD_Q
 ClientSampleId :

Integration File signal 1: autoint1.e
 Integration File signal 2: autoint2.e
 Quant Time: May 01 04:26:30 2021
 Quant Method : Z:\pestpcbsrv\HPCHEM1\ECD_Q\Method\PQ042021CLP.M
 Quant Title : GC EXTRACTABLES
 QLast Update : Wed Apr 21 07:47:07 2021
 Response via : Initial Calibration
 Integrator: ChemStation

Volume Inj. : 1 µl
 Signal #1 Phase : ZB MR1 Signal #2 Phase: ZB MR2
 Signal #1 Info : 30Mx0.32mmx 0.5µm Signal #2 Info : 30M x 0.32mm x 0.25µm

	Compound	RT#1	RT#2	Resp#1	Resp#2	ng/ml	ng/ml
42)	L9 AR-1268-2	9.867	8.515	303.5E6	307.3E6	70.776	123.427 #
43)	L9 AR-1268-3	10.133	8.726	23502507	11474006	6.181	5.293
44)	L9 AR-1268-4	10.603	9.019	214.3E6	95241095	139.180	111.651
45)	L9 AR-1268-5	11.049	9.318	106.0E6	28431741	8.231	4.585 #

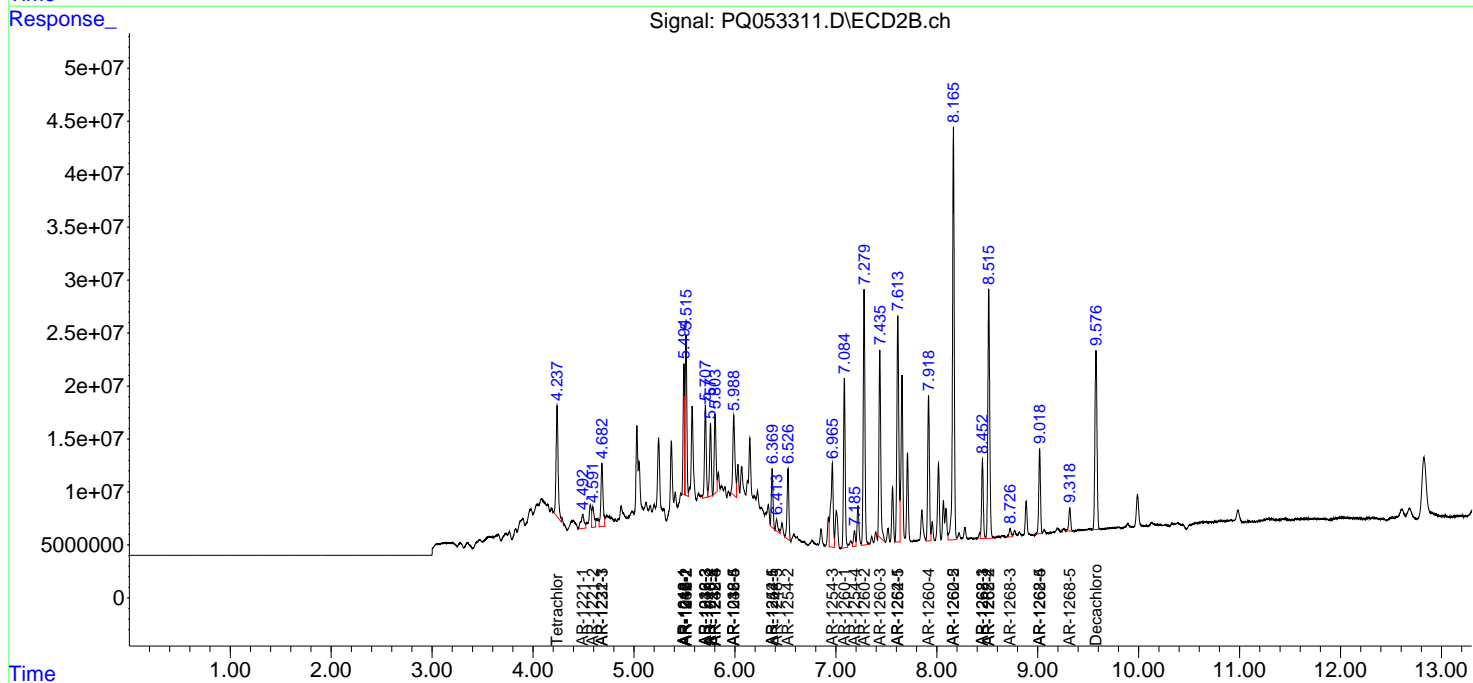
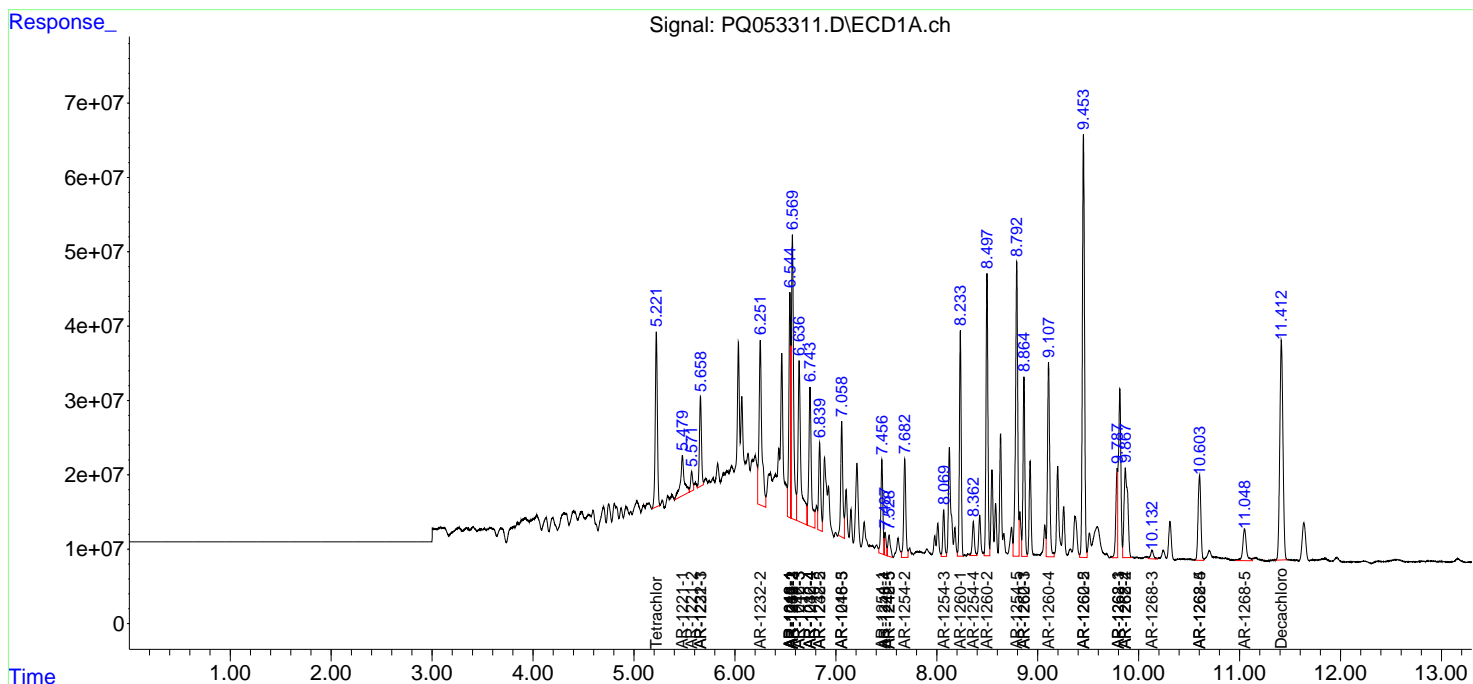
(f)=RT Delta > 1/2 Window (#)=Amounts differ by > 25% (m)=manual int.

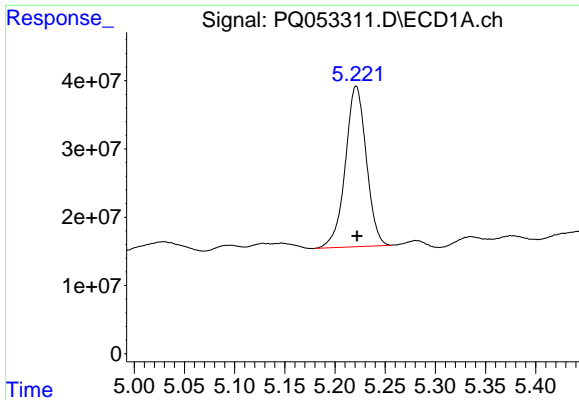
Data Path : Z:\pestpcbsrv\HPCHEM1\ECD_Q\Data\PQ043021\
 Data File : PQ053311.D
 Signal(s) : Signal #1: ECD1A.ch Signal #2: ECD2B.ch
 Acq On : 30 Apr 2021 13:57
 Operator : DD\AJ
 Sample : M2192-04MS
 Misc :
 ALS Vial : 11 Sample Multiplier: 1

Instrument :
 ECD_Q
 ClientSampled :

Integration File signal 1: autoint1.e
 Integration File signal 2: autoint2.e
 Quant Time: May 01 04:26:30 2021
 Quant Method : Z:\pestpcbsrv\HPCHEM1\ECD_Q\Method\PQ042021CLP.M
 Quant Title : GC EXTRACTABLES
 QLast Update : Wed Apr 21 07:47:07 2021
 Response via : Initial Calibration
 Integrator: ChemStation

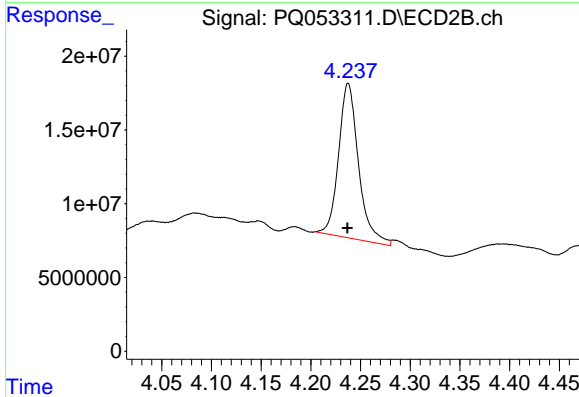
Volume Inj. : 1 µl
 Signal #1 Phase : ZB MR1 Signal #2 Phase: ZB MR2
 Signal #1 Info : 30Mx0.32mmx 0.5µm Signal #2 Info : 30M x 0.32mm x 0.25µm



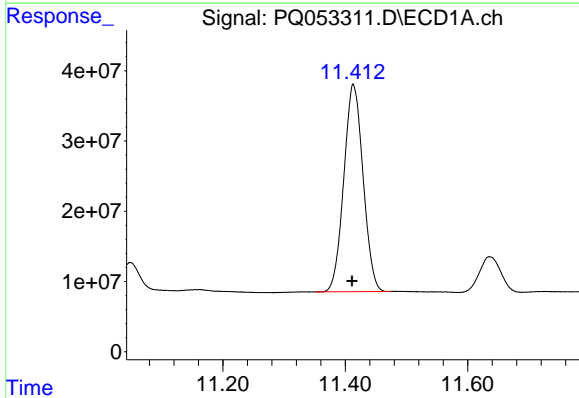


#1 Tetrachloro-m-xylene
 R.T.: 5.221 min
 Delta R.T.: 0.000 min
 Response: 341262400
 Conc: 12.16 ng/ml

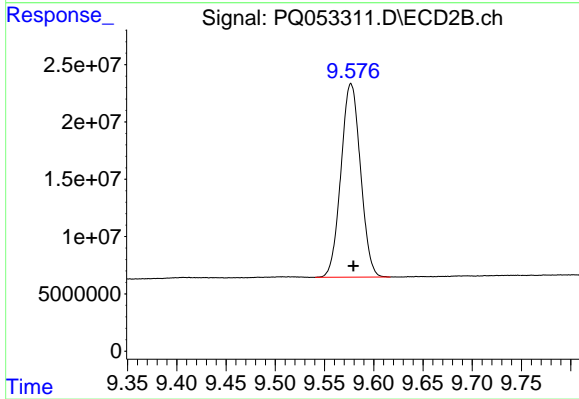
Instrument :
 ECD_Q
 ClientSampleId :



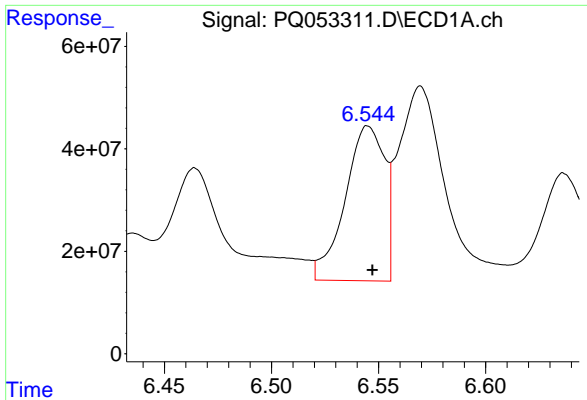
#1 Tetrachloro-m-xylene
 R.T.: 4.238 min
 Delta R.T.: 0.000 min
 Response: 145744316
 Conc: 12.53 ng/ml



#2 Decachlorobiphenyl
 R.T.: 11.413 min
 Delta R.T.: 0.002 min
 Response: 644735556
 Conc: 22.80 ng/ml



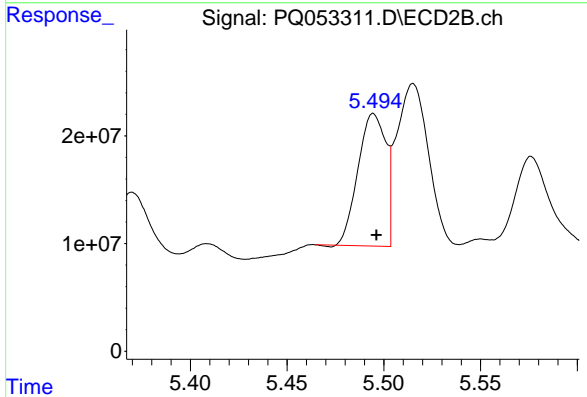
#2 Decachlorobiphenyl
 R.T.: 9.577 min
 Delta R.T.: -0.002 min
 Response: 233493028
 Conc: 18.76 ng/ml



#3 AR-1016-1

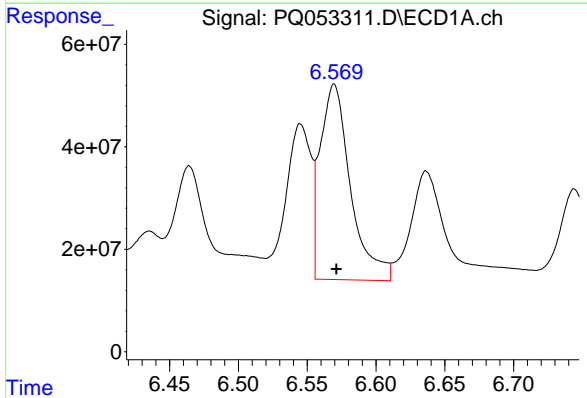
R.T.: 6.545 min
 Delta R.T.: -0.002 min
 Response: 387353654
 Conc: 397.57 ng/ml

Instrument :
 ECD_Q
 ClientSampleId :



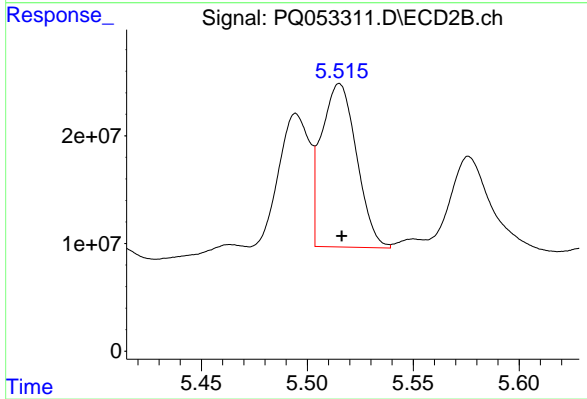
#3 AR-1016-1

R.T.: 5.495 min
 Delta R.T.: -0.002 min
 Response: 122725203
 Conc: 278.66 ng/ml



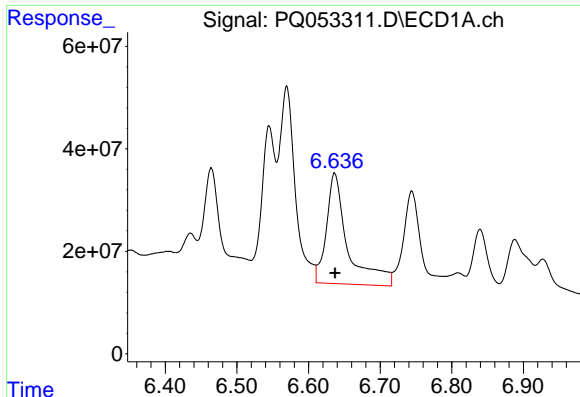
#4 AR-1016-2

R.T.: 6.570 min
 Delta R.T.: -0.002 min
 Response: 586027029
 Conc: 403.02 ng/ml



#4 AR-1016-2

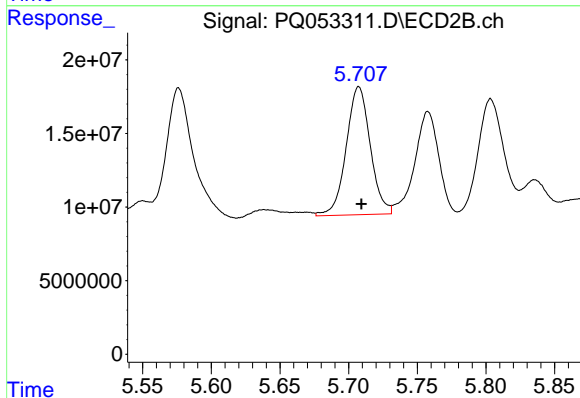
R.T.: 5.515 min
 Delta R.T.: -0.001 min
 Response: 175437584
 Conc: 277.29 ng/ml



#5 AR-1016-3

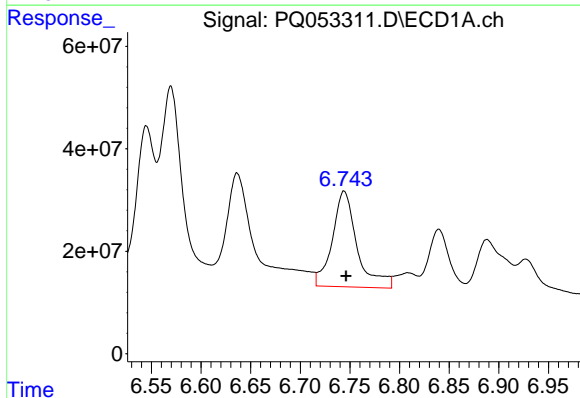
R.T.: 6.636 min
 Delta R.T.: 0.000 min
 Response: 447331318
 Conc: 508.82 ng/ml

Instrument :
 ECD_Q
 ClientSampleId :



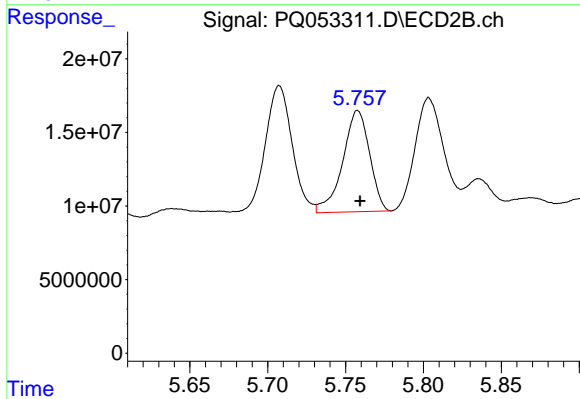
#5 AR-1016-3

R.T.: 5.707 min
 Delta R.T.: -0.002 min
 Response: 106152354
 Conc: 321.90 ng/ml



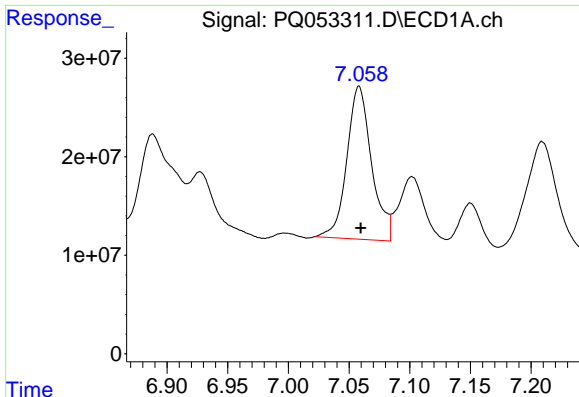
#6 AR-1016-4

R.T.: 6.744 min
 Delta R.T.: -0.002 min
 Response: 323740975
 Conc: 446.91 ng/ml



#6 AR-1016-4

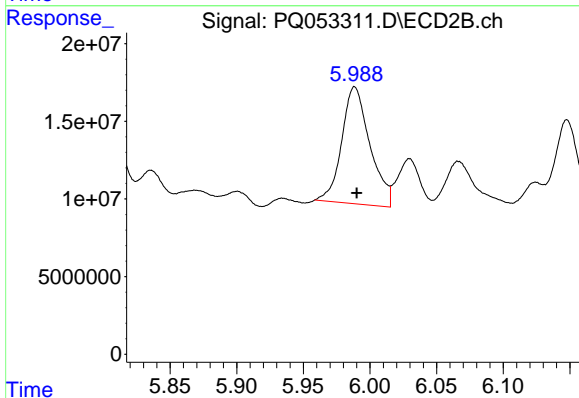
R.T.: 5.758 min
 Delta R.T.: -0.001 min
 Response: 82466150
 Conc: 316.37 ng/ml



#7 AR-1016-5

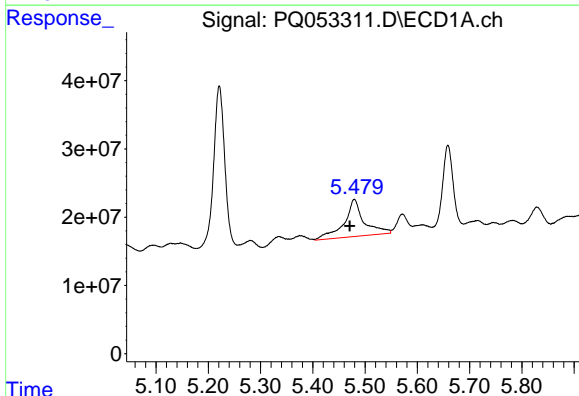
R.T.: 7.058 min
Delta R.T.: -0.002 min
Response: 220324749
Conc: 318.99 ng/ml

Instrument :
ECD_Q
ClientSampled :



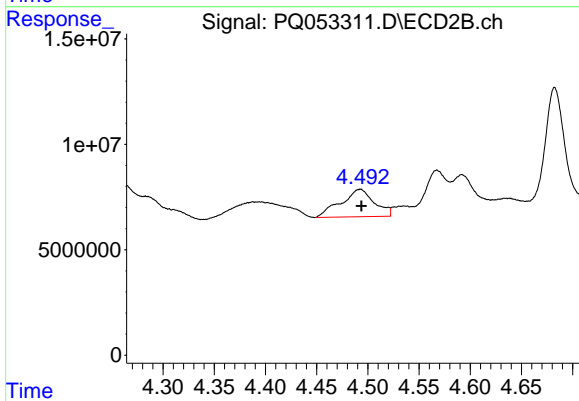
#7 AR-1016-5

R.T.: 5.989 min
Delta R.T.: -0.002 min
Response: 111191248
Conc: 334.58 ng/ml



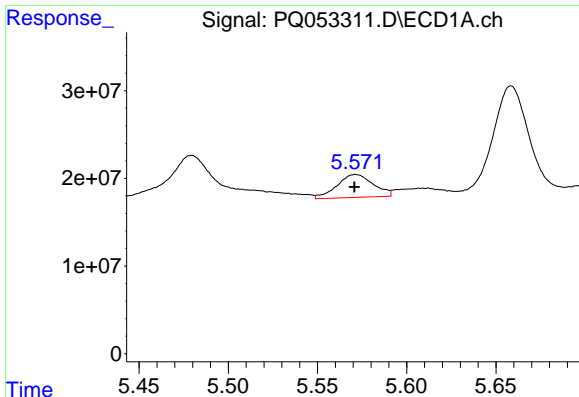
#8 AR-1221-1

R.T.: 5.480 min
Delta R.T.: 0.009 min
Response: 144296681
Conc: 474.45 ng/ml



#8 AR-1221-1

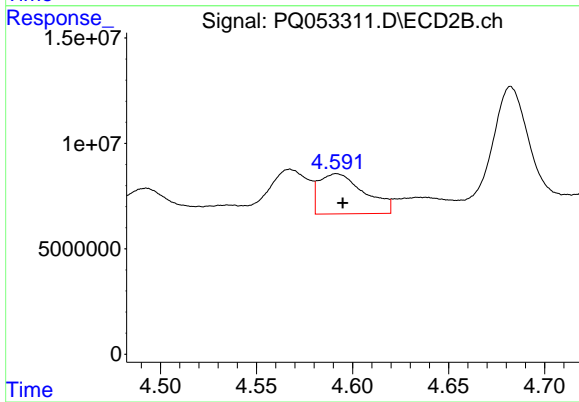
R.T.: 4.493 min
Delta R.T.: 0.000 min
Response: 29585866
Conc: 232.01 ng/ml



#9 AR-1221-2

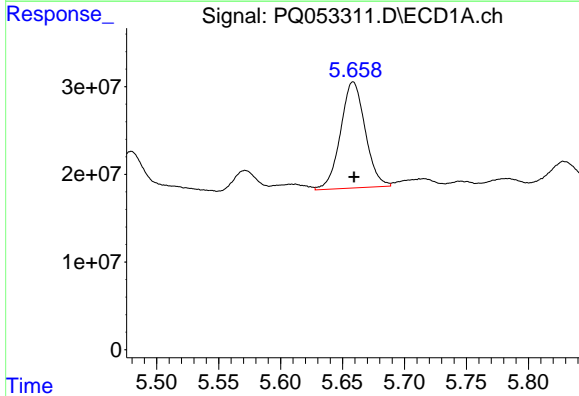
R.T.: 5.571 min
 Delta R.T.: 0.000 min
 Response: 37097013
 Conc: 179.78 ng/ml

Instrument :
 ECD_Q
 ClientSampled :



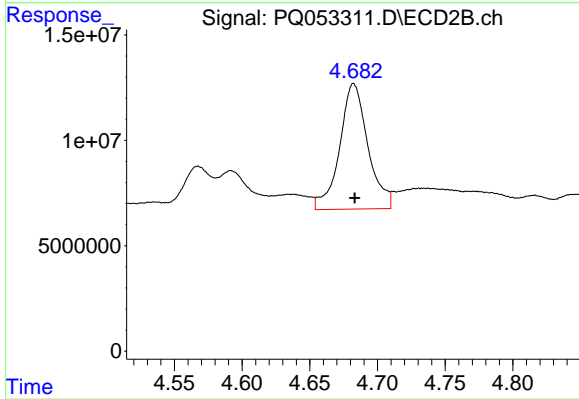
#9 AR-1221-2

R.T.: 4.592 min
 Delta R.T.: -0.003 min
 Response: 31216900
 Conc: 351.32 ng/ml



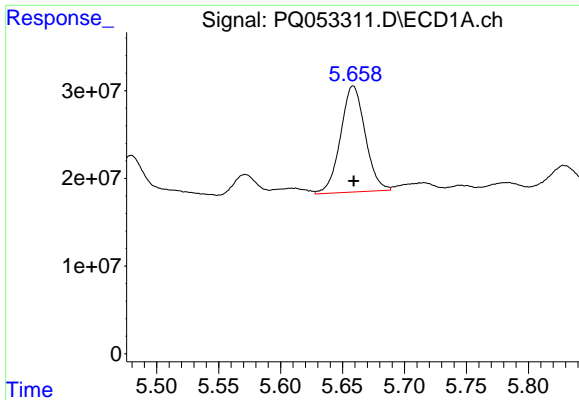
#10 AR-1221-3

R.T.: 5.659 min
 Delta R.T.: 0.000 min
 Response: 167393044
 Conc: 241.14 ng/ml



#10 AR-1221-3

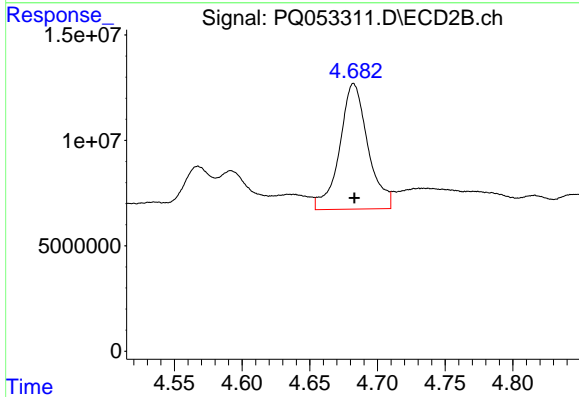
R.T.: 4.682 min
 Delta R.T.: 0.000 min
 Response: 86672225
 Conc: 280.66 ng/ml



#11 AR-1232-1

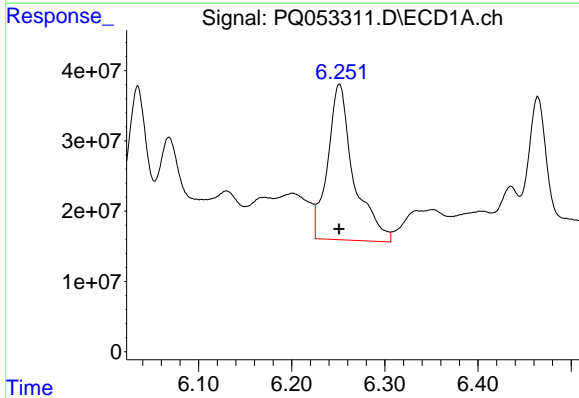
R.T.: 5.659 min
 Delta R.T.: 0.000 min
 Response: 167393044
 Conc: 322.33 ng/ml

Instrument :
 ECD_Q
 ClientSampleId :



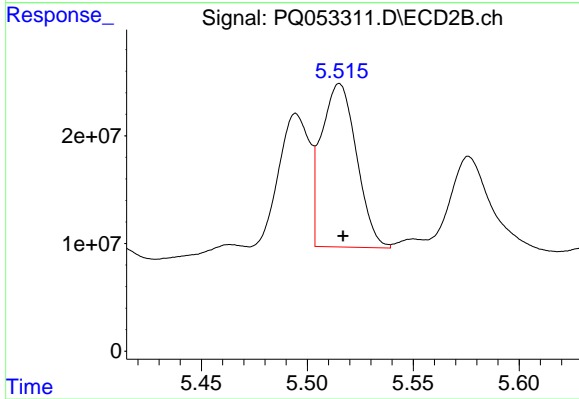
#11 AR-1232-1

R.T.: 4.682 min
 Delta R.T.: 0.000 min
 Response: 86672225
 Conc: 379.68 ng/ml



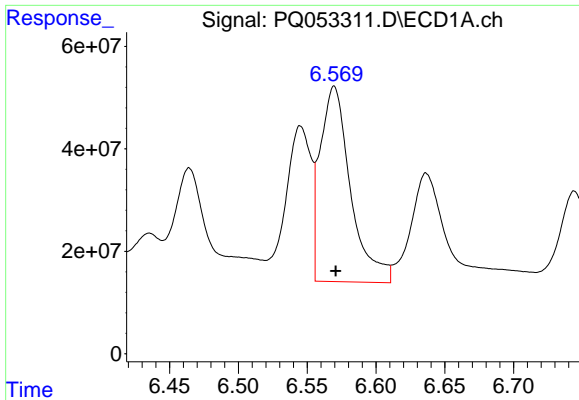
#12 AR-1232-2

R.T.: 6.251 min
 Delta R.T.: 0.000 min
 Response: 427874726
 Conc: 1528.05 ng/ml



#12 AR-1232-2

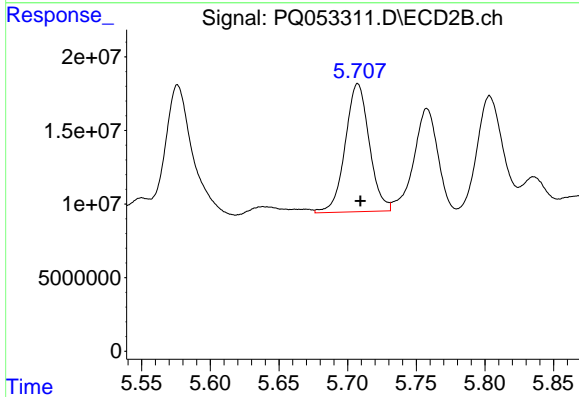
R.T.: 5.515 min
 Delta R.T.: -0.002 min
 Response: 175437584
 Conc: 718.07 ng/ml



#13 AR-1232-3

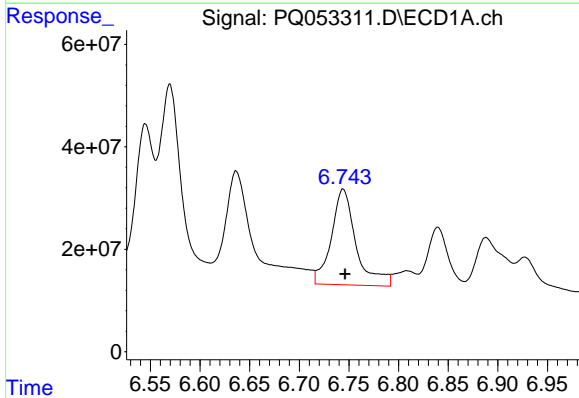
R.T.: 6.570 min
 Delta R.T.: -0.001 min
 Response: 586027029
 Conc: 1022.15 ng/ml

Instrument :
 ECD_Q
 ClientSampleId :



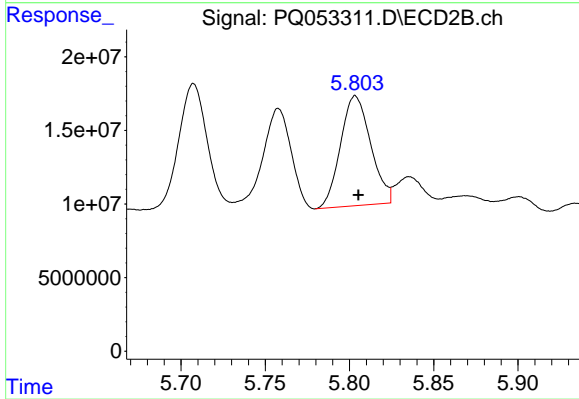
#13 AR-1232-3

R.T.: 5.707 min
 Delta R.T.: -0.002 min
 Response: 106152354
 Conc: 867.96 ng/ml



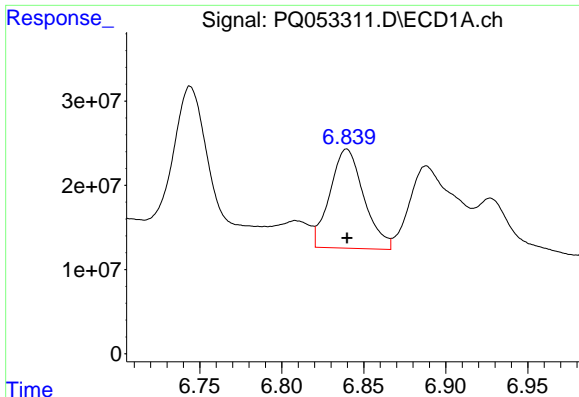
#14 AR-1232-4

R.T.: 6.744 min
 Delta R.T.: -0.002 min
 Response: 323740975
 Conc: 1131.92 ng/ml



#14 AR-1232-4

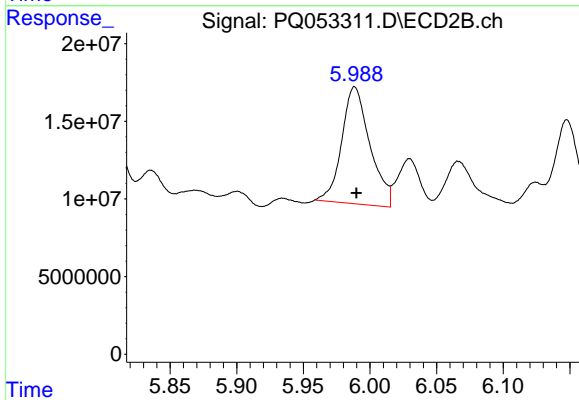
R.T.: 5.803 min
 Delta R.T.: -0.002 min
 Response: 93118016
 Conc: 889.38 ng/ml



#15 AR-1232-5

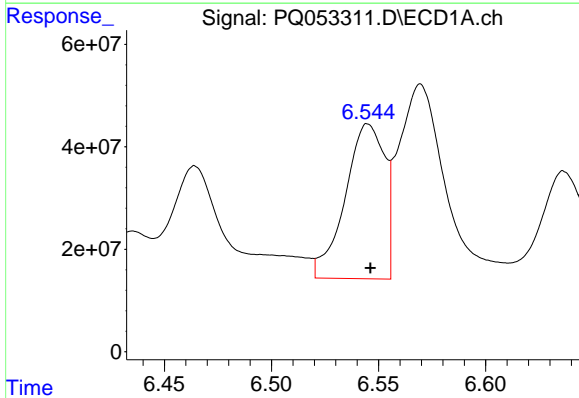
R.T.: 6.840 min
 Delta R.T.: 0.000 min
 Response: 169648511
 Conc: 831.36 ng/ml

Instrument :
 ECD_Q
 ClientSampleId :



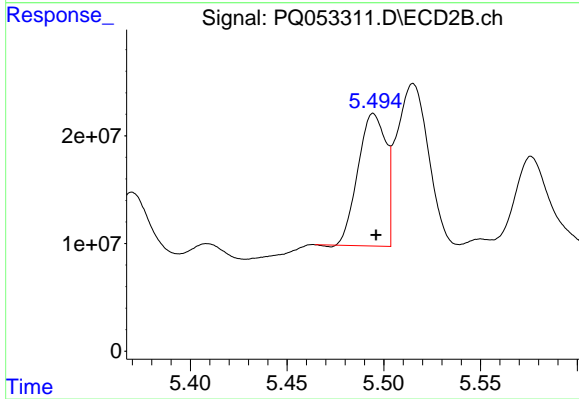
#15 AR-1232-5

R.T.: 5.989 min
 Delta R.T.: -0.001 min
 Response: 111191248
 Conc: 947.98 ng/ml



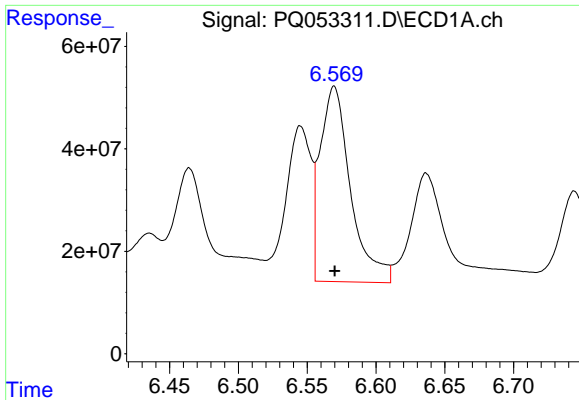
#16 AR-1242-1

R.T.: 6.545 min
 Delta R.T.: -0.001 min
 Response: 387353654
 Conc: 427.18 ng/ml



#16 AR-1242-1

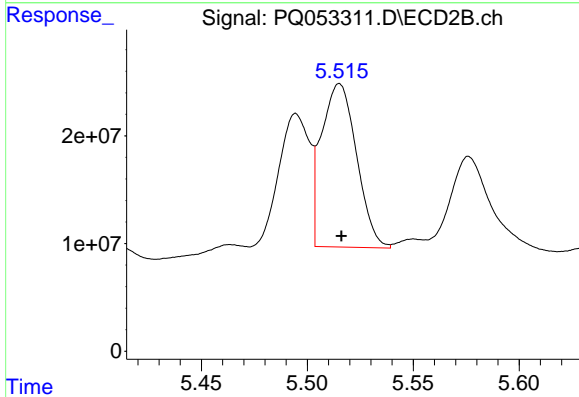
R.T.: 5.495 min
 Delta R.T.: -0.001 min
 Response: 122725203
 Conc: 306.18 ng/ml



#17 AR-1242-2

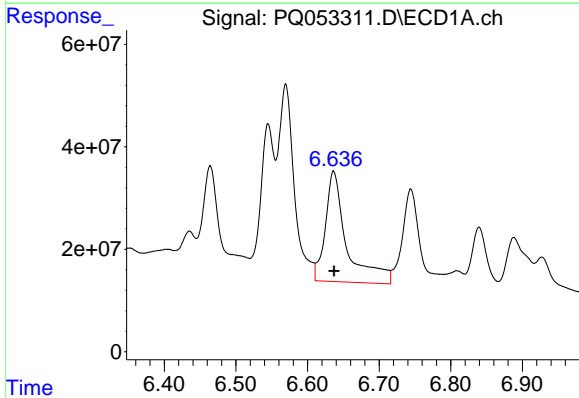
R.T.: 6.570 min
 Delta R.T.: 0.000 min
 Response: 586027029
 Conc: 431.50 ng/ml

Instrument :
 ECD_Q
 ClientSampleId :



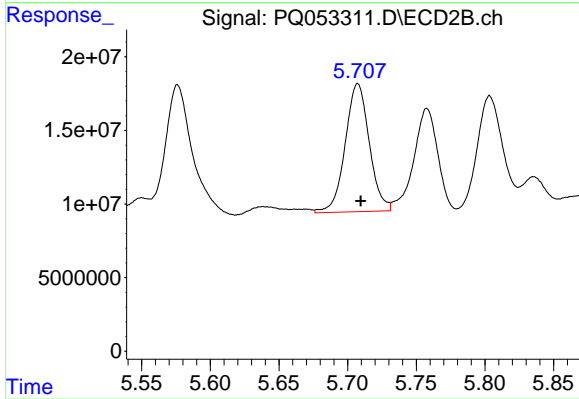
#17 AR-1242-2

R.T.: 5.515 min
 Delta R.T.: -0.001 min
 Response: 175437584
 Conc: 300.78 ng/ml



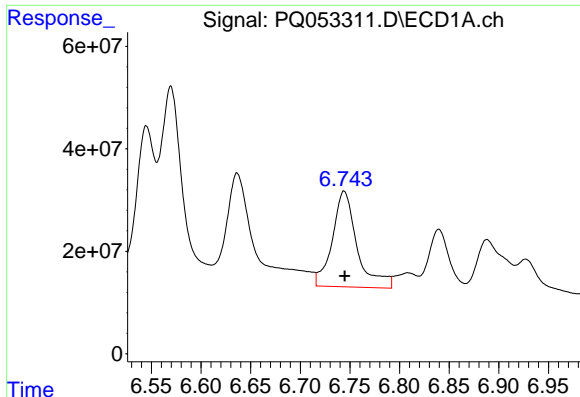
#18 AR-1242-3

R.T.: 6.636 min
 Delta R.T.: 0.000 min
 Response: 447331318
 Conc: 542.06 ng/ml



#18 AR-1242-3

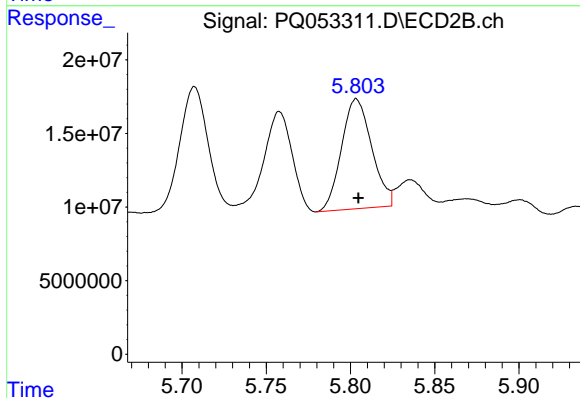
R.T.: 5.707 min
 Delta R.T.: -0.002 min
 Response: 106152354
 Conc: 350.41 ng/ml



#19 AR-1242-4

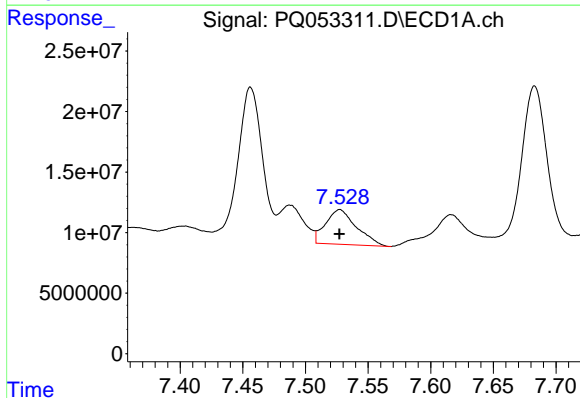
R.T.: 6.744 min
 Delta R.T.: 0.000 min
 Response: 323740975
 Conc: 472.54 ng/ml

Instrument :
 ECD_Q
 ClientSampled :



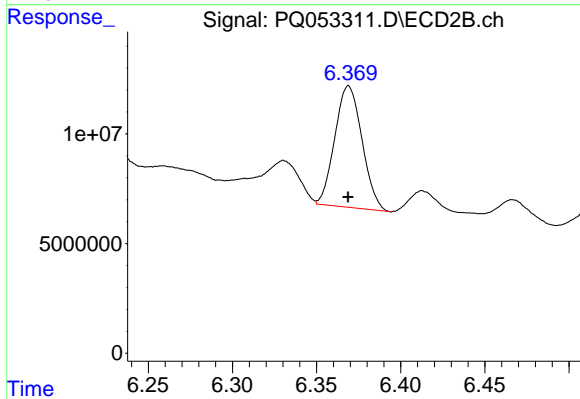
#19 AR-1242-4

R.T.: 5.803 min
 Delta R.T.: -0.001 min
 Response: 93118016
 Conc: 327.36 ng/ml



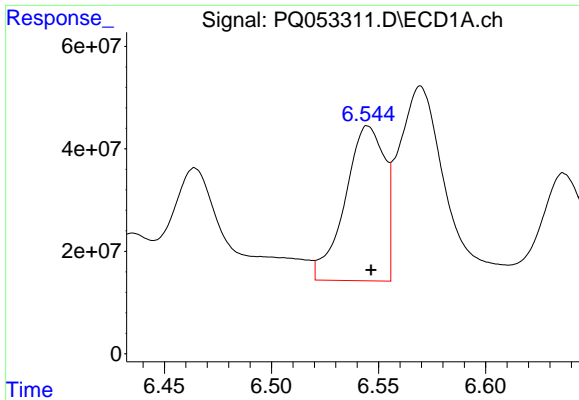
#20 AR-1242-5

R.T.: 7.527 min
 Delta R.T.: 0.000 min
 Response: 49358658
 Conc: 67.66 ng/ml



#20 AR-1242-5

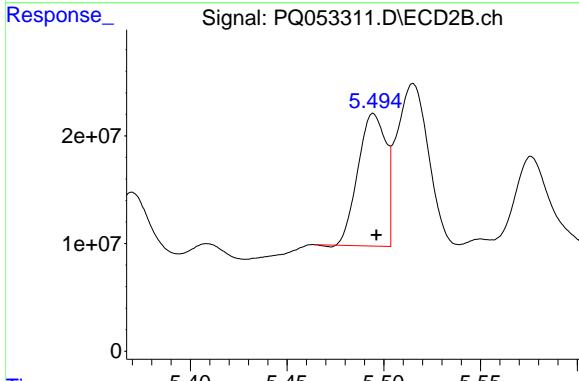
R.T.: 6.369 min
 Delta R.T.: 0.000 min
 Response: 62468990
 Conc: 157.68 ng/ml



#21 AR-1248-1

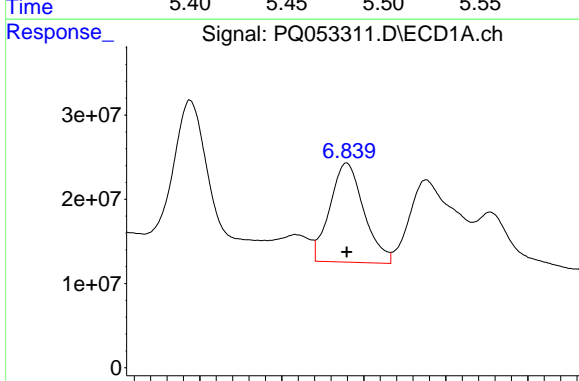
R.T.: 6.545 min
 Delta R.T.: -0.001 min
 Response: 387353654
 Conc: 626.00 ng/ml

Instrument :
 ECD_Q
 ClientSampleId :



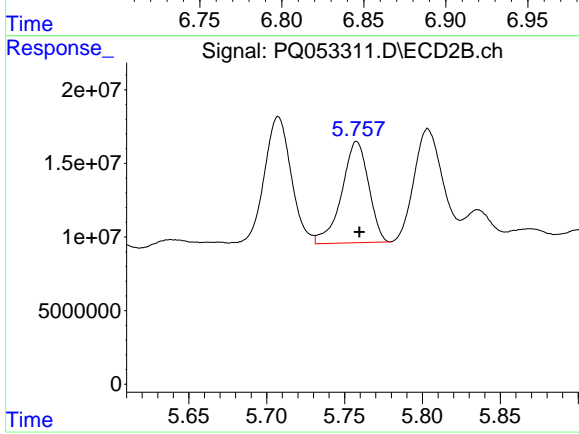
#21 AR-1248-1

R.T.: 5.495 min
 Delta R.T.: -0.001 min
 Response: 122725203
 Conc: 450.58 ng/ml



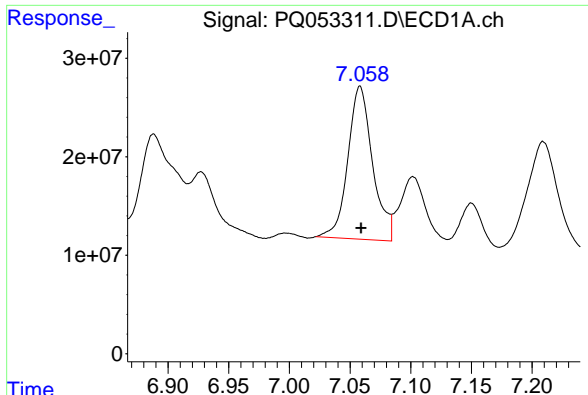
#22 AR-1248-2

R.T.: 6.840 min
 Delta R.T.: 0.000 min
 Response: 169648511
 Conc: 194.51 ng/ml



#22 AR-1248-2

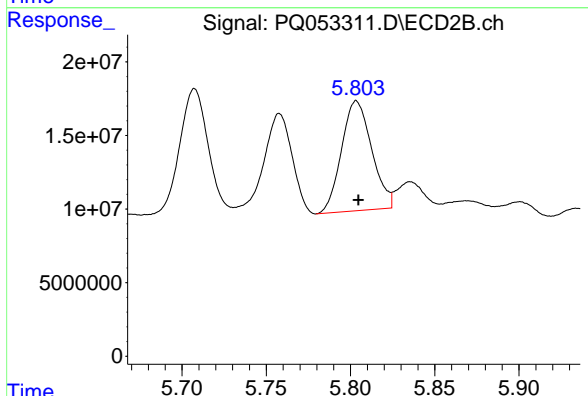
R.T.: 5.758 min
 Delta R.T.: -0.002 min
 Response: 82466150
 Conc: 221.79 ng/ml



#23 AR-1248-3

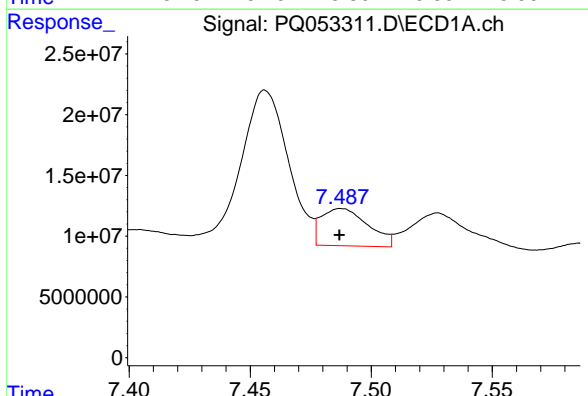
R.T.: 7.058 min
 Delta R.T.: 0.000 min
 Response: 220324749
 Conc: 224.77 ng/ml

Instrument :
 ECD_Q
 ClientSampled :



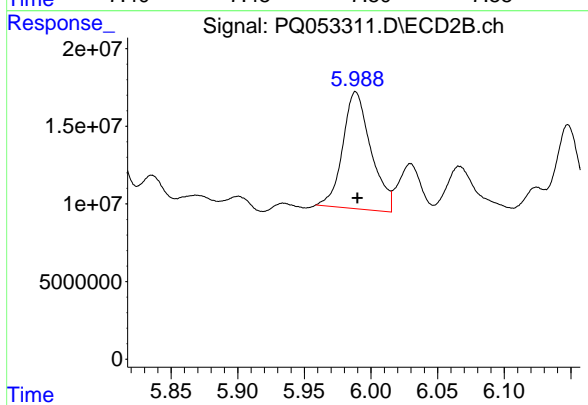
#23 AR-1248-3

R.T.: 5.803 min
 Delta R.T.: -0.001 min
 Response: 93118016
 Conc: 243.89 ng/ml



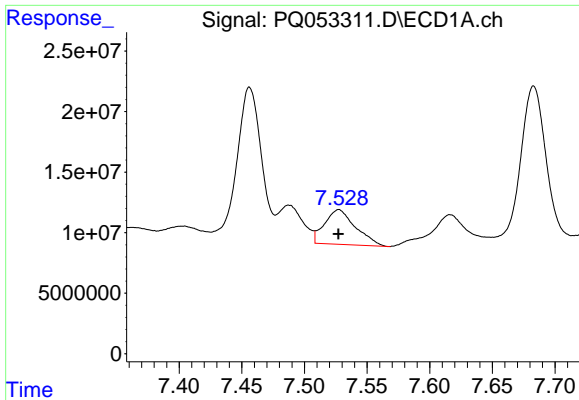
#24 AR-1248-4

R.T.: 7.488 min
 Delta R.T.: 0.000 min
 Response: 41285222
 Conc: 36.13 ng/ml



#24 AR-1248-4

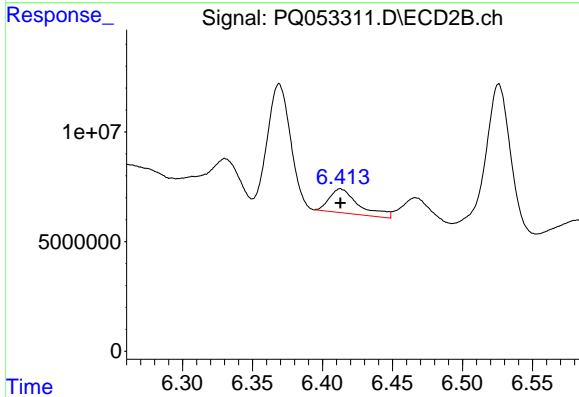
R.T.: 5.989 min
 Delta R.T.: -0.001 min
 Response: 111191248
 Conc: 237.85 ng/ml



#25 AR-1248-5

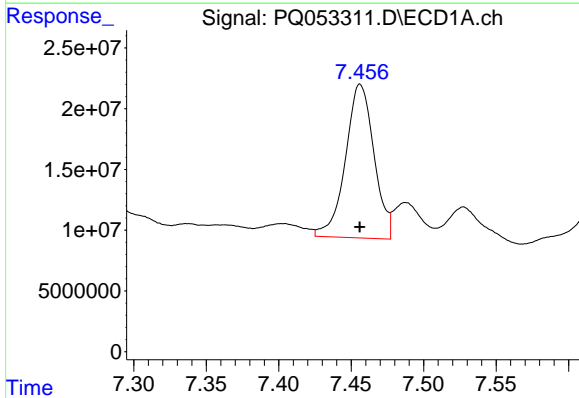
R.T.: 7.527 min
 Delta R.T.: 0.000 min
 Response: 49358658
 Conc: 43.31 ng/ml

Instrument :
 ECD_Q
 ClientSampleId :



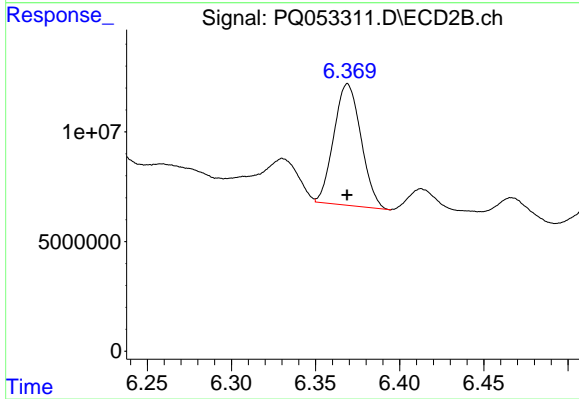
#25 AR-1248-5

R.T.: 6.413 min
 Delta R.T.: 0.000 min
 Response: 15947885
 Conc: 32.41 ng/ml



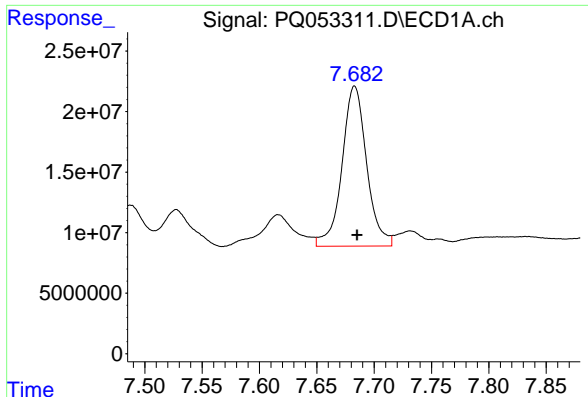
#26 AR-1254-1

R.T.: 7.456 min
 Delta R.T.: 0.000 min
 Response: 173335379
 Conc: 110.26 ng/ml



#26 AR-1254-1

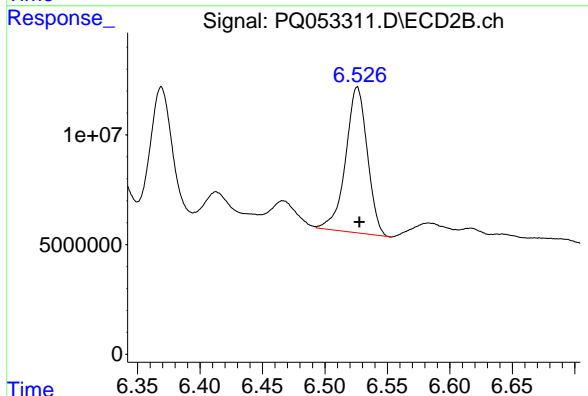
R.T.: 6.369 min
 Delta R.T.: 0.000 min
 Response: 62468990
 Conc: 58.26 ng/ml



#27 AR-1254-2

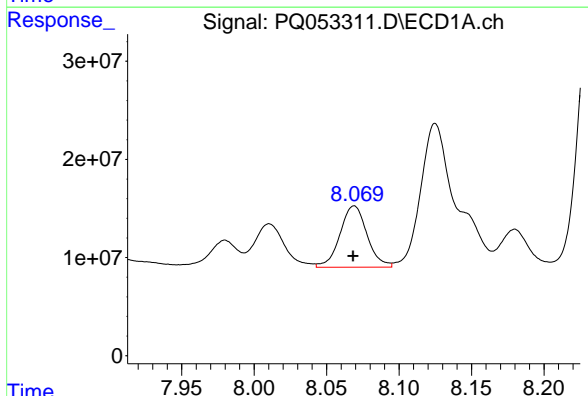
R.T.: 7.683 min
Delta R.T.: -0.002 min
Response: 197814406
Conc: 80.80 ng/ml

Instrument :
ECD_Q
ClientSampled :



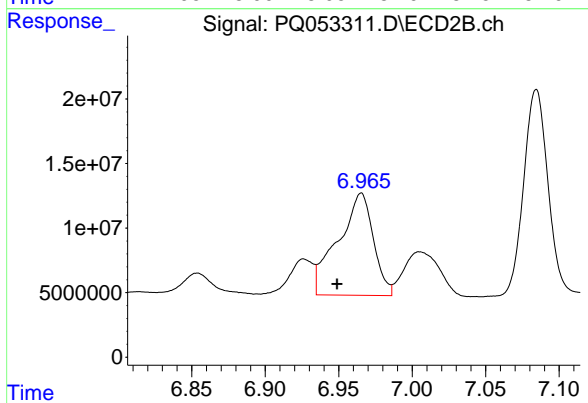
#27 AR-1254-2

R.T.: 6.526 min
Delta R.T.: -0.002 min
Response: 80395529
Conc: 84.29 ng/ml



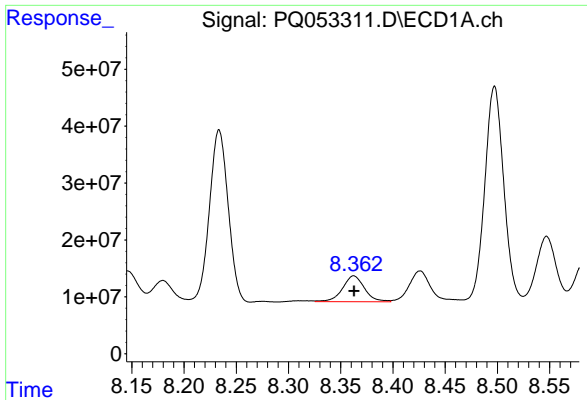
#28 AR-1254-3

R.T.: 8.069 min
Delta R.T.: 0.000 min
Response: 81577923
Conc: 31.00 ng/ml



#28 AR-1254-3

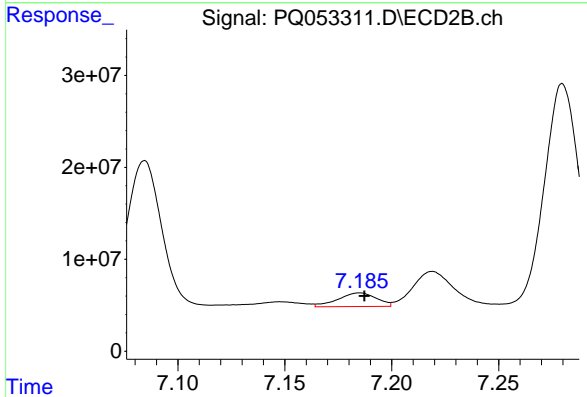
R.T.: 6.965 min
Delta R.T.: 0.016 min
Response: 132507850
Conc: 85.55 ng/ml



#29 AR-1254-4

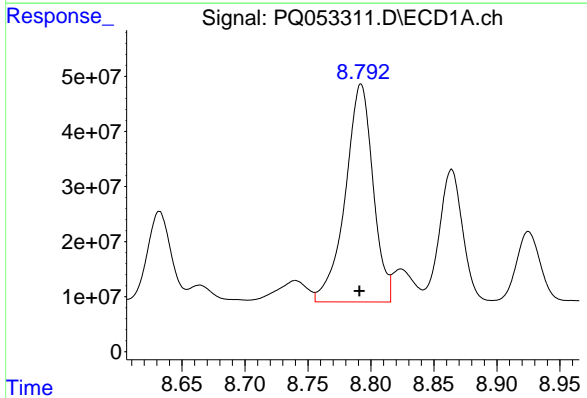
R.T.: 8.362 min
 Delta R.T.: 0.000 min
 Response: 66706854
 Conc: 34.66 ng/ml

Instrument :
 ECD_Q
 ClientSampled :



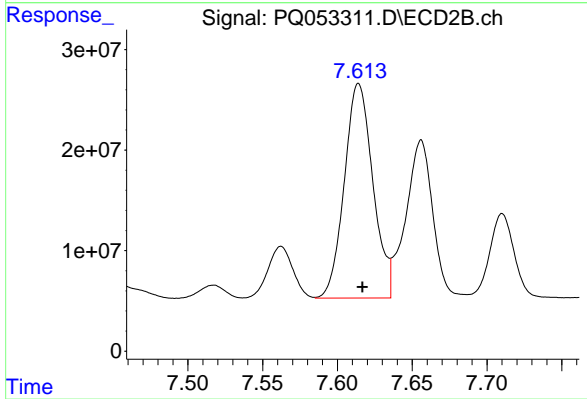
#29 AR-1254-4

R.T.: 7.185 min
 Delta R.T.: -0.002 min
 Response: 18593426
 Conc: 17.76 ng/ml



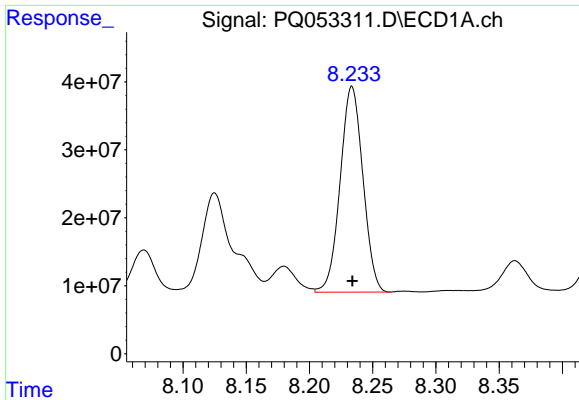
#30 AR-1254-5

R.T.: 8.792 min
 Delta R.T.: 0.001 min
 Response: 607126902
 Conc: 296.79 ng/ml



#30 AR-1254-5

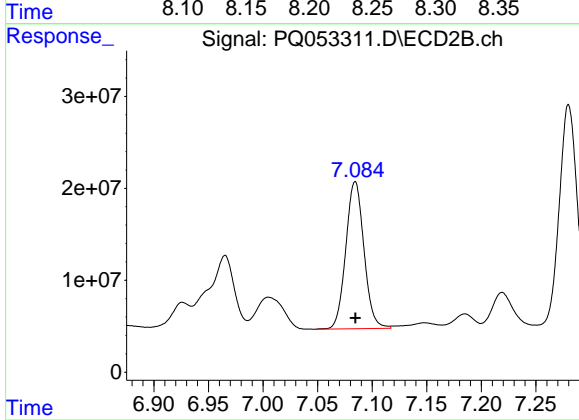
R.T.: 7.614 min
 Delta R.T.: -0.003 min
 Response: 283510589
 Conc: 194.29 ng/ml



#31 AR-1260-1

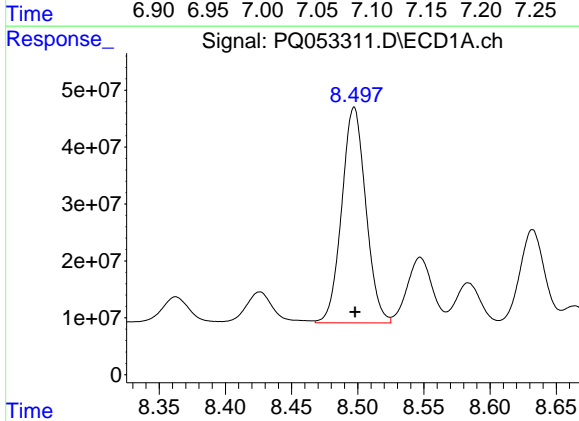
R.T.: 8.234 min
 Delta R.T.: 0.000 min
 Response: 379018040
 Conc: 329.21 ng/ml

Instrument :
 ECD_Q
 ClientSampled :



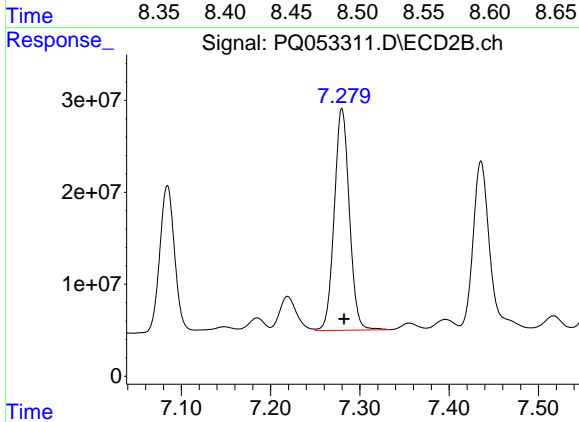
#31 AR-1260-1

R.T.: 7.084 min
 Delta R.T.: 0.000 min
 Response: 185745757
 Conc: 286.63 ng/ml



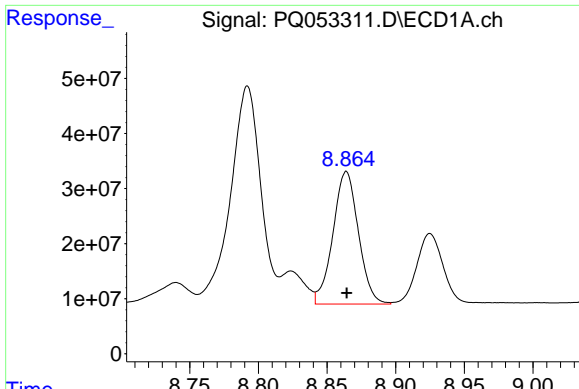
#32 AR-1260-2

R.T.: 8.497 min
 Delta R.T.: 0.000 min
 Response: 479893369
 Conc: 344.43 ng/ml



#32 AR-1260-2

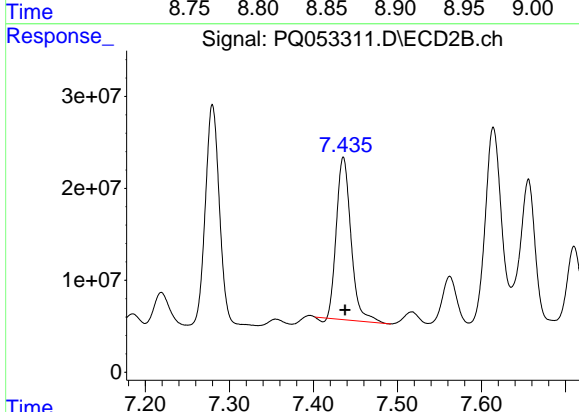
R.T.: 7.280 min
 Delta R.T.: -0.002 min
 Response: 283283523
 Conc: 305.61 ng/ml



#33 AR-1260-3

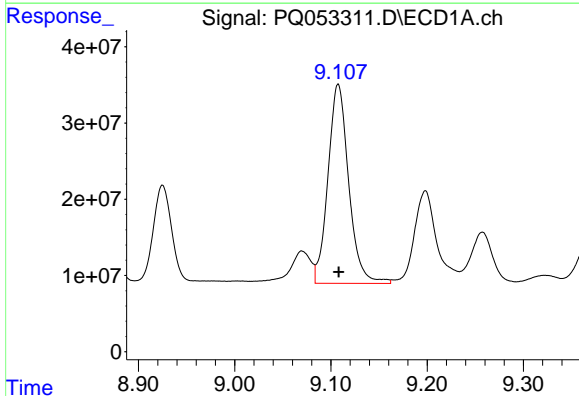
R.T.: 8.864 min
 Delta R.T.: 0.000 min
 Response: 311083317
 Conc: 290.54 ng/ml

Instrument :
 ECD_Q
 ClientSampleId :



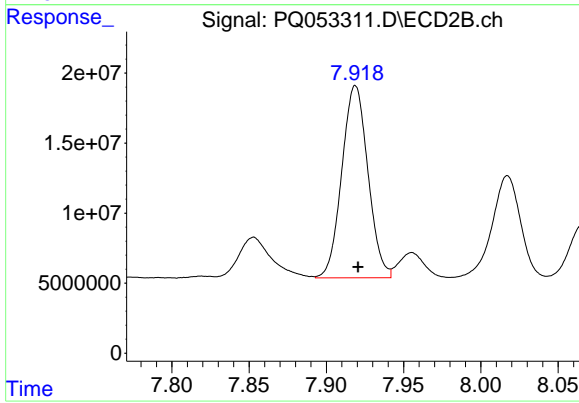
#33 AR-1260-3

R.T.: 7.436 min
 Delta R.T.: -0.002 min
 Response: 212213040
 Conc: 272.73 ng/ml



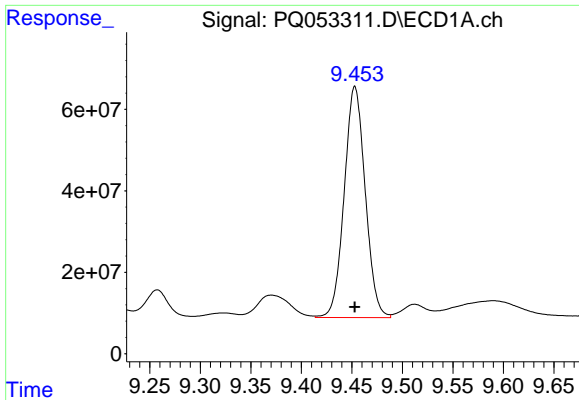
#34 AR-1260-4

R.T.: 9.108 min
 Delta R.T.: 0.000 min
 Response: 390832823
 Conc: 322.76 ng/ml



#34 AR-1260-4

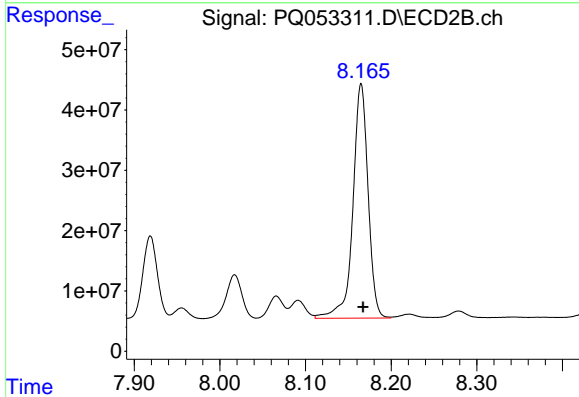
R.T.: 7.919 min
 Delta R.T.: -0.002 min
 Response: 161614141
 Conc: 238.05 ng/ml



#35 AR-1260-5

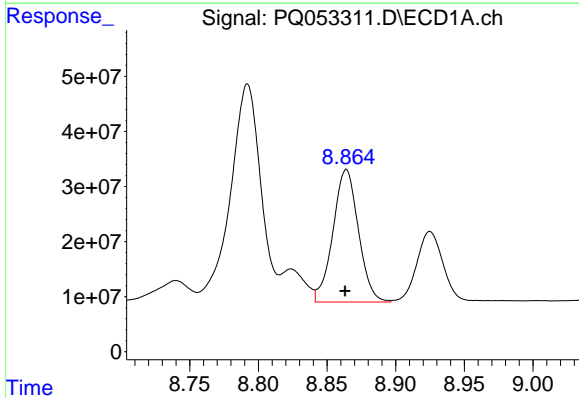
R.T.: 9.453 min
 Delta R.T.: 0.000 min
 Response: 821017597
 Conc: 320.87 ng/ml

Instrument :
 ECD_Q
 ClientSampleId :



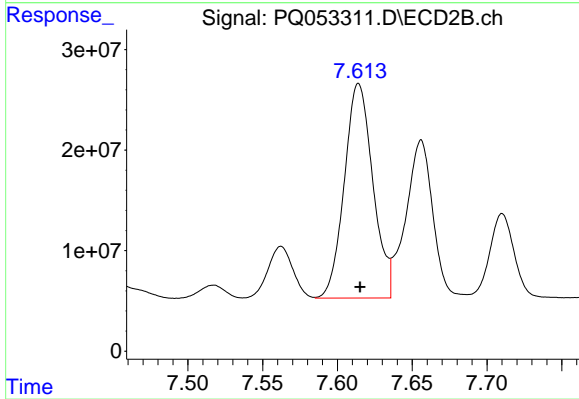
#35 AR-1260-5

R.T.: 8.165 min
 Delta R.T.: -0.002 min
 Response: 479177222
 Conc: 259.00 ng/ml



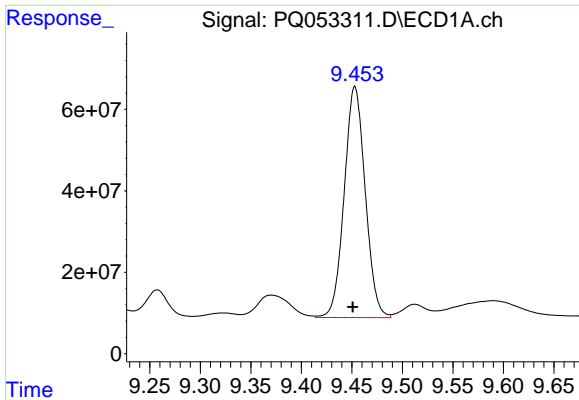
#36 AR-1262-1

R.T.: 8.864 min
 Delta R.T.: 0.000 min
 Response: 311083317
 Conc: 155.54 ng/ml



#36 AR-1262-1

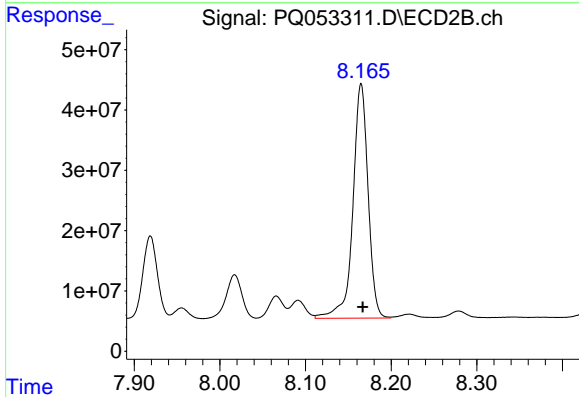
R.T.: 7.614 min
 Delta R.T.: -0.001 min
 Response: 283510589
 Conc: 462.50 ng/ml



#37 AR-1262-2

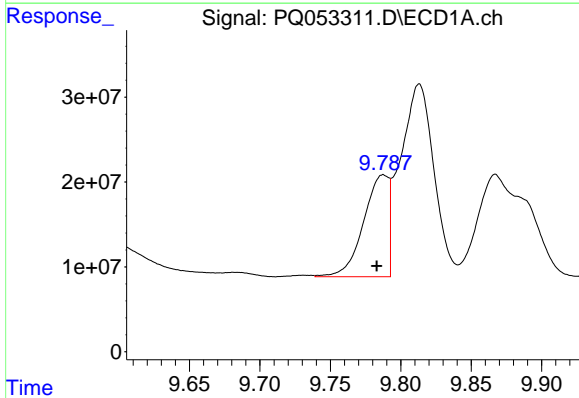
R.T.: 9.453 min
 Delta R.T.: 0.002 min
 Response: 821017597
 Conc: 221.24 ng/ml

Instrument :
 ECD_Q
 ClientSampleId :



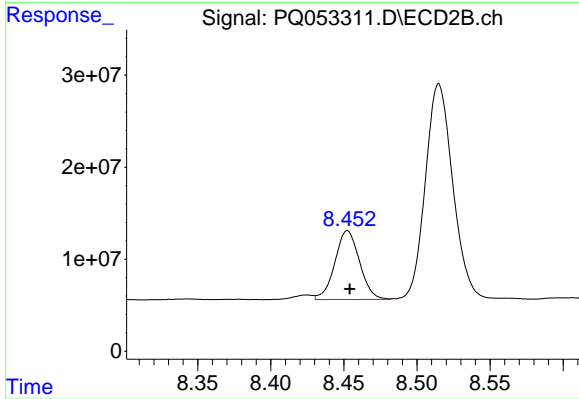
#37 AR-1262-2

R.T.: 8.165 min
 Delta R.T.: -0.002 min
 Response: 479177222
 Conc: 188.57 ng/ml



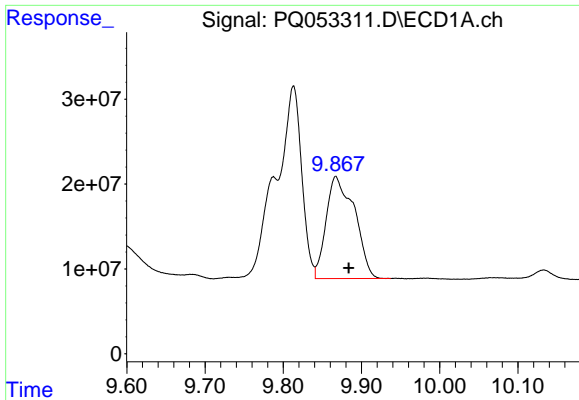
#38 AR-1262-3

R.T.: 9.788 min
 Delta R.T.: 0.005 min
 Response: 148582032
 Conc: 59.20 ng/ml



#38 AR-1262-3

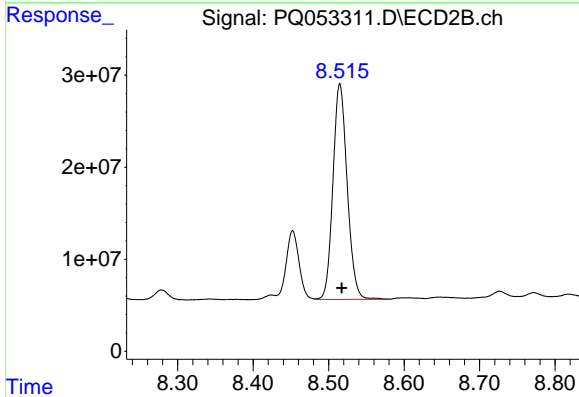
R.T.: 8.452 min
 Delta R.T.: -0.002 min
 Response: 88087875
 Conc: 86.71 ng/ml



#39 AR-1262-4

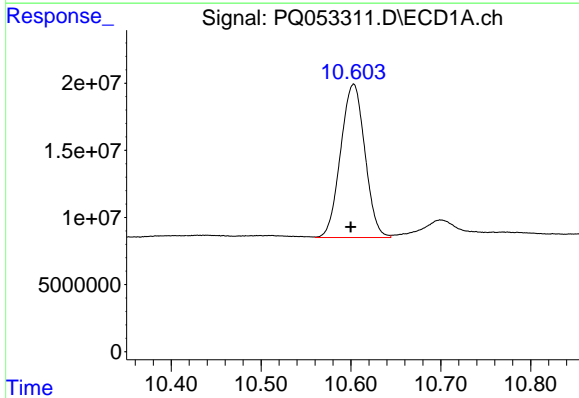
R.T.: 9.867 min
 Delta R.T.: -0.016 min
 Response: 303467818
 Conc: 151.84 ng/ml

Instrument :
 ECD_Q
 ClientSampled :



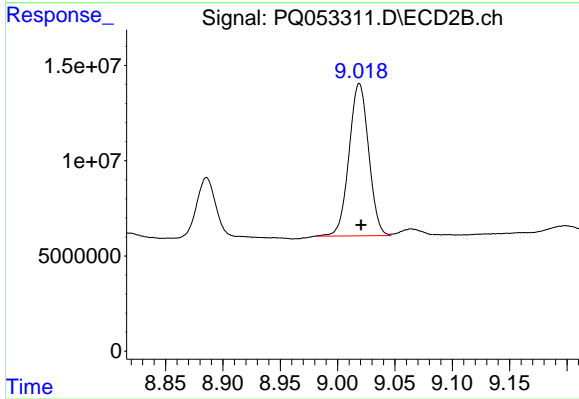
#39 AR-1262-4

R.T.: 8.515 min
 Delta R.T.: -0.003 min
 Response: 307298166
 Conc: 178.37 ng/ml



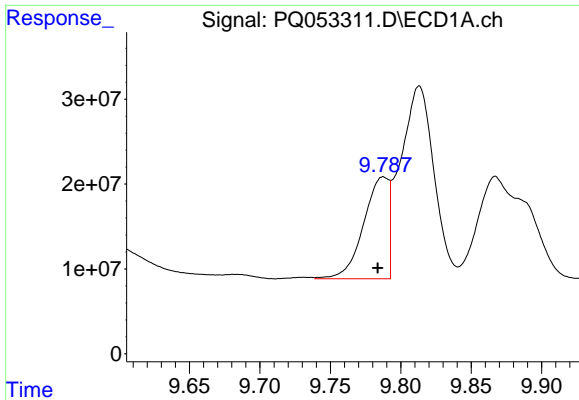
#40 AR-1262-5

R.T.: 10.603 min
 Delta R.T.: 0.003 min
 Response: 214250971
 Conc: 151.16 ng/ml



#40 AR-1262-5

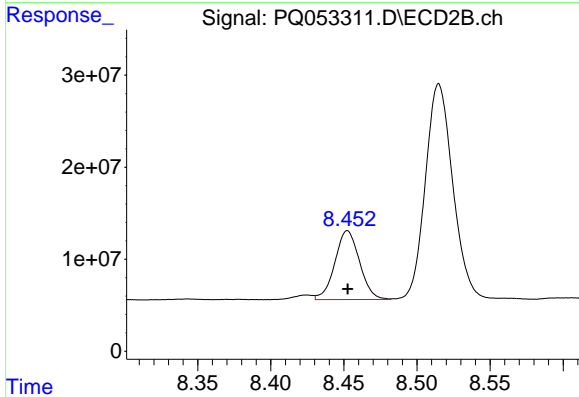
R.T.: 9.019 min
 Delta R.T.: -0.002 min
 Response: 95241095
 Conc: 122.36 ng/ml



#41 AR-1268-1

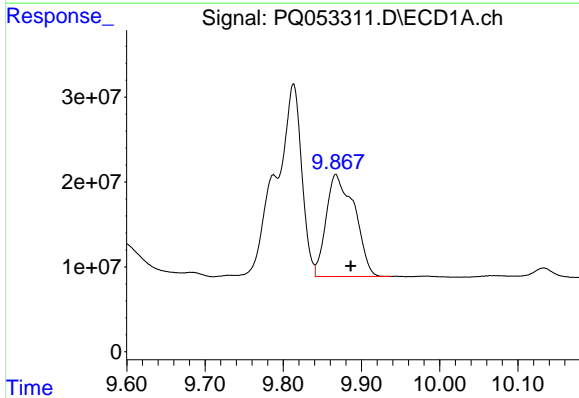
R.T.: 9.788 min
 Delta R.T.: 0.004 min
 Response: 148582032
 Conc: 33.40 ng/ml

Instrument :
 ECD_Q
 ClientSampleId :



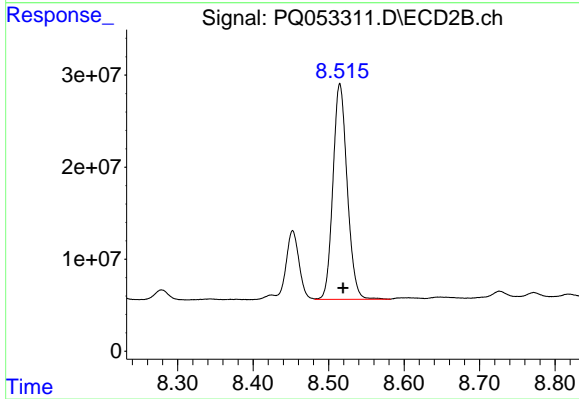
#41 AR-1268-1

R.T.: 8.452 min
 Delta R.T.: 0.000 min
 Response: 88087875
 Conc: 30.08 ng/ml



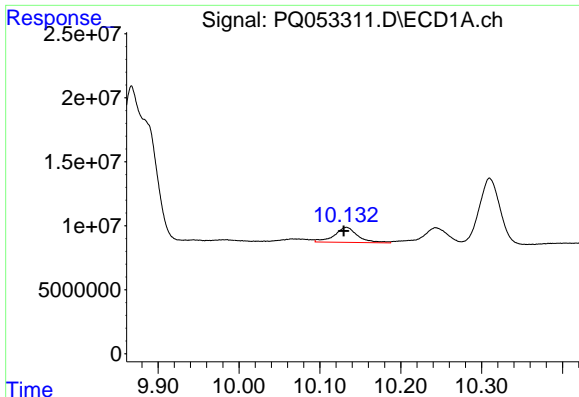
#42 AR-1268-2

R.T.: 9.867 min
 Delta R.T.: -0.019 min
 Response: 303467818
 Conc: 70.78 ng/ml



#42 AR-1268-2

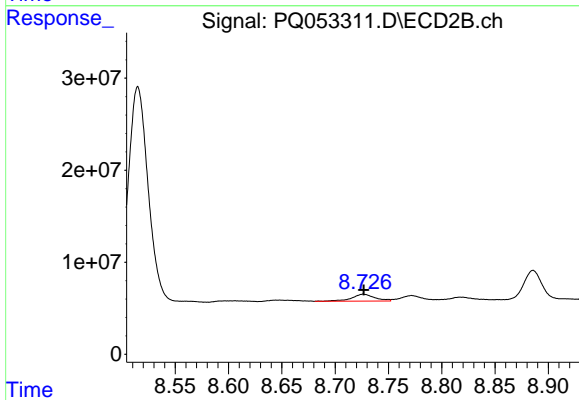
R.T.: 8.515 min
 Delta R.T.: -0.004 min
 Response: 307298166
 Conc: 123.43 ng/ml



#43 AR-1268-3

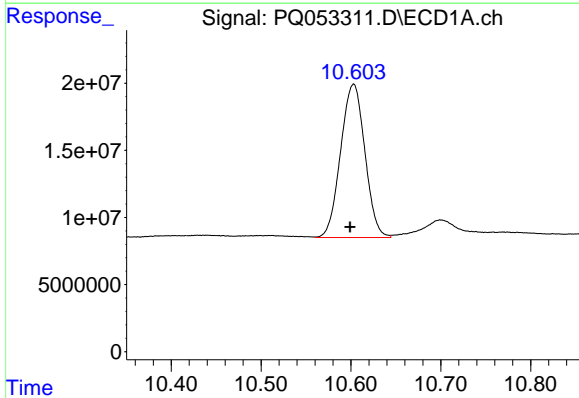
R.T.: 10.133 min
 Delta R.T.: 0.003 min
 Response: 23502507
 Conc: 6.18 ng/ml

Instrument :
 ECD_Q
 ClientSampled :



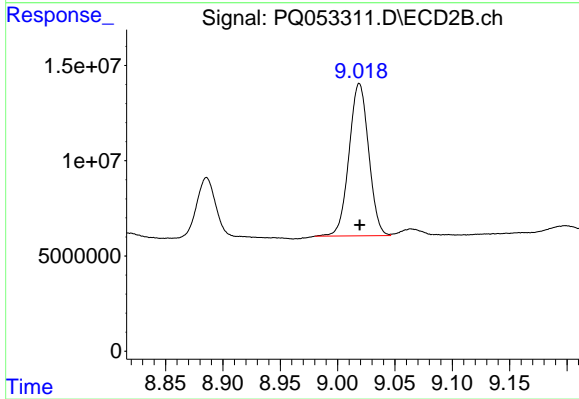
#43 AR-1268-3

R.T.: 8.726 min
 Delta R.T.: 0.000 min
 Response: 11474006
 Conc: 5.29 ng/ml



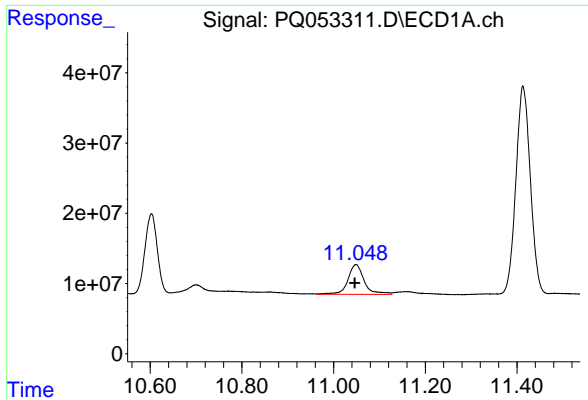
#44 AR-1268-4

R.T.: 10.603 min
 Delta R.T.: 0.004 min
 Response: 214250971
 Conc: 139.18 ng/ml



#44 AR-1268-4

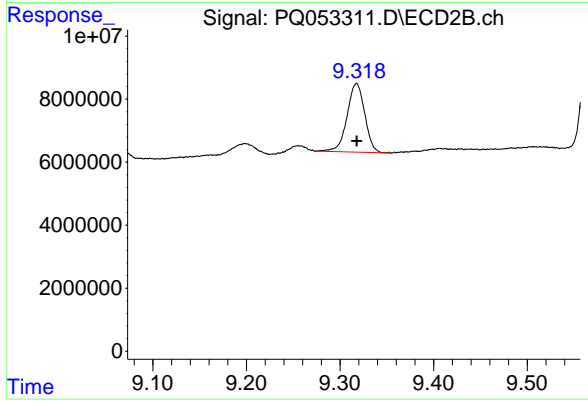
R.T.: 9.019 min
 Delta R.T.: 0.000 min
 Response: 95241095
 Conc: 111.65 ng/ml



#45 AR-1268-5

R.T.: 11.049 min
Delta R.T.: 0.003 min
Response: 106019927
Conc: 8.23 ng/ml

Instrument :
ECD_Q
ClientSampleId :



#45 AR-1268-5

R.T.: 9.318 min
Delta R.T.: 0.000 min
Response: 28431741
Conc: 4.58 ng/ml