

Data Path : Z:\pestpcbsrv\HPCHEM1\ECD_Q\Data\PQ043021\
 Data File : PQ053342.D
 Signal(s) : Signal #1: ECD1A.ch Signal #2: ECD2B.ch
 Acq On : 30 Apr 2021 22:58
 Operator : DD\AJ
 Sample : AR1242CCC400
 Misc :
 ALS Vial : 4 Sample Multiplier: 1

Instrument :
 ECD_Q
 ClientSampled :

Integration File signal 1: autoint1.e
 Integration File signal 2: autoint2.e
 Quant Time: May 01 04:45:24 2021
 Quant Method : Z:\pestpcbsrv\HPCHEM1\ECD_Q\Method\PQ042021CLP.M
 Quant Title : GC EXTRACTABLES
 QLast Update : Wed Apr 21 07:47:07 2021
 Response via : Initial Calibration
 Integrator: ChemStation

Volume Inj. : 1 µl
 Signal #1 Phase : ZB MR1 Signal #2 Phase: ZB MR2
 Signal #1 Info : 30Mx0.32mmx 0.5µm Signal #2 Info : 30M x 0.32mm x 0.25µm

Compound	RT#1	RT#2	Resp#1	Resp#2	ng/ml	ng/ml
System Monitoring Compounds						
1) SA Tetrachlo...	5.221	4.238	648.7E6	257.4E6	23.120	22.134
2) SA Decachlor...	11.410	9.576	1092.1E6	468.2E6	38.616	37.622
Target Compounds						
3) L1 AR-1016-1	6.545	5.495	388.6E6	171.7E6	398.870	389.953
4) L1 AR-1016-2	6.569	5.515	586.8E6	251.7E6	403.568	397.905
5) L1 AR-1016-3	6.635	5.708	353.9E6	129.1E6	402.554	391.380
6) L1 AR-1016-4	6.744	5.758	292.1E6	95647531	403.247	366.938
7) L1 AR-1016-5	7.058	5.989	272.5E6	125.2E6	394.562	376.774
8) L2 AR-1221-1	5.465	4.493	39519329	15920355	129.941	124.844
9) L2 AR-1221-2	5.570	4.594	47912409	20245958	232.200	227.853
10) L2 AR-1221-3	5.658	4.682	205.1E6	87990624	295.452	284.929
11) L3 AR-1232-1	5.658	4.682	205.1E6	87990624	394.920	385.459
12) L3 AR-1232-2	6.250	5.515	281.5E6	251.7E6	1005.437	1030.405
13) L3 AR-1232-3	6.569	5.708	586.8E6	129.1E6	1023.552	1055.314
14) L3 AR-1232-4	6.744	5.803	292.1E6	120.1E6	1021.339	1146.784
15) L3 AR-1232-5	6.838	5.989	228.5E6	125.2E6	1119.693	1067.527
16) L4 AR-1242-1	6.545	5.495	388.6E6	171.7E6	428.573	428.452
17) L4 AR-1242-2	6.569	5.515	586.8E6	251.7E6	432.085	431.606
18) L4 AR-1242-3	6.635	5.708	353.9E6	129.1E6	428.854	426.045
19) L4 AR-1242-4	6.744	5.803	292.1E6	120.1E6	426.376	422.108
20) L4 AR-1242-5	7.526	6.367	303.5E6	168.5E6	415.968	425.204
21) L5 AR-1248-1	6.545	5.495	388.6E6	171.7E6	628.044	630.522
22) L5 AR-1248-2	6.838	5.758	228.5E6	95647531	261.973	257.238
23) L5 AR-1248-3	7.058	5.803	272.5E6	120.1E6	278.017	314.482
24) L5 AR-1248-4	7.486	5.989	282.3E6	125.2E6	247.061	267.843
25) L5 AR-1248-5	7.526	6.411	303.5E6	140.3E6	266.273	285.126
26) L6 AR-1254-1	7.456	6.367	210.6E6	168.5E6	133.951	157.106
27) L6 AR-1254-2	7.692	6.526	245.3E6	40483239	100.211	42.442 #
28) L6 AR-1254-3	8.068	6.947	105.7E6	52772983	40.164	34.073
29) L6 AR-1254-4	8.363	7.186	70931757	45896495	36.856	43.833
30) L6 AR-1254-5	8.791	7.615	31603462	18624519	15.449	12.763
31) L7 AR-1260-1	8.234	7.096	13148578	21351426	11.421	32.948 #
32) L7 AR-1260-2	8.493	7.279	22297136	9072191	16.003	9.787 #
33) L7 AR-1260-3	8.855	7.434	5189743	7120230	4.847	9.151 #
34) L7 AR-1260-4	9.099	7.918	10480309	1949165	8.655	2.871 #
35) L7 AR-1260-5	9.452	8.163	8725327	6716024	3.410	3.630
36) L8 AR-1262-1	8.855	7.615	5189743	18624519	2.595	30.383 #
37) L8 AR-1262-2	9.452	8.163	8725327	6716024	2.351	2.643
38) L8 AR-1262-3	9.812	8.454	5669074	-55604	2.259	N.D. #
39) L8 AR-1262-4	0.000	8.513	0	4483267	N.D.	2.602 #
40) L8 AR-1262-5	0.000	9.017	0	1107576	N.D.	1.423 #
41) L9 AR-1268-1	9.812	8.454	5669074	-55604	1.274	N.D. #

Data Path : Z:\pestpcbsrv\HPCHEM1\ECD_Q\Data\PQ043021\
 Data File : PQ053342.D
 Signal(s) : Signal #1: ECD1A.ch Signal #2: ECD2B.ch
 Acq On : 30 Apr 2021 22:58
 Operator : DD\AJ
 Sample : AR1242CCC400
 Misc :
 ALS Vial : 4 Sample Multiplier: 1

Instrument :
 ECD_Q
 ClientSampleId :

Integration File signal 1: autoint1.e
 Integration File signal 2: autoint2.e
 Quant Time: May 01 04:45:24 2021
 Quant Method : Z:\pestpcbsrv\HPCHEM1\ECD_Q\Method\PQ042021CLP.M
 Quant Title : GC EXTRACTABLES
 QLast Update : Wed Apr 21 07:47:07 2021
 Response via : Initial Calibration
 Integrator: ChemStation

Volume Inj. : 1 µl
 Signal #1 Phase : ZB MR1 Signal #2 Phase: ZB MR2
 Signal #1 Info : 30Mx0.32mmx 0.5µm Signal #2 Info : 30M x 0.32mm x 0.25µm

	Compound	RT#1	RT#2	Resp#1	Resp#2	ng/ml	ng/ml
42)	L9 AR-1268-2	0.000	8.513	0	4483267	N.D.	1.801 #
43)	L9 AR-1268-3	10.129	8.726	3038014	2174924	0.799	1.003 #
44)	L9 AR-1268-4	0.000	9.017	0	1107576	N.D.	1.298 #
45)	L9 AR-1268-5	11.045	9.316	6973269	3152740	0.541	0.508

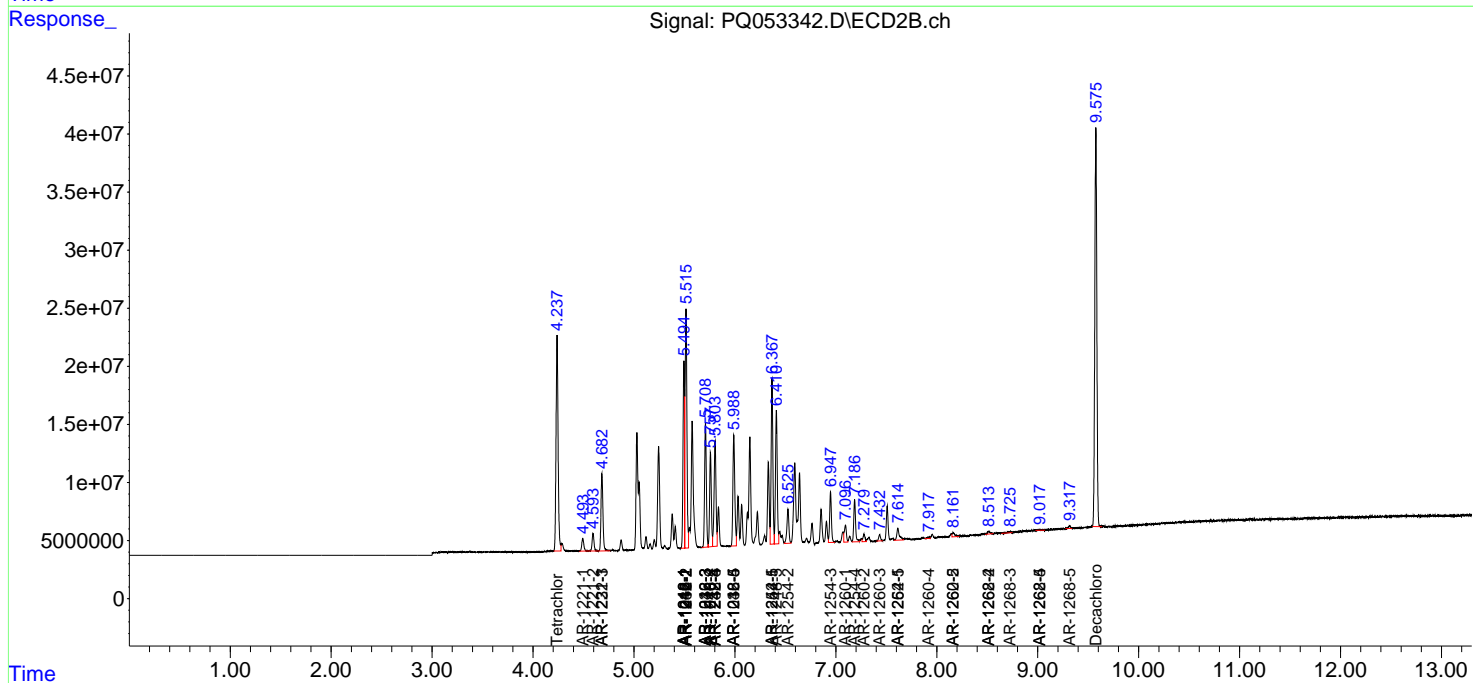
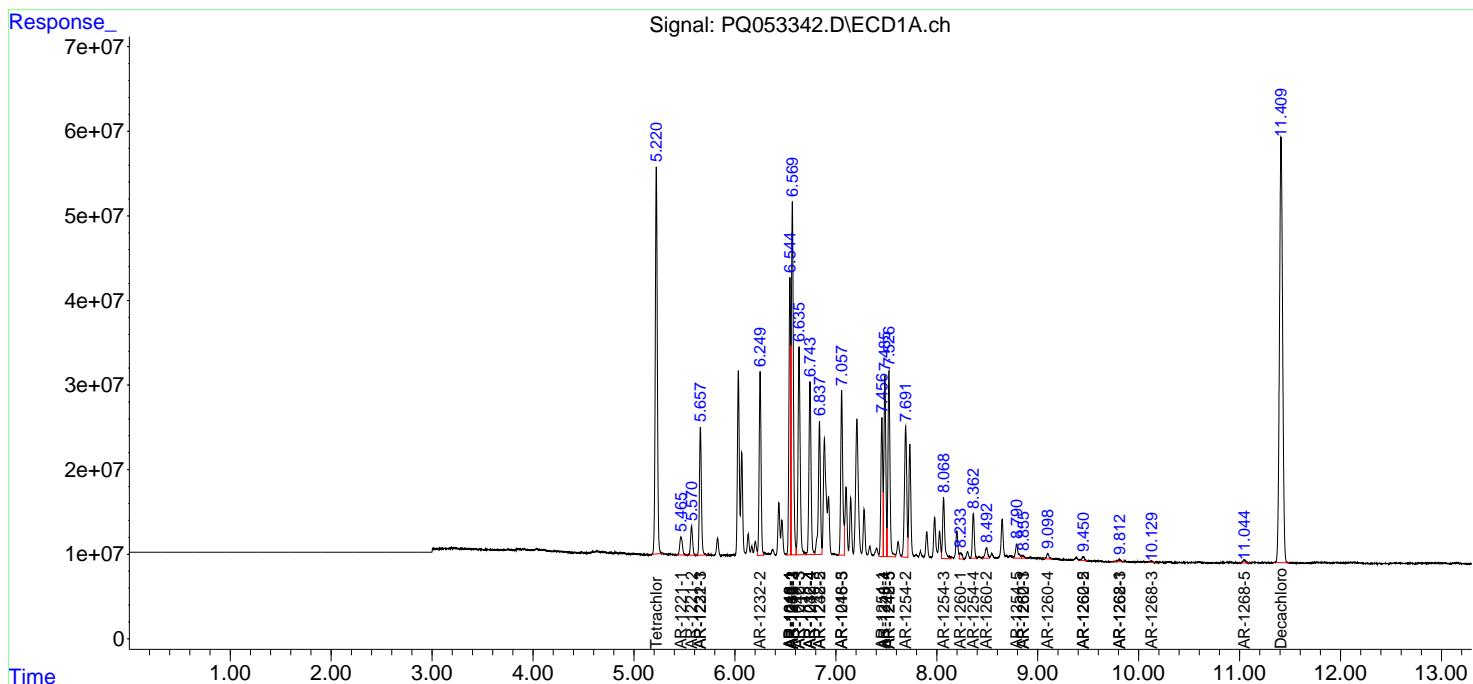
(f)=RT Delta > 1/2 Window (#)=Amounts differ by > 25% (m)=manual int.

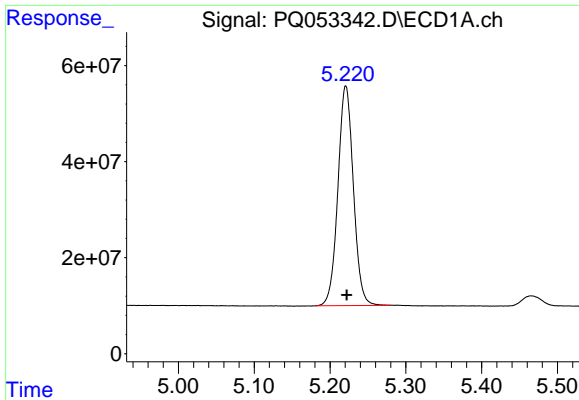
Data Path : Z:\pestpcbsrv\HPCHEM1\ECD_Q\Data\PQ043021\
 Data File : PQ053342.D
 Signal(s) : Signal #1: ECD1A.ch Signal #2: ECD2B.ch
 Acq On : 30 Apr 2021 22:58
 Operator : DD\AJ
 Sample : AR1242CCC400
 Misc :
 ALS Vial : 4 Sample Multiplier: 1

Instrument :
 ECD_Q
 ClientSampled :

Integration File signal 1: autoint1.e
 Integration File signal 2: autoint2.e
 Quant Time: May 01 04:45:24 2021
 Quant Method : Z:\pestpcbsrv\HPCHEM1\ECD_Q\Method\PQ042021CLP.M
 Quant Title : GC EXTRACTABLES
 QLast Update : Wed Apr 21 07:47:07 2021
 Response via : Initial Calibration
 Integrator: ChemStation

Volume Inj. : 1 µl
 Signal #1 Phase : ZB MR1 Signal #2 Phase: ZB MR2
 Signal #1 Info : 30Mx0.32mmx 0.5µm Signal #2 Info : 30M x 0.32mm x 0.25µm

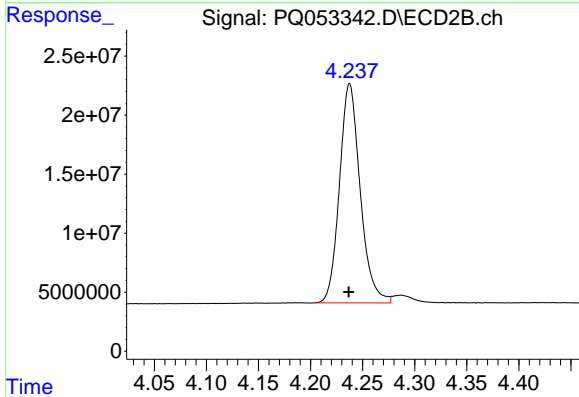




#1 Tetrachloro-m-xylene

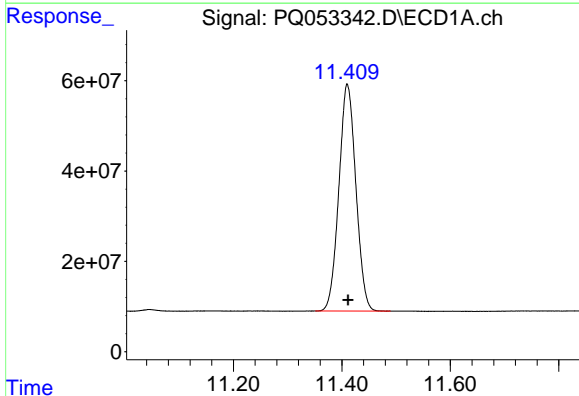
R.T.: 5.221 min
Delta R.T.: -0.001 min
Response: 648736946
Conc: 23.12 ng/ml

Instrument :
ECD_Q
ClientSampled :



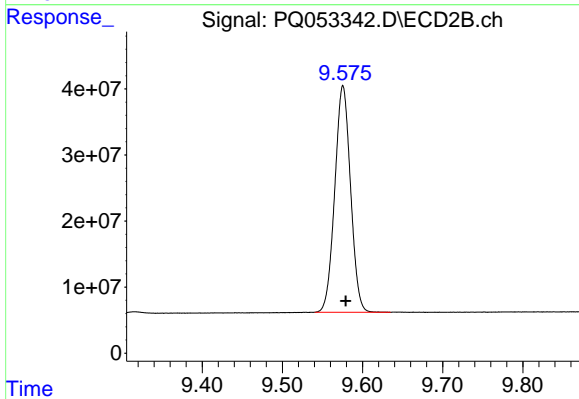
#1 Tetrachloro-m-xylene

R.T.: 4.238 min
Delta R.T.: 0.000 min
Response: 257391208
Conc: 22.13 ng/ml



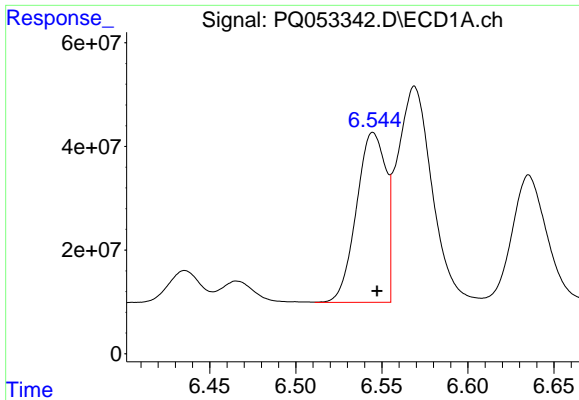
#2 Decachlorobiphenyl

R.T.: 11.410 min
Delta R.T.: -0.002 min
Response: 1092148256
Conc: 38.62 ng/ml



#2 Decachlorobiphenyl

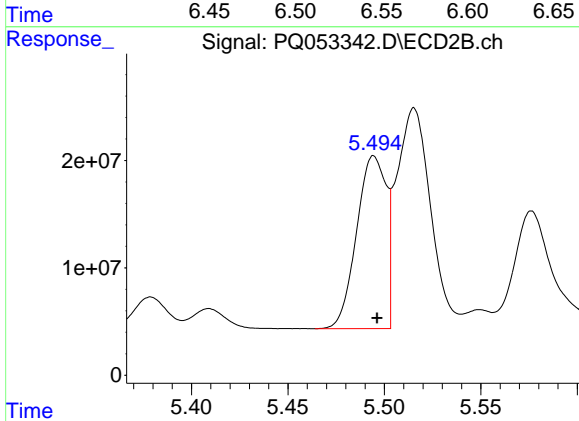
R.T.: 9.576 min
Delta R.T.: -0.004 min
Response: 468249624
Conc: 37.62 ng/ml



#3 AR-1016-1

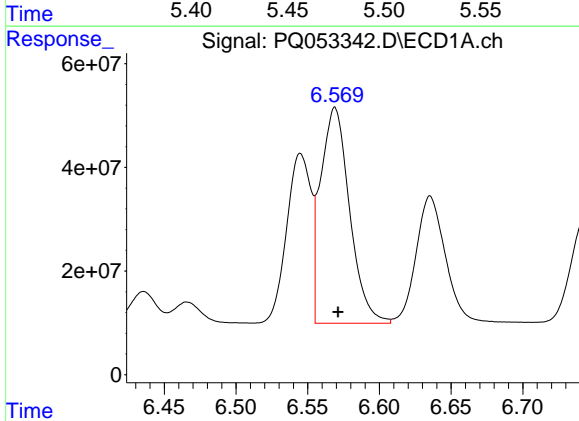
R.T.: 6.545 min
 Delta R.T.: -0.002 min
 Response: 388618869
 Conc: 398.87 ng/ml

Instrument :
 ECD_Q
 ClientSampleId :



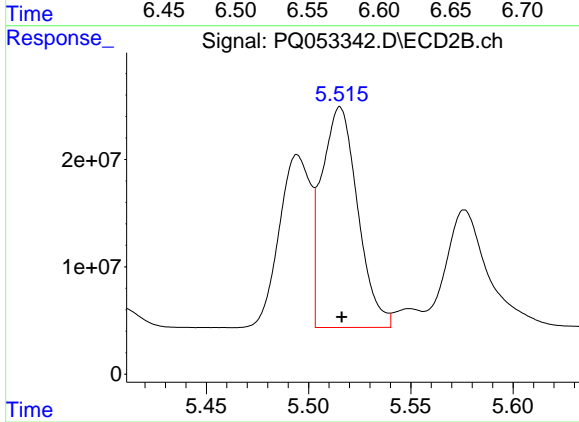
#3 AR-1016-1

R.T.: 5.495 min
 Delta R.T.: -0.002 min
 Response: 171737526
 Conc: 389.95 ng/ml



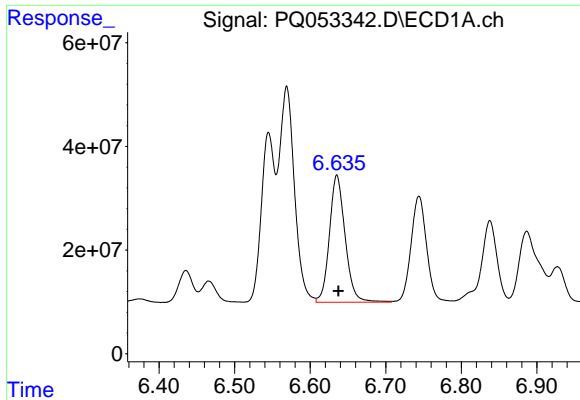
#4 AR-1016-2

R.T.: 6.569 min
 Delta R.T.: -0.002 min
 Response: 586827986
 Conc: 403.57 ng/ml



#4 AR-1016-2

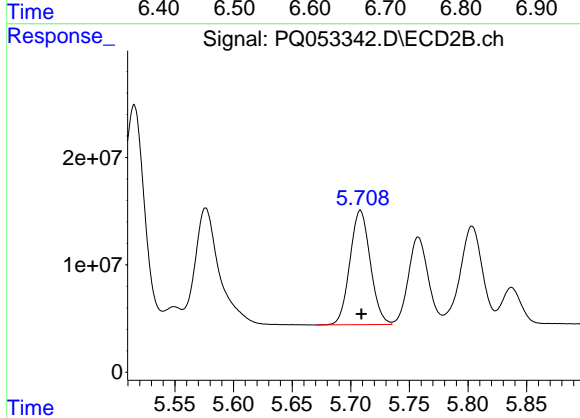
R.T.: 5.515 min
 Delta R.T.: 0.000 min
 Response: 251746491
 Conc: 397.90 ng/ml



#5 AR-1016-3

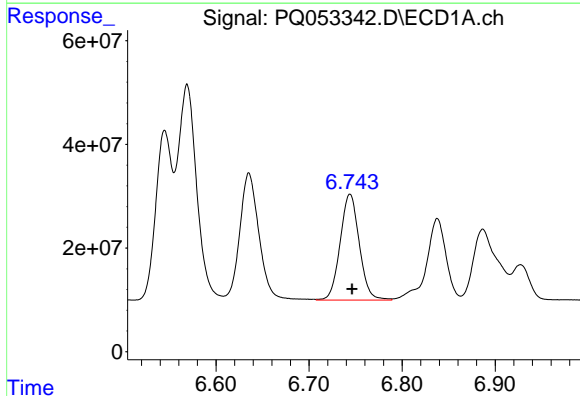
R.T.: 6.635 min
 Delta R.T.: -0.002 min
 Response: 353909892
 Conc: 402.55 ng/ml

Instrument :
 ECD_Q
 ClientSampled :



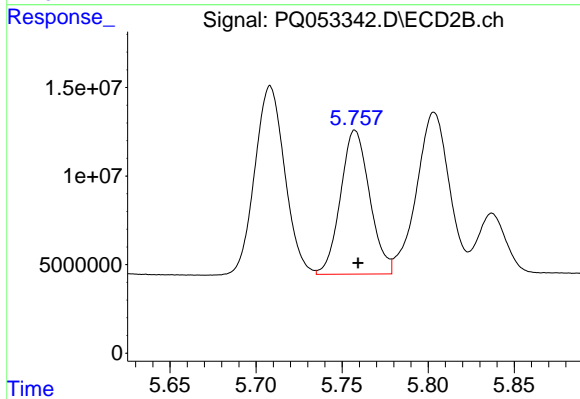
#5 AR-1016-3

R.T.: 5.708 min
 Delta R.T.: -0.001 min
 Response: 129066269
 Conc: 391.38 ng/ml



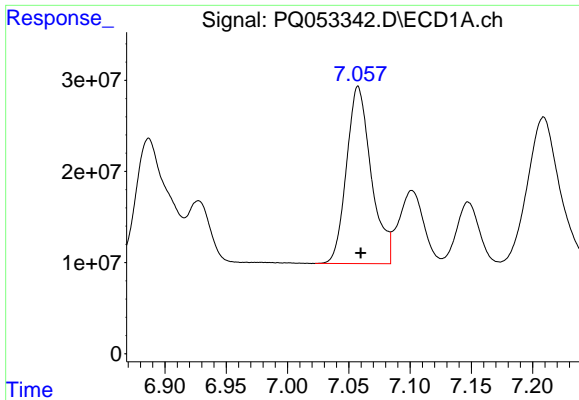
#6 AR-1016-4

R.T.: 6.744 min
 Delta R.T.: -0.002 min
 Response: 292113251
 Conc: 403.25 ng/ml



#6 AR-1016-4

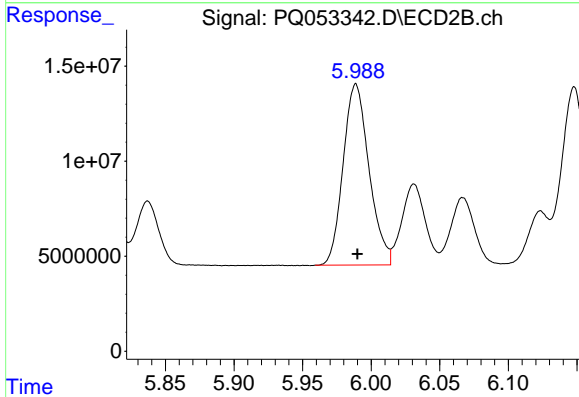
R.T.: 5.758 min
 Delta R.T.: -0.002 min
 Response: 95647531
 Conc: 366.94 ng/ml



#7 AR-1016-5

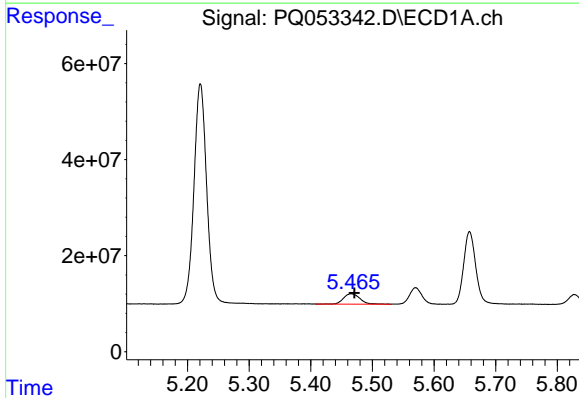
R.T.: 7.058 min
Delta R.T.: -0.002 min
Response: 272520852
Conc: 394.56 ng/ml

Instrument :
ECD_Q
ClientSampleId :



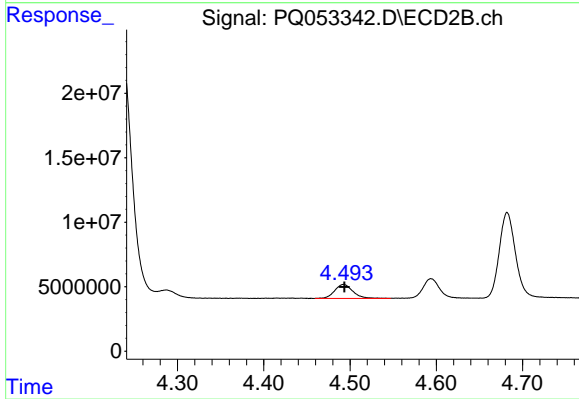
#7 AR-1016-5

R.T.: 5.989 min
Delta R.T.: -0.001 min
Response: 125213690
Conc: 376.77 ng/ml



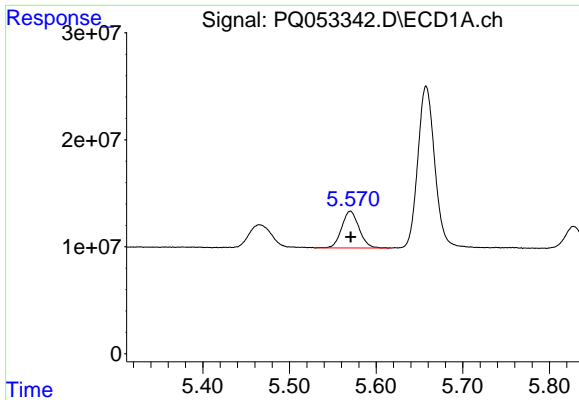
#8 AR-1221-1

R.T.: 5.465 min
Delta R.T.: -0.005 min
Response: 39519329
Conc: 129.94 ng/ml



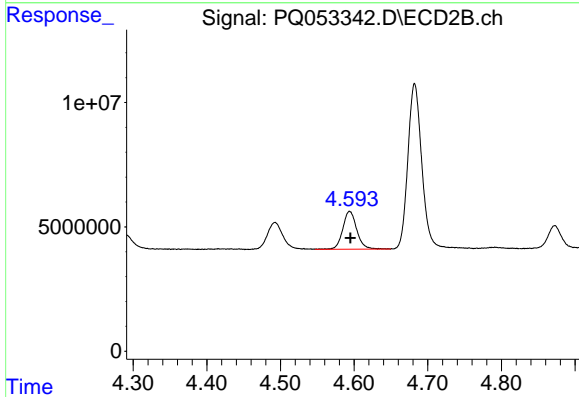
#8 AR-1221-1

R.T.: 4.493 min
Delta R.T.: -0.001 min
Response: 15920355
Conc: 124.84 ng/ml

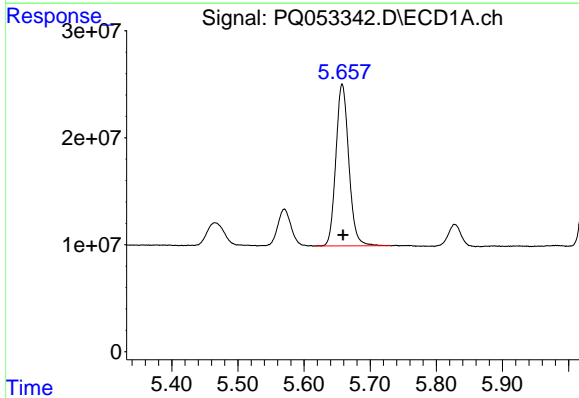


#9 AR-1221-2
R.T.: 5.570 min
Delta R.T.: 0.000 min
Response: 47912409
Conc: 232.20 ng/ml

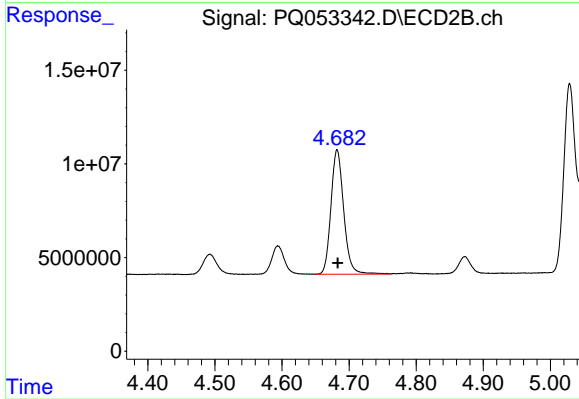
Instrument :
ECD_Q
ClientSampled :



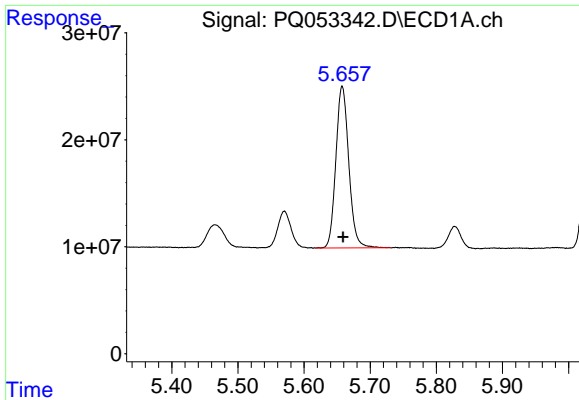
#9 AR-1221-2
R.T.: 4.594 min
Delta R.T.: 0.000 min
Response: 20245958
Conc: 227.85 ng/ml



#10 AR-1221-3
R.T.: 5.658 min
Delta R.T.: -0.002 min
Response: 205091078
Conc: 295.45 ng/ml

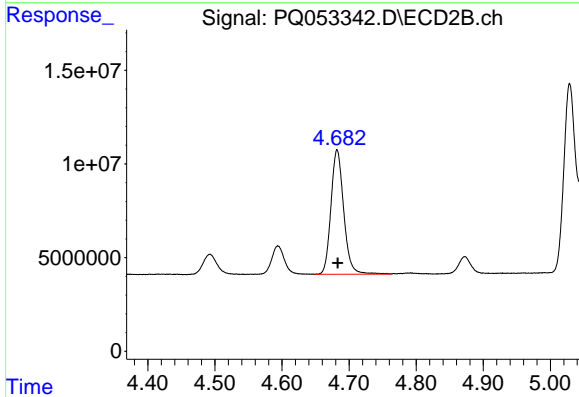


#10 AR-1221-3
R.T.: 4.682 min
Delta R.T.: 0.000 min
Response: 87990624
Conc: 284.93 ng/ml

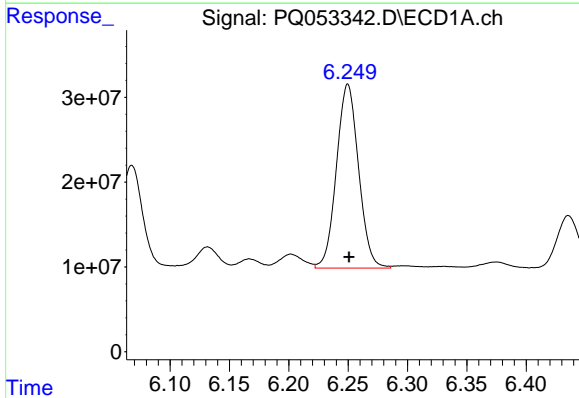


#11 AR-1232-1
 R.T.: 5.658 min
 Delta R.T.: -0.001 min
 Response: 205091078
 Conc: 394.92 ng/ml

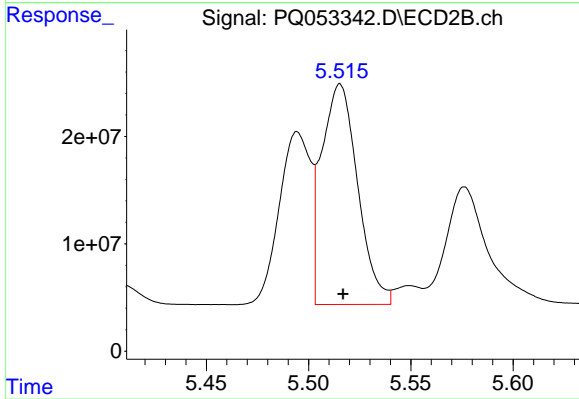
Instrument :
 ECD_Q
 ClientSampleId :



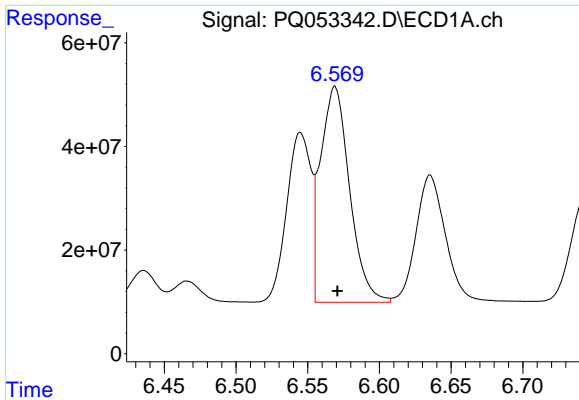
#11 AR-1232-1
 R.T.: 4.682 min
 Delta R.T.: 0.000 min
 Response: 87990624
 Conc: 385.46 ng/ml



#12 AR-1232-2
 R.T.: 6.250 min
 Delta R.T.: -0.001 min
 Response: 281536113
 Conc: 1005.44 ng/ml



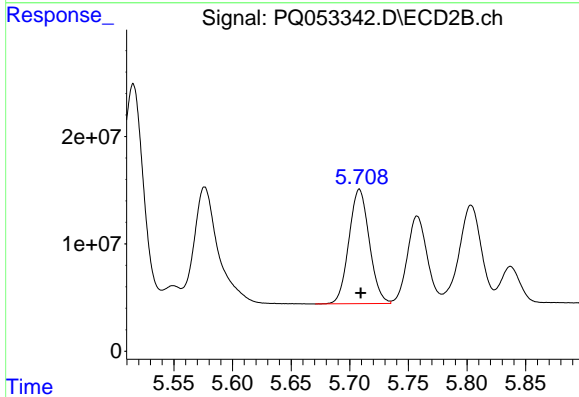
#12 AR-1232-2
 R.T.: 5.515 min
 Delta R.T.: -0.001 min
 Response: 251746491
 Conc: 1030.40 ng/ml



#13 AR-1232-3

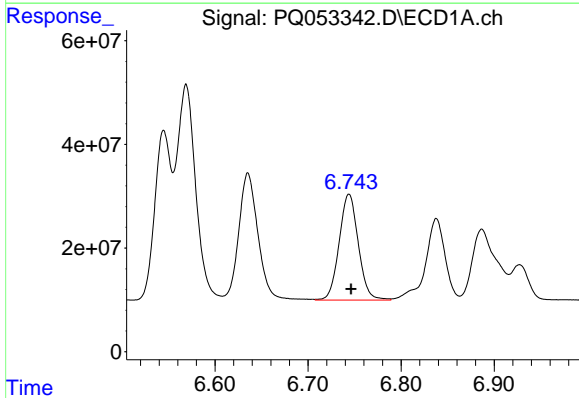
R.T.: 6.569 min
 Delta R.T.: -0.002 min
 Response: 586827986
 Conc: 1023.55 ng/ml

Instrument :
 ECD_Q
 ClientSampleId :



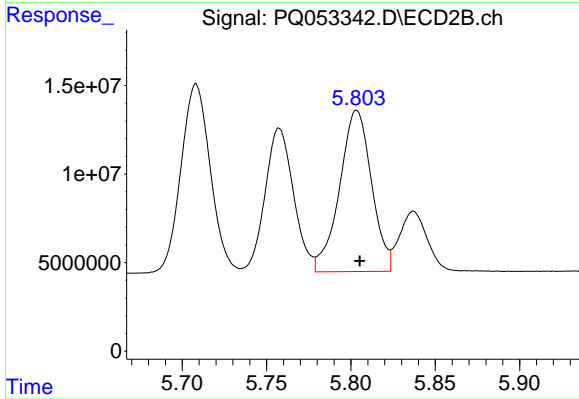
#13 AR-1232-3

R.T.: 5.708 min
 Delta R.T.: -0.001 min
 Response: 129066269
 Conc: 1055.31 ng/ml



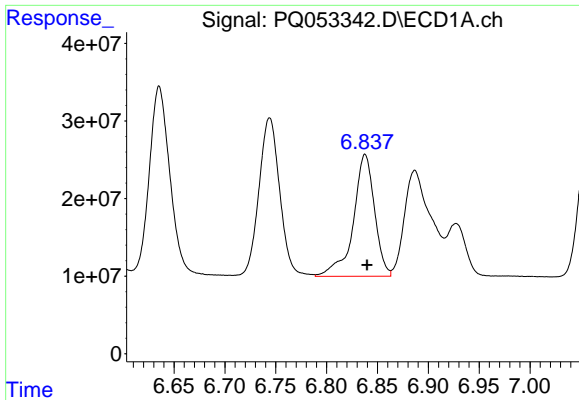
#14 AR-1232-4

R.T.: 6.744 min
 Delta R.T.: -0.002 min
 Response: 292113251
 Conc: 1021.34 ng/ml



#14 AR-1232-4

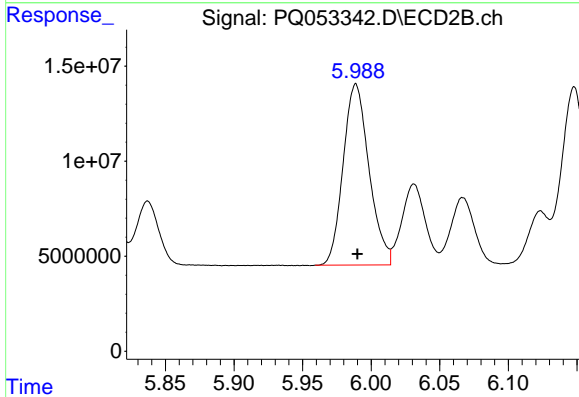
R.T.: 5.803 min
 Delta R.T.: -0.002 min
 Response: 120068350
 Conc: 1146.78 ng/ml



#15 AR-1232-5

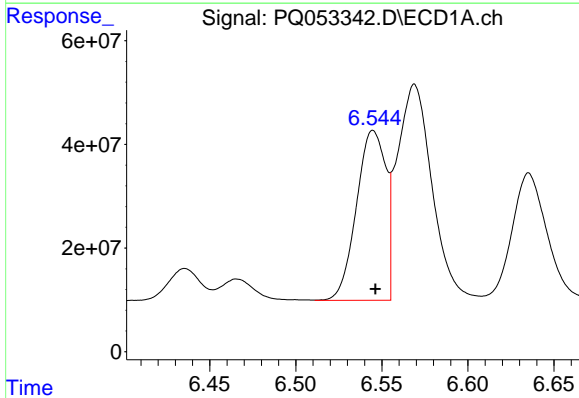
R.T.: 6.838 min
 Delta R.T.: -0.002 min
 Response: 228487403
 Conc: 1119.69 ng/ml

Instrument :
 ECD_Q
 ClientSampled :



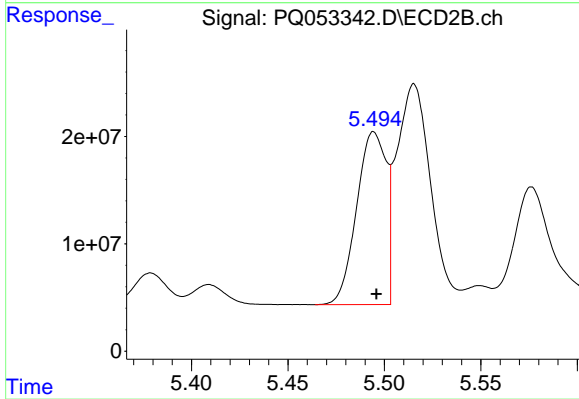
#15 AR-1232-5

R.T.: 5.989 min
 Delta R.T.: -0.001 min
 Response: 125213690
 Conc: 1067.53 ng/ml



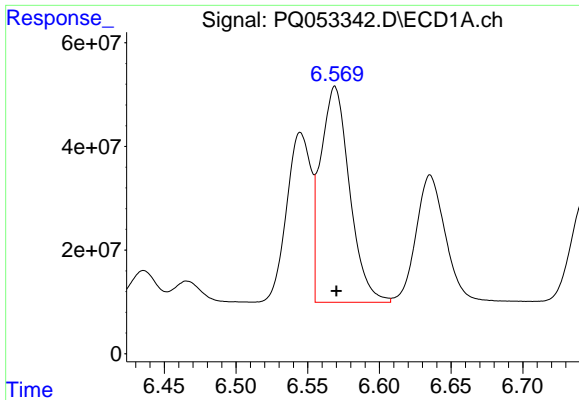
#16 AR-1242-1

R.T.: 6.545 min
 Delta R.T.: -0.001 min
 Response: 388618869
 Conc: 428.57 ng/ml



#16 AR-1242-1

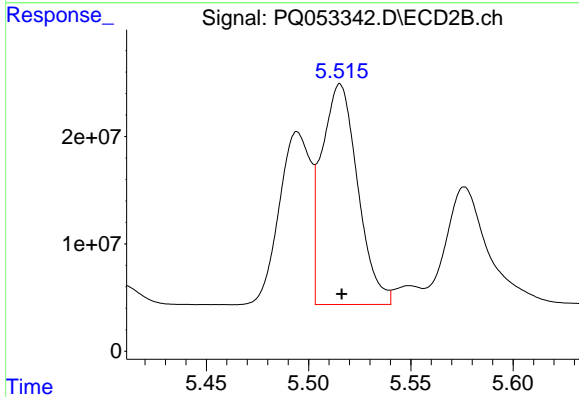
R.T.: 5.495 min
 Delta R.T.: -0.001 min
 Response: 171737526
 Conc: 428.45 ng/ml



#17 AR-1242-2

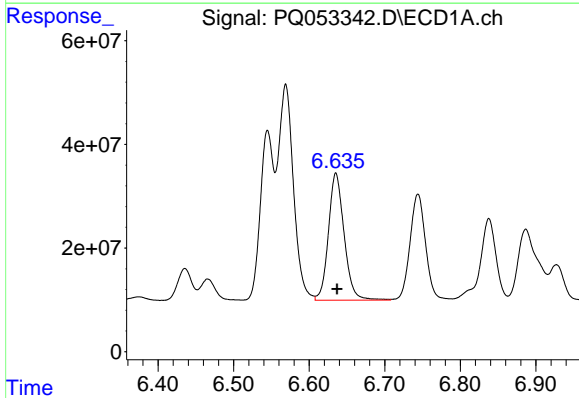
R.T.: 6.569 min
Delta R.T.: -0.001 min
Response: 586827986
Conc: 432.08 ng/ml

Instrument :
ECD_Q
ClientSampleId :



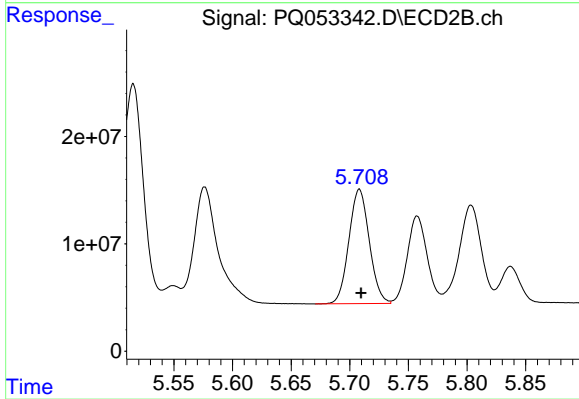
#17 AR-1242-2

R.T.: 5.515 min
Delta R.T.: 0.000 min
Response: 251746491
Conc: 431.61 ng/ml



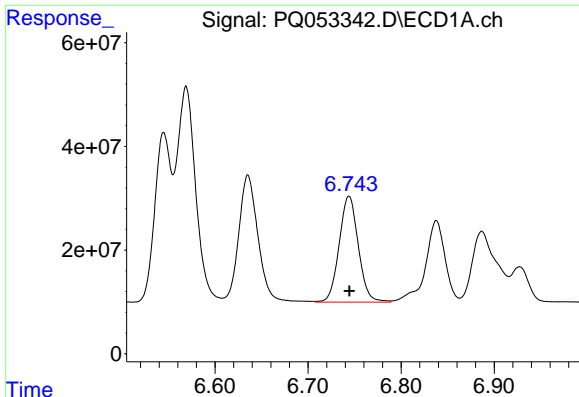
#18 AR-1242-3

R.T.: 6.635 min
Delta R.T.: -0.002 min
Response: 353909892
Conc: 428.85 ng/ml



#18 AR-1242-3

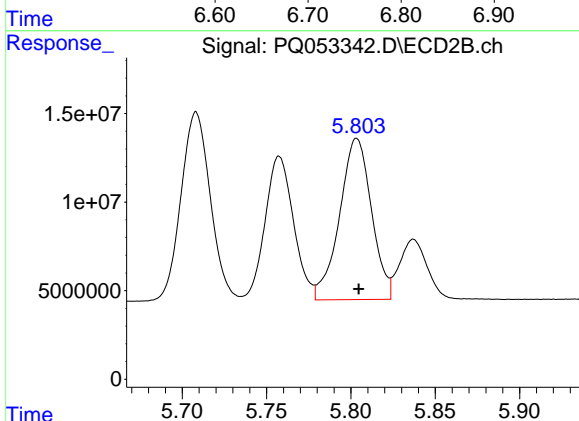
R.T.: 5.708 min
Delta R.T.: -0.002 min
Response: 129066269
Conc: 426.04 ng/ml



#19 AR-1242-4

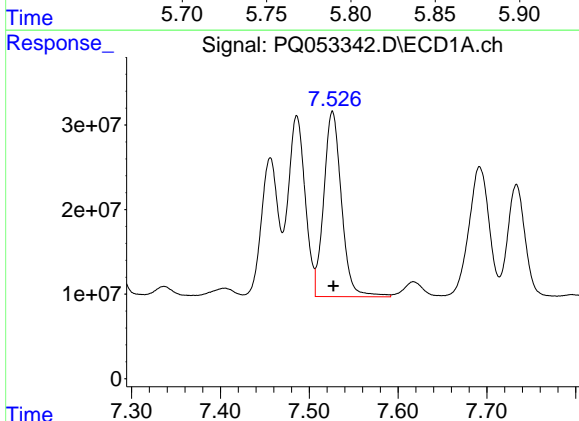
R.T.: 6.744 min
Delta R.T.: 0.000 min
Response: 292113251
Conc: 426.38 ng/ml

Instrument :
ECD_Q
ClientSampled :



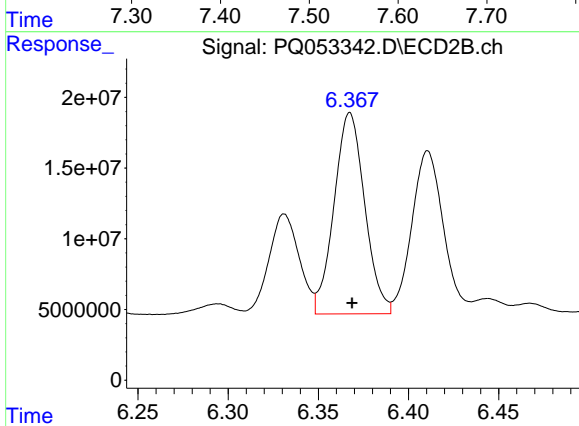
#19 AR-1242-4

R.T.: 5.803 min
Delta R.T.: -0.001 min
Response: 120068350
Conc: 422.11 ng/ml



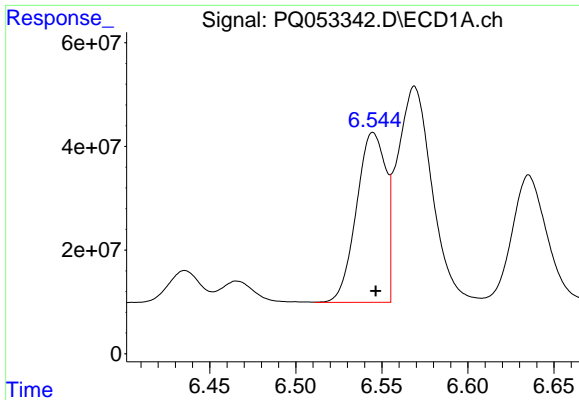
#20 AR-1242-5

R.T.: 7.526 min
Delta R.T.: 0.000 min
Response: 303454167
Conc: 415.97 ng/ml



#20 AR-1242-5

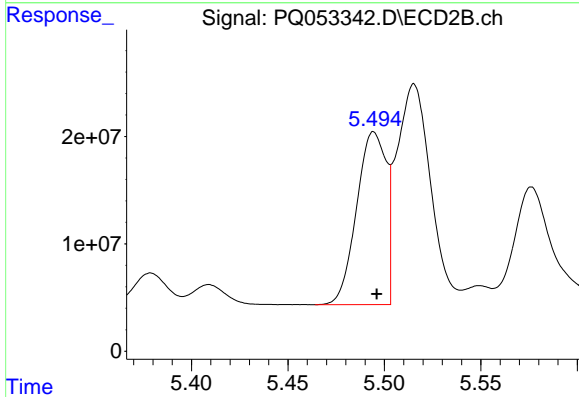
R.T.: 6.367 min
Delta R.T.: -0.001 min
Response: 168453883
Conc: 425.20 ng/ml



#21 AR-1248-1

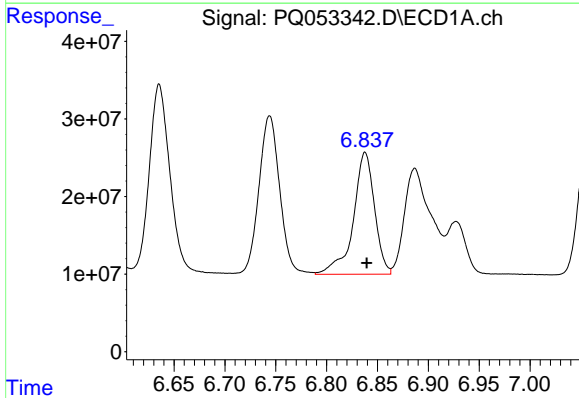
R.T.: 6.545 min
 Delta R.T.: -0.002 min
 Response: 388618869
 Conc: 628.04 ng/ml

Instrument :
 ECD_Q
 ClientSampleId :



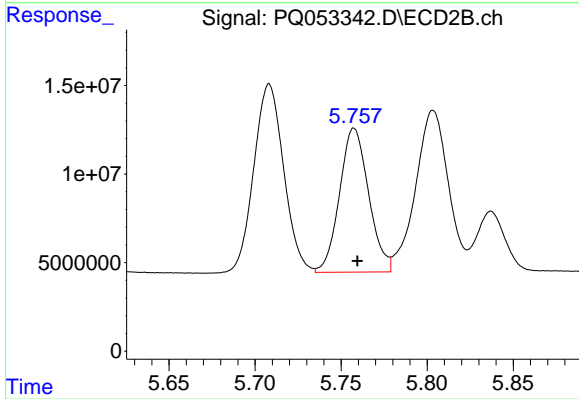
#21 AR-1248-1

R.T.: 5.495 min
 Delta R.T.: -0.002 min
 Response: 171737526
 Conc: 630.52 ng/ml



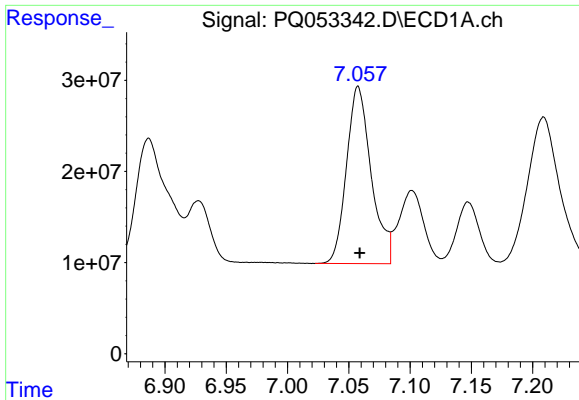
#22 AR-1248-2

R.T.: 6.838 min
 Delta R.T.: -0.002 min
 Response: 228487403
 Conc: 261.97 ng/ml



#22 AR-1248-2

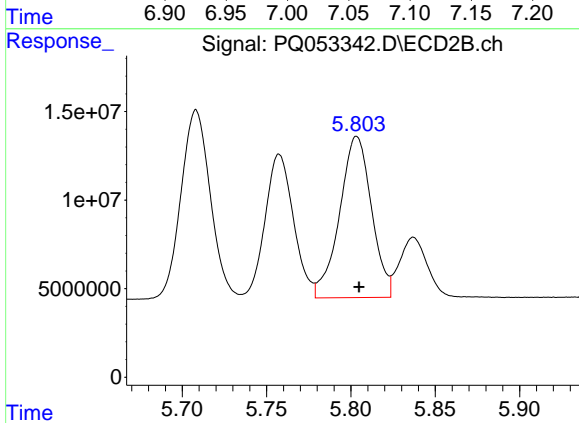
R.T.: 5.758 min
 Delta R.T.: -0.002 min
 Response: 95647531
 Conc: 257.24 ng/ml



#23 AR-1248-3

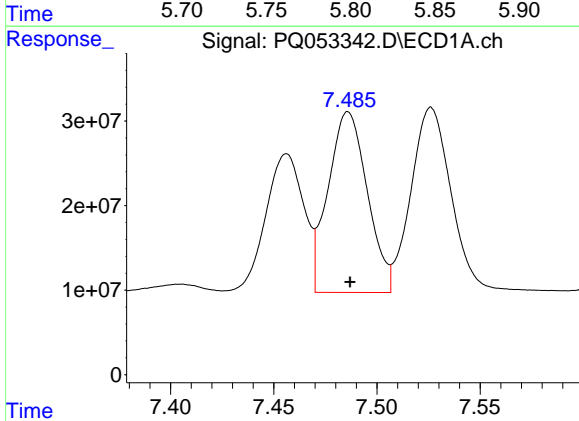
R.T.: 7.058 min
 Delta R.T.: -0.001 min
 Response: 272520852
 Conc: 278.02 ng/ml

Instrument :
 ECD_Q
 ClientSampled :



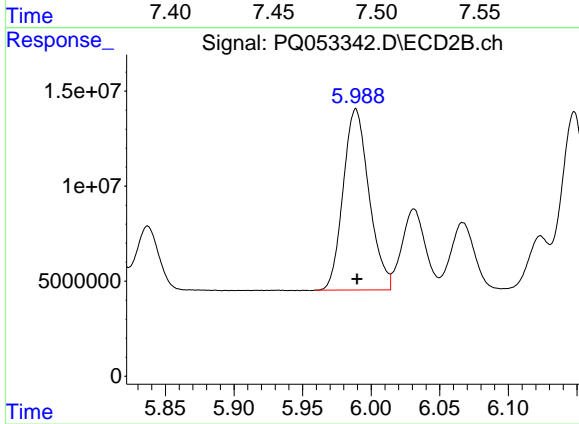
#23 AR-1248-3

R.T.: 5.803 min
 Delta R.T.: -0.001 min
 Response: 120068350
 Conc: 314.48 ng/ml



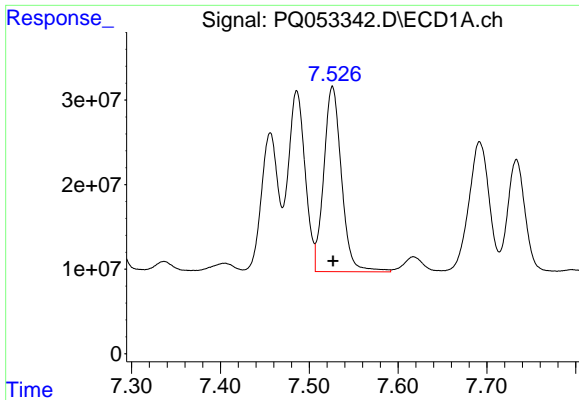
#24 AR-1248-4

R.T.: 7.486 min
 Delta R.T.: 0.000 min
 Response: 282324328
 Conc: 247.06 ng/ml



#24 AR-1248-4

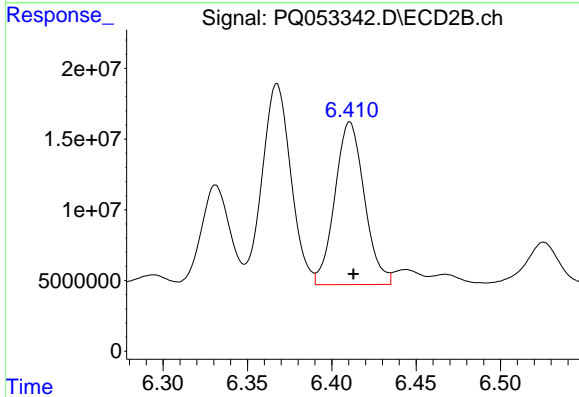
R.T.: 5.989 min
 Delta R.T.: 0.000 min
 Response: 125213690
 Conc: 267.84 ng/ml



#25 AR-1248-5

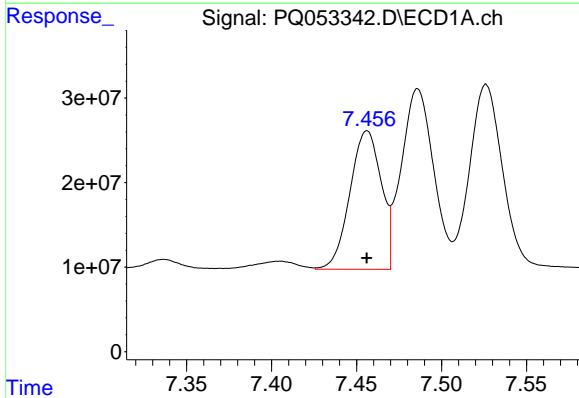
R.T.: 7.526 min
 Delta R.T.: 0.000 min
 Response: 303454167
 Conc: 266.27 ng/ml

Instrument :
 ECD_Q
 ClientSampled :



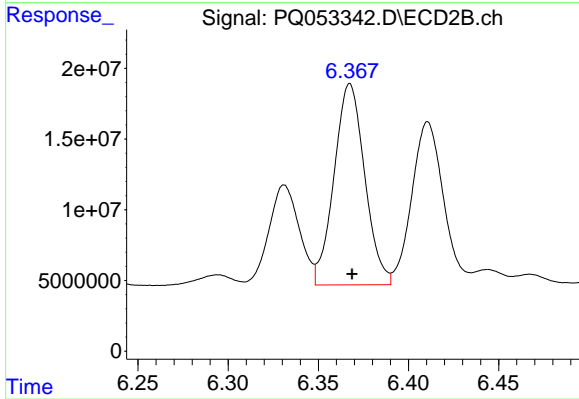
#25 AR-1248-5

R.T.: 6.411 min
 Delta R.T.: -0.002 min
 Response: 140298432
 Conc: 285.13 ng/ml



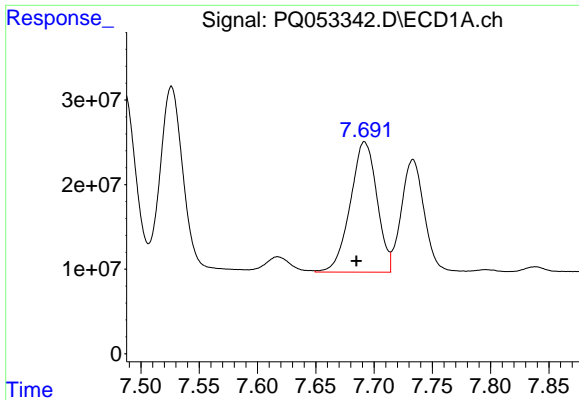
#26 AR-1254-1

R.T.: 7.456 min
 Delta R.T.: 0.000 min
 Response: 210577416
 Conc: 133.95 ng/ml



#26 AR-1254-1

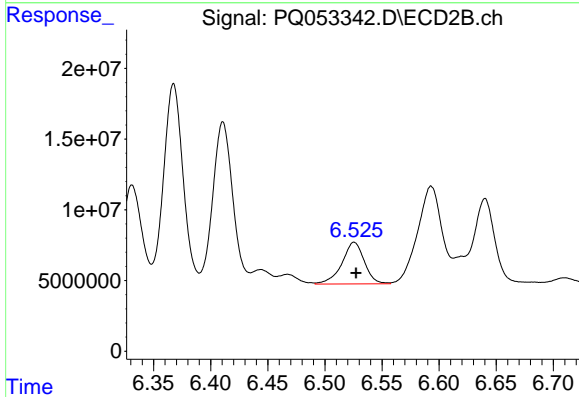
R.T.: 6.367 min
 Delta R.T.: -0.001 min
 Response: 168453883
 Conc: 157.11 ng/ml



#27 AR-1254-2

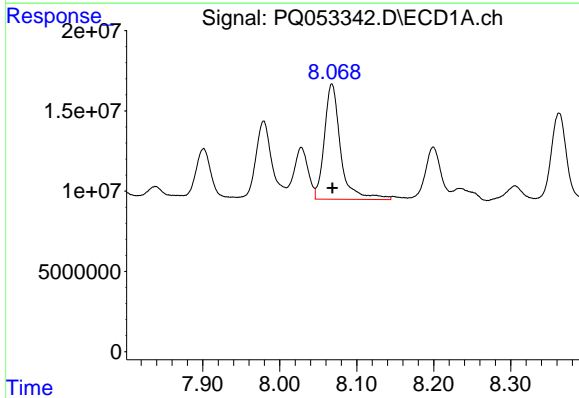
R.T.: 7.692 min
 Delta R.T.: 0.007 min
 Response: 245342749
 Conc: 100.21 ng/ml

Instrument :
 ECD_Q
 ClientSampleId :



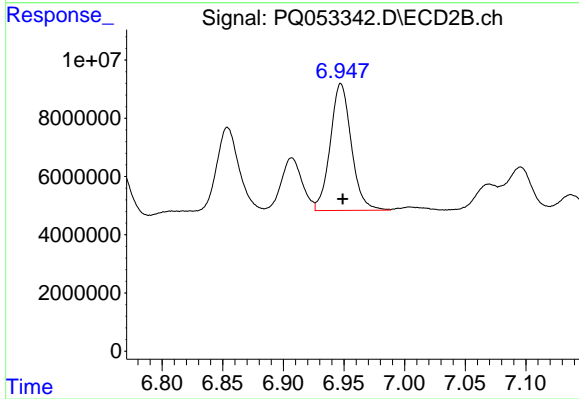
#27 AR-1254-2

R.T.: 6.526 min
 Delta R.T.: -0.002 min
 Response: 40483239
 Conc: 42.44 ng/ml



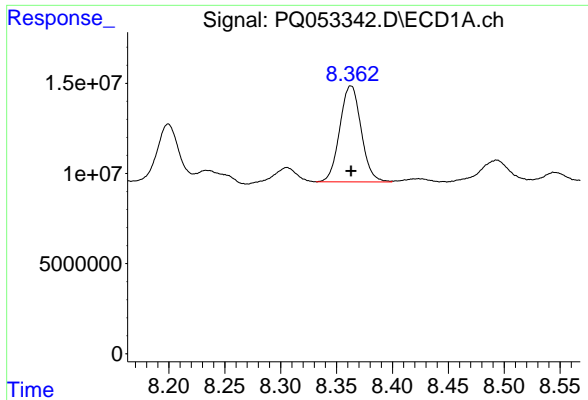
#28 AR-1254-3

R.T.: 8.068 min
 Delta R.T.: 0.000 min
 Response: 105694038
 Conc: 40.16 ng/ml



#28 AR-1254-3

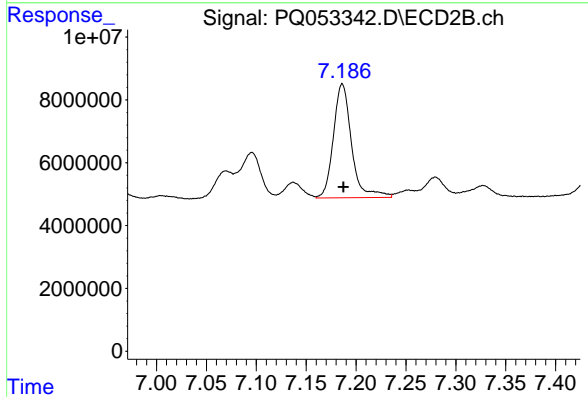
R.T.: 6.947 min
 Delta R.T.: -0.001 min
 Response: 52772983
 Conc: 34.07 ng/ml



#29 AR-1254-4

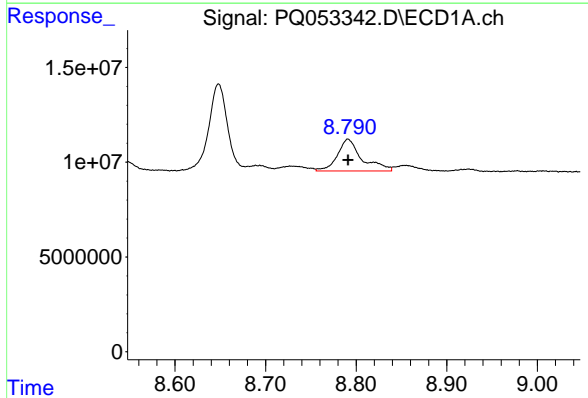
R.T.: 8.363 min
 Delta R.T.: 0.000 min
 Response: 70931757
 Conc: 36.86 ng/ml

Instrument :
 ECD_Q
 ClientSampleId :



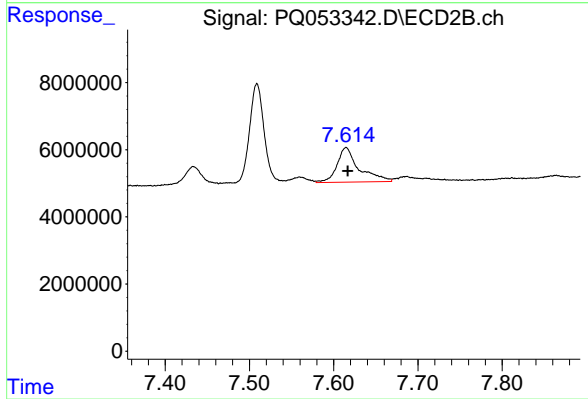
#29 AR-1254-4

R.T.: 7.186 min
 Delta R.T.: -0.001 min
 Response: 45896495
 Conc: 43.83 ng/ml



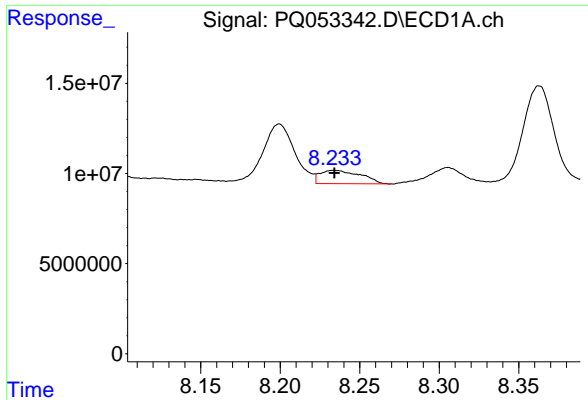
#30 AR-1254-5

R.T.: 8.791 min
 Delta R.T.: 0.000 min
 Response: 31603462
 Conc: 15.45 ng/ml



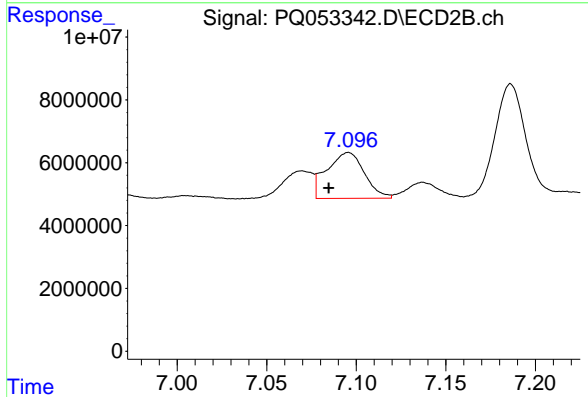
#30 AR-1254-5

R.T.: 7.615 min
 Delta R.T.: -0.002 min
 Response: 18624519
 Conc: 12.76 ng/ml

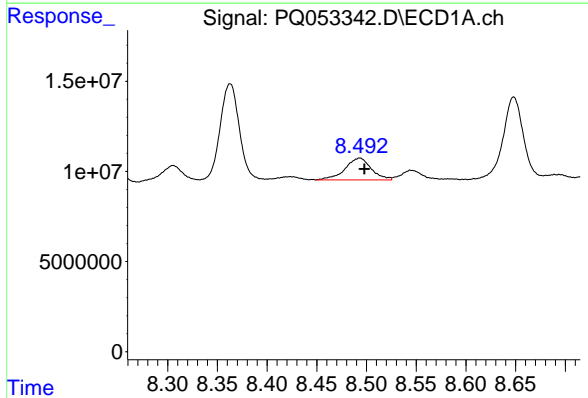


#31 AR-1260-1
 R.T.: 8.234 min
 Delta R.T.: 0.000 min
 Response: 13148578
 Conc: 11.42 ng/ml

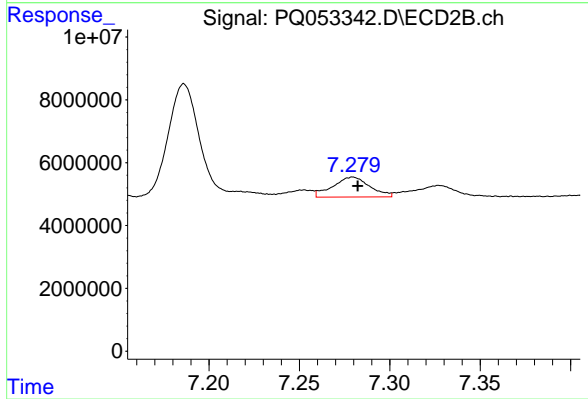
Instrument :
 ECD_Q
 ClientSampled :



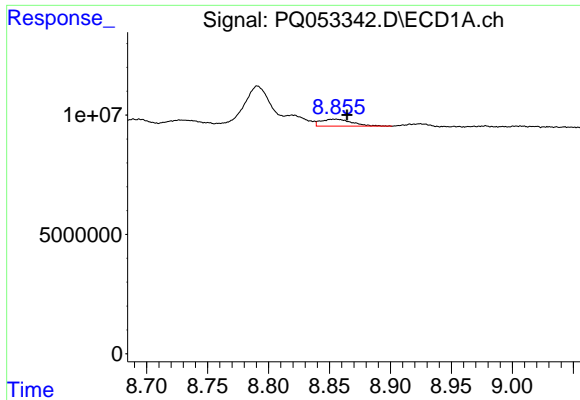
#31 AR-1260-1
 R.T.: 7.096 min
 Delta R.T.: 0.011 min
 Response: 21351426
 Conc: 32.95 ng/ml



#32 AR-1260-2
 R.T.: 8.493 min
 Delta R.T.: -0.005 min
 Response: 22297136
 Conc: 16.00 ng/ml



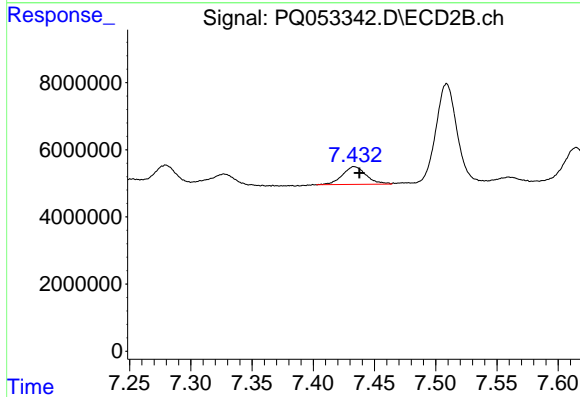
#32 AR-1260-2
 R.T.: 7.279 min
 Delta R.T.: -0.003 min
 Response: 9072191
 Conc: 9.79 ng/ml



#33 AR-1260-3

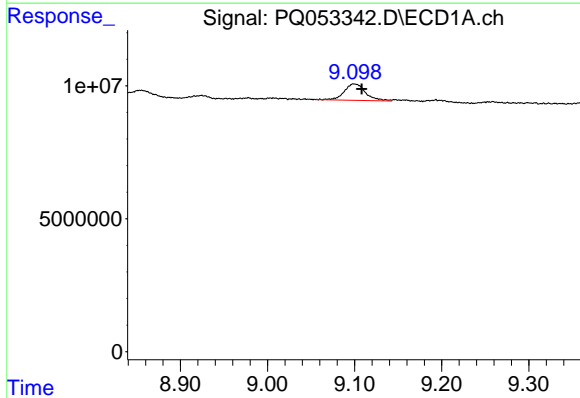
R.T.: 8.855 min
 Delta R.T.: -0.010 min
 Response: 5189743
 Conc: 4.85 ng/ml

Instrument :
 ECD_Q
 ClientSampled :



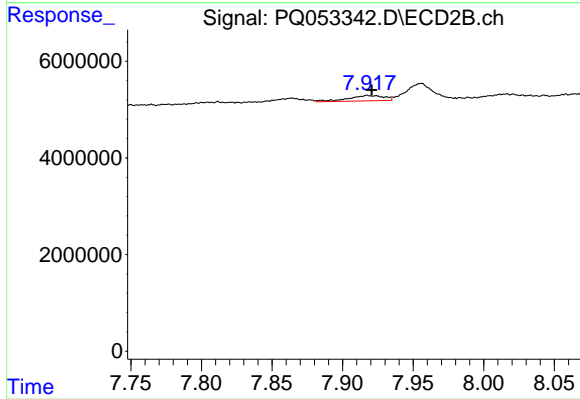
#33 AR-1260-3

R.T.: 7.434 min
 Delta R.T.: -0.004 min
 Response: 7120230
 Conc: 9.15 ng/ml



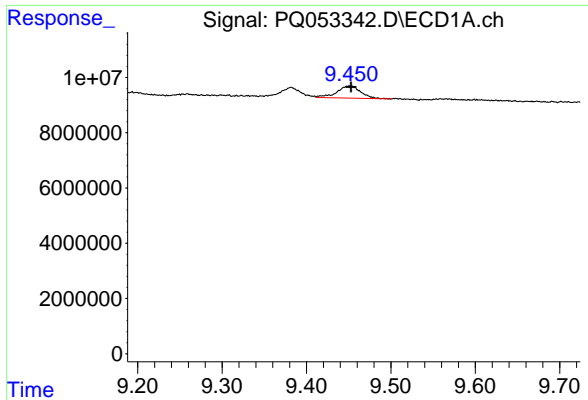
#34 AR-1260-4

R.T.: 9.099 min
 Delta R.T.: -0.009 min
 Response: 10480309
 Conc: 8.66 ng/ml



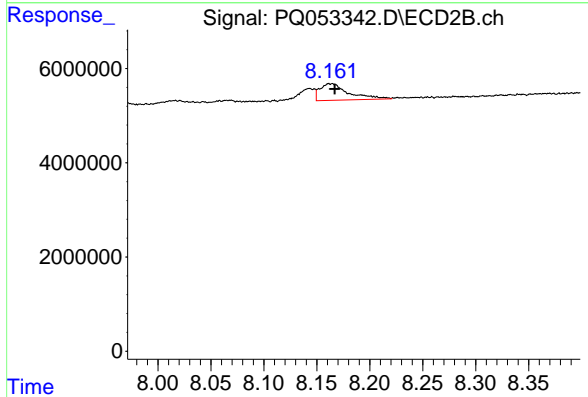
#34 AR-1260-4

R.T.: 7.918 min
 Delta R.T.: -0.003 min
 Response: 1949165
 Conc: 2.87 ng/ml

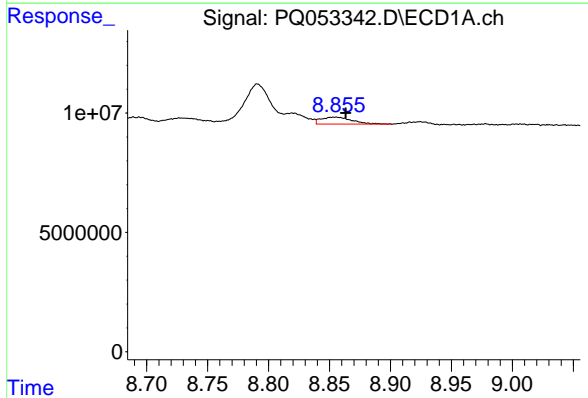


#35 AR-1260-5
 R.T.: 9.452 min
 Delta R.T.: 0.000 min
 Response: 8725327
 Conc: 3.41 ng/ml

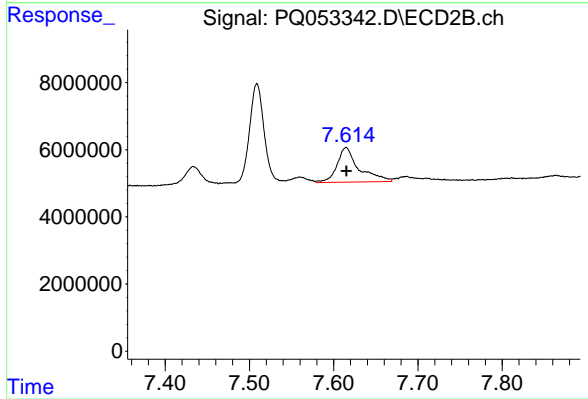
Instrument :
 ECD_Q
 ClientSampleId :



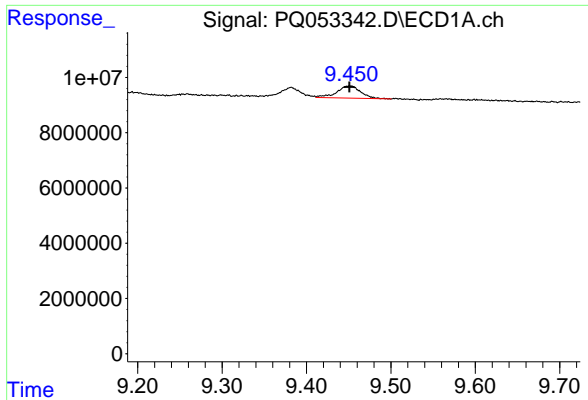
#35 AR-1260-5
 R.T.: 8.163 min
 Delta R.T.: -0.004 min
 Response: 6716024
 Conc: 3.63 ng/ml



#36 AR-1262-1
 R.T.: 8.855 min
 Delta R.T.: -0.008 min
 Response: 5189743
 Conc: 2.59 ng/ml



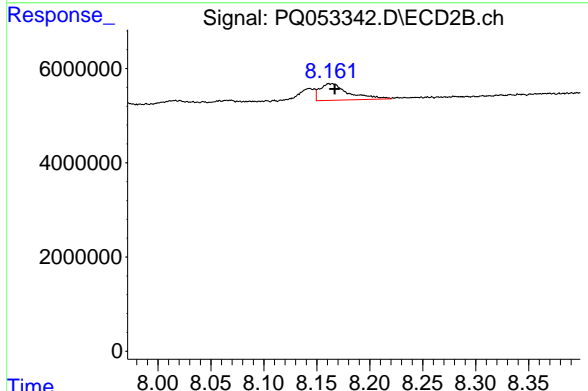
#36 AR-1262-1
 R.T.: 7.615 min
 Delta R.T.: 0.000 min
 Response: 18624519
 Conc: 30.38 ng/ml



#37 AR-1262-2

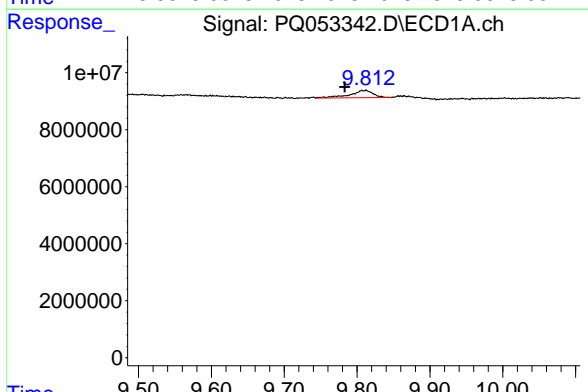
R.T.: 9.452 min
 Delta R.T.: 0.000 min
 Response: 8725327
 Conc: 2.35 ng/ml

Instrument :
 ECD_Q
 ClientSampleId :



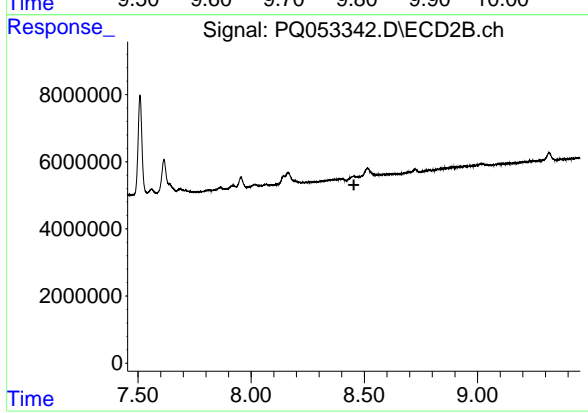
#37 AR-1262-2

R.T.: 8.163 min
 Delta R.T.: -0.004 min
 Response: 6716024
 Conc: 2.64 ng/ml



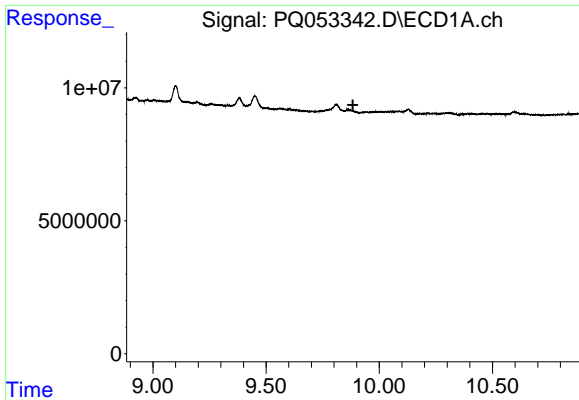
#38 AR-1262-3

R.T.: 9.812 min
 Delta R.T.: 0.029 min
 Response: 5669074
 Conc: 2.26 ng/ml



#38 AR-1262-3

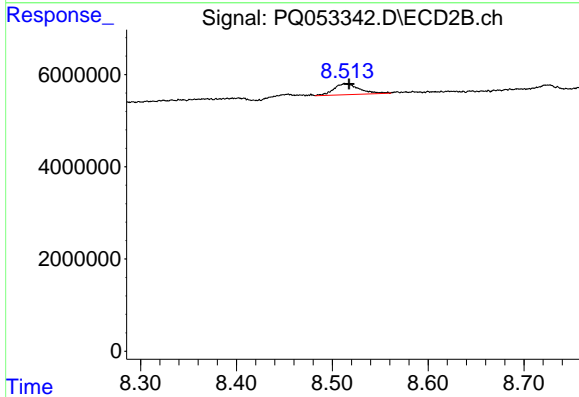
R.T.: 8.454 min
 Delta R.T.: 0.000 min
 Response: -55604
 Conc: N.D.



#39 AR-1262-4

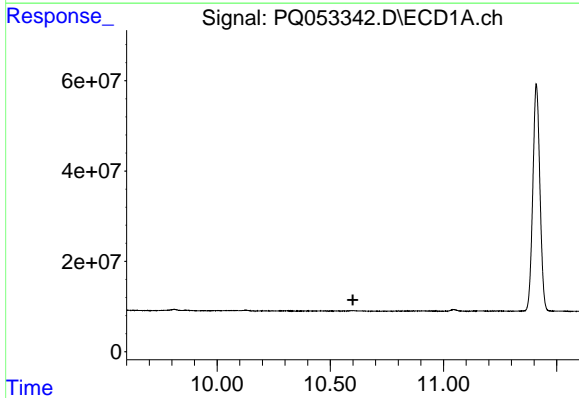
R.T.: 0.000 min
 Exp R.T. : 9.884 min
 Response: 0
 Conc: N.D.

Instrument :
 ECD_Q
 ClientSampleId :



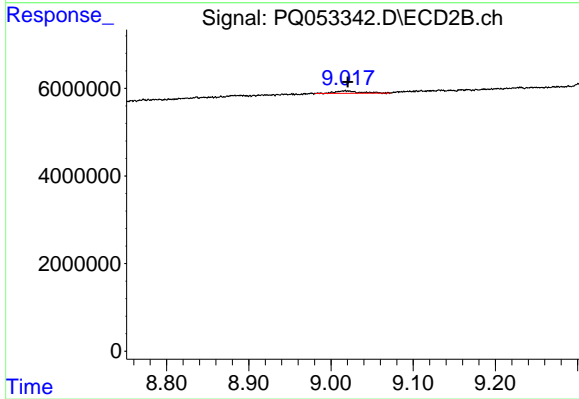
#39 AR-1262-4

R.T.: 8.513 min
 Delta R.T.: -0.004 min
 Response: 4483267
 Conc: 2.60 ng/ml



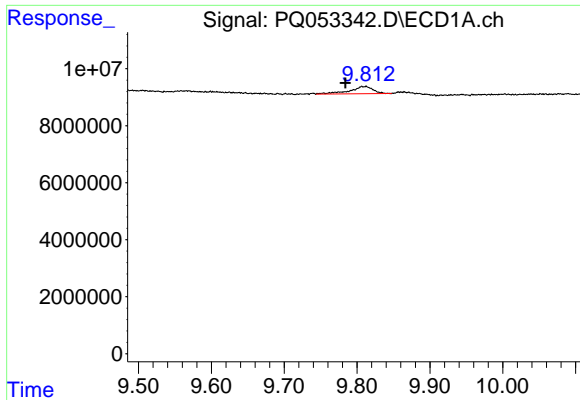
#40 AR-1262-5

R.T.: 0.000 min
 Exp R.T. : 10.600 min
 Response: 0
 Conc: N.D.



#40 AR-1262-5

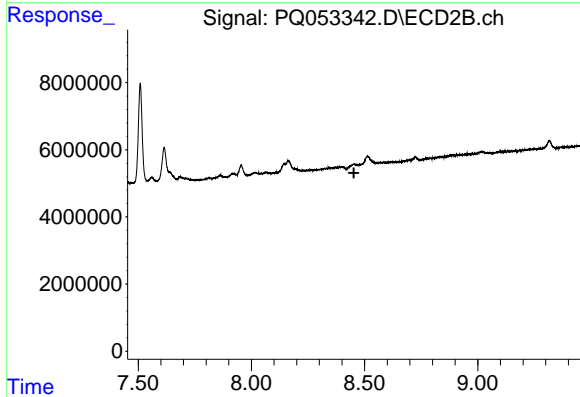
R.T.: 9.017 min
 Delta R.T.: -0.003 min
 Response: 1107576
 Conc: 1.42 ng/ml



#41 AR-1268-1

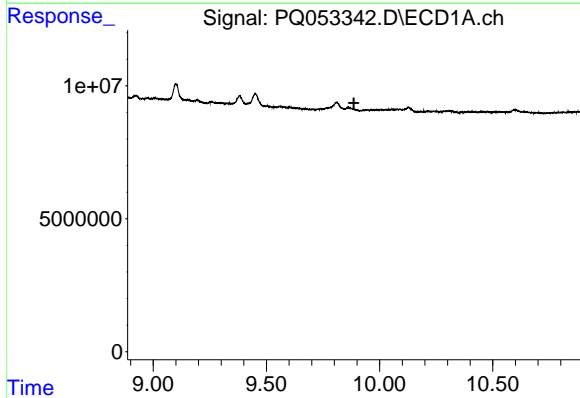
R.T.: 9.812 min
 Delta R.T.: 0.028 min
 Response: 5669074
 Conc: 1.27 ng/ml

Instrument :
 ECD_Q
 ClientSampleId :



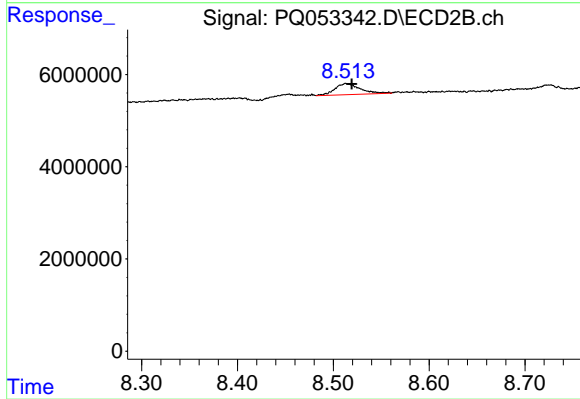
#41 AR-1268-1

R.T.: 8.454 min
 Delta R.T.: 0.001 min
 Response: -55604
 Conc: N.D.



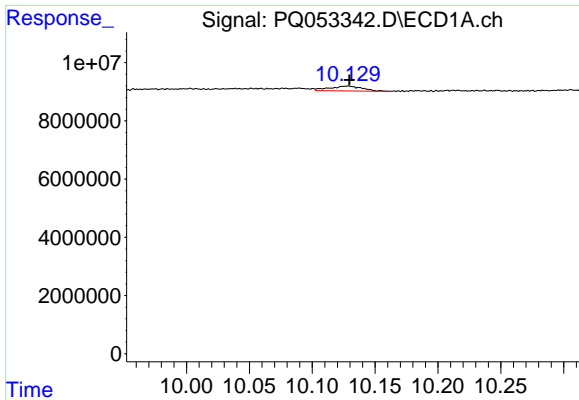
#42 AR-1268-2

R.T.: 0.000 min
 Exp R.T. : 9.886 min
 Response: 0
 Conc: N.D.



#42 AR-1268-2

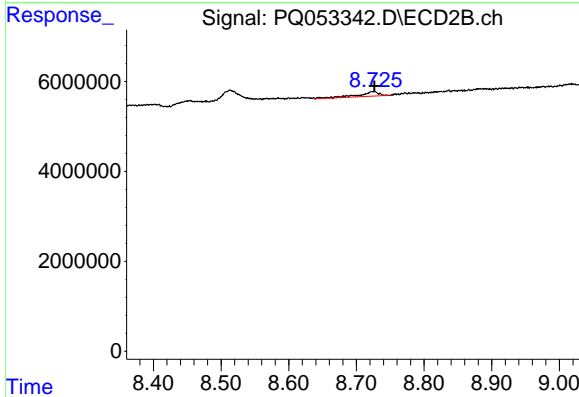
R.T.: 8.513 min
 Delta R.T.: -0.006 min
 Response: 4483267
 Conc: 1.80 ng/ml



#43 AR-1268-3

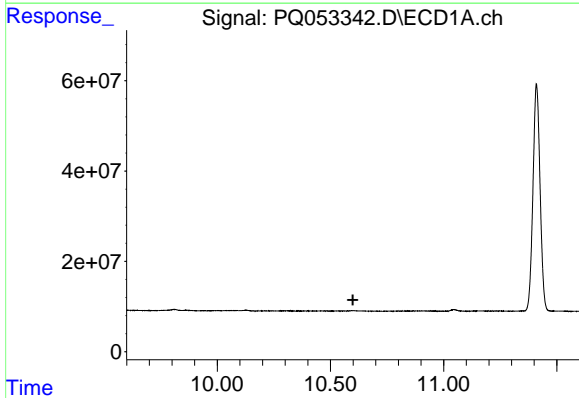
R.T.: 10.129 min
 Delta R.T.: 0.000 min
 Response: 3038014
 Conc: 0.80 ng/ml

Instrument :
 ECD_Q
 ClientSampleId :



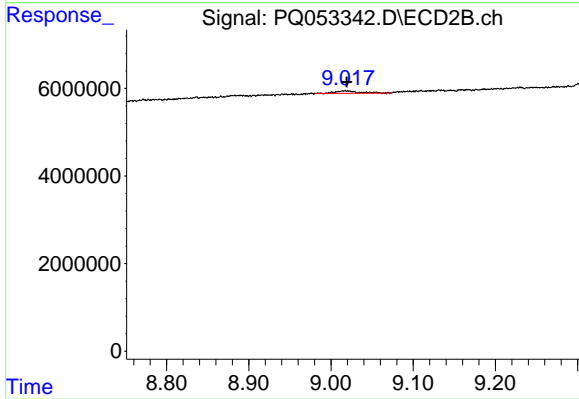
#43 AR-1268-3

R.T.: 8.726 min
 Delta R.T.: -0.001 min
 Response: 2174924
 Conc: 1.00 ng/ml



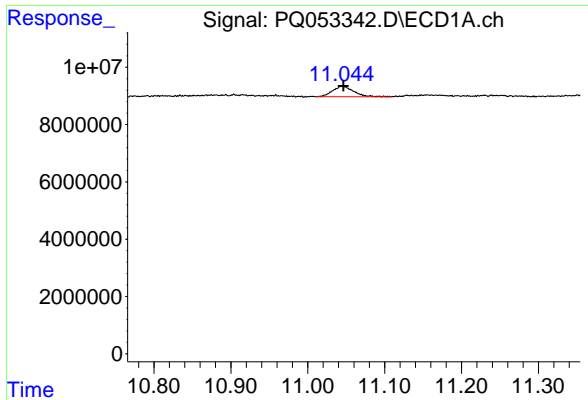
#44 AR-1268-4

R.T.: 0.000 min
 Exp R.T. : 10.599 min
 Response: 0
 Conc: N.D.



#44 AR-1268-4

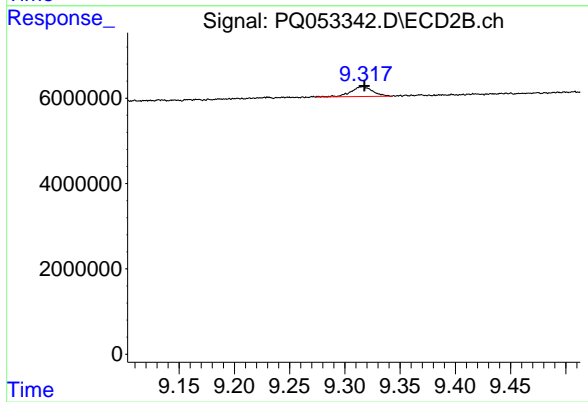
R.T.: 9.017 min
 Delta R.T.: -0.002 min
 Response: 1107576
 Conc: 1.30 ng/ml



#45 AR-1268-5

R.T.: 11.045 min
Delta R.T.: -0.002 min
Response: 6973269
Conc: 0.54 ng/ml

Instrument :
ECD_Q
ClientSampleId :



#45 AR-1268-5

R.T.: 9.316 min
Delta R.T.: -0.002 min
Response: 3152740
Conc: 0.51 ng/ml