

Data Path : Z:\pestpcbsrv\HPCHEM1\ECD\_Q\Data\PQ043021\  
 Data File : PQ053344.D  
 Signal(s) : Signal #1: ECD1A.ch Signal #2: ECD2B.ch  
 Acq On : 30 Apr 2021 23:32  
 Operator : DD\AJ  
 Sample : AR1254CCC400  
 Misc :  
 ALS Vial : 6 Sample Multiplier: 1

Instrument :  
 ECD\_Q  
 ClientSampled :

Integration File signal 1: autoint1.e  
 Integration File signal 2: autoint2.e  
 Quant Time: May 01 04:46:34 2021  
 Quant Method : Z:\pestpcbsrv\HPCHEM1\ECD\_Q\Method\PQ042021CLP.M  
 Quant Title : GC EXTRACTABLES  
 QLast Update : Wed Apr 21 07:47:07 2021  
 Response via : Initial Calibration  
 Integrator: ChemStation

Volume Inj. : 1 µl  
 Signal #1 Phase : ZB MR1 Signal #2 Phase: ZB MR2  
 Signal #1 Info : 30Mx0.32mmx 0.5µm Signal #2 Info : 30M x 0.32mm x 0.25µm

Compound	RT#1	RT#2	Resp#1	Resp#2	ng/ml	ng/ml
-----						
System Monitoring Compounds						
1) SA Tetrachlo...	5.223	4.237	649.4E6	258.1E6	23.146	22.195
2) SA Decachlor...	11.411	9.575	1133.2E6	488.4E6	40.069	39.242
Target Compounds						
3) L1 AR-1016-1	6.547	5.494	17255874	7609075	17.711	17.277
4) L1 AR-1016-2	6.576	5.515	22363237	6708701	15.379	10.604 #
5) L1 AR-1016-3	6.638	5.708	8689872	4382142	9.884	13.288 #
6) L1 AR-1016-4	6.746	5.757	9975300	176.8E6	13.770	678.155 #
7) L1 AR-1016-5	7.060	5.988	219.2E6	93241441	317.411	280.568
9) L2 AR-1221-2	5.577	4.591	8838428	3920118	42.834	44.118
10) L2 AR-1221-3	5.660	4.681	4945238	1834181	7.124	5.939
11) L3 AR-1232-1	5.660	4.681	4945238	1834181	9.522	8.035
12) L3 AR-1232-2	6.252	5.515	7829755	6708701	27.962	27.459
13) L3 AR-1232-3	6.576	5.708	22363237	4382142	39.006	35.831
14) L3 AR-1232-4	6.746	5.802	9975300	50389103	34.877	481.271 #
15) L3 AR-1232-5	6.840	5.988	373.2E6	93241441	1829.078	794.943 #
16) L4 AR-1242-1	6.547	5.494	17255874	7609075	19.030	18.983
17) L4 AR-1242-2	6.576	5.515	22363237	6708701	16.466	11.502 #
18) L4 AR-1242-3	6.638	5.708	8689872	4382142	10.530	14.465 #
19) L4 AR-1242-4	6.746	5.802	9975300	50389103	14.560	177.146 #
20) L4 AR-1242-5	7.530	6.367	204.2E6	471.8E6	279.898	1190.954 #
21) L5 AR-1248-1	6.547	5.494	17255874	7609075	27.887	27.936
22) L5 AR-1248-2	6.840	5.757	373.2E6	176.8E6	427.947	475.414
23) L5 AR-1248-3	7.060	5.802	219.2E6	50389103	223.655	131.979 #
24) L5 AR-1248-4	7.488	5.988	332.4E6	93241441	290.880	199.451 #
25) L5 AR-1248-5	7.530	6.411	204.2E6	52983695	179.171	107.678 #
26) L6 AR-1254-1	7.457	6.367	658.1E6	471.8E6	418.655	440.038
27) L6 AR-1254-2	7.686	6.526	1006.2E6	415.9E6	411.001	436.010
28) L6 AR-1254-3	8.069	6.947	1056.3E6	674.3E6	401.387	435.365
29) L6 AR-1254-4	8.365	7.186	760.2E6	456.2E6	394.990	435.665
30) L6 AR-1254-5	8.793	7.615	805.6E6	612.4E6	393.802	419.657
31) L7 AR-1260-1	8.235	7.085	384.4E6	315.2E6	333.873	486.382 #
32) L7 AR-1260-2	8.497	7.280	452.2E6	307.5E6	324.554	331.691
33) L7 AR-1260-3	8.856	7.434	104.3E6	263.2E6	97.448	338.236 #
34) L7 AR-1260-4	9.101	7.919	303.9E6	27902394	250.956	41.099 #
35) L7 AR-1260-5	9.451	8.165	145.0E6	80012071	56.684	43.248
36) L8 AR-1262-1	8.856	7.615	104.3E6	612.4E6	52.167	998.978 #
37) L8 AR-1262-2	9.451	8.165	145.0E6	80012071	39.083	31.488
38) L8 AR-1262-3	9.811	8.453	92505721	4016997	36.860	3.954 #
39) L8 AR-1262-4	9.865	8.512	27019517	65654730	13.519	38.110 #
40) L8 AR-1262-5	10.600	9.019	9366290	3585555	6.608	4.606 #
41) L9 AR-1268-1	9.811	8.453	92505721	4016997	20.791	1.372 #
42) L9 AR-1268-2	9.865	8.512	27019517	65654730	6.302	26.370 #

Data Path : Z:\pestpcbsrv\HPCHEM1\ECD\_Q\Data\PQ043021\  
 Data File : PQ053344.D  
 Signal(s) : Signal #1: ECD1A.ch Signal #2: ECD2B.ch  
 Acq On : 30 Apr 2021 23:32  
 Operator : DD\AJ  
 Sample : AR1254CCC400  
 Misc :  
 ALS Vial : 6 Sample Multiplier: 1

Instrument :  
 ECD\_Q  
 ClientSampleId :

Integration File signal 1: autoint1.e  
 Integration File signal 2: autoint2.e  
 Quant Time: May 01 04:46:34 2021  
 Quant Method : Z:\pestpcbsrv\HPCHEM1\ECD\_Q\Method\PQ042021CLP.M  
 Quant Title : GC EXTRACTABLES  
 QLast Update : Wed Apr 21 07:47:07 2021  
 Response via : Initial Calibration  
 Integrator: ChemStation

Volume Inj. : 1 µl  
 Signal #1 Phase : ZB MR1 Signal #2 Phase: ZB MR2  
 Signal #1 Info : 30Mx0.32mmx 0.5µm Signal #2 Info : 30M x 0.32mm x 0.25µm

	Compound	RT#1	RT#2	Resp#1	Resp#2	ng/ml	ng/ml
43)	L9 AR-1268-3	10.131	8.725	2582976	2524712	0.679	1.165 #
44)	L9 AR-1268-4	10.600	9.019	9366290	3585555	6.084	4.203 #
45)	L9 AR-1268-5	11.047	9.316	9948330	4017967	0.772	0.648

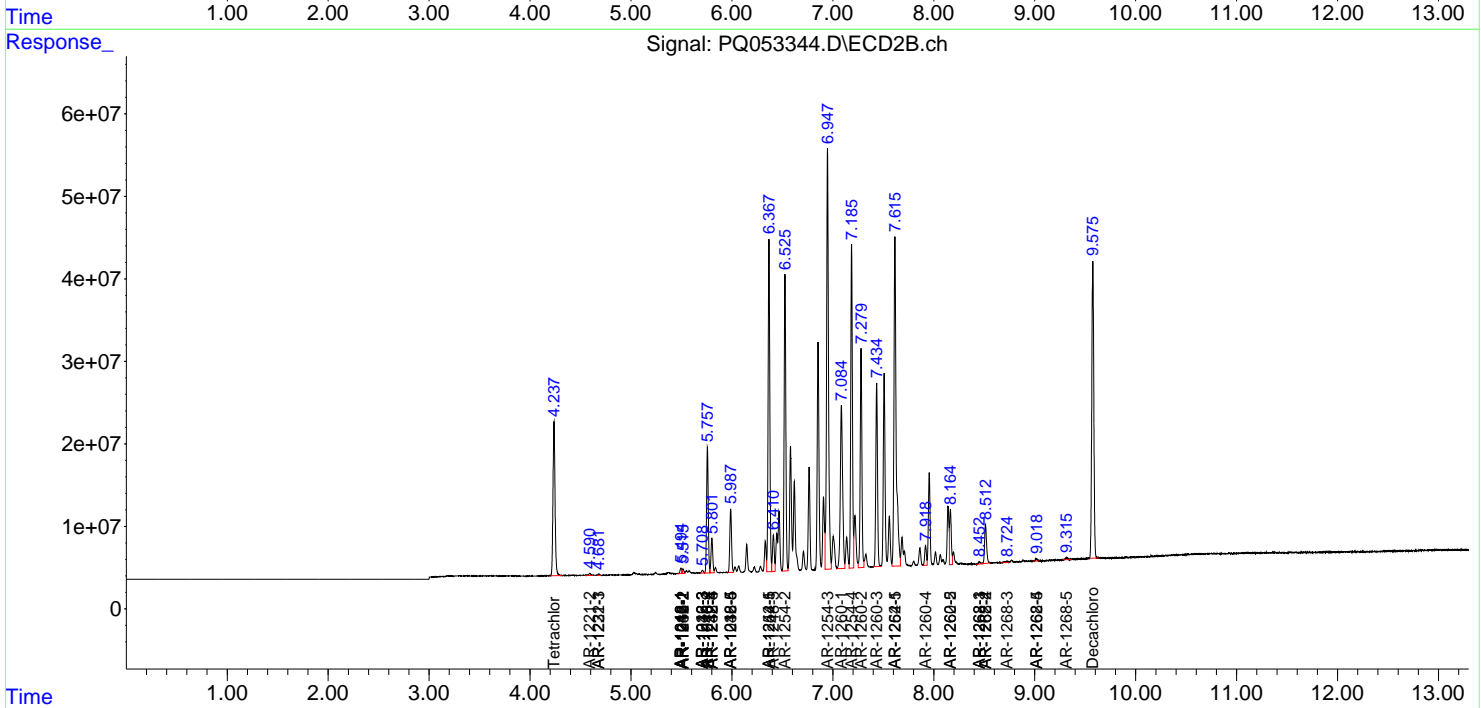
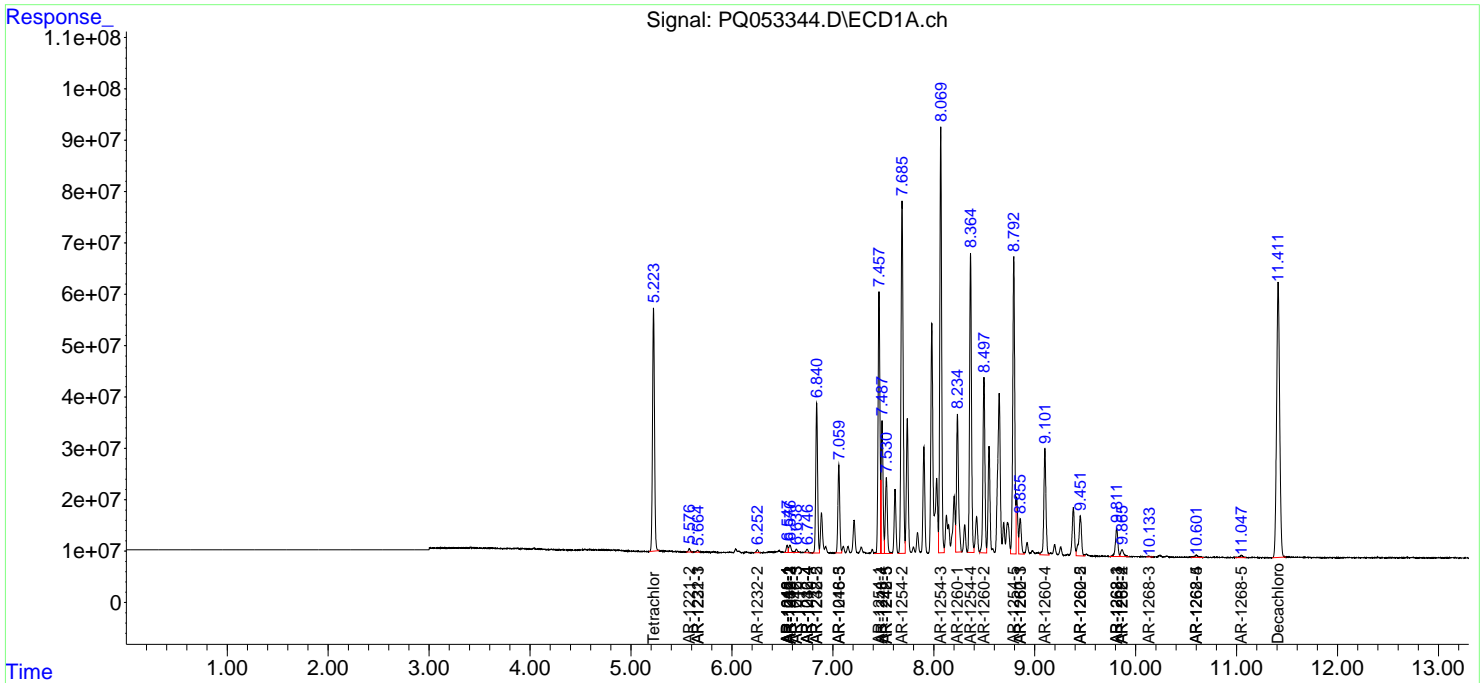
(f)=RT Delta > 1/2 Window (#)=Amounts differ by > 25% (m)=manual int.

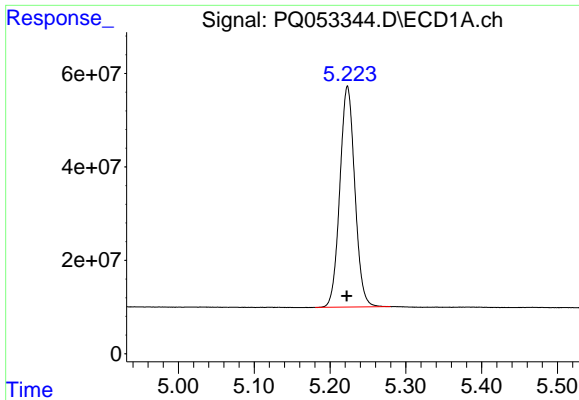
Data Path : Z:\pestpcbsrv\HPCHEM1\ECD\_Q\Data\PQ043021\  
 Data File : PQ053344.D  
 Signal(s) : Signal #1: ECD1A.ch Signal #2: ECD2B.ch  
 Acq On : 30 Apr 2021 23:32  
 Operator : DD\AJ  
 Sample : AR1254CCC400  
 Misc :  
 ALS Vial : 6 Sample Multiplier: 1

Instrument :  
 ECD\_Q  
 ClientSampled :

Integration File signal 1: autoint1.e  
 Integration File signal 2: autoint2.e  
 Quant Time: May 01 04:46:34 2021  
 Quant Method : Z:\pestpcbsrv\HPCHEM1\ECD\_Q\Method\PQ042021CLP.M  
 Quant Title : GC EXTRACTABLES  
 QLast Update : Wed Apr 21 07:47:07 2021  
 Response via : Initial Calibration  
 Integrator: ChemStation

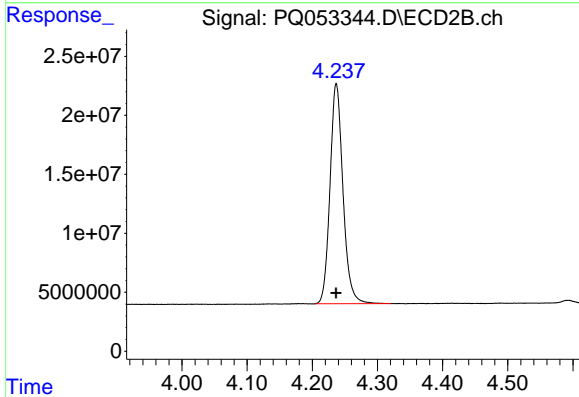
Volume Inj. : 1 µl  
 Signal #1 Phase : ZB MR1 Signal #2 Phase: ZB MR2  
 Signal #1 Info : 30Mx0.32mmx 0.5µm Signal #2 Info : 30M x 0.32mm x 0.25µm



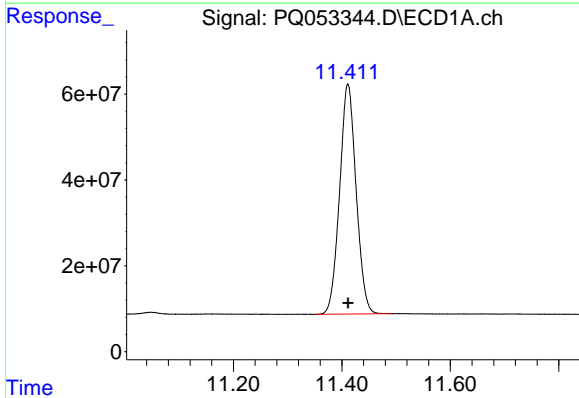


#1 Tetrachloro-m-xylene  
 R.T.: 5.223 min  
 Delta R.T.: 0.001 min  
 Response: 649441023  
 Conc: 23.15 ng/ml

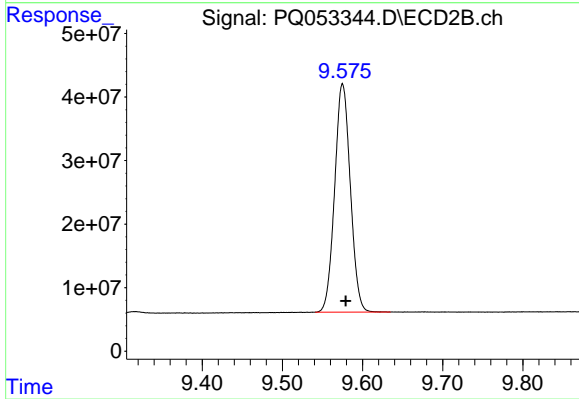
Instrument :  
 ECD\_Q  
 ClientSampleId :



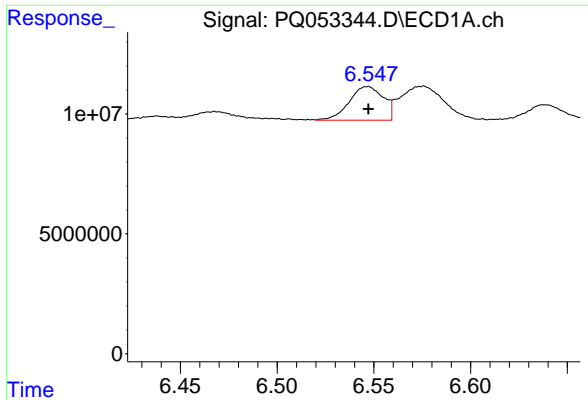
#1 Tetrachloro-m-xylene  
 R.T.: 4.237 min  
 Delta R.T.: 0.000 min  
 Response: 258097108  
 Conc: 22.20 ng/ml



#2 Decachlorobiphenyl  
 R.T.: 11.411 min  
 Delta R.T.: 0.000 min  
 Response: 1133231537  
 Conc: 40.07 ng/ml



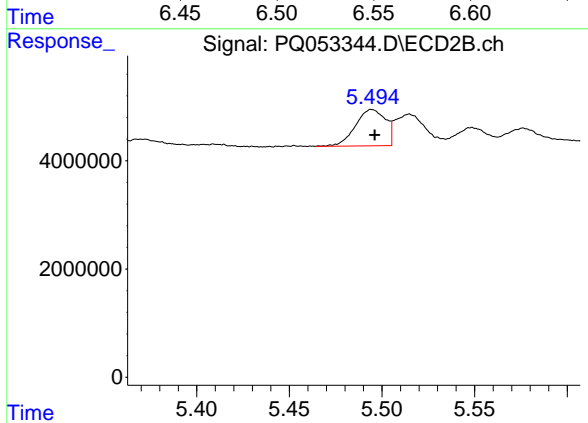
#2 Decachlorobiphenyl  
 R.T.: 9.575 min  
 Delta R.T.: -0.004 min  
 Response: 488415107  
 Conc: 39.24 ng/ml



#3 AR-1016-1

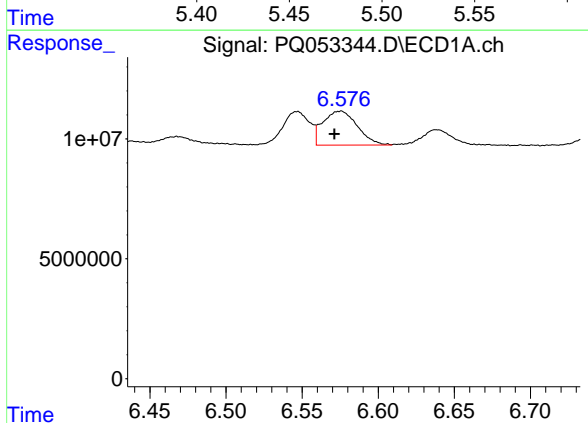
R.T.: 6.547 min  
 Delta R.T.: 0.000 min  
 Response: 17255874  
 Conc: 17.71 ng/ml

Instrument :  
 ECD\_Q  
 ClientSampleId :



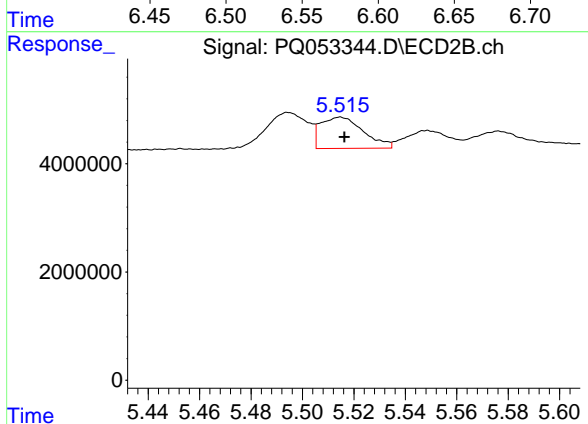
#3 AR-1016-1

R.T.: 5.494 min  
 Delta R.T.: -0.002 min  
 Response: 7609075  
 Conc: 17.28 ng/ml



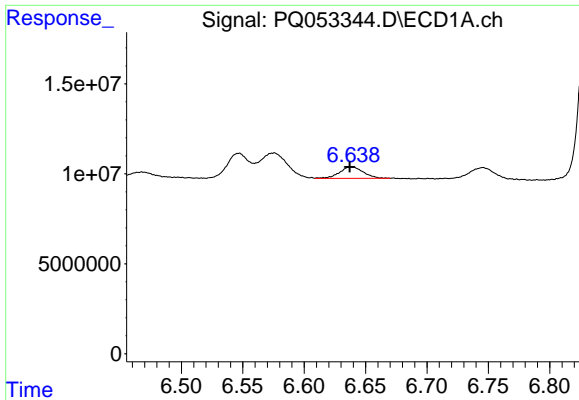
#4 AR-1016-2

R.T.: 6.576 min  
 Delta R.T.: 0.005 min  
 Response: 22363237  
 Conc: 15.38 ng/ml



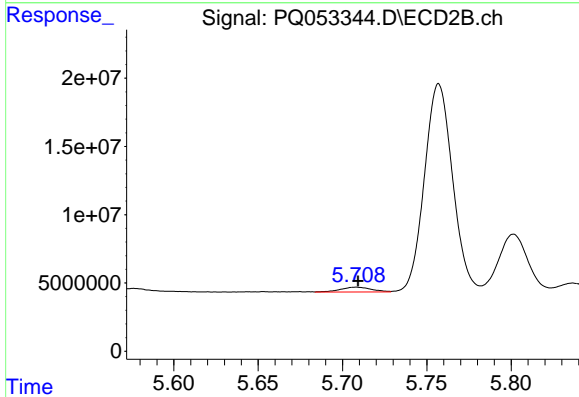
#4 AR-1016-2

R.T.: 5.515 min  
 Delta R.T.: -0.002 min  
 Response: 6708701  
 Conc: 10.60 ng/ml

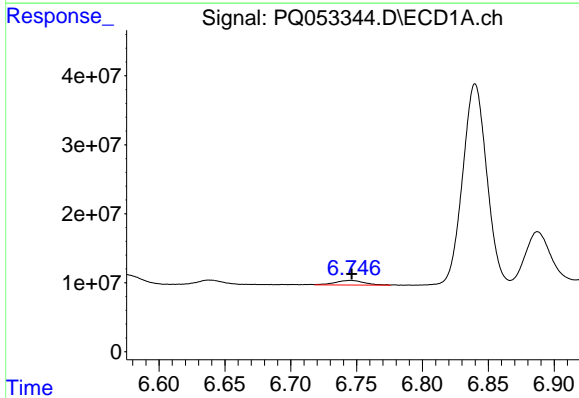


#5 AR-1016-3  
 R.T.: 6.638 min  
 Delta R.T.: 0.000 min  
 Response: 8689872  
 Conc: 9.88 ng/ml

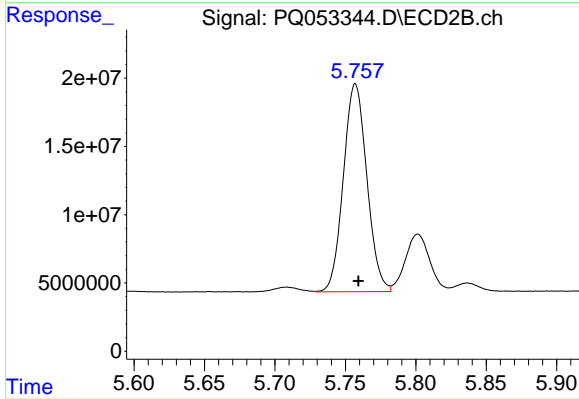
Instrument :  
 ECD\_Q  
 ClientSampleId :



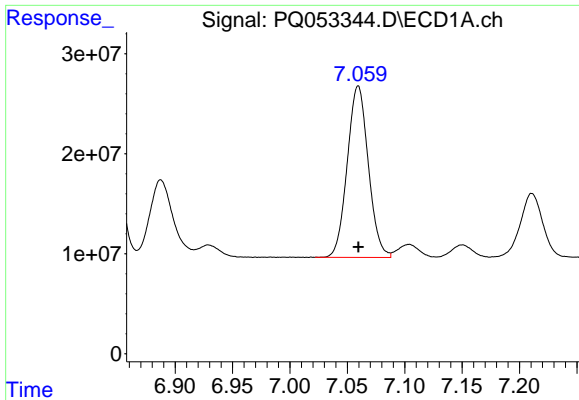
#5 AR-1016-3  
 R.T.: 5.708 min  
 Delta R.T.: -0.001 min  
 Response: 4382142  
 Conc: 13.29 ng/ml



#6 AR-1016-4  
 R.T.: 6.746 min  
 Delta R.T.: 0.000 min  
 Response: 9975300  
 Conc: 13.77 ng/ml

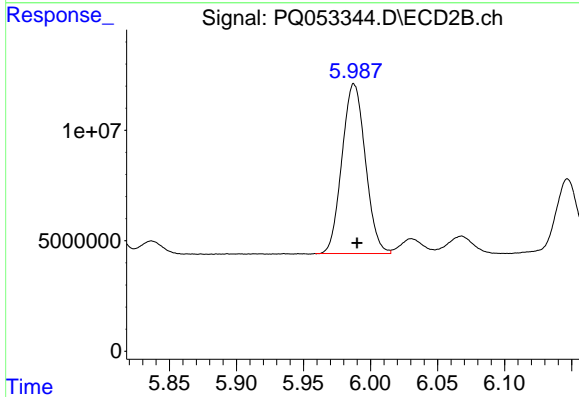


#6 AR-1016-4  
 R.T.: 5.757 min  
 Delta R.T.: -0.002 min  
 Response: 176770737  
 Conc: 678.15 ng/ml

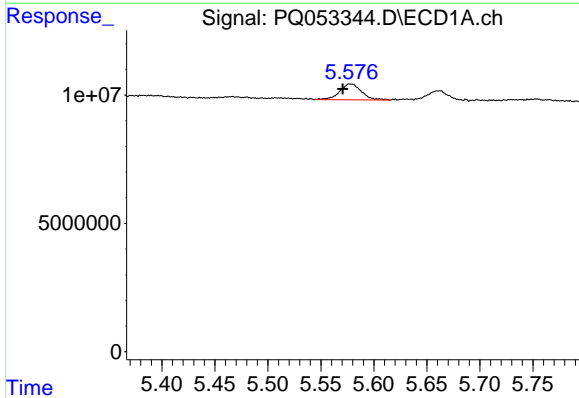


#7 AR-1016-5  
 R.T.: 7.060 min  
 Delta R.T.: 0.000 min  
 Response: 21923397  
 Conc: 317.41 ng/ml

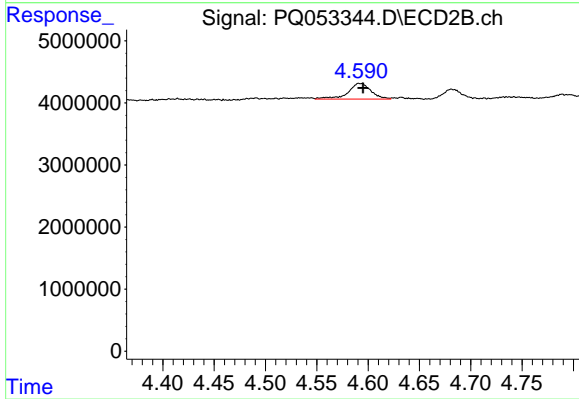
Instrument :  
 ECD\_Q  
 ClientSampleId :



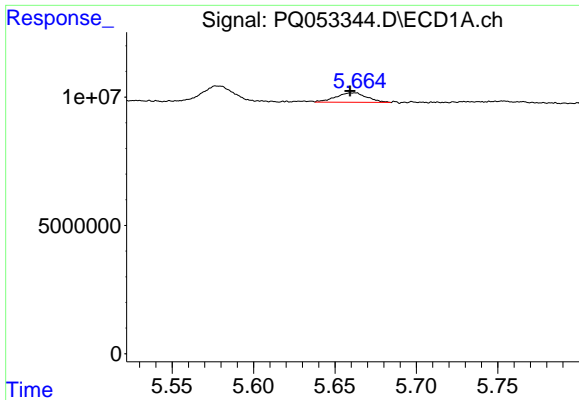
#7 AR-1016-5  
 R.T.: 5.988 min  
 Delta R.T.: -0.003 min  
 Response: 93241441  
 Conc: 280.57 ng/ml



#9 AR-1221-2  
 R.T.: 5.577 min  
 Delta R.T.: 0.006 min  
 Response: 8838428  
 Conc: 42.83 ng/ml



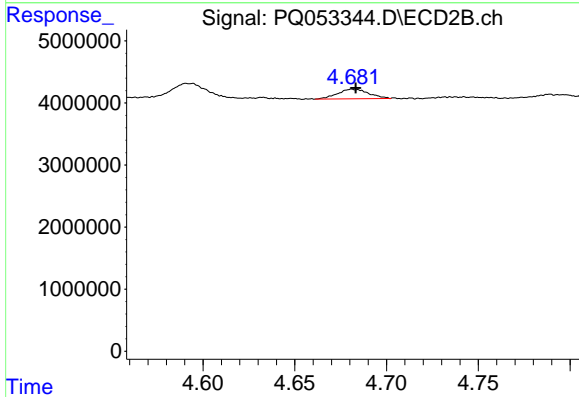
#9 AR-1221-2  
 R.T.: 4.591 min  
 Delta R.T.: -0.004 min  
 Response: 3920118  
 Conc: 44.12 ng/ml



#10 AR-1221-3

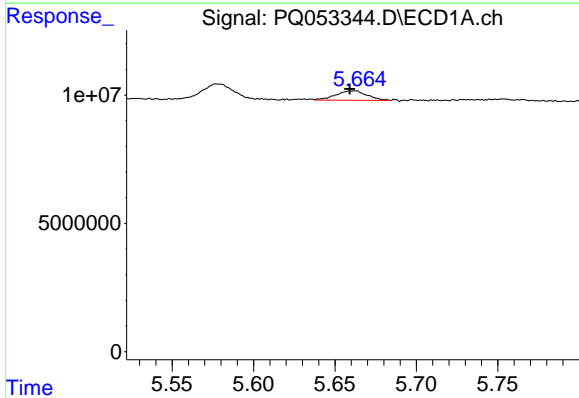
R.T.: 5.660 min  
 Delta R.T.: 0.000 min  
 Response: 4945238  
 Conc: 7.12 ng/ml

Instrument :  
 ECD\_Q  
 ClientSampleId :



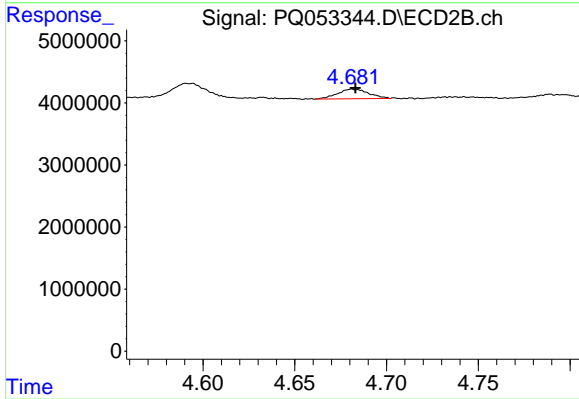
#10 AR-1221-3

R.T.: 4.681 min  
 Delta R.T.: -0.002 min  
 Response: 1834181  
 Conc: 5.94 ng/ml



#11 AR-1232-1

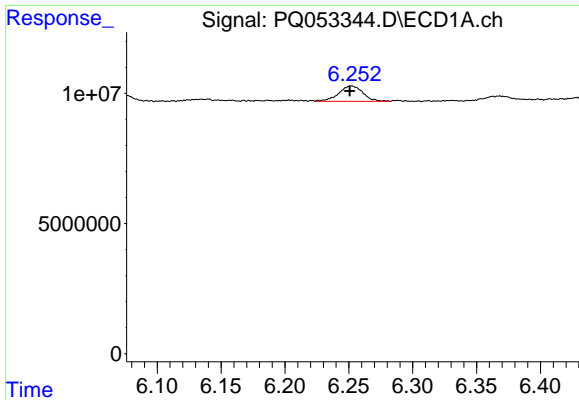
R.T.: 5.660 min  
 Delta R.T.: 0.000 min  
 Response: 4945238  
 Conc: 9.52 ng/ml



#11 AR-1232-1

R.T.: 4.681 min  
 Delta R.T.: -0.002 min  
 Response: 1834181  
 Conc: 8.03 ng/ml

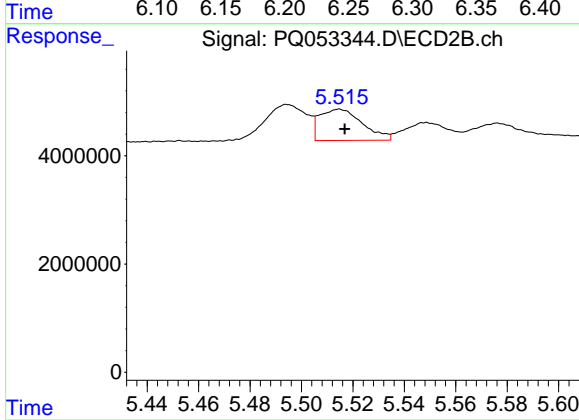




#12 AR-1232-2

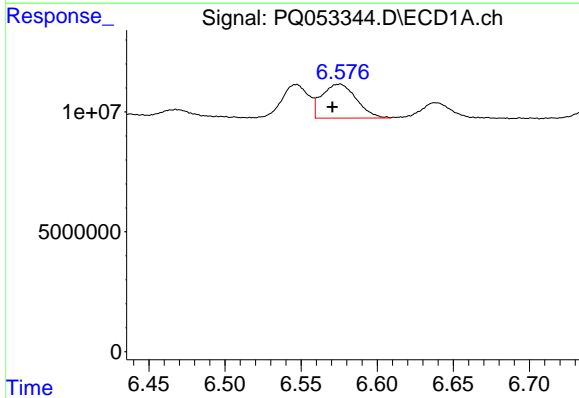
R.T.: 6.252 min  
 Delta R.T.: 0.002 min  
 Response: 7829755  
 Conc: 27.96 ng/ml

Instrument :  
 ECD\_Q  
 ClientSampleId :



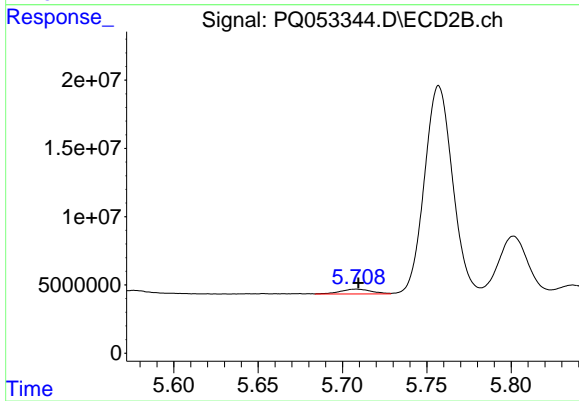
#12 AR-1232-2

R.T.: 5.515 min  
 Delta R.T.: -0.002 min  
 Response: 6708701  
 Conc: 27.46 ng/ml



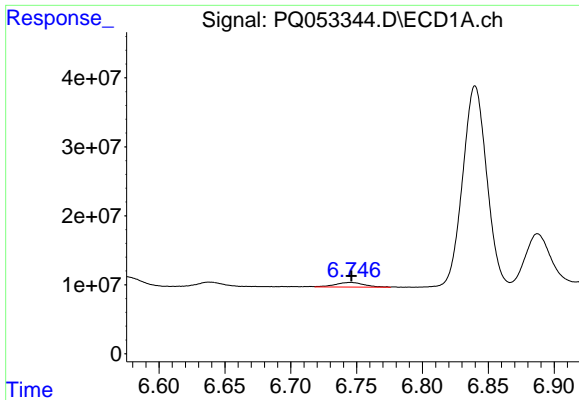
#13 AR-1232-3

R.T.: 6.576 min  
 Delta R.T.: 0.005 min  
 Response: 22363237  
 Conc: 39.01 ng/ml



#13 AR-1232-3

R.T.: 5.708 min  
 Delta R.T.: -0.001 min  
 Response: 4382142  
 Conc: 35.83 ng/ml

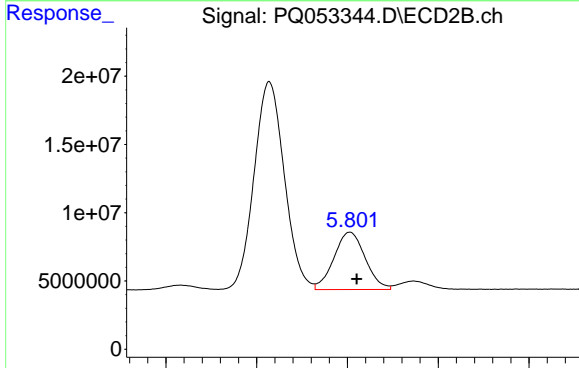


#14 AR-1232-4

R.T.: 6.746 min  
 Delta R.T.: 0.000 min  
 Response: 9975300  
 Conc: 34.88 ng/ml

Instrument :  
 ECD\_Q  
 ClientSampled :

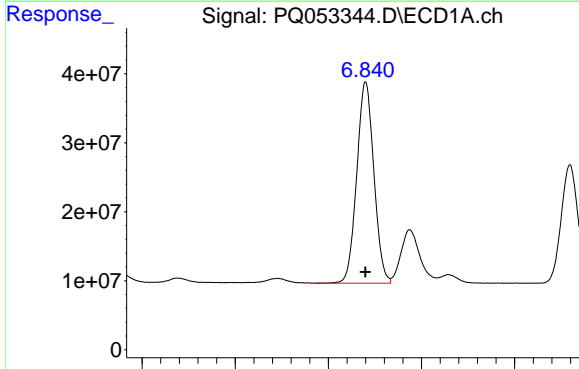
Time 6.60 6.65 6.70 6.75 6.80 6.85 6.90



#14 AR-1232-4

R.T.: 5.802 min  
 Delta R.T.: -0.004 min  
 Response: 50389103  
 Conc: 481.27 ng/ml

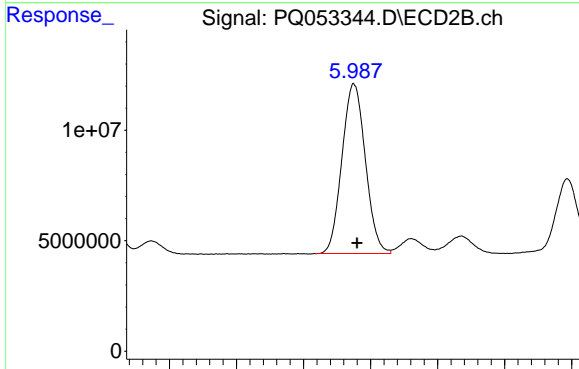
Time 5.70 5.75 5.80 5.85 5.90



#15 AR-1232-5

R.T.: 6.840 min  
 Delta R.T.: 0.000 min  
 Response: 373246481  
 Conc: 1829.08 ng/ml

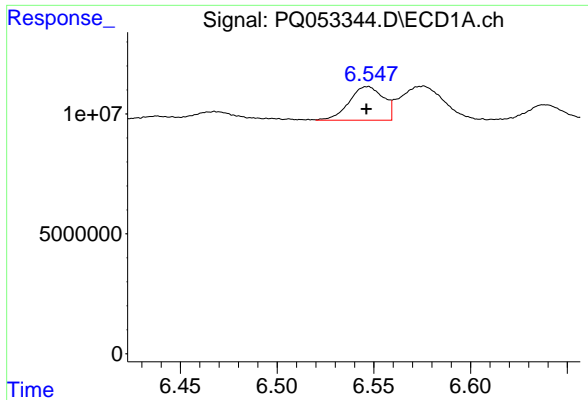
Time 6.60 6.70 6.80 6.90 7.00



#15 AR-1232-5

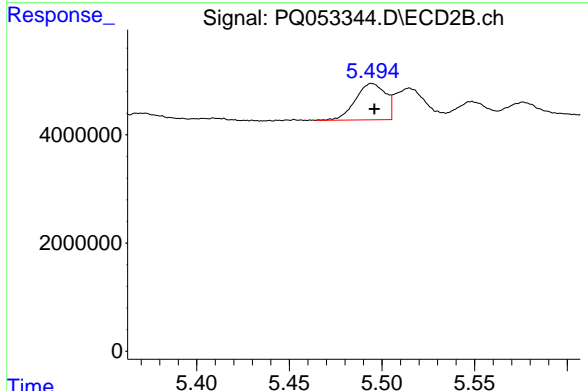
R.T.: 5.988 min  
 Delta R.T.: -0.002 min  
 Response: 93241441  
 Conc: 794.94 ng/ml

Time 5.85 5.90 5.95 6.00 6.05 6.10

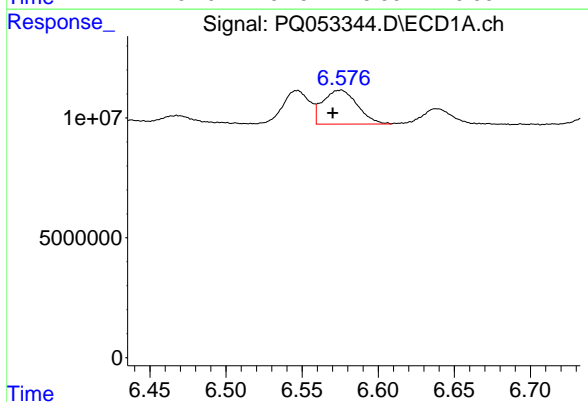


#16 AR-1242-1  
 R.T.: 6.547 min  
 Delta R.T.: 0.000 min  
 Response: 17255874  
 Conc: 19.03 ng/ml

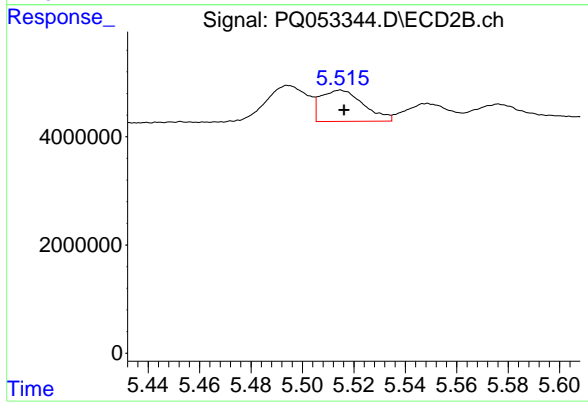
Instrument :  
 ECD\_Q  
 ClientSampleId :



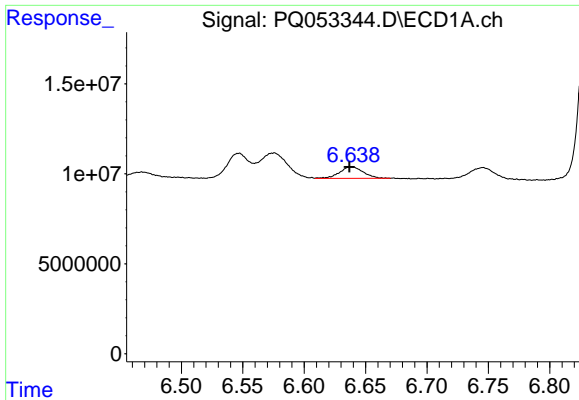
#16 AR-1242-1  
 R.T.: 5.494 min  
 Delta R.T.: -0.002 min  
 Response: 7609075  
 Conc: 18.98 ng/ml



#17 AR-1242-2  
 R.T.: 6.576 min  
 Delta R.T.: 0.006 min  
 Response: 22363237  
 Conc: 16.47 ng/ml



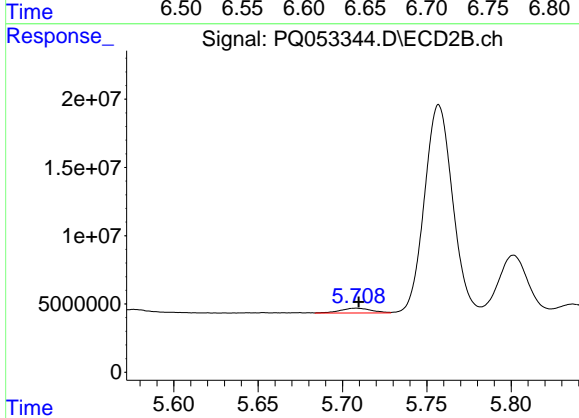
#17 AR-1242-2  
 R.T.: 5.515 min  
 Delta R.T.: -0.001 min  
 Response: 6708701  
 Conc: 11.50 ng/ml



#18 AR-1242-3

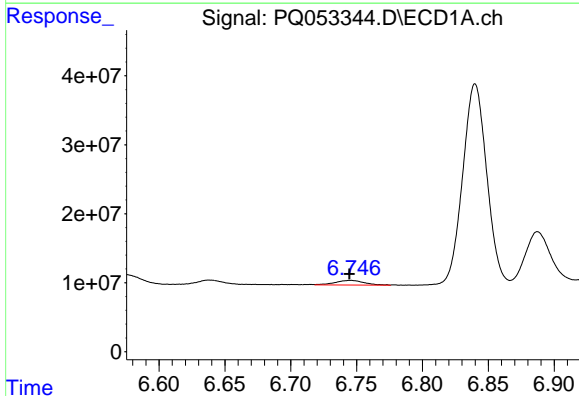
R.T.: 6.638 min  
 Delta R.T.: 0.001 min  
 Response: 8689872  
 Conc: 10.53 ng/ml

Instrument :  
 ECD\_Q  
 ClientSampled :



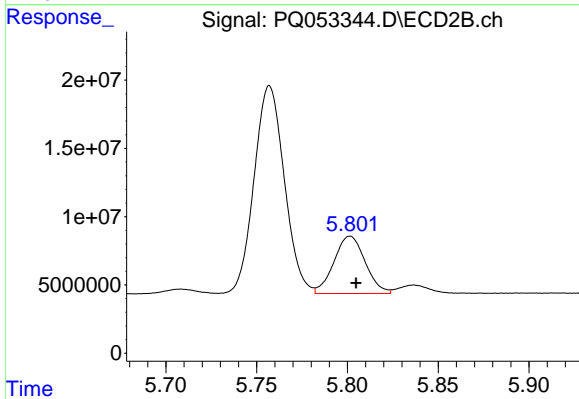
#18 AR-1242-3

R.T.: 5.708 min  
 Delta R.T.: -0.002 min  
 Response: 4382142  
 Conc: 14.47 ng/ml



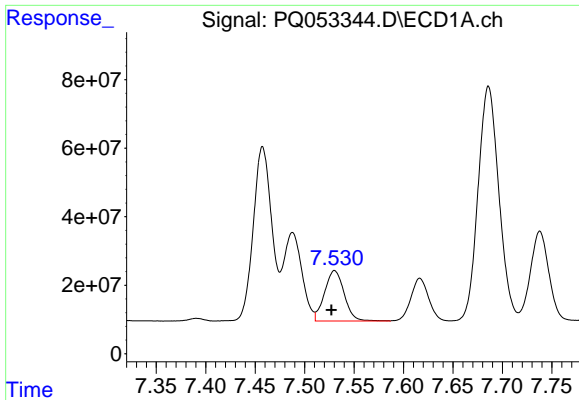
#19 AR-1242-4

R.T.: 6.746 min  
 Delta R.T.: 0.001 min  
 Response: 9975300  
 Conc: 14.56 ng/ml



#19 AR-1242-4

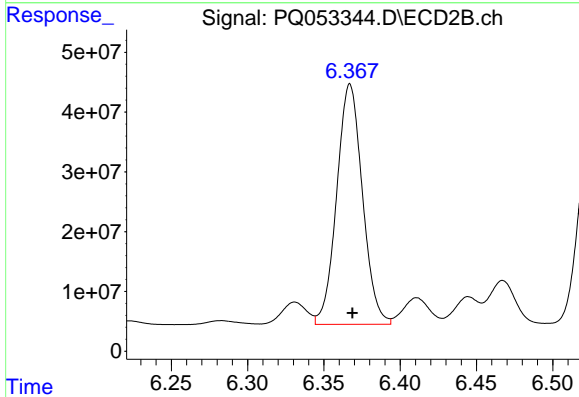
R.T.: 5.802 min  
 Delta R.T.: -0.003 min  
 Response: 50389103  
 Conc: 177.15 ng/ml



#20 AR-1242-5

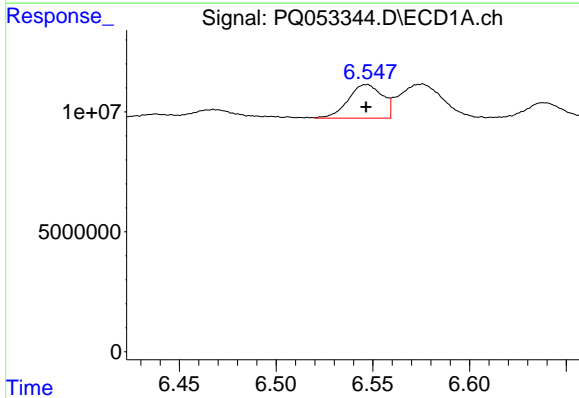
R.T.: 7.530 min  
 Delta R.T.: 0.003 min  
 Response: 204189153  
 Conc: 279.90 ng/ml

Instrument :  
 ECD\_Q  
 ClientSampleId :



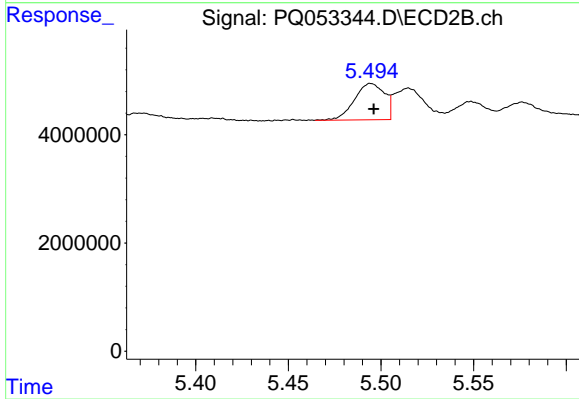
#20 AR-1242-5

R.T.: 6.367 min  
 Delta R.T.: -0.002 min  
 Response: 471823043  
 Conc: 1190.95 ng/ml



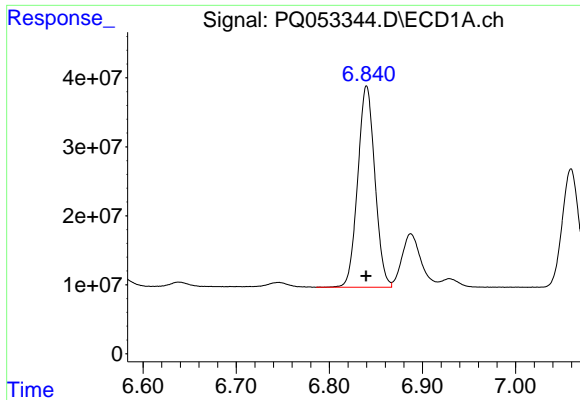
#21 AR-1248-1

R.T.: 6.547 min  
 Delta R.T.: 0.000 min  
 Response: 17255874  
 Conc: 27.89 ng/ml



#21 AR-1248-1

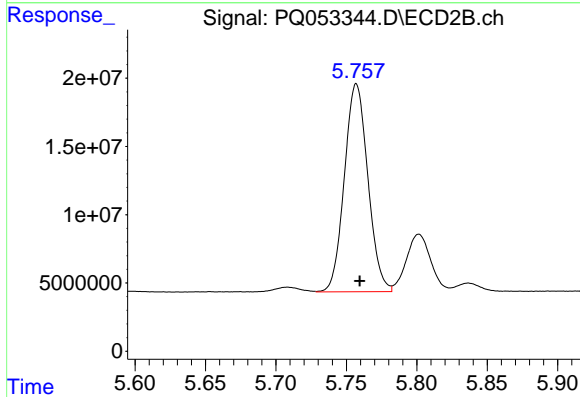
R.T.: 5.494 min  
 Delta R.T.: -0.002 min  
 Response: 7609075  
 Conc: 27.94 ng/ml



#22 AR-1248-2

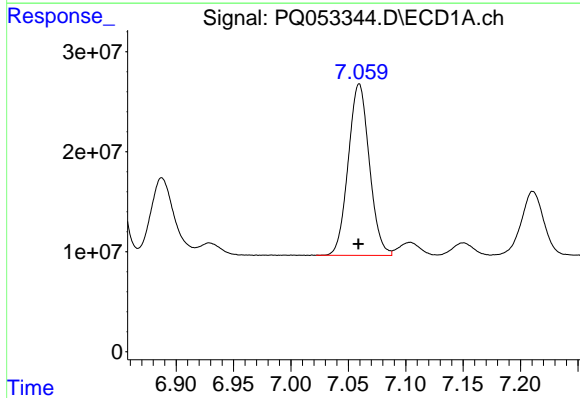
R.T.: 6.840 min  
 Delta R.T.: 0.000 min  
 Response: 373246481  
 Conc: 427.95 ng/ml

Instrument :  
 ECD\_Q  
 ClientSampled :



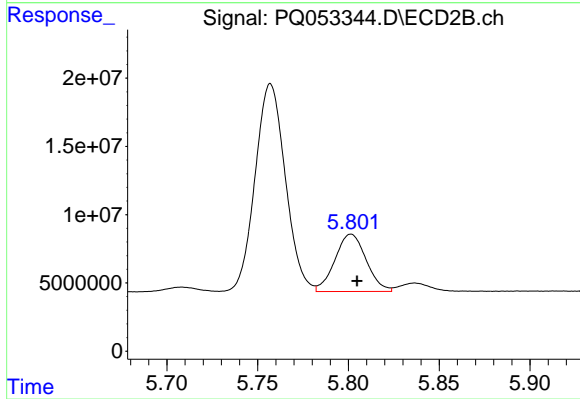
#22 AR-1248-2

R.T.: 5.757 min  
 Delta R.T.: -0.002 min  
 Response: 176770737  
 Conc: 475.41 ng/ml



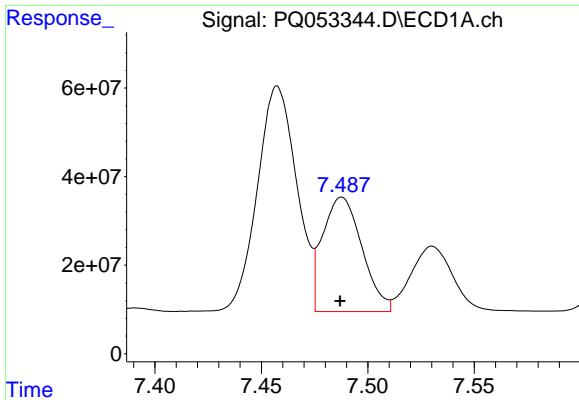
#23 AR-1248-3

R.T.: 7.060 min  
 Delta R.T.: 0.000 min  
 Response: 219233397  
 Conc: 223.65 ng/ml



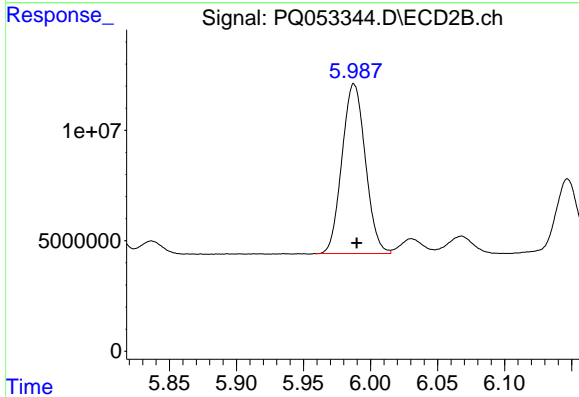
#23 AR-1248-3

R.T.: 5.802 min  
 Delta R.T.: -0.003 min  
 Response: 50389103  
 Conc: 131.98 ng/ml

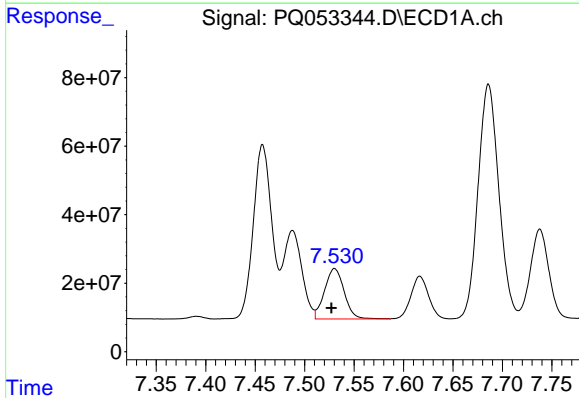


#24 AR-1248-4  
 R.T.: 7.488 min  
 Delta R.T.: 0.000 min  
 Response: 332396733  
 Conc: 290.88 ng/ml

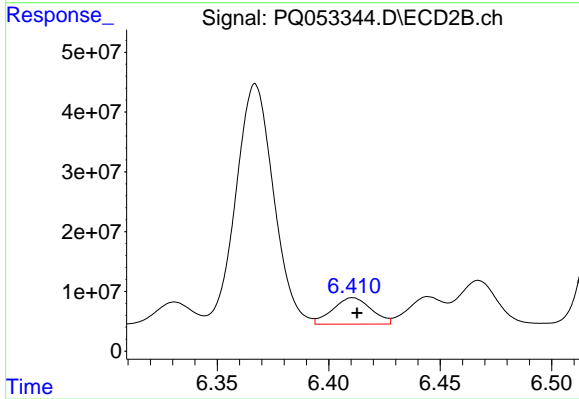
Instrument :  
 ECD\_Q  
 ClientSampleId :



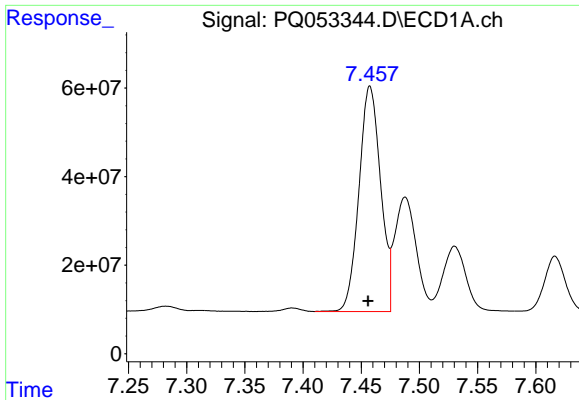
#24 AR-1248-4  
 R.T.: 5.988 min  
 Delta R.T.: -0.002 min  
 Response: 93241441  
 Conc: 199.45 ng/ml



#25 AR-1248-5  
 R.T.: 7.530 min  
 Delta R.T.: 0.003 min  
 Response: 204189153  
 Conc: 179.17 ng/ml



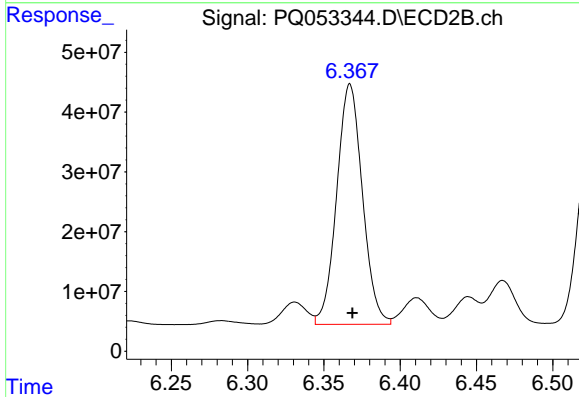
#25 AR-1248-5  
 R.T.: 6.411 min  
 Delta R.T.: -0.002 min  
 Response: 52983695  
 Conc: 107.68 ng/ml



#26 AR-1254-1

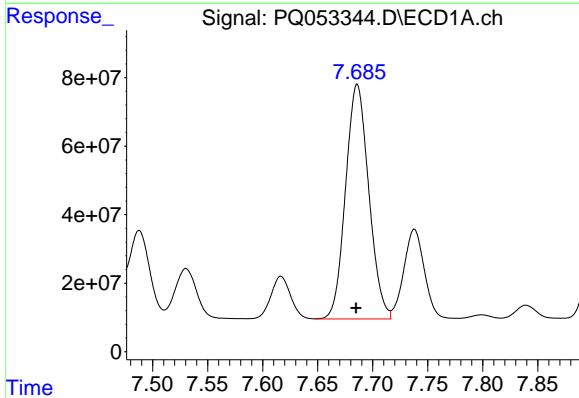
R.T.: 7.457 min  
 Delta R.T.: 0.002 min  
 Response: 658147448  
 Conc: 418.65 ng/ml

Instrument :  
 ECD\_Q  
 ClientSampleId :



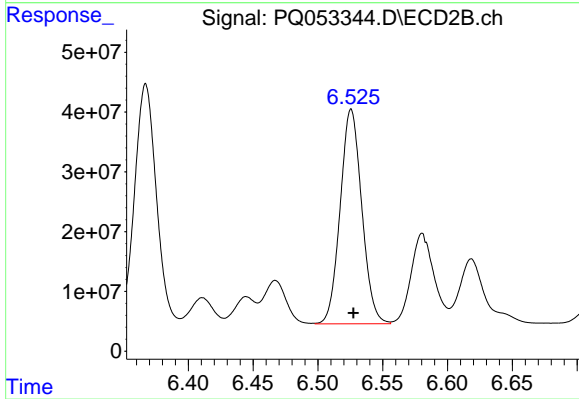
#26 AR-1254-1

R.T.: 6.367 min  
 Delta R.T.: -0.002 min  
 Response: 471823043  
 Conc: 440.04 ng/ml



#27 AR-1254-2

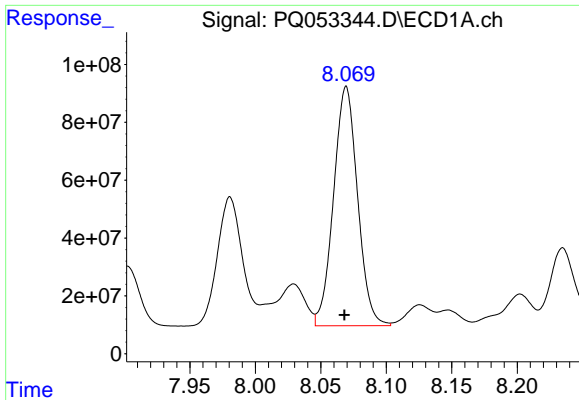
R.T.: 7.686 min  
 Delta R.T.: 0.001 min  
 Response: 1006239856  
 Conc: 411.00 ng/ml



#27 AR-1254-2

R.T.: 6.526 min  
 Delta R.T.: -0.002 min  
 Response: 415883295  
 Conc: 436.01 ng/ml

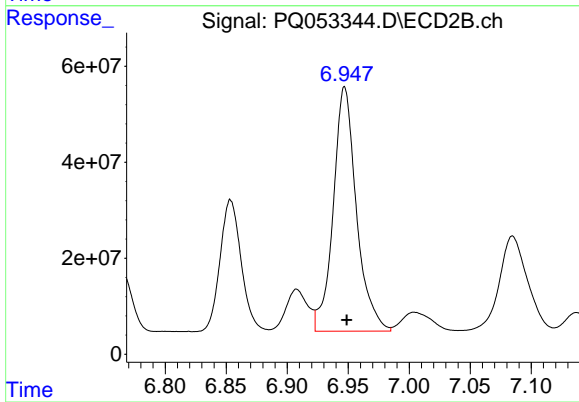




#28 AR-1254-3

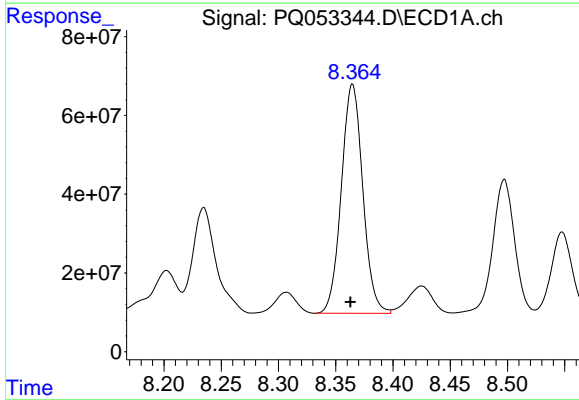
R.T.: 8.069 min  
Delta R.T.: 0.001 min  
Response: 1056286302  
Conc: 401.39 ng/ml

Instrument :  
ECD\_Q  
ClientSampleId :



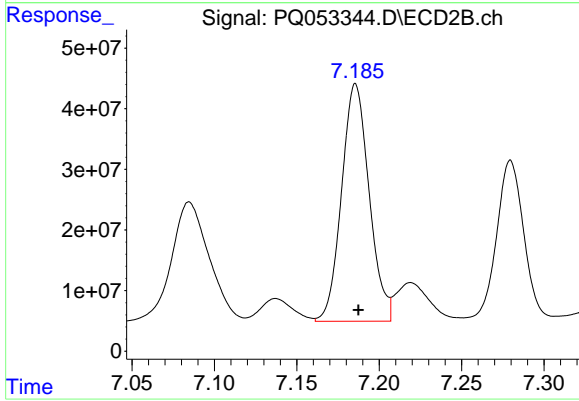
#28 AR-1254-3

R.T.: 6.947 min  
Delta R.T.: -0.002 min  
Response: 674305936  
Conc: 435.36 ng/ml



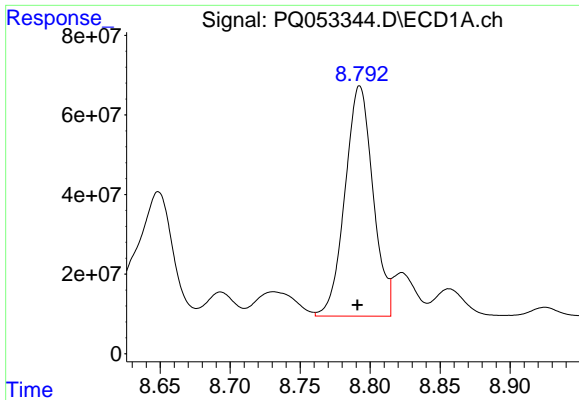
#29 AR-1254-4

R.T.: 8.365 min  
Delta R.T.: 0.002 min  
Response: 760177994  
Conc: 394.99 ng/ml



#29 AR-1254-4

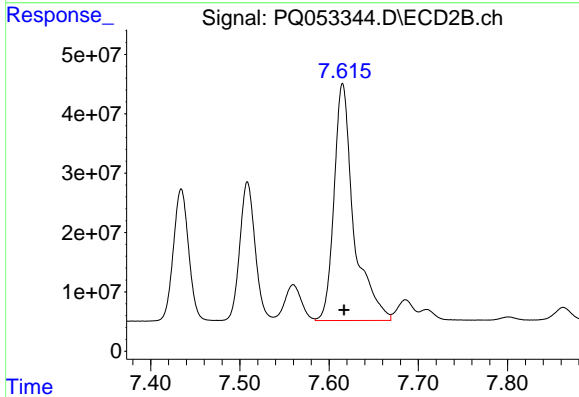
R.T.: 7.186 min  
Delta R.T.: -0.002 min  
Response: 456178974  
Conc: 435.66 ng/ml



#30 AR-1254-5

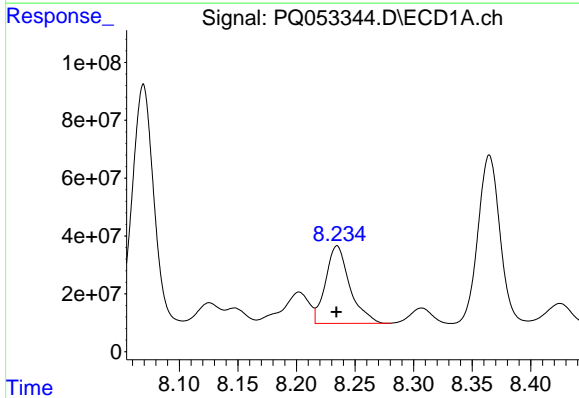
R.T.: 8.793 min  
 Delta R.T.: 0.002 min  
 Response: 805583531  
 Conc: 393.80 ng/ml

Instrument :  
 ECD\_Q  
 ClientSampled :



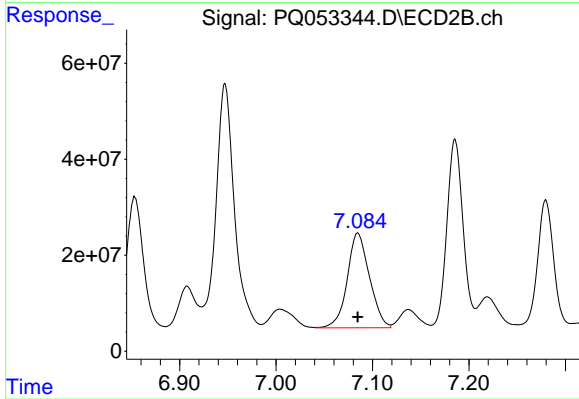
#30 AR-1254-5

R.T.: 7.615 min  
 Delta R.T.: -0.002 min  
 Response: 612368775  
 Conc: 419.66 ng/ml



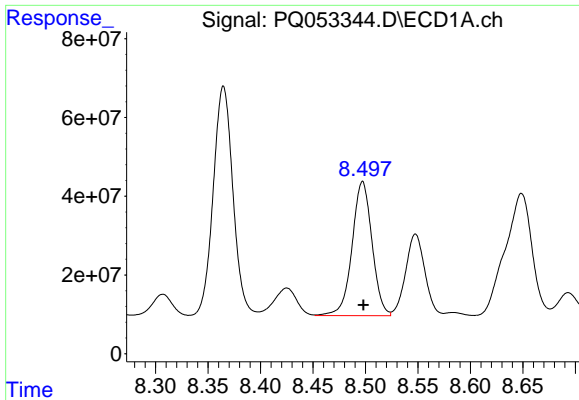
#31 AR-1260-1

R.T.: 8.235 min  
 Delta R.T.: 0.000 min  
 Response: 384385460  
 Conc: 333.87 ng/ml



#31 AR-1260-1

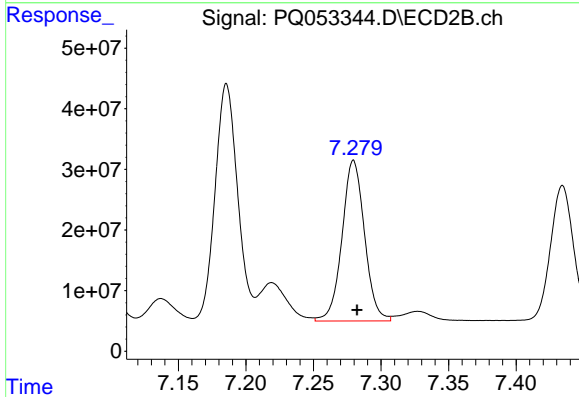
R.T.: 7.085 min  
 Delta R.T.: 0.000 min  
 Response: 315191271  
 Conc: 486.38 ng/ml



#32 AR-1260-2

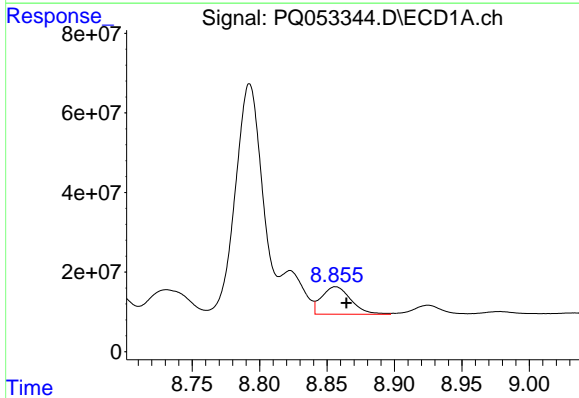
R.T.: 8.497 min  
 Delta R.T.: 0.000 min  
 Response: 452196692  
 Conc: 324.55 ng/ml

Instrument :  
 ECD\_Q  
 ClientSampleId :



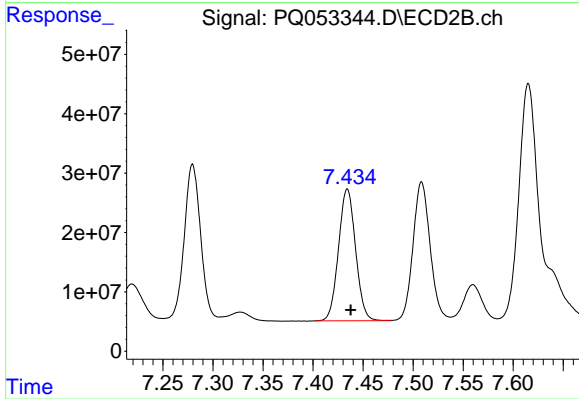
#32 AR-1260-2

R.T.: 7.280 min  
 Delta R.T.: -0.003 min  
 Response: 307463337  
 Conc: 331.69 ng/ml



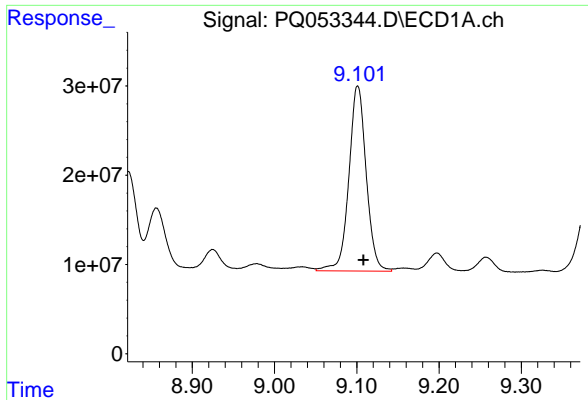
#33 AR-1260-3

R.T.: 8.856 min  
 Delta R.T.: -0.008 min  
 Response: 104337775  
 Conc: 97.45 ng/ml



#33 AR-1260-3

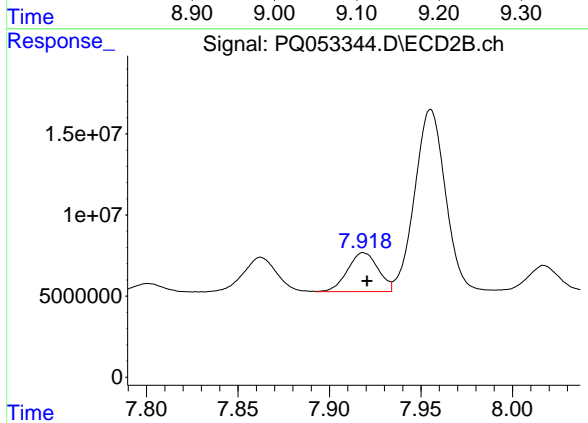
R.T.: 7.434 min  
 Delta R.T.: -0.003 min  
 Response: 263183806  
 Conc: 338.24 ng/ml



#34 AR-1260-4

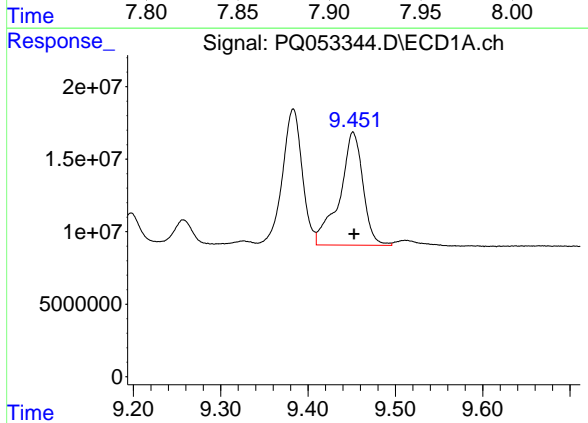
R.T.: 9.101 min  
 Delta R.T.: -0.007 min  
 Response: 303880882  
 Conc: 250.96 ng/ml

Instrument :  
 ECD\_Q  
 ClientSampled :



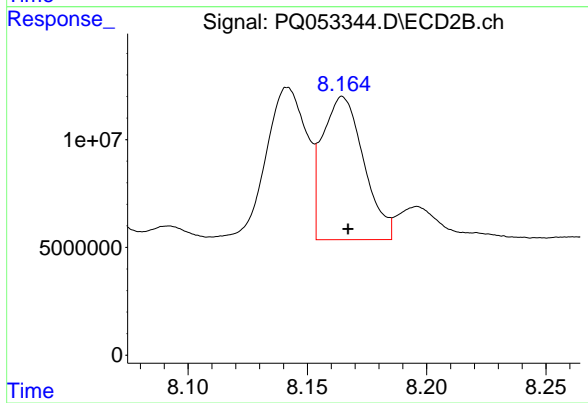
#34 AR-1260-4

R.T.: 7.919 min  
 Delta R.T.: -0.002 min  
 Response: 27902394  
 Conc: 41.10 ng/ml



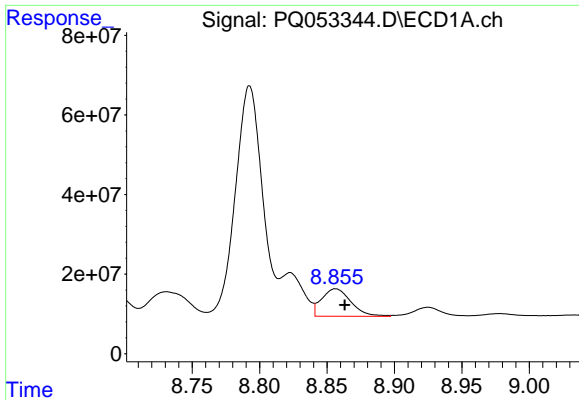
#35 AR-1260-5

R.T.: 9.451 min  
 Delta R.T.: -0.001 min  
 Response: 145038096  
 Conc: 56.68 ng/ml



#35 AR-1260-5

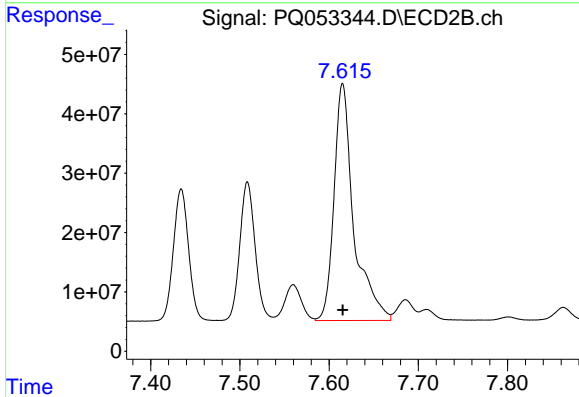
R.T.: 8.165 min  
 Delta R.T.: -0.002 min  
 Response: 80012071  
 Conc: 43.25 ng/ml



#36 AR-1262-1

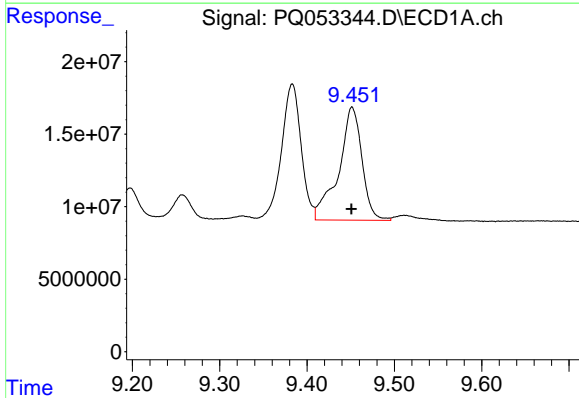
R.T.: 8.856 min  
 Delta R.T.: -0.007 min  
 Response: 104337775  
 Conc: 52.17 ng/ml

Instrument :  
 ECD\_Q  
 ClientSampleId :



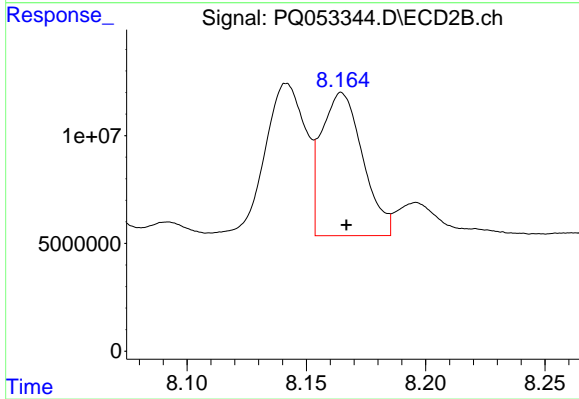
#36 AR-1262-1

R.T.: 7.615 min  
 Delta R.T.: 0.000 min  
 Response: 612368775  
 Conc: 998.98 ng/ml



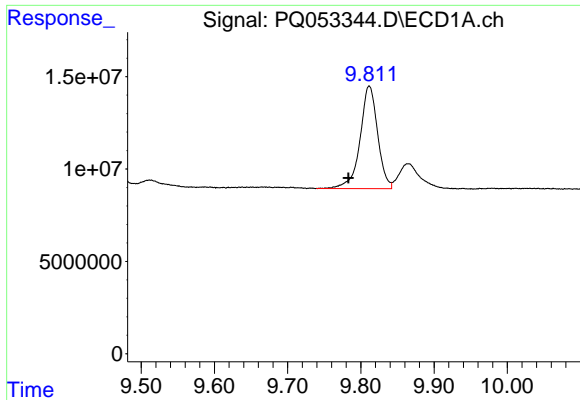
#37 AR-1262-2

R.T.: 9.451 min  
 Delta R.T.: 0.000 min  
 Response: 145038096  
 Conc: 39.08 ng/ml



#37 AR-1262-2

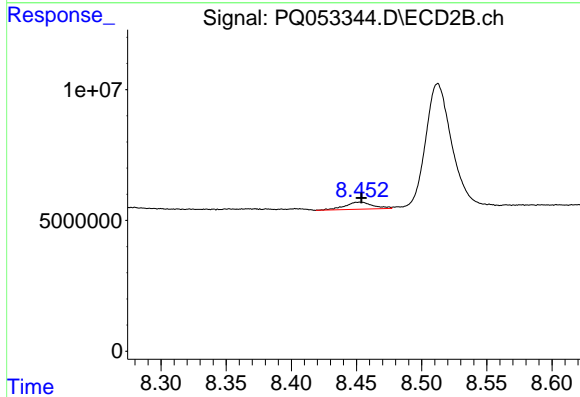
R.T.: 8.165 min  
 Delta R.T.: -0.002 min  
 Response: 80012071  
 Conc: 31.49 ng/ml



#38 AR-1262-3

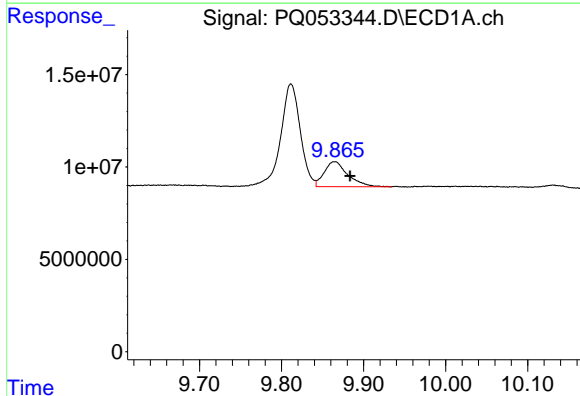
R.T.: 9.811 min  
 Delta R.T.: 0.029 min  
 Response: 92505721  
 Conc: 36.86 ng/ml

Instrument :  
 ECD\_Q  
 ClientSampleId :



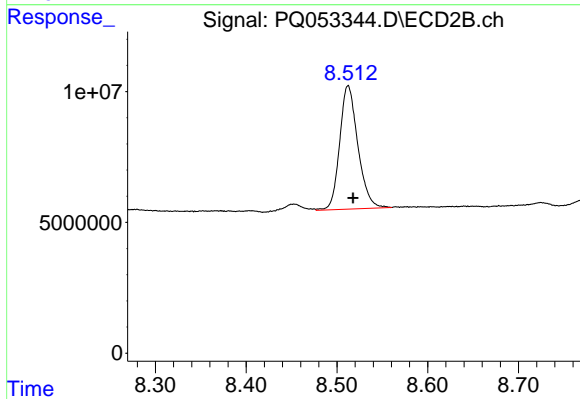
#38 AR-1262-3

R.T.: 8.453 min  
 Delta R.T.: -0.001 min  
 Response: 4016997  
 Conc: 3.95 ng/ml



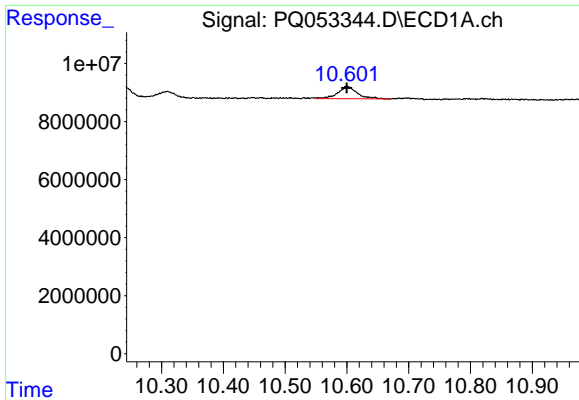
#39 AR-1262-4

R.T.: 9.865 min  
 Delta R.T.: -0.019 min  
 Response: 27019517  
 Conc: 13.52 ng/ml



#39 AR-1262-4

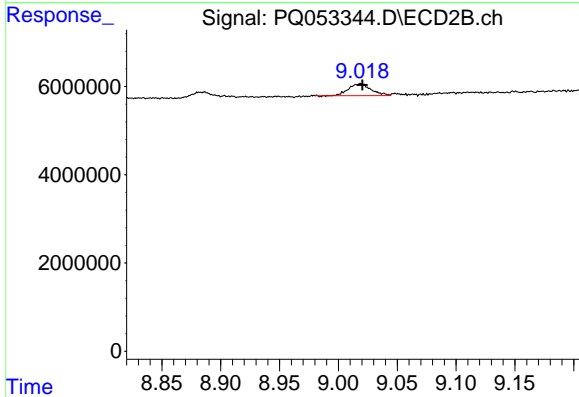
R.T.: 8.512 min  
 Delta R.T.: -0.005 min  
 Response: 65654730  
 Conc: 38.11 ng/ml



#40 AR-1262-5

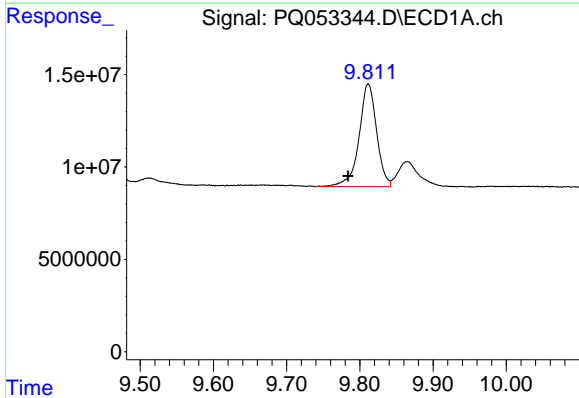
R.T.: 10.600 min  
 Delta R.T.: 0.000 min  
 Response: 9366290  
 Conc: 6.61 ng/ml

Instrument :  
 ECD\_Q  
 ClientSampleId :



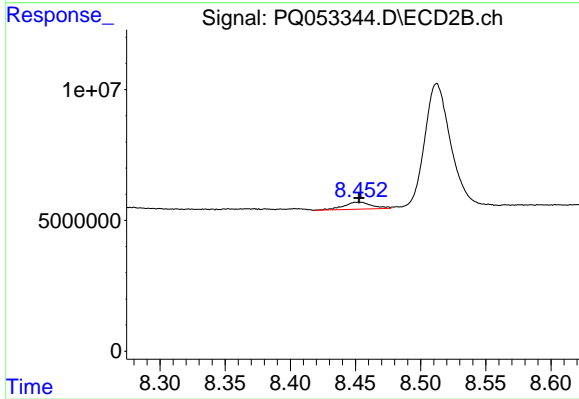
#40 AR-1262-5

R.T.: 9.019 min  
 Delta R.T.: -0.001 min  
 Response: 3585555  
 Conc: 4.61 ng/ml



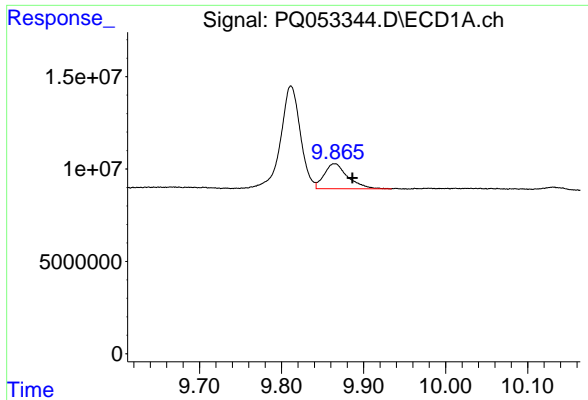
#41 AR-1268-1

R.T.: 9.811 min  
 Delta R.T.: 0.028 min  
 Response: 92505721  
 Conc: 20.79 ng/ml



#41 AR-1268-1

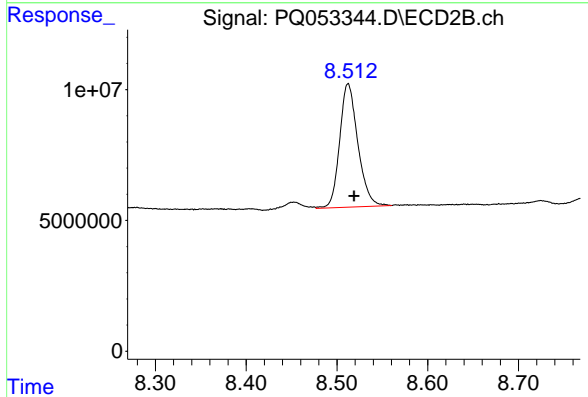
R.T.: 8.453 min  
 Delta R.T.: 0.000 min  
 Response: 4016997  
 Conc: 1.37 ng/ml



#42 AR-1268-2

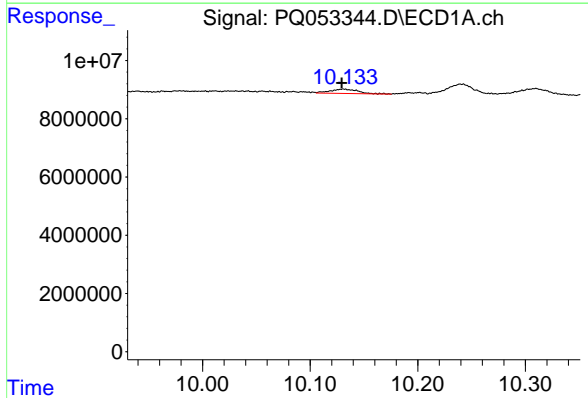
R.T.: 9.865 min  
 Delta R.T.: -0.022 min  
 Response: 27019517  
 Conc: 6.30 ng/ml

Instrument :  
 ECD\_Q  
 ClientSampleId :



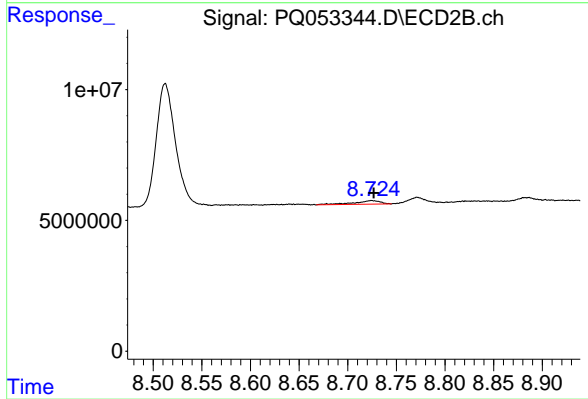
#42 AR-1268-2

R.T.: 8.512 min  
 Delta R.T.: -0.007 min  
 Response: 65654730  
 Conc: 26.37 ng/ml



#43 AR-1268-3

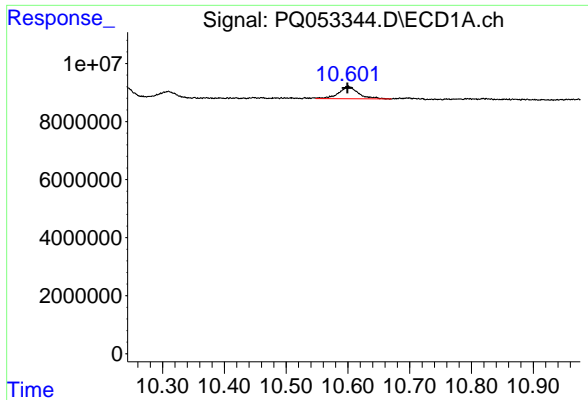
R.T.: 10.131 min  
 Delta R.T.: 0.001 min  
 Response: 2582976  
 Conc: 0.68 ng/ml



#43 AR-1268-3

R.T.: 8.725 min  
 Delta R.T.: -0.002 min  
 Response: 2524712  
 Conc: 1.16 ng/ml

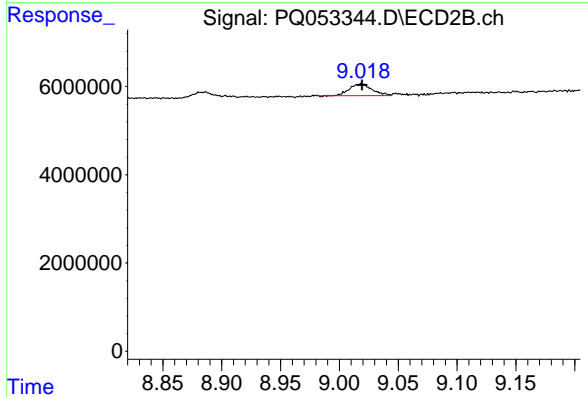




#44 AR-1268-4

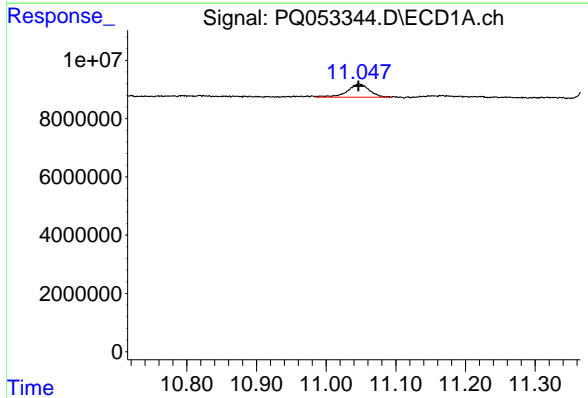
R.T.: 10.600 min  
 Delta R.T.: 0.001 min  
 Response: 9366290  
 Conc: 6.08 ng/ml

Instrument :  
 ECD\_Q  
 ClientSampleId :



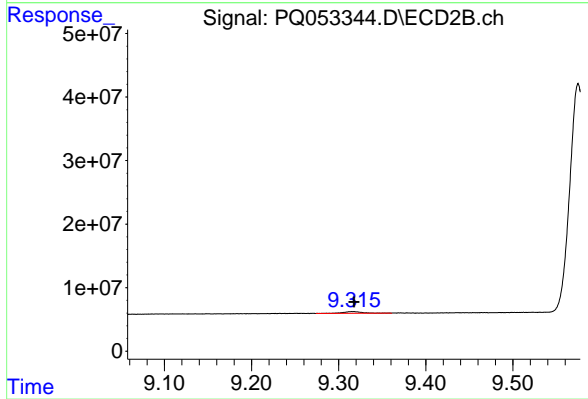
#44 AR-1268-4

R.T.: 9.019 min  
 Delta R.T.: 0.000 min  
 Response: 3585555  
 Conc: 4.20 ng/ml



#45 AR-1268-5

R.T.: 11.047 min  
 Delta R.T.: 0.000 min  
 Response: 9948330  
 Conc: 0.77 ng/ml



#45 AR-1268-5

R.T.: 9.316 min  
 Delta R.T.: -0.001 min  
 Response: 4017967  
 Conc: 0.65 ng/ml