

Data Path : Z:\pestpcbsrv\HPCHEM1\ECD\_Q\Data\PQ050219\  
 Data File : PQ039291.D  
 Signal(s) : Signal #1: ECD1A.ch Signal #2: ECD2B.ch  
 Acq On : 01 May 2019 19:58  
 Operator : AJ\SJ  
 Sample : AR1221ICC200  
 Misc :  
 ALS Vial : 9 Sample Multiplier: 1

Instrument :  
 ECD\_Q  
 ClientSampleId :  
 AR1221201

Integration File signal 1: autoint1.e  
 Integration File signal 2: autoint2.e  
 Quant Time: May 02 05:37:15 2019  
 Quant Method : Z:\pestpcbsrv\HPCHEM1\ECD\_Q\Method\PQ050219CLP.M  
 Quant Title : GC EXTRACTABLES  
 QLast Update : Thu May 02 05:36:26 2019  
 Response via : Initial Calibration  
 Integrator: ChemStation

Volume Inj. : 1 µl  
 Signal #1 Phase : ZB MR1 Signal #2 Phase: ZB MR2  
 Signal #1 Info : 30Mx0.32mmx 0.5µm Signal #2 Info : 30M x 0.32mm x 0.25µm

Compound	RT#1	RT#2	Resp#1	Resp#2	ng/ml	ng/ml
-----						
System Monitoring Compounds						
1) SA Tetrachlo...	5.701	4.796	34046755	17294286	9.987	9.562
2) SA Decachlor...	12.102	10.556	123.5E6	68217960	21.206	20.766
Target Compounds						
8) L2 AR-1221-1	5.981	5.103	8430016	4698764	207.078	192.067
9) L2 AR-1221-2	6.091	5.220	5870458	3750305	189.321	217.020
10) L2 AR-1221-3	6.187	5.323	20825379	12142770	202.231	203.684
-----						

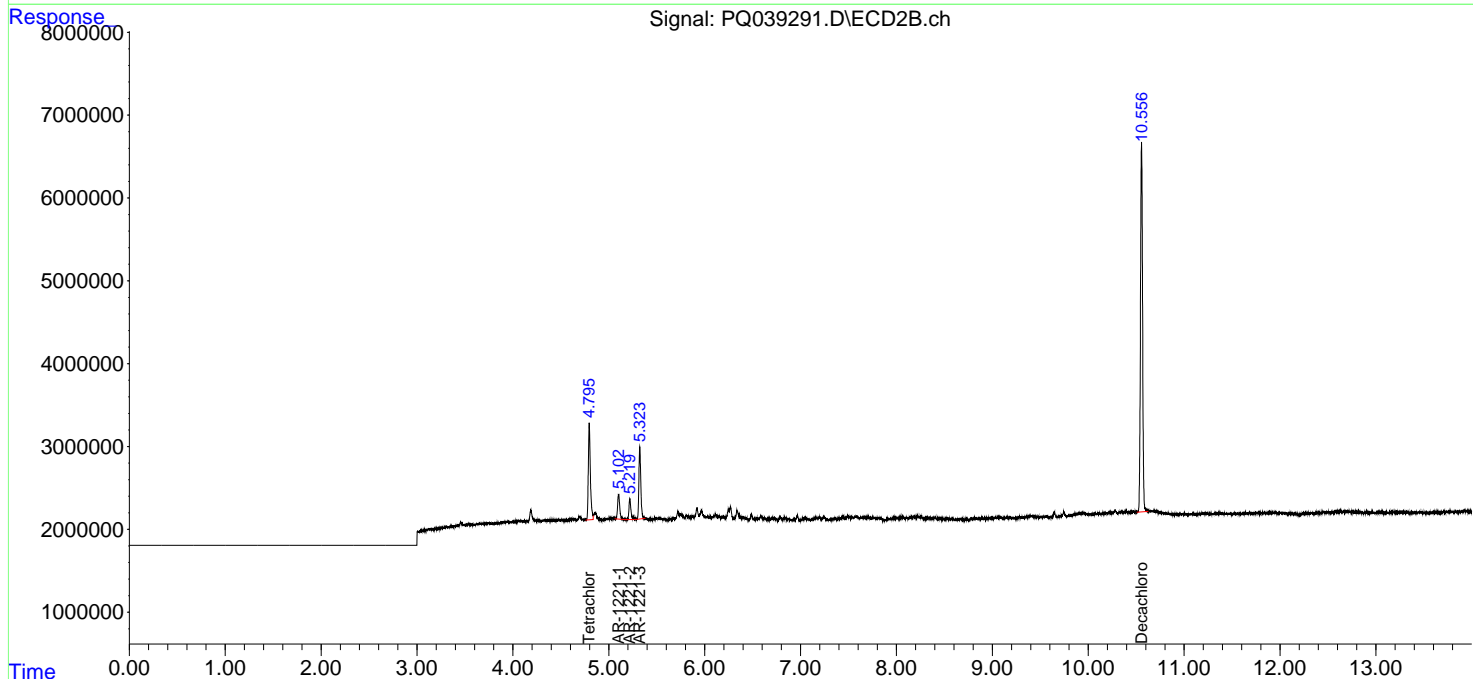
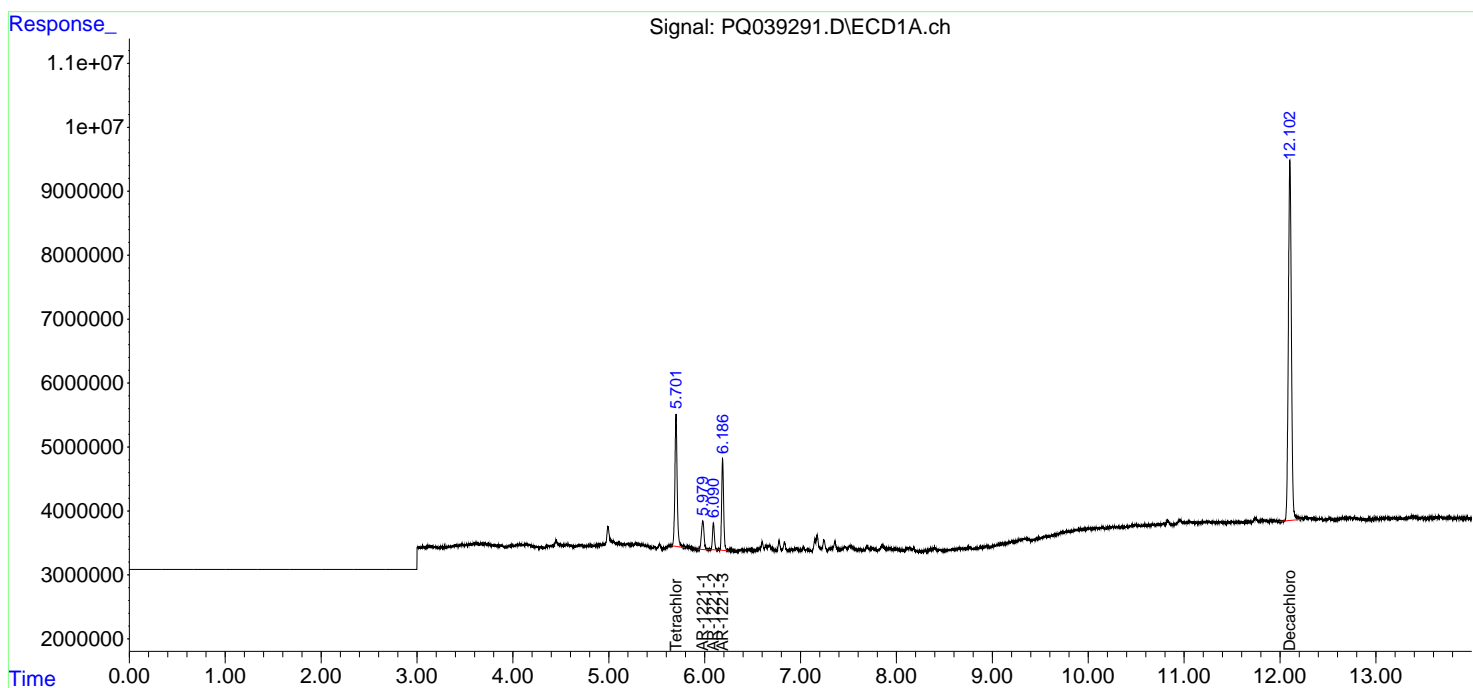
(f)=RT Delta > 1/2 Window (#)=Amounts differ by > 25% (m)=manual int.

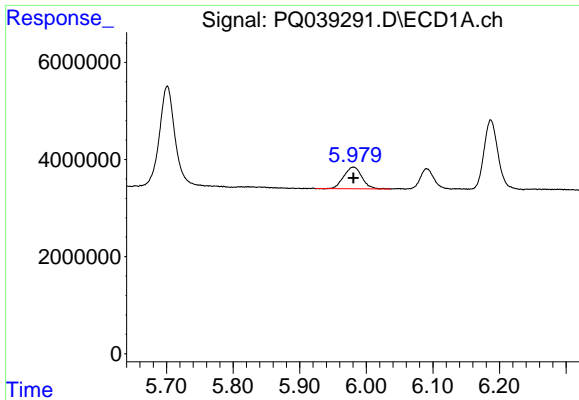
Data Path : Z:\pestpcbsrv\HPCHEM1\ECD\_Q\Data\PQ050219\  
 Data File : PQ039291.D  
 Signal(s) : Signal #1: ECD1A.ch Signal #2: ECD2B.ch  
 Acq On : 01 May 2019 19:58  
 Operator : AJ\SJ  
 Sample : AR1221ICC200  
 Misc :  
 ALS Vial : 9 Sample Multiplier: 1

Instrument :  
 ECD\_Q  
 ClientSampled :  
 AR1221201

Integration File signal 1: autoint1.e  
 Integration File signal 2: autoint2.e  
 Quant Time: May 02 05:37:15 2019  
 Quant Method : Z:\pestpcbsrv\HPCHEM1\ECD\_Q\Method\PQ050219CLP.M  
 Quant Title : GC EXTRACTABLES  
 QLast Update : Thu May 02 05:36:26 2019  
 Response via : Initial Calibration  
 Integrator: ChemStation

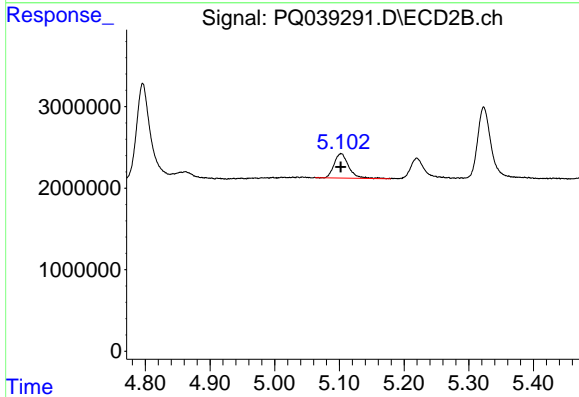
Volume Inj. : 1 µl  
 Signal #1 Phase : ZB MR1 Signal #2 Phase: ZB MR2  
 Signal #1 Info : 30Mx0.32mmx 0.5µm Signal #2 Info : 30M x 0.32mm x 0.25µm



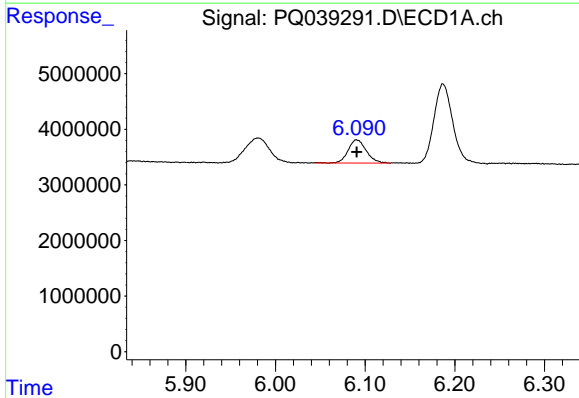


#8 AR-1221-1  
R.T.: 5.981 min  
Delta R.T.: 0.000 min  
Response: 8430016  
Conc: 207.08 ng/ml

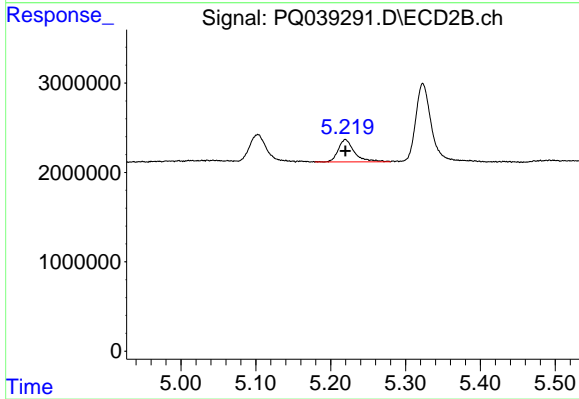
Instrument :  
ECD\_Q  
ClientSampleId :  
AR1221201



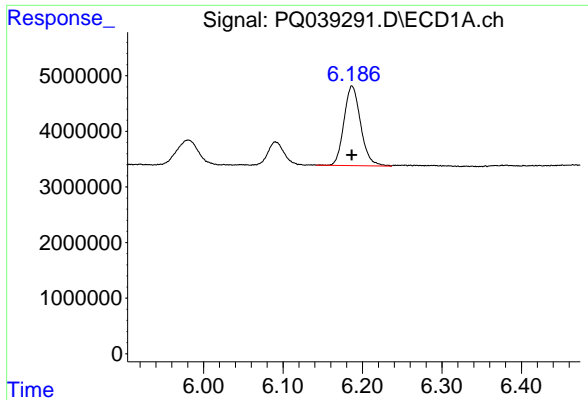
#8 AR-1221-1  
R.T.: 5.103 min  
Delta R.T.: 0.000 min  
Response: 4698764  
Conc: 192.07 ng/ml



#9 AR-1221-2  
R.T.: 6.091 min  
Delta R.T.: 0.000 min  
Response: 5870458  
Conc: 189.32 ng/ml



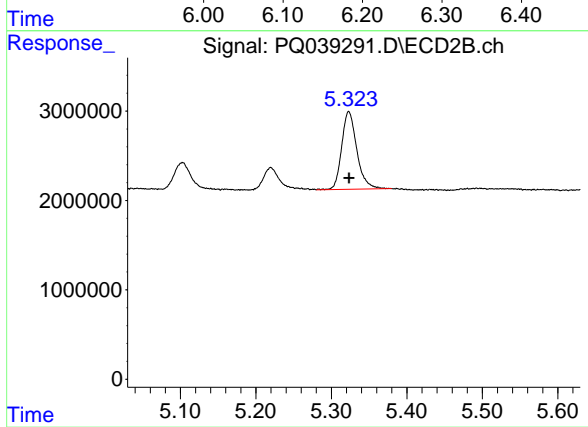
#9 AR-1221-2  
R.T.: 5.220 min  
Delta R.T.: 0.000 min  
Response: 3750305  
Conc: 217.02 ng/ml



#10 AR-1221-3

R.T.: 6.187 min  
Delta R.T.: 0.000 min  
Response: 20825379  
Conc: 202.23 ng/ml

Instrument :  
ECD\_Q  
ClientSampled :  
AR1221201



#10 AR-1221-3

R.T.: 5.323 min  
Delta R.T.: 0.000 min  
Response: 12142770  
Conc: 203.68 ng/ml