

Data Path : Z:\pestpcbsrv\HPCHEM1\ECD\_Q\Data\PQ050219\  
 Data File : PQ039298.D  
 Signal(s) : Signal #1: ECD1A.ch Signal #2: ECD2B.ch  
 Acq On : 01 May 2019 22:00  
 Operator : AJ\SJ  
 Sample : AR1232ICC800  
 Misc :  
 ALS Vial : 16 Sample Multiplier: 1

Instrument :  
 ECD\_Q  
 ClientSampleId :  
 AR1232401

Integration File signal 1: autoint1.e  
 Integration File signal 2: autoint2.e  
 Quant Time: May 02 05:55:01 2019  
 Quant Method : Z:\pestpcbsrv\HPCHEM1\ECD\_Q\Method\PQ050219CLP.M  
 Quant Title : GC EXTRACTABLES  
 QLast Update : Thu May 02 05:53:38 2019  
 Response via : Initial Calibration  
 Integrator: ChemStation

Volume Inj. : 1 µl  
 Signal #1 Phase : ZB MR1 Signal #2 Phase: ZB MR2  
 Signal #1 Info : 30Mx0.32mmx 0.5µm Signal #2 Info : 30M x 0.32mm x 0.25µm

Compound	RT#1	RT#2	Resp#1	Resp#2	ng/ml	ng/ml
-----						
System Monitoring Compounds						
1) SA Tetrachlo...	5.702	4.797	111.5E6	59231395	35.607	34.839
2) SA Decachlor...	12.099	10.554	448.8E6	253.5E6	77.459	76.795
Target Compounds						
11) L3 AR-1232-1	6.187	5.323	46150716	26131546	654.627	684.245
12) L3 AR-1232-2	6.832	6.269	25175671	32570015	681.927	733.528
13) L3 AR-1232-3	7.174	6.483	52987645	16853233	708.607	708.322
14) L3 AR-1232-4	7.359	6.587	27023530	15633411	660.667	706.613
15) L3 AR-1232-5	7.463	6.790	20977541	18308659	715.554	735.535
-----						

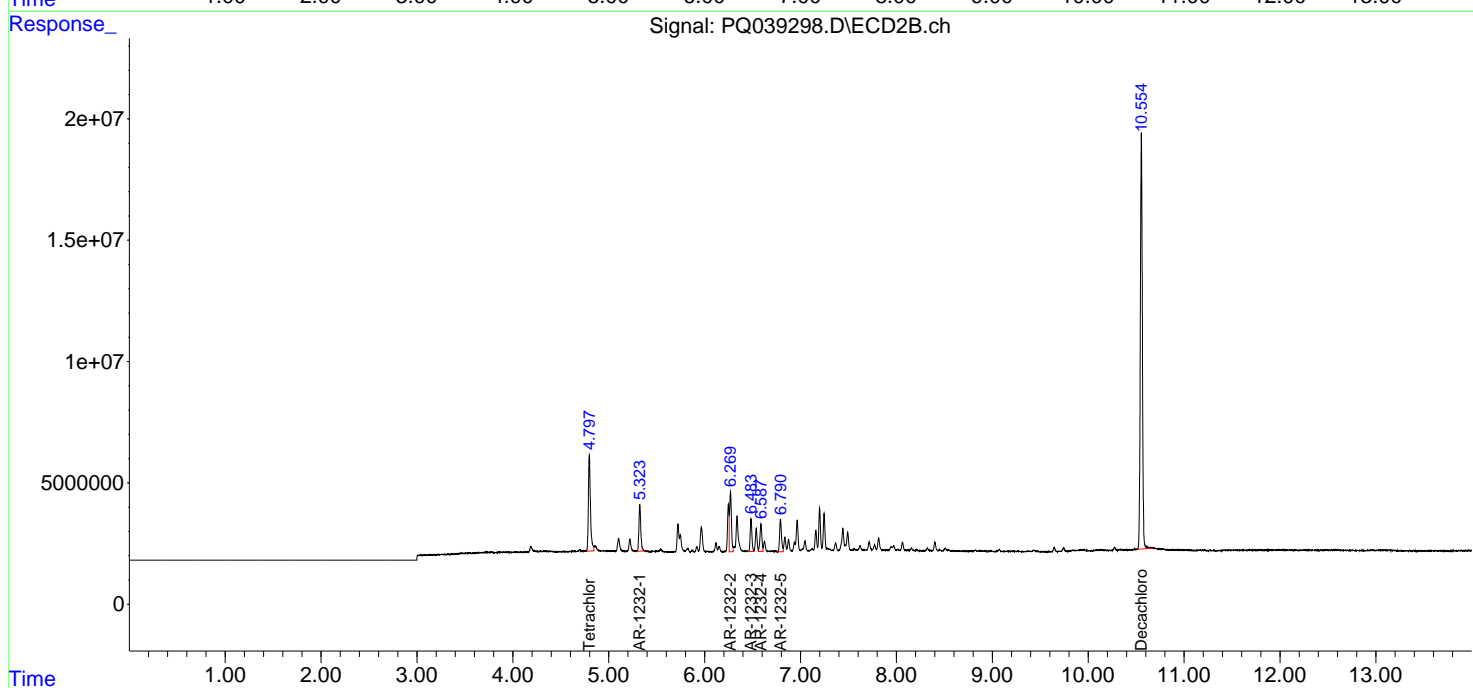
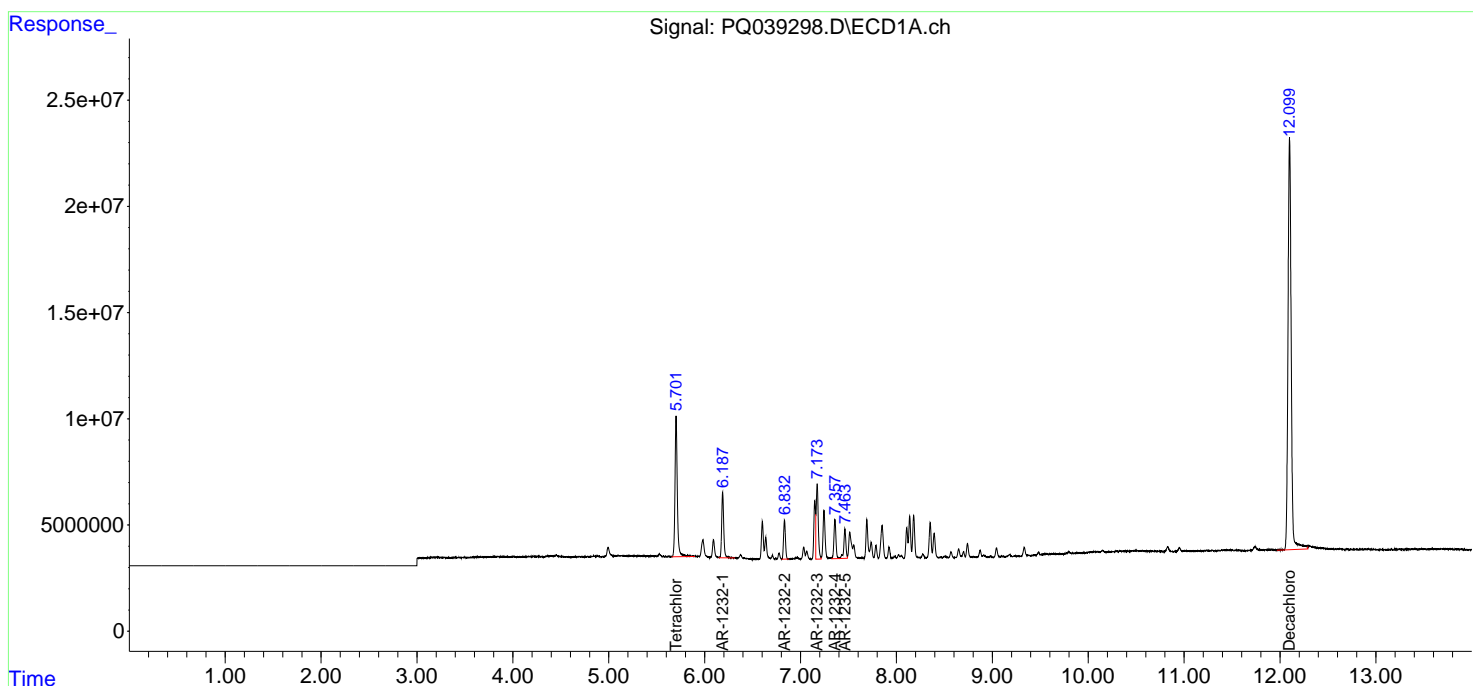
(f)=RT Delta > 1/2 Window (#)=Amounts differ by > 25% (m)=manual int.

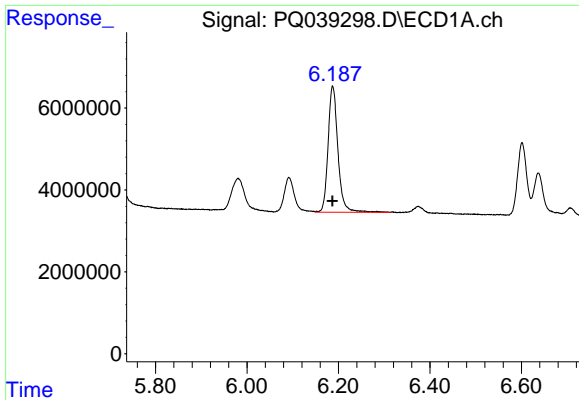
Data Path : Z:\pestpcbsrv\HPCHEM1\ECD\_Q\Data\PQ050219\  
 Data File : PQ039298.D  
 Signal(s) : Signal #1: ECD1A.ch Signal #2: ECD2B.ch  
 Acq On : 01 May 2019 22:00  
 Operator : AJ\SJ  
 Sample : AR1232ICC800  
 Misc :  
 ALS Vial : 16 Sample Multiplier: 1

Instrument :  
 ECD\_Q  
 ClientSampleID :  
 AR1232401

Integration File signal 1: autoint1.e  
 Integration File signal 2: autoint2.e  
 Quant Time: May 02 05:55:01 2019  
 Quant Method : Z:\pestpcbsrv\HPCHEM1\ECD\_Q\Method\PQ050219CLP.M  
 Quant Title : GC EXTRACTABLES  
 QLast Update : Thu May 02 05:53:38 2019  
 Response via : Initial Calibration  
 Integrator: ChemStation

Volume Inj. : 1 µl  
 Signal #1 Phase : ZB MR1 Signal #2 Phase: ZB MR2  
 Signal #1 Info : 30Mx0.32mmx 0.5µm Signal #2 Info : 30M x 0.32mm x 0.25µm

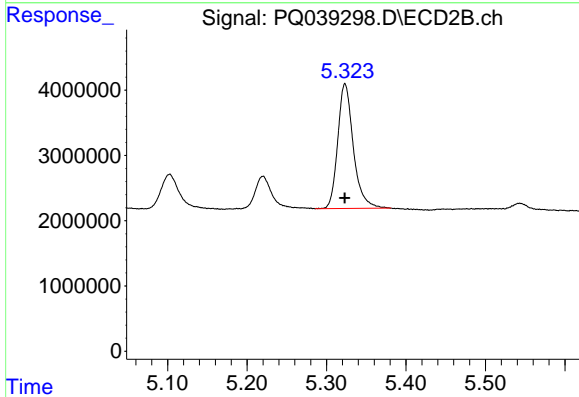




#11 AR-1232-1

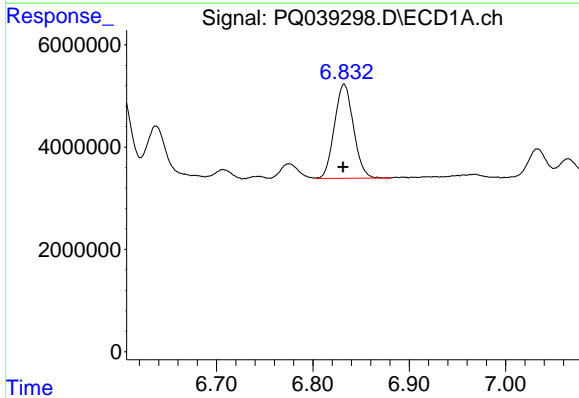
R.T.: 6.187 min  
 Delta R.T.: 0.000 min  
 Response: 46150716  
 Conc: 654.63 ng/ml

Instrument :  
 ECD\_Q  
 ClientSampleId :  
 AR1232401



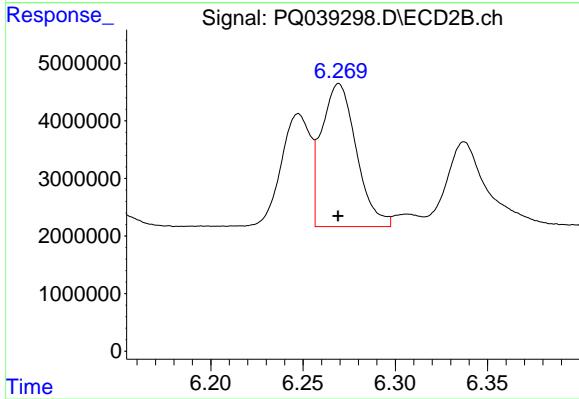
#11 AR-1232-1

R.T.: 5.323 min  
 Delta R.T.: 0.000 min  
 Response: 26131546  
 Conc: 684.25 ng/ml



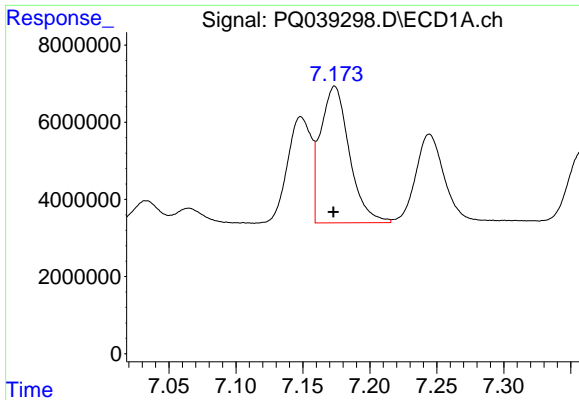
#12 AR-1232-2

R.T.: 6.832 min  
 Delta R.T.: 0.000 min  
 Response: 25175671  
 Conc: 681.93 ng/ml



#12 AR-1232-2

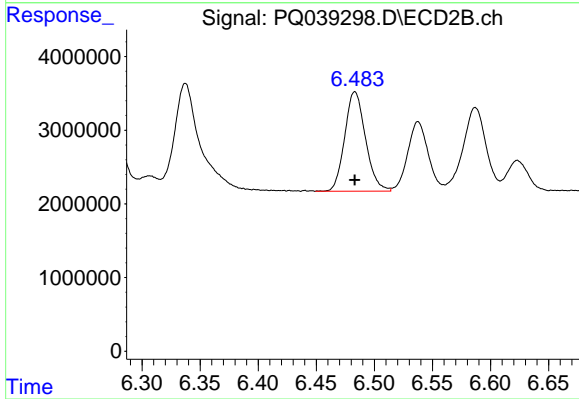
R.T.: 6.269 min  
 Delta R.T.: 0.000 min  
 Response: 32570015  
 Conc: 733.53 ng/ml



#13 AR-1232-3

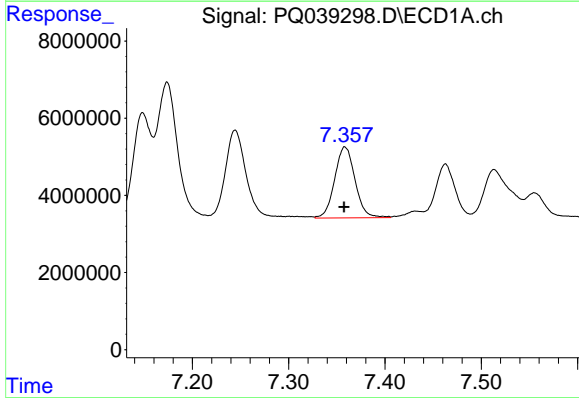
R.T.: 7.174 min  
 Delta R.T.: 0.000 min  
 Response: 52987645  
 Conc: 708.61 ng/ml

Instrument :  
 ECD\_Q  
 ClientSampleId :  
 AR1232401



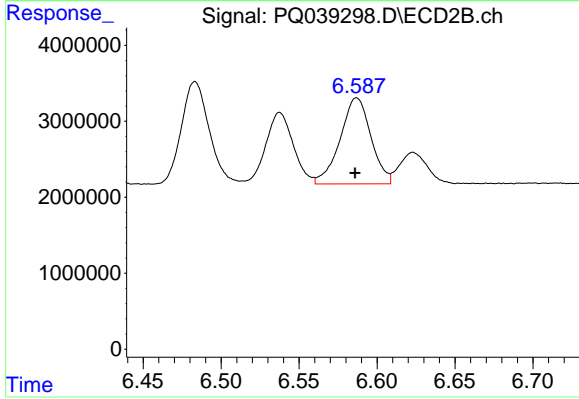
#13 AR-1232-3

R.T.: 6.483 min  
 Delta R.T.: 0.000 min  
 Response: 16853233  
 Conc: 708.32 ng/ml



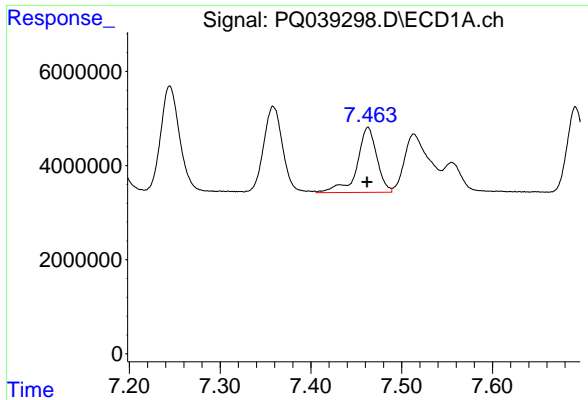
#14 AR-1232-4

R.T.: 7.359 min  
 Delta R.T.: 0.000 min  
 Response: 27023530  
 Conc: 660.67 ng/ml



#14 AR-1232-4

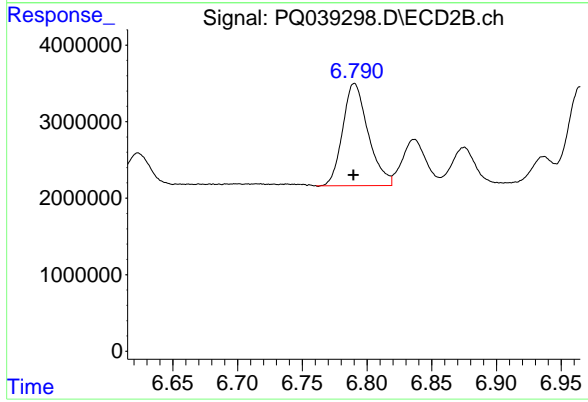
R.T.: 6.587 min  
 Delta R.T.: 0.001 min  
 Response: 15633411  
 Conc: 706.61 ng/ml



#15 AR-1232-5

R.T.: 7.463 min  
Delta R.T.: 0.000 min  
Response: 20977541  
Conc: 715.55 ng/ml

Instrument :  
ECD\_Q  
ClientSampled :  
AR1232401



#15 AR-1232-5

R.T.: 6.790 min  
Delta R.T.: 0.000 min  
Response: 18308659  
Conc: 735.54 ng/ml