

Data Path : Z:\pestpcbsrv\HPCHEM1\ECD_Q\Data\PQ050624\
 Data File : PQ066362.D
 Signal(s) : Signal #1: ECD1A.ch Signal #2: ECD2B.ch
 Acq On : 06 May 2024 10:19
 Operator : YP\AJ
 Sample : AR1660CCC500
 Misc :
 ALS Vial : 3 Sample Multiplier: 1

Instrument :
 ECD_Q
 ClientSampleId :
 AR1660CCC500

Integration File signal 1: autoint1.e
 Integration File signal 2: autoint2.e
 Quant Time: May 06 12:59:42 2024
 Quant Method : Z:\pestpcbsrv\HPCHEM1\ECD_Q\Method\PQ042324.M
 Quant Title : GC EXTRACTABLES
 QLast Update : Wed Apr 24 04:24:21 2024
 Response via : Initial Calibration
 Integrator: ChemStation

Volume Inj. : 2 µl
 Signal #1 Phase : ZB-MR1 Signal #2 Phase: ZB-MR2
 Signal #1 Info : 30Mx0.32mmx 0.50µ Signal #2 Info : 30M x 0.32mm x 0.25µm

Compound	RT#1	RT#2	Resp#1	Resp#2	ng/ml	ng/ml
System Monitoring Compounds						
1) SA Tetrachlo...	3.439	2.732	225.9E6	330.1E6	51.955	51.602
2) SA Decachlor...	8.649	7.496	129.3E6	338.5E6	52.529	53.807
Target Compounds						
3) L1 AR-1016-1	4.550	3.730	68434983	116.4E6	516.208	499.040
4) L1 AR-1016-2	4.570	3.745	103.4E6	171.0E6	516.224	505.063
5) L1 AR-1016-3	4.628	3.905	64916903	94084447	517.547	502.071
6) L1 AR-1016-4	4.720	3.954	51229537	79897532	512.560	506.621
7) L1 AR-1016-5	5.008	4.149	52334235	97600313	518.915	503.145
8) L2 AR-1221-1	3.638	2.932	4887487	13405945	130.779	159.159
9) L2 AR-1221-2	3.721	3.009	11484348	18362222	297.182	303.576
10) L2 AR-1221-3	3.792	3.077	41760962	63437713	341.125	338.741
11) L3 AR-1232-1	3.792	3.077	41760962	63437713	413.511	412.191
12) L3 AR-1232-2	4.290	3.745	55597550	171.0E6	1008.521	1061.018
13) L3 AR-1232-3	4.570	3.905	103.4E6	94084447	1072.294	1066.921
14) L3 AR-1232-4	4.720	3.991	51229537	85965258	1082.195	1141.031
15) L3 AR-1232-5	4.817	4.149	40560700	97600313	1218.201	1157.484
16) L4 AR-1242-1	4.550	3.730	68434983	116.4E6	617.801	586.758
17) L4 AR-1242-2	4.570	3.745	103.4E6	171.0E6	611.838	604.515
18) L4 AR-1242-3	4.628	3.905	64916903	94084447	613.342	599.647
19) L4 AR-1242-4	4.720	3.991	51229537	85965258	614.409	586.016
20) L4 AR-1242-5	5.441	4.484	16661394	97711843	188.588	508.223 #
21) L5 AR-1248-1	4.550	3.730	68434983	116.4E6	846.744	782.027
22) L5 AR-1248-2	4.817	3.954	40560700	79897532	351.761	361.039
23) L5 AR-1248-3	5.008	3.991	52334235	85965258	380.983	406.492
24) L5 AR-1248-4	5.404	4.149	18707708	97600313	129.813	378.949 #
25) L5 AR-1248-5	5.441	4.522	16661394	27204858	113.979	105.412
26) L6 AR-1254-1	5.376	4.484	49435331	97711843	329.055	248.432
27) L6 AR-1254-2	5.595	4.631	48043844	73631849	203.756	216.027
28) L6 AR-1254-3	5.949	5.012	24893285	28690490	101.296	53.123 #
29) L6 AR-1254-4	6.233	5.239	17027374	11524826	97.767	31.018 #
30) L6 AR-1254-5	6.647	5.642	125.4E6	263.0E6	682.576	539.871
31) L7 AR-1260-1	6.115	5.141	110.1E6	195.3E6	608.324	498.521
32) L7 AR-1260-2	6.375	5.330	115.7E6	235.8E6	546.040	494.776
33) L7 AR-1260-3	6.730	5.471	83185805	218.6E6	540.886	496.417
34) L7 AR-1260-4	6.947	5.933	92635601	184.7E6	532.669	485.061
35) L7 AR-1260-5	7.259	6.180	167.3E6	420.8E6	510.876	513.750
36) L8 AR-1262-1	6.647	5.642	125.4E6	263.0E6	853.549	941.983
37) L8 AR-1262-2	7.259	5.933	167.3E6	184.7E6	456.380	388.420
38) L8 AR-1262-3	7.538	6.457	104.0E6	99209174	432.018	262.676 #
39) L8 AR-1262-4	7.609	6.517	27795978	306.6E6	149.718	439.293 #
40) L8 AR-1262-5	8.116	7.013	42522681	110.3E6	343.773	335.135
41) L9 AR-1268-1	7.538	6.457	104.0E6	99209174	248.146	88.539 #

Data Path : Z:\pestpcbsrv\HPCHEM1\ECD_Q\Data\PQ050624\
 Data File : PQ066362.D
 Signal(s) : Signal #1: ECD1A.ch Signal #2: ECD2B.ch
 Acq On : 06 May 2024 10:19
 Operator : YP\AJ
 Sample : AR1660CCC500
 Misc :
 ALS Vial : 3 Sample Multiplier: 1

Instrument :
 ECD_Q
ClientSampleId :
 AR1660CCC500

Integration File signal 1: autoint1.e
 Integration File signal 2: autoint2.e
 Quant Time: May 06 12:59:42 2024
 Quant Method : Z:\pestpcbsrv\HPCHEM1\ECD_Q\Method\PQ042324.M
 Quant Title : GC EXTRACTABLES
 QLast Update : Wed Apr 24 04:24:21 2024
 Response via : Initial Calibration
 Integrator: ChemStation

Volume Inj. : 2 µl
 Signal #1 Phase : ZB-MR1 Signal #2 Phase: ZB-MR2
 Signal #1 Info : 30Mx0.32mmx 0.50µ Signal #2 Info : 30M x 0.32mm x 0.25µm

	Compound	RT#1	RT#2	Resp#1	Resp#2	ng/ml	ng/ml
42)	L9 AR-1268-2	7.609	6.517	27795978	306.6E6	71.462	300.528 #
43)	L9 AR-1268-3	7.792	6.719	1981520	6213806	6.165	6.986
44)	L9 AR-1268-4	8.116	7.013	42522681	110.3E6	300.092	296.552
45)	L9 AR-1268-5	8.411	7.281	12591579	28573387	13.285	10.897

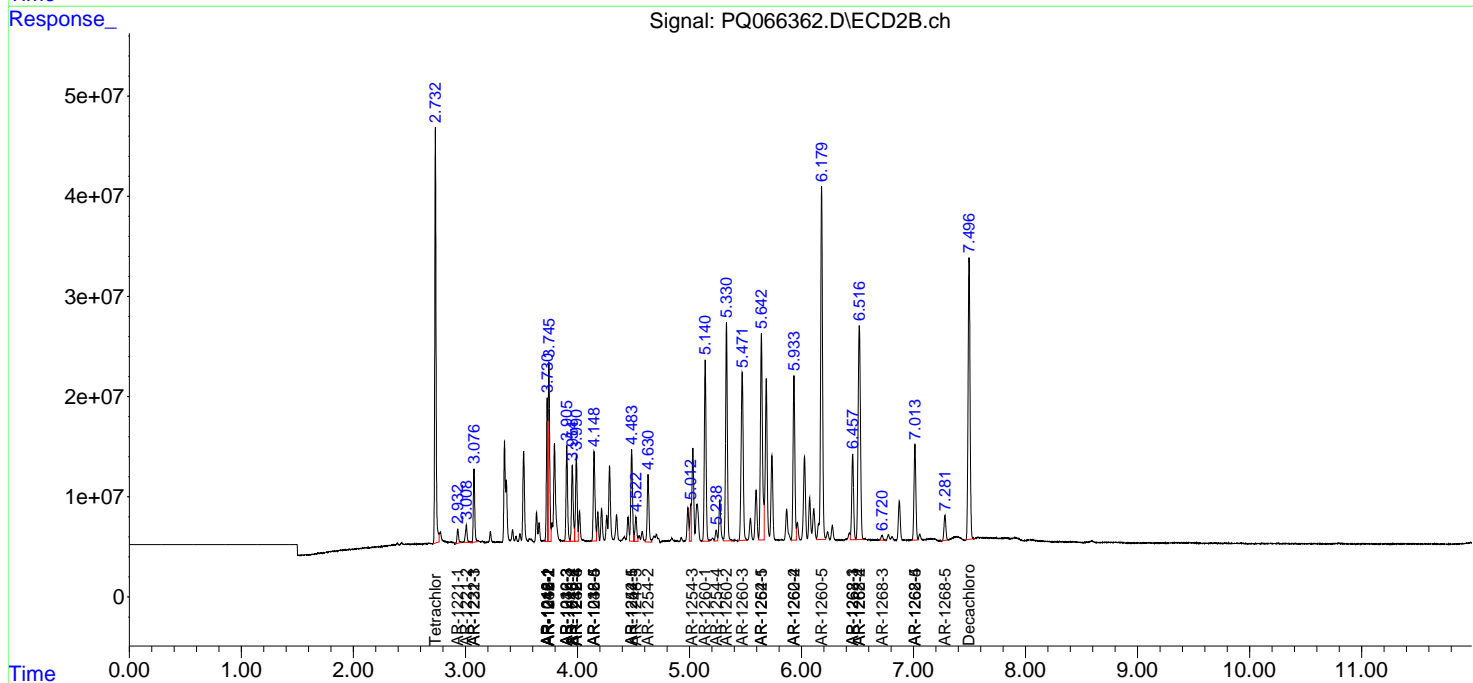
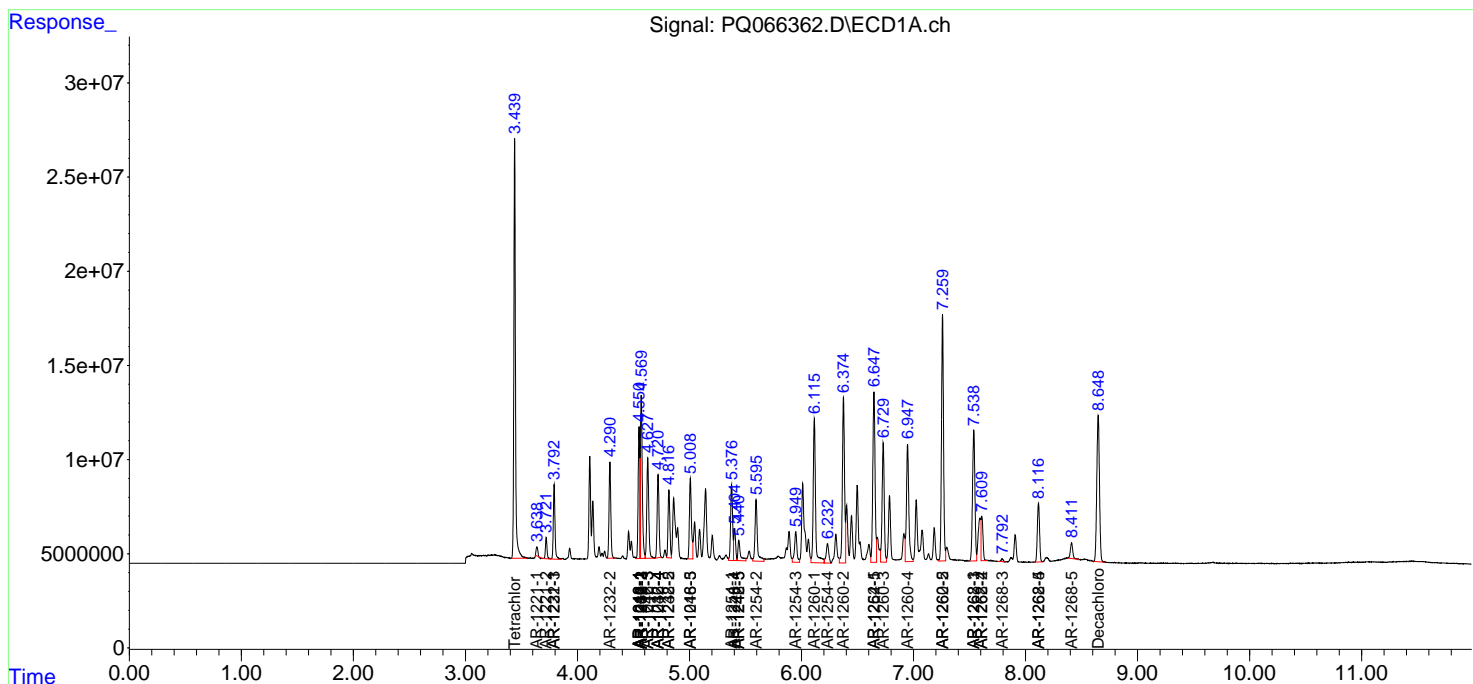
(f)=RT Delta > 1/2 Window (#)=Amounts differ by > 25% (m)=manual int.

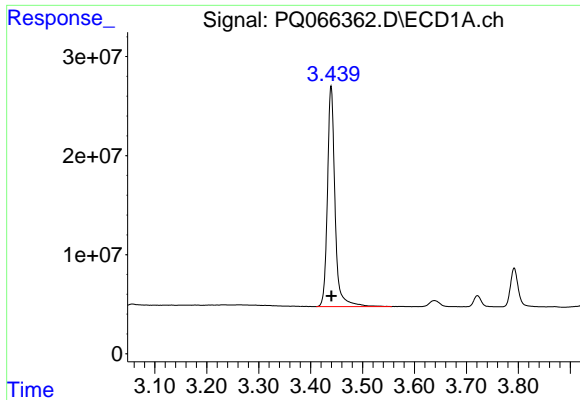
Data Path : Z:\pestpcbsrv\HPCHEM1\ECD_Q\Data\PQ050624\
 Data File : PQ066362.D
 Signal(s) : Signal #1: ECD1A.ch Signal #2: ECD2B.ch
 Acq On : 06 May 2024 10:19
 Operator : YP\AJ
 Sample : AR1660CCC500
 Misc :
 ALS Vial : 3 Sample Multiplier: 1

Instrument :
 ECD_Q
 ClientSampleId :
 AR1660CCC500

Integration File signal 1: autoint1.e
 Integration File signal 2: autoint2.e
 Quant Time: May 06 12:59:42 2024
 Quant Method : Z:\pestpcbsrv\HPCHEM1\ECD_Q\Method\PQ042324.M
 Quant Title : GC EXTRACTABLES
 QLast Update : Wed Apr 24 04:24:21 2024
 Response via : Initial Calibration
 Integrator: ChemStation

Volume Inj. : 2 µl
 Signal #1 Phase : ZB-MR1 Signal #2 Phase: ZB-MR2
 Signal #1 Info : 30Mx0.32mmx 0.50µ Signal #2 Info : 30M x 0.32mm x 0.25µm

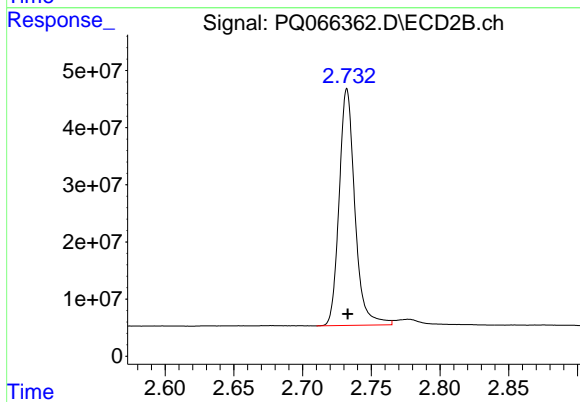




#1 Tetrachloro-m-xylene

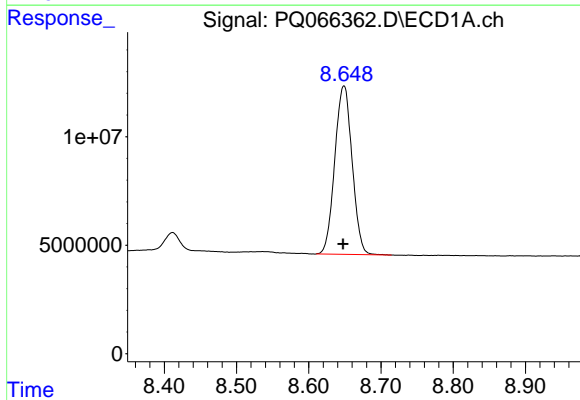
R.T.: 3.439 min
 Delta R.T.: 0.000 min
 Response: 225860489
 Conc: 51.95 ng/ml

Instrument :
 ECD_Q
 ClientSampleId :
 AR1660CCC500



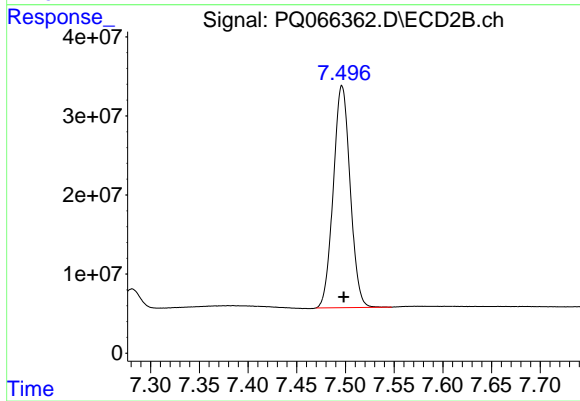
#1 Tetrachloro-m-xylene

R.T.: 2.732 min
 Delta R.T.: 0.000 min
 Response: 330118869
 Conc: 51.60 ng/ml



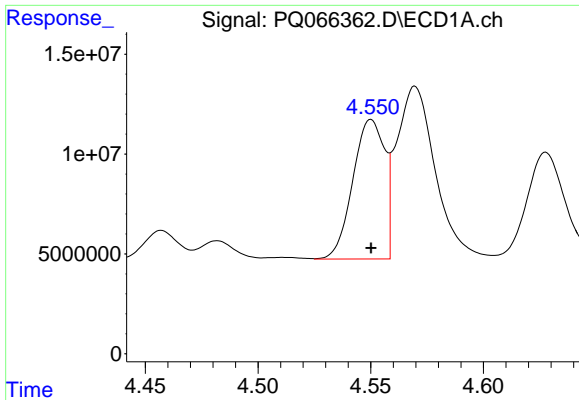
#2 Decachlorobiphenyl

R.T.: 8.649 min
 Delta R.T.: 0.001 min
 Response: 129289378
 Conc: 52.53 ng/ml



#2 Decachlorobiphenyl

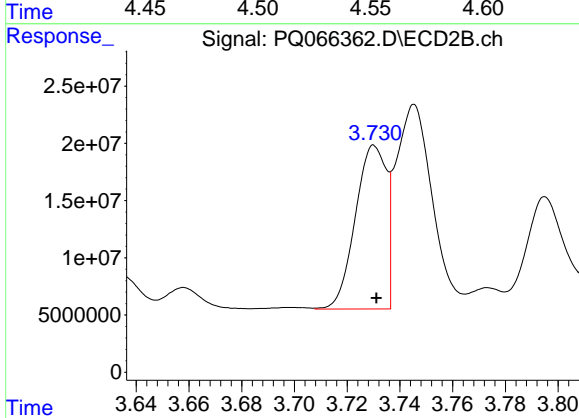
R.T.: 7.496 min
 Delta R.T.: -0.002 min
 Response: 338525726
 Conc: 53.81 ng/ml



#3 AR-1016-1

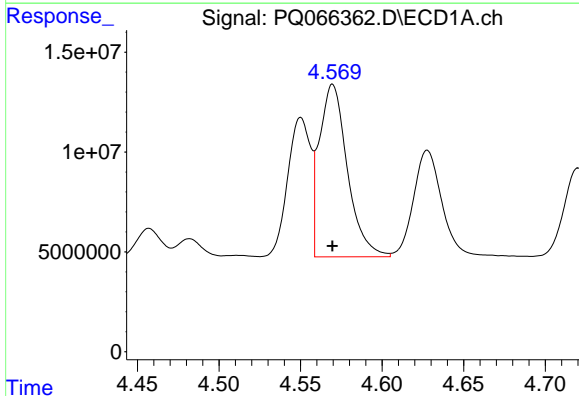
R.T.: 4.550 min
 Delta R.T.: 0.000 min
 Response: 68434983
 Conc: 516.21 ng/ml

Instrument :
 ECD_Q
 ClientSampleId :
 AR1660CCC500



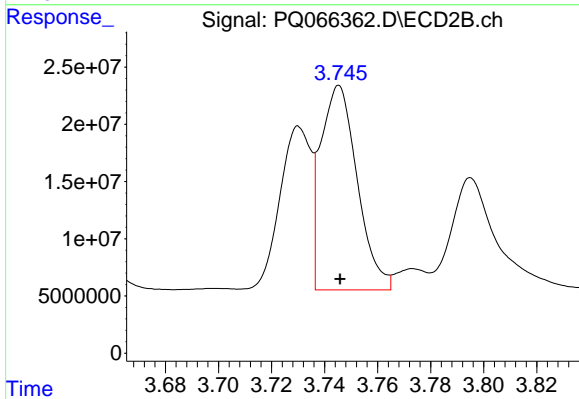
#3 AR-1016-1

R.T.: 3.730 min
 Delta R.T.: 0.000 min
 Response: 116380900
 Conc: 499.04 ng/ml



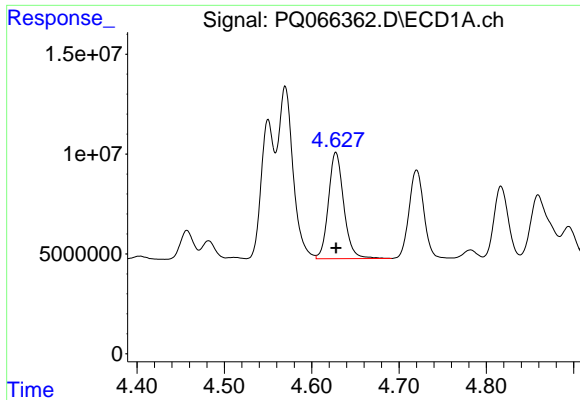
#4 AR-1016-2

R.T.: 4.570 min
 Delta R.T.: 0.000 min
 Response: 103374725
 Conc: 516.22 ng/ml



#4 AR-1016-2

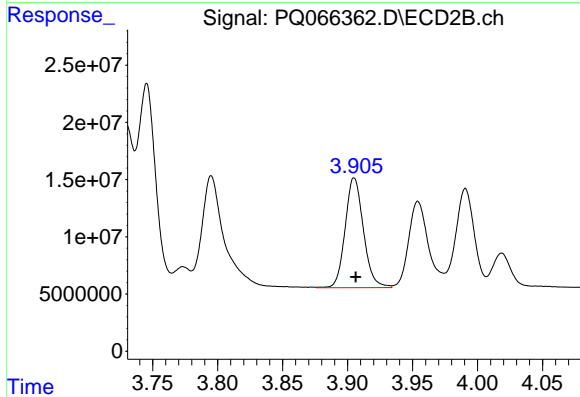
R.T.: 3.745 min
 Delta R.T.: 0.000 min
 Response: 170964557
 Conc: 505.06 ng/ml



#5 AR-1016-3

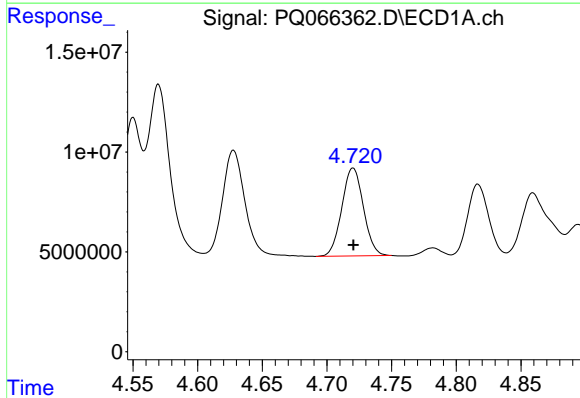
R.T.: 4.628 min
 Delta R.T.: 0.000 min
 Response: 64916903
 Conc: 517.55 ng/ml

Instrument :
 ECD_Q
 ClientSampleId :
 AR1660CCC500



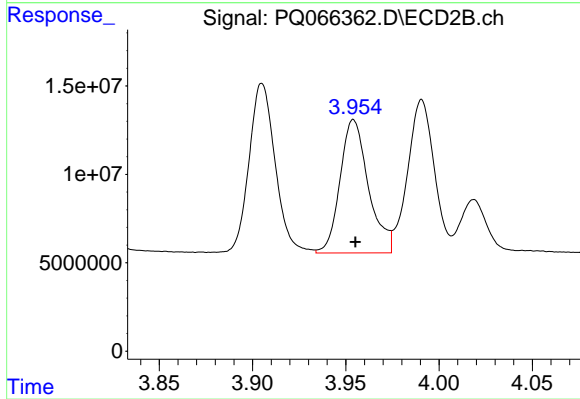
#5 AR-1016-3

R.T.: 3.905 min
 Delta R.T.: -0.001 min
 Response: 94084447
 Conc: 502.07 ng/ml



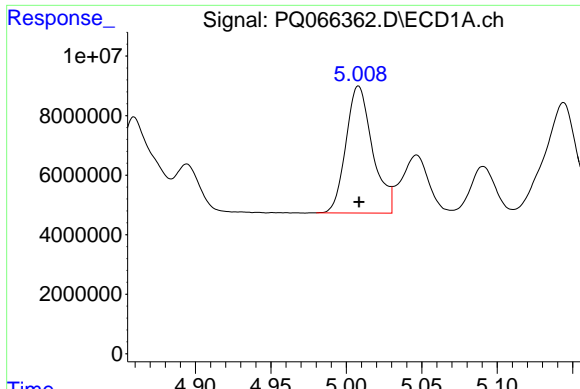
#6 AR-1016-4

R.T.: 4.720 min
 Delta R.T.: 0.000 min
 Response: 51229537
 Conc: 512.56 ng/ml



#6 AR-1016-4

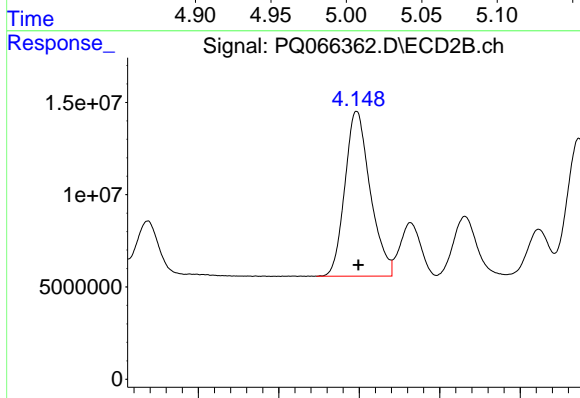
R.T.: 3.954 min
 Delta R.T.: -0.001 min
 Response: 79897532
 Conc: 506.62 ng/ml



#7 AR-1016-5

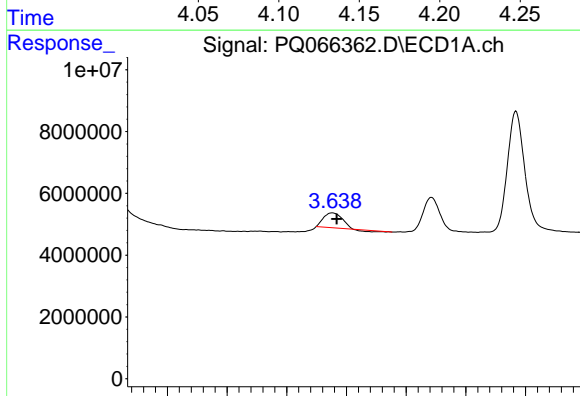
R.T.: 5.008 min
 Delta R.T.: 0.000 min
 Response: 52334235
 Conc: 518.92 ng/ml

Instrument :
 ECD_Q
 ClientSampleId :
 AR1660CCC500



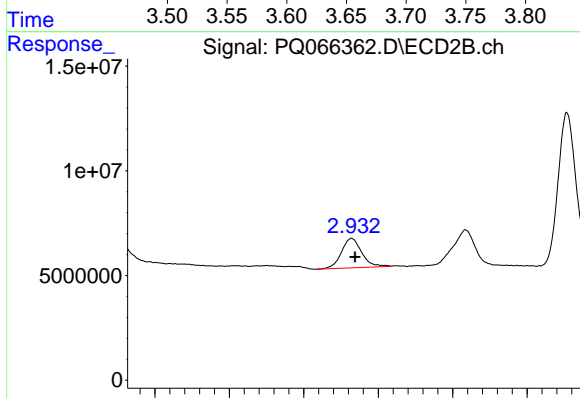
#7 AR-1016-5

R.T.: 4.149 min
 Delta R.T.: 0.000 min
 Response: 97600313
 Conc: 503.15 ng/ml



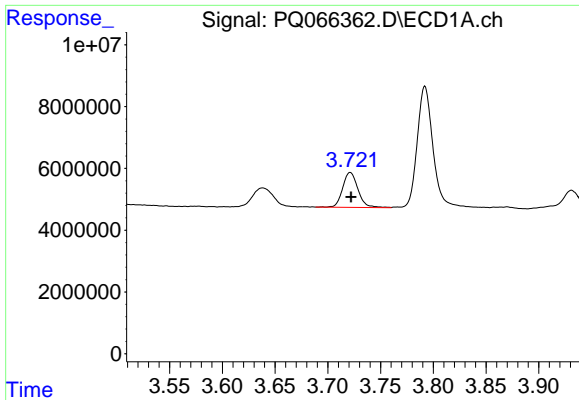
#8 AR-1221-1

R.T.: 3.638 min
 Delta R.T.: -0.004 min
 Response: 4887487
 Conc: 130.78 ng/ml



#8 AR-1221-1

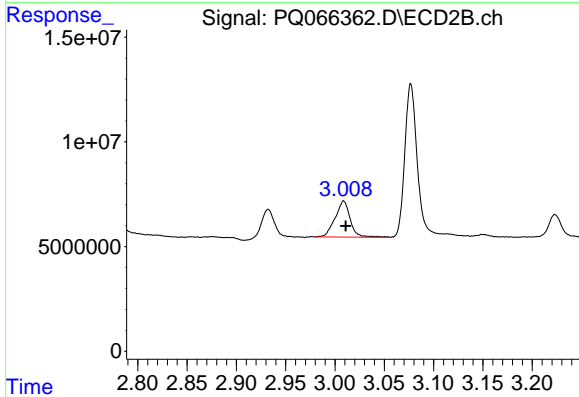
R.T.: 2.932 min
 Delta R.T.: -0.002 min
 Response: 13405945
 Conc: 159.16 ng/ml



#9 AR-1221-2

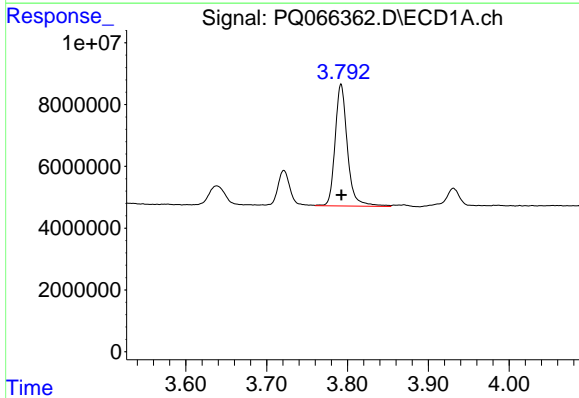
R.T.: 3.721 min
 Delta R.T.: 0.000 min
 Response: 11484348
 Conc: 297.18 ng/ml

Instrument :
 ECD_Q
 ClientSampleId :
 AR1660CCC500



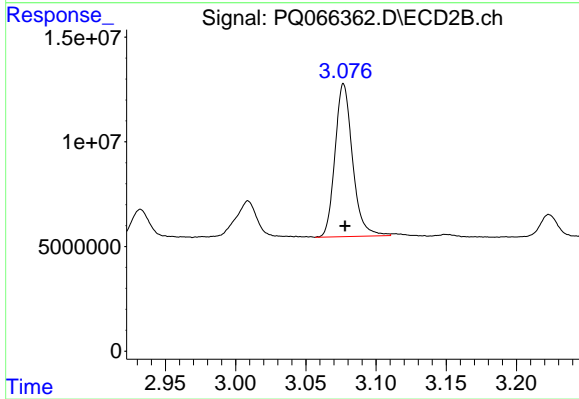
#9 AR-1221-2

R.T.: 3.009 min
 Delta R.T.: -0.002 min
 Response: 18362222
 Conc: 303.58 ng/ml



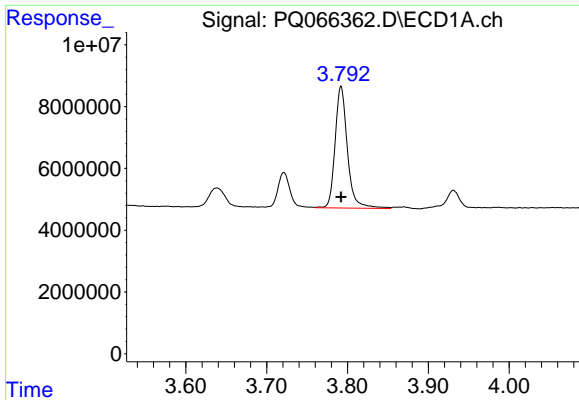
#10 AR-1221-3

R.T.: 3.792 min
 Delta R.T.: 0.000 min
 Response: 41760962
 Conc: 341.13 ng/ml



#10 AR-1221-3

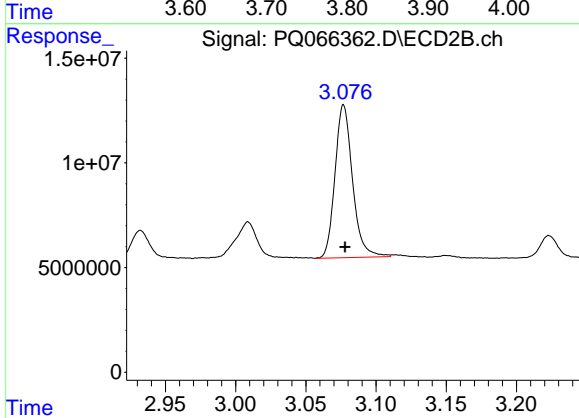
R.T.: 3.077 min
 Delta R.T.: 0.000 min
 Response: 63437713
 Conc: 338.74 ng/ml



#11 AR-1232-1

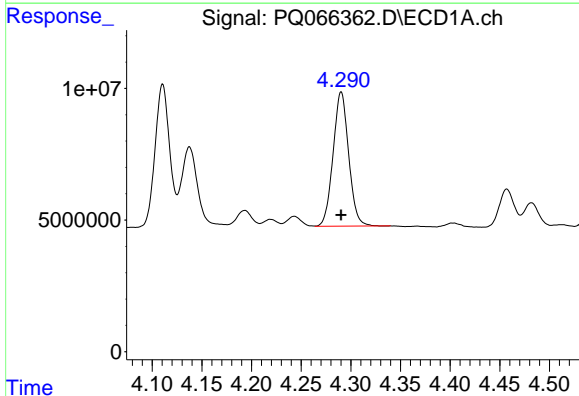
R.T.: 3.792 min
 Delta R.T.: 0.000 min
 Response: 41760962
 Conc: 413.51 ng/ml

Instrument :
 ECD_Q
 ClientSampleId :
 AR1660CCC500



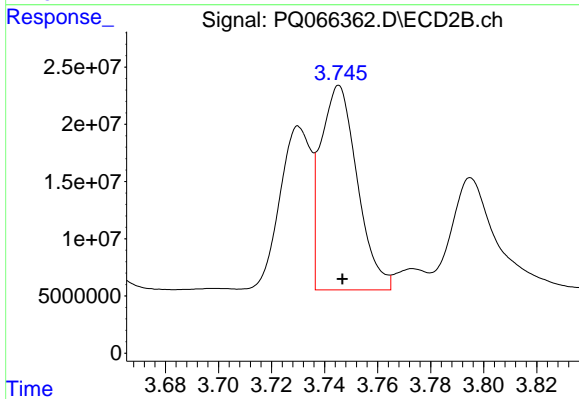
#11 AR-1232-1

R.T.: 3.077 min
 Delta R.T.: -0.001 min
 Response: 63437713
 Conc: 412.19 ng/ml



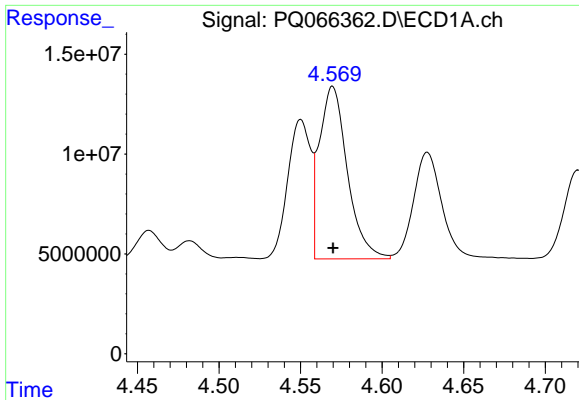
#12 AR-1232-2

R.T.: 4.290 min
 Delta R.T.: 0.000 min
 Response: 55597550
 Conc: 1008.52 ng/ml



#12 AR-1232-2

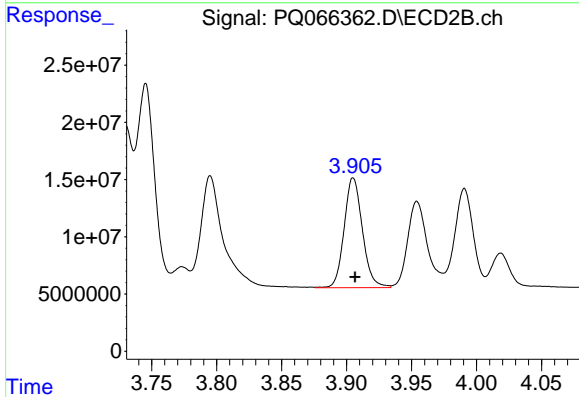
R.T.: 3.745 min
 Delta R.T.: -0.001 min
 Response: 170964557
 Conc: 1061.02 ng/ml



#13 AR-1232-3

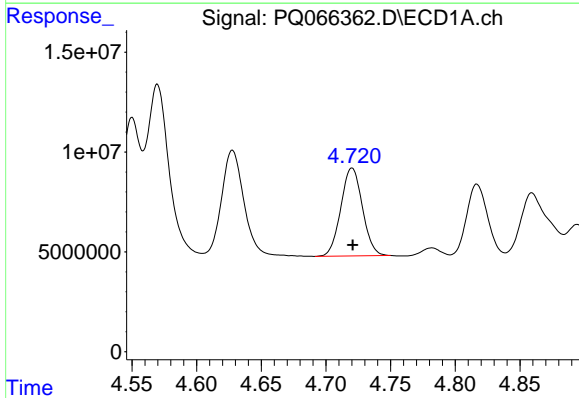
R.T.: 4.570 min
 Delta R.T.: 0.000 min
 Response: 103374725
 Conc: 1072.29 ng/ml

Instrument :
 ECD_Q
 ClientSampleId :
 AR1660CCC500



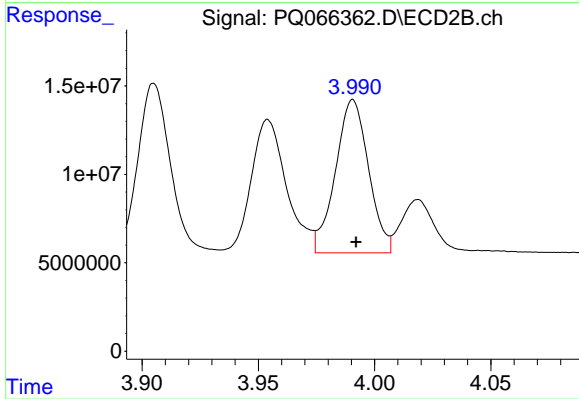
#13 AR-1232-3

R.T.: 3.905 min
 Delta R.T.: -0.002 min
 Response: 94084447
 Conc: 1066.92 ng/ml



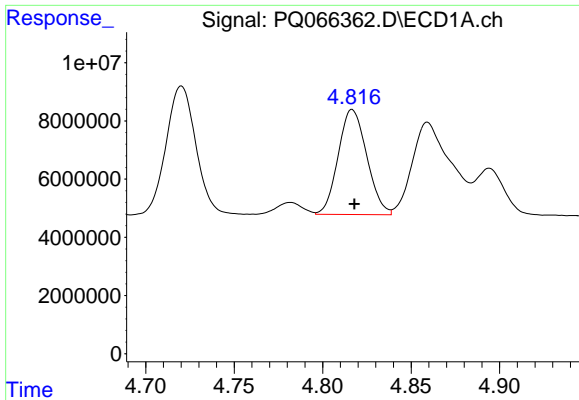
#14 AR-1232-4

R.T.: 4.720 min
 Delta R.T.: 0.000 min
 Response: 51229537
 Conc: 1082.20 ng/ml



#14 AR-1232-4

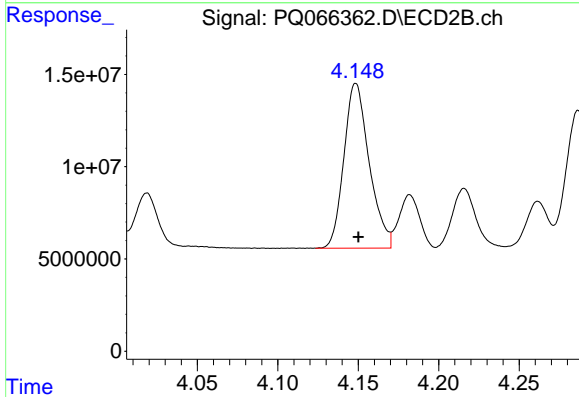
R.T.: 3.991 min
 Delta R.T.: -0.001 min
 Response: 85965258
 Conc: 1141.03 ng/ml



#15 AR-1232-5

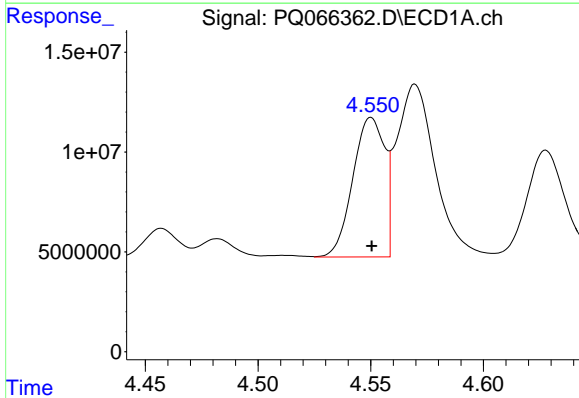
R.T.: 4.817 min
 Delta R.T.: -0.001 min
 Response: 40560700
 Conc: 1218.20 ng/ml

Instrument :
 ECD_Q
 ClientSampleId :
 AR1660CCC500



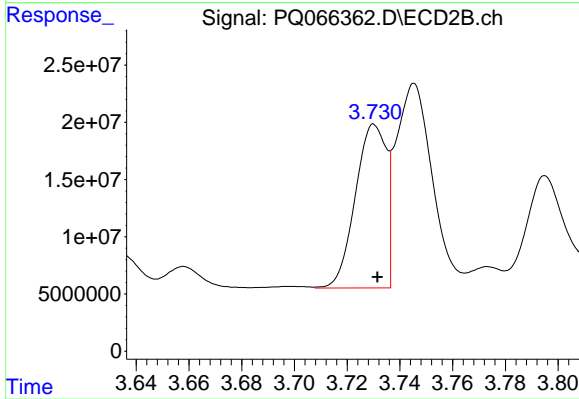
#15 AR-1232-5

R.T.: 4.149 min
 Delta R.T.: -0.002 min
 Response: 97600313
 Conc: 1157.48 ng/ml



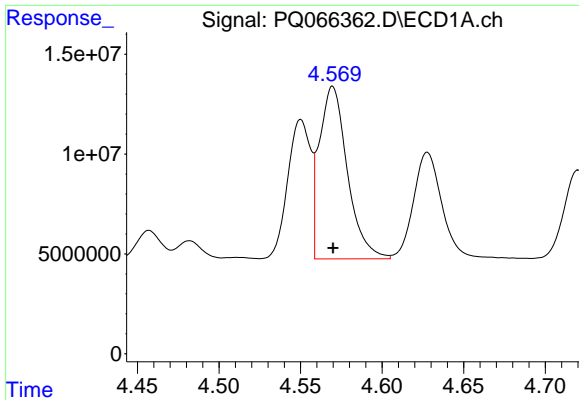
#16 AR-1242-1

R.T.: 4.550 min
 Delta R.T.: 0.000 min
 Response: 68434983
 Conc: 617.80 ng/ml



#16 AR-1242-1

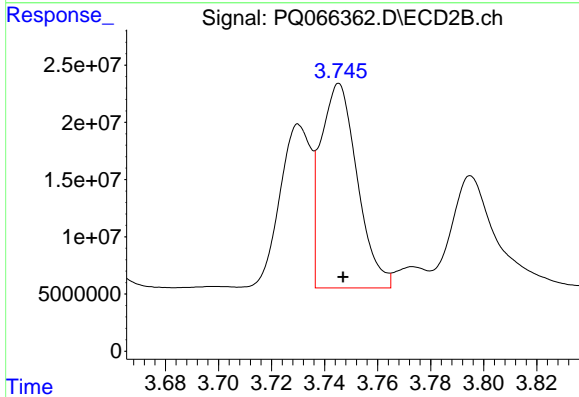
R.T.: 3.730 min
 Delta R.T.: -0.001 min
 Response: 116380900
 Conc: 586.76 ng/ml



#17 AR-1242-2

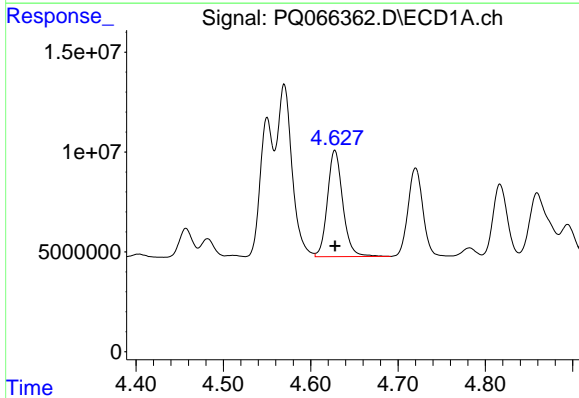
R.T.: 4.570 min
 Delta R.T.: 0.000 min
 Response: 103374725
 Conc: 611.84 ng/ml

Instrument :
 ECD_Q
 ClientSampleId :
 AR1660CCC500



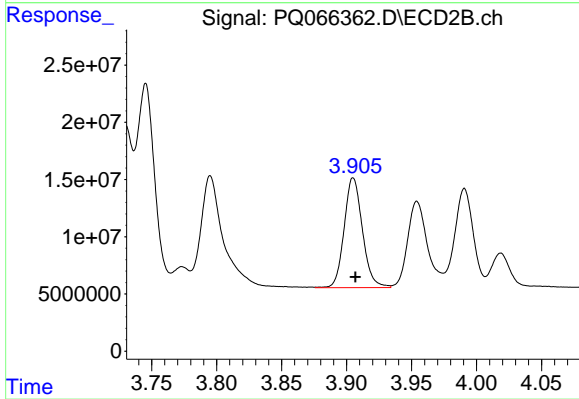
#17 AR-1242-2

R.T.: 3.745 min
 Delta R.T.: -0.002 min
 Response: 170964557
 Conc: 604.51 ng/ml



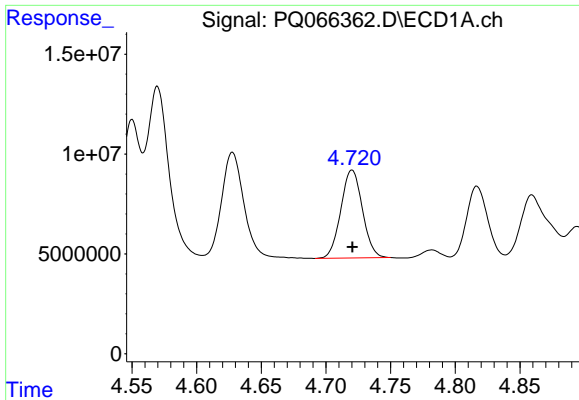
#18 AR-1242-3

R.T.: 4.628 min
 Delta R.T.: 0.000 min
 Response: 64916903
 Conc: 613.34 ng/ml



#18 AR-1242-3

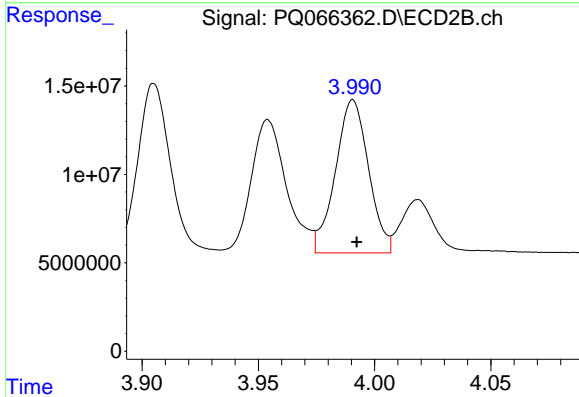
R.T.: 3.905 min
 Delta R.T.: -0.002 min
 Response: 94084447
 Conc: 599.65 ng/ml



#19 AR-1242-4

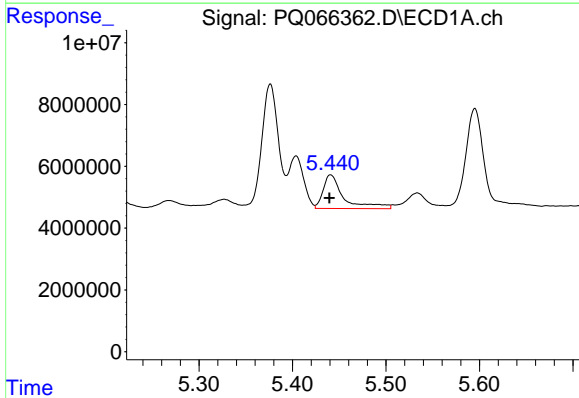
R.T.: 4.720 min
 Delta R.T.: 0.000 min
 Response: 51229537
 Conc: 614.41 ng/ml

Instrument :
 ECD_Q
 ClientSampleId :
 AR1660CCC500



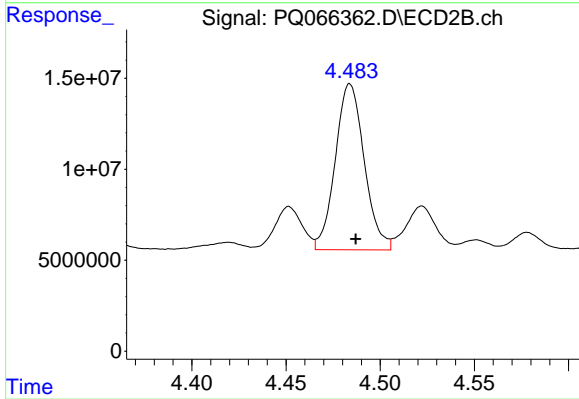
#19 AR-1242-4

R.T.: 3.991 min
 Delta R.T.: -0.002 min
 Response: 85965258
 Conc: 586.02 ng/ml



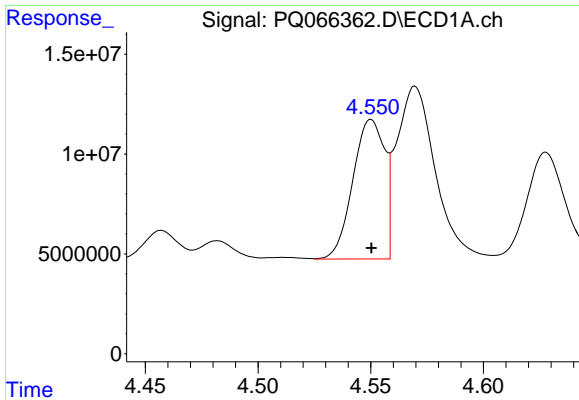
#20 AR-1242-5

R.T.: 5.441 min
 Delta R.T.: 0.001 min
 Response: 16661394
 Conc: 188.59 ng/ml



#20 AR-1242-5

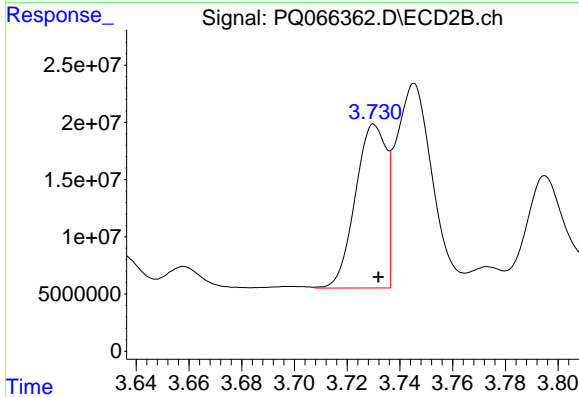
R.T.: 4.484 min
 Delta R.T.: -0.003 min
 Response: 97711843
 Conc: 508.22 ng/ml



#21 AR-1248-1

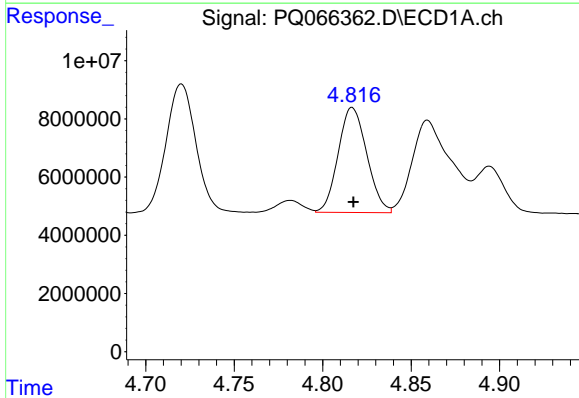
R.T.: 4.550 min
 Delta R.T.: 0.000 min
 Response: 68434983
 Conc: 846.74 ng/ml

Instrument :
 ECD_Q
 ClientSampleId :
 AR1660CCC500



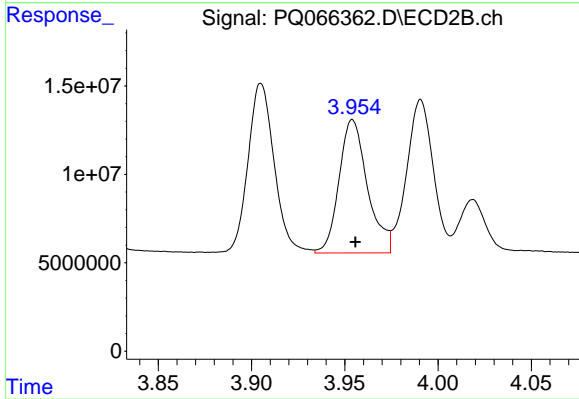
#21 AR-1248-1

R.T.: 3.730 min
 Delta R.T.: -0.002 min
 Response: 116380900
 Conc: 782.03 ng/ml



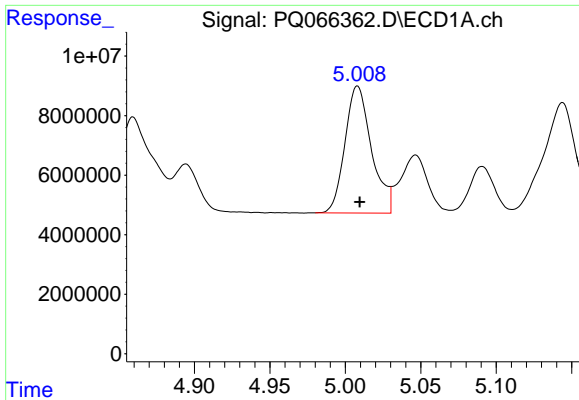
#22 AR-1248-2

R.T.: 4.817 min
 Delta R.T.: 0.000 min
 Response: 40560700
 Conc: 351.76 ng/ml



#22 AR-1248-2

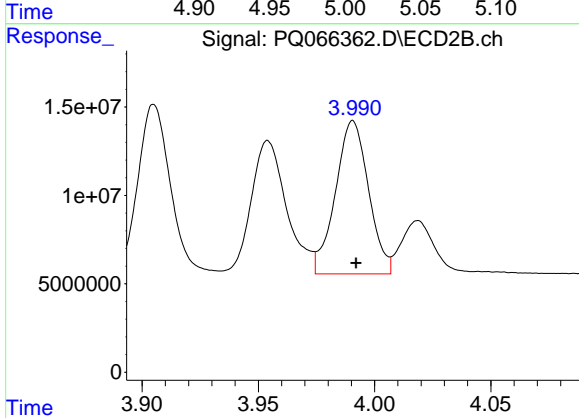
R.T.: 3.954 min
 Delta R.T.: -0.001 min
 Response: 79897532
 Conc: 361.04 ng/ml



#23 AR-1248-3

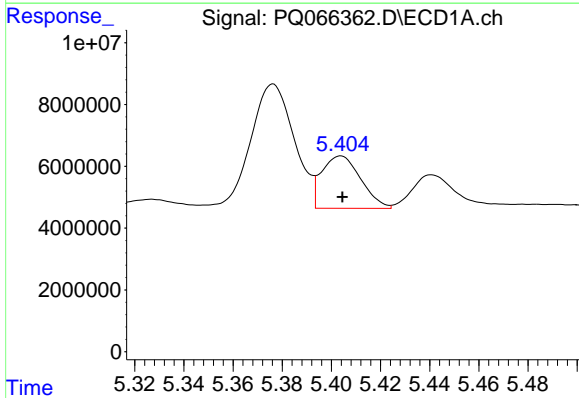
R.T.: 5.008 min
 Delta R.T.: -0.001 min
 Response: 52334235
 Conc: 380.98 ng/ml

Instrument :
 ECD_Q
 ClientSampleId :
 AR1660CCC500



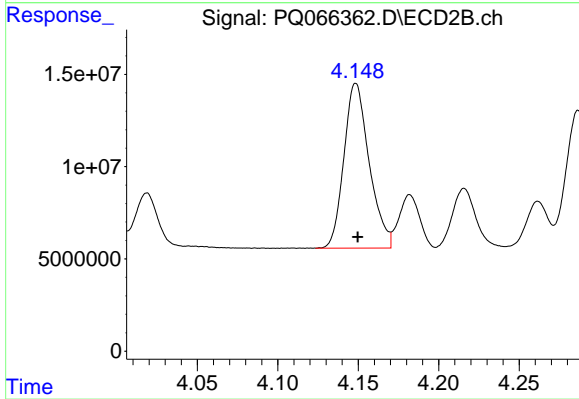
#23 AR-1248-3

R.T.: 3.991 min
 Delta R.T.: -0.001 min
 Response: 85965258
 Conc: 406.49 ng/ml



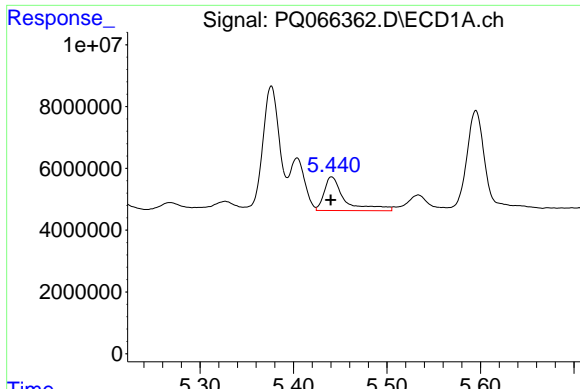
#24 AR-1248-4

R.T.: 5.404 min
 Delta R.T.: 0.000 min
 Response: 18707708
 Conc: 129.81 ng/ml



#24 AR-1248-4

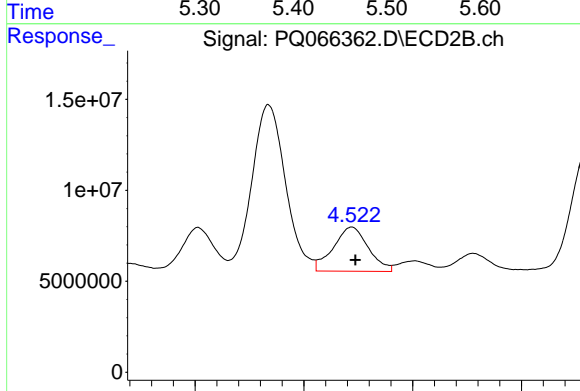
R.T.: 4.149 min
 Delta R.T.: -0.001 min
 Response: 97600313
 Conc: 378.95 ng/ml



#25 AR-1248-5

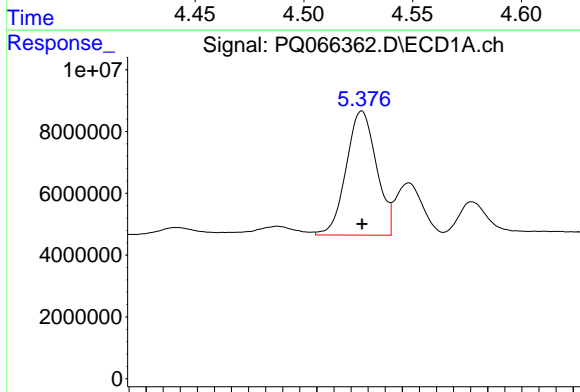
R.T.: 5.441 min
 Delta R.T.: 0.001 min
 Response: 16661394
 Conc: 113.98 ng/ml

Instrument :
 ECD_Q
 ClientSampleId :
 AR1660CCC500



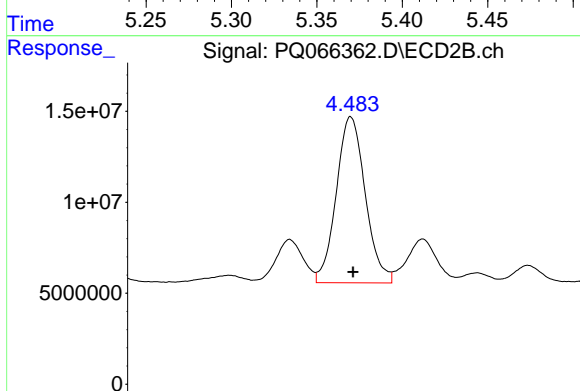
#25 AR-1248-5

R.T.: 4.522 min
 Delta R.T.: -0.001 min
 Response: 27204858
 Conc: 105.41 ng/ml



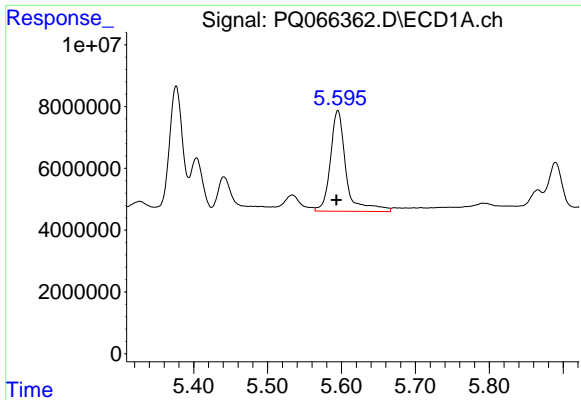
#26 AR-1254-1

R.T.: 5.376 min
 Delta R.T.: 0.000 min
 Response: 49435331
 Conc: 329.06 ng/ml



#26 AR-1254-1

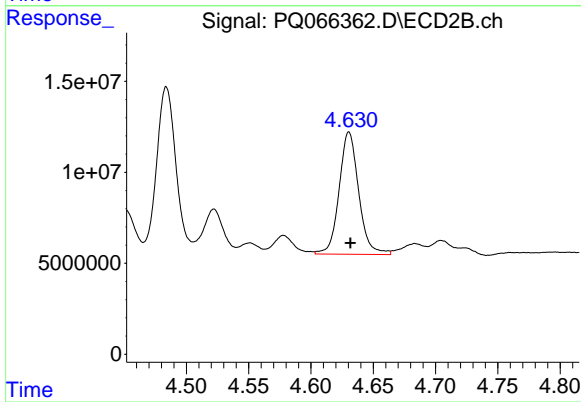
R.T.: 4.484 min
 Delta R.T.: -0.001 min
 Response: 97711843
 Conc: 248.43 ng/ml



#27 AR-1254-2

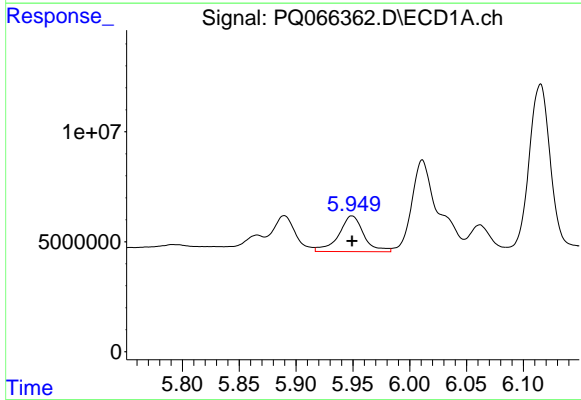
R.T.: 5.595 min
 Delta R.T.: 0.002 min
 Response: 48043844
 Conc: 203.76 ng/ml

Instrument :
 ECD_Q
 ClientSampleId :
 AR1660CCC500



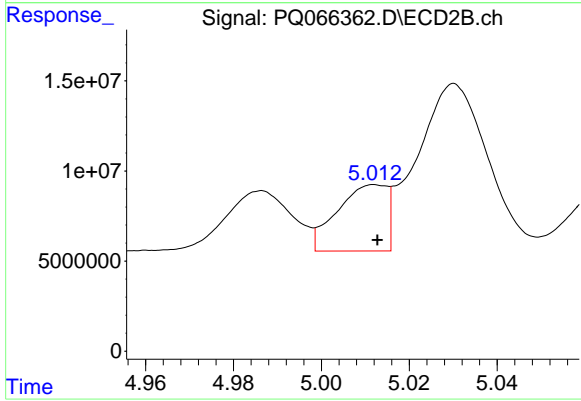
#27 AR-1254-2

R.T.: 4.631 min
 Delta R.T.: -0.001 min
 Response: 73631849
 Conc: 216.03 ng/ml



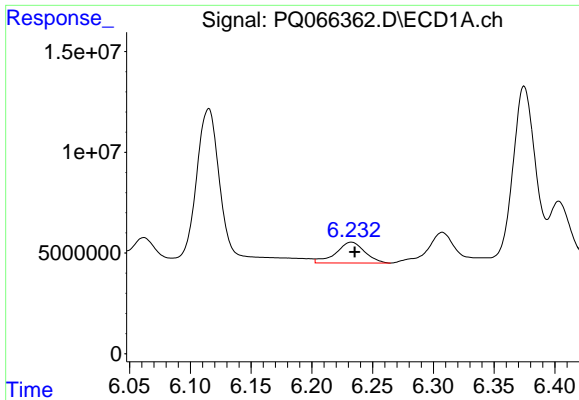
#28 AR-1254-3

R.T.: 5.949 min
 Delta R.T.: 0.000 min
 Response: 24893285
 Conc: 101.30 ng/ml



#28 AR-1254-3

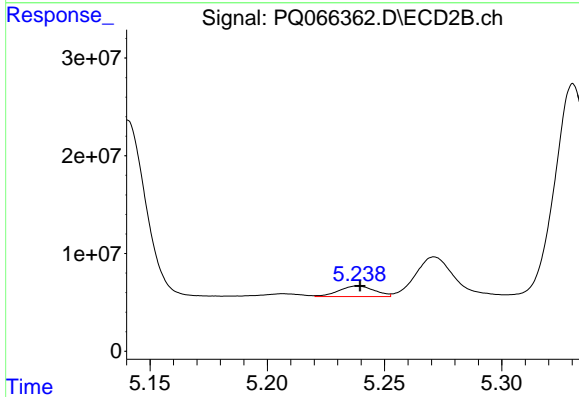
R.T.: 5.012 min
 Delta R.T.: 0.000 min
 Response: 28690490
 Conc: 53.12 ng/ml



#29 AR-1254-4

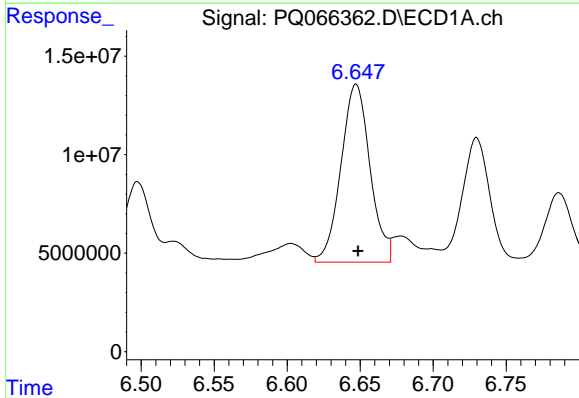
R.T.: 6.233 min
 Delta R.T.: -0.002 min
 Response: 17027374
 Conc: 97.77 ng/ml

Instrument :
 ECD_Q
 ClientSampleId :
 AR1660CCC500



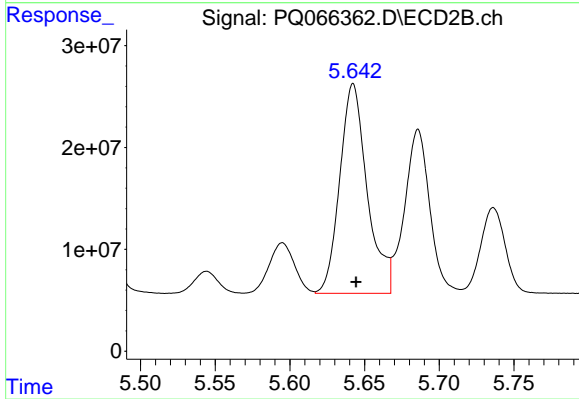
#29 AR-1254-4

R.T.: 5.239 min
 Delta R.T.: 0.000 min
 Response: 11524826
 Conc: 31.02 ng/ml



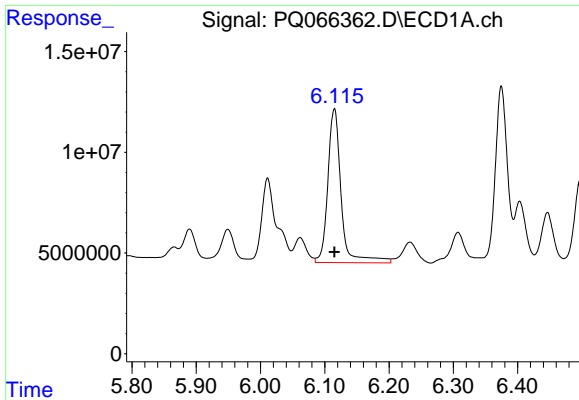
#30 AR-1254-5

R.T.: 6.647 min
 Delta R.T.: -0.001 min
 Response: 125366626
 Conc: 682.58 ng/ml



#30 AR-1254-5

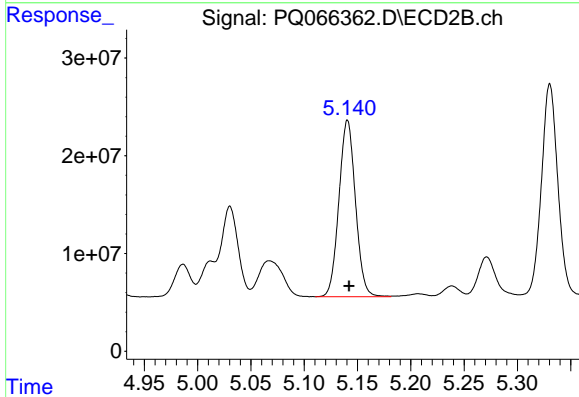
R.T.: 5.642 min
 Delta R.T.: -0.002 min
 Response: 263035485
 Conc: 539.87 ng/ml



#31 AR-1260-1

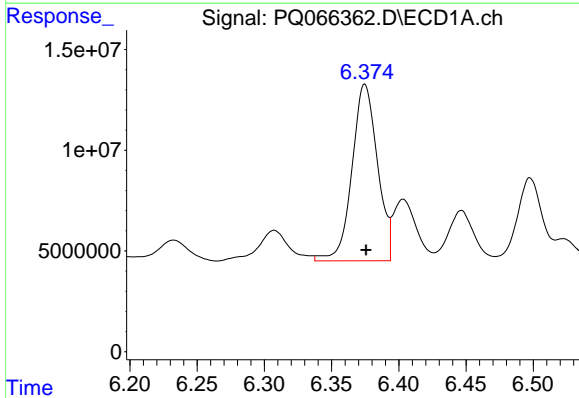
R.T.: 6.115 min
 Delta R.T.: 0.000 min
 Response: 110070185
 Conc: 608.32 ng/ml

Instrument :
 ECD_Q
 ClientSampleId :
 AR1660CCC500



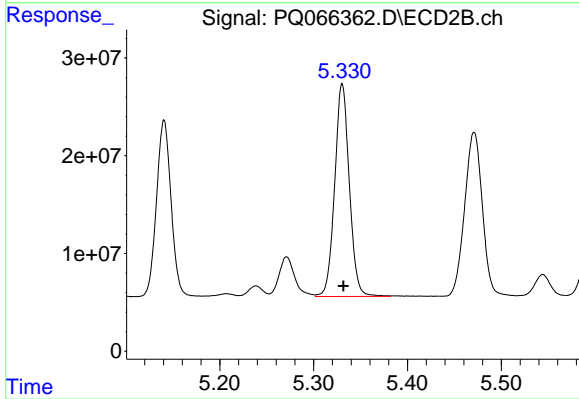
#31 AR-1260-1

R.T.: 5.141 min
 Delta R.T.: -0.002 min
 Response: 195252060
 Conc: 498.52 ng/ml



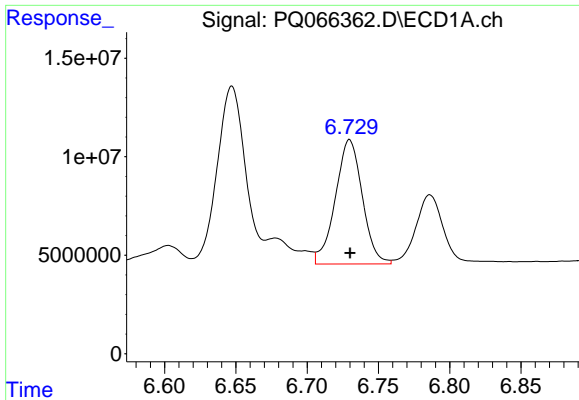
#32 AR-1260-2

R.T.: 6.375 min
 Delta R.T.: 0.000 min
 Response: 115735065
 Conc: 546.04 ng/ml



#32 AR-1260-2

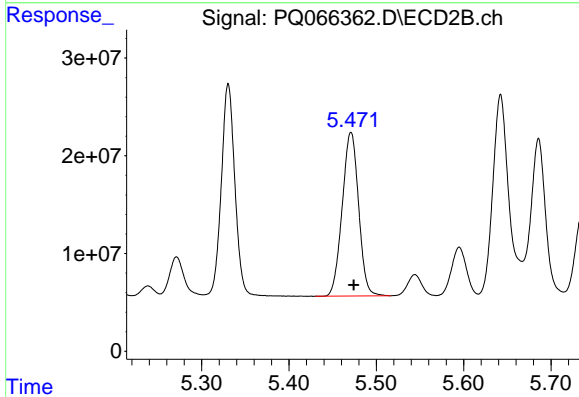
R.T.: 5.330 min
 Delta R.T.: -0.001 min
 Response: 235813819
 Conc: 494.78 ng/ml



#33 AR-1260-3

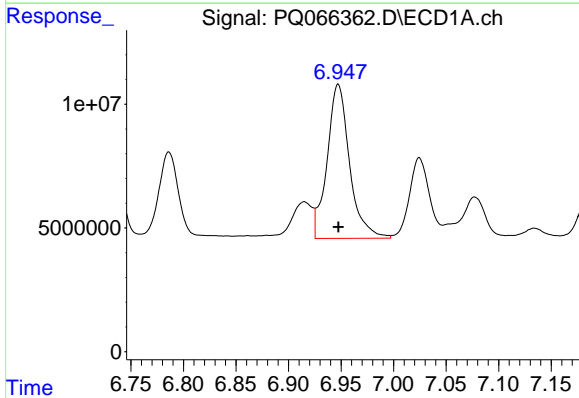
R.T.: 6.730 min
 Delta R.T.: 0.000 min
 Response: 83185805
 Conc: 540.89 ng/ml

Instrument :
 ECD_Q
 ClientSampleId :
 AR1660CCC500



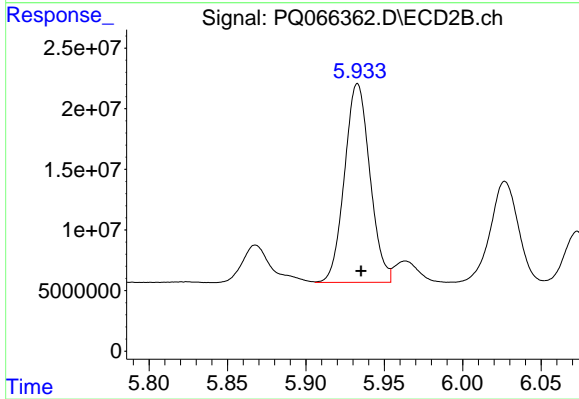
#33 AR-1260-3

R.T.: 5.471 min
 Delta R.T.: -0.003 min
 Response: 218550759
 Conc: 496.42 ng/ml



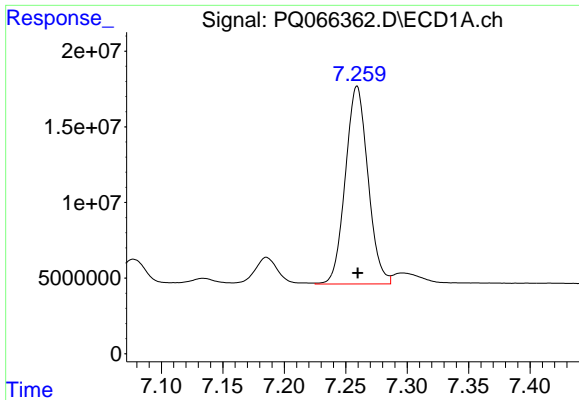
#34 AR-1260-4

R.T.: 6.947 min
 Delta R.T.: 0.000 min
 Response: 92635601
 Conc: 532.67 ng/ml



#34 AR-1260-4

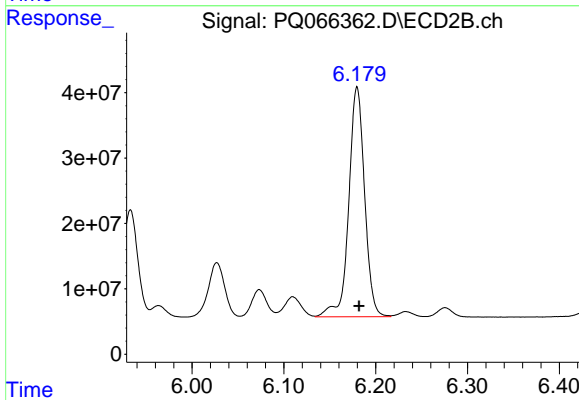
R.T.: 5.933 min
 Delta R.T.: -0.002 min
 Response: 184680702
 Conc: 485.06 ng/ml



#35 AR-1260-5

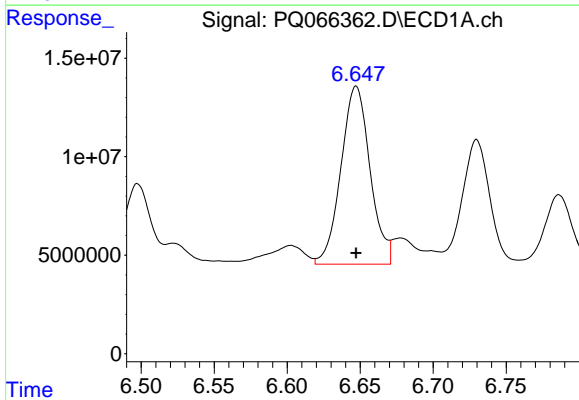
R.T.: 7.259 min
 Delta R.T.: 0.000 min
 Response: 167262417
 Conc: 510.88 ng/ml

Instrument :
 ECD_Q
 ClientSampleId :
 AR1660CCC500



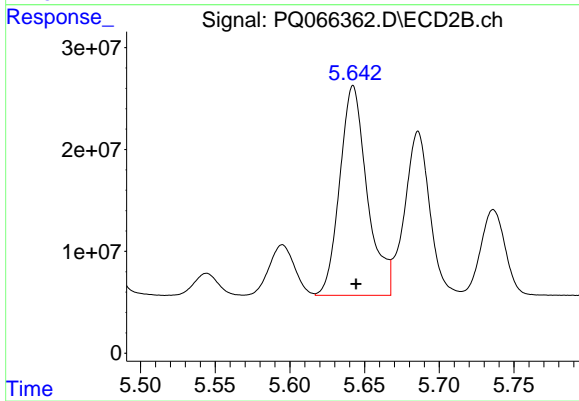
#35 AR-1260-5

R.T.: 6.180 min
 Delta R.T.: -0.002 min
 Response: 420825457
 Conc: 513.75 ng/ml



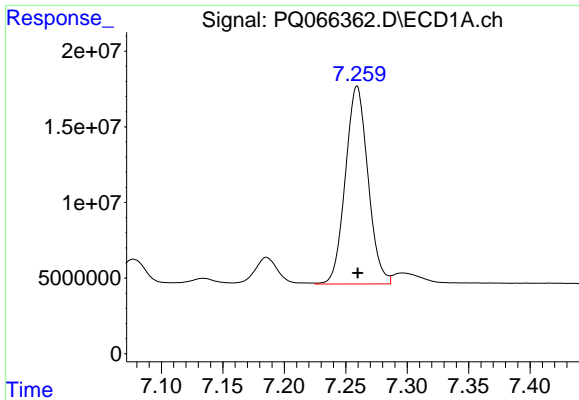
#36 AR-1262-1

R.T.: 6.647 min
 Delta R.T.: 0.000 min
 Response: 125366626
 Conc: 853.55 ng/ml



#36 AR-1262-1

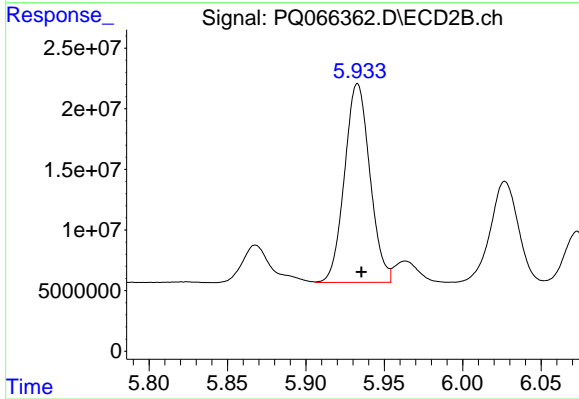
R.T.: 5.642 min
 Delta R.T.: -0.002 min
 Response: 263035485
 Conc: 941.98 ng/ml



#37 AR-1262-2

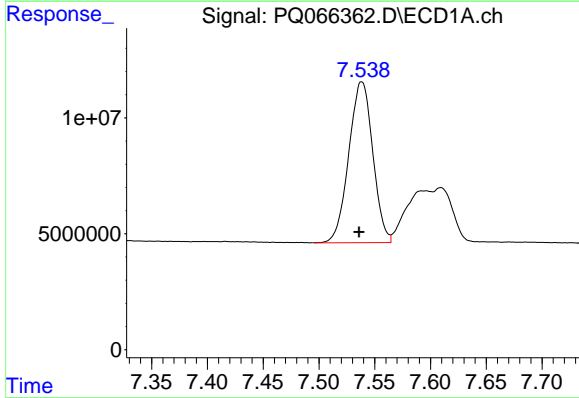
R.T.: 7.259 min
 Delta R.T.: 0.000 min
 Response: 167262417
 Conc: 456.38 ng/ml

Instrument :
 ECD_Q
 ClientSampleId :
 AR1660CCC500



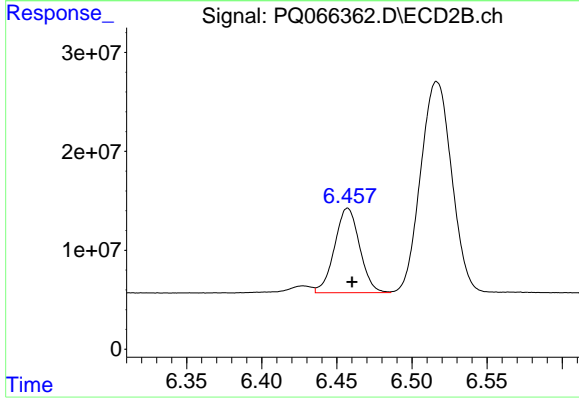
#37 AR-1262-2

R.T.: 5.933 min
 Delta R.T.: -0.003 min
 Response: 184680702
 Conc: 388.42 ng/ml



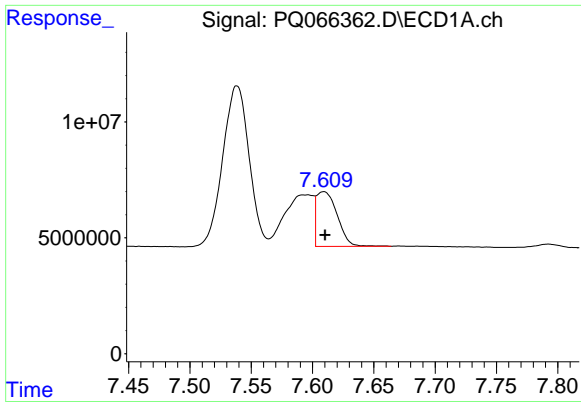
#38 AR-1262-3

R.T.: 7.538 min
 Delta R.T.: 0.002 min
 Response: 103952270
 Conc: 432.02 ng/ml



#38 AR-1262-3

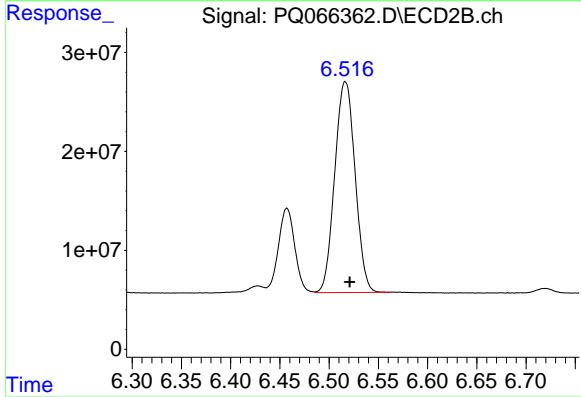
R.T.: 6.457 min
 Delta R.T.: -0.003 min
 Response: 99209174
 Conc: 262.68 ng/ml



#39 AR-1262-4

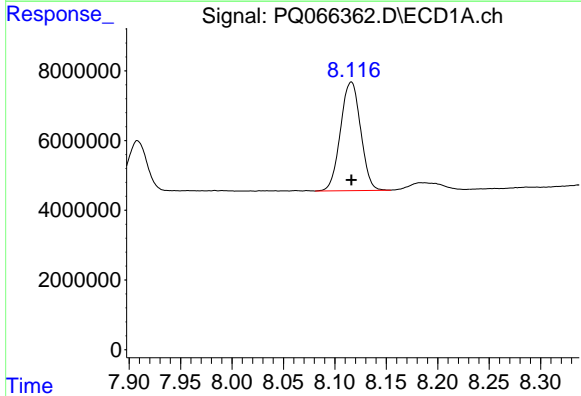
R.T.: 7.609 min
 Delta R.T.: -0.001 min
 Response: 27795978
 Conc: 149.72 ng/ml

Instrument :
 ECD_Q
 ClientSampleId :
 AR1660CCC500



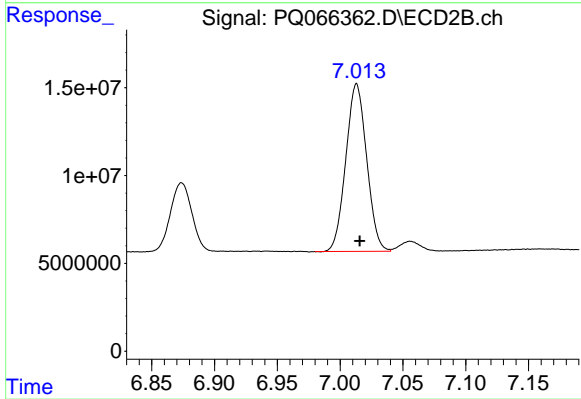
#39 AR-1262-4

R.T.: 6.517 min
 Delta R.T.: -0.005 min
 Response: 306591209
 Conc: 439.29 ng/ml



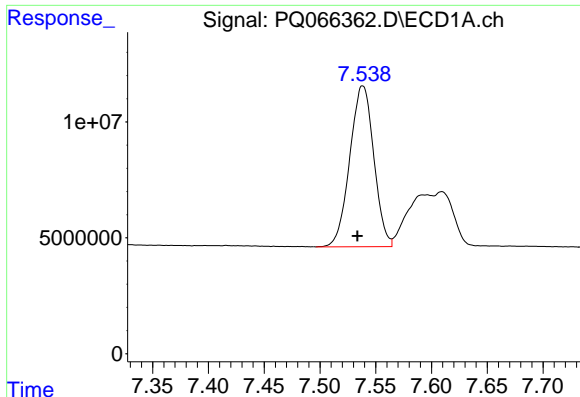
#40 AR-1262-5

R.T.: 8.116 min
 Delta R.T.: 0.000 min
 Response: 42522681
 Conc: 343.77 ng/ml



#40 AR-1262-5

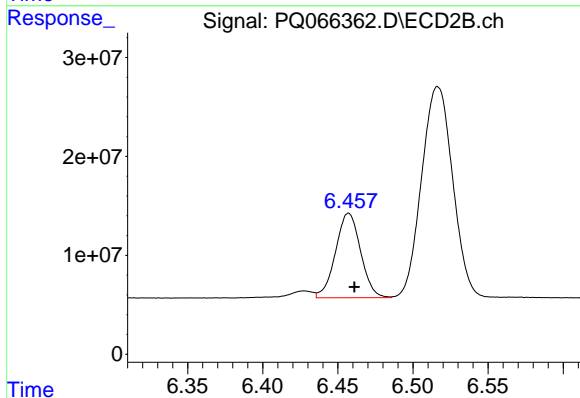
R.T.: 7.013 min
 Delta R.T.: -0.002 min
 Response: 110294499
 Conc: 335.13 ng/ml



#41 AR-1268-1

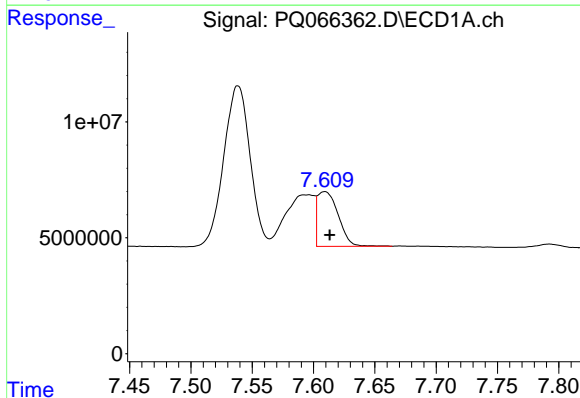
R.T.: 7.538 min
 Delta R.T.: 0.005 min
 Response: 103952270
 Conc: 248.15 ng/ml

Instrument :
 ECD_Q
 ClientSampleId :
 AR1660CCC500



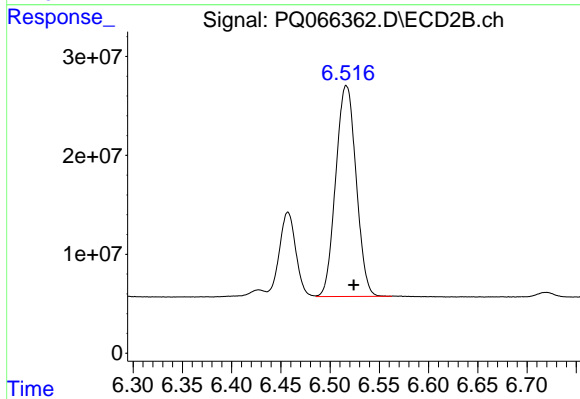
#41 AR-1268-1

R.T.: 6.457 min
 Delta R.T.: -0.004 min
 Response: 99209174
 Conc: 88.54 ng/ml



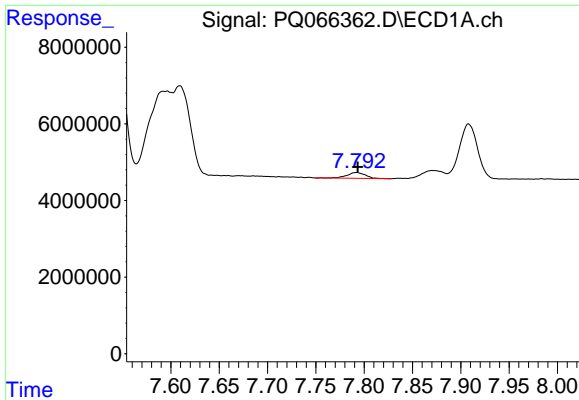
#42 AR-1268-2

R.T.: 7.609 min
 Delta R.T.: -0.004 min
 Response: 27795978
 Conc: 71.46 ng/ml



#42 AR-1268-2

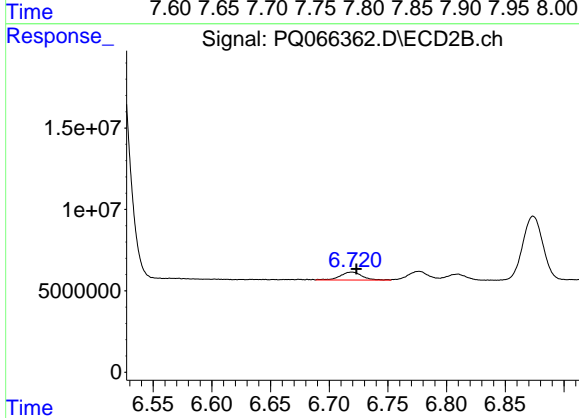
R.T.: 6.517 min
 Delta R.T.: -0.008 min
 Response: 306591209
 Conc: 300.53 ng/ml



#43 AR-1268-3

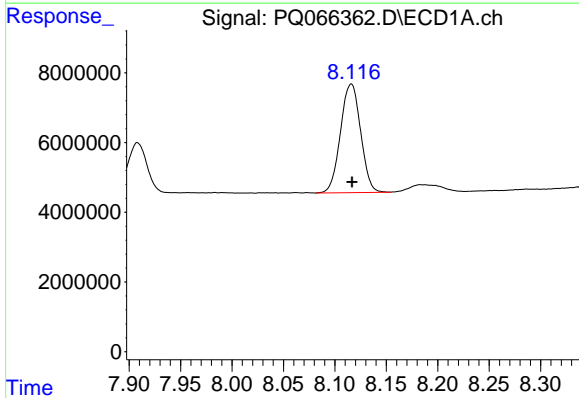
R.T.: 7.792 min
 Delta R.T.: -0.001 min
 Response: 1981520
 Conc: 6.17 ng/ml

Instrument :
 ECD_Q
 ClientSampleId :
 AR1660CCC500



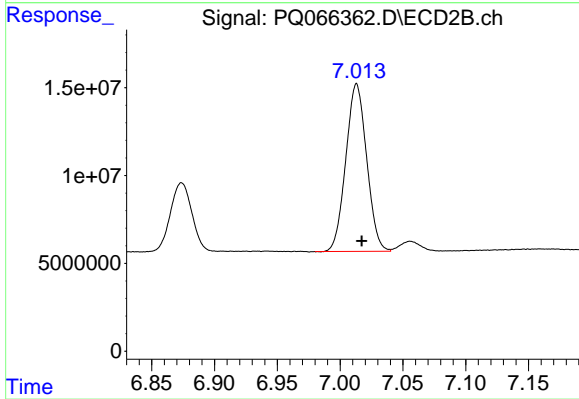
#43 AR-1268-3

R.T.: 6.719 min
 Delta R.T.: -0.004 min
 Response: 6213806
 Conc: 6.99 ng/ml



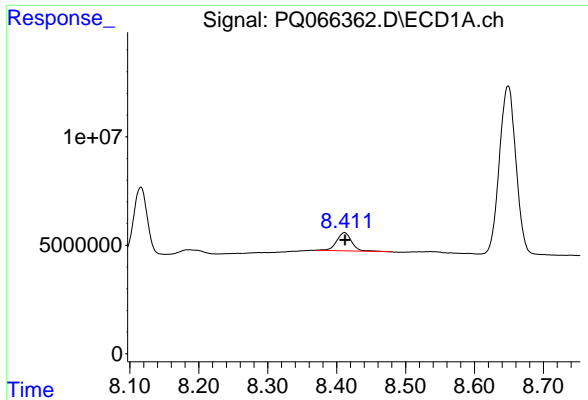
#44 AR-1268-4

R.T.: 8.116 min
 Delta R.T.: 0.000 min
 Response: 42522681
 Conc: 300.09 ng/ml



#44 AR-1268-4

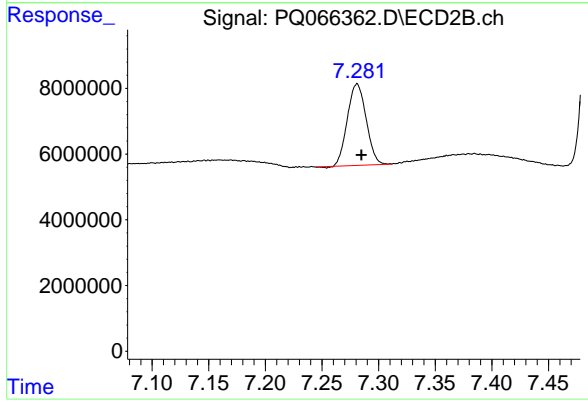
R.T.: 7.013 min
 Delta R.T.: -0.004 min
 Response: 110294499
 Conc: 296.55 ng/ml



#45 AR-1268-5

R.T.: 8.411 min
 Delta R.T.: 0.000 min
 Response: 12591579
 Conc: 13.29 ng/ml

Instrument :
 ECD_Q
 ClientSampleId :
 AR1660CCC500



#45 AR-1268-5

R.T.: 7.281 min
 Delta R.T.: -0.004 min
 Response: 28573387
 Conc: 10.90 ng/ml