

Data Path : Z:\pestpcbsrv\HPCHEM1\ECD_Q\Data\PQ050624\
 Data File : PQ066402.D
 Signal(s) : Signal #1: ECD1A.ch Signal #2: ECD2B.ch
 Acq On : 06 May 2024 21:31
 Operator : YP\AJ
 Sample : P2391-08
 Misc :
 ALS Vial : 32 Sample Multiplier: 1

Instrument :
 ECD_Q
 ClientSampleId :
 PE-5

Integration File signal 1: autoint1.e
 Integration File signal 2: autoint2.e
 Quant Time: May 07 01:20:03 2024
 Quant Method : Z:\pestpcbsrv\HPCHEM1\ECD_Q\Method\PQ042324.M
 Quant Title : GC EXTRACTABLES
 QLast Update : Wed Apr 24 04:24:21 2024
 Response via : Initial Calibration
 Integrator: ChemStation

Volume Inj. : 2 µl
 Signal #1 Phase : ZB-MR1 Signal #2 Phase: ZB-MR2
 Signal #1 Info : 30Mx0.32mmx 0.50µ Signal #2 Info : 30M x 0.32mm x 0.25µm

Compound	RT#1	RT#2	Resp#1	Resp#2	ng/ml	ng/ml

System Monitoring Compounds						
1) SA Tetrachlo...	3.444	2.740	43272935	61578562	9.954	9.626
2) SA Decachlor...	8.650	7.497	37880066	71507768	15.390	11.366 #

Target Compounds

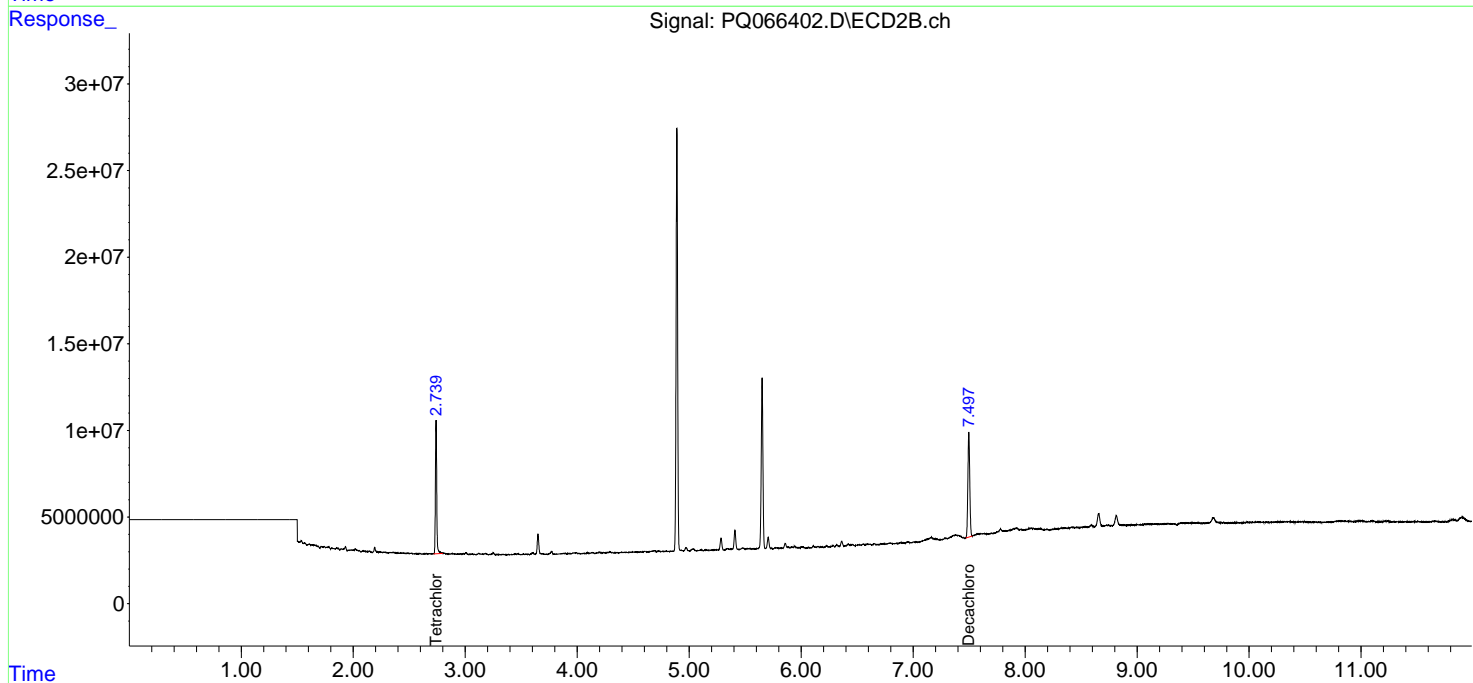
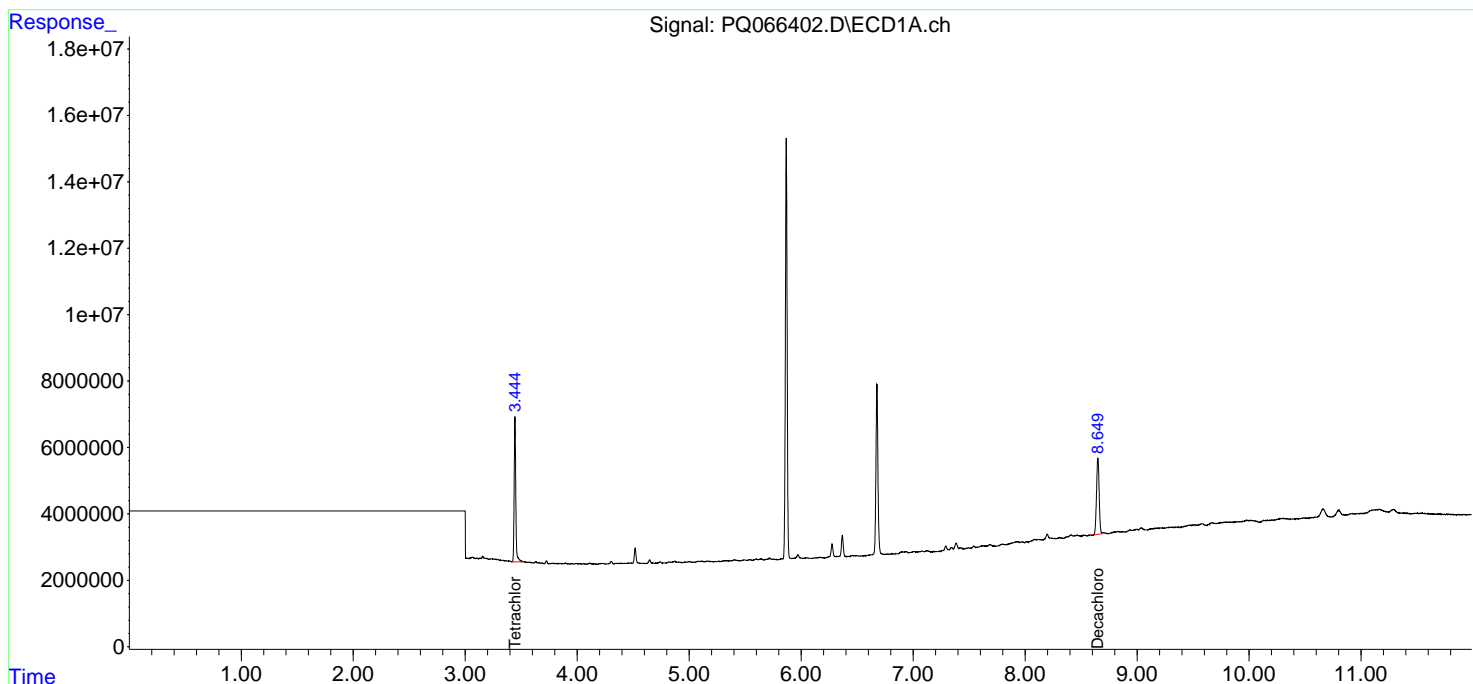
(f)=RT Delta > 1/2 Window (#)=Amounts differ by > 25% (m)=manual int.

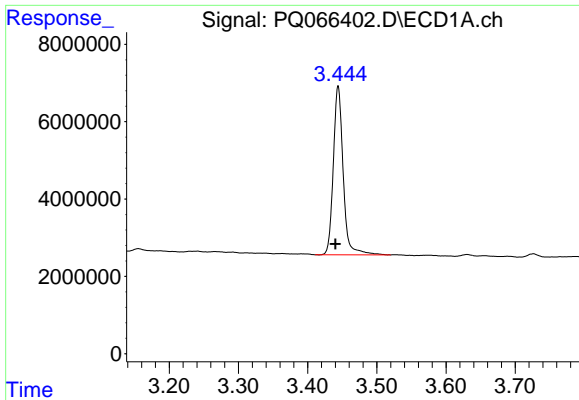
Data Path : Z:\pestpcbsrv\HPCHEM1\ECD_Q\Data\PQ050624\
 Data File : PQ066402.D
 Signal(s) : Signal #1: ECD1A.ch Signal #2: ECD2B.ch
 Acq On : 06 May 2024 21:31
 Operator : YP\AJ
 Sample : P2391-08
 Misc :
 ALS Vial : 32 Sample Multiplier: 1

Instrument :
 ECD_Q
 ClientSampleId :
 PE-5

Integration File signal 1: autoint1.e
 Integration File signal 2: autoint2.e
 Quant Time: May 07 01:20:03 2024
 Quant Method : Z:\pestpcbsrv\HPCHEM1\ECD_Q\Method\PQ042324.M
 Quant Title : GC EXTRACTABLES
 QLast Update : Wed Apr 24 04:24:21 2024
 Response via : Initial Calibration
 Integrator: ChemStation

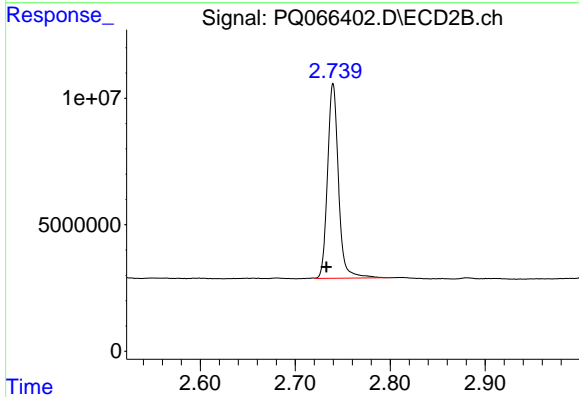
Volume Inj. : 2 µl
 Signal #1 Phase : ZB-MR1 Signal #2 Phase: ZB-MR2
 Signal #1 Info : 30Mx0.32mmx 0.50µ Signal #2 Info : 30M x 0.32mm x 0.25µm



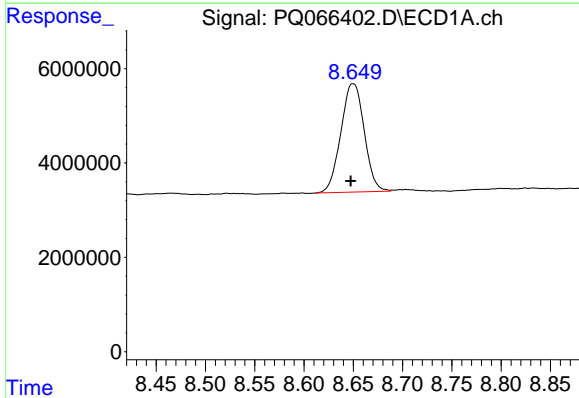


#1 Tetrachloro-m-xylene
 R.T.: 3.444 min
 Delta R.T.: 0.004 min
 Response: 43272935
 Conc: 9.95 ng/ml

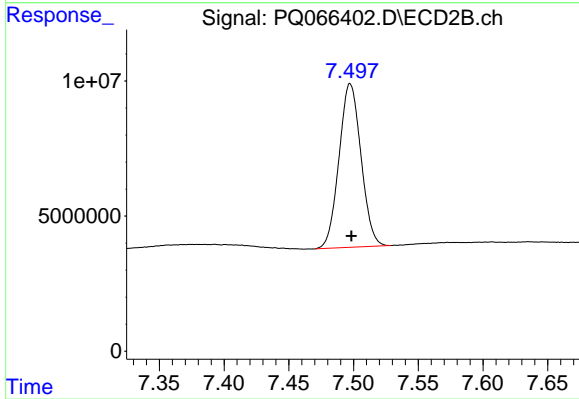
Instrument :
 ECD_Q
 ClientSampleId :
 PE-5



#1 Tetrachloro-m-xylene
 R.T.: 2.740 min
 Delta R.T.: 0.007 min
 Response: 61578562
 Conc: 9.63 ng/ml



#2 Decachlorobiphenyl
 R.T.: 8.650 min
 Delta R.T.: 0.002 min
 Response: 37880066
 Conc: 15.39 ng/ml



#2 Decachlorobiphenyl
 R.T.: 7.497 min
 Delta R.T.: 0.000 min
 Response: 71507768
 Conc: 11.37 ng/ml