

Data Path : Z:\pestpcbsrv\HPCHEM1\ECD_Q\Data\PQ050624\
 Data File : PQ066404.D
 Signal(s) : Signal #1: ECD1A.ch Signal #2: ECD2B.ch
 Acq On : 06 May 2024 22:15
 Operator : YP\AJ
 Sample : AR1660CCC500
 Misc :
 ALS Vial : 3 Sample Multiplier: 1

Instrument :
 ECD_Q
 ClientSampleId :
 AR1660CCC500

Integration File signal 1: autoint1.e
 Integration File signal 2: autoint2.e
 Quant Time: May 07 01:20:42 2024
 Quant Method : Z:\pestpcbsrv\HPCHEM1\ECD_Q\Method\PQ042324.M
 Quant Title : GC EXTRACTABLES
 QLast Update : Wed Apr 24 04:24:21 2024
 Response via : Initial Calibration
 Integrator: ChemStation

Volume Inj. : 2 µl
 Signal #1 Phase : ZB-MR1 Signal #2 Phase: ZB-MR2
 Signal #1 Info : 30Mx0.32mmx 0.50µ Signal #2 Info : 30M x 0.32mm x 0.25µm

Compound	RT#1	RT#2	Resp#1	Resp#2	ng/ml	ng/ml

System Monitoring Compounds						
1) SA Tetrachlo...	3.440	2.733	225.7E6	336.4E6	51.915	52.582
2) SA Decachlor...	8.647	7.495	123.9E6	300.0E6	50.358	47.686
Target Compounds						
3) L1 AR-1016-1	4.550	3.730	66581644	118.9E6	502.229	509.863
4) L1 AR-1016-2	4.569	3.746	107.4E6	172.7E6	536.495	510.231
5) L1 AR-1016-3	4.627	3.905	69475889	94442095	553.893	503.980
6) L1 AR-1016-4	4.720	3.954	53485748	78011527	535.133	494.663
7) L1 AR-1016-5	5.008	4.148	53251152	96548366	528.007	497.722
31) L7 AR-1260-1	6.114	5.140	107.9E6	194.5E6	596.147	496.623
32) L7 AR-1260-2	6.374	5.331	113.7E6	236.4E6	536.232	495.944
33) L7 AR-1260-3	6.729	5.472	78588677	215.5E6	510.995	489.535
34) L7 AR-1260-4	6.946	5.933	85620650	175.2E6	492.332	460.258
35) L7 AR-1260-5	7.258	6.179	163.0E6	409.9E6	497.873	500.452

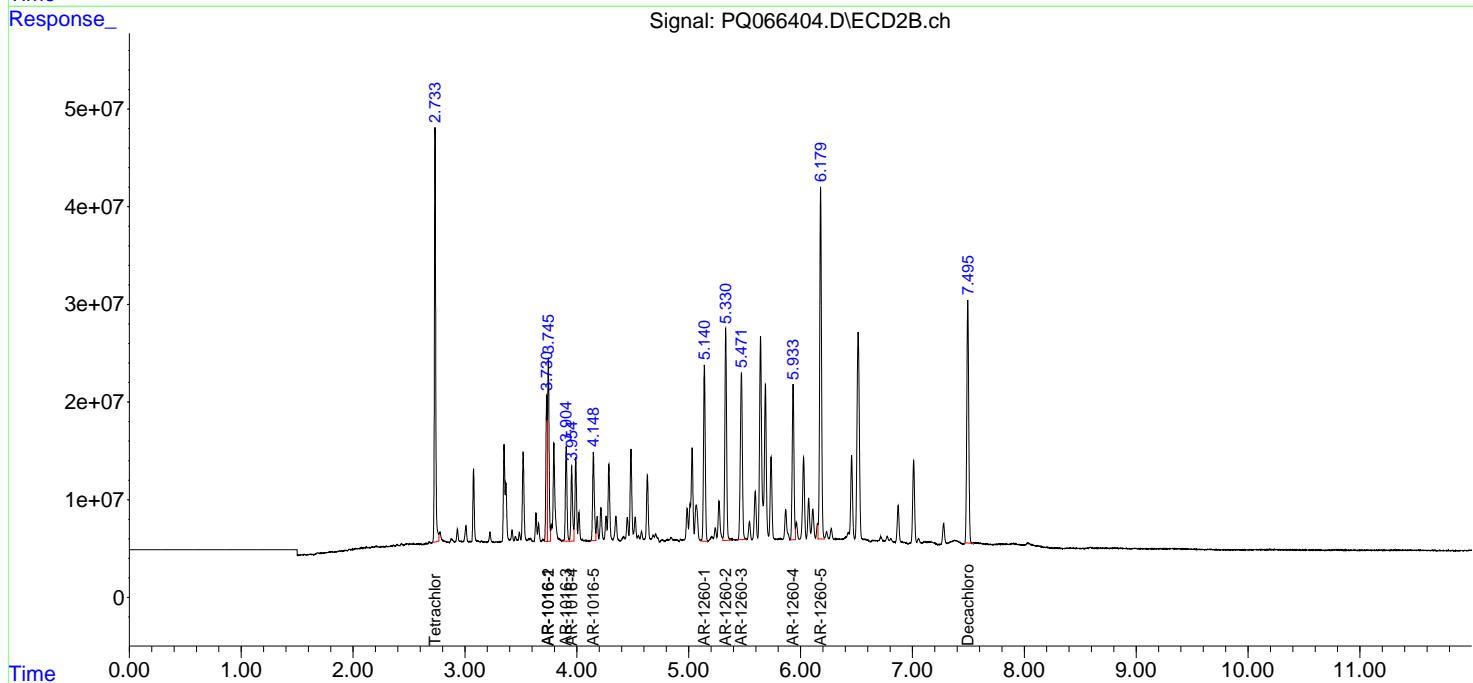
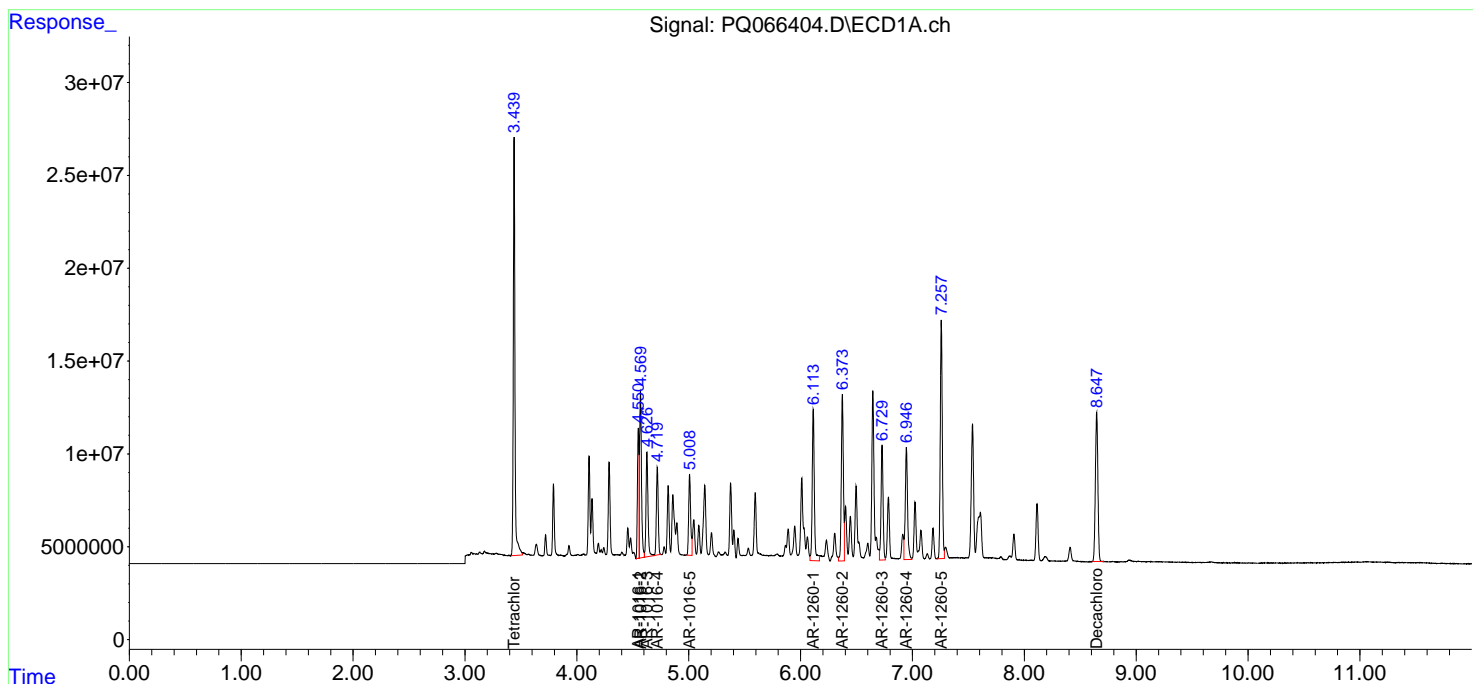
(f)=RT Delta > 1/2 Window (#)=Amounts differ by > 25% (m)=manual int.

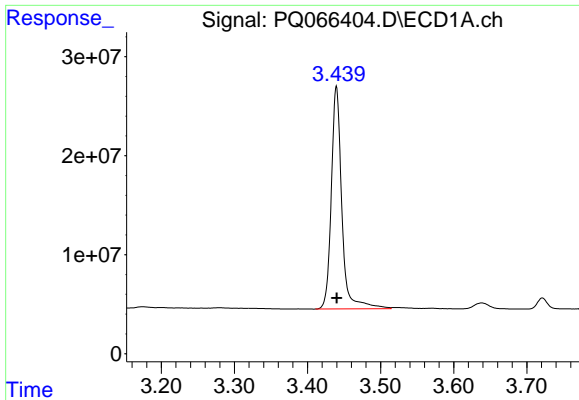
Data Path : Z:\pestpcbsrv\HPCHEM1\ECD_Q\Data\PQ050624\
 Data File : PQ066404.D
 Signal(s) : Signal #1: ECD1A.ch Signal #2: ECD2B.ch
 Acq On : 06 May 2024 22:15
 Operator : YP\AJ
 Sample : AR1660CCC500
 Misc :
 ALS Vial : 3 Sample Multiplier: 1

Instrument :
 ECD_Q
 ClientSampleId :
 AR1660CCC500

Integration File signal 1: autoint1.e
 Integration File signal 2: autoint2.e
 Quant Time: May 07 01:20:42 2024
 Quant Method : Z:\pestpcbsrv\HPCHEM1\ECD_Q\Method\PQ042324.M
 Quant Title : GC EXTRACTABLES
 QLast Update : Wed Apr 24 04:24:21 2024
 Response via : Initial Calibration
 Integrator: ChemStation

Volume Inj. : 2 µl
 Signal #1 Phase : ZB-MR1 Signal #2 Phase: ZB-MR2
 Signal #1 Info : 30Mx0.32mmx 0.50µ Signal #2 Info : 30M x 0.32mm x 0.25µm

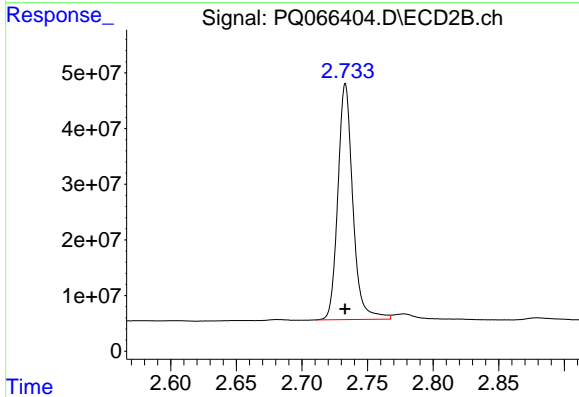




#1 Tetrachloro-m-xylene

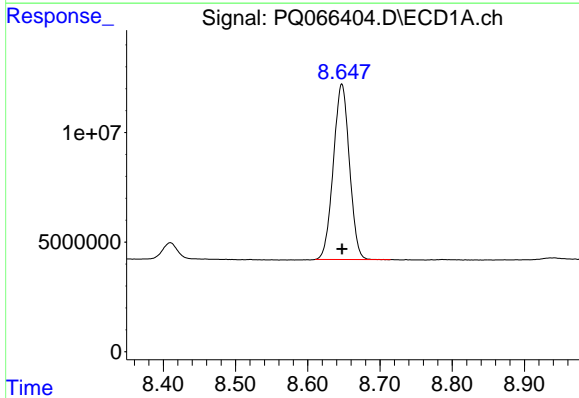
R.T.: 3.440 min
 Delta R.T.: 0.000 min
 Response: 225688736
 Conc: 51.92 ng/ml

Instrument :
 ECD_Q
 ClientSampleId :
 AR1660CCC500



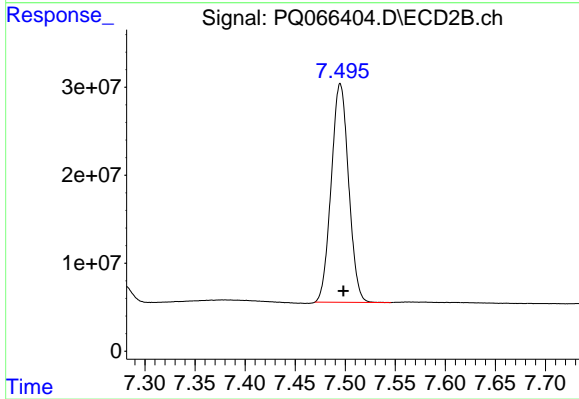
#1 Tetrachloro-m-xylene

R.T.: 2.733 min
 Delta R.T.: 0.000 min
 Response: 336385315
 Conc: 52.58 ng/ml



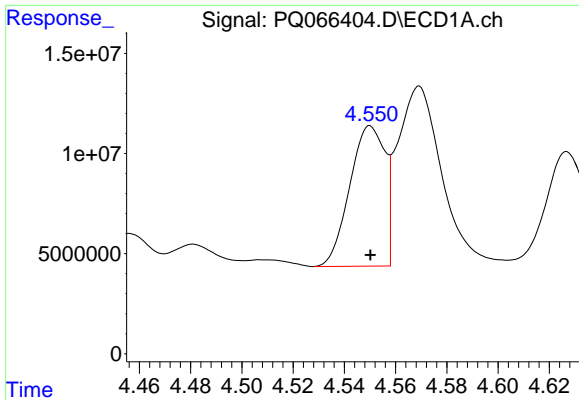
#2 Decachlorobiphenyl

R.T.: 8.647 min
 Delta R.T.: 0.000 min
 Response: 123944148
 Conc: 50.36 ng/ml



#2 Decachlorobiphenyl

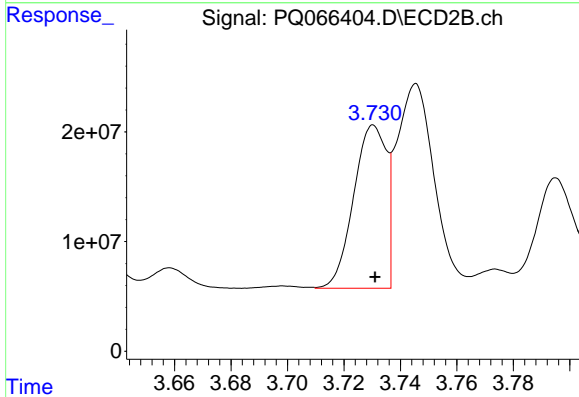
R.T.: 7.495 min
 Delta R.T.: -0.003 min
 Response: 300017830
 Conc: 47.69 ng/ml



#3 AR-1016-1

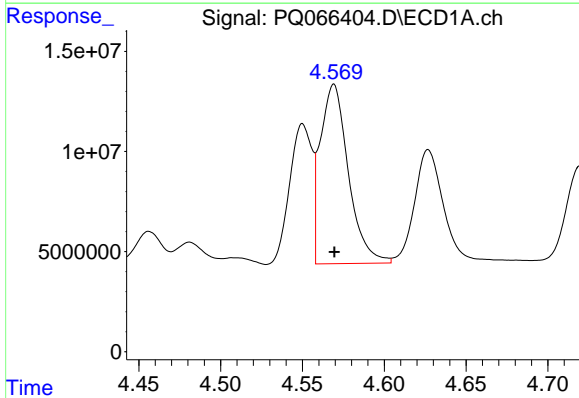
R.T.: 4.550 min
 Delta R.T.: 0.000 min
 Response: 66581644
 Conc: 502.23 ng/ml

Instrument :
 ECD_Q
 ClientSampleId :
 AR1660CCC500



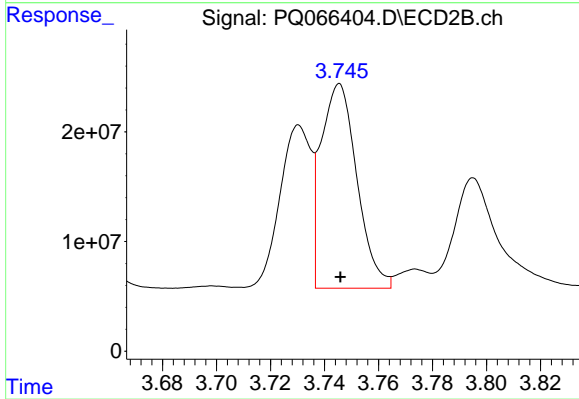
#3 AR-1016-1

R.T.: 3.730 min
 Delta R.T.: 0.000 min
 Response: 118904832
 Conc: 509.86 ng/ml



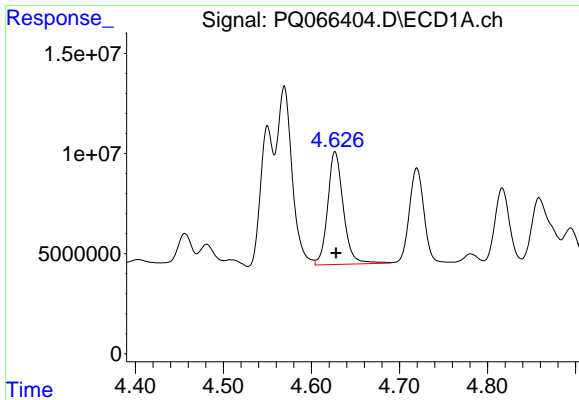
#4 AR-1016-2

R.T.: 4.569 min
 Delta R.T.: 0.000 min
 Response: 107433921
 Conc: 536.49 ng/ml



#4 AR-1016-2

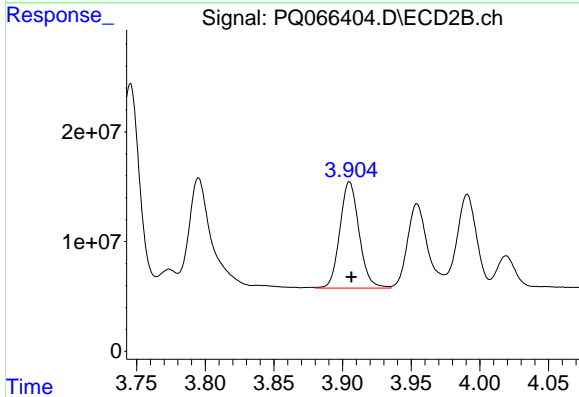
R.T.: 3.746 min
 Delta R.T.: 0.000 min
 Response: 172713913
 Conc: 510.23 ng/ml



#5 AR-1016-3

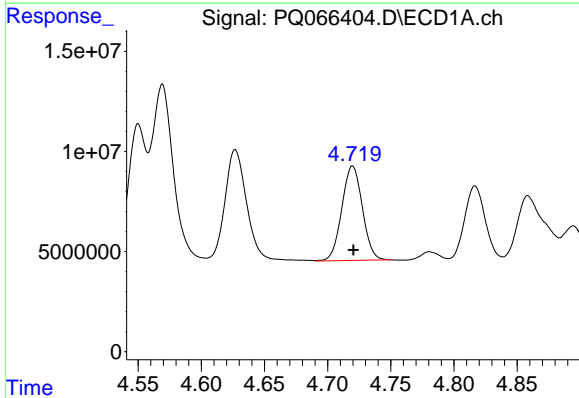
R.T.: 4.627 min
 Delta R.T.: -0.001 min
 Response: 69475889
 Conc: 553.89 ng/ml

Instrument :
 ECD_Q
 ClientSampleId :
 AR1660CCC500



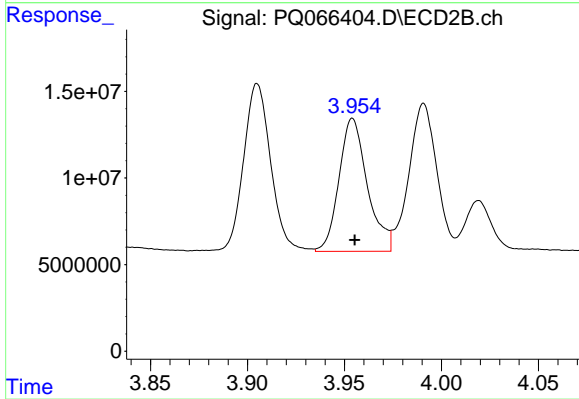
#5 AR-1016-3

R.T.: 3.905 min
 Delta R.T.: -0.001 min
 Response: 94442095
 Conc: 503.98 ng/ml



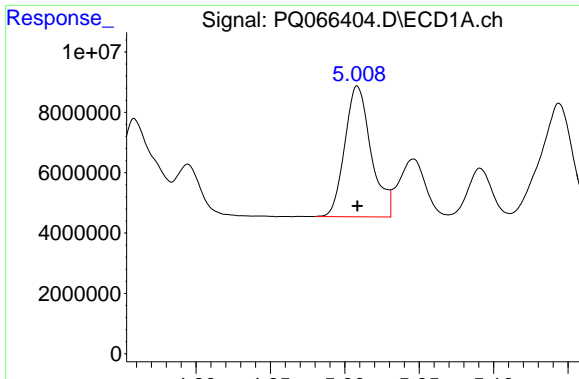
#6 AR-1016-4

R.T.: 4.720 min
 Delta R.T.: 0.000 min
 Response: 53485748
 Conc: 535.13 ng/ml



#6 AR-1016-4

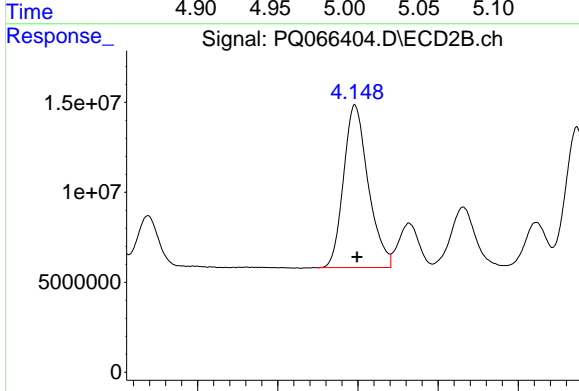
R.T.: 3.954 min
 Delta R.T.: 0.000 min
 Response: 78011527
 Conc: 494.66 ng/ml



#7 AR-1016-5

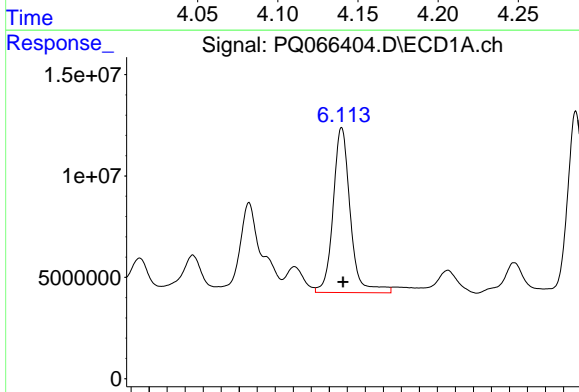
R.T.: 5.008 min
 Delta R.T.: 0.000 min
 Response: 53251152
 Conc: 528.01 ng/ml

Instrument :
 ECD_Q
 ClientSampleId :
 AR1660CCC500



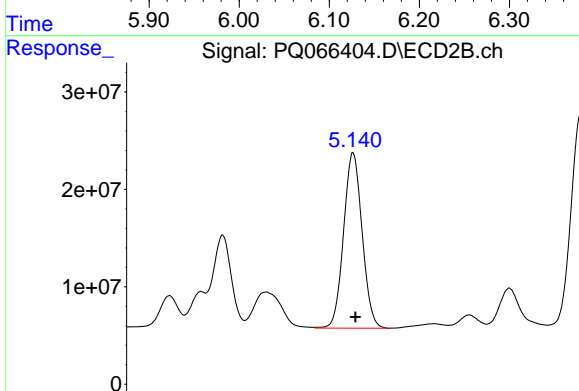
#7 AR-1016-5

R.T.: 4.148 min
 Delta R.T.: -0.001 min
 Response: 96548366
 Conc: 497.72 ng/ml



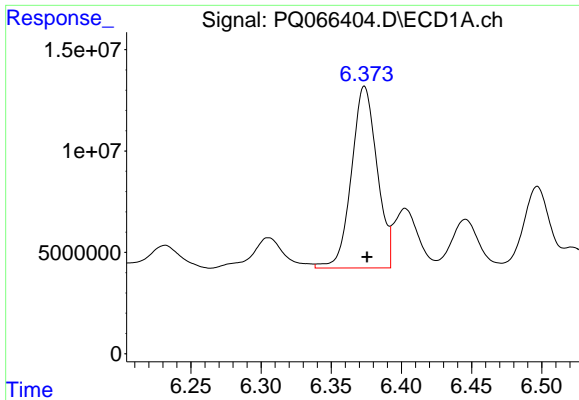
#31 AR-1260-1

R.T.: 6.114 min
 Delta R.T.: -0.001 min
 Response: 107866778
 Conc: 596.15 ng/ml



#31 AR-1260-1

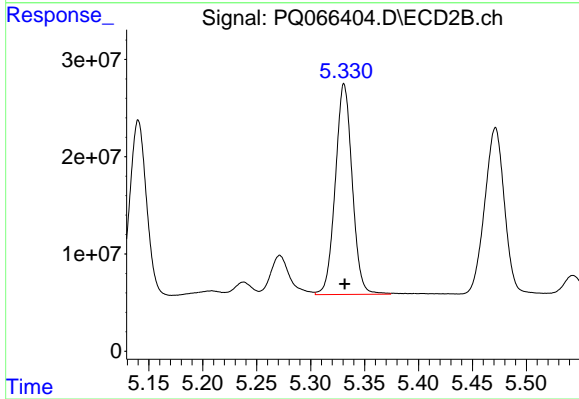
R.T.: 5.140 min
 Delta R.T.: -0.002 min
 Response: 194509012
 Conc: 496.62 ng/ml



#32 AR-1260-2

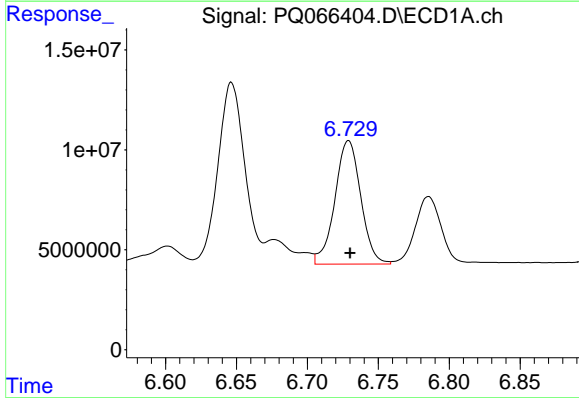
R.T.: 6.374 min
Delta R.T.: -0.002 min
Response: 113656377
Conc: 536.23 ng/ml

Instrument :
ECD_Q
ClientSampleId :
AR1660CCC500



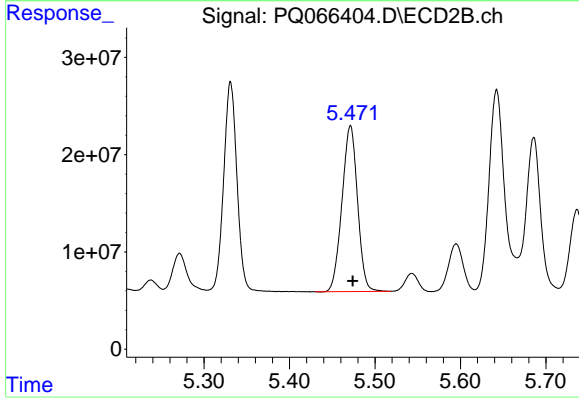
#32 AR-1260-2

R.T.: 5.331 min
Delta R.T.: 0.000 min
Response: 236370377
Conc: 495.94 ng/ml



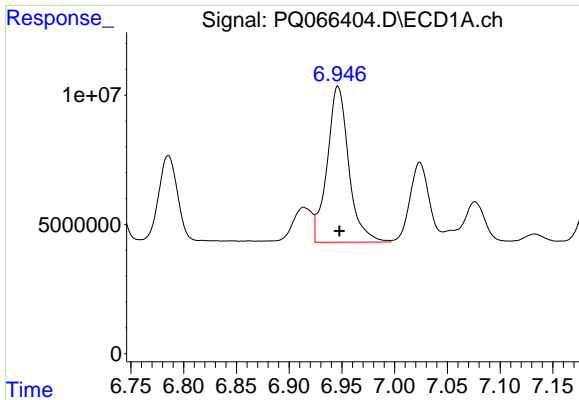
#33 AR-1260-3

R.T.: 6.729 min
Delta R.T.: 0.000 min
Response: 78588677
Conc: 510.99 ng/ml



#33 AR-1260-3

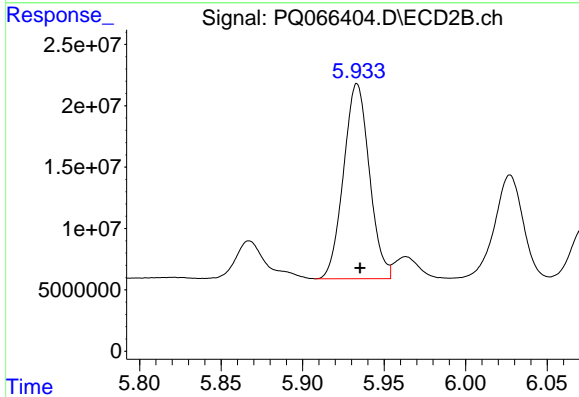
R.T.: 5.472 min
Delta R.T.: -0.002 min
Response: 215520684
Conc: 489.53 ng/ml



#34 AR-1260-4

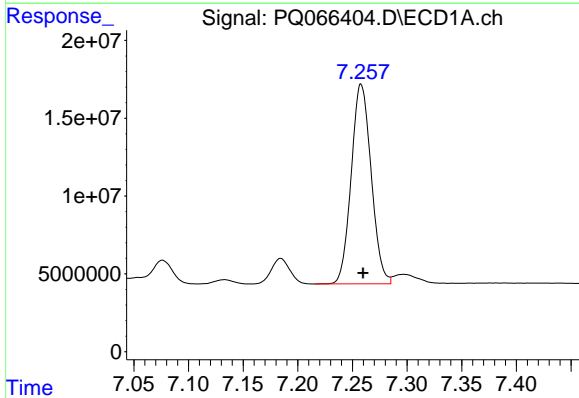
R.T.: 6.946 min
 Delta R.T.: -0.001 min
 Response: 85620650
 Conc: 492.33 ng/ml

Instrument :
 ECD_Q
 ClientSampleId :
 AR1660CCC500



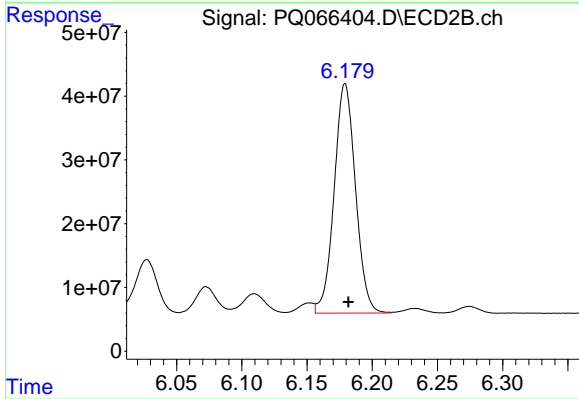
#34 AR-1260-4

R.T.: 5.933 min
 Delta R.T.: -0.002 min
 Response: 175237046
 Conc: 460.26 ng/ml



#35 AR-1260-5

R.T.: 7.258 min
 Delta R.T.: -0.002 min
 Response: 163005162
 Conc: 497.87 ng/ml



#35 AR-1260-5

R.T.: 6.179 min
 Delta R.T.: -0.003 min
 Response: 409932675
 Conc: 500.45 ng/ml