

Data Path : Z:\pestpcbsrv\HPCHEM1\ECD_Q\Data\PQ050924\
 Data File : PQ066426.D
 Signal(s) : Signal #1: ECD1A.ch Signal #2: ECD2B.ch
 Acq On : 09 May 2024 15:06
 Operator : YP\AJ
 Sample : P2403-07
 Misc : AR1254 LOD 25 PPB
 ALS Vial : 21 Sample Multiplier: 1

Instrument :
 ECD_Q
ClientSampleId :
 LOD-MDL-WATER-01-QT2-2024

Integration File signal 1: autoint1.e
 Integration File signal 2: autoint2.e
 Quant Time: May 10 01:09:31 2024
 Quant Method : Z:\pestpcbsrv\HPCHEM1\ECD_Q\Method\PQ042324.M
 Quant Title : GC EXTRACTABLES
 QLast Update : Wed Apr 24 04:24:21 2024
 Response via : Initial Calibration
 Integrator: ChemStation

Volume Inj. : 2 µl
 Signal #1 Phase : ZB-MR1 Signal #2 Phase: ZB-MR2
 Signal #1 Info : 30Mx0.32mmx 0.50µ Signal #2 Info : 30M x 0.32mm x 0.25µm

Compound	RT#1	RT#2	Resp#1	Resp#2	ng/ml	ng/ml
System Monitoring Compounds						
1) SA Tetrachlo...	3.439	2.733	83570487	121.4E6	19.224	18.972
2) SA Decachlor...	8.648	7.497	50472099	134.6E6	20.506	21.397
Target Compounds						
3) L1 AR-1016-1	4.578f	3.732	2511565	404673	18.945	1.735 #
4) L1 AR-1016-2	4.578	3.745	2511565	94286	12.542	0.279 #
5) L1 AR-1016-3	4.629	3.909	1037861	129633	8.274	0.692 #
6) L1 AR-1016-4	4.720	3.955	252303	4290017	2.524	27.203 #
7) L1 AR-1016-5	5.008	4.149	1245456	2594865	12.349	13.377
8) L2 AR-1221-1	0.000	2.939	0	68061	N.D.	0.808 #
9) L2 AR-1221-2	3.720	3.000	1038384	1393063	26.870	23.031
10) L2 AR-1221-3	3.811	3.080	71093	415882	0.581	2.221 #
11) L3 AR-1232-1	3.811	3.080	71093	415882	0.704	2.702 #
12) L3 AR-1232-2	4.275	3.745	699179	94286	12.683	0.585 #
13) L3 AR-1232-3	4.578	3.909	2511565	129633	26.052	1.470 #
14) L3 AR-1232-4	4.720	3.990	252303	1564175	5.330	20.762 #
15) L3 AR-1232-5	4.817	4.149	2431549	2594865	73.029	30.774 #
16) L4 AR-1242-1	4.578f	3.732	2511565	404673	22.673	2.040 #
17) L4 AR-1242-2	4.578	3.745	2511565	94286	14.865	0.333 #
18) L4 AR-1242-3	4.629	3.909	1037861	129633	9.806	0.826 #
19) L4 AR-1242-4	4.720	3.990	252303	1564175	3.026	10.663 #
20) L4 AR-1242-5	5.445	4.484	1476292	10478855	16.710	54.503 #
21) L5 AR-1248-1	4.578f	3.732	2511565	404673	31.076	2.719 #
22) L5 AR-1248-2	4.817	3.955	2431549	4290017	21.087	19.386
23) L5 AR-1248-3	5.008	3.990	1245456	1564175	9.067	7.396
24) L5 AR-1248-4	5.406	4.149	1281213	2594865	8.890	10.075
25) L5 AR-1248-5	5.445	4.521	1476292	1398338	10.099	5.418 #
26) L6 AR-1254-1	5.376	4.484	4013150	10478855	26.713	26.642
27) L6 AR-1254-2	5.594	4.631	7945200	9557896	33.696	28.042
28) L6 AR-1254-3	5.948	5.012	8043060	14835456	32.729	27.469
29) L6 AR-1254-4	6.235	5.239	5724994	10183266	32.872	27.408
30) L6 AR-1254-5	6.650	5.643	5139270	12476312	27.981	25.607
31) L7 AR-1260-1	6.116	5.142	3938542	6993278	21.767	17.855
32) L7 AR-1260-2	6.374	5.332	3267097	6845358	15.414	14.363
33) L7 AR-1260-3	6.760f	5.467	121301	6045928	0.789	13.733 #
34) L7 AR-1260-4	6.945	5.936	579763	930850	3.334	2.445 #
35) L7 AR-1260-5	7.262	6.180	629370	1684674	1.922	2.057
36) L8 AR-1262-1	6.650	5.643	5139270	12476312	34.990	44.680 #
37) L8 AR-1262-2	7.262	5.936	629370	930850	1.717	1.958
38) L8 AR-1262-3	7.542	6.459	356185	2115834	1.480	5.602 #
39) L8 AR-1262-4	7.591	6.514	202458	1643772	1.091	2.355 #
40) L8 AR-1262-5	8.115	7.019	750802	102576	6.070	0.312 #
41) L9 AR-1268-1	7.542	6.459	356185	2115834	0.850	1.888 #

Data Path : Z:\pestpcbsrv\HPCHEM1\ECD_Q\Data\PQ050924\
 Data File : PQ066426.D
 Signal(s) : Signal #1: ECD1A.ch Signal #2: ECD2B.ch
 Acq On : 09 May 2024 15:06
 Operator : YP\AJ
 Sample : P2403-07
 Misc : AR1254 LOD 25 PPB
 ALS Vial : 21 Sample Multiplier: 1

Instrument :
 ECD_Q
ClientSampleId :
 LOD-MDL-WATER-01-QT2-2024

Integration File signal 1: autoint1.e
 Integration File signal 2: autoint2.e
 Quant Time: May 10 01:09:31 2024
 Quant Method : Z:\pestpcbsrv\HPCHEM1\ECD_Q\Method\PQ042324.M
 Quant Title : GC EXTRACTABLES
 QLast Update : Wed Apr 24 04:24:21 2024
 Response via : Initial Calibration
 Integrator: ChemStation

Volume Inj. : 2 µl
 Signal #1 Phase : ZB-MR1 Signal #2 Phase: ZB-MR2
 Signal #1 Info : 30Mx0.32mmx 0.50µ Signal #2 Info : 30M x 0.32mm x 0.25µm

	Compound	RT#1	RT#2	Resp#1	Resp#2	ng/ml	ng/ml
42)	L9 AR-1268-2	7.591	6.514	202458	1643772	0.521	1.611 #
43)	L9 AR-1268-3	7.826f	6.726	204989	3479868	0.638	3.912 #
44)	L9 AR-1268-4	8.115	7.019	750802	102576	5.299	0.276 #
45)	L9 AR-1268-5	8.415	7.280	583164	-19024	0.615	N.D. #

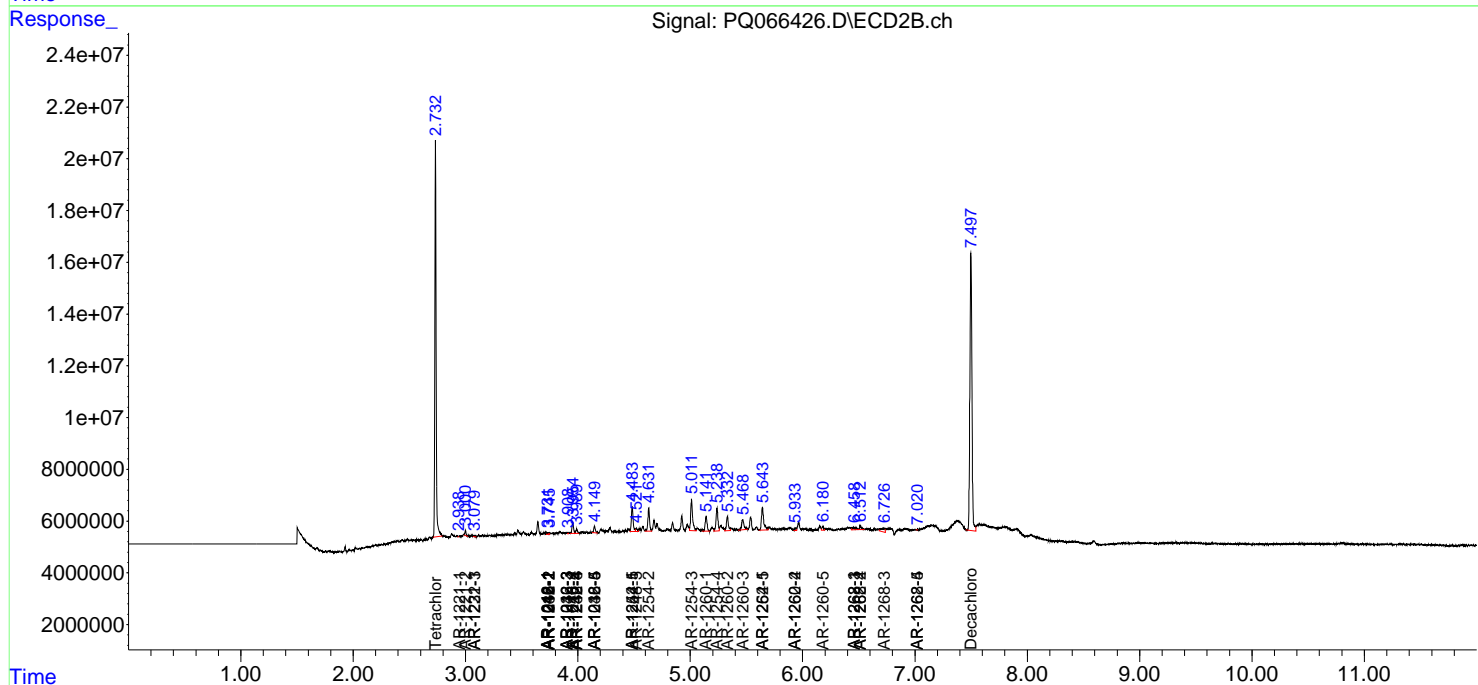
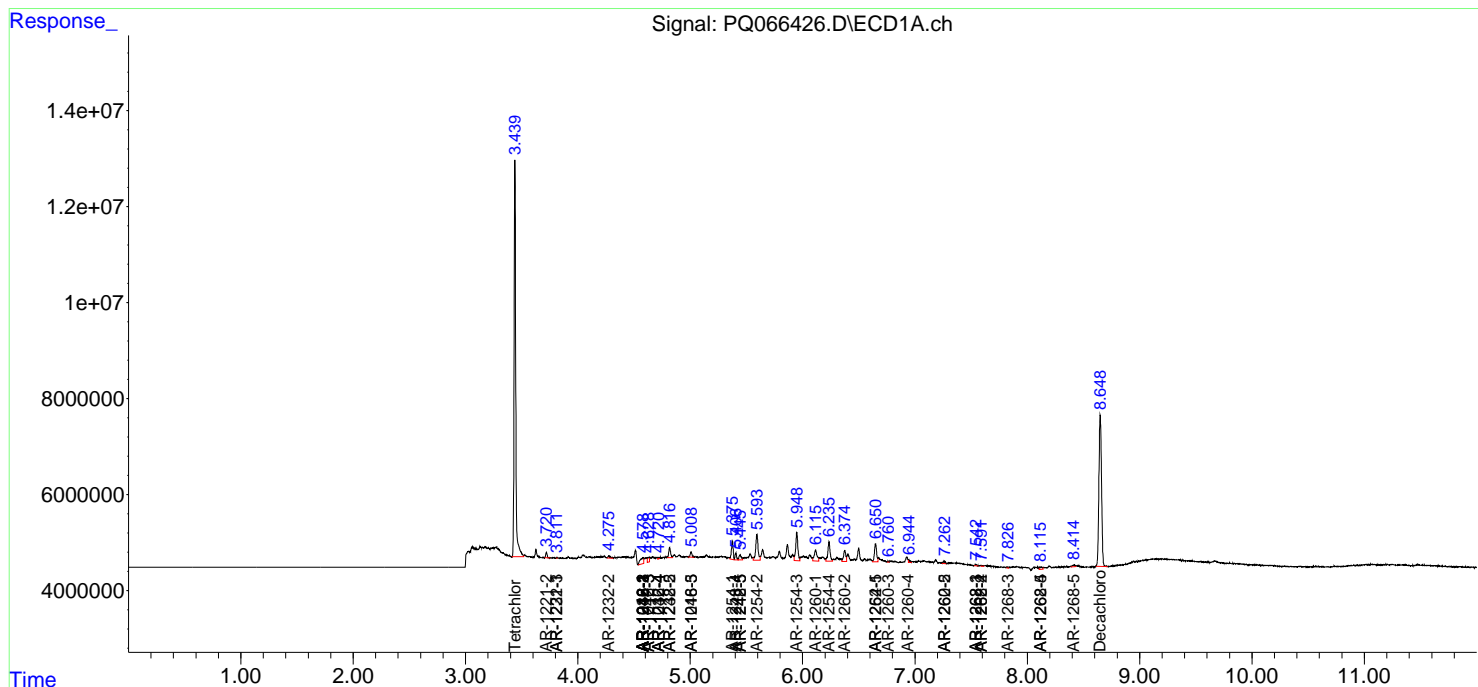
(f)=RT Delta > 1/2 Window (#)=Amounts differ by > 25% (m)=manual int.

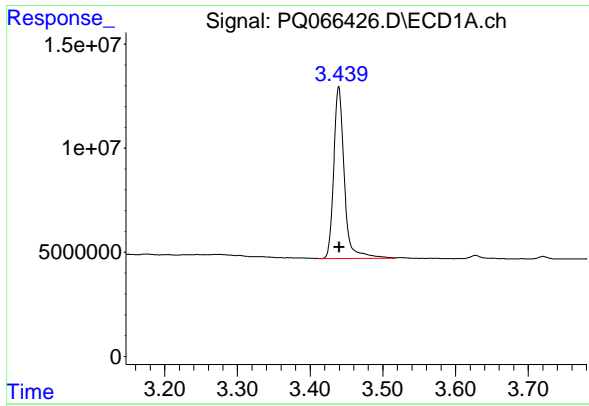
Data Path : Z:\pestpcbsrv\HPCHEM1\ECD_Q\Data\PQ050924\
 Data File : PQ066426.D
 Signal(s) : Signal #1: ECD1A.ch Signal #2: ECD2B.ch
 Acq On : 09 May 2024 15:06
 Operator : YP\AJ
 Sample : P2403-07
 Misc : AR1254 LOD 25 PPB
 ALS Vial : 21 Sample Multiplier: 1

Instrument :
 ECD_Q
ClientSampleId :
 LOD-MDL-WATER-01-QT2-2024

Integration File signal 1: autoint1.e
 Integration File signal 2: autoint2.e
 Quant Time: May 10 01:09:31 2024
 Quant Method : Z:\pestpcbsrv\HPCHEM1\ECD_Q\Method\PQ042324.M
 Quant Title : GC EXTRACTABLES
 QLast Update : Wed Apr 24 04:24:21 2024
 Response via : Initial Calibration
 Integrator: ChemStation

Volume Inj. : 2 µl
 Signal #1 Phase : ZB-MR1 Signal #2 Phase: ZB-MR2
 Signal #1 Info : 30Mx0.32mmx 0.50µ Signal #2 Info : 30M x 0.32mm x 0.25µm

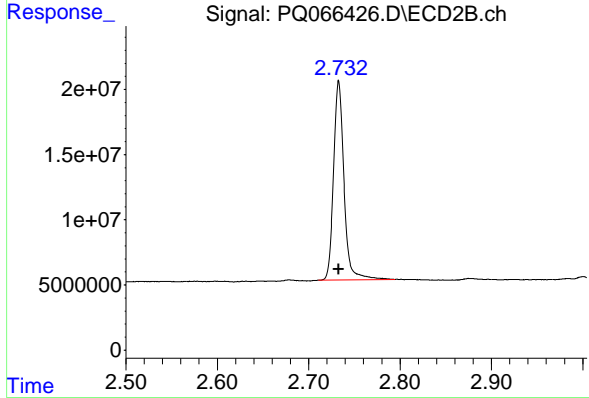




#1 Tetrachloro-m-xylene

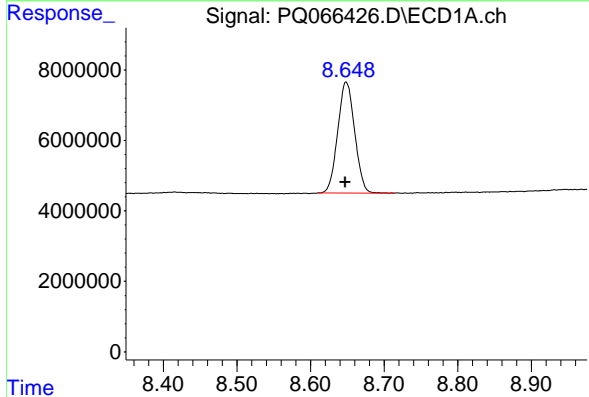
R.T.: 3.439 min
 Delta R.T.: 0.000 min
 Response: 83570487
 Conc: 19.22 ng/ml

Instrument : ECD_Q
 ClientSampleId : LOD-MDL-WATER-01-QT2-2024



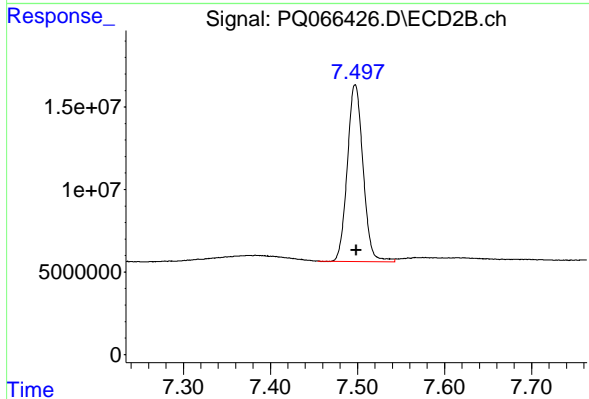
#1 Tetrachloro-m-xylene

R.T.: 2.733 min
 Delta R.T.: 0.000 min
 Response: 121372047
 Conc: 18.97 ng/ml



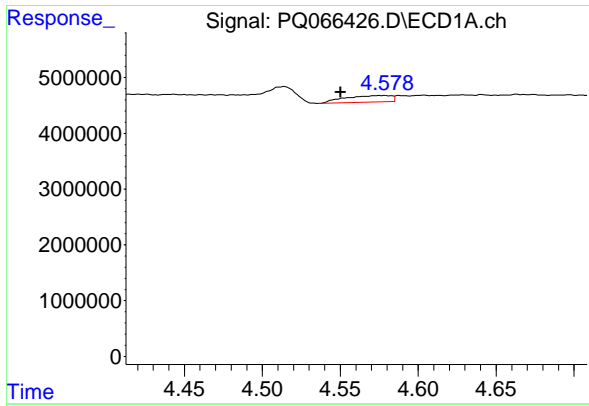
#2 Decachlorobiphenyl

R.T.: 8.648 min
 Delta R.T.: 0.000 min
 Response: 50472099
 Conc: 20.51 ng/ml



#2 Decachlorobiphenyl

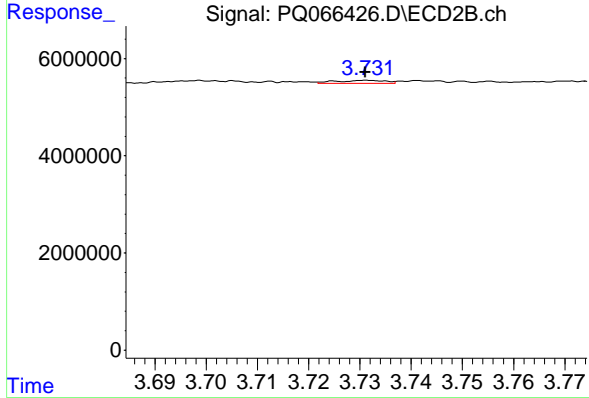
R.T.: 7.497 min
 Delta R.T.: 0.000 min
 Response: 134619034
 Conc: 21.40 ng/ml



#3 AR-1016-1

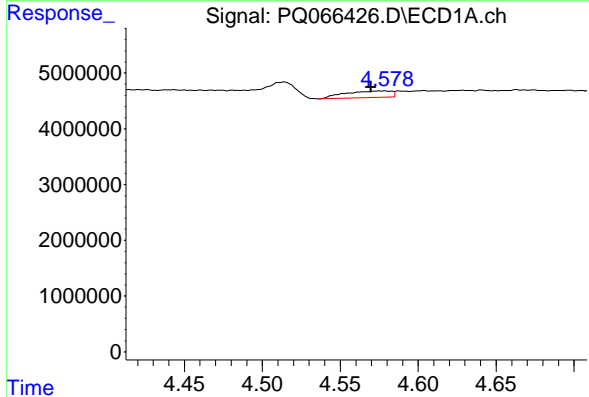
R.T.: 4.578 min
 Delta R.T.: 0.028 min
 Response: 2511565
 Conc: 18.94 ng/ml

Instrument :
 ECD_Q
 ClientSampleId :
 LOD-MDL-WATER-01-QT2-2024



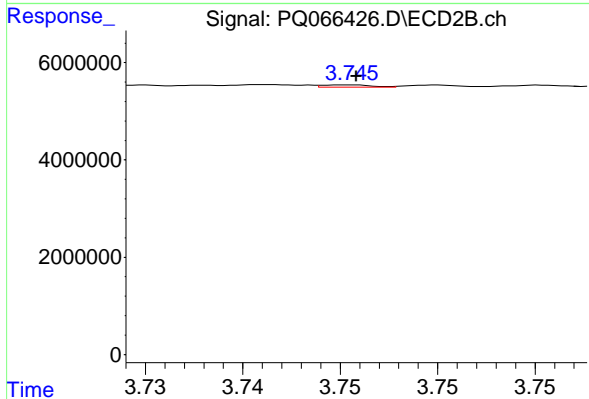
#3 AR-1016-1

R.T.: 3.732 min
 Delta R.T.: 0.000 min
 Response: 404673
 Conc: 1.74 ng/ml



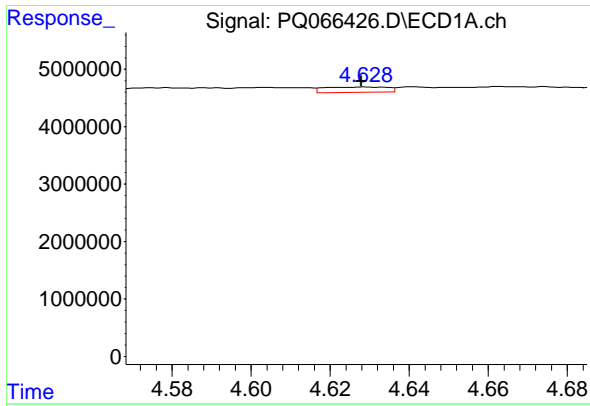
#4 AR-1016-2

R.T.: 4.578 min
 Delta R.T.: 0.009 min
 Response: 2511565
 Conc: 12.54 ng/ml



#4 AR-1016-2

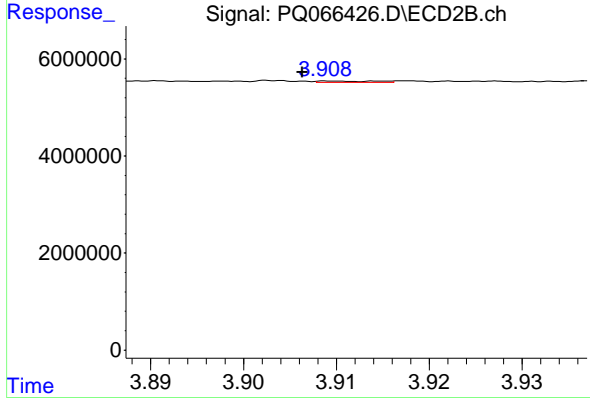
R.T.: 3.745 min
 Delta R.T.: 0.000 min
 Response: 94286
 Conc: 0.28 ng/ml



#5 AR-1016-3

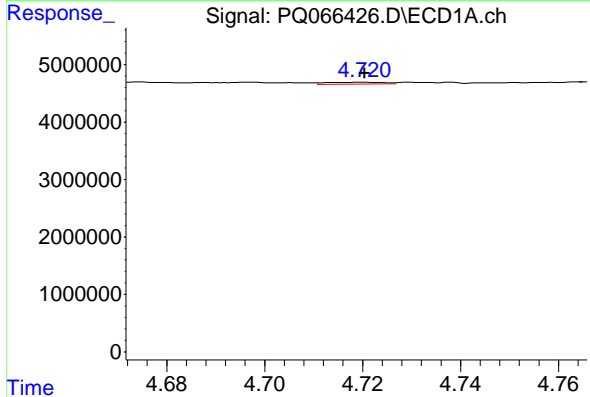
R.T.: 4.629 min
 Delta R.T.: 0.000 min
 Response: 1037861
 Conc: 8.27 ng/ml

Instrument : ECD_Q
 ClientSampleId : LOD-MDL-WATER-01-QT2-2024



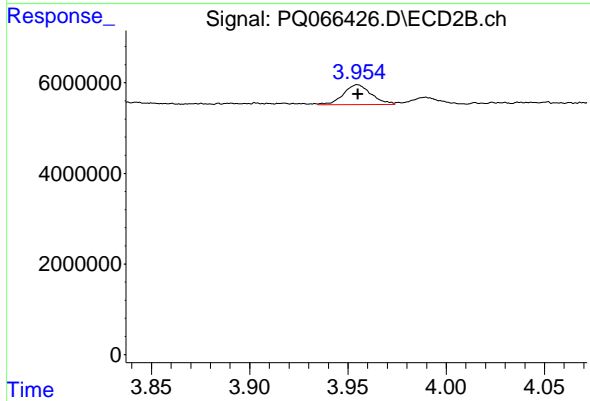
#5 AR-1016-3

R.T.: 3.909 min
 Delta R.T.: 0.003 min
 Response: 129633
 Conc: 0.69 ng/ml



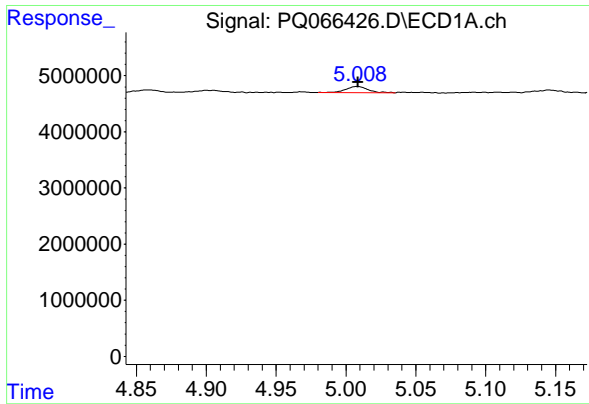
#6 AR-1016-4

R.T.: 4.720 min
 Delta R.T.: 0.000 min
 Response: 252303
 Conc: 2.52 ng/ml



#6 AR-1016-4

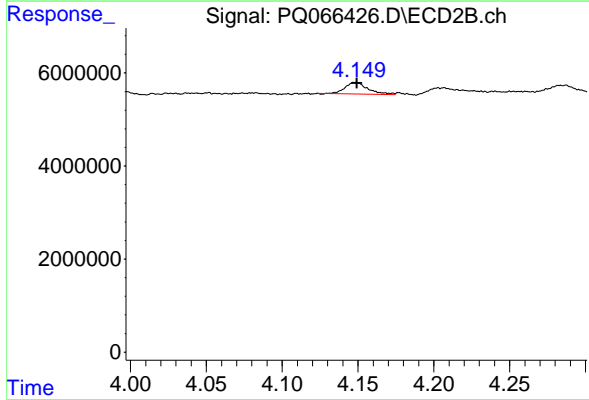
R.T.: 3.955 min
 Delta R.T.: 0.000 min
 Response: 4290017
 Conc: 27.20 ng/ml



#7 AR-1016-5

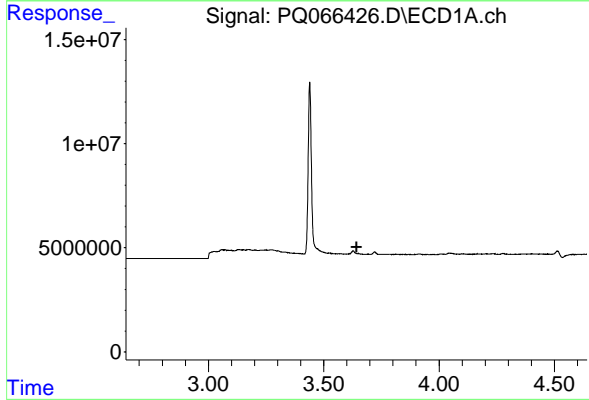
R.T.: 5.008 min
 Delta R.T.: 0.000 min
 Response: 1245456
 Conc: 12.35 ng/ml

Instrument : ECD_Q
 ClientSampleId : LOD-MDL-WATER-01-QT2-2024



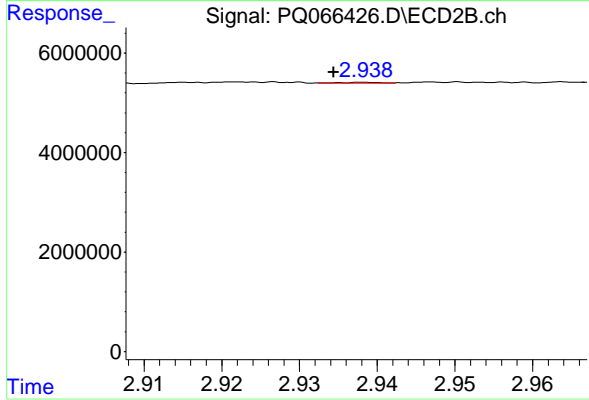
#7 AR-1016-5

R.T.: 4.149 min
 Delta R.T.: 0.000 min
 Response: 2594865
 Conc: 13.38 ng/ml



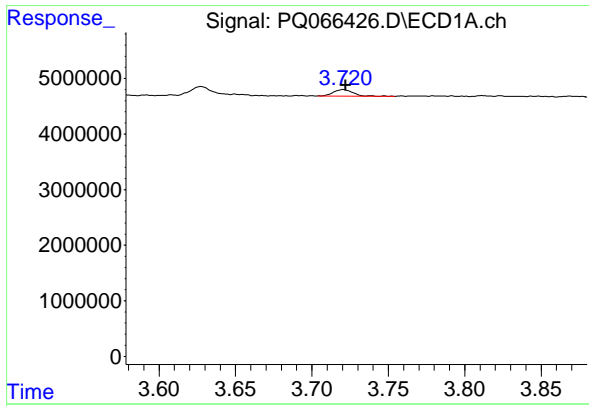
#8 AR-1221-1

R.T.: 0.000 min
 Exp R.T. : 3.642 min
 Response: 0
 Conc: N.D.



#8 AR-1221-1

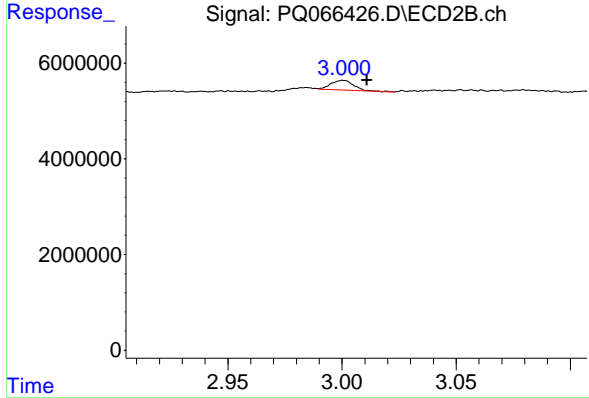
R.T.: 2.939 min
 Delta R.T.: 0.004 min
 Response: 68061
 Conc: 0.81 ng/ml



#9 AR-1221-2

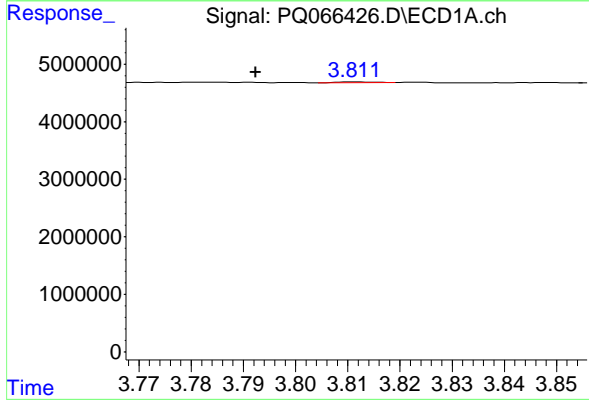
R.T.: 3.720 min
 Delta R.T.: -0.002 min
 Response: 1038384
 Conc: 26.87 ng/ml

Instrument : ECD_Q
 ClientSampleId : LOD-MDL-WATER-01-QT2-2024



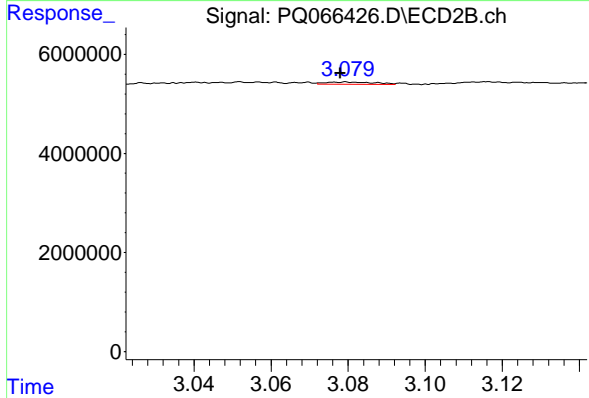
#9 AR-1221-2

R.T.: 3.000 min
 Delta R.T.: -0.010 min
 Response: 1393063
 Conc: 23.03 ng/ml



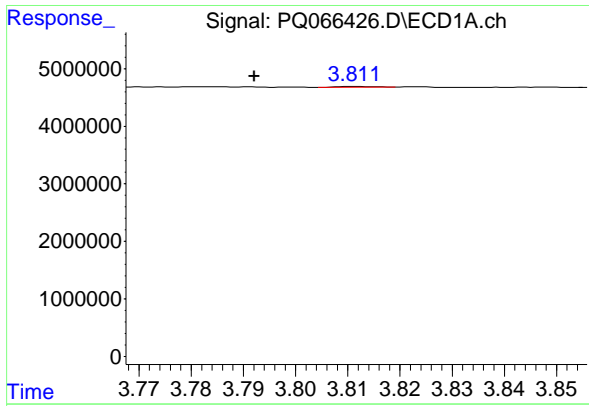
#10 AR-1221-3

R.T.: 3.811 min
 Delta R.T.: 0.019 min
 Response: 71093
 Conc: 0.58 ng/ml



#10 AR-1221-3

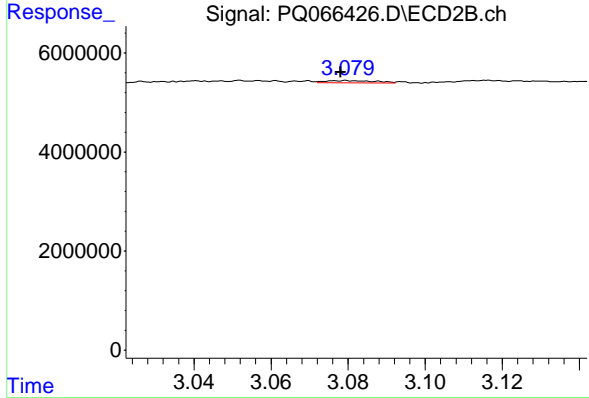
R.T.: 3.080 min
 Delta R.T.: 0.002 min
 Response: 415882
 Conc: 2.22 ng/ml



#11 AR-1232-1

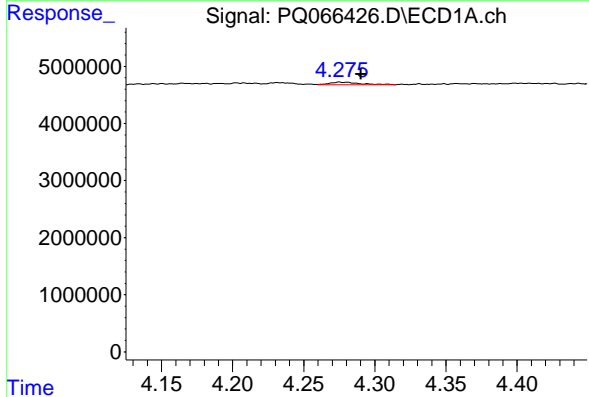
R.T.: 3.811 min
 Delta R.T.: 0.019 min
 Response: 71093
 Conc: 0.70 ng/ml

Instrument : ECD_Q
 ClientSampleId : LOD-MDL-WATER-01-QT2-2024



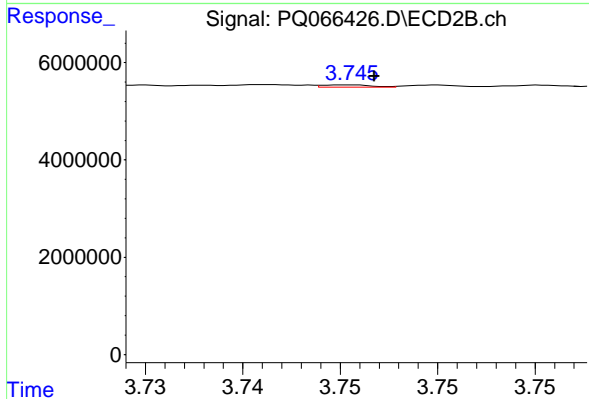
#11 AR-1232-1

R.T.: 3.080 min
 Delta R.T.: 0.002 min
 Response: 415882
 Conc: 2.70 ng/ml



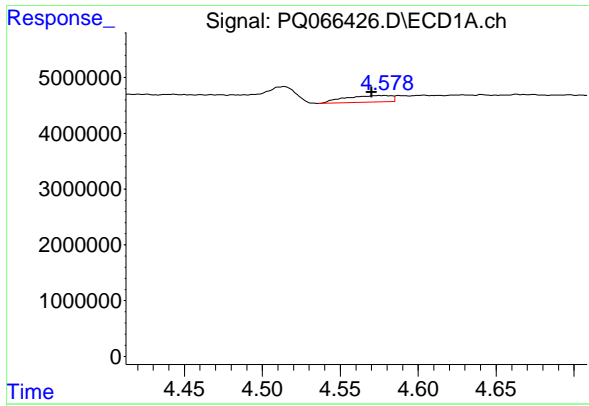
#12 AR-1232-2

R.T.: 4.275 min
 Delta R.T.: -0.015 min
 Response: 699179
 Conc: 12.68 ng/ml



#12 AR-1232-2

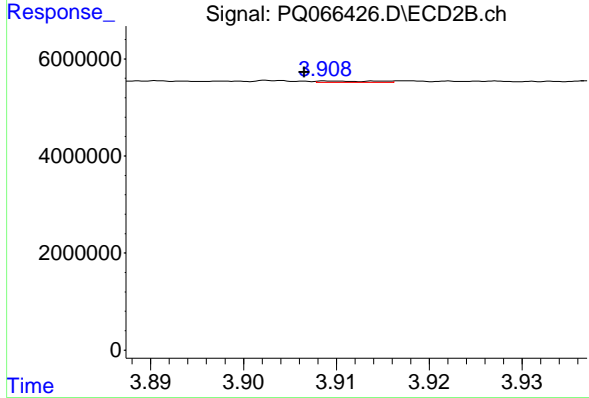
R.T.: 3.745 min
 Delta R.T.: -0.002 min
 Response: 94286
 Conc: 0.59 ng/ml



#13 AR-1232-3

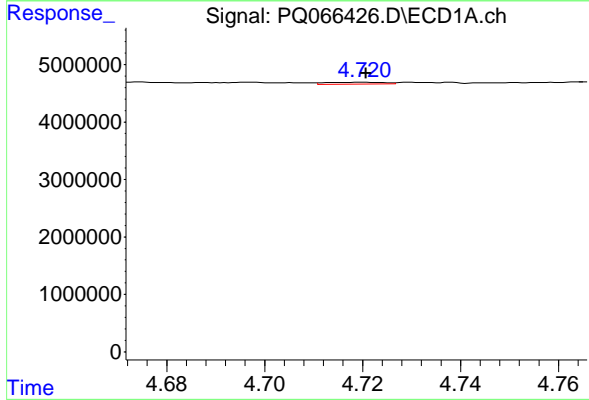
R.T.: 4.578 min
 Delta R.T.: 0.008 min
 Response: 2511565
 Conc: 26.05 ng/ml

Instrument :
 ECD_Q
 ClientSampleId :
 LOD-MDL-WATER-01-QT2-2024



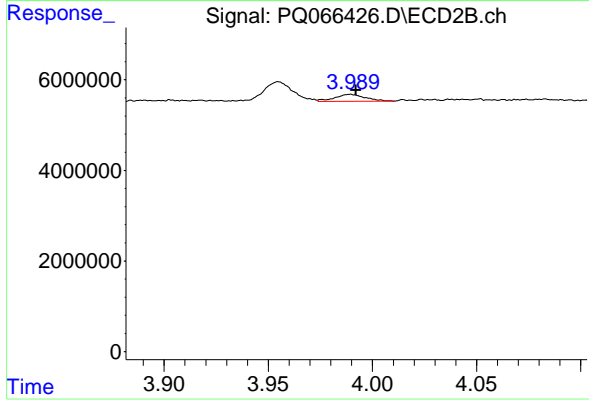
#13 AR-1232-3

R.T.: 3.909 min
 Delta R.T.: 0.003 min
 Response: 129633
 Conc: 1.47 ng/ml



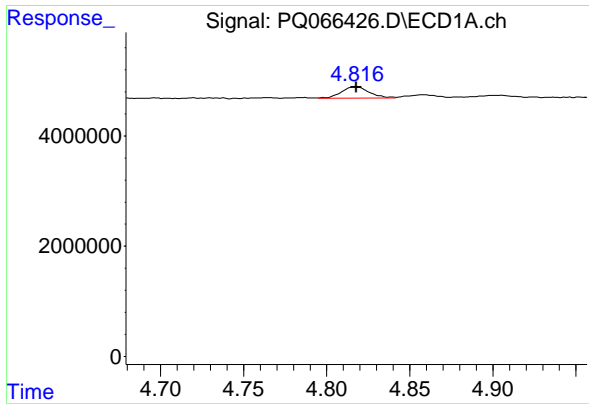
#14 AR-1232-4

R.T.: 4.720 min
 Delta R.T.: 0.000 min
 Response: 252303
 Conc: 5.33 ng/ml



#14 AR-1232-4

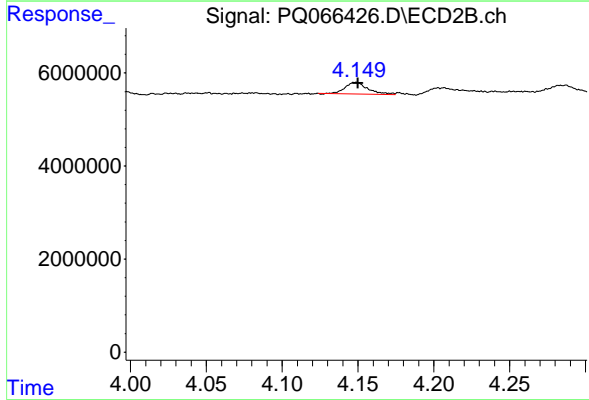
R.T.: 3.990 min
 Delta R.T.: -0.003 min
 Response: 1564175
 Conc: 20.76 ng/ml



#15 AR-1232-5

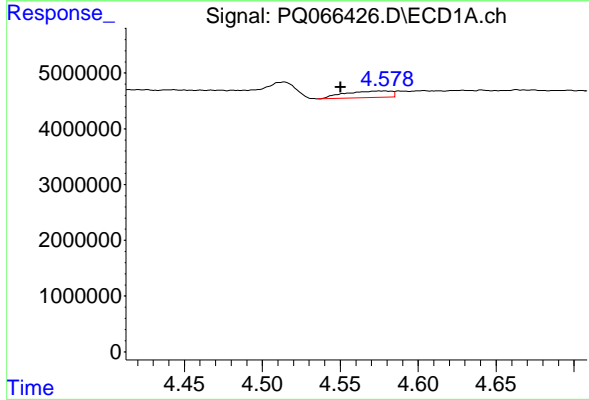
R.T.: 4.817 min
 Delta R.T.: 0.000 min
 Response: 2431549
 Conc: 73.03 ng/ml

Instrument :
 ECD_Q
 ClientSampleId :
 LOD-MDL-WATER-01-QT2-2024



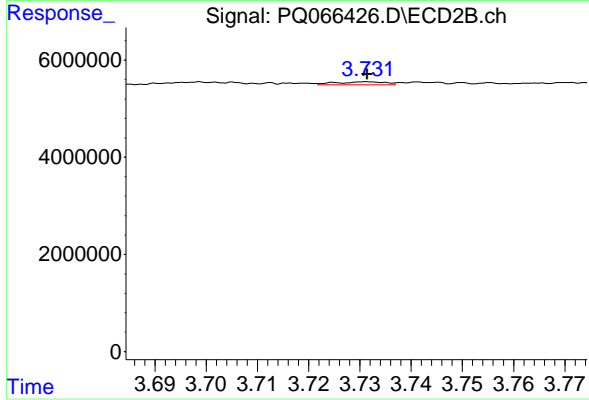
#15 AR-1232-5

R.T.: 4.149 min
 Delta R.T.: -0.001 min
 Response: 2594865
 Conc: 30.77 ng/ml



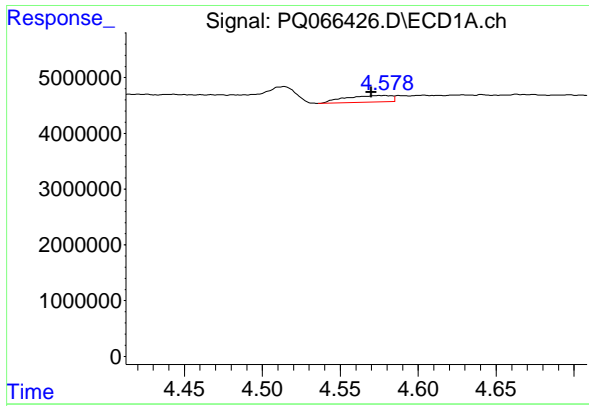
#16 AR-1242-1

R.T.: 4.578 min
 Delta R.T.: 0.028 min
 Response: 2511565
 Conc: 22.67 ng/ml



#16 AR-1242-1

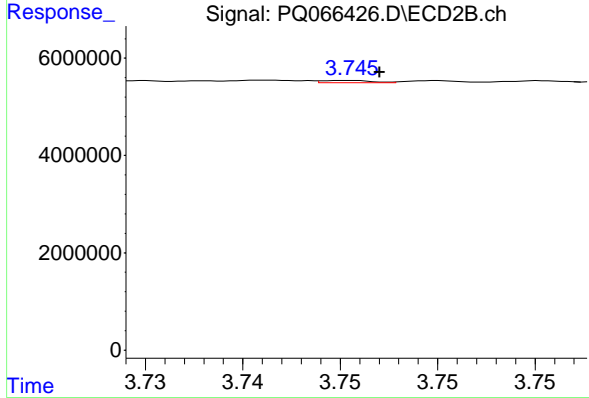
R.T.: 3.732 min
 Delta R.T.: 0.000 min
 Response: 404673
 Conc: 2.04 ng/ml



#17 AR-1242-2

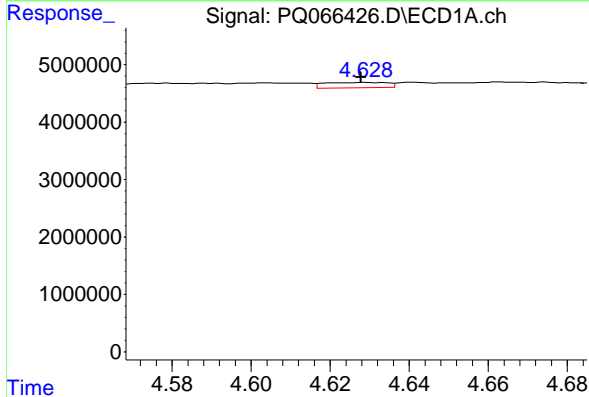
R.T.: 4.578 min
 Delta R.T.: 0.008 min
 Response: 2511565
 Conc: 14.87 ng/ml

Instrument : ECD_Q
 ClientSampleId : LOD-MDL-WATER-01-QT2-2024



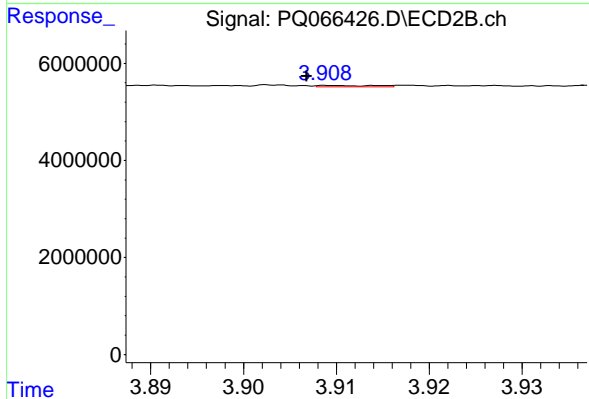
#17 AR-1242-2

R.T.: 3.745 min
 Delta R.T.: -0.002 min
 Response: 94286
 Conc: 0.33 ng/ml



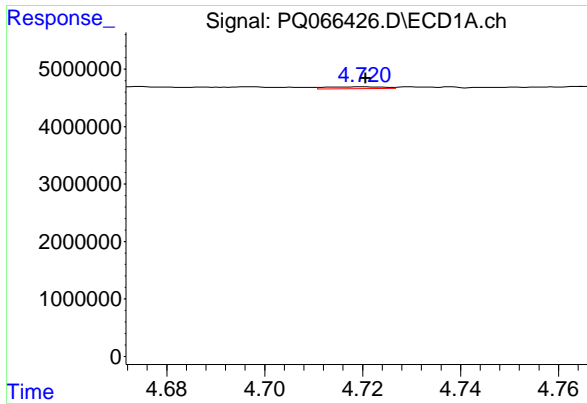
#18 AR-1242-3

R.T.: 4.629 min
 Delta R.T.: 0.001 min
 Response: 1037861
 Conc: 9.81 ng/ml



#18 AR-1242-3

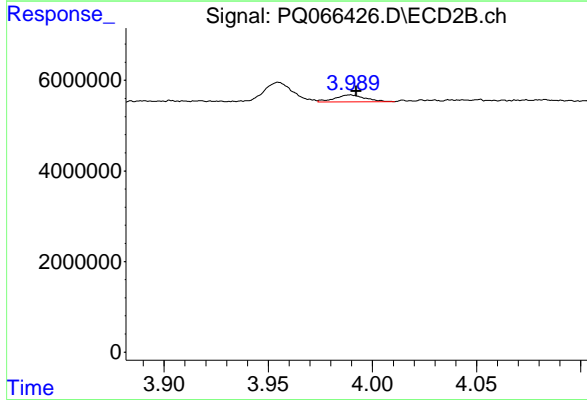
R.T.: 3.909 min
 Delta R.T.: 0.003 min
 Response: 129633
 Conc: 0.83 ng/ml



#19 AR-1242-4

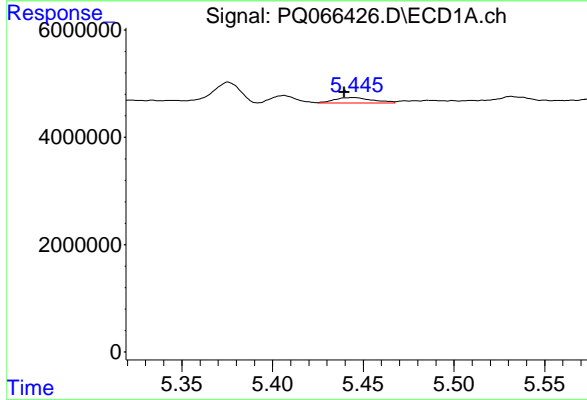
R.T.: 4.720 min
 Delta R.T.: 0.000 min
 Response: 252303
 Conc: 3.03 ng/ml

Instrument : ECD_Q
 ClientSampleId : LOD-MDL-WATER-01-QT2-2024



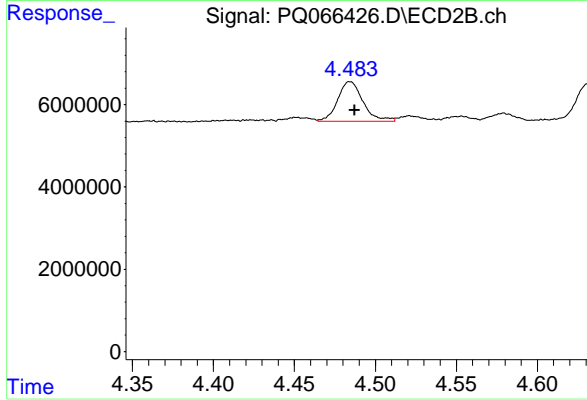
#19 AR-1242-4

R.T.: 3.990 min
 Delta R.T.: -0.003 min
 Response: 1564175
 Conc: 10.66 ng/ml



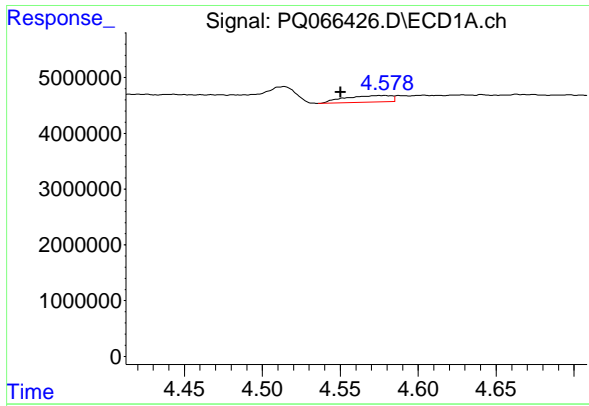
#20 AR-1242-5

R.T.: 5.445 min
 Delta R.T.: 0.005 min
 Response: 1476292
 Conc: 16.71 ng/ml



#20 AR-1242-5

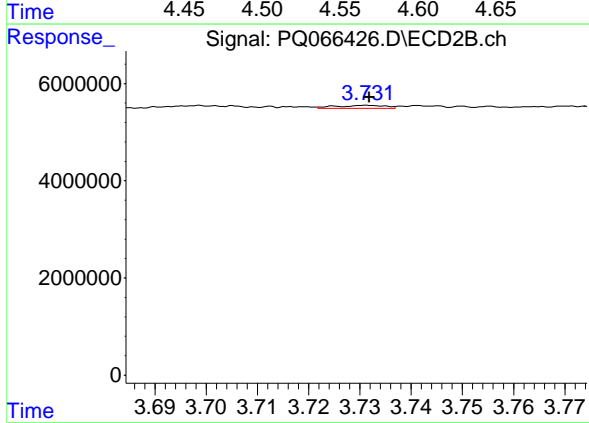
R.T.: 4.484 min
 Delta R.T.: -0.003 min
 Response: 10478855
 Conc: 54.50 ng/ml



#21 AR-1248-1

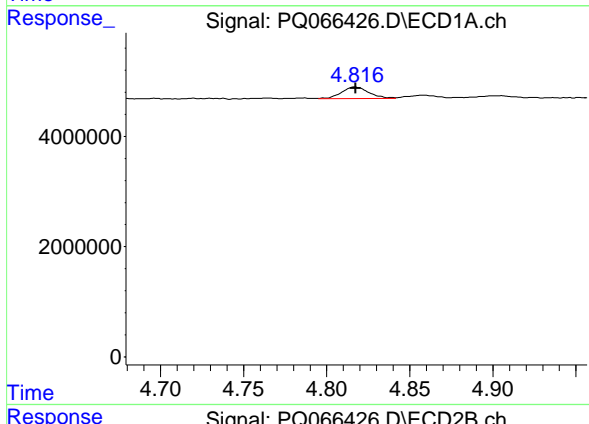
R.T.: 4.578 min
 Delta R.T.: 0.028 min
 Response: 2511565
 Conc: 31.08 ng/ml

Instrument : ECD_Q
 ClientSampleId : LOD-MDL-WATER-01-QT2-2024



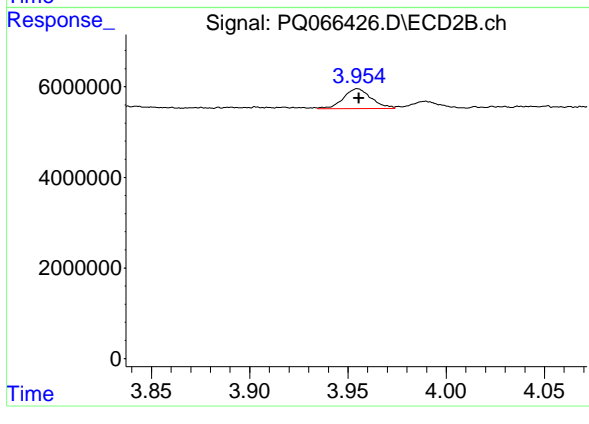
#21 AR-1248-1

R.T.: 3.732 min
 Delta R.T.: 0.000 min
 Response: 404673
 Conc: 2.72 ng/ml



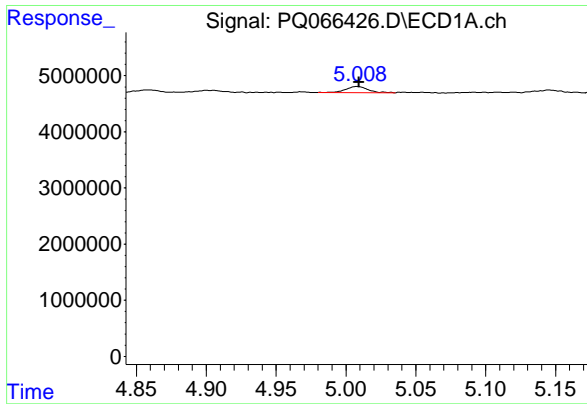
#22 AR-1248-2

R.T.: 4.817 min
 Delta R.T.: 0.000 min
 Response: 2431549
 Conc: 21.09 ng/ml



#22 AR-1248-2

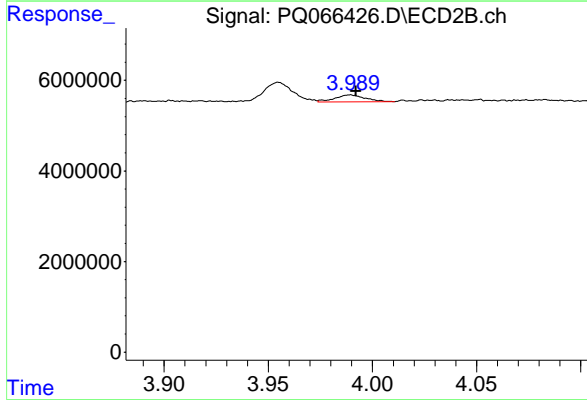
R.T.: 3.955 min
 Delta R.T.: 0.000 min
 Response: 4290017
 Conc: 19.39 ng/ml



#23 AR-1248-3

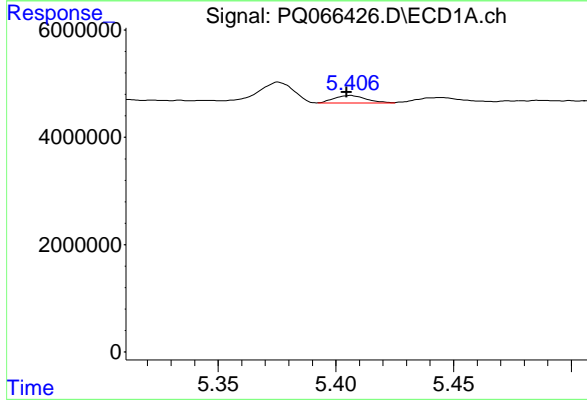
R.T.: 5.008 min
 Delta R.T.: -0.001 min
 Response: 1245456
 Conc: 9.07 ng/ml

Instrument : ECD_Q
 ClientSampleId : LOD-MDL-WATER-01-QT2-2024



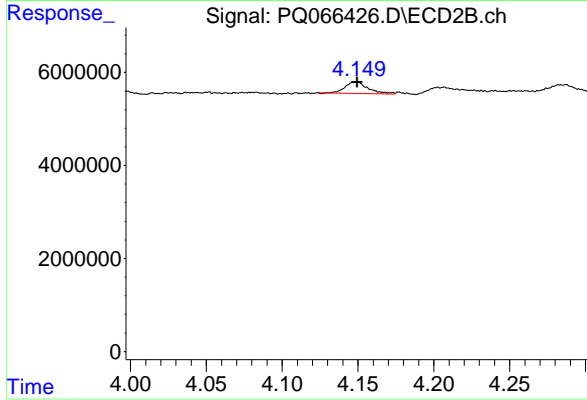
#23 AR-1248-3

R.T.: 3.990 min
 Delta R.T.: -0.002 min
 Response: 1564175
 Conc: 7.40 ng/ml



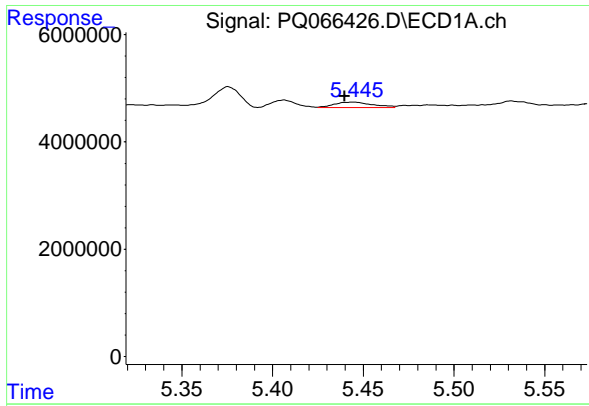
#24 AR-1248-4

R.T.: 5.406 min
 Delta R.T.: 0.002 min
 Response: 1281213
 Conc: 8.89 ng/ml



#24 AR-1248-4

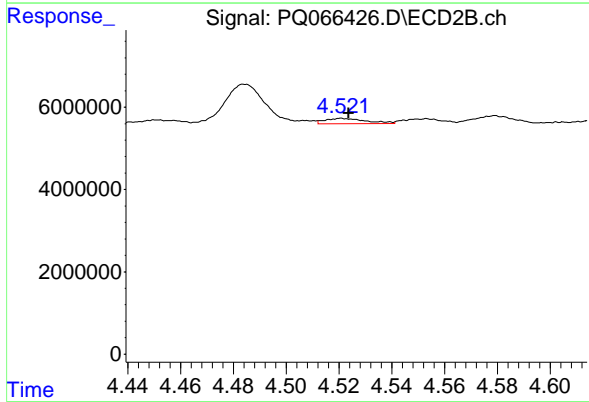
R.T.: 4.149 min
 Delta R.T.: -0.001 min
 Response: 2594865
 Conc: 10.07 ng/ml



#25 AR-1248-5

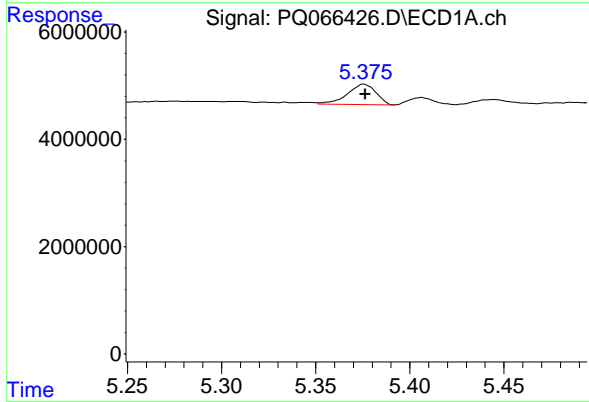
R.T.: 5.445 min
 Delta R.T.: 0.005 min
 Response: 1476292
 Conc: 10.10 ng/ml

Instrument : ECD_Q
 ClientSampleId : LOD-MDL-WATER-01-QT2-2024



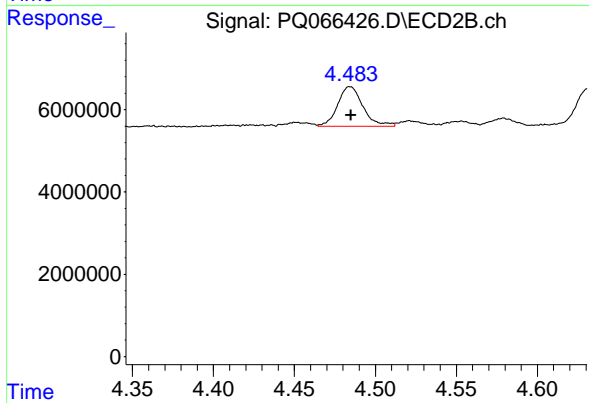
#25 AR-1248-5

R.T.: 4.521 min
 Delta R.T.: -0.003 min
 Response: 1398338
 Conc: 5.42 ng/ml



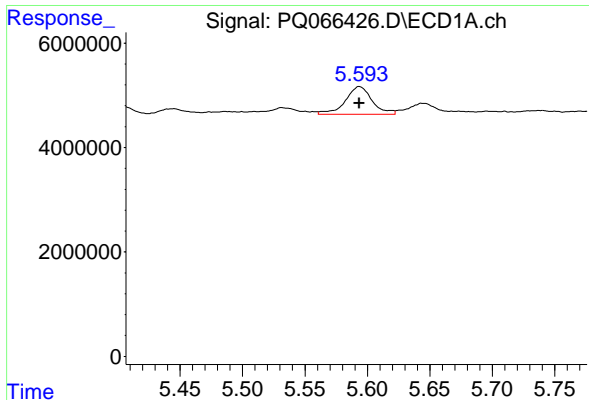
#26 AR-1254-1

R.T.: 5.376 min
 Delta R.T.: 0.000 min
 Response: 4013150
 Conc: 26.71 ng/ml



#26 AR-1254-1

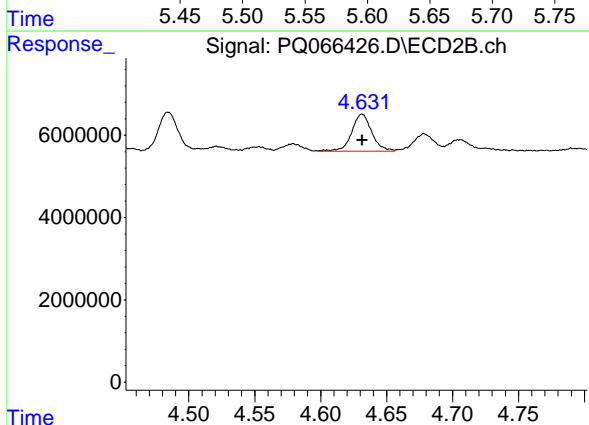
R.T.: 4.484 min
 Delta R.T.: 0.000 min
 Response: 10478855
 Conc: 26.64 ng/ml



#27 AR-1254-2

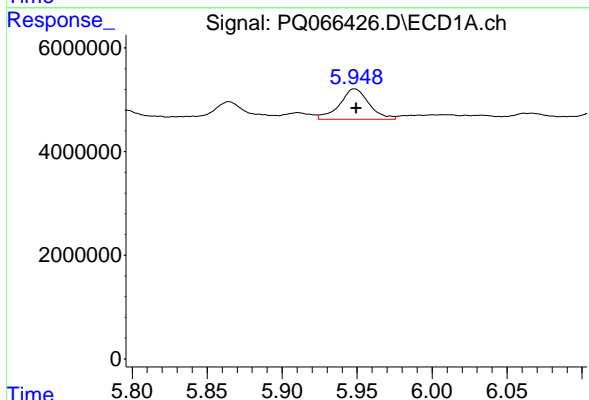
R.T.: 5.594 min
 Delta R.T.: 0.000 min
 Response: 7945200
 Conc: 33.70 ng/ml

Instrument :
 ECD_Q
 ClientSampleId :
 LOD-MDL-WATER-01-QT2-2024



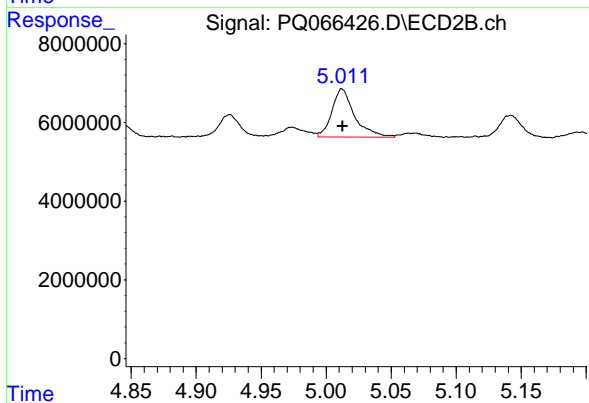
#27 AR-1254-2

R.T.: 4.631 min
 Delta R.T.: 0.000 min
 Response: 9557896
 Conc: 28.04 ng/ml



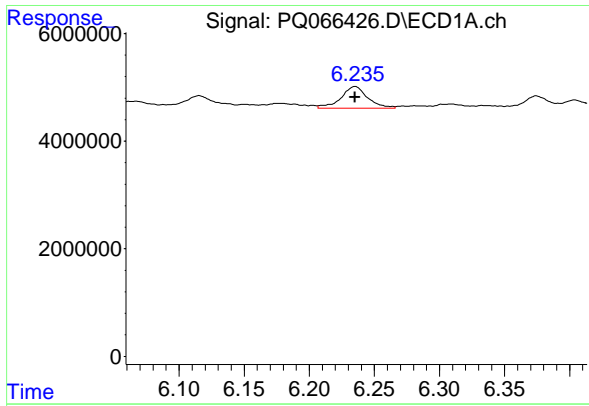
#28 AR-1254-3

R.T.: 5.948 min
 Delta R.T.: 0.000 min
 Response: 8043060
 Conc: 32.73 ng/ml



#28 AR-1254-3

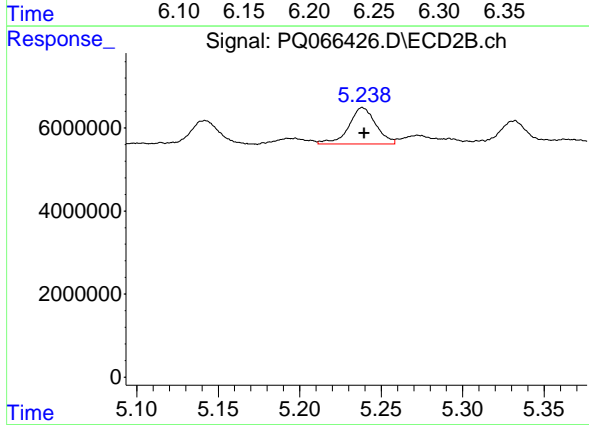
R.T.: 5.012 min
 Delta R.T.: 0.000 min
 Response: 14835456
 Conc: 27.47 ng/ml



#29 AR-1254-4

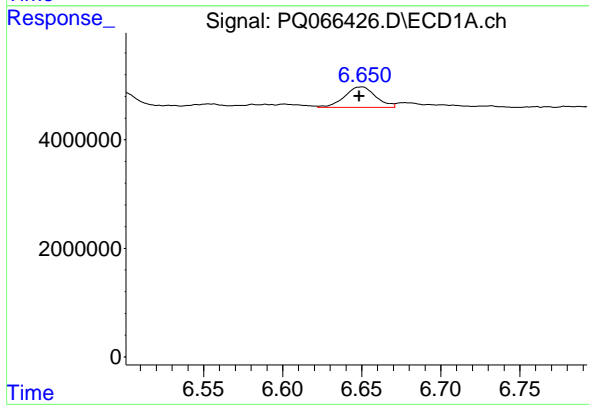
R.T.: 6.235 min
 Delta R.T.: 0.000 min
 Response: 5724994
 Conc: 32.87 ng/ml

Instrument : ECD_Q
 ClientSampleId : LOD-MDL-WATER-01-QT2-2024



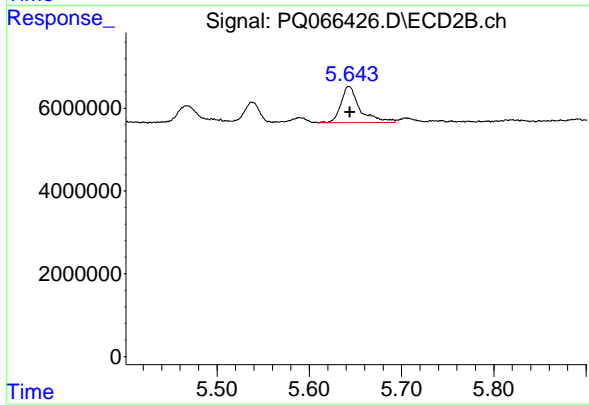
#29 AR-1254-4

R.T.: 5.239 min
 Delta R.T.: -0.001 min
 Response: 10183266
 Conc: 27.41 ng/ml



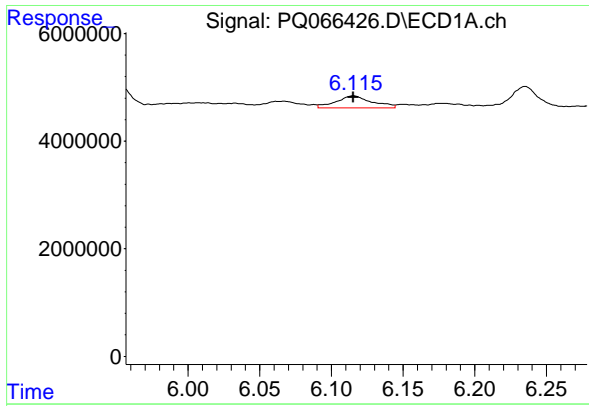
#30 AR-1254-5

R.T.: 6.650 min
 Delta R.T.: 0.001 min
 Response: 5139270
 Conc: 27.98 ng/ml



#30 AR-1254-5

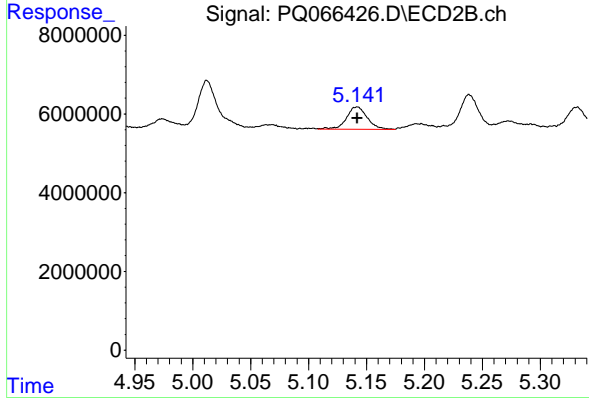
R.T.: 5.643 min
 Delta R.T.: -0.001 min
 Response: 12476312
 Conc: 25.61 ng/ml



#31 AR-1260-1

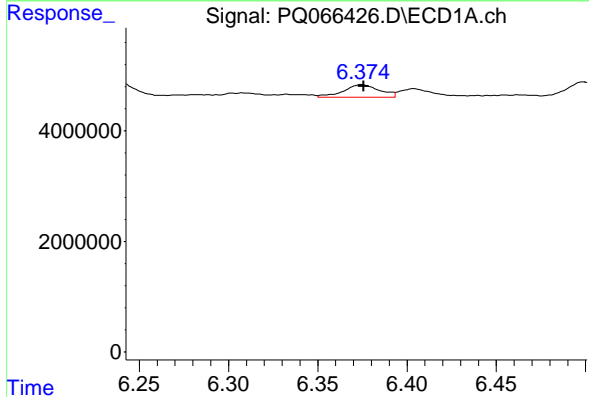
R.T.: 6.116 min
 Delta R.T.: 0.000 min
 Response: 3938542
 Conc: 21.77 ng/ml

Instrument : ECD_Q
 ClientSampleId : LOD-MDL-WATER-01-QT2-2024



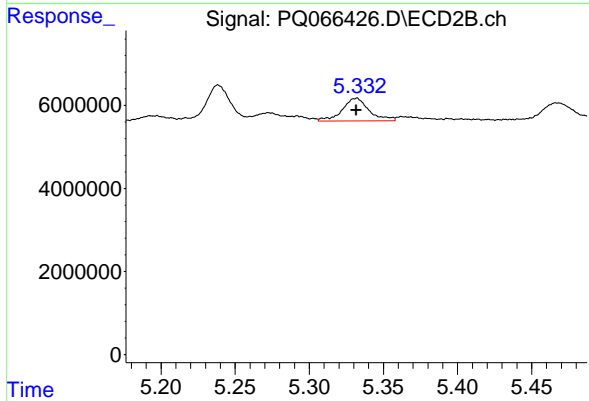
#31 AR-1260-1

R.T.: 5.142 min
 Delta R.T.: 0.000 min
 Response: 6993278
 Conc: 17.86 ng/ml



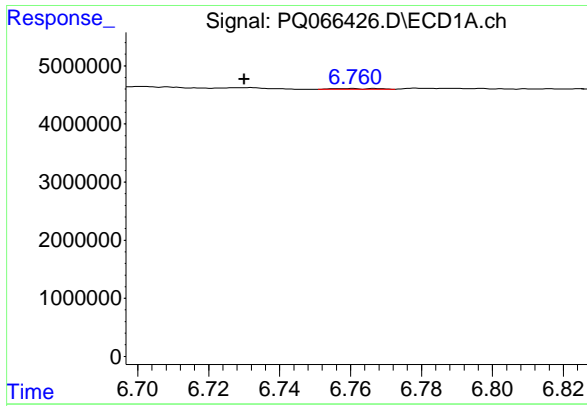
#32 AR-1260-2

R.T.: 6.374 min
 Delta R.T.: -0.001 min
 Response: 3267097
 Conc: 15.41 ng/ml



#32 AR-1260-2

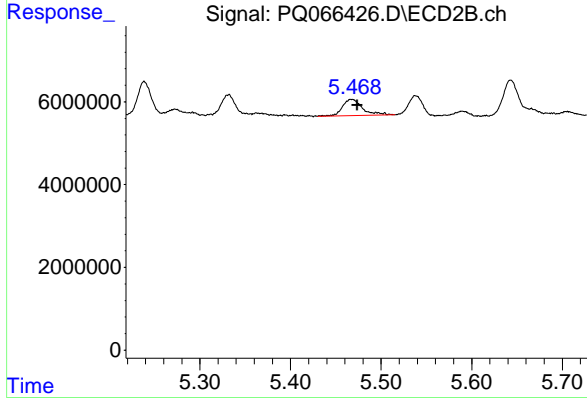
R.T.: 5.332 min
 Delta R.T.: 0.000 min
 Response: 6845358
 Conc: 14.36 ng/ml



#33 AR-1260-3

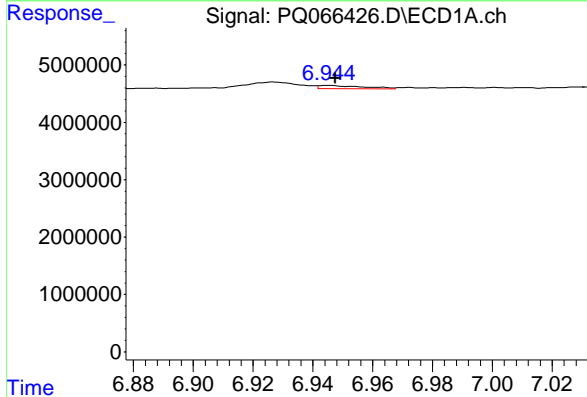
R.T.: 6.760 min
 Delta R.T.: 0.030 min
 Response: 121301
 Conc: 0.79 ng/ml

Instrument : ECD_Q
 ClientSampleId : LOD-MDL-WATER-01-QT2-2024



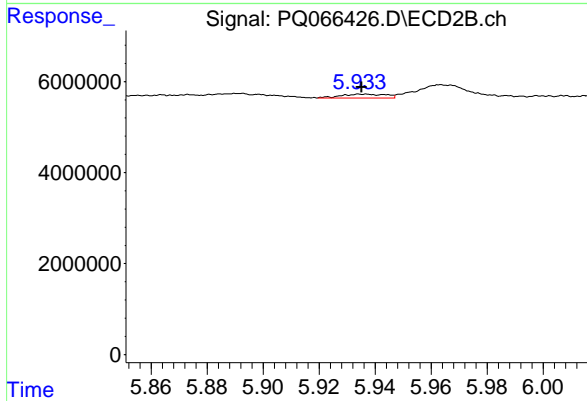
#33 AR-1260-3

R.T.: 5.467 min
 Delta R.T.: -0.007 min
 Response: 6045928
 Conc: 13.73 ng/ml



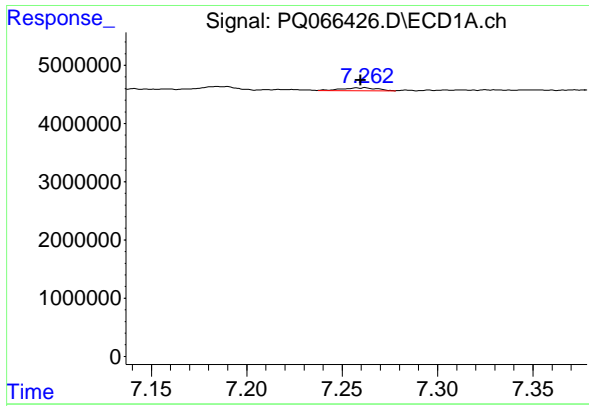
#34 AR-1260-4

R.T.: 6.945 min
 Delta R.T.: -0.002 min
 Response: 579763
 Conc: 3.33 ng/ml



#34 AR-1260-4

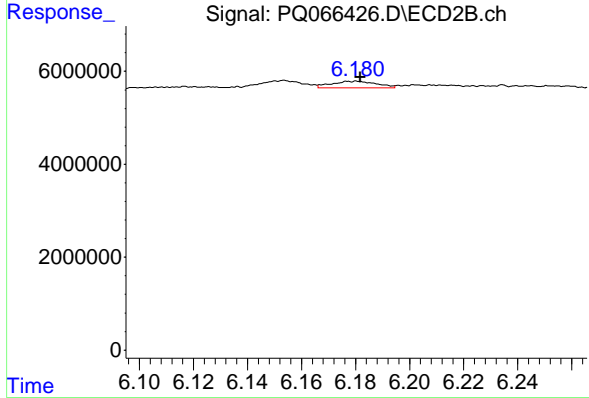
R.T.: 5.936 min
 Delta R.T.: 0.000 min
 Response: 930850
 Conc: 2.44 ng/ml



#35 AR-1260-5

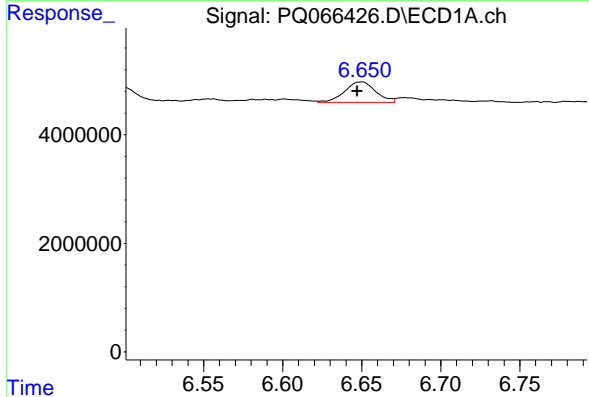
R.T.: 7.262 min
 Delta R.T.: 0.002 min
 Response: 629370
 Conc: 1.92 ng/ml

Instrument : ECD_Q
 ClientSampleId : LOD-MDL-WATER-01-QT2-2024



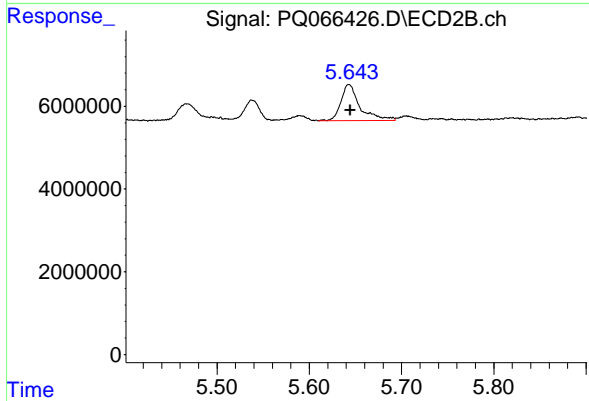
#35 AR-1260-5

R.T.: 6.180 min
 Delta R.T.: -0.002 min
 Response: 1684674
 Conc: 2.06 ng/ml



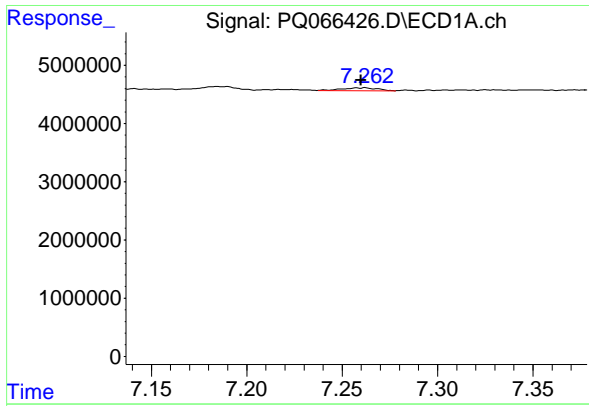
#36 AR-1262-1

R.T.: 6.650 min
 Delta R.T.: 0.002 min
 Response: 5139270
 Conc: 34.99 ng/ml



#36 AR-1262-1

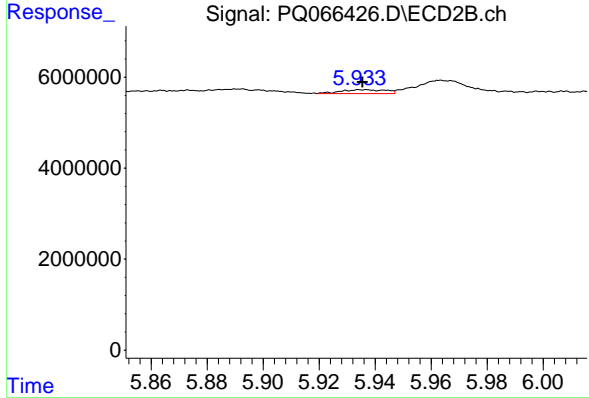
R.T.: 5.643 min
 Delta R.T.: -0.001 min
 Response: 12476312
 Conc: 44.68 ng/ml



#37 AR-1262-2

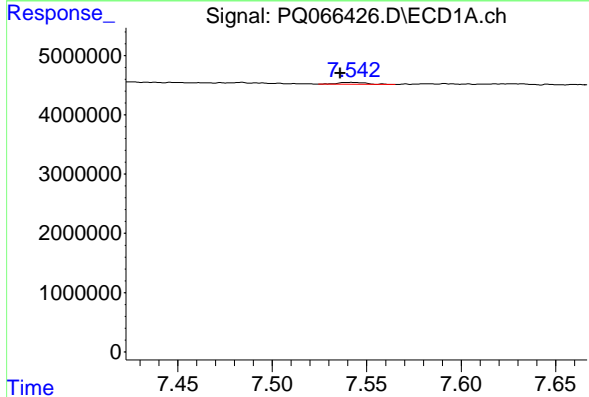
R.T.: 7.262 min
 Delta R.T.: 0.002 min
 Response: 629370
 Conc: 1.72 ng/ml

Instrument : ECD_Q
 ClientSampleId : LOD-MDL-WATER-01-QT2-2024



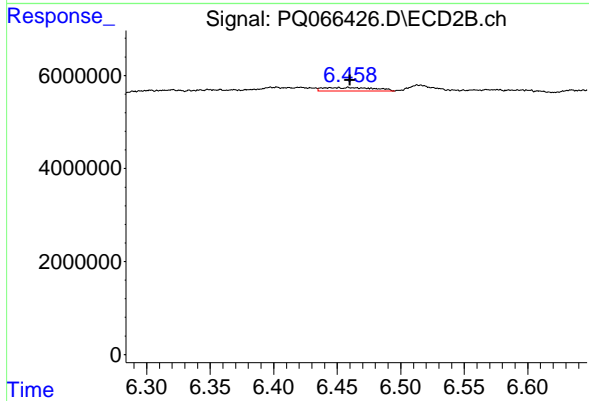
#37 AR-1262-2

R.T.: 5.936 min
 Delta R.T.: 0.000 min
 Response: 930850
 Conc: 1.96 ng/ml



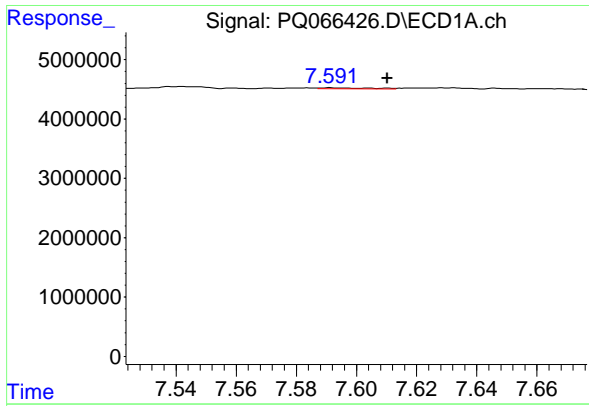
#38 AR-1262-3

R.T.: 7.542 min
 Delta R.T.: 0.006 min
 Response: 356185
 Conc: 1.48 ng/ml



#38 AR-1262-3

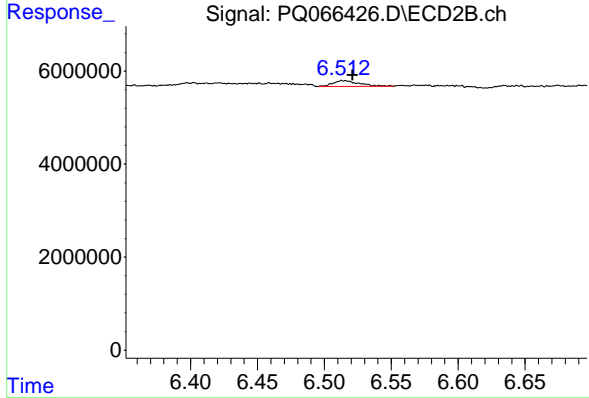
R.T.: 6.459 min
 Delta R.T.: -0.001 min
 Response: 2115834
 Conc: 5.60 ng/ml



#39 AR-1262-4

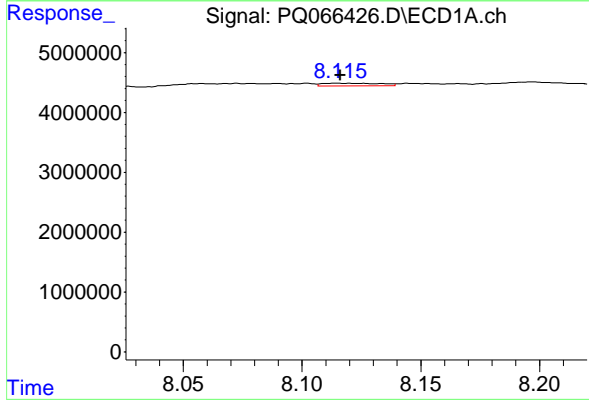
R.T.: 7.591 min
 Delta R.T.: -0.019 min
 Response: 202458
 Conc: 1.09 ng/ml

Instrument : ECD_Q
 ClientSampleId : LOD-MDL-WATER-01-QT2-2024



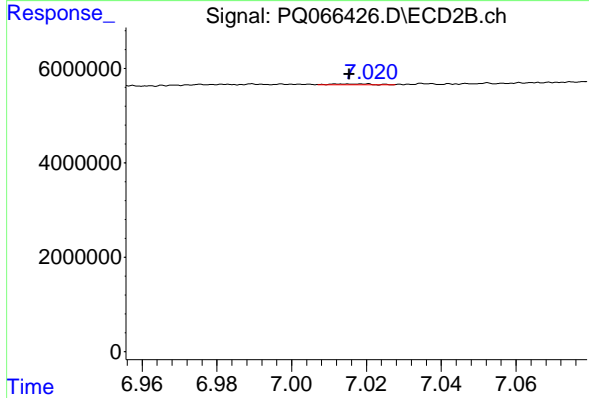
#39 AR-1262-4

R.T.: 6.514 min
 Delta R.T.: -0.007 min
 Response: 1643772
 Conc: 2.36 ng/ml



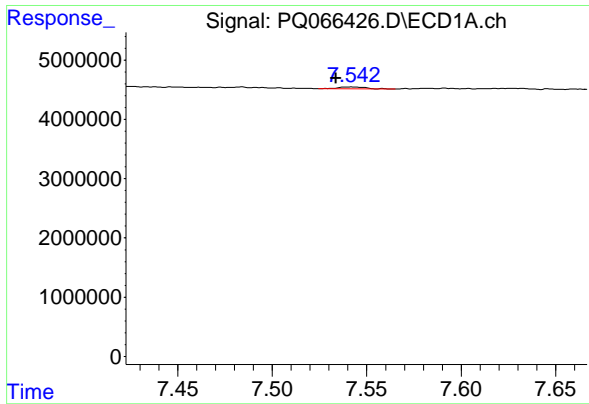
#40 AR-1262-5

R.T.: 8.115 min
 Delta R.T.: -0.001 min
 Response: 750802
 Conc: 6.07 ng/ml



#40 AR-1262-5

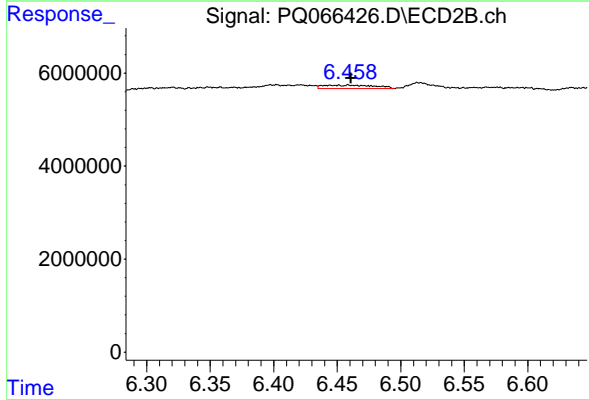
R.T.: 7.019 min
 Delta R.T.: 0.003 min
 Response: 102576
 Conc: 0.31 ng/ml



#41 AR-1268-1

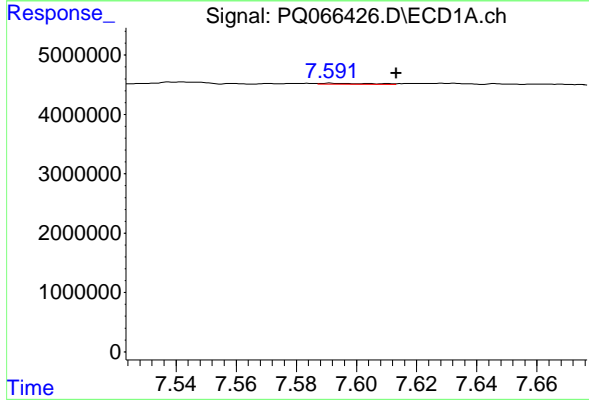
R.T.: 7.542 min
 Delta R.T.: 0.009 min
 Response: 356185
 Conc: 0.85 ng/ml

Instrument : ECD_Q
 ClientSampleId : LOD-MDL-WATER-01-QT2-2024



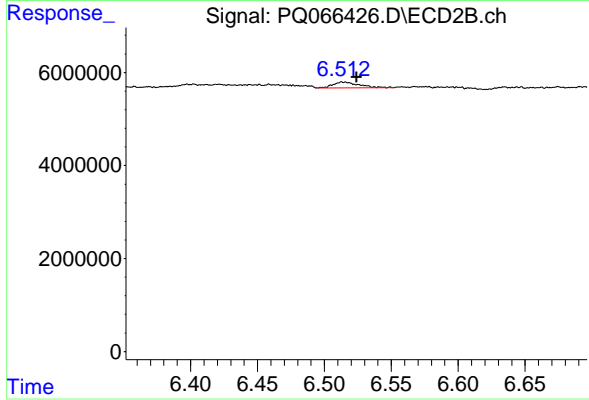
#41 AR-1268-1

R.T.: 6.459 min
 Delta R.T.: -0.002 min
 Response: 2115834
 Conc: 1.89 ng/ml



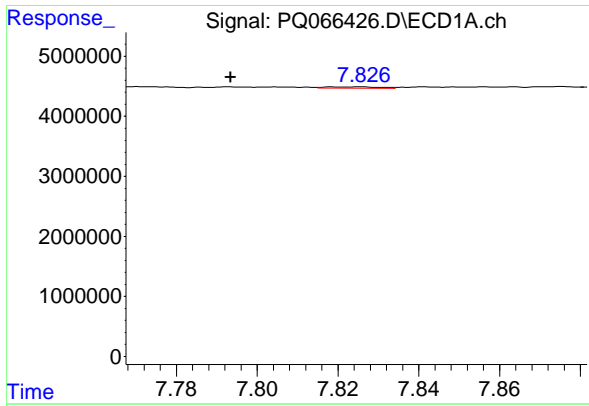
#42 AR-1268-2

R.T.: 7.591 min
 Delta R.T.: -0.022 min
 Response: 202458
 Conc: 0.52 ng/ml



#42 AR-1268-2

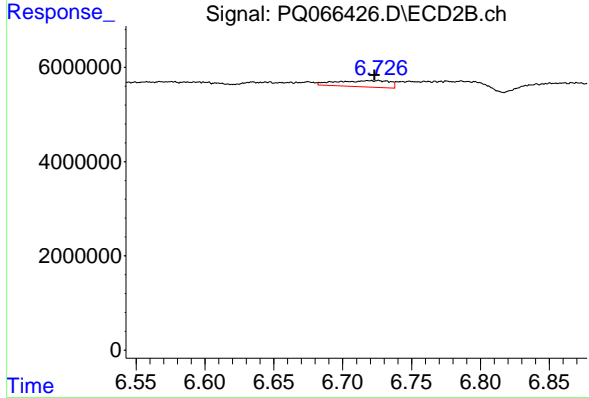
R.T.: 6.514 min
 Delta R.T.: -0.010 min
 Response: 1643772
 Conc: 1.61 ng/ml



#43 AR-1268-3

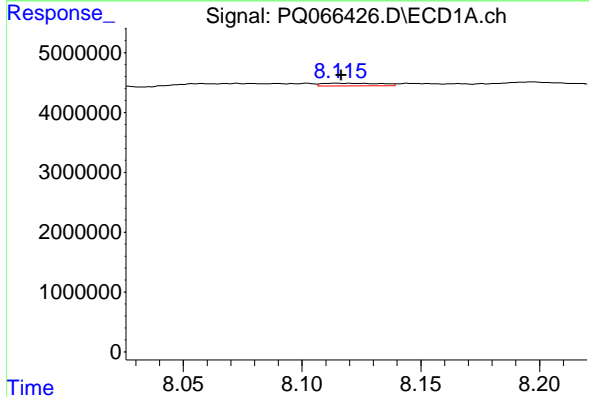
R.T.: 7.826 min
 Delta R.T.: 0.032 min
 Response: 204989
 Conc: 0.64 ng/ml

Instrument : ECD_Q
 ClientSampleId : LOD-MDL-WATER-01-QT2-2024



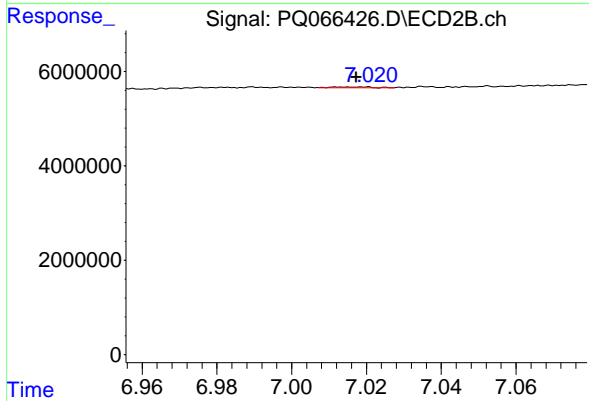
#43 AR-1268-3

R.T.: 6.726 min
 Delta R.T.: 0.003 min
 Response: 3479868
 Conc: 3.91 ng/ml



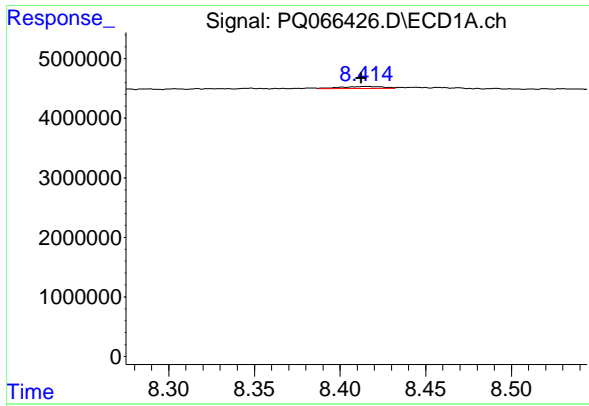
#44 AR-1268-4

R.T.: 8.115 min
 Delta R.T.: -0.002 min
 Response: 750802
 Conc: 5.30 ng/ml



#44 AR-1268-4

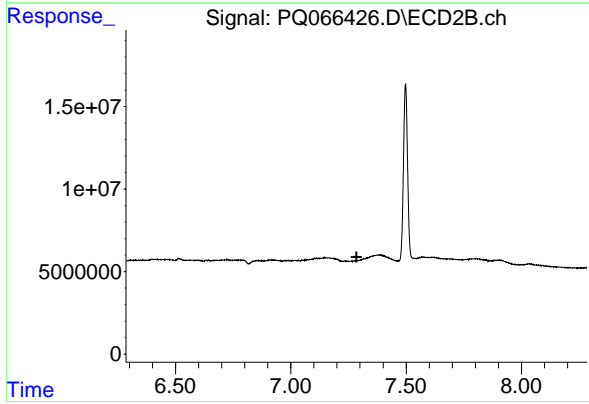
R.T.: 7.019 min
 Delta R.T.: 0.002 min
 Response: 102576
 Conc: 0.28 ng/ml



#45 AR-1268-5

R.T.: 8.415 min
 Delta R.T.: 0.003 min
 Response: 583164
 Conc: 0.62 ng/ml

Instrument :
 ECD_Q
 ClientSampleId :
 LOD-MDL-WATER-01-QT2-2024



#45 AR-1268-5

R.T.: 7.280 min
 Delta R.T.: -0.005 min
 Response: -19024
 Conc: N.D.