

Data Path : Z:\pestpcbsrv\HPCHEM1\ECD_Q\Data\PQ050924\
 Data File : PQ066464.D
 Signal(s) : Signal #1: ECD1A.ch Signal #2: ECD2B.ch
 Acq On : 10 May 2024 00:23
 Operator : YP\AJ
 Sample : P2403-08
 Misc : AR1221 LOQ 50 PPB
 ALS Vial : 51 Sample Multiplier: 1

Instrument :
 ECD_Q
 ClientSampleId :
 LOQ-WATER-02-QT2-2024

Integration File signal 1: autoint1.e
 Integration File signal 2: autoint2.e
 Quant Time: May 10 01:22:32 2024
 Quant Method : Z:\pestpcbsrv\HPCHEM1\ECD_Q\Method\PQ042324.M
 Quant Title : GC EXTRACTABLES
 QLast Update : Wed Apr 24 04:24:21 2024
 Response via : Initial Calibration
 Integrator: ChemStation

Volume Inj. : 2 µl
 Signal #1 Phase : ZB-MR2 Signal #2 Phase: ZB-MR2
 Signal #1 Info : 30Mx0.32mmx 0.50µ Signal #2 Info : 30M x 0.32mm x 0.25µm

Compound	RT#1	RT#2	Resp#1	Resp#2	ng/ml	ng/ml

System Monitoring Compounds						
1) SA Tetrachlo...	3.439	2.733	97719317	143.3E6	22.478	22.404
2) SA Decachlor...	8.648	7.497	58580948	157.5E6	23.801	25.034
Target Compounds						
3) L1 AR-1016-1	4.550	3.730	508994	1058411	3.839	4.538
4) L1 AR-1016-2	4.570	3.745	1045777	1508531	5.222	4.456
5) L1 AR-1016-3	4.630	3.909	883740	269417	7.046	1.438 #
6) L1 AR-1016-4	4.722	3.958	419403	433356	4.196	2.748 #
7) L1 AR-1016-5	5.005	4.154	117935	114435	1.169	0.590 #
8) L2 AR-1221-1	3.642	2.933	2123906	4513894	56.832	53.590
9) L2 AR-1221-2	3.721	3.008	3386977	4789740	87.645	79.187
10) L2 AR-1221-3	3.792	3.077	7205052	10950778	58.855	58.474
11) L3 AR-1232-1	3.792	3.077	7205052	10950778	71.343	71.153
12) L3 AR-1232-2	4.290	3.745	758218	1508531	13.754	9.362 #
13) L3 AR-1232-3	4.570	3.909	1045777	269417	10.848	3.055 #
14) L3 AR-1232-4	4.722	3.992	419403	276269	8.860	3.667 #
15) L3 AR-1232-5	4.825	4.154	395670	114435	11.884	1.357 #
16) L4 AR-1242-1	4.550	3.730	508994	1058411	4.595	5.336
17) L4 AR-1242-2	4.570	3.745	1045777	1508531	6.190	5.334
18) L4 AR-1242-3	4.630	3.909	883740	269417	8.350	1.717 #
19) L4 AR-1242-4	4.722	3.992	419403	276269	5.030	1.883 #
20) L4 AR-1242-5	5.449	4.485	378235	490272	4.281	2.550 #
21) L5 AR-1248-1	4.550	3.730	508994	1058411	6.298	7.112
22) L5 AR-1248-2	4.825	3.958	395670	433356	3.431	1.958 #
23) L5 AR-1248-3	5.005	3.992	117935	276269	0.859	1.306 #
24) L5 AR-1248-4	5.402	4.154	2467041	114435	17.119	0.444 #
25) L5 AR-1248-5	5.449	4.510	378235	508720	2.587	1.971
26) L6 AR-1254-1	5.402f	4.485	2467041	490272	16.421	1.247 #
27) L6 AR-1254-2	5.589	4.626	381649	144915	1.619	0.425 #
28) L6 AR-1254-3	5.952	5.025	572014	4210039	2.328	7.795 #
29) L6 AR-1254-4	6.247	5.244	2308731	574281	13.256	1.546 #
30) L6 AR-1254-5	6.679f	5.637	928480	359883	5.055	0.739 #
31) L7 AR-1260-1	6.109	5.140	700575	421146	3.872	1.075 #
32) L7 AR-1260-2	6.356	5.348	461234	421719	2.176	0.885 #
33) L7 AR-1260-3	6.769f	5.456	239078	256341	1.555	0.582 #
34) L7 AR-1260-4	6.924	5.928	1102699	336407	6.341	0.884 #
35) L7 AR-1260-5	7.288f	6.175	94922	402406	0.290	0.491 #
36) L8 AR-1262-1	6.679f	5.637	928480	359883	6.321	1.289 #
37) L8 AR-1262-2	7.288f	5.928	94922	336407	0.259	0.708 #
38) L8 AR-1262-3	7.553	6.457	217739	243362	0.905	0.644 #
39) L8 AR-1262-4	7.602	6.512	373525	732159	2.012	1.049 #
41) L9 AR-1268-1	7.553	6.457	217739	243362	0.520	0.217 #
42) L9 AR-1268-2	7.602	6.512	373525	732159	0.960	0.718 #

Data Path : Z:\pestpcbsrv\HPCHEM1\ECD_Q\Data\PQ050924\
 Data File : PQ066464.D
 Signal(s) : Signal #1: ECD1A.ch Signal #2: ECD2B.ch
 Acq On : 10 May 2024 00:23
 Operator : YP\AJ
 Sample : P2403-08
 Misc : AR1221 LOQ 50 PPB
 ALS Vial : 51 Sample Multiplier: 1

Instrument :
 ECD_Q
ClientSampleId :
 LOQ-WATER-02-QT2-2024

Integration File signal 1: autoint1.e
 Integration File signal 2: autoint2.e
 Quant Time: May 10 01:22:32 2024
 Quant Method : Z:\pestpcbsrv\HPCHEM1\ECD_Q\Method\PQ042324.M
 Quant Title : GC EXTRACTABLES
 QLast Update : Wed Apr 24 04:24:21 2024
 Response via : Initial Calibration
 Integrator: ChemStation

Volume Inj. : 2 µl
 Signal #1 Phase : ZB-MR1 Signal #2 Phase: ZB-MR2
 Signal #1 Info : 30Mx0.32mmx 0.50µ Signal #2 Info : 30M x 0.32mm x 0.25µm

	Compound	RT#1	RT#2	Resp#1	Resp#2	ng/ml	ng/ml
43)	L9 AR-1268-3	7.779	6.718	335167	515306	1.043	0.579 #
45)	L9 AR-1268-5	8.408	7.285	529460	79642	0.559	0.030 #

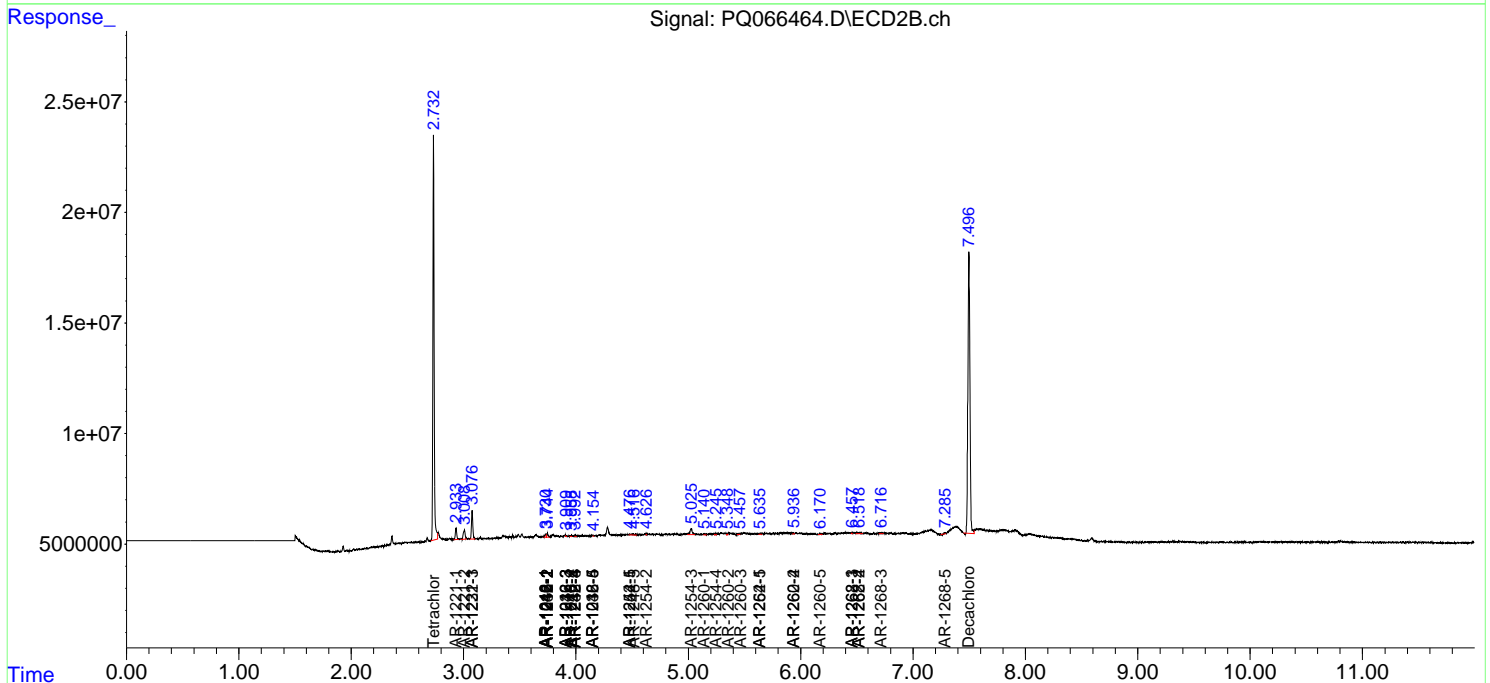
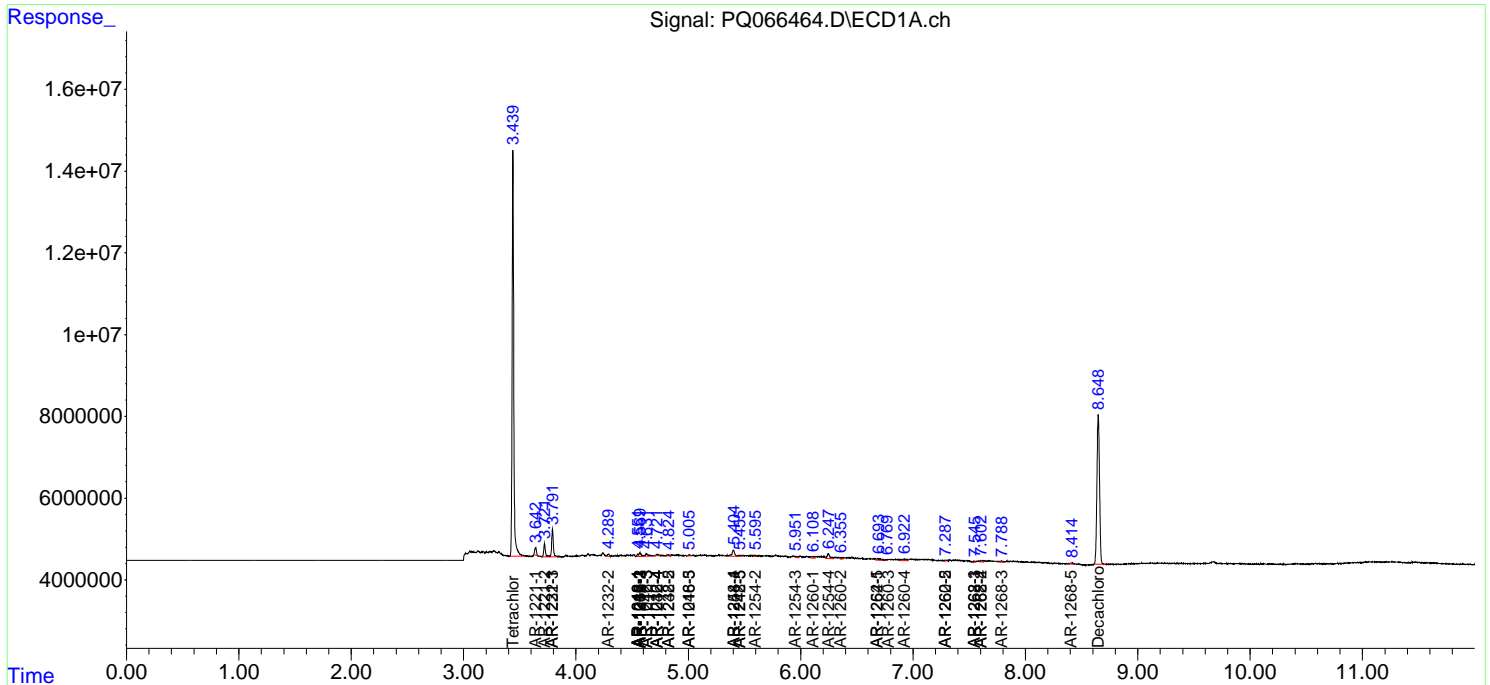
(f)=RT Delta > 1/2 Window (#)=Amounts differ by > 25% (m)=manual int.

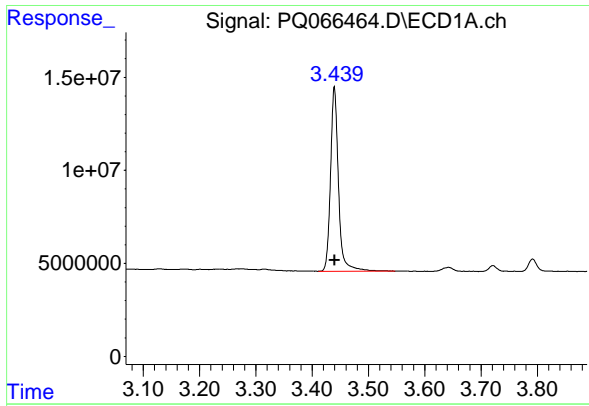
Data Path : Z:\pestpcbsrv\HPCHEM1\ECD_Q\Data\PQ050924\
 Data File : PQ066464.D
 Signal(s) : Signal #1: ECD1A.ch Signal #2: ECD2B.ch
 Acq On : 10 May 2024 00:23
 Operator : YP\AJ
 Sample : P2403-08
 Misc : AR1221 LOQ 50 PPB
 ALS Vial : 51 Sample Multiplier: 1

Instrument :
 ECD_Q
 ClientSampleId :
 LOQ-WATER-02-QT2-2024

Integration File signal 1: autoint1.e
 Integration File signal 2: autoint2.e
 Quant Time: May 10 01:22:32 2024
 Quant Method : Z:\pestpcbsrv\HPCHEM1\ECD_Q\Method\PQ042324.M
 Quant Title : GC EXTRACTABLES
 QLast Update : Wed Apr 24 04:24:21 2024
 Response via : Initial Calibration
 Integrator: ChemStation

Volume Inj. : 2 µl
 Signal #1 Phase : ZB-MR1 Signal #2 Phase: ZB-MR2
 Signal #1 Info : 30Mx0.32mmx 0.50µm Signal #2 Info : 30M x 0.32mm x 0.25µm

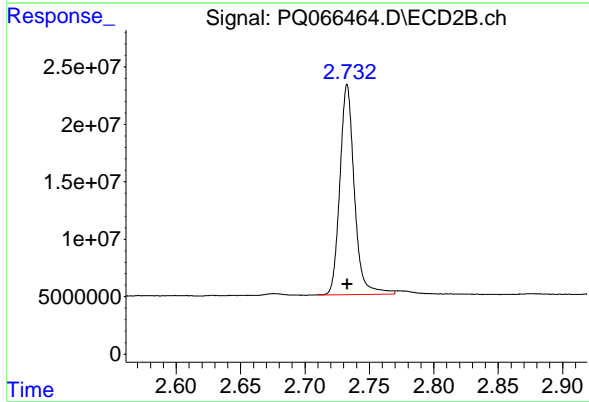




#1 Tetrachloro-m-xylene

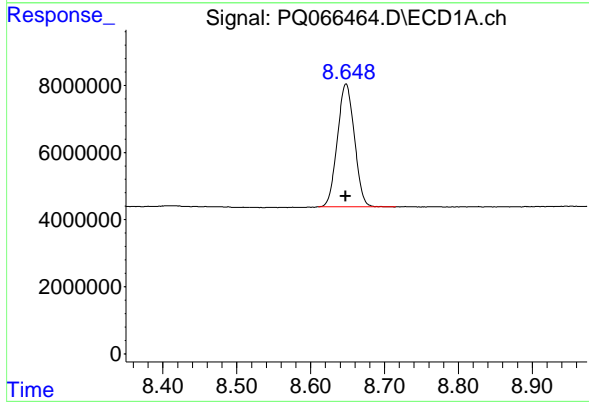
R.T.: 3.439 min
 Delta R.T.: 0.000 min
 Response: 97719317
 Conc: 22.48 ng/ml

Instrument : ECD_Q
 ClientSampleId : LOQ-WATER-02-QT2-2024



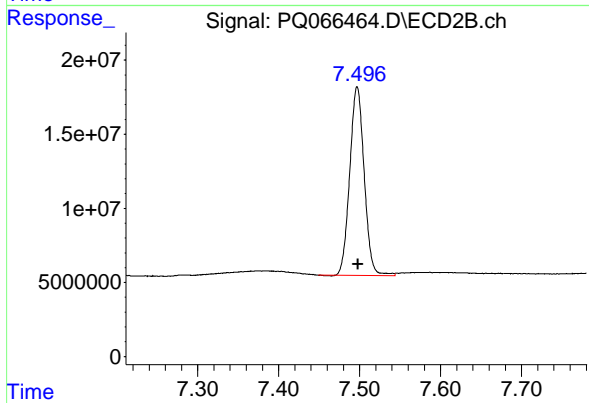
#1 Tetrachloro-m-xylene

R.T.: 2.733 min
 Delta R.T.: 0.000 min
 Response: 143323048
 Conc: 22.40 ng/ml



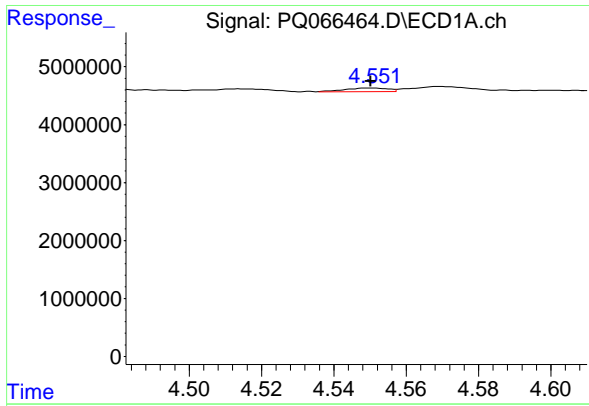
#2 Decachlorobiphenyl

R.T.: 8.648 min
 Delta R.T.: 0.000 min
 Response: 58580948
 Conc: 23.80 ng/ml



#2 Decachlorobiphenyl

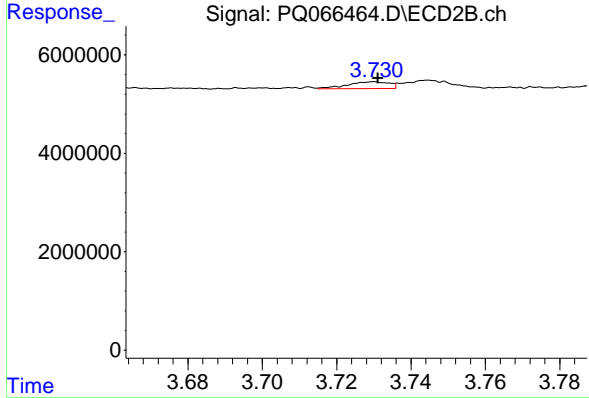
R.T.: 7.497 min
 Delta R.T.: -0.001 min
 Response: 157502633
 Conc: 25.03 ng/ml



#3 AR-1016-1

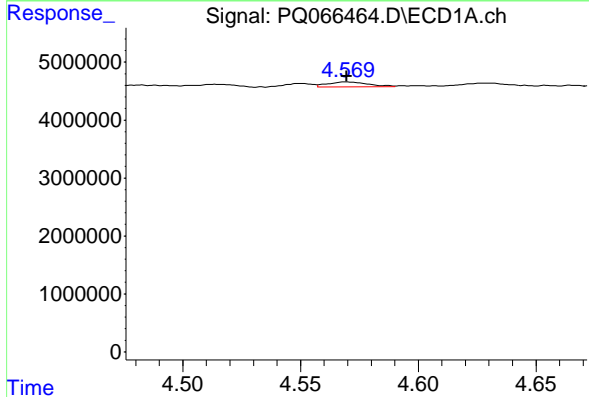
R.T.: 4.550 min
 Delta R.T.: 0.000 min
 Response: 508994
 Conc: 3.84 ng/ml

Instrument : ECD_Q
 ClientSampleId : LOQ-WATER-02-QT2-2024



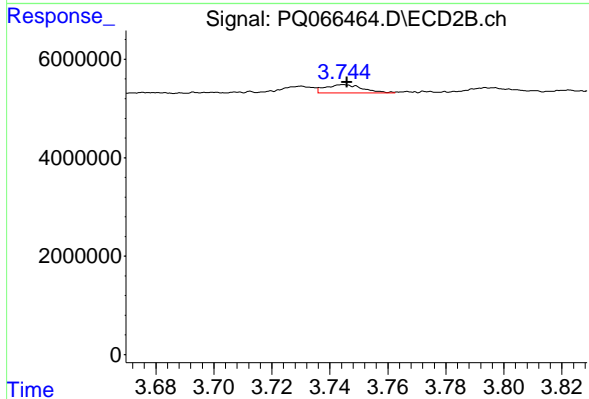
#3 AR-1016-1

R.T.: 3.730 min
 Delta R.T.: 0.000 min
 Response: 1058411
 Conc: 4.54 ng/ml



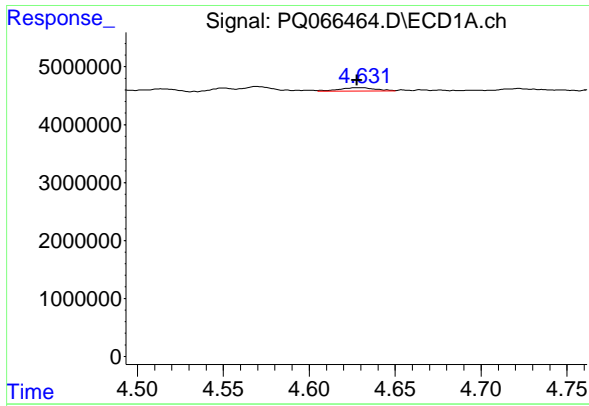
#4 AR-1016-2

R.T.: 4.570 min
 Delta R.T.: 0.000 min
 Response: 1045777
 Conc: 5.22 ng/ml



#4 AR-1016-2

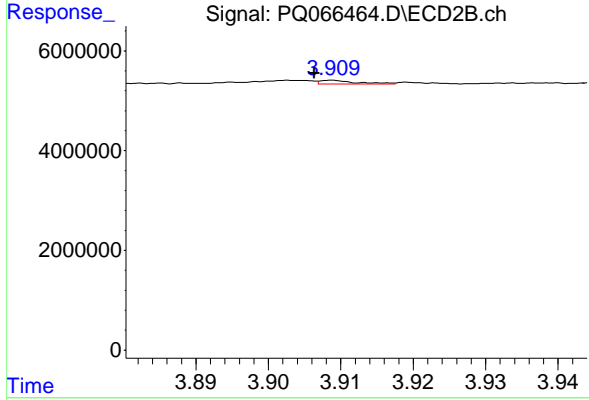
R.T.: 3.745 min
 Delta R.T.: -0.001 min
 Response: 1508531
 Conc: 4.46 ng/ml



#5 AR-1016-3

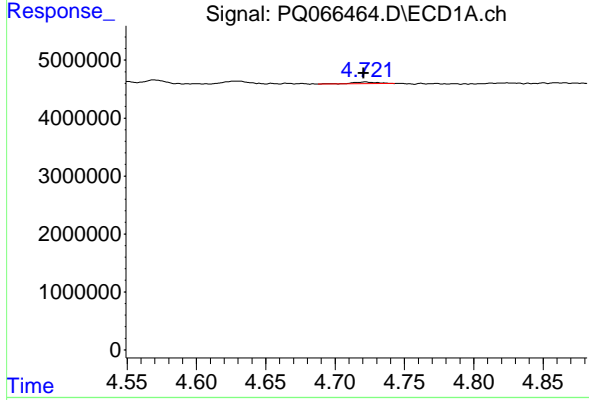
R.T.: 4.630 min
 Delta R.T.: 0.002 min
 Response: 883740
 Conc: 7.05 ng/ml

Instrument :
 ECD_Q
 ClientSampleId :
 LOQ-WATER-02-QT2-2024



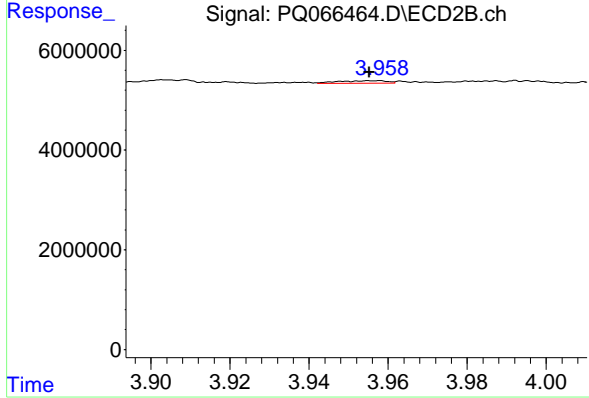
#5 AR-1016-3

R.T.: 3.909 min
 Delta R.T.: 0.003 min
 Response: 269417
 Conc: 1.44 ng/ml



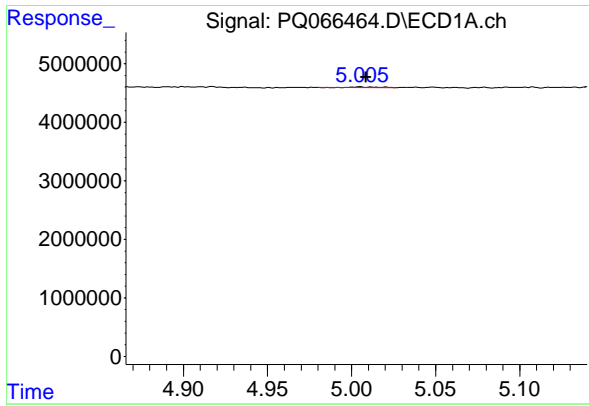
#6 AR-1016-4

R.T.: 4.722 min
 Delta R.T.: 0.001 min
 Response: 419403
 Conc: 4.20 ng/ml



#6 AR-1016-4

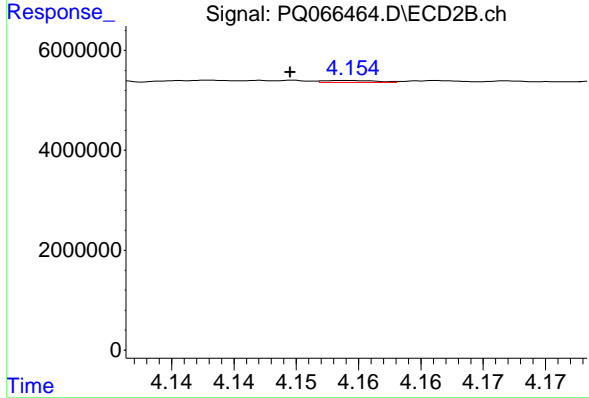
R.T.: 3.958 min
 Delta R.T.: 0.002 min
 Response: 433356
 Conc: 2.75 ng/ml



#7 AR-1016-5

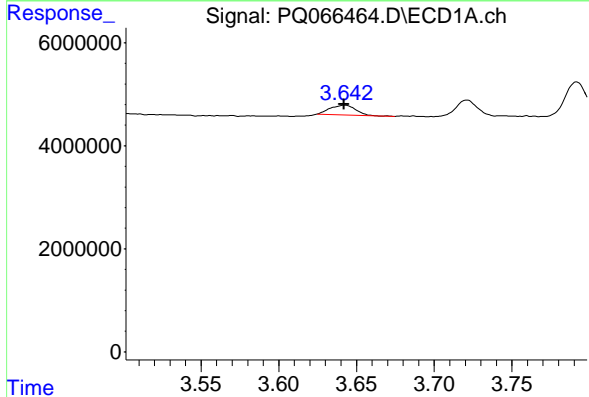
R.T.: 5.005 min
 Delta R.T.: -0.004 min
 Response: 117935
 Conc: 1.17 ng/ml

Instrument : ECD_Q
 ClientSampleId : LOQ-WATER-02-QT2-2024



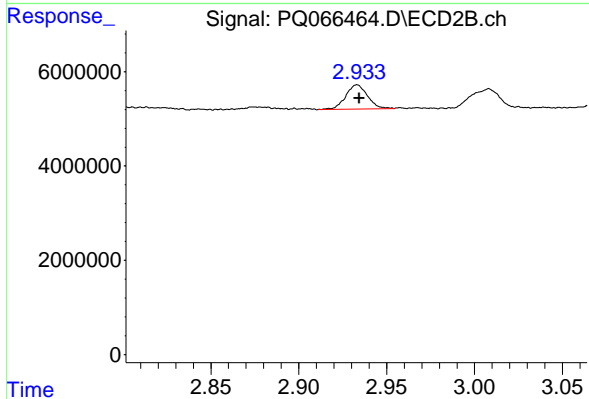
#7 AR-1016-5

R.T.: 4.154 min
 Delta R.T.: 0.005 min
 Response: 114435
 Conc: 0.59 ng/ml



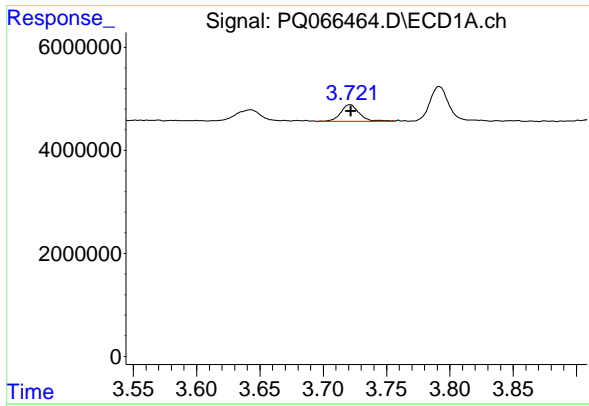
#8 AR-1221-1

R.T.: 3.642 min
 Delta R.T.: 0.000 min
 Response: 2123906
 Conc: 56.83 ng/ml



#8 AR-1221-1

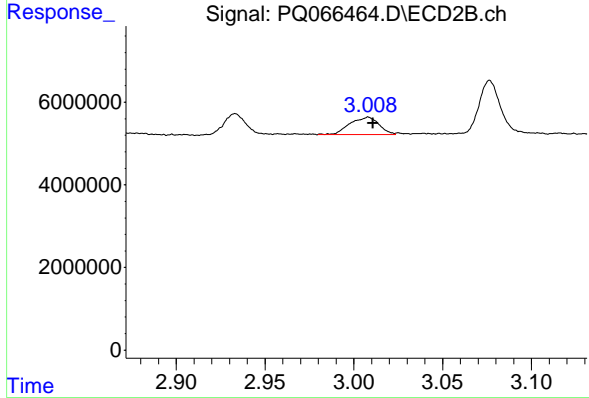
R.T.: 2.933 min
 Delta R.T.: -0.001 min
 Response: 4513894
 Conc: 53.59 ng/ml



#9 AR-1221-2

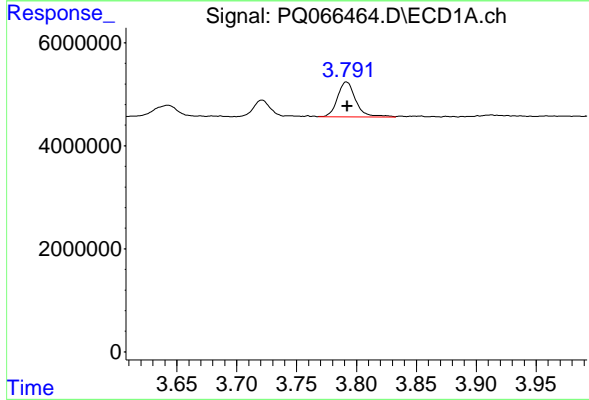
R.T.: 3.721 min
 Delta R.T.: -0.001 min
 Response: 3386977
 Conc: 87.65 ng/ml

Instrument : ECD_Q
 ClientSampleId : LOQ-WATER-02-QT2-2024



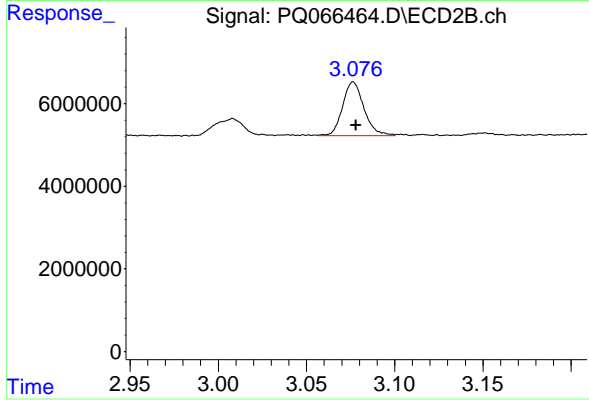
#9 AR-1221-2

R.T.: 3.008 min
 Delta R.T.: -0.003 min
 Response: 4789740
 Conc: 79.19 ng/ml



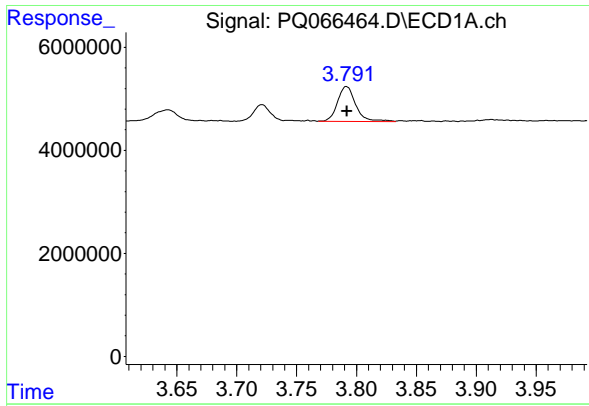
#10 AR-1221-3

R.T.: 3.792 min
 Delta R.T.: 0.000 min
 Response: 7205052
 Conc: 58.85 ng/ml



#10 AR-1221-3

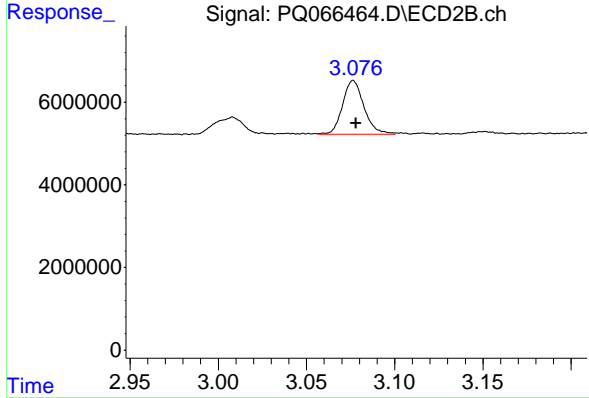
R.T.: 3.077 min
 Delta R.T.: -0.001 min
 Response: 10950778
 Conc: 58.47 ng/ml



#11 AR-1232-1

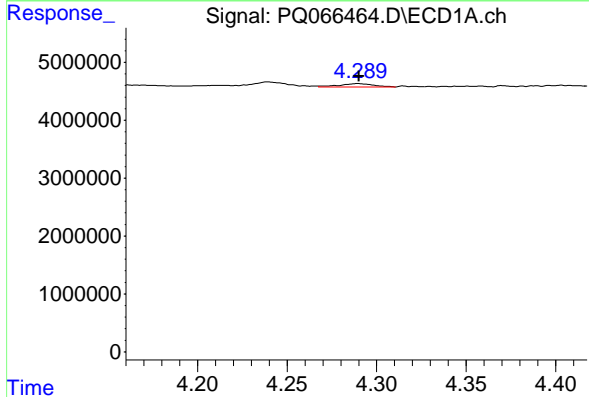
R.T.: 3.792 min
 Delta R.T.: 0.000 min
 Response: 7205052
 Conc: 71.34 ng/ml

Instrument : ECD_Q
 ClientSampleId : LOQ-WATER-02-QT2-2024



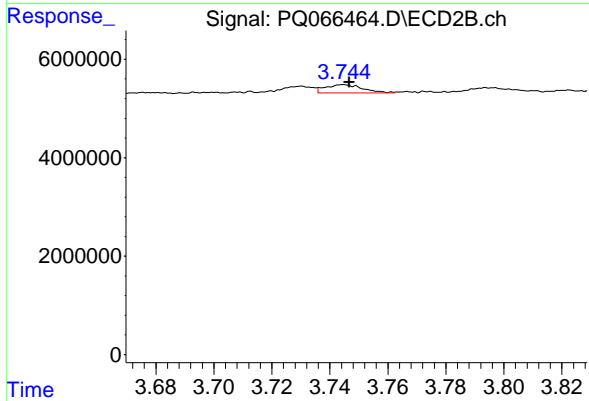
#11 AR-1232-1

R.T.: 3.077 min
 Delta R.T.: -0.001 min
 Response: 10950778
 Conc: 71.15 ng/ml



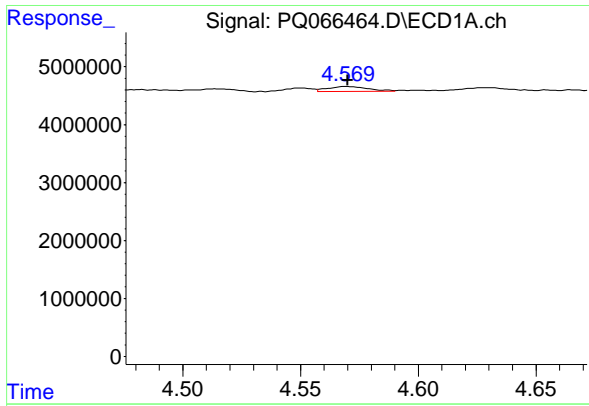
#12 AR-1232-2

R.T.: 4.290 min
 Delta R.T.: 0.000 min
 Response: 758218
 Conc: 13.75 ng/ml



#12 AR-1232-2

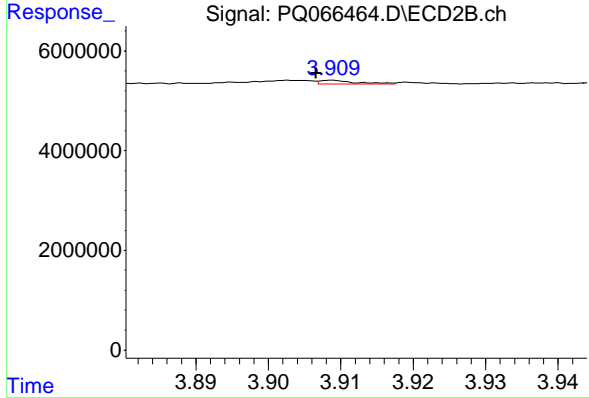
R.T.: 3.745 min
 Delta R.T.: -0.002 min
 Response: 1508531
 Conc: 9.36 ng/ml



#13 AR-1232-3

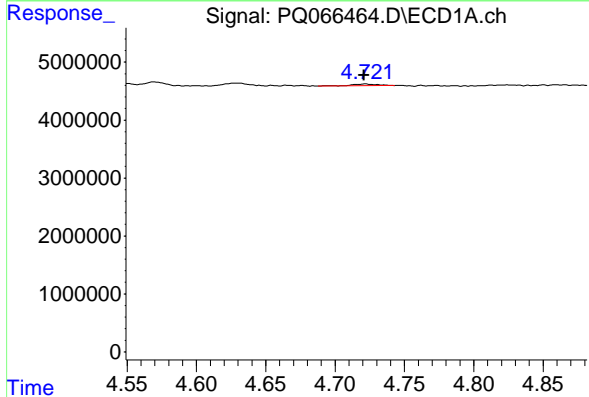
R.T.: 4.570 min
 Delta R.T.: 0.000 min
 Response: 1045777
 Conc: 10.85 ng/ml

Instrument : ECD_Q
 ClientSampleId : LOQ-WATER-02-QT2-2024



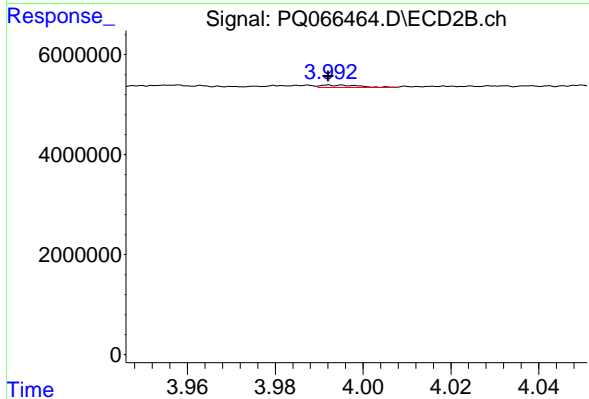
#13 AR-1232-3

R.T.: 3.909 min
 Delta R.T.: 0.002 min
 Response: 269417
 Conc: 3.06 ng/ml



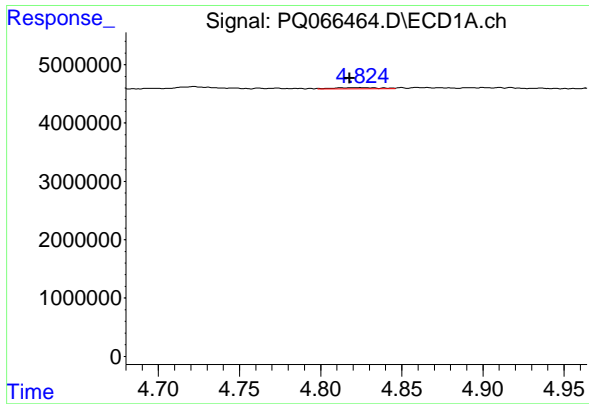
#14 AR-1232-4

R.T.: 4.722 min
 Delta R.T.: 0.000 min
 Response: 419403
 Conc: 8.86 ng/ml



#14 AR-1232-4

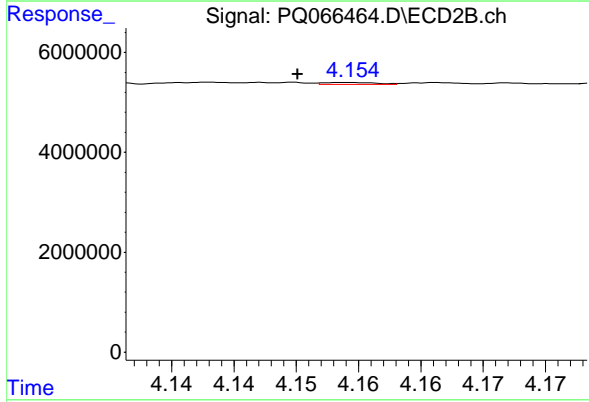
R.T.: 3.992 min
 Delta R.T.: 0.000 min
 Response: 276269
 Conc: 3.67 ng/ml



#15 AR-1232-5

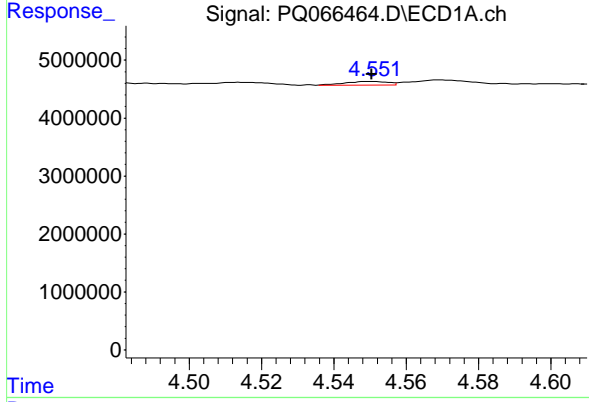
R.T.: 4.825 min
 Delta R.T.: 0.007 min
 Response: 395670
 Conc: 11.88 ng/ml

Instrument : ECD_Q
 ClientSampleId : LOQ-WATER-02-QT2-2024



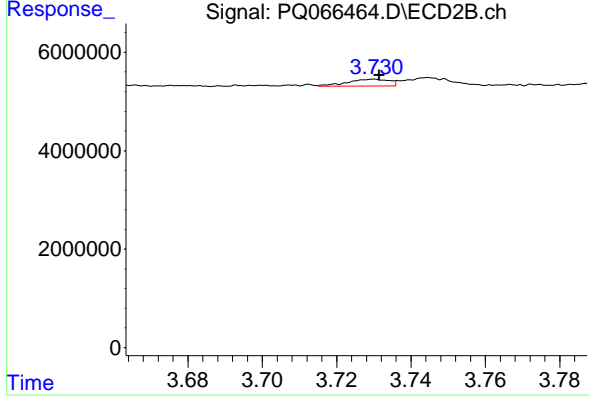
#15 AR-1232-5

R.T.: 4.154 min
 Delta R.T.: 0.004 min
 Response: 114435
 Conc: 1.36 ng/ml



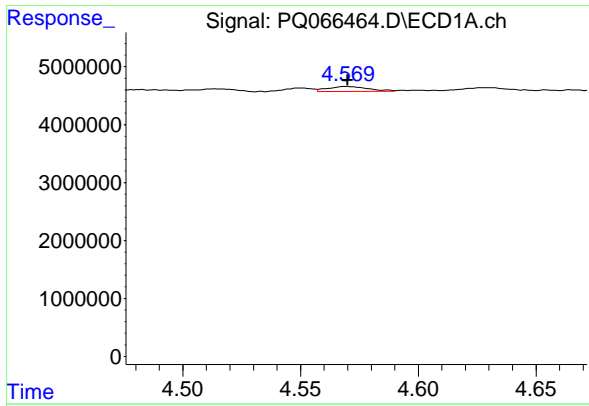
#16 AR-1242-1

R.T.: 4.550 min
 Delta R.T.: 0.000 min
 Response: 508994
 Conc: 4.59 ng/ml



#16 AR-1242-1

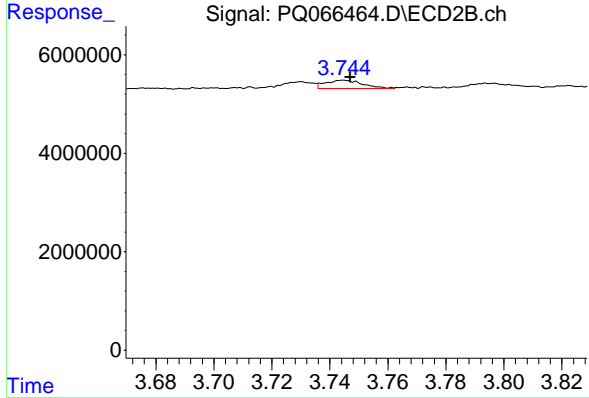
R.T.: 3.730 min
 Delta R.T.: -0.001 min
 Response: 1058411
 Conc: 5.34 ng/ml



#17 AR-1242-2

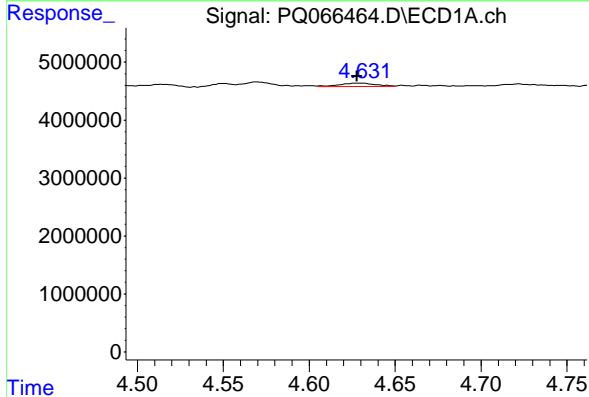
R.T.: 4.570 min
 Delta R.T.: 0.000 min
 Response: 1045777
 Conc: 6.19 ng/ml

Instrument : ECD_Q
 ClientSampleId : LOQ-WATER-02-QT2-2024



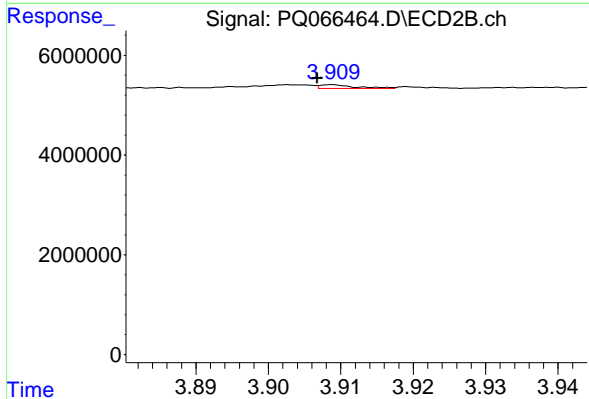
#17 AR-1242-2

R.T.: 3.745 min
 Delta R.T.: -0.002 min
 Response: 1508531
 Conc: 5.33 ng/ml



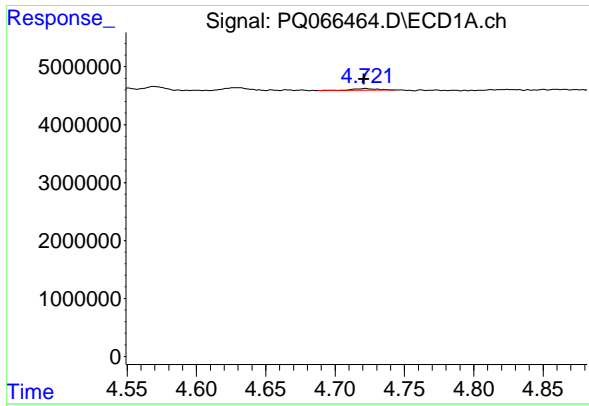
#18 AR-1242-3

R.T.: 4.630 min
 Delta R.T.: 0.003 min
 Response: 883740
 Conc: 8.35 ng/ml



#18 AR-1242-3

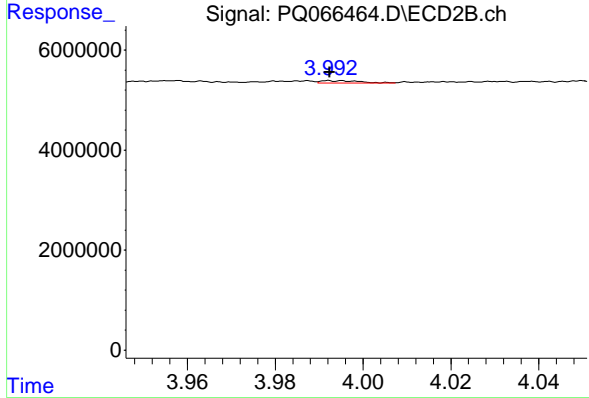
R.T.: 3.909 min
 Delta R.T.: 0.002 min
 Response: 269417
 Conc: 1.72 ng/ml



#19 AR-1242-4

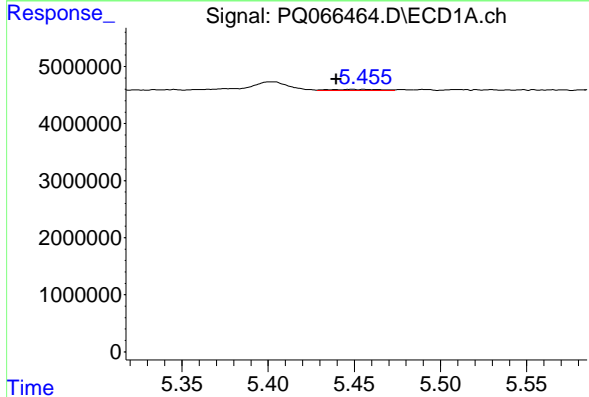
R.T.: 4.722 min
 Delta R.T.: 0.001 min
 Response: 419403
 Conc: 5.03 ng/ml

Instrument :
 ECD_Q
 ClientSampleId :
 LOQ-WATER-02-QT2-2024



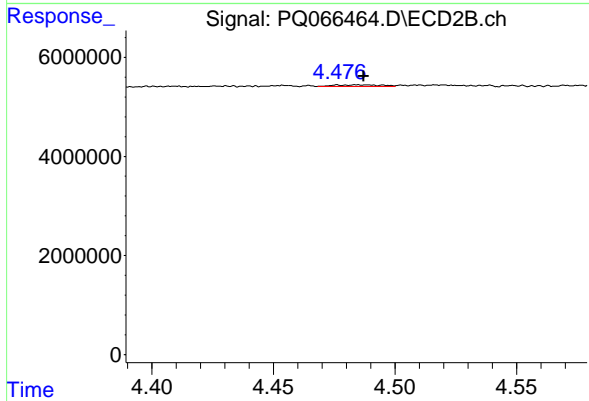
#19 AR-1242-4

R.T.: 3.992 min
 Delta R.T.: 0.000 min
 Response: 276269
 Conc: 1.88 ng/ml



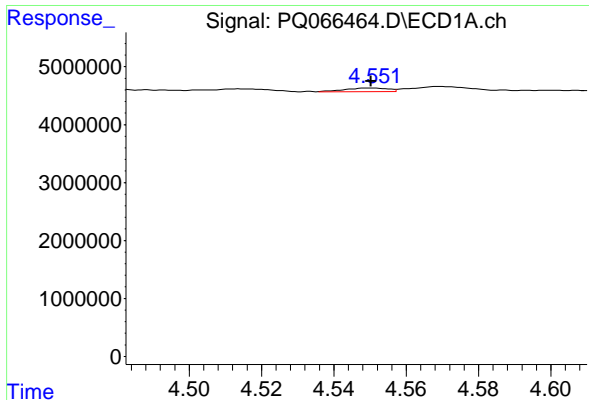
#20 AR-1242-5

R.T.: 5.449 min
 Delta R.T.: 0.009 min
 Response: 378235
 Conc: 4.28 ng/ml



#20 AR-1242-5

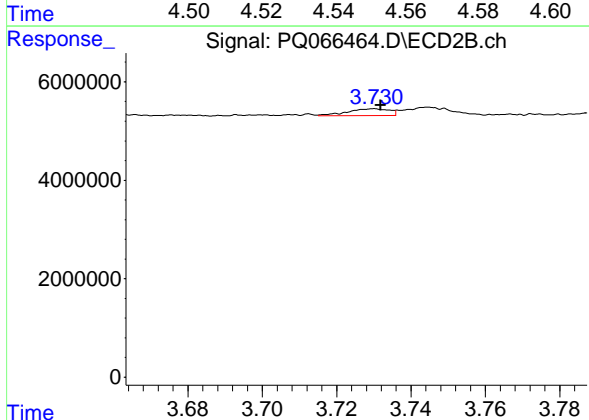
R.T.: 4.485 min
 Delta R.T.: -0.002 min
 Response: 490272
 Conc: 2.55 ng/ml



#21 AR-1248-1

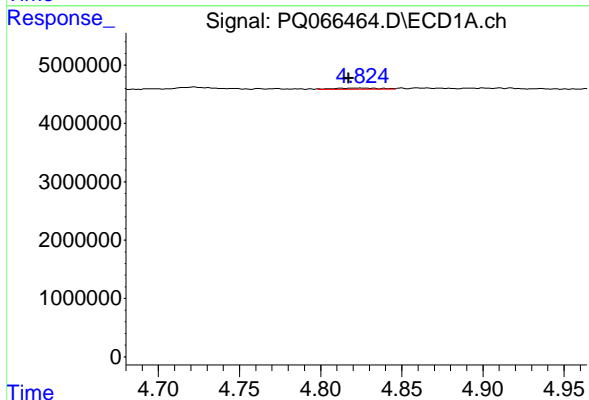
R.T.: 4.550 min
 Delta R.T.: 0.000 min
 Response: 508994
 Conc: 6.30 ng/ml

Instrument : ECD_Q
 ClientSampleId : LOQ-WATER-02-QT2-2024



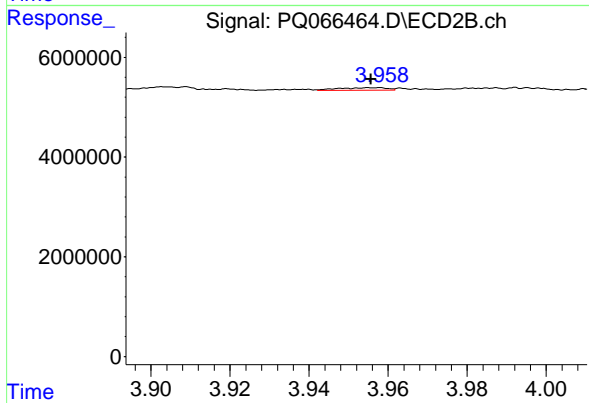
#21 AR-1248-1

R.T.: 3.730 min
 Delta R.T.: -0.002 min
 Response: 1058411
 Conc: 7.11 ng/ml



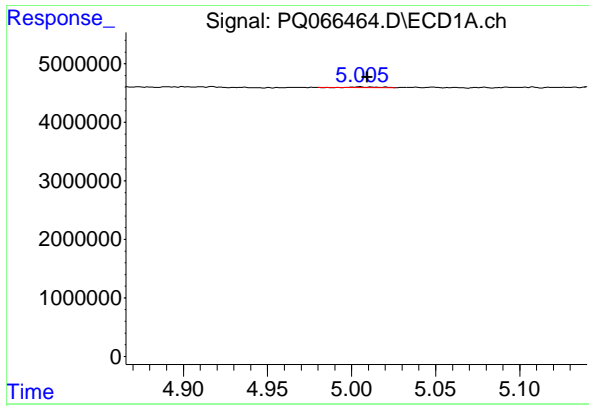
#22 AR-1248-2

R.T.: 4.825 min
 Delta R.T.: 0.007 min
 Response: 395670
 Conc: 3.43 ng/ml



#22 AR-1248-2

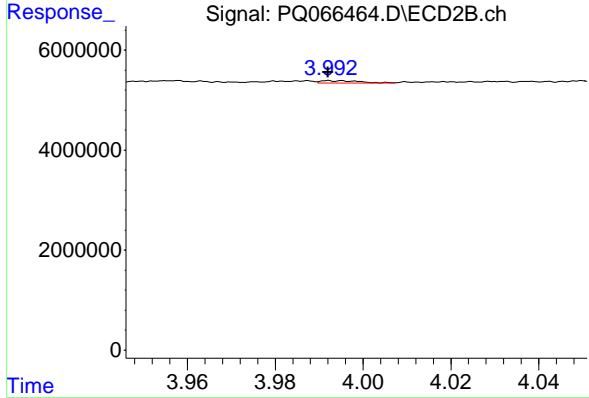
R.T.: 3.958 min
 Delta R.T.: 0.002 min
 Response: 433356
 Conc: 1.96 ng/ml



#23 AR-1248-3

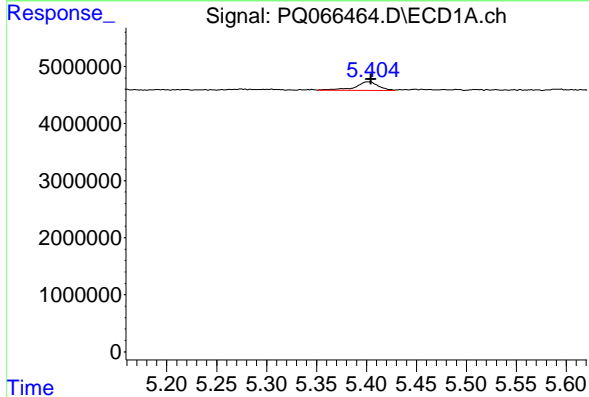
R.T.: 5.005 min
 Delta R.T.: -0.005 min
 Response: 117935
 Conc: 0.86 ng/ml

Instrument : ECD_Q
 ClientSampleId : LOQ-WATER-02-QT2-2024



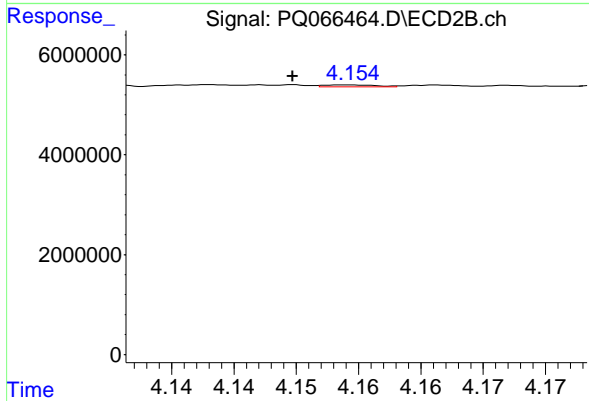
#23 AR-1248-3

R.T.: 3.992 min
 Delta R.T.: 0.000 min
 Response: 276269
 Conc: 1.31 ng/ml



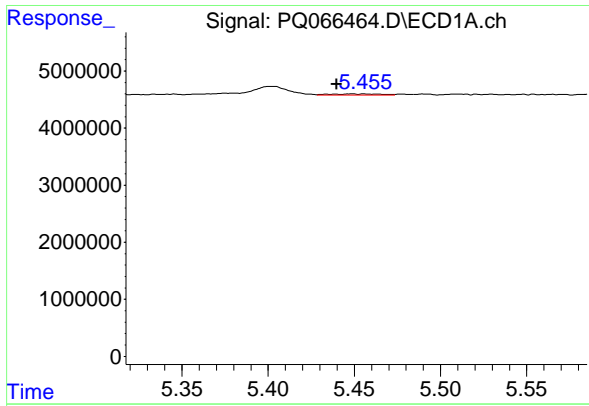
#24 AR-1248-4

R.T.: 5.402 min
 Delta R.T.: -0.002 min
 Response: 2467041
 Conc: 17.12 ng/ml



#24 AR-1248-4

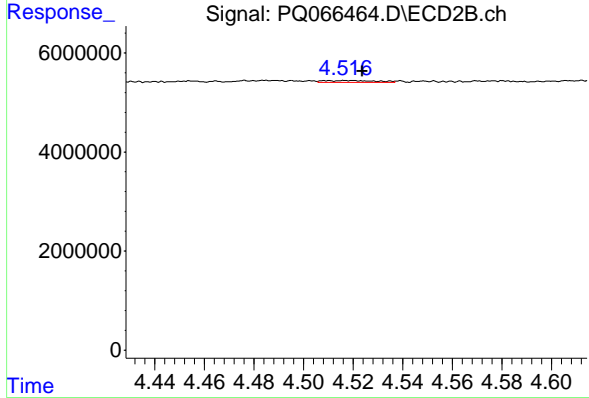
R.T.: 4.154 min
 Delta R.T.: 0.005 min
 Response: 114435
 Conc: 0.44 ng/ml



#25 AR-1248-5

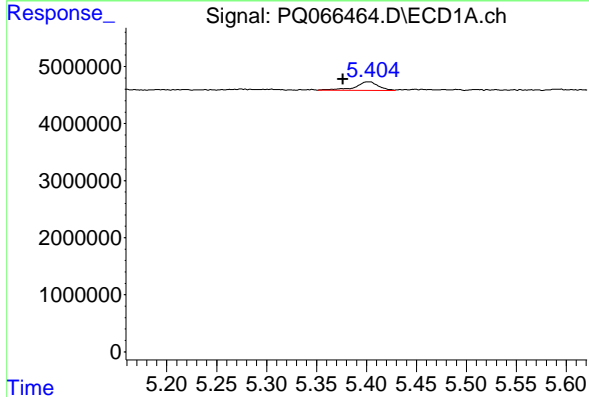
R.T.: 5.449 min
 Delta R.T.: 0.009 min
 Response: 378235
 Conc: 2.59 ng/ml

Instrument :
 ECD_Q
 ClientSampleId :
 LOQ-WATER-02-QT2-2024



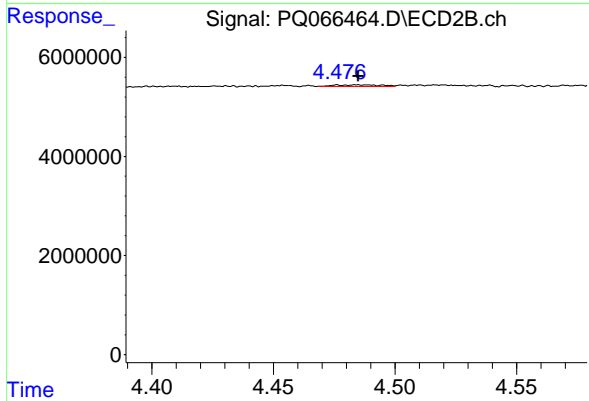
#25 AR-1248-5

R.T.: 4.510 min
 Delta R.T.: -0.013 min
 Response: 508720
 Conc: 1.97 ng/ml



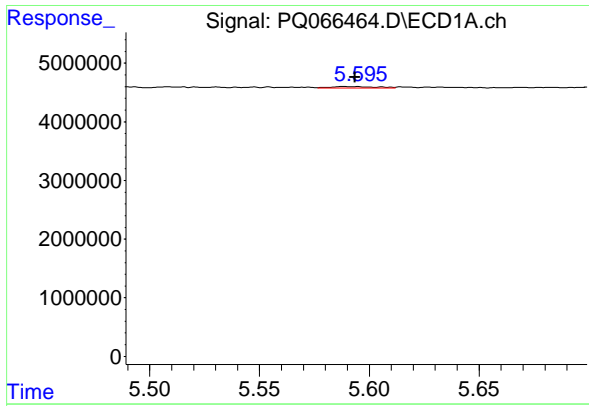
#26 AR-1254-1

R.T.: 5.402 min
 Delta R.T.: 0.026 min
 Response: 2467041
 Conc: 16.42 ng/ml



#26 AR-1254-1

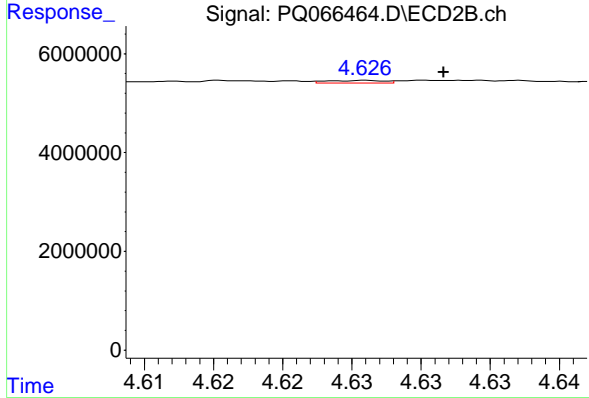
R.T.: 4.485 min
 Delta R.T.: 0.000 min
 Response: 490272
 Conc: 1.25 ng/ml



#27 AR-1254-2

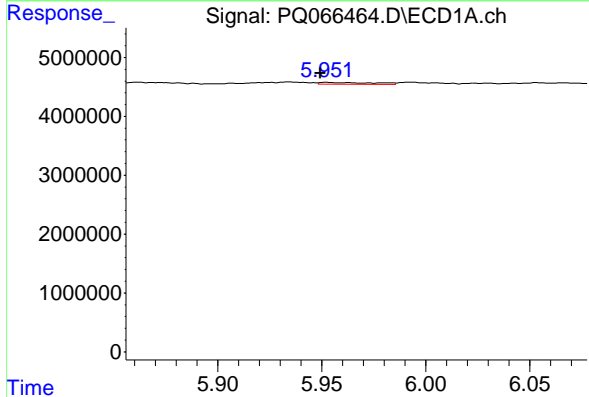
R.T.: 5.589 min
 Delta R.T.: -0.004 min
 Response: 381649
 Conc: 1.62 ng/ml

Instrument : ECD_Q
 ClientSampleId : LOQ-WATER-02-QT2-2024



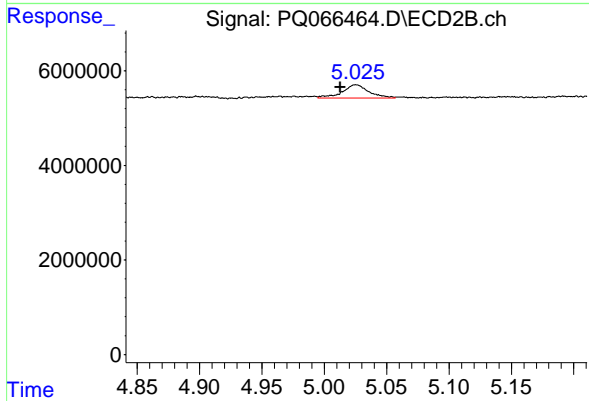
#27 AR-1254-2

R.T.: 4.626 min
 Delta R.T.: -0.005 min
 Response: 144915
 Conc: 0.43 ng/ml



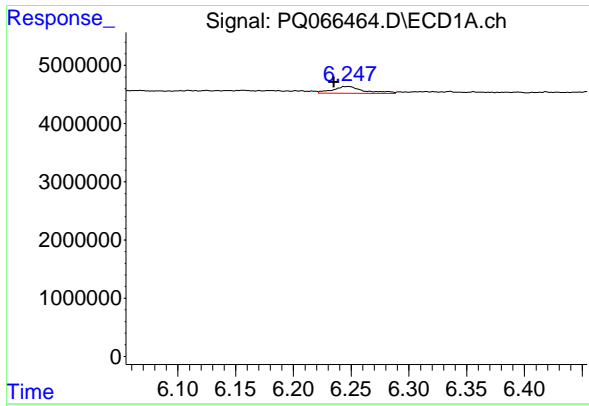
#28 AR-1254-3

R.T.: 5.952 min
 Delta R.T.: 0.003 min
 Response: 572014
 Conc: 2.33 ng/ml



#28 AR-1254-3

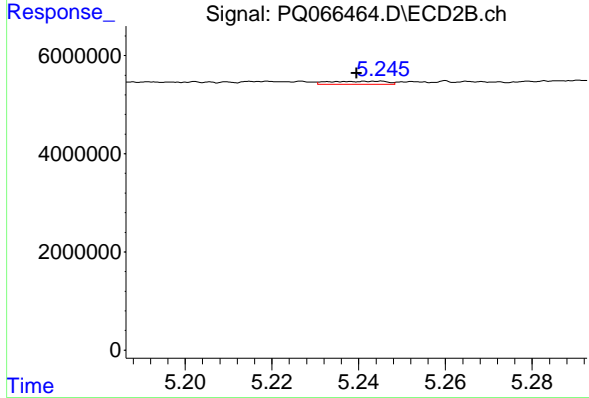
R.T.: 5.025 min
 Delta R.T.: 0.013 min
 Response: 4210039
 Conc: 7.80 ng/ml



#29 AR-1254-4

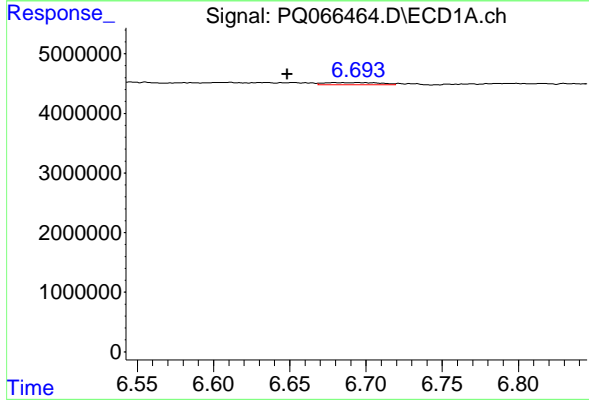
R.T.: 6.247 min
 Delta R.T.: 0.012 min
 Response: 2308731
 Conc: 13.26 ng/ml

Instrument : ECD_Q
 ClientSampleId : LOQ-WATER-02-QT2-2024



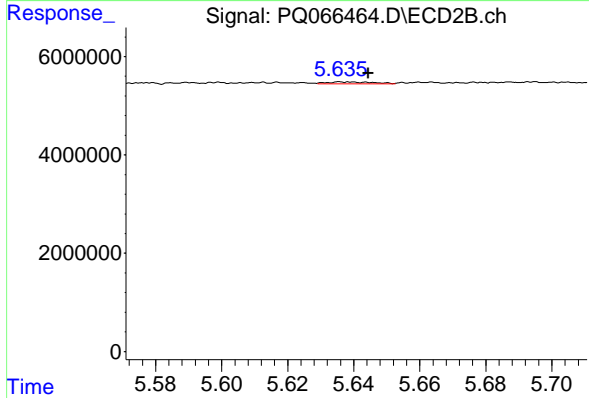
#29 AR-1254-4

R.T.: 5.244 min
 Delta R.T.: 0.004 min
 Response: 574281
 Conc: 1.55 ng/ml



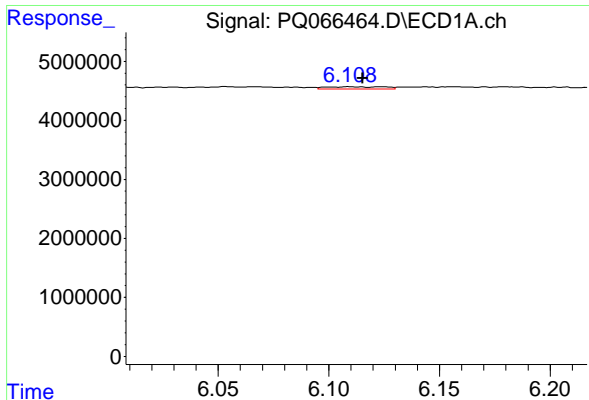
#30 AR-1254-5

R.T.: 6.679 min
 Delta R.T.: 0.031 min
 Response: 928480
 Conc: 5.06 ng/ml



#30 AR-1254-5

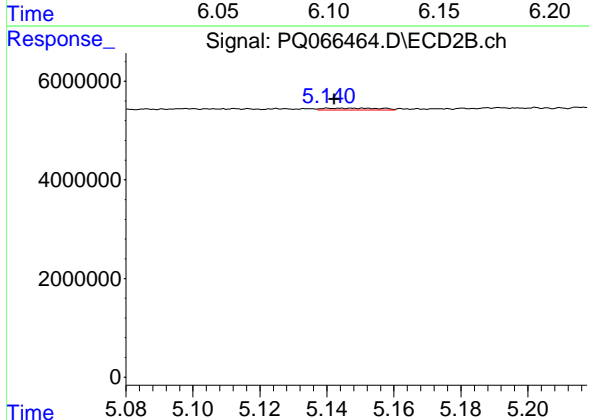
R.T.: 5.637 min
 Delta R.T.: -0.008 min
 Response: 359883
 Conc: 0.74 ng/ml



#31 AR-1260-1

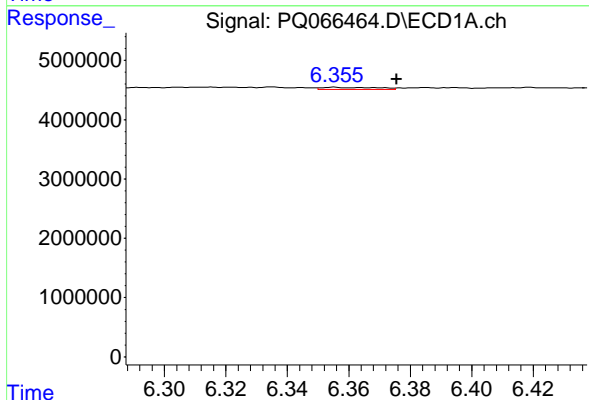
R.T.: 6.109 min
 Delta R.T.: -0.006 min
 Response: 700575
 Conc: 3.87 ng/ml

Instrument : ECD_Q
 ClientSampleId : LOQ-WATER-02-QT2-2024



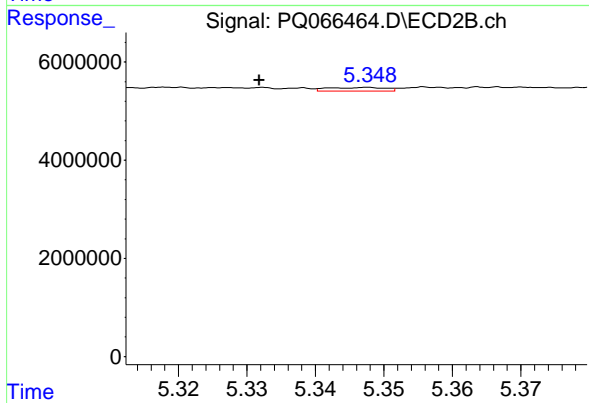
#31 AR-1260-1

R.T.: 5.140 min
 Delta R.T.: -0.002 min
 Response: 421146
 Conc: 1.08 ng/ml



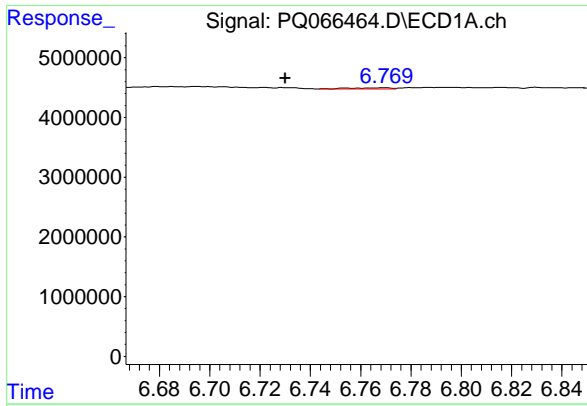
#32 AR-1260-2

R.T.: 6.356 min
 Delta R.T.: -0.020 min
 Response: 461234
 Conc: 2.18 ng/ml



#32 AR-1260-2

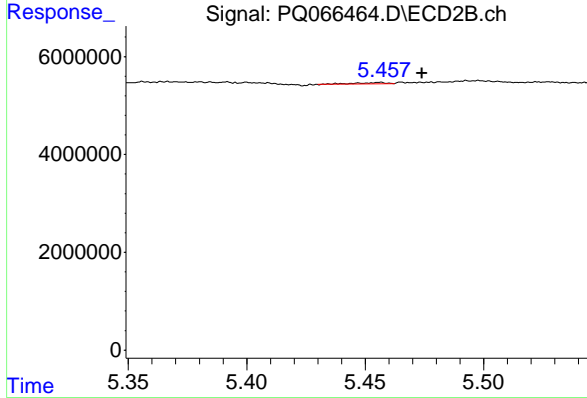
R.T.: 5.348 min
 Delta R.T.: 0.016 min
 Response: 421719
 Conc: 0.88 ng/ml



#33 AR-1260-3

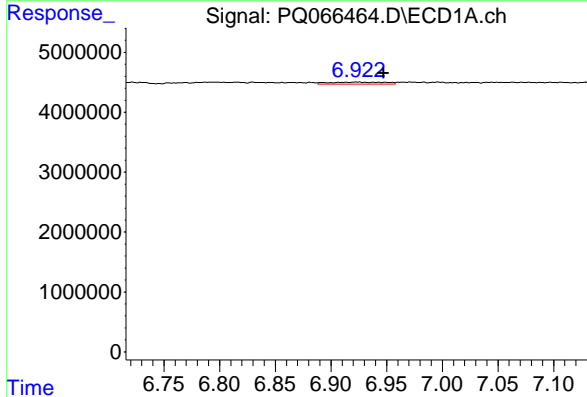
R.T.: 6.769 min
 Delta R.T.: 0.039 min
 Response: 239078
 Conc: 1.55 ng/ml

Instrument :
 ECD_Q
 ClientSampleId :
 LOQ-WATER-02-QT2-2024



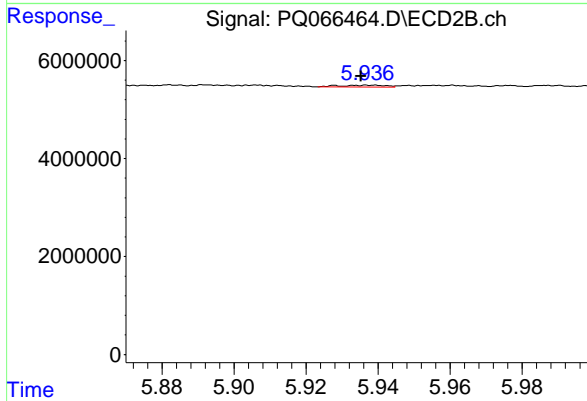
#33 AR-1260-3

R.T.: 5.456 min
 Delta R.T.: -0.018 min
 Response: 256341
 Conc: 0.58 ng/ml



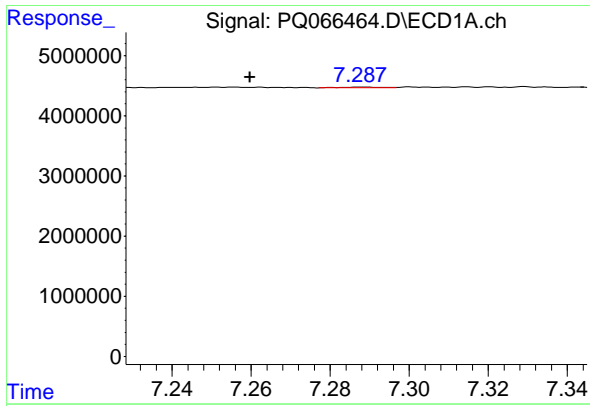
#34 AR-1260-4

R.T.: 6.924 min
 Delta R.T.: -0.024 min
 Response: 1102699
 Conc: 6.34 ng/ml



#34 AR-1260-4

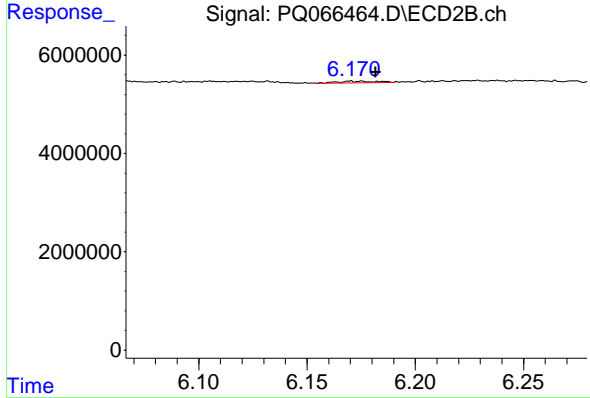
R.T.: 5.928 min
 Delta R.T.: -0.007 min
 Response: 336407
 Conc: 0.88 ng/ml



#35 AR-1260-5

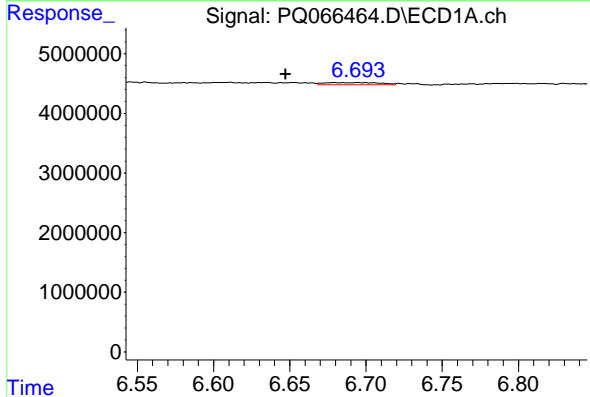
R.T.: 7.288 min
 Delta R.T.: 0.028 min
 Response: 94922
 Conc: 0.29 ng/ml

Instrument : ECD_Q
 ClientSampleId : LOQ-WATER-02-QT2-2024



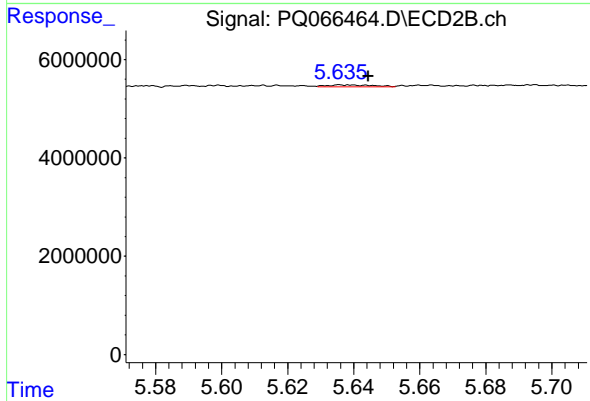
#35 AR-1260-5

R.T.: 6.175 min
 Delta R.T.: -0.007 min
 Response: 402406
 Conc: 0.49 ng/ml



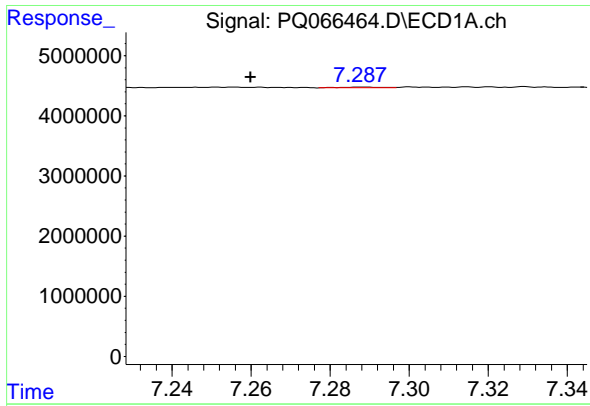
#36 AR-1262-1

R.T.: 6.679 min
 Delta R.T.: 0.032 min
 Response: 928480
 Conc: 6.32 ng/ml



#36 AR-1262-1

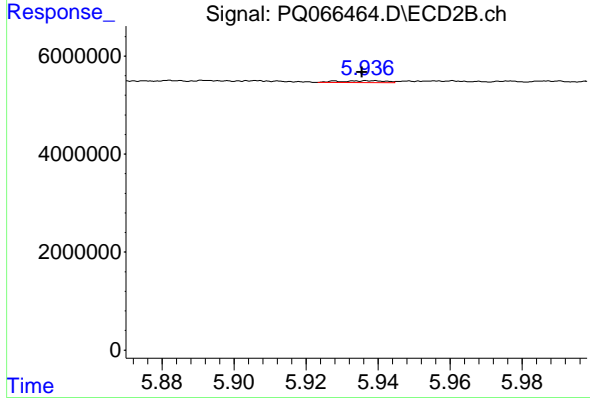
R.T.: 5.637 min
 Delta R.T.: -0.008 min
 Response: 359883
 Conc: 1.29 ng/ml



#37 AR-1262-2

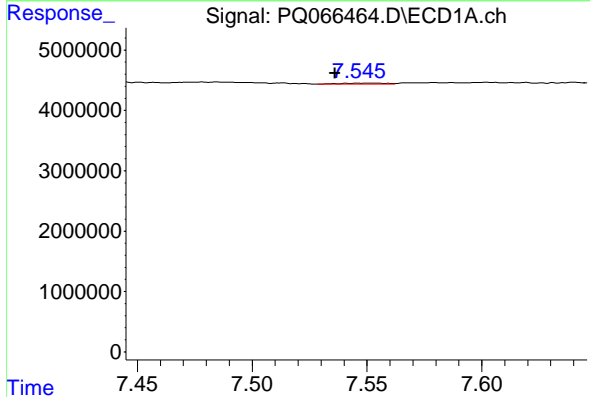
R.T.: 7.288 min
 Delta R.T.: 0.028 min
 Response: 94922
 Conc: 0.26 ng/ml

Instrument : ECD_Q
 ClientSampleId : LOQ-WATER-02-QT2-2024



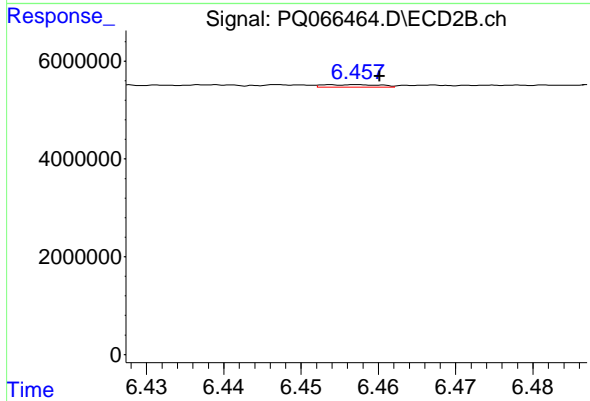
#37 AR-1262-2

R.T.: 5.928 min
 Delta R.T.: -0.007 min
 Response: 336407
 Conc: 0.71 ng/ml



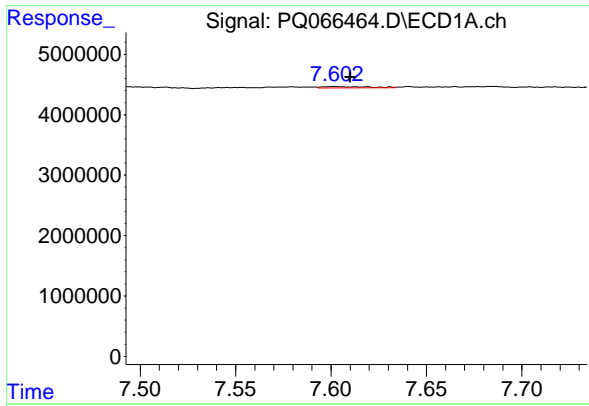
#38 AR-1262-3

R.T.: 7.553 min
 Delta R.T.: 0.017 min
 Response: 217739
 Conc: 0.90 ng/ml



#38 AR-1262-3

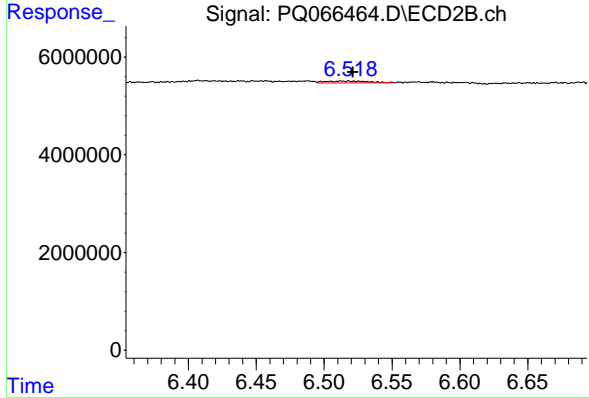
R.T.: 6.457 min
 Delta R.T.: -0.003 min
 Response: 243362
 Conc: 0.64 ng/ml



#39 AR-1262-4

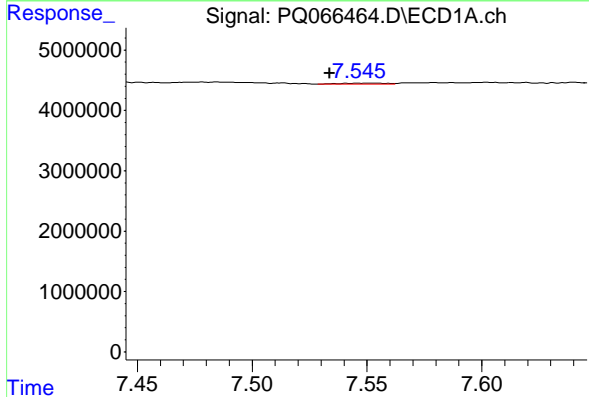
R.T.: 7.602 min
 Delta R.T.: -0.008 min
 Response: 373525
 Conc: 2.01 ng/ml

Instrument : ECD_Q
 ClientSampleId : LOQ-WATER-02-QT2-2024



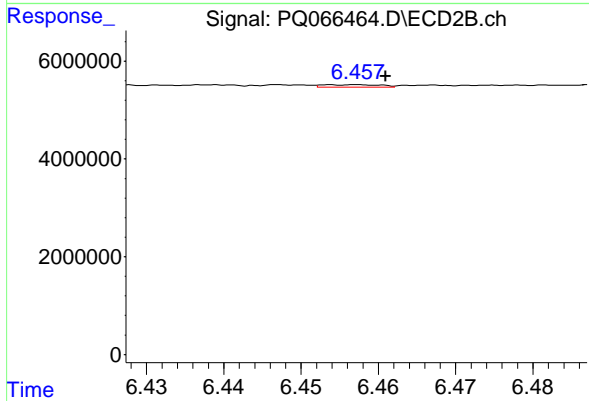
#39 AR-1262-4

R.T.: 6.512 min
 Delta R.T.: -0.009 min
 Response: 732159
 Conc: 1.05 ng/ml



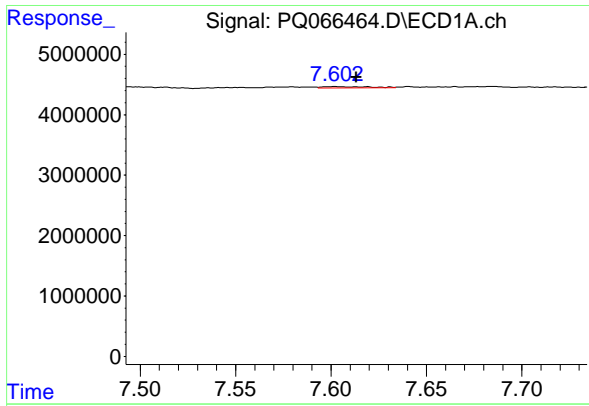
#41 AR-1268-1

R.T.: 7.553 min
 Delta R.T.: 0.019 min
 Response: 217739
 Conc: 0.52 ng/ml



#41 AR-1268-1

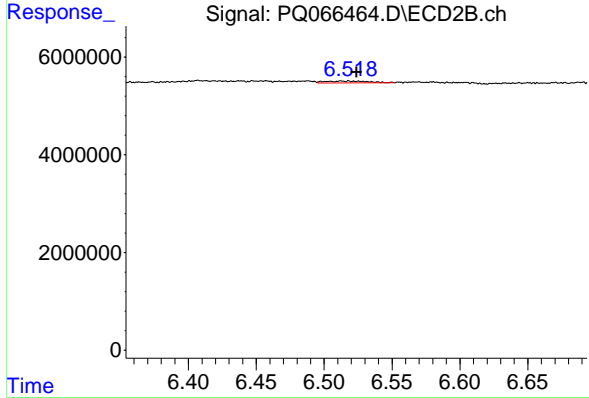
R.T.: 6.457 min
 Delta R.T.: -0.004 min
 Response: 243362
 Conc: 0.22 ng/ml



#42 AR-1268-2

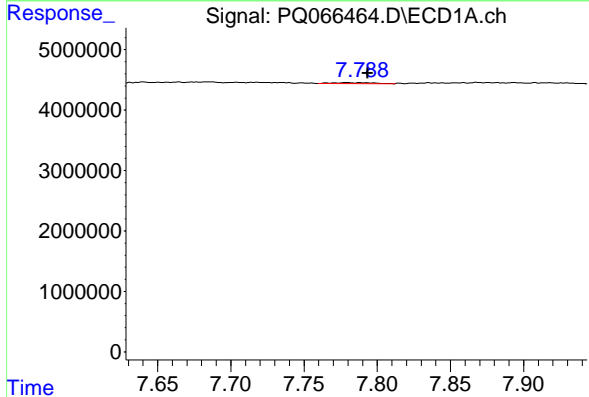
R.T.: 7.602 min
 Delta R.T.: -0.011 min
 Response: 373525
 Conc: 0.96 ng/ml

Instrument : ECD_Q
 ClientSampleId : LOQ-WATER-02-QT2-2024



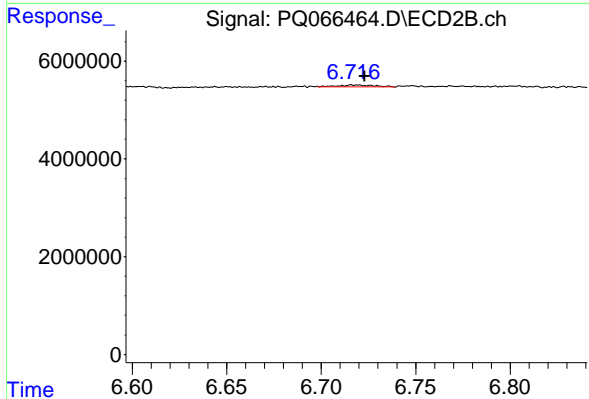
#42 AR-1268-2

R.T.: 6.512 min
 Delta R.T.: -0.012 min
 Response: 732159
 Conc: 0.72 ng/ml



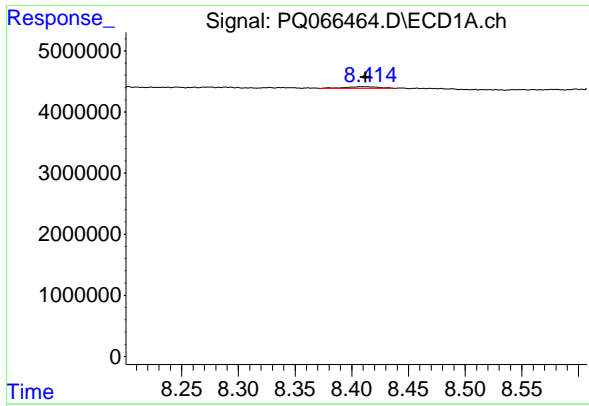
#43 AR-1268-3

R.T.: 7.779 min
 Delta R.T.: -0.014 min
 Response: 335167
 Conc: 1.04 ng/ml



#43 AR-1268-3

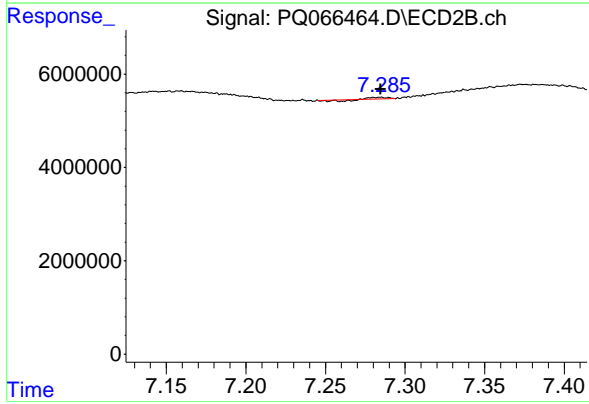
R.T.: 6.718 min
 Delta R.T.: -0.005 min
 Response: 515306
 Conc: 0.58 ng/ml



#45 AR-1268-5

R.T.: 8.408 min
 Delta R.T.: -0.005 min
 Response: 529460
 Conc: 0.56 ng/ml

Instrument :
 ECD_Q
 ClientSampleId :
 LOQ-WATER-02-QT2-2024



#45 AR-1268-5

R.T.: 7.285 min
 Delta R.T.: 0.000 min
 Response: 79642
 Conc: 0.03 ng/ml