

Data Path : Z:\pestpcbsrv\HPCHEM1\ECD_Q\Data\PQ050924\
 Data File : PQ066430.D
 Signal(s) : Signal #1: ECD1A.ch Signal #2: ECD2B.ch
 Acq On : 09 May 2024 16:05
 Operator : YP\AJ
 Sample : I.BLK
 Misc :
 ALS Vial : 2 Sample Multiplier: 1

Instrument :
 ECD_Q
 ClientSampleId :
 I.BLK

Integration File signal 1: autoint1.e
 Integration File signal 2: autoint2.e
 Quant Time: May 10 01:10:56 2024
 Quant Method : Z:\pestpcbsrv\HPCHEM1\ECD_Q\Method\PQ042324.M
 Quant Title : GC EXTRACTABLES
 QLast Update : Wed Apr 24 04:24:21 2024
 Response via : Initial Calibration
 Integrator: ChemStation

Volume Inj. : 2 µl
 Signal #1 Phase : ZB-MR1 Signal #2 Phase: ZB-MR2
 Signal #1 Info : 30Mx0.32mmx 0.50µ Signal #2 Info : 30M x 0.32mm x 0.25µm

Compound	RT#1	RT#2	Resp#1	Resp#2	ng/ml	ng/ml

System Monitoring Compounds						
1) SA Tetrachlo...	3.440	2.733	90139887	135.5E6	20.735	21.184
2) SA Decachlor...	8.650	7.497	55683262	148.4E6	22.624	23.581

Target Compounds

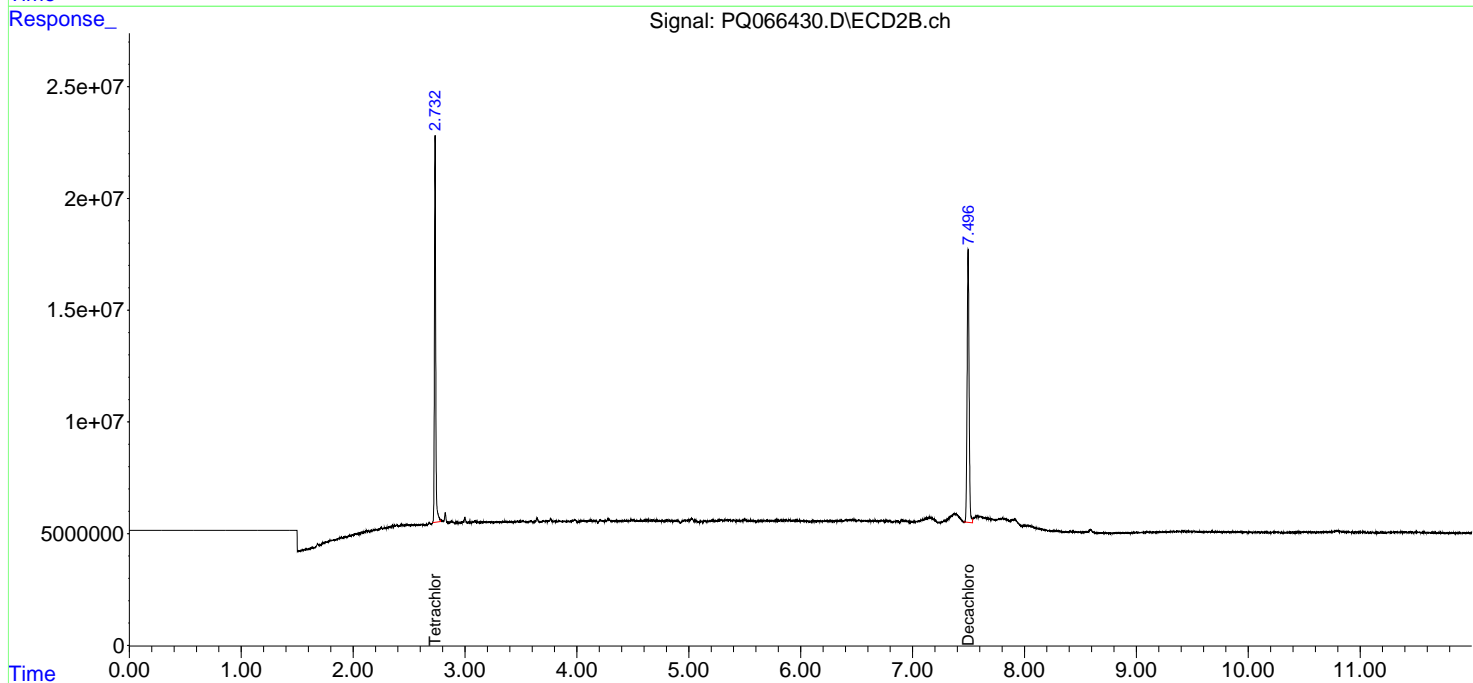
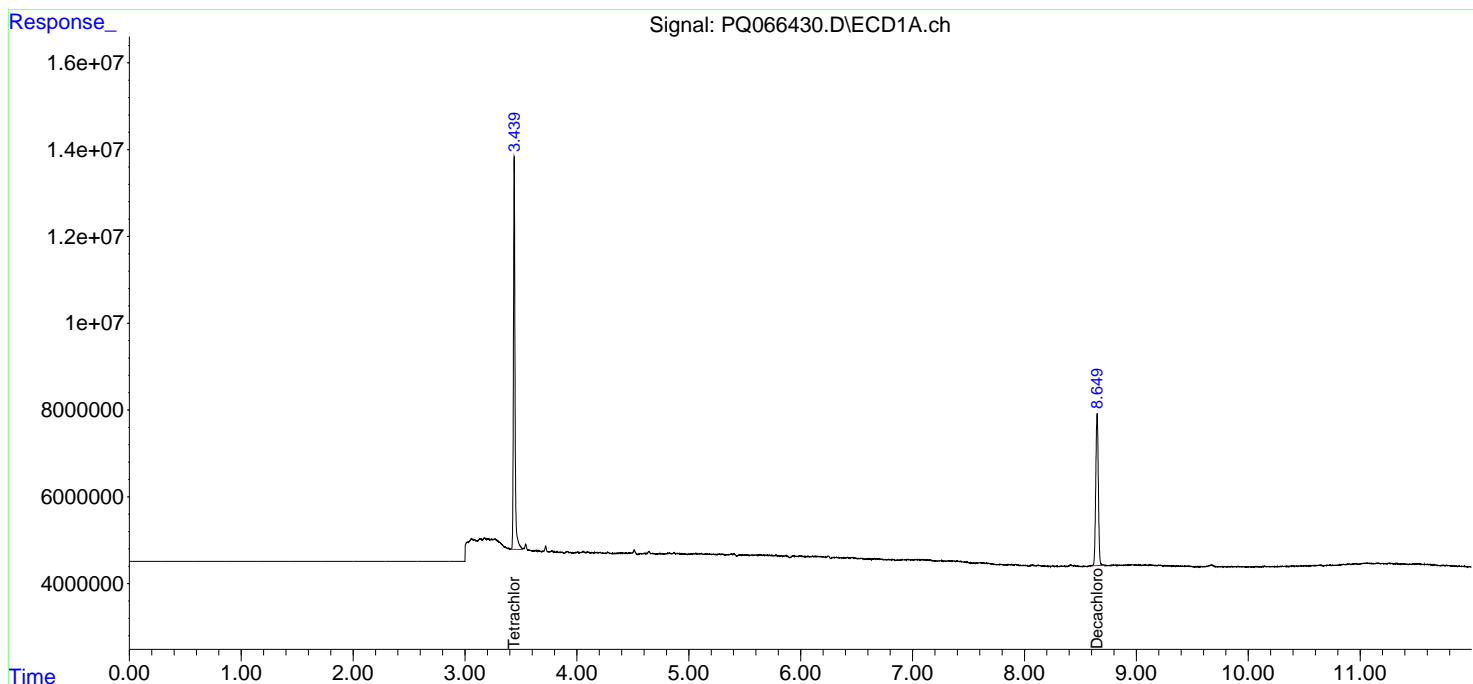
(f)=RT Delta > 1/2 Window (#)=Amounts differ by > 25% (m)=manual int.

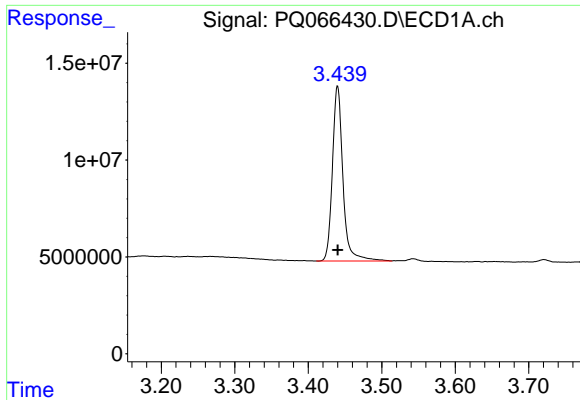
Data Path : Z:\pestpcbsrv\HPCHEM1\ECD_Q\Data\PQ050924\
 Data File : PQ066430.D
 Signal(s) : Signal #1: ECD1A.ch Signal #2: ECD2B.ch
 Acq On : 09 May 2024 16:05
 Operator : YP\AJ
 Sample : I.BLK
 Misc :
 ALS Vial : 2 Sample Multiplier: 1

Instrument :
 ECD_Q
 ClientSampleId :
 I.BLK

Integration File signal 1: autoint1.e
 Integration File signal 2: autoint2.e
 Quant Time: May 10 01:10:56 2024
 Quant Method : Z:\pestpcbsrv\HPCHEM1\ECD_Q\Method\PQ042324.M
 Quant Title : GC EXTRACTABLES
 QLast Update : Wed Apr 24 04:24:21 2024
 Response via : Initial Calibration
 Integrator: ChemStation

Volume Inj. : 2 µl
 Signal #1 Phase : ZB-MR1 Signal #2 Phase: ZB-MR2
 Signal #1 Info : 30Mx0.32mmx 0.50µ Signal #2 Info : 30M x 0.32mm x 0.25µm

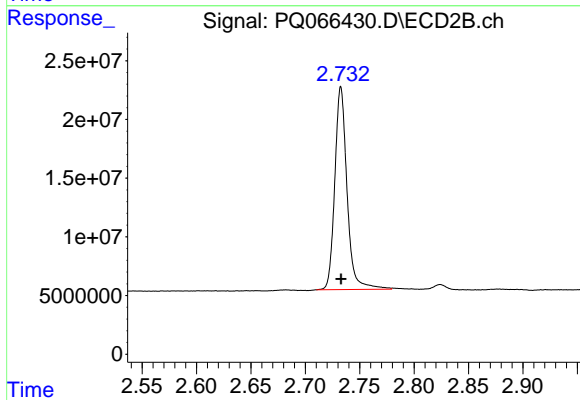




#1 Tetrachloro-m-xylene

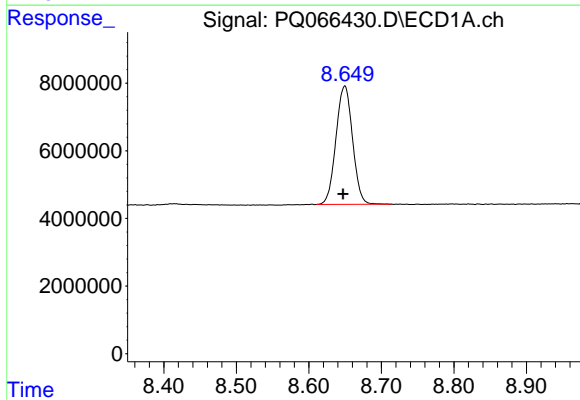
R.T.: 3.440 min
 Delta R.T.: 0.000 min
 Response: 90139887
 Conc: 20.73 ng/ml

Instrument :
 ECD_Q
 ClientSampleId :
 I.BLK



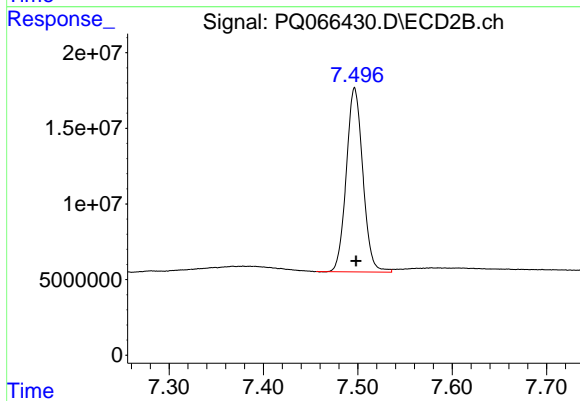
#1 Tetrachloro-m-xylene

R.T.: 2.733 min
 Delta R.T.: 0.000 min
 Response: 135522936
 Conc: 21.18 ng/ml



#2 Decachlorobiphenyl

R.T.: 8.650 min
 Delta R.T.: 0.002 min
 Response: 55683262
 Conc: 22.62 ng/ml



#2 Decachlorobiphenyl

R.T.: 7.497 min
 Delta R.T.: -0.002 min
 Response: 148362224
 Conc: 23.58 ng/ml