

Data Path : Z:\pestpcbsrv\HPCHEM1\ECD_Q\Data\PQ051021\
 Data File : PQ053416.D
 Signal(s) : Signal #1: ECD1A.ch Signal #2: ECD2B.ch
 Acq On : 10 May 2021 15:29
 Operator : DD\AJ
 Sample : I.BLK
 Misc :
 ALS Vial : 2 Sample Multiplier: 1

Integration File signal 1: autoint1.e
 Integration File signal 2: autoint2.e
 Quant Time: May 11 04:46:07 2021
 Quant Method : Z:\pestpcbsrv\HPCHEM1\ECD_Q\Method\PQ051021.M
 Quant Title : GC EXTRACTABLES
 QLast Update : Tue May 11 04:42:25 2021
 Response via : Initial Calibration
 Integrator: ChemStation

Volume Inj. : 2 µl
 Signal #1 Phase : ZB-MR1 Signal #2 Phase: ZB-MR2
 Signal #1 Info : 30Mx0.32mmx 0.50µ Signal #2 Info : 30M x 0.32mm x 0.25µm

Compound	RT#1	RT#2	Resp#1	Resp#2	ng/ml	ng/ml

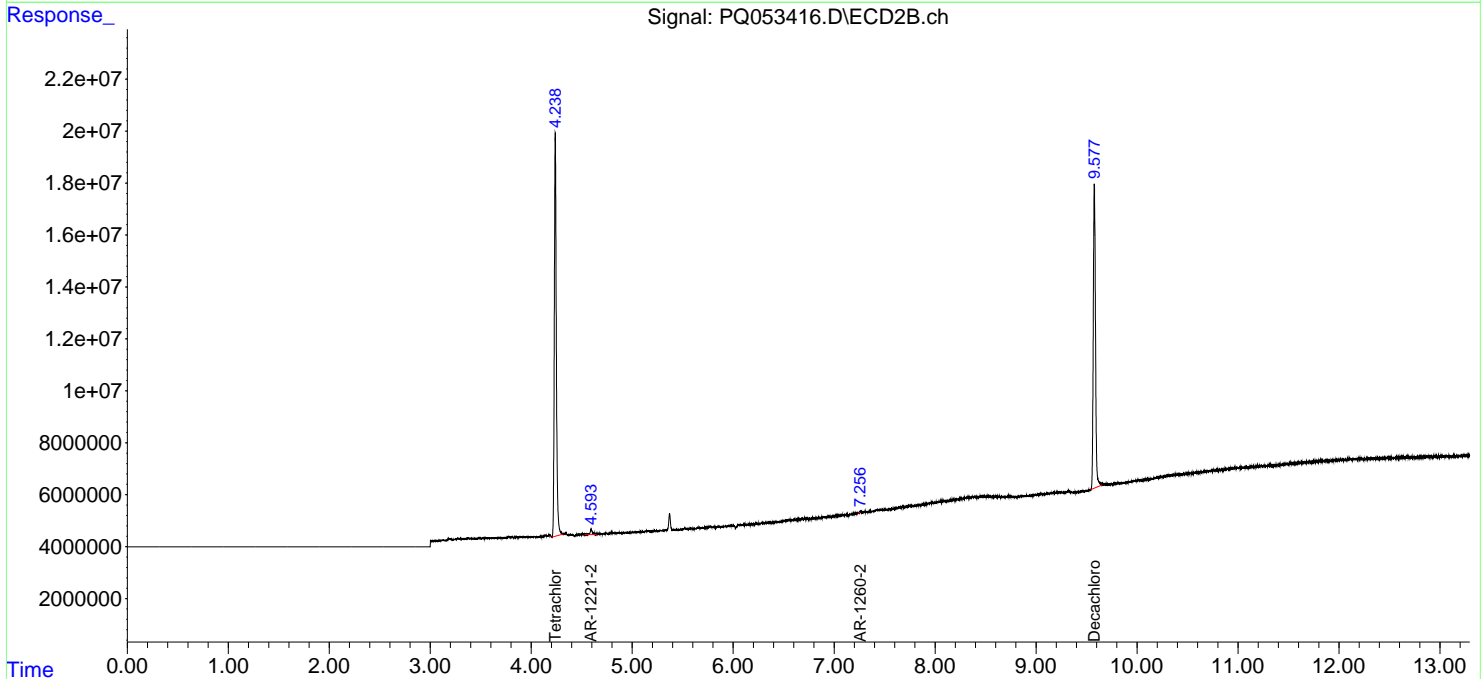
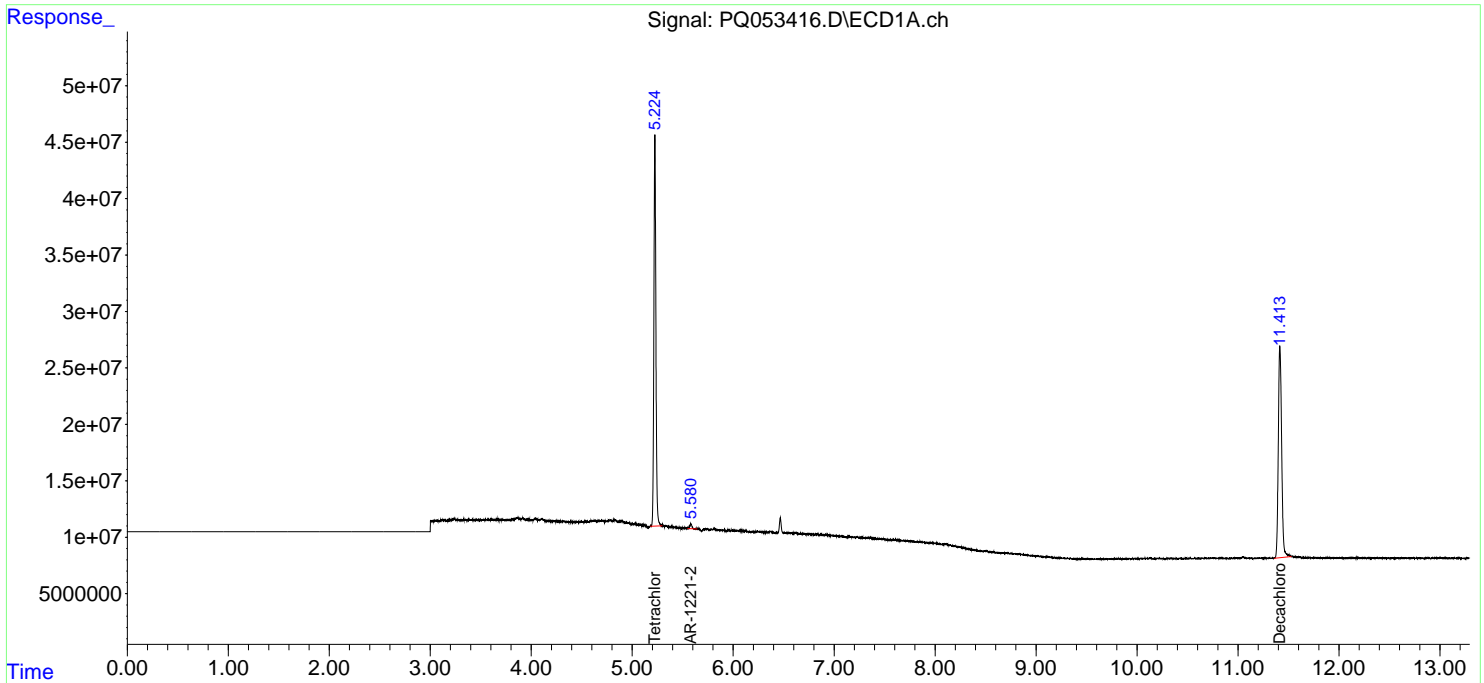
System Monitoring Compounds						
1) SA Tetrachlo...	5.225	4.239	485.6E6	216.3E6	17.310	16.984
2) SA Decachlor...	11.414	9.577	430.7E6	174.2E6	17.594	17.149
Target Compounds						
9) L2 AR-1221-2	5.581	4.594	6207868	3193603	28.921	32.082
32) L7 AR-1260-2	0.000	7.256f	0	140459	N.D.	0.134 #

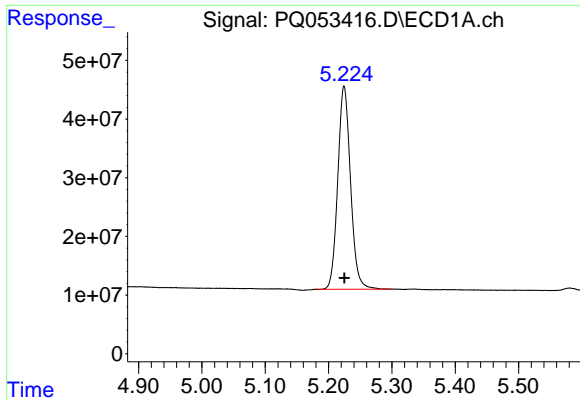
(f)=RT Delta > 1/2 Window (#)=Amounts differ by > 25% (m)=manual int.

Data Path : Z:\pestpcbsrv\HPCHEM1\ECD_Q\Data\PQ051021\
 Data File : PQ053416.D
 Signal(s) : Signal #1: ECD1A.ch Signal #2: ECD2B.ch
 Acq On : 10 May 2021 15:29
 Operator : DD\AJ
 Sample : I.BLK
 Misc :
 ALS Vial : 2 Sample Multiplier: 1

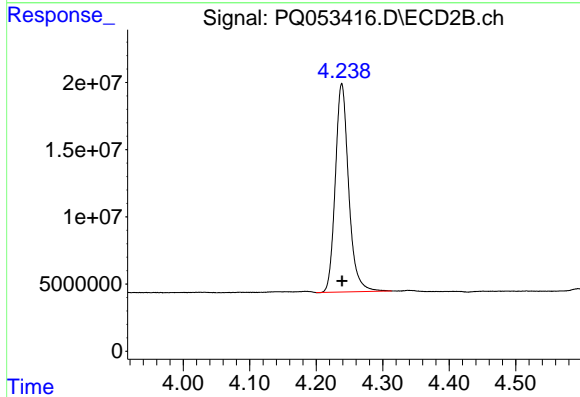
Integration File signal 1: autoint1.e
 Integration File signal 2: autoint2.e
 Quant Time: May 11 04:46:07 2021
 Quant Method : Z:\pestpcbsrv\HPCHEM1\ECD_Q\Method\PQ051021.M
 Quant Title : GC EXTRACTABLES
 QLast Update : Tue May 11 04:42:25 2021
 Response via : Initial Calibration
 Integrator: ChemStation

Volume Inj. : 2 µl
 Signal #1 Phase : ZB-MR1 Signal #2 Phase: ZB-MR2
 Signal #1 Info : 30Mx0.32mmx 0.50µ Signal #2 Info : 30M x 0.32mm x 0.25µm

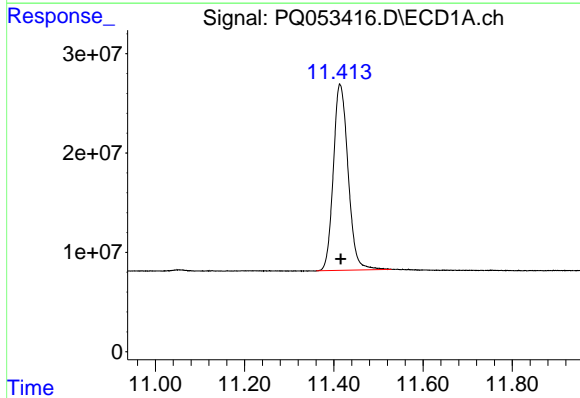




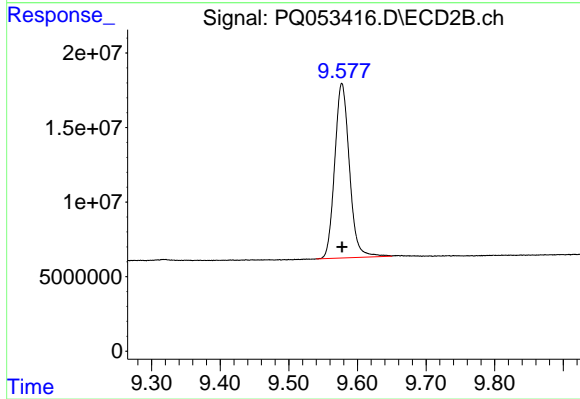
#1 Tetrachloro-m-xylene
R.T.: 5.225 min
Delta R.T.: 0.000 min
Response: 485619176
Conc: 17.31 ng/ml



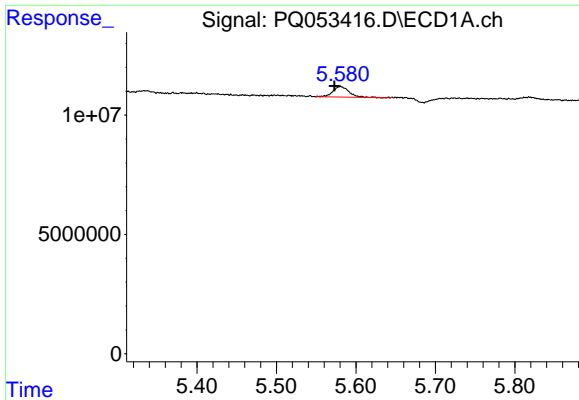
#1 Tetrachloro-m-xylene
R.T.: 4.239 min
Delta R.T.: 0.000 min
Response: 216298346
Conc: 16.98 ng/ml



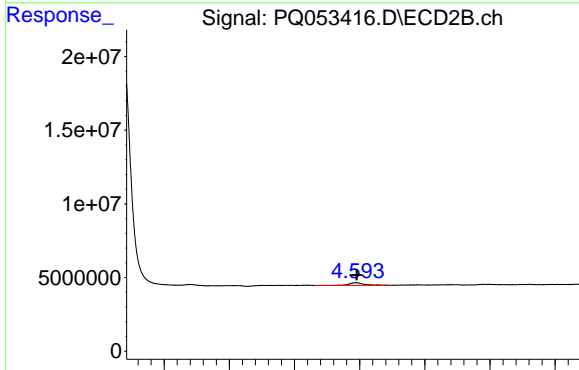
#2 Decachlorobiphenyl
R.T.: 11.414 min
Delta R.T.: -0.002 min
Response: 430665683
Conc: 17.59 ng/ml



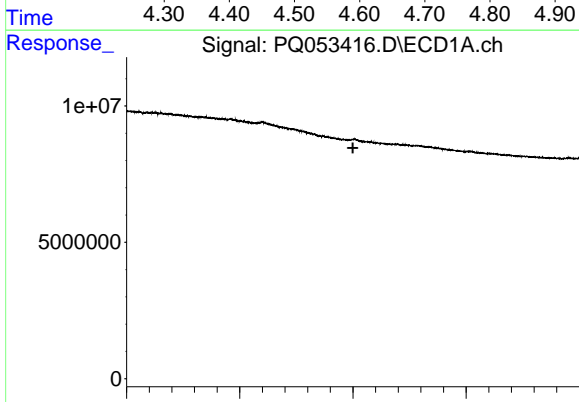
#2 Decachlorobiphenyl
R.T.: 9.577 min
Delta R.T.: 0.000 min
Response: 174240261
Conc: 17.15 ng/ml



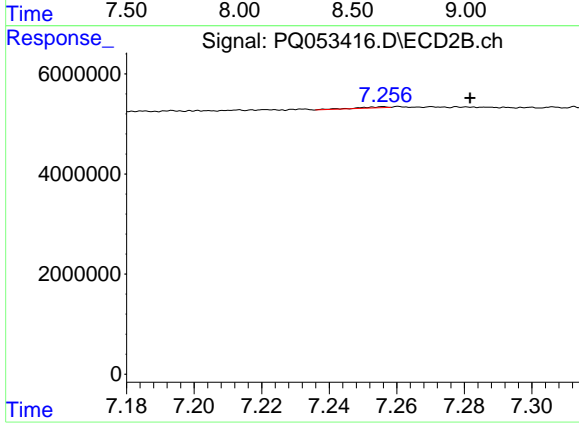
#9 AR-1221-2
 R.T.: 5.581 min
 Delta R.T.: 0.008 min
 Response: 6207868
 Conc: 28.92 ng/ml



#9 AR-1221-2
 R.T.: 4.594 min
 Delta R.T.: -0.002 min
 Response: 3193603
 Conc: 32.08 ng/ml



#32 AR-1260-2
 R.T.: 0.000 min
 Exp R.T. : 8.500 min
 Response: 0
 Conc: N.D.



#32 AR-1260-2
 R.T.: 7.256 min
 Delta R.T.: -0.026 min
 Response: 140459
 Conc: 0.13 ng/ml