

Data Path : Z:\pestpcbsrv\HPCHEM1\ECD\_Q\Data\PQ051021\  
 Data File : PQ053418.D  
 Signal(s) : Signal #1: ECD1A.ch Signal #2: ECD2B.ch  
 Acq On : 10 May 2021 16:02  
 Operator : DD\AJ  
 Sample : AR1660ICC750  
 Misc :  
 ALS Vial : 4 Sample Multiplier: 1

Integration File signal 1: autoint1.e  
 Integration File signal 2: autoint2.e  
 Quant Time: May 11 02:22:04 2021  
 Quant Method : Z:\pestpcbsrv\HPCHEM1\ECD\_Q\Method\PQ051021.M  
 Quant Title : GC EXTRACTABLES  
 QLast Update : Tue May 11 02:21:19 2021  
 Response via : Initial Calibration  
 Integrator: ChemStation

Volume Inj. : 2 µl  
 Signal #1 Phase : ZB-MR1 Signal #2 Phase: ZB-MR2  
 Signal #1 Info : 30Mx0.32mmx 0.50µ Signal #2 Info : 30M x 0.32mm x 0.25µm

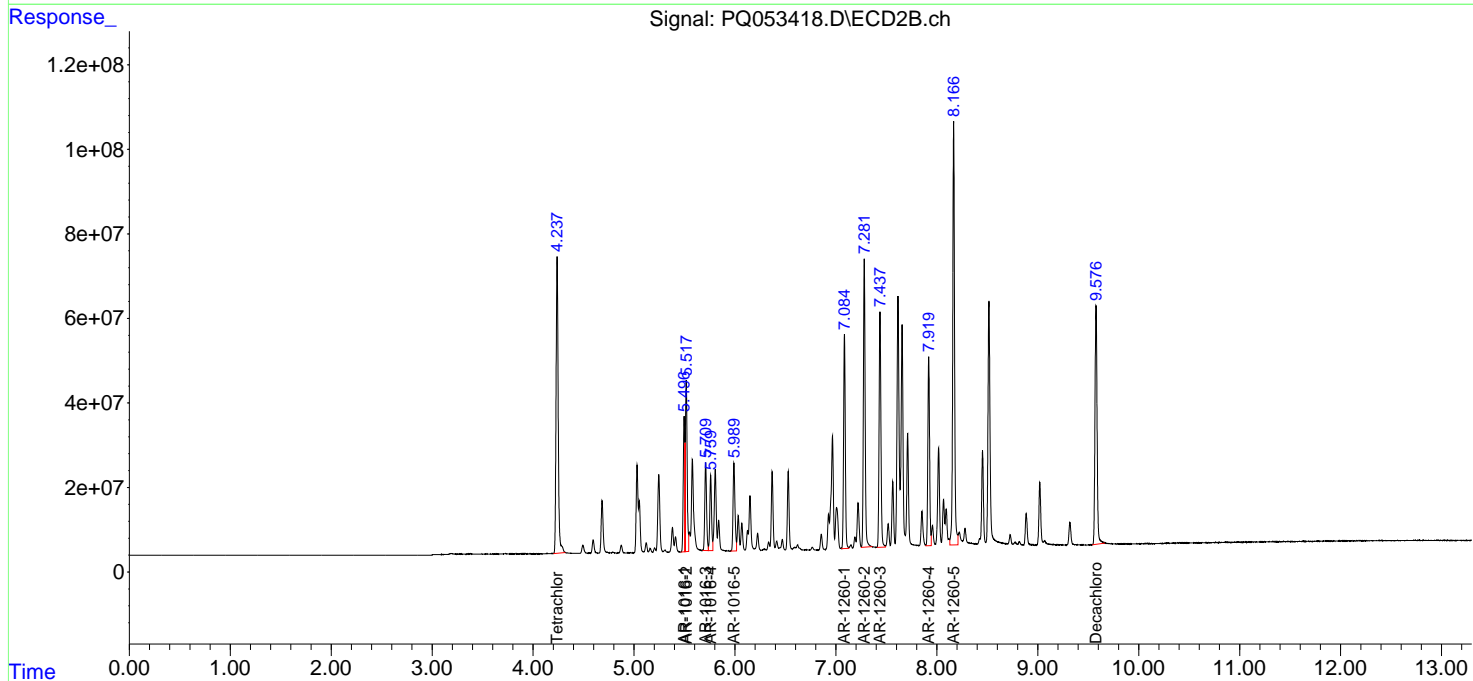
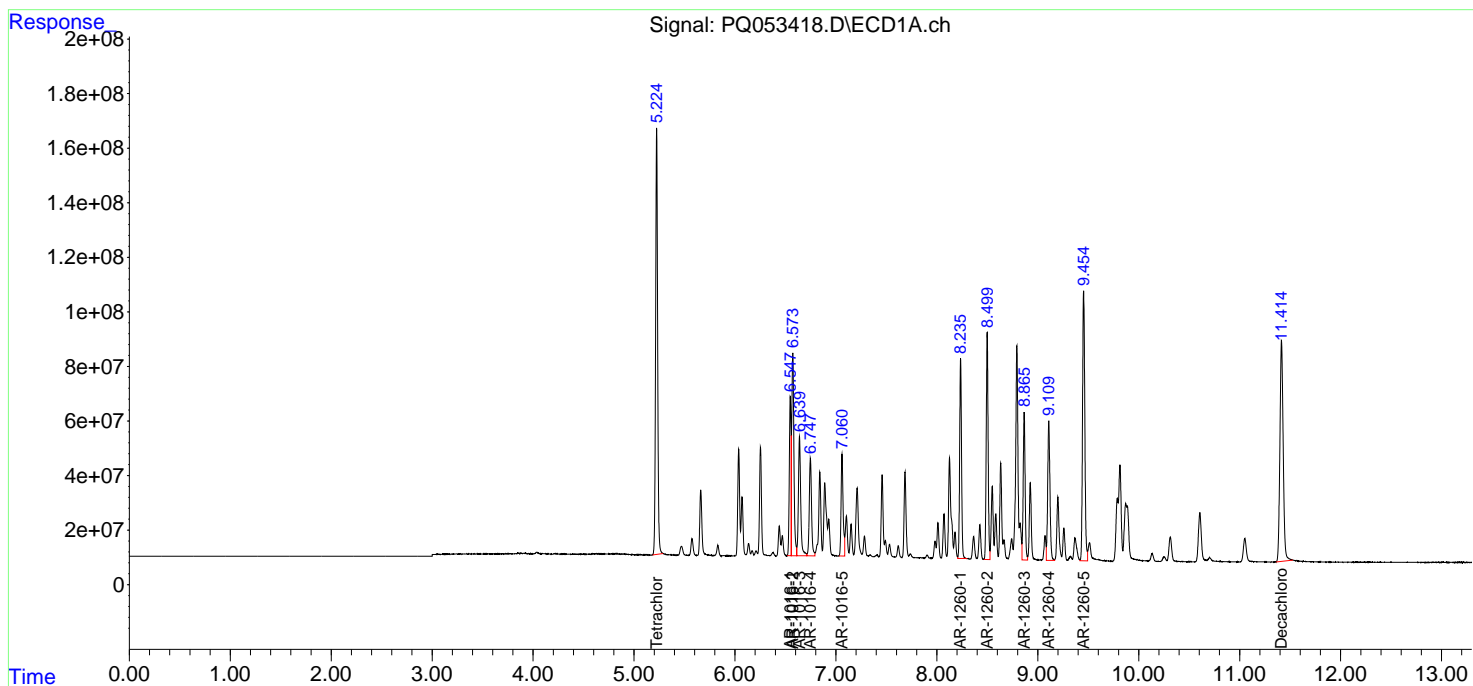
Compound	RT#1	RT#2	Resp#1	Resp#2	ng/ml	ng/ml
-----						
System Monitoring Compounds						
1) SA Tetrachlo...	5.224	4.238	2172.6E6	1016.2E6	74.394	75.731
2) SA Decachlor...	11.414	9.577	1823.5E6	798.8E6	74.094	76.015
Target Compounds						
3) L1 AR-1016-1	6.548	5.496	700.3E6	341.5E6	750.565	776.460
4) L1 AR-1016-2	6.573	5.517	1096.8E6	503.7E6	735.986	754.825
5) L1 AR-1016-3	6.639	5.709	693.2E6	259.1E6	722.948	760.925
6) L1 AR-1016-4	6.748	5.759	559.9E6	213.8E6	736.136	739.486
7) L1 AR-1016-5	7.061	5.990	521.3E6	274.9E6	734.730	748.673
31) L7 AR-1260-1	8.236	7.085	952.7E6	598.4E6	728.214	743.879
32) L7 AR-1260-2	8.499	7.281	1066.5E6	822.3E6	743.726	761.413
33) L7 AR-1260-3	8.866	7.437	738.2E6	705.9E6	731.085	754.507
34) L7 AR-1260-4	9.110	7.920	778.7E6	528.9E6	745.861	760.686
35) L7 AR-1260-5	9.454	8.167	1512.0E6	1285.9E6	770.627	784.953

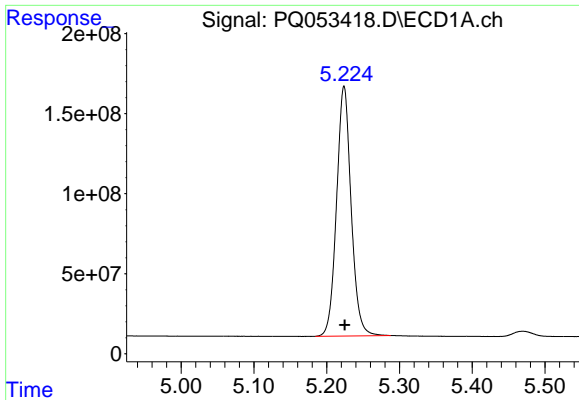
(f)=RT Delta > 1/2 Window (#)=Amounts differ by > 25% (m)=manual int.

Data Path : Z:\pestpcbsrv\HPCHEM1\ECD\_Q\Data\PQ051021\  
 Data File : PQ053418.D  
 Signal(s) : Signal #1: ECD1A.ch Signal #2: ECD2B.ch  
 Acq On : 10 May 2021 16:02  
 Operator : DD\AJ  
 Sample : AR1660ICC750  
 Misc :  
 ALS Vial : 4 Sample Multiplier: 1

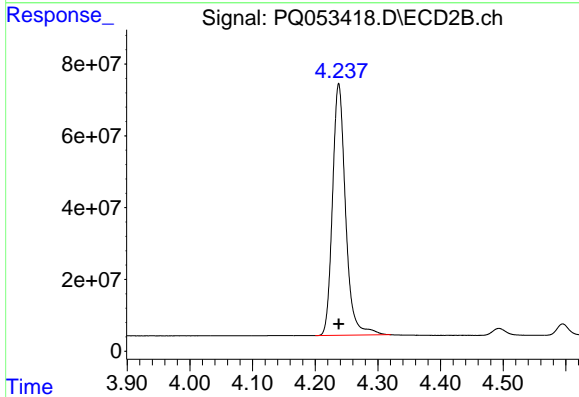
Integration File signal 1: autoint1.e  
 Integration File signal 2: autoint2.e  
 Quant Time: May 11 02:22:04 2021  
 Quant Method : Z:\pestpcbsrv\HPCHEM1\ECD\_Q\Method\PQ051021.M  
 Quant Title : GC EXTRACTABLES  
 QLast Update : Tue May 11 02:21:19 2021  
 Response via : Initial Calibration  
 Integrator: ChemStation

Volume Inj. : 2 µl  
 Signal #1 Phase : ZB-MR1 Signal #2 Phase: ZB-MR2  
 Signal #1 Info : 30Mx0.32mmx 0.50µ Signal #2 Info : 30M x 0.32mm x 0.25µm

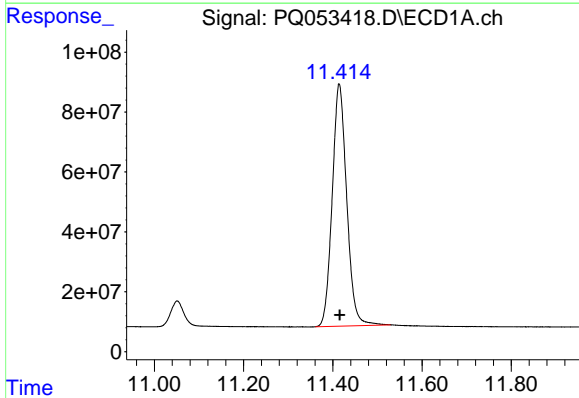




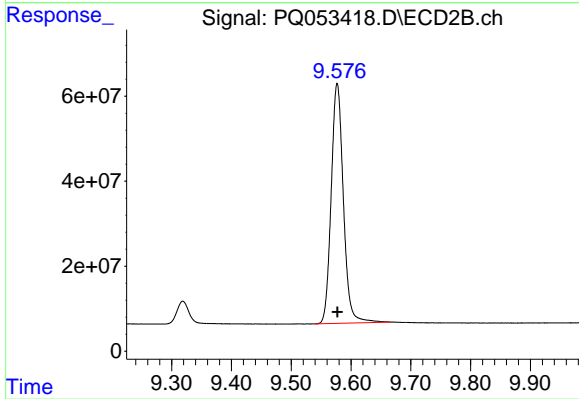
#1 Tetrachloro-m-xylene  
 R.T.: 5.224 min  
 Delta R.T.: -0.001 min  
 Response: 2172590915  
 Conc: 74.39 ng/ml



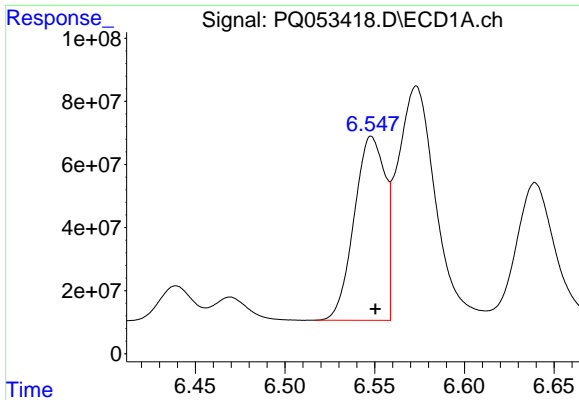
#1 Tetrachloro-m-xylene  
 R.T.: 4.238 min  
 Delta R.T.: 0.000 min  
 Response: 1016208167  
 Conc: 75.73 ng/ml



#2 Decachlorobiphenyl  
 R.T.: 11.414 min  
 Delta R.T.: -0.001 min  
 Response: 1823489981  
 Conc: 74.09 ng/ml

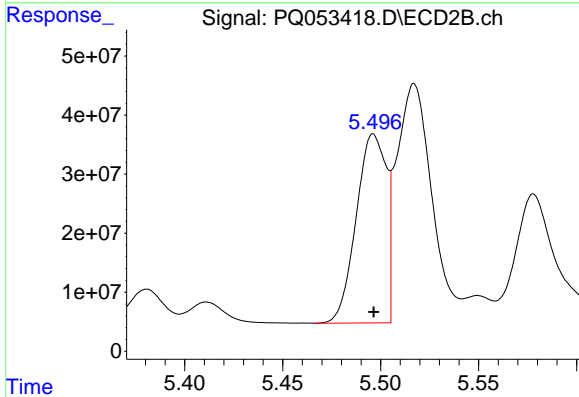


#2 Decachlorobiphenyl  
 R.T.: 9.577 min  
 Delta R.T.: 0.000 min  
 Response: 798784172  
 Conc: 76.02 ng/ml



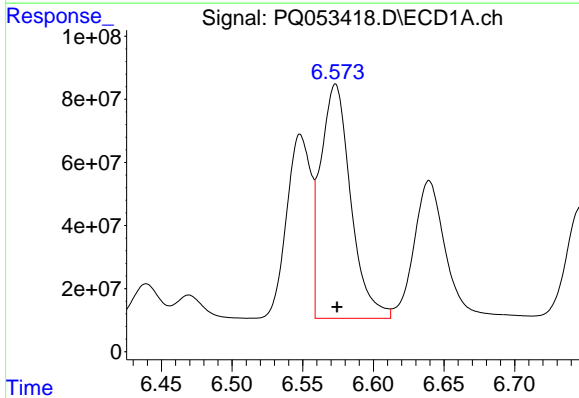
#3 AR-1016-1

R.T.: 6.548 min  
Delta R.T.: -0.002 min  
Response: 700321697  
Conc: 750.57 ng/ml



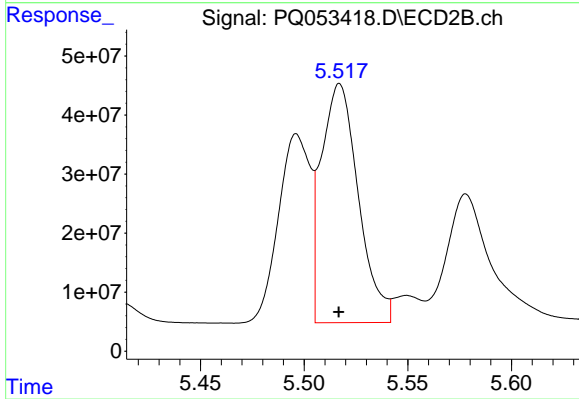
#3 AR-1016-1

R.T.: 5.496 min  
Delta R.T.: 0.000 min  
Response: 341484311  
Conc: 776.46 ng/ml



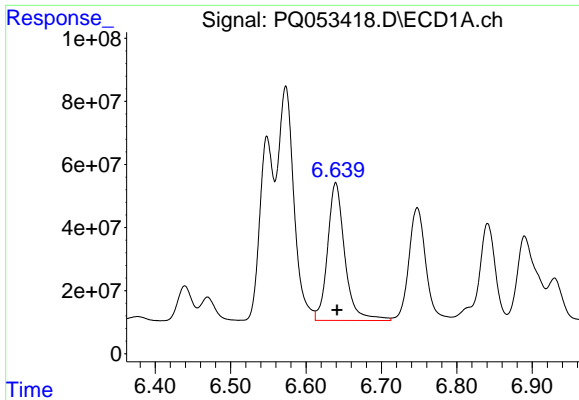
#4 AR-1016-2

R.T.: 6.573 min  
Delta R.T.: -0.001 min  
Response: 1096758259  
Conc: 735.99 ng/ml



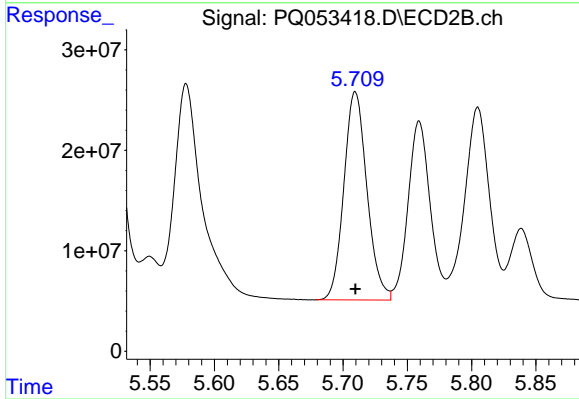
#4 AR-1016-2

R.T.: 5.517 min  
Delta R.T.: 0.000 min  
Response: 503703320  
Conc: 754.82 ng/ml



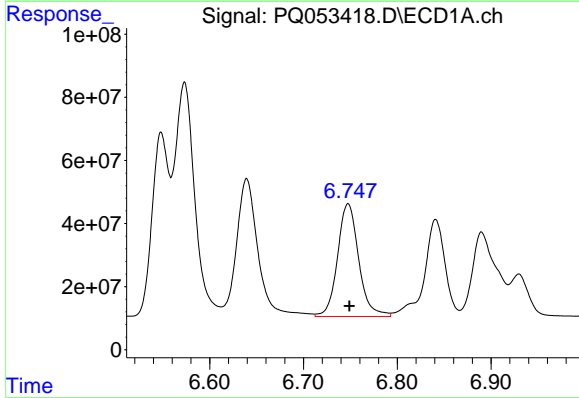
#5 AR-1016-3

R.T.: 6.639 min  
Delta R.T.: -0.002 min  
Response: 693235924  
Conc: 722.95 ng/ml



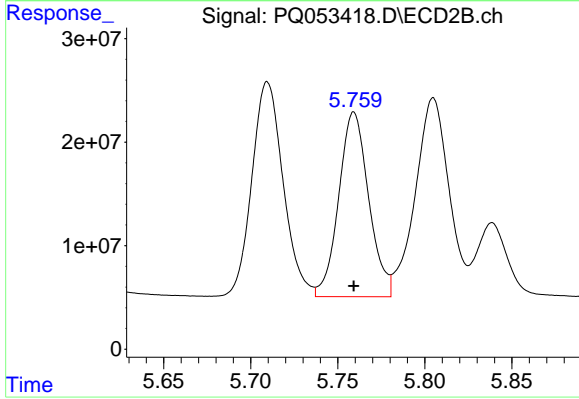
#5 AR-1016-3

R.T.: 5.709 min  
Delta R.T.: 0.000 min  
Response: 259074789  
Conc: 760.92 ng/ml



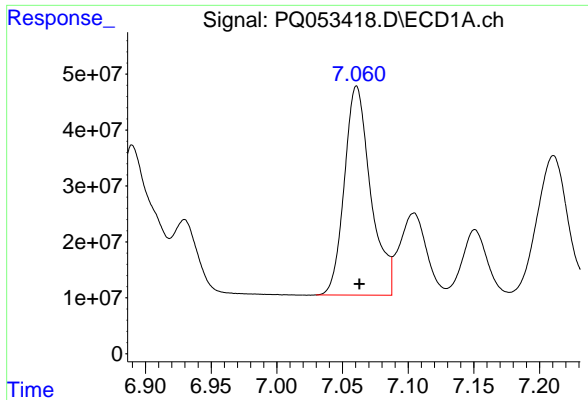
#6 AR-1016-4

R.T.: 6.748 min  
Delta R.T.: -0.001 min  
Response: 559891868  
Conc: 736.14 ng/ml



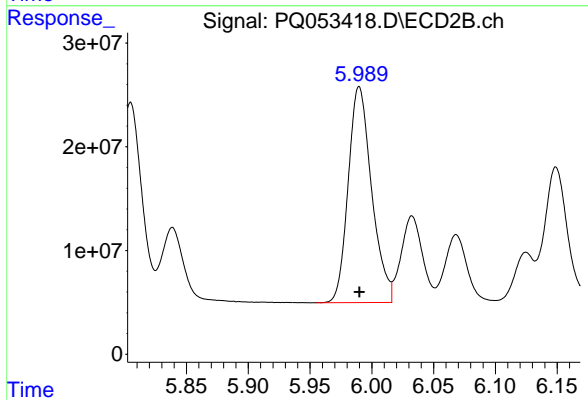
#6 AR-1016-4

R.T.: 5.759 min  
Delta R.T.: 0.000 min  
Response: 213770248  
Conc: 739.49 ng/ml



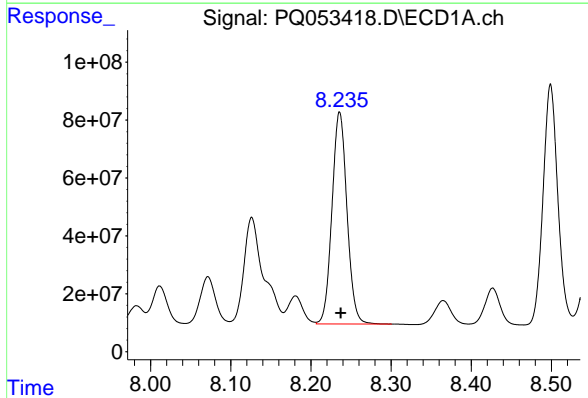
#7 AR-1016-5

R.T.: 7.061 min  
Delta R.T.: -0.002 min  
Response: 521345971  
Conc: 734.73 ng/ml



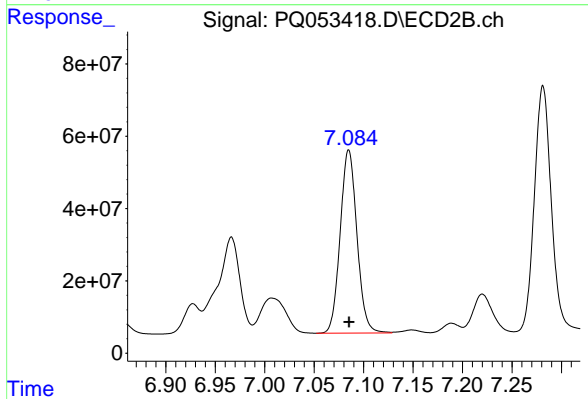
#7 AR-1016-5

R.T.: 5.990 min  
Delta R.T.: 0.000 min  
Response: 274935719  
Conc: 748.67 ng/ml



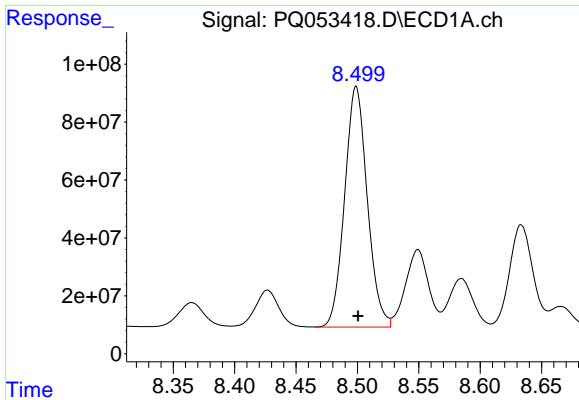
#31 AR-1260-1

R.T.: 8.236 min  
Delta R.T.: -0.001 min  
Response: 952718626  
Conc: 728.21 ng/ml



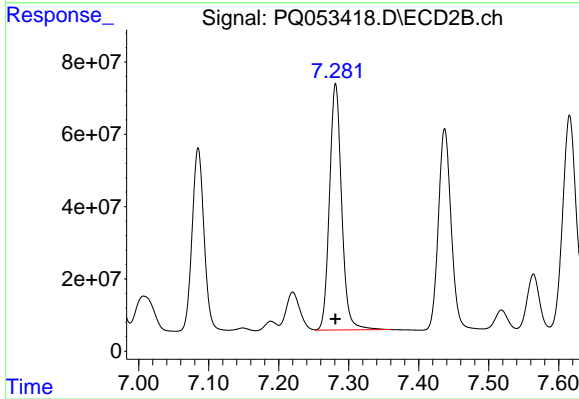
#31 AR-1260-1

R.T.: 7.085 min  
Delta R.T.: 0.000 min  
Response: 598403273  
Conc: 743.88 ng/ml



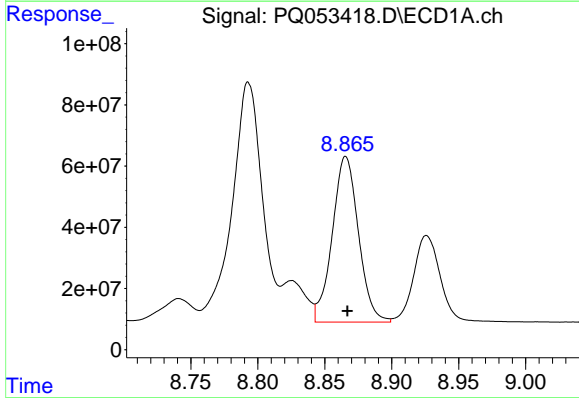
#32 AR-1260-2

R.T.: 8.499 min  
Delta R.T.: -0.002 min  
Response: 1066491329  
Conc: 743.73 ng/ml



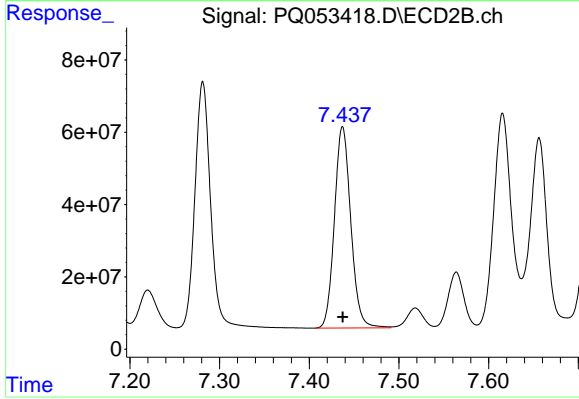
#32 AR-1260-2

R.T.: 7.281 min  
Delta R.T.: 0.000 min  
Response: 822299375  
Conc: 761.41 ng/ml



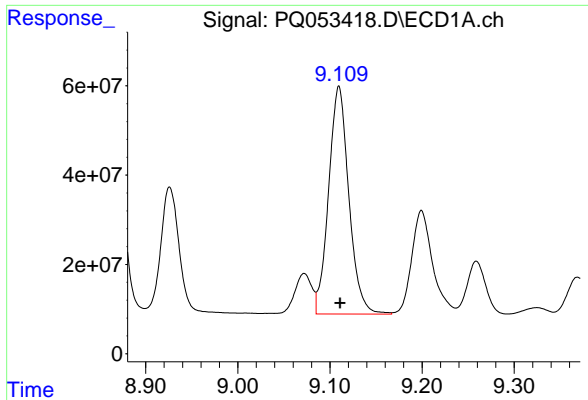
#33 AR-1260-3

R.T.: 8.866 min  
Delta R.T.: -0.001 min  
Response: 738150820  
Conc: 731.08 ng/ml



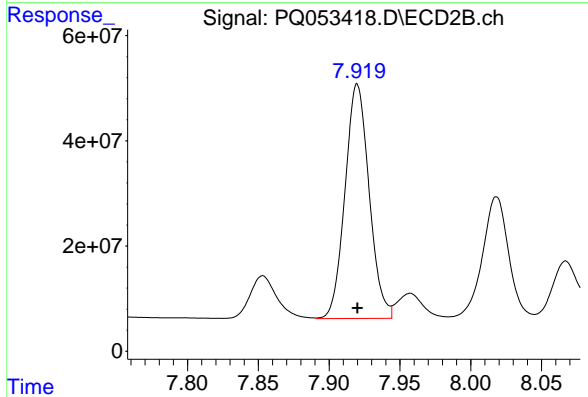
#33 AR-1260-3

R.T.: 7.437 min  
Delta R.T.: 0.000 min  
Response: 705941935  
Conc: 754.51 ng/ml



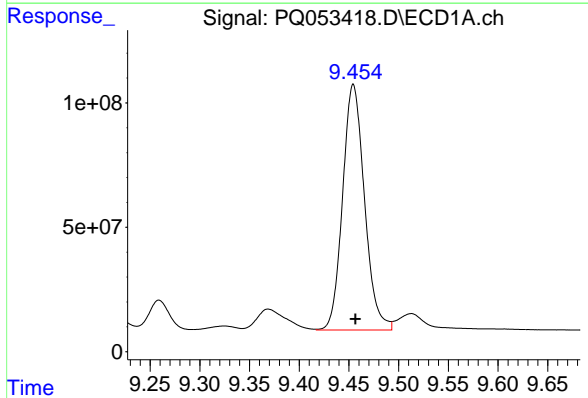
#34 AR-1260-4

R.T.: 9.110 min  
Delta R.T.: -0.001 min  
Response: 778679222  
Conc: 745.86 ng/ml



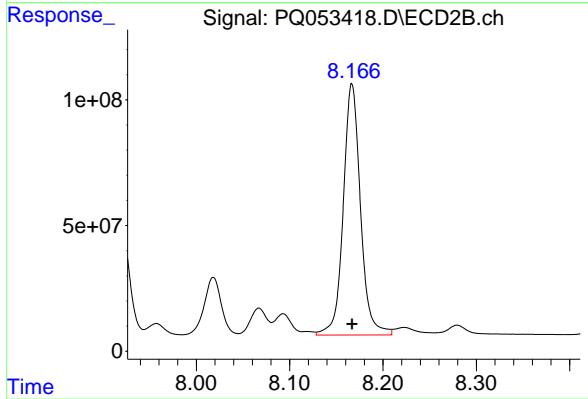
#34 AR-1260-4

R.T.: 7.920 min  
Delta R.T.: 0.000 min  
Response: 528859812  
Conc: 760.69 ng/ml



#35 AR-1260-5

R.T.: 9.454 min  
Delta R.T.: -0.002 min  
Response: 1511952557  
Conc: 770.63 ng/ml



#35 AR-1260-5

R.T.: 8.167 min  
Delta R.T.: 0.000 min  
Response: 1285880703  
Conc: 784.95 ng/ml