

Data Path : Z:\pestpcbsrv\HPCHEM1\ECD_Q\Data\PQ051021\
 Data File : PQ053422.D
 Signal(s) : Signal #1: ECD1A.ch Signal #2: ECD2B.ch
 Acq On : 10 May 2021 17:08
 Operator : DD\AJ
 Sample : AR1221ICC500
 Misc :
 ALS Vial : 8 Sample Multiplier: 1

Integration File signal 1: autoint1.e
 Integration File signal 2: autoint2.e
 Quant Time: May 11 02:41:45 2021
 Quant Method : Z:\pestpcbsrv\HPCHEM1\ECD_Q\Method\PQ051021.M
 Quant Title : GC EXTRACTABLES
 QLast Update : Tue May 11 02:41:27 2021
 Response via : Initial Calibration
 Integrator: ChemStation

Volume Inj. : 2 µl
 Signal #1 Phase : ZB-MR1 Signal #2 Phase: ZB-MR2
 Signal #1 Info : 30Mx0.32mmx 0.50µ Signal #2 Info : 30M x 0.32mm x 0.25µm

Compound	RT#1	RT#2	Resp#1	Resp#2	ng/ml	ng/ml

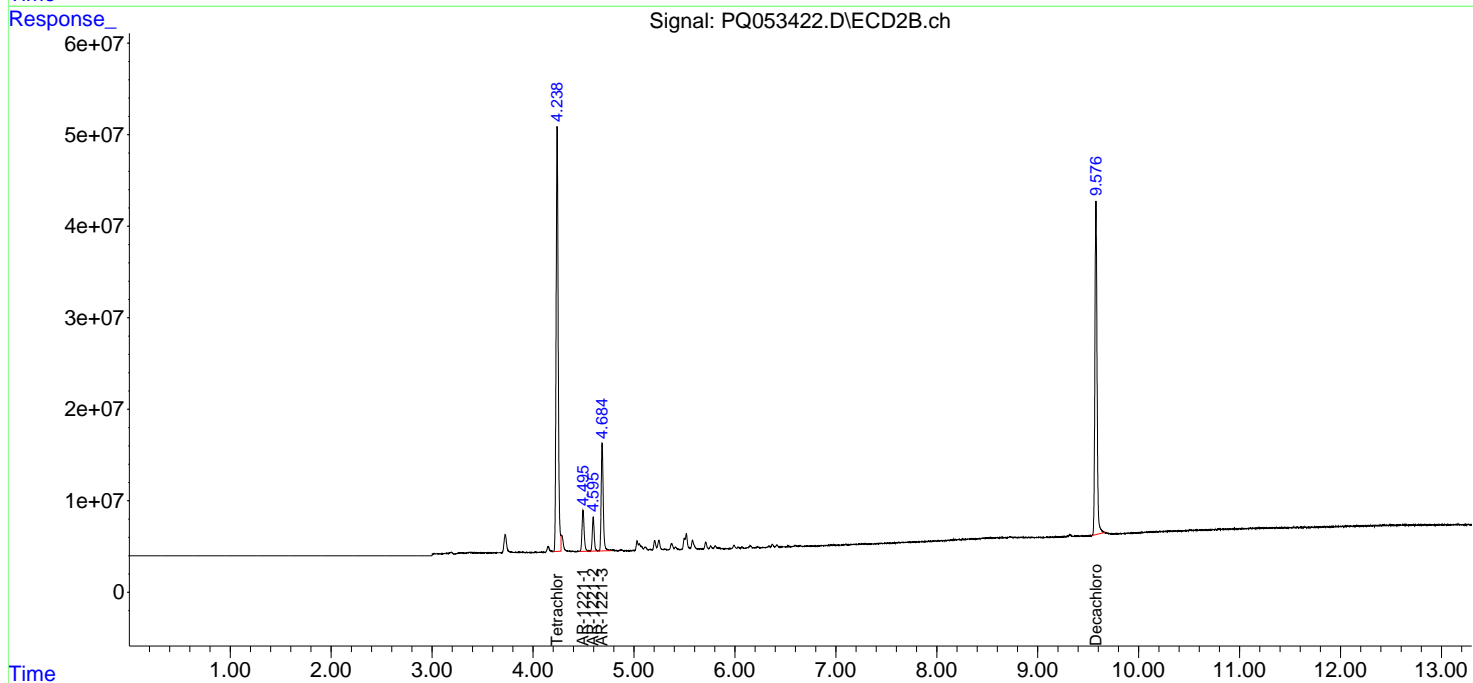
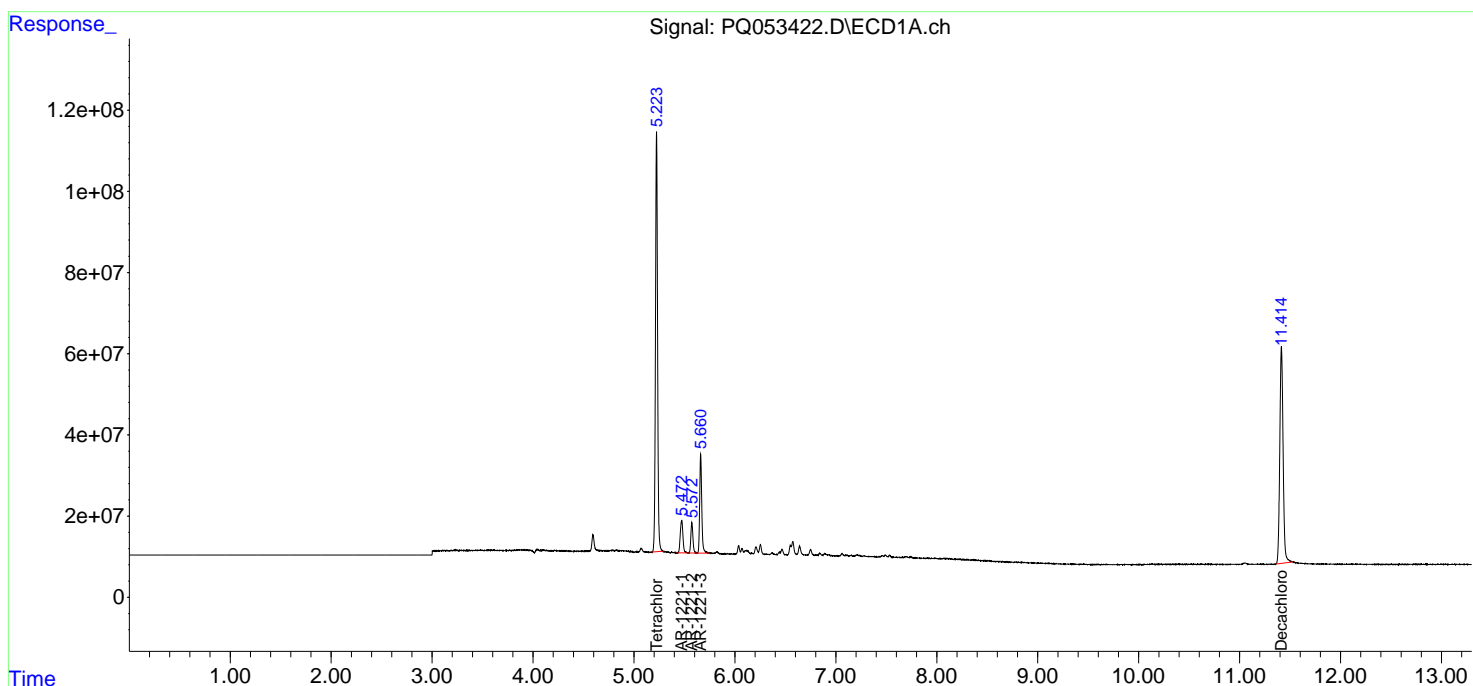
System Monitoring Compounds						
1) SA Tetrachlo...	5.223	4.238	1484.6E6	661.6E6	50.000	50.000
2) SA Decachlor...	11.414	9.576	1219.5E6	523.4E6	50.000	50.000
Target Compounds						
8) L2 AR-1221-1	5.473	4.495	147.4E6	67338097	500.000	500.000
9) L2 AR-1221-2	5.573	4.596	107.3E6	49771922	500.000	500.000
10) L2 AR-1221-3	5.660	4.684	345.2E6	162.4E6	500.000	500.000

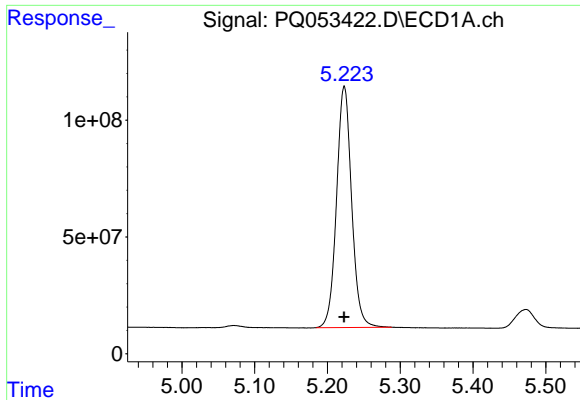
(f)=RT Delta > 1/2 Window (#)=Amounts differ by > 25% (m)=manual int.

Data Path : Z:\pestpcbsrv\HPCHEM1\ECD_Q\Data\PQ051021\
 Data File : PQ053422.D
 Signal(s) : Signal #1: ECD1A.ch Signal #2: ECD2B.ch
 Acq On : 10 May 2021 17:08
 Operator : DD\AJ
 Sample : AR1221ICC500
 Misc :
 ALS Vial : 8 Sample Multiplier: 1

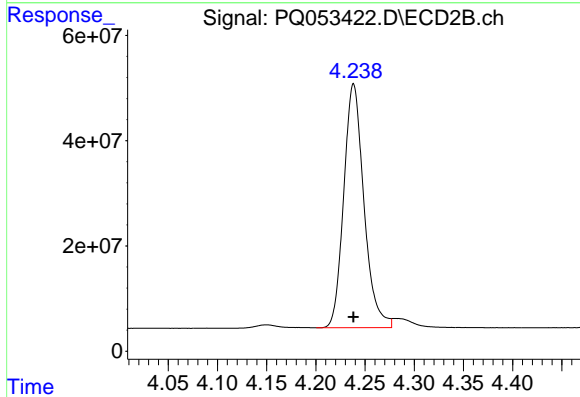
Integration File signal 1: autoint1.e
 Integration File signal 2: autoint2.e
 Quant Time: May 11 02:41:45 2021
 Quant Method : Z:\pestpcbsrv\HPCHEM1\ECD_Q\Method\PQ051021.M
 Quant Title : GC EXTRACTABLES
 QLast Update : Tue May 11 02:41:27 2021
 Response via : Initial Calibration
 Integrator: ChemStation

Volume Inj. : 2 µl
 Signal #1 Phase : ZB-MR1 Signal #2 Phase: ZB-MR2
 Signal #1 Info : 30Mx0.32mmx 0.50µ Signal #2 Info : 30M x 0.32mm x 0.25µm

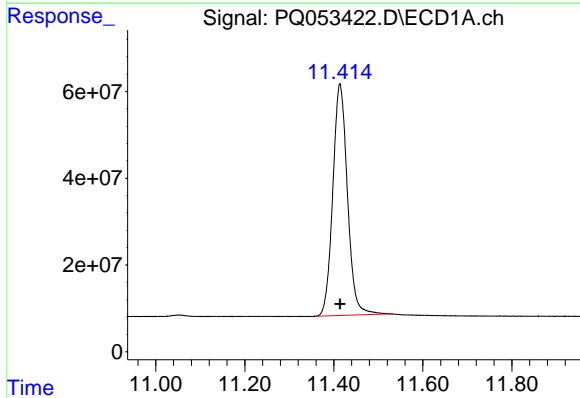




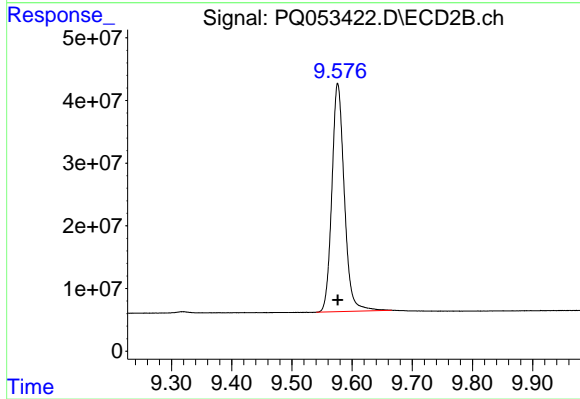
#1 Tetrachloro-m-xylene
R.T.: 5.223 min
Delta R.T.: 0.000 min
Response: 1484635241
Conc: 50.00 ng/ml



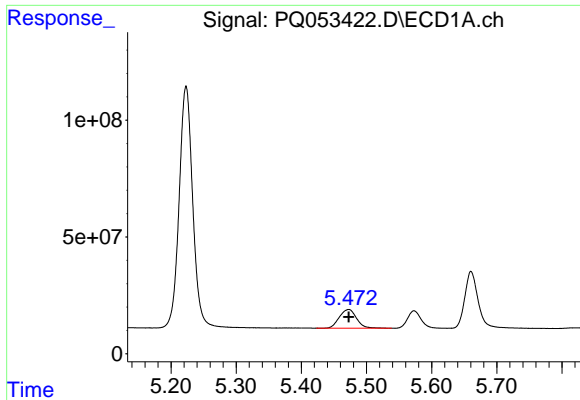
#1 Tetrachloro-m-xylene
R.T.: 4.238 min
Delta R.T.: 0.000 min
Response: 661619115
Conc: 50.00 ng/ml



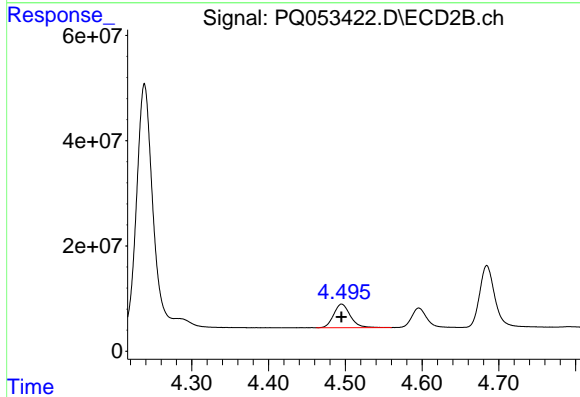
#2 Decachlorobiphenyl
R.T.: 11.414 min
Delta R.T.: 0.000 min
Response: 1219487336
Conc: 50.00 ng/ml



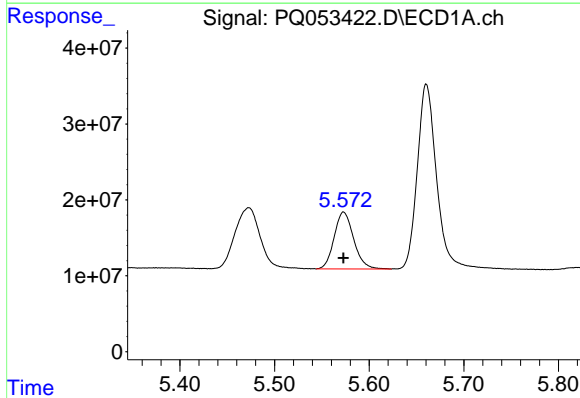
#2 Decachlorobiphenyl
R.T.: 9.576 min
Delta R.T.: 0.000 min
Response: 523376933
Conc: 50.00 ng/ml



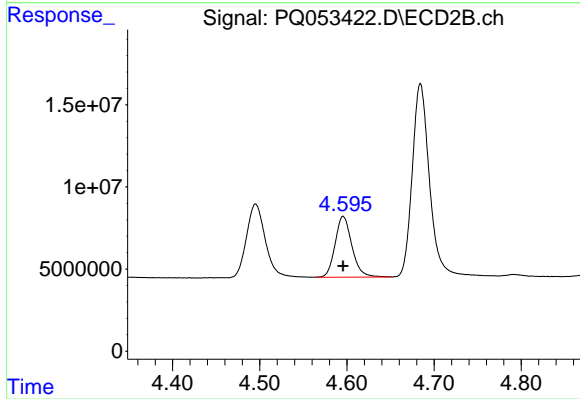
#8 AR-1221-1
 R.T.: 5.473 min
 Delta R.T.: 0.000 min
 Response: 147398138
 Conc: 500.00 ng/ml



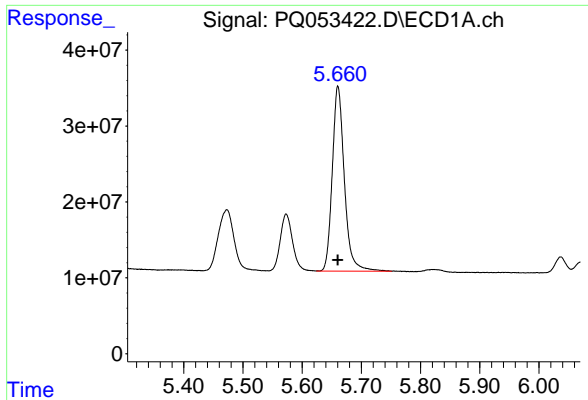
#8 AR-1221-1
 R.T.: 4.495 min
 Delta R.T.: 0.000 min
 Response: 67338097
 Conc: 500.00 ng/ml



#9 AR-1221-2
 R.T.: 5.573 min
 Delta R.T.: 0.000 min
 Response: 107323498
 Conc: 500.00 ng/ml

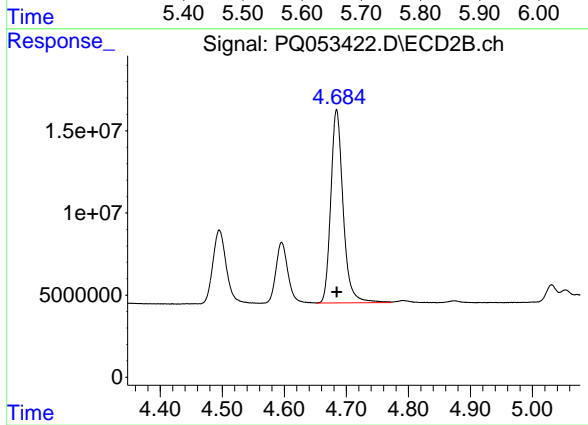


#9 AR-1221-2
 R.T.: 4.596 min
 Delta R.T.: 0.000 min
 Response: 49771922
 Conc: 500.00 ng/ml



#10 AR-1221-3

R.T.: 5.660 min
Delta R.T.: 0.000 min
Response: 345201018
Conc: 500.00 ng/ml



#10 AR-1221-3

R.T.: 4.684 min
Delta R.T.: 0.000 min
Response: 162424752
Conc: 500.00 ng/ml