

Data Path : Z:\pestpcbsrv\HPCHEM1\ECD\_Q\Data\PQ051021\  
 Data File : PQ053425.D  
 Signal(s) : Signal #1: ECD1A.ch Signal #2: ECD2B.ch  
 Acq On : 10 May 2021 17:57  
 Operator : DD\AJ  
 Sample : AR1248ICC500  
 Misc :  
 ALS Vial : 11 Sample Multiplier: 1

Integration File signal 1: autoint1.e  
 Integration File signal 2: autoint2.e  
 Quant Time: May 11 03:47:28 2021  
 Quant Method : Z:\pestpcbsrv\HPCHEM1\ECD\_Q\Method\PQ051021.M  
 Quant Title : GC EXTRACTABLES  
 QLast Update : Tue May 11 03:45:40 2021  
 Response via : Initial Calibration  
 Integrator: ChemStation

Volume Inj. : 2 µl  
 Signal #1 Phase : ZB-MR1 Signal #2 Phase: ZB-MR2  
 Signal #1 Info : 30Mx0.32mmx 0.50µ Signal #2 Info : 30M x 0.32mm x 0.25µm

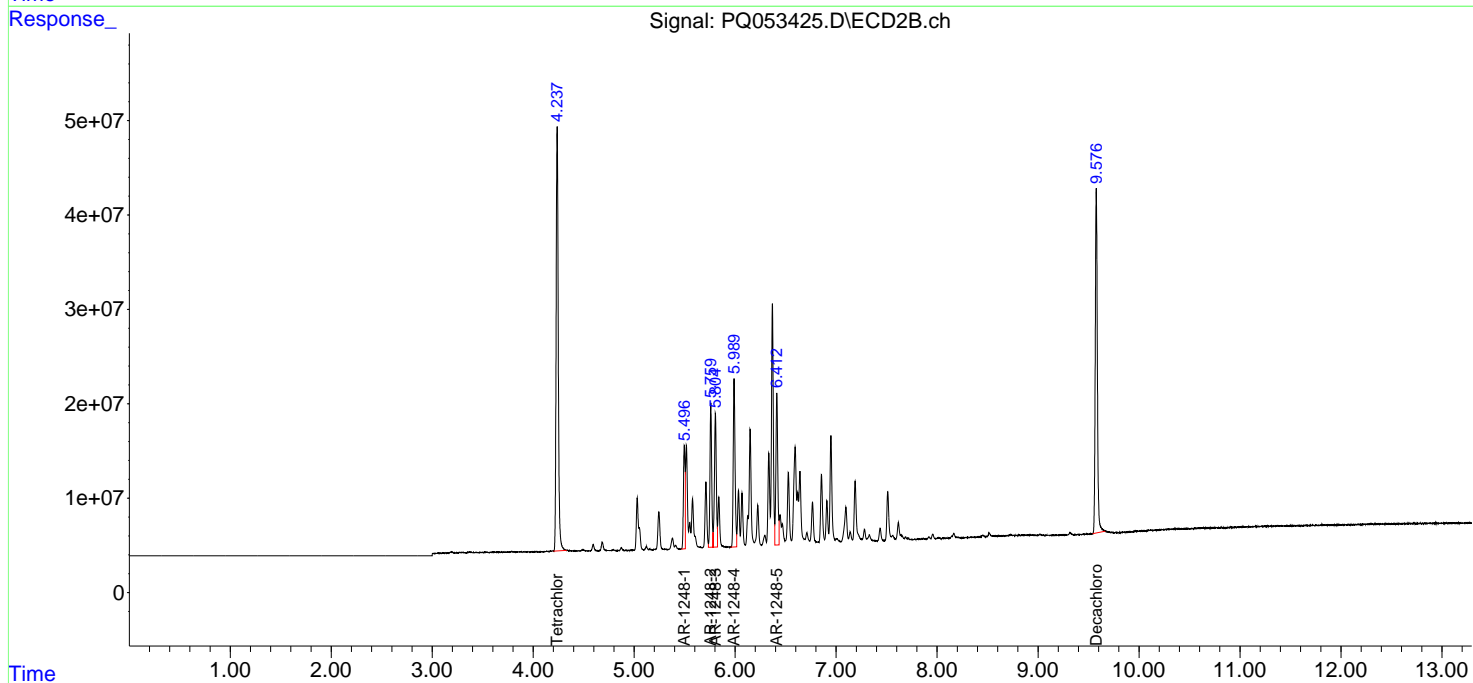
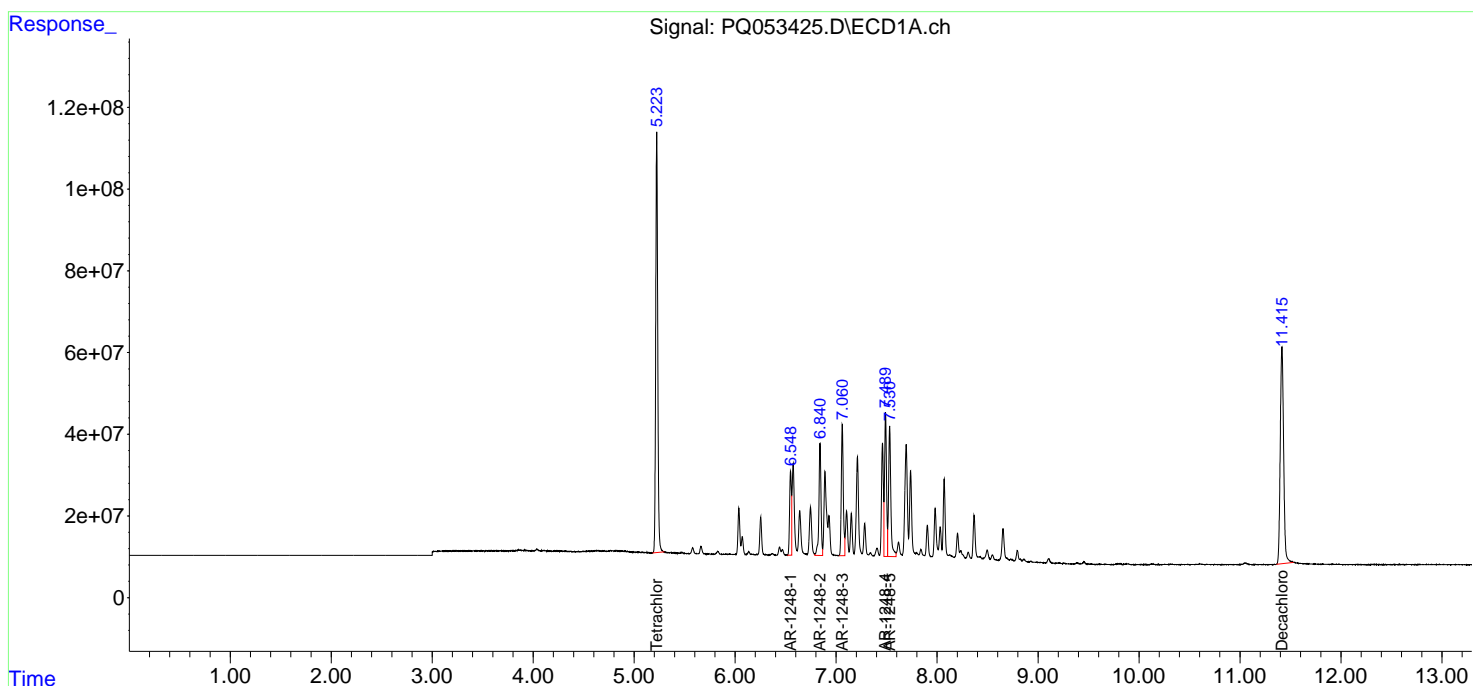
Compound	RT#1	RT#2	Resp#1	Resp#2	ng/ml	ng/ml
-----						
System Monitoring Compounds						
1) SA Tetrachlo...	5.223	4.237	1413.9E6	640.2E6	50.000	50.000
2) SA Decachlor...	11.415	9.577	1232.0E6	534.6E6	50.000	50.000
Target Compounds						
21) L5 AR-1248-1	6.549	5.496	258.4E6	122.9E6	500.000	500.000
22) L5 AR-1248-2	6.840	5.759	392.7E6	182.4E6	500.000	500.000
23) L5 AR-1248-3	7.061	5.804	439.9E6	185.7E6	500.000	500.000
24) L5 AR-1248-4	7.490	5.989	475.0E6	225.8E6	500.000	500.000
25) L5 AR-1248-5	7.530	6.413	492.4E6	209.6E6	500.000	500.000
-----						

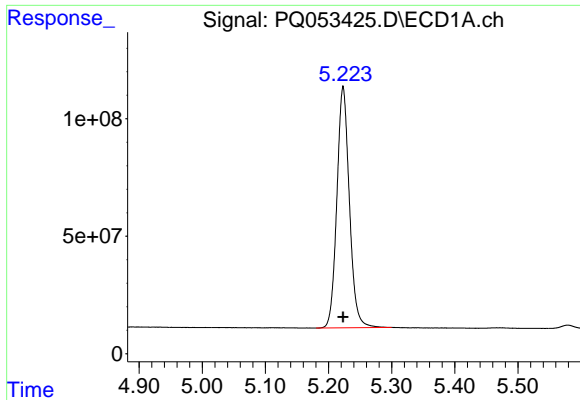
(f)=RT Delta > 1/2 Window (#)=Amounts differ by > 25% (m)=manual int.

Data Path : Z:\pestpcbsrv\HPCHEM1\ECD\_Q\Data\PQ051021\  
 Data File : PQ053425.D  
 Signal(s) : Signal #1: ECD1A.ch Signal #2: ECD2B.ch  
 Acq On : 10 May 2021 17:57  
 Operator : DD\AJ  
 Sample : AR1248ICC500  
 Misc :  
 ALS Vial : 11 Sample Multiplier: 1

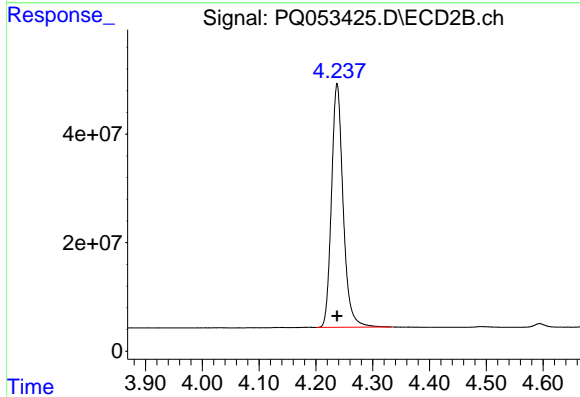
Integration File signal 1: autoint1.e  
 Integration File signal 2: autoint2.e  
 Quant Time: May 11 03:47:28 2021  
 Quant Method : Z:\pestpcbsrv\HPCHEM1\ECD\_Q\Method\PQ051021.M  
 Quant Title : GC EXTRACTABLES  
 QLast Update : Tue May 11 03:45:40 2021  
 Response via : Initial Calibration  
 Integrator: ChemStation

Volume Inj. : 2 µl  
 Signal #1 Phase : ZB-MR1 Signal #2 Phase: ZB-MR2  
 Signal #1 Info : 30Mx0.32mmx 0.50µm Signal #2 Info : 30M x 0.32mm x 0.25µm

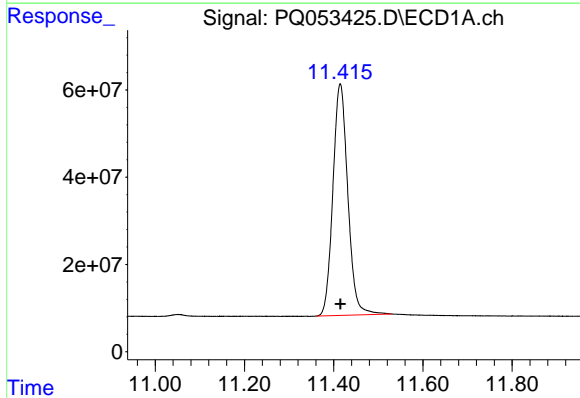




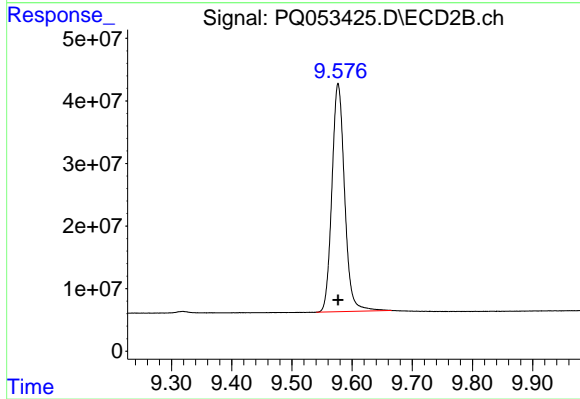
#1 Tetrachloro-m-xylene  
R.T.: 5.223 min  
Delta R.T.: 0.000 min  
Response: 1413902117  
Conc: 50.00 ng/ml



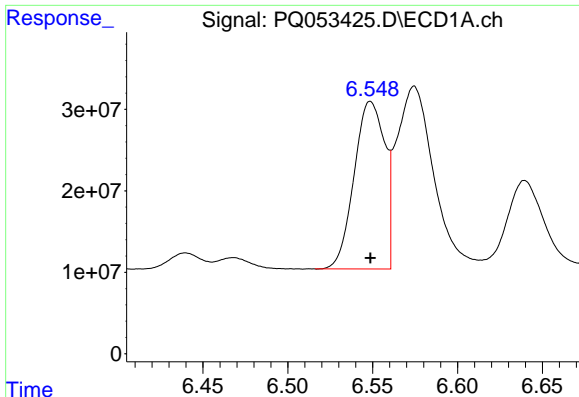
#1 Tetrachloro-m-xylene  
R.T.: 4.237 min  
Delta R.T.: 0.000 min  
Response: 640164098  
Conc: 50.00 ng/ml



#2 Decachlorobiphenyl  
R.T.: 11.415 min  
Delta R.T.: 0.000 min  
Response: 1232047189  
Conc: 50.00 ng/ml

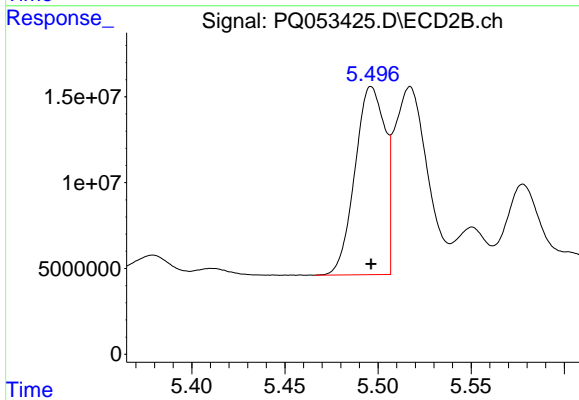


#2 Decachlorobiphenyl  
R.T.: 9.577 min  
Delta R.T.: 0.000 min  
Response: 534600525  
Conc: 50.00 ng/ml



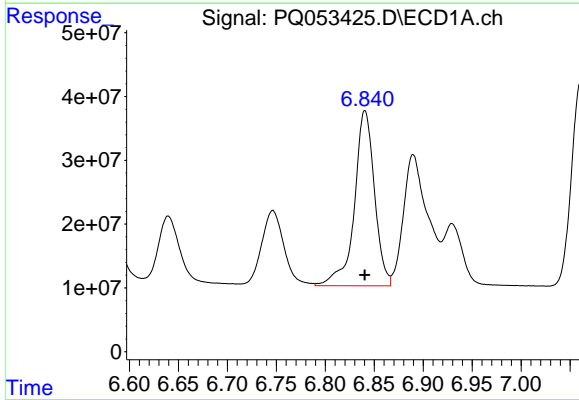
#21 AR-1248-1

R.T.: 6.549 min  
 Delta R.T.: 0.000 min  
 Response: 258449401  
 Conc: 500.00 ng/ml



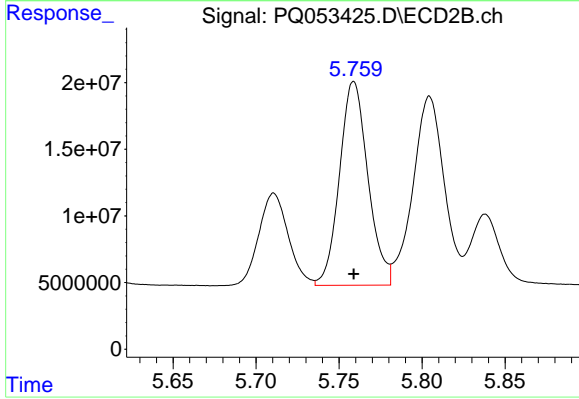
#21 AR-1248-1

R.T.: 5.496 min  
 Delta R.T.: 0.000 min  
 Response: 122907131  
 Conc: 500.00 ng/ml



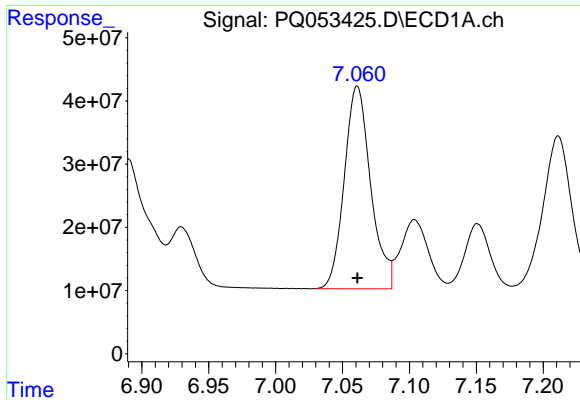
#22 AR-1248-2

R.T.: 6.840 min  
 Delta R.T.: 0.000 min  
 Response: 392692088  
 Conc: 500.00 ng/ml



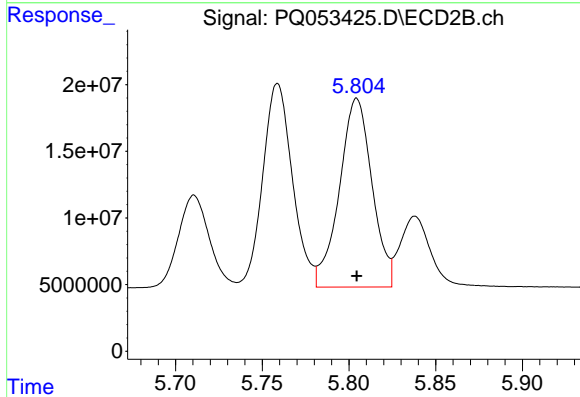
#22 AR-1248-2

R.T.: 5.759 min  
 Delta R.T.: 0.000 min  
 Response: 182428989  
 Conc: 500.00 ng/ml



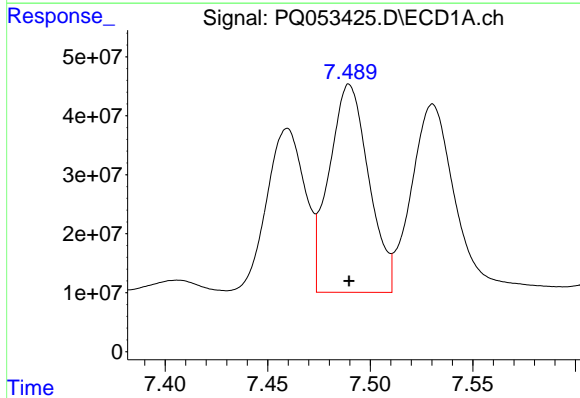
#23 AR-1248-3

R.T.: 7.061 min  
Delta R.T.: 0.000 min  
Response: 439915260  
Conc: 500.00 ng/ml



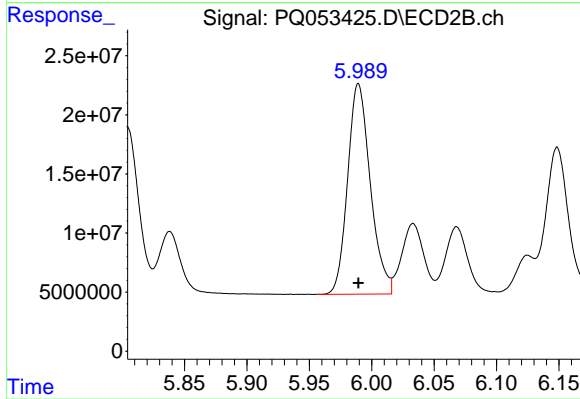
#23 AR-1248-3

R.T.: 5.804 min  
Delta R.T.: 0.000 min  
Response: 185728664  
Conc: 500.00 ng/ml



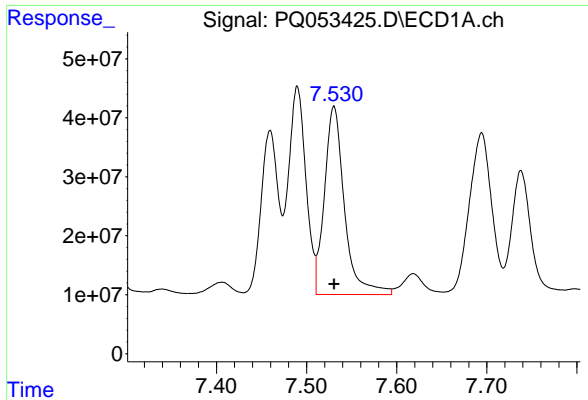
#24 AR-1248-4

R.T.: 7.490 min  
Delta R.T.: 0.000 min  
Response: 475002411  
Conc: 500.00 ng/ml



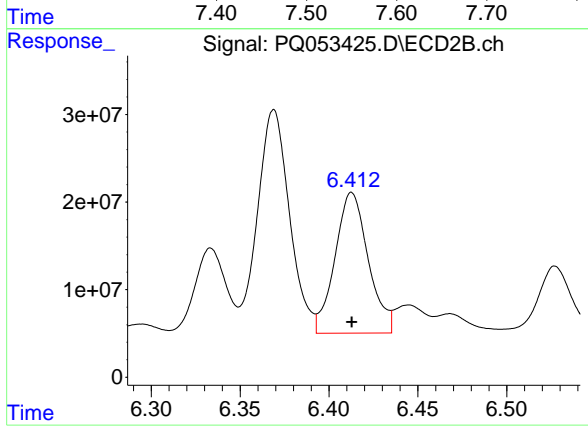
#24 AR-1248-4

R.T.: 5.989 min  
Delta R.T.: 0.000 min  
Response: 225777146  
Conc: 500.00 ng/ml



#25 AR-1248-5

R.T.: 7.530 min  
Delta R.T.: 0.000 min  
Response: 492381976  
Conc: 500.00 ng/ml



#25 AR-1248-5

R.T.: 6.413 min  
Delta R.T.: 0.000 min  
Response: 209596234  
Conc: 500.00 ng/ml