

Data Path : Z:\pestpcbsrv\HPCHEM1\ECD_Q\Data\PQ051722\
 Data File : PQ057602.D
 Signal(s) : Signal #1: ECD1A.ch Signal #2: ECD2B.ch
 Acq On : 17 May 2022 11:41
 Operator : YP\AJ
 Sample : N2766-03MSD
 Misc :
 ALS Vial : 11 Sample Multiplier: 1

Instrument :
 ECD_Q
 ClientSampleId :

Integration File signal 1: autoint1.e
 Integration File signal 2: autoint2.e
 Quant Time: May 18 01:29:26 2022
 Quant Method : Z:\pestpcbsrv\HPCHEM1\ECD_Q\Method\PQ050522CLP.M
 Quant Title : GC EXTRACTABLES
 QLast Update : Fri May 06 23:16:57 2022
 Response via : Initial Calibration
 Integrator: ChemStation

Volume Inj. : 1 µl
 Signal #1 Phase : ZB MR1 Signal #2 Phase: ZB MR2
 Signal #1 Info : 30Mx0.32mmx 0.5µm Signal #2 Info : 30M x 0.32mm x 0.25µm

Compound	RT#1	RT#2	Resp#1	Resp#2	ng/ml	ng/ml
System Monitoring Compounds						
1) SA Tetrachlo...	4.521	3.741	652.9E6	246.1E6	19.108	18.499
2) SA Decachlor...	10.279	8.656	1360.4E6	480.0E6	45.744	44.131
Target Compounds						
3) L1 AR-1016-1	5.697	4.804	275.9E6	139.5E6	412.104	406.974
4) L1 AR-1016-2	5.719	4.822	583.0E6	267.4E6	387.089	391.670
5) L1 AR-1016-3	5.779	4.994	392.5E6	115.5E6	393.168	396.489
6) L1 AR-1016-4	5.881	5.031	309.6E6	98540298	396.525	375.248
7) L1 AR-1016-5	6.167	5.241	249.0E6	119.8E6	397.955	377.983
8) L2 AR-1221-1	4.740	3.949	51401967	14711665	136.825	101.795 #
9) L2 AR-1221-2	4.825	4.035	51408154	20278594	192.990	204.669
10) L2 AR-1221-3	4.901	4.109	196.6E6	82158795	218.656	233.779
11) L3 AR-1232-1	4.901	4.109	196.6E6	82158795	254.152	257.044
12) L3 AR-1232-2	5.423	4.822	306.9E6	267.4E6	563.487	746.612 #
13) L3 AR-1232-3	5.719	4.994	583.0E6	115.5E6	714.270	696.716
14) L3 AR-1232-4	5.881	5.073	309.6E6	118.4E6	802.960	792.275
15) L3 AR-1232-5	5.961	5.241	208.7E6	119.8E6	378.449	788.931 #
16) L4 AR-1242-1	5.697	4.804	275.9E6	139.5E6	467.447	462.393
17) L4 AR-1242-2	5.719	4.822	583.0E6	267.4E6	440.788	435.010
18) L4 AR-1242-3	5.779	4.994	392.5E6	115.5E6	421.334	434.004
19) L4 AR-1242-4	5.881	5.073	309.6E6	118.4E6	445.206	430.031
20) L4 AR-1242-5	6.615	5.585	47492507	101.7E6	68.541	286.728 #
21) L5 AR-1248-1	5.697	4.804	275.9E6	139.5E6	614.299	612.091
22) L5 AR-1248-2	5.961	5.031	208.7E6	98540298	263.020	249.544
23) L5 AR-1248-3	6.167	5.073	249.0E6	118.4E6	266.618	289.419
24) L5 AR-1248-4	6.573	5.241	40490321	119.8E6	39.623	248.944 #
25) L5 AR-1248-5	6.615	5.631	47492507	16270534	41.842	32.597
26) L6 AR-1254-1	6.542	5.585	186.3E6	101.7E6	209.222	133.676 #
27) L6 AR-1254-2	6.758	5.730	220.9E6	95812254	157.426	155.770
28) L6 AR-1254-3	7.130	6.140	123.4E6	166.8E6	73.649	161.433 #
29) L6 AR-1254-4	7.415	6.357	93809231	15433962	85.196	20.324 #
30) L6 AR-1254-5	7.831	6.762	820.1E6	339.9E6	658.303	364.254 #
31) L7 AR-1260-1	7.287	6.253	448.7E6	245.4E6	450.535	414.481
32) L7 AR-1260-2	7.545	6.439	697.5E6	308.1E6	586.927	426.723 #
33) L7 AR-1260-3	7.831	6.589	820.1E6	279.6E6	572.298	380.929 #
34) L7 AR-1260-4	8.132	7.054	527.4E6	198.9E6	490.798	349.220 #
35) L7 AR-1260-5	8.460	7.294	1381.7E6	520.6E6	614.615	373.382 #
36) L8 AR-1262-1	7.901	6.762	591.4E6	339.9E6	421.022	722.644 #
37) L8 AR-1262-2	8.460	7.294	1381.7E6	520.6E6	497.759	291.087 #
38) L8 AR-1262-3	8.772	7.572	292.8E6	105.0E6	225.977	145.633 #
39) L8 AR-1262-4	8.849	7.635	510.4E6	367.2E6	493.382	282.727 #
40) L8 AR-1262-5	9.535	8.126	341.8E6	111.9E6	282.320	197.458 #
41) L9 AR-1268-1	8.772	7.572	292.8E6	105.0E6	86.601	52.436 #

Data Path : Z:\pestpcbsrv\HPCHEM1\ECD_Q\Data\PQ051722\
 Data File : PQ057602.D
 Signal(s) : Signal #1: ECD1A.ch Signal #2: ECD2B.ch
 Acq On : 17 May 2022 11:41
 Operator : YP\AJ
 Sample : N2766-03MSD
 Misc :
 ALS Vial : 11 Sample Multiplier: 1

Instrument :
 ECD_Q
 ClientSampleId :

Integration File signal 1: autoint1.e
 Integration File signal 2: autoint2.e
 Quant Time: May 18 01:29:26 2022
 Quant Method : Z:\pestpcbsrv\HPCHEM1\ECD_Q\Method\PQ050522CLP.M
 Quant Title : GC EXTRACTABLES
 QLast Update : Fri May 06 23:16:57 2022
 Response via : Initial Calibration
 Integrator: ChemStation

Volume Inj. : 1 µl
 Signal #1 Phase : ZB MR1 Signal #2 Phase: ZB MR2
 Signal #1 Info : 30Mx0.32mmx 0.5µm Signal #2 Info : 30M x 0.32mm x 0.25µm

	Compound	RT#1	RT#2	Resp#1	Resp#2	ng/ml	ng/ml
42)	L9 AR-1268-2	8.849	7.635	510.4E6	367.2E6	138.295	200.530 #
43)	L9 AR-1268-3	9.093	7.837	27999581	9487284	8.829	6.240 #
44)	L9 AR-1268-4	9.535	8.126	341.8E6	111.9E6	260.313	179.578 #
45)	L9 AR-1268-5	9.947	8.412	114.5E6	37768809	10.111	7.827

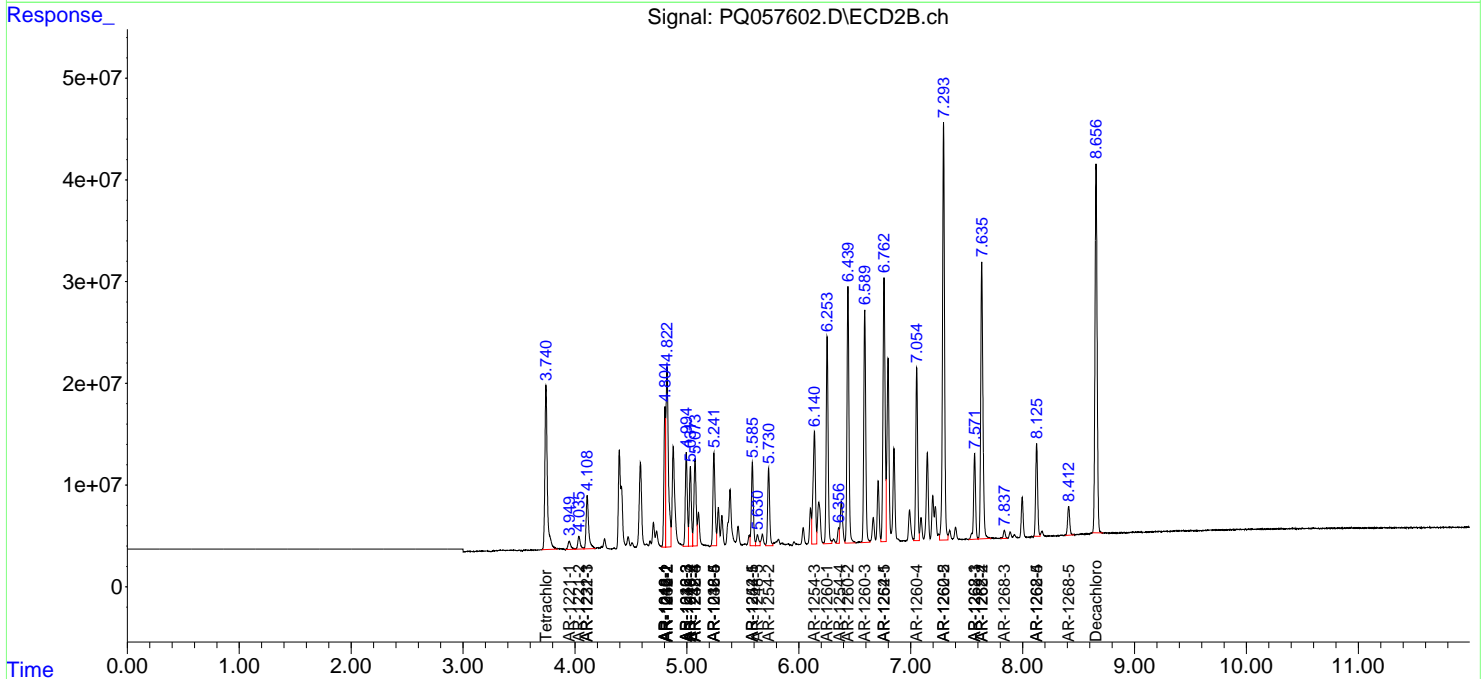
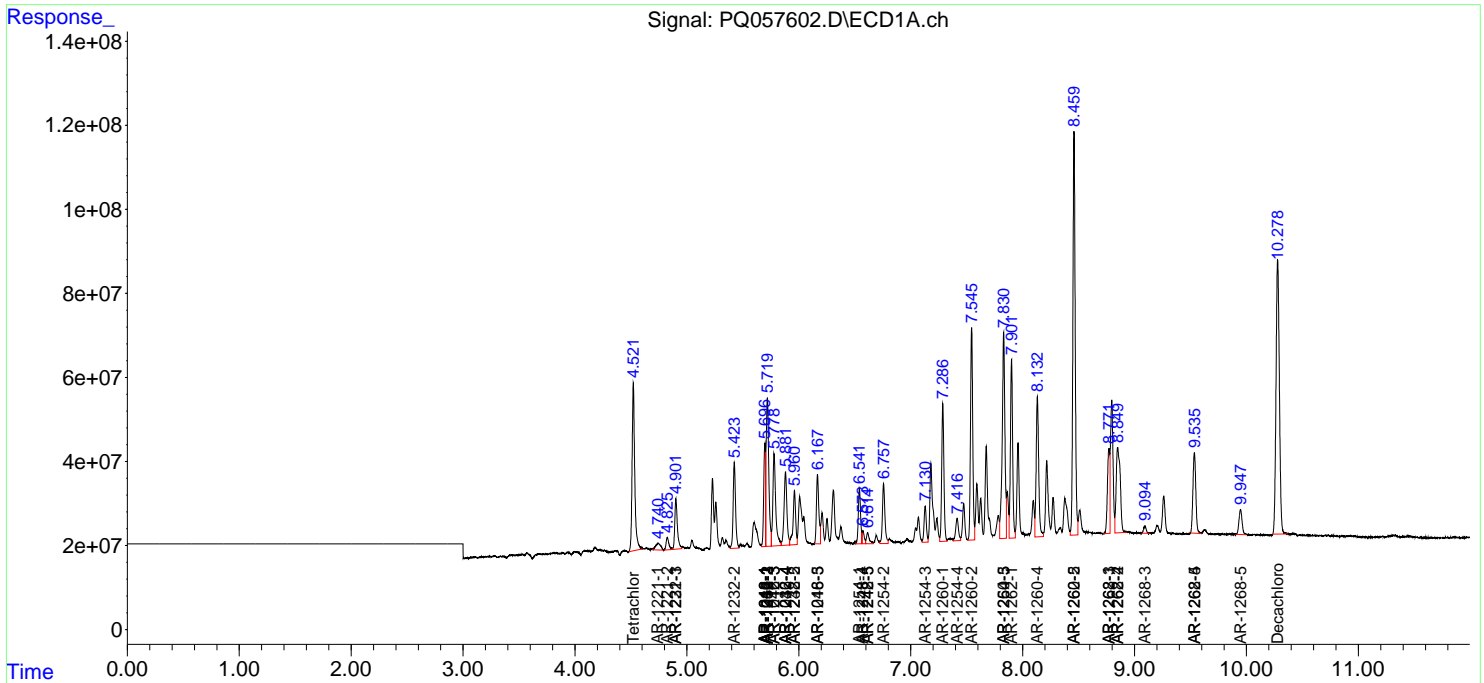
(f)=RT Delta > 1/2 Window (#)=Amounts differ by > 25% (m)=manual int.

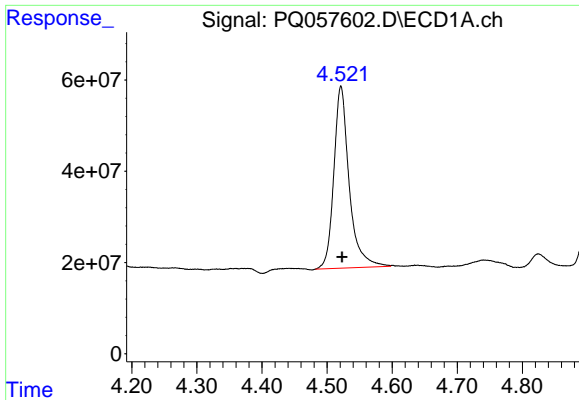
Data Path : Z:\pestpcbsrv\HPCHEM1\ECD_Q\Data\PQ051722\
 Data File : PQ057602.D
 Signal(s) : Signal #1: ECD1A.ch Signal #2: ECD2B.ch
 Acq On : 17 May 2022 11:41
 Operator : YP\AJ
 Sample : N2766-03MSD
 Misc :
 ALS Vial : 11 Sample Multiplier: 1

Instrument :
 ECD_Q
 ClientSampleId :

Integration File signal 1: autoint1.e
 Integration File signal 2: autoint2.e
 Quant Time: May 18 01:29:26 2022
 Quant Method : Z:\pestpcbsrv\HPCHEM1\ECD_Q\Method\PQ050522CLP.M
 Quant Title : GC EXTRACTABLES
 QLast Update : Fri May 06 23:16:57 2022
 Response via : Initial Calibration
 Integrator: ChemStation

Volume Inj. : 1 µl
 Signal #1 Phase : ZB MR1 Signal #2 Phase: ZB MR2
 Signal #1 Info : 30Mx0.32mmx 0.5µm Signal #2 Info : 30M x 0.32mm x 0.25µm

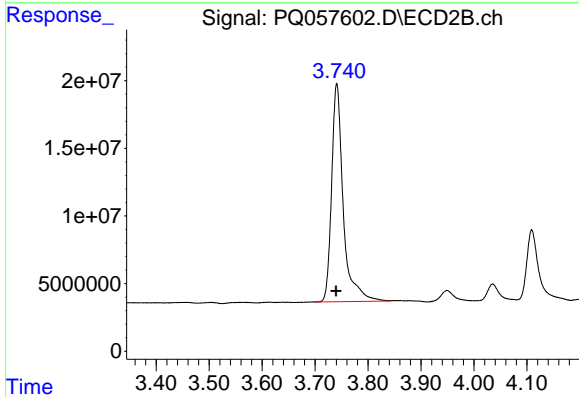




#1 Tetrachloro-m-xylene

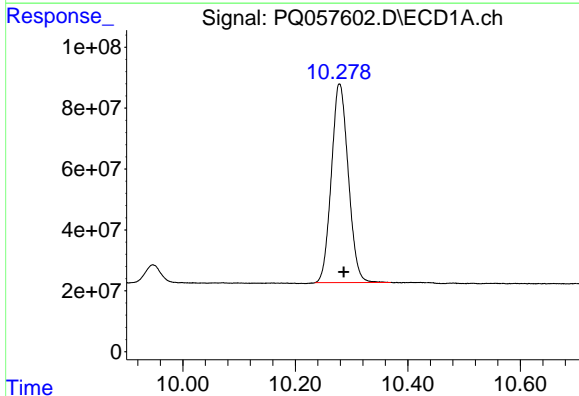
R.T.: 4.521 min
 Delta R.T.: -0.002 min
 Response: 652928462
 Conc: 19.11 ng/ml

Instrument :
 ECD_Q
 ClientSampleId :



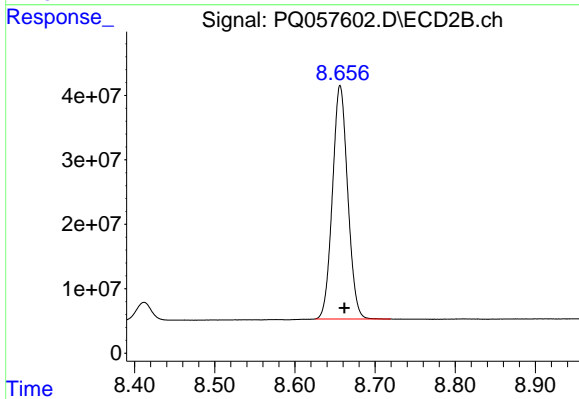
#1 Tetrachloro-m-xylene

R.T.: 3.741 min
 Delta R.T.: 0.001 min
 Response: 246050341
 Conc: 18.50 ng/ml



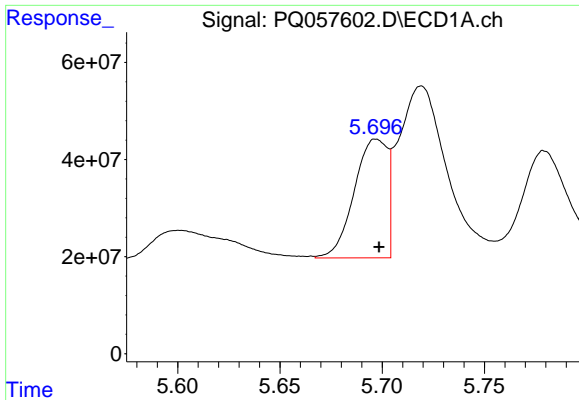
#2 Decachlorobiphenyl

R.T.: 10.279 min
 Delta R.T.: -0.008 min
 Response: 1360369629
 Conc: 45.74 ng/ml



#2 Decachlorobiphenyl

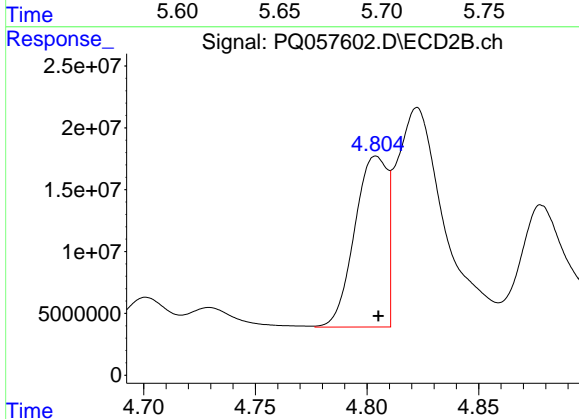
R.T.: 8.656 min
 Delta R.T.: -0.005 min
 Response: 480027378
 Conc: 44.13 ng/ml



#3 AR-1016-1

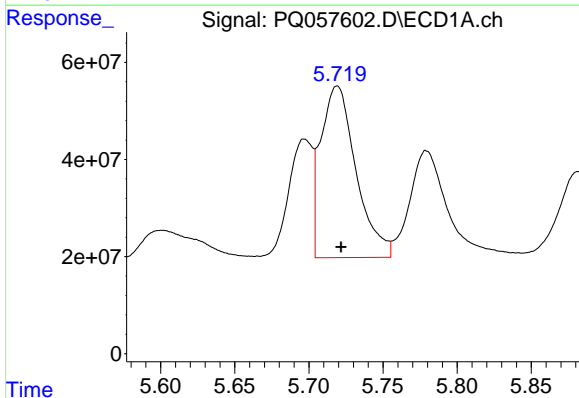
R.T.: 5.697 min
 Delta R.T.: -0.002 min
 Response: 275948994
 Conc: 412.10 ng/ml

Instrument :
 ECD_Q
 ClientSampleId :



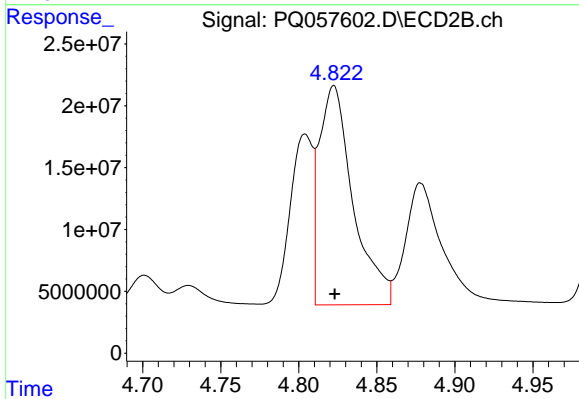
#3 AR-1016-1

R.T.: 4.804 min
 Delta R.T.: 0.000 min
 Response: 139549110
 Conc: 406.97 ng/ml



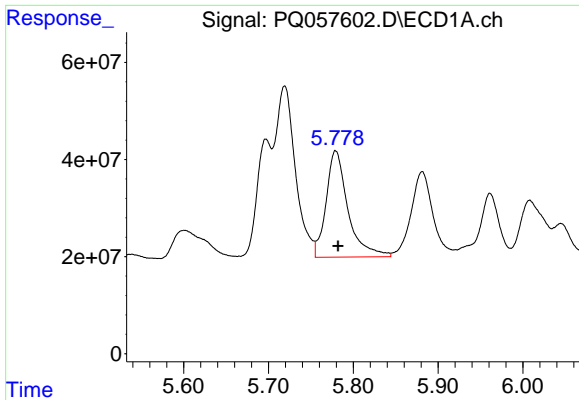
#4 AR-1016-2

R.T.: 5.719 min
 Delta R.T.: -0.003 min
 Response: 583011563
 Conc: 387.09 ng/ml



#4 AR-1016-2

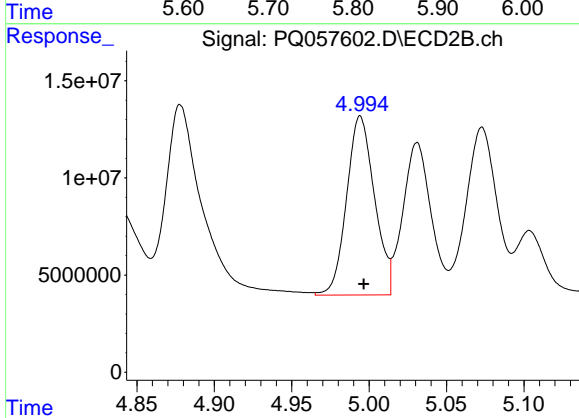
R.T.: 4.822 min
 Delta R.T.: 0.000 min
 Response: 267404842
 Conc: 391.67 ng/ml



#5 AR-1016-3

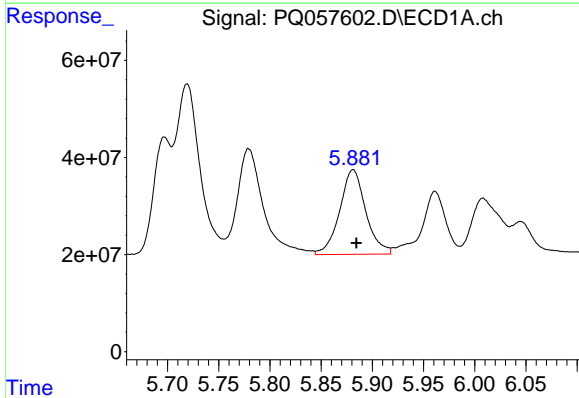
R.T.: 5.779 min
 Delta R.T.: -0.003 min
 Response: 392471706
 Conc: 393.17 ng/ml

Instrument :
 ECD_Q
 ClientSampleId :



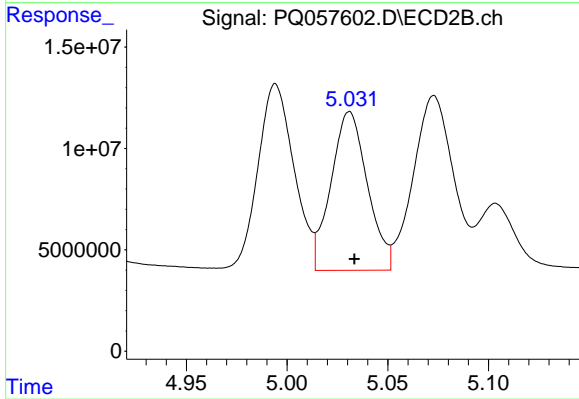
#5 AR-1016-3

R.T.: 4.994 min
 Delta R.T.: -0.002 min
 Response: 115459169
 Conc: 396.49 ng/ml



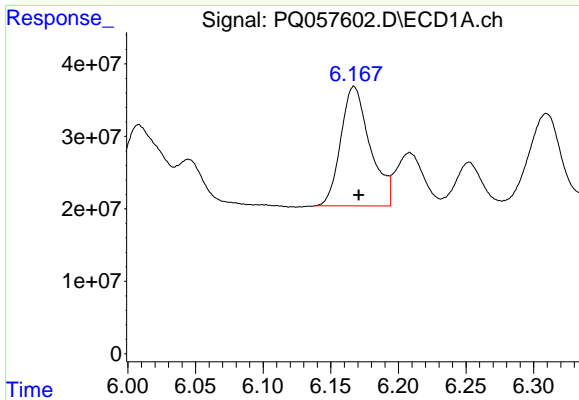
#6 AR-1016-4

R.T.: 5.881 min
 Delta R.T.: -0.003 min
 Response: 309576612
 Conc: 396.52 ng/ml



#6 AR-1016-4

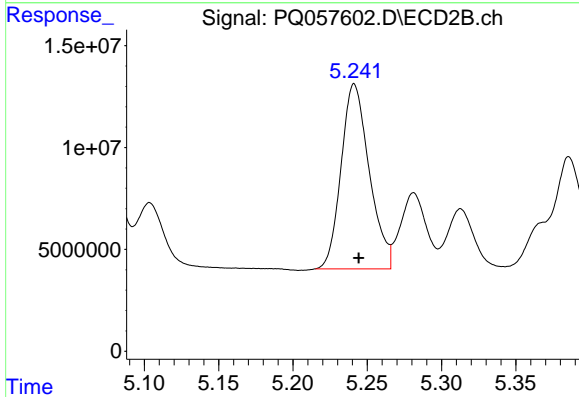
R.T.: 5.031 min
 Delta R.T.: -0.002 min
 Response: 98540298
 Conc: 375.25 ng/ml



#7 AR-1016-5

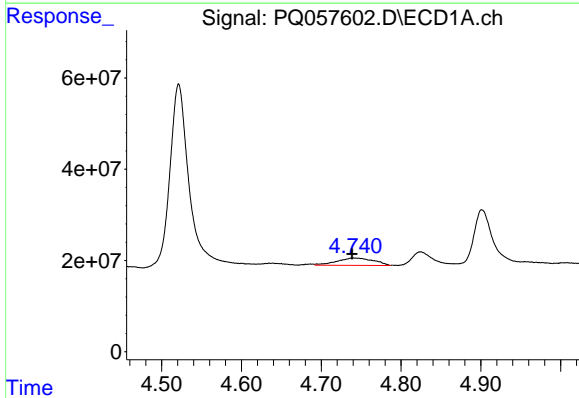
R.T.: 6.167 min
 Delta R.T.: -0.003 min
 Response: 248960395
 Conc: 397.96 ng/ml

Instrument :
 ECD_Q
 ClientSampleId :



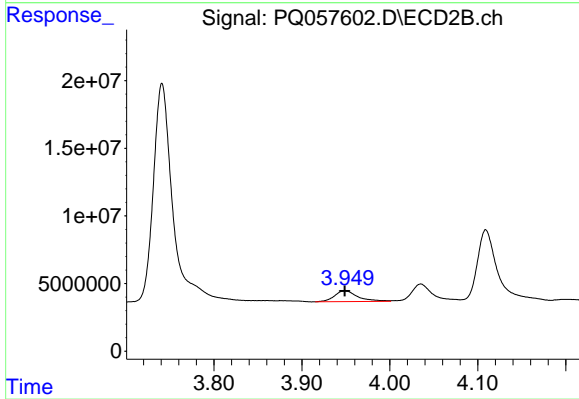
#7 AR-1016-5

R.T.: 5.241 min
 Delta R.T.: -0.003 min
 Response: 119755509
 Conc: 377.98 ng/ml



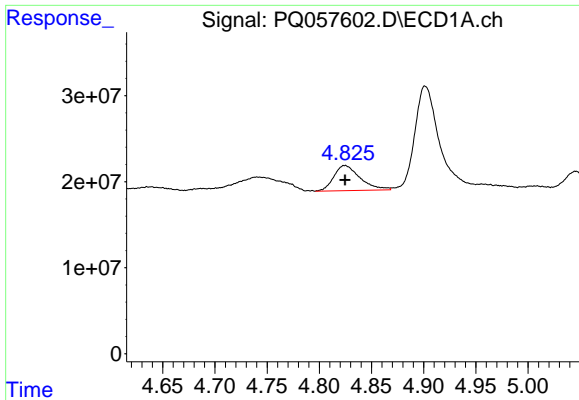
#8 AR-1221-1

R.T.: 4.740 min
 Delta R.T.: 0.002 min
 Response: 51401967
 Conc: 136.82 ng/ml



#8 AR-1221-1

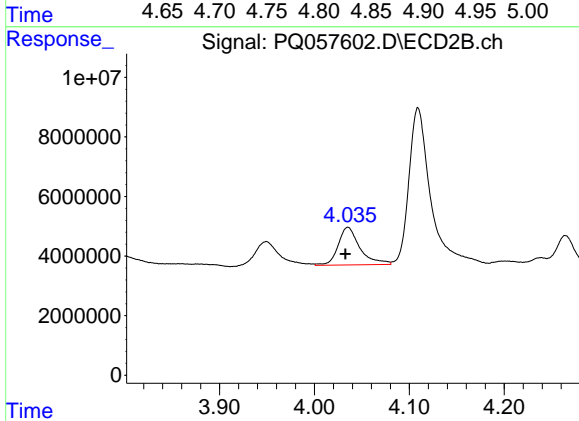
R.T.: 3.949 min
 Delta R.T.: 0.000 min
 Response: 14711665
 Conc: 101.79 ng/ml



#9 AR-1221-2

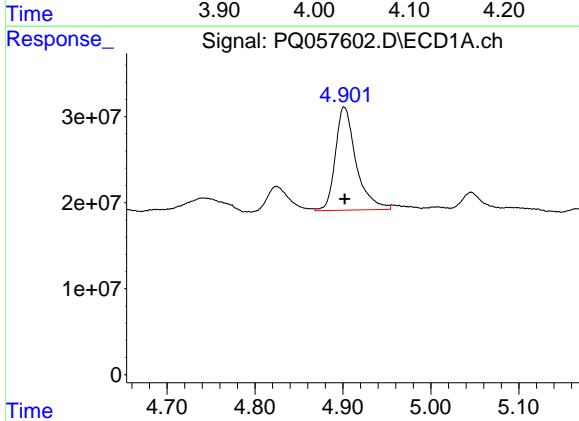
R.T.: 4.825 min
 Delta R.T.: 0.000 min
 Response: 51408154
 Conc: 192.99 ng/ml

Instrument :
 ECD_Q
 ClientSampleId :



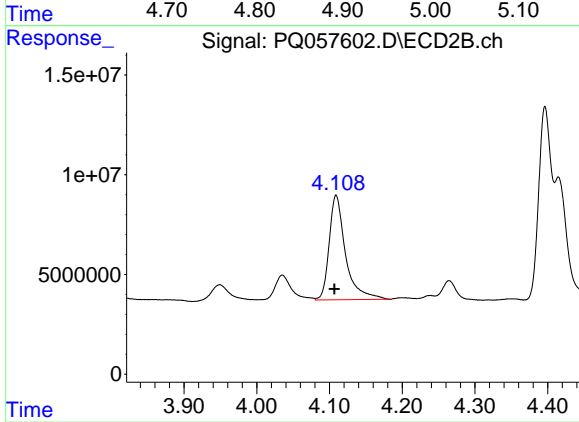
#9 AR-1221-2

R.T.: 4.035 min
 Delta R.T.: 0.003 min
 Response: 20278594
 Conc: 204.67 ng/ml



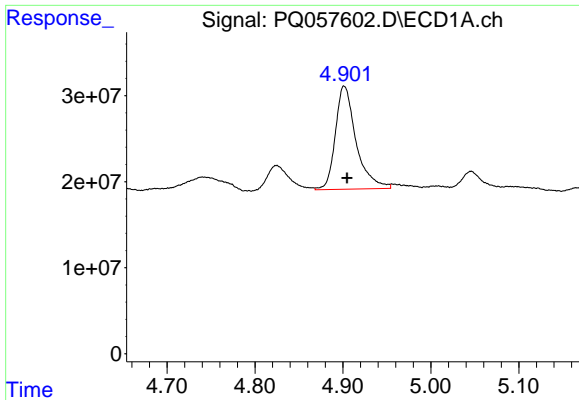
#10 AR-1221-3

R.T.: 4.901 min
 Delta R.T.: 0.000 min
 Response: 196571158
 Conc: 218.66 ng/ml



#10 AR-1221-3

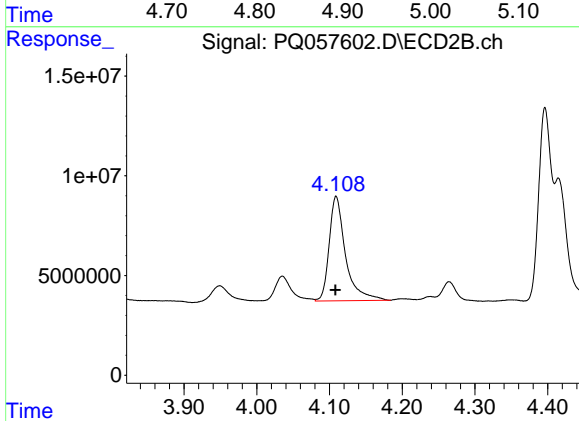
R.T.: 4.109 min
 Delta R.T.: 0.002 min
 Response: 82158795
 Conc: 233.78 ng/ml



#11 AR-1232-1

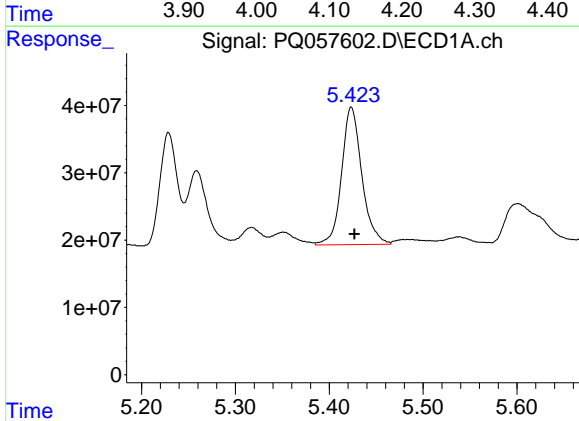
R.T.: 4.901 min
 Delta R.T.: -0.003 min
 Response: 196571158
 Conc: 254.15 ng/ml

Instrument :
 ECD_Q
 ClientSampleId :



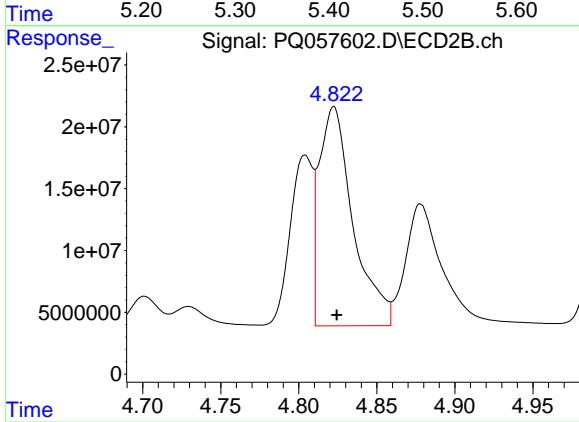
#11 AR-1232-1

R.T.: 4.109 min
 Delta R.T.: 0.001 min
 Response: 82158795
 Conc: 257.04 ng/ml



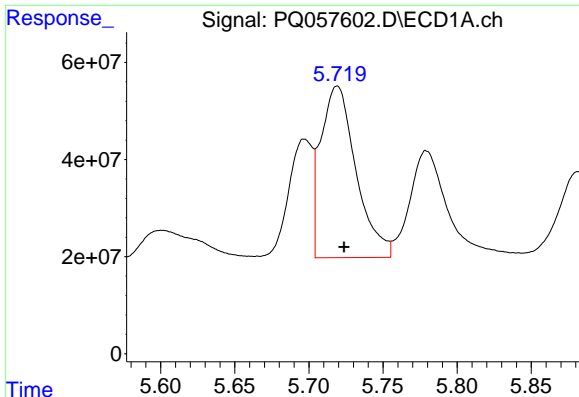
#12 AR-1232-2

R.T.: 5.423 min
 Delta R.T.: -0.003 min
 Response: 306938515
 Conc: 563.49 ng/ml



#12 AR-1232-2

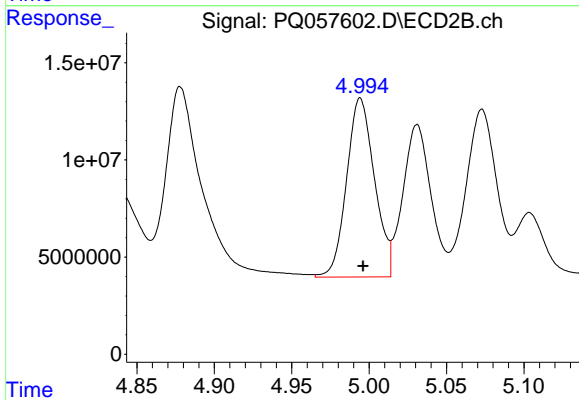
R.T.: 4.822 min
 Delta R.T.: -0.002 min
 Response: 267404842
 Conc: 746.61 ng/ml



#13 AR-1232-3

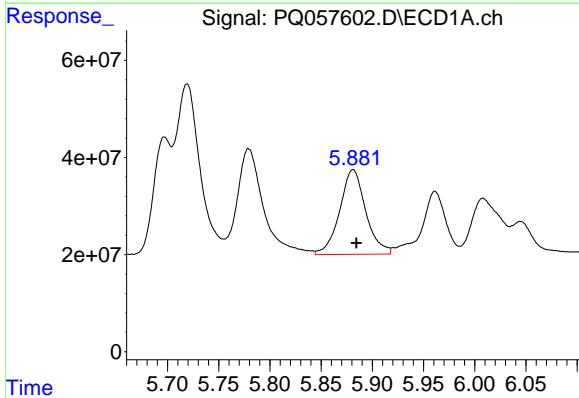
R.T.: 5.719 min
 Delta R.T.: -0.005 min
 Response: 583011563
 Conc: 714.27 ng/ml

Instrument :
 ECD_Q
 ClientSampleId :



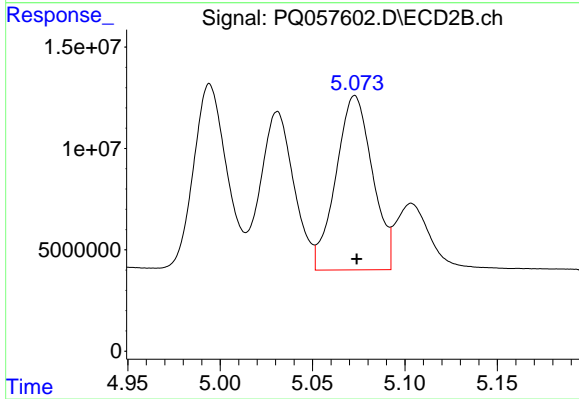
#13 AR-1232-3

R.T.: 4.994 min
 Delta R.T.: -0.002 min
 Response: 115459169
 Conc: 696.72 ng/ml



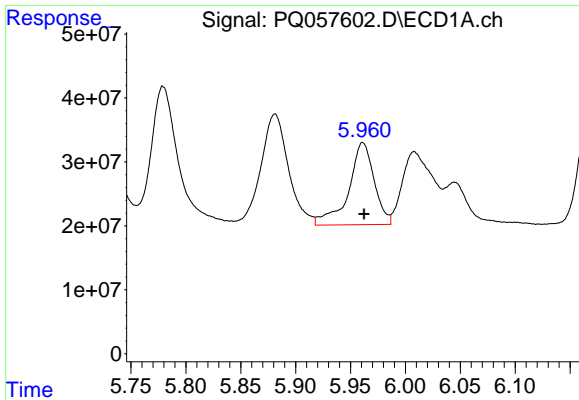
#14 AR-1232-4

R.T.: 5.881 min
 Delta R.T.: -0.003 min
 Response: 309576612
 Conc: 802.96 ng/ml



#14 AR-1232-4

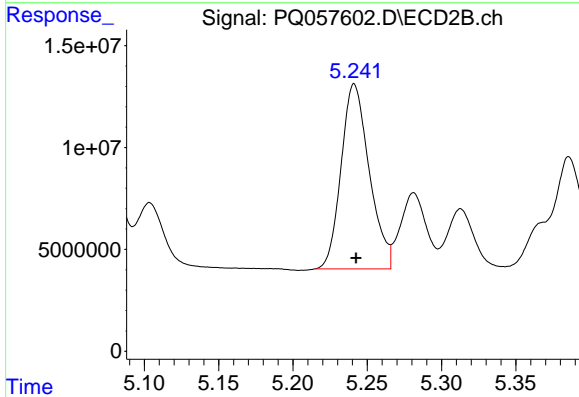
R.T.: 5.073 min
 Delta R.T.: -0.001 min
 Response: 118386255
 Conc: 792.27 ng/ml



#15 AR-1232-5

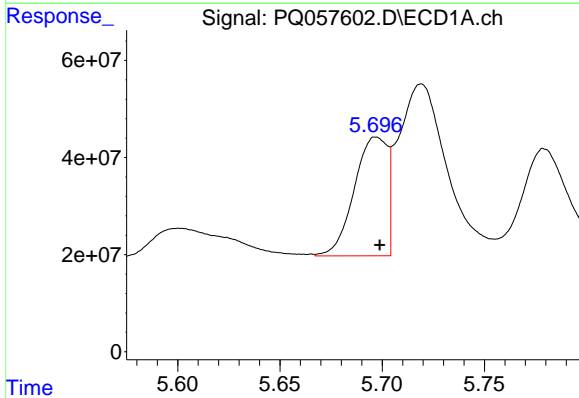
R.T.: 5.961 min
 Delta R.T.: -0.001 min
 Response: 208703724
 Conc: 378.45 ng/ml

Instrument :
 ECD_Q
 ClientSampleId :



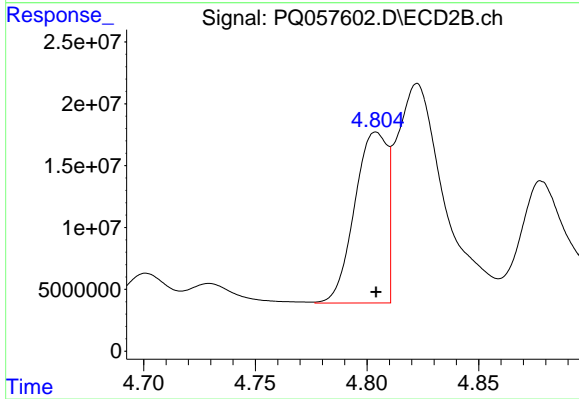
#15 AR-1232-5

R.T.: 5.241 min
 Delta R.T.: -0.001 min
 Response: 119755509
 Conc: 788.93 ng/ml



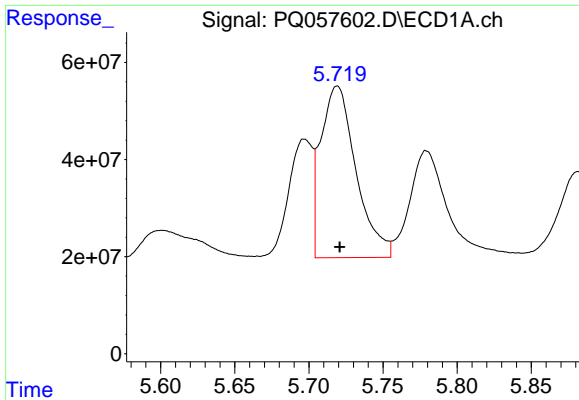
#16 AR-1242-1

R.T.: 5.697 min
 Delta R.T.: -0.002 min
 Response: 275948994
 Conc: 467.45 ng/ml



#16 AR-1242-1

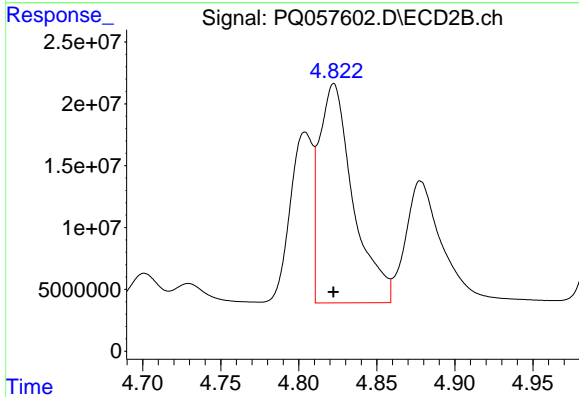
R.T.: 4.804 min
 Delta R.T.: 0.000 min
 Response: 139549110
 Conc: 462.39 ng/ml



#17 AR-1242-2

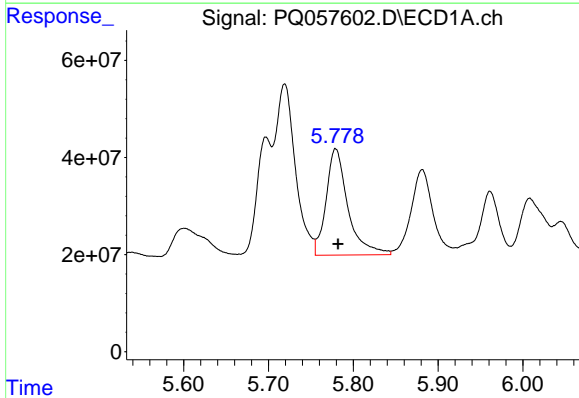
R.T.: 5.719 min
 Delta R.T.: -0.002 min
 Response: 583011563
 Conc: 440.79 ng/ml

Instrument :
 ECD_Q
 ClientSampleId :



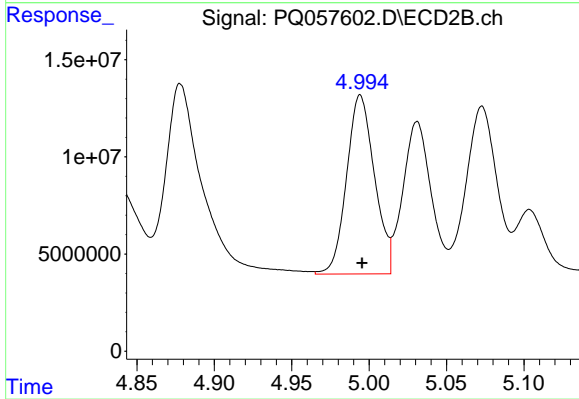
#17 AR-1242-2

R.T.: 4.822 min
 Delta R.T.: 0.000 min
 Response: 267404842
 Conc: 435.01 ng/ml



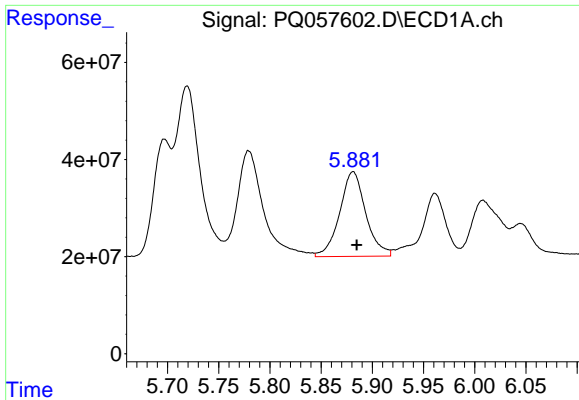
#18 AR-1242-3

R.T.: 5.779 min
 Delta R.T.: -0.003 min
 Response: 392471706
 Conc: 421.33 ng/ml



#18 AR-1242-3

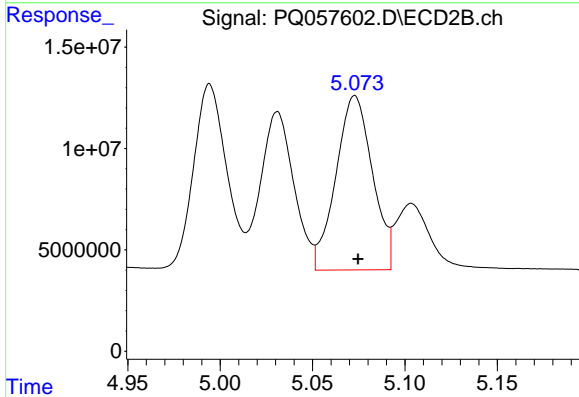
R.T.: 4.994 min
 Delta R.T.: -0.001 min
 Response: 115459169
 Conc: 434.00 ng/ml



#19 AR-1242-4

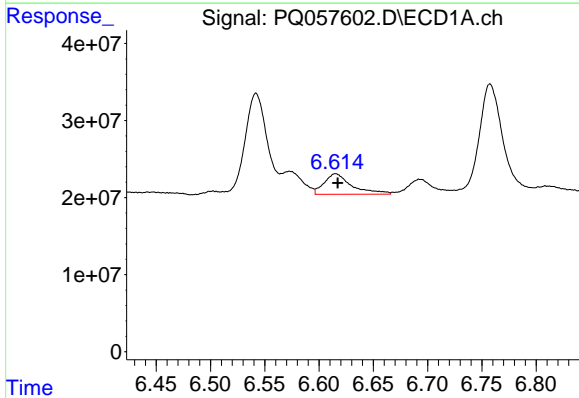
R.T.: 5.881 min
 Delta R.T.: -0.003 min
 Response: 309576612
 Conc: 445.21 ng/ml

Instrument :
 ECD_Q
 ClientSampleId :



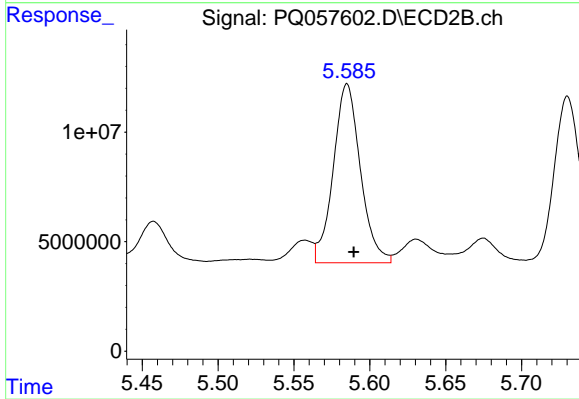
#19 AR-1242-4

R.T.: 5.073 min
 Delta R.T.: -0.002 min
 Response: 118386255
 Conc: 430.03 ng/ml



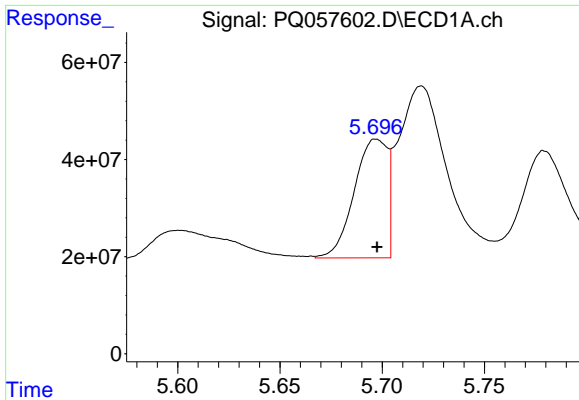
#20 AR-1242-5

R.T.: 6.615 min
 Delta R.T.: -0.002 min
 Response: 47492507
 Conc: 68.54 ng/ml



#20 AR-1242-5

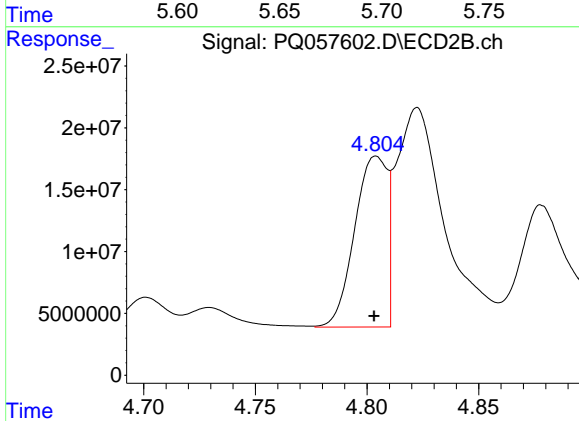
R.T.: 5.585 min
 Delta R.T.: -0.004 min
 Response: 101709584
 Conc: 286.73 ng/ml



#21 AR-1248-1

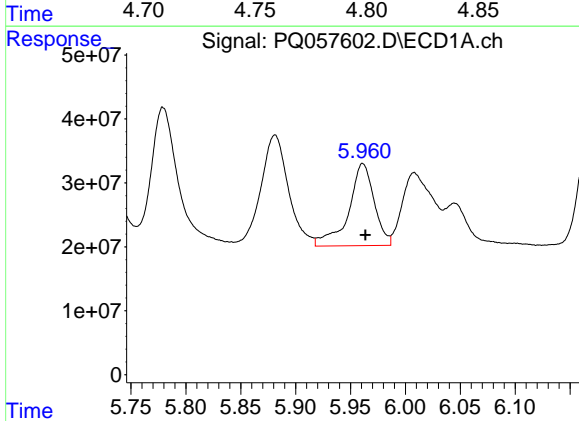
R.T.: 5.697 min
 Delta R.T.: 0.000 min
 Response: 275948994
 Conc: 614.30 ng/ml

Instrument :
 ECD_Q
 ClientSampleId :



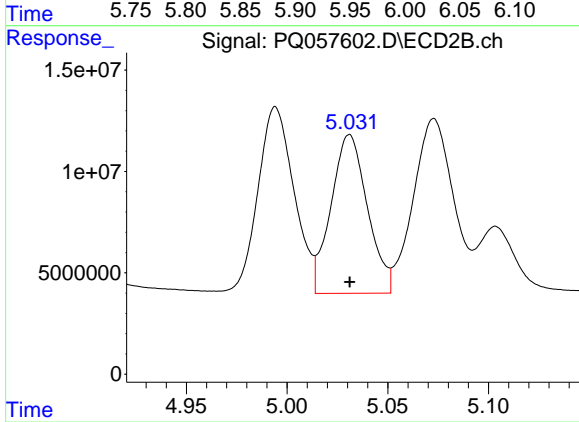
#21 AR-1248-1

R.T.: 4.804 min
 Delta R.T.: 0.000 min
 Response: 139549110
 Conc: 612.09 ng/ml



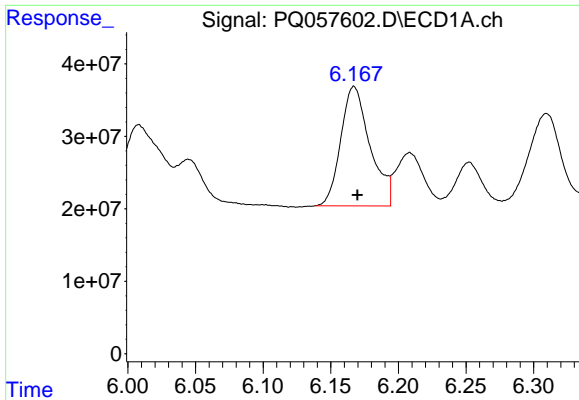
#22 AR-1248-2

R.T.: 5.961 min
 Delta R.T.: -0.003 min
 Response: 208703724
 Conc: 263.02 ng/ml



#22 AR-1248-2

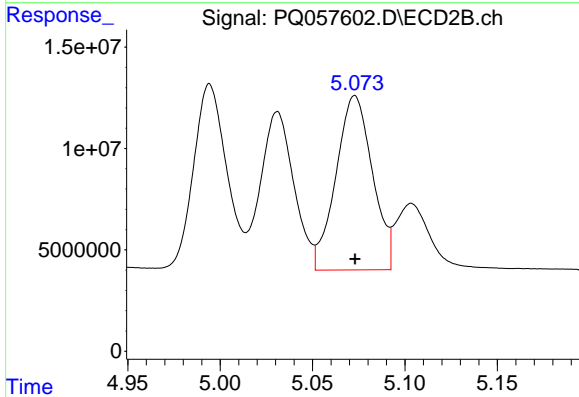
R.T.: 5.031 min
 Delta R.T.: 0.000 min
 Response: 98540298
 Conc: 249.54 ng/ml



#23 AR-1248-3

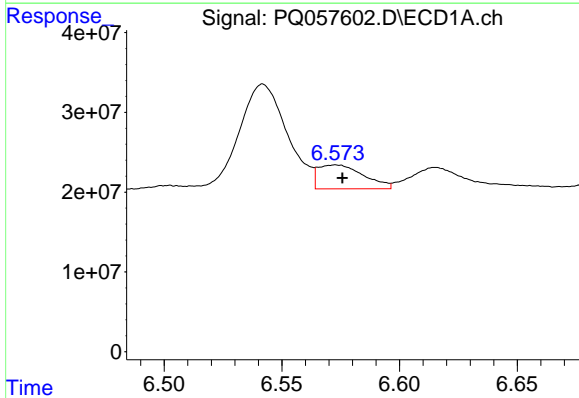
R.T.: 6.167 min
 Delta R.T.: -0.003 min
 Response: 248960395
 Conc: 266.62 ng/ml

Instrument :
 ECD_Q
 ClientSampleId :



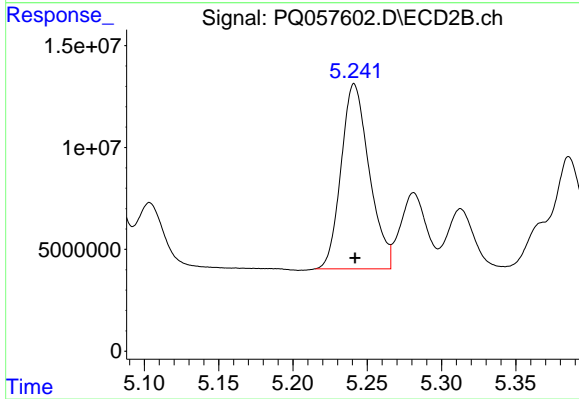
#23 AR-1248-3

R.T.: 5.073 min
 Delta R.T.: 0.000 min
 Response: 118386255
 Conc: 289.42 ng/ml



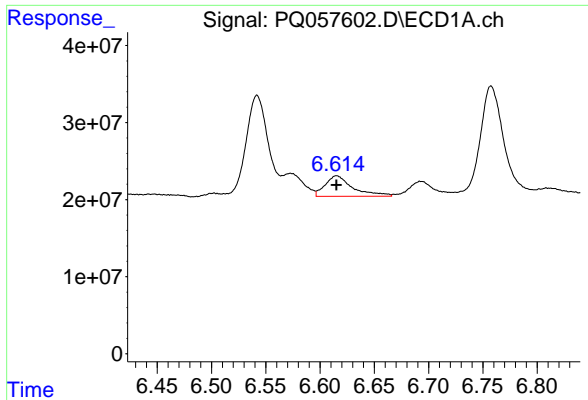
#24 AR-1248-4

R.T.: 6.573 min
 Delta R.T.: -0.003 min
 Response: 40490321
 Conc: 39.62 ng/ml



#24 AR-1248-4

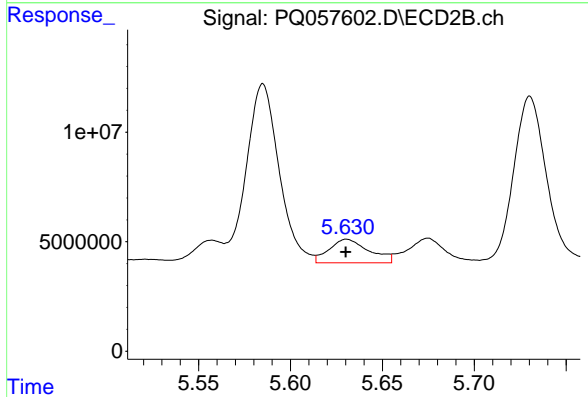
R.T.: 5.241 min
 Delta R.T.: 0.000 min
 Response: 119755509
 Conc: 248.94 ng/ml



#25 AR-1248-5

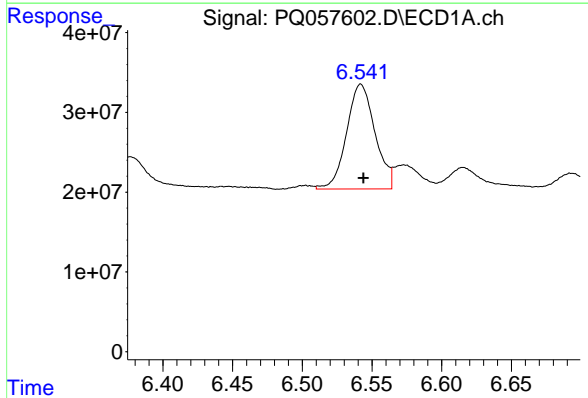
R.T.: 6.615 min
 Delta R.T.: 0.000 min
 Response: 47492507
 Conc: 41.84 ng/ml

Instrument :
 ECD_Q
 ClientSampleId :



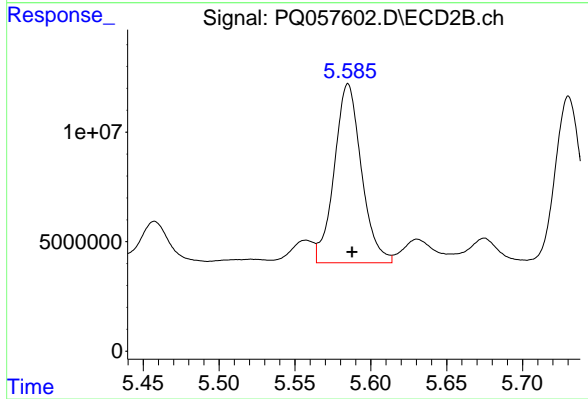
#25 AR-1248-5

R.T.: 5.631 min
 Delta R.T.: 0.000 min
 Response: 16270534
 Conc: 32.60 ng/ml



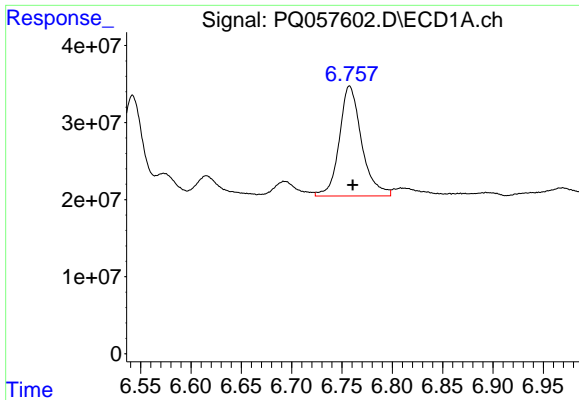
#26 AR-1254-1

R.T.: 6.542 min
 Delta R.T.: -0.002 min
 Response: 186324759
 Conc: 209.22 ng/ml



#26 AR-1254-1

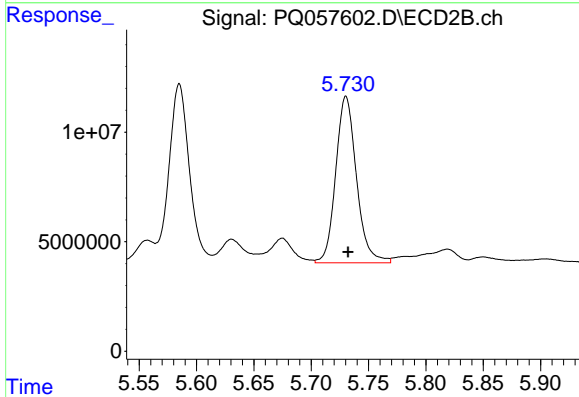
R.T.: 5.585 min
 Delta R.T.: -0.003 min
 Response: 101709584
 Conc: 133.68 ng/ml



#27 AR-1254-2

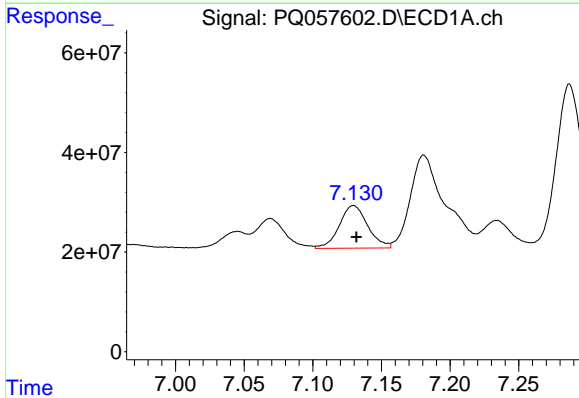
R.T.: 6.758 min
 Delta R.T.: -0.003 min
 Response: 220909380
 Conc: 157.43 ng/ml

Instrument :
 ECD_Q
 ClientSampleId :



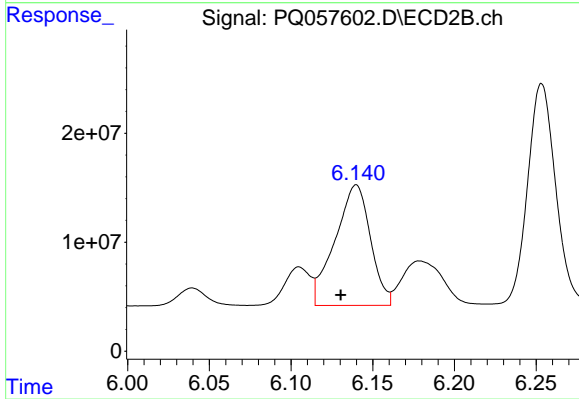
#27 AR-1254-2

R.T.: 5.730 min
 Delta R.T.: -0.002 min
 Response: 95812254
 Conc: 155.77 ng/ml



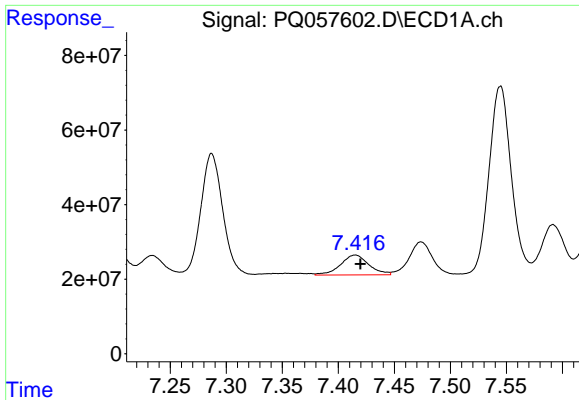
#28 AR-1254-3

R.T.: 7.130 min
 Delta R.T.: -0.002 min
 Response: 123374122
 Conc: 73.65 ng/ml



#28 AR-1254-3

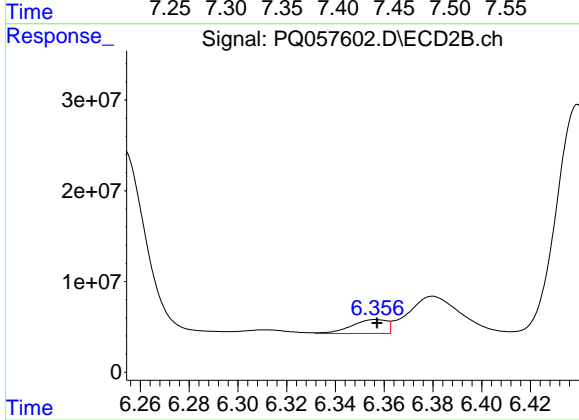
R.T.: 6.140 min
 Delta R.T.: 0.009 min
 Response: 166794355
 Conc: 161.43 ng/ml



#29 AR-1254-4

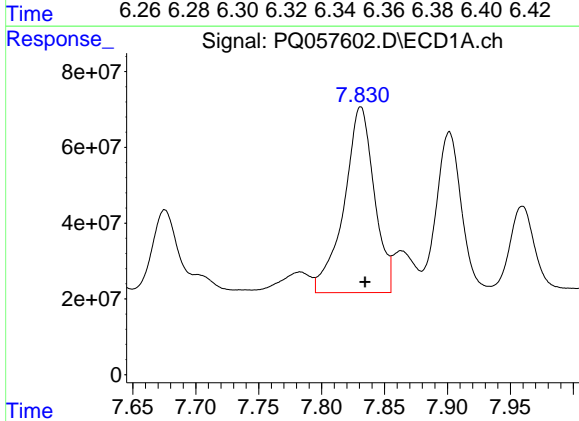
R.T.: 7.415 min
Delta R.T.: -0.005 min
Response: 93809231
Conc: 85.20 ng/ml

Instrument :
ECD_Q
ClientSampleId :



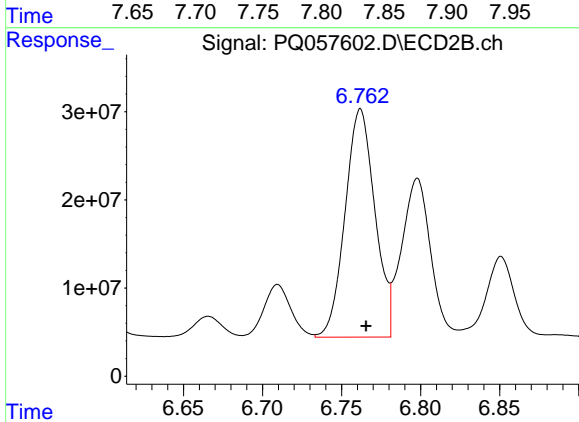
#29 AR-1254-4

R.T.: 6.357 min
Delta R.T.: 0.000 min
Response: 15433962
Conc: 20.32 ng/ml



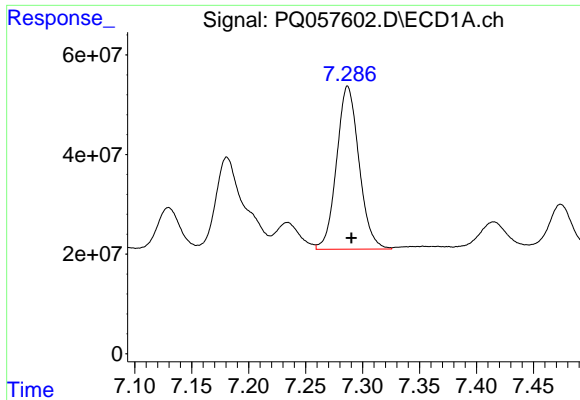
#30 AR-1254-5

R.T.: 7.831 min
Delta R.T.: -0.004 min
Response: 820110147
Conc: 658.30 ng/ml



#30 AR-1254-5

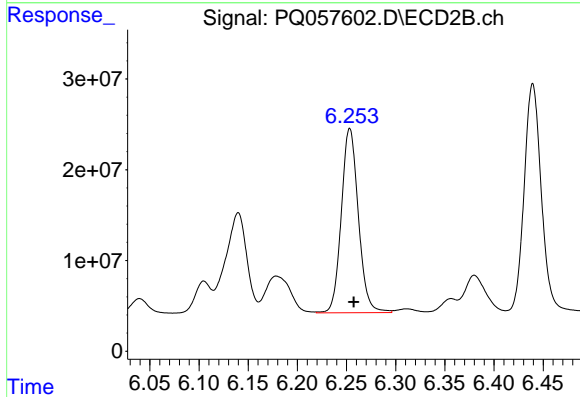
R.T.: 6.762 min
Delta R.T.: -0.004 min
Response: 339874408
Conc: 364.25 ng/ml



#31 AR-1260-1

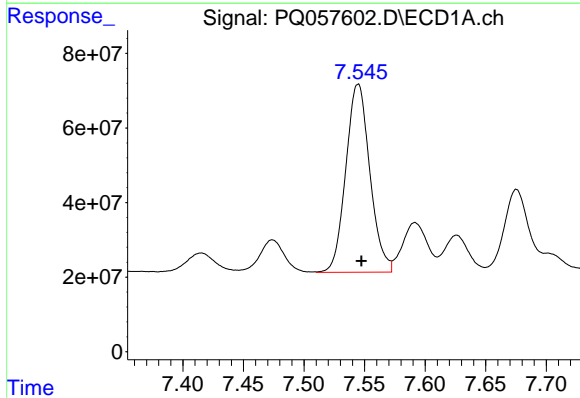
R.T.: 7.287 min
 Delta R.T.: -0.003 min
 Response: 448660273
 Conc: 450.53 ng/ml

Instrument :
 ECD_Q
 ClientSampleId :



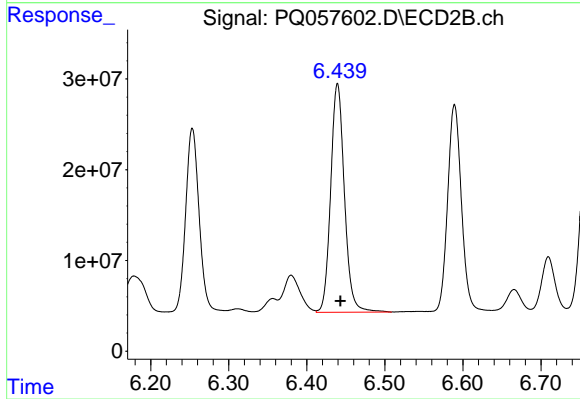
#31 AR-1260-1

R.T.: 6.253 min
 Delta R.T.: -0.004 min
 Response: 245401531
 Conc: 414.48 ng/ml



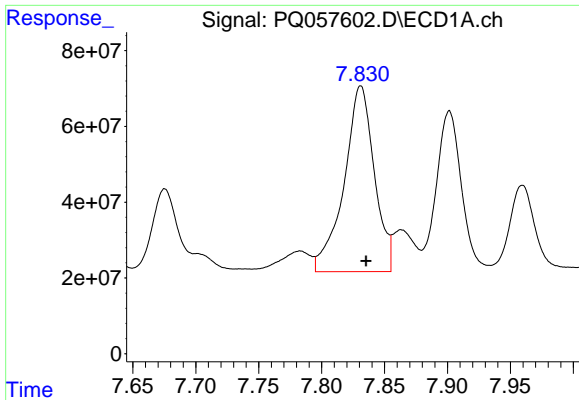
#32 AR-1260-2

R.T.: 7.545 min
 Delta R.T.: -0.003 min
 Response: 697537620
 Conc: 586.93 ng/ml



#32 AR-1260-2

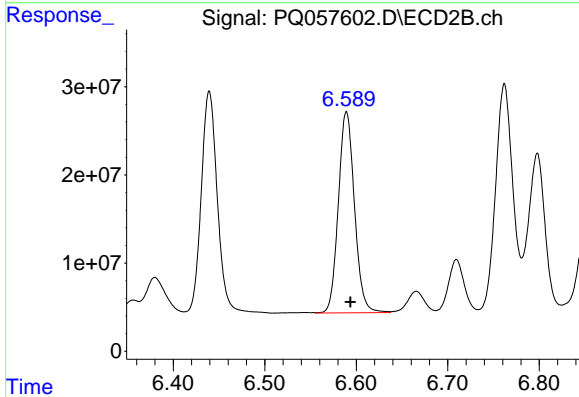
R.T.: 6.439 min
 Delta R.T.: -0.004 min
 Response: 308103059
 Conc: 426.72 ng/ml



#33 AR-1260-3

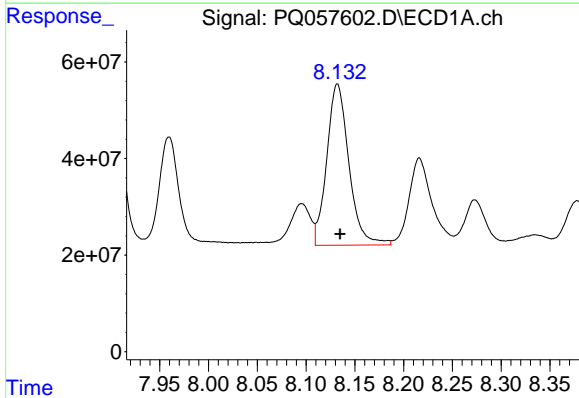
R.T.: 7.831 min
Delta R.T.: -0.004 min
Response: 820110147
Conc: 572.30 ng/ml

Instrument :
ECD_Q
ClientSampleId :



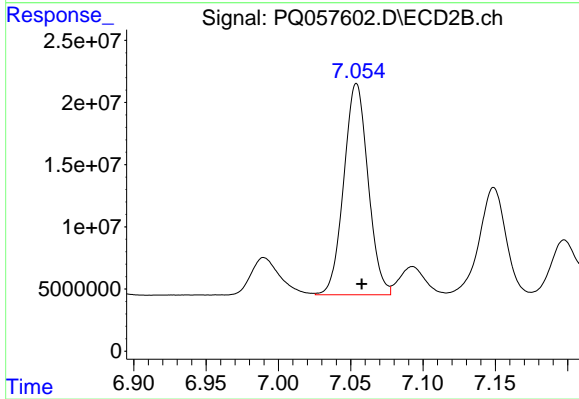
#33 AR-1260-3

R.T.: 6.589 min
Delta R.T.: -0.004 min
Response: 279576561
Conc: 380.93 ng/ml



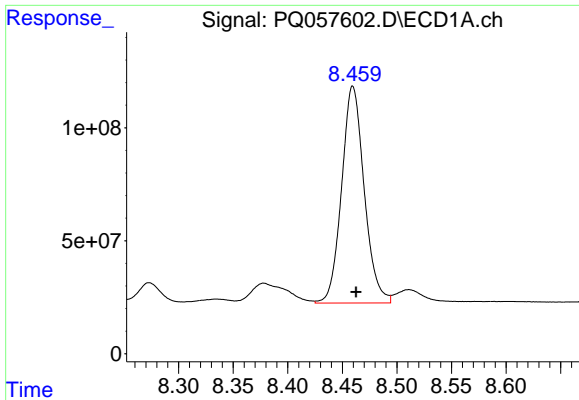
#34 AR-1260-4

R.T.: 8.132 min
Delta R.T.: -0.003 min
Response: 527440194
Conc: 490.80 ng/ml



#34 AR-1260-4

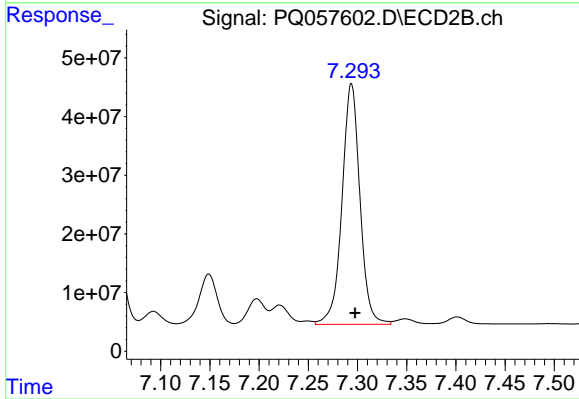
R.T.: 7.054 min
Delta R.T.: -0.004 min
Response: 198930007
Conc: 349.22 ng/ml



#35 AR-1260-5

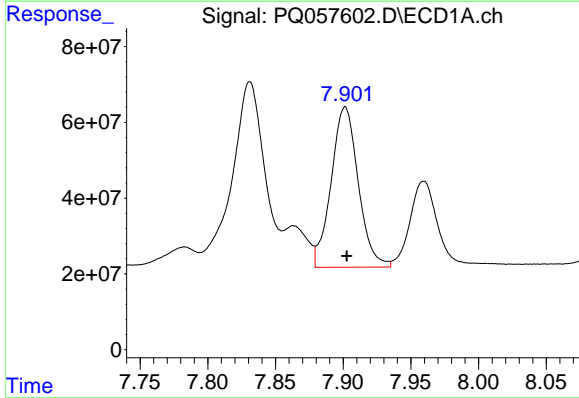
R.T.: 8.460 min
 Delta R.T.: -0.003 min
 Response: 1381680378
 Conc: 614.61 ng/ml

Instrument :
 ECD_Q
 ClientSampleId :



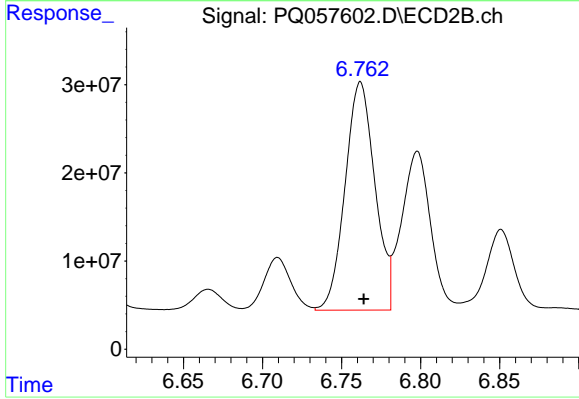
#35 AR-1260-5

R.T.: 7.294 min
 Delta R.T.: -0.004 min
 Response: 520550404
 Conc: 373.38 ng/ml



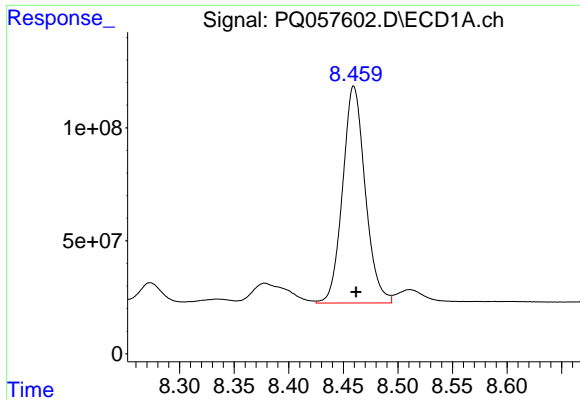
#36 AR-1262-1

R.T.: 7.901 min
 Delta R.T.: -0.001 min
 Response: 591357571
 Conc: 421.02 ng/ml



#36 AR-1262-1

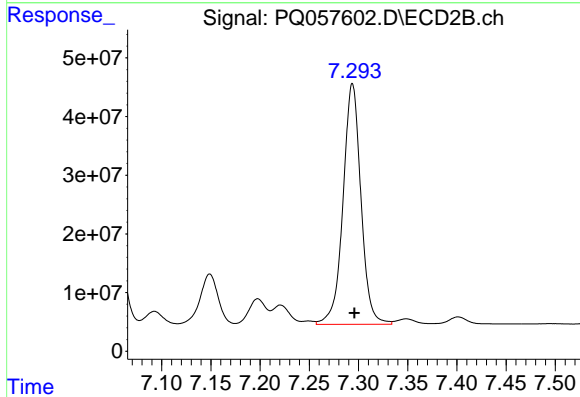
R.T.: 6.762 min
 Delta R.T.: -0.002 min
 Response: 339874408
 Conc: 722.64 ng/ml



#37 AR-1262-2

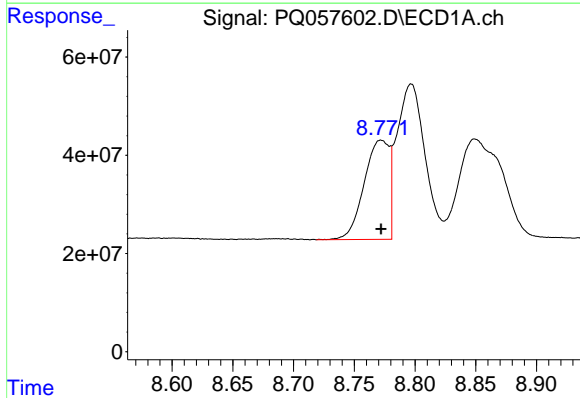
R.T.: 8.460 min
 Delta R.T.: -0.002 min
 Response: 1381680378
 Conc: 497.76 ng/ml

Instrument :
 ECD_Q
 ClientSampleId :



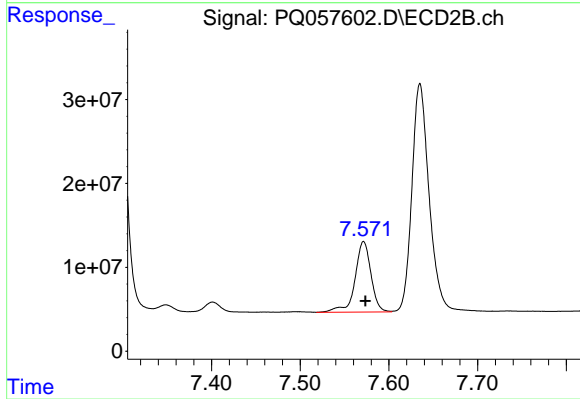
#37 AR-1262-2

R.T.: 7.294 min
 Delta R.T.: -0.002 min
 Response: 520550404
 Conc: 291.09 ng/ml



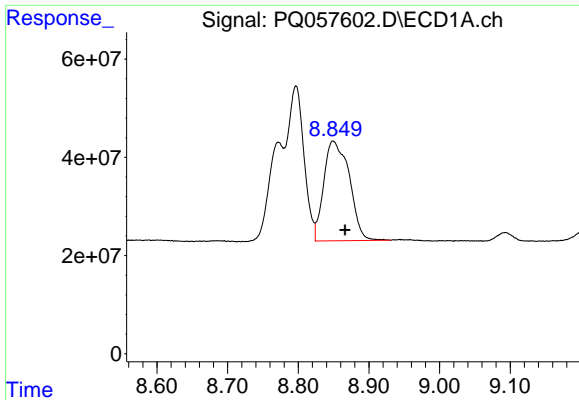
#38 AR-1262-3

R.T.: 8.772 min
 Delta R.T.: 0.000 min
 Response: 292793238
 Conc: 225.98 ng/ml



#38 AR-1262-3

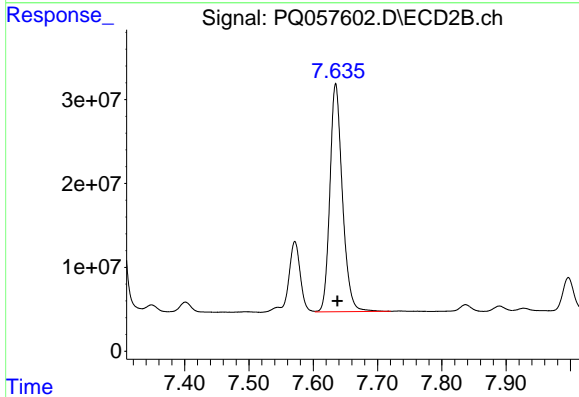
R.T.: 7.572 min
 Delta R.T.: -0.002 min
 Response: 105041209
 Conc: 145.63 ng/ml



#39 AR-1262-4

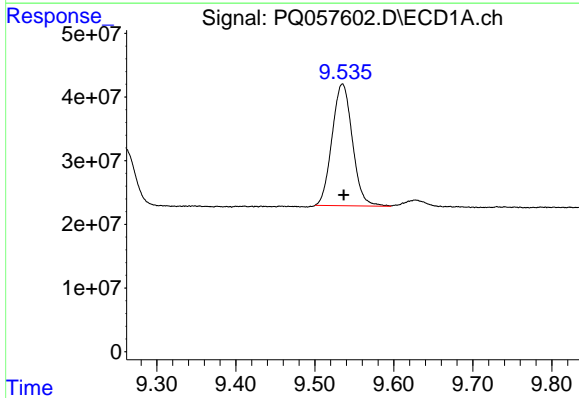
R.T.: 8.849 min
 Delta R.T.: -0.017 min
 Response: 510350457
 Conc: 493.38 ng/ml

Instrument :
 ECD_Q
 ClientSampleId :



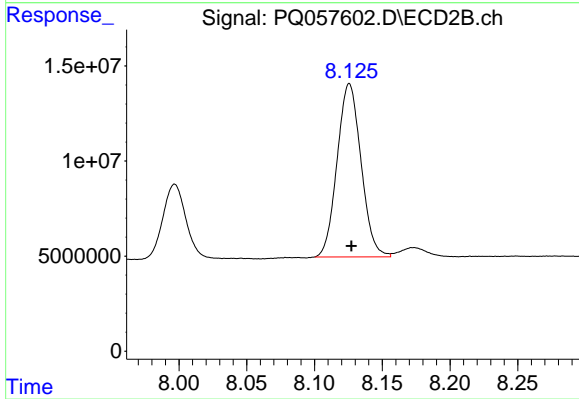
#39 AR-1262-4

R.T.: 7.635 min
 Delta R.T.: -0.003 min
 Response: 367184530
 Conc: 282.73 ng/ml



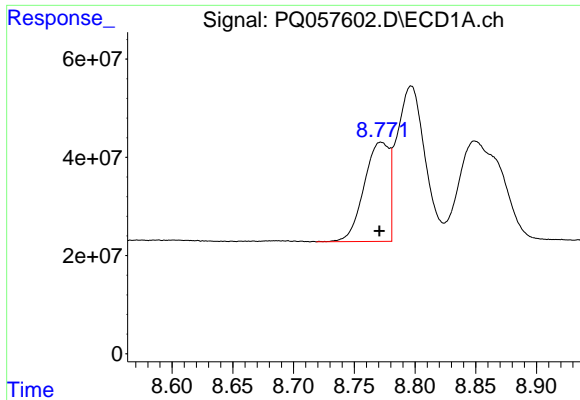
#40 AR-1262-5

R.T.: 9.535 min
 Delta R.T.: -0.002 min
 Response: 341826525
 Conc: 282.32 ng/ml



#40 AR-1262-5

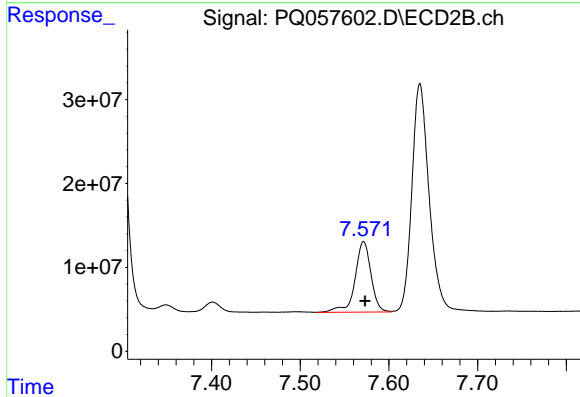
R.T.: 8.126 min
 Delta R.T.: -0.001 min
 Response: 111872166
 Conc: 197.46 ng/ml



#41 AR-1268-1

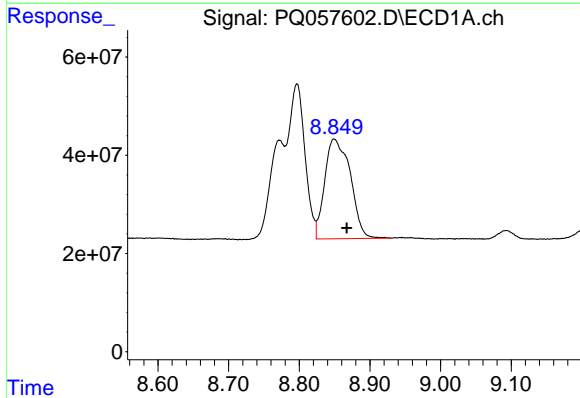
R.T.: 8.772 min
 Delta R.T.: 0.001 min
 Response: 292793238
 Conc: 86.60 ng/ml

Instrument :
 ECD_Q
 ClientSampleId :



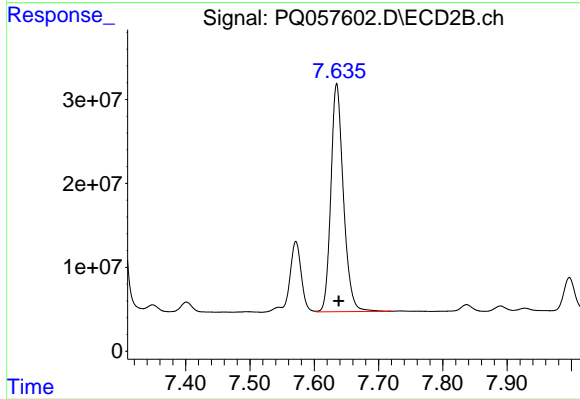
#41 AR-1268-1

R.T.: 7.572 min
 Delta R.T.: -0.001 min
 Response: 105041209
 Conc: 52.44 ng/ml



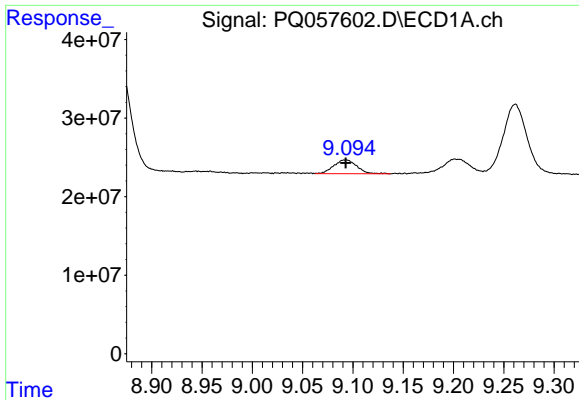
#42 AR-1268-2

R.T.: 8.849 min
 Delta R.T.: -0.018 min
 Response: 510350457
 Conc: 138.30 ng/ml



#42 AR-1268-2

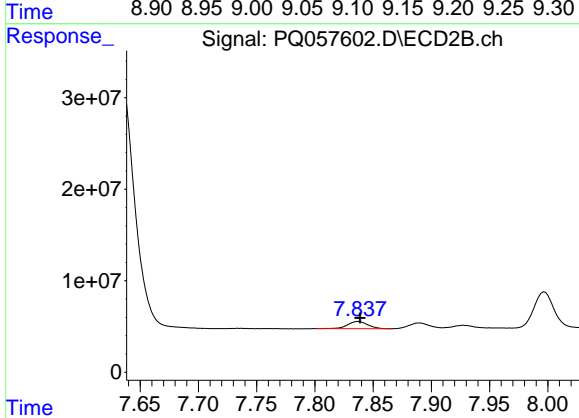
R.T.: 7.635 min
 Delta R.T.: -0.003 min
 Response: 367184530
 Conc: 200.53 ng/ml



#43 AR-1268-3

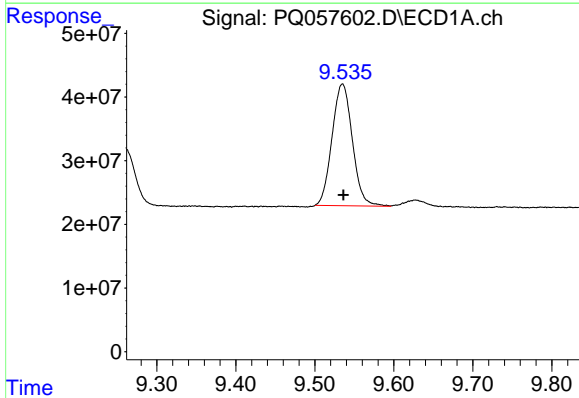
R.T.: 9.093 min
 Delta R.T.: 0.000 min
 Response: 27999581
 Conc: 8.83 ng/ml

Instrument :
 ECD_Q
 ClientSampleId :



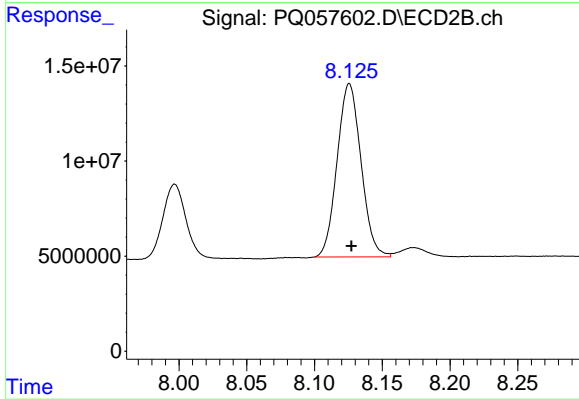
#43 AR-1268-3

R.T.: 7.837 min
 Delta R.T.: -0.002 min
 Response: 9487284
 Conc: 6.24 ng/ml



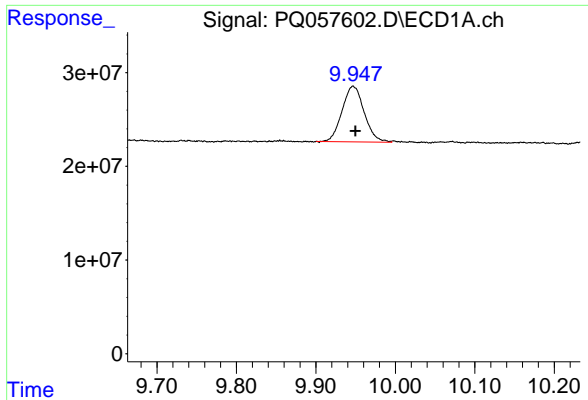
#44 AR-1268-4

R.T.: 9.535 min
 Delta R.T.: -0.001 min
 Response: 341826525
 Conc: 260.31 ng/ml



#44 AR-1268-4

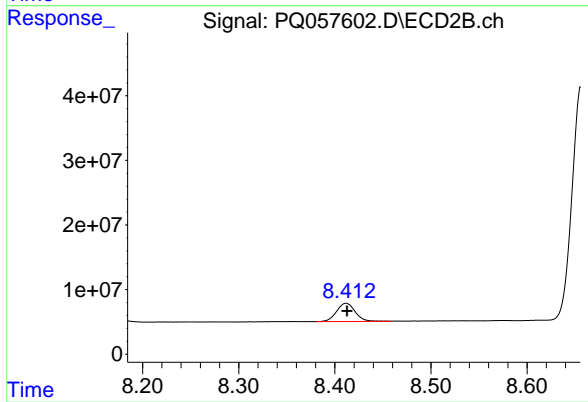
R.T.: 8.126 min
 Delta R.T.: -0.002 min
 Response: 111872166
 Conc: 179.58 ng/ml



#45 AR-1268-5

R.T.: 9.947 min
Delta R.T.: -0.003 min
Response: 114478957
Conc: 10.11 ng/ml

Instrument :
ECD_Q
ClientSampleId :



#45 AR-1268-5

R.T.: 8.412 min
Delta R.T.: 0.000 min
Response: 37768809
Conc: 7.83 ng/ml