

Data Path : Z:\pestpcbsrv\HPCHEM1\ECD_Q\Data\PQ051819\
 Data File : PQ039897.D
 Signal(s) : Signal #1: ECD1A.ch Signal #2: ECD2B.ch
 Acq On : 18 May 2019 03:46
 Operator : SM\AJ
 Sample : K2917-03 5X
 Misc :
 ALS Vial : 58 Sample Multiplier: 1

Instrument :
 ECD_Q
 ClientSampled :
 ETMD0

Integration File signal 1: autoint1.e
 Integration File signal 2: autoint2.e
 Quant Time: May 18 04:20:02 2019
 Quant Method : Z:\pestpcbsrv\HPCHEM1\ECD_Q\Method\PQ051819CLP.M
 Quant Title : GC EXTRACTABLES
 QLast Update : Sat May 18 00:58:45 2019
 Response via : Initial Calibration
 Integrator: ChemStation

Volume Inj. : 1 µl
 Signal #1 Phase : ZB MR1 Signal #2 Phase: ZB MR2
 Signal #1 Info : 30Mx0.32mmx 0.5µm Signal #2 Info : 30M x 0.32mm x 0.25µm

Compound	RT#1	RT#2	Resp#1	Resp#2	ng/ml	ng/ml

System Monitoring Compounds						
1) SA Tetrachlo...	5.617	4.736	18228853	13182514	2.704	2.745
2) SA Decachlor...	11.955	10.470	23272834	14259563	3.727	3.693
Target Compounds						
3) L1 AR-1016-1	7.067	6.187	3049138	1996652	9.444	7.861
4) L1 AR-1016-2	7.094	6.208	4554049	2445526	9.613	6.726 #
5) L1 AR-1016-3	7.165	6.423	1293157	2252009	4.563	12.281 #
6) L1 AR-1016-4	7.275	6.477	1768410	17006652	7.609	131.313 #
7) L1 AR-1016-5	7.610	6.729	14492834	12510313	64.817	66.519
12) L3 AR-1232-2	6.751	6.208	1521483	2445526	25.160	26.406
13) L3 AR-1232-3	7.094	6.423	4554049	2252009	36.543	45.582
14) L3 AR-1232-4	7.275	6.525	1768410	13194981	28.694	320.498 #
15) L3 AR-1232-5	7.381	6.729	21678049	12510313	544.326	278.260 #
16) L4 AR-1242-1	7.067	6.187	3049138	1996652	19.414	16.173
17) L4 AR-1242-2	7.094	6.208	4554049	2445526	19.701	13.899 #
18) L4 AR-1242-3	7.165	6.423	1293157	2252009	9.333	24.799 #
19) L4 AR-1242-4	7.275	6.525	1768410	13194981	15.528	155.912 #
20) L4 AR-1242-5	8.099	7.138	32269145	28848198	267.033	269.065
21) L5 AR-1248-1	7.067	6.187	3049138	1996652	23.479	19.759
22) L5 AR-1248-2	7.381	6.477	21678049	17006652	132.035	134.306
23) L5 AR-1248-3	7.610	6.525	14492834	13194981	74.669	99.484 #
24) L5 AR-1248-4	8.057	6.729	25446365	12510313	117.904	76.360 #
25) L5 AR-1248-5	8.099	7.185	32269145	24441020	154.804	150.834
26) L6 AR-1254-1	8.027	7.138	20994929	28848198	90.948	108.923
27) L6 AR-1254-2	8.267	7.305	45439387	17161951	126.087	75.178 #
28) L6 AR-1254-3	8.659	7.753	40590022	38945562	106.917	105.403
29) L6 AR-1254-4	8.961	8.002	20954273	18082282	76.773	78.784
30) L6 AR-1254-5	9.400	8.446	30477950	22157544	101.417	71.168 #
31) L7 AR-1260-1	8.830	7.892	13789352	18406939	30.904	49.967 #
32) L7 AR-1260-2	9.100	8.097	21792867	15070599	40.549	33.128
33) L7 AR-1260-3	9.473	8.260	10363742	10247134	25.832	24.395
34) L7 AR-1260-4	9.712	8.756	10820030	7596983	23.525	22.953
35) L7 AR-1260-5	10.055	9.010	19297945	18213593	20.018	22.204
36) L8 AR-1262-1	9.533	8.540	4193344	5354637	27.330	40.061 #
37) L8 AR-1262-2	10.055	9.010	19297945	18213593	28.542	30.404
38) L8 AR-1262-3	10.405	9.301	11685975	2412132	25.444	10.464 #
39) L8 AR-1262-4	10.461	9.368	6451068	11904969	17.529	28.001 #
40) L8 AR-1262-5	11.174	9.889	4145179	3377547	17.243	18.857
41) L9 AR-1268-1	10.405	9.301	11685975	2412132	9.650	2.331 #
42) L9 AR-1268-2	10.461	9.368	6451068	11904969	5.605	12.441 #
44) L9 AR-1268-4	11.174	9.889	4145179	3377547	10.968	11.260
45) L9 AR-1268-5	11.606	10.204	1403302	837378	0.423	0.341

Data Path : Z:\pestpcbsrv\HPCHEM1\ECD_Q\Data\PQ051819\
Data File : PQ039897.D
Signal(s) : Signal #1: ECD1A.ch Signal #2: ECD2B.ch
Acq On : 18 May 2019 03:46
Operator : SM\AJ
Sample : K2917-03 5X
Misc :
ALS Vial : 58 Sample Multiplier: 1

Instrument :
ECD_Q
ClientSampleId :
ETMD0

Integration File signal 1: autoint1.e
Integration File signal 2: autoint2.e
Quant Time: May 18 04:20:02 2019
Quant Method : Z:\pestpcbsrv\HPCHEM1\ECD_Q\Method\PQ051819CLP.M
Quant Title : GC EXTRACTABLES
QLast Update : Sat May 18 00:58:45 2019
Response via : Initial Calibration
Integrator: ChemStation

Volume Inj. : 1 µl
Signal #1 Phase : ZB MR1 Signal #2 Phase: ZB MR2
Signal #1 Info : 30Mx0.32mmx 0.5µm Signal #2 Info : 30M x 0.32mm x 0.25µm

Compound	RT#1	RT#2	Resp#1	Resp#2	ng/ml	ng/ml
----------	------	------	--------	--------	-------	-------

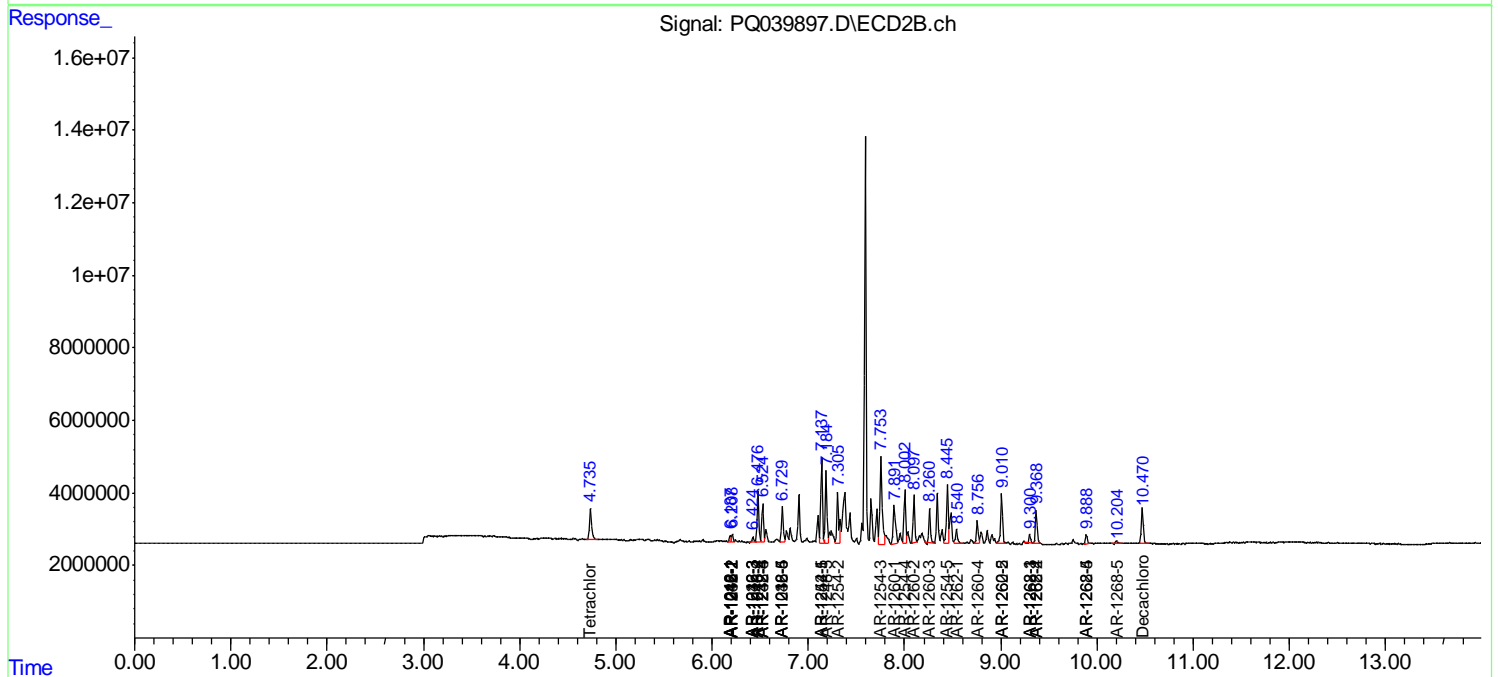
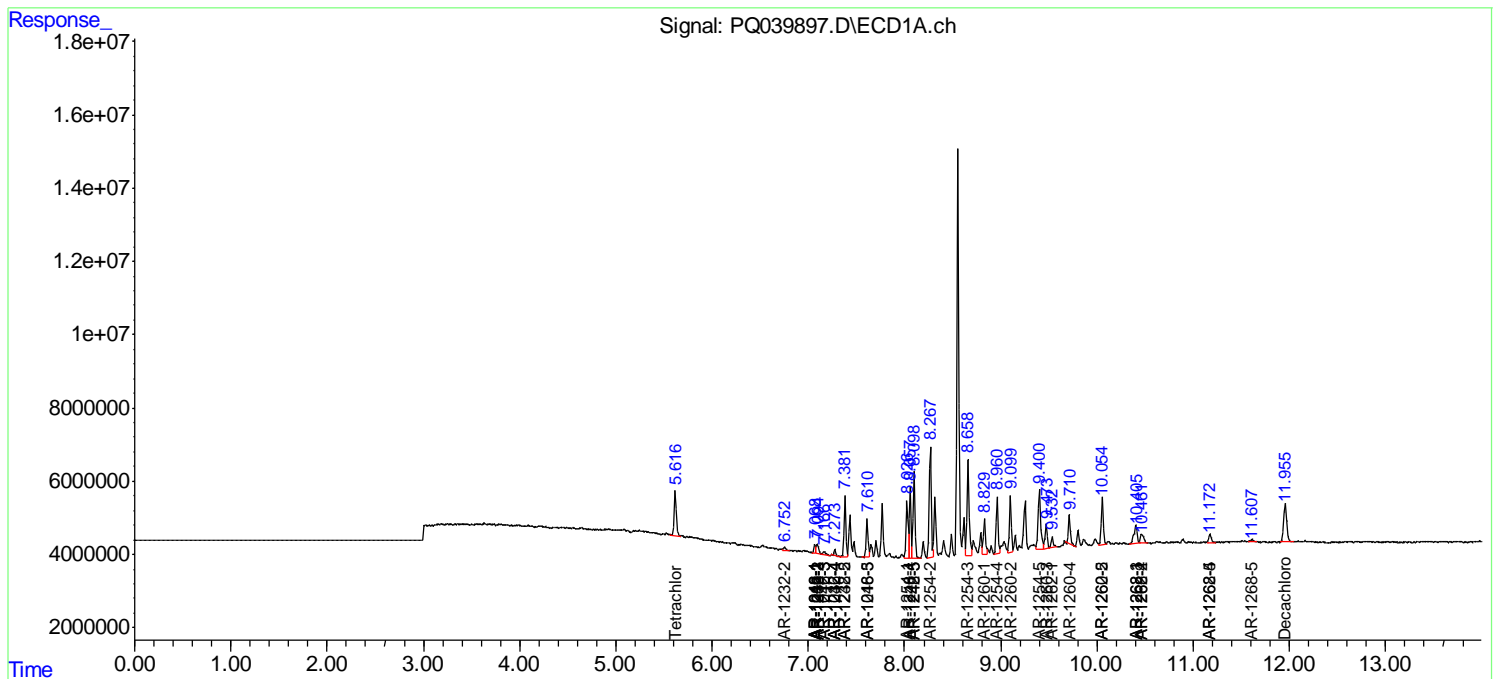
(f)=RT Delta > 1/2 Window (#)=Amounts differ by > 25% (m)=manual int.

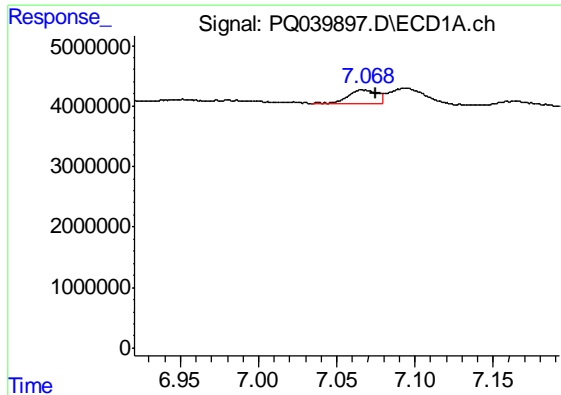
Data Path : Z:\pestpcbsrv\HPCHEM1\ECD_Q\Data\PQ051819\
 Data File : PQ039897.D
 Signal(s) : Signal #1: ECD1A.ch Signal #2: ECD2B.ch
 Acq On : 18 May 2019 03:46
 Operator : SM\AJ
 Sample : K2917-03 5X
 Misc :
 ALS Vial : 58 Sample Multiplier: 1

Instrument :
 ECD_Q
 ClientSampled :
 ETMD0

Integration File signal 1: autoint1.e
 Integration File signal 2: autoint2.e
 Quant Time: May 18 04:20:02 2019
 Quant Method : Z:\pestpcbsrv\HPCHEM1\ECD_Q\Method\PQ051819CLP.M
 Quant Title : GC EXTRACTABLES
 QLast Update : Sat May 18 00:58:45 2019
 Response via : Initial Calibration
 Integrator: ChemStation

Volume Inj. : 1 µl
 Signal #1 Phase : ZB MR1 Signal #2 Phase: ZB MR2
 Signal #1 Info : 30Mx0.32mmx 0.5µm Signal #2 Info : 30M x 0.32mm x 0.25µm

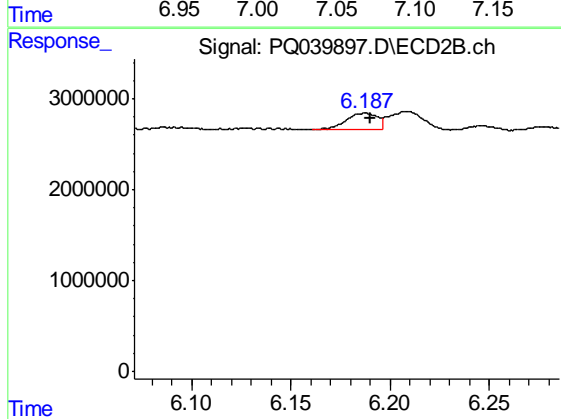




#3 AR-1016-1

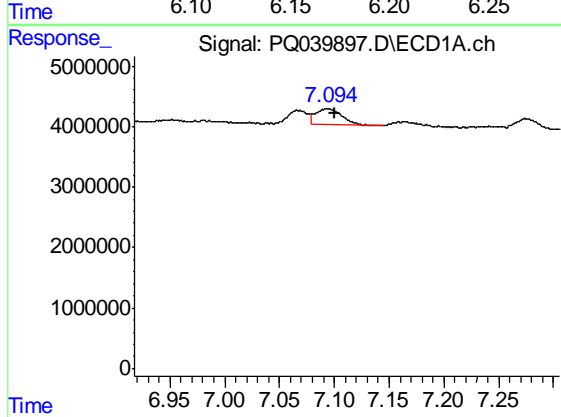
R.T.: 7.067 min
 Delta R.T.: -0.008 min
 Response: 3049138
 Conc: 9.44 ng/ml

Instrument :
 ECD_Q
 ClientSampleId :
 ETMD0



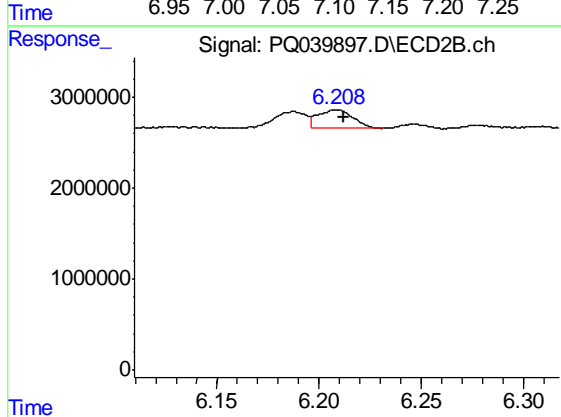
#3 AR-1016-1

R.T.: 6.187 min
 Delta R.T.: -0.003 min
 Response: 1996652
 Conc: 7.86 ng/ml



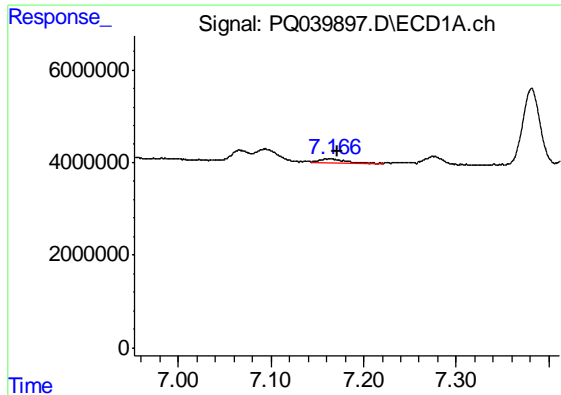
#4 AR-1016-2

R.T.: 7.094 min
 Delta R.T.: -0.006 min
 Response: 4554049
 Conc: 9.61 ng/ml



#4 AR-1016-2

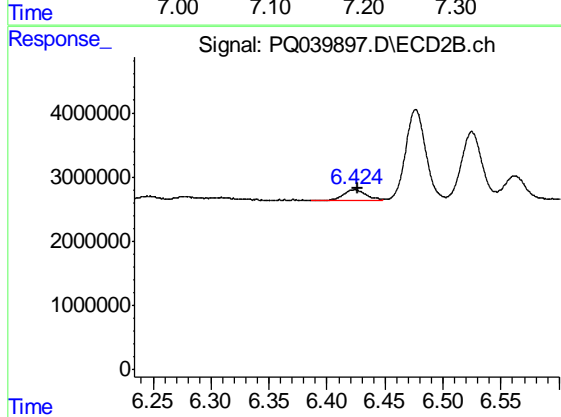
R.T.: 6.208 min
 Delta R.T.: -0.004 min
 Response: 2445526
 Conc: 6.73 ng/ml



#5 AR-1016-3

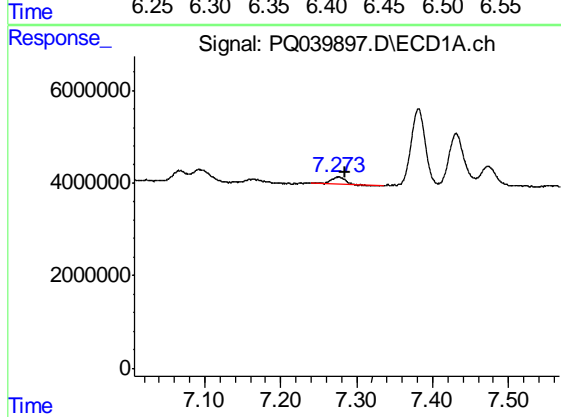
R.T.: 7.165 min
 Delta R.T.: -0.006 min
 Response: 1293157
 Conc: 4.56 ng/ml

Instrument :
 ECD_Q
 ClientSampled :
 ETMD0



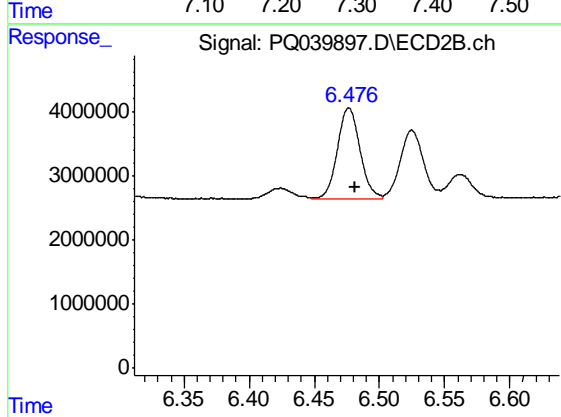
#5 AR-1016-3

R.T.: 6.423 min
 Delta R.T.: -0.003 min
 Response: 2252009
 Conc: 12.28 ng/ml



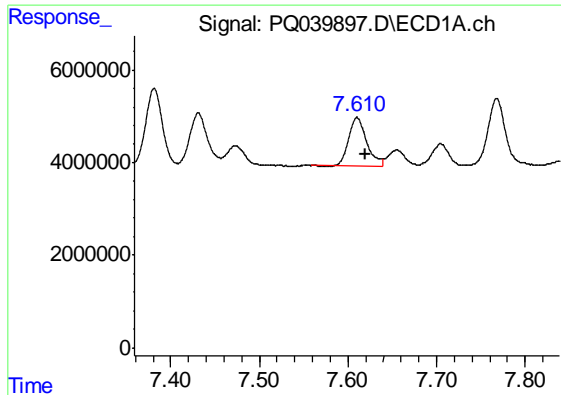
#6 AR-1016-4

R.T.: 7.275 min
 Delta R.T.: -0.010 min
 Response: 1768410
 Conc: 7.61 ng/ml



#6 AR-1016-4

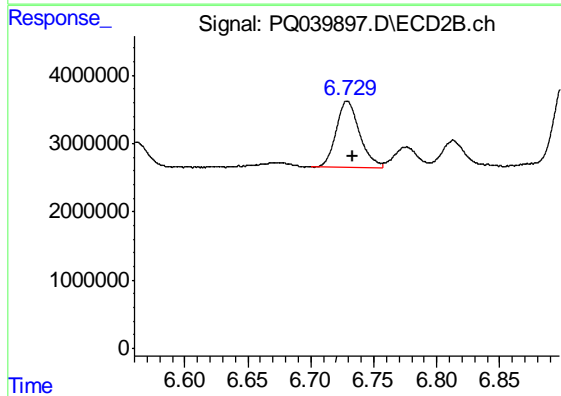
R.T.: 6.477 min
 Delta R.T.: -0.005 min
 Response: 17006652
 Conc: 131.31 ng/ml



#7 AR-1016-5

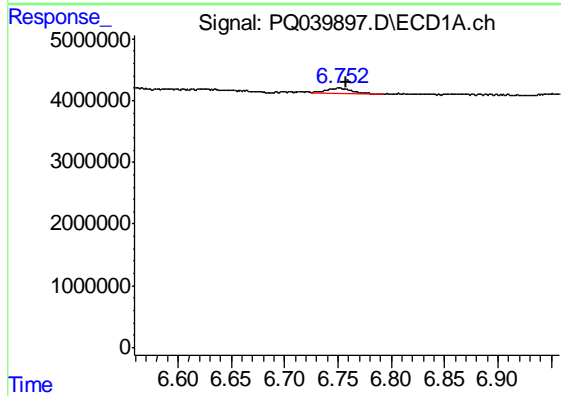
R.T.: 7.610 min
 Delta R.T.: -0.009 min
 Response: 14492834
 Conc: 64.82 ng/ml

Instrument :
 ECD_Q
 ClientSampled :
 ETMD0



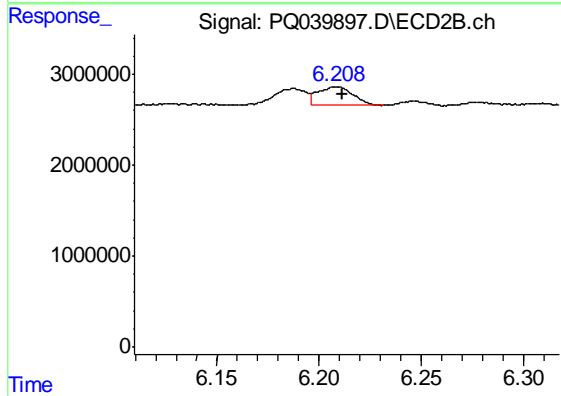
#7 AR-1016-5

R.T.: 6.729 min
 Delta R.T.: -0.004 min
 Response: 12510313
 Conc: 66.52 ng/ml



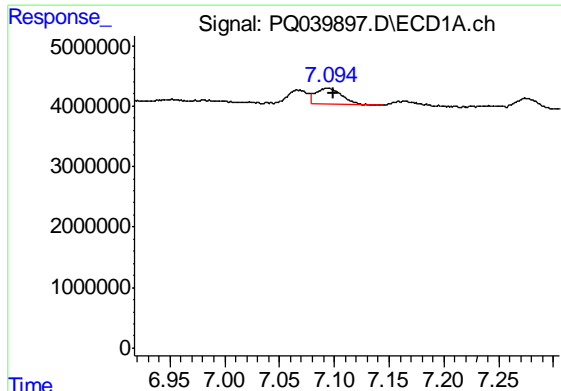
#12 AR-1232-2

R.T.: 6.751 min
 Delta R.T.: -0.007 min
 Response: 1521483
 Conc: 25.16 ng/ml



#12 AR-1232-2

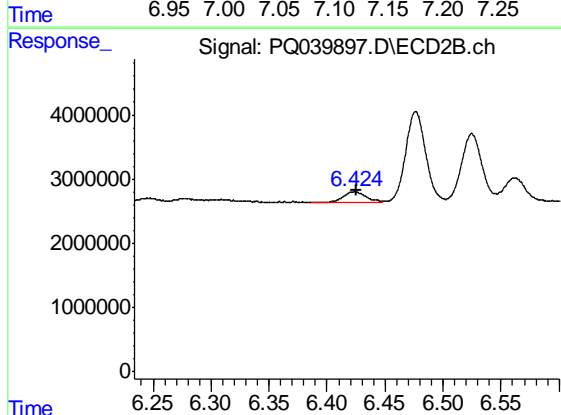
R.T.: 6.208 min
 Delta R.T.: -0.003 min
 Response: 2445526
 Conc: 26.41 ng/ml



#13 AR-1232-3

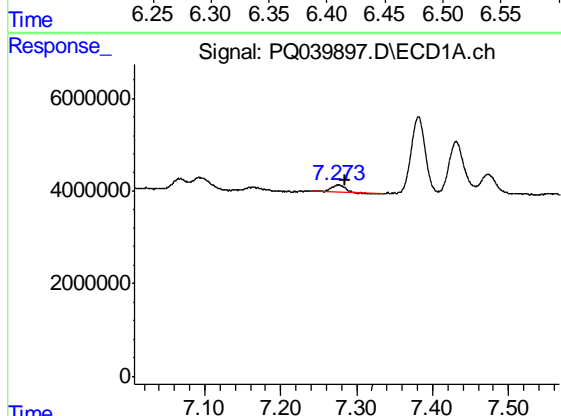
R.T.: 7.094 min
 Delta R.T.: -0.005 min
 Response: 4554049
 Conc: 36.54 ng/ml

Instrument :
 ECD_Q
 ClientSampled :
 ETMD0



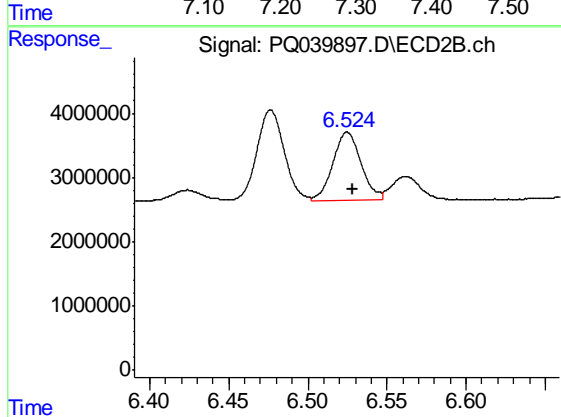
#13 AR-1232-3

R.T.: 6.423 min
 Delta R.T.: -0.002 min
 Response: 2252009
 Conc: 45.58 ng/ml



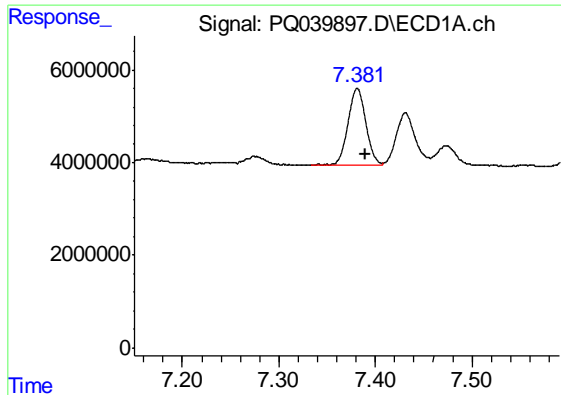
#14 AR-1232-4

R.T.: 7.275 min
 Delta R.T.: -0.011 min
 Response: 1768410
 Conc: 28.69 ng/ml



#14 AR-1232-4

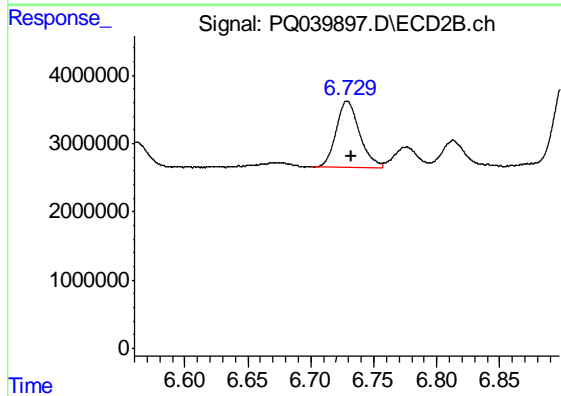
R.T.: 6.525 min
 Delta R.T.: -0.003 min
 Response: 13194981
 Conc: 320.50 ng/ml



#15 AR-1232-5

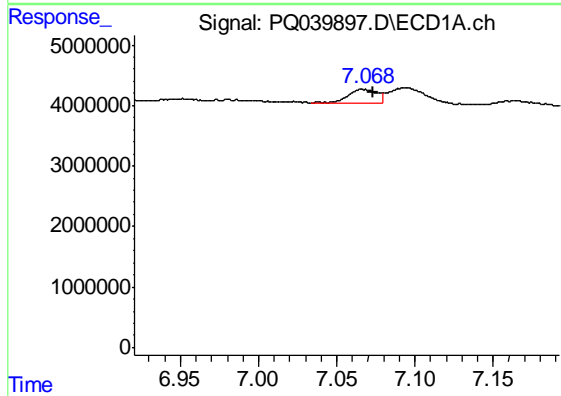
R.T.: 7.381 min
 Delta R.T.: -0.008 min
 Response: 21678049
 Conc: 544.33 ng/ml

Instrument :
 ECD_Q
 ClientSampleId :
 ETMD0



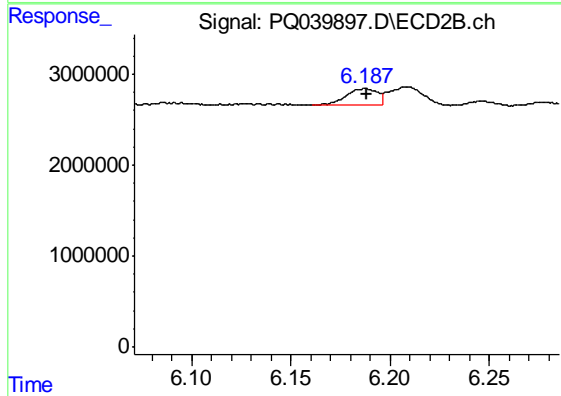
#15 AR-1232-5

R.T.: 6.729 min
 Delta R.T.: -0.004 min
 Response: 12510313
 Conc: 278.26 ng/ml



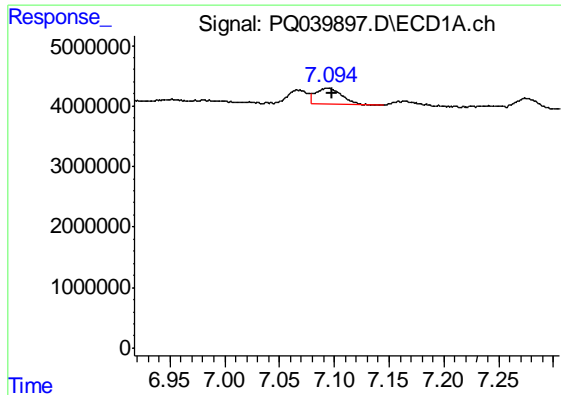
#16 AR-1242-1

R.T.: 7.067 min
 Delta R.T.: -0.006 min
 Response: 3049138
 Conc: 19.41 ng/ml



#16 AR-1242-1

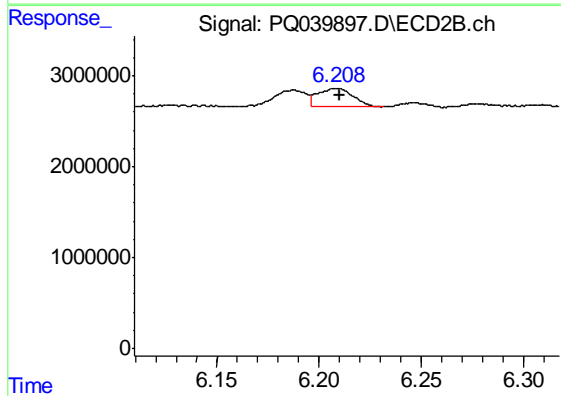
R.T.: 6.187 min
 Delta R.T.: -0.001 min
 Response: 1996652
 Conc: 16.17 ng/ml



#17 AR-1242-2

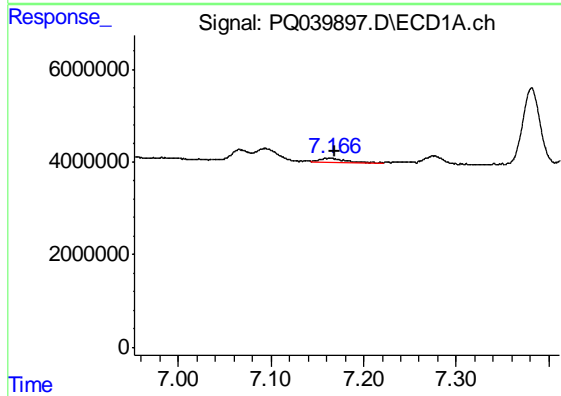
R.T.: 7.094 min
 Delta R.T.: -0.004 min
 Response: 4554049
 Conc: 19.70 ng/ml

Instrument :
 ECD_Q
 ClientSampleId :
 ETMD0



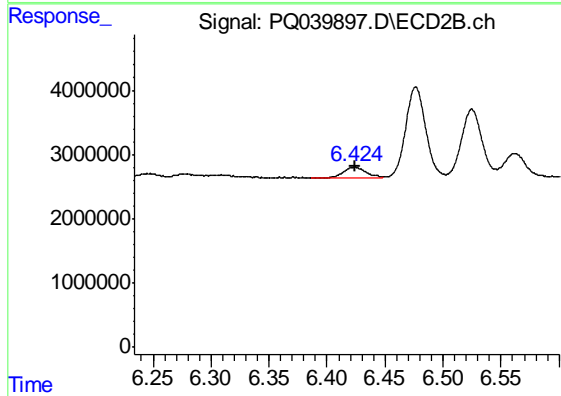
#17 AR-1242-2

R.T.: 6.208 min
 Delta R.T.: -0.002 min
 Response: 2445526
 Conc: 13.90 ng/ml



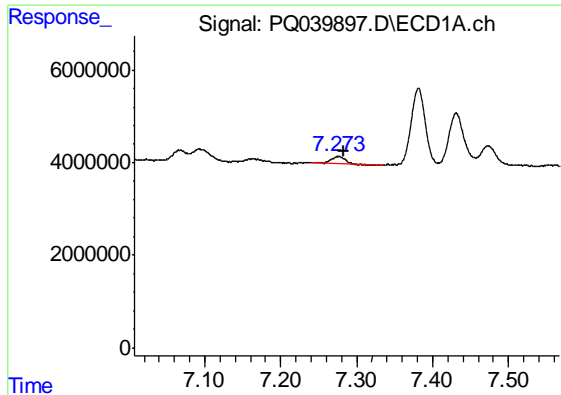
#18 AR-1242-3

R.T.: 7.165 min
 Delta R.T.: -0.004 min
 Response: 1293157
 Conc: 9.33 ng/ml



#18 AR-1242-3

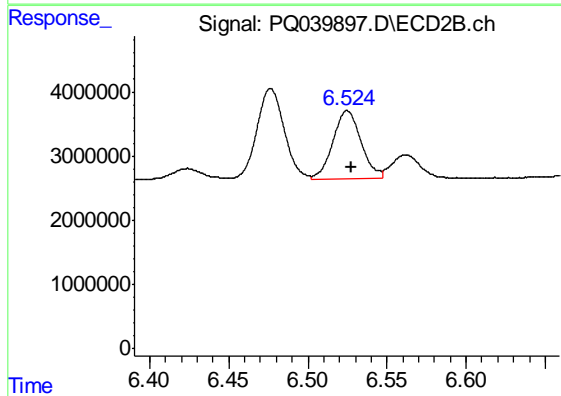
R.T.: 6.423 min
 Delta R.T.: -0.001 min
 Response: 2252009
 Conc: 24.80 ng/ml



#19 AR-1242-4

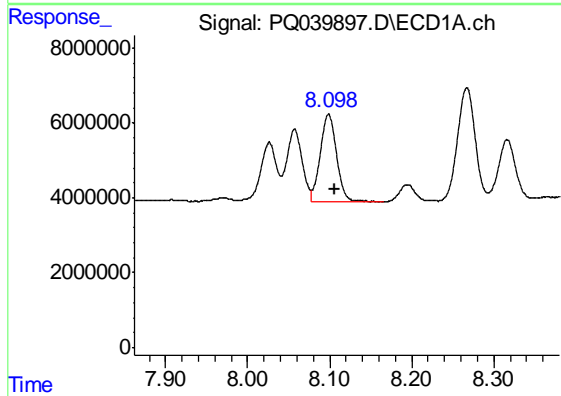
R.T.: 7.275 min
 Delta R.T.: -0.008 min
 Response: 1768410
 Conc: 15.53 ng/ml

Instrument :
 ECD_Q
 ClientSampleId :
 ETMD0



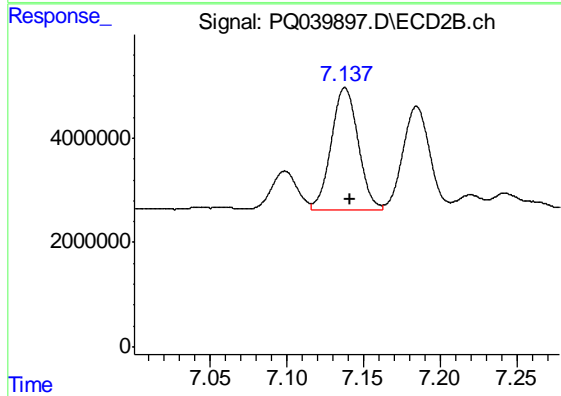
#19 AR-1242-4

R.T.: 6.525 min
 Delta R.T.: -0.003 min
 Response: 13194981
 Conc: 155.91 ng/ml



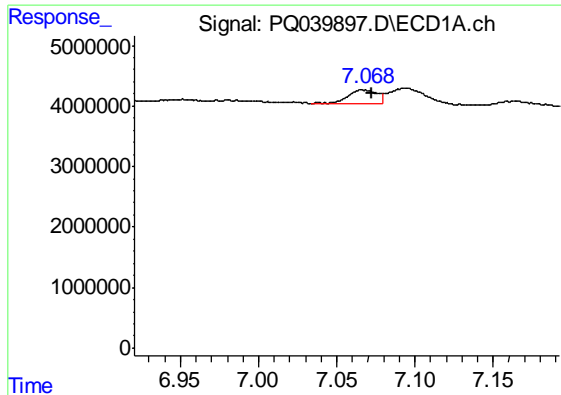
#20 AR-1242-5

R.T.: 8.099 min
 Delta R.T.: -0.007 min
 Response: 32269145
 Conc: 267.03 ng/ml



#20 AR-1242-5

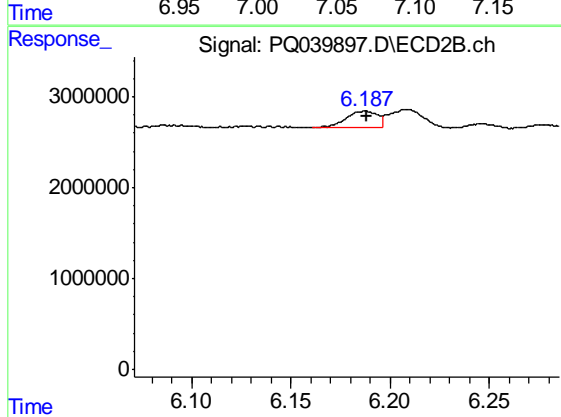
R.T.: 7.138 min
 Delta R.T.: -0.004 min
 Response: 28848198
 Conc: 269.07 ng/ml



#21 AR-1248-1

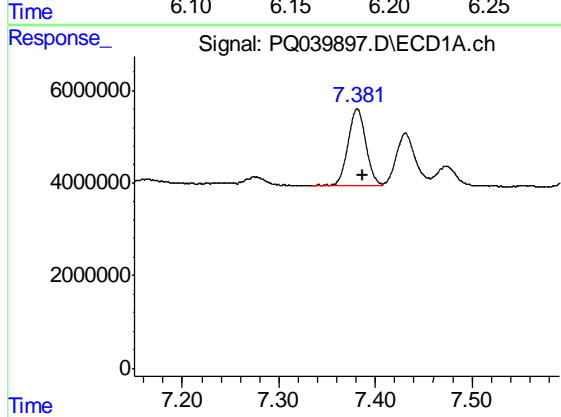
R.T.: 7.067 min
 Delta R.T.: -0.006 min
 Response: 3049138
 Conc: 23.48 ng/ml

Instrument :
 ECD_Q
 ClientSampleId :
 ETMD0



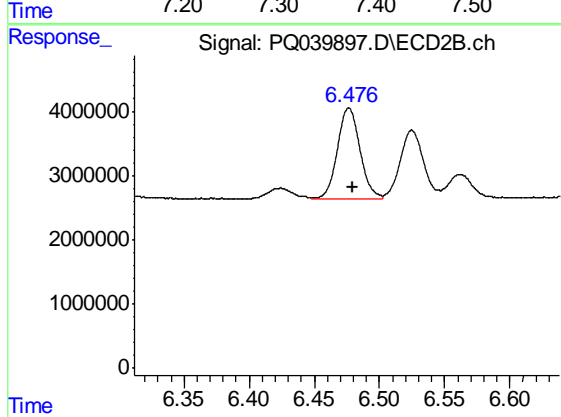
#21 AR-1248-1

R.T.: 6.187 min
 Delta R.T.: -0.001 min
 Response: 1996652
 Conc: 19.76 ng/ml



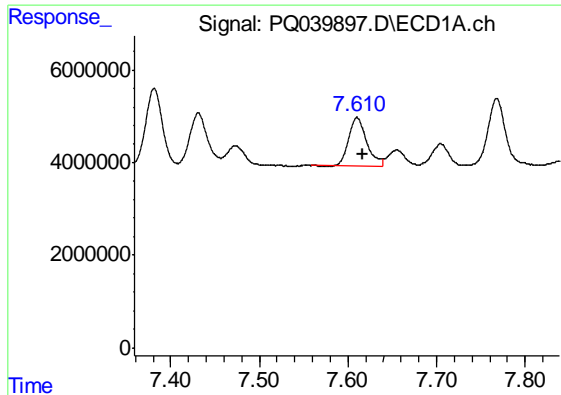
#22 AR-1248-2

R.T.: 7.381 min
 Delta R.T.: -0.005 min
 Response: 21678049
 Conc: 132.03 ng/ml



#22 AR-1248-2

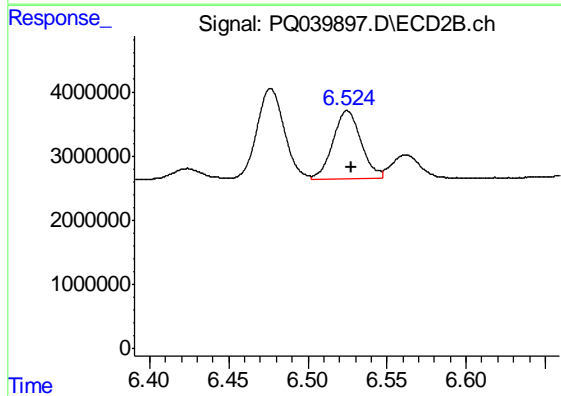
R.T.: 6.477 min
 Delta R.T.: -0.003 min
 Response: 17006652
 Conc: 134.31 ng/ml



#23 AR-1248-3

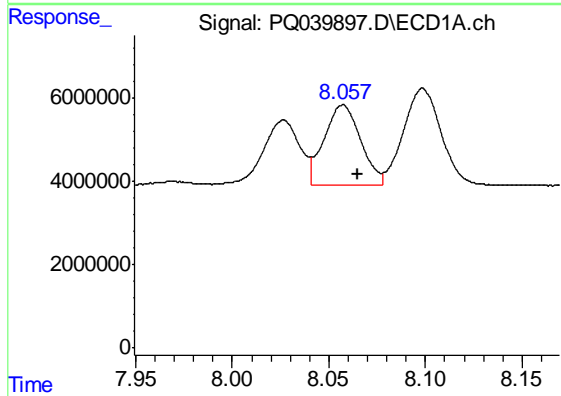
R.T.: 7.610 min
 Delta R.T.: -0.007 min
 Response: 14492834
 Conc: 74.67 ng/ml

Instrument :
 ECD_Q
 ClientSampled :
 ETMD0



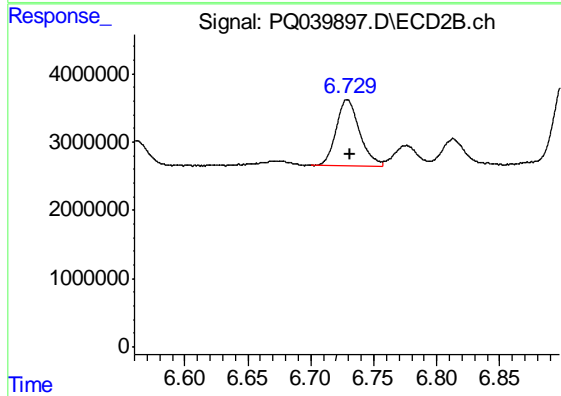
#23 AR-1248-3

R.T.: 6.525 min
 Delta R.T.: -0.002 min
 Response: 13194981
 Conc: 99.48 ng/ml



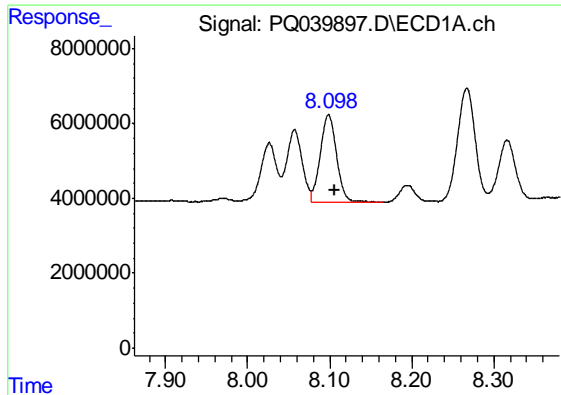
#24 AR-1248-4

R.T.: 8.057 min
 Delta R.T.: -0.008 min
 Response: 25446365
 Conc: 117.90 ng/ml



#24 AR-1248-4

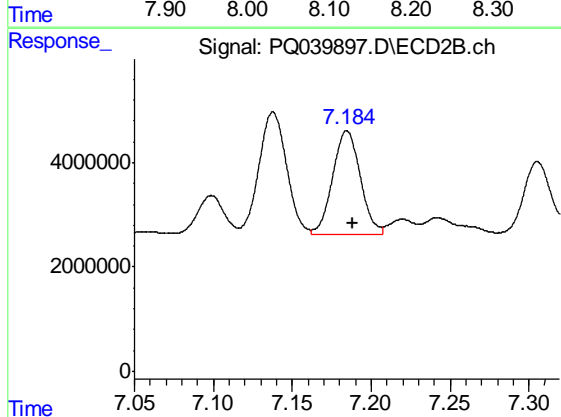
R.T.: 6.729 min
 Delta R.T.: -0.003 min
 Response: 12510313
 Conc: 76.36 ng/ml



#25 AR-1248-5

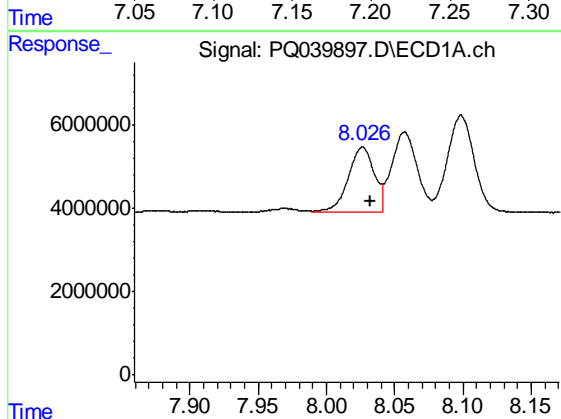
R.T.: 8.099 min
 Delta R.T.: -0.008 min
 Response: 32269145
 Conc: 154.80 ng/ml

Instrument :
 ECD_Q
 ClientSampleId :
 ETMD0



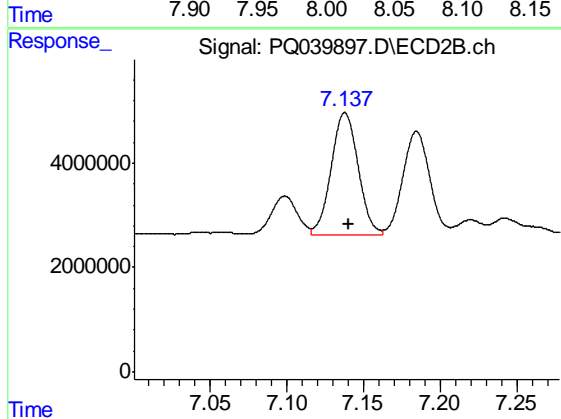
#25 AR-1248-5

R.T.: 7.185 min
 Delta R.T.: -0.003 min
 Response: 24441020
 Conc: 150.83 ng/ml



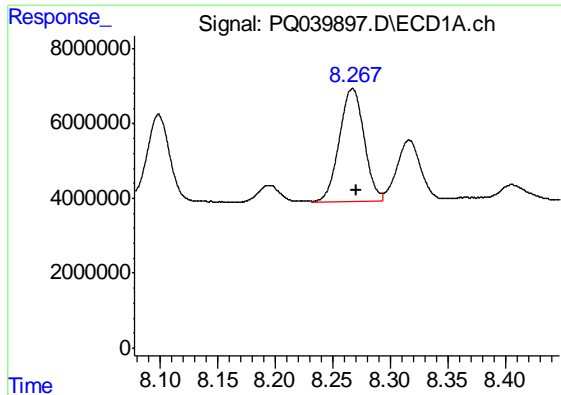
#26 AR-1254-1

R.T.: 8.027 min
 Delta R.T.: -0.006 min
 Response: 20994929
 Conc: 90.95 ng/ml



#26 AR-1254-1

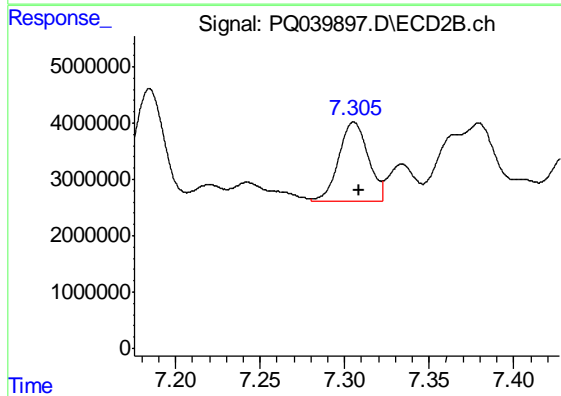
R.T.: 7.138 min
 Delta R.T.: -0.002 min
 Response: 28848198
 Conc: 108.92 ng/ml



#27 AR-1254-2

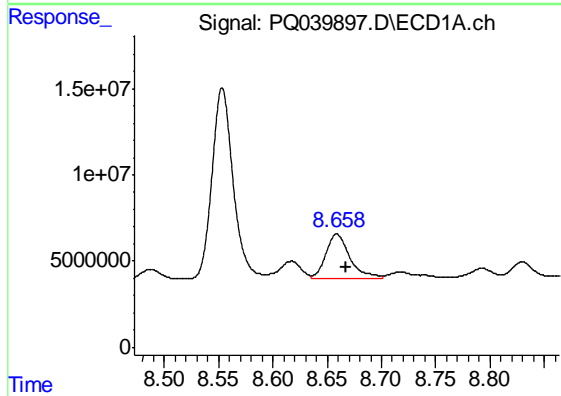
R.T.: 8.267 min
 Delta R.T.: -0.004 min
 Response: 45439387
 Conc: 126.09 ng/ml

Instrument :
 ECD_Q
 ClientSampleId :
 ETMD0



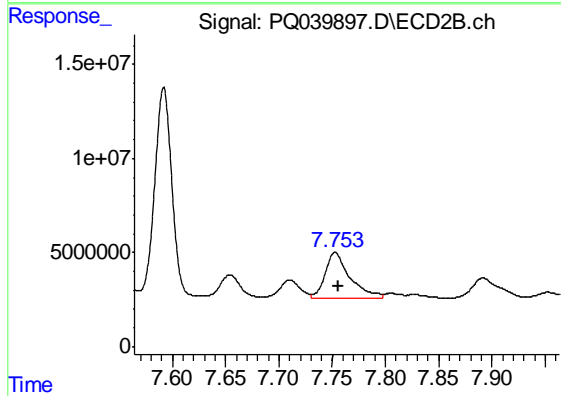
#27 AR-1254-2

R.T.: 7.305 min
 Delta R.T.: -0.003 min
 Response: 17161951
 Conc: 75.18 ng/ml



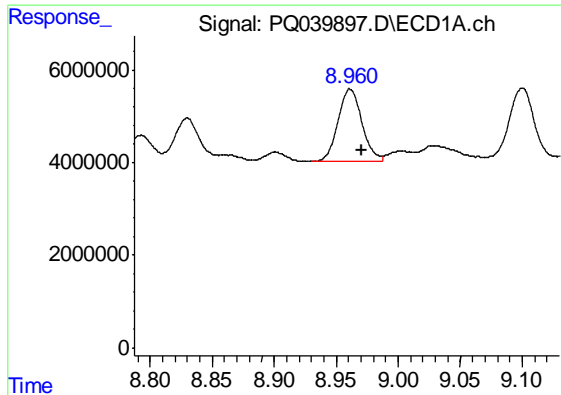
#28 AR-1254-3

R.T.: 8.659 min
 Delta R.T.: -0.008 min
 Response: 40590022
 Conc: 106.92 ng/ml



#28 AR-1254-3

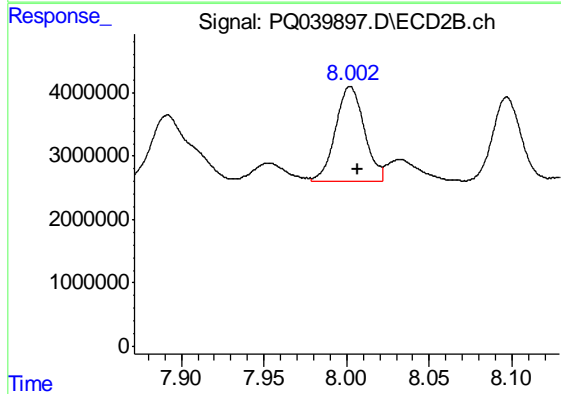
R.T.: 7.753 min
 Delta R.T.: -0.004 min
 Response: 38945562
 Conc: 105.40 ng/ml



#29 AR-1254-4

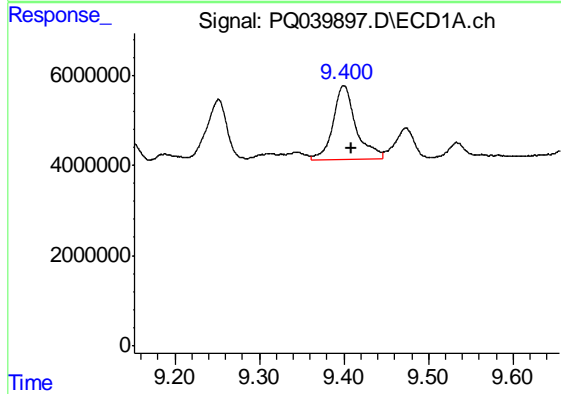
R.T.: 8.961 min
 Delta R.T.: -0.009 min
 Response: 20954273
 Conc: 76.77 ng/ml

Instrument :
 ECD_Q
 ClientSampled :
 ETMD0



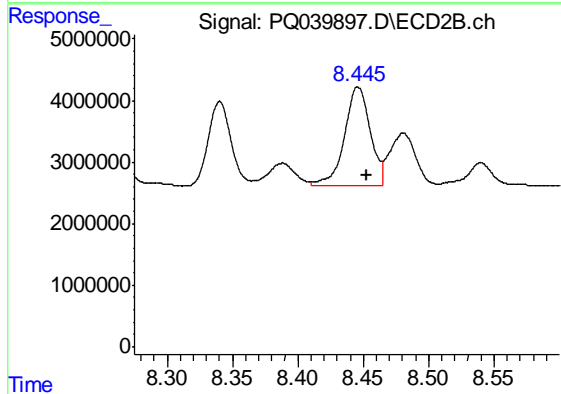
#29 AR-1254-4

R.T.: 8.002 min
 Delta R.T.: -0.005 min
 Response: 18082282
 Conc: 78.78 ng/ml



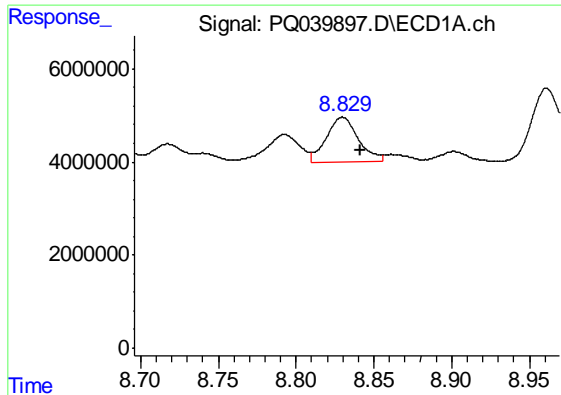
#30 AR-1254-5

R.T.: 9.400 min
 Delta R.T.: -0.009 min
 Response: 30477950
 Conc: 101.42 ng/ml



#30 AR-1254-5

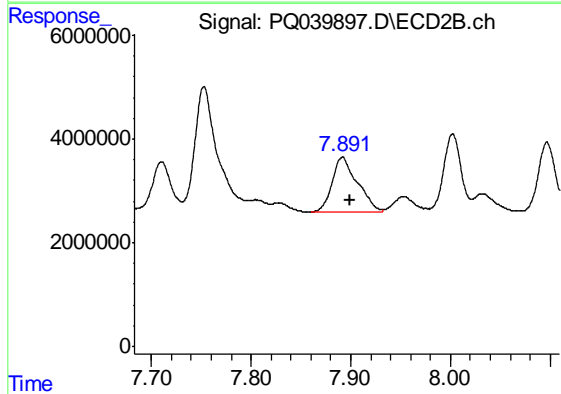
R.T.: 8.446 min
 Delta R.T.: -0.007 min
 Response: 22157544
 Conc: 71.17 ng/ml



#31 AR-1260-1

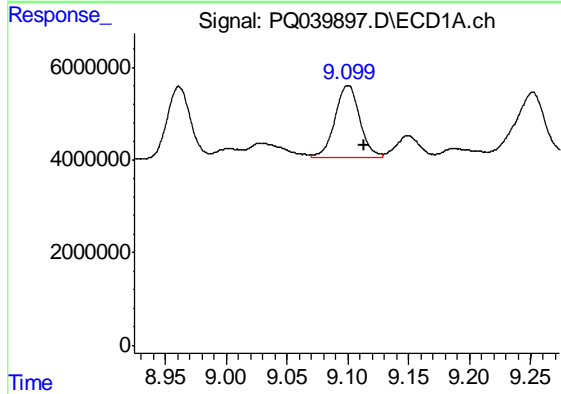
R.T.: 8.830 min
 Delta R.T.: -0.011 min
 Response: 13789352
 Conc: 30.90 ng/ml

Instrument :
 ECD_Q
 ClientSampleId :
 ETMD0



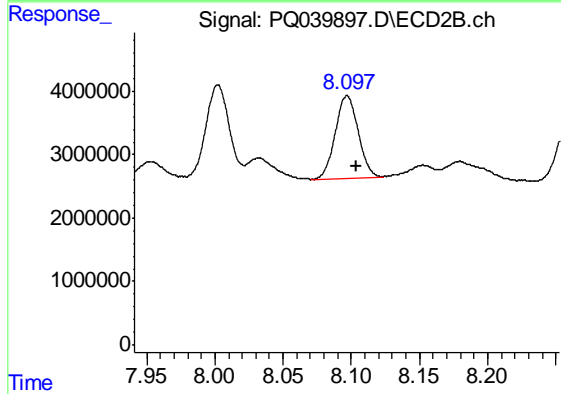
#31 AR-1260-1

R.T.: 7.892 min
 Delta R.T.: -0.007 min
 Response: 18406939
 Conc: 49.97 ng/ml



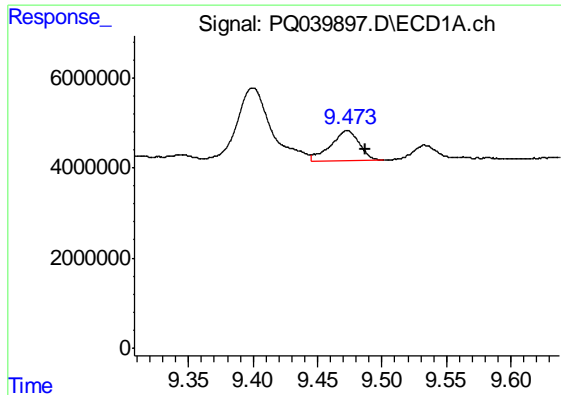
#32 AR-1260-2

R.T.: 9.100 min
 Delta R.T.: -0.013 min
 Response: 21792867
 Conc: 40.55 ng/ml



#32 AR-1260-2

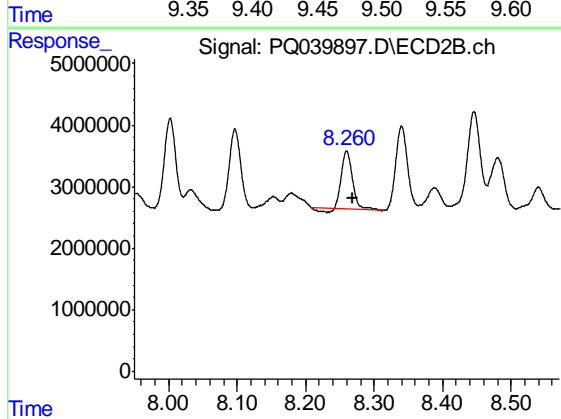
R.T.: 8.097 min
 Delta R.T.: -0.006 min
 Response: 15070599
 Conc: 33.13 ng/ml



#33 AR-1260-3

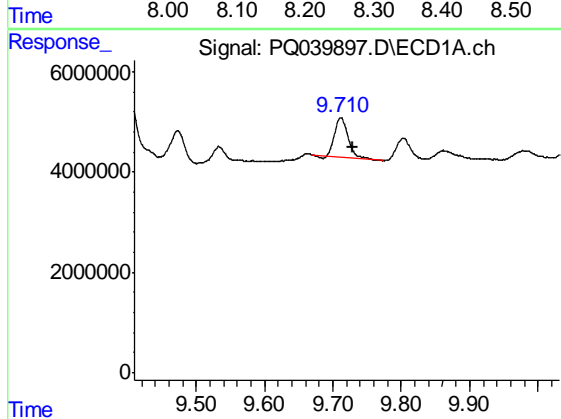
R.T.: 9.473 min
 Delta R.T.: -0.014 min
 Response: 10363742
 Conc: 25.83 ng/ml

Instrument :
 ECD_Q
 ClientSampleId :
 ETMD0



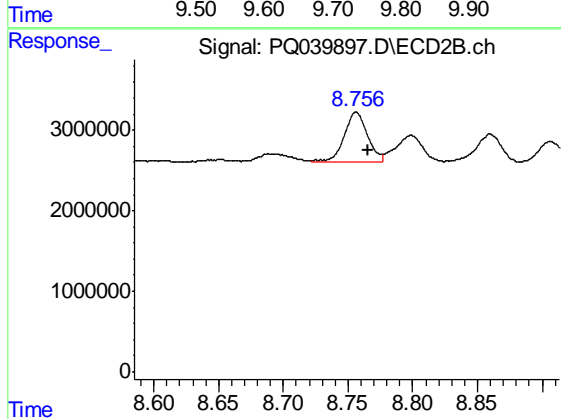
#33 AR-1260-3

R.T.: 8.260 min
 Delta R.T.: -0.008 min
 Response: 10247134
 Conc: 24.39 ng/ml



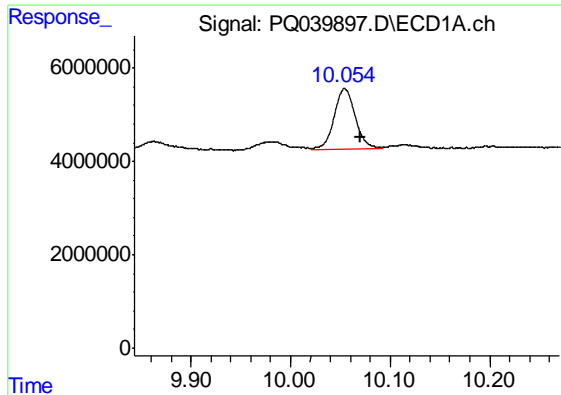
#34 AR-1260-4

R.T.: 9.712 min
 Delta R.T.: -0.017 min
 Response: 10820030
 Conc: 23.53 ng/ml



#34 AR-1260-4

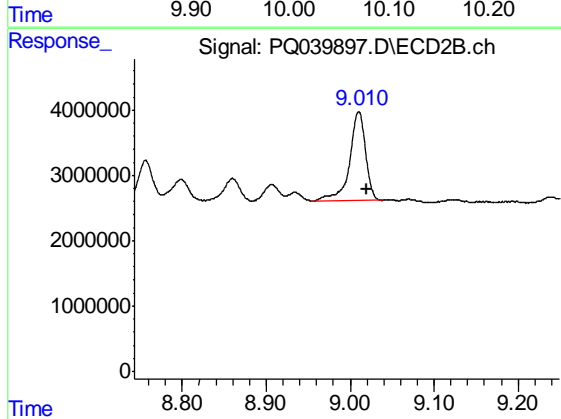
R.T.: 8.756 min
 Delta R.T.: -0.009 min
 Response: 7596983
 Conc: 22.95 ng/ml



#35 AR-1260-5

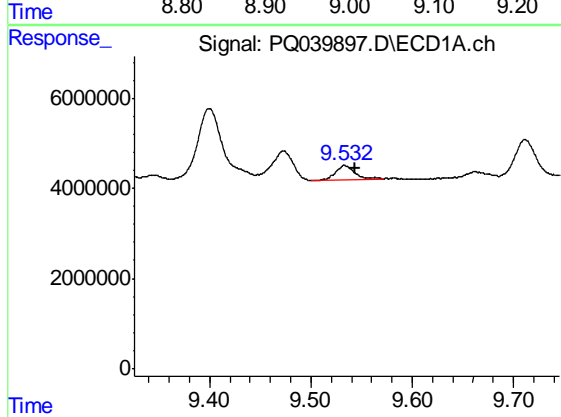
R.T.: 10.055 min
Delta R.T.: -0.016 min
Response: 19297945
Conc: 20.02 ng/ml

Instrument :
ECD_Q
ClientSampled :
ETMD0



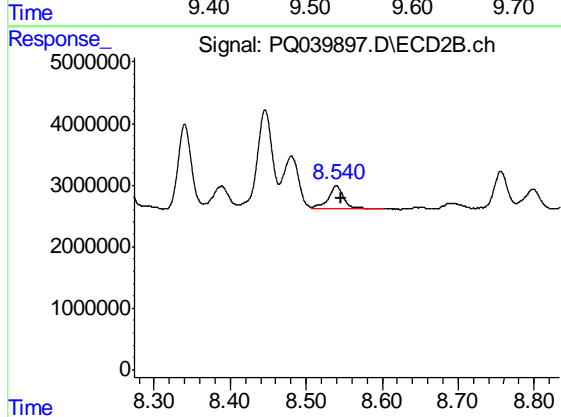
#35 AR-1260-5

R.T.: 9.010 min
Delta R.T.: -0.009 min
Response: 18213593
Conc: 22.20 ng/ml



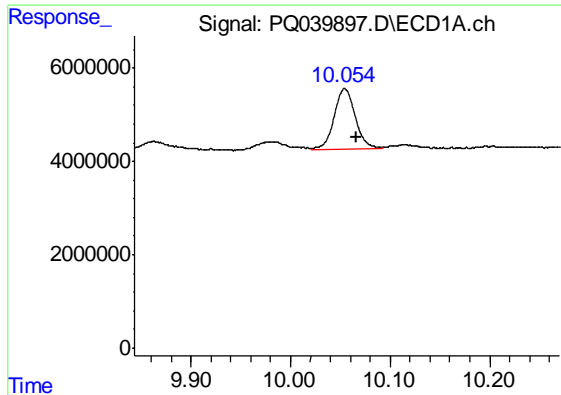
#36 AR-1262-1

R.T.: 9.533 min
Delta R.T.: -0.011 min
Response: 4193344
Conc: 27.33 ng/ml



#36 AR-1262-1

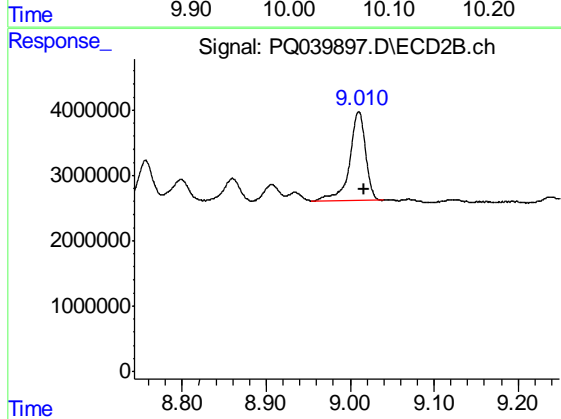
R.T.: 8.540 min
Delta R.T.: -0.006 min
Response: 5354637
Conc: 40.06 ng/ml



#37 AR-1262-2

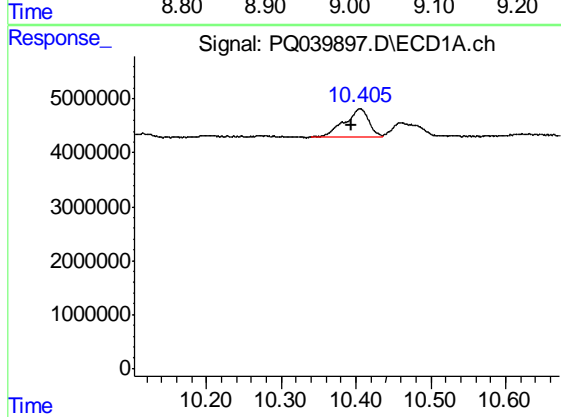
R.T.: 10.055 min
 Delta R.T.: -0.012 min
 Response: 19297945
 Conc: 28.54 ng/ml

Instrument :
 ECD_Q
 ClientSampled :
 ETMD0



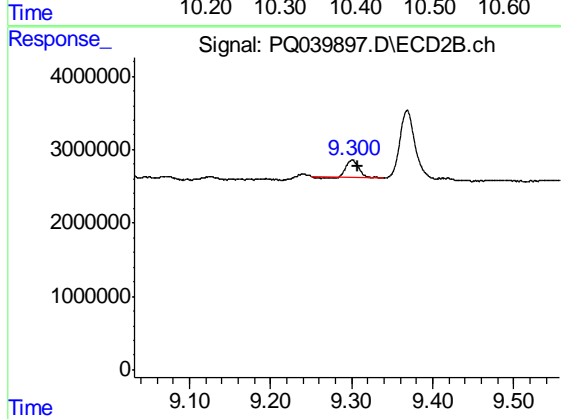
#37 AR-1262-2

R.T.: 9.010 min
 Delta R.T.: -0.006 min
 Response: 18213593
 Conc: 30.40 ng/ml



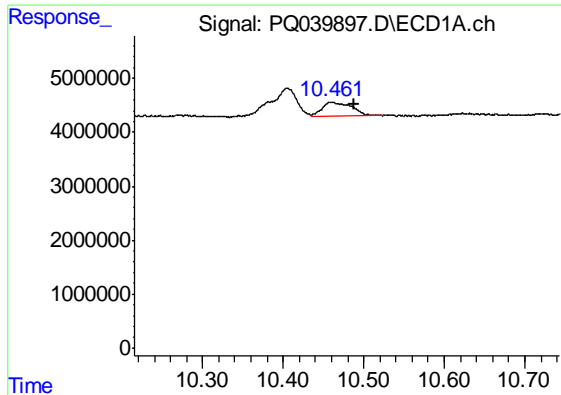
#38 AR-1262-3

R.T.: 10.405 min
 Delta R.T.: 0.012 min
 Response: 11685975
 Conc: 25.44 ng/ml



#38 AR-1262-3

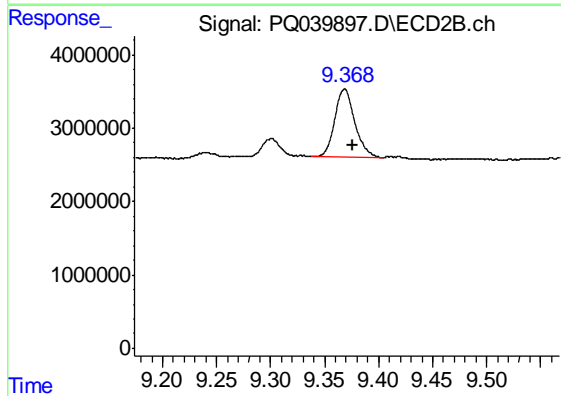
R.T.: 9.301 min
 Delta R.T.: -0.007 min
 Response: 2412132
 Conc: 10.46 ng/ml



#39 AR-1262-4

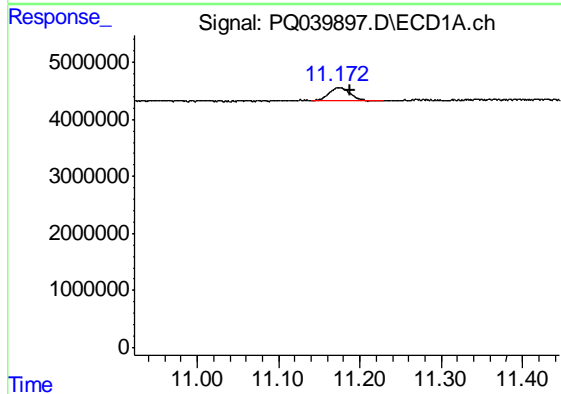
R.T.: 10.461 min
 Delta R.T.: -0.027 min
 Response: 6451068
 Conc: 17.53 ng/ml

Instrument :
 ECD_Q
 ClientSampled :
 ETMD0



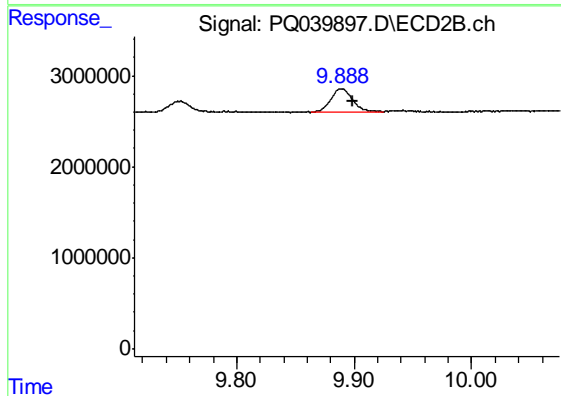
#39 AR-1262-4

R.T.: 9.368 min
 Delta R.T.: -0.007 min
 Response: 11904969
 Conc: 28.00 ng/ml



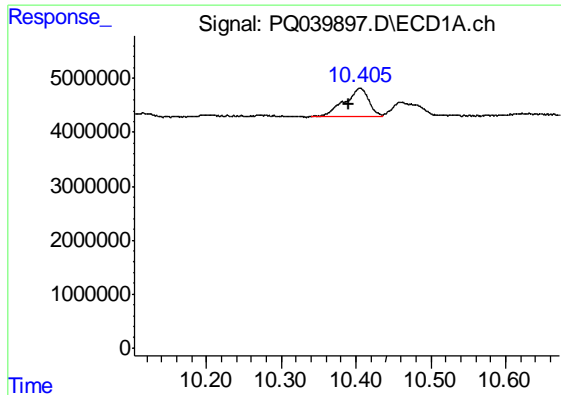
#40 AR-1262-5

R.T.: 11.174 min
 Delta R.T.: -0.014 min
 Response: 4145179
 Conc: 17.24 ng/ml



#40 AR-1262-5

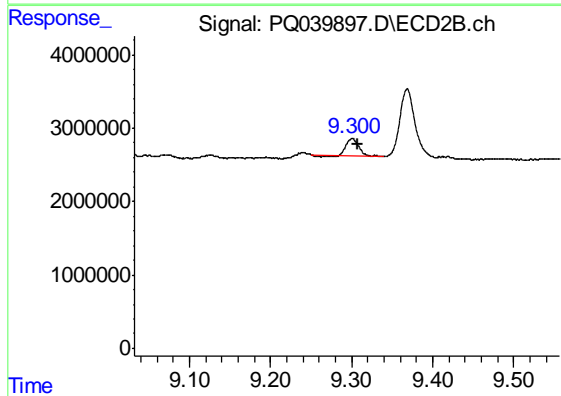
R.T.: 9.889 min
 Delta R.T.: -0.009 min
 Response: 3377547
 Conc: 18.86 ng/ml



#41 AR-1268-1

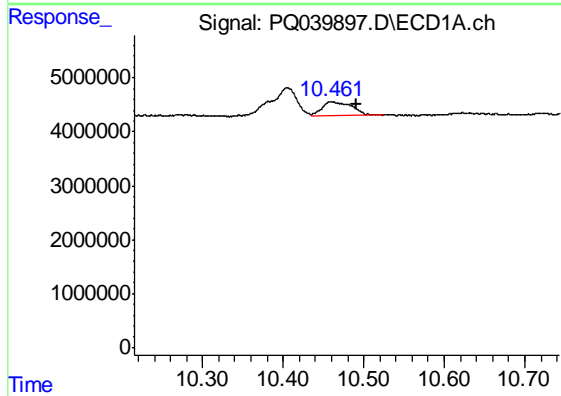
R.T.: 10.405 min
 Delta R.T.: 0.014 min
 Response: 11685975
 Conc: 9.65 ng/ml

Instrument :
 ECD_Q
 ClientSampled :
 ETMD0



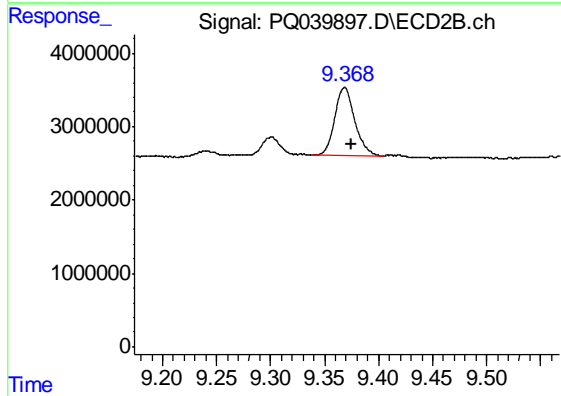
#41 AR-1268-1

R.T.: 9.301 min
 Delta R.T.: -0.006 min
 Response: 2412132
 Conc: 2.33 ng/ml



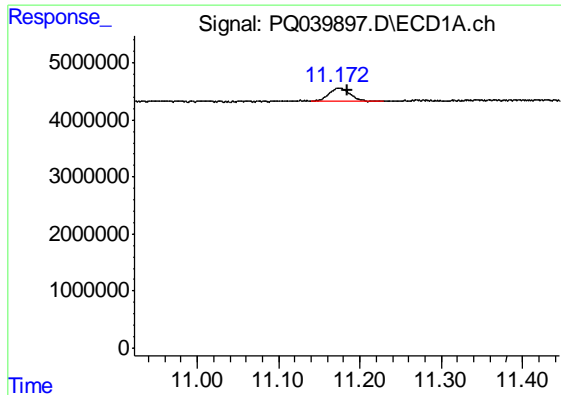
#42 AR-1268-2

R.T.: 10.461 min
 Delta R.T.: -0.030 min
 Response: 6451068
 Conc: 5.60 ng/ml



#42 AR-1268-2

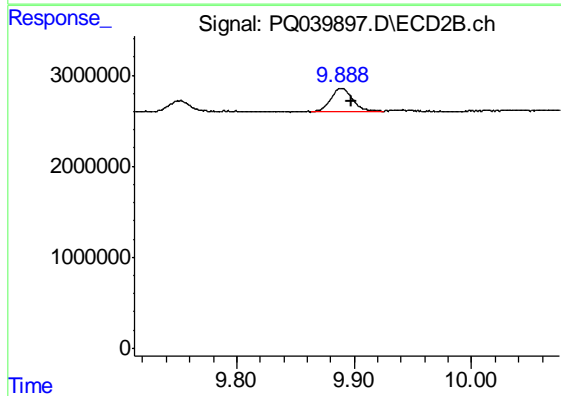
R.T.: 9.368 min
 Delta R.T.: -0.006 min
 Response: 11904969
 Conc: 12.44 ng/ml



#44 AR-1268-4

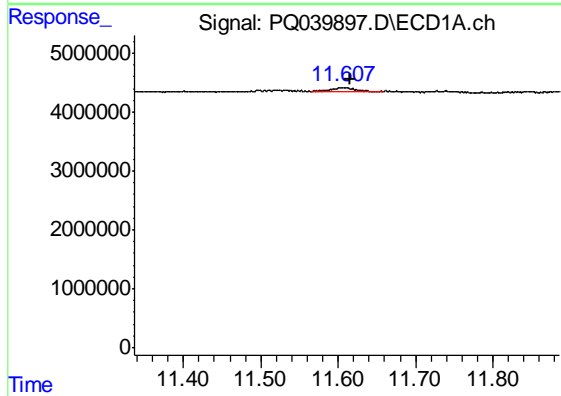
R.T.: 11.174 min
 Delta R.T.: -0.012 min
 Response: 4145179
 Conc: 10.97 ng/ml

Instrument :
 ECD_Q
 ClientSampleId :
 ETMD0



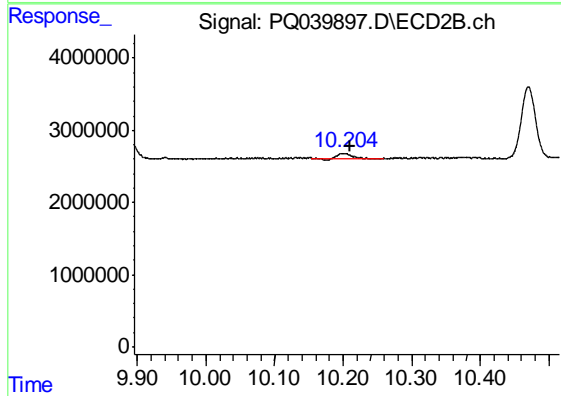
#44 AR-1268-4

R.T.: 9.889 min
 Delta R.T.: -0.008 min
 Response: 3377547
 Conc: 11.26 ng/ml



#45 AR-1268-5

R.T.: 11.606 min
 Delta R.T.: -0.010 min
 Response: 1403302
 Conc: 0.42 ng/ml



#45 AR-1268-5

R.T.: 10.204 min
 Delta R.T.: -0.005 min
 Response: 837378
 Conc: 0.34 ng/ml