

Data Path : Z:\pestpcbsrv\HPCHEM1\ECD\_Q\Data\PQ052219\  
 Data File : PQ040067.D  
 Signal(s) : Signal #1: ECD1A.ch Signal #2: ECD2B.ch  
 Acq On : 22 May 2019 09:48  
 Operator : SM\AJ  
 Sample : AR1660ICC200  
 Misc :  
 ALS Vial : 4 Sample Multiplier: 1

Instrument :  
 ECD\_Q  
 ClientSampleId :  
 AR1660201

Integration File signal 1: autoint1.e  
 Integration File signal 2: autoint2.e  
 Quant Time: May 22 13:43:50 2019  
 Quant Method : Z:\pestpcbsrv\HPCHEM1\ECD\_Q\Method\PQ052219CLP.M  
 Quant Title : GC EXTRACTABLES  
 QLast Update : Wed May 22 13:41:57 2019  
 Response via : Initial Calibration  
 Integrator: ChemStation

Volume Inj. : 1 µl  
 Signal #1 Phase : ZB MR1 Signal #2 Phase: ZB MR2  
 Signal #1 Info : 30Mx0.32mmx 0.5µm Signal #2 Info : 30M x 0.32mm x 0.25µm

Compound	RT#1	RT#2	Resp#1	Resp#2	ng/ml	ng/ml
-----						
System Monitoring Compounds						
1) SA Tetrachlo...	5.611	4.741	34614817	23200416	10.504	10.796
2) SA Decachlor...	11.936	10.469	150.9E6	85889158	21.019	20.477
Target Compounds						
3) L1 AR-1016-1	7.060	6.188	35371434	27460430	216.182	215.350
4) L1 AR-1016-2	7.085	6.209	56316633	40341418	215.940	204.324
5) L1 AR-1016-3	7.156	6.423	36630936	23153354	214.573	221.712
6) L1 AR-1016-4	7.270	6.477	30402507	18406030	221.504	222.701
7) L1 AR-1016-5	7.603	6.729	29610792	25761943	213.401	232.232
31) L7 AR-1260-1	8.822	7.892	70476737	58069939	212.976	215.278
32) L7 AR-1260-2	9.092	8.096	85490262	71899034	214.035	210.175
33) L7 AR-1260-3	9.465	8.260	70823659	66687445	215.802	211.067
34) L7 AR-1260-4	9.705	8.757	77468762	55678621	211.012	208.430
35) L7 AR-1260-5	10.046	9.011	157.8E6	135.5E6	206.053	202.335

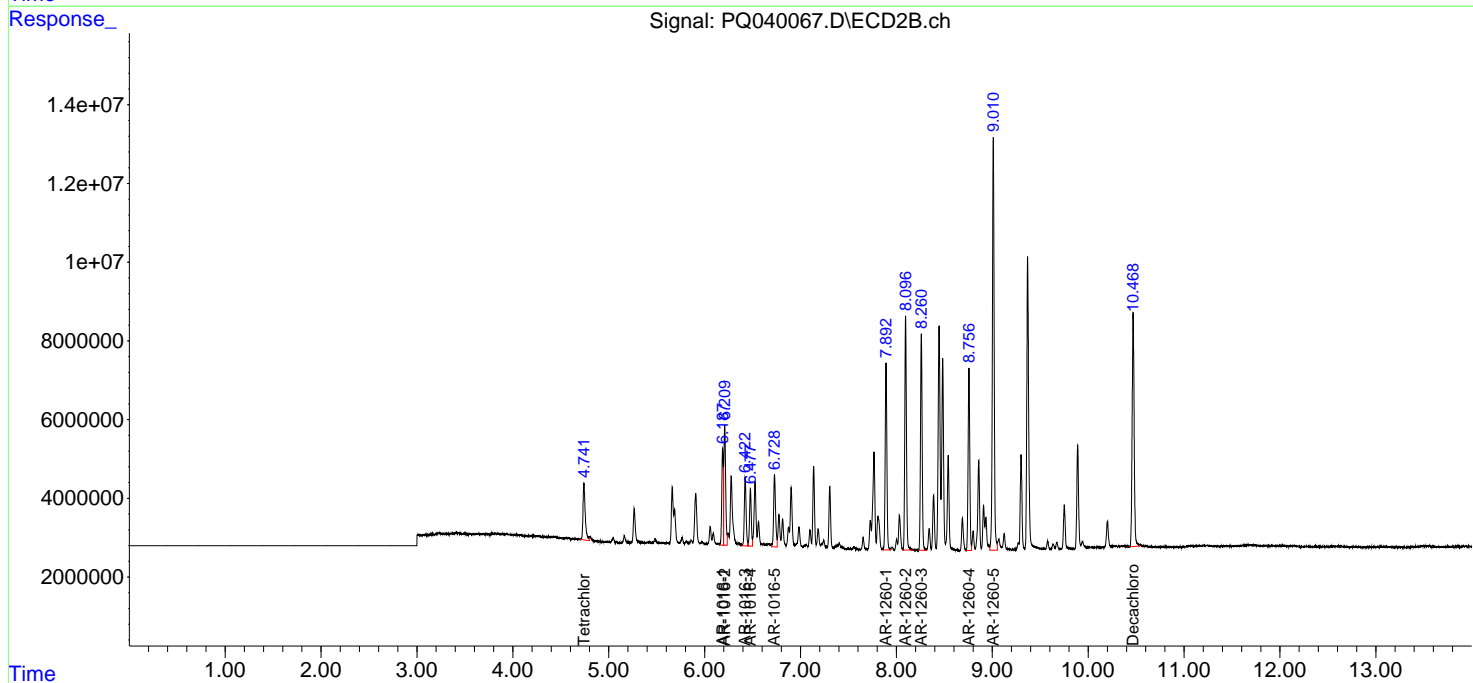
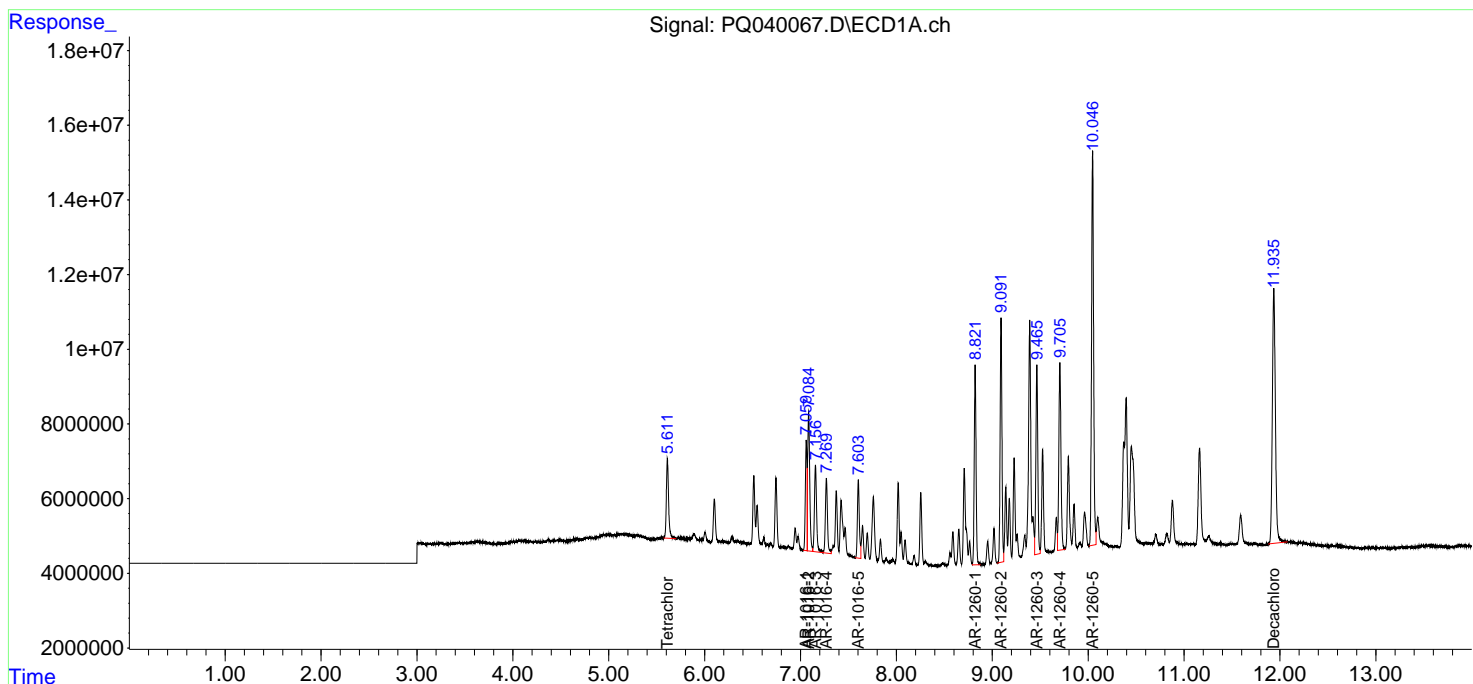
(f)=RT Delta > 1/2 Window (#)=Amounts differ by > 25% (m)=manual int.

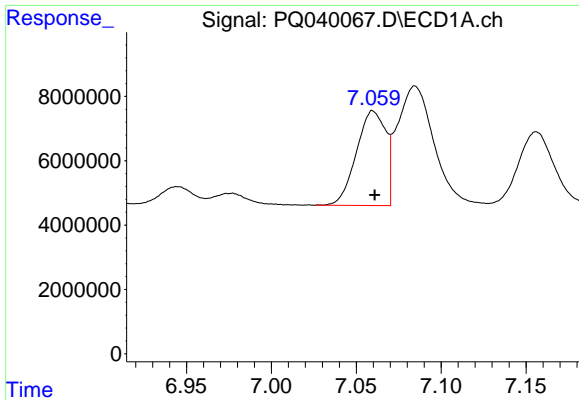
Data Path : Z:\pestpcbsrv\HPCHEM1\ECD\_Q\Data\PQ052219\  
 Data File : PQ040067.D  
 Signal(s) : Signal #1: ECD1A.ch Signal #2: ECD2B.ch  
 Acq On : 22 May 2019 09:48  
 Operator : SM\AJ  
 Sample : AR1660ICC200  
 Misc :  
 ALS Vial : 4 Sample Multiplier: 1

Instrument :  
 ECD\_Q  
 Client Sampled :  
 AR1660201

Integration File signal 1: autoint1.e  
 Integration File signal 2: autoint2.e  
 Quant Time: May 22 13:43:50 2019  
 Quant Method : Z:\pestpcbsrv\HPCHEM1\ECD\_Q\Method\PQ052219CLP.M  
 Quant Title : GC EXTRACTABLES  
 QLast Update : Wed May 22 13:41:57 2019  
 Response via : Initial Calibration  
 Integrator: ChemStation

Volume Inj. : 1 µl  
 Signal #1 Phase : ZB MR1 Signal #2 Phase: ZB MR2  
 Signal #1 Info : 30Mx0.32mmx 0.5µm Signal #2 Info : 30M x 0.32mm x 0.25µm

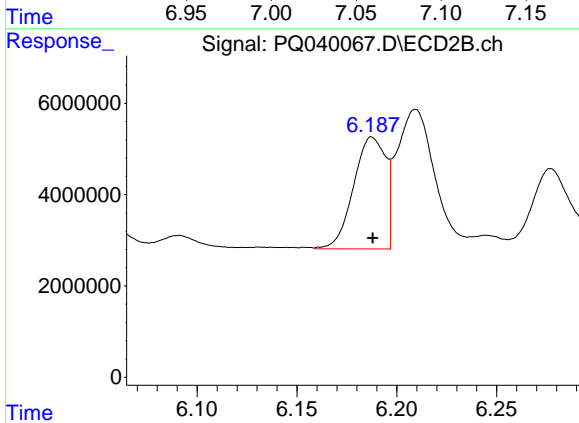




#3 AR-1016-1

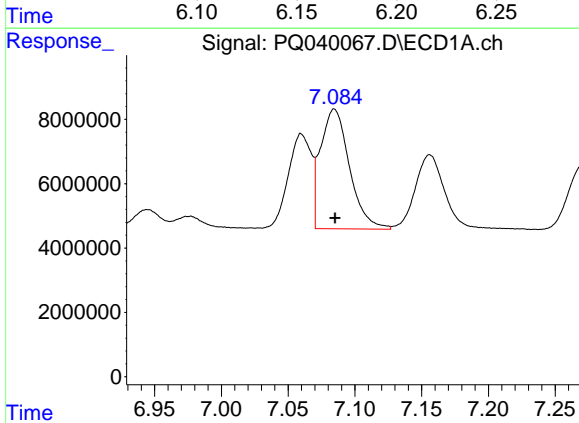
R.T.: 7.060 min  
 Delta R.T.: 0.000 min  
 Response: 35371434  
 Conc: 216.18 ng/ml

Instrument :  
 ECD\_Q  
 ClientSampleId :  
 AR1660201



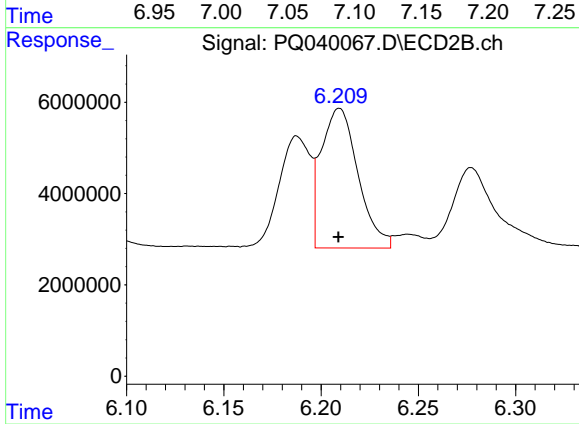
#3 AR-1016-1

R.T.: 6.188 min  
 Delta R.T.: 0.000 min  
 Response: 27460430  
 Conc: 215.35 ng/ml



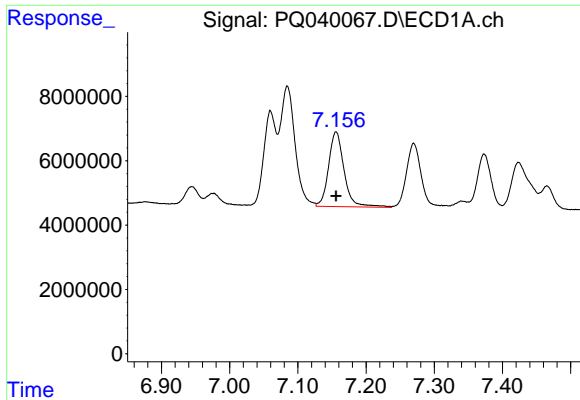
#4 AR-1016-2

R.T.: 7.085 min  
 Delta R.T.: 0.000 min  
 Response: 56316633  
 Conc: 215.94 ng/ml



#4 AR-1016-2

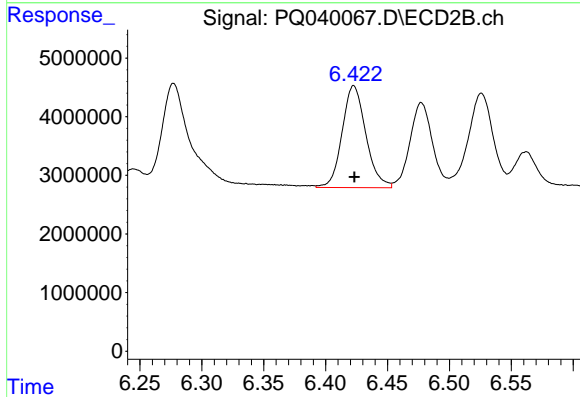
R.T.: 6.209 min  
 Delta R.T.: 0.000 min  
 Response: 40341418  
 Conc: 204.32 ng/ml



#5 AR-1016-3

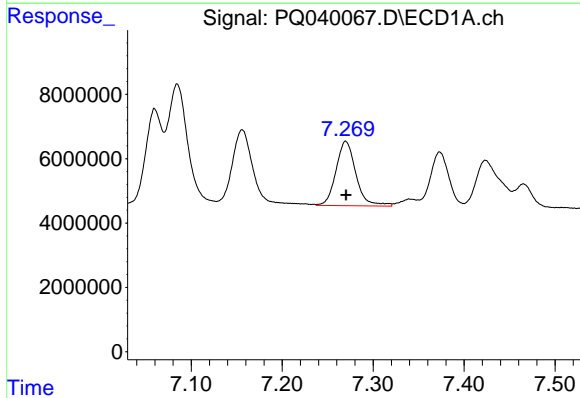
R.T.: 7.156 min  
 Delta R.T.: 0.000 min  
 Response: 36630936  
 Conc: 214.57 ng/ml

Instrument :  
 ECD\_Q  
 ClientSampled :  
 AR1660201



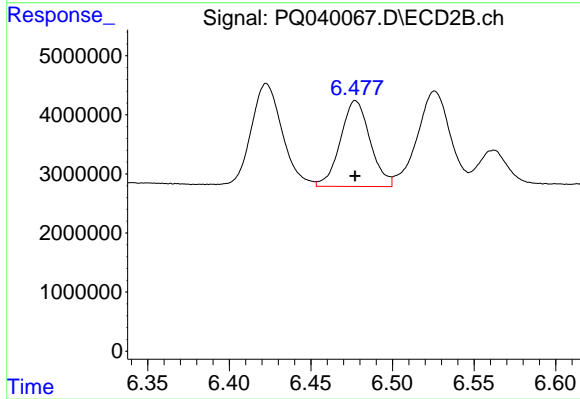
#5 AR-1016-3

R.T.: 6.423 min  
 Delta R.T.: 0.000 min  
 Response: 23153354  
 Conc: 221.71 ng/ml



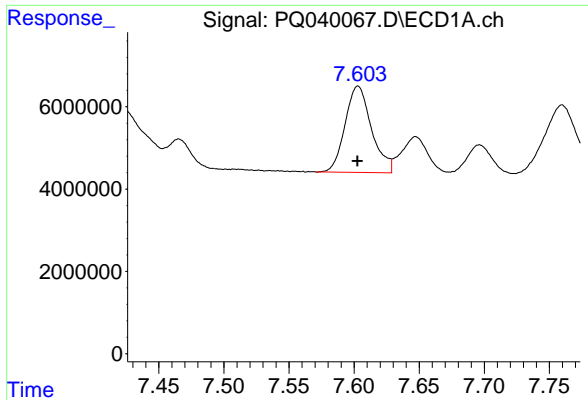
#6 AR-1016-4

R.T.: 7.270 min  
 Delta R.T.: 0.000 min  
 Response: 30402507  
 Conc: 221.50 ng/ml



#6 AR-1016-4

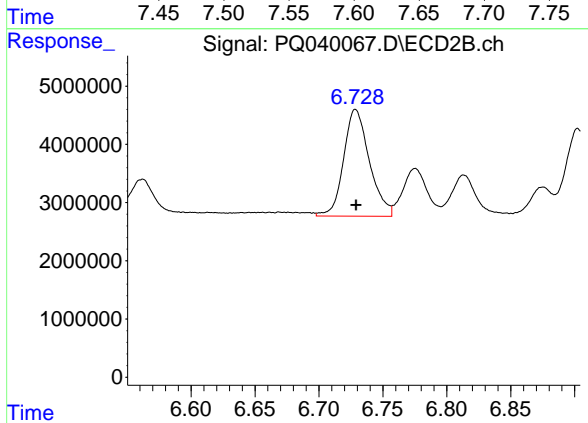
R.T.: 6.477 min  
 Delta R.T.: 0.000 min  
 Response: 18406030  
 Conc: 222.70 ng/ml



#7 AR-1016-5

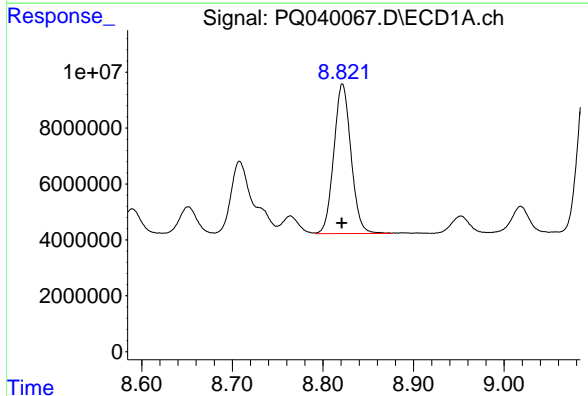
R.T.: 7.603 min  
 Delta R.T.: 0.000 min  
 Response: 29610792  
 Conc: 213.40 ng/ml

Instrument :  
 ECD\_Q  
 ClientSampleId :  
 AR1660201



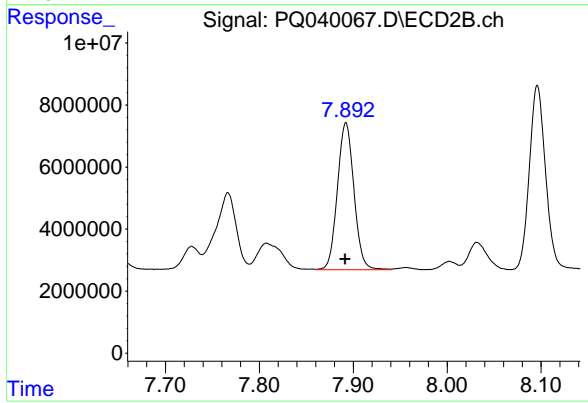
#7 AR-1016-5

R.T.: 6.729 min  
 Delta R.T.: 0.000 min  
 Response: 25761943  
 Conc: 232.23 ng/ml



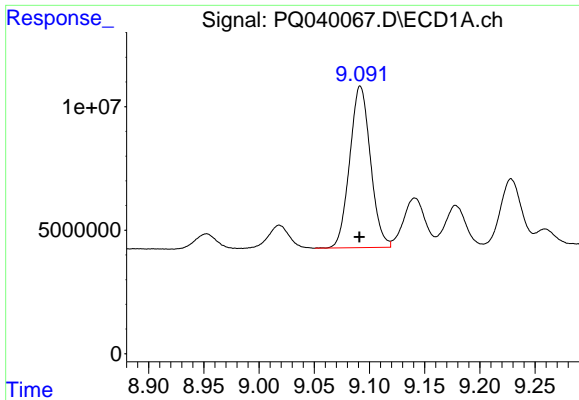
#31 AR-1260-1

R.T.: 8.822 min  
 Delta R.T.: 0.000 min  
 Response: 70476737  
 Conc: 212.98 ng/ml



#31 AR-1260-1

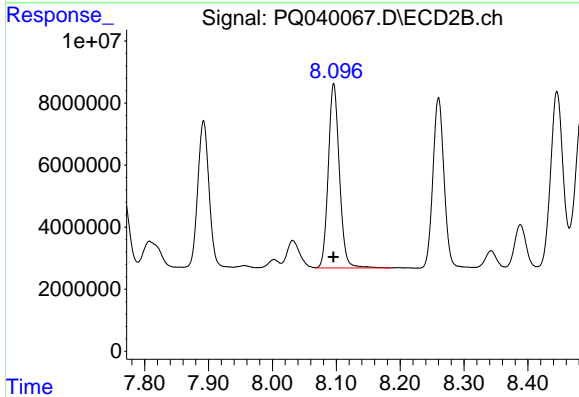
R.T.: 7.892 min  
 Delta R.T.: 0.001 min  
 Response: 58069939  
 Conc: 215.28 ng/ml



#32 AR-1260-2

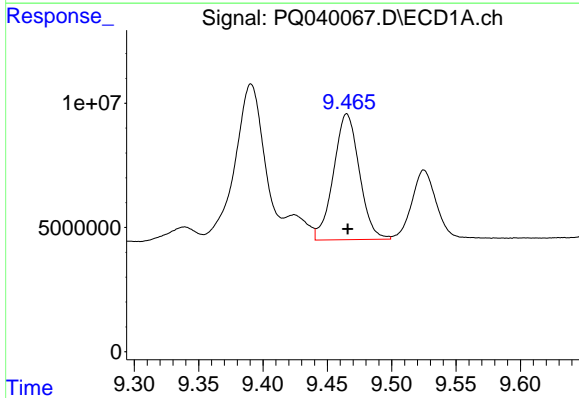
R.T.: 9.092 min  
 Delta R.T.: 0.000 min  
 Response: 85490262  
 Conc: 214.04 ng/ml

Instrument :  
 ECD\_Q  
 ClientSampled :  
 AR1660201



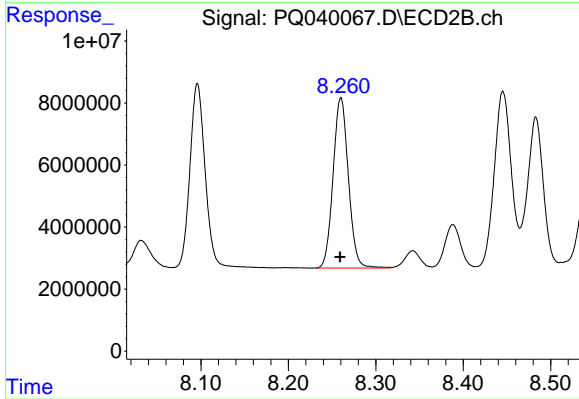
#32 AR-1260-2

R.T.: 8.096 min  
 Delta R.T.: 0.000 min  
 Response: 71899034  
 Conc: 210.18 ng/ml



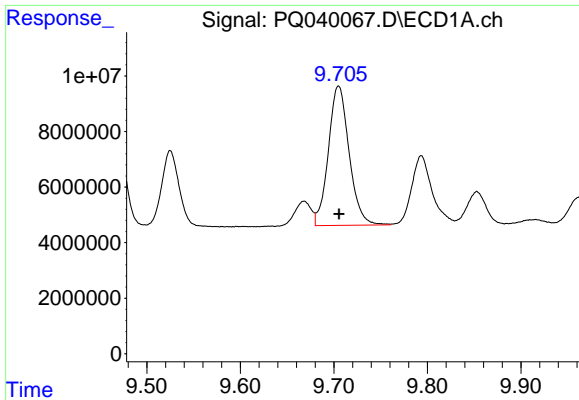
#33 AR-1260-3

R.T.: 9.465 min  
 Delta R.T.: 0.000 min  
 Response: 70823659  
 Conc: 215.80 ng/ml



#33 AR-1260-3

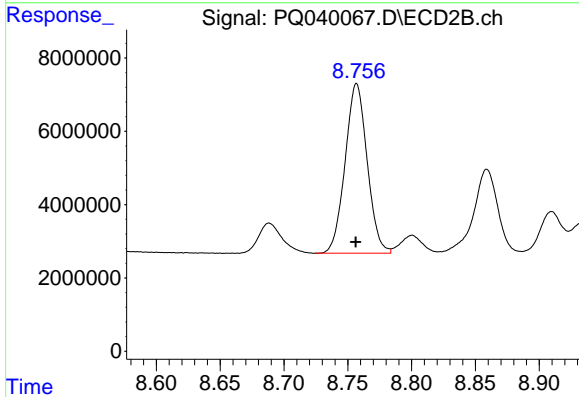
R.T.: 8.260 min  
 Delta R.T.: 0.000 min  
 Response: 66687445  
 Conc: 211.07 ng/ml



#34 AR-1260-4

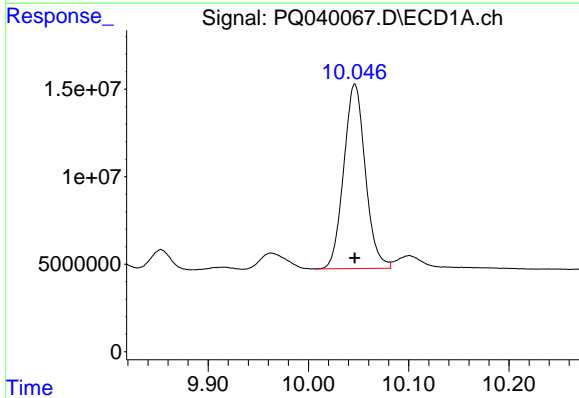
R.T.: 9.705 min  
 Delta R.T.: 0.000 min  
 Response: 77468762  
 Conc: 211.01 ng/ml

Instrument :  
 ECD\_Q  
 ClientSampled :  
 AR1660201



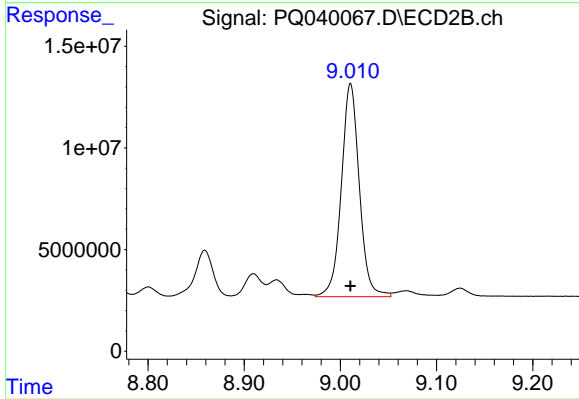
#34 AR-1260-4

R.T.: 8.757 min  
 Delta R.T.: 0.000 min  
 Response: 55678621  
 Conc: 208.43 ng/ml



#35 AR-1260-5

R.T.: 10.046 min  
 Delta R.T.: 0.000 min  
 Response: 157781444  
 Conc: 206.05 ng/ml



#35 AR-1260-5

R.T.: 9.011 min  
 Delta R.T.: 0.000 min  
 Response: 135482622  
 Conc: 202.34 ng/ml