

Data Path : Z:\pestpcbsrv\HPCHEM1\ECD\_Q\Data\PQ052819\  
 Data File : PQ040324.D  
 Signal(s) : Signal #1: ECD1A.ch Signal #2: ECD2B.ch  
 Acq On : 28 May 2019 21:47  
 Operator : SM\AJ  
 Sample : K2948-14  
 Misc :  
 ALS Vial : 32 Sample Multiplier: 1

Instrument :  
 ECD\_Q  
 ClientSampled :  
 BFH93

Integration File signal 1: autoint1.e  
 Integration File signal 2: autoint2.e  
 Quant Time: May 29 01:43:40 2019  
 Quant Method : Z:\pestpcbsrv\HPCHEM1\ECD\_Q\Method\PQ052219CLP.M  
 Quant Title : GC EXTRACTABLES  
 QLast Update : Thu May 23 04:10:58 2019  
 Response via : Initial Calibration  
 Integrator: ChemStation

Volume Inj. : 1 µl  
 Signal #1 Phase : ZB MR1 Signal #2 Phase: ZB MR2  
 Signal #1 Info : 30Mx0.32mmx 0.5µm Signal #2 Info : 30M x 0.32mm x 0.25µm

Compound	RT#1	RT#2	Resp#1	Resp#2	ng/ml	ng/ml
-----						
System Monitoring Compounds						
1) SA Tetrachlo...	5.594	4.733	50328170	37973702	15.363	17.680
2) SA Decachlor...	11.899	10.450	211.8E6	127.1E6	29.647	30.576
Target Compounds						
3) L1 AR-1016-1	7.080	6.197	27611250	3595269	165.048	28.027 #
4) L1 AR-1016-2	7.080	6.197	27611250	3595269	105.025	18.627 #
5) L1 AR-1016-3	7.148	6.465	3695689	14941210	21.653	138.538 #
6) L1 AR-1016-4	7.290	6.465	2764581	14941210	20.001	175.471 #
8) L2 AR-1221-1	0.000	5.013	0	596678	N.D.	24.347 #
9) L2 AR-1221-2	5.989	5.151	1148646	4050697	52.136	248.696 #
10) L2 AR-1221-3	6.084	5.255	3155163	3034606	35.716	49.906 #
11) L3 AR-1232-1	6.084	5.255	3155163	3034606	48.715	66.224 #
12) L3 AR-1232-2	6.727	6.197	26608386	3595269	671.122	59.935 #
13) L3 AR-1232-3	7.080	6.465	27611250	14941210	341.672	424.855
14) L3 AR-1232-4	7.290	6.512	2764581	20095361	66.141	680.086 #
15) L3 AR-1232-5	7.354	6.720	19211440	-90882	606.183	N.D. #
16) L4 AR-1242-1	7.042	6.197	4921195	3595269	50.757	48.619
17) L4 AR-1242-2	7.080	6.197	27611250	3595269	191.057	33.771 #
18) L4 AR-1242-3	7.148	6.465	3695689	14941210	39.700	247.681 #
19) L4 AR-1242-4	7.290	6.512	2764581	20095361	36.758	337.168 #
20) L4 AR-1242-5	8.070	7.123	1447094	1548277	16.692	19.212
21) L5 AR-1248-1	7.080	6.197	27611250	3595269	356.723	62.393 #
22) L5 AR-1248-2	7.354	6.465	19211440	14941210	170.568	169.942
23) L5 AR-1248-3	0.000	6.512	0	20095361	N.D.	222.089 #
24) L5 AR-1248-4	8.070	6.720	1447094	-90882	9.585	N.D. #
25) L5 AR-1248-5	8.070	7.172	1447094	854943	9.612	7.530
26) L6 AR-1254-1	7.999	7.123	2111994	1548277	12.110	8.083 #
27) L6 AR-1254-2	8.234	7.293	4726933	3524319	17.092	20.286
28) L6 AR-1254-3	8.630	7.749	1874534	2504450	6.316	8.666 #
29) L6 AR-1254-4	8.931	7.989	2787368	1300577	13.412	7.284 #
30) L6 AR-1254-5	9.368	8.431	6829739	4121594	23.715	15.998 #
31) L7 AR-1260-1	8.801	7.879	3480304	3701287	10.470	13.502 #
32) L7 AR-1260-2	9.070	8.083	14514148	12640326	35.929	36.542
33) L7 AR-1260-3	9.444	8.246	4422887	2580687	13.407	8.047 #
34) L7 AR-1260-4	9.683	8.742	2635732	2049821	7.152	7.544
35) L7 AR-1260-5	10.022	8.997	7873411	8485502	10.224	12.624
36) L8 AR-1262-1	9.504	8.526	1849278	1554120	13.303	13.687
37) L8 AR-1262-2	10.022	8.997	7873411	8485502	13.604	17.103 #
38) L8 AR-1262-3	10.370	9.286	3175909	2304761	7.511	10.962 #
39) L8 AR-1262-4	10.423	9.354	5522839	5975550	14.622	15.782
40) L8 AR-1262-5	11.131	9.875	8132295	4624988	34.611	28.526
41) L9 AR-1268-1	10.370	9.286	3175909	2304761	5.272	5.051
42) L9 AR-1268-2	10.423	9.354	5522839	5975550	8.976	13.668 #

Data Path : Z:\pestpcbsrv\HPCHEM1\ECD\_Q\Data\PQ052819\  
 Data File : PQ040324.D  
 Signal(s) : Signal #1: ECD1A.ch Signal #2: ECD2B.ch  
 Acq On : 28 May 2019 21:47  
 Operator : SM\AJ  
 Sample : K2948-14  
 Misc :  
 ALS Vial : 32 Sample Multiplier: 1

Instrument :  
 ECD\_Q  
 ClientSampleId :  
 BFH93

Integration File signal 1: autoint1.e  
 Integration File signal 2: autoint2.e  
 Quant Time: May 29 01:43:40 2019  
 Quant Method : Z:\pestpcbsrv\HPCHEM1\ECD\_Q\Method\PQ052219CLP.M  
 Quant Title : GC EXTRACTABLES  
 QLast Update : Thu May 23 04:10:58 2019  
 Response via : Initial Calibration  
 Integrator: ChemStation

Volume Inj. : 1 µl  
 Signal #1 Phase : ZB MR1 Signal #2 Phase: ZB MR2  
 Signal #1 Info : 30Mx0.32mmx 0.5µm Signal #2 Info : 30M x 0.32mm x 0.25µm

	Compound	RT#1	RT#2	Resp#1	Resp#2	ng/ml	ng/ml
43)	L9 AR-1268-3	10.678	9.561	1884876	650070	3.470	1.732 #
44)	L9 AR-1268-4	11.131	9.875	8132295	4624988	39.871	33.567
45)	L9 AR-1268-5	11.560	10.184	4325253	1939456	2.341	1.643 #

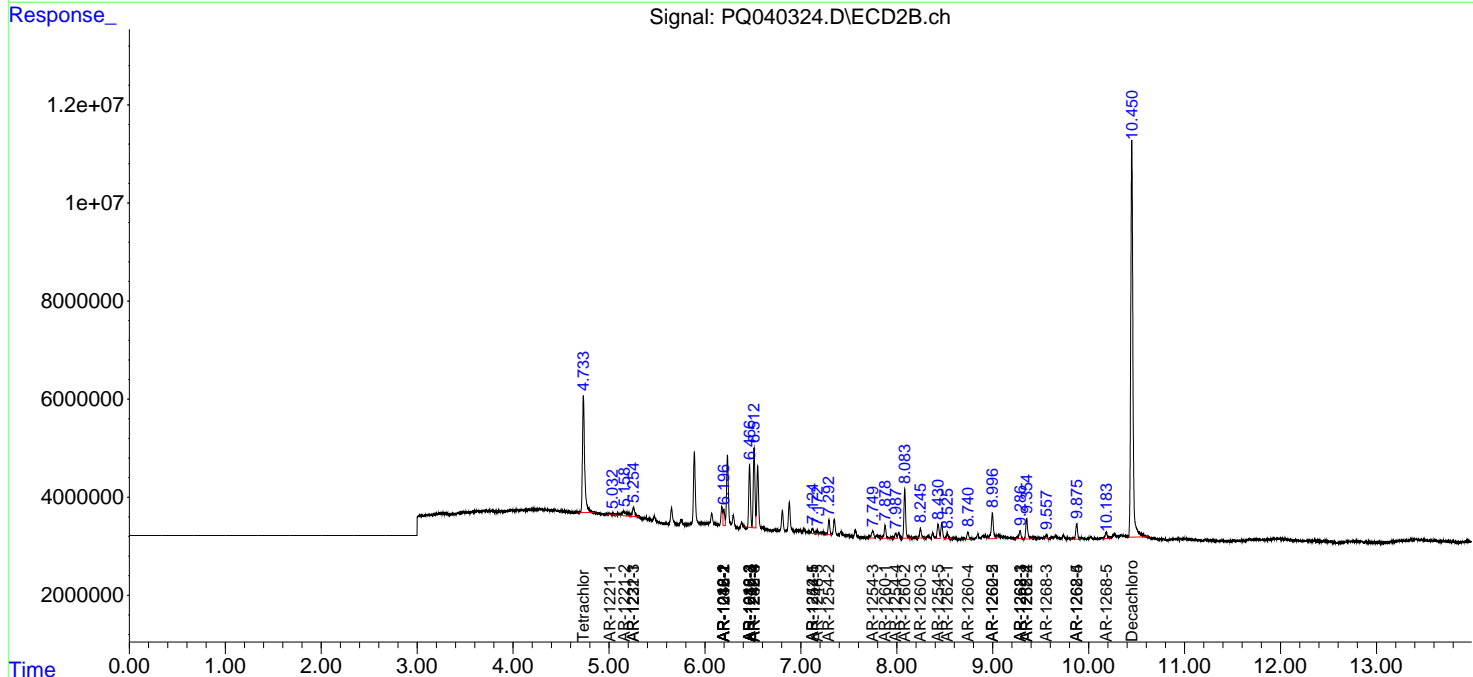
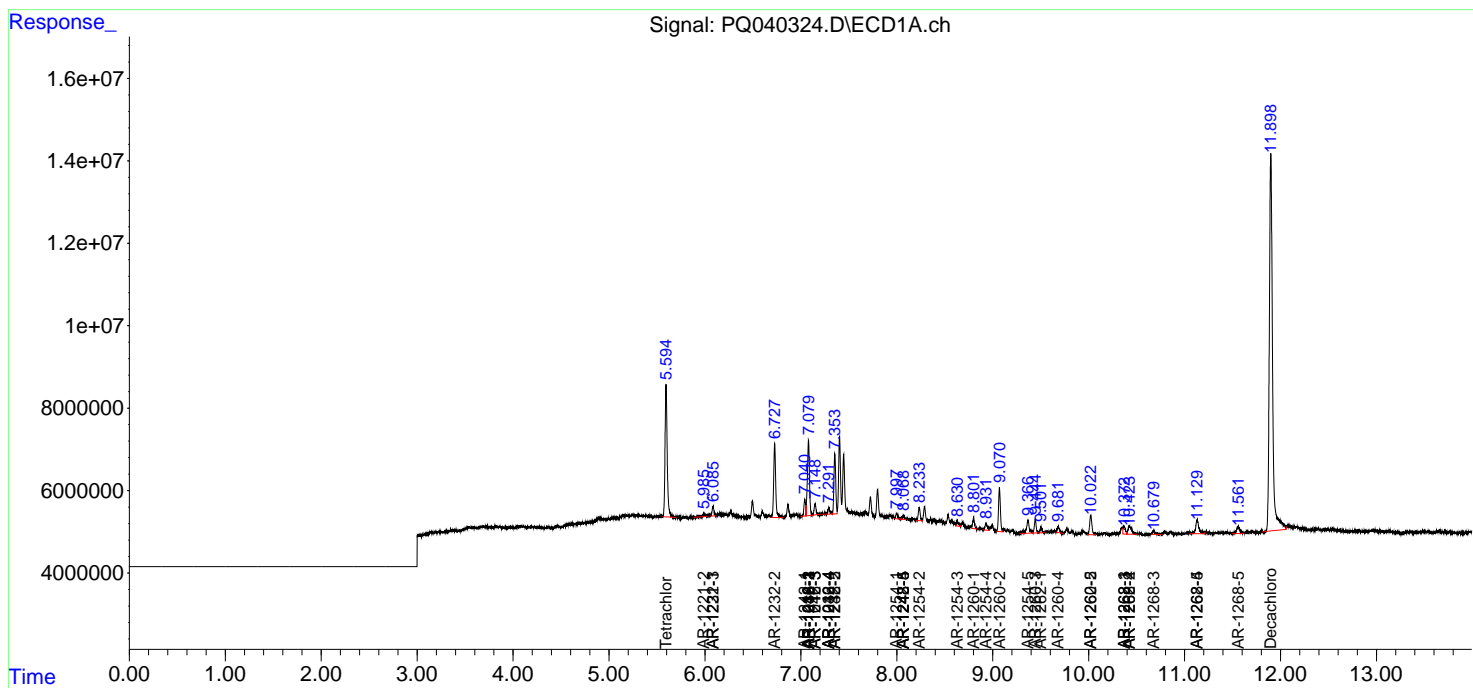
(f)=RT Delta > 1/2 Window (#)=Amounts differ by > 25% (m)=manual int.

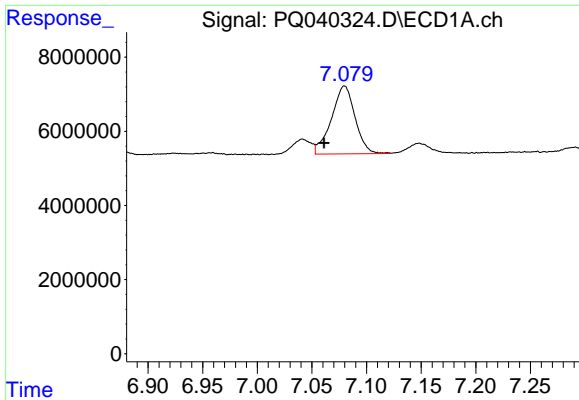
Data Path : Z:\pestpcbsrv\HPCHEM1\ECD\_Q\Data\PQ052819\  
 Data File : PQ040324.D  
 Signal(s) : Signal #1: ECD1A.ch Signal #2: ECD2B.ch  
 Acq On : 28 May 2019 21:47  
 Operator : SM\AJ  
 Sample : K2948-14  
 Misc :  
 ALS Vial : 32 Sample Multiplier: 1

Instrument :  
 ECD\_Q  
 Client Sampled :  
 BFH93

Integration File signal 1: autoint1.e  
 Integration File signal 2: autoint2.e  
 Quant Time: May 29 01:43:40 2019  
 Quant Method : Z:\pestpcbsrv\HPCHEM1\ECD\_Q\Method\PQ052219CLP.M  
 Quant Title : GC EXTRACTABLES  
 QLast Update : Thu May 23 04:10:58 2019  
 Response via : Initial Calibration  
 Integrator: ChemStation

Volume Inj. : 1 µl  
 Signal #1 Phase : ZB MR1 Signal #2 Phase: ZB MR2  
 Signal #1 Info : 30Mx0.32mmx 0.5µm Signal #2 Info : 30M x 0.32mm x 0.25µm

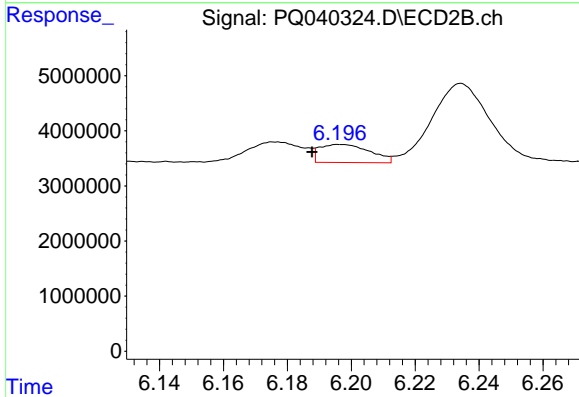




#3 AR-1016-1

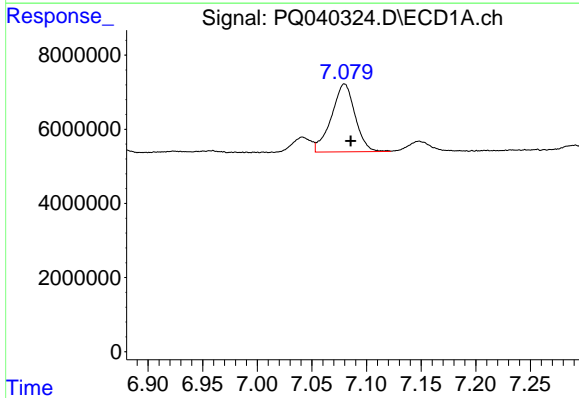
R.T.: 7.080 min  
 Delta R.T.: 0.019 min  
 Response: 27611250  
 Conc: 165.05 ng/ml

Instrument :  
 ECD\_Q  
 ClientSampleId :  
 BFH93



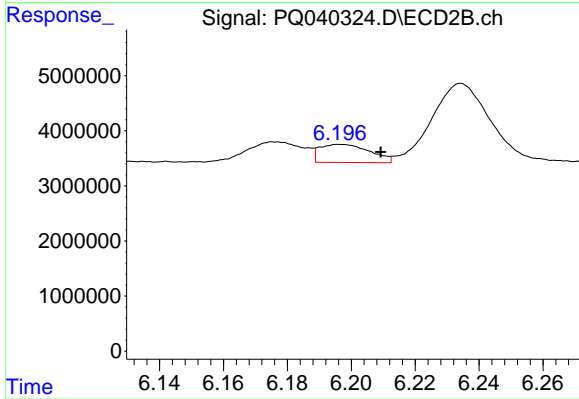
#3 AR-1016-1

R.T.: 6.197 min  
 Delta R.T.: 0.009 min  
 Response: 3595269  
 Conc: 28.03 ng/ml



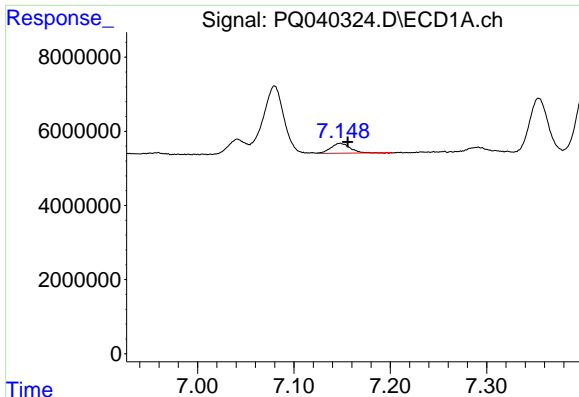
#4 AR-1016-2

R.T.: 7.080 min  
 Delta R.T.: -0.006 min  
 Response: 27611250  
 Conc: 105.02 ng/ml



#4 AR-1016-2

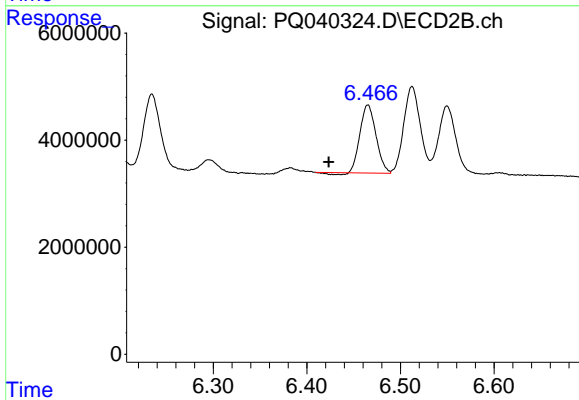
R.T.: 6.197 min  
 Delta R.T.: -0.013 min  
 Response: 3595269  
 Conc: 18.63 ng/ml



#5 AR-1016-3

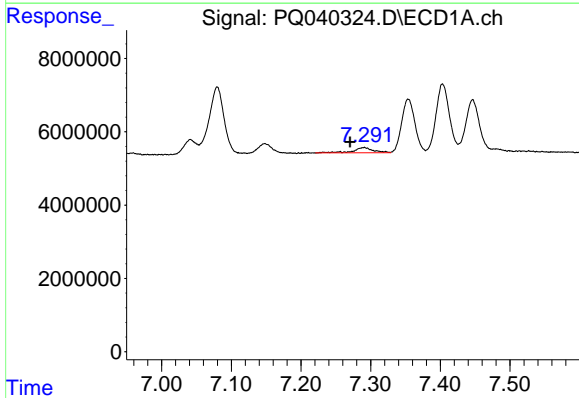
R.T.: 7.148 min  
 Delta R.T.: -0.008 min  
 Response: 3695689  
 Conc: 21.65 ng/ml

Instrument :  
 ECD\_Q  
 ClientSampleId :  
 BFH93



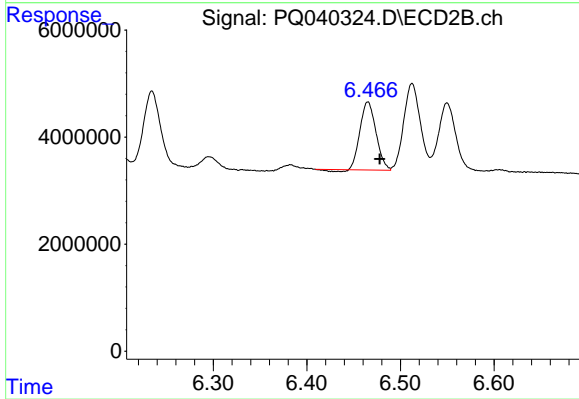
#5 AR-1016-3

R.T.: 6.465 min  
 Delta R.T.: 0.042 min  
 Response: 14941210  
 Conc: 138.54 ng/ml



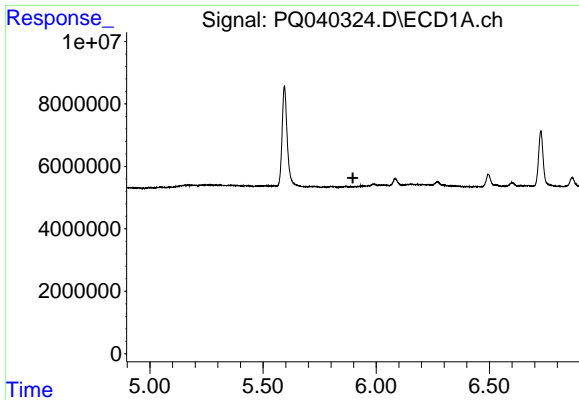
#6 AR-1016-4

R.T.: 7.290 min  
 Delta R.T.: 0.020 min  
 Response: 2764581  
 Conc: 20.00 ng/ml



#6 AR-1016-4

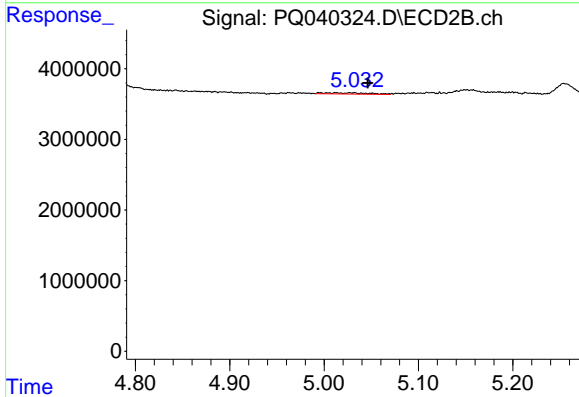
R.T.: 6.465 min  
 Delta R.T.: -0.013 min  
 Response: 14941210  
 Conc: 175.47 ng/ml



#8 AR-1221-1

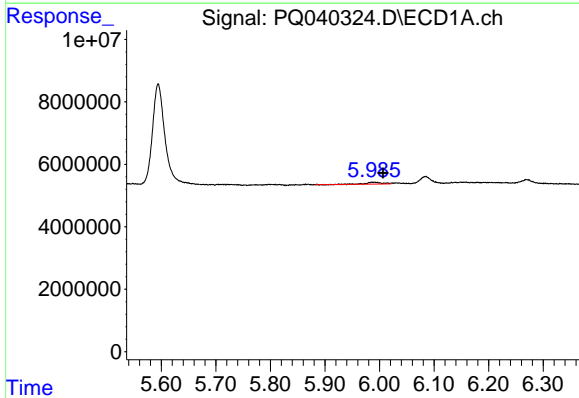
R.T.: 0.000 min  
Exp R.T.: 5.897 min  
Response: 0  
Conc: N.D.

Instrument :  
ECD\_Q  
ClientSampled :  
BFH93



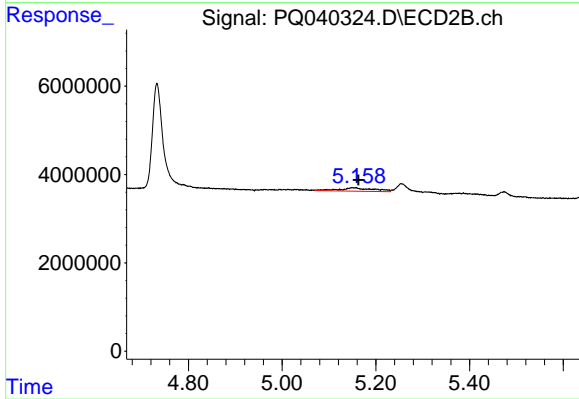
#8 AR-1221-1

R.T.: 5.013 min  
Delta R.T.: -0.033 min  
Response: 596678  
Conc: 24.35 ng/ml



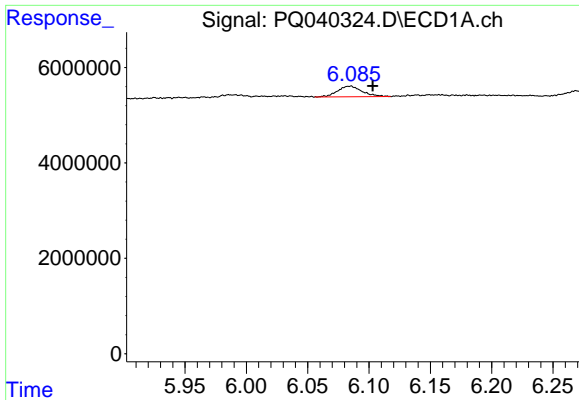
#9 AR-1221-2

R.T.: 5.989 min  
Delta R.T.: -0.018 min  
Response: 1148646  
Conc: 52.14 ng/ml



#9 AR-1221-2

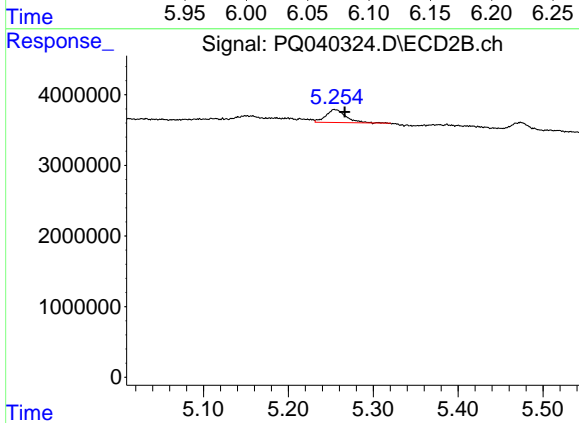
R.T.: 5.151 min  
Delta R.T.: -0.012 min  
Response: 4050697  
Conc: 248.70 ng/ml



#10 AR-1221-3

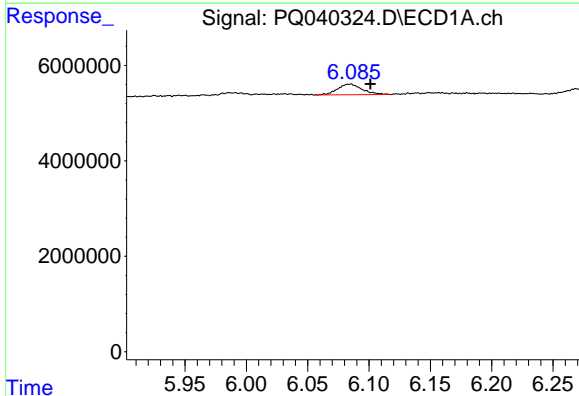
R.T.: 6.084 min  
Delta R.T.: -0.019 min  
Response: 3155163  
Conc: 35.72 ng/ml

Instrument :  
ECD\_Q  
ClientSampleId :  
BFH93



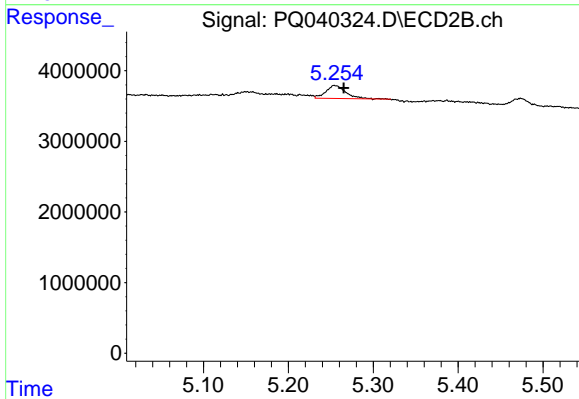
#10 AR-1221-3

R.T.: 5.255 min  
Delta R.T.: -0.011 min  
Response: 3034606  
Conc: 49.91 ng/ml



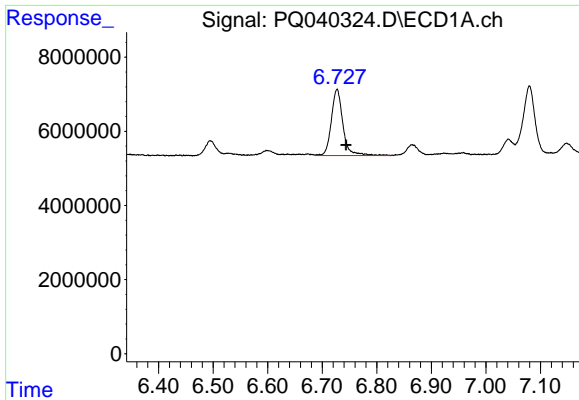
#11 AR-1232-1

R.T.: 6.084 min  
Delta R.T.: -0.017 min  
Response: 3155163  
Conc: 48.71 ng/ml



#11 AR-1232-1

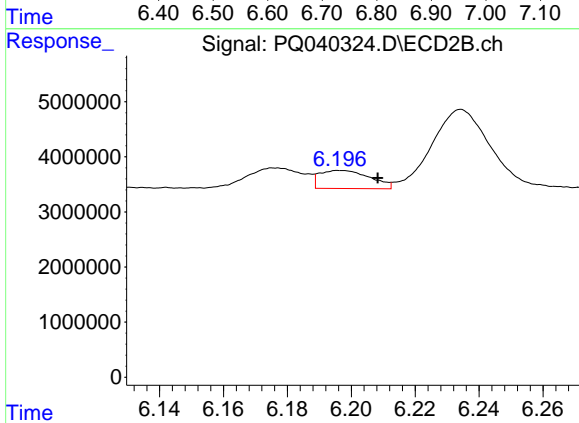
R.T.: 5.255 min  
Delta R.T.: -0.010 min  
Response: 3034606  
Conc: 66.22 ng/ml



#12 AR-1232-2

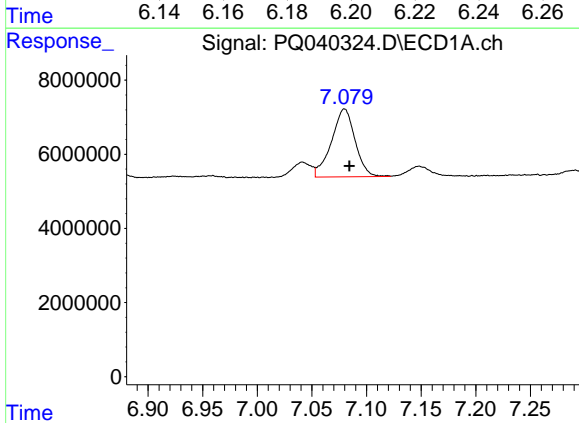
R.T.: 6.727 min  
 Delta R.T.: -0.016 min  
 Response: 26608386  
 Conc: 671.12 ng/ml

Instrument :  
 ECD\_Q  
 ClientSampled :  
 BFH93



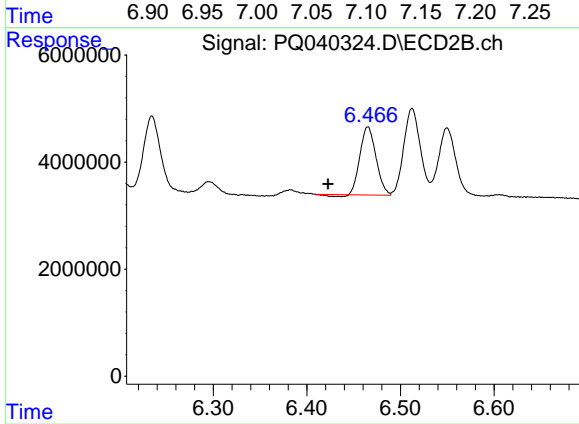
#12 AR-1232-2

R.T.: 6.197 min  
 Delta R.T.: -0.012 min  
 Response: 3595269  
 Conc: 59.93 ng/ml



#13 AR-1232-3

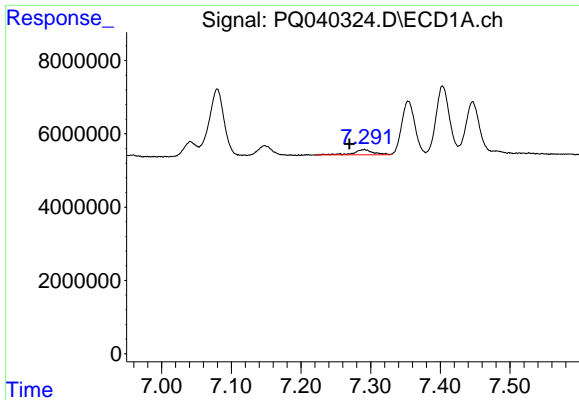
R.T.: 7.080 min  
 Delta R.T.: -0.005 min  
 Response: 27611250  
 Conc: 341.67 ng/ml



#13 AR-1232-3

R.T.: 6.465 min  
 Delta R.T.: 0.042 min  
 Response: 14941210  
 Conc: 424.85 ng/ml

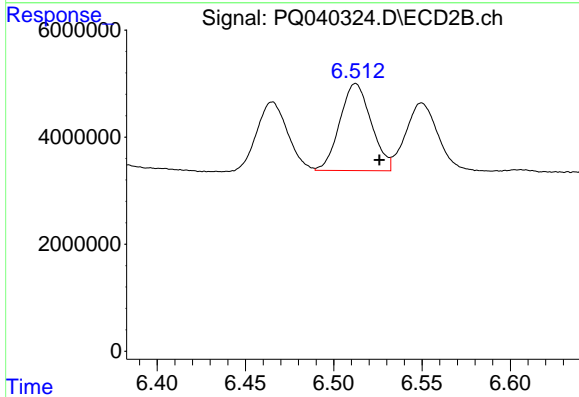




#14 AR-1232-4

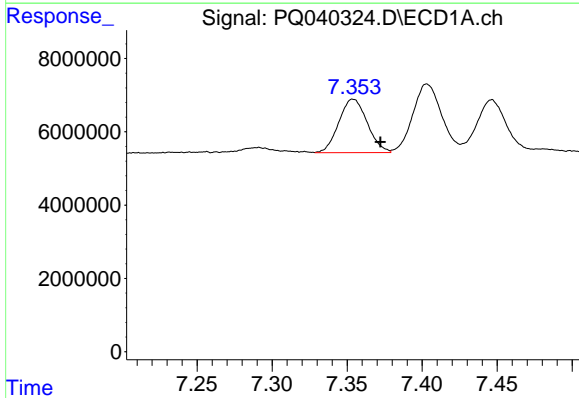
R.T.: 7.290 min  
 Delta R.T.: 0.021 min  
 Response: 2764581  
 Conc: 66.14 ng/ml

Instrument :  
 ECD\_Q  
 ClientSampled :  
 BFH93



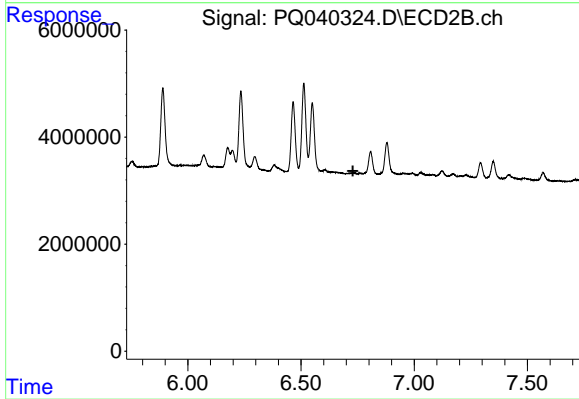
#14 AR-1232-4

R.T.: 6.512 min  
 Delta R.T.: -0.013 min  
 Response: 20095361  
 Conc: 680.09 ng/ml



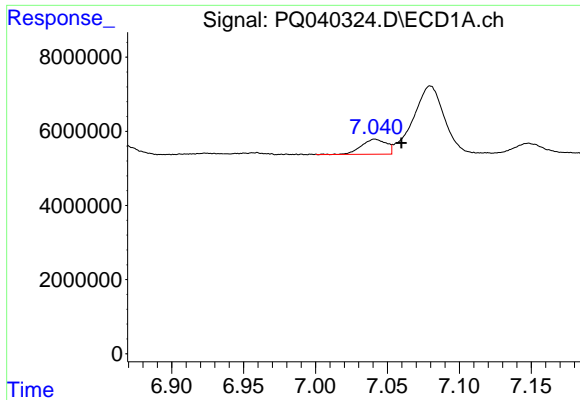
#15 AR-1232-5

R.T.: 7.354 min  
 Delta R.T.: -0.018 min  
 Response: 19211440  
 Conc: 606.18 ng/ml



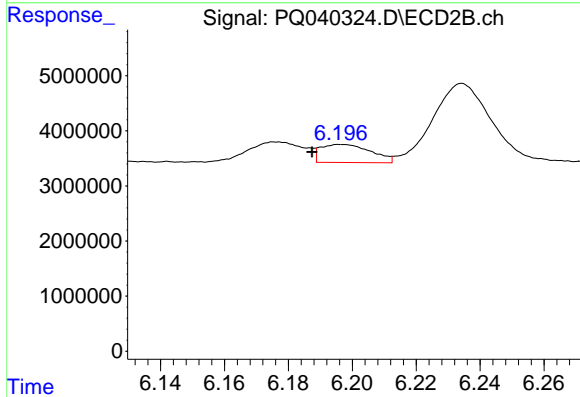
#15 AR-1232-5

R.T.: 6.720 min  
 Delta R.T.: -0.009 min  
 Response: -90882  
 Conc: N.D.

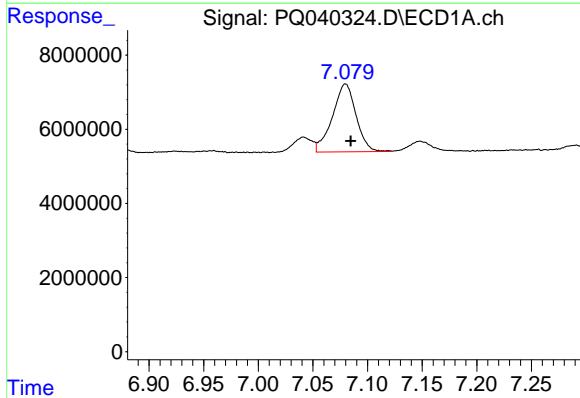


#16 AR-1242-1  
 R.T.: 7.042 min  
 Delta R.T.: -0.018 min  
 Response: 4921195  
 Conc: 50.76 ng/ml

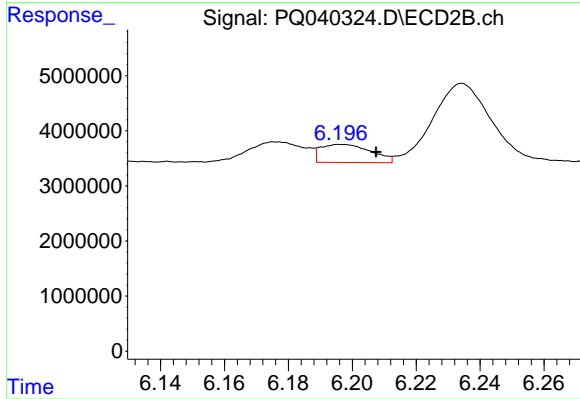
**Instrument :**  
 ECD\_Q  
**ClientSampled :**  
 BFH93



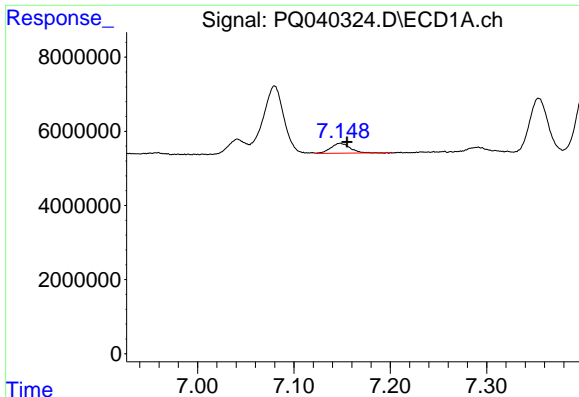
#16 AR-1242-1  
 R.T.: 6.197 min  
 Delta R.T.: 0.009 min  
 Response: 3595269  
 Conc: 48.62 ng/ml



#17 AR-1242-2  
 R.T.: 7.080 min  
 Delta R.T.: -0.005 min  
 Response: 27611250  
 Conc: 191.06 ng/ml



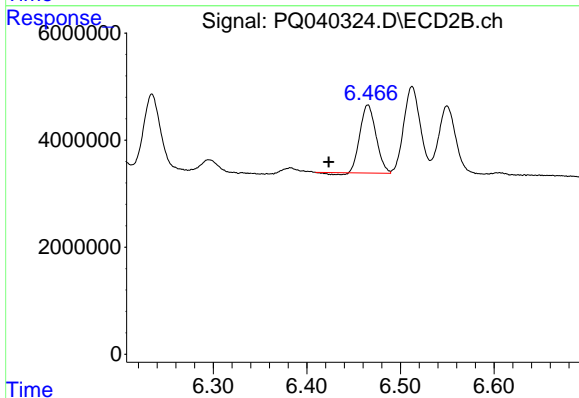
#17 AR-1242-2  
 R.T.: 6.197 min  
 Delta R.T.: -0.011 min  
 Response: 3595269  
 Conc: 33.77 ng/ml



#18 AR-1242-3

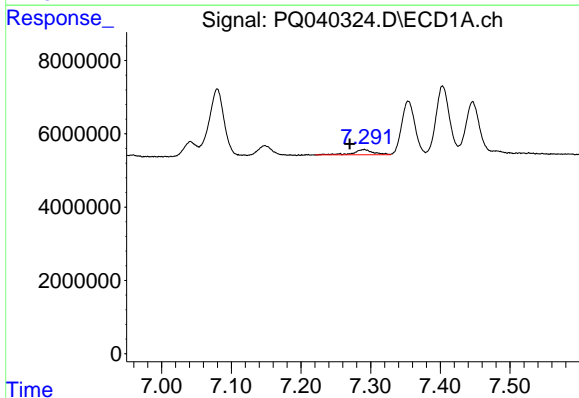
R.T.: 7.148 min  
 Delta R.T.: -0.007 min  
 Response: 3695689  
 Conc: 39.70 ng/ml

Instrument :  
 ECD\_Q  
 ClientSampled :  
 BFH93



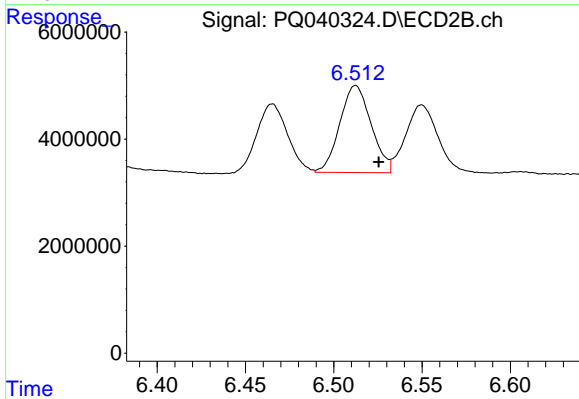
#18 AR-1242-3

R.T.: 6.465 min  
 Delta R.T.: 0.042 min  
 Response: 14941210  
 Conc: 247.68 ng/ml



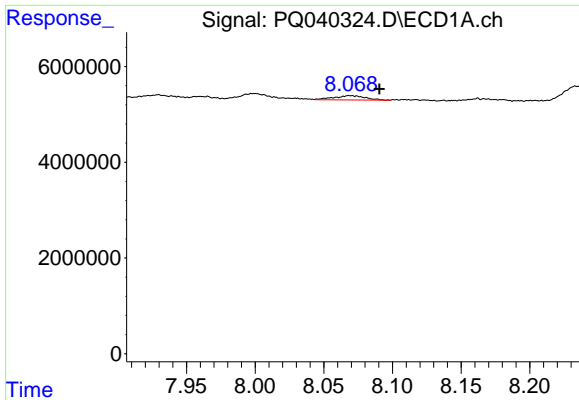
#19 AR-1242-4

R.T.: 7.290 min  
 Delta R.T.: 0.021 min  
 Response: 2764581  
 Conc: 36.76 ng/ml



#19 AR-1242-4

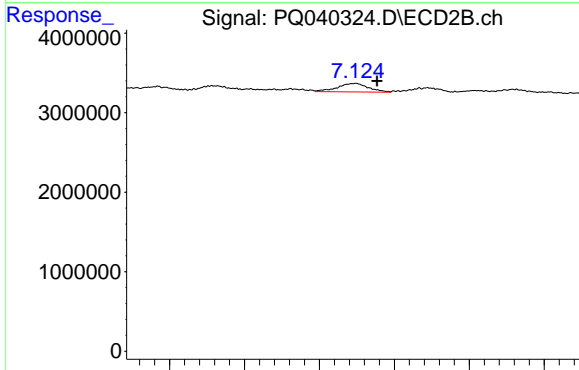
R.T.: 6.512 min  
 Delta R.T.: -0.013 min  
 Response: 20095361  
 Conc: 337.17 ng/ml



#20 AR-1242-5

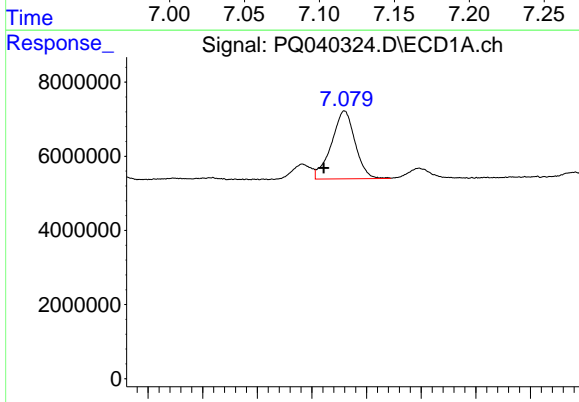
R.T.: 8.070 min  
 Delta R.T.: -0.021 min  
 Response: 1447094  
 Conc: 16.69 ng/ml

Instrument :  
 ECD\_Q  
 ClientSampled :  
 BFH93



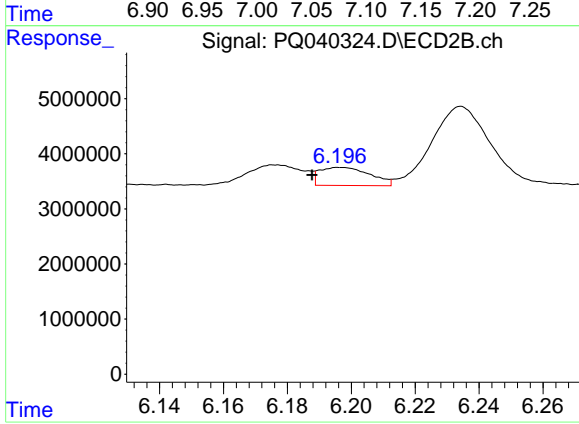
#20 AR-1242-5

R.T.: 7.123 min  
 Delta R.T.: -0.015 min  
 Response: 1548277  
 Conc: 19.21 ng/ml



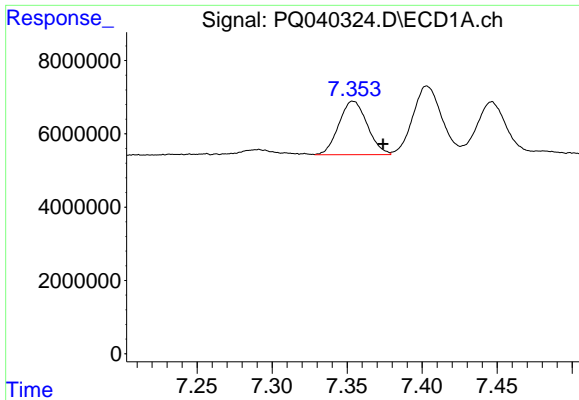
#21 AR-1248-1

R.T.: 7.080 min  
 Delta R.T.: 0.019 min  
 Response: 27611250  
 Conc: 356.72 ng/ml



#21 AR-1248-1

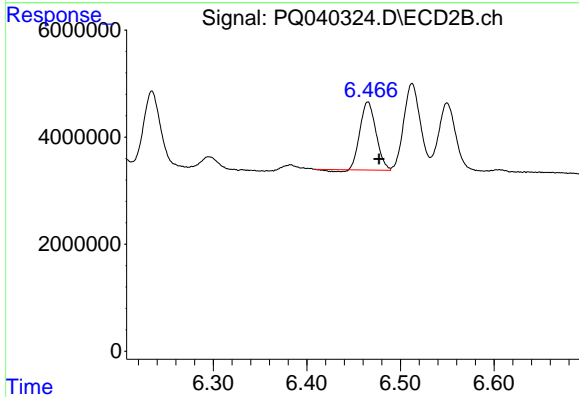
R.T.: 6.197 min  
 Delta R.T.: 0.009 min  
 Response: 3595269  
 Conc: 62.39 ng/ml



#22 AR-1248-2

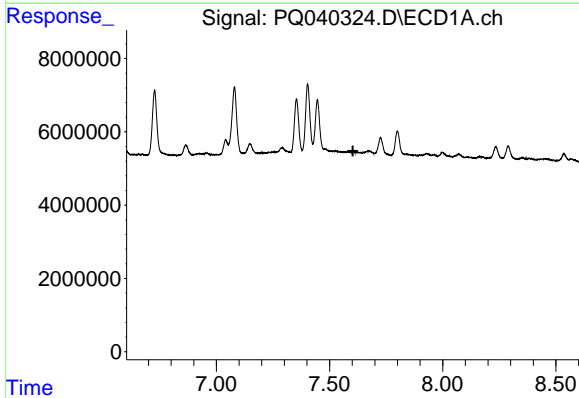
R.T.: 7.354 min  
 Delta R.T.: -0.020 min  
 Response: 19211440  
 Conc: 170.57 ng/ml

Instrument :  
 ECD\_Q  
 ClientSampled :  
 BFH93



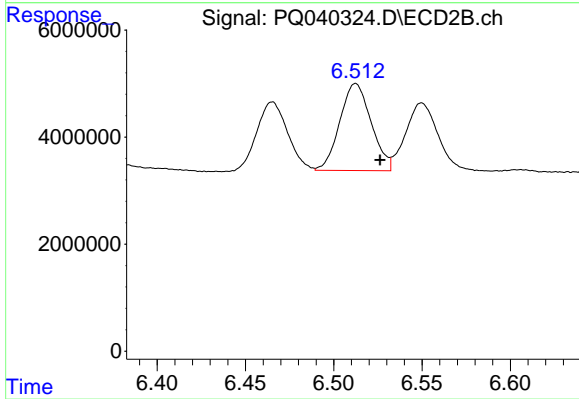
#22 AR-1248-2

R.T.: 6.465 min  
 Delta R.T.: -0.012 min  
 Response: 14941210  
 Conc: 169.94 ng/ml



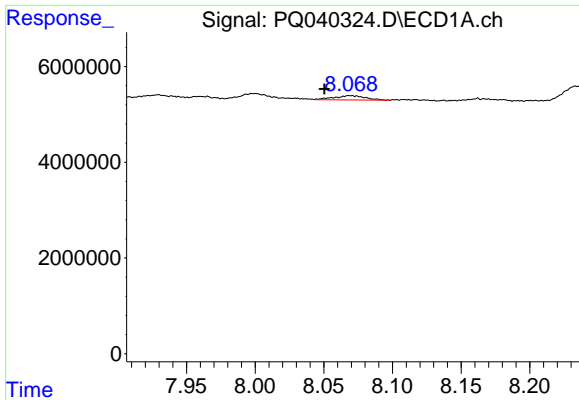
#23 AR-1248-3

R.T.: 0.000 min  
 Exp R.T. : 7.603 min  
 Response: 0  
 Conc: N.D.



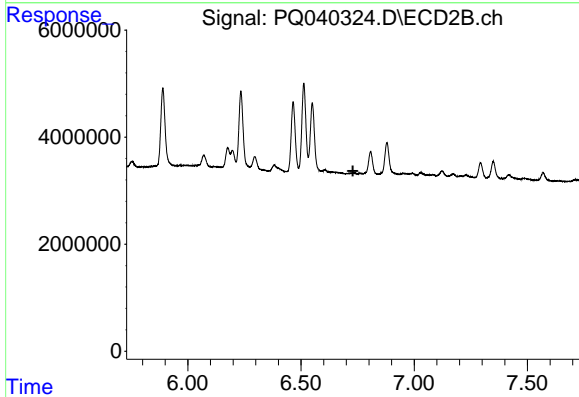
#23 AR-1248-3

R.T.: 6.512 min  
 Delta R.T.: -0.014 min  
 Response: 20095361  
 Conc: 222.09 ng/ml

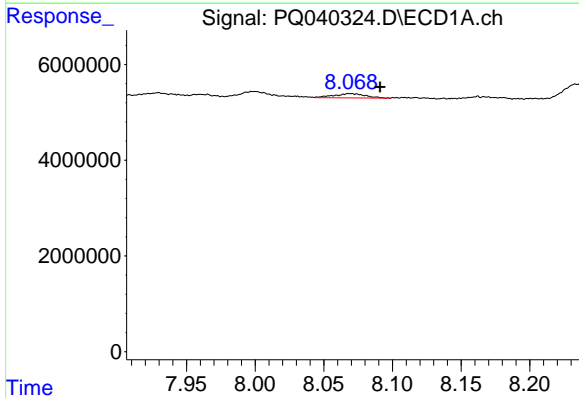


#24 AR-1248-4  
 R.T.: 8.070 min  
 Delta R.T.: 0.019 min  
 Response: 1447094  
 Conc: 9.59 ng/ml

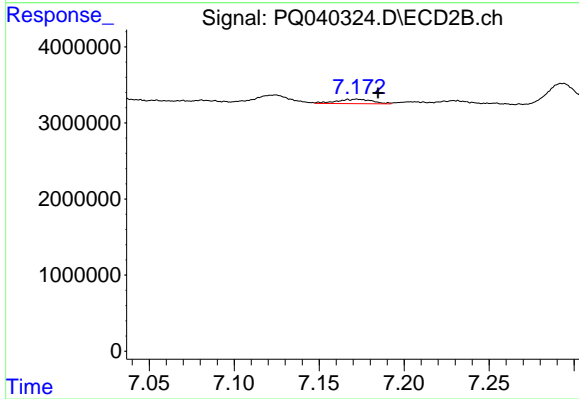
Instrument :  
 ECD\_Q  
 ClientSampled :  
 BFH93



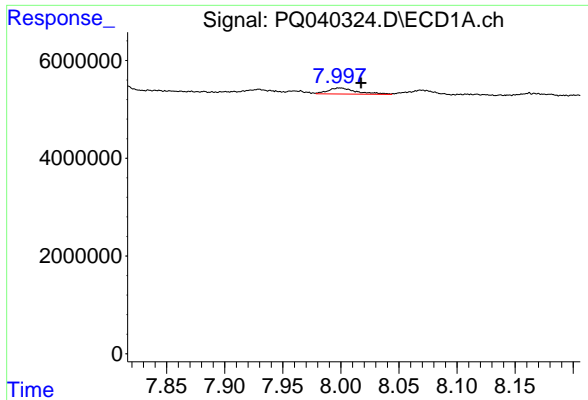
#24 AR-1248-4  
 R.T.: 6.720 min  
 Delta R.T.: -0.009 min  
 Response: -90882  
 Conc: N.D.



#25 AR-1248-5  
 R.T.: 8.070 min  
 Delta R.T.: -0.021 min  
 Response: 1447094  
 Conc: 9.61 ng/ml



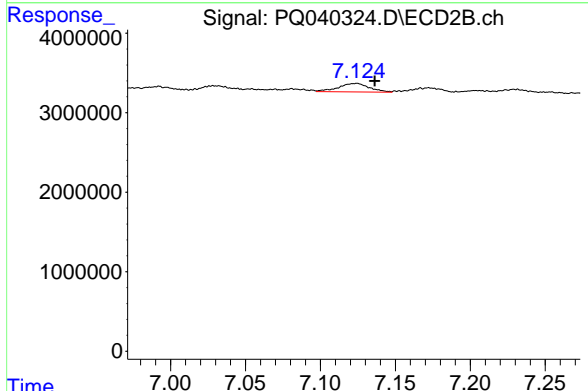
#25 AR-1248-5  
 R.T.: 7.172 min  
 Delta R.T.: -0.013 min  
 Response: 854943  
 Conc: 7.53 ng/ml



#26 AR-1254-1

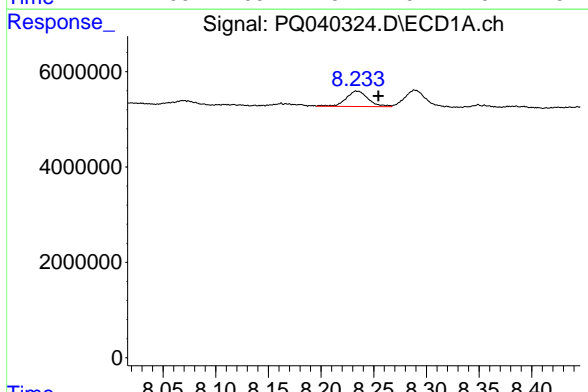
R.T.: 7.999 min  
 Delta R.T.: -0.018 min  
 Response: 2111994  
 Conc: 12.11 ng/ml

Instrument :  
 ECD\_Q  
 ClientSampleId :  
 BFH93



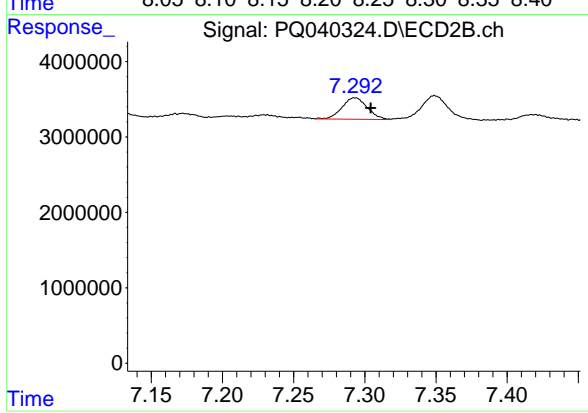
#26 AR-1254-1

R.T.: 7.123 min  
 Delta R.T.: -0.013 min  
 Response: 1548277  
 Conc: 8.08 ng/ml



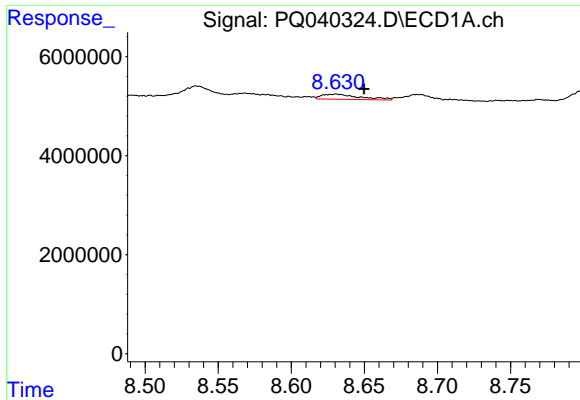
#27 AR-1254-2

R.T.: 8.234 min  
 Delta R.T.: -0.020 min  
 Response: 4726933  
 Conc: 17.09 ng/ml



#27 AR-1254-2

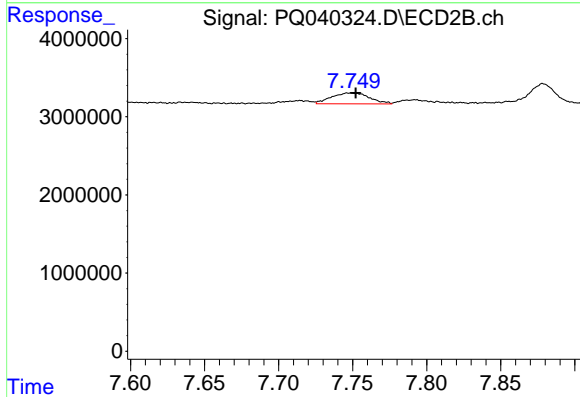
R.T.: 7.293 min  
 Delta R.T.: -0.011 min  
 Response: 3524319  
 Conc: 20.29 ng/ml



#28 AR-1254-3

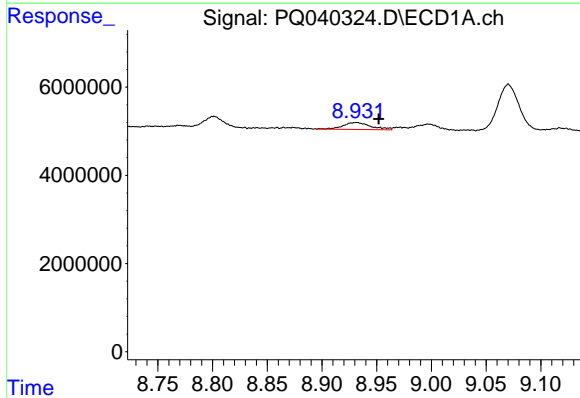
R.T.: 8.630 min  
 Delta R.T.: -0.020 min  
 Response: 1874534  
 Conc: 6.32 ng/ml

Instrument :  
 ECD\_Q  
 ClientSampleId :  
 BFH93



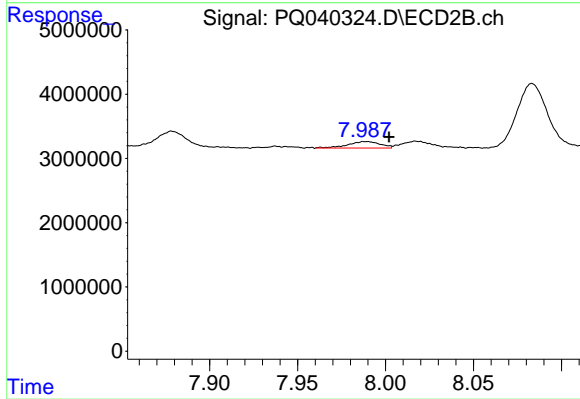
#28 AR-1254-3

R.T.: 7.749 min  
 Delta R.T.: -0.003 min  
 Response: 2504450  
 Conc: 8.67 ng/ml



#29 AR-1254-4

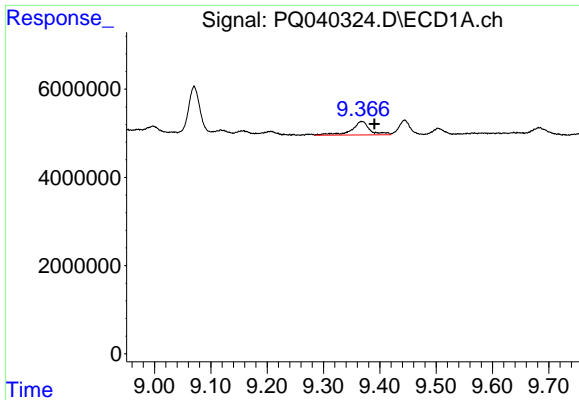
R.T.: 8.931 min  
 Delta R.T.: -0.021 min  
 Response: 2787368  
 Conc: 13.41 ng/ml



#29 AR-1254-4

R.T.: 7.989 min  
 Delta R.T.: -0.013 min  
 Response: 1300577  
 Conc: 7.28 ng/ml

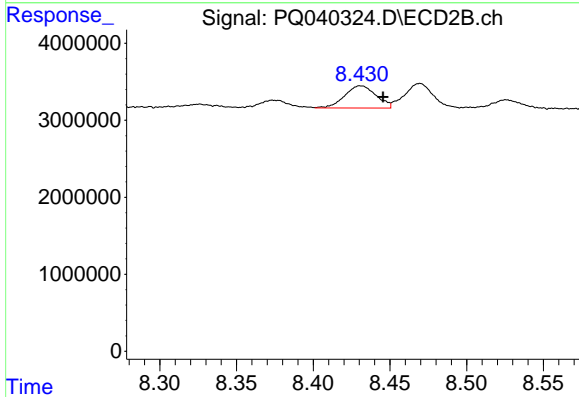




#30 AR-1254-5

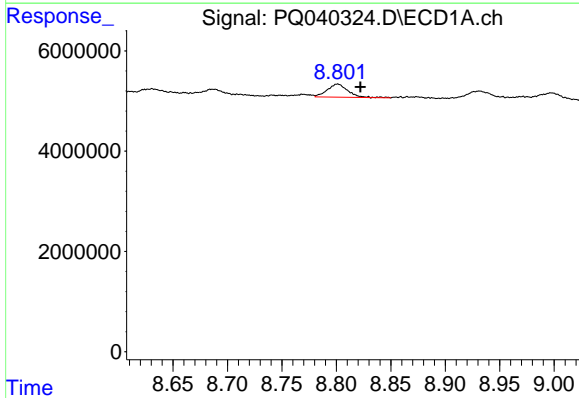
R.T.: 9.368 min  
 Delta R.T.: -0.022 min  
 Response: 6829739  
 Conc: 23.71 ng/ml

Instrument :  
 ECD\_Q  
 ClientSampled :  
 BFH93



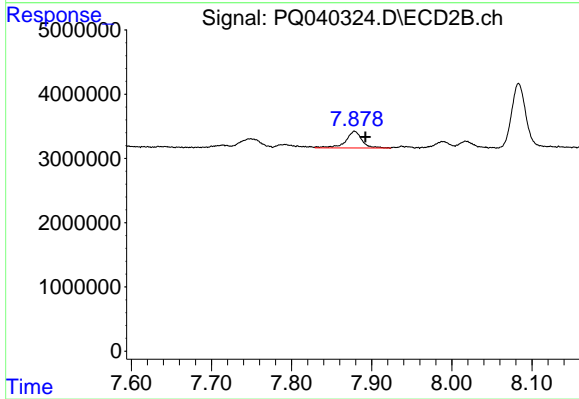
#30 AR-1254-5

R.T.: 8.431 min  
 Delta R.T.: -0.014 min  
 Response: 4121594  
 Conc: 16.00 ng/ml



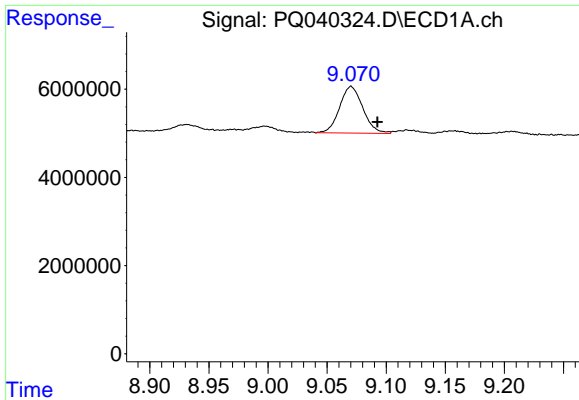
#31 AR-1260-1

R.T.: 8.801 min  
 Delta R.T.: -0.021 min  
 Response: 3480304  
 Conc: 10.47 ng/ml



#31 AR-1260-1

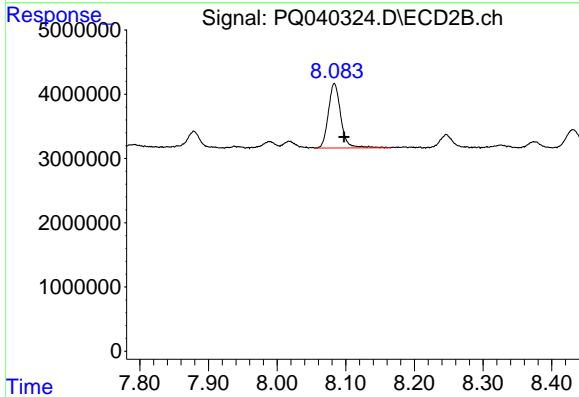
R.T.: 7.879 min  
 Delta R.T.: -0.014 min  
 Response: 3701287  
 Conc: 13.50 ng/ml



#32 AR-1260-2

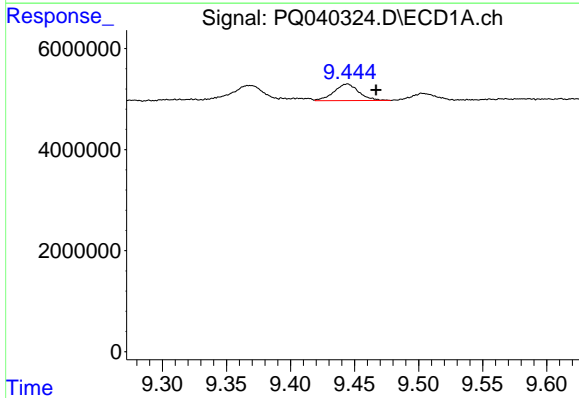
R.T.: 9.070 min  
 Delta R.T.: -0.022 min  
 Response: 14514148  
 Conc: 35.93 ng/ml

Instrument :  
 ECD\_Q  
 ClientSampleId :  
 BFH93



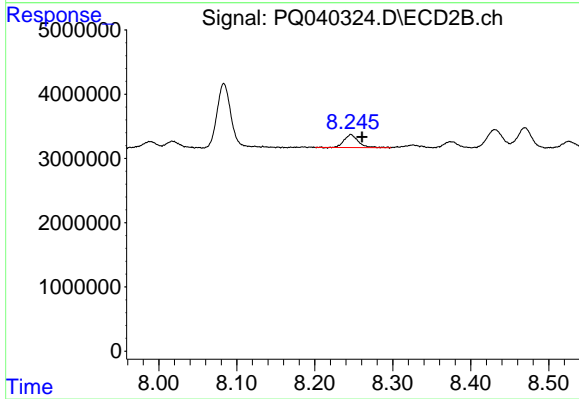
#32 AR-1260-2

R.T.: 8.083 min  
 Delta R.T.: -0.014 min  
 Response: 12640326  
 Conc: 36.54 ng/ml



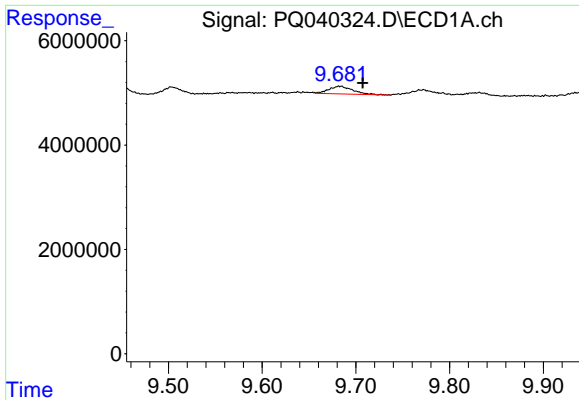
#33 AR-1260-3

R.T.: 9.444 min  
 Delta R.T.: -0.023 min  
 Response: 4422887  
 Conc: 13.41 ng/ml



#33 AR-1260-3

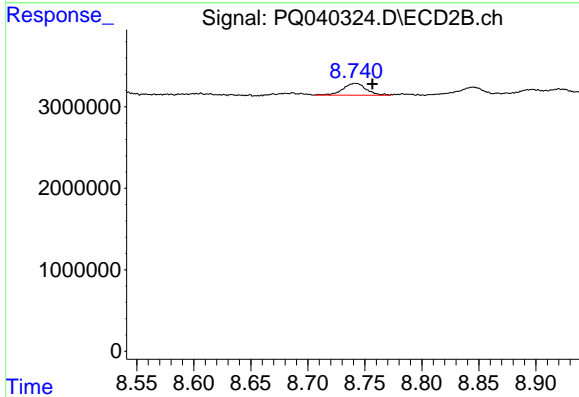
R.T.: 8.246 min  
 Delta R.T.: -0.014 min  
 Response: 2580687  
 Conc: 8.05 ng/ml



#34 AR-1260-4

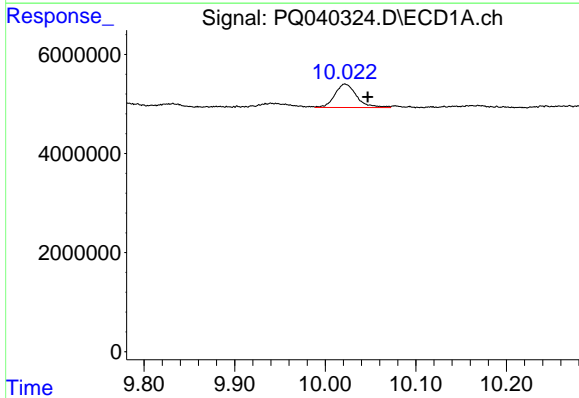
R.T.: 9.683 min  
 Delta R.T.: -0.025 min  
 Response: 2635732  
 Conc: 7.15 ng/ml

Instrument :  
 ECD\_Q  
 ClientSampled :  
 BFH93



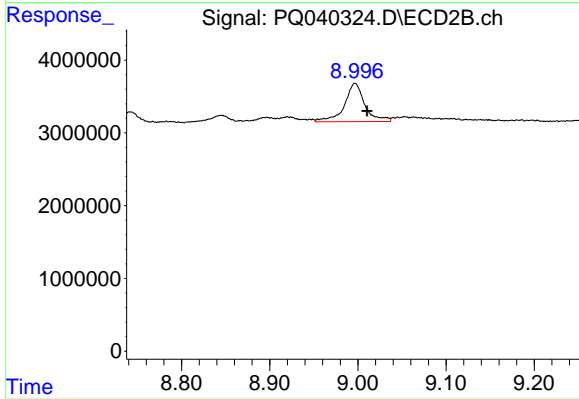
#34 AR-1260-4

R.T.: 8.742 min  
 Delta R.T.: -0.015 min  
 Response: 2049821  
 Conc: 7.54 ng/ml



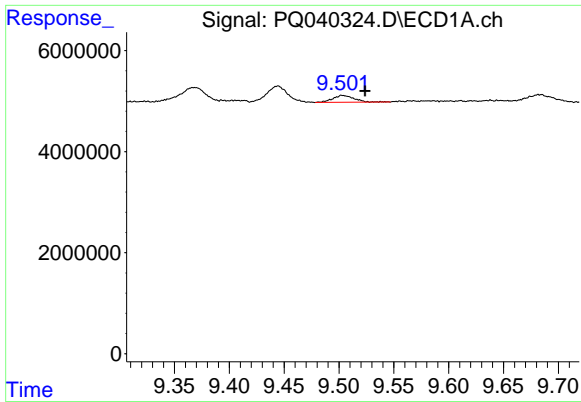
#35 AR-1260-5

R.T.: 10.022 min  
 Delta R.T.: -0.025 min  
 Response: 7873411  
 Conc: 10.22 ng/ml



#35 AR-1260-5

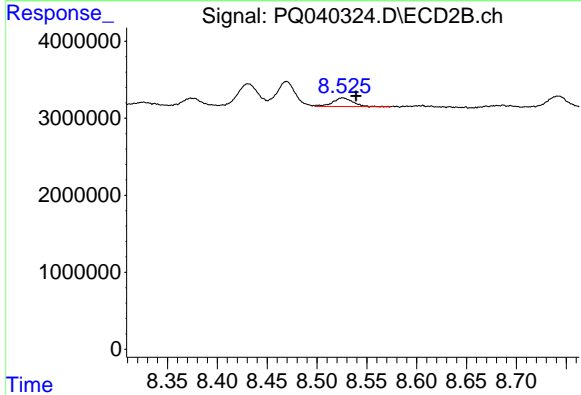
R.T.: 8.997 min  
 Delta R.T.: -0.014 min  
 Response: 8485502  
 Conc: 12.62 ng/ml



#36 AR-1262-1

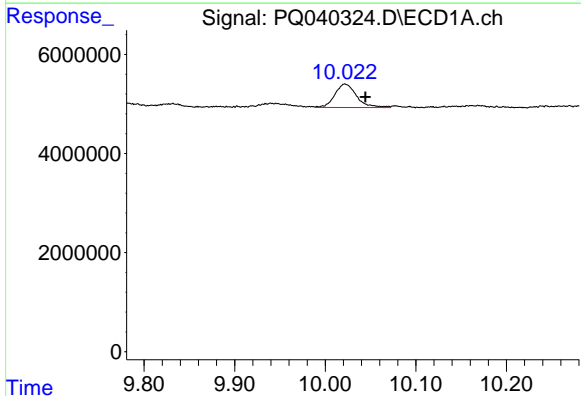
R.T.: 9.504 min  
 Delta R.T.: -0.020 min  
 Response: 1849278  
 Conc: 13.30 ng/ml

Instrument :  
 ECD\_Q  
 ClientSampleId :  
 BFH93



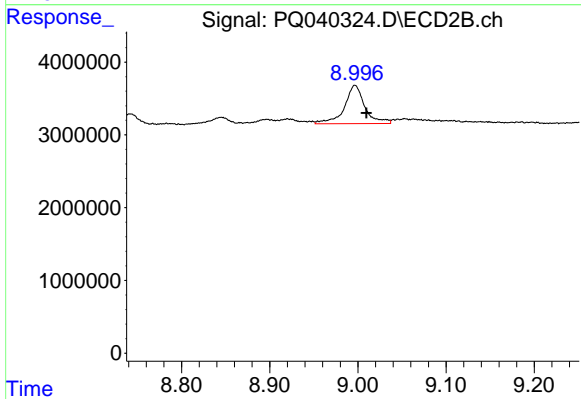
#36 AR-1262-1

R.T.: 8.526 min  
 Delta R.T.: -0.013 min  
 Response: 1554120  
 Conc: 13.69 ng/ml



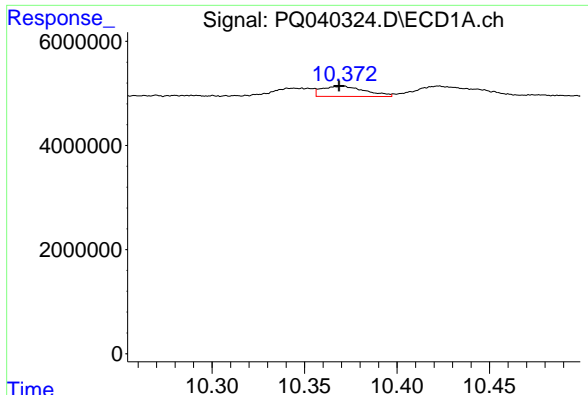
#37 AR-1262-2

R.T.: 10.022 min  
 Delta R.T.: -0.022 min  
 Response: 7873411  
 Conc: 13.60 ng/ml



#37 AR-1262-2

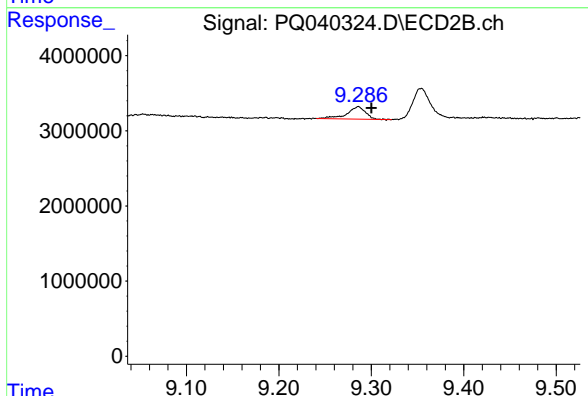
R.T.: 8.997 min  
 Delta R.T.: -0.013 min  
 Response: 8485502  
 Conc: 17.10 ng/ml



#38 AR-1262-3

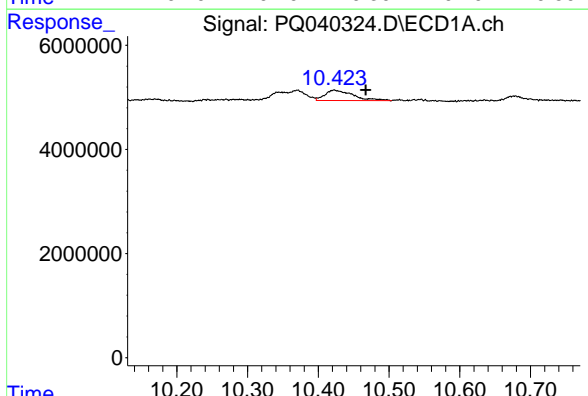
R.T.: 10.370 min  
 Delta R.T.: 0.001 min  
 Response: 3175909  
 Conc: 7.51 ng/ml

Instrument :  
 ECD\_Q  
 ClientSampled :  
 BFH93



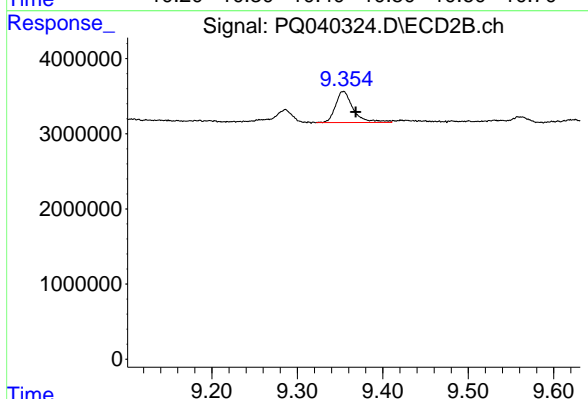
#38 AR-1262-3

R.T.: 9.286 min  
 Delta R.T.: -0.015 min  
 Response: 2304761  
 Conc: 10.96 ng/ml



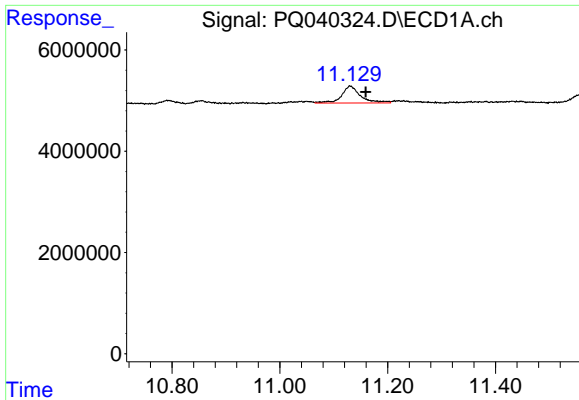
#39 AR-1262-4

R.T.: 10.423 min  
 Delta R.T.: -0.045 min  
 Response: 5522839  
 Conc: 14.62 ng/ml



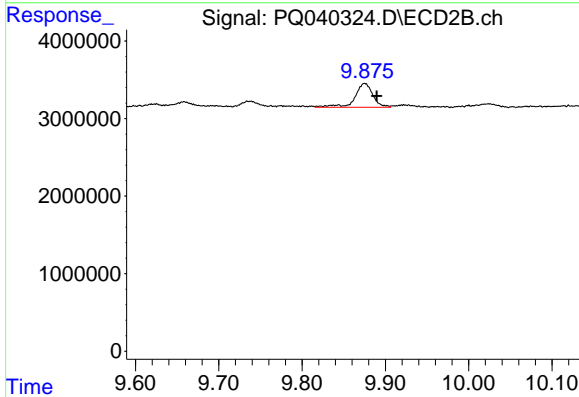
#39 AR-1262-4

R.T.: 9.354 min  
 Delta R.T.: -0.014 min  
 Response: 5975550  
 Conc: 15.78 ng/ml

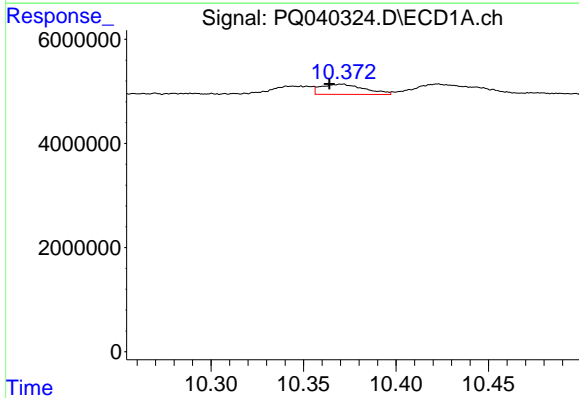


#40 AR-1262-5  
 R.T.: 11.131 min  
 Delta R.T.: -0.029 min  
 Response: 8132295  
 Conc: 34.61 ng/ml

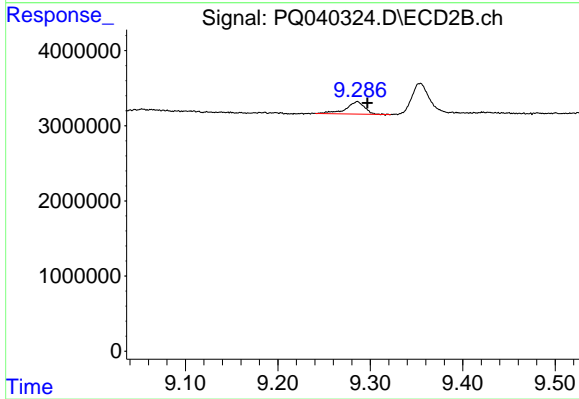
Instrument :  
 ECD\_Q  
 ClientSampleId :  
 BFH93



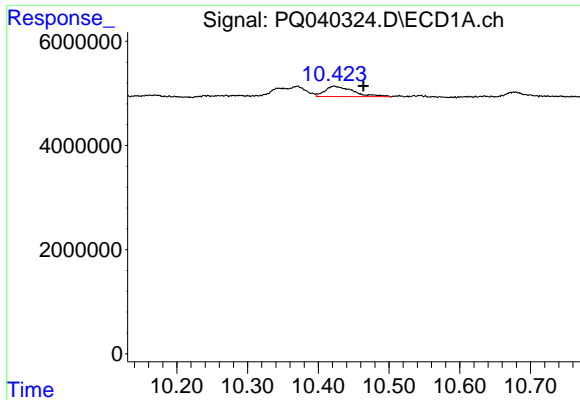
#40 AR-1262-5  
 R.T.: 9.875 min  
 Delta R.T.: -0.015 min  
 Response: 4624988  
 Conc: 28.53 ng/ml



#41 AR-1268-1  
 R.T.: 10.370 min  
 Delta R.T.: 0.006 min  
 Response: 3175909  
 Conc: 5.27 ng/ml



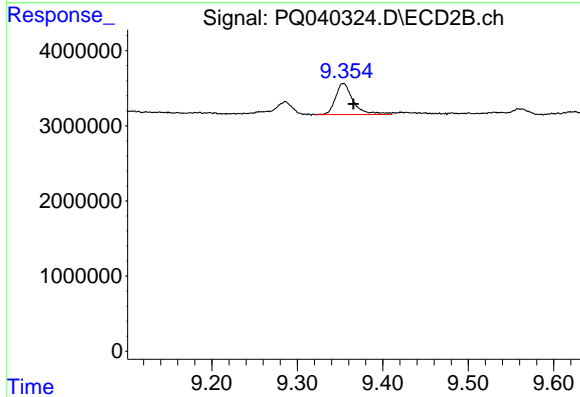
#41 AR-1268-1  
 R.T.: 9.286 min  
 Delta R.T.: -0.011 min  
 Response: 2304761  
 Conc: 5.05 ng/ml



#42 AR-1268-2

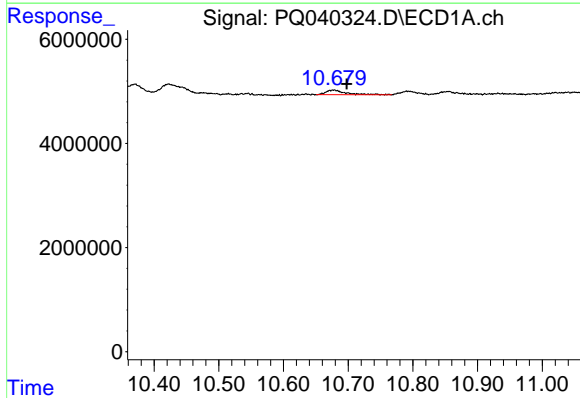
R.T.: 10.423 min  
 Delta R.T.: -0.041 min  
 Response: 5522839  
 Conc: 8.98 ng/ml

Instrument :  
 ECD\_Q  
 ClientSampleId :  
 BFH93



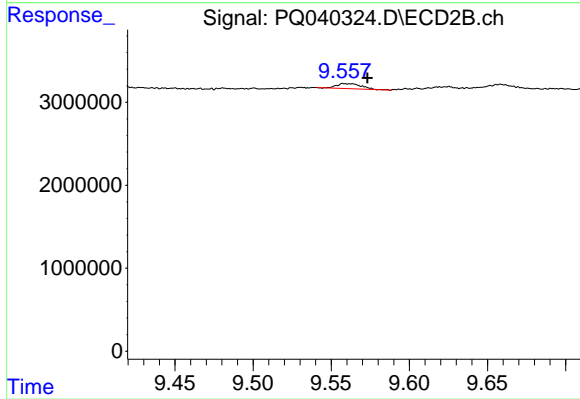
#42 AR-1268-2

R.T.: 9.354 min  
 Delta R.T.: -0.012 min  
 Response: 5975550  
 Conc: 13.67 ng/ml



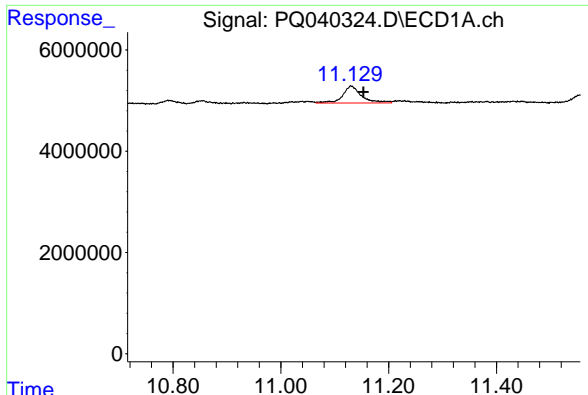
#43 AR-1268-3

R.T.: 10.678 min  
 Delta R.T.: -0.020 min  
 Response: 1884876  
 Conc: 3.47 ng/ml



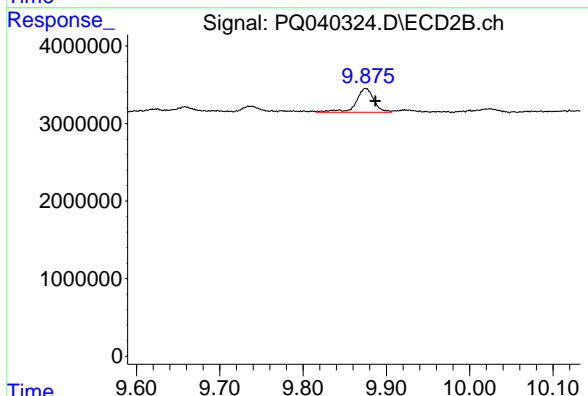
#43 AR-1268-3

R.T.: 9.561 min  
 Delta R.T.: -0.012 min  
 Response: 650070  
 Conc: 1.73 ng/ml

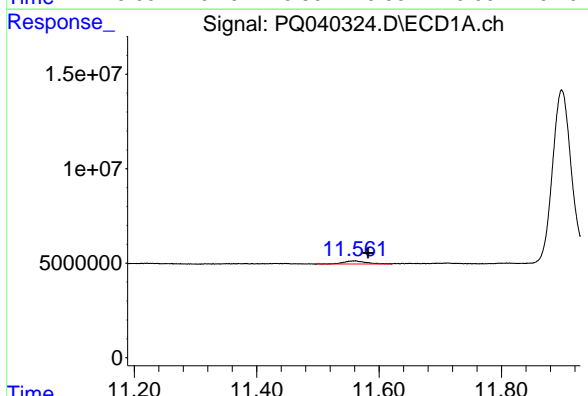


#44 AR-1268-4  
 R.T.: 11.131 min  
 Delta R.T.: -0.023 min  
 Response: 8132295  
 Conc: 39.87 ng/ml

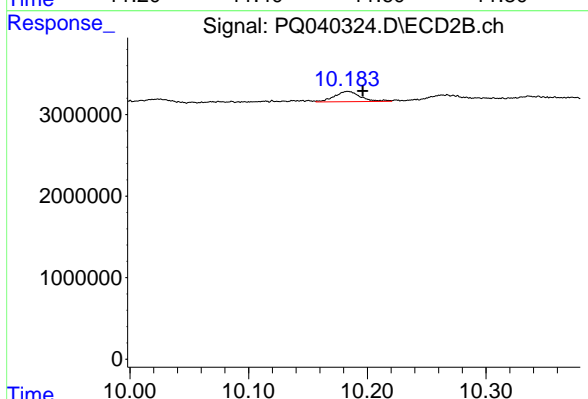
Instrument :  
 ECD\_Q  
 ClientSampleId :  
 BFH93



#44 AR-1268-4  
 R.T.: 9.875 min  
 Delta R.T.: -0.012 min  
 Response: 4624988  
 Conc: 33.57 ng/ml



#45 AR-1268-5  
 R.T.: 11.560 min  
 Delta R.T.: -0.022 min  
 Response: 4325253  
 Conc: 2.34 ng/ml



#45 AR-1268-5  
 R.T.: 10.184 min  
 Delta R.T.: -0.013 min  
 Response: 1939456  
 Conc: 1.64 ng/ml