

Data Path : Z:\pestpcbsrv\HPCHEM1\ECD_Q\Data\PQ053022\
 Data File : PQ057841.D
 Signal(s) : Signal #1: ECD1A.ch Signal #2: ECD2B.ch
 Acq On : 28 May 2022 19:06
 Operator : YP\AJ
 Sample : N3068-01
 Misc :
 ALS Vial : 28 Sample Multiplier: 1

Instrument :
 ECD_Q
 ClientSampleId :

Integration File signal 1: autoint1.e
 Integration File signal 2: autoint2.e
 Quant Time: May 30 03:53:00 2022
 Quant Method : Z:\pestpcbsrv\HPCHEM1\ECD_Q\Method\PQ052822.M
 Quant Title : GC EXTRACTABLES
 QLast Update : Sat May 28 06:33:00 2022
 Response via : Initial Calibration
 Integrator: ChemStation

Volume Inj. : 2 µl
 Signal #1 Phase : ZB-MR1 Signal #2 Phase: ZB-MR2
 Signal #1 Info : 30Mx0.32mmx 0.50µ Signal #2 Info : 30M x 0.32mm x 0.25µm

Compound	RT#1	RT#2	Resp#1	Resp#2	ng/ml	ng/ml
System Monitoring Compounds						
2) SA Decachlor...	10.617	0.000	146.7E6	0	11.698	N.D. #
Target Compounds						
3) L1 AR-1016-1	5.888	5.179f	232.2E6	282.1E6	602.813	742.154
4) L1 AR-1016-2	5.888	5.179	232.2E6	282.1E6	351.666	515.784 #
5) L1 AR-1016-3	5.964	5.361	275.4E6	272.7E6	659.189	987.322 #
6) L1 AR-1016-4	6.083f	5.410	1161.8E6	77844064	3233.385	361.327 #
7) L1 AR-1016-5	6.370f	5.618	832.3E6	855.8E6	2908.795	3028.321
8) L2 AR-1221-1	4.884f	4.291f	6081060	709.6E6	39.129	5945.847 #
9) L2 AR-1221-2	4.996	4.335f	4034.5E6	959.4E6	31225.084	10661.926 #
10) L2 AR-1221-3	5.050f	4.425	138.5E6	726.4E6	356.466	2468.100 #
11) L3 AR-1232-1	5.050f	4.425	138.5E6	726.4E6	403.600	2785.926 #
12) L3 AR-1232-2	5.605	5.179	643.3E6	282.1E6	4091.439	1097.512 #
13) L3 AR-1232-3	5.888	5.361	232.2E6	272.7E6	737.350	2147.241 #
14) L3 AR-1232-4	6.083f	5.450	1161.8E6	725.8E6	6806.128	6631.127
15) L3 AR-1232-5	6.169f	5.618	203.4E6	855.8E6	2052.840	6851.413 #
16) L4 AR-1242-1	5.888	5.179f	232.2E6	282.1E6	778.037	957.989
17) L4 AR-1242-2	5.888	5.179	232.2E6	282.1E6	452.815	666.768 #
18) L4 AR-1242-3	5.964	5.361	275.4E6	272.7E6	845.849	1264.544 #
19) L4 AR-1242-4	6.083f	5.450	1161.8E6	725.8E6	4202.221	3552.497
20) L4 AR-1242-5	6.812	5.971	13375.0E6	211.1E6	54075.864	790.667 #
21) L5 AR-1248-1	5.888	5.179f	232.2E6	282.1E6	1058.238	1308.272
22) L5 AR-1248-2	6.169f	5.410	203.4E6	77844064	603.647	264.854 #
23) L5 AR-1248-3	6.370f	5.450	832.3E6	725.8E6	2291.721	2382.866
24) L5 AR-1248-4	0.000	5.618	0	855.8E6	N.D.	2026.806 #
25) L5 AR-1248-5	6.812	6.011	13375.0E6	121.7E6	32251.509	321.425 #
26) L6 AR-1254-1	0.000	5.971	0	211.1E6	N.D.	357.759 #
27) L6 AR-1254-2	6.953	6.112	397.2E6	267.9E6	658.267	536.853
28) L6 AR-1254-3	0.000	6.527	0	45204139	N.D.	53.177 #
29) L6 AR-1254-4	0.000	6.757	0	778.9E6	N.D.	1517.152 #
30) L6 AR-1254-5	8.045f	7.170	488.4E6	225.9E6	861.155	339.315 #
31) L7 AR-1260-1	7.481	6.660	51568724	26830282	117.902	51.641 #
32) L7 AR-1260-2	7.752	6.847	424.2E6	220.6E6	765.516	353.736 #
33) L7 AR-1260-3	8.045f	6.985f	488.4E6	264.2E6	725.040	405.546 #
34) L7 AR-1260-4	8.329	7.469	270.1E6	110.0E6	541.369	218.662 #
35) L7 AR-1260-5	8.681	7.728	866.4E6	124.5E6	777.678	101.372 #
36) L8 AR-1262-1	8.102	7.170	134.3E6	225.9E6	217.816	625.036 #
37) L8 AR-1262-2	8.681	7.728	866.4E6	124.5E6	659.146	87.309 #
38) L8 AR-1262-3	9.008	7.988	262.4E6	29328969	421.404	56.138 #
39) L8 AR-1262-4	9.131f	8.060	53320213	12767.8E6	102.761	12629.169 #
40) L8 AR-1262-5	9.794f	8.605	95606254	101.2E6	181.015	227.099 #
41) L9 AR-1268-1	9.008	7.988	262.4E6	29328969	163.837	18.292 #
42) L9 AR-1268-2	9.131f	8.060	53320213	12767.8E6	31.326	8435.729 #

Data Path : Z:\pestpcbsrv\HPCHEM1\ECD_Q\Data\PQ053022\
 Data File : PQ057841.D
 Signal(s) : Signal #1: ECD1A.ch Signal #2: ECD2B.ch
 Acq On : 28 May 2022 19:06
 Operator : YP\AJ
 Sample : N3068-01
 Misc :
 ALS Vial : 28 Sample Multiplier: 1

Instrument :
 ECD_Q
 ClientSampleId :

Integration File signal 1: autoint1.e
 Integration File signal 2: autoint2.e
 Quant Time: May 30 03:53:00 2022
 Quant Method : Z:\pestpcbsrv\HPCHEM1\ECD_Q\Method\PQ052822.M
 Quant Title : GC EXTRACTABLES
 QLast Update : Sat May 28 06:33:00 2022
 Response via : Initial Calibration
 Integrator: ChemStation

Volume Inj. : 2 µl
 Signal #1 Phase : ZB-MR1 Signal #2 Phase: ZB-MR2
 Signal #1 Info : 30Mx0.32mmx 0.50µ Signal #2 Info : 30M x 0.32mm x 0.25µm

	Compound	RT#1	RT#2	Resp#1	Resp#2	ng/ml	ng/ml	
43)	L9 AR-1268-3	9.331f	8.296	112.2E6	-29844958	75.511	N.D.	#
44)	L9 AR-1268-4	9.794f	8.605	95606254	101.2E6	161.119	203.271	#
45)	L9 AR-1268-5	0.000	8.920	0	38339841	N.D.	9.685	#

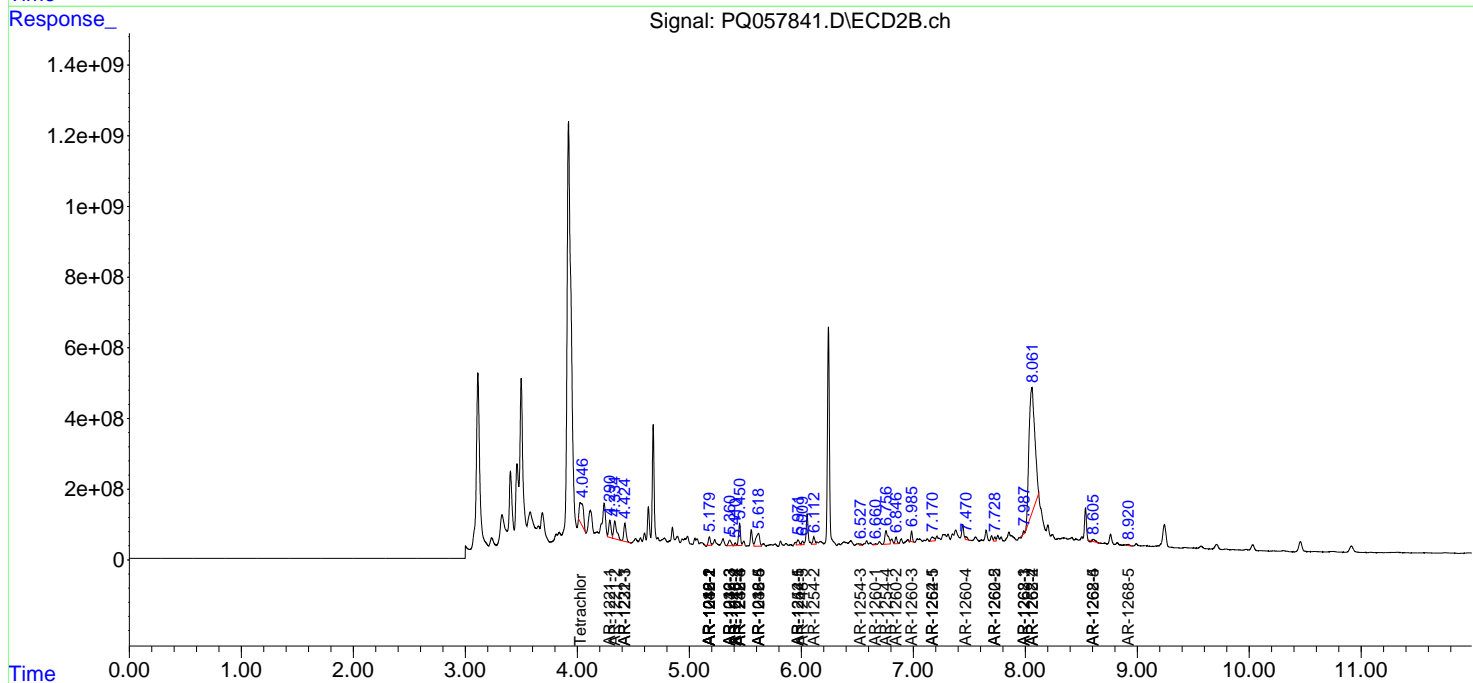
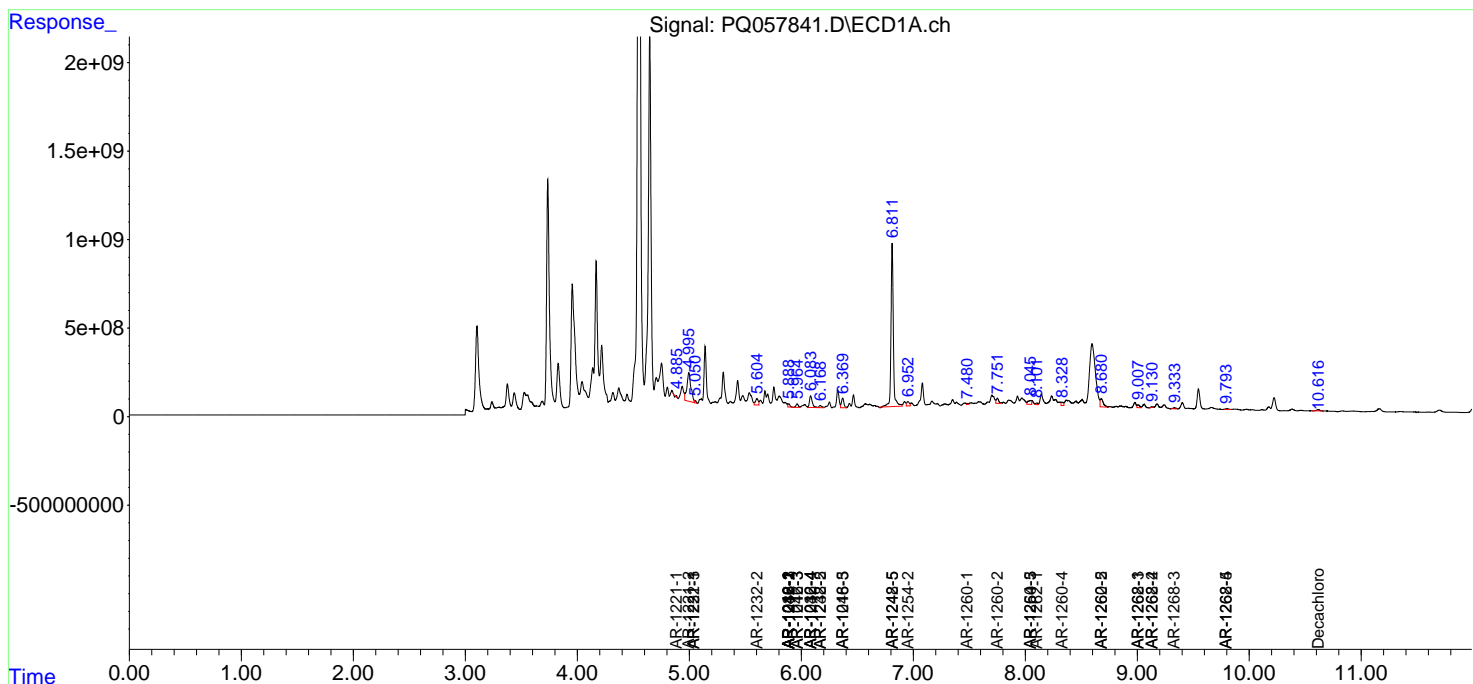
(f)=RT Delta > 1/2 Window (#)=Amounts differ by > 25% (m)=manual int.

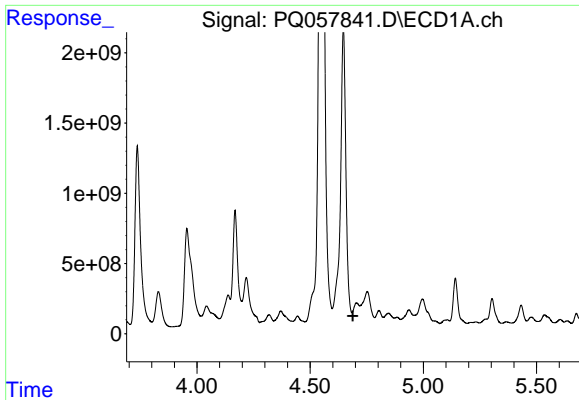
Data Path : Z:\pestpcbsrv\HPCHEM1\ECD_Q\Data\PQ053022\
 Data File : PQ057841.D
 Signal(s) : Signal #1: ECD1A.ch Signal #2: ECD2B.ch
 Acq On : 28 May 2022 19:06
 Operator : YP\AJ
 Sample : N3068-01
 Misc :
 ALS Vial : 28 Sample Multiplier: 1

Instrument :
 ECD_Q
 ClientSampleId :

Integration File signal 1: autoint1.e
 Integration File signal 2: autoint2.e
 Quant Time: May 30 03:53:00 2022
 Quant Method : Z:\pestpcbsrv\HPCHEM1\ECD_Q\Method\PQ052822.M
 Quant Title : GC EXTRACTABLES
 QLast Update : Sat May 28 06:33:00 2022
 Response via : Initial Calibration
 Integrator: ChemStation

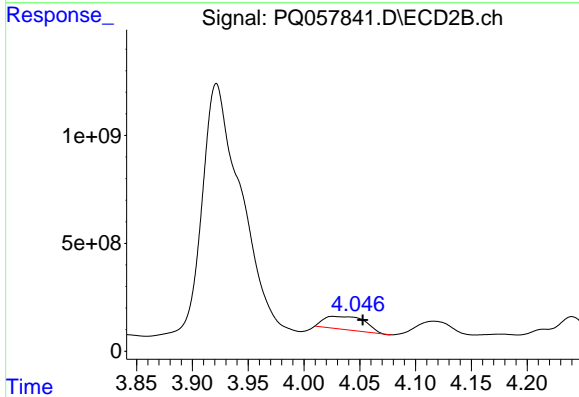
Volume Inj. : 2 µl
 Signal #1 Phase : ZB-MR1 Signal #2 Phase: ZB-MR2
 Signal #1 Info : 30Mx0.32mmx 0.50µ Signal #2 Info : 30M x 0.32mm x 0.25µm



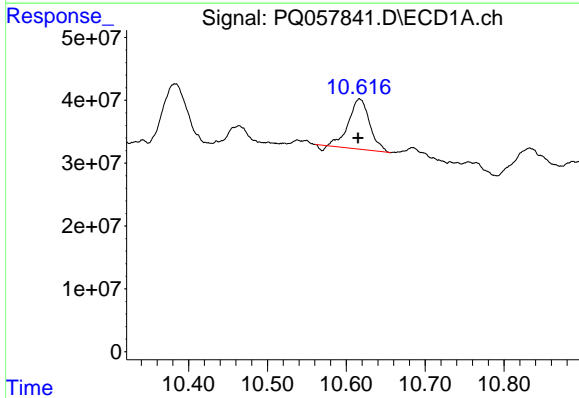


#1 Tetrachloro-m-xylene
 R.T.: 4.705 min
 Delta R.T.: 0.016 min
 Response: -2272244128
 Conc: N.D.

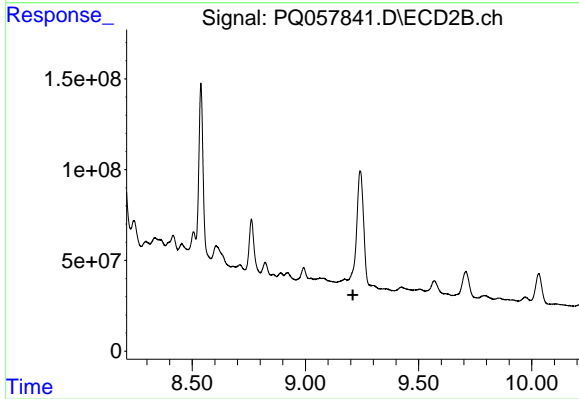
Instrument :
 ECD_Q
 ClientSampleId :



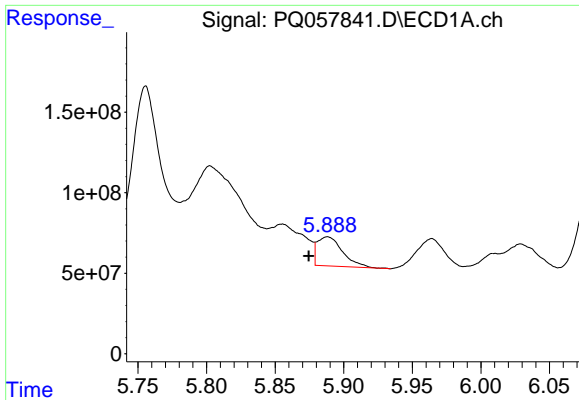
#1 Tetrachloro-m-xylene
 R.T.: 4.026 min
 Delta R.T.: -0.027 min
 Response: 1548879878
 Conc: 136.31 ng/ml



#2 Decachlorobiphenyl
 R.T.: 10.617 min
 Delta R.T.: 0.002 min
 Response: 146710994
 Conc: 11.70 ng/ml



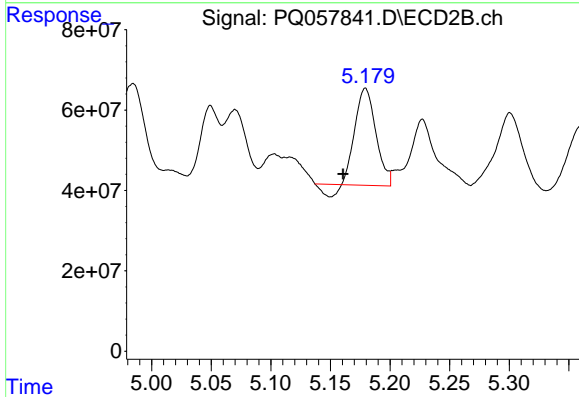
#2 Decachlorobiphenyl
 R.T.: 0.000 min
 Exp R.T.: 9.210 min
 Response: 0
 Conc: N.D.



#3 AR-1016-1

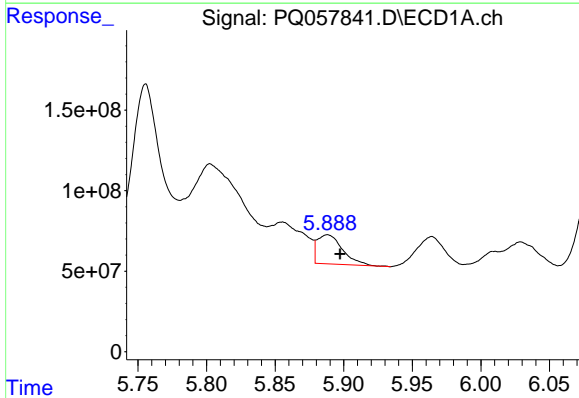
R.T.: 5.888 min
 Delta R.T.: 0.014 min
 Response: 232161661
 Conc: 602.81 ng/ml

Instrument :
 ECD_Q
 ClientSampleId :



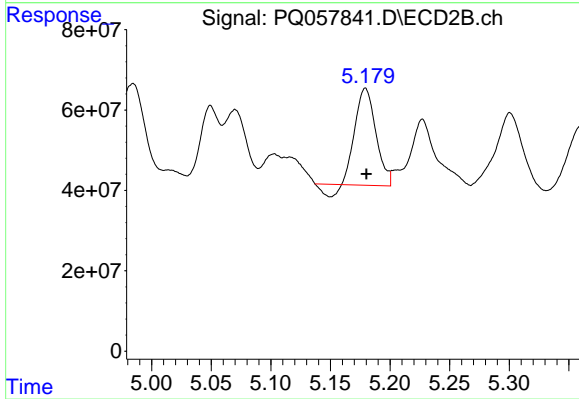
#3 AR-1016-1

R.T.: 5.179 min
 Delta R.T.: 0.019 min
 Response: 282052436
 Conc: 742.15 ng/ml



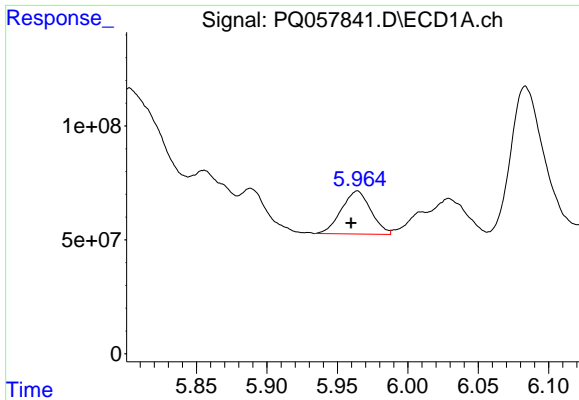
#4 AR-1016-2

R.T.: 5.888 min
 Delta R.T.: -0.009 min
 Response: 232161661
 Conc: 351.67 ng/ml



#4 AR-1016-2

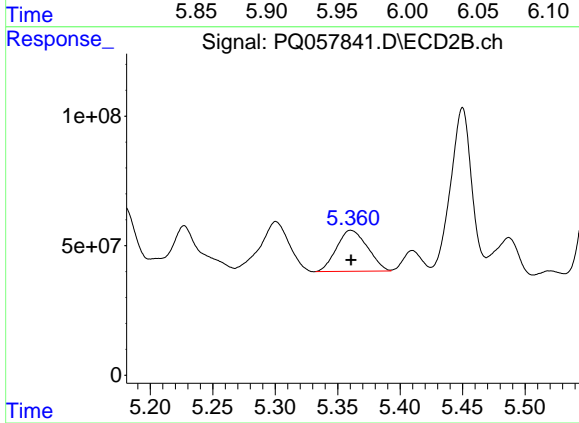
R.T.: 5.179 min
 Delta R.T.: 0.000 min
 Response: 282052436
 Conc: 515.78 ng/ml



#5 AR-1016-3

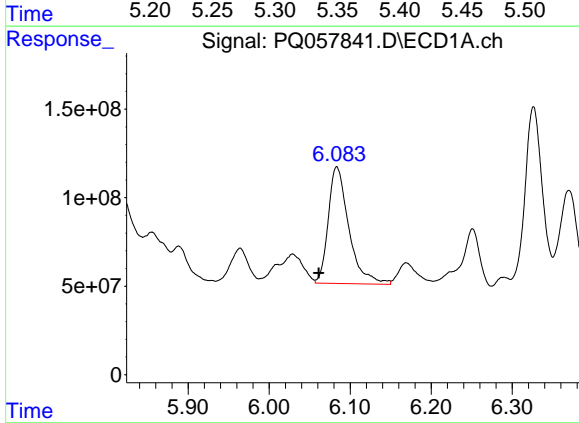
R.T.: 5.964 min
 Delta R.T.: 0.004 min
 Response: 275398385
 Conc: 659.19 ng/ml

Instrument :
 ECD_Q
 ClientSampleId :



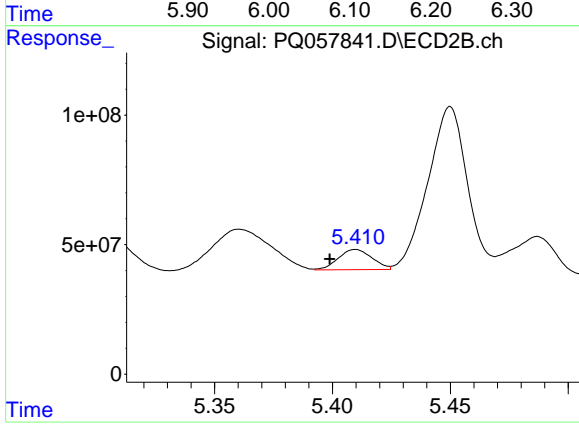
#5 AR-1016-3

R.T.: 5.361 min
 Delta R.T.: 0.000 min
 Response: 272659634
 Conc: 987.32 ng/ml



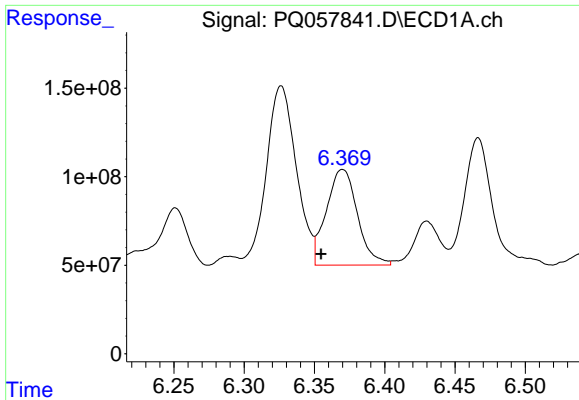
#6 AR-1016-4

R.T.: 6.083 min
 Delta R.T.: 0.022 min
 Response: 1161819988
 Conc: 3233.38 ng/ml



#6 AR-1016-4

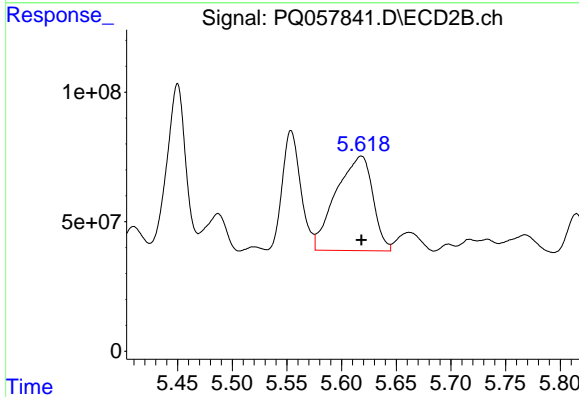
R.T.: 5.410 min
 Delta R.T.: 0.011 min
 Response: 77844064
 Conc: 361.33 ng/ml



#7 AR-1016-5

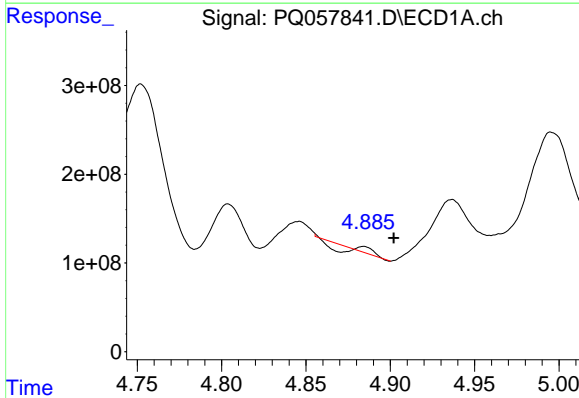
R.T.: 6.370 min
 Delta R.T.: 0.015 min
 Response: 832322876
 Conc: 2908.79 ng/ml

Instrument :
 ECD_Q
 ClientSampleId :



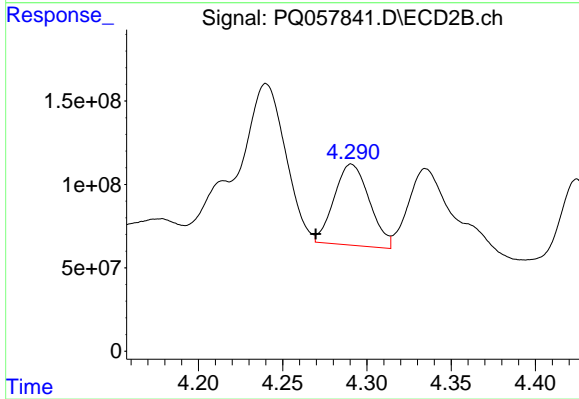
#7 AR-1016-5

R.T.: 5.618 min
 Delta R.T.: 0.000 min
 Response: 855820316
 Conc: 3028.32 ng/ml



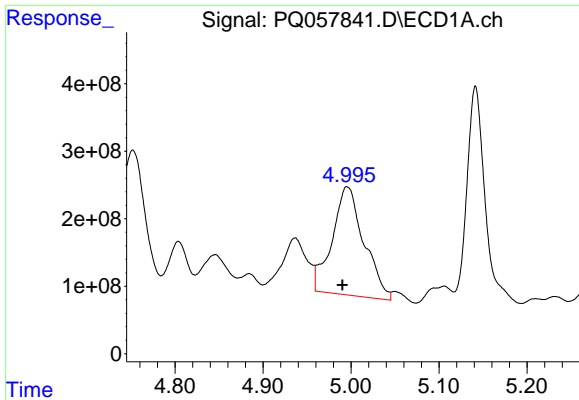
#8 AR-1221-1

R.T.: 4.884 min
 Delta R.T.: -0.018 min
 Response: 6081060
 Conc: 39.13 ng/ml



#8 AR-1221-1

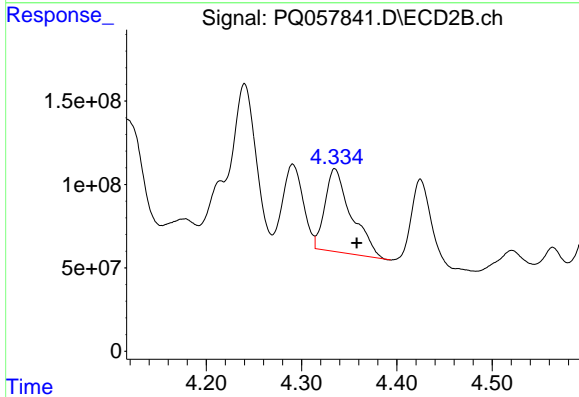
R.T.: 4.291 min
 Delta R.T.: 0.021 min
 Response: 709604001
 Conc: 5945.85 ng/ml



#9 AR-1221-2

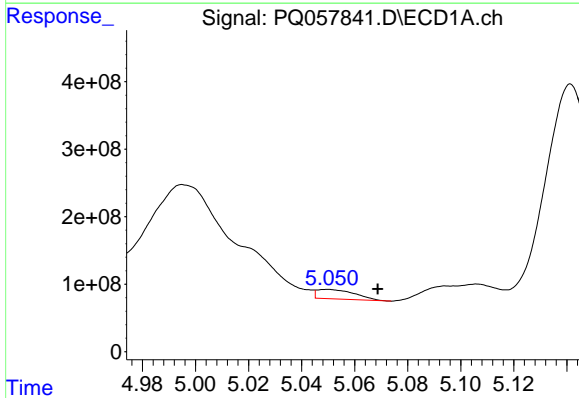
R.T.: 4.996 min
 Delta R.T.: 0.005 min
 Response: 4034459730
 Conc: 31225.08 ng/ml

Instrument :
 ECD_Q
 ClientSampleId :



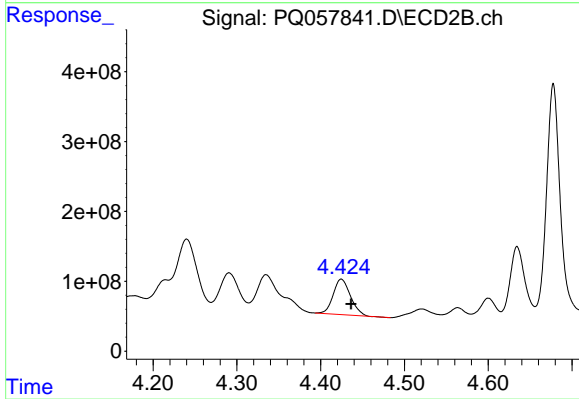
#9 AR-1221-2

R.T.: 4.335 min
 Delta R.T.: -0.023 min
 Response: 959420626
 Conc: 10661.93 ng/ml



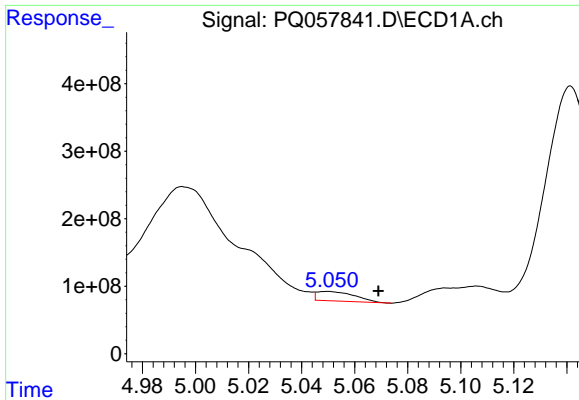
#10 AR-1221-3

R.T.: 5.050 min
 Delta R.T.: -0.019 min
 Response: 138510431
 Conc: 356.47 ng/ml



#10 AR-1221-3

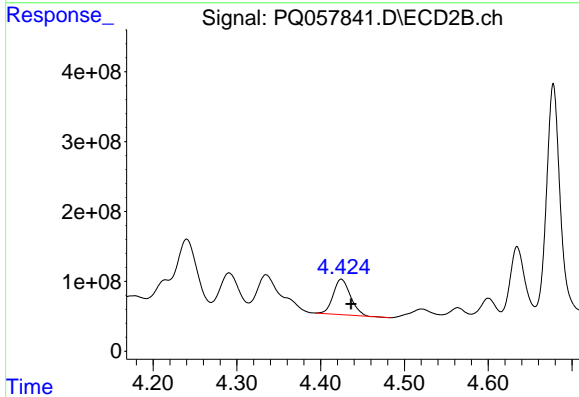
R.T.: 4.425 min
 Delta R.T.: -0.012 min
 Response: 726437294
 Conc: 2468.10 ng/ml



#11 AR-1232-1

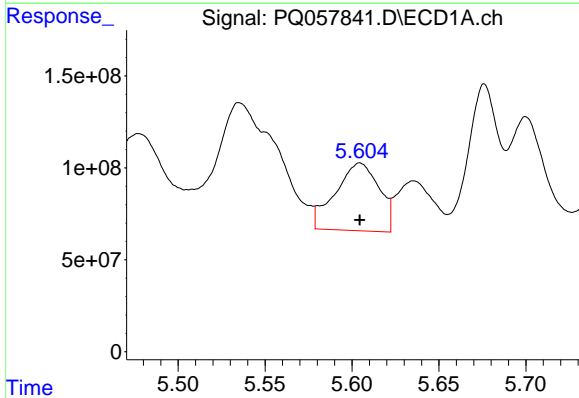
R.T.: 5.050 min
 Delta R.T.: -0.019 min
 Response: 138510431
 Conc: 403.60 ng/ml

Instrument :
 ECD_Q
 ClientSampleId :



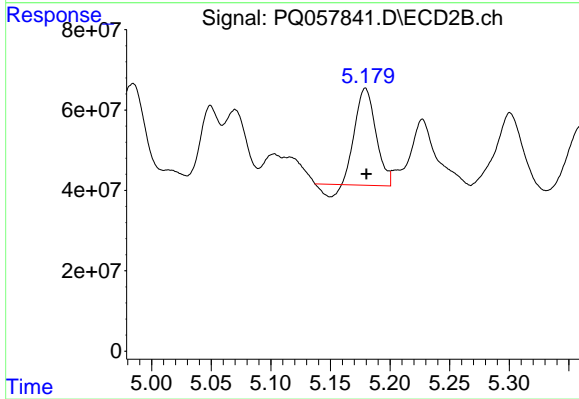
#11 AR-1232-1

R.T.: 4.425 min
 Delta R.T.: -0.012 min
 Response: 726437294
 Conc: 2785.93 ng/ml



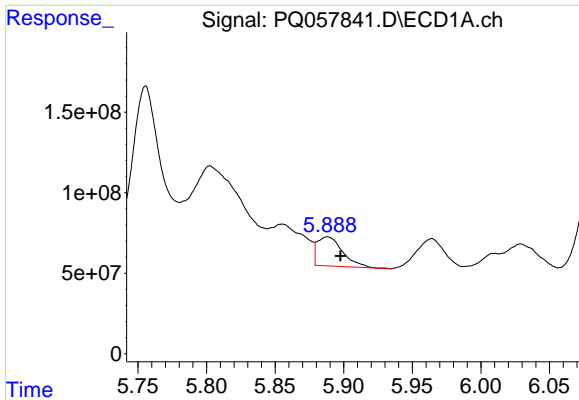
#12 AR-1232-2

R.T.: 5.605 min
 Delta R.T.: 0.000 min
 Response: 643346541
 Conc: 4091.44 ng/ml



#12 AR-1232-2

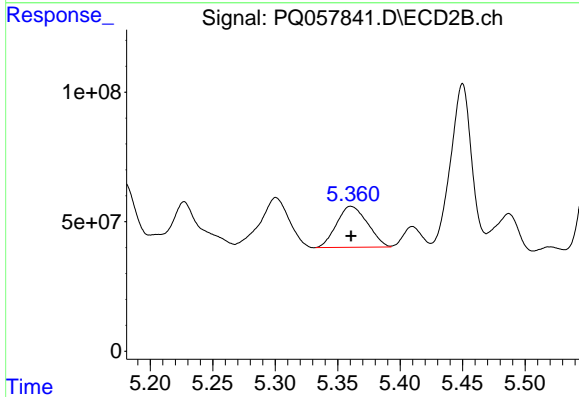
R.T.: 5.179 min
 Delta R.T.: 0.000 min
 Response: 282052436
 Conc: 1097.51 ng/ml



#13 AR-1232-3

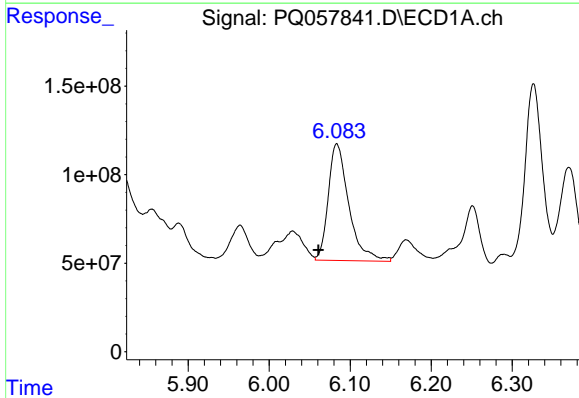
R.T.: 5.888 min
 Delta R.T.: -0.009 min
 Response: 232161661
 Conc: 737.35 ng/ml

Instrument :
 ECD_Q
 ClientSampleId :



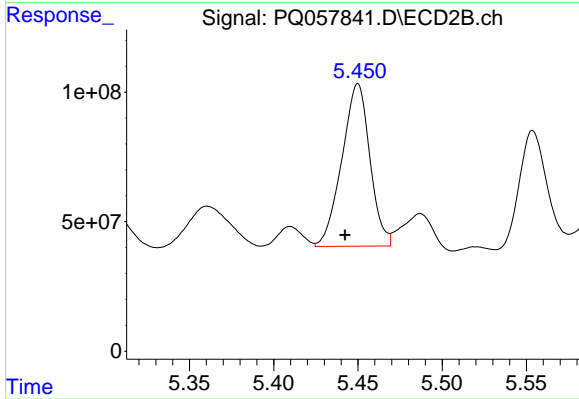
#13 AR-1232-3

R.T.: 5.361 min
 Delta R.T.: 0.000 min
 Response: 272659634
 Conc: 2147.24 ng/ml



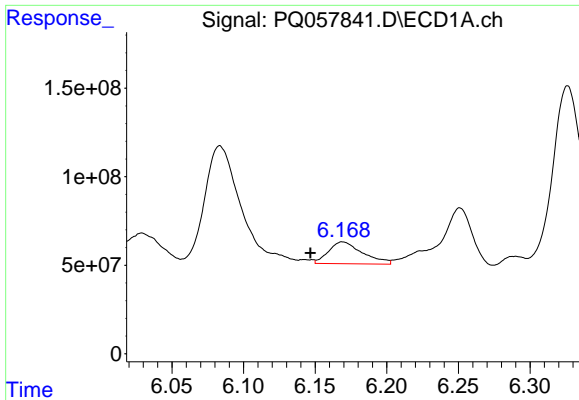
#14 AR-1232-4

R.T.: 6.083 min
 Delta R.T.: 0.023 min
 Response: 1161819988
 Conc: 6806.13 ng/ml



#14 AR-1232-4

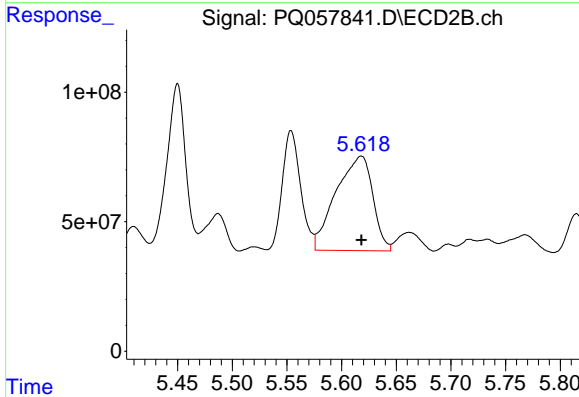
R.T.: 5.450 min
 Delta R.T.: 0.008 min
 Response: 725831861
 Conc: 6631.13 ng/ml



#15 AR-1232-5

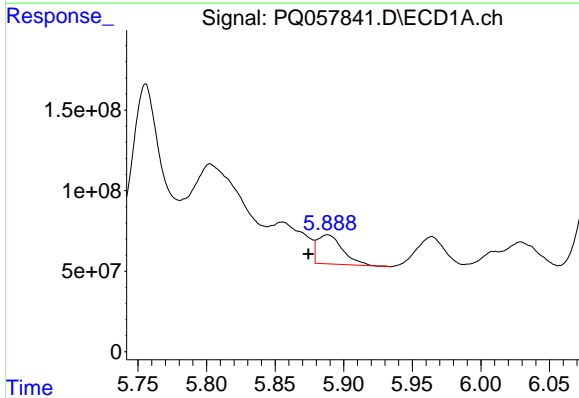
R.T.: 6.169 min
 Delta R.T.: 0.023 min
 Response: 203424496
 Conc: 2052.84 ng/m

Instrument :
 ECD_Q
 ClientSampleId :



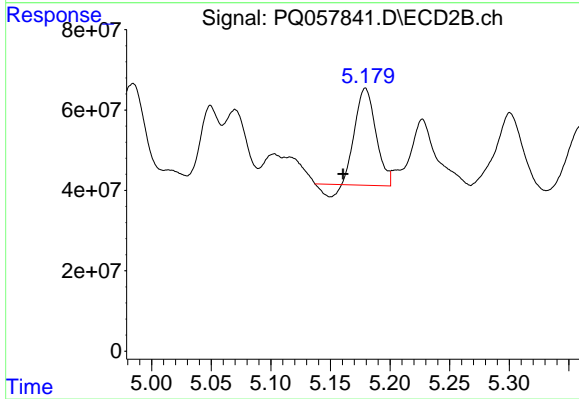
#15 AR-1232-5

R.T.: 5.618 min
 Delta R.T.: 0.000 min
 Response: 855820316
 Conc: 6851.41 ng/ml



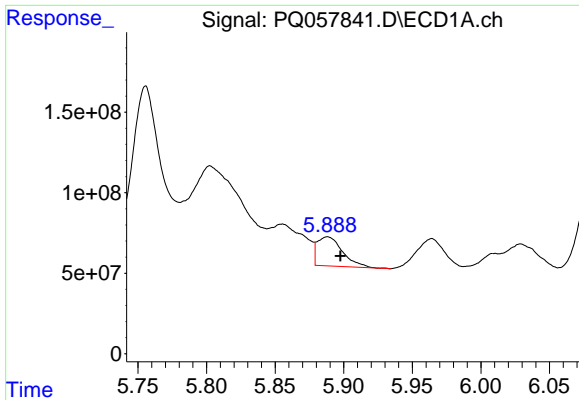
#16 AR-1242-1

R.T.: 5.888 min
 Delta R.T.: 0.014 min
 Response: 232161661
 Conc: 778.04 ng/ml



#16 AR-1242-1

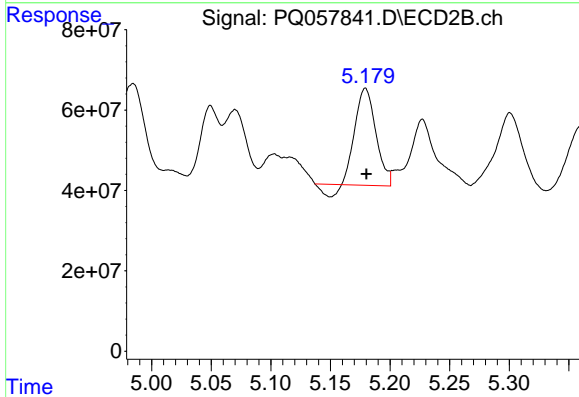
R.T.: 5.179 min
 Delta R.T.: 0.019 min
 Response: 282052436
 Conc: 957.99 ng/ml



#17 AR-1242-2

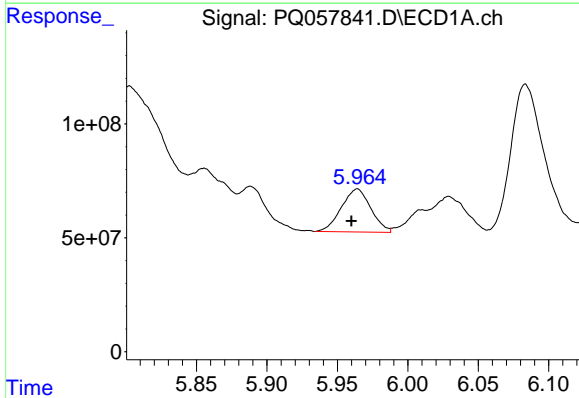
R.T.: 5.888 min
 Delta R.T.: -0.009 min
 Response: 232161661
 Conc: 452.82 ng/ml

Instrument :
 ECD_Q
 ClientSampleId :



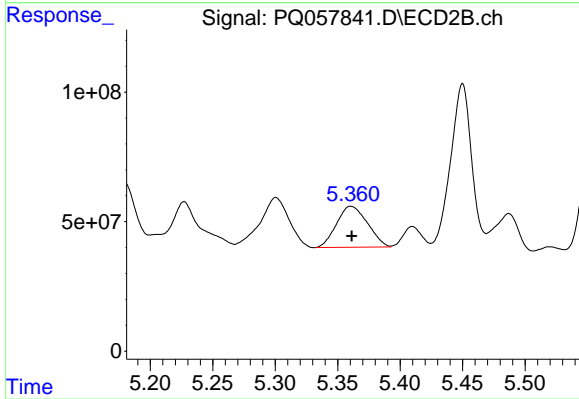
#17 AR-1242-2

R.T.: 5.179 min
 Delta R.T.: 0.000 min
 Response: 282052436
 Conc: 666.77 ng/ml



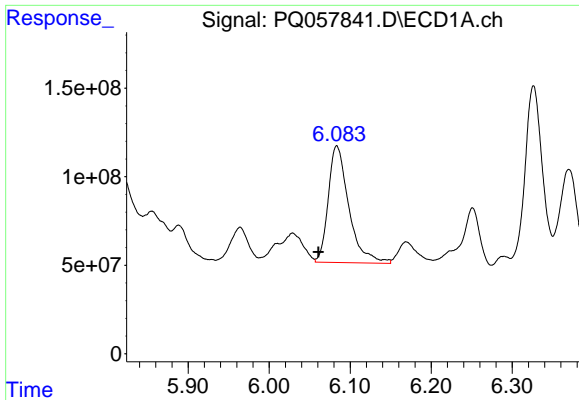
#18 AR-1242-3

R.T.: 5.964 min
 Delta R.T.: 0.004 min
 Response: 275398385
 Conc: 845.85 ng/ml



#18 AR-1242-3

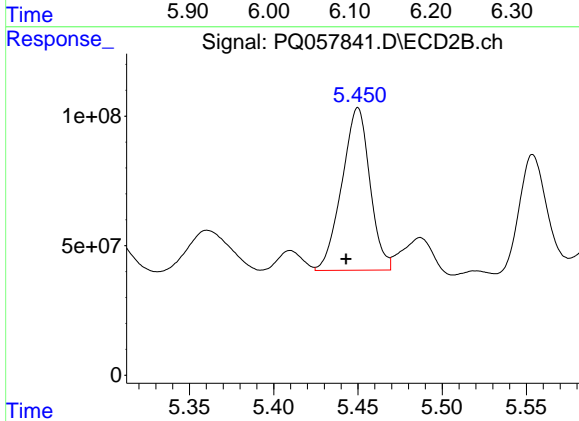
R.T.: 5.361 min
 Delta R.T.: 0.000 min
 Response: 272659634
 Conc: 1264.54 ng/ml



#19 AR-1242-4

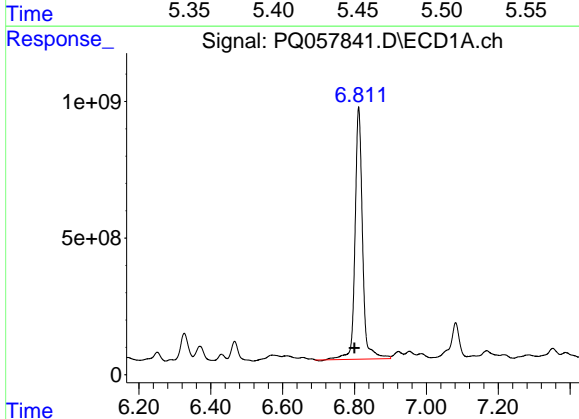
R.T.: 6.083 min
 Delta R.T.: 0.023 min
 Response: 1161819988
 Conc: 4202.22 ng/ml

Instrument :
 ECD_Q
 ClientSampleId :



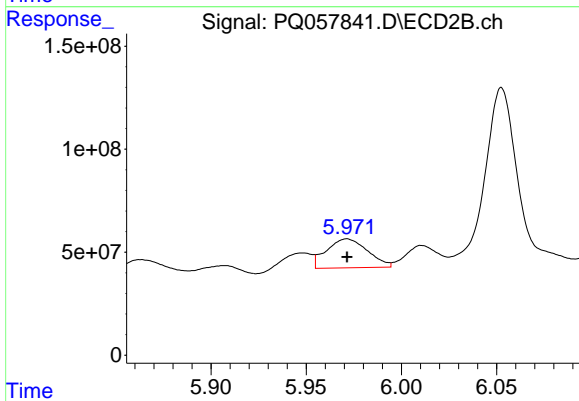
#19 AR-1242-4

R.T.: 5.450 min
 Delta R.T.: 0.007 min
 Response: 725831861
 Conc: 3552.50 ng/ml



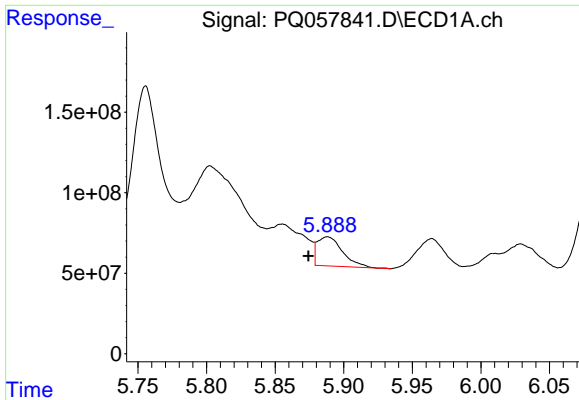
#20 AR-1242-5

R.T.: 6.812 min
 Delta R.T.: 0.012 min
 Response: 13375024899
 Conc: 54075.86 ng/ml



#20 AR-1242-5

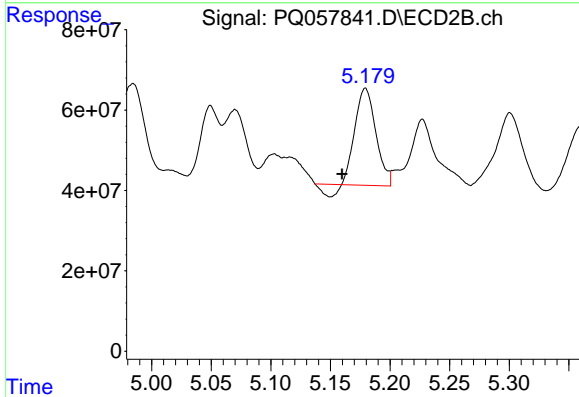
R.T.: 5.971 min
 Delta R.T.: 0.000 min
 Response: 211148492
 Conc: 790.67 ng/ml



#21 AR-1248-1

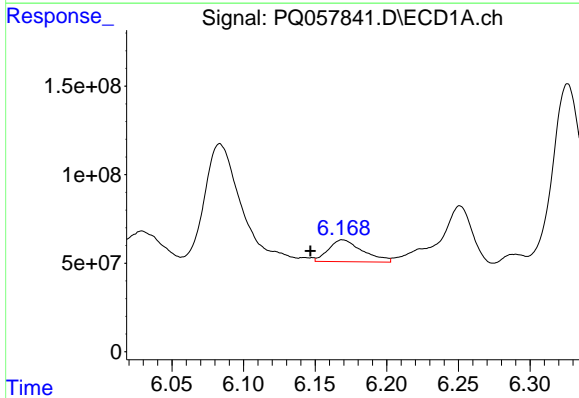
R.T.: 5.888 min
 Delta R.T.: 0.014 min
 Response: 232161661
 Conc: 1058.24 ng/ml

Instrument :
 ECD_Q
 ClientSampleId :



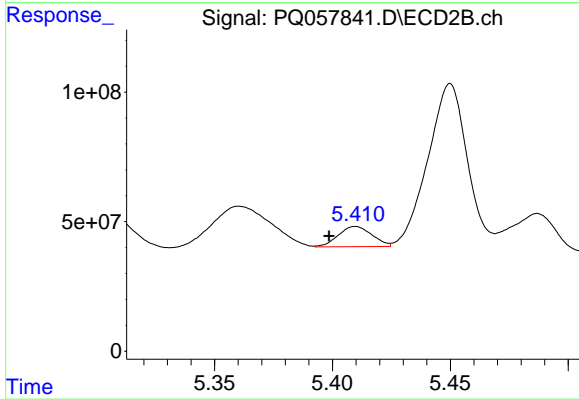
#21 AR-1248-1

R.T.: 5.179 min
 Delta R.T.: 0.019 min
 Response: 282052436
 Conc: 1308.27 ng/ml



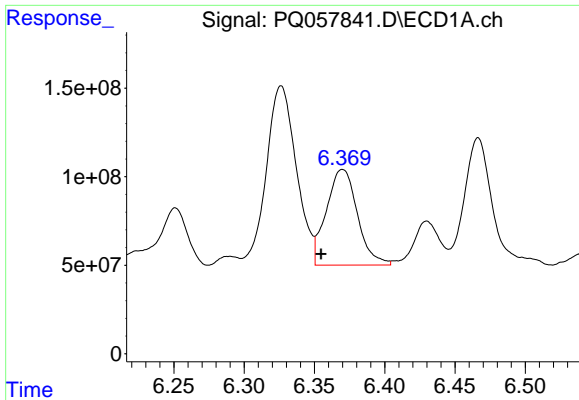
#22 AR-1248-2

R.T.: 6.169 min
 Delta R.T.: 0.023 min
 Response: 203424496
 Conc: 603.65 ng/ml



#22 AR-1248-2

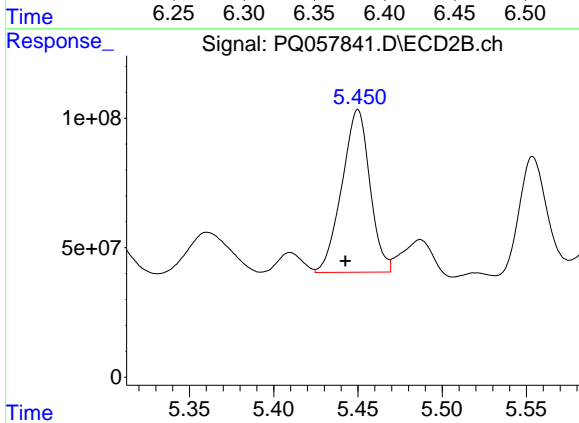
R.T.: 5.410 min
 Delta R.T.: 0.011 min
 Response: 77844064
 Conc: 264.85 ng/ml



#23 AR-1248-3

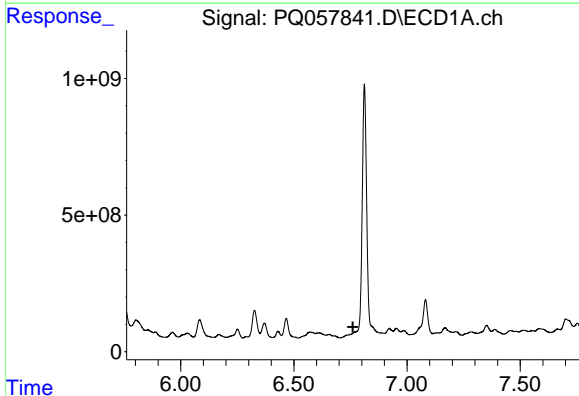
R.T.: 6.370 min
 Delta R.T.: 0.015 min
 Response: 832322876
 Conc: 2291.72 ng/ml

Instrument :
 ECD_Q
 ClientSampleId :



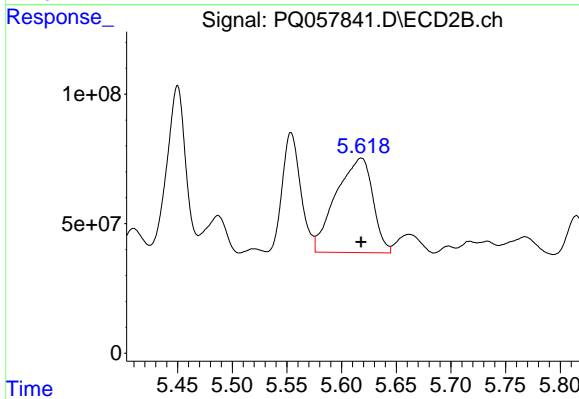
#23 AR-1248-3

R.T.: 5.450 min
 Delta R.T.: 0.007 min
 Response: 725831861
 Conc: 2382.87 ng/ml



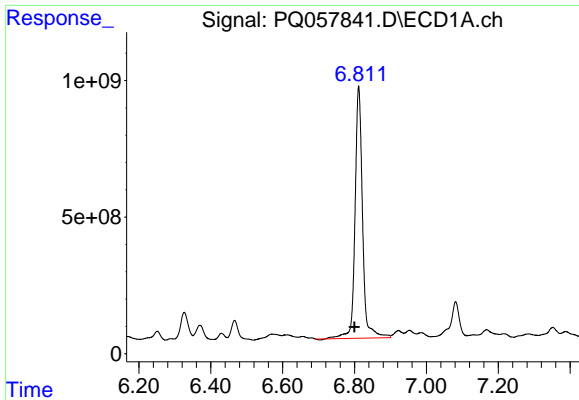
#24 AR-1248-4

R.T.: 0.000 min
 Exp R.T. : 6.761 min
 Response: 0
 Conc: N.D.



#24 AR-1248-4

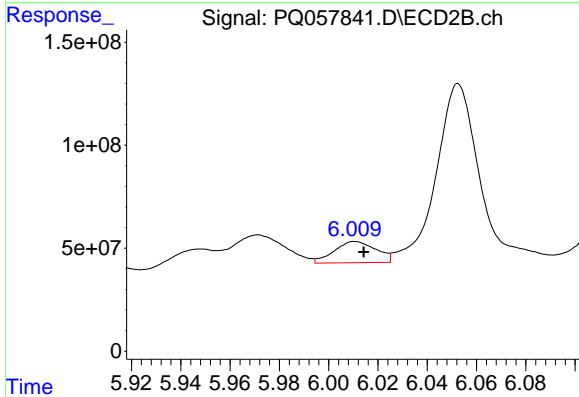
R.T.: 5.618 min
 Delta R.T.: 0.000 min
 Response: 855820316
 Conc: 2026.81 ng/ml



#25 AR-1248-5

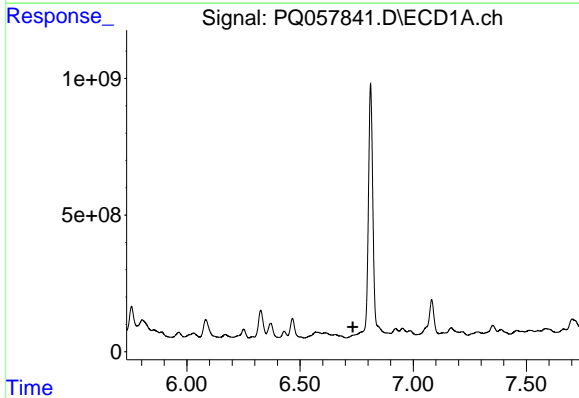
R.T.: 6.812 min
 Delta R.T.: 0.012 min
 Response: 13375024899
 Conc: 32251.51 ng/ml

Instrument :
 ECD_Q
 ClientSampleId :



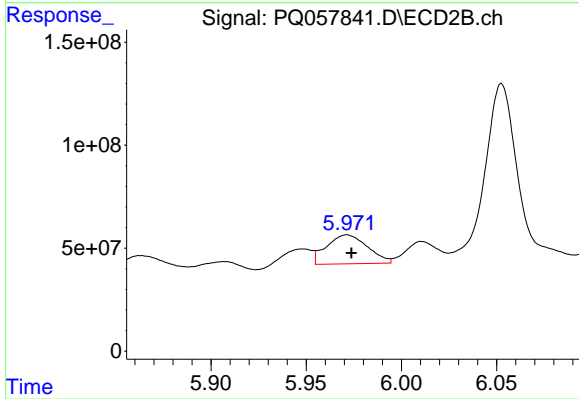
#25 AR-1248-5

R.T.: 6.011 min
 Delta R.T.: -0.003 min
 Response: 121660341
 Conc: 321.43 ng/ml



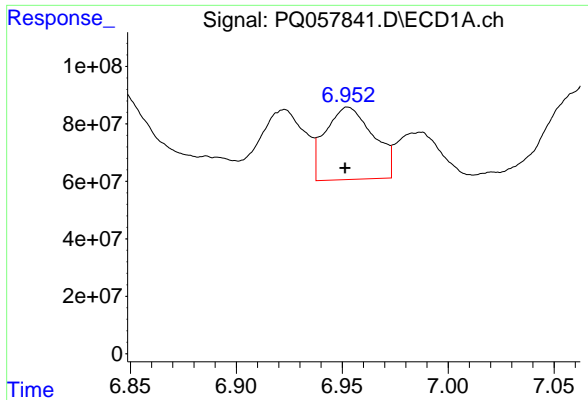
#26 AR-1254-1

R.T.: 0.000 min
 Exp R.T. : 6.734 min
 Response: 0
 Conc: N.D.



#26 AR-1254-1

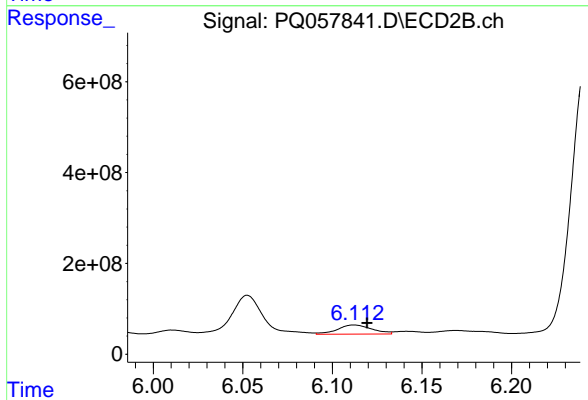
R.T.: 5.971 min
 Delta R.T.: -0.002 min
 Response: 211148492
 Conc: 357.76 ng/ml



#27 AR-1254-2

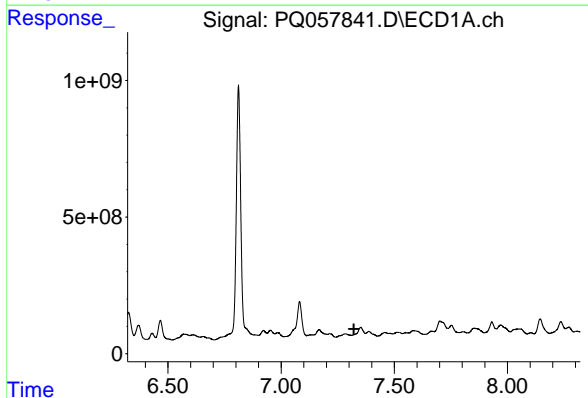
R.T.: 6.953 min
 Delta R.T.: 0.002 min
 Response: 397217578
 Conc: 658.27 ng/ml

Instrument :
 ECD_Q
 ClientSampleId :



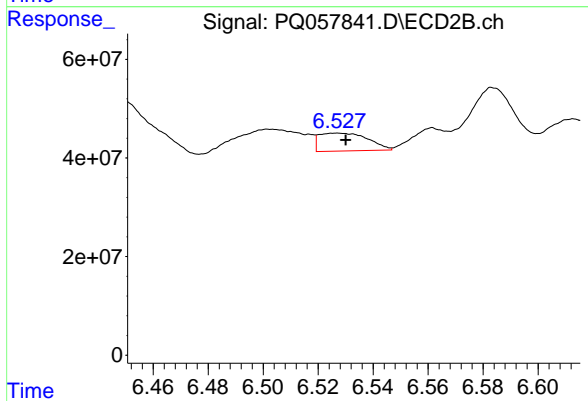
#27 AR-1254-2

R.T.: 6.112 min
 Delta R.T.: -0.007 min
 Response: 267938593
 Conc: 536.85 ng/ml



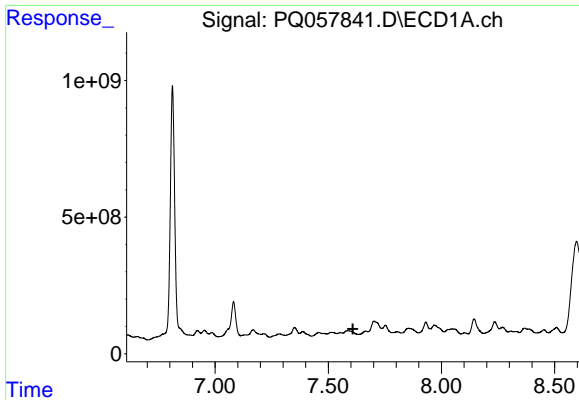
#28 AR-1254-3

R.T.: 0.000 min
 Exp R.T. : 7.322 min
 Response: 0
 Conc: N.D.



#28 AR-1254-3

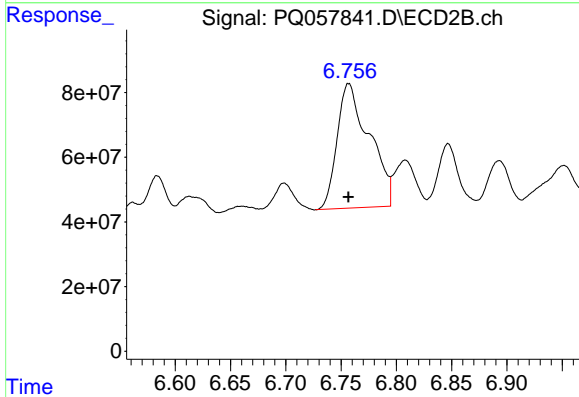
R.T.: 6.527 min
 Delta R.T.: -0.003 min
 Response: 45204139
 Conc: 53.18 ng/ml



#29 AR-1254-4

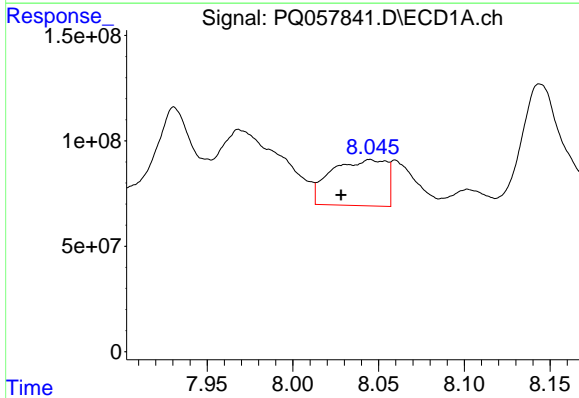
R.T.: 0.000 min
 Exp R.T.: 7.609 min
 Response: 0
 Conc: N.D.

Instrument :
 ECD_Q
 ClientSampleId :



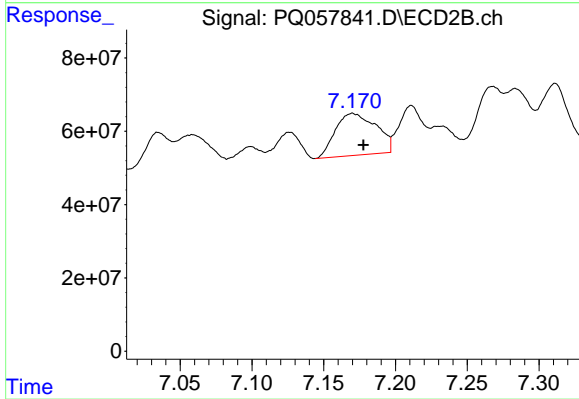
#29 AR-1254-4

R.T.: 6.757 min
 Delta R.T.: 0.000 min
 Response: 778939176
 Conc: 1517.15 ng/ml



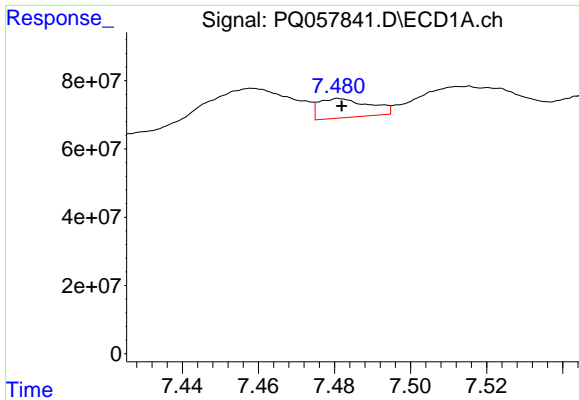
#30 AR-1254-5

R.T.: 8.045 min
 Delta R.T.: 0.017 min
 Response: 488376721
 Conc: 861.16 ng/ml



#30 AR-1254-5

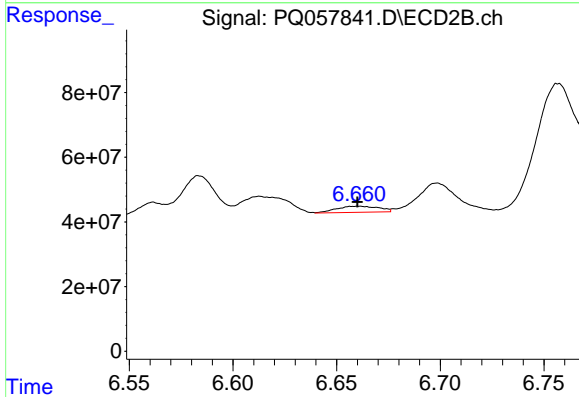
R.T.: 7.170 min
 Delta R.T.: -0.008 min
 Response: 225902939
 Conc: 339.31 ng/ml



#31 AR-1260-1

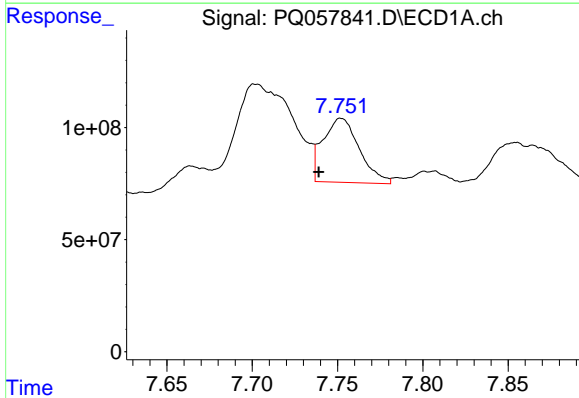
R.T.: 7.481 min
 Delta R.T.: 0.000 min
 Response: 51568724
 Conc: 117.90 ng/ml

Instrument :
 ECD_Q
 ClientSampleId :



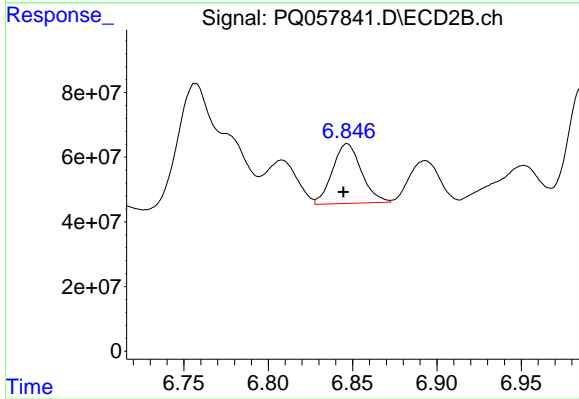
#31 AR-1260-1

R.T.: 6.660 min
 Delta R.T.: 0.000 min
 Response: 26830282
 Conc: 51.64 ng/ml



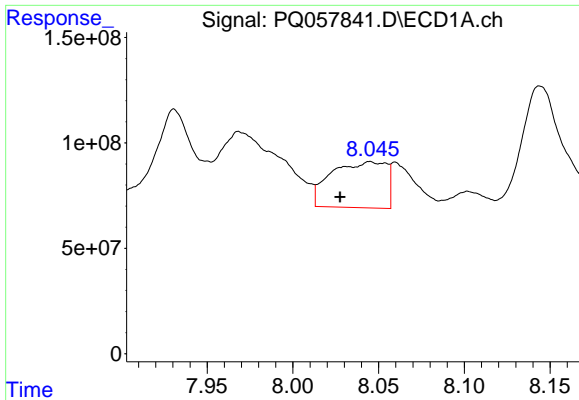
#32 AR-1260-2

R.T.: 7.752 min
 Delta R.T.: 0.013 min
 Response: 424174737
 Conc: 765.52 ng/ml



#32 AR-1260-2

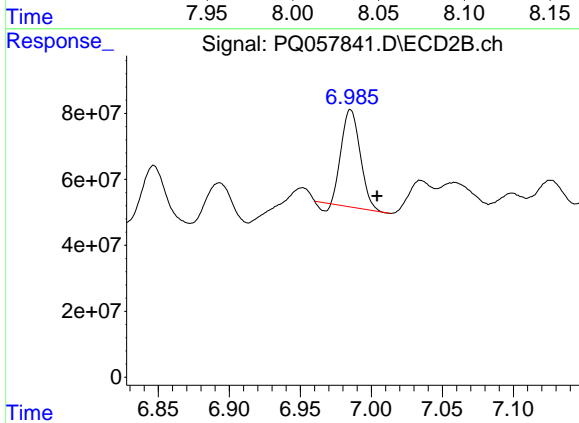
R.T.: 6.847 min
 Delta R.T.: 0.002 min
 Response: 220598892
 Conc: 353.74 ng/ml



#33 AR-1260-3

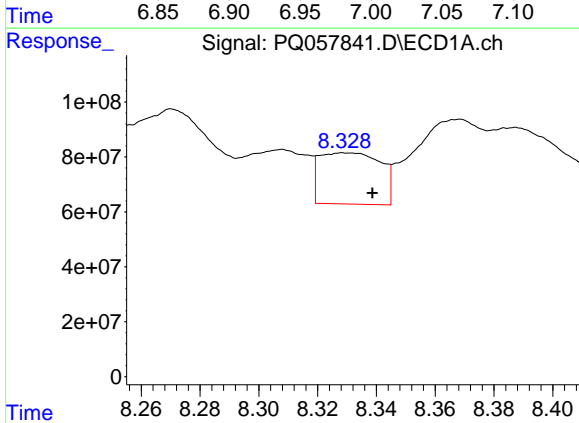
R.T.: 8.045 min
 Delta R.T.: 0.018 min
 Response: 488376721
 Conc: 725.04 ng/ml

Instrument :
 ECD_Q
 ClientSampleId :



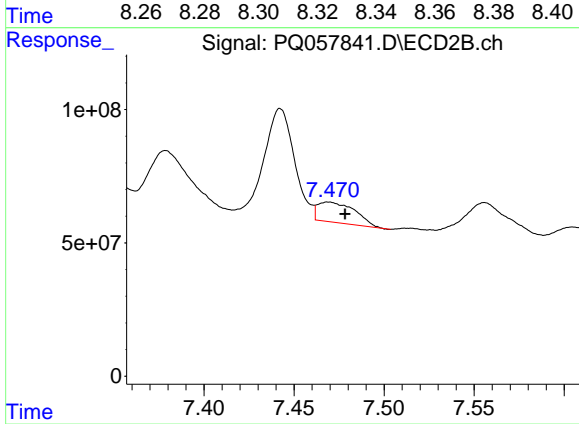
#33 AR-1260-3

R.T.: 6.985 min
 Delta R.T.: -0.019 min
 Response: 264152892
 Conc: 405.55 ng/ml



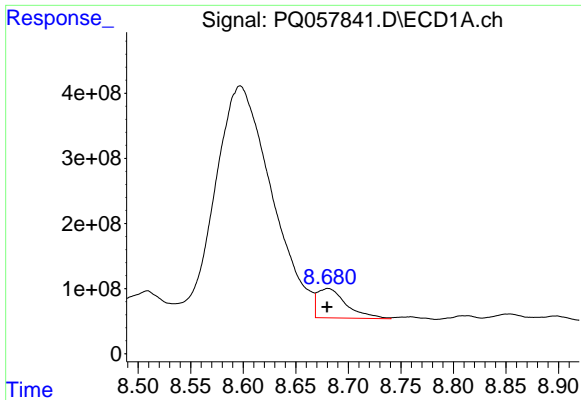
#34 AR-1260-4

R.T.: 8.329 min
 Delta R.T.: -0.009 min
 Response: 270139608
 Conc: 541.37 ng/ml



#34 AR-1260-4

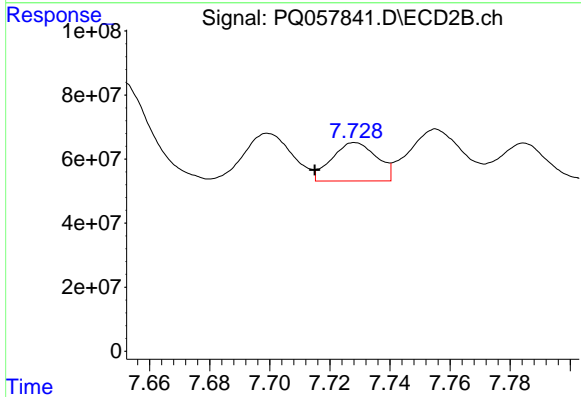
R.T.: 7.469 min
 Delta R.T.: -0.009 min
 Response: 109951704
 Conc: 218.66 ng/ml



#35 AR-1260-5

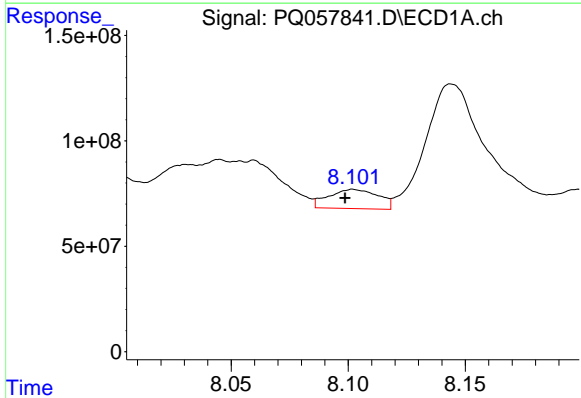
R.T.: 8.681 min
 Delta R.T.: 0.001 min
 Response: 866430322
 Conc: 777.68 ng/ml

Instrument :
 ECD_Q
 ClientSampleId :



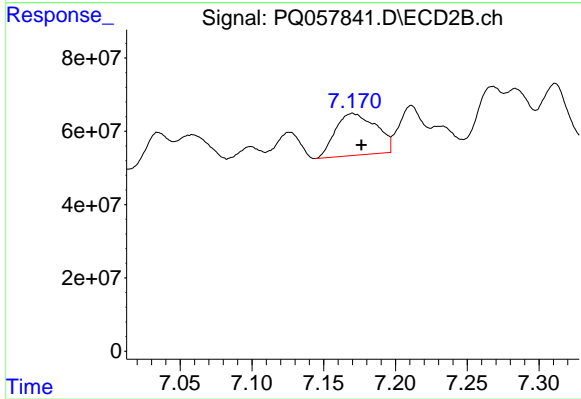
#35 AR-1260-5

R.T.: 7.728 min
 Delta R.T.: 0.013 min
 Response: 124485426
 Conc: 101.37 ng/ml



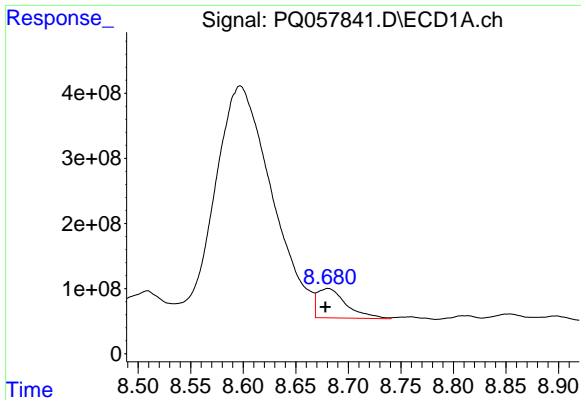
#36 AR-1262-1

R.T.: 8.102 min
 Delta R.T.: 0.003 min
 Response: 134254147
 Conc: 217.82 ng/ml



#36 AR-1262-1

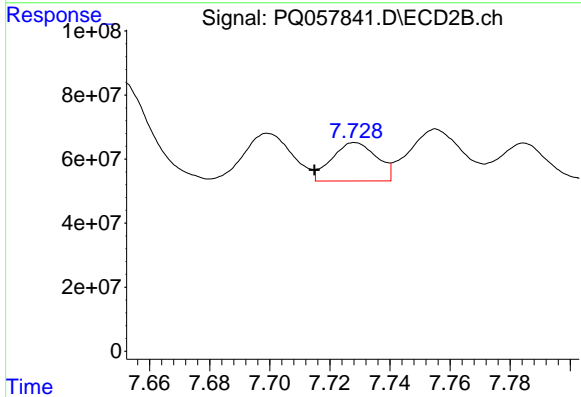
R.T.: 7.170 min
 Delta R.T.: -0.006 min
 Response: 225902939
 Conc: 625.04 ng/ml



#37 AR-1262-2

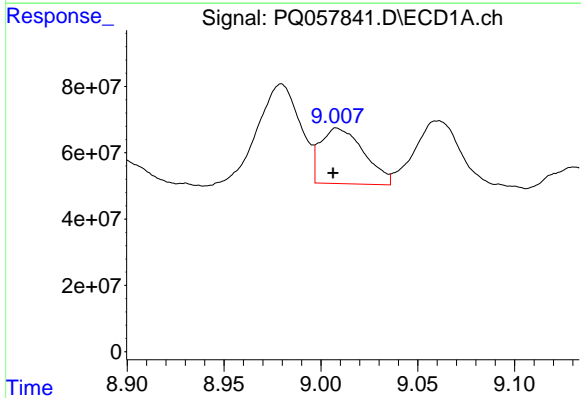
R.T.: 8.681 min
 Delta R.T.: 0.002 min
 Response: 866430322
 Conc: 659.15 ng/ml

Instrument :
 ECD_Q
 ClientSampleId :



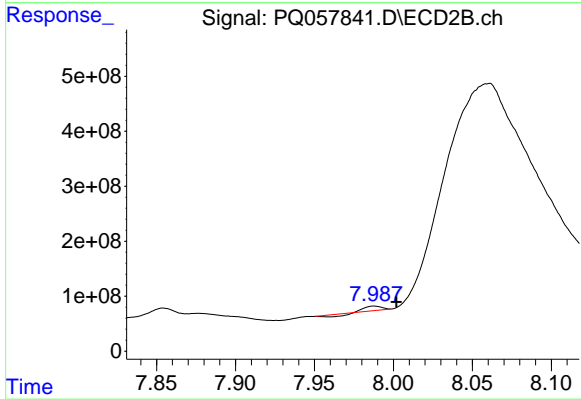
#37 AR-1262-2

R.T.: 7.728 min
 Delta R.T.: 0.014 min
 Response: 124485426
 Conc: 87.31 ng/ml



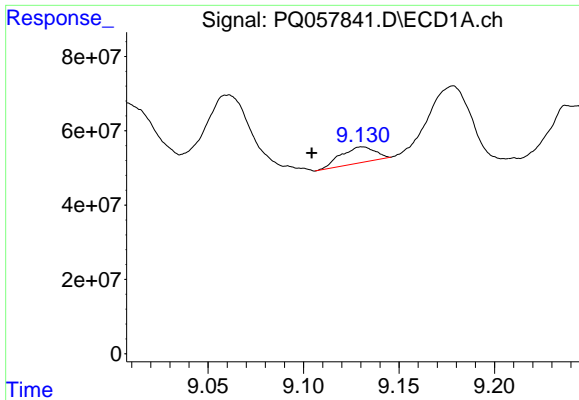
#38 AR-1262-3

R.T.: 9.008 min
 Delta R.T.: 0.002 min
 Response: 262382639
 Conc: 421.40 ng/ml



#38 AR-1262-3

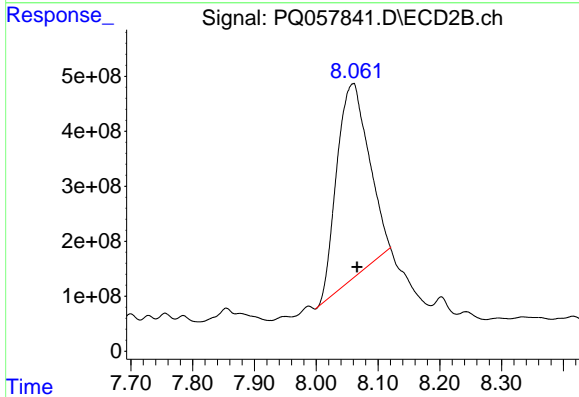
R.T.: 7.988 min
 Delta R.T.: -0.014 min
 Response: 29328969
 Conc: 56.14 ng/ml



#39 AR-1262-4

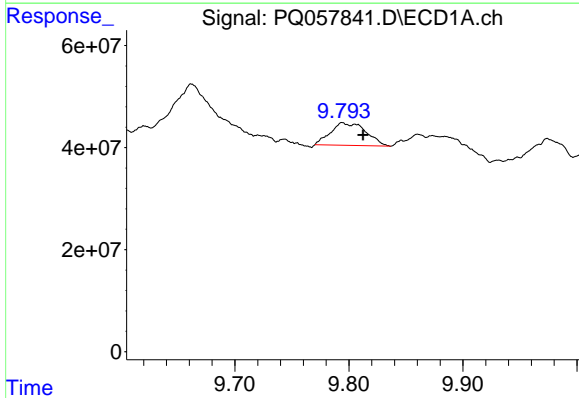
R.T.: 9.131 min
 Delta R.T.: 0.026 min
 Response: 53320213
 Conc: 102.76 ng/ml

Instrument :
 ECD_Q
 ClientSampleId :



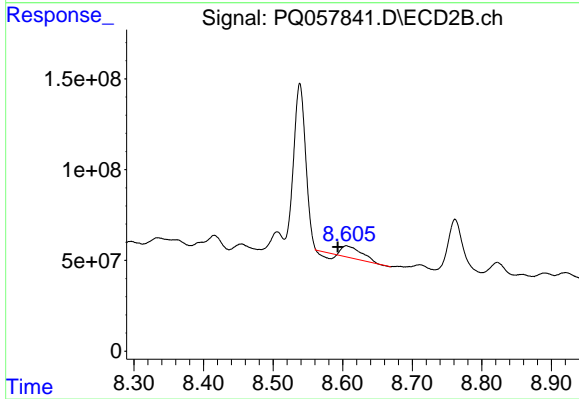
#39 AR-1262-4

R.T.: 8.060 min
 Delta R.T.: -0.006 min
 Response: 12767815042
 Conc: 12629.17 ng/ml



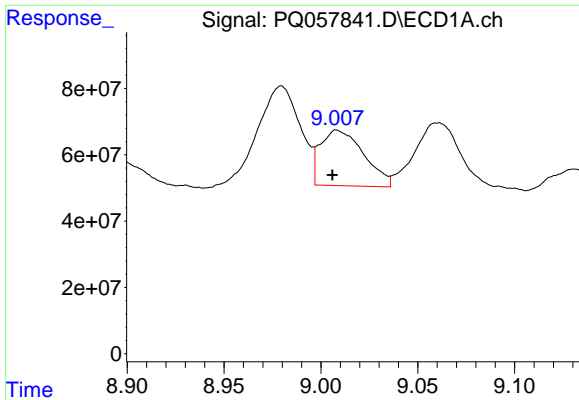
#40 AR-1262-5

R.T.: 9.794 min
 Delta R.T.: -0.018 min
 Response: 95606254
 Conc: 181.02 ng/ml



#40 AR-1262-5

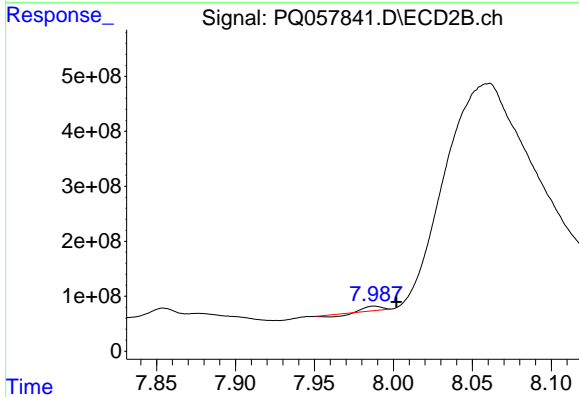
R.T.: 8.605 min
 Delta R.T.: 0.012 min
 Response: 101246101
 Conc: 227.10 ng/ml



#41 AR-1268-1

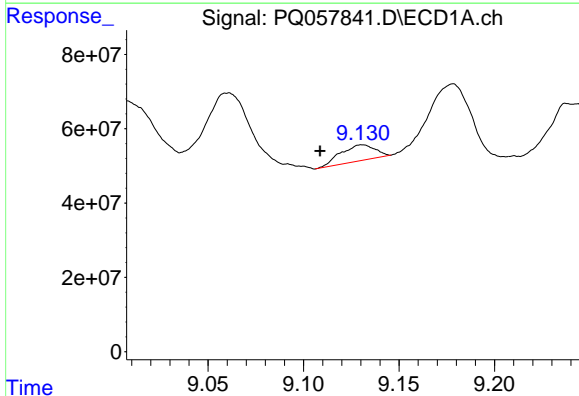
R.T.: 9.008 min
 Delta R.T.: 0.002 min
 Response: 262382639
 Conc: 163.84 ng/ml

Instrument :
 ECD_Q
 ClientSampleId :



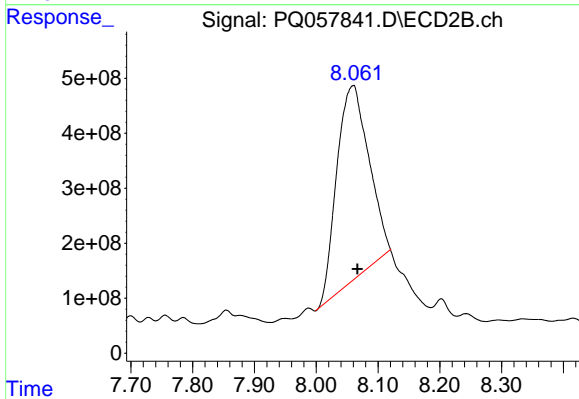
#41 AR-1268-1

R.T.: 7.988 min
 Delta R.T.: -0.014 min
 Response: 29328969
 Conc: 18.29 ng/ml



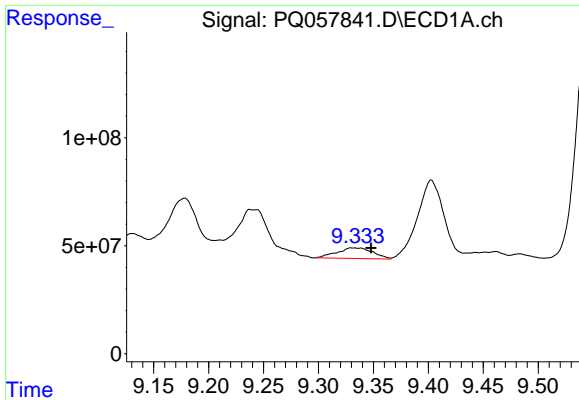
#42 AR-1268-2

R.T.: 9.131 min
 Delta R.T.: 0.022 min
 Response: 53320213
 Conc: 31.33 ng/ml



#42 AR-1268-2

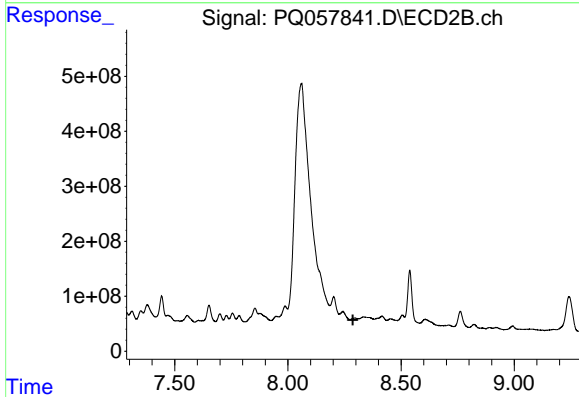
R.T.: 8.060 min
 Delta R.T.: -0.007 min
 Response: 12767815042
 Conc: 8435.73 ng/ml



#43 AR-1268-3

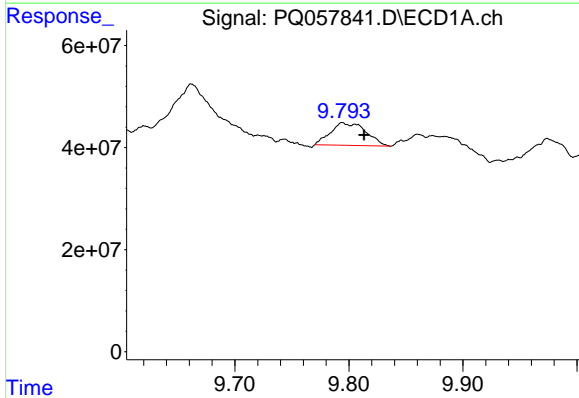
R.T.: 9.331 min
 Delta R.T.: -0.017 min
 Response: 112180677
 Conc: 75.51 ng/ml

Instrument :
 ECD_Q
 ClientSampleId :



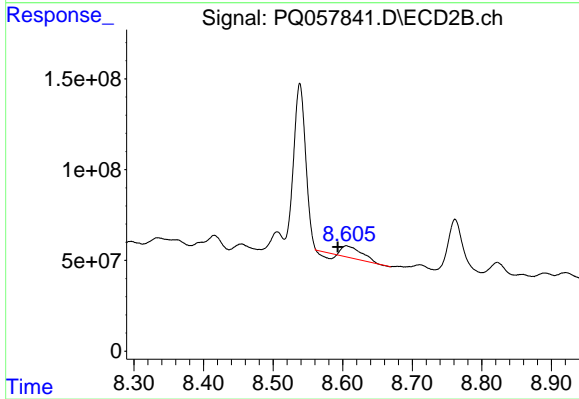
#43 AR-1268-3

R.T.: 8.296 min
 Delta R.T.: 0.008 min
 Response: -29844958
 Conc: N.D.



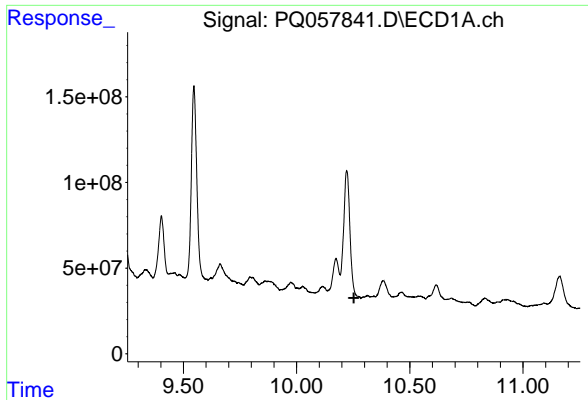
#44 AR-1268-4

R.T.: 9.794 min
 Delta R.T.: -0.019 min
 Response: 95606254
 Conc: 161.12 ng/ml



#44 AR-1268-4

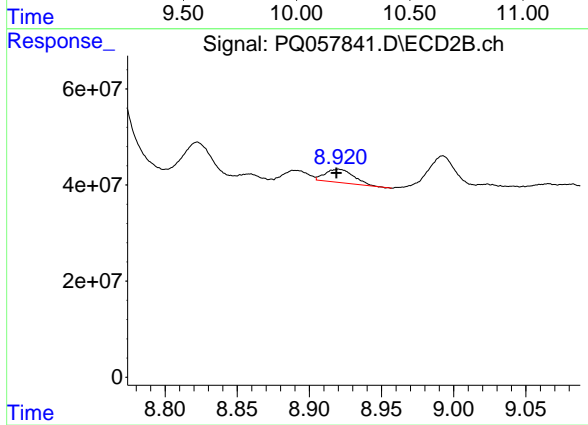
R.T.: 8.605 min
 Delta R.T.: 0.012 min
 Response: 101246101
 Conc: 203.27 ng/ml



#45 AR-1268-5

R.T.: 0.000 min
 Exp R.T.: 10.253 min
 Response: 0
 Conc: N.D.

Instrument :
 ECD_Q
 ClientSampleId :



#45 AR-1268-5

R.T.: 8.920 min
 Delta R.T.: 0.002 min
 Response: 38339841
 Conc: 9.68 ng/ml