

Data Path : Z:\pestpcbsrv\HPCHEM1\ECD_Q\Data\PQ053023\
 Data File : PQ061323.D
 Signal(s) : Signal #1: ECD1A.ch Signal #2: ECD2B.ch
 Acq On : 30 May 2023 15:05
 Operator : YP\AJ
 Sample : 02955-07
 Misc :
 ALS Vial : 15 Sample Multiplier: 1

Instrument :
 ECD_Q
 ClientSampleId :
 WC26

Integration File signal 1: autoint1.e
 Integration File signal 2: autoint2.e
 Quant Time: May 30 20:54:44 2023
 Quant Method : Z:\pestpcbsrv\HPCHEM1\ECD_Q\Method\PQ052523.M
 Quant Title : GC EXTRACTABLES
 QLast Update : Thu May 25 13:25:08 2023
 Response via : Initial Calibration
 Integrator: ChemStation

Volume Inj. : 2 µl
 Signal #1 Phase : ZB-MR1 Signal #2 Phase: ZB-MR2
 Signal #1 Info : 30Mx0.32mmx 0.50µ Signal #2 Info : 30M x 0.32mm x 0.25µm

Compound	RT#1	RT#2	Resp#1	Resp#2	ng/ml	ng/ml

System Monitoring Compounds						
1) SA Tetrachlo...	3.405	2.762	77069091	53794979	15.381	18.621
2) SA Decachlor...	8.585	7.535	35568454	40129146	9.195	11.020

Target Compounds

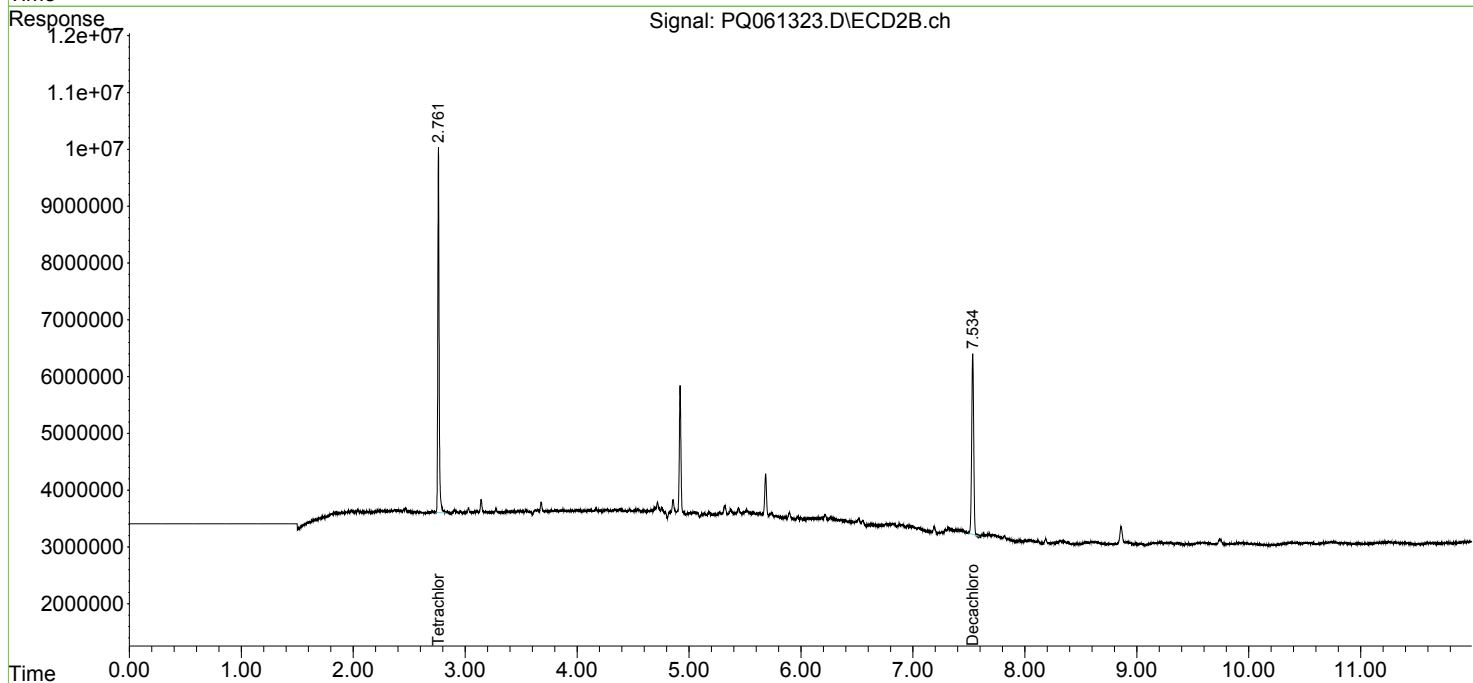
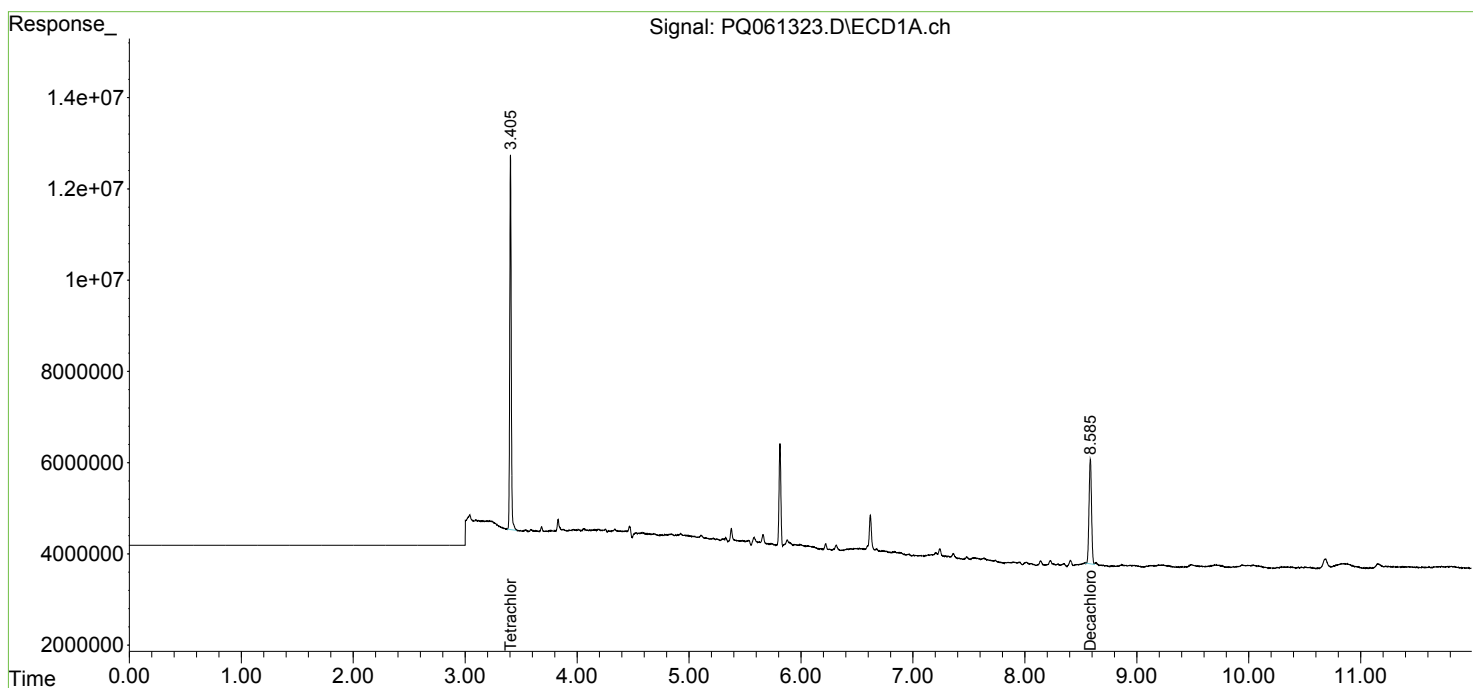
(f)=RT Delta > 1/2 Window (#)=Amounts differ by > 25% (m)=manual int.

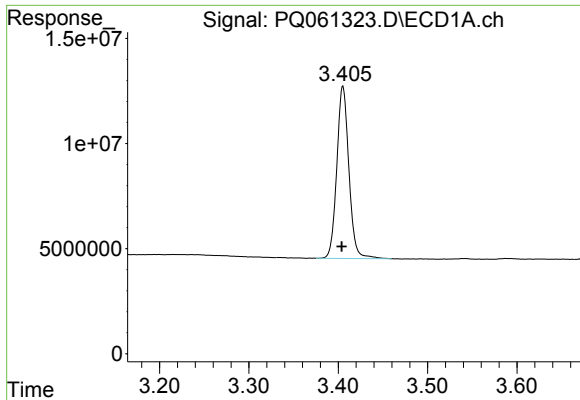
Data Path : Z:\pestpcbsrv\HPCHEM1\ECD_Q\Data\PQ053023\
 Data File : PQ061323.D
 Signal(s) : Signal #1: ECD1A.ch Signal #2: ECD2B.ch
 Acq On : 30 May 2023 15:05
 Operator : YP\AJ
 Sample : 02955-07
 Misc :
 ALS Vial : 15 Sample Multiplier: 1

Instrument :
 ECD_Q
 ClientSampleId :
 WC26

Integration File signal 1: autoint1.e
 Integration File signal 2: autoint2.e
 Quant Time: May 30 20:54:44 2023
 Quant Method : Z:\pestpcbsrv\HPCHEM1\ECD_Q\Method\PQ052523.M
 Quant Title : GC EXTRACTABLES
 QLast Update : Thu May 25 13:25:08 2023
 Response via : Initial Calibration
 Integrator: ChemStation

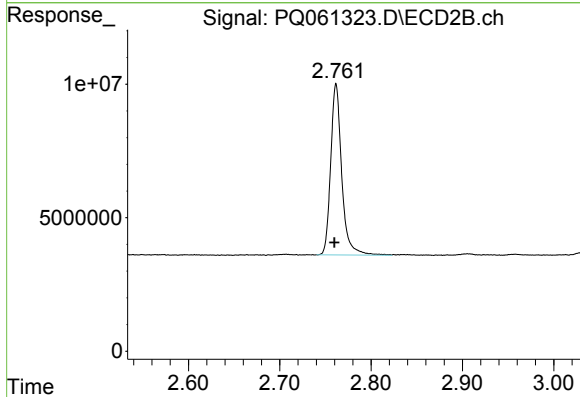
Volume Inj. : 2 µl
 Signal #1 Phase : ZB-MR1 Signal #2 Phase: ZB-MR2
 Signal #1 Info : 30Mx0.32mmx 0.50µ Signal #2 Info : 30M x 0.32mm x 0.25µm



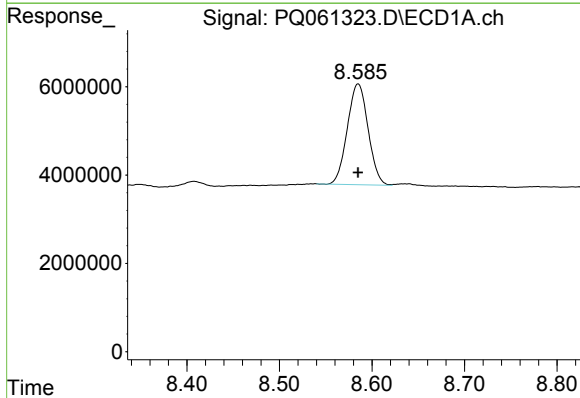


#1 Tetrachloro-m-xylene
 R.T.: 3.405 min
 Delta R.T.: 0.001 min
 Response: 77069091
 Conc: 15.38 ng/ml

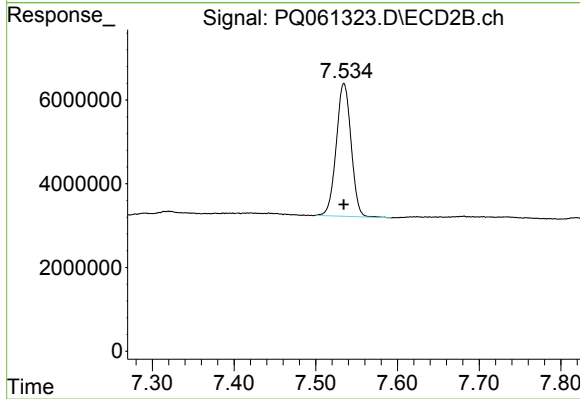
Instrument :
 ECD_Q
 ClientSampleId :
 WC26



#1 Tetrachloro-m-xylene
 R.T.: 2.762 min
 Delta R.T.: 0.002 min
 Response: 53794979
 Conc: 18.62 ng/ml



#2 Decachlorobiphenyl
 R.T.: 8.585 min
 Delta R.T.: 0.000 min
 Response: 35568454
 Conc: 9.20 ng/ml



#2 Decachlorobiphenyl
 R.T.: 7.535 min
 Delta R.T.: 0.000 min
 Response: 40129146
 Conc: 11.02 ng/ml