

Data Path : Z:\pestpcbsrv\HPCHEM1\ECD\_Q\Data\PQ053122\  
 Data File : PQ057880.D  
 Signal(s) : Signal #1: ECD1A.ch Signal #2: ECD2B.ch  
 Acq On : 31 May 2022 14:35  
 Operator : YP\AJ  
 Sample : N2930-08DL 2X  
 Misc :  
 ALS Vial : 22 Sample Multiplier: 1

Instrument :  
 ECD\_Q  
 ClientSampleId :  
 P005-SS003-0612-01DL

Integration File signal 1: autoint1.e  
 Integration File signal 2: autoint2.e  
 Quant Time: Jun 01 03:41:32 2022  
 Quant Method : Z:\pestpcbsrv\HPCHEM1\ECD\_Q\Method\PQ052822.M  
 Quant Title : GC EXTRACTABLES  
 QLast Update : Sat May 28 06:33:00 2022  
 Response via : Initial Calibration  
 Integrator: ChemStation

Volume Inj. : 2 µl  
 Signal #1 Phase : ZB-MR1 Signal #2 Phase: ZB-MR2  
 Signal #1 Info : 30Mx0.32mmx 0.50µ Signal #2 Info : 30M x 0.32mm x 0.25µm

Compound	RT#1	RT#2	Resp#1	Resp#2	ng/ml	ng/ml
-----						
System Monitoring Compounds						
1) SA Tetrachlo...	4.689	4.054	117.0E6	102.0E6	8.106	8.974
2) SA Decachlor...	10.613	9.209	108.9E6	73178774	8.679	7.711
Target Compounds						
31) L7 AR-1260-1	7.483	6.660	109.4E6	138.4E6	250.099	266.353
32) L7 AR-1260-2	7.739	6.844	316.3E6	375.8E6	570.864	602.568
33) L7 AR-1260-3	8.029	7.004	575.3E6	258.3E6	854.108	396.582 #
34) L7 AR-1260-4	8.339	7.478	364.9E6	338.8E6	731.207	673.694
35) L7 AR-1260-5	8.681	7.715	875.0E6	922.9E6	785.339	751.556
-----						

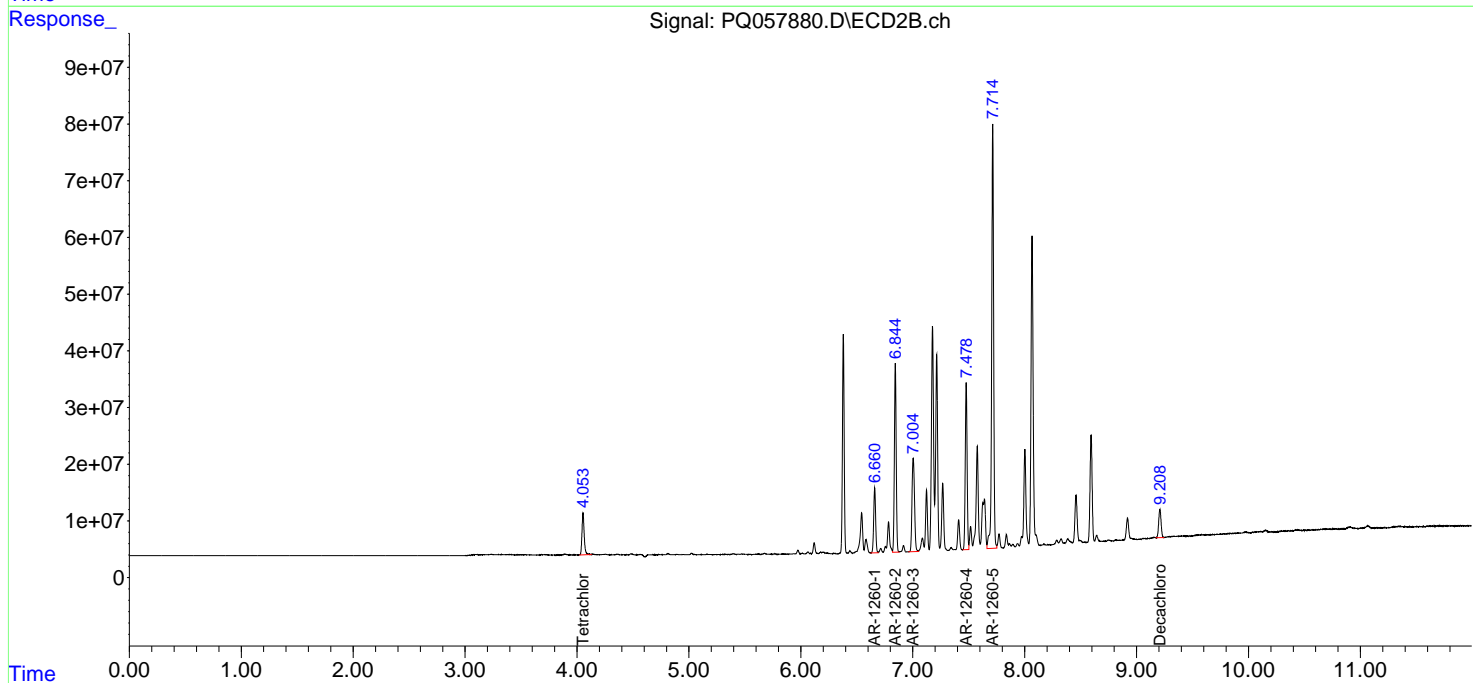
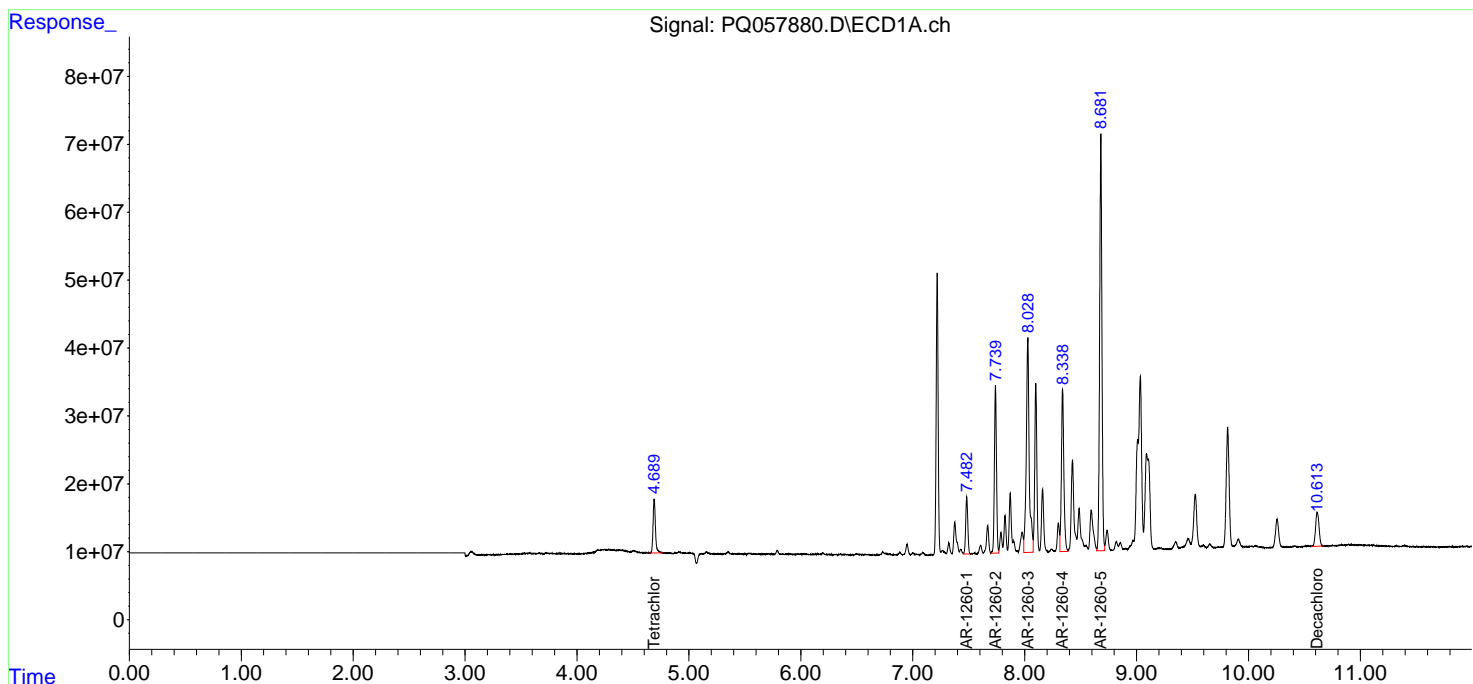
(f)=RT Delta > 1/2 Window (#)=Amounts differ by > 25% (m)=manual int.

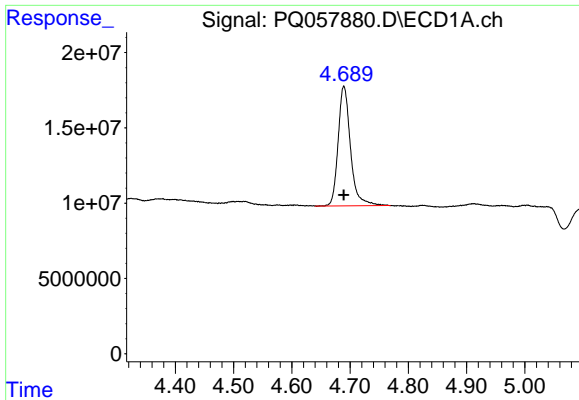
Data Path : Z:\pestpcbsrv\HPCHEM1\ECD\_Q\Data\PQ053122\  
 Data File : PQ057880.D  
 Signal(s) : Signal #1: ECD1A.ch Signal #2: ECD2B.ch  
 Acq On : 31 May 2022 14:35  
 Operator : YP\AJ  
 Sample : N2930-08DL 2X  
 Misc :  
 ALS Vial : 22 Sample Multiplier: 1

Instrument :  
 ECD\_Q  
 ClientSampleId :  
 P005-SS003-0612-01DL

Integration File signal 1: autoint1.e  
 Integration File signal 2: autoint2.e  
 Quant Time: Jun 01 03:41:32 2022  
 Quant Method : Z:\pestpcbsrv\HPCHEM1\ECD\_Q\Method\PQ052822.M  
 Quant Title : GC EXTRACTABLES  
 QLast Update : Sat May 28 06:33:00 2022  
 Response via : Initial Calibration  
 Integrator: ChemStation

Volume Inj. : 2 µl  
 Signal #1 Phase : ZB-MR1 Signal #2 Phase: ZB-MR2  
 Signal #1 Info : 30Mx0.32mmx 0.50µ Signal #2 Info : 30M x 0.32mm x 0.25µm

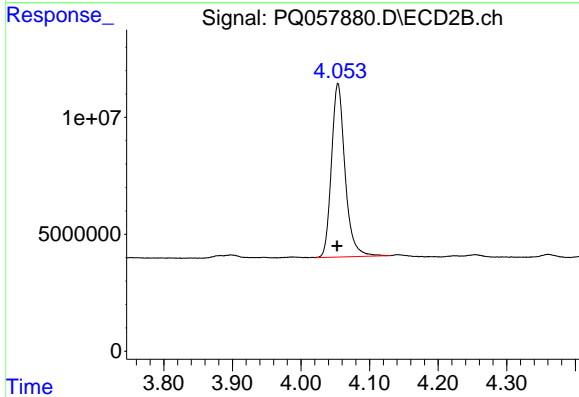




#1 Tetrachloro-m-xylene

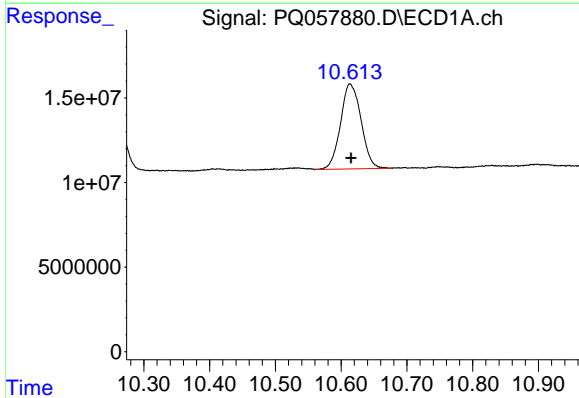
R.T.: 4.689 min  
 Delta R.T.: 0.000 min  
 Response: 116980177  
 Conc: 8.11 ng/ml

Instrument :  
 ECD\_Q  
 ClientSampleId :  
 P005-SS003-0612-01DL



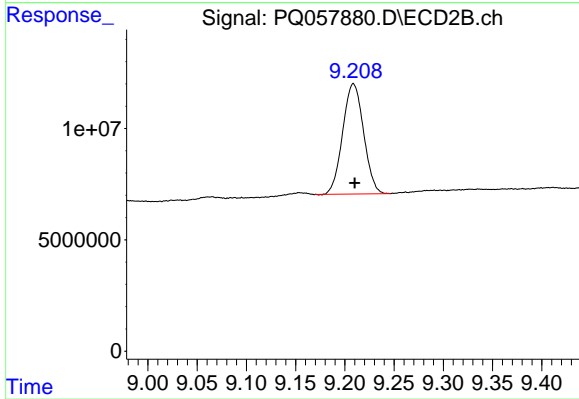
#1 Tetrachloro-m-xylene

R.T.: 4.054 min  
 Delta R.T.: 0.001 min  
 Response: 101974631  
 Conc: 8.97 ng/ml



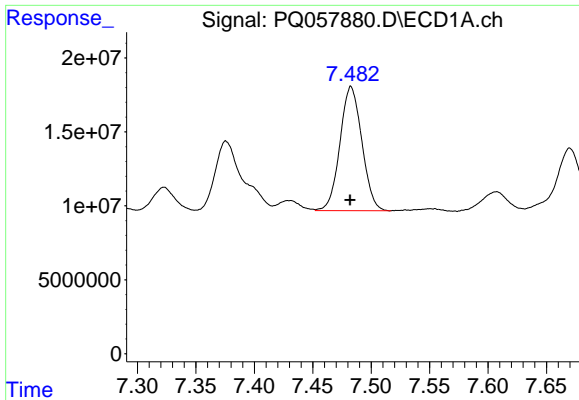
#2 Decachlorobiphenyl

R.T.: 10.613 min  
 Delta R.T.: -0.002 min  
 Response: 108851152  
 Conc: 8.68 ng/ml



#2 Decachlorobiphenyl

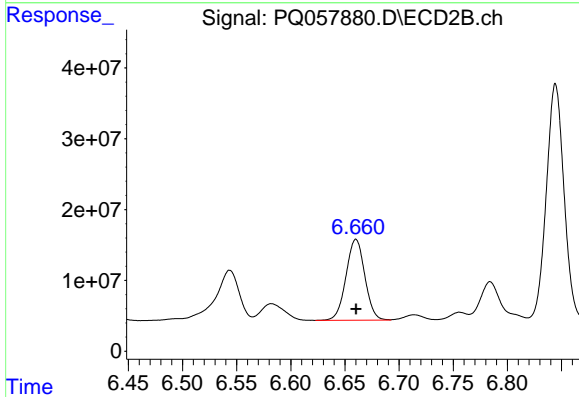
R.T.: 9.209 min  
 Delta R.T.: -0.001 min  
 Response: 73178774  
 Conc: 7.71 ng/ml



#31 AR-1260-1

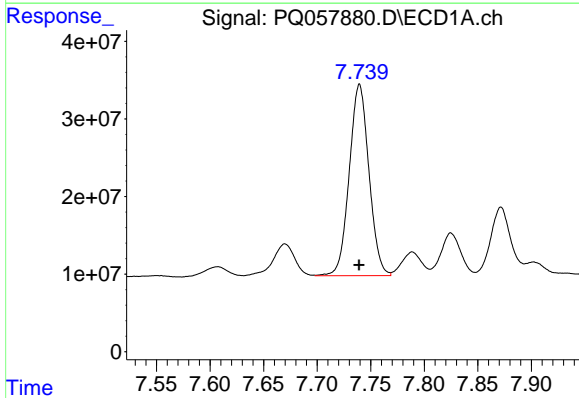
R.T.: 7.483 min  
 Delta R.T.: 0.000 min  
 Response: 109390107  
 Conc: 250.10 ng/ml

Instrument :  
 ECD\_Q  
 ClientSampleId :  
 P005-SS003-0612-01DL



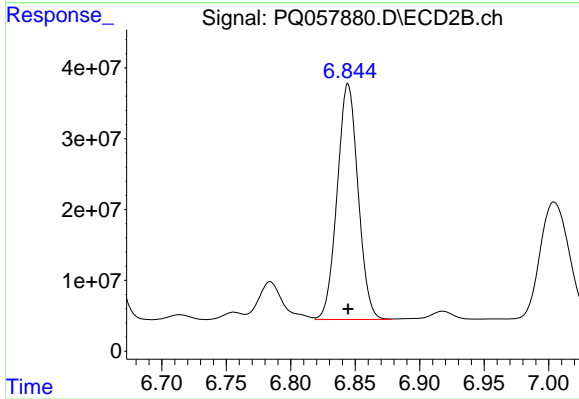
#31 AR-1260-1

R.T.: 6.660 min  
 Delta R.T.: 0.000 min  
 Response: 138384266  
 Conc: 266.35 ng/ml



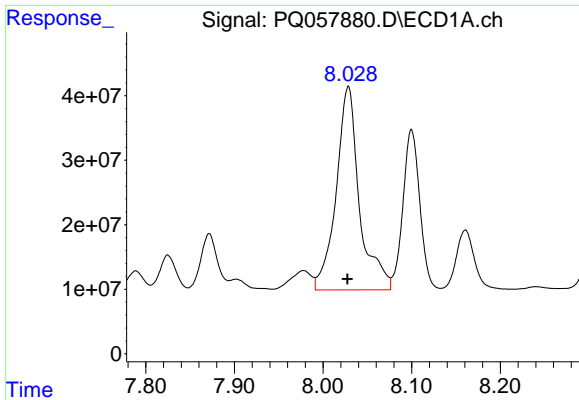
#32 AR-1260-2

R.T.: 7.739 min  
 Delta R.T.: 0.000 min  
 Response: 316317344  
 Conc: 570.86 ng/ml



#32 AR-1260-2

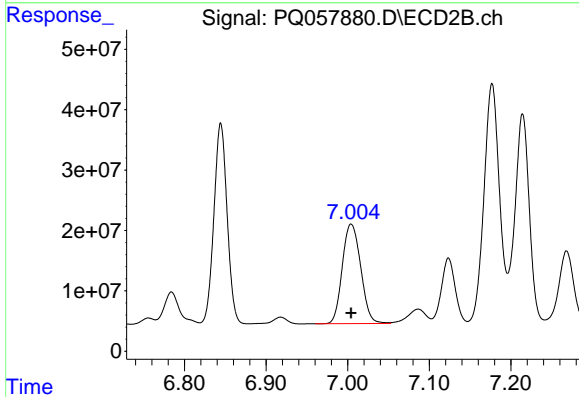
R.T.: 6.844 min  
 Delta R.T.: 0.000 min  
 Response: 375776402  
 Conc: 602.57 ng/ml



#33 AR-1260-3

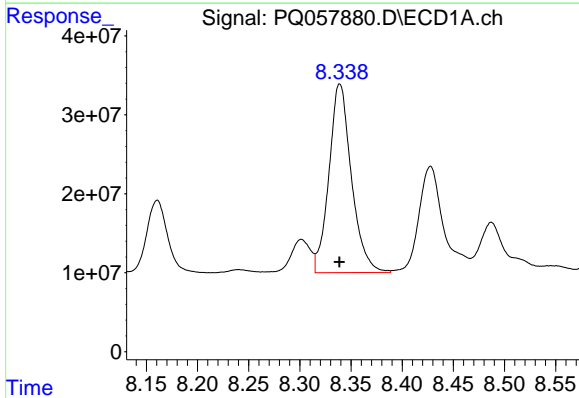
R.T.: 8.029 min  
 Delta R.T.: 0.001 min  
 Response: 575314499  
 Conc: 854.11 ng/ml

Instrument :  
 ECD\_Q  
 ClientSampleId :  
 P005-SS003-0612-01DL



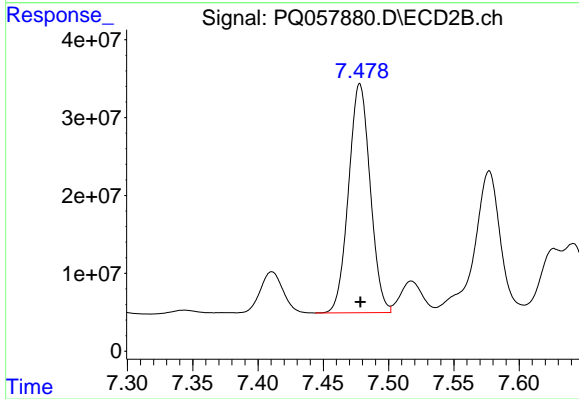
#33 AR-1260-3

R.T.: 7.004 min  
 Delta R.T.: 0.000 min  
 Response: 258314682  
 Conc: 396.58 ng/ml



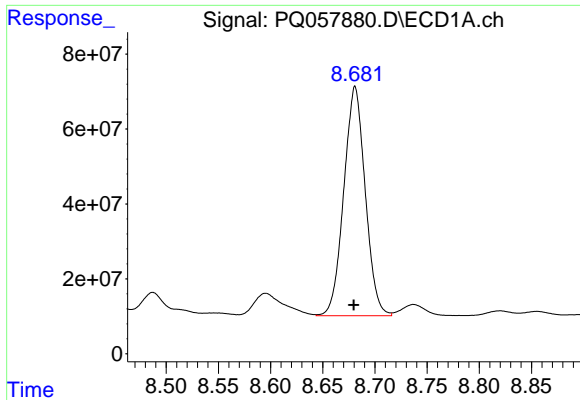
#34 AR-1260-4

R.T.: 8.339 min  
 Delta R.T.: 0.000 min  
 Response: 364867632  
 Conc: 731.21 ng/ml



#34 AR-1260-4

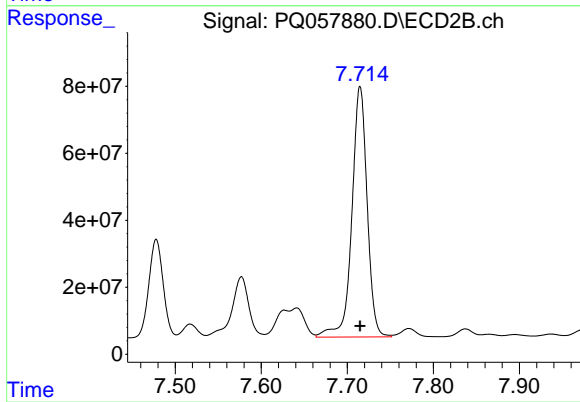
R.T.: 7.478 min  
 Delta R.T.: 0.000 min  
 Response: 338759797  
 Conc: 673.69 ng/ml



#35 AR-1260-5

R.T.: 8.681 min  
Delta R.T.: 0.001 min  
Response: 874965341  
Conc: 785.34 ng/ml

Instrument :  
ECD\_Q  
ClientSampleId :  
P005-SS003-0612-01DL



#35 AR-1260-5

R.T.: 7.715 min  
Delta R.T.: 0.000 min  
Response: 922911765  
Conc: 751.56 ng/ml