

Data Path : Z:\pestpcbsrv\HPCHEM1\ECD_Q\Data\PQ053124\
 Data File : PQ066776.D
 Signal(s) : Signal #1: ECD1A.ch Signal #2: ECD2B.ch
 Acq On : 31 May 2024 19:30
 Operator : YP\AJ
 Sample : AR1660ICC500
 Misc :
 ALS Vial : 5 Sample Multiplier: 1

Instrument :
 ECD_Q
 ClientSampleId :
 AR1660ICC500

Integration File signal 1: autoint1.e
 Integration File signal 2: autoint2.e
 Quant Time: Jun 01 01:11:38 2024
 Quant Method : Z:\pestpcbsrv\HPCHEM1\ECD_Q\Method\PQ053124.M
 Quant Title : GC EXTRACTABLES
 QLast Update : Sat Jun 01 01:05:07 2024
 Response via : Initial Calibration
 Integrator: ChemStation

Volume Inj. : 2 µl
 Signal #1 Phase : ZB-MR1 Signal #2 Phase: ZB-MR2
 Signal #1 Info : 30Mx0.32mmx 0.50µ Signal #2 Info : 30M x 0.32mm x 0.25µm

Compound	RT#1	RT#2	Resp#1	Resp#2	ng/ml	ng/ml

System Monitoring Compounds						
1) SA Tetrachlo...	3.448	2.827	283.8E6	293.4E6	50.000	50.000
2) SA Decachlor...	8.700	7.616	197.8E6	284.4E6	50.000	50.000
Target Compounds						
3) L1 AR-1016-1	4.557	3.836	86443776	100.9E6	500.000	500.000
4) L1 AR-1016-2	4.576	3.852	134.1E6	146.7E6	500.000	500.000
5) L1 AR-1016-3	4.635	4.013	81644739	81221501	500.000	500.000
6) L1 AR-1016-4	4.728	4.062	65684283	67817455	500.000	500.000
7) L1 AR-1016-5	5.017	4.259	65926150	84879586	500.000	500.000
31) L7 AR-1260-1	6.134	5.257	130.6E6	163.0E6	500.000	500.000
32) L7 AR-1260-2	6.398	5.447	155.0E6	193.3E6	500.000	500.000
33) L7 AR-1260-3	6.757	5.590	113.6E6	187.2E6	500.000	500.000
34) L7 AR-1260-4	6.977	6.053	124.8E6	156.1E6	500.000	500.000
35) L7 AR-1260-5	7.294	6.297	254.5E6	327.7E6	500.000	500.000

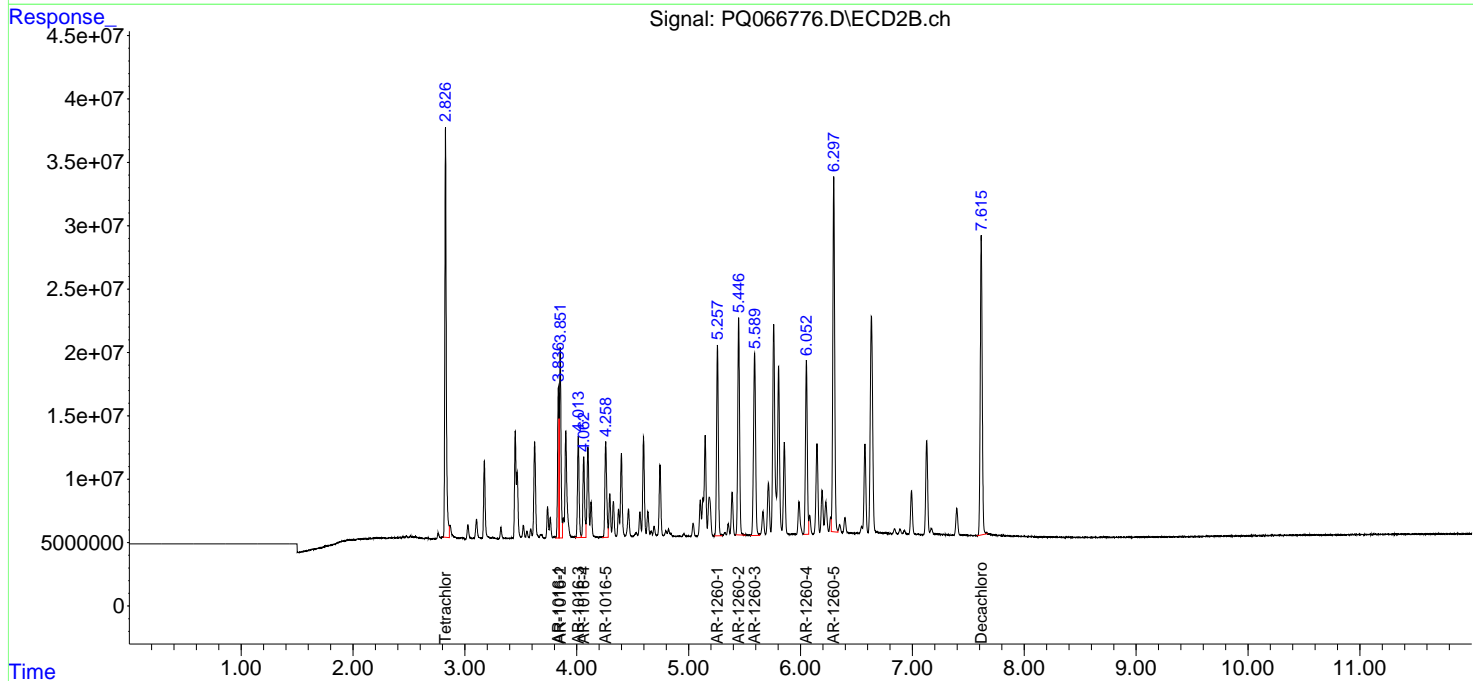
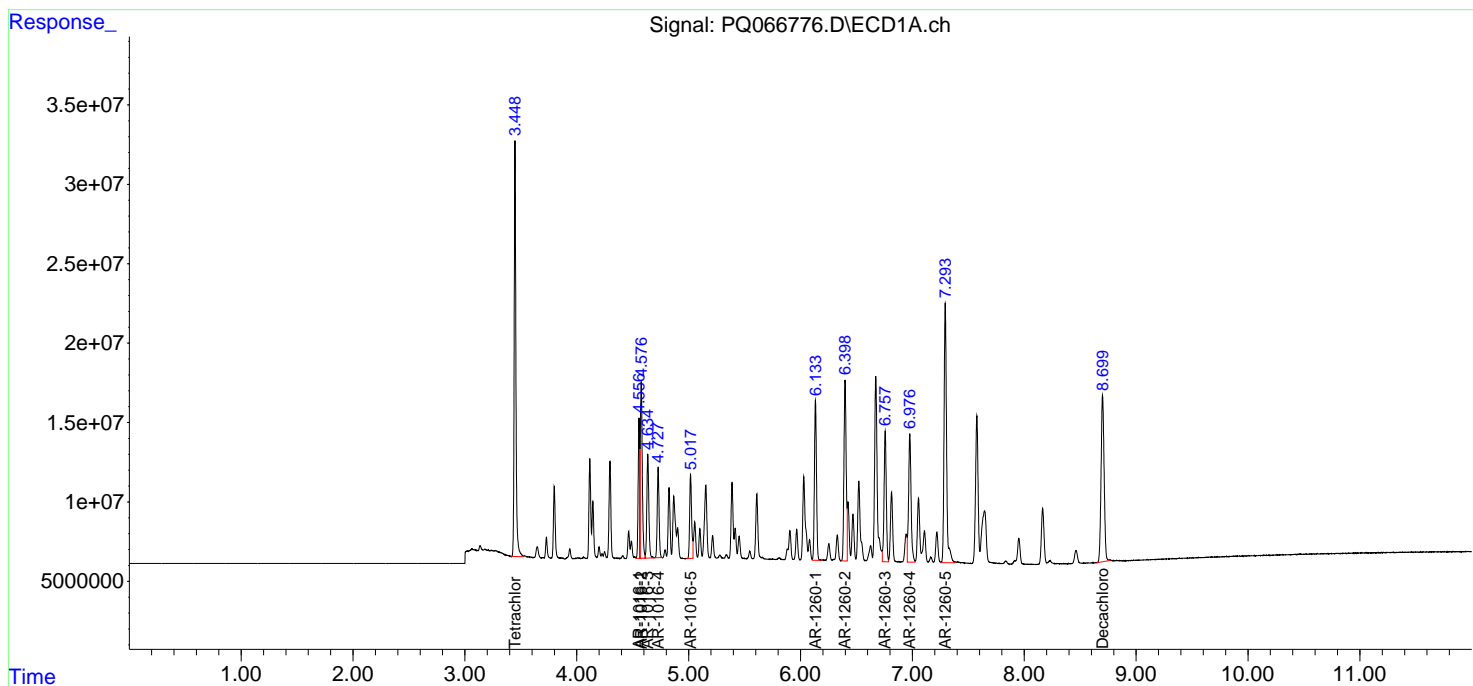
(f)=RT Delta > 1/2 Window (#)=Amounts differ by > 25% (m)=manual int.

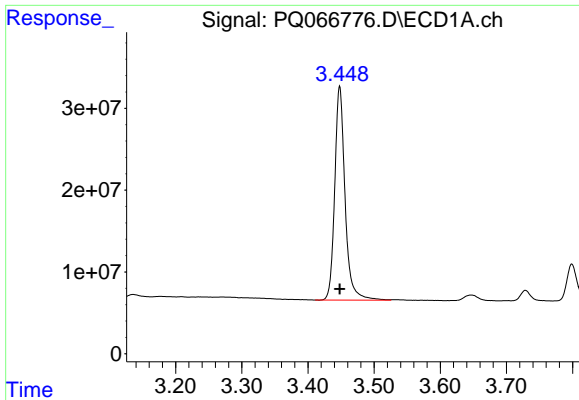
Data Path : Z:\pestpcbsrv\HPCHEM1\ECD_Q\Data\PQ053124\
 Data File : PQ066776.D
 Signal(s) : Signal #1: ECD1A.ch Signal #2: ECD2B.ch
 Acq On : 31 May 2024 19:30
 Operator : YP\AJ
 Sample : AR1660ICC500
 Misc :
 ALS Vial : 5 Sample Multiplier: 1

Instrument :
 ECD_Q
 ClientSampleId :
 AR1660ICC500

Integration File signal 1: autoint1.e
 Integration File signal 2: autoint2.e
 Quant Time: Jun 01 01:11:38 2024
 Quant Method : Z:\pestpcbsrv\HPCHEM1\ECD_Q\Method\PQ053124.M
 Quant Title : GC EXTRACTABLES
 QLast Update : Sat Jun 01 01:05:07 2024
 Response via : Initial Calibration
 Integrator: ChemStation

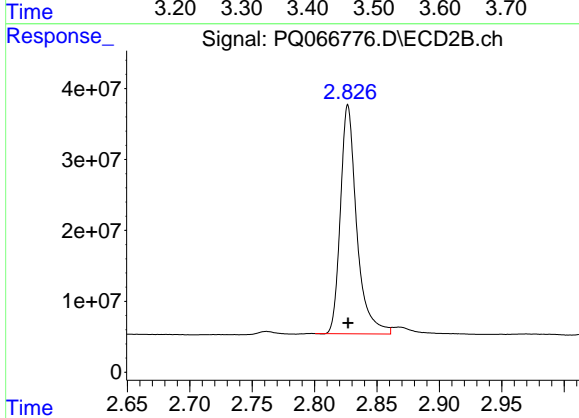
Volume Inj. : 2 µl
 Signal #1 Phase : ZB-MR1 Signal #2 Phase: ZB-MR2
 Signal #1 Info : 30Mx0.32mmx 0.50µ Signal #2 Info : 30M x 0.32mm x 0.25µm



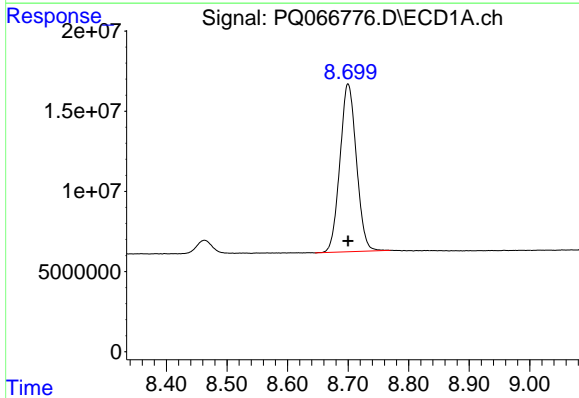


#1 Tetrachloro-m-xylene
 R.T.: 3.448 min
 Delta R.T.: 0.000 min
 Response: 283793275
 Conc: 50.00 ng/ml

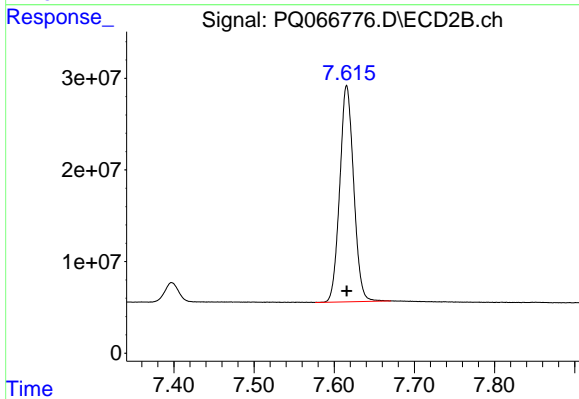
Instrument :
 ECD_Q
 ClientSampleId :
 AR1660ICC500



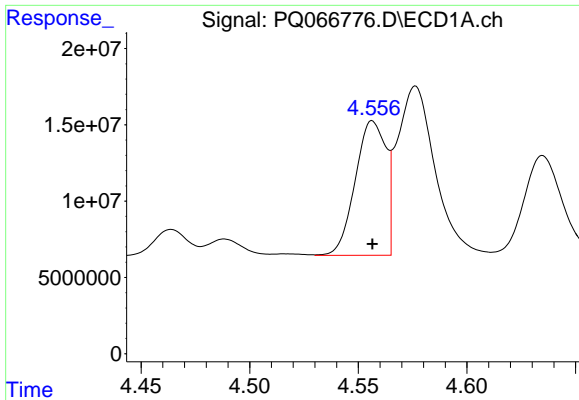
#1 Tetrachloro-m-xylene
 R.T.: 2.827 min
 Delta R.T.: 0.000 min
 Response: 293351075
 Conc: 50.00 ng/ml



#2 Decachlorobiphenyl
 R.T.: 8.700 min
 Delta R.T.: 0.000 min
 Response: 197820567
 Conc: 50.00 ng/ml



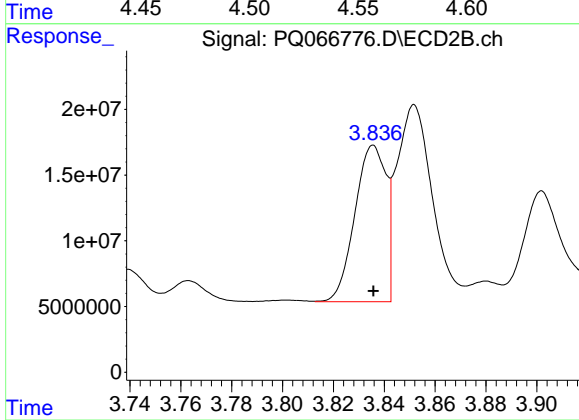
#2 Decachlorobiphenyl
 R.T.: 7.616 min
 Delta R.T.: 0.000 min
 Response: 284354544
 Conc: 50.00 ng/ml



#3 AR-1016-1

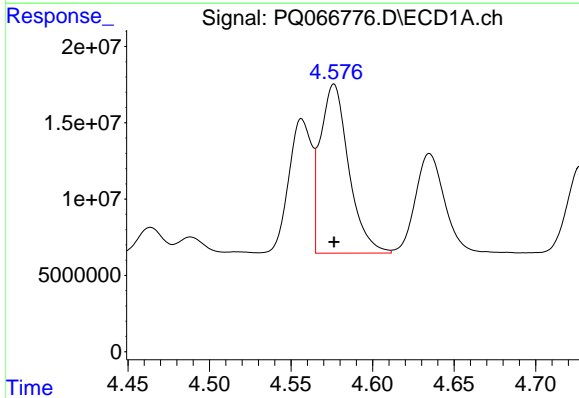
R.T.: 4.557 min
 Delta R.T.: 0.000 min
 Response: 86443776
 Conc: 500.00 ng/ml

Instrument :
 ECD_Q
 ClientSampleId :
 AR1660ICC500



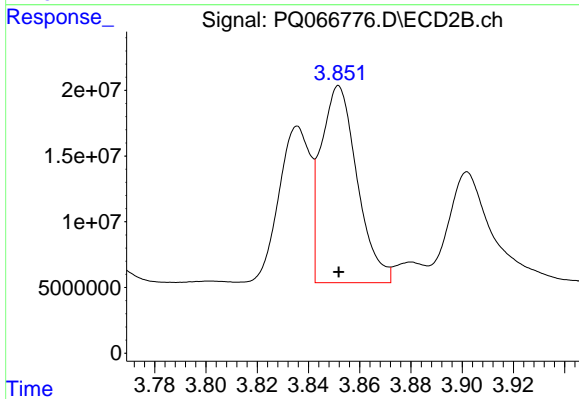
#3 AR-1016-1

R.T.: 3.836 min
 Delta R.T.: 0.000 min
 Response: 100923101
 Conc: 500.00 ng/ml



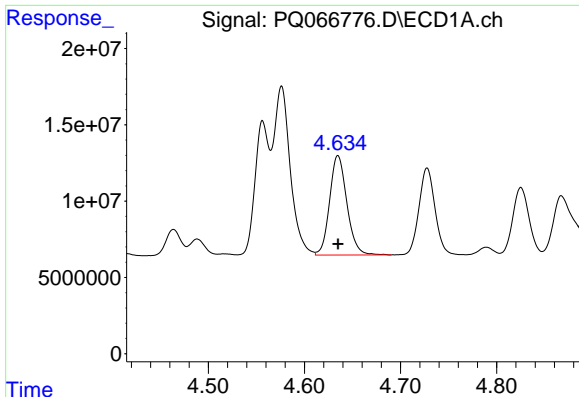
#4 AR-1016-2

R.T.: 4.576 min
 Delta R.T.: 0.000 min
 Response: 134074190
 Conc: 500.00 ng/ml



#4 AR-1016-2

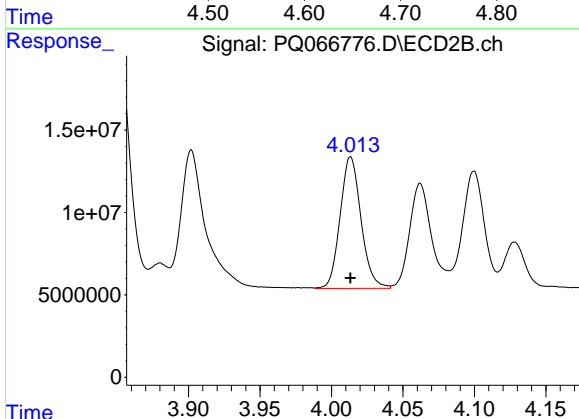
R.T.: 3.852 min
 Delta R.T.: 0.000 min
 Response: 146694082
 Conc: 500.00 ng/ml



#5 AR-1016-3

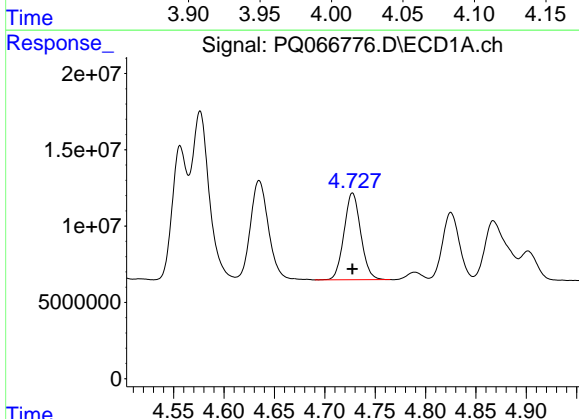
R.T.: 4.635 min
 Delta R.T.: 0.000 min
 Response: 81644739
 Conc: 500.00 ng/ml

Instrument :
 ECD_Q
 ClientSampleId :
 AR1660ICC500



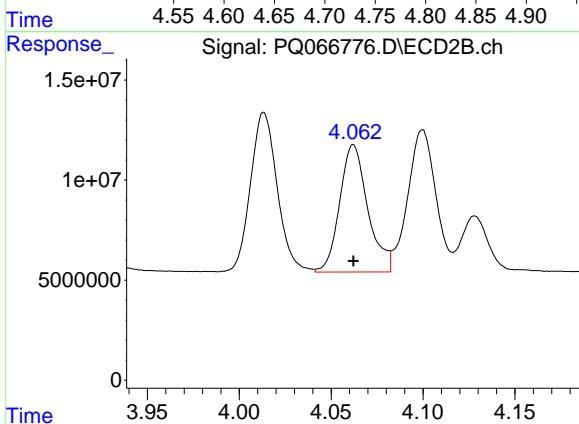
#5 AR-1016-3

R.T.: 4.013 min
 Delta R.T.: 0.000 min
 Response: 81221501
 Conc: 500.00 ng/ml



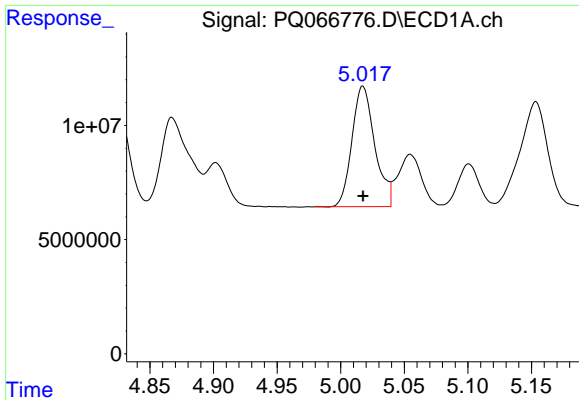
#6 AR-1016-4

R.T.: 4.728 min
 Delta R.T.: 0.000 min
 Response: 65684283
 Conc: 500.00 ng/ml



#6 AR-1016-4

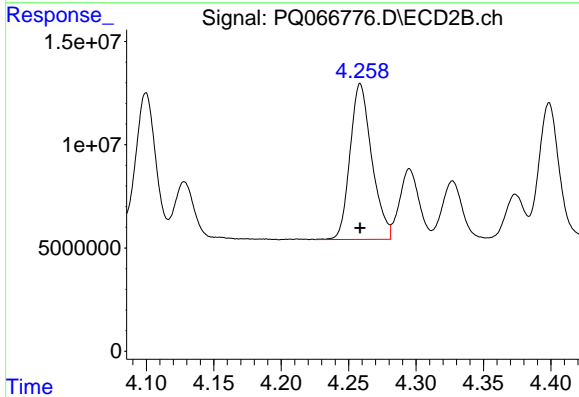
R.T.: 4.062 min
 Delta R.T.: 0.000 min
 Response: 67817455
 Conc: 500.00 ng/ml



#7 AR-1016-5

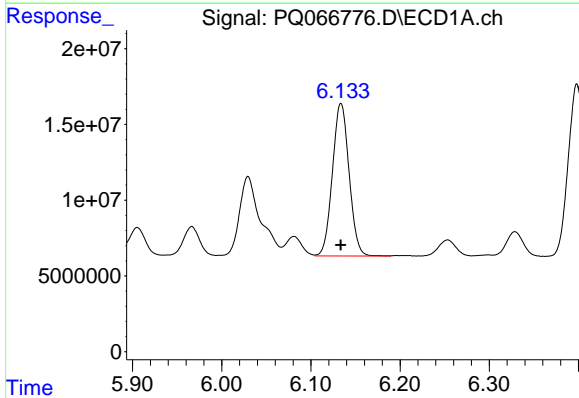
R.T.: 5.017 min
 Delta R.T.: 0.000 min
 Response: 65926150
 Conc: 500.00 ng/ml

Instrument :
 ECD_Q
 ClientSampleId :
 AR1660ICC500



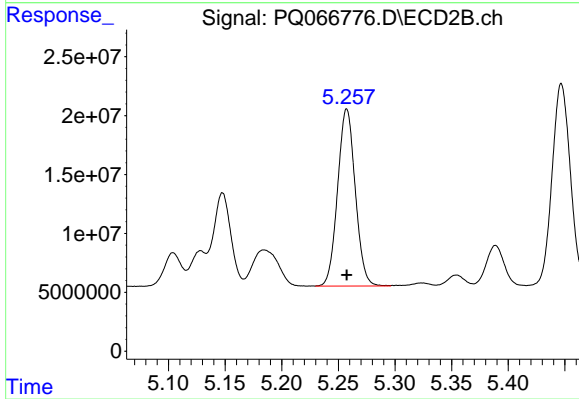
#7 AR-1016-5

R.T.: 4.259 min
 Delta R.T.: 0.000 min
 Response: 84879586
 Conc: 500.00 ng/ml



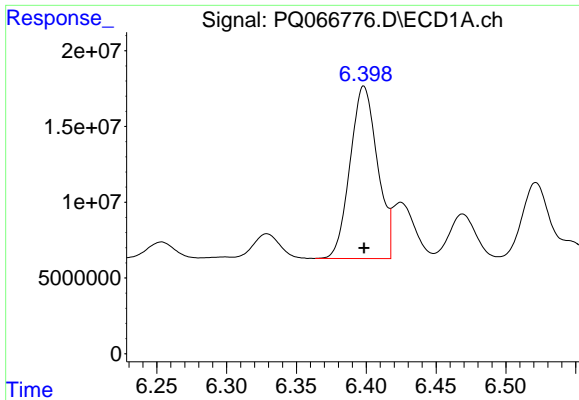
#31 AR-1260-1

R.T.: 6.134 min
 Delta R.T.: 0.000 min
 Response: 130606613
 Conc: 500.00 ng/ml



#31 AR-1260-1

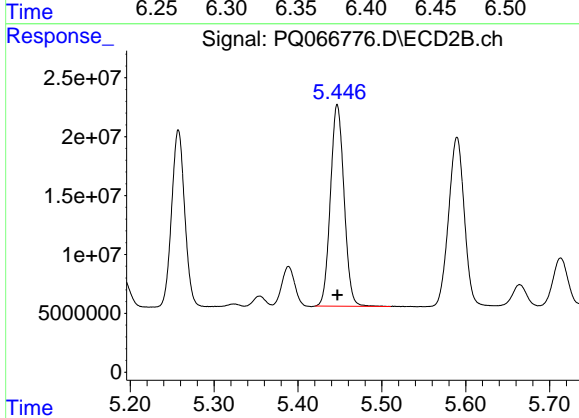
R.T.: 5.257 min
 Delta R.T.: 0.000 min
 Response: 163032356
 Conc: 500.00 ng/ml



#32 AR-1260-2

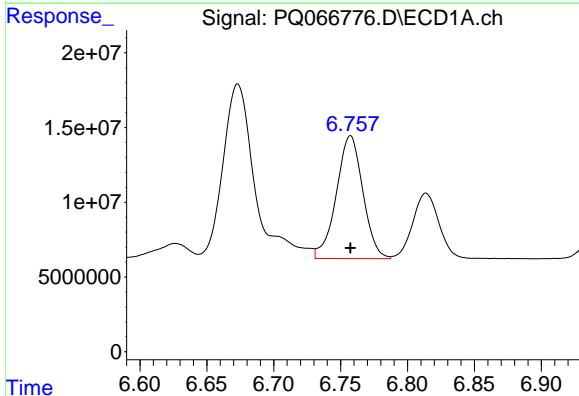
R.T.: 6.398 min
 Delta R.T.: 0.000 min
 Response: 154996410
 Conc: 500.00 ng/ml

Instrument :
 ECD_Q
 ClientSampleId :
 AR1660ICC500



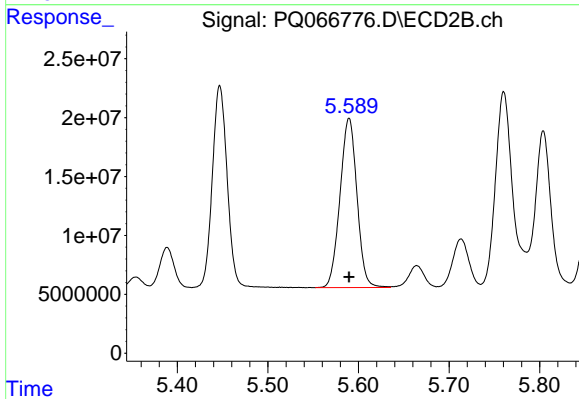
#32 AR-1260-2

R.T.: 5.447 min
 Delta R.T.: 0.000 min
 Response: 193290683
 Conc: 500.00 ng/ml



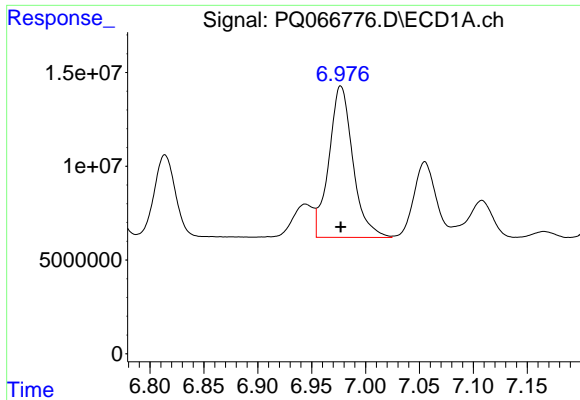
#33 AR-1260-3

R.T.: 6.757 min
 Delta R.T.: 0.000 min
 Response: 113552671
 Conc: 500.00 ng/ml



#33 AR-1260-3

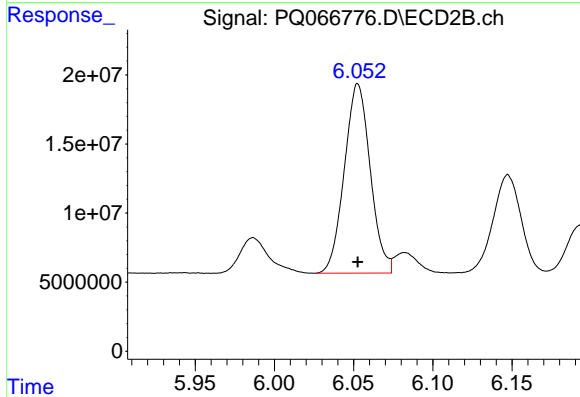
R.T.: 5.590 min
 Delta R.T.: 0.000 min
 Response: 187235647
 Conc: 500.00 ng/ml



#34 AR-1260-4

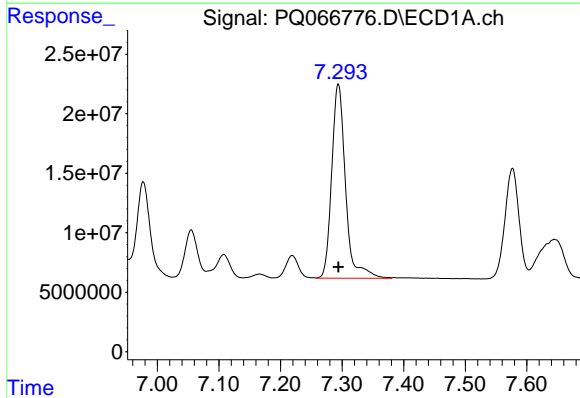
R.T.: 6.977 min
 Delta R.T.: 0.000 min
 Response: 124783016
 Conc: 500.00 ng/ml

Instrument :
 ECD_Q
 ClientSampleId :
 AR1660ICC500



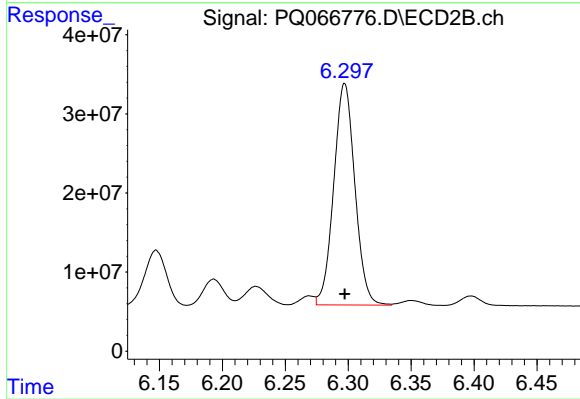
#34 AR-1260-4

R.T.: 6.053 min
 Delta R.T.: 0.000 min
 Response: 156059284
 Conc: 500.00 ng/ml



#35 AR-1260-5

R.T.: 7.294 min
 Delta R.T.: 0.000 min
 Response: 254489869
 Conc: 500.00 ng/ml



#35 AR-1260-5

R.T.: 6.297 min
 Delta R.T.: 0.000 min
 Response: 327704568
 Conc: 500.00 ng/ml