

Data Path : Z:\pestpcbsrv\HPCHEM1\ECD_Q\Data\PQ060122\
 Data File : PQ057904.D
 Signal(s) : Signal #1: ECD1A.ch Signal #2: ECD2B.ch
 Acq On : 01 Jun 2022 09:17
 Operator : YP\AJ
 Sample : AR1660CCC500
 Misc :
 ALS Vial : 3 Sample Multiplier: 1

Instrument :
 ECD_Q
 ClientSampleId :
 AR1660CCC500

Integration File signal 1: autoint1.e
 Integration File signal 2: autoint2.e
 Quant Time: Jun 02 04:03:38 2022
 Quant Method : Z:\pestpcbsrv\HPCHEM1\ECD_Q\Method\PQ052822.M
 Quant Title : GC EXTRACTABLES
 QLast Update : Sat May 28 06:33:00 2022
 Response via : Initial Calibration
 Integrator: ChemStation

Volume Inj. : 2 µl
 Signal #1 Phase : ZB-MR2 Signal #2 Phase: ZB-MR2
 Signal #1 Info : 30Mx0.32mmx 0.50µ Signal #2 Info : 30M x 0.32mm x 0.25µm

Compound	RT#1	RT#2	Resp#1	Resp#2	ng/ml	ng/ml
System Monitoring Compounds						
1) SA Tetrachlo...	4.691	4.054	644.4E6	620.6E6	44.648	54.617
2) SA Decachlor...	10.616	9.209	603.1E6	446.6E6	48.087	47.059
Target Compounds						
3) L1 AR-1016-1	5.876	5.161	172.8E6	205.6E6	448.808	540.994
4) L1 AR-1016-2	5.898	5.181	293.7E6	290.5E6	444.935	531.313
5) L1 AR-1016-3	5.960	5.361	185.2E6	151.7E6	443.297	549.192
6) L1 AR-1016-4	6.062	5.399	158.6E6	118.5E6	441.294	549.895
7) L1 AR-1016-5	6.356	5.619	129.3E6	165.4E6	451.842	585.356 #
31) L7 AR-1260-1	7.483	6.659	202.2E6	260.8E6	462.355	501.993
32) L7 AR-1260-2	7.741	6.844	241.0E6	316.5E6	434.922	507.512
33) L7 AR-1260-3	8.028	7.003	316.1E6	299.4E6	469.292	459.603
34) L7 AR-1260-4	8.340	7.477	233.6E6	241.6E6	468.180	480.537
35) L7 AR-1260-5	8.682	7.714	514.7E6	587.0E6	461.962	478.049

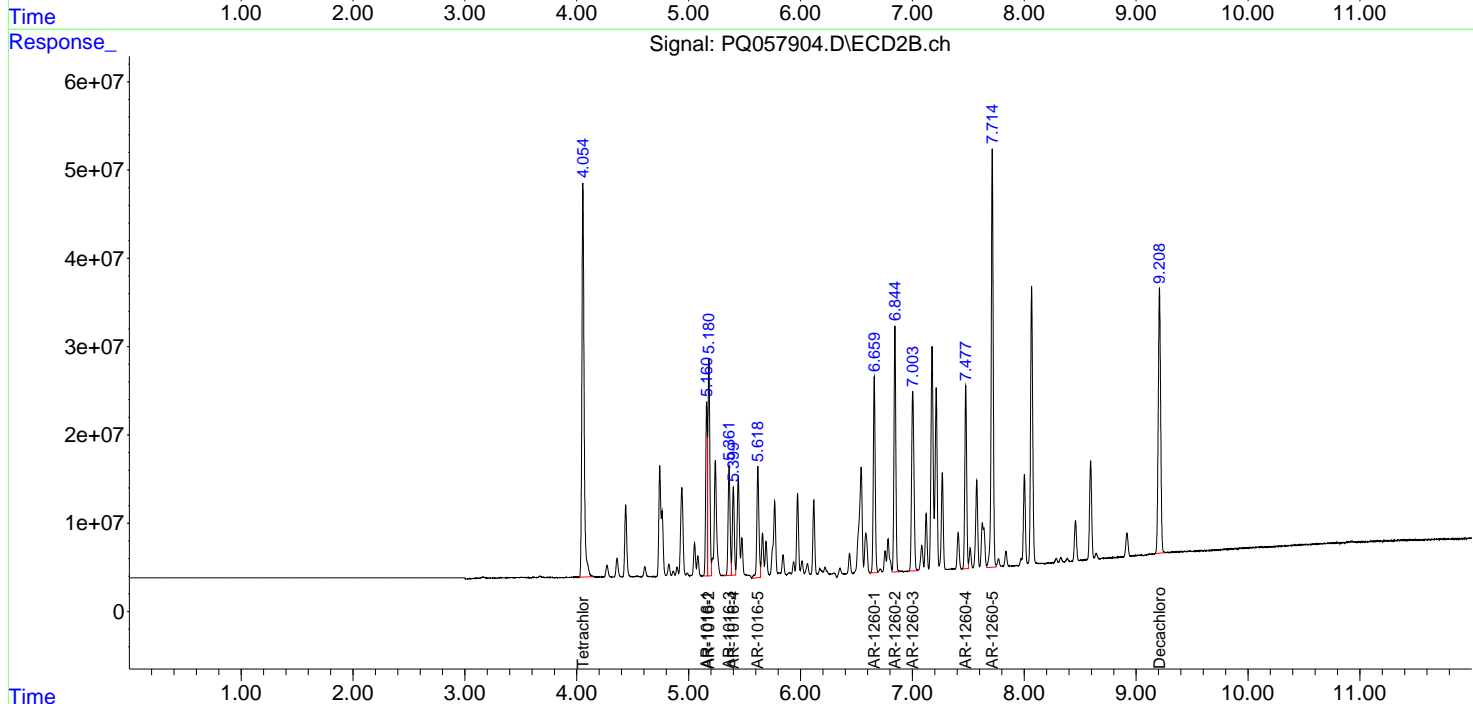
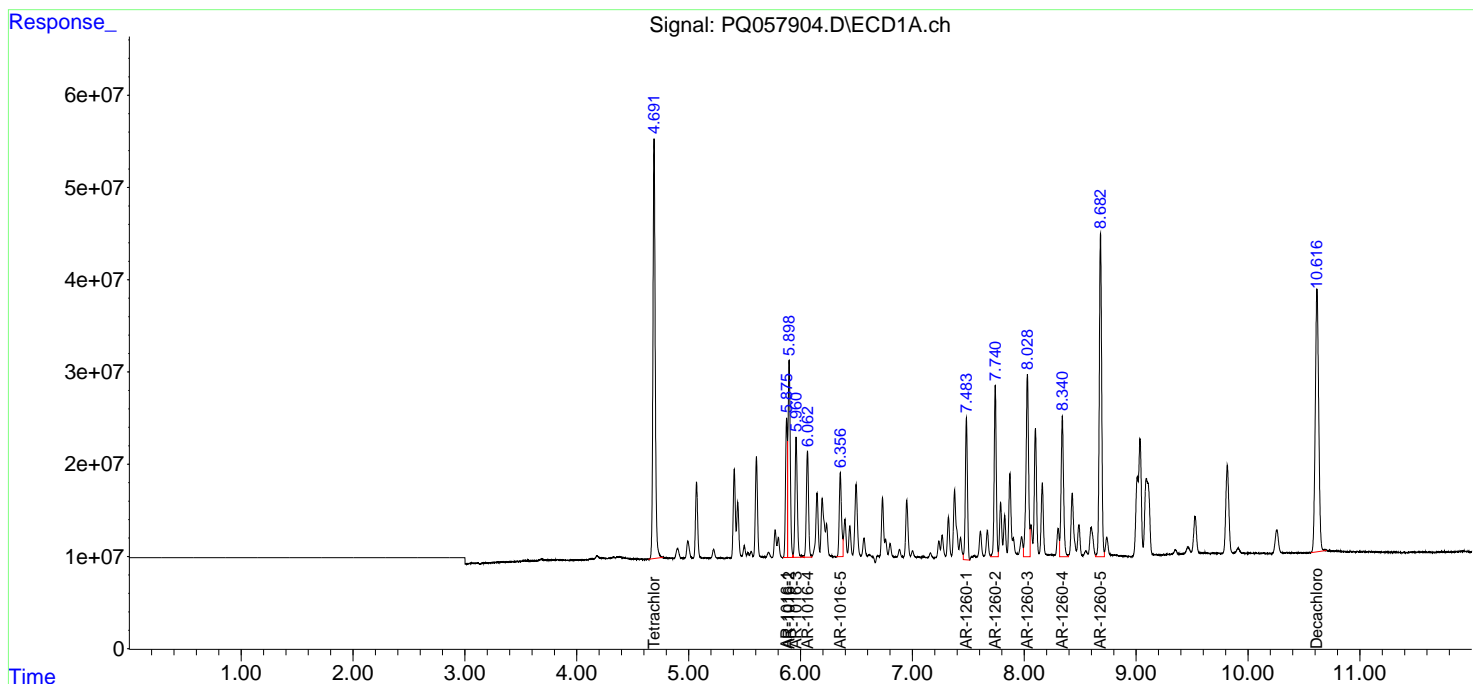
(f)=RT Delta > 1/2 Window (#)=Amounts differ by > 25% (m)=manual int.

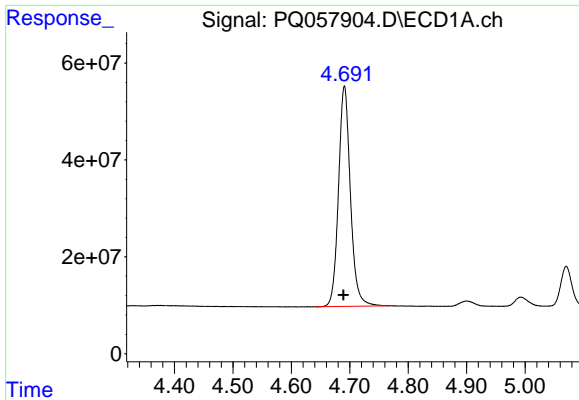
Data Path : Z:\pestpcbsrv\HPCHEM1\ECD_Q\Data\PQ060122\
 Data File : PQ057904.D
 Signal(s) : Signal #1: ECD1A.ch Signal #2: ECD2B.ch
 Acq On : 01 Jun 2022 09:17
 Operator : YP\AJ
 Sample : AR1660CCC500
 Misc :
 ALS Vial : 3 Sample Multiplier: 1

Instrument :
 ECD_Q
 ClientSampleId :
 AR1660CCC500

Integration File signal 1: autoint1.e
 Integration File signal 2: autoint2.e
 Quant Time: Jun 02 04:03:38 2022
 Quant Method : Z:\pestpcbsrv\HPCHEM1\ECD_Q\Method\PQ052822.M
 Quant Title : GC EXTRACTABLES
 QLast Update : Sat May 28 06:33:00 2022
 Response via : Initial Calibration
 Integrator: ChemStation

Volume Inj. : 2 µl
 Signal #1 Phase : ZB-MR1 Signal #2 Phase: ZB-MR2
 Signal #1 Info : 30Mx0.32mmx 0.50µ Signal #2 Info : 30M x 0.32mm x 0.25µm

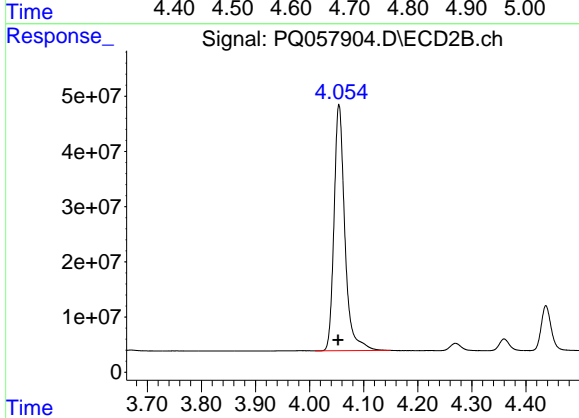




#1 Tetrachloro-m-xylene

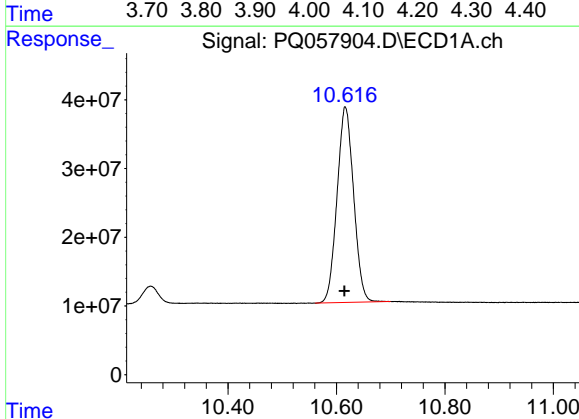
R.T.: 4.691 min
 Delta R.T.: 0.002 min
 Response: 644359552
 Conc: 44.65 ng/ml

Instrument :
 ECD_Q
 ClientSampleId :
 AR1660CCC500



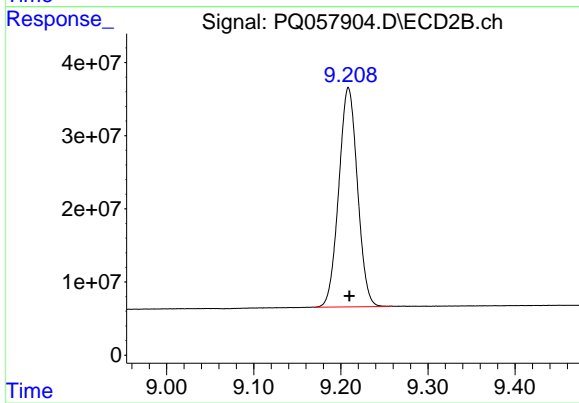
#1 Tetrachloro-m-xylene

R.T.: 4.054 min
 Delta R.T.: 0.002 min
 Response: 620607518
 Conc: 54.62 ng/ml



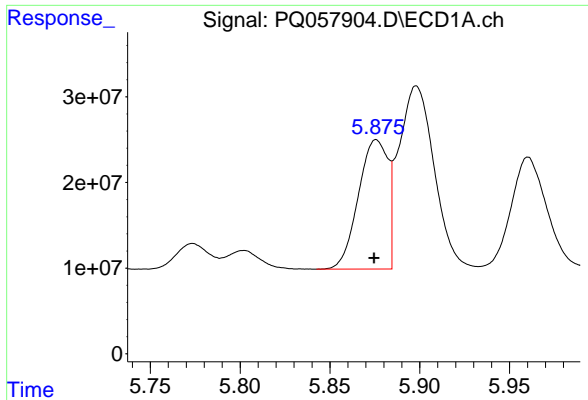
#2 Decachlorobiphenyl

R.T.: 10.616 min
 Delta R.T.: 0.001 min
 Response: 603086198
 Conc: 48.09 ng/ml



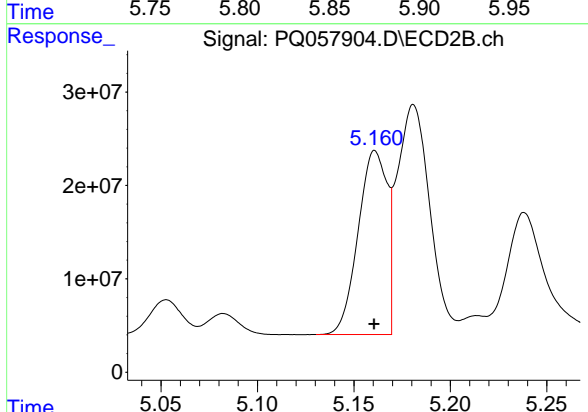
#2 Decachlorobiphenyl

R.T.: 9.209 min
 Delta R.T.: -0.001 min
 Response: 446588376
 Conc: 47.06 ng/ml

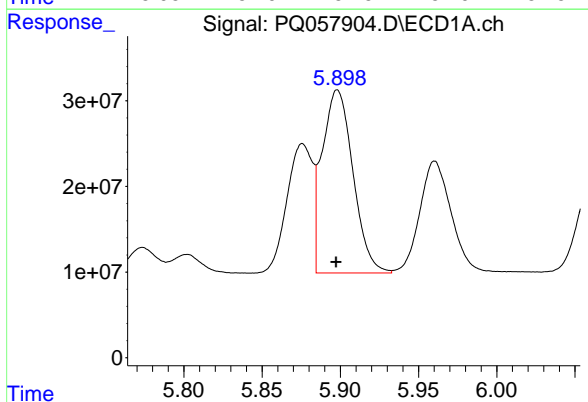


#3 AR-1016-1
 R.T.: 5.876 min
 Delta R.T.: 0.001 min
 Response: 172849709
 Conc: 448.81 ng/ml

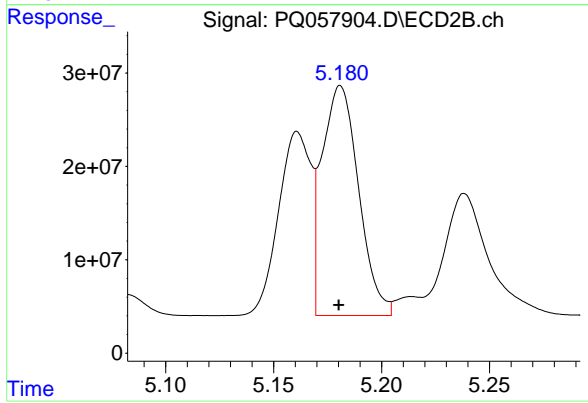
Instrument :
 ECD_Q
 ClientSampleId :
 AR1660CCC500



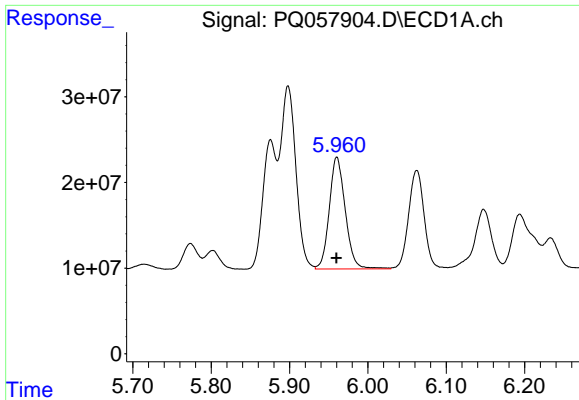
#3 AR-1016-1
 R.T.: 5.161 min
 Delta R.T.: 0.000 min
 Response: 205602664
 Conc: 540.99 ng/ml



#4 AR-1016-2
 R.T.: 5.898 min
 Delta R.T.: 0.000 min
 Response: 293735423
 Conc: 444.93 ng/ml



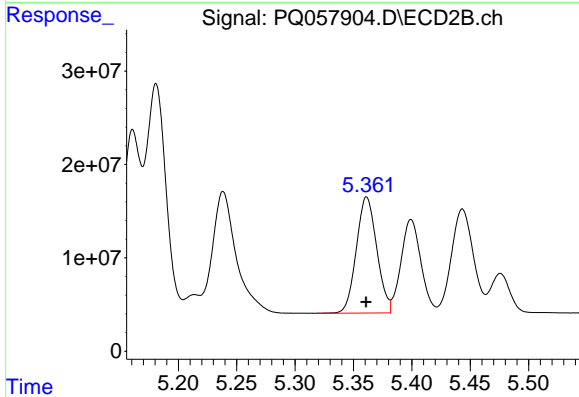
#4 AR-1016-2
 R.T.: 5.181 min
 Delta R.T.: 0.000 min
 Response: 290544440
 Conc: 531.31 ng/ml



#5 AR-1016-3

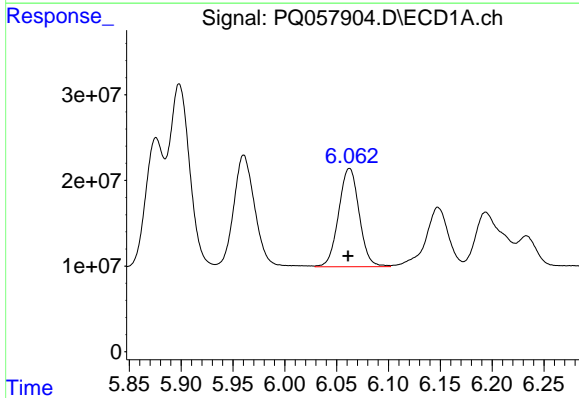
R.T.: 5.960 min
 Delta R.T.: 0.000 min
 Response: 185202162
 Conc: 443.30 ng/ml

Instrument :
 ECD_Q
 ClientSampleId :
 AR1660CCC500



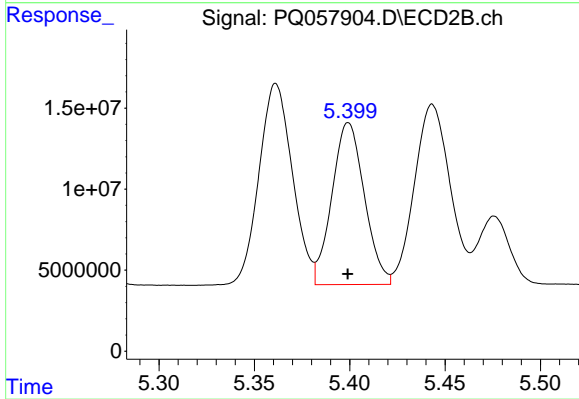
#5 AR-1016-3

R.T.: 5.361 min
 Delta R.T.: 0.000 min
 Response: 151665126
 Conc: 549.19 ng/ml



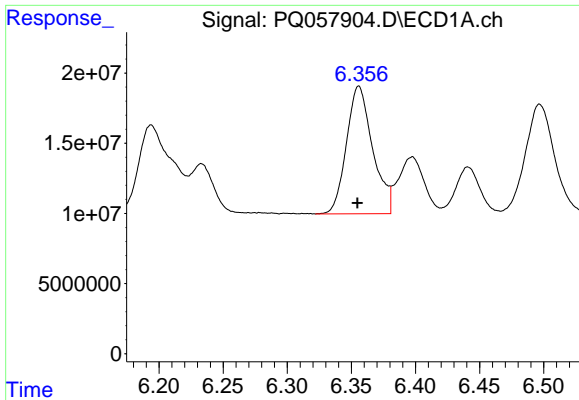
#6 AR-1016-4

R.T.: 6.062 min
 Delta R.T.: 0.001 min
 Response: 158565691
 Conc: 441.29 ng/ml



#6 AR-1016-4

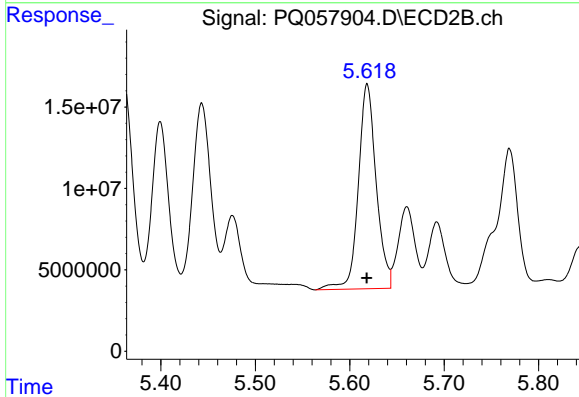
R.T.: 5.399 min
 Delta R.T.: 0.000 min
 Response: 118469151
 Conc: 549.90 ng/ml



#7 AR-1016-5

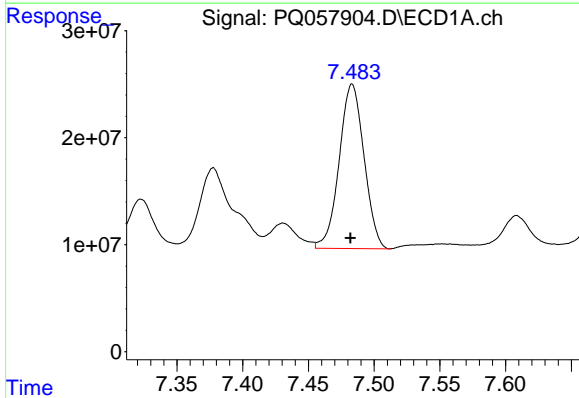
R.T.: 6.356 min
 Delta R.T.: 0.000 min
 Response: 129290153
 Conc: 451.84 ng/ml

Instrument :
 ECD_Q
 ClientSampleId :
 AR1660CCC500



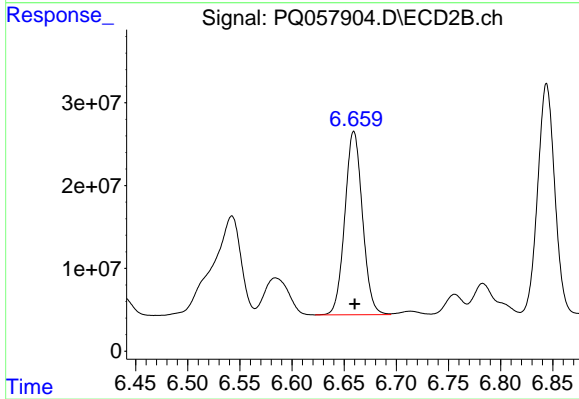
#7 AR-1016-5

R.T.: 5.619 min
 Delta R.T.: 0.000 min
 Response: 165424867
 Conc: 585.36 ng/ml



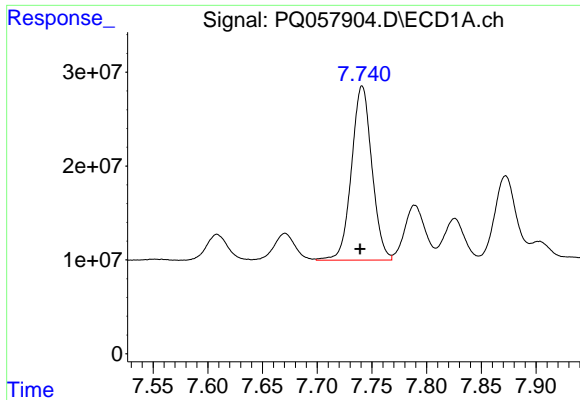
#31 AR-1260-1

R.T.: 7.483 min
 Delta R.T.: 0.001 min
 Response: 202228362
 Conc: 462.35 ng/ml



#31 AR-1260-1

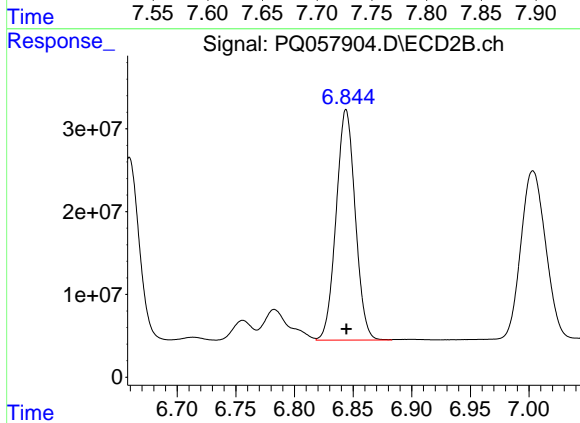
R.T.: 6.659 min
 Delta R.T.: 0.000 min
 Response: 260811149
 Conc: 501.99 ng/ml



#32 AR-1260-2

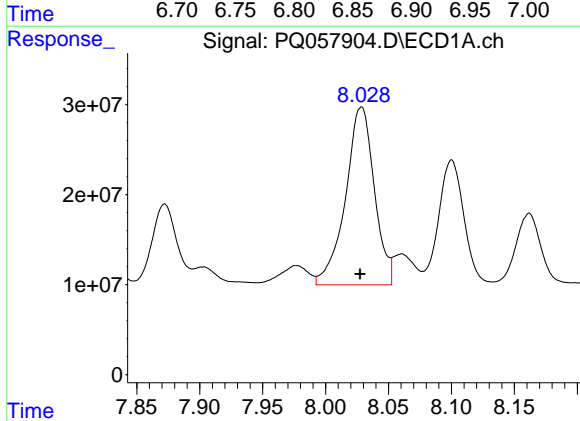
R.T.: 7.741 min
 Delta R.T.: 0.002 min
 Response: 240991683
 Conc: 434.92 ng/ml

Instrument :
 ECD_Q
 ClientSampleId :
 AR1660CCC500



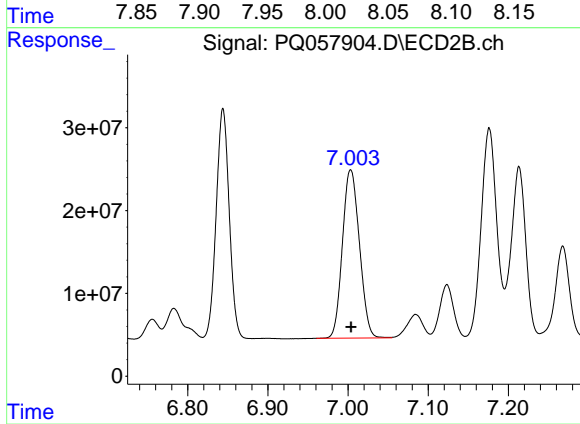
#32 AR-1260-2

R.T.: 6.844 min
 Delta R.T.: 0.000 min
 Response: 316497191
 Conc: 507.51 ng/ml



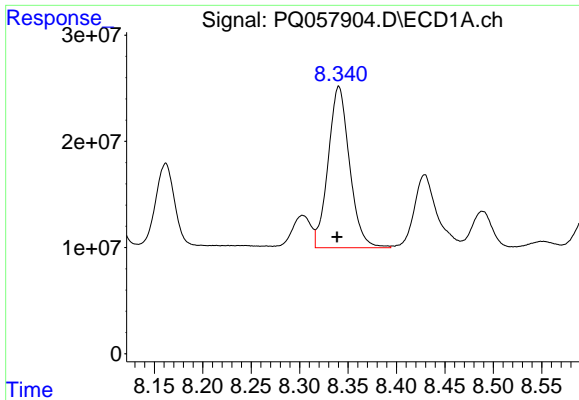
#33 AR-1260-3

R.T.: 8.028 min
 Delta R.T.: 0.000 min
 Response: 316108245
 Conc: 469.29 ng/ml



#33 AR-1260-3

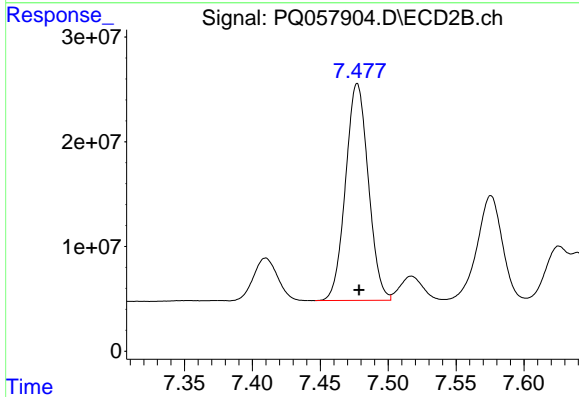
R.T.: 7.003 min
 Delta R.T.: 0.000 min
 Response: 299363261
 Conc: 459.60 ng/ml



#34 AR-1260-4

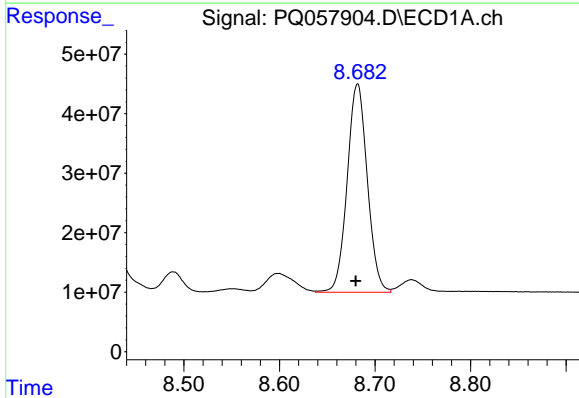
R.T.: 8.340 min
 Delta R.T.: 0.002 min
 Response: 233619073
 Conc: 468.18 ng/ml

Instrument :
 ECD_Q
 ClientSampleId :
 AR1660CCC500



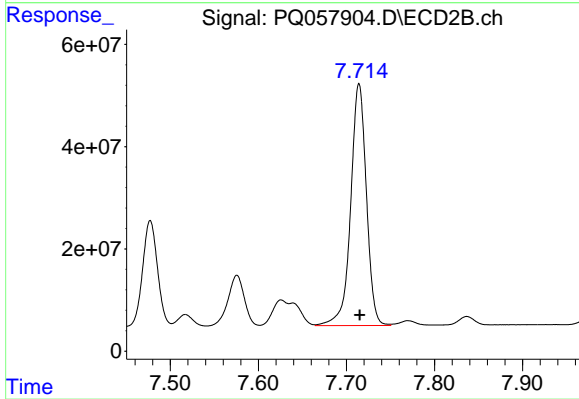
#34 AR-1260-4

R.T.: 7.477 min
 Delta R.T.: -0.001 min
 Response: 241632671
 Conc: 480.54 ng/ml



#35 AR-1260-5

R.T.: 8.682 min
 Delta R.T.: 0.002 min
 Response: 514683813
 Conc: 461.96 ng/ml



#35 AR-1260-5

R.T.: 7.714 min
 Delta R.T.: 0.000 min
 Response: 587045288
 Conc: 478.05 ng/ml