

Data Path : Z:\pestpcbsrv\HPCHEM1\ECD\_Q\Data\PQ060122\  
 Data File : PQ057920.D  
 Signal(s) : Signal #1: ECD1A.ch Signal #2: ECD2B.ch  
 Acq On : 01 Jun 2022 17:47  
 Operator : YP\AJ  
 Sample : AR1660CCC500  
 Misc :  
 ALS Vial : 3 Sample Multiplier: 1

Instrument :  
 ECD\_Q  
 ClientSampleId :  
 AR1660CCC500

Integration File signal 1: autoint1.e  
 Integration File signal 2: autoint2.e  
 Quant Time: Jun 02 08:41:42 2022  
 Quant Method : Z:\pestpcbsrv\HPCHEM1\ECD\_Q\Method\PQ052822.M  
 Quant Title : GC EXTRACTABLES  
 QLast Update : Sat May 28 06:33:00 2022  
 Response via : Initial Calibration  
 Integrator: ChemStation

Volume Inj. : 2 µl  
 Signal #1 Phase : ZB-MR2 Signal #2 Phase: ZB-MR2  
 Signal #1 Info : 30Mx0.32mmx 0.50µ Signal #2 Info : 30M x 0.32mm x 0.25µm

Compound	RT#1	RT#2	Resp#1	Resp#2	ng/ml	ng/ml
-----						
System Monitoring Compounds						
1) SA Tetrachlo...	4.690	4.053	683.3E6	650.5E6	47.343	57.245
2) SA Decachlor...	10.613	9.205	623.6E6	462.7E6	49.722	48.757
Target Compounds						
3) L1 AR-1016-1	5.875	5.159	182.1E6	216.0E6	472.902	568.294
4) L1 AR-1016-2	5.897	5.180	313.5E6	307.1E6	474.830	561.672
5) L1 AR-1016-3	5.960	5.360	196.6E6	159.8E6	470.524	578.699
6) L1 AR-1016-4	6.061	5.397	169.4E6	125.8E6	471.517	583.716
7) L1 AR-1016-5	6.354	5.617	138.3E6	165.0E6	483.431	583.810
31) L7 AR-1260-1	7.481	6.658	217.3E6	276.6E6	496.733	532.322
32) L7 AR-1260-2	7.739	6.843	259.2E6	334.3E6	467.718	536.101
33) L7 AR-1260-3	8.025	7.001	331.3E6	318.3E6	491.857	488.602
34) L7 AR-1260-4	8.338	7.476	242.9E6	254.5E6	486.735	506.101
35) L7 AR-1260-5	8.679	7.713	531.6E6	613.4E6	477.183	499.516

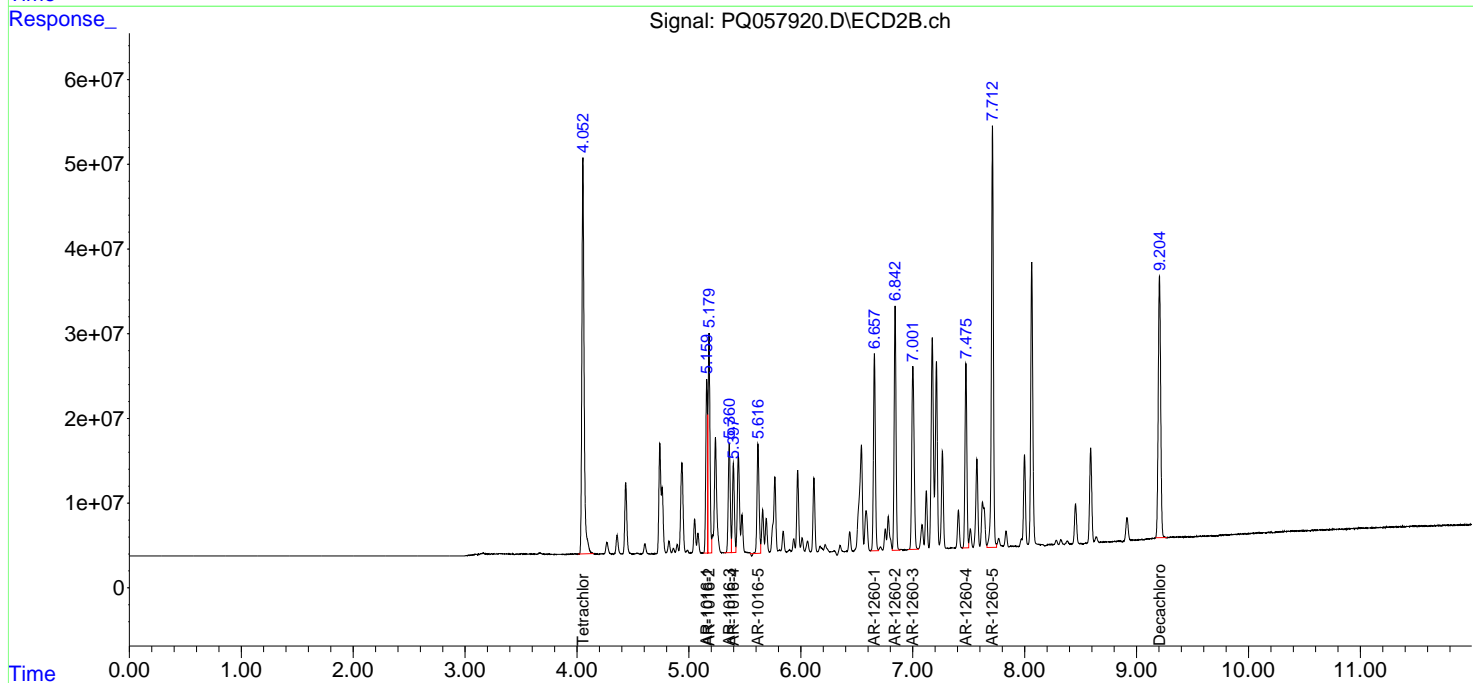
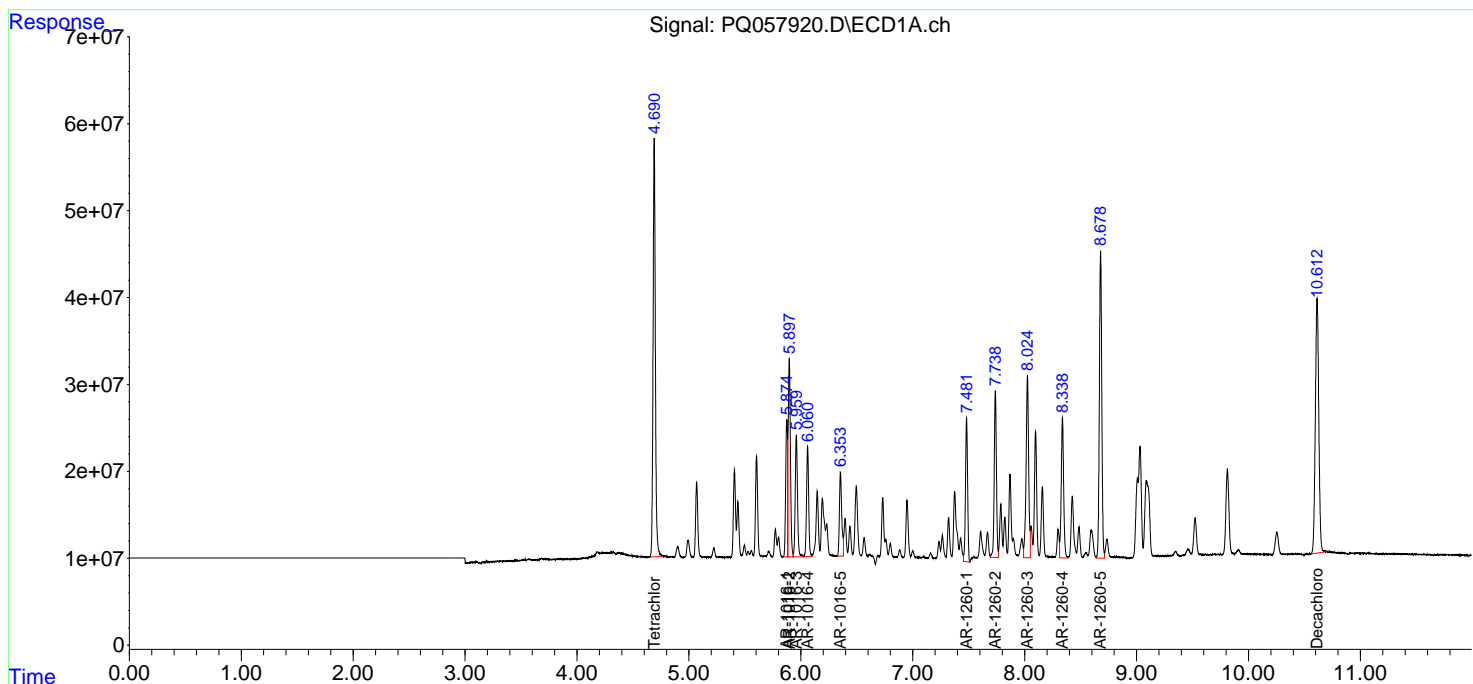
(f)=RT Delta > 1/2 Window (#)=Amounts differ by > 25% (m)=manual int.

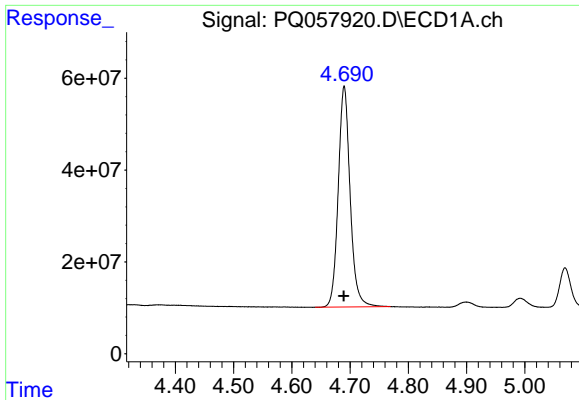
Data Path : Z:\pestpcbsrv\HPCHEM1\ECD\_Q\Data\PQ060122\  
 Data File : PQ057920.D  
 Signal(s) : Signal #1: ECD1A.ch Signal #2: ECD2B.ch  
 Acq On : 01 Jun 2022 17:47  
 Operator : YP\AJ  
 Sample : AR1660CCC500  
 Misc :  
 ALS Vial : 3 Sample Multiplier: 1

Instrument :  
 ECD\_Q  
 ClientSampleId :  
 AR1660CCC500

Integration File signal 1: autoint1.e  
 Integration File signal 2: autoint2.e  
 Quant Time: Jun 02 08:41:42 2022  
 Quant Method : Z:\pestpcbsrv\HPCHEM1\ECD\_Q\Method\PQ052822.M  
 Quant Title : GC EXTRACTABLES  
 QLast Update : Sat May 28 06:33:00 2022  
 Response via : Initial Calibration  
 Integrator: ChemStation

Volume Inj. : 2 µl  
 Signal #1 Phase : ZB-MR1 Signal #2 Phase: ZB-MR2  
 Signal #1 Info : 30Mx0.32mmx 0.50µ Signal #2 Info : 30M x 0.32mm x 0.25µm

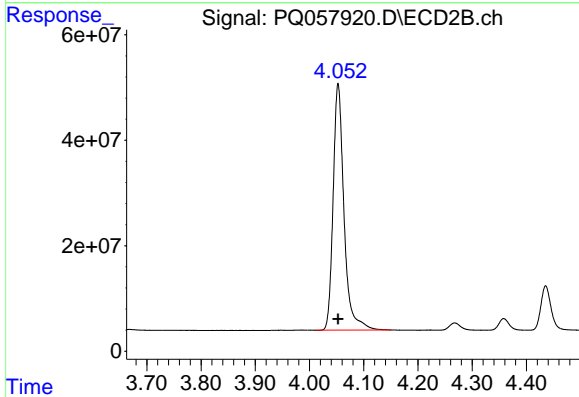




#1 Tetrachloro-m-xylene

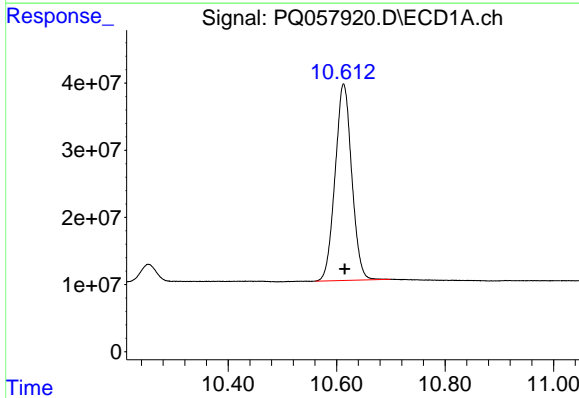
R.T.: 4.690 min  
Delta R.T.: 0.000 min  
Response: 683259224  
Conc: 47.34 ng/ml

Instrument :  
ECD\_Q  
ClientSampleId :  
AR1660CCC500



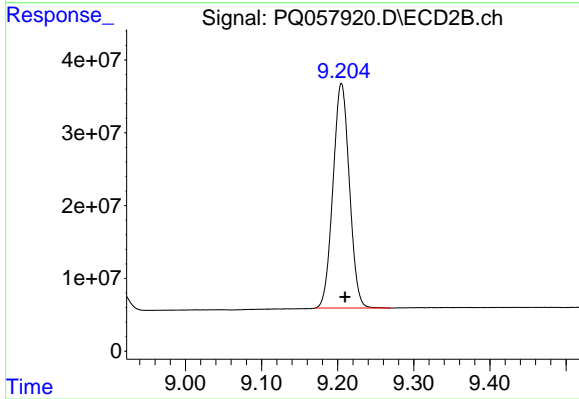
#1 Tetrachloro-m-xylene

R.T.: 4.053 min  
Delta R.T.: 0.000 min  
Response: 650473830  
Conc: 57.24 ng/ml



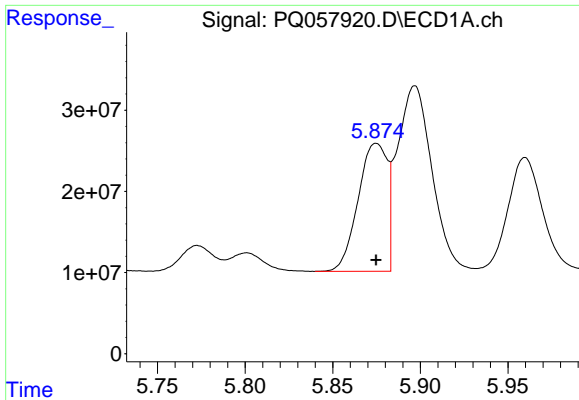
#2 Decachlorobiphenyl

R.T.: 10.613 min  
Delta R.T.: -0.002 min  
Response: 623602971  
Conc: 49.72 ng/ml



#2 Decachlorobiphenyl

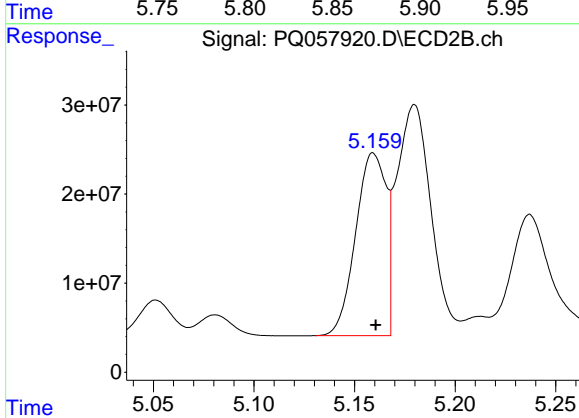
R.T.: 9.205 min  
Delta R.T.: -0.005 min  
Response: 462699192  
Conc: 48.76 ng/ml



#3 AR-1016-1

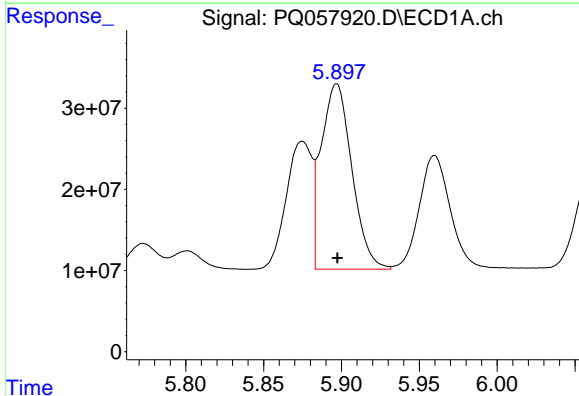
R.T.: 5.875 min  
 Delta R.T.: 0.000 min  
 Response: 182129093  
 Conc: 472.90 ng/ml

Instrument :  
 ECD\_Q  
 ClientSampleId :  
 AR1660CCC500



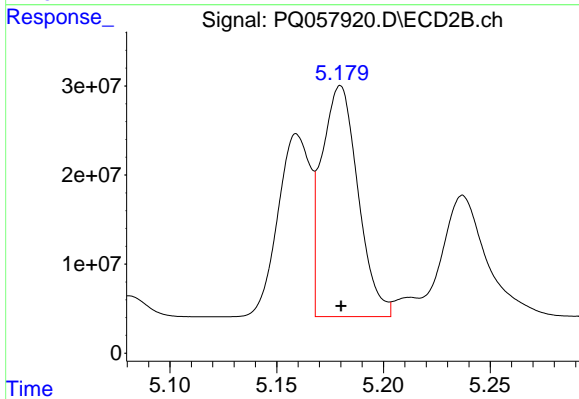
#3 AR-1016-1

R.T.: 5.159 min  
 Delta R.T.: -0.001 min  
 Response: 215977638  
 Conc: 568.29 ng/ml



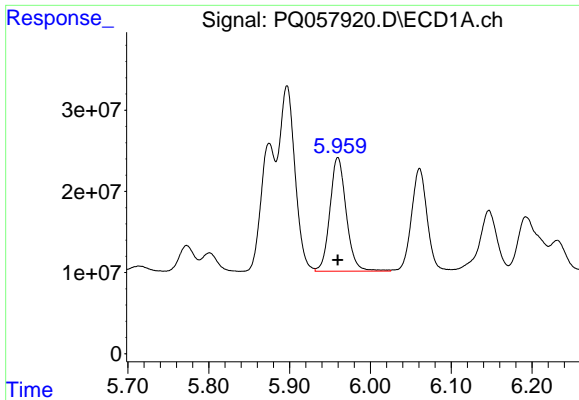
#4 AR-1016-2

R.T.: 5.897 min  
 Delta R.T.: 0.000 min  
 Response: 313471722  
 Conc: 474.83 ng/ml



#4 AR-1016-2

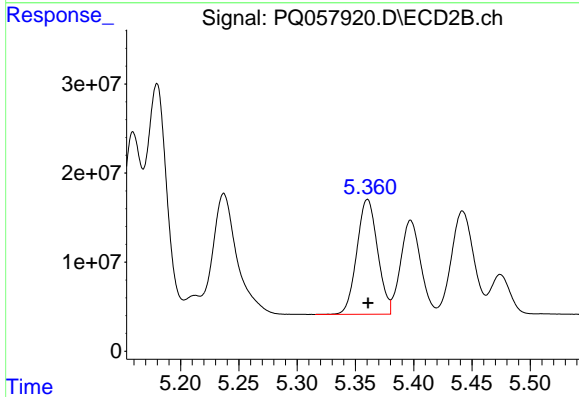
R.T.: 5.180 min  
 Delta R.T.: 0.000 min  
 Response: 307146195  
 Conc: 561.67 ng/ml



#5 AR-1016-3

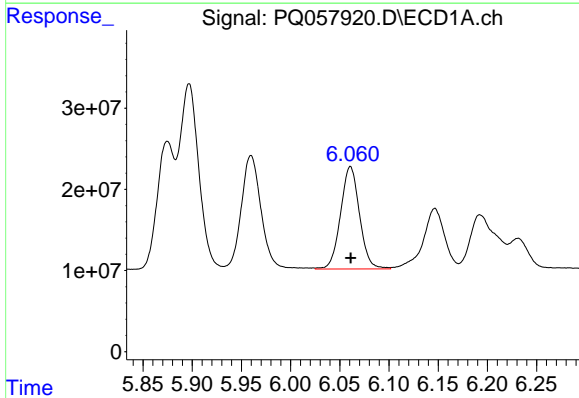
R.T.: 5.960 min  
 Delta R.T.: 0.000 min  
 Response: 196577293  
 Conc: 470.52 ng/ml

Instrument :  
 ECD\_Q  
 ClientSampleId :  
 AR1660CCC500



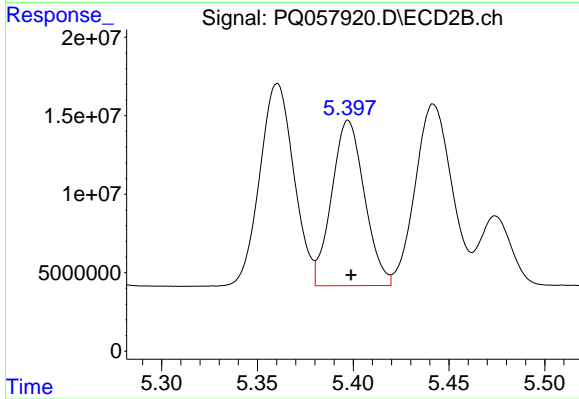
#5 AR-1016-3

R.T.: 5.360 min  
 Delta R.T.: 0.000 min  
 Response: 159814009  
 Conc: 578.70 ng/ml



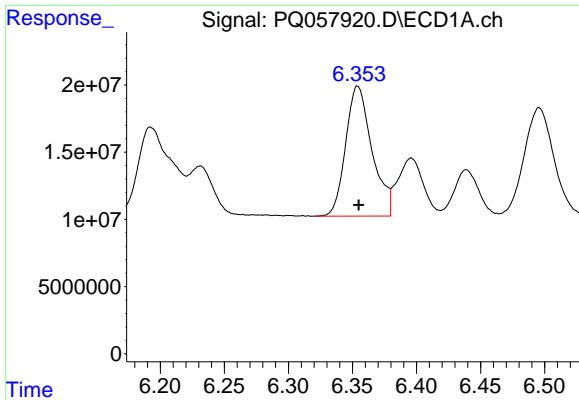
#6 AR-1016-4

R.T.: 6.061 min  
 Delta R.T.: 0.000 min  
 Response: 169425440  
 Conc: 471.52 ng/ml



#6 AR-1016-4

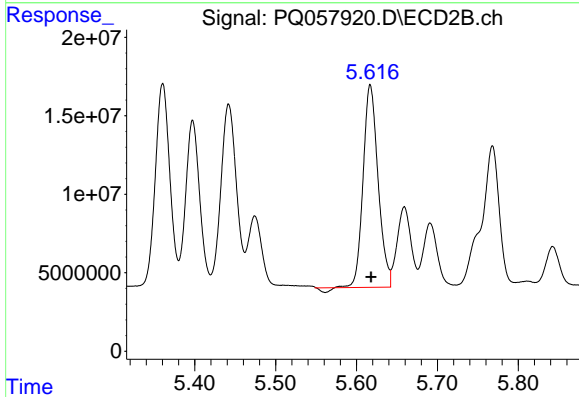
R.T.: 5.397 min  
 Delta R.T.: -0.002 min  
 Response: 125755369  
 Conc: 583.72 ng/ml



#7 AR-1016-5

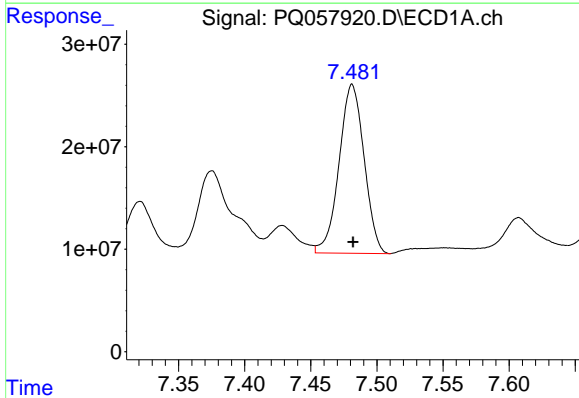
R.T.: 6.354 min  
 Delta R.T.: 0.000 min  
 Response: 138329035  
 Conc: 483.43 ng/ml

Instrument :  
 ECD\_Q  
 ClientSampleId :  
 AR1660CCC500



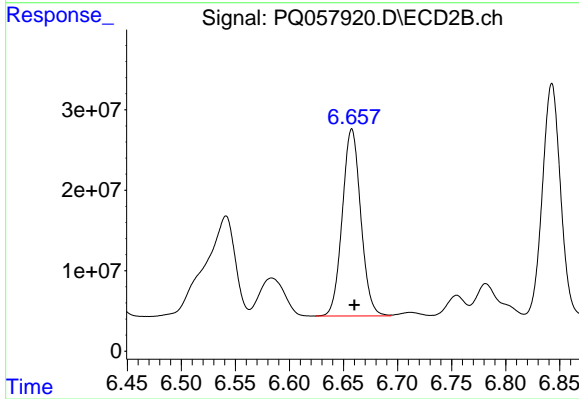
#7 AR-1016-5

R.T.: 5.617 min  
 Delta R.T.: -0.001 min  
 Response: 164988085  
 Conc: 583.81 ng/ml



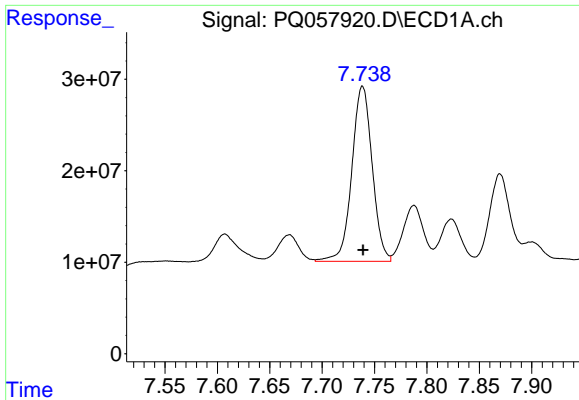
#31 AR-1260-1

R.T.: 7.481 min  
 Delta R.T.: 0.000 min  
 Response: 217265126  
 Conc: 496.73 ng/ml



#31 AR-1260-1

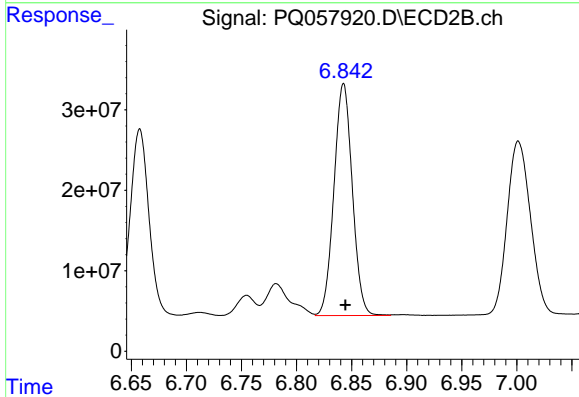
R.T.: 6.658 min  
 Delta R.T.: -0.002 min  
 Response: 276568653  
 Conc: 532.32 ng/ml



#32 AR-1260-2

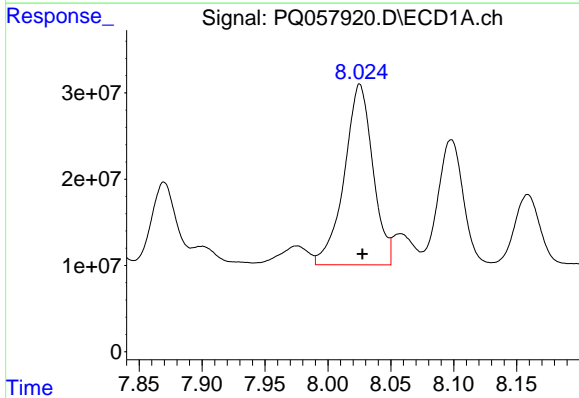
R.T.: 7.739 min  
 Delta R.T.: 0.000 min  
 Response: 259163660  
 Conc: 467.72 ng/ml

Instrument :  
 ECD\_Q  
 ClientSampleId :  
 AR1660CCC500



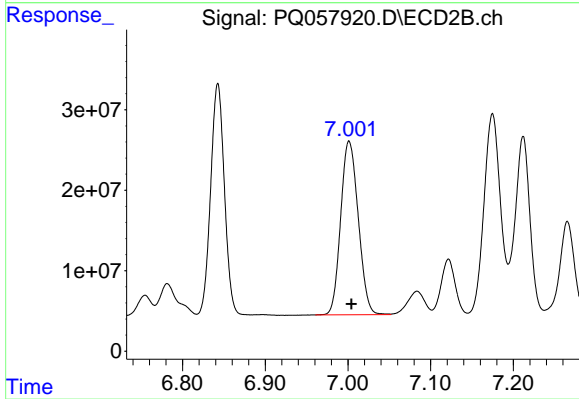
#32 AR-1260-2

R.T.: 6.843 min  
 Delta R.T.: -0.002 min  
 Response: 334326267  
 Conc: 536.10 ng/ml



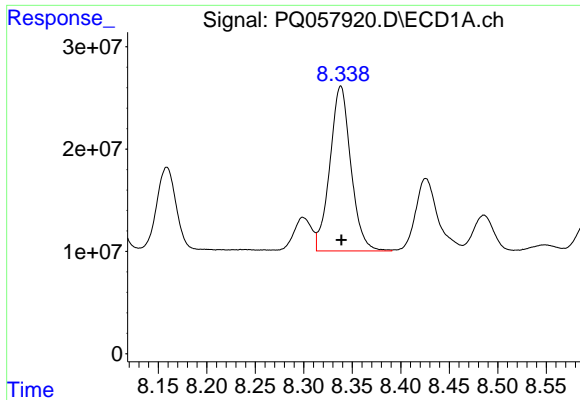
#33 AR-1260-3

R.T.: 8.025 min  
 Delta R.T.: -0.002 min  
 Response: 331307998  
 Conc: 491.86 ng/ml



#33 AR-1260-3

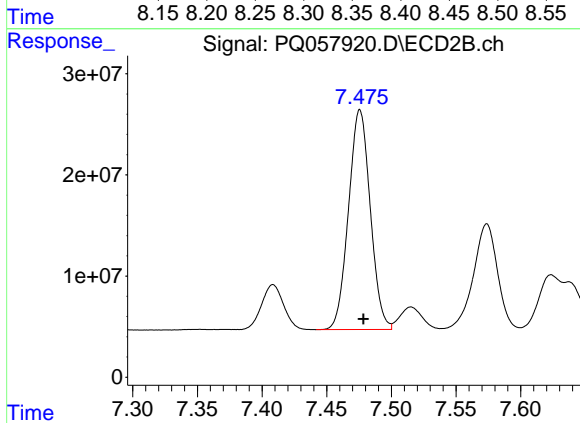
R.T.: 7.001 min  
 Delta R.T.: -0.003 min  
 Response: 318251768  
 Conc: 488.60 ng/ml



#34 AR-1260-4

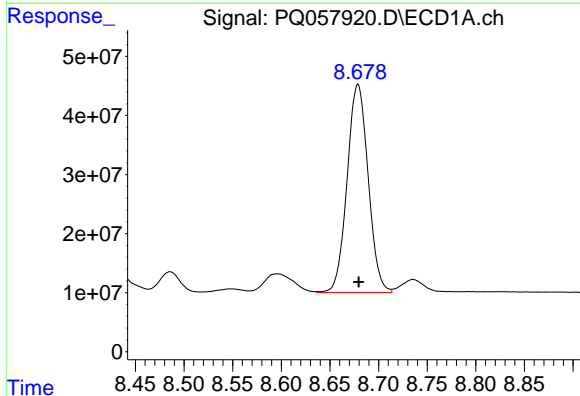
R.T.: 8.338 min  
 Delta R.T.: 0.000 min  
 Response: 242877894  
 Conc: 486.74 ng/ml

Instrument :  
 ECD\_Q  
 ClientSampleId :  
 AR1660CCC500



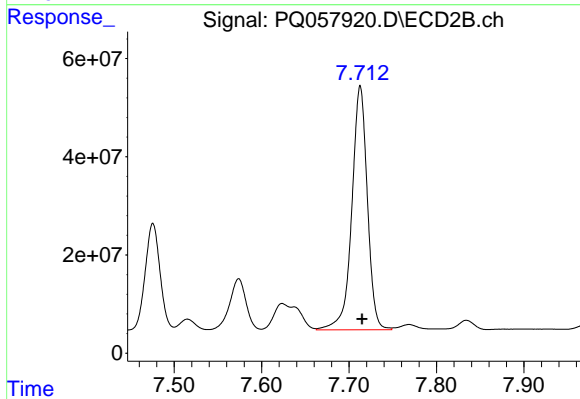
#34 AR-1260-4

R.T.: 7.476 min  
 Delta R.T.: -0.003 min  
 Response: 254487280  
 Conc: 506.10 ng/ml



#35 AR-1260-5

R.T.: 8.679 min  
 Delta R.T.: 0.000 min  
 Response: 531640840  
 Conc: 477.18 ng/ml



#35 AR-1260-5

R.T.: 7.713 min  
 Delta R.T.: -0.002 min  
 Response: 613405659  
 Conc: 499.52 ng/ml