

Data Path : Z:\pestpcbsrv\HPCHEM1\ECD\_Q\Data\PQ060422\  
 Data File : PQ057976.D  
 Signal(s) : Signal #1: ECD1A.ch Signal #2: ECD2B.ch  
 Acq On : 03 Jun 2022 13:37  
 Operator : YP\AJ  
 Sample : N2988-19  
 Misc :  
 ALS Vial : 19 Sample Multiplier: 1

Instrument :  
 ECD\_Q  
 ClientSampleId :  
 P015-SS005-0006-01

Integration File signal 1: autoint1.e  
 Integration File signal 2: autoint2.e  
 Quant Time: Jun 03 23:10:56 2022  
 Quant Method : Z:\pestpcbsrv\HPCHEM1\ECD\_Q\Method\PQ052822.M  
 Quant Title : GC EXTRACTABLES  
 QLast Update : Sat May 28 06:33:00 2022  
 Response via : Initial Calibration  
 Integrator: ChemStation

Volume Inj. : 2 µl  
 Signal #1 Phase : ZB-MR2 Signal #2 Phase: ZB-MR2  
 Signal #1 Info : 30Mx0.32mmx 0.50µ Signal #2 Info : 30M x 0.32mm x 0.25µm

Compound	RT#1	RT#2	Resp#1	Resp#2	ng/ml	ng/ml
-----						
System Monitoring Compounds						
1) SA Tetrachlo...	4.688	4.050	274.6E6	265.8E6	19.026	23.391
2) SA Decachlor...	10.612	9.201	248.5E6	196.4E6	19.813	20.697
Target Compounds						
31) L7 AR-1260-1	7.480	6.655	26681008	20454525	61.001	39.370 #
32) L7 AR-1260-2	7.738	6.840	82289120	106.0E6	148.509	170.026
33) L7 AR-1260-3	8.025	7.000	144.6E6	30694976	214.686	47.125 #
34) L7 AR-1260-4	8.336	7.473	63795950	53440312	127.849	106.277
35) L7 AR-1260-5	8.679	7.710	214.2E6	254.4E6	192.242	207.147
-----						

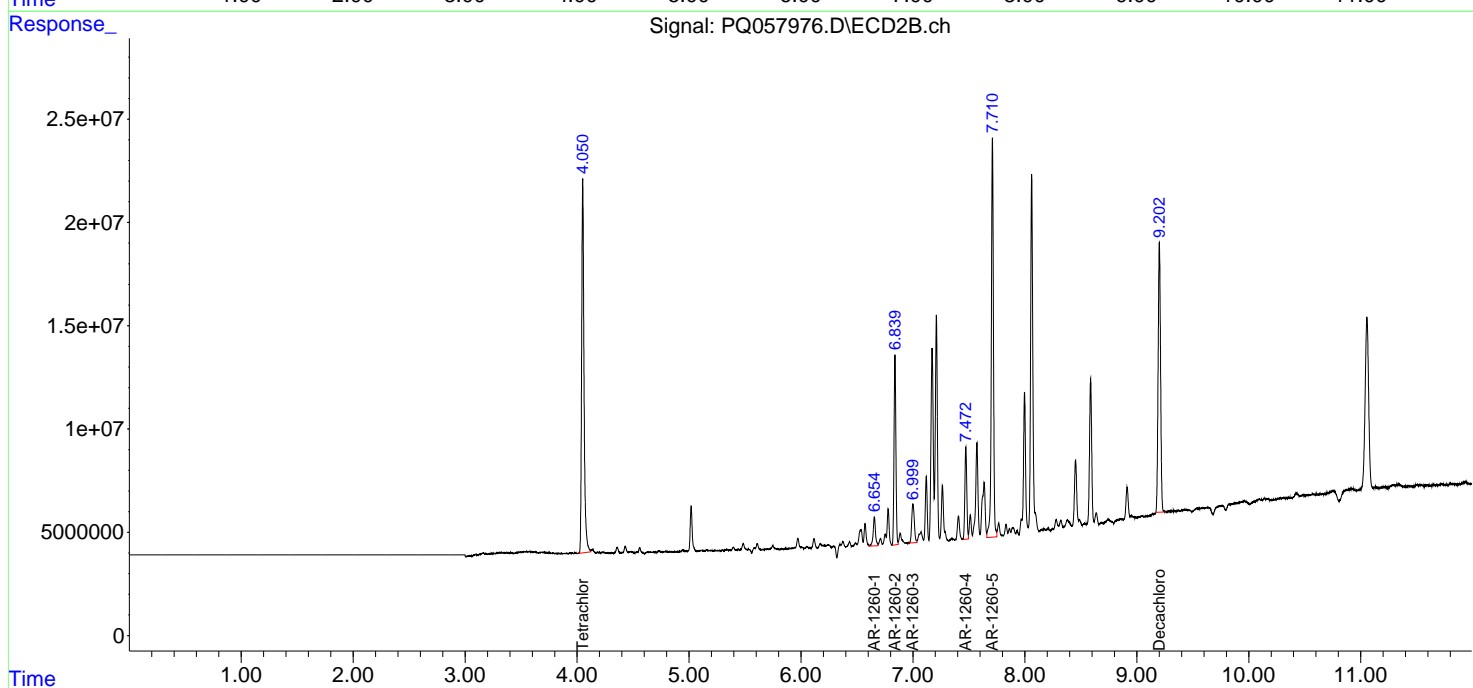
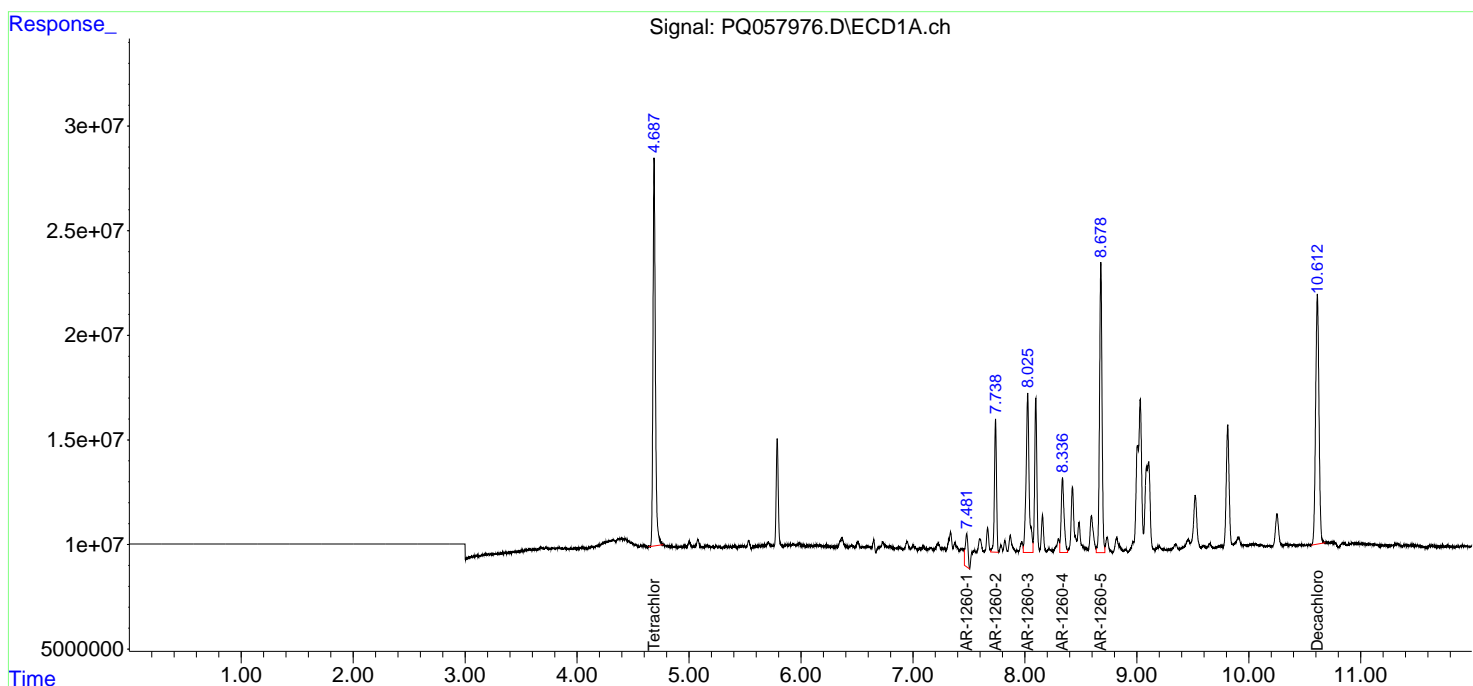
(f)=RT Delta > 1/2 Window (#)=Amounts differ by > 25% (m)=manual int.

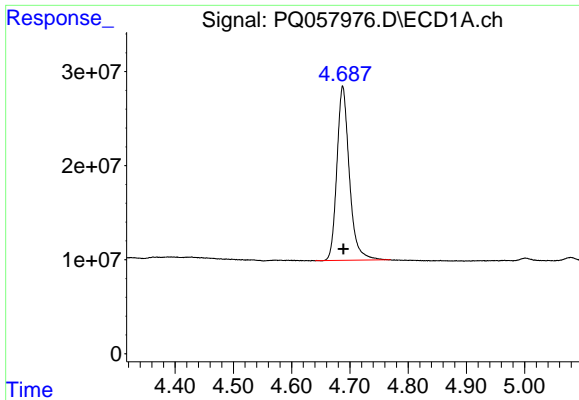
Data Path : Z:\pestpcbsrv\HPCHEM1\ECD\_Q\Data\PQ060422\  
 Data File : PQ057976.D  
 Signal(s) : Signal #1: ECD1A.ch Signal #2: ECD2B.ch  
 Acq On : 03 Jun 2022 13:37  
 Operator : YP\AJ  
 Sample : N2988-19  
 Misc :  
 ALS Vial : 19 Sample Multiplier: 1

Instrument :  
 ECD\_Q  
 ClientSampleId :  
 P015-SS005-0006-01

Integration File signal 1: autoint1.e  
 Integration File signal 2: autoint2.e  
 Quant Time: Jun 03 23:10:56 2022  
 Quant Method : Z:\pestpcbsrv\HPCHEM1\ECD\_Q\Method\PQ052822.M  
 Quant Title : GC EXTRACTABLES  
 QLast Update : Sat May 28 06:33:00 2022  
 Response via : Initial Calibration  
 Integrator: ChemStation

Volume Inj. : 2 µl  
 Signal #1 Phase : ZB-MR1 Signal #2 Phase: ZB-MR2  
 Signal #1 Info : 30Mx0.32mmx 0.50µ Signal #2 Info : 30M x 0.32mm x 0.25µm

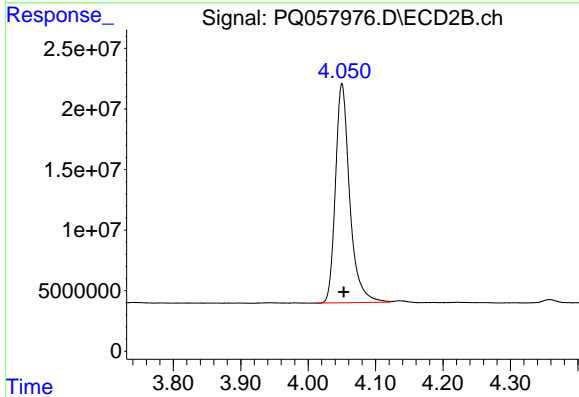




#1 Tetrachloro-m-xylene

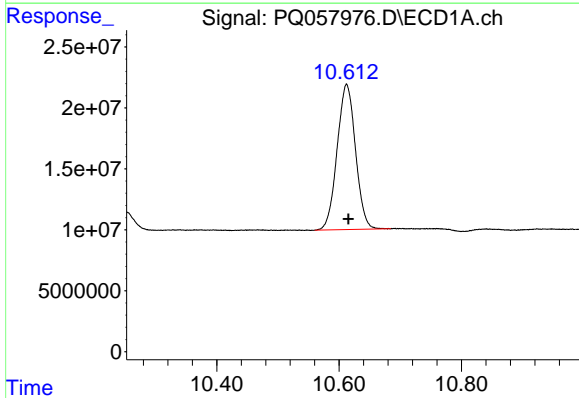
R.T.: 4.688 min  
 Delta R.T.: -0.001 min  
 Response: 274580398  
 Conc: 19.03 ng/ml

Instrument :  
 ECD\_Q  
 ClientSampleId :  
 P015-SS005-0006-01



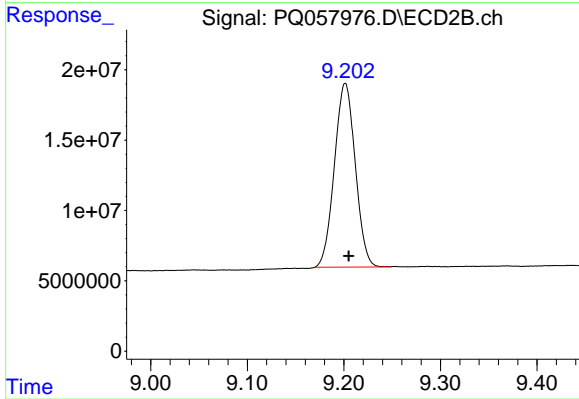
#1 Tetrachloro-m-xylene

R.T.: 4.050 min  
 Delta R.T.: -0.002 min  
 Response: 265790645  
 Conc: 23.39 ng/ml



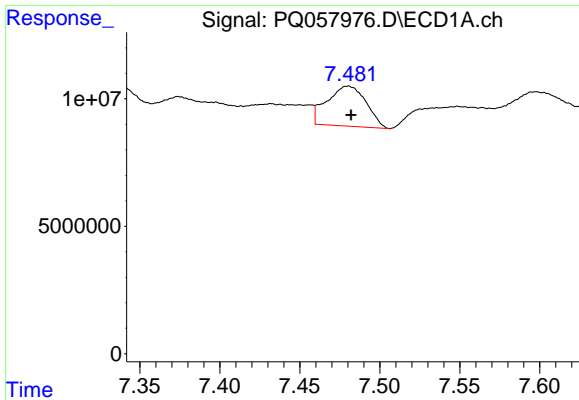
#2 Decachlorobiphenyl

R.T.: 10.612 min  
 Delta R.T.: -0.003 min  
 Response: 248489772  
 Conc: 19.81 ng/ml



#2 Decachlorobiphenyl

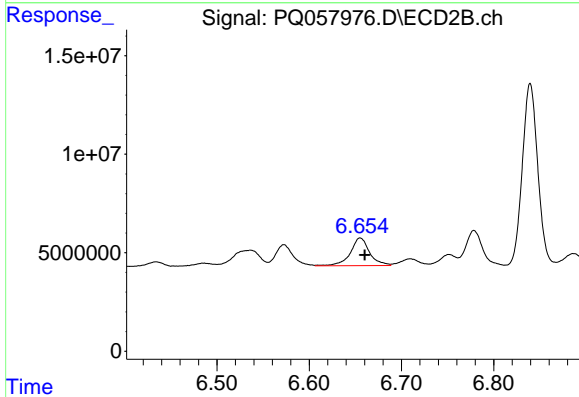
R.T.: 9.201 min  
 Delta R.T.: -0.004 min  
 Response: 196415876  
 Conc: 20.70 ng/ml



#31 AR-1260-1

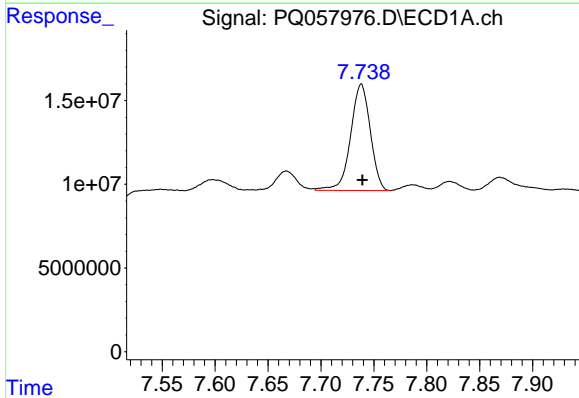
R.T.: 7.480 min  
 Delta R.T.: -0.002 min  
 Response: 26681008  
 Conc: 61.00 ng/ml

Instrument :  
 ECD\_Q  
 ClientSampleId :  
 P015-SS005-0006-01



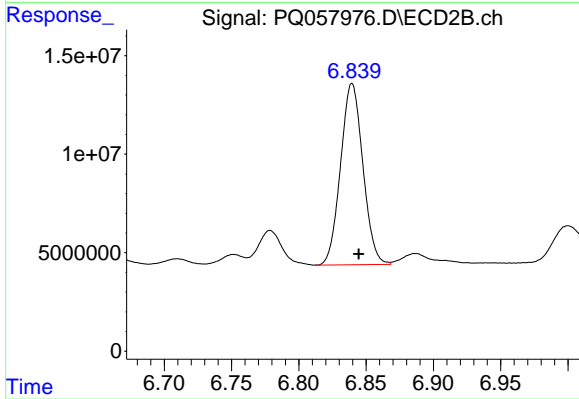
#31 AR-1260-1

R.T.: 6.655 min  
 Delta R.T.: -0.005 min  
 Response: 20454525  
 Conc: 39.37 ng/ml



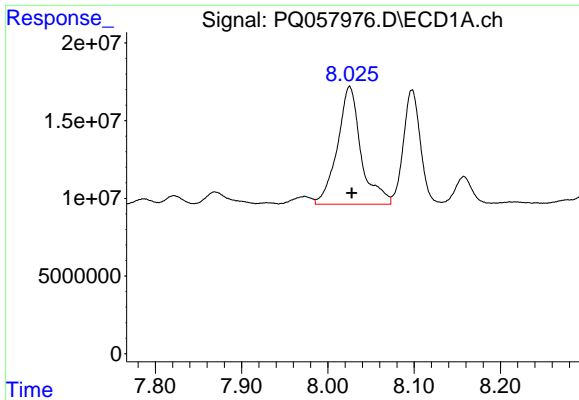
#32 AR-1260-2

R.T.: 7.738 min  
 Delta R.T.: 0.000 min  
 Response: 82289120  
 Conc: 148.51 ng/ml



#32 AR-1260-2

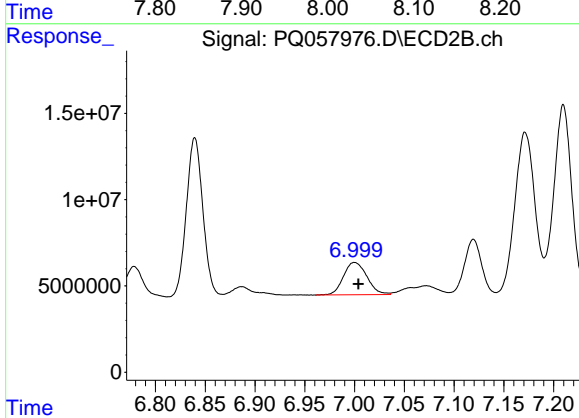
R.T.: 6.840 min  
 Delta R.T.: -0.005 min  
 Response: 106032247  
 Conc: 170.03 ng/ml



#33 AR-1260-3

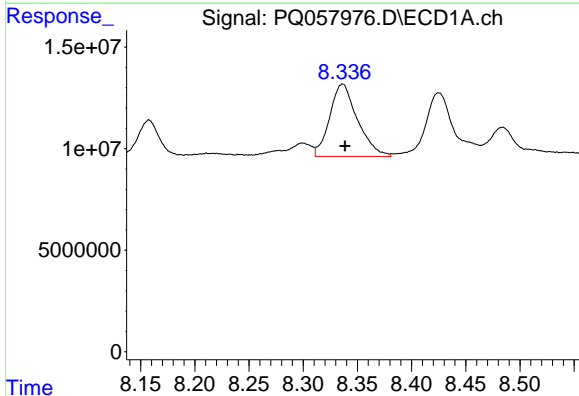
R.T.: 8.025 min  
 Delta R.T.: -0.002 min  
 Response: 144609118  
 Conc: 214.69 ng/ml

Instrument :  
 ECD\_Q  
 ClientSampleId :  
 P015-SS005-0006-01



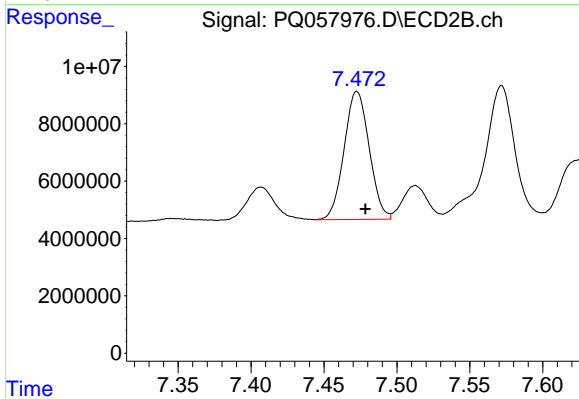
#33 AR-1260-3

R.T.: 7.000 min  
 Delta R.T.: -0.004 min  
 Response: 30694976  
 Conc: 47.13 ng/ml



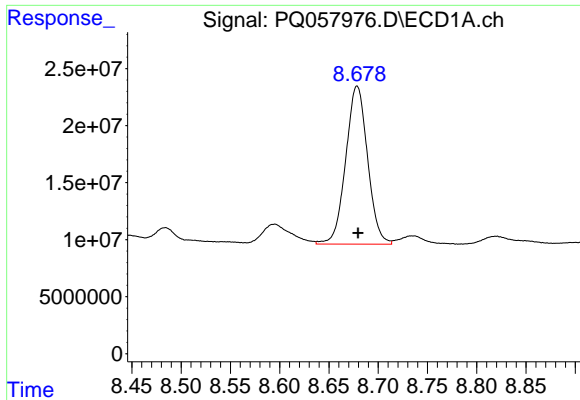
#34 AR-1260-4

R.T.: 8.336 min  
 Delta R.T.: -0.002 min  
 Response: 63795950  
 Conc: 127.85 ng/ml



#34 AR-1260-4

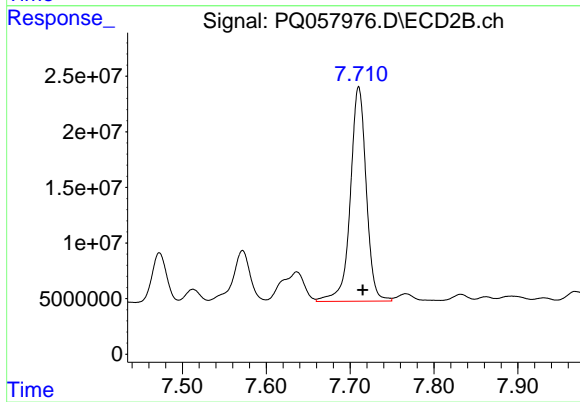
R.T.: 7.473 min  
 Delta R.T.: -0.006 min  
 Response: 53440312  
 Conc: 106.28 ng/ml



#35 AR-1260-5

R.T.: 8.679 min  
Delta R.T.: -0.001 min  
Response: 214181935  
Conc: 192.24 ng/ml

Instrument :  
ECD\_Q  
ClientSampleId :  
P015-SS005-0006-01



#35 AR-1260-5

R.T.: 7.710 min  
Delta R.T.: -0.005 min  
Response: 254376781  
Conc: 207.15 ng/ml