

Data Path : Z:\pestpcbsrv\HPCHEM1\ECD\_Q\Data\PQ060424\  
 Data File : PQ066914.D  
 Signal(s) : Signal #1: ECD1A.ch Signal #2: ECD2B.ch  
 Acq On : 04 Jun 2024 16:52  
 Operator : YP\AJ  
 Sample : AR1242CCC500  
 Misc :  
 ALS Vial : 4 Sample Multiplier: 1

Instrument :  
 ECD\_Q  
 ClientSampleId :  
 AR1242CCC500

Integration File signal 1: autoint1.e  
 Integration File signal 2: autoint2.e  
 Quant Time: Jun 04 23:24:59 2024  
 Quant Method : Z:\pestpcbsrv\HPCHEM1\ECD\_Q\Method\PQ053124.M  
 Quant Title : GC EXTRACTABLES  
 QLast Update : Mon Jun 03 10:00:54 2024  
 Response via : Initial Calibration  
 Integrator: ChemStation

Volume Inj. : 2 µl  
 Signal #1 Phase : ZB-MR1 Signal #2 Phase: ZB-MR2  
 Signal #1 Info : 30Mx0.32mmx 0.50µ Signal #2 Info : 30M x 0.32mm x 0.25µm

Compound	RT#1	RT#2	Resp#1	Resp#2	ng/ml	ng/ml
----------	------	------	--------	--------	-------	-------

System Monitoring Compounds

1) SA Tetrachlo...	3.449	2.826	300.8E6	306.9E6	54.302	52.465
2) SA Decachlor...	8.707	7.614	206.7E6	290.2E6	54.504	50.535

Target Compounds

3) L1 AR-1016-1	4.559	3.834	76457067	88550805	451.673	433.142
4) L1 AR-1016-2	4.578	3.851	115.8E6	126.8E6	440.113	427.348
5) L1 AR-1016-3	4.636	4.012	71454041	70115235	445.215	427.152
6) L1 AR-1016-4	4.729	4.060	57783275	58035299	450.895	421.339
7) L1 AR-1016-5	5.019	4.257	58212431	74508094	451.988	434.218
8) L2 AR-1221-1	3.647	3.026	9548904	11993317	145.265	149.738
9) L2 AR-1221-2	3.729	3.103	13459254	13947386	277.894	266.897
10) L2 AR-1221-3	3.800	3.173	46729604	52738646	307.739	301.921
11) L3 AR-1232-1	3.800	3.173	46729604	52738646	378.545	365.609
12) L3 AR-1232-2	4.298	3.851	61262842	126.8E6	929.066	892.484
13) L3 AR-1232-3	4.578	4.012	115.8E6	70115235	961.205	900.675
14) L3 AR-1232-4	4.729	4.098	57783275	66470850	1005.284	999.581
15) L3 AR-1232-5	4.827	4.257	43971035	74508094	1099.102	993.730
16) L4 AR-1242-1	4.559	3.834	76457067	88550805	536.191	509.082
17) L4 AR-1242-2	4.578	3.851	115.8E6	126.8E6	526.349	508.805
18) L4 AR-1242-3	4.636	4.012	71454041	70115235	530.837	502.425
19) L4 AR-1242-4	4.729	4.098	57783275	66470850	545.977	508.916
20) L4 AR-1242-5	5.453	4.596	62228047	84884268	544.780	511.338
21) L5 AR-1248-1	4.559	3.834	76457067	88550805	724.665	691.789
22) L5 AR-1248-2	4.827	4.060	43971035	58035299	299.888	302.809
23) L5 AR-1248-3	5.019	4.098	58212431	66470850	333.072	361.121
24) L5 AR-1248-4	5.419	4.257	59174737	74508094	301.683	330.242
25) L5 AR-1248-5	5.453	4.634	62228047	71628091	313.044	334.746
26) L6 AR-1254-1	5.389	4.596	45665506	84884268	220.366	253.130
27) L6 AR-1254-2	5.607	4.743	54856274	21323808	170.040	73.867 #
28) L6 AR-1254-3	5.969	5.126	23713421	29708774	69.864	63.906
29) L6 AR-1254-4	6.258	5.353	18154314	21531475	77.111	77.290
30) L6 AR-1254-5	6.679	5.759	7114012	8507315	26.850	20.300
31) L7 AR-1260-1	6.139	5.260	4886033	13074326	18.948	39.497 #
32) L7 AR-1260-2	6.401	5.446	3334077	3379279	10.968	8.645
33) L7 AR-1260-3	6.756	5.583	545158	4061165	2.464	10.719 #
34) L7 AR-1260-4	6.957	6.053	1931046	642200	7.971	2.044 #
35) L7 AR-1260-5	7.297	6.295	514750	1402721	1.052	2.125 #
36) L8 AR-1262-1	6.756	5.823	545158	1026739	1.649	2.375 #
37) L8 AR-1262-2	7.297	6.295	514750	1402721	0.961	1.925 #
38) L8 AR-1262-3	7.579	6.560	457953	3721100	1.303	11.947 #
39) L8 AR-1262-4	7.645	6.637	190017	2637205	0.704	4.624 #
40) L8 AR-1262-5	8.166	7.127	132248	653931	0.790	2.521 #
41) L9 AR-1268-1	7.579	6.560	457953	3721100	0.763	4.242 #

Data Path : Z:\pestpcbsrv\HPCHEM1\ECD\_Q\Data\PQ060424\  
 Data File : PQ066914.D  
 Signal(s) : Signal #1: ECD1A.ch Signal #2: ECD2B.ch  
 Acq On : 04 Jun 2024 16:52  
 Operator : YP\AJ  
 Sample : AR1242CCC500  
 Misc :  
 ALS Vial : 4 Sample Multiplier: 1

Instrument :  
 ECD\_Q  
 ClientSampleId :  
 AR1242CCC500

Integration File signal 1: autoint1.e  
 Integration File signal 2: autoint2.e  
 Quant Time: Jun 04 23:24:59 2024  
 Quant Method : Z:\pestpcbsrv\HPCHEM1\ECD\_Q\Method\PQ053124.M  
 Quant Title : GC EXTRACTABLES  
 QLast Update : Mon Jun 03 10:00:54 2024  
 Response via : Initial Calibration  
 Integrator: ChemStation

Volume Inj. : 2 µl  
 Signal #1 Phase : ZB-MR1 Signal #2 Phase: ZB-MR2  
 Signal #1 Info : 30Mx0.32mmx 0.50µ Signal #2 Info : 30M x 0.32mm x 0.25µm

	Compound	RT#1	RT#2	Resp#1	Resp#2	ng/ml	ng/ml
42)	L9 AR-1268-2	7.645	6.637	190017	2637205	0.352	3.295 #
43)	L9 AR-1268-3	7.835	6.838	675355	1637291	1.449	2.361 #
44)	L9 AR-1268-4	8.166	7.127	132248	653931	0.751	2.305 #
45)	L9 AR-1268-5	8.470	7.396	1057897	2520752	0.792	1.233 #

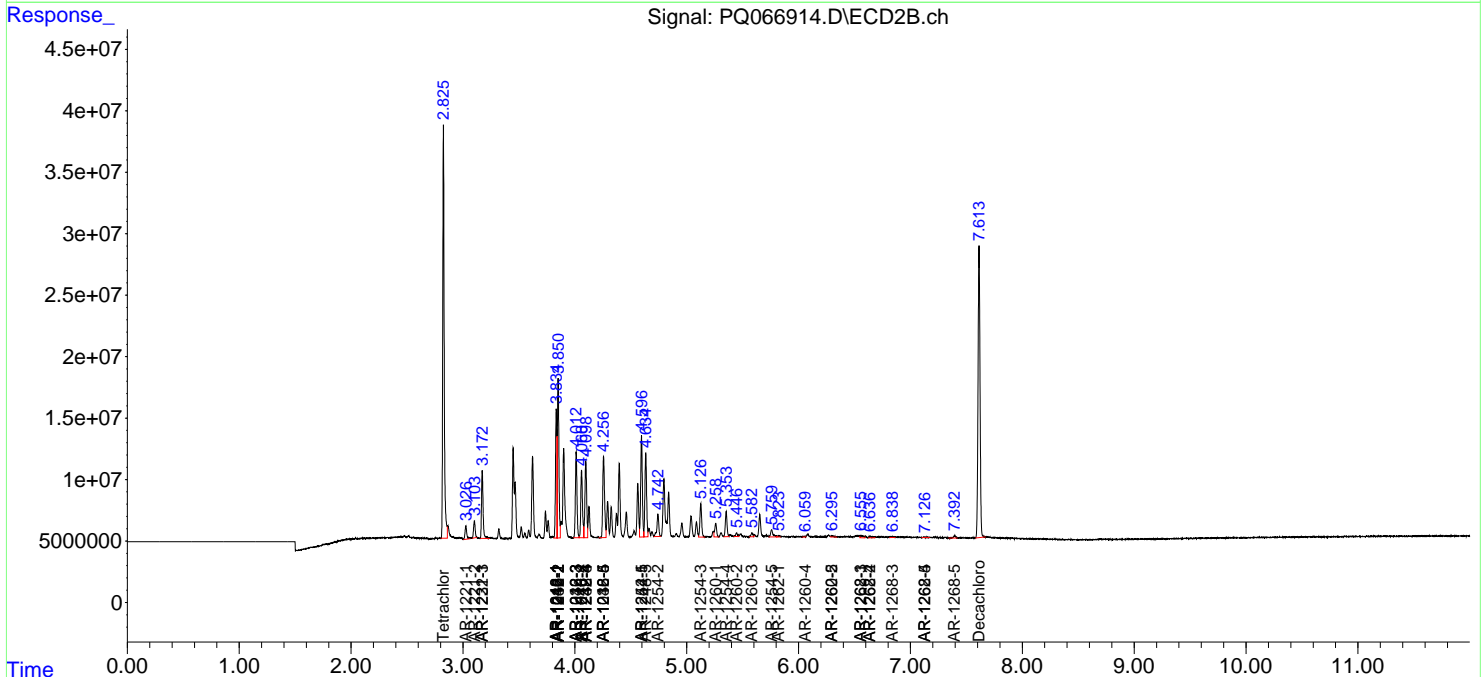
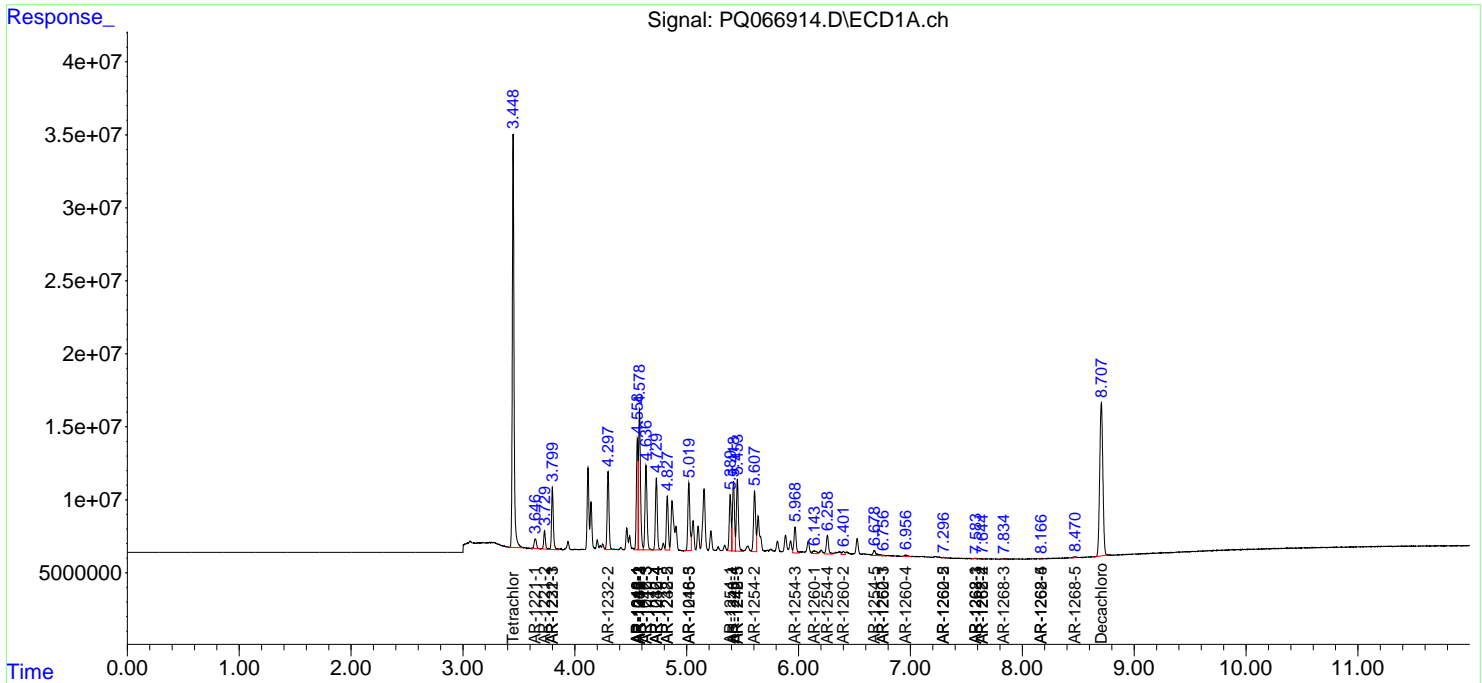
(f)=RT Delta > 1/2 Window (#)=Amounts differ by > 25% (m)=manual int.

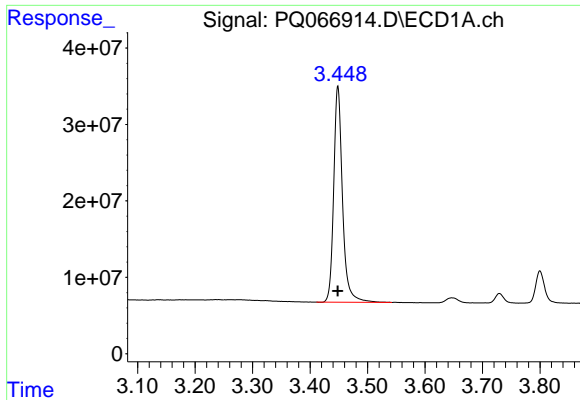
Data Path : Z:\pestpcbsrv\HPCHEM1\ECD\_Q\Data\PQ060424\  
 Data File : PQ066914.D  
 Signal(s) : Signal #1: ECD1A.ch Signal #2: ECD2B.ch  
 Acq On : 04 Jun 2024 16:52  
 Operator : YP\AJ  
 Sample : AR1242CCC500  
 Misc :  
 ALS Vial : 4 Sample Multiplier: 1

Instrument :  
 ECD\_Q  
 ClientSampleId :  
 AR1242CCC500

Integration File signal 1: autoint1.e  
 Integration File signal 2: autoint2.e  
 Quant Time: Jun 04 23:24:59 2024  
 Quant Method : Z:\pestpcbsrv\HPCHEM1\ECD\_Q\Method\PQ053124.M  
 Quant Title : GC EXTRACTABLES  
 QLast Update : Mon Jun 03 10:00:54 2024  
 Response via : Initial Calibration  
 Integrator: ChemStation

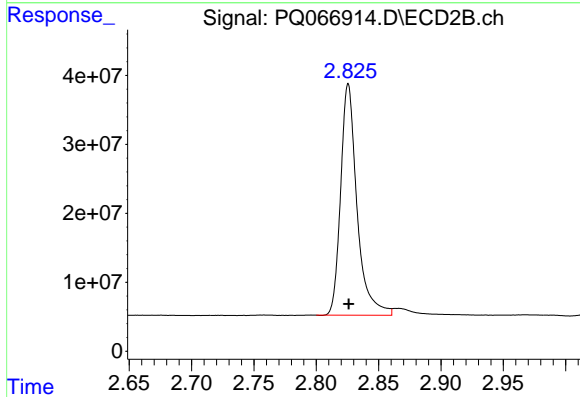
Volume Inj. : 2 µl  
 Signal #1 Phase : ZB-MR1 Signal #2 Phase: ZB-MR2  
 Signal #1 Info : 30Mx0.32mmx 0.50µ Signal #2 Info : 30M x 0.32mm x 0.25µm



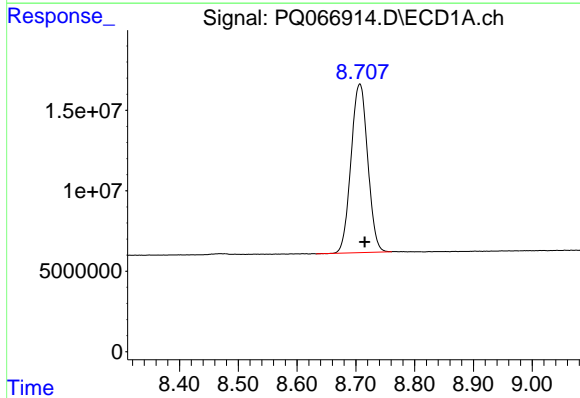


#1 Tetrachloro-m-xylene  
 R.T.: 3.449 min  
 Delta R.T.: 0.000 min  
 Response: 300756951  
 Conc: 54.30 ng/ml

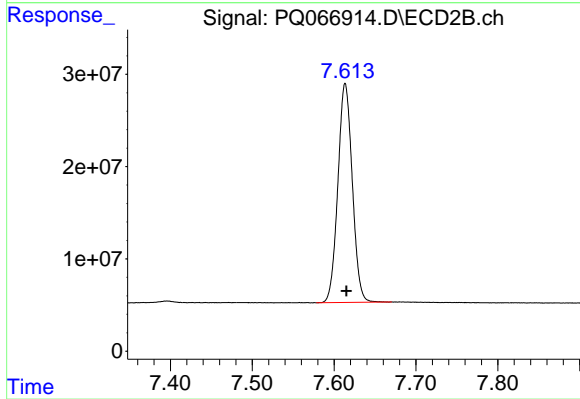
Instrument :  
 ECD\_Q  
 ClientSampleId :  
 AR1242CCC500



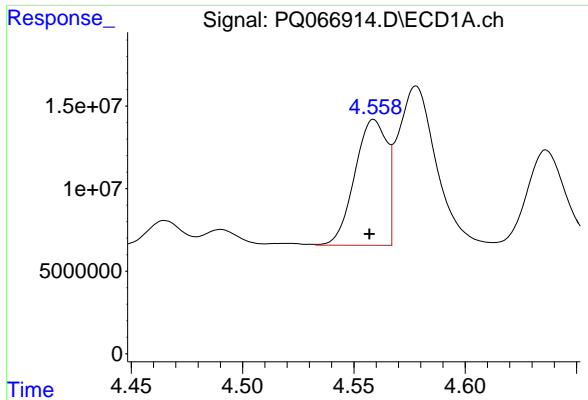
#1 Tetrachloro-m-xylene  
 R.T.: 2.826 min  
 Delta R.T.: 0.000 min  
 Response: 306913003  
 Conc: 52.47 ng/ml



#2 Decachlorobiphenyl  
 R.T.: 8.707 min  
 Delta R.T.: -0.008 min  
 Response: 206694981  
 Conc: 54.50 ng/ml

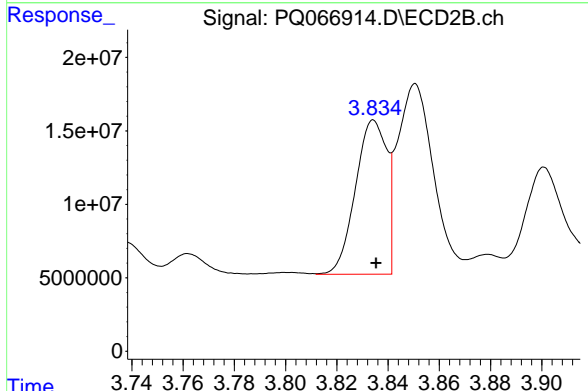


#2 Decachlorobiphenyl  
 R.T.: 7.614 min  
 Delta R.T.: -0.001 min  
 Response: 290229501  
 Conc: 50.54 ng/ml

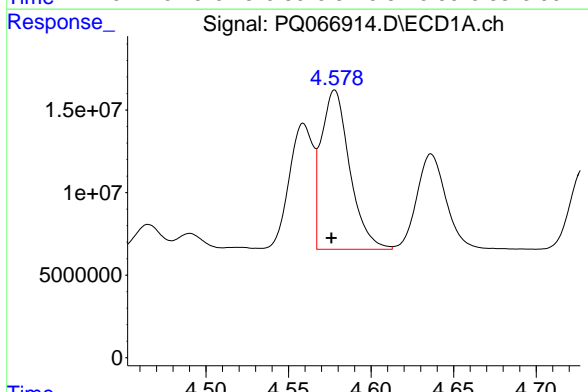


#3 AR-1016-1  
 R.T.: 4.559 min  
 Delta R.T.: 0.002 min  
 Response: 76457067  
 Conc: 451.67 ng/ml

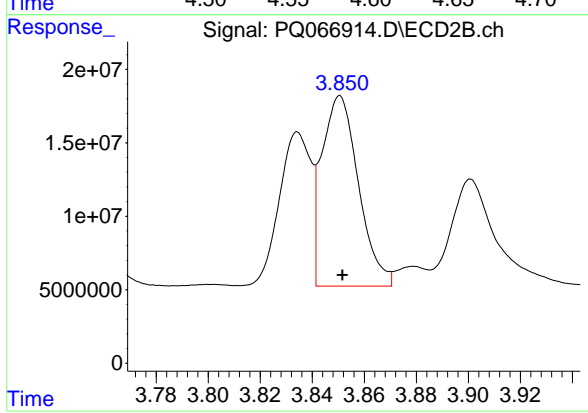
Instrument :  
 ECD\_Q  
 ClientSampleId :  
 AR1242CCC500



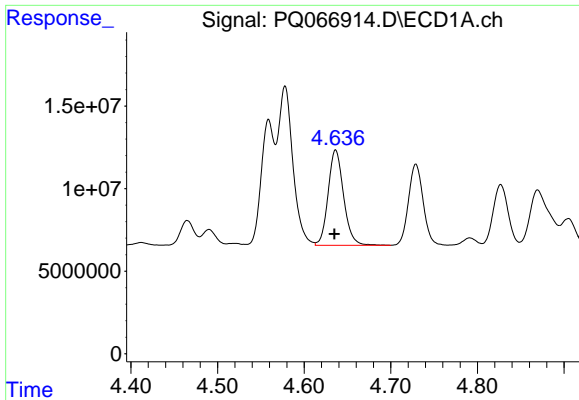
#3 AR-1016-1  
 R.T.: 3.834 min  
 Delta R.T.: 0.000 min  
 Response: 88550805  
 Conc: 433.14 ng/ml



#4 AR-1016-2  
 R.T.: 4.578 min  
 Delta R.T.: 0.002 min  
 Response: 115822691  
 Conc: 440.11 ng/ml



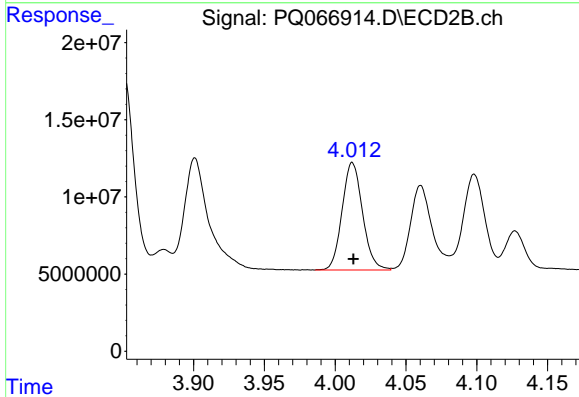
#4 AR-1016-2  
 R.T.: 3.851 min  
 Delta R.T.: 0.000 min  
 Response: 126805026  
 Conc: 427.35 ng/ml



#5 AR-1016-3

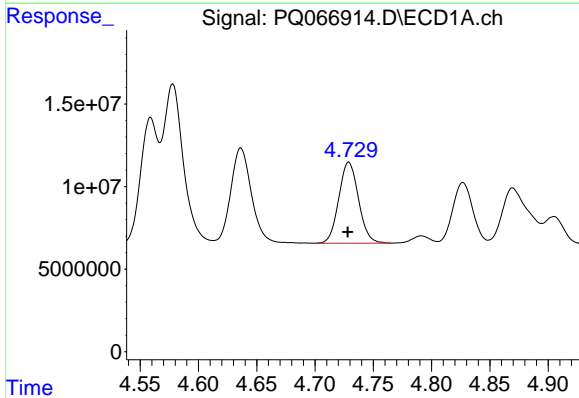
R.T.: 4.636 min  
 Delta R.T.: 0.001 min  
 Response: 71454041  
 Conc: 445.22 ng/ml

Instrument :  
 ECD\_Q  
 ClientSampleId :  
 AR1242CCC500



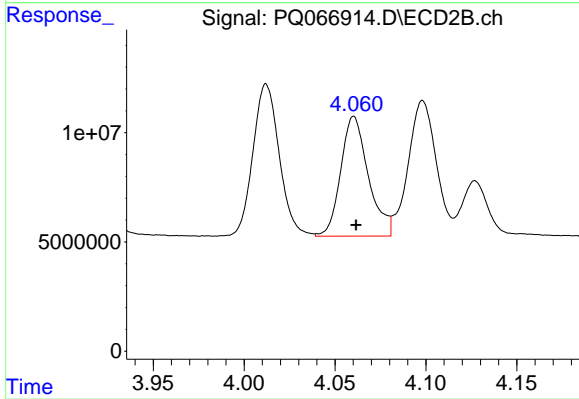
#5 AR-1016-3

R.T.: 4.012 min  
 Delta R.T.: 0.000 min  
 Response: 70115235  
 Conc: 427.15 ng/ml



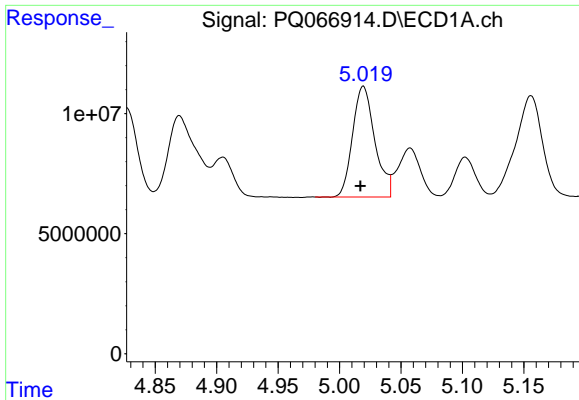
#6 AR-1016-4

R.T.: 4.729 min  
 Delta R.T.: 0.000 min  
 Response: 57783275  
 Conc: 450.90 ng/ml



#6 AR-1016-4

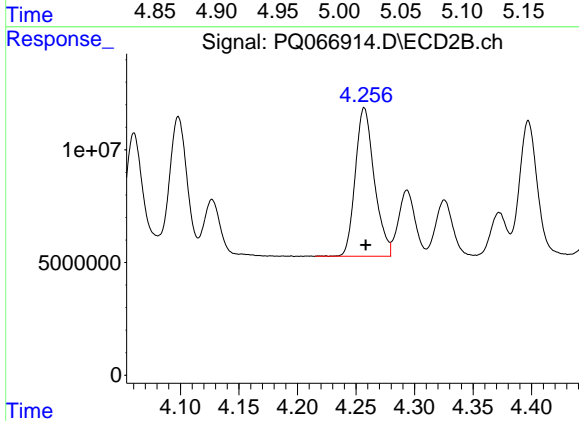
R.T.: 4.060 min  
 Delta R.T.: -0.001 min  
 Response: 58035299  
 Conc: 421.34 ng/ml



#7 AR-1016-5

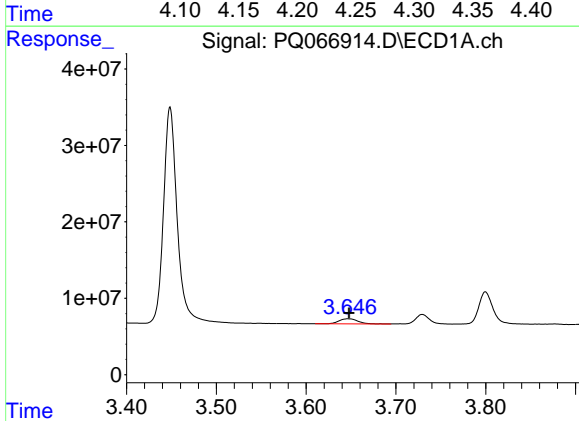
R.T.: 5.019 min  
 Delta R.T.: 0.002 min  
 Response: 58212431  
 Conc: 451.99 ng/ml

Instrument :  
 ECD\_Q  
 ClientSampleId :  
 AR1242CCC500



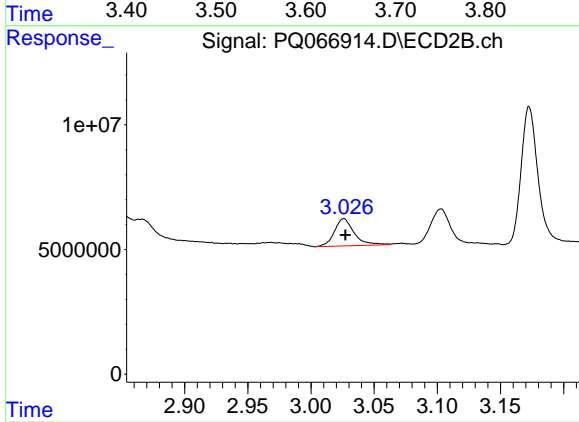
#7 AR-1016-5

R.T.: 4.257 min  
 Delta R.T.: -0.001 min  
 Response: 74508094  
 Conc: 434.22 ng/ml



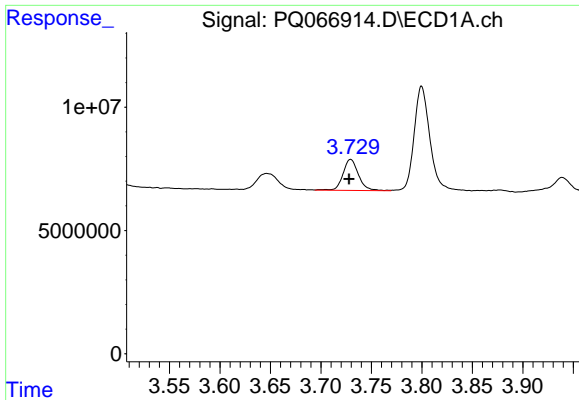
#8 AR-1221-1

R.T.: 3.647 min  
 Delta R.T.: -0.001 min  
 Response: 9548904  
 Conc: 145.27 ng/ml



#8 AR-1221-1

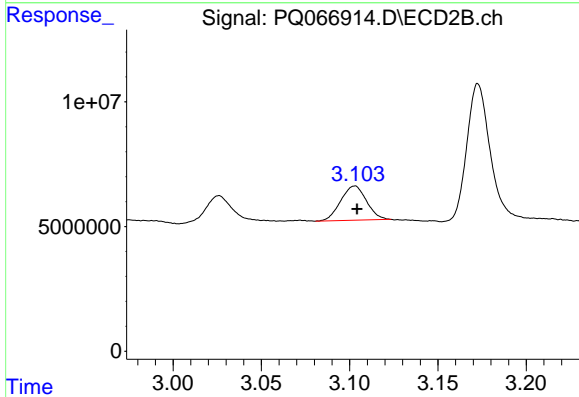
R.T.: 3.026 min  
 Delta R.T.: -0.001 min  
 Response: 11993317  
 Conc: 149.74 ng/ml



#9 AR-1221-2

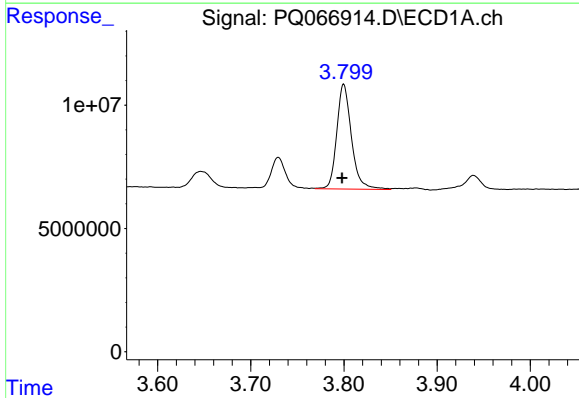
R.T.: 3.729 min  
 Delta R.T.: 0.001 min  
 Response: 13459254  
 Conc: 277.89 ng/ml

Instrument :  
 ECD\_Q  
 ClientSampleId :  
 AR1242CCC500



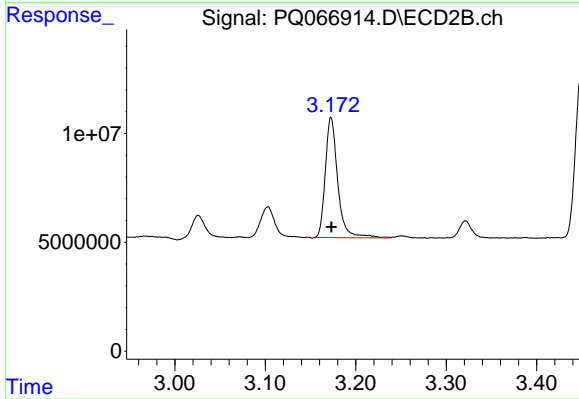
#9 AR-1221-2

R.T.: 3.103 min  
 Delta R.T.: 0.000 min  
 Response: 13947386  
 Conc: 266.90 ng/ml



#10 AR-1221-3

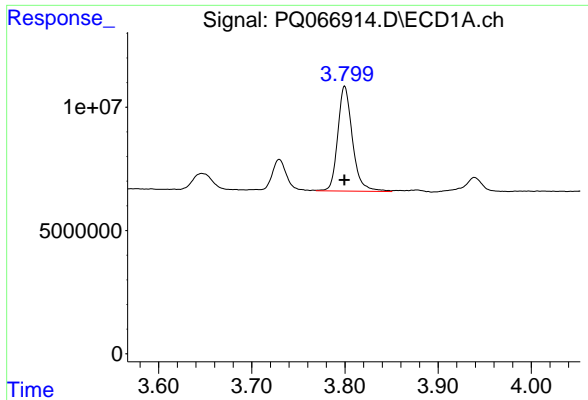
R.T.: 3.800 min  
 Delta R.T.: 0.002 min  
 Response: 46729604  
 Conc: 307.74 ng/ml



#10 AR-1221-3

R.T.: 3.173 min  
 Delta R.T.: 0.000 min  
 Response: 52738646  
 Conc: 301.92 ng/ml

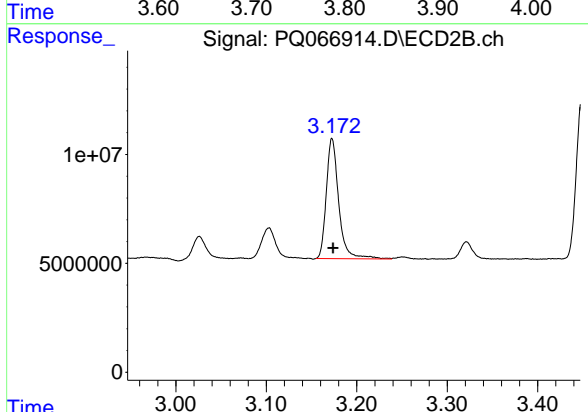




#11 AR-1232-1

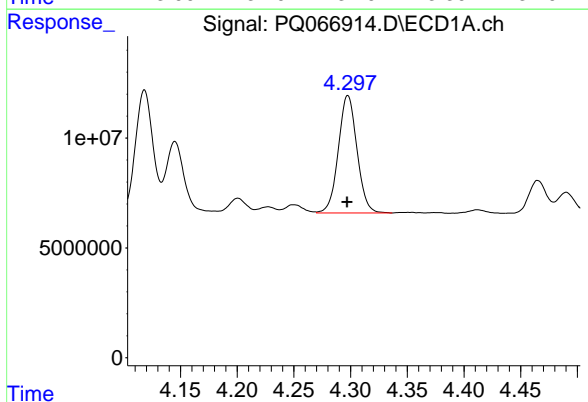
R.T.: 3.800 min  
 Delta R.T.: 0.000 min  
 Response: 46729604  
 Conc: 378.54 ng/ml

Instrument :  
 ECD\_Q  
 ClientSampleId :  
 AR1242CCC500



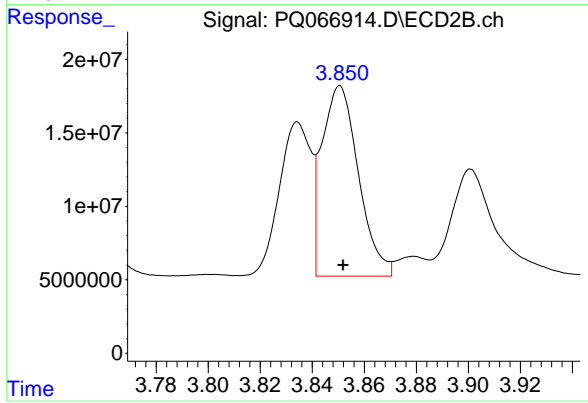
#11 AR-1232-1

R.T.: 3.173 min  
 Delta R.T.: -0.001 min  
 Response: 52738646  
 Conc: 365.61 ng/ml



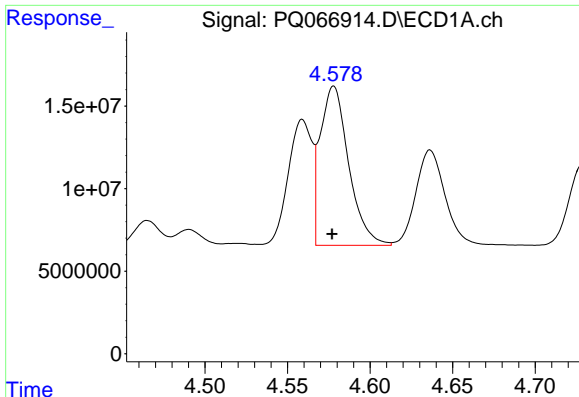
#12 AR-1232-2

R.T.: 4.298 min  
 Delta R.T.: 0.000 min  
 Response: 61262842  
 Conc: 929.07 ng/ml



#12 AR-1232-2

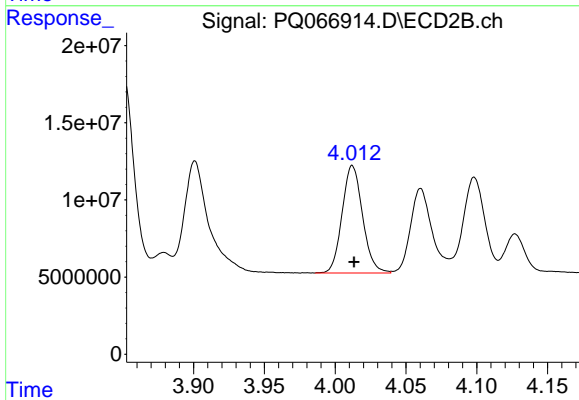
R.T.: 3.851 min  
 Delta R.T.: -0.001 min  
 Response: 126805026  
 Conc: 892.48 ng/ml



#13 AR-1232-3

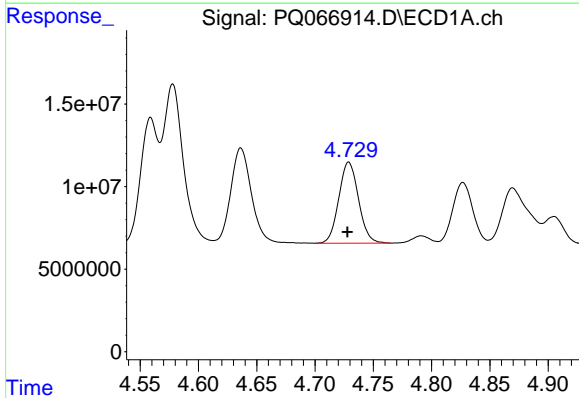
R.T.: 4.578 min  
 Delta R.T.: 0.000 min  
 Response: 115822691  
 Conc: 961.20 ng/ml

Instrument :  
 ECD\_Q  
 ClientSampleId :  
 AR1242CCC500



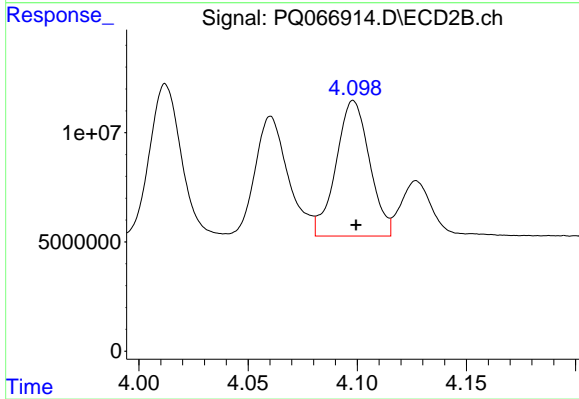
#13 AR-1232-3

R.T.: 4.012 min  
 Delta R.T.: -0.001 min  
 Response: 70115235  
 Conc: 900.67 ng/ml



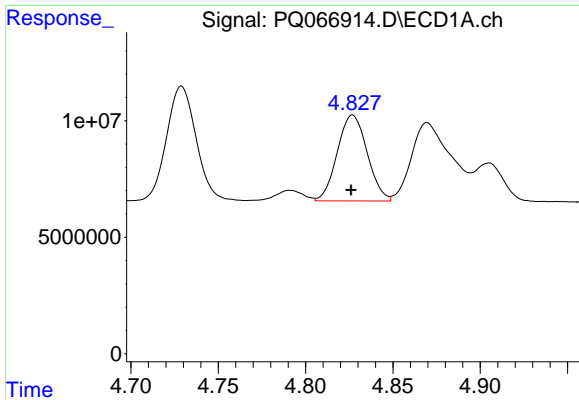
#14 AR-1232-4

R.T.: 4.729 min  
 Delta R.T.: 0.001 min  
 Response: 57783275  
 Conc: 1005.28 ng/ml



#14 AR-1232-4

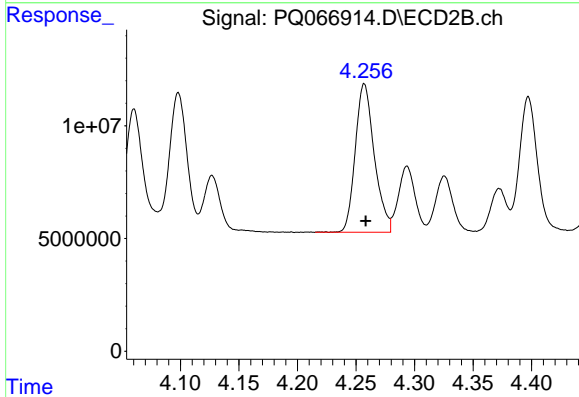
R.T.: 4.098 min  
 Delta R.T.: -0.001 min  
 Response: 66470850  
 Conc: 999.58 ng/ml



#15 AR-1232-5

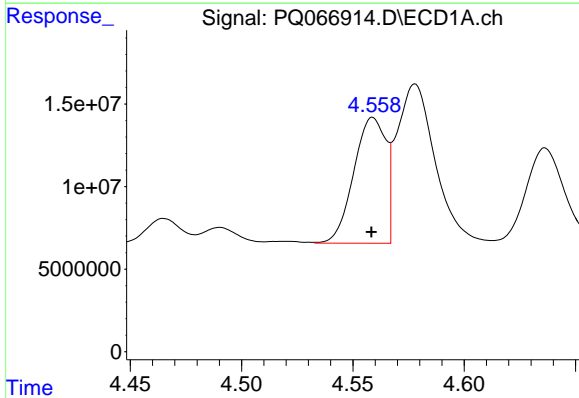
R.T.: 4.827 min  
 Delta R.T.: 0.000 min  
 Response: 43971035  
 Conc: 1099.10 ng/ml

Instrument :  
 ECD\_Q  
 ClientSampleId :  
 AR1242CCC500



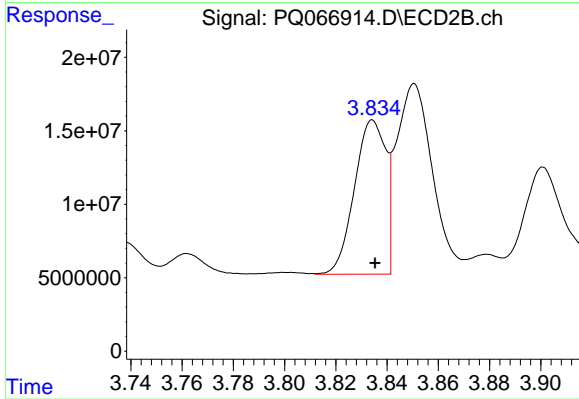
#15 AR-1232-5

R.T.: 4.257 min  
 Delta R.T.: -0.001 min  
 Response: 74508094  
 Conc: 993.73 ng/ml



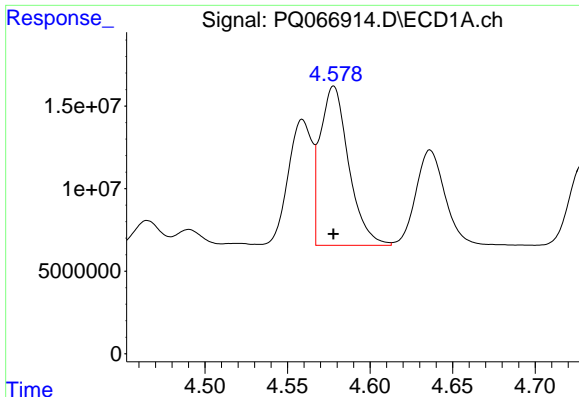
#16 AR-1242-1

R.T.: 4.559 min  
 Delta R.T.: 0.000 min  
 Response: 76457067  
 Conc: 536.19 ng/ml



#16 AR-1242-1

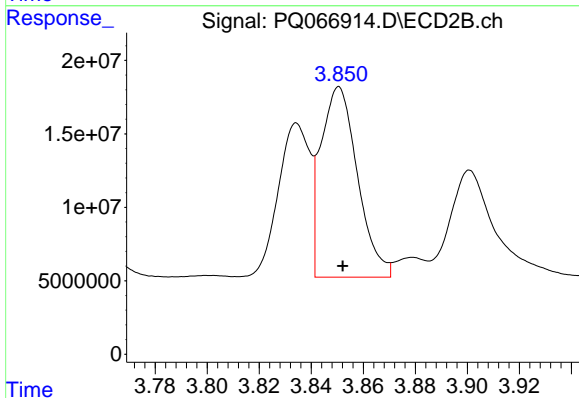
R.T.: 3.834 min  
 Delta R.T.: 0.000 min  
 Response: 88550805  
 Conc: 509.08 ng/ml



#17 AR-1242-2

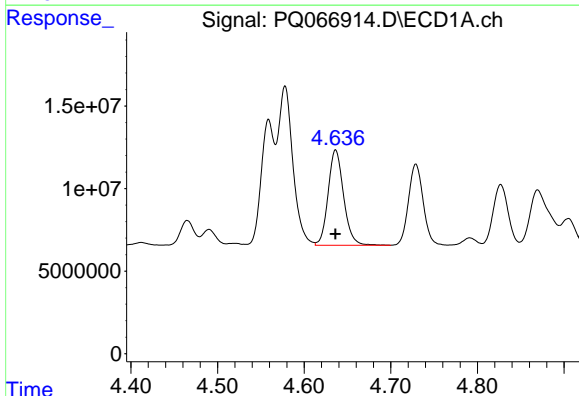
R.T.: 4.578 min  
 Delta R.T.: 0.000 min  
 Response: 115822691  
 Conc: 526.35 ng/ml

Instrument :  
 ECD\_Q  
 ClientSampleId :  
 AR1242CCC500



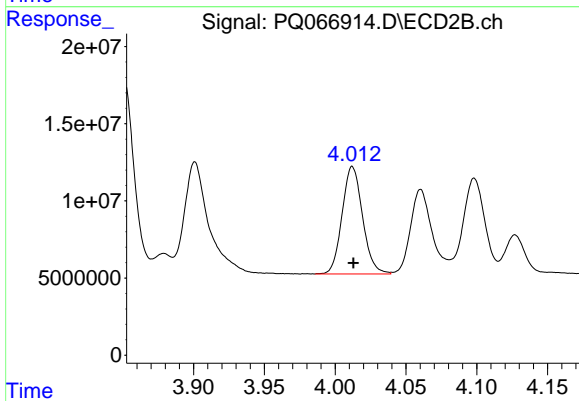
#17 AR-1242-2

R.T.: 3.851 min  
 Delta R.T.: -0.001 min  
 Response: 126805026  
 Conc: 508.80 ng/ml



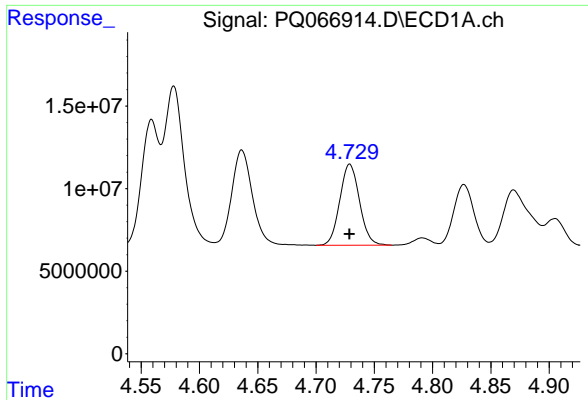
#18 AR-1242-3

R.T.: 4.636 min  
 Delta R.T.: 0.000 min  
 Response: 71454041  
 Conc: 530.84 ng/ml



#18 AR-1242-3

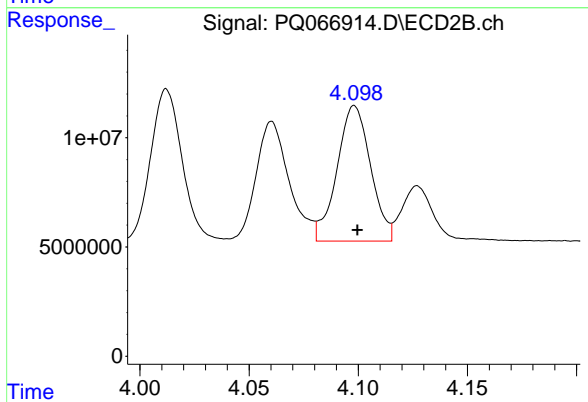
R.T.: 4.012 min  
 Delta R.T.: 0.000 min  
 Response: 70115235  
 Conc: 502.43 ng/ml



#19 AR-1242-4

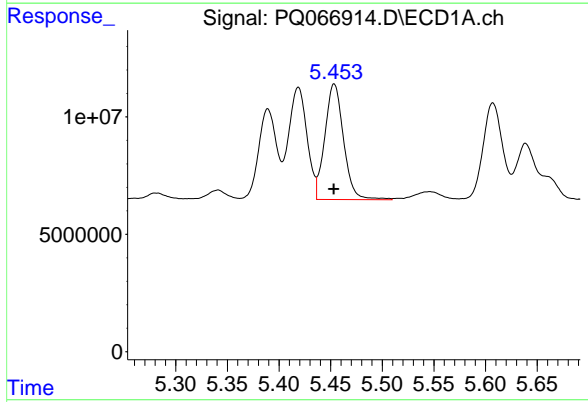
R.T.: 4.729 min  
 Delta R.T.: 0.000 min  
 Response: 57783275  
 Conc: 545.98 ng/ml

Instrument :  
 ECD\_Q  
 ClientSampleId :  
 AR1242CCC500



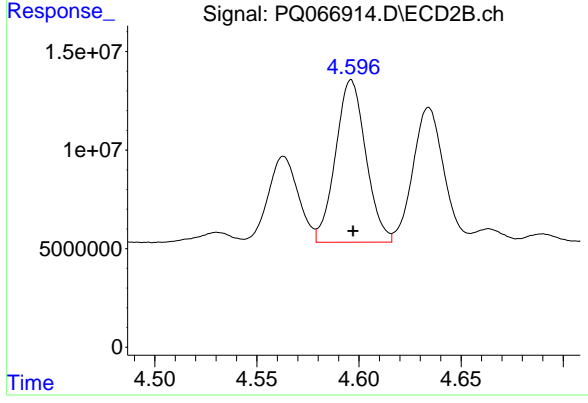
#19 AR-1242-4

R.T.: 4.098 min  
 Delta R.T.: -0.001 min  
 Response: 66470850  
 Conc: 508.92 ng/ml



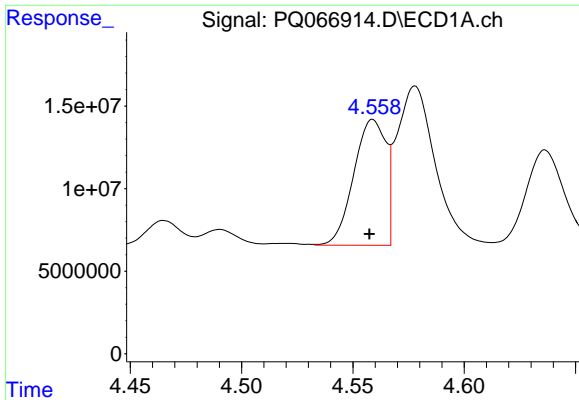
#20 AR-1242-5

R.T.: 5.453 min  
 Delta R.T.: 0.000 min  
 Response: 62228047  
 Conc: 544.78 ng/ml



#20 AR-1242-5

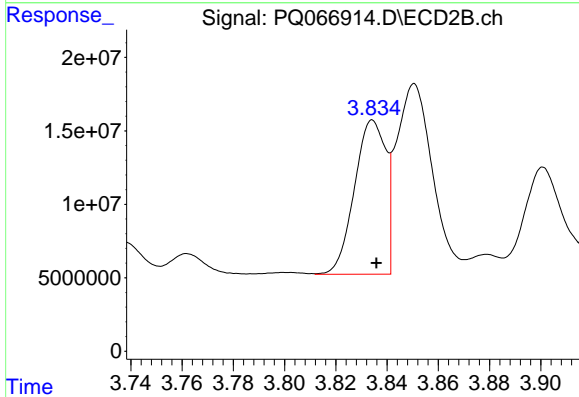
R.T.: 4.596 min  
 Delta R.T.: 0.000 min  
 Response: 84884268  
 Conc: 511.34 ng/ml



#21 AR-1248-1

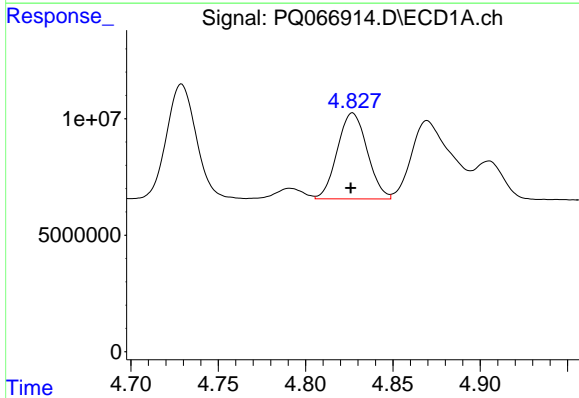
R.T.: 4.559 min  
 Delta R.T.: 0.001 min  
 Response: 76457067  
 Conc: 724.67 ng/ml

Instrument :  
 ECD\_Q  
 ClientSampleId :  
 AR1242CCC500



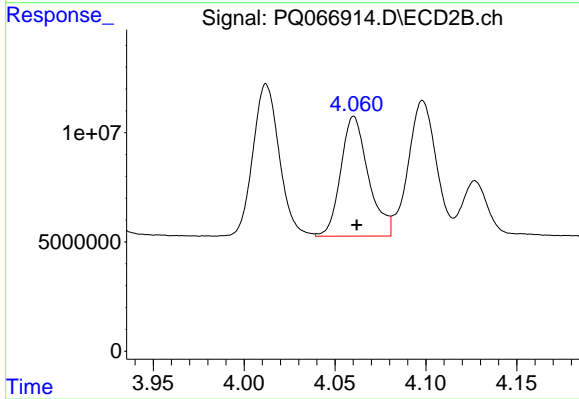
#21 AR-1248-1

R.T.: 3.834 min  
 Delta R.T.: -0.002 min  
 Response: 88550805  
 Conc: 691.79 ng/ml



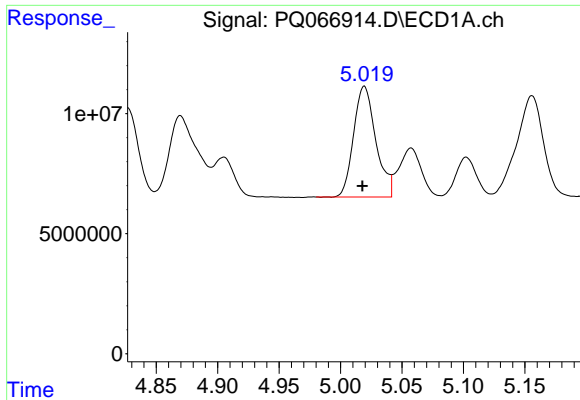
#22 AR-1248-2

R.T.: 4.827 min  
 Delta R.T.: 0.001 min  
 Response: 43971035  
 Conc: 299.89 ng/ml



#22 AR-1248-2

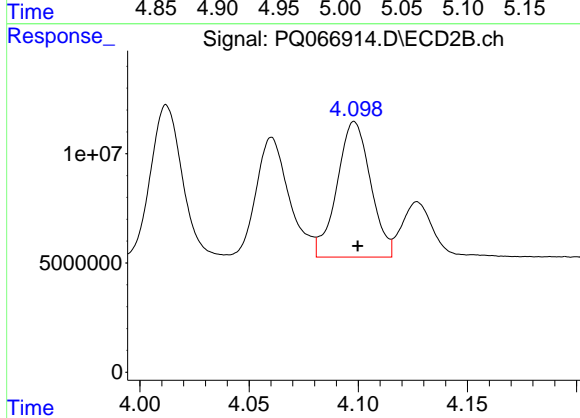
R.T.: 4.060 min  
 Delta R.T.: -0.002 min  
 Response: 58035299  
 Conc: 302.81 ng/ml



#23 AR-1248-3

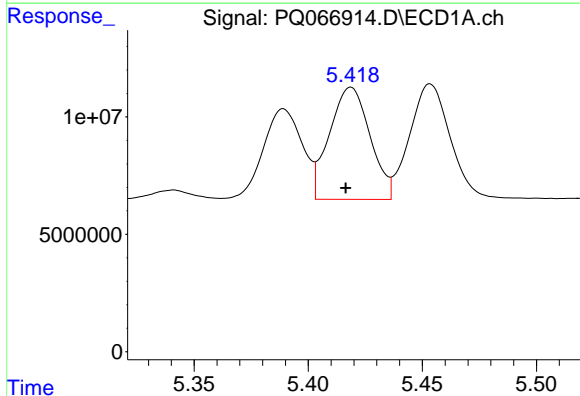
R.T.: 5.019 min  
 Delta R.T.: 0.001 min  
 Response: 58212431  
 Conc: 333.07 ng/ml

Instrument :  
 ECD\_Q  
 ClientSampleId :  
 AR1242CCC500



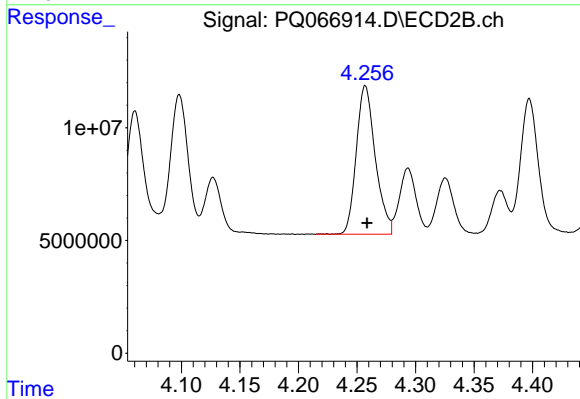
#23 AR-1248-3

R.T.: 4.098 min  
 Delta R.T.: -0.002 min  
 Response: 66470850  
 Conc: 361.12 ng/ml



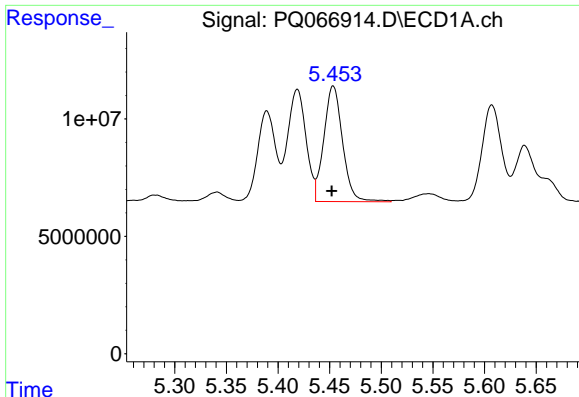
#24 AR-1248-4

R.T.: 5.419 min  
 Delta R.T.: 0.002 min  
 Response: 59174737  
 Conc: 301.68 ng/ml



#24 AR-1248-4

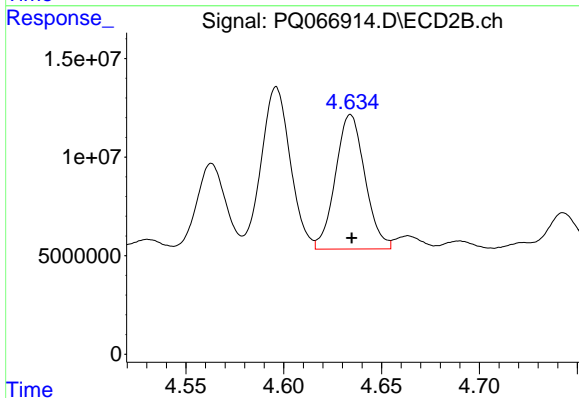
R.T.: 4.257 min  
 Delta R.T.: -0.001 min  
 Response: 74508094  
 Conc: 330.24 ng/ml



#25 AR-1248-5

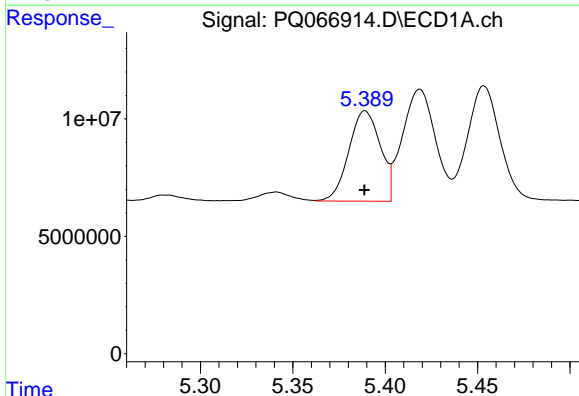
R.T.: 5.453 min  
 Delta R.T.: 0.001 min  
 Response: 62228047  
 Conc: 313.04 ng/ml

Instrument :  
 ECD\_Q  
 ClientSampleId :  
 AR1242CCC500



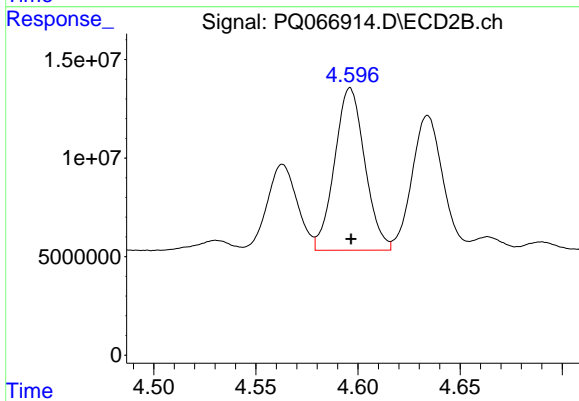
#25 AR-1248-5

R.T.: 4.634 min  
 Delta R.T.: 0.000 min  
 Response: 71628091  
 Conc: 334.75 ng/ml



#26 AR-1254-1

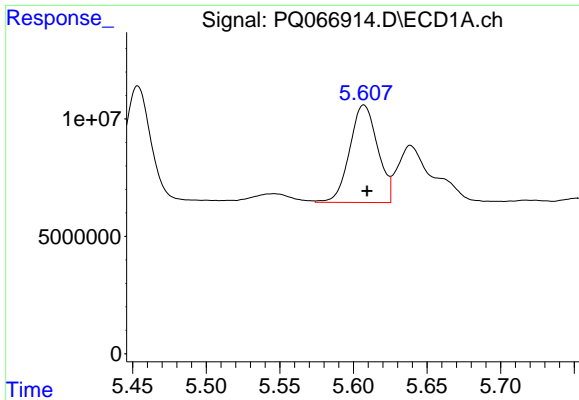
R.T.: 5.389 min  
 Delta R.T.: 0.000 min  
 Response: 45665506  
 Conc: 220.37 ng/ml



#26 AR-1254-1

R.T.: 4.596 min  
 Delta R.T.: 0.000 min  
 Response: 84884268  
 Conc: 253.13 ng/ml

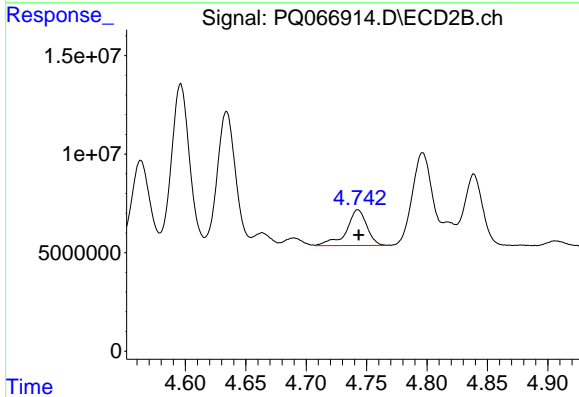




#27 AR-1254-2

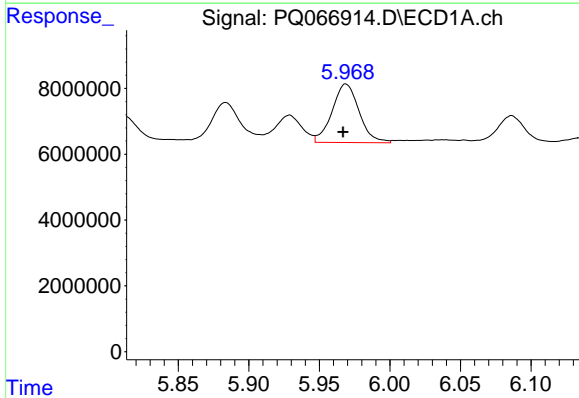
R.T.: 5.607 min  
 Delta R.T.: -0.002 min  
 Response: 54856274  
 Conc: 170.04 ng/ml

Instrument :  
 ECD\_Q  
 ClientSampleId :  
 AR1242CCC500



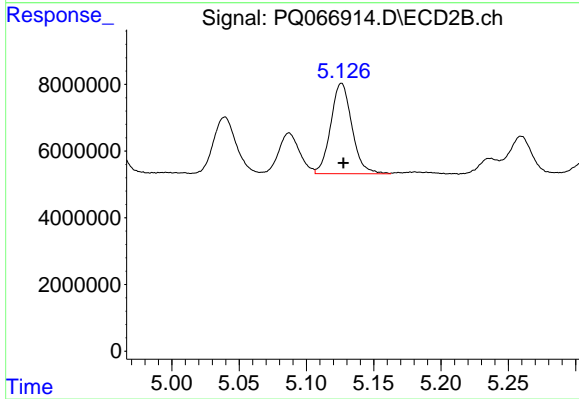
#27 AR-1254-2

R.T.: 4.743 min  
 Delta R.T.: 0.000 min  
 Response: 21323808  
 Conc: 73.87 ng/ml



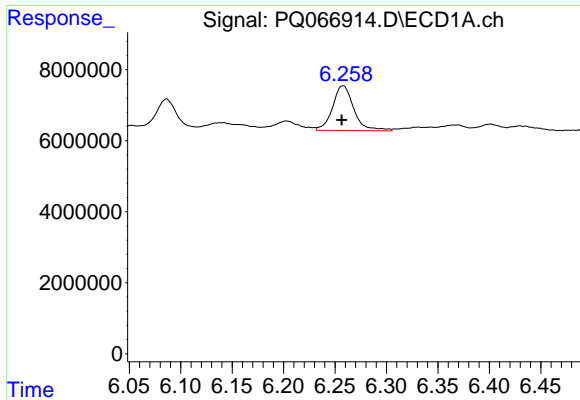
#28 AR-1254-3

R.T.: 5.969 min  
 Delta R.T.: 0.002 min  
 Response: 23713421  
 Conc: 69.86 ng/ml



#28 AR-1254-3

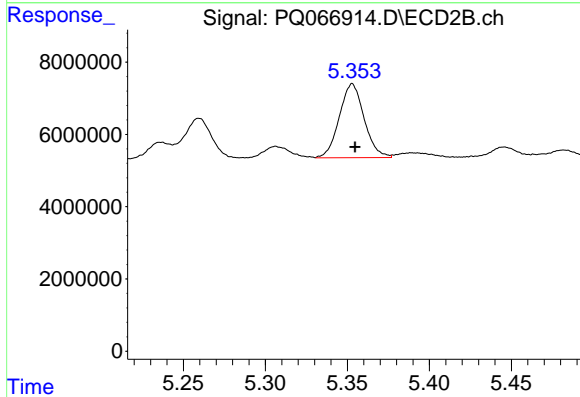
R.T.: 5.126 min  
 Delta R.T.: -0.001 min  
 Response: 29708774  
 Conc: 63.91 ng/ml



#29 AR-1254-4

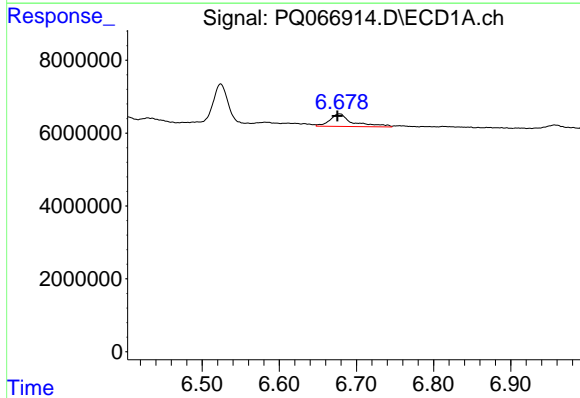
R.T.: 6.258 min  
 Delta R.T.: 0.001 min  
 Response: 18154314  
 Conc: 77.11 ng/ml

Instrument :  
 ECD\_Q  
 ClientSampleId :  
 AR1242CCC500



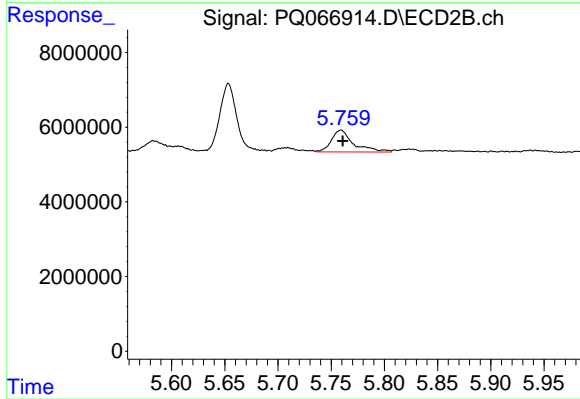
#29 AR-1254-4

R.T.: 5.353 min  
 Delta R.T.: -0.002 min  
 Response: 21531475  
 Conc: 77.29 ng/ml



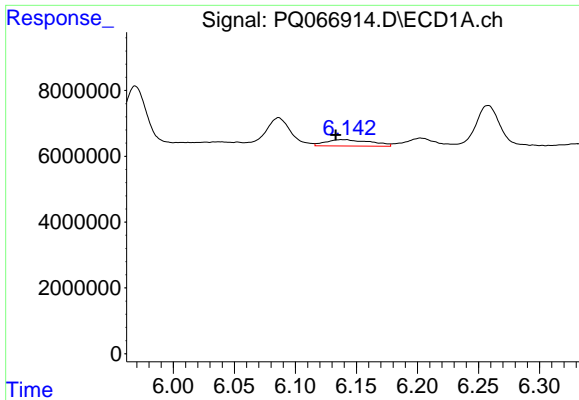
#30 AR-1254-5

R.T.: 6.679 min  
 Delta R.T.: 0.003 min  
 Response: 7114012  
 Conc: 26.85 ng/ml



#30 AR-1254-5

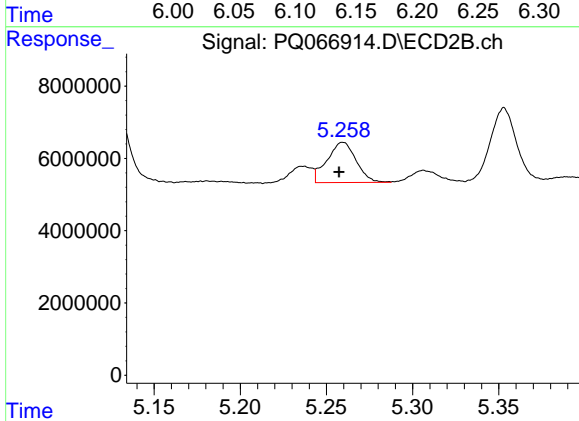
R.T.: 5.759 min  
 Delta R.T.: -0.002 min  
 Response: 8507315  
 Conc: 20.30 ng/ml



#31 AR-1260-1

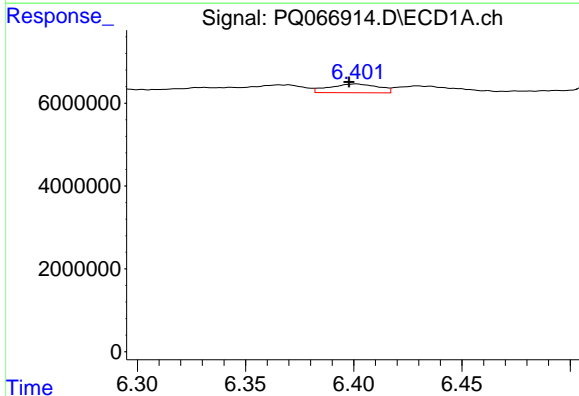
R.T.: 6.139 min  
 Delta R.T.: 0.006 min  
 Response: 4886033  
 Conc: 18.95 ng/ml

Instrument :  
 ECD\_Q  
 ClientSampleId :  
 AR1242CCC500



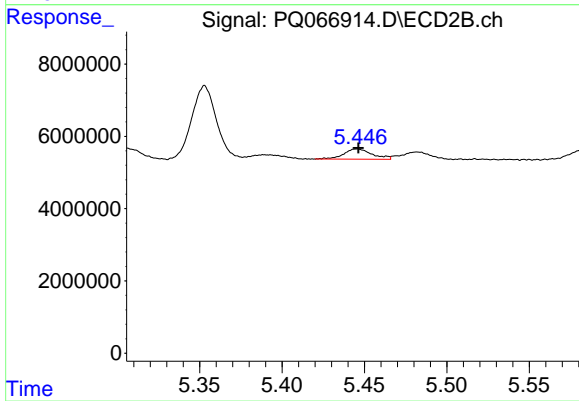
#31 AR-1260-1

R.T.: 5.260 min  
 Delta R.T.: 0.002 min  
 Response: 13074326  
 Conc: 39.50 ng/ml



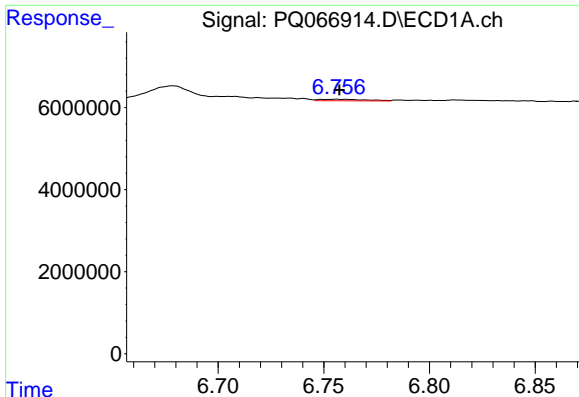
#32 AR-1260-2

R.T.: 6.401 min  
 Delta R.T.: 0.003 min  
 Response: 3334077  
 Conc: 10.97 ng/ml



#32 AR-1260-2

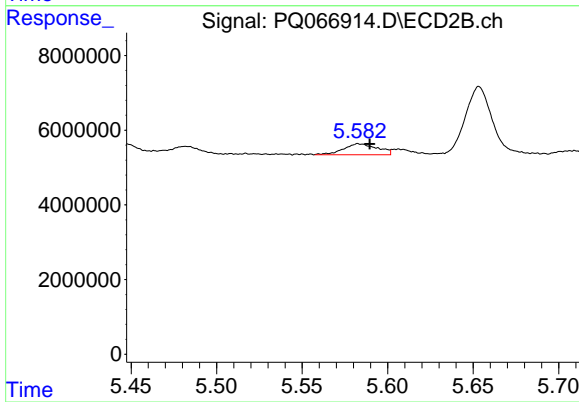
R.T.: 5.446 min  
 Delta R.T.: 0.000 min  
 Response: 3379279  
 Conc: 8.64 ng/ml



#33 AR-1260-3

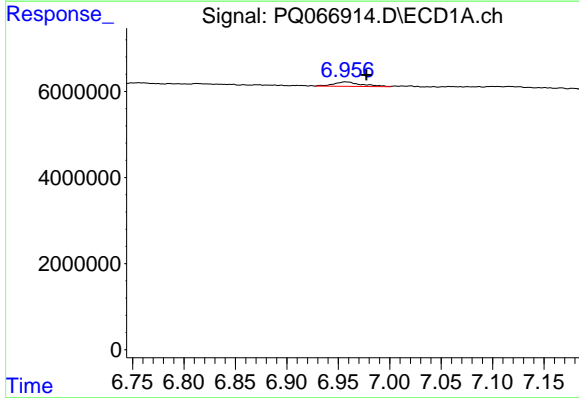
R.T.: 6.756 min  
 Delta R.T.: -0.002 min  
 Response: 545158  
 Conc: 2.46 ng/ml

Instrument :  
 ECD\_Q  
 ClientSampleId :  
 AR1242CCC500



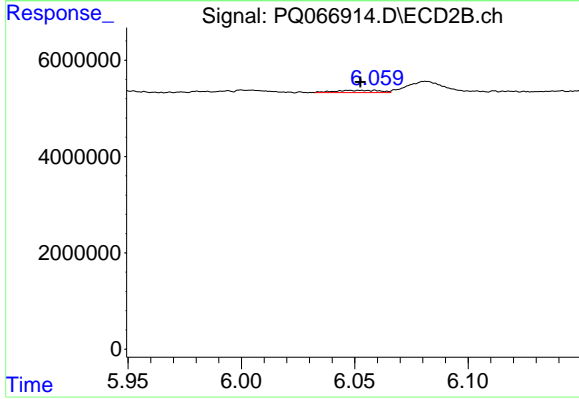
#33 AR-1260-3

R.T.: 5.583 min  
 Delta R.T.: -0.006 min  
 Response: 4061165  
 Conc: 10.72 ng/ml



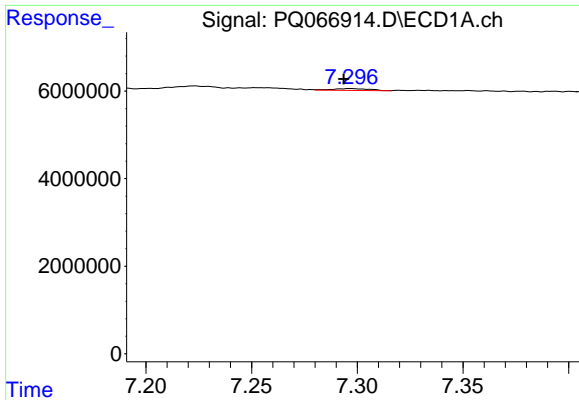
#34 AR-1260-4

R.T.: 6.957 min  
 Delta R.T.: -0.021 min  
 Response: 1931046  
 Conc: 7.97 ng/ml



#34 AR-1260-4

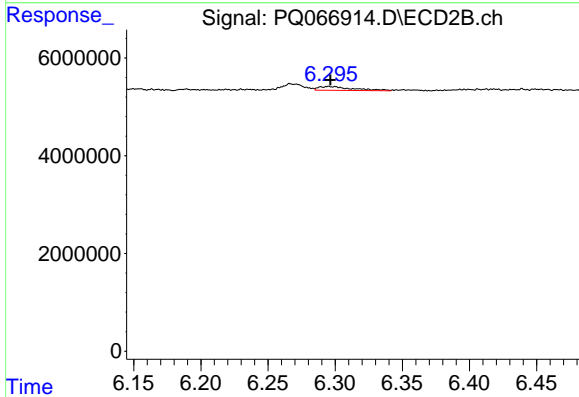
R.T.: 6.053 min  
 Delta R.T.: 0.000 min  
 Response: 642200  
 Conc: 2.04 ng/ml



#35 AR-1260-5

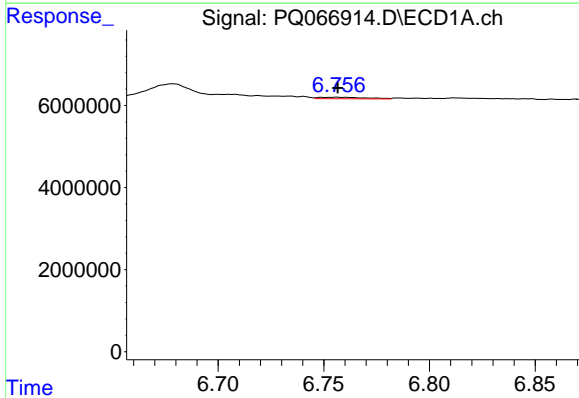
R.T.: 7.297 min  
 Delta R.T.: 0.003 min  
 Response: 514750  
 Conc: 1.05 ng/ml

Instrument :  
 ECD\_Q  
 ClientSampleId :  
 AR1242CCC500



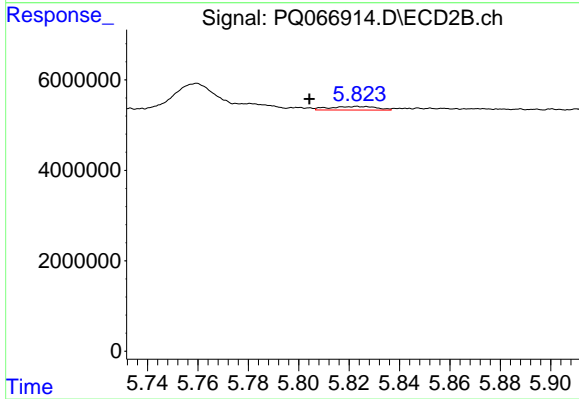
#35 AR-1260-5

R.T.: 6.295 min  
 Delta R.T.: -0.001 min  
 Response: 1402721  
 Conc: 2.13 ng/ml



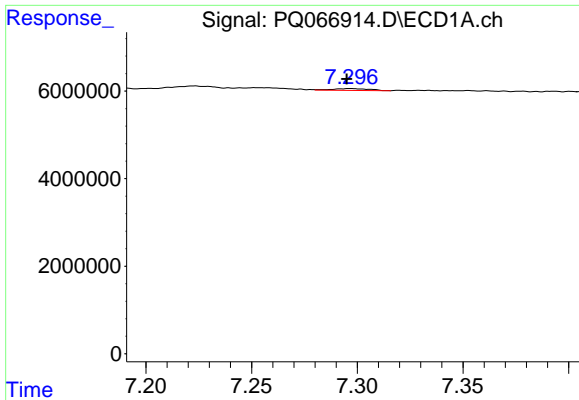
#36 AR-1262-1

R.T.: 6.756 min  
 Delta R.T.: 0.000 min  
 Response: 545158  
 Conc: 1.65 ng/ml



#36 AR-1262-1

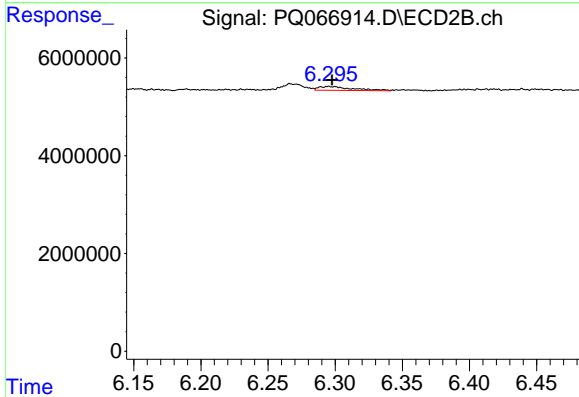
R.T.: 5.823 min  
 Delta R.T.: 0.019 min  
 Response: 1026739  
 Conc: 2.38 ng/ml



#37 AR-1262-2

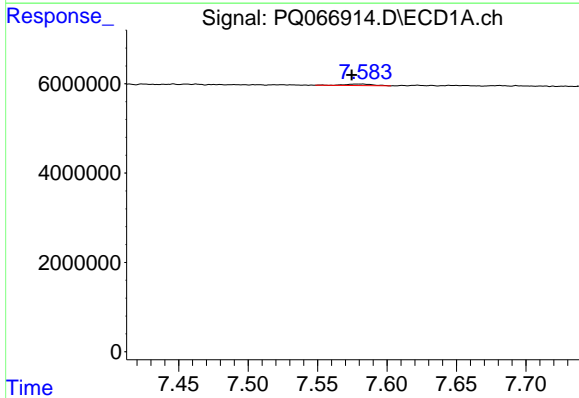
R.T.: 7.297 min  
 Delta R.T.: 0.002 min  
 Response: 514750  
 Conc: 0.96 ng/ml

Instrument :  
 ECD\_Q  
 ClientSampleId :  
 AR1242CCC500



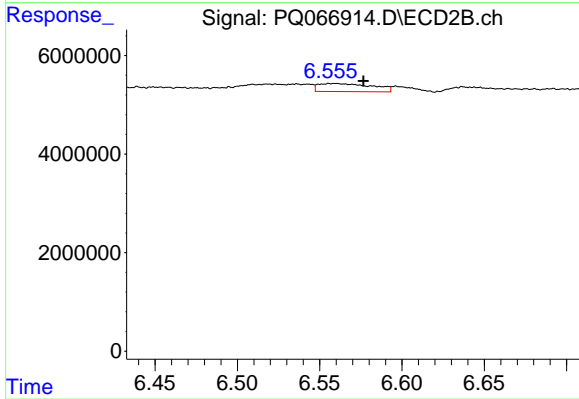
#37 AR-1262-2

R.T.: 6.295 min  
 Delta R.T.: -0.003 min  
 Response: 1402721  
 Conc: 1.92 ng/ml



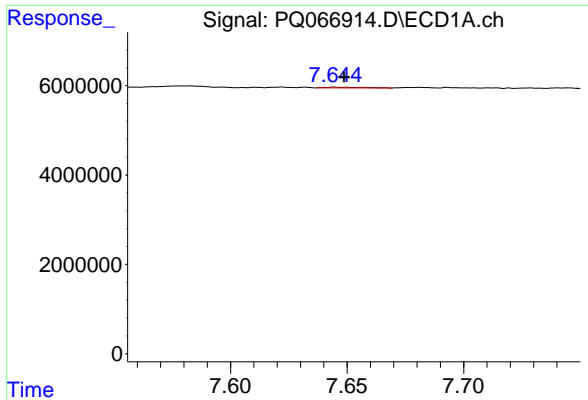
#38 AR-1262-3

R.T.: 7.579 min  
 Delta R.T.: 0.005 min  
 Response: 457953  
 Conc: 1.30 ng/ml



#38 AR-1262-3

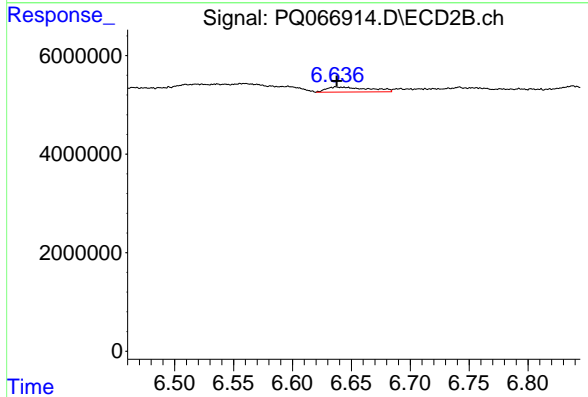
R.T.: 6.560 min  
 Delta R.T.: -0.017 min  
 Response: 3721100  
 Conc: 11.95 ng/ml



#39 AR-1262-4

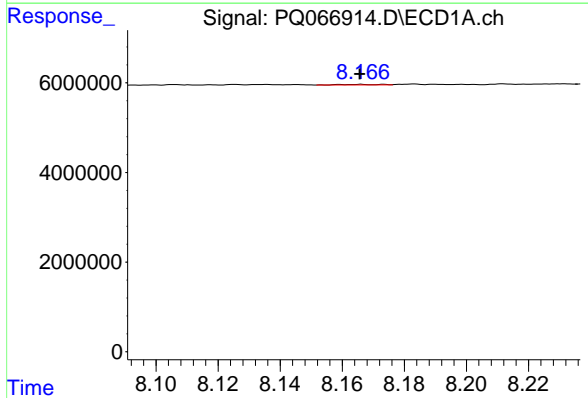
R.T.: 7.645 min  
 Delta R.T.: -0.004 min  
 Response: 190017  
 Conc: 0.70 ng/ml

Instrument :  
 ECD\_Q  
 ClientSampleId :  
 AR1242CCC500



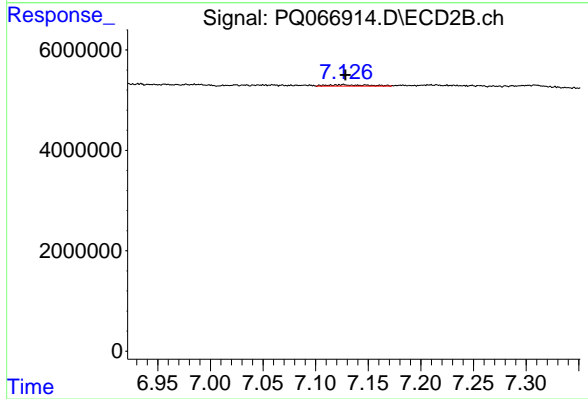
#39 AR-1262-4

R.T.: 6.637 min  
 Delta R.T.: 0.000 min  
 Response: 2637205  
 Conc: 4.62 ng/ml



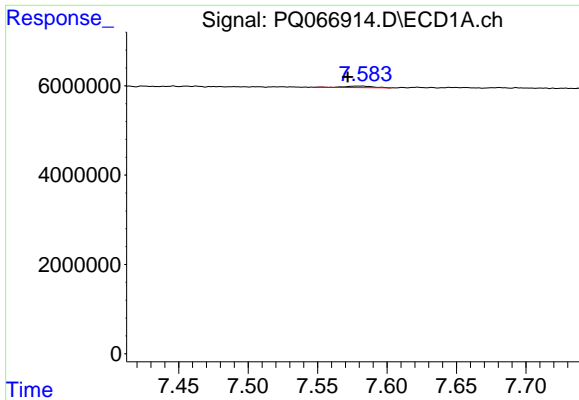
#40 AR-1262-5

R.T.: 8.166 min  
 Delta R.T.: 0.000 min  
 Response: 132248  
 Conc: 0.79 ng/ml



#40 AR-1262-5

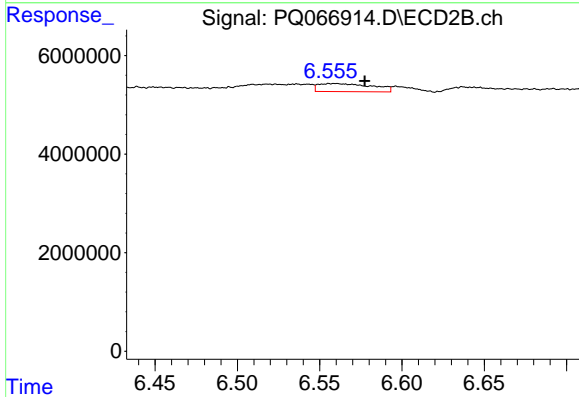
R.T.: 7.127 min  
 Delta R.T.: -0.002 min  
 Response: 653931  
 Conc: 2.52 ng/ml



#41 AR-1268-1

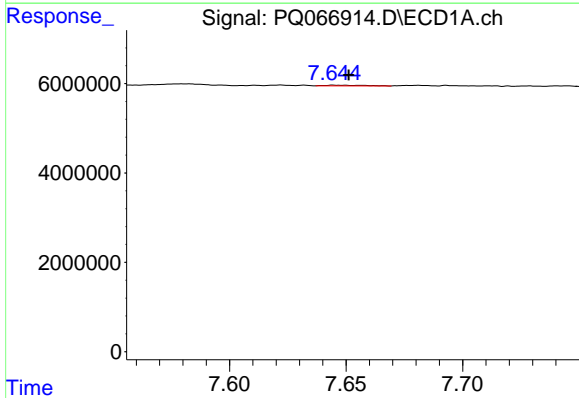
R.T.: 7.579 min  
 Delta R.T.: 0.008 min  
 Response: 457953  
 Conc: 0.76 ng/ml

Instrument :  
 ECD\_Q  
 ClientSampleId :  
 AR1242CCC500



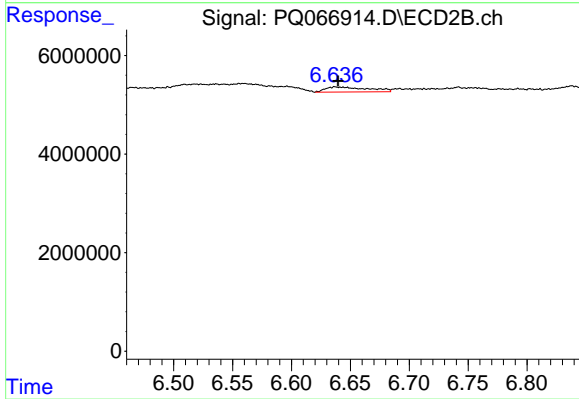
#41 AR-1268-1

R.T.: 6.560 min  
 Delta R.T.: -0.018 min  
 Response: 3721100  
 Conc: 4.24 ng/ml



#42 AR-1268-2

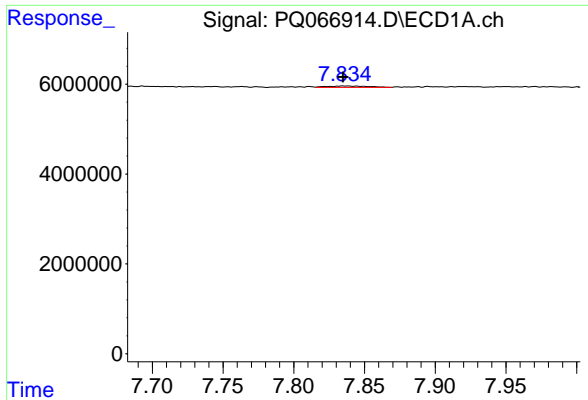
R.T.: 7.645 min  
 Delta R.T.: -0.006 min  
 Response: 190017  
 Conc: 0.35 ng/ml



#42 AR-1268-2

R.T.: 6.637 min  
 Delta R.T.: -0.002 min  
 Response: 2637205  
 Conc: 3.29 ng/ml

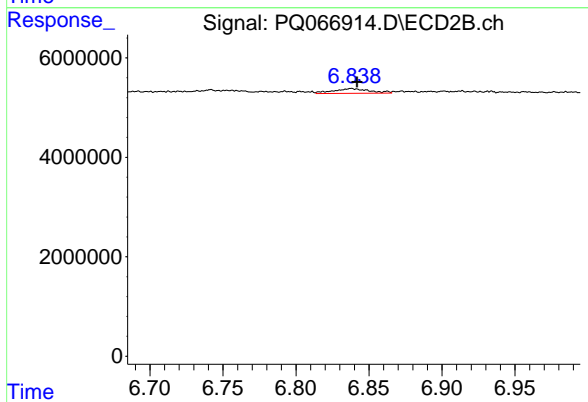




#43 AR-1268-3

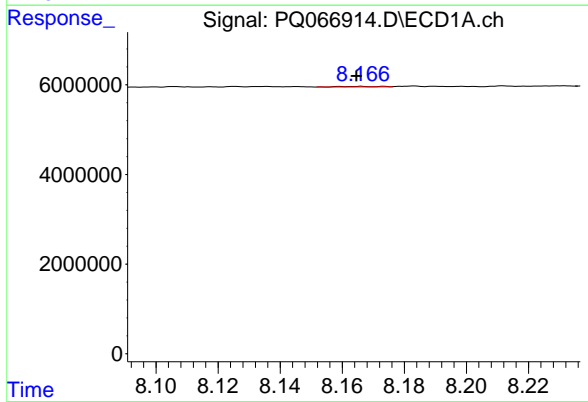
R.T.: 7.835 min  
 Delta R.T.: 0.000 min  
 Response: 675355  
 Conc: 1.45 ng/ml

Instrument :  
 ECD\_Q  
 ClientSampleId :  
 AR1242CCC500



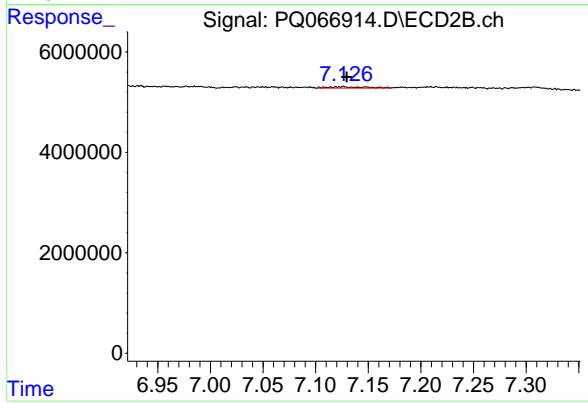
#43 AR-1268-3

R.T.: 6.838 min  
 Delta R.T.: -0.004 min  
 Response: 1637291  
 Conc: 2.36 ng/ml



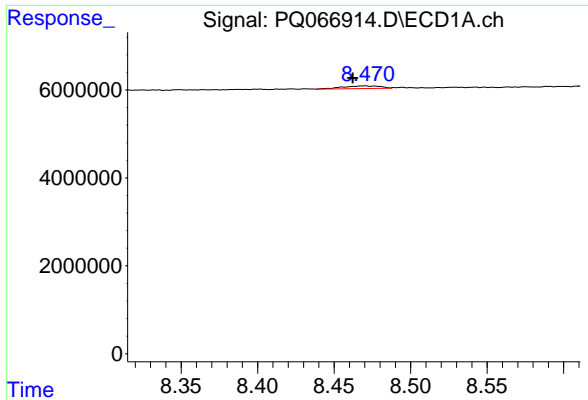
#44 AR-1268-4

R.T.: 8.166 min  
 Delta R.T.: 0.001 min  
 Response: 132248  
 Conc: 0.75 ng/ml



#44 AR-1268-4

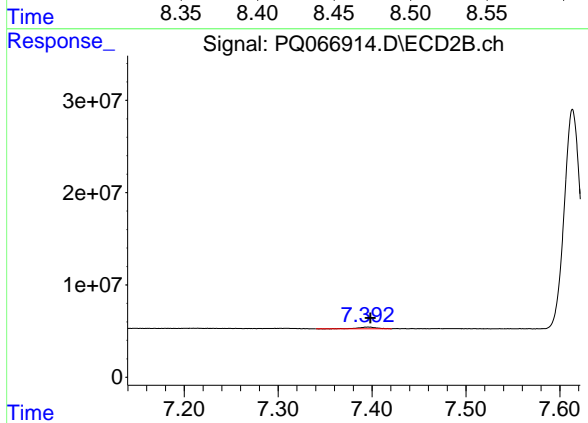
R.T.: 7.127 min  
 Delta R.T.: -0.003 min  
 Response: 653931  
 Conc: 2.31 ng/ml



#45 AR-1268-5

R.T.: 8.470 min  
 Delta R.T.: 0.008 min  
 Response: 1057897  
 Conc: 0.79 ng/ml

Instrument :  
 ECD\_Q  
 ClientSampleId :  
 AR1242CCC500



#45 AR-1268-5

R.T.: 7.396 min  
 Delta R.T.: -0.002 min  
 Response: 2520752  
 Conc: 1.23 ng/ml