

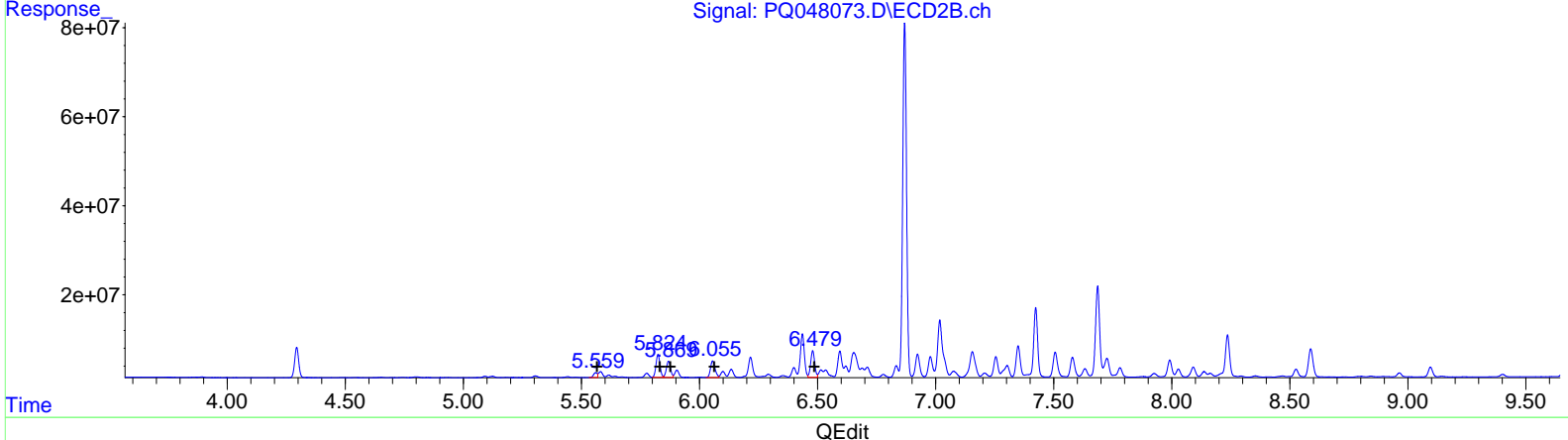
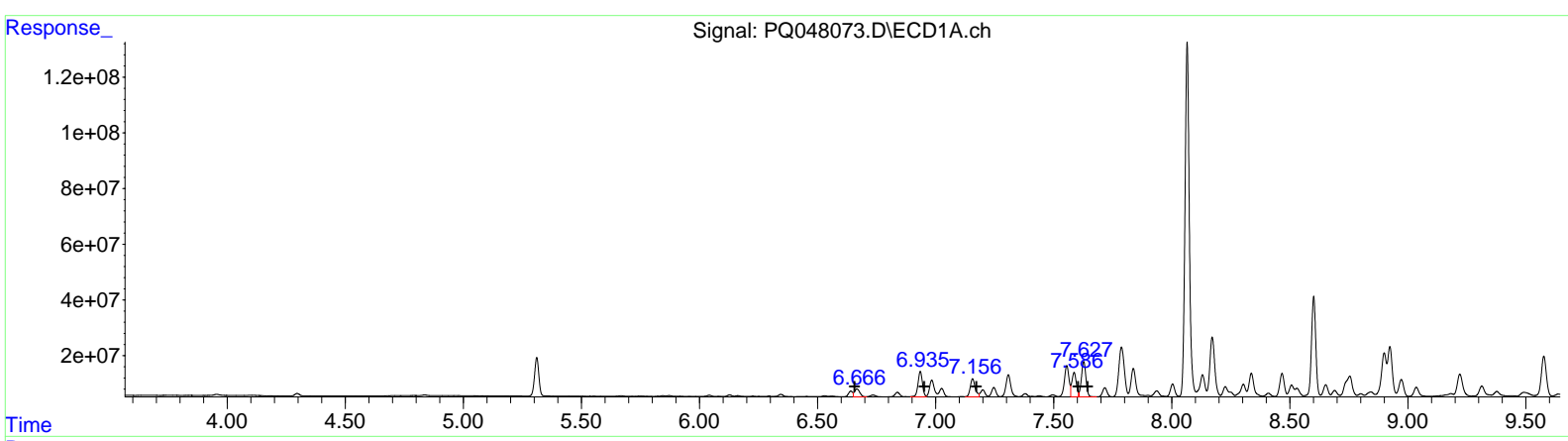
Data Path : Z:\pestpcbsrv\HPCHEM1\ECD_Q\Data\PQ060520\
 Data File : PQ048073.D
 Signal(s) : Signal #1: ECD1A.ch Signal #2: ECD2B.ch
 Acq On : 05 Jun 2020 15:19
 Operator : AJ\MA
 Sample : L2877-12
 Misc :
 ALS Vial : 19 Sample Multiplier: 1

Instrument :
 ECD_Q
ClientSampled :
 ETX22

Manual Integrations
APPROVED
 Sohil
 6/9/2020 8:18:33 AM

Integration File signal 1: autoint1.e
 Integration File signal 2: autoint2.e
 Quant Time: Jun 06 02:03:21 2020
 Quant Method : Z:\pestpcbsrv\HPCHEM1\ECD_Q\Method\PQ051820CLP.M
 Quant Title : GC EXTRACTABLES
 QLast Update : Tue May 19 03:16:23 2020
 Response via : Initial Calibration
 Integrator: ChemStation

Volume Inj. : 1 µl
 Signal #1 Phase : ZB MR1 Signal #2 Phase: ZB MR2
 Signal #1 Info : 30Mx0.32mmx 0.5µm Signal #2 Info : 30M x 0.32mm x 0.25µm



(21) AR-1248-1 (L5)

R.T.	Response	Conc
6.67	44549935	263.34
6.94	119614389	532.94
7.16	94285382	376.41
7.59	115412970	404.92
7.63	168274321	616.63

(21) AR-1248-1 #2 (L5)

R.T.	Response	Conc
5.56	12037226	157.77
5.82	60923934	606.45
5.87	45365284	445.38
6.06	50238477	427.86
6.48	71746472	578.80

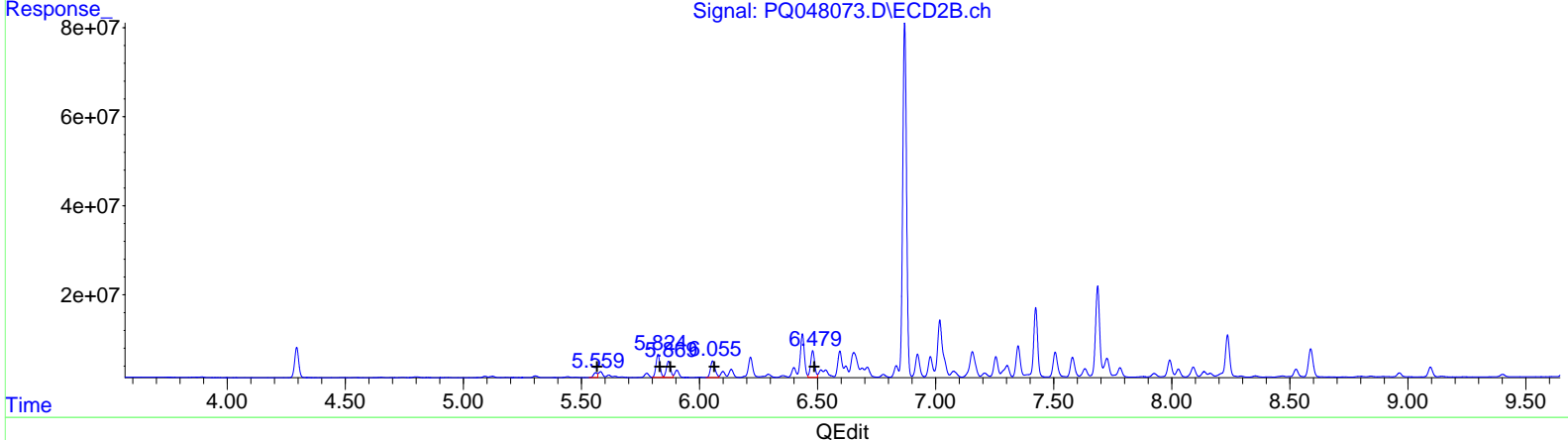
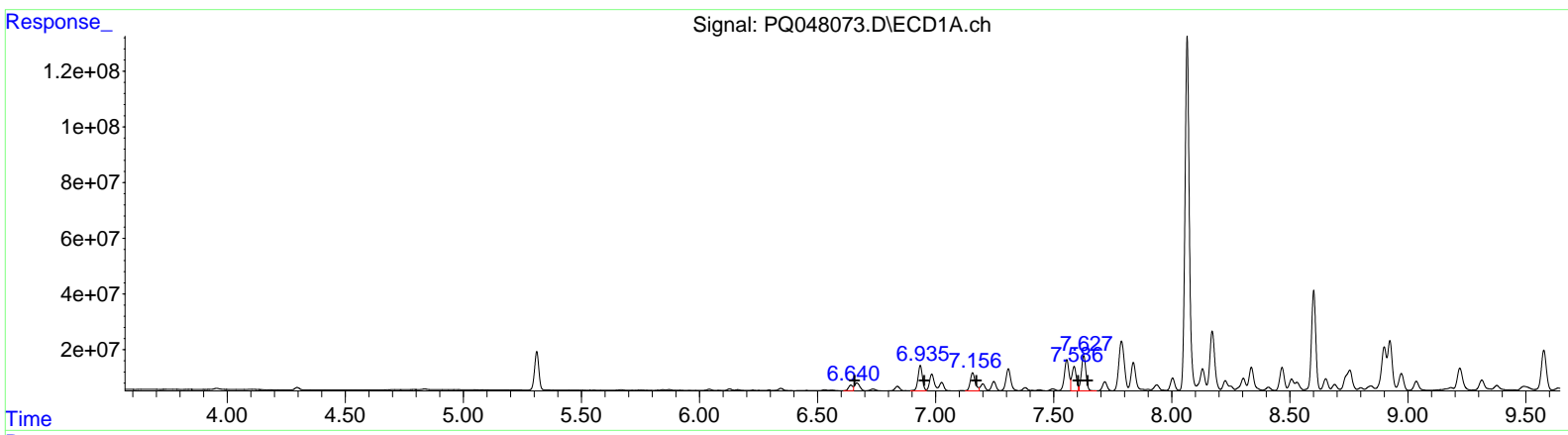
Data Path : Z:\pestpcbsrv\HPCHEM1\ECD_Q\Data\PQ060520\
 Data File : PQ048073.D
 Signal(s) : Signal #1: ECD1A.ch Signal #2: ECD2B.ch
 Acq On : 05 Jun 2020 15:19
 Operator : AJ\MA
 Sample : L2877-12
 Misc :
 ALS Vial : 19 Sample Multiplier: 1

Instrument :
 ECD_Q
Client Sampled :
 ETX22

Manual Integrations
APPROVED
 Sohil
 6/9/2020 8:18:33 AM

Integration File signal 1: autoint1.e
 Integration File signal 2: autoint2.e
 Quant Time: Jun 06 02:03:21 2020
 Quant Method : Z:\pestpcbsrv\HPCHEM1\ECD_Q\Method\PQ051820CLP.M
 Quant Title : GC EXTRACTABLES
 QLast Update : Tue May 19 03:16:23 2020
 Response via : Initial Calibration
 Integrator: ChemStation

Volume Inj. : 1 µl
 Signal #1 Phase : ZB MR1 Signal #2 Phase: ZB MR2
 Signal #1 Info : 30Mx0.32mmx 0.5µm Signal #2 Info : 30M x 0.32mm x 0.25µm



(21) AR-1248-1 #2 (L5)

R.T.	Response	Conc
6.64	26659926	157.59
6.94	119614389	532.94
7.16	94285382	376.41
7.59	115412970	404.92
7.63	168274321	616.63

(21) AR-1248-1 #2 (L5)

R.T.	Response	Conc
5.56	12037226	157.77
5.82	60923934	606.45
5.87	45365284	445.38
6.06	50238477	427.86
6.48	71746472	578.80

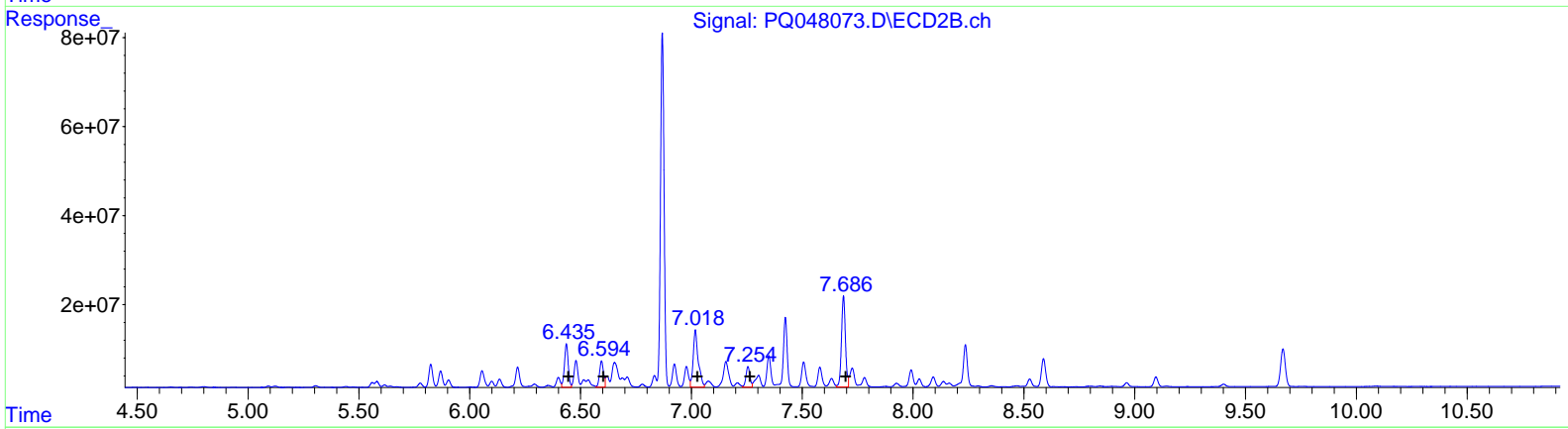
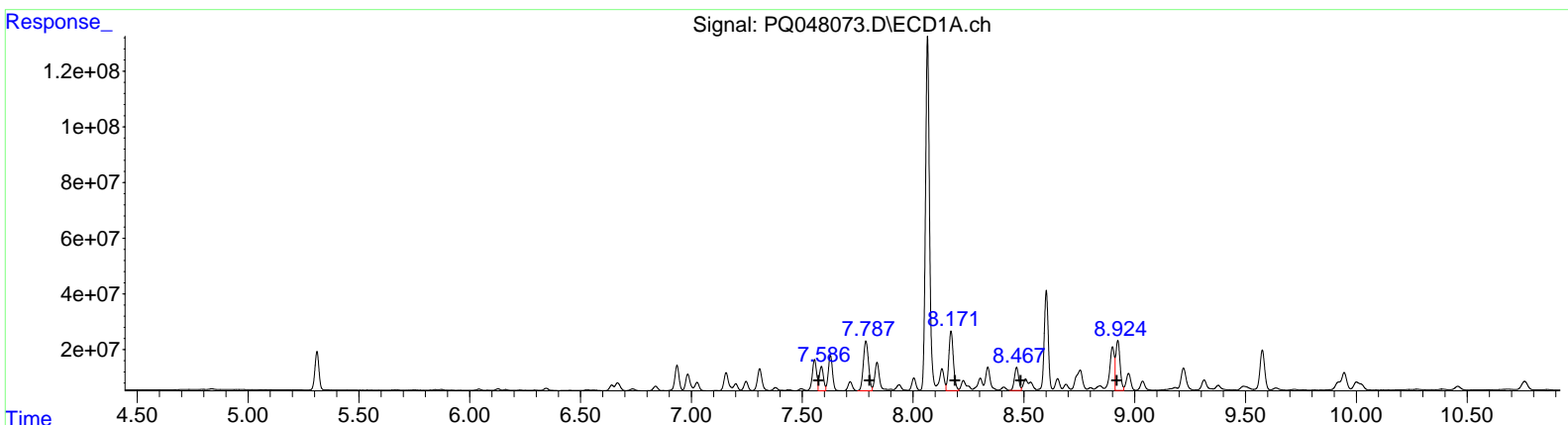
Data Path : Z:\pestpcbsrv\HPCHEM1\ECD_Q\Data\PQ060520\
 Data File : PQ048073.D
 Signal(s) : Signal #1: ECD1A.ch Signal #2: ECD2B.ch
 Acq On : 05 Jun 2020 15:19
 Operator : AJ\MA
 Sample : L2877-12
 Misc :
 ALS Vial : 19 Sample Multiplier: 1

Instrument :
 ECD_Q
ClientSampled :
 ETX22

Manual Integrations
APPROVED
 Sohil
 6/9/2020 8:18:33 AM

Integration File signal 1: autoint1.e
 Integration File signal 2: autoint2.e
 Quant Time: Jun 06 02:03:21 2020
 Quant Method : Z:\pestpcbsrv\HPCHEM1\ECD_Q\Method\PQ051820CLP.M
 Quant Title : GC EXTRACTABLES
 QLast Update : Tue May 19 03:16:23 2020
 Response via : Initial Calibration
 Integrator: ChemStation

Volume Inj. : 1 µl
 Signal #1 Phase : ZB MR1 Signal #2 Phase: ZB MR2
 Signal #1 Info : 30Mx0.32mmx 0.5µm Signal #2 Info : 30M x 0.32mm x 0.25µm



QEdit

(26) AR-1254-1 (L6)		
R.T.	Response	Conc
7.59	115412970	402.80
7.79	290756612	655.11
8.17	309834833	646.08
8.47	111447394	302.61
8.92	243329945	605.18
(26) AR-1254-1 #2 (L6)		
R.T.	Response	Conc
6.44	116172059	595.66
6.59	74056891	430.90
7.02	202486921	710.78
7.26	57263119	307.98
7.69	255415904	999.06

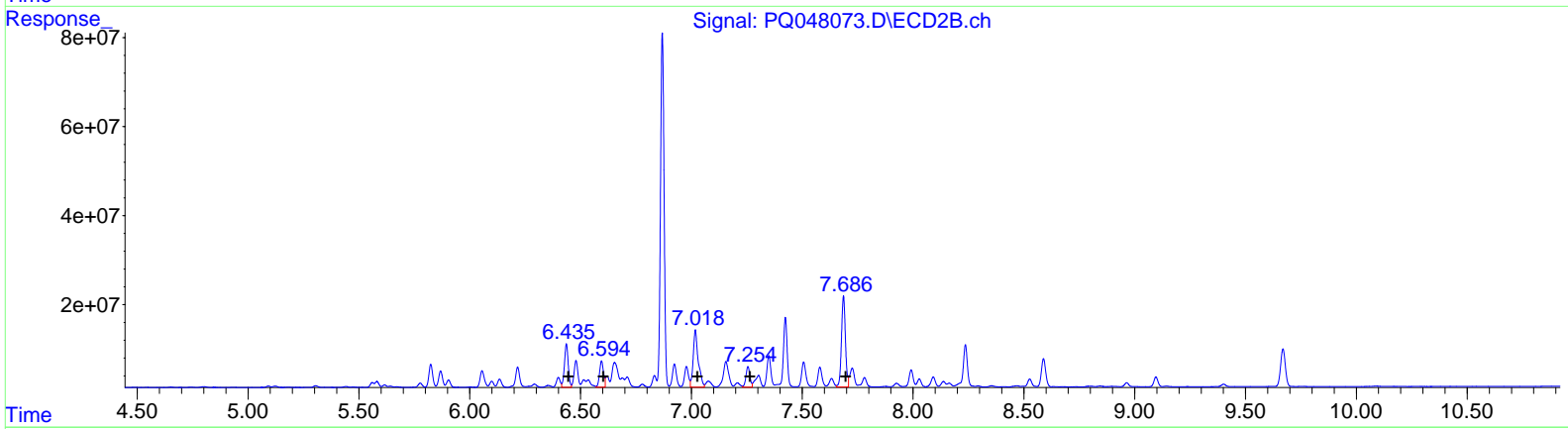
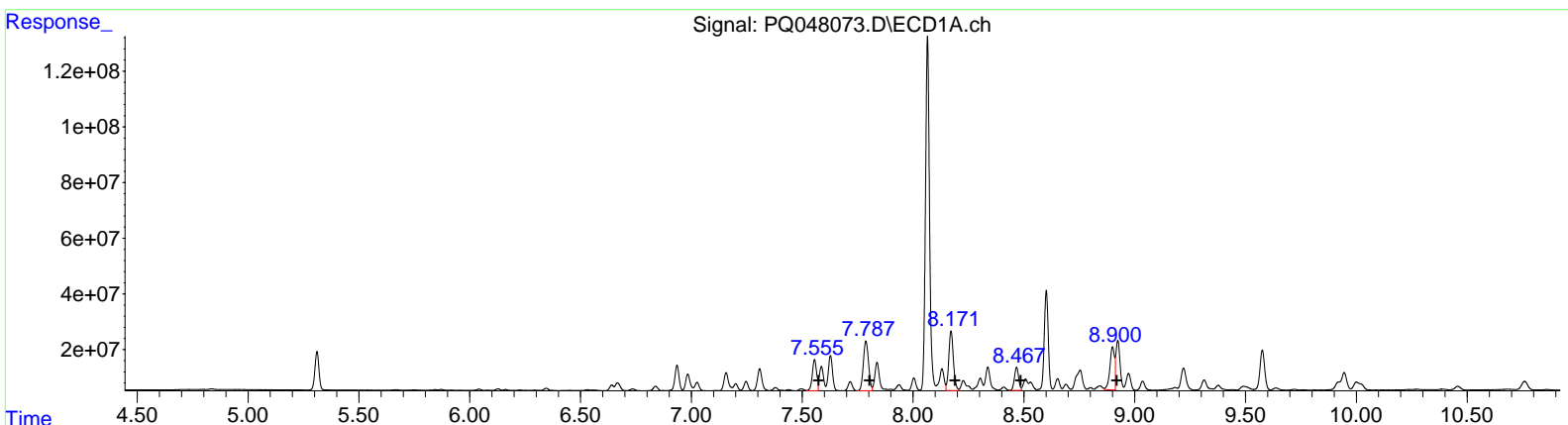
Data Path : Z:\pestpcbsrv\HPCHEM1\ECD_Q\Data\PQ060520\
 Data File : PQ048073.D
 Signal(s) : Signal #1: ECD1A.ch Signal #2: ECD2B.ch
 Acq On : 05 Jun 2020 15:19
 Operator : AJ\MA
 Sample : L2877-12
 Misc :
 ALS Vial : 19 Sample Multiplier: 1

Instrument :
 ECD_Q
ClientSampled :
 ETX22

Manual Integrations
APPROVED
 Sohil
 6/9/2020 8:18:33 AM

Integration File signal 1: autoint1.e
 Integration File signal 2: autoint2.e
 Quant Time: Jun 06 02:03:21 2020
 Quant Method : Z:\pestpcbsrv\HPCHEM1\ECD_Q\Method\PQ051820CLP.M
 Quant Title : GC EXTRACTABLES
 QLast Update : Tue May 19 03:16:23 2020
 Response via : Initial Calibration
 Integrator: ChemStation

Volume Inj. : 1 µl
 Signal #1 Phase : ZB MR1 Signal #2 Phase: ZB MR2
 Signal #1 Info : 30Mx0.32mmx 0.5µm Signal #2 Info : 30M x 0.32mm x 0.25µm



QEdit

(26) AR-1254-1 #2 (L6)		
R.T.	Response	Conc
7.56	153007978	534.01
7.79	290756612	655.11
8.17	309834833	646.08
8.47	111447394	302.61
8.90	231878966	576.70
(26) AR-1254-1 #2 (L6)		
R.T.	Response	Conc
6.44	116172059	595.66
6.59	74056891	430.90
7.02	202486921	710.78
7.26	57263119	307.98
7.69	255415904	999.06

Data Path : Z:\pestpcbsrv\HPCHEM1\ECD_Q\Data\PQ060520\
 Data File : PQ048073.D
 Signal(s) : Signal #1: ECD1A.ch Signal #2: ECD2B.ch
 Acq On : 05 Jun 2020 15:19
 Operator : AJ\MA
 Sample : L2877-12
 Misc :
 ALS Vial : 19 Sample Multiplier: 1

Instrument :
 ECD_Q
Client Sampled :
 ETX22

Manual Integrations
APPROVED
 Sohil
 6/9/2020 8:18:33 AM

Integration File signal 1: autoint1.e
 Integration File signal 2: autoint2.e
 Quant Time: Jun 06 02:03:21 2020
 Quant Method : Z:\pestpcbsrv\HPCHEM1\ECD_Q\Method\PQ051820CLP.M
 Quant Title : GC EXTRACTABLES
 QLast Update : Tue May 19 03:16:23 2020
 Response via : Initial Calibration
 Integrator: ChemStation

Volume Inj. : 1 µl
 Signal #1 Phase : ZB MR1 Signal #2 Phase: ZB MR2
 Signal #1 Info : 30Mx0.32mmx 0.5µm Signal #2 Info : 30M x 0.32mm x 0.25µm

Compound	RT#1	RT#2	Resp#1	Resp#2	ng/ml	ng/ml
System Monitoring Compounds						
1) SA Tetrachlo...	5.311	4.294	175.9E6	82174842	22.508	26.070
2) SA Decachlor...	11.599	9.669	272.5E6	125.7E6	39.137	39.105
Target Compounds						
21) L5 AR-1248-1	6.640	5.560	26659926	12037226	157.593m	157.773
22) L5 AR-1248-2	6.935	5.824	119.6E6	60923934	532.943	606.454
23) L5 AR-1248-3	7.157	5.869	94285382	45365284	376.405	445.385
24) L5 AR-1248-4	7.587	6.056	115.4E6	50238477	404.921	427.857
25) L5 AR-1248-5	7.627	6.480	168.3E6	71746472	616.629	578.804
26) L6 AR-1254-1	7.555	6.436	153.0E6	116.2E6	534.010m	595.664
27) L6 AR-1254-2	7.787	6.595	290.8E6	74056891	655.114	430.903 #
28) L6 AR-1254-3	8.171	7.018	309.8E6	202.5E6	646.075	710.785
29) L6 AR-1254-4	8.467	7.255	111.4E6	57263119	302.612	307.977
30) L6 AR-1254-5	8.900	7.686	231.9E6	255.4E6	576.702m	999.061 #
31) L7 AR-1260-1	8.337	7.156	122.8E6	97112229	362.374	552.697 #
32) L7 AR-1260-2	8.601	7.350	456.0E6	88276118	1101.949	405.096 #
33) L7 AR-1260-3	8.972	7.507	87717943	77090185	271.401	387.491 #
34) L7 AR-1260-4	9.220	7.992	131.2E6	50549140	342.953	292.089
35) L7 AR-1260-5	9.576	8.236	217.0E6	130.4E6	278.852	305.590

SJ
 06/10/20

(f)=RT Delta > 1/2 Window (#)=Amounts differ by > 25% (m)=manual int.