

Data Path : Z:\pestpcbsrv\HPCHEM1\ECD_Q\Data\PQ060624\
 Data File : PQ066978.D
 Signal(s) : Signal #1: ECD1A.ch Signal #2: ECD2B.ch
 Acq On : 06 Jun 2024 15:43
 Operator : YP\AJ
 Sample : AR1242CCC500
 Misc :
 ALS Vial : 4 Sample Multiplier: 1

Instrument :
 ECD_Q
 ClientSampleId :
 AR1242CCC500

Integration File signal 1: autoint1.e
 Integration File signal 2: autoint2.e
 Quant Time: Jun 06 16:03:22 2024
 Quant Method : Z:\pestpcbsrv\HPCHEM1\ECD_Q\Method\PQ053124.M
 Quant Title : GC EXTRACTABLES
 QLast Update : Mon Jun 03 10:00:54 2024
 Response via : Initial Calibration
 Integrator: ChemStation

Volume Inj. : 2 µl
 Signal #1 Phase : ZB-MR1 Signal #2 Phase: ZB-MR2
 Signal #1 Info : 30Mx0.32mmx 0.50µ Signal #2 Info : 30M x 0.32mm x 0.25µm

Compound	RT#1	RT#2	Resp#1	Resp#2	ng/ml	ng/ml
System Monitoring Compounds						
1) SA Tetrachlo...	3.447	2.824	305.3E6	310.4E6	55.124	53.055
2) SA Decachlor...	8.702	7.612	208.2E6	280.1E6	54.912	48.768
Target Compounds						
3) L1 AR-1016-1	4.557	3.833	77724631	89358132	459.161	437.091
4) L1 AR-1016-2	4.576	3.849	118.4E6	129.1E6	450.005	435.074
5) L1 AR-1016-3	4.635	4.011	72179582	71366079	449.736	434.772
6) L1 AR-1016-4	4.728	4.059	59038444	58872501	460.690	427.418
7) L1 AR-1016-5	5.018	4.255	59201296	75236362	459.666	438.462
8) L2 AR-1221-1	3.645	3.025	9660413	12012549	146.962	149.978
9) L2 AR-1221-2	3.728	3.102	13230304	14340141	273.167	274.412
10) L2 AR-1221-3	3.799	3.171	46556691	51531006	306.600	295.008
11) L3 AR-1232-1	3.799	3.171	46556691	51531006	377.144	357.237
12) L3 AR-1232-2	4.297	3.849	61779830	129.1E6	936.907	908.619
13) L3 AR-1232-3	4.576	4.011	118.4E6	71366079	982.809	916.743
14) L3 AR-1232-4	4.728	4.097	59038444	66200849	1027.121	995.521
15) L3 AR-1232-5	4.825	4.255	45018407	75236362	1125.282	1003.443
16) L4 AR-1242-1	4.557	3.833	77724631	89358132	545.081	513.724
17) L4 AR-1242-2	4.576	3.849	118.4E6	129.1E6	538.179	518.004
18) L4 AR-1242-3	4.635	4.011	72179582	71366079	536.227	511.388
19) L4 AR-1242-4	4.728	4.097	59038444	66200849	557.836	506.849
20) L4 AR-1242-5	5.452	4.595	62981298	85370072	551.374	514.265
21) L5 AR-1248-1	4.557	3.833	77724631	89358132	736.679	698.097
22) L5 AR-1248-2	4.825	4.059	45018407	58872501	307.031	307.177
23) L5 AR-1248-3	5.018	4.097	59201296	66200849	338.730	359.654
24) L5 AR-1248-4	5.417	4.255	60656062	75236362	309.235	333.470
25) L5 AR-1248-5	5.452	4.633	62981298	72299034	316.833	337.882
26) L6 AR-1254-1	5.388	4.595	46525847	85370072	224.517	254.579
27) L6 AR-1254-2	5.605	4.742	55405732	21016622	171.743	72.802 #
28) L6 AR-1254-3	5.967	5.124	24834490	29948308	73.167	64.421
29) L6 AR-1254-4	6.257	5.351	20614413	22109438	87.561	79.365
30) L6 AR-1254-5	6.677	5.757	6853420	8808796	25.866	21.020
31) L7 AR-1260-1	6.134	5.258	6258957	13195366	24.273	39.863 #
32) L7 AR-1260-2	6.399	5.445	3767943	2947041	12.395	7.539 #
33) L7 AR-1260-3	6.735	5.582	1429761	4680746	6.461	12.355 #
34) L7 AR-1260-4	6.956	6.047	4279757	710084	17.667	2.260 #
35) L7 AR-1260-5	7.297	6.294	1026492	719230	2.098	1.090 #
36) L8 AR-1262-1	6.735	5.820	1429761	1434099	4.325	3.317
37) L8 AR-1262-2	7.297	6.294	1026492	719230	1.916	0.987 #
38) L8 AR-1262-3	7.572	6.553	288985	2133893	0.822	6.851 #
39) L8 AR-1262-4	7.654	6.629	65053	947541	0.241	1.661 #
40) L8 AR-1262-5	8.171	7.135	124772	738628	0.745	2.848 #
41) L9 AR-1268-1	7.572	6.553	288985	2133893	0.481	2.433 #

Data Path : Z:\pestpcbsrv\HPCHEM1\ECD_Q\Data\PQ060624\
 Data File : PQ066978.D
 Signal(s) : Signal #1: ECD1A.ch Signal #2: ECD2B.ch
 Acq On : 06 Jun 2024 15:43
 Operator : YP\AJ
 Sample : AR1242CCC500
 Misc :
 ALS Vial : 4 Sample Multiplier: 1

Instrument :
 ECD_Q
 ClientSampleId :
 AR1242CCC500

Integration File signal 1: autoint1.e
 Integration File signal 2: autoint2.e
 Quant Time: Jun 06 16:03:22 2024
 Quant Method : Z:\pestpcbsrv\HPCHEM1\ECD_Q\Method\PQ053124.M
 Quant Title : GC EXTRACTABLES
 QLast Update : Mon Jun 03 10:00:54 2024
 Response via : Initial Calibration
 Integrator: ChemStation

Volume Inj. : 2 µl
 Signal #1 Phase : ZB-MR1 Signal #2 Phase: ZB-MR2
 Signal #1 Info : 30Mx0.32mmx 0.50µ Signal #2 Info : 30M x 0.32mm x 0.25µm

	Compound	RT#1	RT#2	Resp#1	Resp#2	ng/ml	ng/ml
42)	L9 AR-1268-2	7.654	6.629	65053	947541	0.120	1.184 #
43)	L9 AR-1268-3	7.837	6.839	532529	1296765	1.143	1.870 #
44)	L9 AR-1268-4	8.171	7.135	124772	738628	0.708	2.604 #
45)	L9 AR-1268-5	8.466	7.395	1443201	3229438	1.080	1.579 #

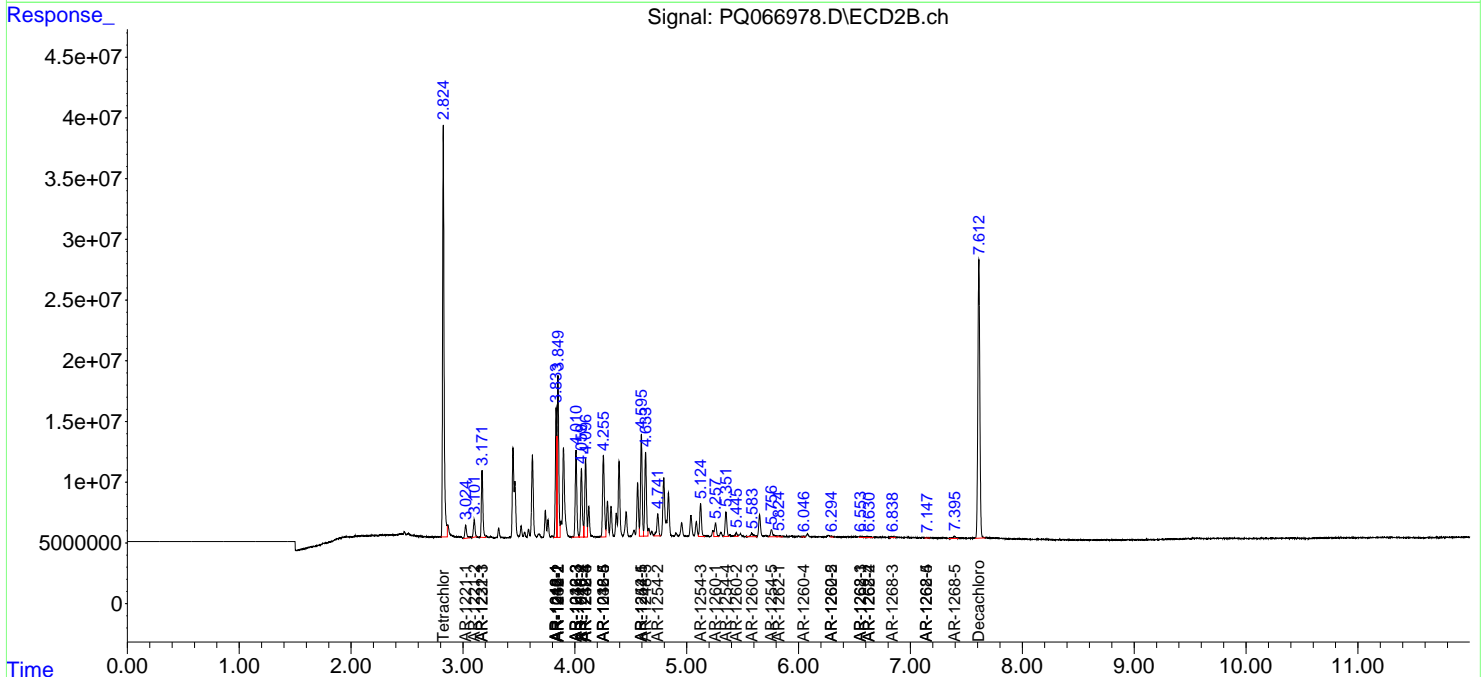
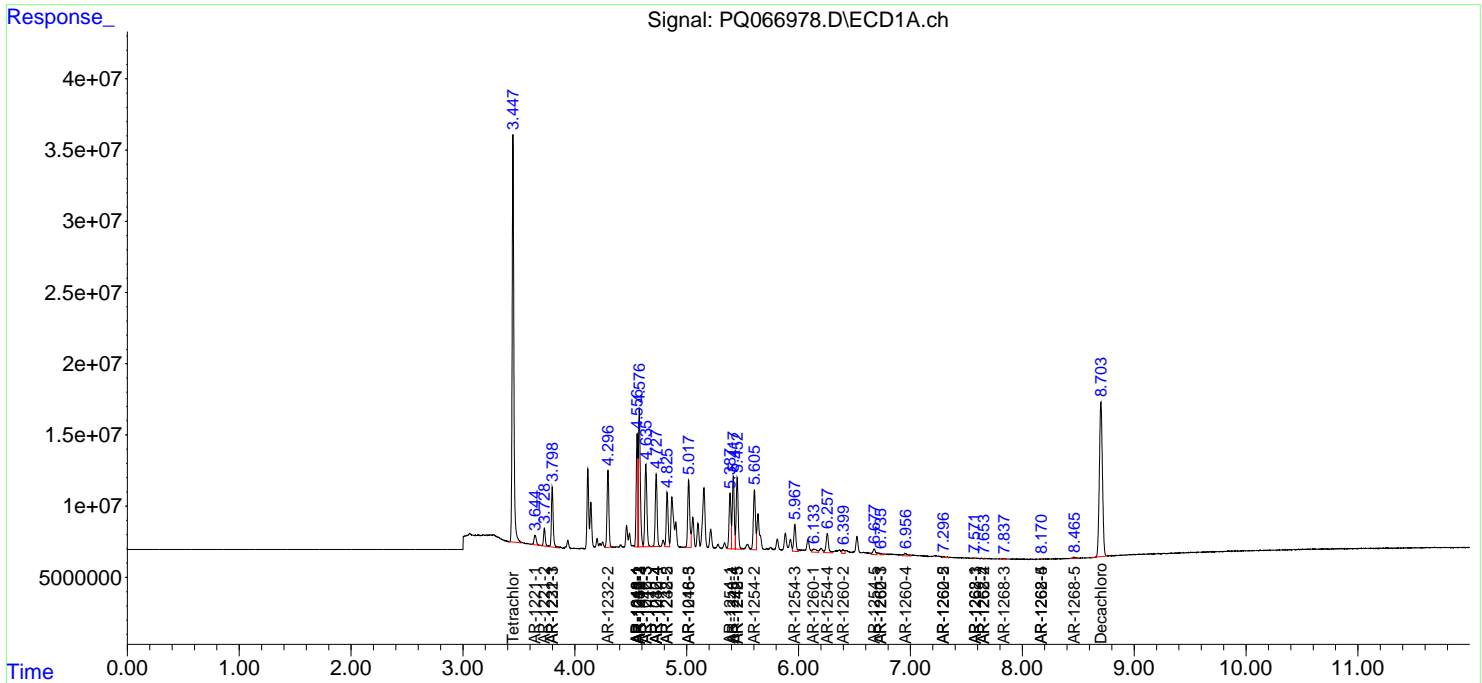
(f)=RT Delta > 1/2 Window (#)=Amounts differ by > 25% (m)=manual int.

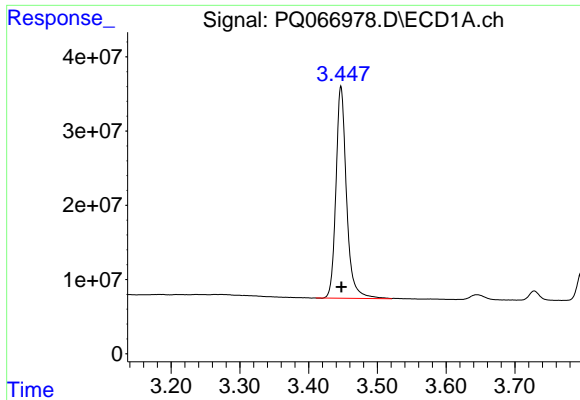
Data Path : Z:\pestpcbsrv\HPCHEM1\ECD_Q\Data\PQ060624\
 Data File : PQ066978.D
 Signal(s) : Signal #1: ECD1A.ch Signal #2: ECD2B.ch
 Acq On : 06 Jun 2024 15:43
 Operator : YP\AJ
 Sample : AR1242CCC500
 Misc :
 ALS Vial : 4 Sample Multiplier: 1

Instrument :
 ECD_Q
 ClientSampleId :
 AR1242CCC500

Integration File signal 1: autoint1.e
 Integration File signal 2: autoint2.e
 Quant Time: Jun 06 16:03:22 2024
 Quant Method : Z:\pestpcbsrv\HPCHEM1\ECD_Q\Method\PQ053124.M
 Quant Title : GC EXTRACTABLES
 QLast Update : Mon Jun 03 10:00:54 2024
 Response via : Initial Calibration
 Integrator: ChemStation

Volume Inj. : 2 µl
 Signal #1 Phase : ZB-MR1 Signal #2 Phase: ZB-MR2
 Signal #1 Info : 30Mx0.32mmx 0.50µ Signal #2 Info : 30M x 0.32mm x 0.25µm

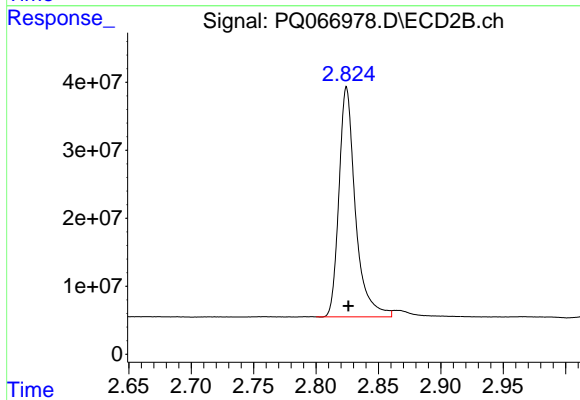




#1 Tetrachloro-m-xylene

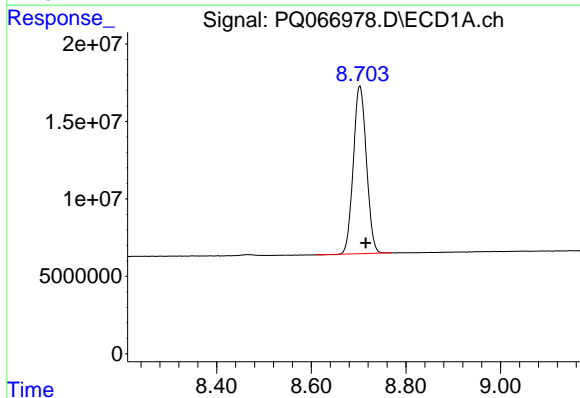
R.T.: 3.447 min
 Delta R.T.: 0.000 min
 Response: 305310805
 Conc: 55.12 ng/ml

Instrument :
 ECD_Q
 ClientSampleId :
 AR1242CCC500



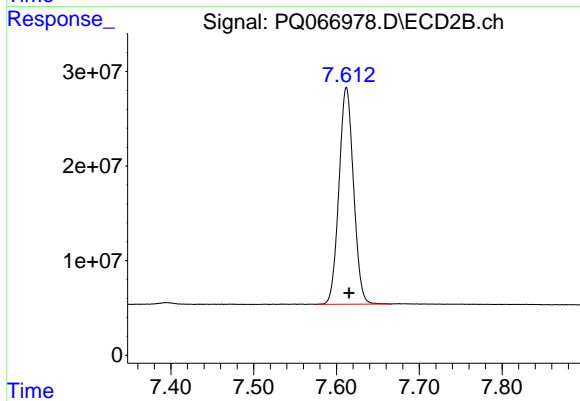
#1 Tetrachloro-m-xylene

R.T.: 2.824 min
 Delta R.T.: -0.002 min
 Response: 310362708
 Conc: 53.05 ng/ml



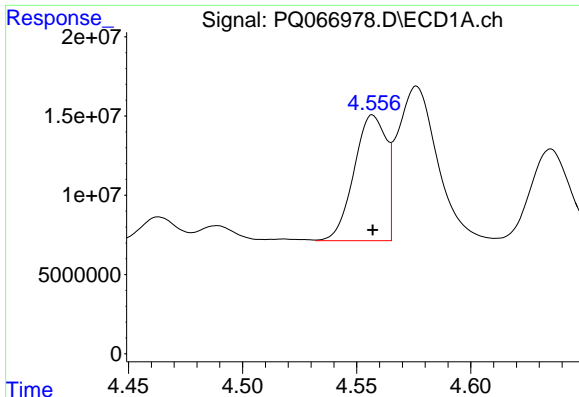
#2 Decachlorobiphenyl

R.T.: 8.702 min
 Delta R.T.: -0.013 min
 Response: 208243550
 Conc: 54.91 ng/ml



#2 Decachlorobiphenyl

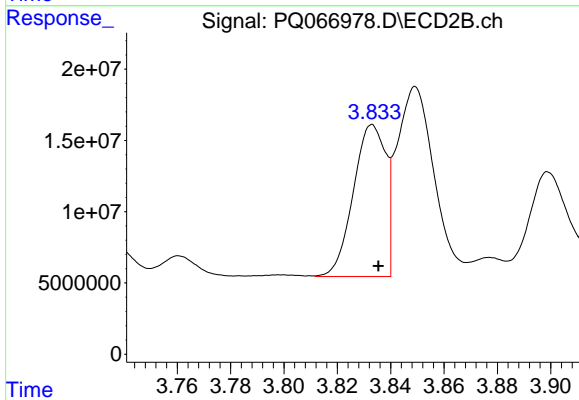
R.T.: 7.612 min
 Delta R.T.: -0.003 min
 Response: 280081183
 Conc: 48.77 ng/ml



#3 AR-1016-1

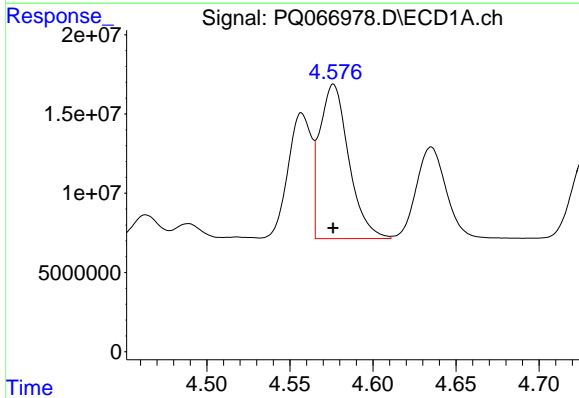
R.T.: 4.557 min
 Delta R.T.: 0.000 min
 Response: 77724631
 Conc: 459.16 ng/ml

Instrument :
 ECD_Q
 ClientSampleId :
 AR1242CCC500



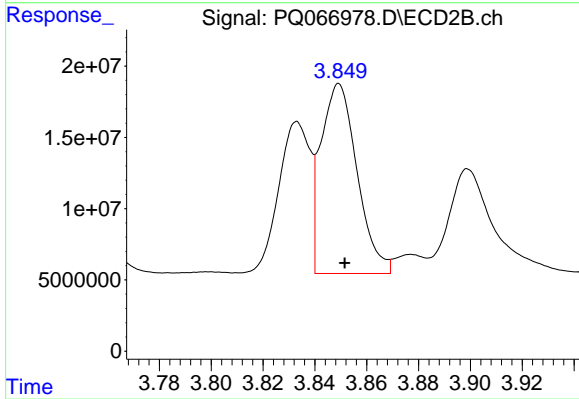
#3 AR-1016-1

R.T.: 3.833 min
 Delta R.T.: -0.002 min
 Response: 89358132
 Conc: 437.09 ng/ml



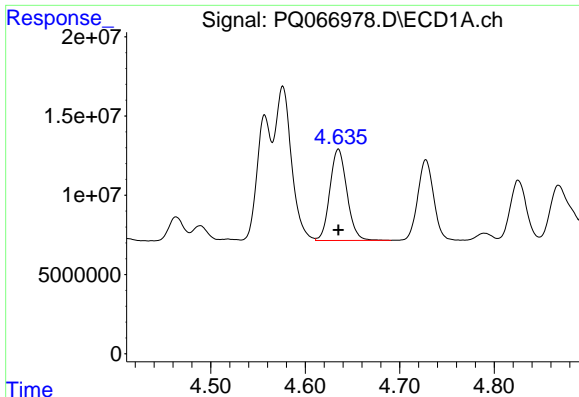
#4 AR-1016-2

R.T.: 4.576 min
 Delta R.T.: 0.000 min
 Response: 118425931
 Conc: 450.01 ng/ml



#4 AR-1016-2

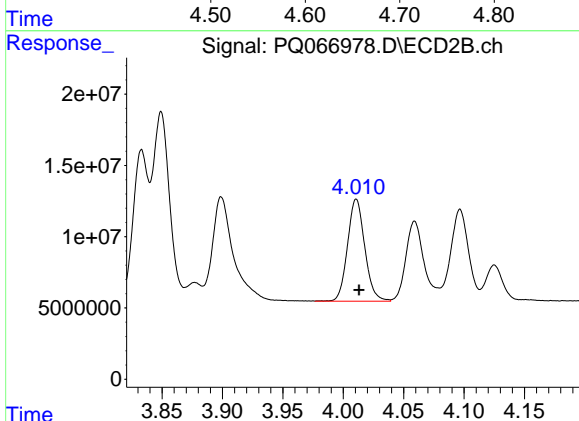
R.T.: 3.849 min
 Delta R.T.: -0.002 min
 Response: 129097601
 Conc: 435.07 ng/ml



#5 AR-1016-3

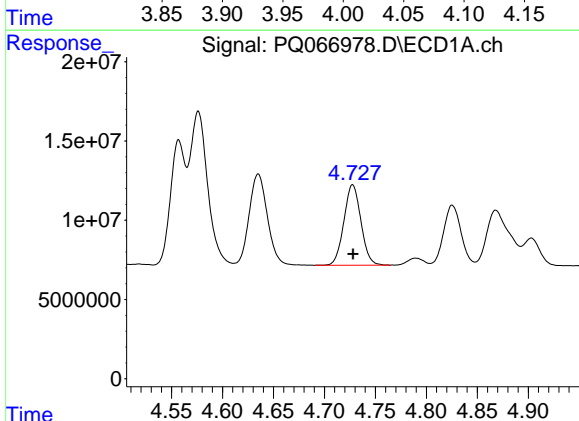
R.T.: 4.635 min
 Delta R.T.: 0.000 min
 Response: 72179582
 Conc: 449.74 ng/ml

Instrument :
 ECD_Q
 ClientSampleId :
 AR1242CCC500



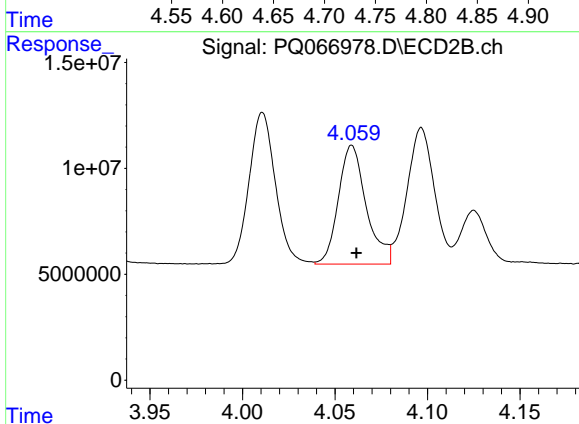
#5 AR-1016-3

R.T.: 4.011 min
 Delta R.T.: -0.002 min
 Response: 71366079
 Conc: 434.77 ng/ml



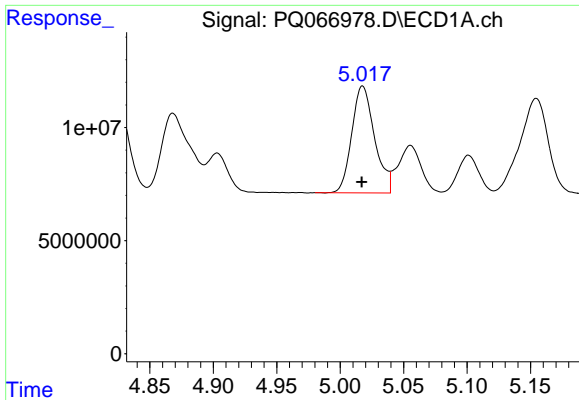
#6 AR-1016-4

R.T.: 4.728 min
 Delta R.T.: 0.000 min
 Response: 59038444
 Conc: 460.69 ng/ml



#6 AR-1016-4

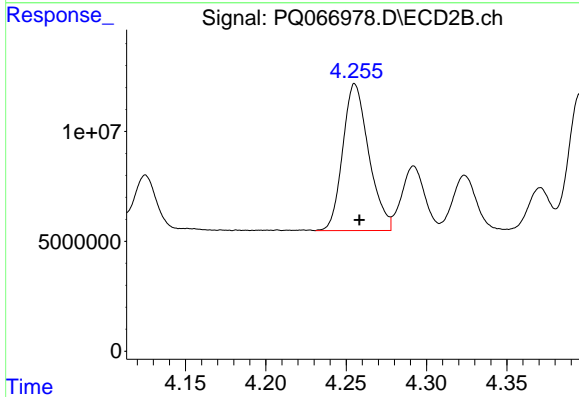
R.T.: 4.059 min
 Delta R.T.: -0.002 min
 Response: 58872501
 Conc: 427.42 ng/ml



#7 AR-1016-5

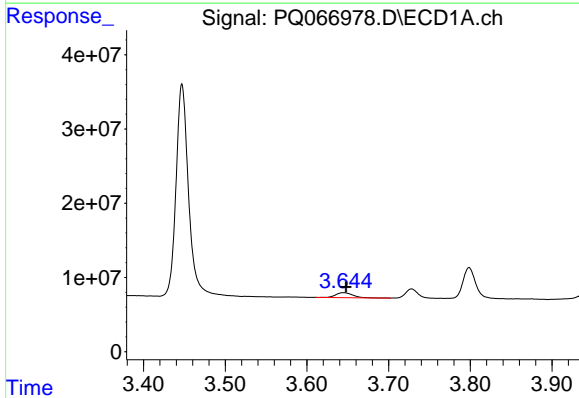
R.T.: 5.018 min
 Delta R.T.: 0.000 min
 Response: 59201296
 Conc: 459.67 ng/ml

Instrument :
 ECD_Q
 ClientSampleId :
 AR1242CCC500



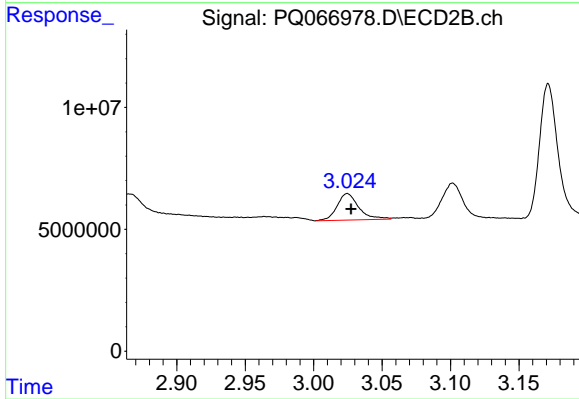
#7 AR-1016-5

R.T.: 4.255 min
 Delta R.T.: -0.003 min
 Response: 75236362
 Conc: 438.46 ng/ml



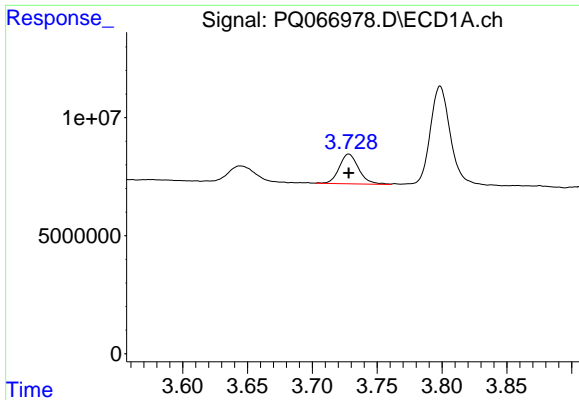
#8 AR-1221-1

R.T.: 3.645 min
 Delta R.T.: -0.003 min
 Response: 9660413
 Conc: 146.96 ng/ml



#8 AR-1221-1

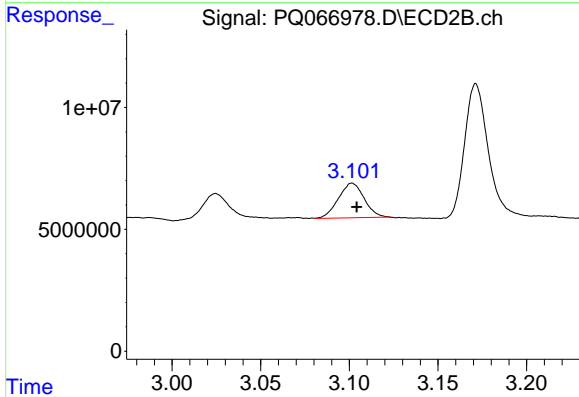
R.T.: 3.025 min
 Delta R.T.: -0.003 min
 Response: 12012549
 Conc: 149.98 ng/ml



#9 AR-1221-2

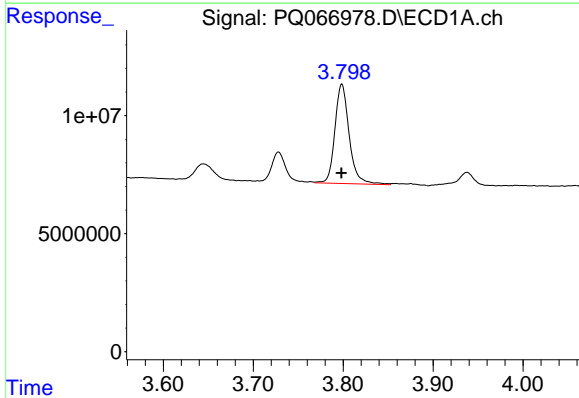
R.T.: 3.728 min
 Delta R.T.: 0.000 min
 Response: 13230304
 Conc: 273.17 ng/ml

Instrument :
 ECD_Q
 ClientSampleId :
 AR1242CCC500



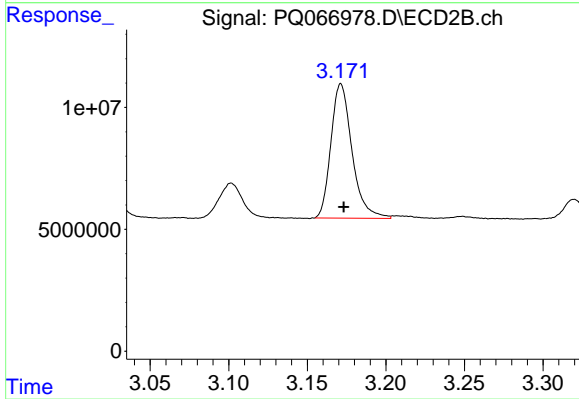
#9 AR-1221-2

R.T.: 3.102 min
 Delta R.T.: -0.003 min
 Response: 14340141
 Conc: 274.41 ng/ml



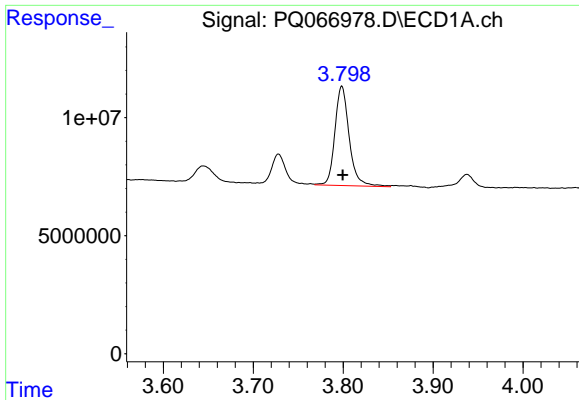
#10 AR-1221-3

R.T.: 3.799 min
 Delta R.T.: 0.000 min
 Response: 46556691
 Conc: 306.60 ng/ml



#10 AR-1221-3

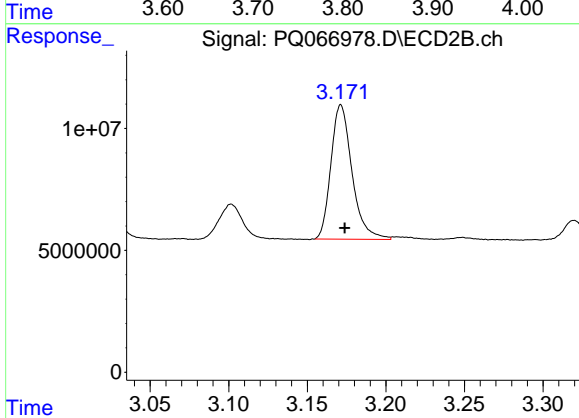
R.T.: 3.171 min
 Delta R.T.: -0.002 min
 Response: 51531006
 Conc: 295.01 ng/ml



#11 AR-1232-1

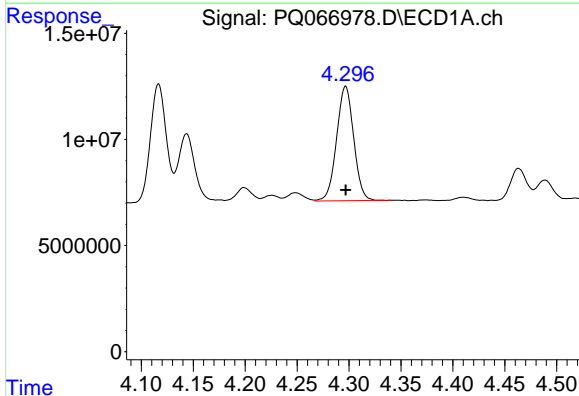
R.T.: 3.799 min
 Delta R.T.: 0.000 min
 Response: 46556691
 Conc: 377.14 ng/ml

Instrument :
 ECD_Q
 ClientSampleId :
 AR1242CCC500



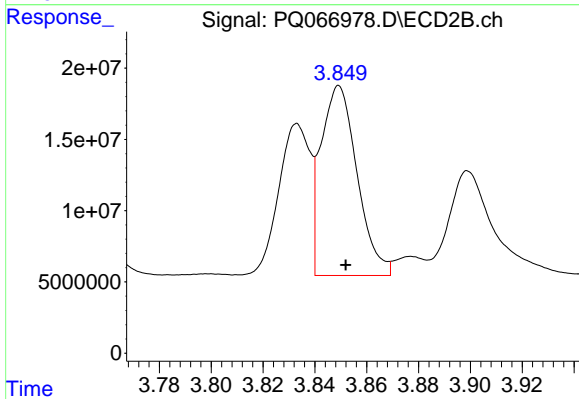
#11 AR-1232-1

R.T.: 3.171 min
 Delta R.T.: -0.002 min
 Response: 51531006
 Conc: 357.24 ng/ml



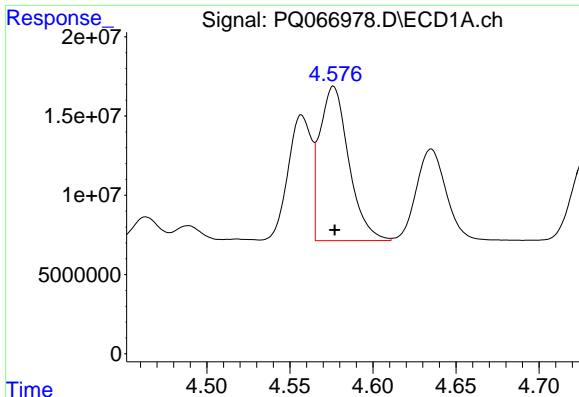
#12 AR-1232-2

R.T.: 4.297 min
 Delta R.T.: 0.000 min
 Response: 61779830
 Conc: 936.91 ng/ml



#12 AR-1232-2

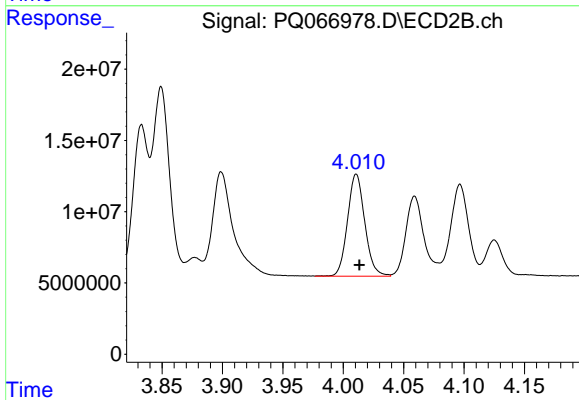
R.T.: 3.849 min
 Delta R.T.: -0.003 min
 Response: 129097601
 Conc: 908.62 ng/ml



#13 AR-1232-3

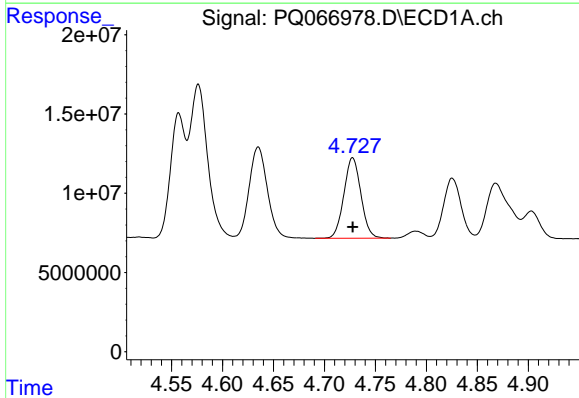
R.T.: 4.576 min
 Delta R.T.: 0.000 min
 Response: 118425931
 Conc: 982.81 ng/ml

Instrument :
 ECD_Q
 ClientSampleId :
 AR1242CCC500



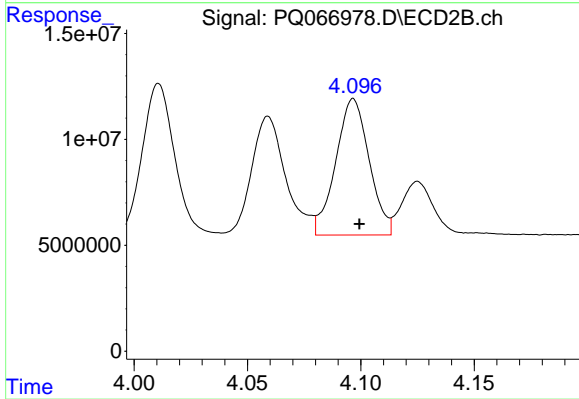
#13 AR-1232-3

R.T.: 4.011 min
 Delta R.T.: -0.003 min
 Response: 71366079
 Conc: 916.74 ng/ml



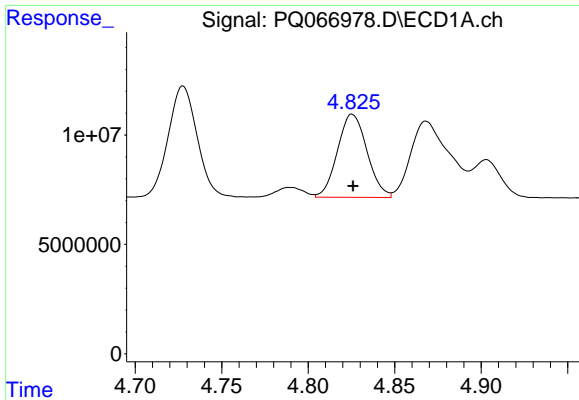
#14 AR-1232-4

R.T.: 4.728 min
 Delta R.T.: 0.000 min
 Response: 59038444
 Conc: 1027.12 ng/ml



#14 AR-1232-4

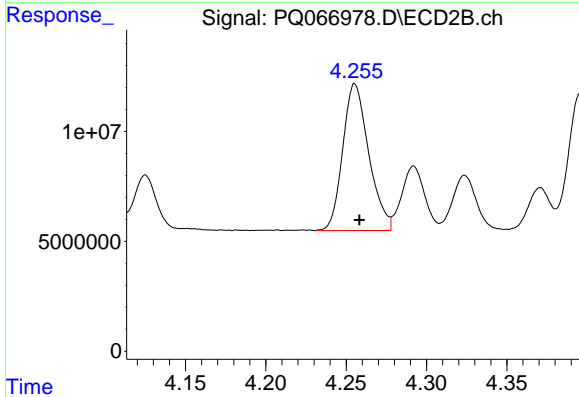
R.T.: 4.097 min
 Delta R.T.: -0.003 min
 Response: 66200849
 Conc: 995.52 ng/ml



#15 AR-1232-5

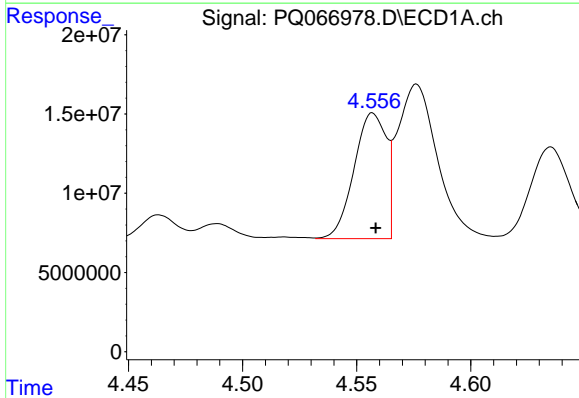
R.T.: 4.825 min
 Delta R.T.: 0.000 min
 Response: 45018407
 Conc: 1125.28 ng/ml

Instrument :
 ECD_Q
 ClientSampleId :
 AR1242CCC500



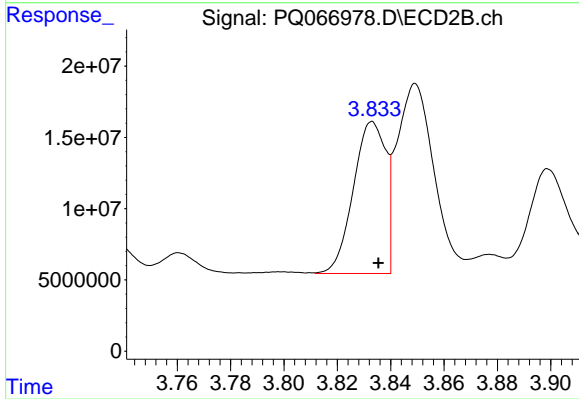
#15 AR-1232-5

R.T.: 4.255 min
 Delta R.T.: -0.003 min
 Response: 75236362
 Conc: 1003.44 ng/ml



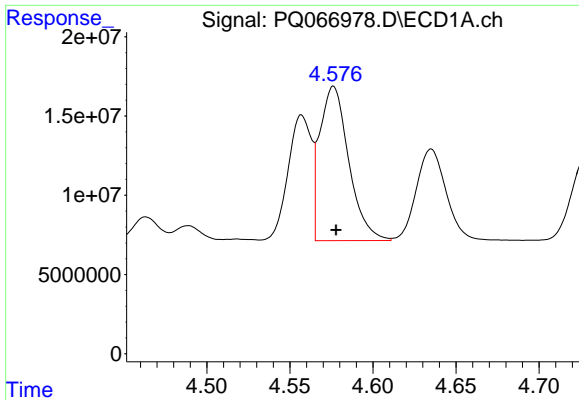
#16 AR-1242-1

R.T.: 4.557 min
 Delta R.T.: -0.001 min
 Response: 77724631
 Conc: 545.08 ng/ml



#16 AR-1242-1

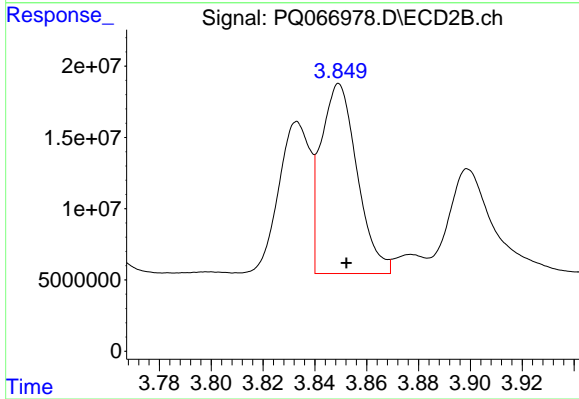
R.T.: 3.833 min
 Delta R.T.: -0.002 min
 Response: 89358132
 Conc: 513.72 ng/ml



#17 AR-1242-2

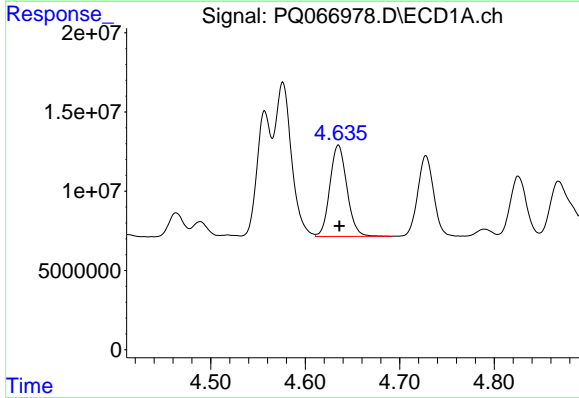
R.T.: 4.576 min
 Delta R.T.: -0.002 min
 Response: 118425931
 Conc: 538.18 ng/ml

Instrument :
 ECD_Q
 ClientSampleId :
 AR1242CCC500



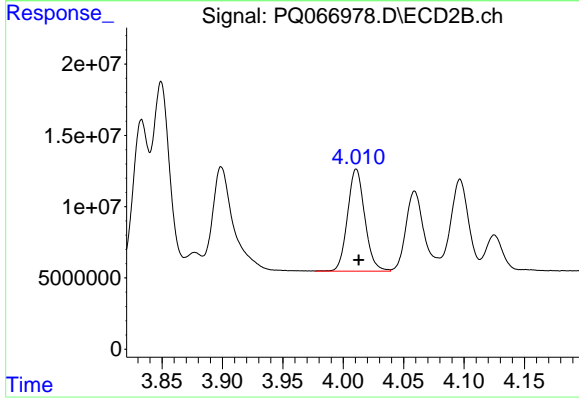
#17 AR-1242-2

R.T.: 3.849 min
 Delta R.T.: -0.003 min
 Response: 129097601
 Conc: 518.00 ng/ml



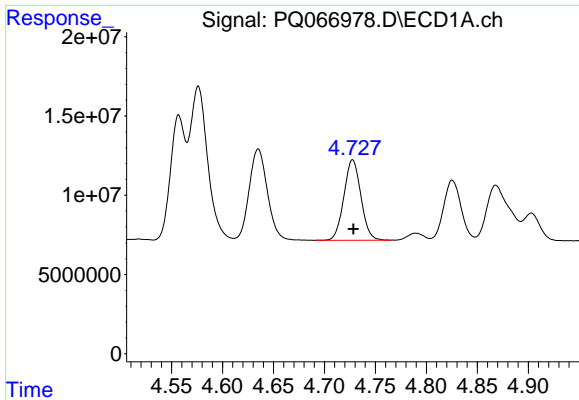
#18 AR-1242-3

R.T.: 4.635 min
 Delta R.T.: 0.000 min
 Response: 72179582
 Conc: 536.23 ng/ml



#18 AR-1242-3

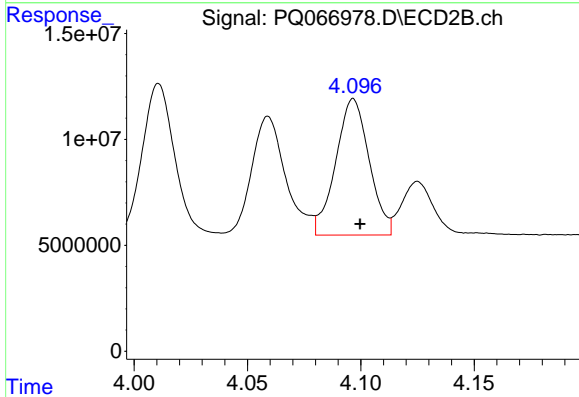
R.T.: 4.011 min
 Delta R.T.: -0.002 min
 Response: 71366079
 Conc: 511.39 ng/ml



#19 AR-1242-4

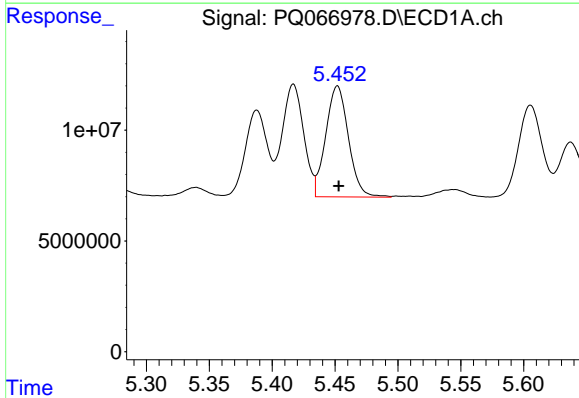
R.T.: 4.728 min
 Delta R.T.: 0.000 min
 Response: 59038444
 Conc: 557.84 ng/ml

Instrument :
 ECD_Q
 ClientSampleId :
 AR1242CCC500



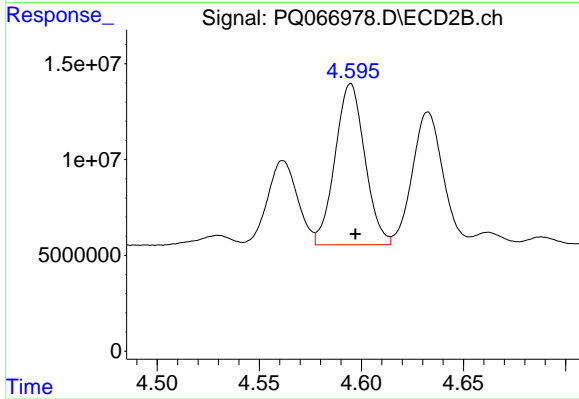
#19 AR-1242-4

R.T.: 4.097 min
 Delta R.T.: -0.003 min
 Response: 66200849
 Conc: 506.85 ng/ml



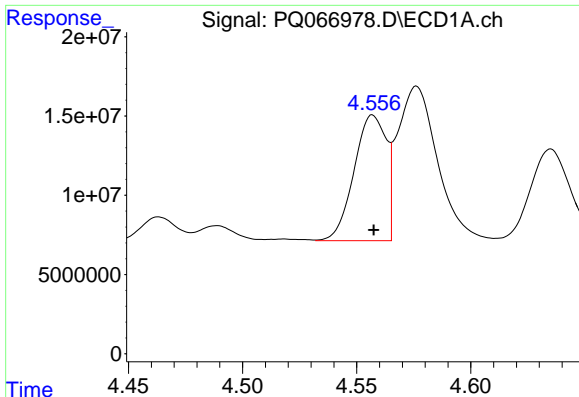
#20 AR-1242-5

R.T.: 5.452 min
 Delta R.T.: -0.001 min
 Response: 62981298
 Conc: 551.37 ng/ml



#20 AR-1242-5

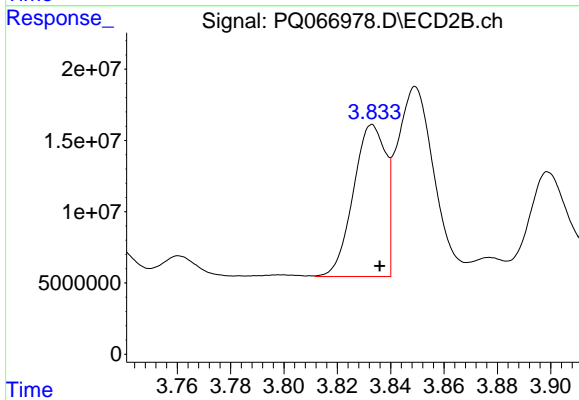
R.T.: 4.595 min
 Delta R.T.: -0.002 min
 Response: 85370072
 Conc: 514.26 ng/ml



#21 AR-1248-1

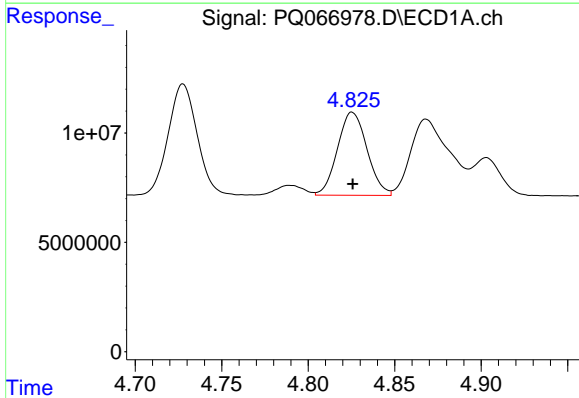
R.T.: 4.557 min
 Delta R.T.: 0.000 min
 Response: 77724631
 Conc: 736.68 ng/ml

Instrument :
 ECD_Q
 ClientSampleId :
 AR1242CCC500



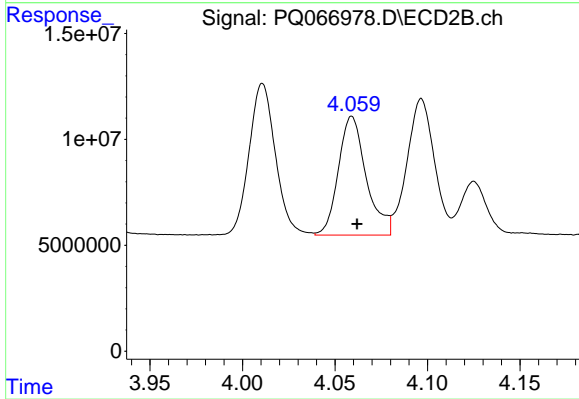
#21 AR-1248-1

R.T.: 3.833 min
 Delta R.T.: -0.003 min
 Response: 89358132
 Conc: 698.10 ng/ml



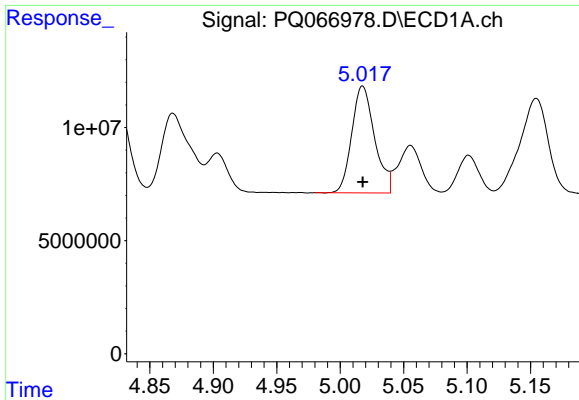
#22 AR-1248-2

R.T.: 4.825 min
 Delta R.T.: 0.000 min
 Response: 45018407
 Conc: 307.03 ng/ml



#22 AR-1248-2

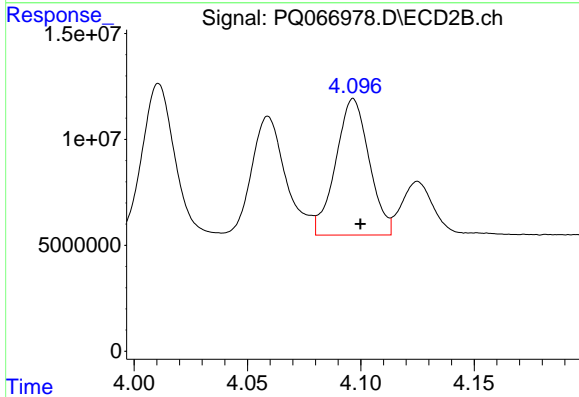
R.T.: 4.059 min
 Delta R.T.: -0.003 min
 Response: 58872501
 Conc: 307.18 ng/ml



#23 AR-1248-3

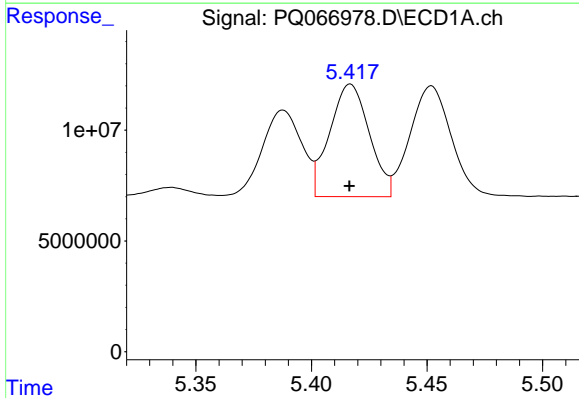
R.T.: 5.018 min
 Delta R.T.: 0.000 min
 Response: 59201296
 Conc: 338.73 ng/ml

Instrument :
 ECD_Q
 ClientSampleId :
 AR1242CCC500



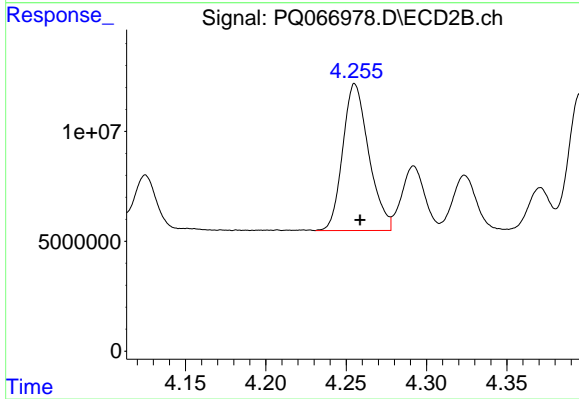
#23 AR-1248-3

R.T.: 4.097 min
 Delta R.T.: -0.003 min
 Response: 66200849
 Conc: 359.65 ng/ml



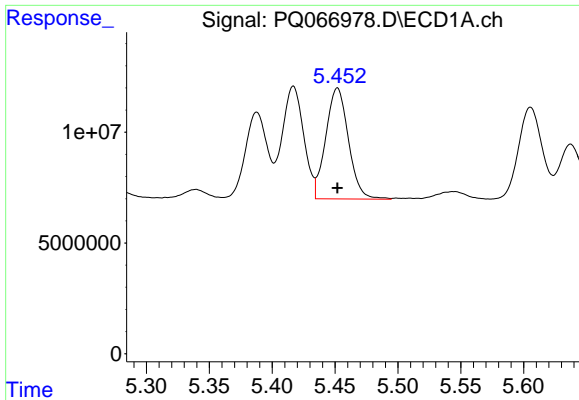
#24 AR-1248-4

R.T.: 5.417 min
 Delta R.T.: 0.000 min
 Response: 60656062
 Conc: 309.23 ng/ml



#24 AR-1248-4

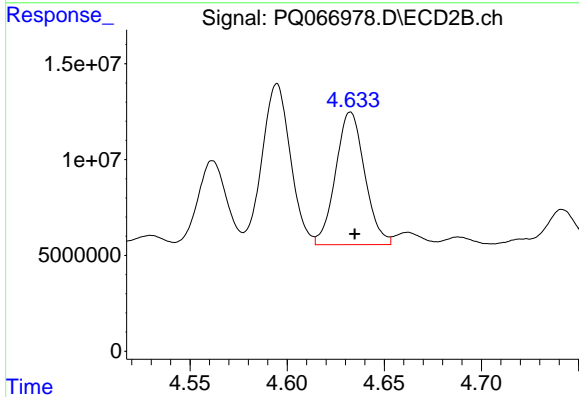
R.T.: 4.255 min
 Delta R.T.: -0.003 min
 Response: 75236362
 Conc: 333.47 ng/ml



#25 AR-1248-5

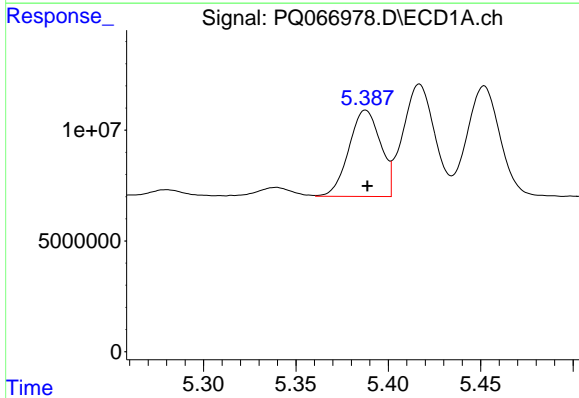
R.T.: 5.452 min
Delta R.T.: 0.000 min
Response: 62981298
Conc: 316.83 ng/ml

Instrument :
ECD_Q
ClientSampleId :
AR1242CCC500



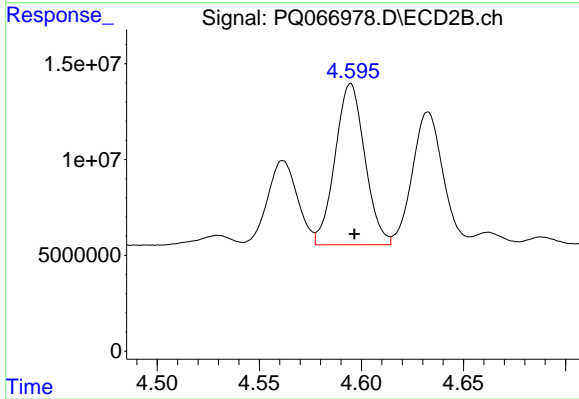
#25 AR-1248-5

R.T.: 4.633 min
Delta R.T.: -0.002 min
Response: 72299034
Conc: 337.88 ng/ml



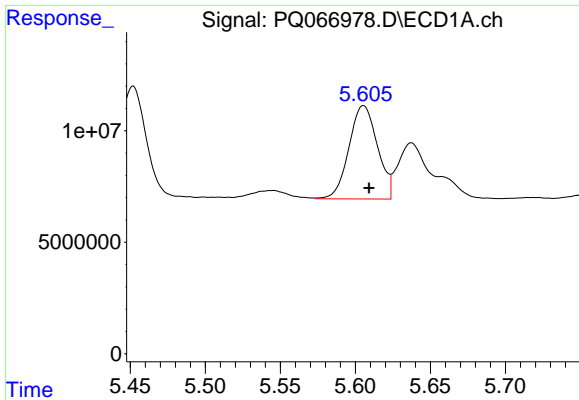
#26 AR-1254-1

R.T.: 5.388 min
Delta R.T.: 0.000 min
Response: 46525847
Conc: 224.52 ng/ml



#26 AR-1254-1

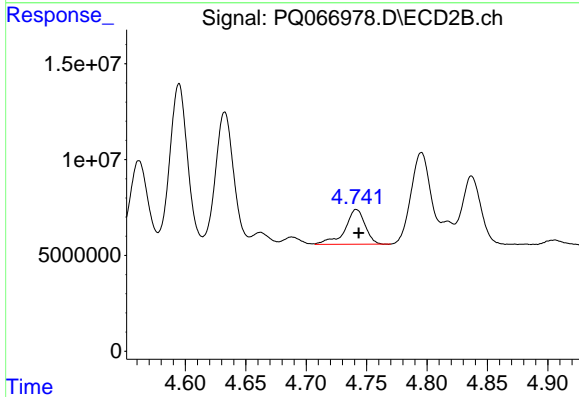
R.T.: 4.595 min
Delta R.T.: -0.002 min
Response: 85370072
Conc: 254.58 ng/ml



#27 AR-1254-2

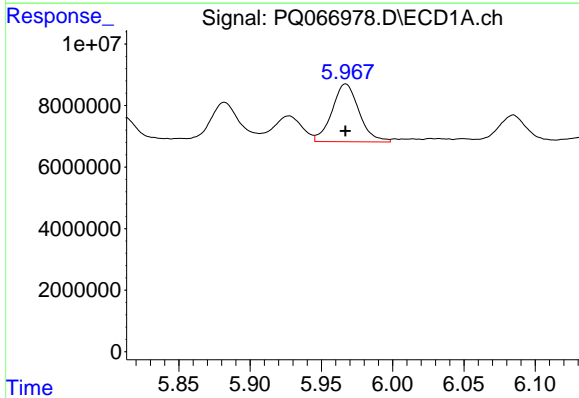
R.T.: 5.605 min
 Delta R.T.: -0.004 min
 Response: 55405732
 Conc: 171.74 ng/ml

Instrument :
 ECD_Q
 ClientSampleId :
 AR1242CCC500



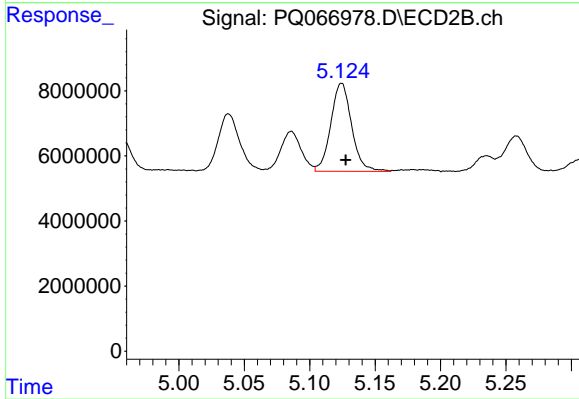
#27 AR-1254-2

R.T.: 4.742 min
 Delta R.T.: -0.002 min
 Response: 21016622
 Conc: 72.80 ng/ml



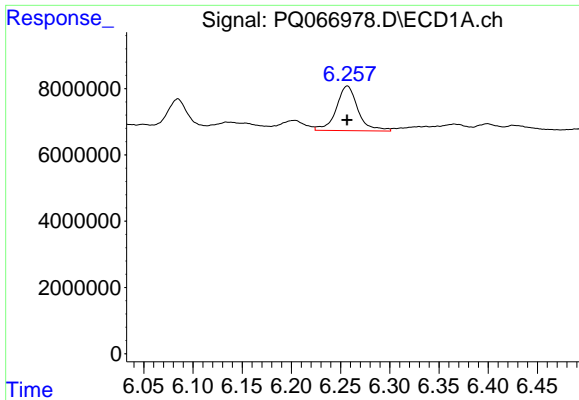
#28 AR-1254-3

R.T.: 5.967 min
 Delta R.T.: 0.000 min
 Response: 24834490
 Conc: 73.17 ng/ml



#28 AR-1254-3

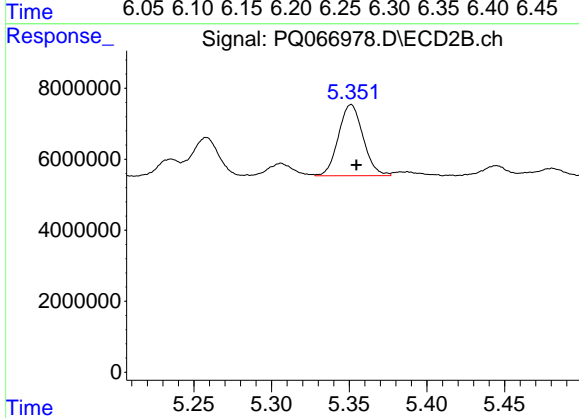
R.T.: 5.124 min
 Delta R.T.: -0.003 min
 Response: 29948308
 Conc: 64.42 ng/ml



#29 AR-1254-4

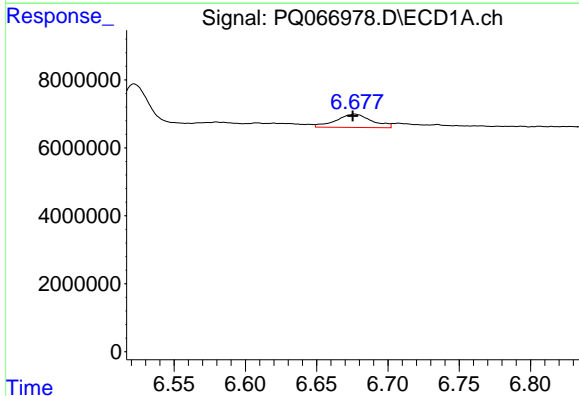
R.T.: 6.257 min
 Delta R.T.: 0.000 min
 Response: 20614413
 Conc: 87.56 ng/ml

Instrument :
 ECD_Q
 ClientSampleId :
 AR1242CCC500



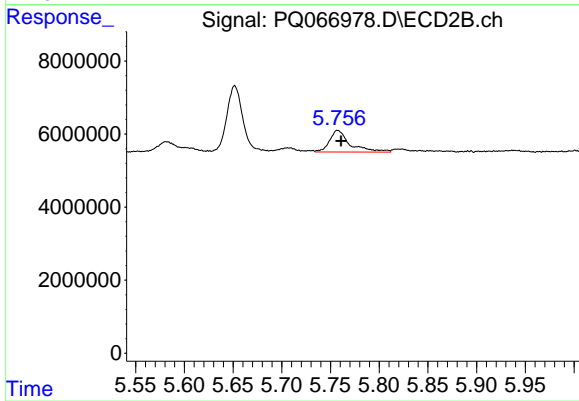
#29 AR-1254-4

R.T.: 5.351 min
 Delta R.T.: -0.003 min
 Response: 22109438
 Conc: 79.36 ng/ml



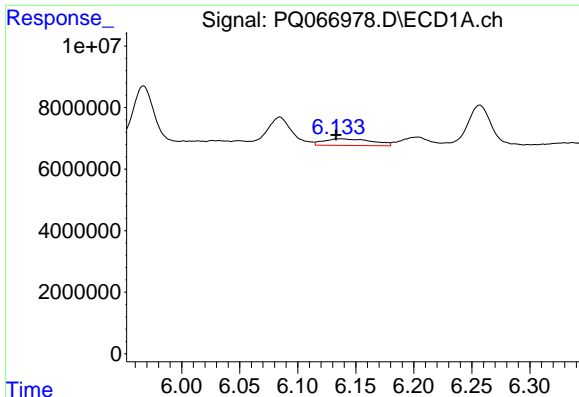
#30 AR-1254-5

R.T.: 6.677 min
 Delta R.T.: 0.001 min
 Response: 6853420
 Conc: 25.87 ng/ml



#30 AR-1254-5

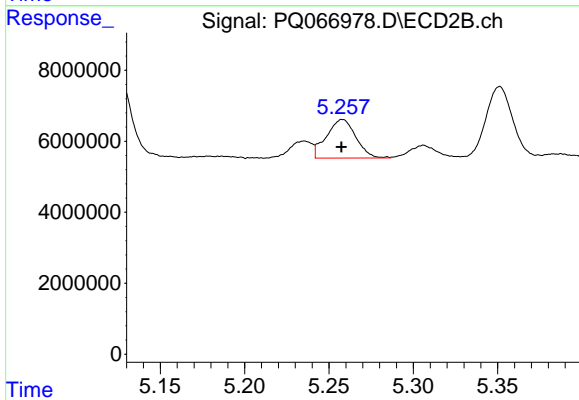
R.T.: 5.757 min
 Delta R.T.: -0.004 min
 Response: 8808796
 Conc: 21.02 ng/ml



#31 AR-1260-1

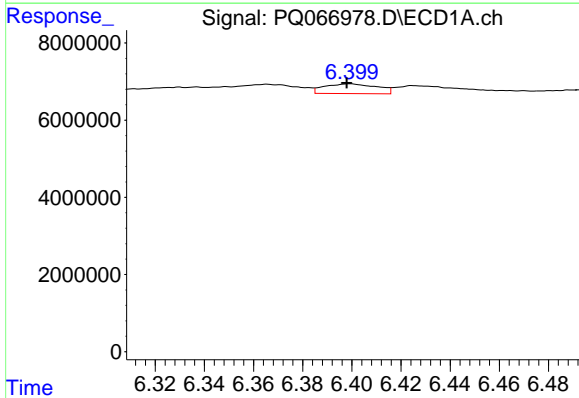
R.T.: 6.134 min
 Delta R.T.: 0.001 min
 Response: 6258957
 Conc: 24.27 ng/ml

Instrument :
 ECD_Q
 ClientSampleId :
 AR1242CCC500



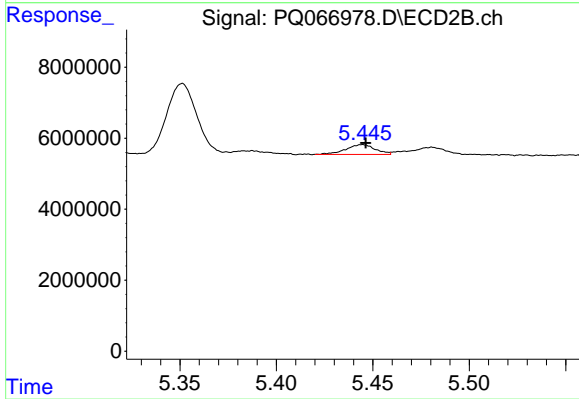
#31 AR-1260-1

R.T.: 5.258 min
 Delta R.T.: 0.000 min
 Response: 13195366
 Conc: 39.86 ng/ml



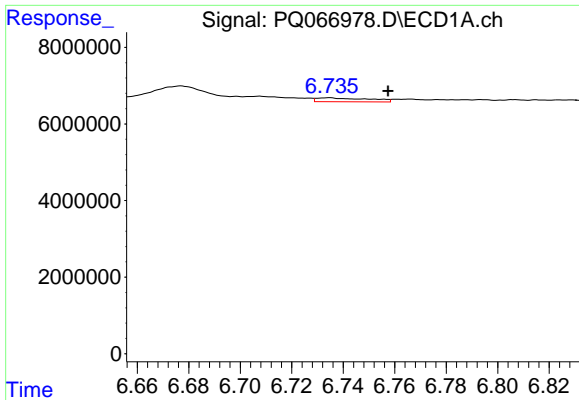
#32 AR-1260-2

R.T.: 6.399 min
 Delta R.T.: 0.001 min
 Response: 3767943
 Conc: 12.40 ng/ml



#32 AR-1260-2

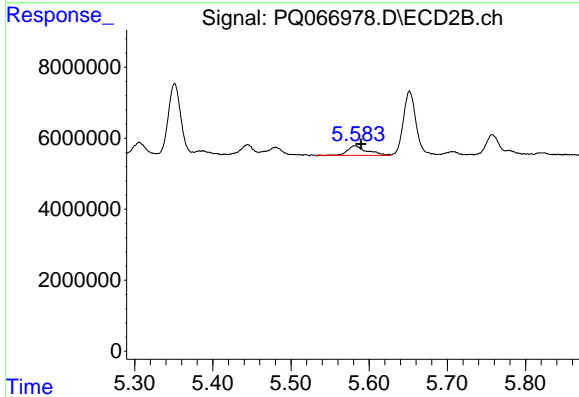
R.T.: 5.445 min
 Delta R.T.: -0.002 min
 Response: 2947041
 Conc: 7.54 ng/ml



#33 AR-1260-3

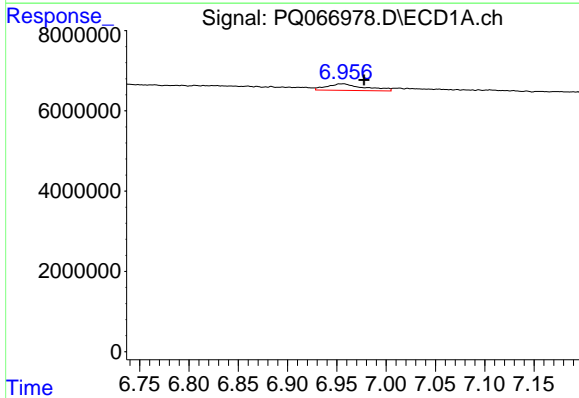
R.T.: 6.735 min
 Delta R.T.: -0.023 min
 Response: 1429761
 Conc: 6.46 ng/ml

Instrument :
 ECD_Q
 ClientSampleId :
 AR1242CCC500



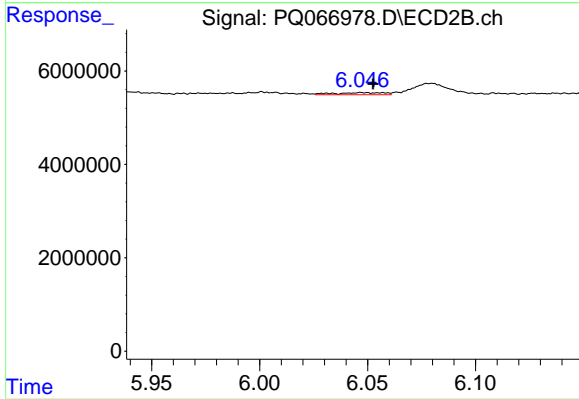
#33 AR-1260-3

R.T.: 5.582 min
 Delta R.T.: -0.008 min
 Response: 4680746
 Conc: 12.35 ng/ml



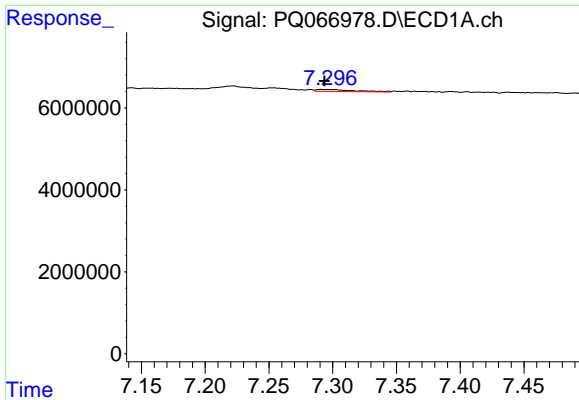
#34 AR-1260-4

R.T.: 6.956 min
 Delta R.T.: -0.021 min
 Response: 4279757
 Conc: 17.67 ng/ml



#34 AR-1260-4

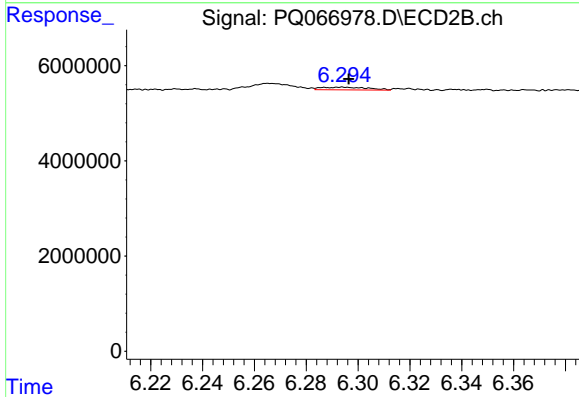
R.T.: 6.047 min
 Delta R.T.: -0.005 min
 Response: 710084
 Conc: 2.26 ng/ml



#35 AR-1260-5

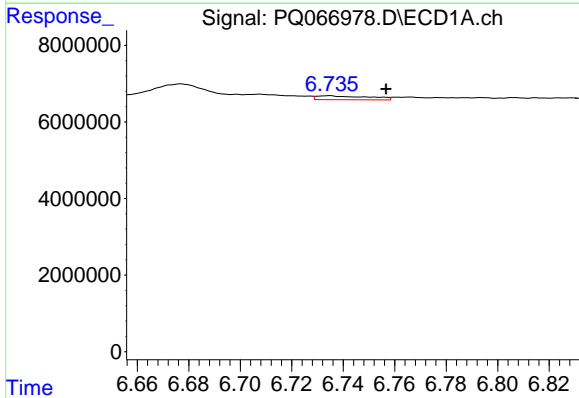
R.T.: 7.297 min
 Delta R.T.: 0.003 min
 Response: 1026492
 Conc: 2.10 ng/ml

Instrument :
 ECD_Q
 ClientSampleId :
 AR1242CCC500



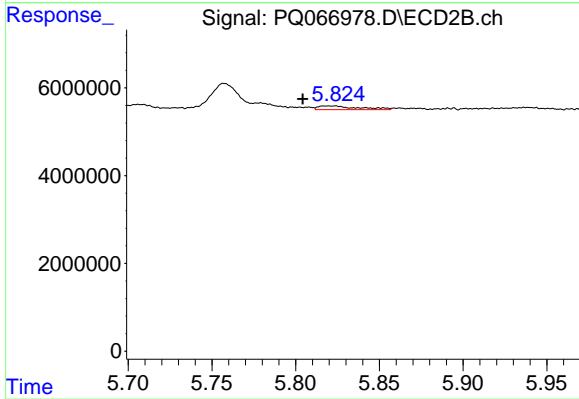
#35 AR-1260-5

R.T.: 6.294 min
 Delta R.T.: -0.002 min
 Response: 719230
 Conc: 1.09 ng/ml



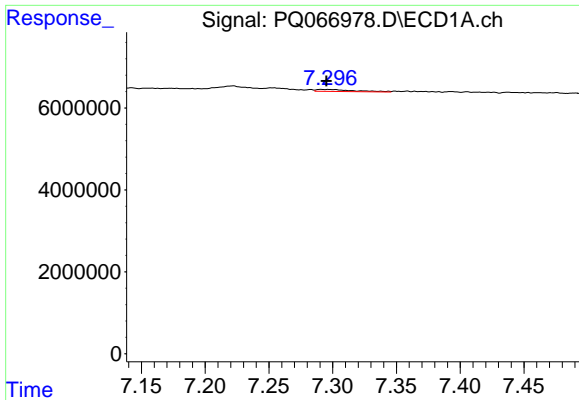
#36 AR-1262-1

R.T.: 6.735 min
 Delta R.T.: -0.022 min
 Response: 1429761
 Conc: 4.32 ng/ml



#36 AR-1262-1

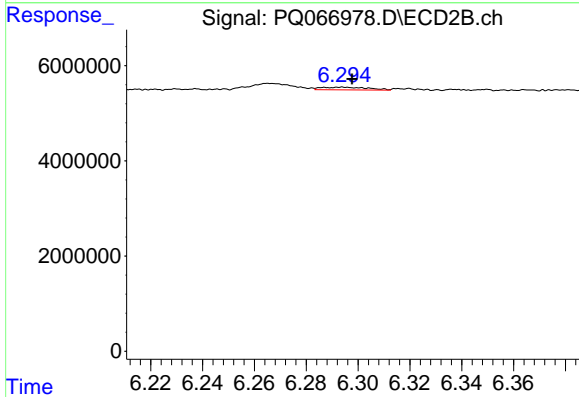
R.T.: 5.820 min
 Delta R.T.: 0.016 min
 Response: 1434099
 Conc: 3.32 ng/ml



#37 AR-1262-2

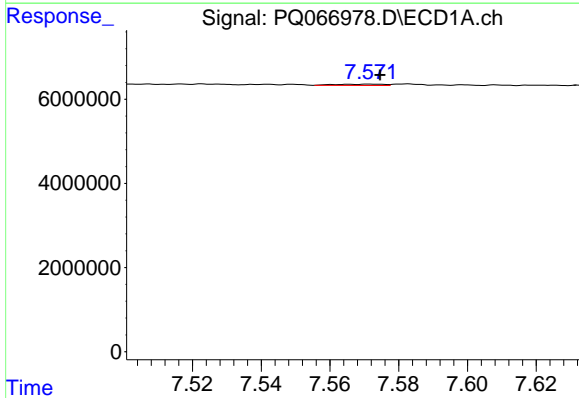
R.T.: 7.297 min
 Delta R.T.: 0.002 min
 Response: 1026492
 Conc: 1.92 ng/ml

Instrument :
 ECD_Q
 ClientSampleId :
 AR1242CCC500



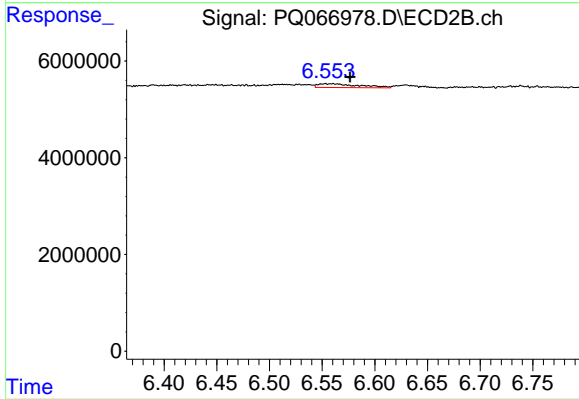
#37 AR-1262-2

R.T.: 6.294 min
 Delta R.T.: -0.004 min
 Response: 719230
 Conc: 0.99 ng/ml



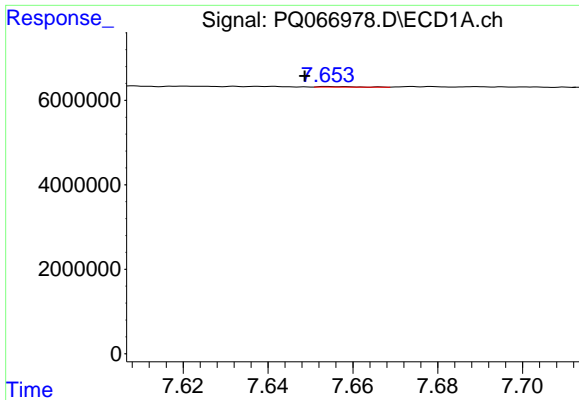
#38 AR-1262-3

R.T.: 7.572 min
 Delta R.T.: -0.003 min
 Response: 288985
 Conc: 0.82 ng/ml



#38 AR-1262-3

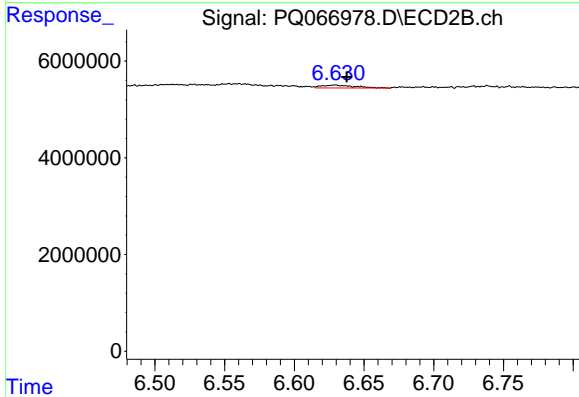
R.T.: 6.553 min
 Delta R.T.: -0.023 min
 Response: 2133893
 Conc: 6.85 ng/ml



#39 AR-1262-4

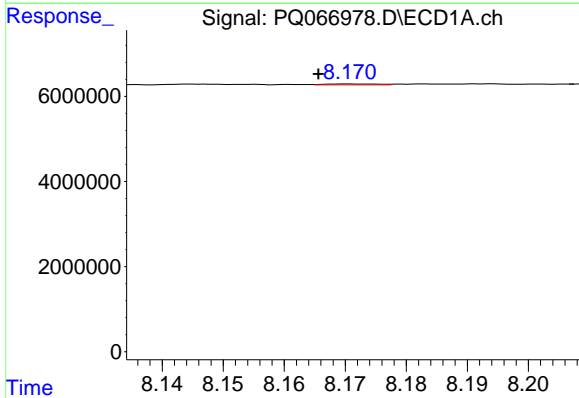
R.T.: 7.654 min
 Delta R.T.: 0.006 min
 Response: 65053
 Conc: 0.24 ng/ml

Instrument :
 ECD_Q
 ClientSampleId :
 AR1242CCC500



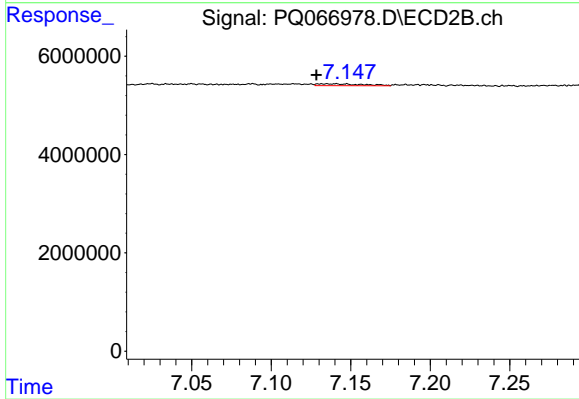
#39 AR-1262-4

R.T.: 6.629 min
 Delta R.T.: -0.008 min
 Response: 947541
 Conc: 1.66 ng/ml



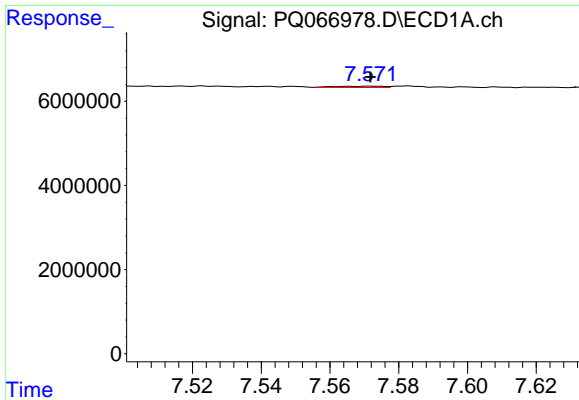
#40 AR-1262-5

R.T.: 8.171 min
 Delta R.T.: 0.005 min
 Response: 124772
 Conc: 0.75 ng/ml



#40 AR-1262-5

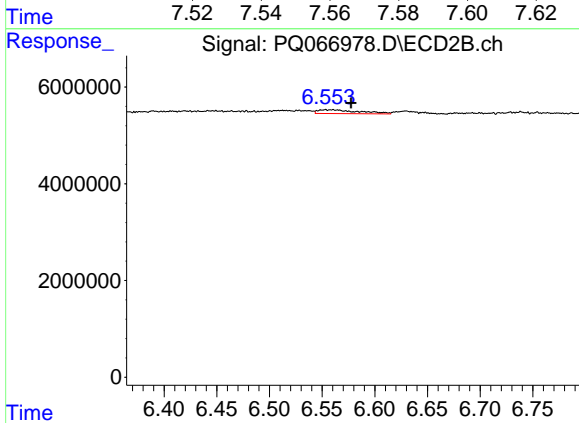
R.T.: 7.135 min
 Delta R.T.: 0.007 min
 Response: 738628
 Conc: 2.85 ng/ml



#41 AR-1268-1

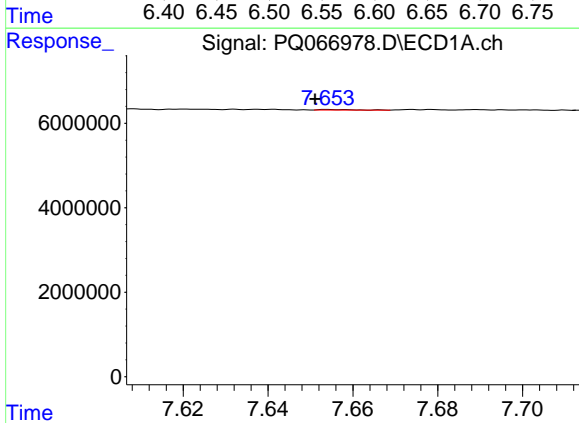
R.T.: 7.572 min
 Delta R.T.: 0.000 min
 Response: 288985
 Conc: 0.48 ng/ml

Instrument :
 ECD_Q
 ClientSampleId :
 AR1242CCC500



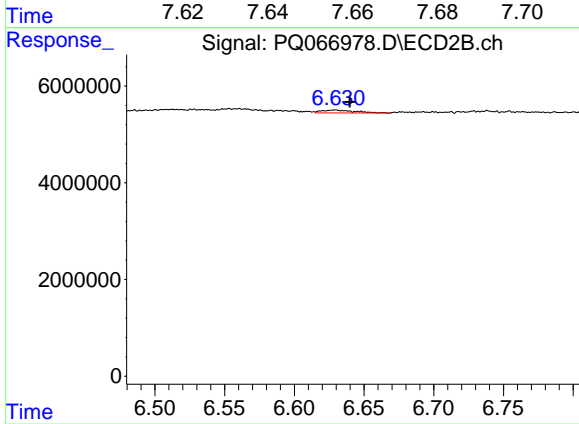
#41 AR-1268-1

R.T.: 6.553 min
 Delta R.T.: -0.024 min
 Response: 2133893
 Conc: 2.43 ng/ml



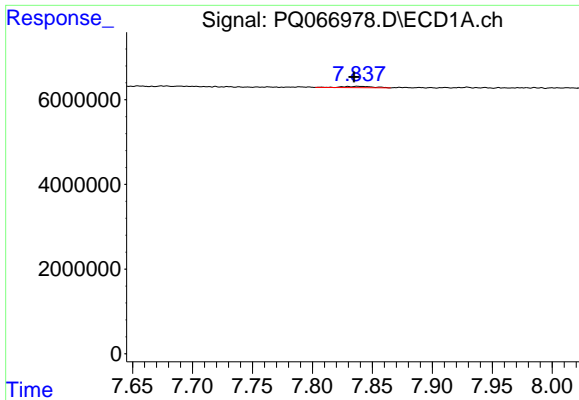
#42 AR-1268-2

R.T.: 7.654 min
 Delta R.T.: 0.003 min
 Response: 65053
 Conc: 0.12 ng/ml



#42 AR-1268-2

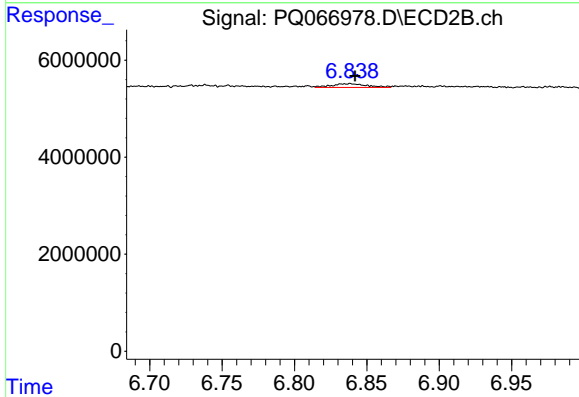
R.T.: 6.629 min
 Delta R.T.: -0.010 min
 Response: 947541
 Conc: 1.18 ng/ml



#43 AR-1268-3

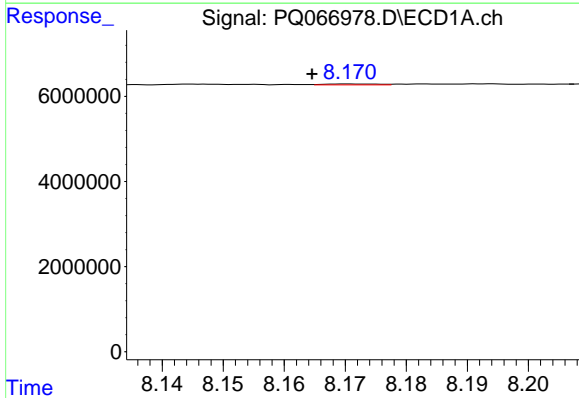
R.T.: 7.837 min
 Delta R.T.: 0.003 min
 Response: 532529
 Conc: 1.14 ng/ml

Instrument :
 ECD_Q
 ClientSampleId :
 AR1242CCC500



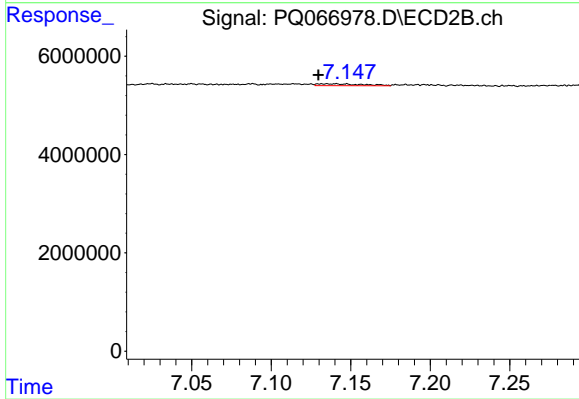
#43 AR-1268-3

R.T.: 6.839 min
 Delta R.T.: -0.003 min
 Response: 1296765
 Conc: 1.87 ng/ml



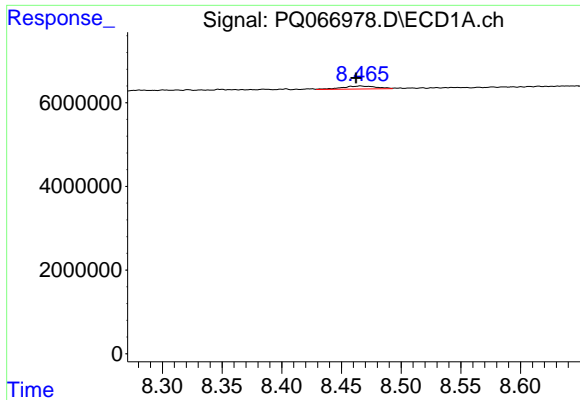
#44 AR-1268-4

R.T.: 8.171 min
 Delta R.T.: 0.006 min
 Response: 124772
 Conc: 0.71 ng/ml



#44 AR-1268-4

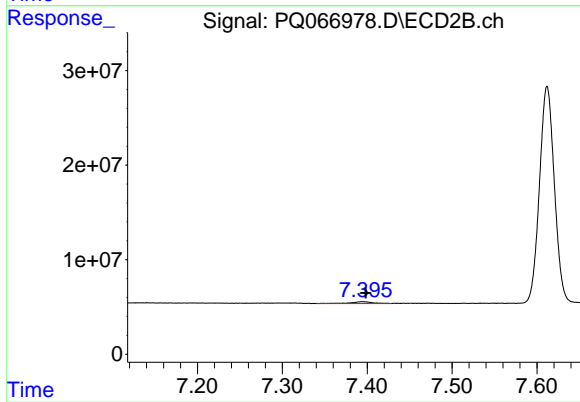
R.T.: 7.135 min
 Delta R.T.: 0.005 min
 Response: 738628
 Conc: 2.60 ng/ml



#45 AR-1268-5

R.T.: 8.466 min
Delta R.T.: 0.004 min
Response: 1443201
Conc: 1.08 ng/ml

Instrument :
ECD_Q
ClientSampleId :
AR1242CCC500



#45 AR-1268-5

R.T.: 7.395 min
Delta R.T.: -0.004 min
Response: 3229438
Conc: 1.58 ng/ml