

Data Path : Z:\pestpcbsrv\HPCHEM1\ECD\_Q\Data\PQ060818\  
 Data File : PQ029713.D  
 Signal(s) : Signal #1: ECD1A.ch Signal #2: ECD2B.ch  
 Acq On : 08 Jun 2018 20:57  
 Operator : UA/SM  
 Sample : J3110-01MSD  
 Misc :  
 ALS Vial : 147 Sample Multiplier: 1

**Instrument :**  
 ECD\_Q  
**Client Sampled :**  
 SB-01(5-6)MSD

**Manual Integrations**  
**APPROVED**  
 Sohil  
 6/12/2018 3:32:32 PM

Integration File signal 1: autoint1.e  
 Integration File signal 2: autoint2.e  
 Quant Time: Jun 12 15:25:23 2018  
 Quant Method : \\TERASTORAGE\Terastorage\pestpcbsrv\HPCHEM1\ECD\_Q\Method\PQ060618.M  
 Quant Title : GC EXTRACTABLES  
 QLast Update : Thu Jun 07 01:13:06 2018  
 Response via : Initial Calibration  
 Integrator: ChemStation

Volume Inj. : 2 µl  
 Signal #1 Phase : ZB-MR2 Signal #2 Phase: ZB-MR2  
 Signal #1 Info : 30Mx0.32mmx 0.50µ Signal #2 Info : 30M x 0.32mm x 0.25µm

Compound	RT#1	RT#2	Resp#1	Resp#2	ng/ml	ng/ml
-----						
System Monitoring Compounds						
1) SA Tetrachlo...	4.597	3.771	1167.9E6	108.8E6	7.202m	12.061 #
2) SA Decachlor...	10.329	8.712	1288.8E6	135.6E6	10.227	10.447
Target Compounds						
3) L1 AR-1016-1	4.961	4.620	3026.1E6	5200.8E6	1361.694	23370.443 #
4) L1 AR-1016-2	5.490	5.033	32794.9E6	6851.3E6	11922.109	29706.960 #
5) L1 AR-1016-3	5.835	5.073	15913.0E6	9690.0E6	4436.185	50399.103 #
6) L1 AR-1016-4	6.027	5.113	51173.3E6	10635.6E6	21477.981	43839.811 #
7) L1 AR-1016-5	6.373	5.283	52359.5E6	12386.7E6	16667.631	47948.098 #
21) L5 AR-1248-1	6.235	5.073	53095.1E6	9690.0E6	13899.470	36465.909 #
22) L5 AR-1248-2	6.373	5.113	52359.5E6	10635.6E6	16061.466	37872.936 #
23) L5 AR-1248-3	6.637	5.283	80219.3E6	12360.7E6	17776.928m	36620.707m#
24) L5 AR-1248-4	6.641	5.628	51669.7E6	19908.2E6	11407.330m	39051.602m#
25) L5 AR-1248-5	6.792	5.668	59308.8E6	14594.0E6	13747.204m	39464.831m#
31) L7 AR-1260-1	7.350	6.299	58671.3E6	28358.4E6	11566.078	49366.949 #
32) L7 AR-1260-2	7.603	6.636	101132.2E6	28210.1E6	15527.799	42254.370 #
33) L7 AR-1260-3	7.893	7.101	93184.1E6	22168.4E6	11612.399	38403.284 #
34) L7 AR-1260-4	8.507	7.347	71316.4E6	41593.9E6	5468.706	27865.190 #
35) L7 AR-1260-5	8.837	7.685	83671.9E6	36005.8E6	11499.544	32968.660 #
-----						

(f)=RT Delta > 1/2 Window (#)=Amounts differ by > 25% (m)=manual int.

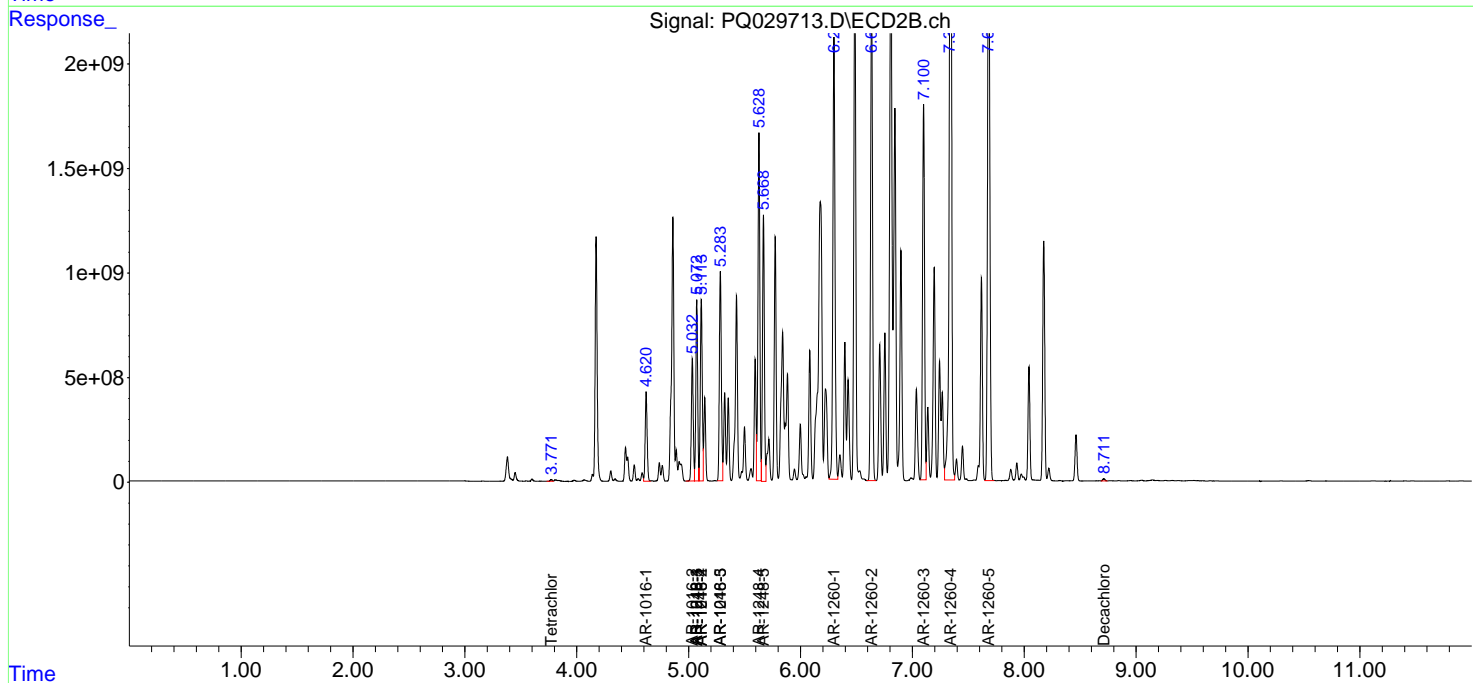
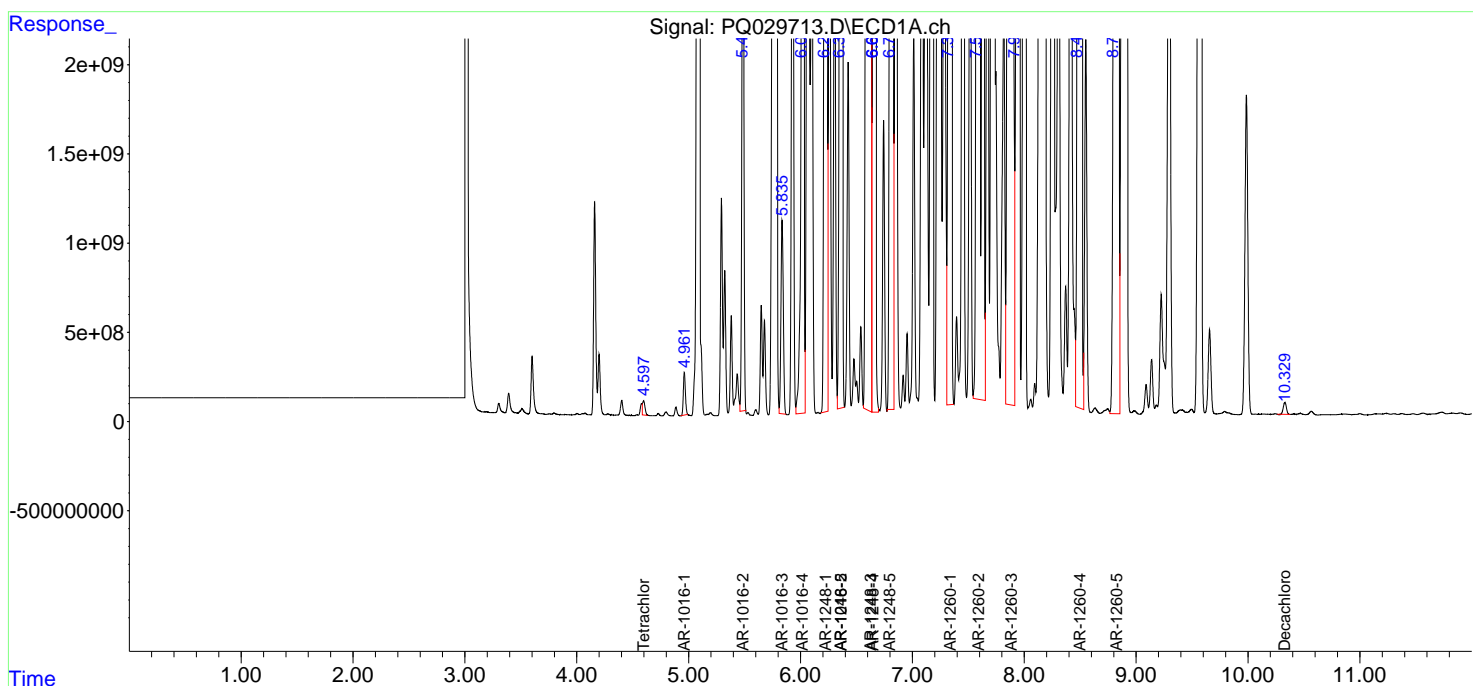
Data Path : Z:\pestpcbsrv\HPCHEM1\ECD\_Q\Data\PQ060818\  
 Data File : PQ029713.D  
 Signal(s) : Signal #1: ECD1A.ch Signal #2: ECD2B.ch  
 Acq On : 08 Jun 2018 20:57  
 Operator : UA/SM  
 Sample : J3110-01MSD  
 Misc :  
 ALS Vial : 147 Sample Multiplier: 1

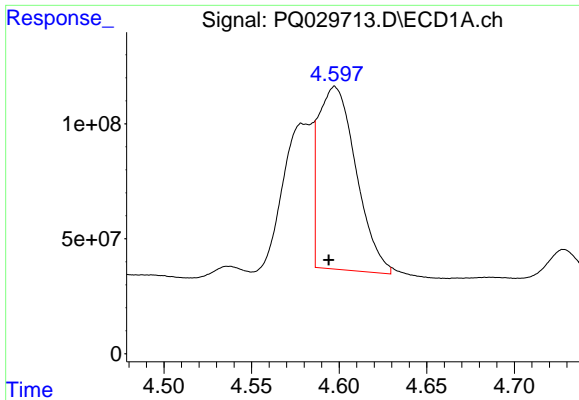
Instrument :  
 ECD\_Q  
 Client Sampled :  
 SB-01(5-6)MSD

Manual Integrations  
**APPROVED**  
 Sohil  
 6/12/2018 3:32:32 PM

Integration File signal 1: autoint1.e  
 Integration File signal 2: autoint2.e  
 Quant Time: Jun 12 15:25:23 2018  
 Quant Method : \\TERASTORAGE\Terastorage\pestpcbsrv\HPCHEM1\ECD\_Q\Method\PQ060618.M  
 Quant Title : GC EXTRACTABLES  
 QLast Update : Thu Jun 07 01:13:06 2018  
 Response via : Initial Calibration  
 Integrator: ChemStation

Volume Inj. : 2 µl  
 Signal #1 Phase : ZB-MR1 Signal #2 Phase: ZB-MR2  
 Signal #1 Info : 30Mx0.32mmx 0.50µ Signal #2 Info : 30M x 0.32mm x 0.25µm





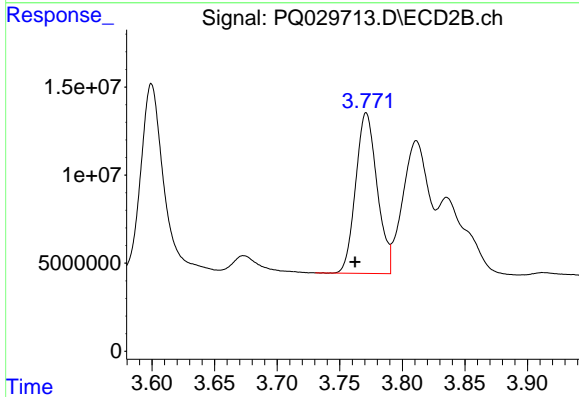
#1 Tetrachloro-m-xylene

R.T.: 4.597 min  
 Delta R.T.: 0.003 min  
 Response: 1167885747  
 Conc: 7.20 ng/ml m

Instrument :  
 ECD\_Q  
 ClientSampled :  
 SB-01(5-6)MSD

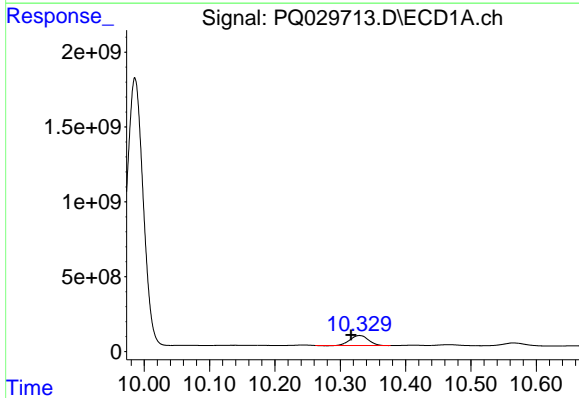
Manual Integrations  
 APPROVED

Sohil  
 6/12/2018 3:32:32 PM



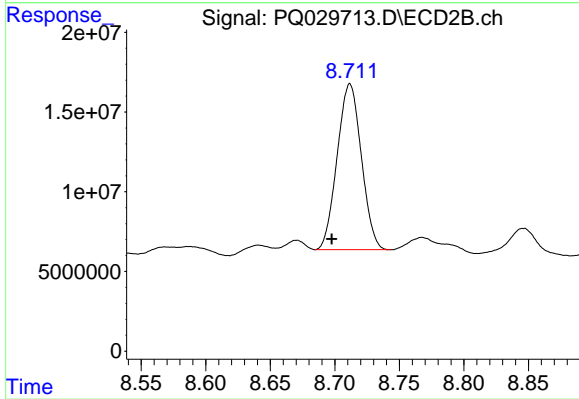
#1 Tetrachloro-m-xylene

R.T.: 3.771 min  
 Delta R.T.: 0.009 min  
 Response: 108844289  
 Conc: 12.06 ng/ml



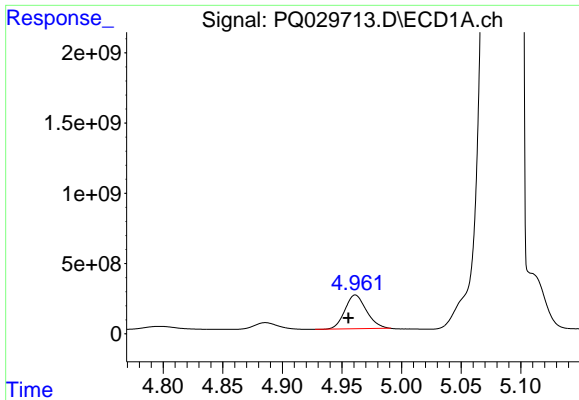
#2 Decachlorobiphenyl

R.T.: 10.329 min  
 Delta R.T.: 0.013 min  
 Response: 1288766556  
 Conc: 10.23 ng/ml



#2 Decachlorobiphenyl

R.T.: 8.712 min  
 Delta R.T.: 0.014 min  
 Response: 135609054  
 Conc: 10.45 ng/ml

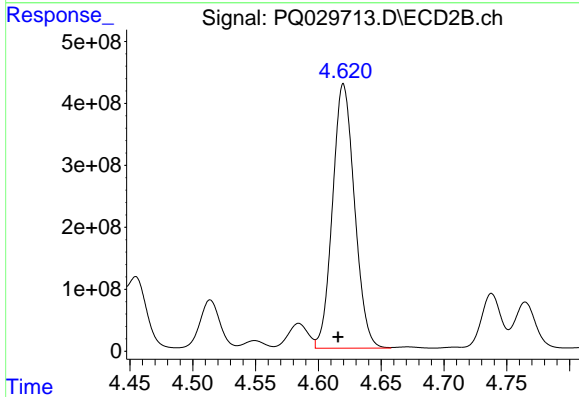


#3 AR-1016-1

R.T.: 4.961 min  
 Delta R.T.: 0.006 min  
 Response: 3026065046  
 Conc: 1361.69 ng/ml

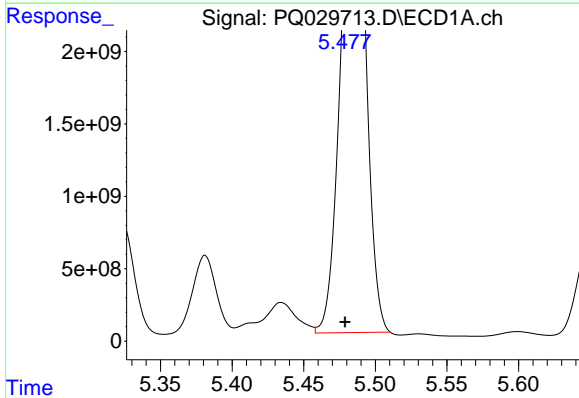
**Instrument :**  
 ECD\_Q  
**ClientSampled :**  
 SB-01(5-6)MSD

**Manual Integrations**  
**APPROVED**  
 Sohil  
 6/12/2018 3:32:32 PM



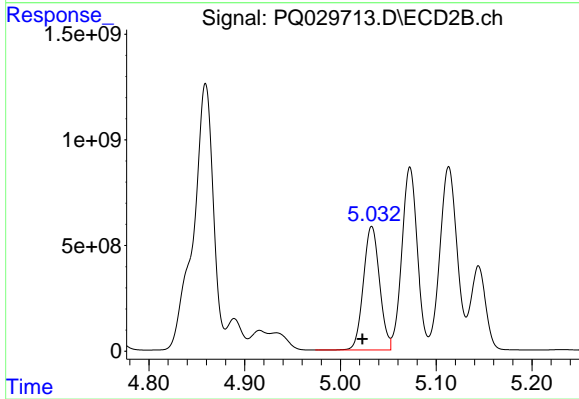
#3 AR-1016-1

R.T.: 4.620 min  
 Delta R.T.: 0.004 min  
 Response: 5200833142  
 Conc: 23370.44 ng/ml



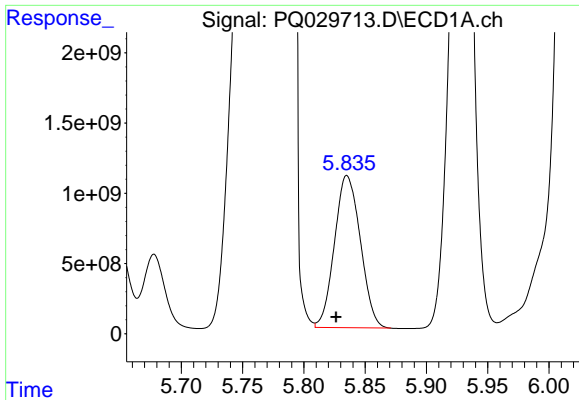
#4 AR-1016-2

R.T.: 5.490 min  
 Delta R.T.: 0.011 min  
 Response: 32794947336  
 Conc: 11922.11 ng/ml



#4 AR-1016-2

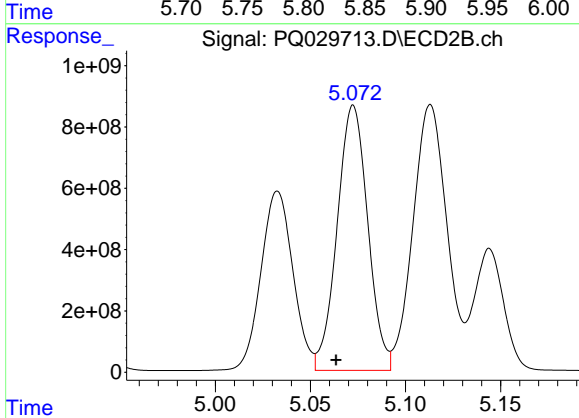
R.T.: 5.033 min  
 Delta R.T.: 0.010 min  
 Response: 6851334356  
 Conc: 29706.96 ng/ml



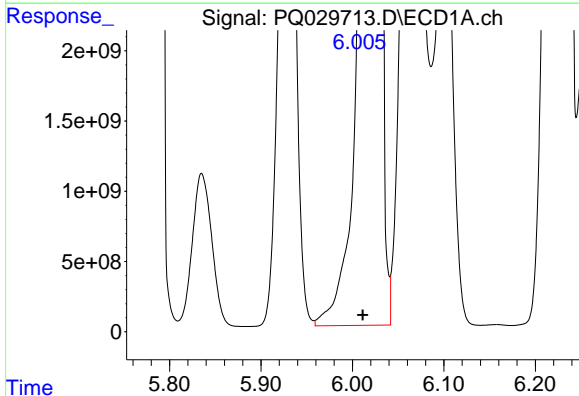
#5 AR-1016-3  
 R.T.: 5.835 min  
 Delta R.T.: 0.009 min  
 Response: 15913027107  
 Conc: 4436.18 ng/ml

**Instrument :**  
 ECD\_Q  
**ClientSampled :**  
 SB-01(5-6)MSD

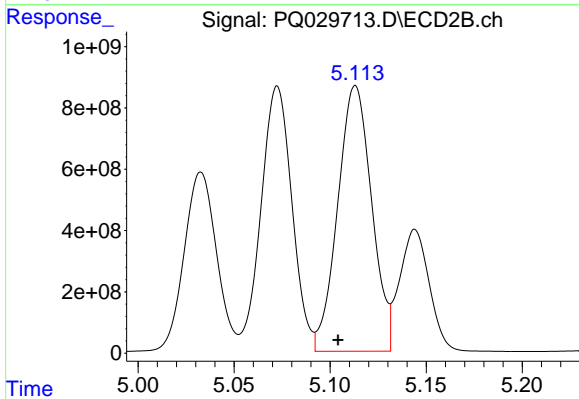
**Manual Integrations**  
**APPROVED**  
 Sohil  
 6/12/2018 3:32:32 PM



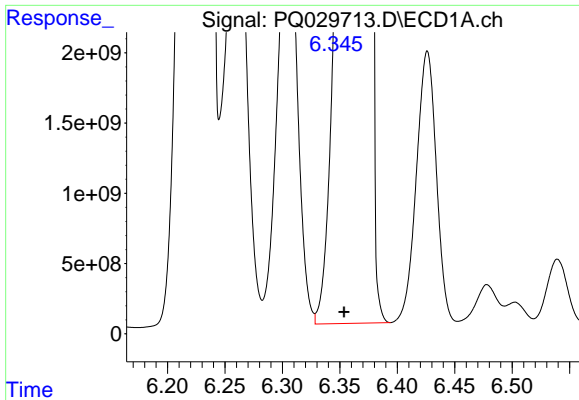
#5 AR-1016-3  
 R.T.: 5.073 min  
 Delta R.T.: 0.009 min  
 Response: 9689958075  
 Conc: 50399.10 ng/ml



#6 AR-1016-4  
 R.T.: 6.027 min  
 Delta R.T.: 0.015 min  
 Response: 51173309649  
 Conc: 21477.98 ng/ml



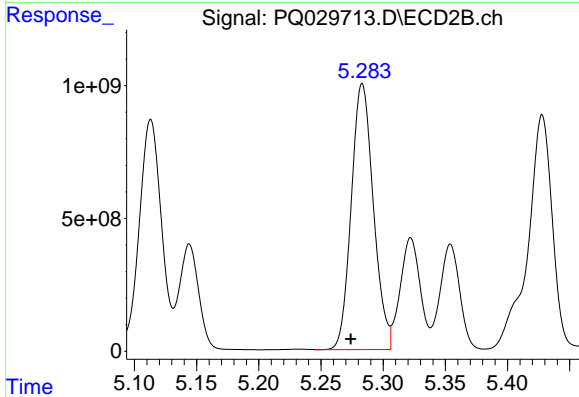
#6 AR-1016-4  
 R.T.: 5.113 min  
 Delta R.T.: 0.009 min  
 Response: 10635579741  
 Conc: 43839.81 ng/ml



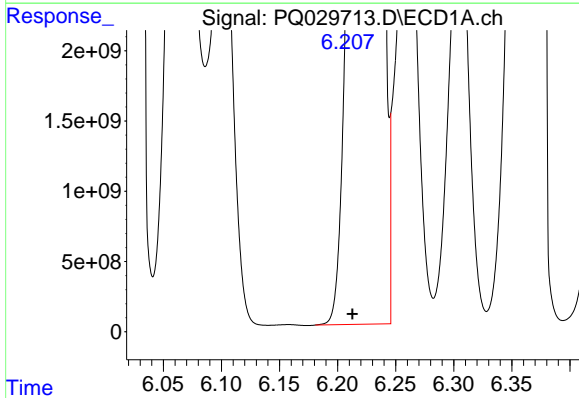
#7 AR-1016-5  
 R.T.: 6.373 min  
 Delta R.T.: 0.020 min  
 Response: 52359540597  
 Conc: 16667.63 ng/ml

**Instrument :**  
 ECD\_Q  
**ClientSampled :**  
 SB-01(5-6)MSD

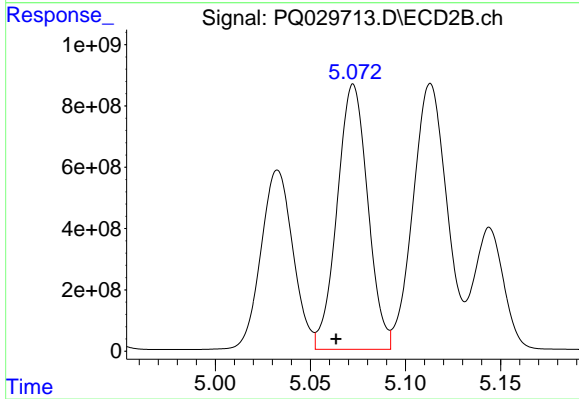
**Manual Integrations**  
**APPROVED**  
 Sohil  
 6/12/2018 3:32:32 PM



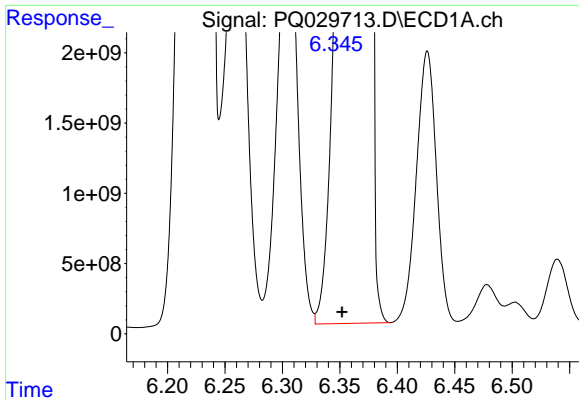
#7 AR-1016-5  
 R.T.: 5.283 min  
 Delta R.T.: 0.009 min  
 Response: 12386661514  
 Conc: 47948.10 ng/ml



#21 AR-1248-1  
 R.T.: 6.235 min  
 Delta R.T.: 0.022 min  
 Response: 53095143448  
 Conc: 13899.47 ng/ml



#21 AR-1248-1  
 R.T.: 5.073 min  
 Delta R.T.: 0.009 min  
 Response: 9689958075  
 Conc: 36465.91 ng/ml

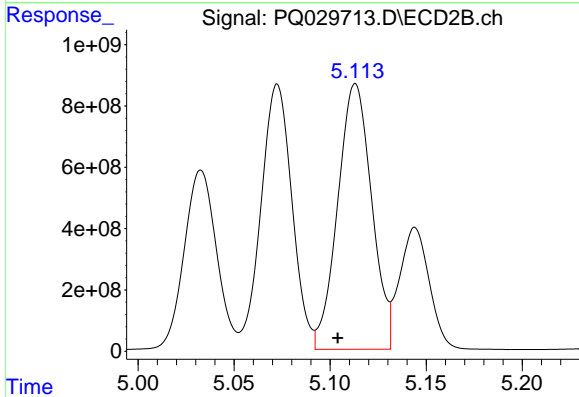


#22 AR-1248-2

R.T.: 6.373 min  
 Delta R.T.: 0.021 min  
 Response: 52359540597  
 Conc: 16061.47 ng/ml

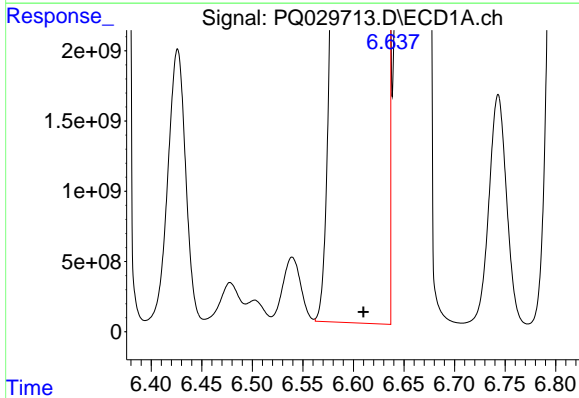
**Instrument :**  
 ECD\_Q  
**ClientSampled :**  
 SB-01(5-6)MSD

**Manual Integrations**  
**APPROVED**  
 Sohil  
 6/12/2018 3:32:32 PM



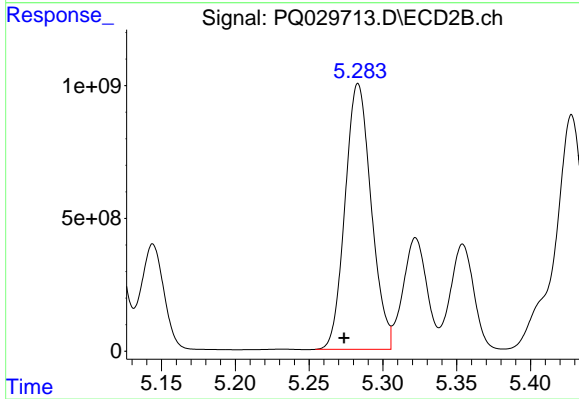
#22 AR-1248-2

R.T.: 5.113 min  
 Delta R.T.: 0.009 min  
 Response: 10635579741  
 Conc: 37872.94 ng/ml



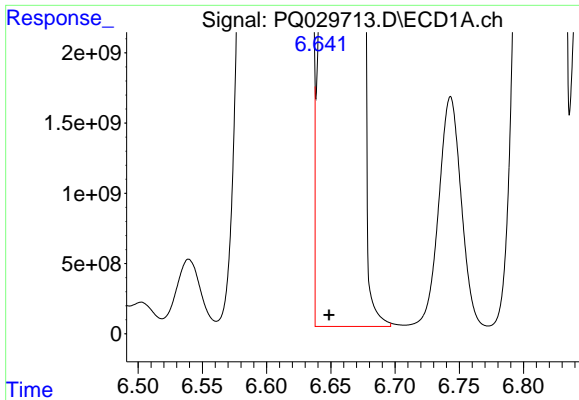
#23 AR-1248-3

R.T.: 6.637 min  
 Delta R.T.: 0.027 min  
 Response: 80219255359  
 Conc: 17776.93 ng/ml m



#23 AR-1248-3

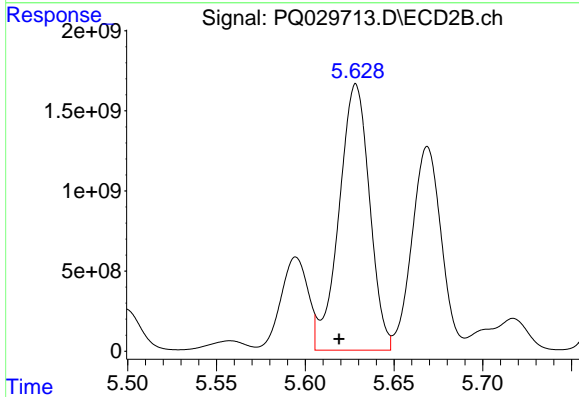
R.T.: 5.283 min  
 Delta R.T.: 0.009 min  
 Response: 12360687477  
 Conc: 36620.71 ng/ml m



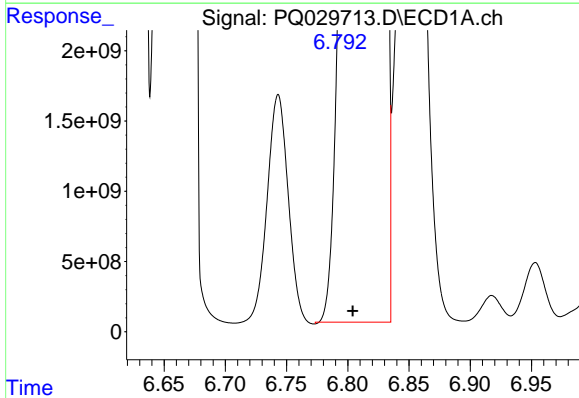
#24 AR-1248-4  
 R.T.: 6.641 min  
 Delta R.T.: -0.008 min  
 Response: 51669712923  
 Conc: 11407.33 ng/ml m

**Instrument :**  
 ECD\_Q  
**ClientSampled :**  
 SB-01(5-6)MSD

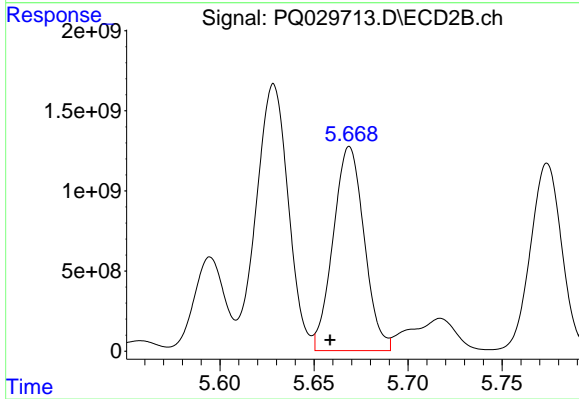
**Manual Integrations**  
**APPROVED**  
 Sohil  
 6/12/2018 3:32:32 PM



#24 AR-1248-4  
 R.T.: 5.628 min  
 Delta R.T.: 0.009 min  
 Response: 19908198258  
 Conc: 39051.60 ng/ml m

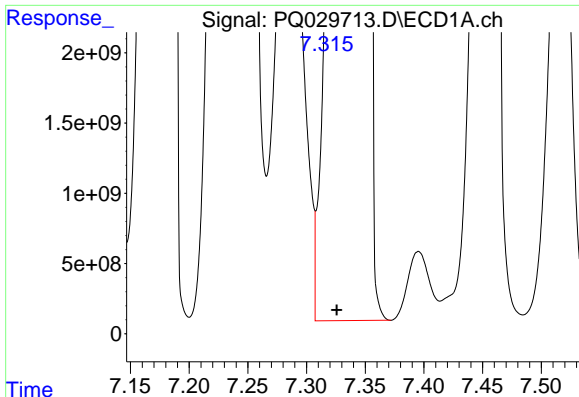


#25 AR-1248-5  
 R.T.: 6.792 min  
 Delta R.T.: -0.013 min  
 Response: 59308794972  
 Conc: 13747.20 ng/ml m



#25 AR-1248-5  
 R.T.: 5.668 min  
 Delta R.T.: 0.010 min  
 Response: 14593999902  
 Conc: 39464.83 ng/ml m



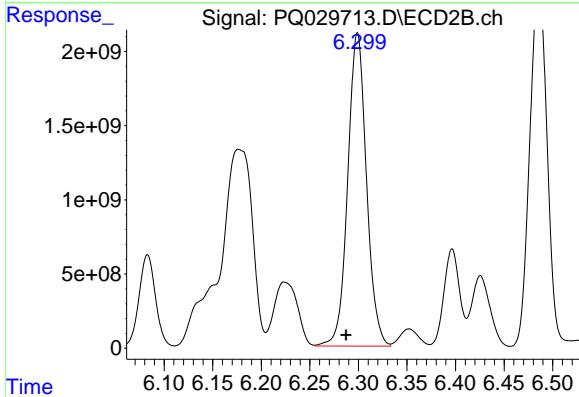


#31 AR-1260-1

R.T.: 7.350 min  
 Delta R.T.: 0.024 min  
 Response: 58671341012  
 Conc: 11566.08 ng/ml

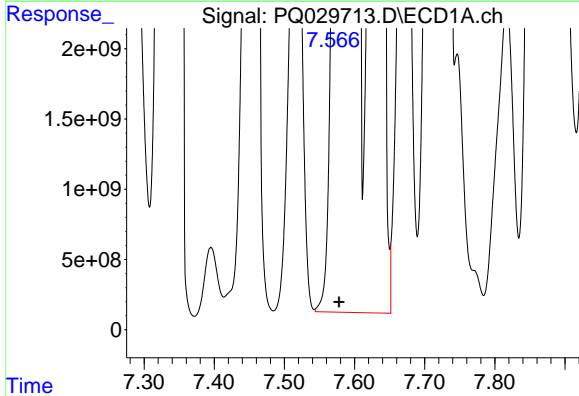
**Instrument :**  
 ECD\_Q  
**ClientSampled :**  
 SB-01(5-6)MSD

**Manual Integrations**  
**APPROVED**  
 Sohil  
 6/12/2018 3:32:32 PM



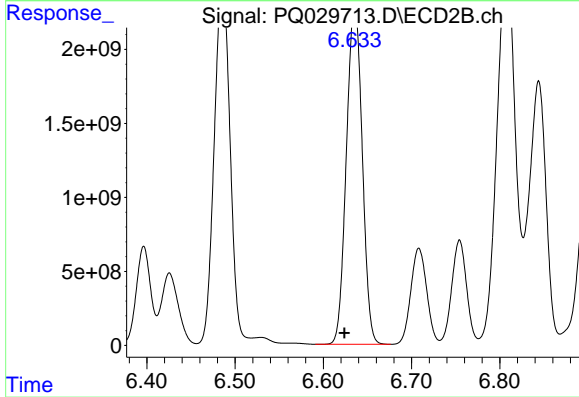
#31 AR-1260-1

R.T.: 6.299 min  
 Delta R.T.: 0.012 min  
 Response: 28358410746  
 Conc: 49366.95 ng/ml



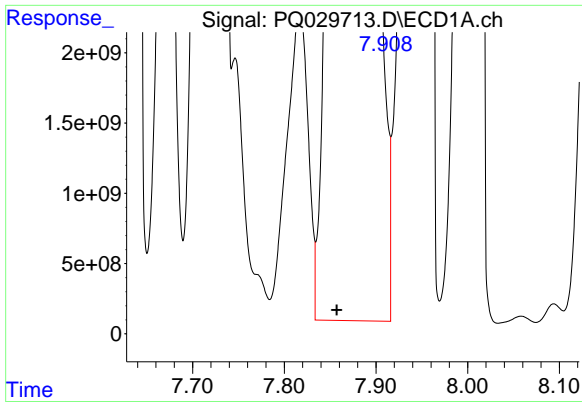
#32 AR-1260-2

R.T.: 7.603 min  
 Delta R.T.: 0.025 min  
 Response: 1.01132e+011  
 Conc: 15527.80 ng/ml



#32 AR-1260-2

R.T.: 6.636 min  
 Delta R.T.: 0.012 min  
 Response: 28210067422  
 Conc: 42254.37 ng/ml



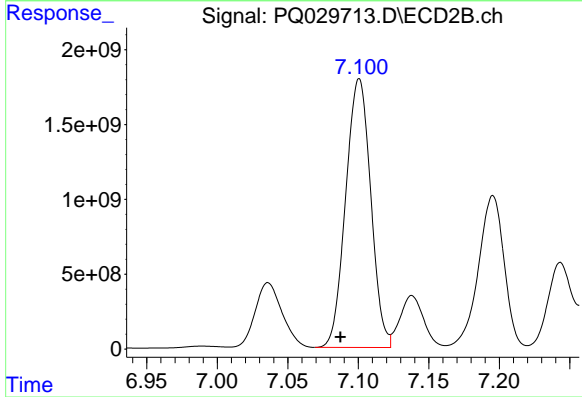
#33 AR-1260-3

R.T.: 7.893 min  
 Delta R.T.: 0.036 min  
 Response: 93184140184  
 Conc: 11612.40 ng/ml

Instrument :  
 ECD\_Q  
 ClientSampled :  
 SB-01(5-6)MSD

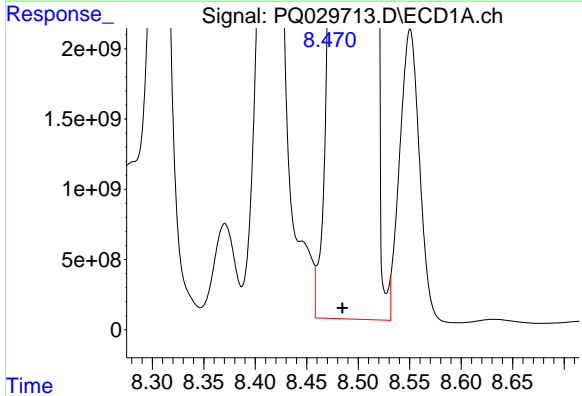
Manual Integrations  
 APPROVED

Sohil  
 6/12/2018 3:32:32 PM



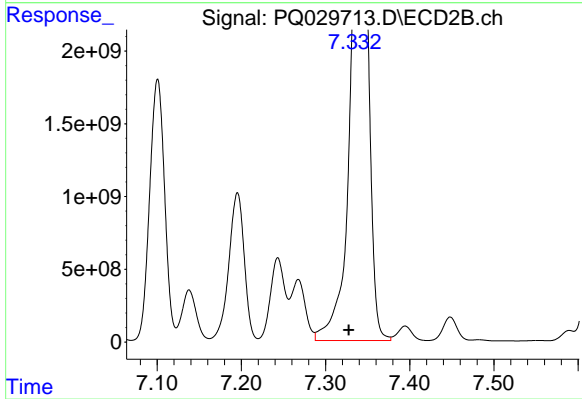
#33 AR-1260-3

R.T.: 7.101 min  
 Delta R.T.: 0.013 min  
 Response: 22168432229  
 Conc: 38403.28 ng/ml



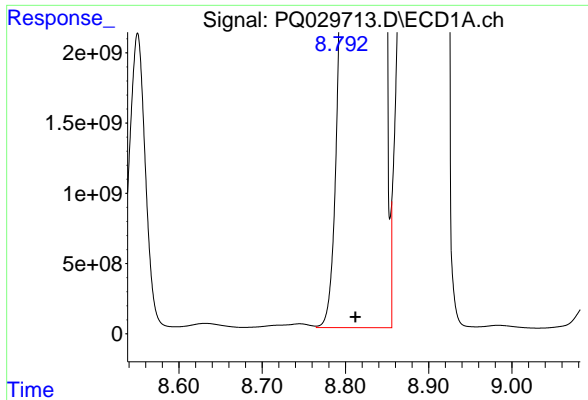
#34 AR-1260-4

R.T.: 8.507 min  
 Delta R.T.: 0.022 min  
 Response: 71316373043  
 Conc: 5468.71 ng/ml



#34 AR-1260-4

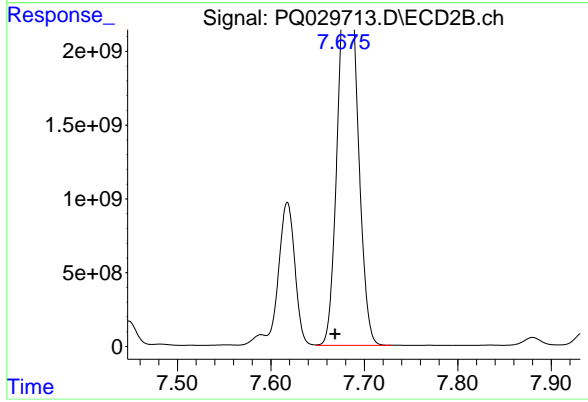
R.T.: 7.347 min  
 Delta R.T.: 0.019 min  
 Response: 41593869072  
 Conc: 27865.19 ng/ml



#35 AR-1260-5  
R.T.: 8.837 min  
Delta R.T.: 0.024 min  
Response: 83671892954  
Conc: 11499.54 ng/ml

**Instrument :**  
ECD\_Q  
**ClientSampled :**  
SB-01(5-6)MSD

**Manual Integrations**  
**APPROVED**  
Sohil  
6/12/2018 3:32:32 PM



#35 AR-1260-5  
R.T.: 7.685 min  
Delta R.T.: 0.016 min  
Response: 36005797374  
Conc: 32968.66 ng/ml