

Data Path : Z:\pestpcbsrv\HPCHEM1\ECD\_Q\Data\PQ061423\  
Data File : PQ061401.D  
Signal(s) : Signal #1: ECD1A.ch Signal #2: ECD2B.ch  
Acq On : 14 Jun 2023 08:49  
Operator : YP\AJ  
Sample : HEXANE  
Misc :  
ALS Vial : 1 Sample Multiplier: 1

Instrument :  
ECD\_Q  
ClientSampleId :  
HEXANE

Integration File signal 1: autoint1.e  
Integration File signal 2: autoint2.e  
Quant Time: Jun 14 22:13:49 2023  
Quant Method : Z:\pestpcbsrv\HPCHEM1\ECD\_Q\Method\PQ060923.M  
Quant Title : GC EXTRACTABLES  
QLast Update : Fri Jun 09 18:19:31 2023  
Response via : Initial Calibration  
Integrator: ChemStation

Volume Inj. : 2 µl  
Signal #1 Phase : ZB-MR1 Signal #2 Phase: ZB-MR2  
Signal #1 Info : 30Mx0.32mmx 0.50µ Signal #2 Info : 30M x 0.32mm x 0.25µm

Compound	RT#1	RT#2	Resp#1	Resp#2	ng/ml	ng/ml
----------	------	------	--------	--------	-------	-------

-----  
System Monitoring Compounds

Target Compounds  
-----

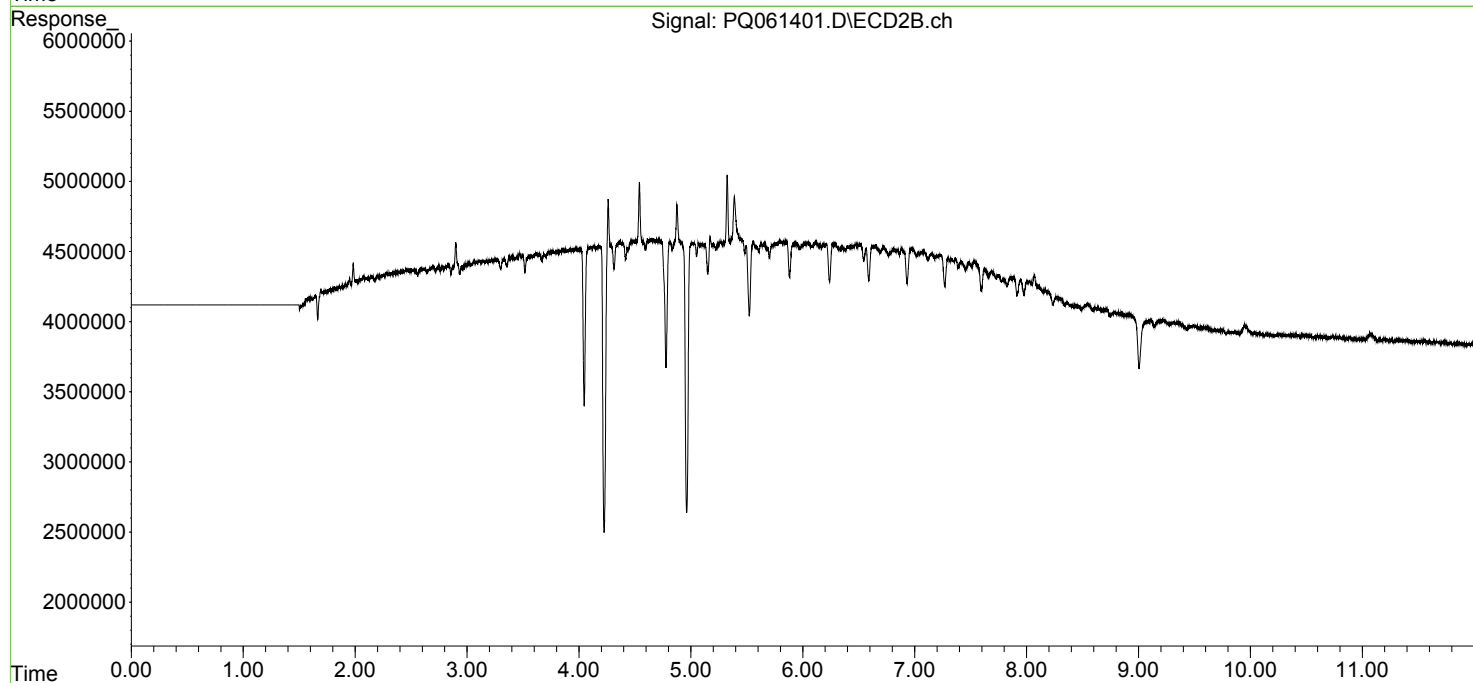
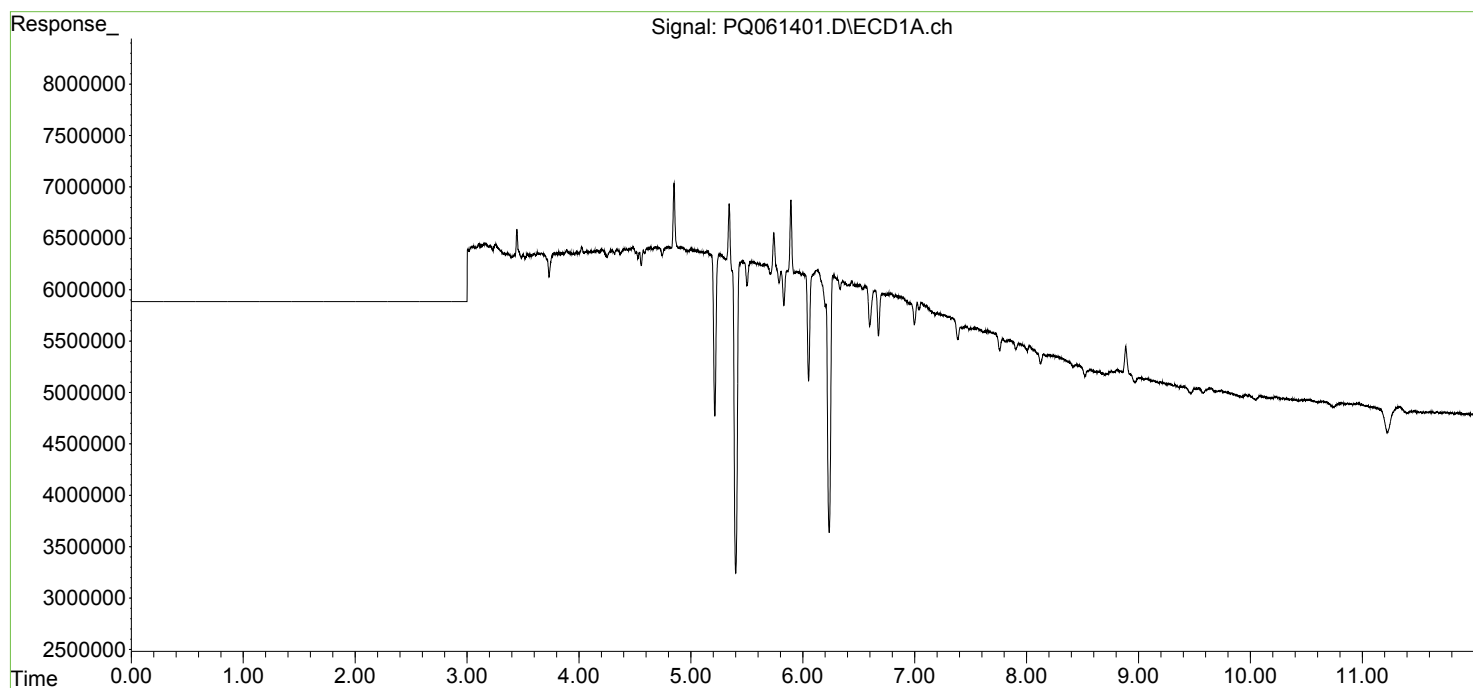
(f)=RT Delta > 1/2 Window (#)=Amounts differ by > 25% (m)=manual int.

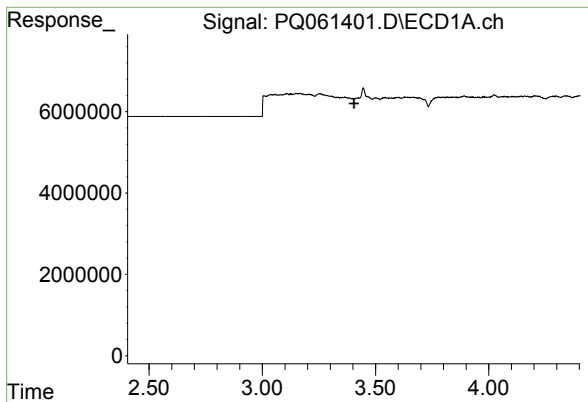
Data Path : Z:\pestpcbsrv\HPCHEM1\ECD\_Q\Data\PQ061423\  
Data File : PQ061401.D  
Signal(s) : Signal #1: ECD1A.ch Signal #2: ECD2B.ch  
Acq On : 14 Jun 2023 08:49  
Operator : YP\AJ  
Sample : HEXANE  
Misc :  
ALS Vial : 1 Sample Multiplier: 1

Instrument :  
ECD\_Q  
ClientSampleId :  
HEXANE

Integration File signal 1: autoint1.e  
Integration File signal 2: autoint2.e  
Quant Time: Jun 14 22:13:49 2023  
Quant Method : Z:\pestpcbsrv\HPCHEM1\ECD\_Q\Method\PQ060923.M  
Quant Title : GC EXTRACTABLES  
QLast Update : Fri Jun 09 18:19:31 2023  
Response via : Initial Calibration  
Integrator: ChemStation

Volume Inj. : 2  $\mu$ l  
Signal #1 Phase : ZB-MR1 Signal #2 Phase: ZB-MR2  
Signal #1 Info : 30Mx0.32mmx 0.50 $\mu$  Signal #2 Info : 30M x 0.32mm x 0.25 $\mu$ m

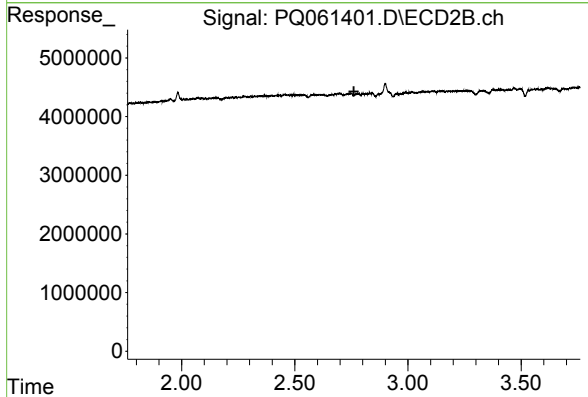




#1 Tetrachloro-m-xylene

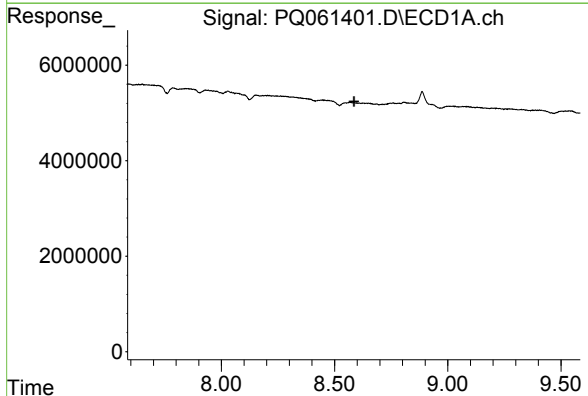
R.T.: 0.000 min  
 Exp R.T. : 3.405 min  
 Response: 0  
 Conc: N.D.

Instrument :  
 ECD\_Q  
 ClientSampleId :  
 HEXANE



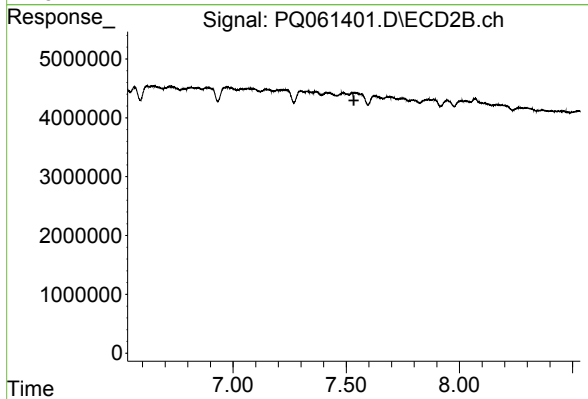
#1 Tetrachloro-m-xylene

R.T.: 0.000 min  
 Exp R.T. : 2.761 min  
 Response: 0  
 Conc: N.D.



#2 Decachlorobiphenyl

R.T.: 0.000 min  
 Exp R.T. : 8.586 min  
 Response: 0  
 Conc: N.D.



#2 Decachlorobiphenyl

R.T.: 0.000 min  
 Exp R.T. : 7.534 min  
 Response: 0  
 Conc: N.D.