

Data Path : Z:\pestpcbsrv\HPCHEM1\ECD_Q\Data\PQ061523\
 Data File : PQ061453.D
 Signal(s) : Signal #1: ECD1A.ch Signal #2: ECD2B.ch
 Acq On : 15 Jun 2023 16:03
 Operator : YP\AJ
 Sample : 03229-01
 Misc :
 ALS Vial : 20 Sample Multiplier: 1

Instrument :
 ECD_Q
 ClientSampleId :

Integration File signal 1: autoint1.e
 Integration File signal 2: autoint2.e
 Quant Time: Jun 15 20:59:50 2023
 Quant Method : Z:\pestpcbsrv\HPCHEM1\ECD_Q\Method\PQ060923.M
 Quant Title : GC EXTRACTABLES
 QLast Update : Fri Jun 09 18:19:31 2023
 Response via : Initial Calibration
 Integrator: ChemStation

Volume Inj. : 2 µl
 Signal #1 Phase : ZB-MR1 Signal #2 Phase: ZB-MR2
 Signal #1 Info : 30Mx0.32mmx 0.50µ Signal #2 Info : 30M x 0.32mm x 0.25µm

Compound	RT#1	RT#2	Resp#1	Resp#2	ng/ml	ng/ml

System Monitoring Compounds						
1) SA Tetrachlo...	3.404	2.760	104.1E6	61645311	23.156	23.085
2) SA Decachlor...	8.586	7.534	77941033	73489829	23.137	21.895
Target Compounds						
3) L1 AR-1016-1	4.534f	3.773	-1731641	2725701	N.D.	26.427 #
4) L1 AR-1016-2	4.534	3.773	-1731641	2725701	N.D.	18.295 #
5) L1 AR-1016-3	4.593	3.950	604129	803625	4.251	10.169 #
6) L1 AR-1016-4	4.690	4.025f	987128	1292043	8.573	18.196 #
7) L1 AR-1016-5	4.995f	4.178	7792647	4757609	67.426	55.571
8) L2 AR-1221-1	3.587	2.990f	440957	469967	7.859	13.199 #
9) L2 AR-1221-2	3.683	3.049	2104818	273479	49.877	9.929 #
10) L2 AR-1221-3	3.745	3.105	1691777	159987	12.906	1.888 #
11) L3 AR-1232-1	3.745	3.105	1691777	159987	17.699	2.598 #
12) L3 AR-1232-2	4.246	3.773	2393343	2725701	43.566	39.562
13) L3 AR-1232-3	4.534	3.950	-1731641	803625	N.D.	22.224 #
14) L3 AR-1232-4	4.690	4.025	987128	1292043	18.605	40.087 #
15) L3 AR-1232-5	4.787	4.178	1015091	4757609	26.917	124.141 #
16) L4 AR-1242-1	4.534f	3.773	-1731641	2725701	N.D.	35.589 #
17) L4 AR-1242-2	4.534	3.773	-1731641	2725701	N.D.	24.595 #
18) L4 AR-1242-3	4.593	3.950	604129	803625	5.647	13.579 #
19) L4 AR-1242-4	4.690	4.025	987128	1292043	11.374	21.575 #
20) L4 AR-1242-5	0.000	4.504	0	7884110	N.D.	98.465 #
21) L5 AR-1248-1	4.534f	3.773	-1731641	2725701	N.D.	43.797 #
22) L5 AR-1248-2	4.787	4.025f	1015091	1292043	7.985	13.367 #
23) L5 AR-1248-3	4.995f	4.025	7792647	1292043	50.588	14.134 #
24) L5 AR-1248-4	5.339	4.178	21817806	4757609	128.530	42.017 #
25) L5 AR-1248-5	0.000	4.557	0	6273414	N.D.	56.961 #
26) L6 AR-1254-1	5.339	4.504	21817806	7884110	127.738	47.943 #
27) L6 AR-1254-2	5.534	4.661	3214827	2838455	12.023	18.872 #
28) L6 AR-1254-3	5.894	5.070	14359376	7235303	51.386	31.093 #
29) L6 AR-1254-4	6.228f	5.265	418011	300287	2.042	2.090
30) L6 AR-1254-5	6.620	5.681	4604584	3856849	19.521	16.908
31) L7 AR-1260-1	6.069	5.181	138100	2253015	0.622	13.098 #
32) L7 AR-1260-2	6.335	5.375	630575	3064803	2.370	14.789 #
33) L7 AR-1260-3	6.677	5.528	3786926	1122401	22.521	5.651 #
34) L7 AR-1260-4	6.911	5.951	1205798	167095	6.008	1.136 #
35) L7 AR-1260-5	7.238f	6.217	635454	704358	1.670	2.169 #
36) L8 AR-1262-1	6.677	5.739	3786926	1554773	12.649	6.415 #
37) L8 AR-1262-2	7.238f	6.217	635454	704358	1.260	1.612 #
38) L8 AR-1262-3	0.000	6.514	0	2158394	N.D.	11.977 #
39) L8 AR-1262-4	0.000	6.552	0	601782	N.D.	1.815 #
40) L8 AR-1262-5	8.059	7.045	851258	341127	4.998	2.126 #
41) L9 AR-1268-1	0.000	6.514	0	2158394	N.D.	4.393 #

Data Path : Z:\pestpcbsrv\HPCHEM1\ECD_Q\Data\PQ061523\
 Data File : PQ061453.D
 Signal(s) : Signal #1: ECD1A.ch Signal #2: ECD2B.ch
 Acq On : 15 Jun 2023 16:03
 Operator : YP\AJ
 Sample : 03229-01
 Misc :
 ALS Vial : 20 Sample Multiplier: 1

Instrument :
 ECD_Q
 ClientSampleId :

Integration File signal 1: autoint1.e
 Integration File signal 2: autoint2.e
 Quant Time: Jun 15 20:59:50 2023
 Quant Method : Z:\pestpcbsrv\HPCHEM1\ECD_Q\Method\PQ060923.M
 Quant Title : GC EXTRACTABLES
 QLast Update : Fri Jun 09 18:19:31 2023
 Response via : Initial Calibration
 Integrator: ChemStation

Volume Inj. : 2 µl
 Signal #1 Phase : ZB-MR1 Signal #2 Phase: ZB-MR2
 Signal #1 Info : 30Mx0.32mmx 0.50µ Signal #2 Info : 30M x 0.32mm x 0.25µm

	Compound	RT#1	RT#2	Resp#1	Resp#2	ng/ml	ng/ml
42)	L9 AR-1268-2	0.000	6.552	0	601782	N.D.	1.353 #
43)	L9 AR-1268-3	7.734	6.764	661029	1955913	1.603	4.996 #
44)	L9 AR-1268-4	8.059	7.045	851258	341127	4.809	2.032 #
45)	L9 AR-1268-5	0.000	7.311	0	13780484	N.D.	11.113 #

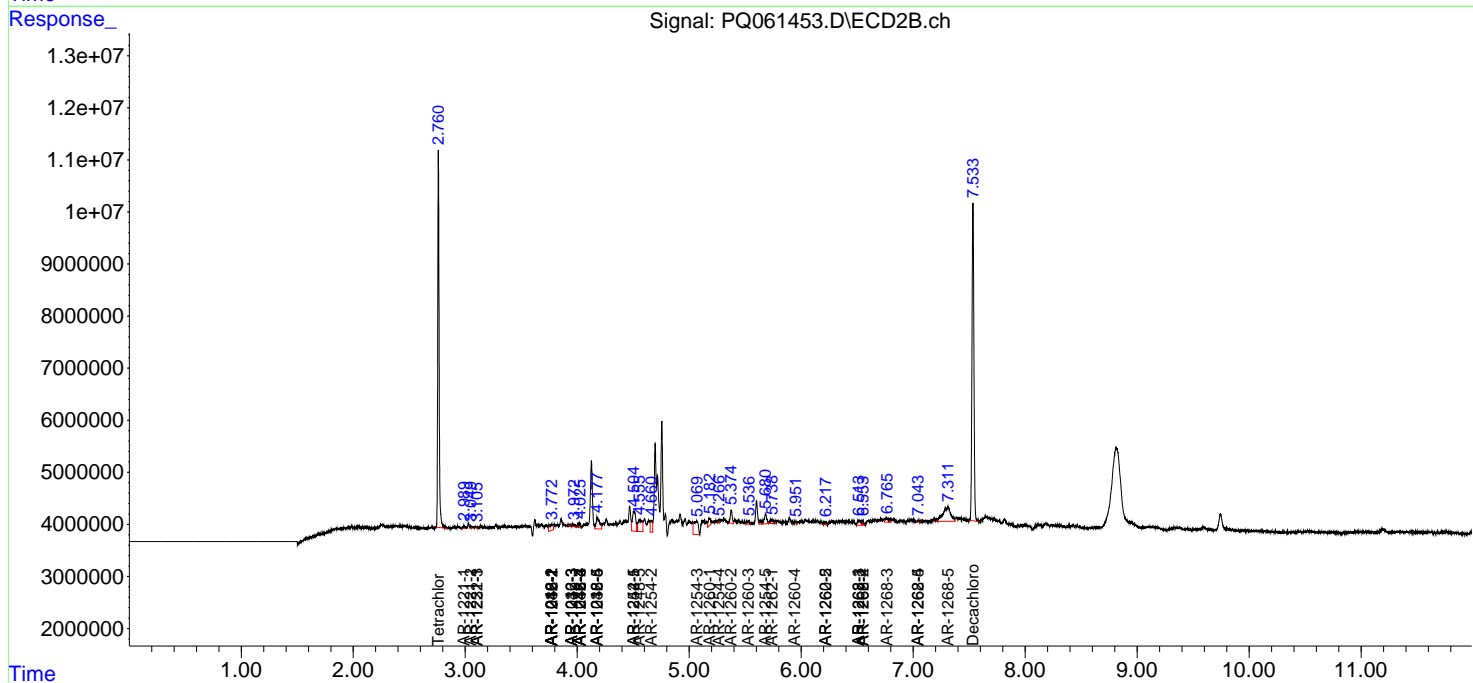
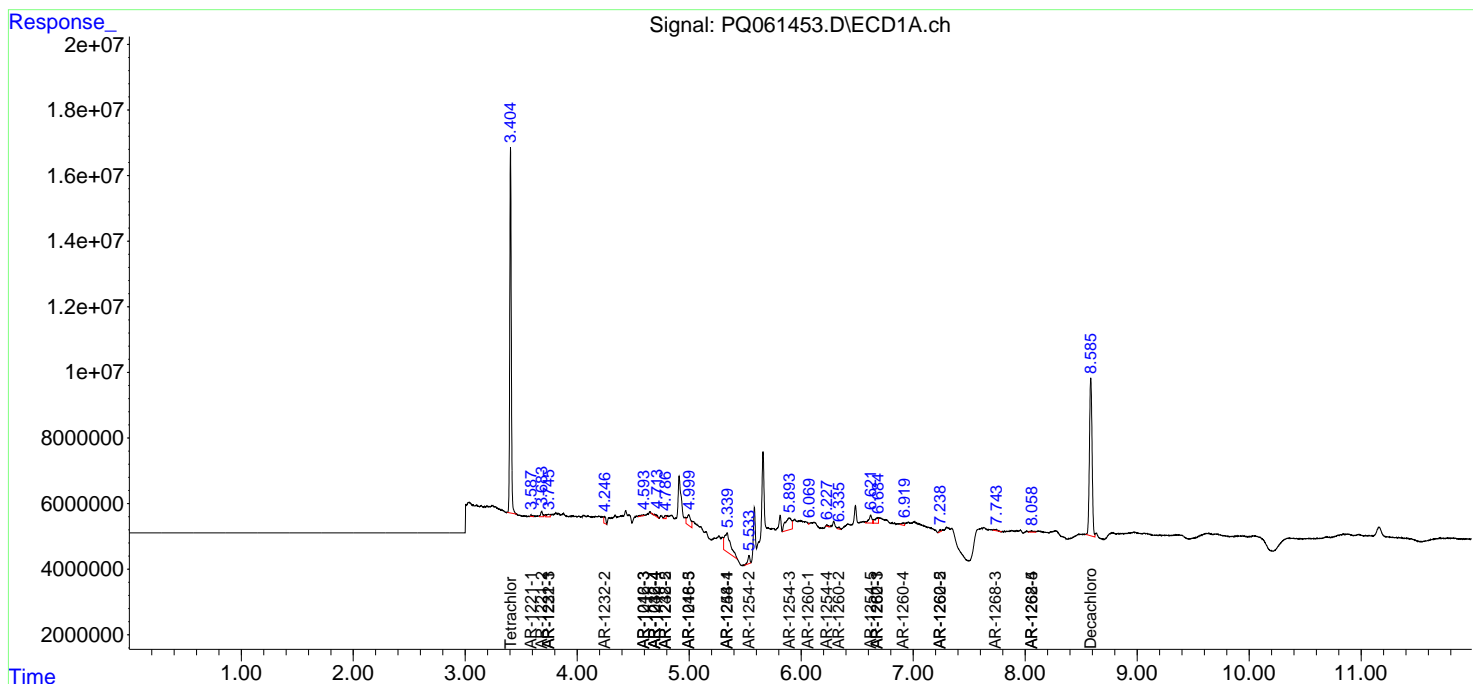
(f)=RT Delta > 1/2 Window (#)=Amounts differ by > 25% (m)=manual int.

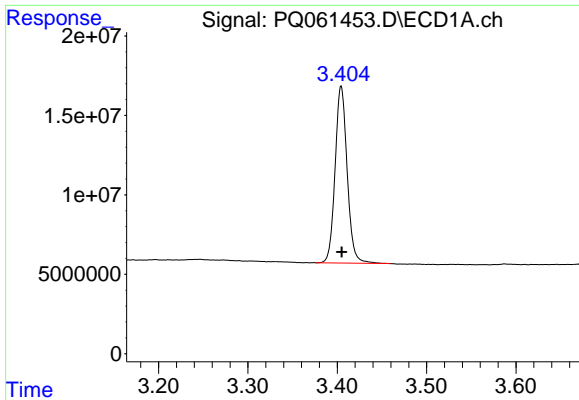
Data Path : Z:\pestpcbsrv\HPCHEM1\ECD_Q\Data\PQ061523\
 Data File : PQ061453.D
 Signal(s) : Signal #1: ECD1A.ch Signal #2: ECD2B.ch
 Acq On : 15 Jun 2023 16:03
 Operator : YP\AJ
 Sample : 03229-01
 Misc :
 ALS Vial : 20 Sample Multiplier: 1

Instrument :
 ECD_Q
 ClientSampleId :

Integration File signal 1: autoint1.e
 Integration File signal 2: autoint2.e
 Quant Time: Jun 15 20:59:50 2023
 Quant Method : Z:\pestpcbsrv\HPCHEM1\ECD_Q\Method\PQ060923.M
 Quant Title : GC EXTRACTABLES
 QLast Update : Fri Jun 09 18:19:31 2023
 Response via : Initial Calibration
 Integrator: ChemStation

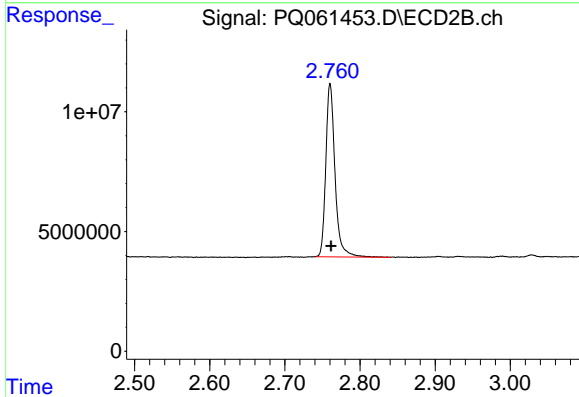
Volume Inj. : 2 µl
 Signal #1 Phase : ZB-MR1 Signal #2 Phase: ZB-MR2
 Signal #1 Info : 30Mx0.32mmx 0.50µ Signal #2 Info : 30M x 0.32mm x 0.25µm



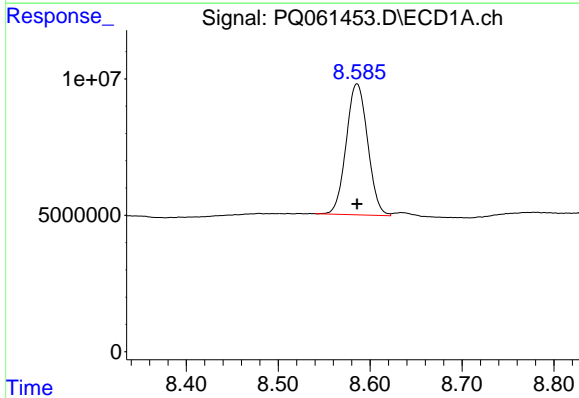


#1 Tetrachloro-m-xylene
 R.T.: 3.404 min
 Delta R.T.: 0.000 min
 Response: 104087980
 Conc: 23.16 ng/ml

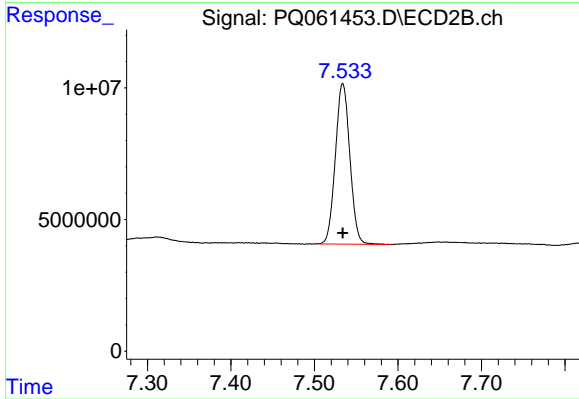
Instrument :
 ECD_Q
 ClientSampleId :



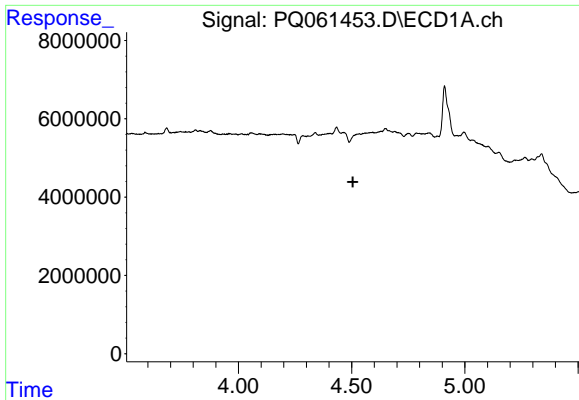
#1 Tetrachloro-m-xylene
 R.T.: 2.760 min
 Delta R.T.: -0.001 min
 Response: 61645311
 Conc: 23.09 ng/ml



#2 Decachlorobiphenyl
 R.T.: 8.586 min
 Delta R.T.: 0.000 min
 Response: 77941033
 Conc: 23.14 ng/ml



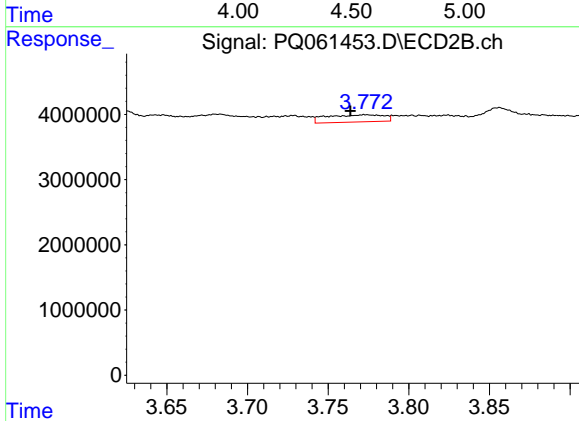
#2 Decachlorobiphenyl
 R.T.: 7.534 min
 Delta R.T.: 0.000 min
 Response: 73489829
 Conc: 21.89 ng/ml



#3 AR-1016-1

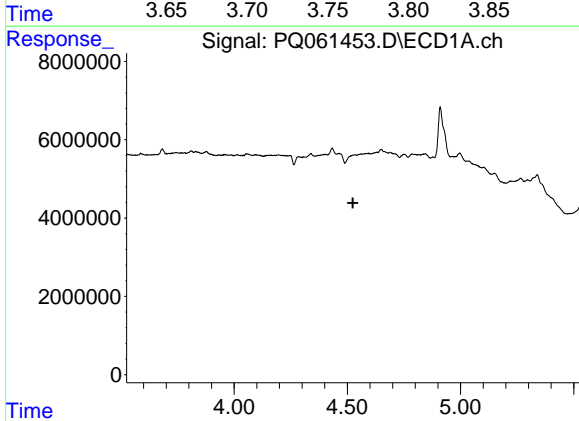
R.T.: 4.534 min
 Delta R.T.: 0.029 min
 Response: -1731641
 Conc: N.D.

Instrument :
 ECD_Q
 ClientSampleId :



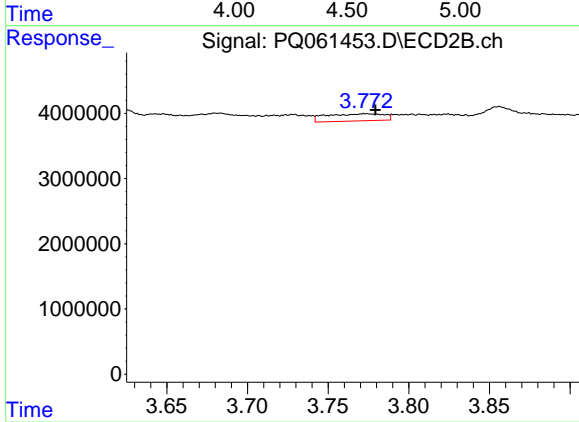
#3 AR-1016-1

R.T.: 3.773 min
 Delta R.T.: 0.009 min
 Response: 2725701
 Conc: 26.43 ng/ml



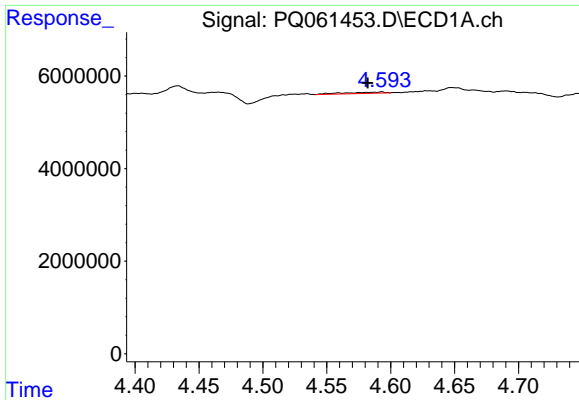
#4 AR-1016-2

R.T.: 4.534 min
 Delta R.T.: 0.010 min
 Response: -1731641
 Conc: N.D.



#4 AR-1016-2

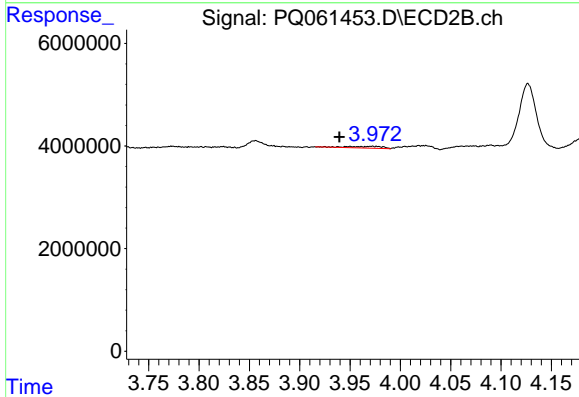
R.T.: 3.773 min
 Delta R.T.: -0.006 min
 Response: 2725701
 Conc: 18.30 ng/ml



#5 AR-1016-3

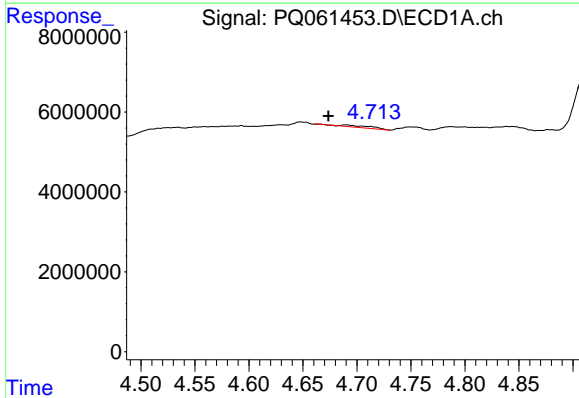
R.T.: 4.593 min
 Delta R.T.: 0.011 min
 Response: 604129
 Conc: 4.25 ng/ml

Instrument :
 ECD_Q
 ClientSampleId :



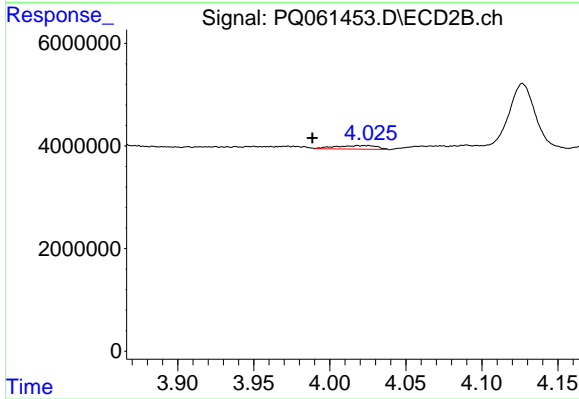
#5 AR-1016-3

R.T.: 3.950 min
 Delta R.T.: 0.011 min
 Response: 803625
 Conc: 10.17 ng/ml



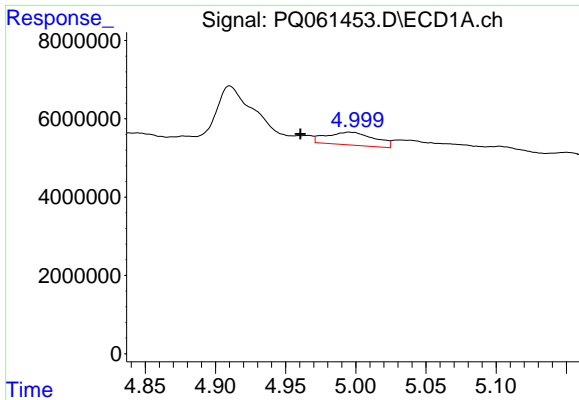
#6 AR-1016-4

R.T.: 4.690 min
 Delta R.T.: 0.017 min
 Response: 987128
 Conc: 8.57 ng/ml



#6 AR-1016-4

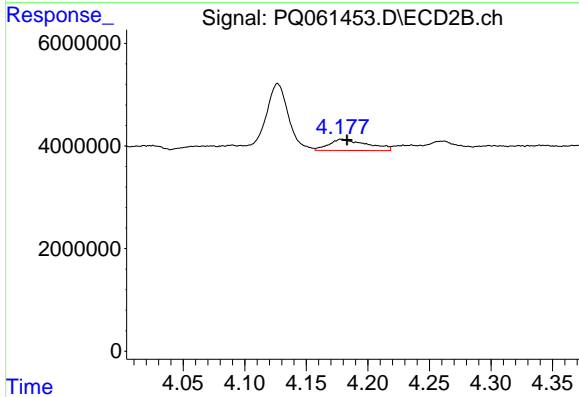
R.T.: 4.025 min
 Delta R.T.: 0.036 min
 Response: 1292043
 Conc: 18.20 ng/ml



#7 AR-1016-5

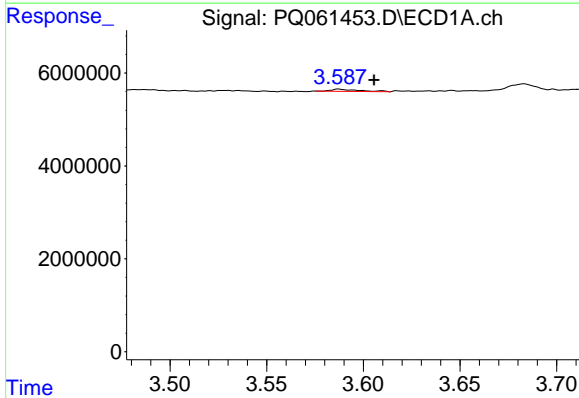
R.T.: 4.995 min
 Delta R.T.: 0.035 min
 Response: 7792647
 Conc: 67.43 ng/ml

Instrument :
 ECD_Q
 ClientSampleId :



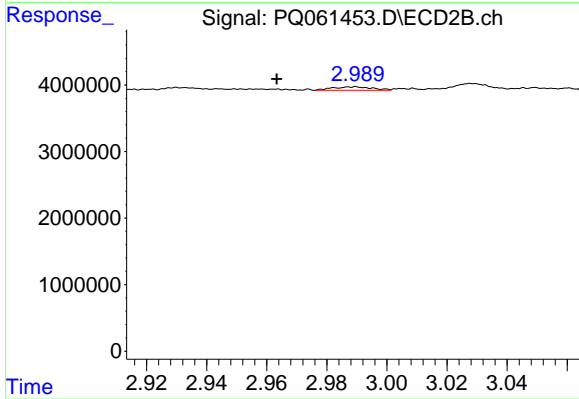
#7 AR-1016-5

R.T.: 4.178 min
 Delta R.T.: -0.005 min
 Response: 4757609
 Conc: 55.57 ng/ml



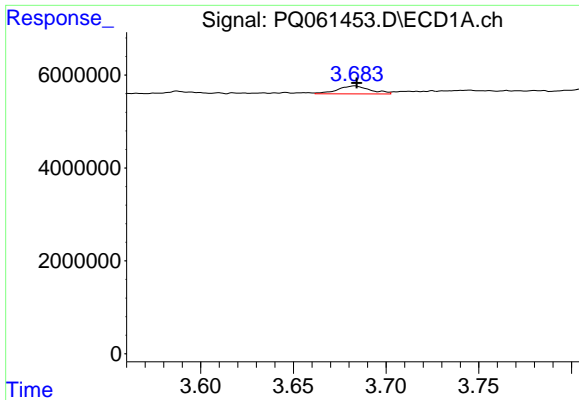
#8 AR-1221-1

R.T.: 3.587 min
 Delta R.T.: -0.018 min
 Response: 440957
 Conc: 7.86 ng/ml



#8 AR-1221-1

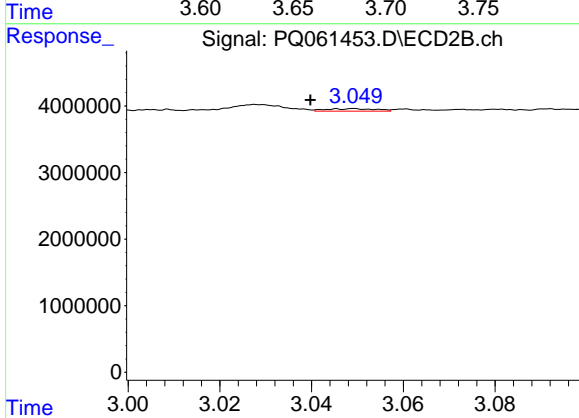
R.T.: 2.990 min
 Delta R.T.: 0.026 min
 Response: 469967
 Conc: 13.20 ng/ml



#9 AR-1221-2

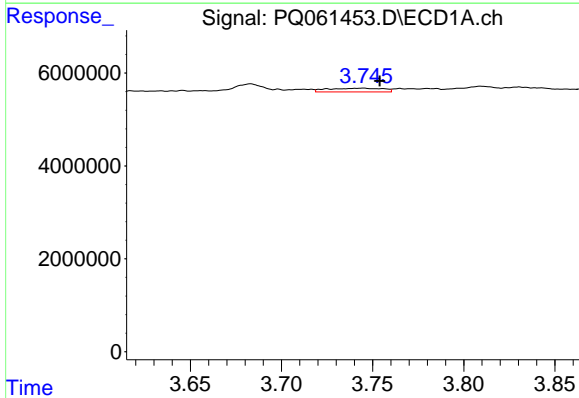
R.T.: 3.683 min
 Delta R.T.: -0.001 min
 Response: 2104818
 Conc: 49.88 ng/ml

Instrument :
 ECD_Q
 ClientSampleId :



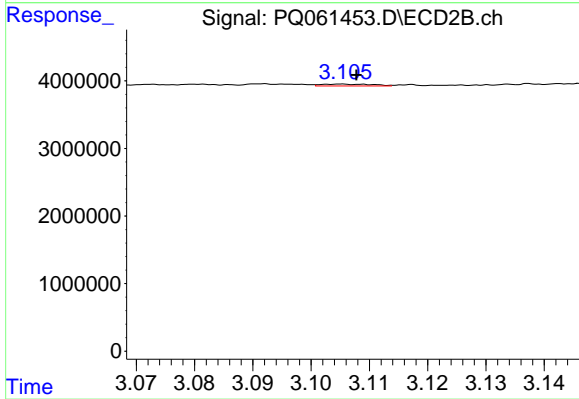
#9 AR-1221-2

R.T.: 3.049 min
 Delta R.T.: 0.010 min
 Response: 273479
 Conc: 9.93 ng/ml



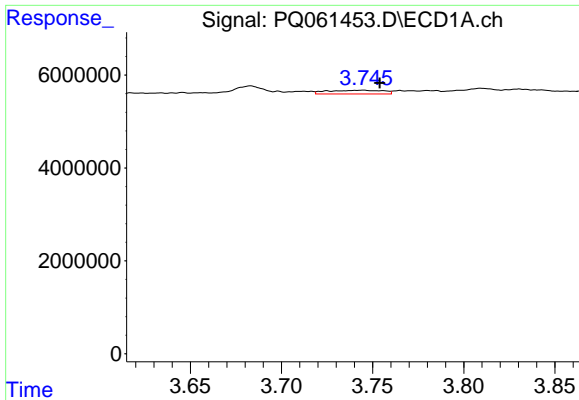
#10 AR-1221-3

R.T.: 3.745 min
 Delta R.T.: -0.009 min
 Response: 1691777
 Conc: 12.91 ng/ml



#10 AR-1221-3

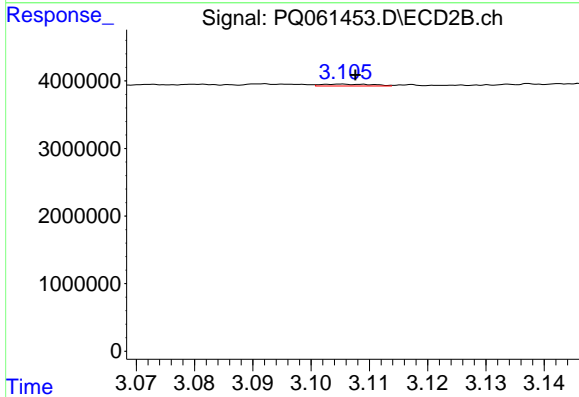
R.T.: 3.105 min
 Delta R.T.: -0.002 min
 Response: 159987
 Conc: 1.89 ng/ml



#11 AR-1232-1

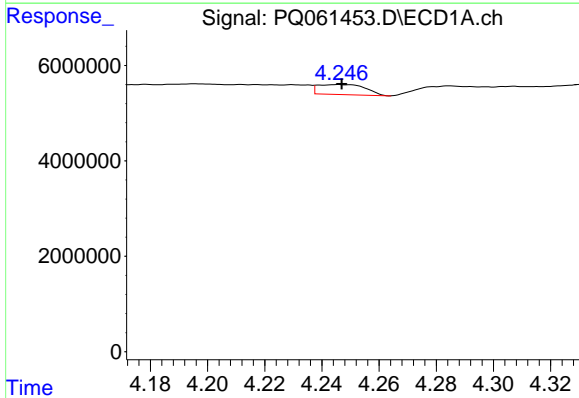
R.T.: 3.745 min
 Delta R.T.: -0.009 min
 Response: 1691777
 Conc: 17.70 ng/ml

Instrument :
 ECD_Q
 ClientSampleId :



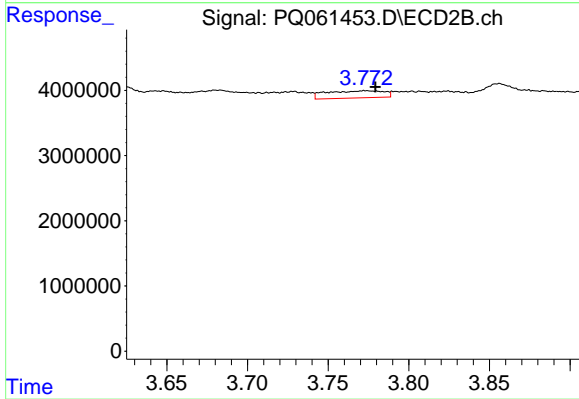
#11 AR-1232-1

R.T.: 3.105 min
 Delta R.T.: -0.002 min
 Response: 159987
 Conc: 2.60 ng/ml



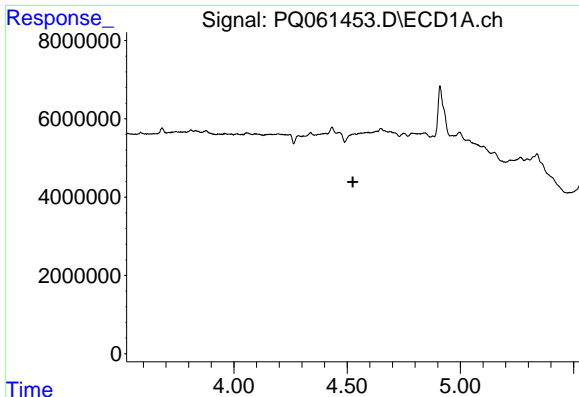
#12 AR-1232-2

R.T.: 4.246 min
 Delta R.T.: -0.001 min
 Response: 2393343
 Conc: 43.57 ng/ml



#12 AR-1232-2

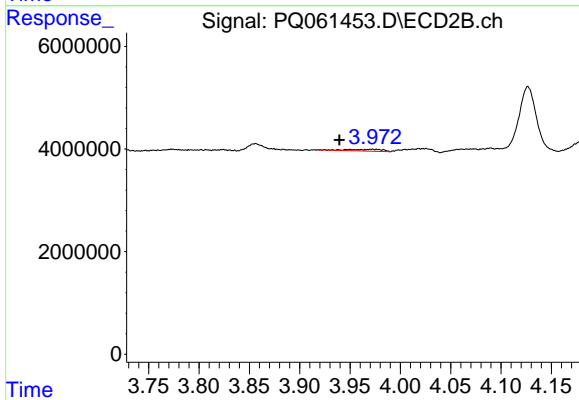
R.T.: 3.773 min
 Delta R.T.: -0.006 min
 Response: 2725701
 Conc: 39.56 ng/ml



#13 AR-1232-3

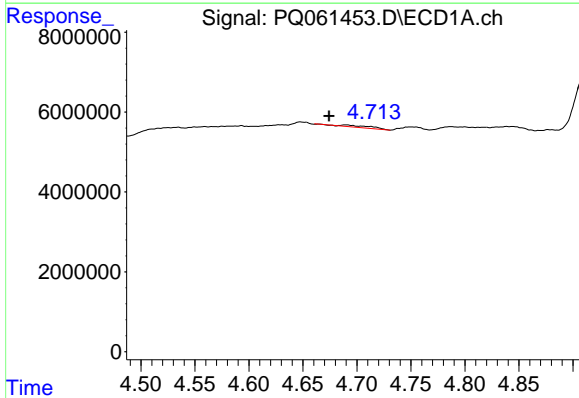
R.T.: 4.534 min
 Delta R.T.: 0.009 min
 Response: -1731641
 Conc: N.D.

Instrument :
 ECD_Q
 ClientSampleId :



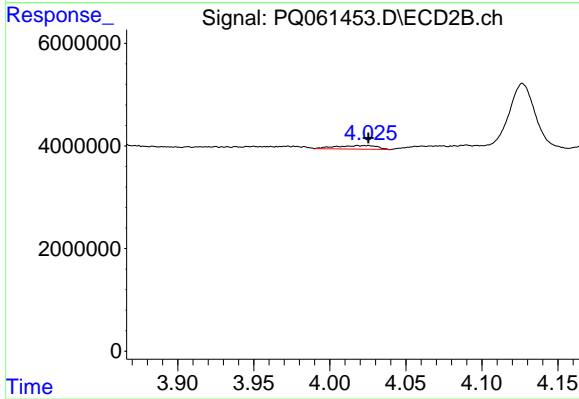
#13 AR-1232-3

R.T.: 3.950 min
 Delta R.T.: 0.011 min
 Response: 803625
 Conc: 22.22 ng/ml



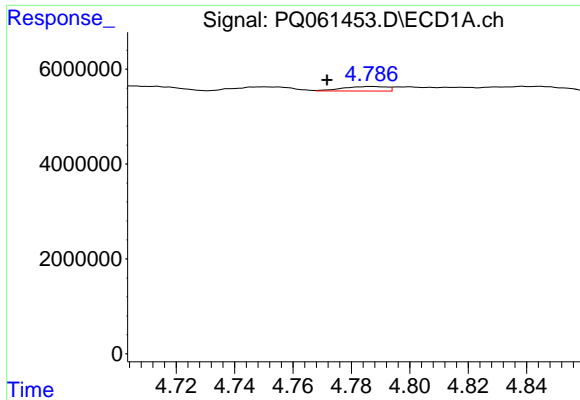
#14 AR-1232-4

R.T.: 4.690 min
 Delta R.T.: 0.016 min
 Response: 987128
 Conc: 18.60 ng/ml



#14 AR-1232-4

R.T.: 4.025 min
 Delta R.T.: 0.000 min
 Response: 1292043
 Conc: 40.09 ng/ml

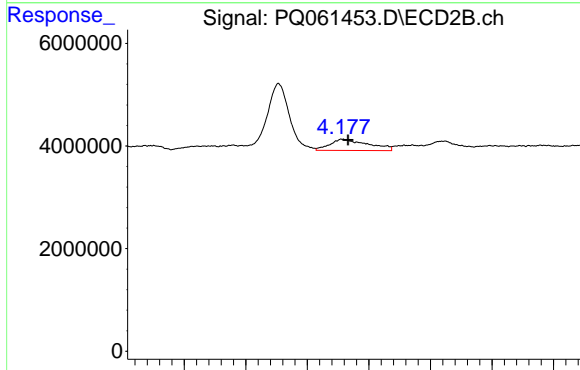


#15 AR-1232-5

R.T.: 4.787 min
 Delta R.T.: 0.015 min
 Response: 1015091
 Conc: 26.92 ng/ml

Instrument :
 ECD_Q
 ClientSampleId :

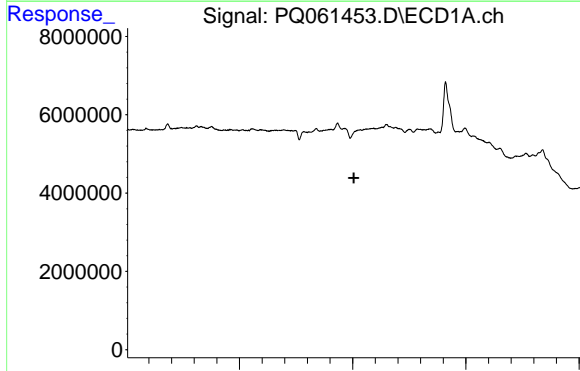
Time 4.72 4.74 4.76 4.78 4.80 4.82 4.84



#15 AR-1232-5

R.T.: 4.178 min
 Delta R.T.: -0.005 min
 Response: 4757609
 Conc: 124.14 ng/ml

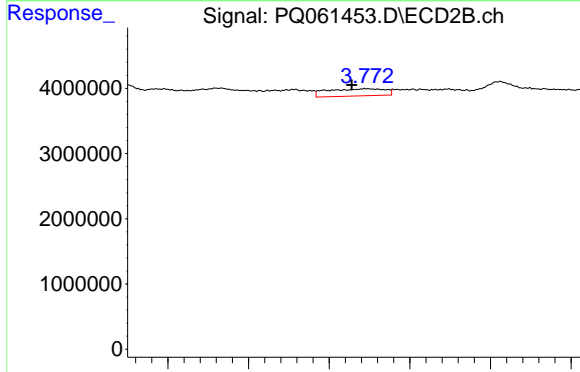
Time 4.05 4.10 4.15 4.20 4.25 4.30 4.35



#16 AR-1242-1

R.T.: 4.534 min
 Delta R.T.: 0.029 min
 Response: -1731641
 Conc: N.D.

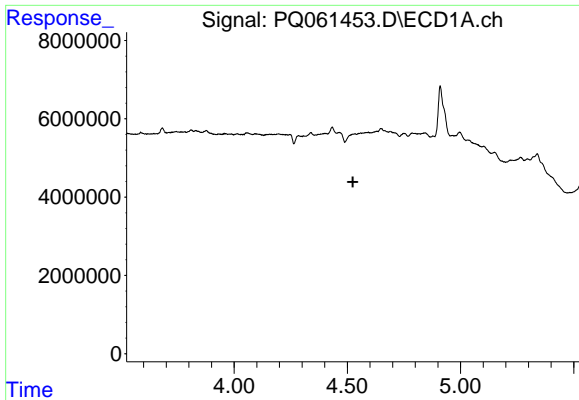
Time 4.00 4.50 5.00



#16 AR-1242-1

R.T.: 3.773 min
 Delta R.T.: 0.009 min
 Response: 2725701
 Conc: 35.59 ng/ml

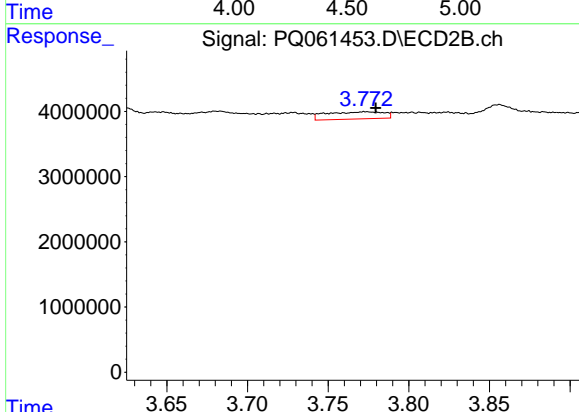
Time 3.65 3.70 3.75 3.80 3.85



#17 AR-1242-2

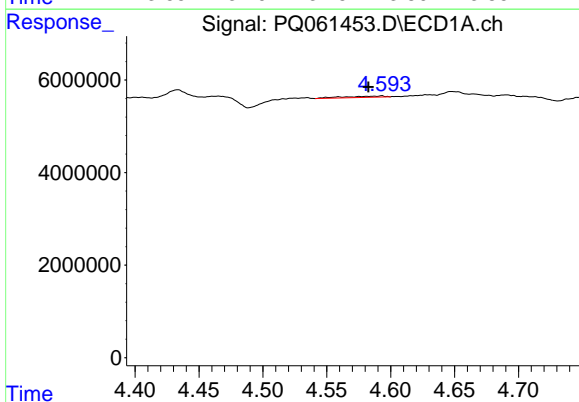
R.T.: 4.534 min
 Delta R.T.: 0.010 min
 Response: -1731641
 Conc: N.D.

Instrument :
 ECD_Q
 ClientSampleId :



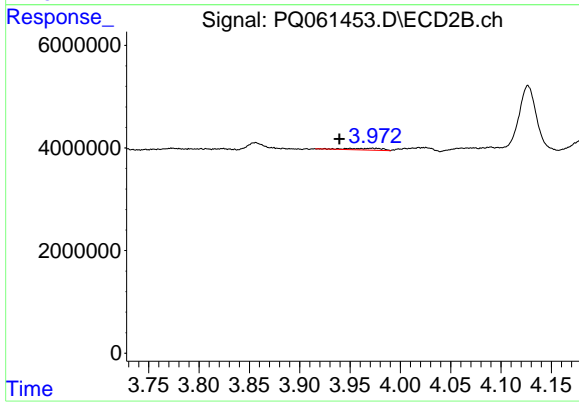
#17 AR-1242-2

R.T.: 3.773 min
 Delta R.T.: -0.006 min
 Response: 2725701
 Conc: 24.59 ng/ml



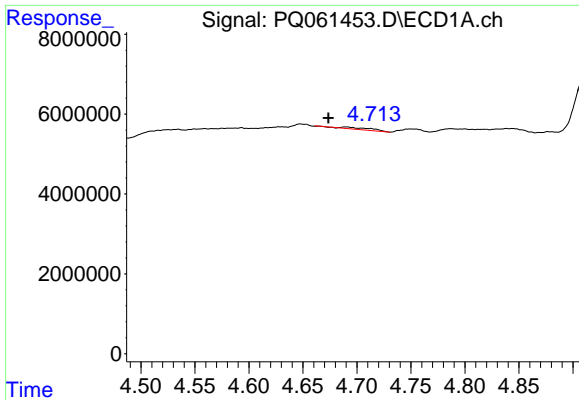
#18 AR-1242-3

R.T.: 4.593 min
 Delta R.T.: 0.011 min
 Response: 604129
 Conc: 5.65 ng/ml



#18 AR-1242-3

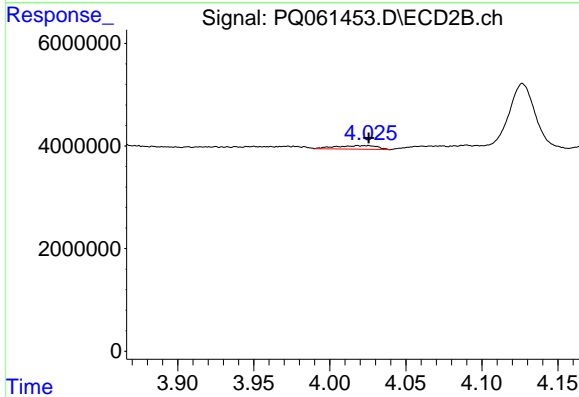
R.T.: 3.950 min
 Delta R.T.: 0.011 min
 Response: 803625
 Conc: 13.58 ng/ml



#19 AR-1242-4

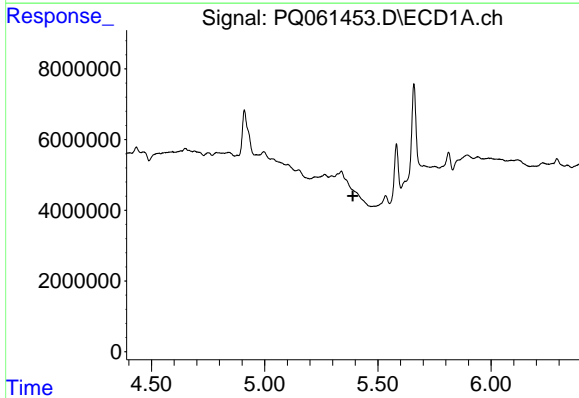
R.T.: 4.690 min
 Delta R.T.: 0.016 min
 Response: 987128
 Conc: 11.37 ng/ml

Instrument :
 ECD_Q
 ClientSampleId :



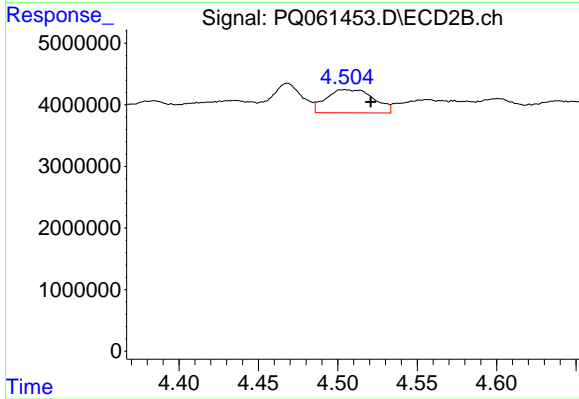
#19 AR-1242-4

R.T.: 4.025 min
 Delta R.T.: 0.000 min
 Response: 1292043
 Conc: 21.58 ng/ml



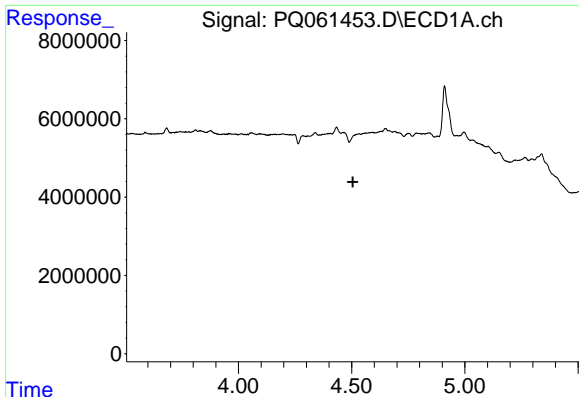
#20 AR-1242-5

R.T.: 0.000 min
 Exp R.T. : 5.390 min
 Response: 0
 Conc: N.D.



#20 AR-1242-5

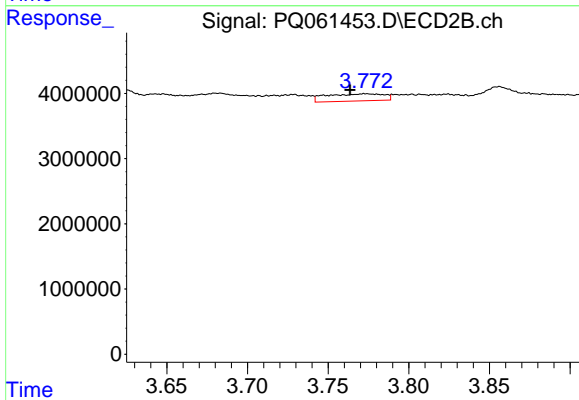
R.T.: 4.504 min
 Delta R.T.: -0.017 min
 Response: 7884110
 Conc: 98.47 ng/ml



#21 AR-1248-1

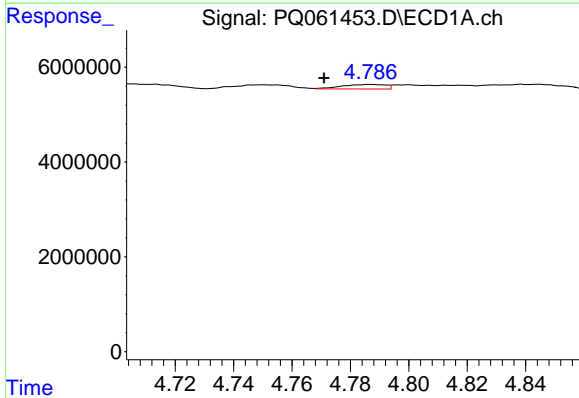
R.T.: 4.534 min
 Delta R.T.: 0.029 min
 Response: -1731641
 Conc: N.D.

Instrument :
 ECD_Q
 ClientSampleId :



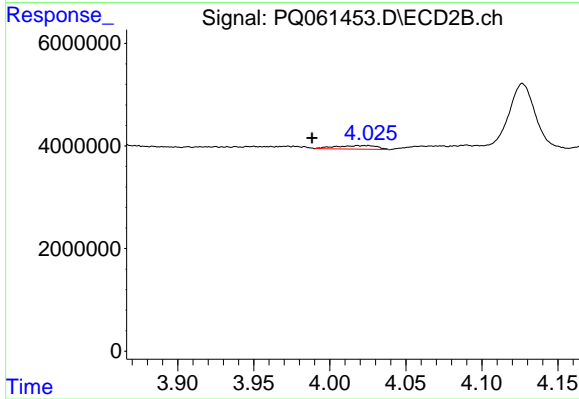
#21 AR-1248-1

R.T.: 3.773 min
 Delta R.T.: 0.009 min
 Response: 2725701
 Conc: 43.80 ng/ml



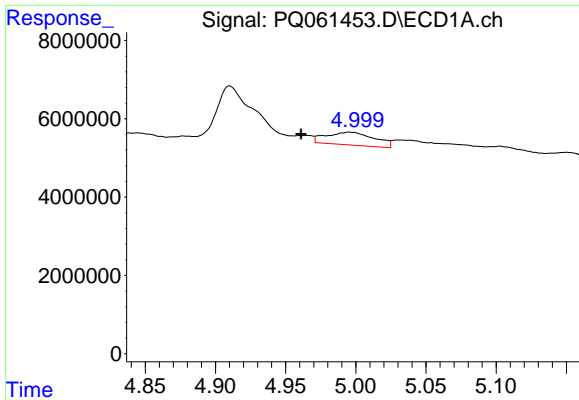
#22 AR-1248-2

R.T.: 4.787 min
 Delta R.T.: 0.016 min
 Response: 1015091
 Conc: 7.98 ng/ml



#22 AR-1248-2

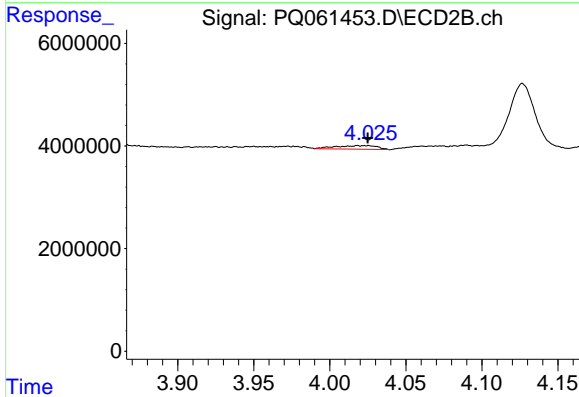
R.T.: 4.025 min
 Delta R.T.: 0.037 min
 Response: 1292043
 Conc: 13.37 ng/ml



#23 AR-1248-3

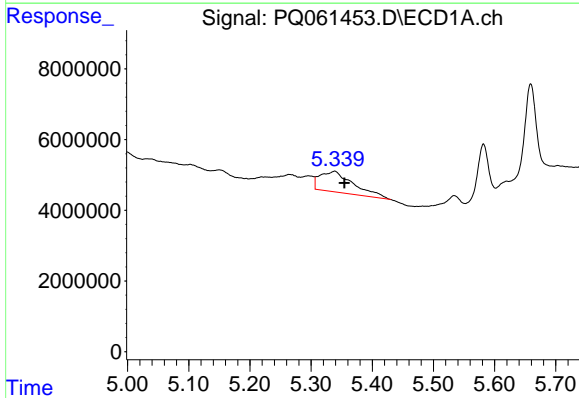
R.T.: 4.995 min
 Delta R.T.: 0.034 min
 Response: 7792647
 Conc: 50.59 ng/ml

Instrument :
 ECD_Q
 ClientSampleId :



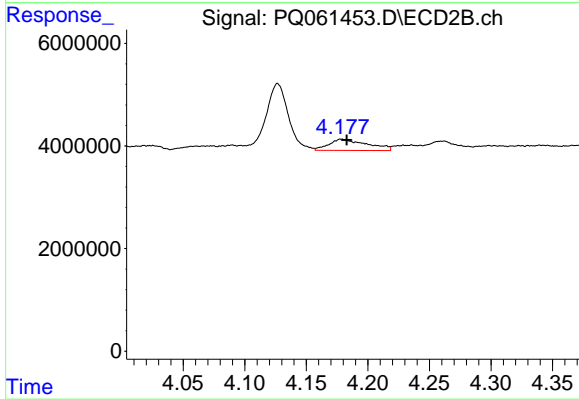
#23 AR-1248-3

R.T.: 4.025 min
 Delta R.T.: 0.000 min
 Response: 1292043
 Conc: 14.13 ng/ml



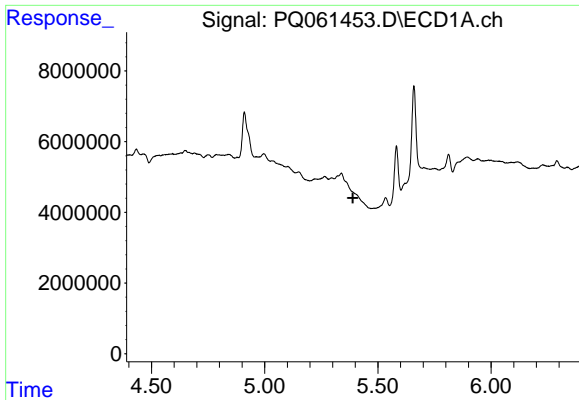
#24 AR-1248-4

R.T.: 5.339 min
 Delta R.T.: -0.016 min
 Response: 21817806
 Conc: 128.53 ng/ml



#24 AR-1248-4

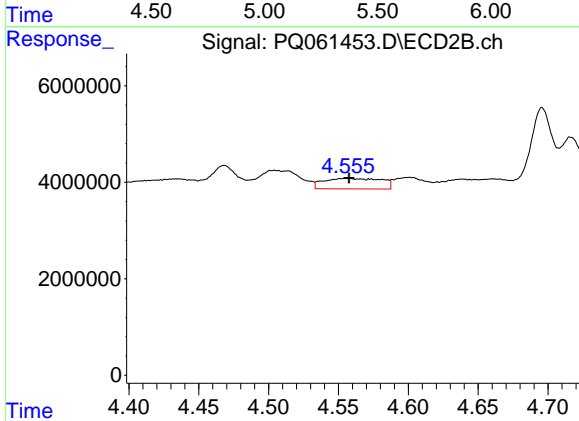
R.T.: 4.178 min
 Delta R.T.: -0.004 min
 Response: 4757609
 Conc: 42.02 ng/ml



#25 AR-1248-5

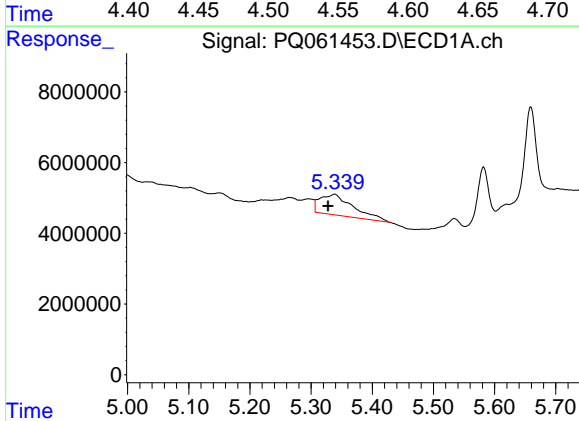
R.T.: 0.000 min
 Exp R.T.: 5.389 min
 Response: 0
 Conc: N.D.

Instrument :
 ECD_Q
 ClientSampleId :



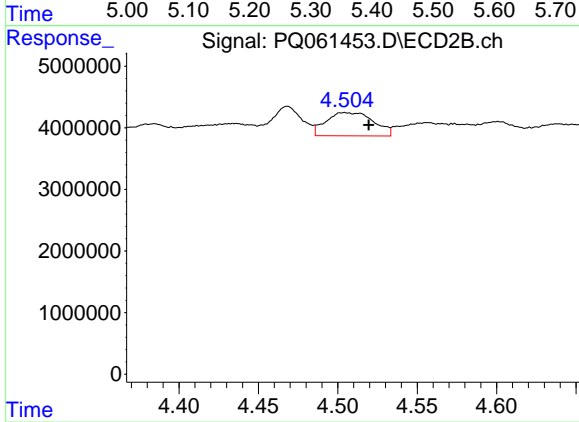
#25 AR-1248-5

R.T.: 4.557 min
 Delta R.T.: 0.000 min
 Response: 6273414
 Conc: 56.96 ng/ml



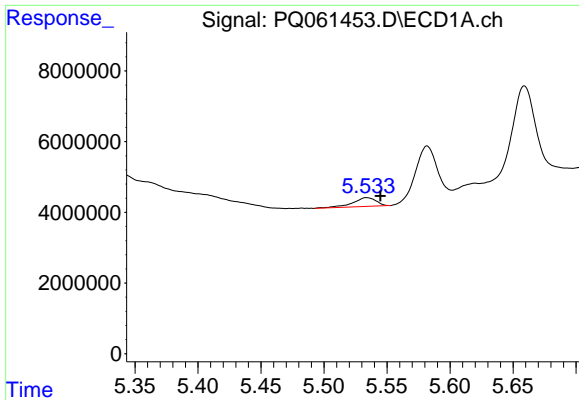
#26 AR-1254-1

R.T.: 5.339 min
 Delta R.T.: 0.011 min
 Response: 21817806
 Conc: 127.74 ng/ml



#26 AR-1254-1

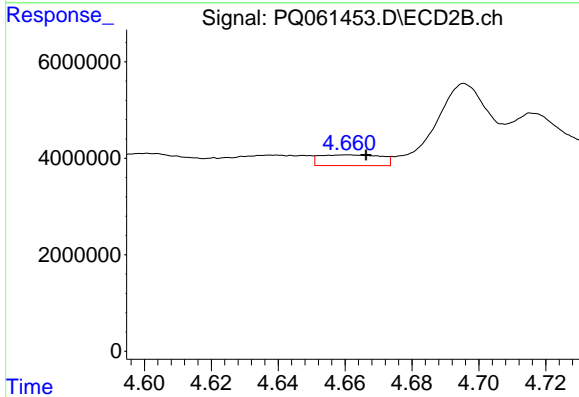
R.T.: 4.504 min
 Delta R.T.: -0.016 min
 Response: 7884110
 Conc: 47.94 ng/ml



#27 AR-1254-2

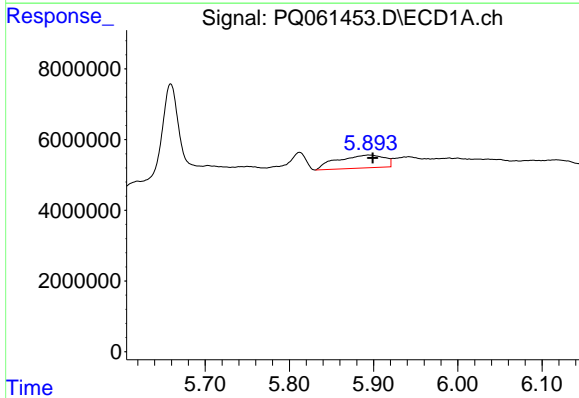
R.T.: 5.534 min
 Delta R.T.: -0.011 min
 Response: 3214827
 Conc: 12.02 ng/ml

Instrument :
 ECD_Q
 ClientSampleId :



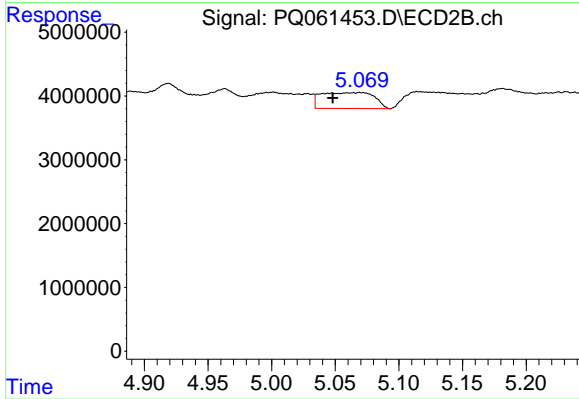
#27 AR-1254-2

R.T.: 4.661 min
 Delta R.T.: -0.005 min
 Response: 2838455
 Conc: 18.87 ng/ml



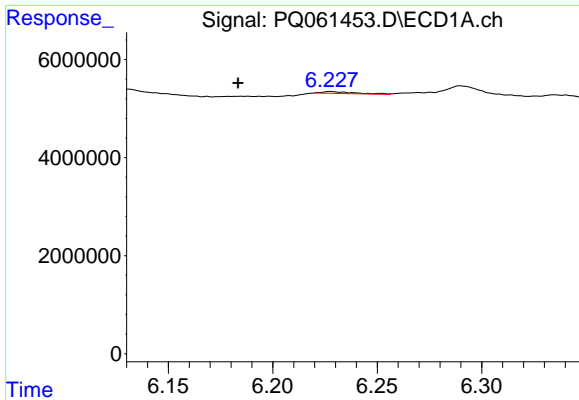
#28 AR-1254-3

R.T.: 5.894 min
 Delta R.T.: -0.005 min
 Response: 14359376
 Conc: 51.39 ng/ml



#28 AR-1254-3

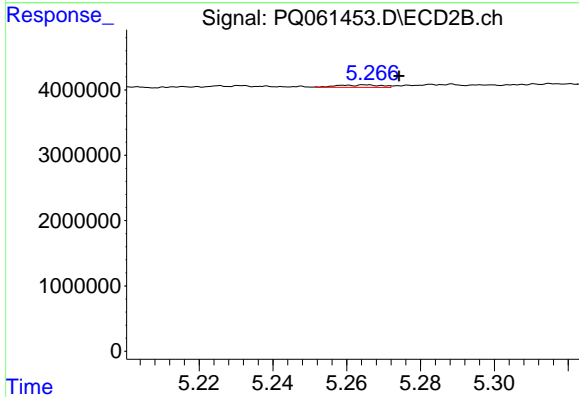
R.T.: 5.070 min
 Delta R.T.: 0.021 min
 Response: 7235303
 Conc: 31.09 ng/ml



#29 AR-1254-4

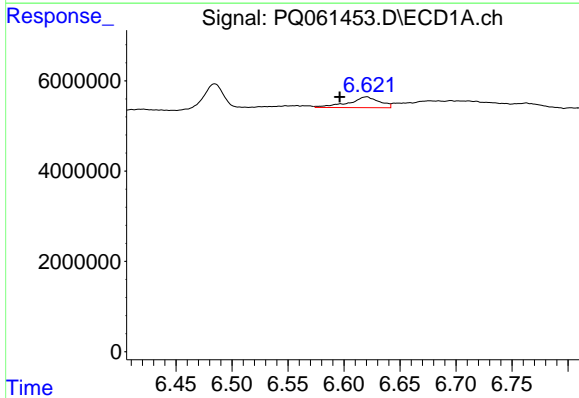
R.T.: 6.228 min
 Delta R.T.: 0.044 min
 Response: 418011
 Conc: 2.04 ng/ml

Instrument :
 ECD_Q
 ClientSampleId :



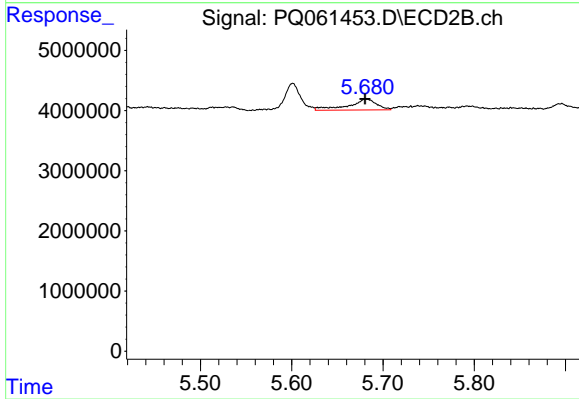
#29 AR-1254-4

R.T.: 5.265 min
 Delta R.T.: -0.009 min
 Response: 300287
 Conc: 2.09 ng/ml



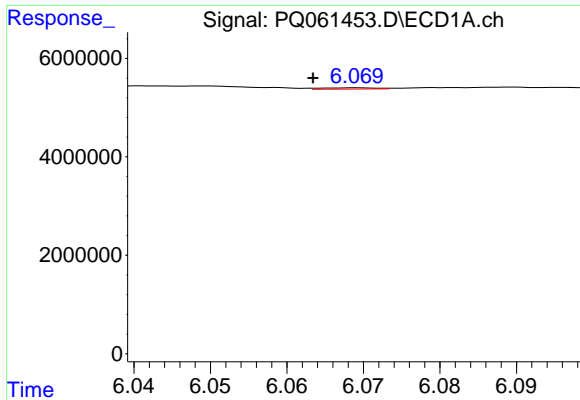
#30 AR-1254-5

R.T.: 6.620 min
 Delta R.T.: 0.024 min
 Response: 4604584
 Conc: 19.52 ng/ml



#30 AR-1254-5

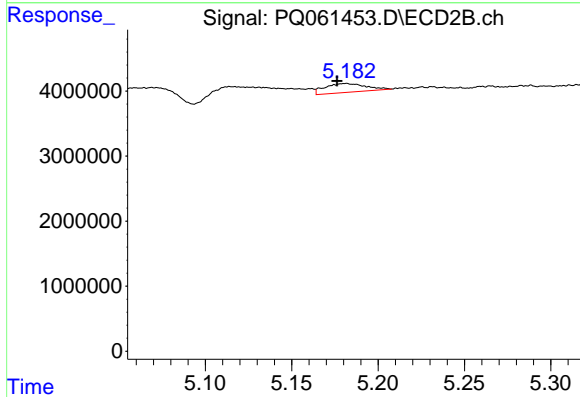
R.T.: 5.681 min
 Delta R.T.: 0.000 min
 Response: 3856849
 Conc: 16.91 ng/ml



#31 AR-1260-1

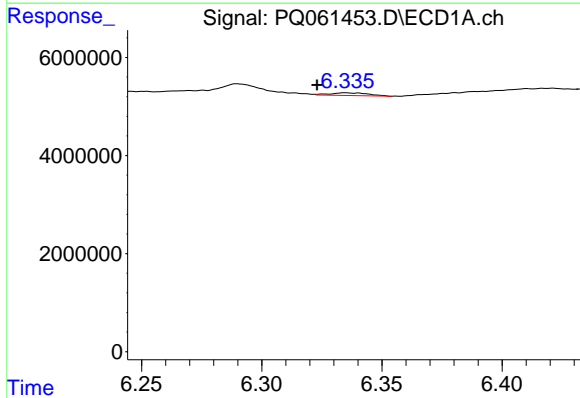
R.T.: 6.069 min
 Delta R.T.: 0.006 min
 Response: 138100
 Conc: 0.62 ng/ml

Instrument :
 ECD_Q
 ClientSampleId :



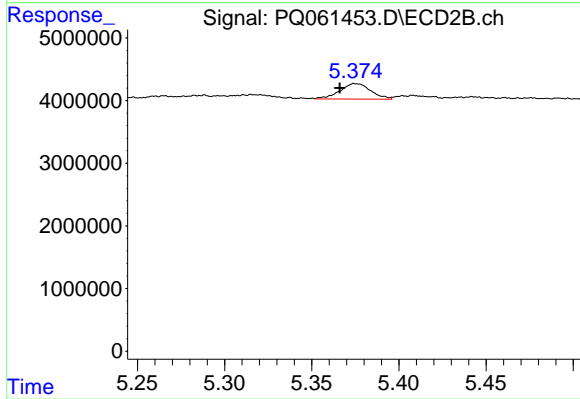
#31 AR-1260-1

R.T.: 5.181 min
 Delta R.T.: 0.005 min
 Response: 2253015
 Conc: 13.10 ng/ml



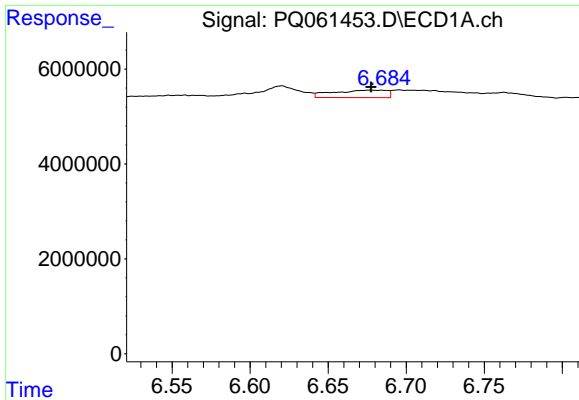
#32 AR-1260-2

R.T.: 6.335 min
 Delta R.T.: 0.012 min
 Response: 630575
 Conc: 2.37 ng/ml



#32 AR-1260-2

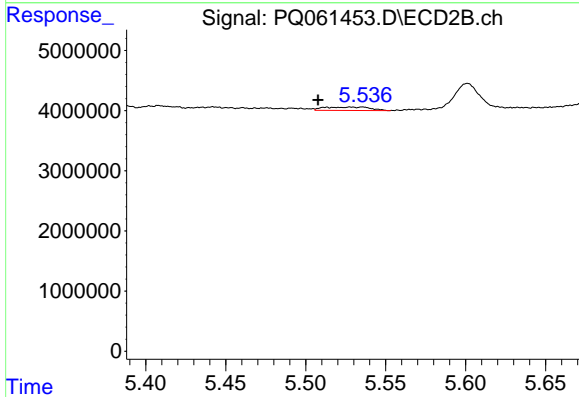
R.T.: 5.375 min
 Delta R.T.: 0.009 min
 Response: 3064803
 Conc: 14.79 ng/ml



#33 AR-1260-3

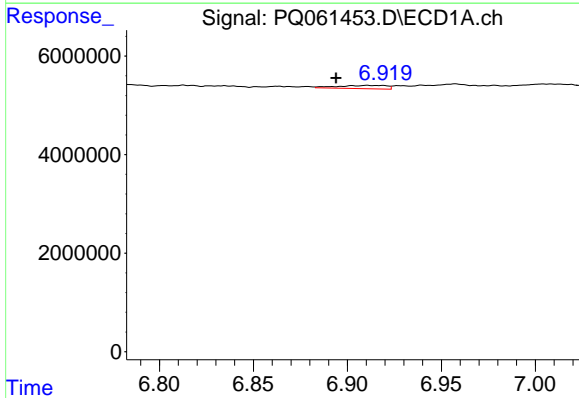
R.T.: 6.677 min
 Delta R.T.: 0.000 min
 Response: 3786926
 Conc: 22.52 ng/ml

Instrument :
 ECD_Q
 ClientSampleId :



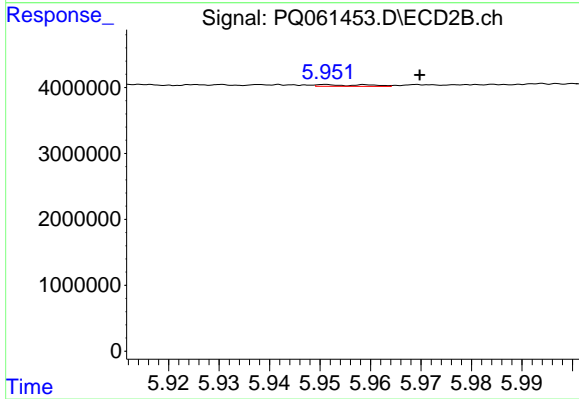
#33 AR-1260-3

R.T.: 5.528 min
 Delta R.T.: 0.020 min
 Response: 1122401
 Conc: 5.65 ng/ml



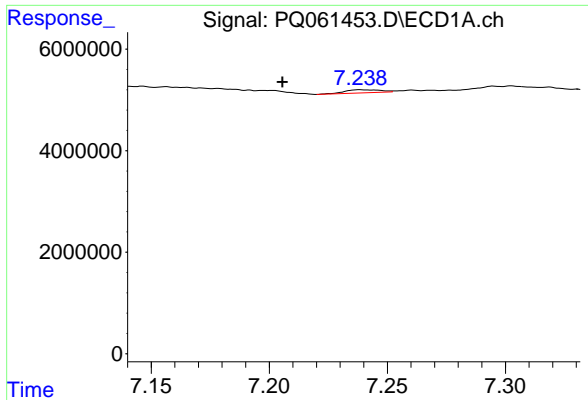
#34 AR-1260-4

R.T.: 6.911 min
 Delta R.T.: 0.016 min
 Response: 1205798
 Conc: 6.01 ng/ml



#34 AR-1260-4

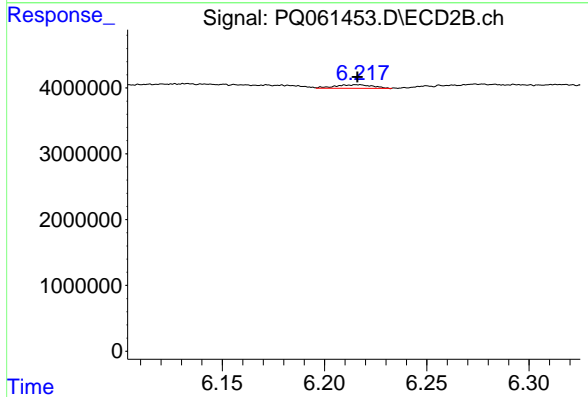
R.T.: 5.951 min
 Delta R.T.: -0.019 min
 Response: 167095
 Conc: 1.14 ng/ml



#35 AR-1260-5

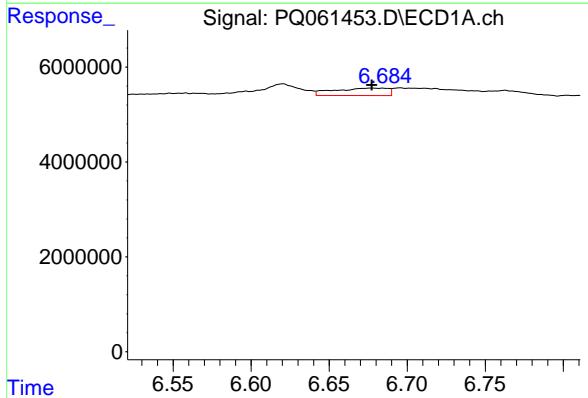
R.T.: 7.238 min
 Delta R.T.: 0.033 min
 Response: 635454
 Conc: 1.67 ng/ml

Instrument :
 ECD_Q
 ClientSampleId :



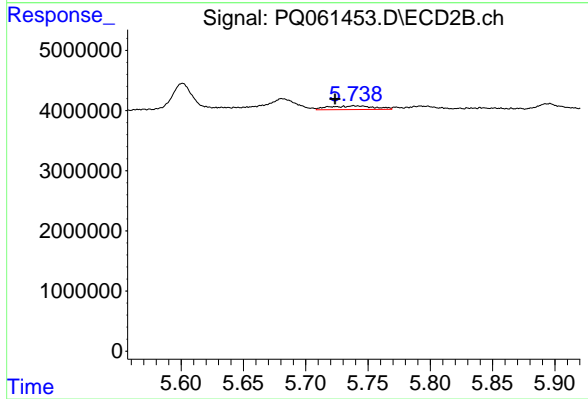
#35 AR-1260-5

R.T.: 6.217 min
 Delta R.T.: 0.000 min
 Response: 704358
 Conc: 2.17 ng/ml



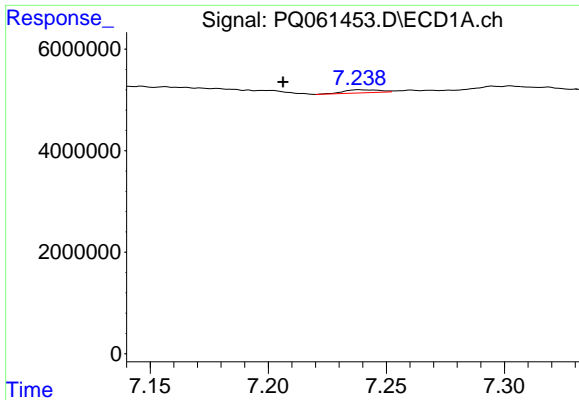
#36 AR-1262-1

R.T.: 6.677 min
 Delta R.T.: 0.000 min
 Response: 3786926
 Conc: 12.65 ng/ml



#36 AR-1262-1

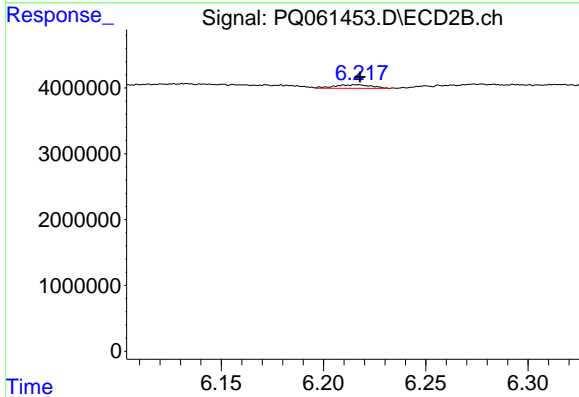
R.T.: 5.739 min
 Delta R.T.: 0.015 min
 Response: 1554773
 Conc: 6.42 ng/ml



#37 AR-1262-2

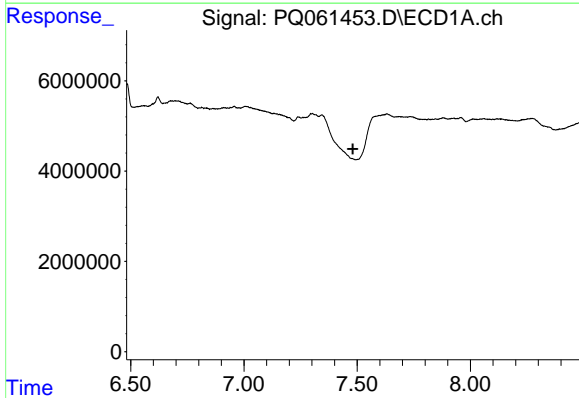
R.T.: 7.238 min
 Delta R.T.: 0.032 min
 Response: 635454
 Conc: 1.26 ng/ml

Instrument :
 ECD_Q
 ClientSampleId :



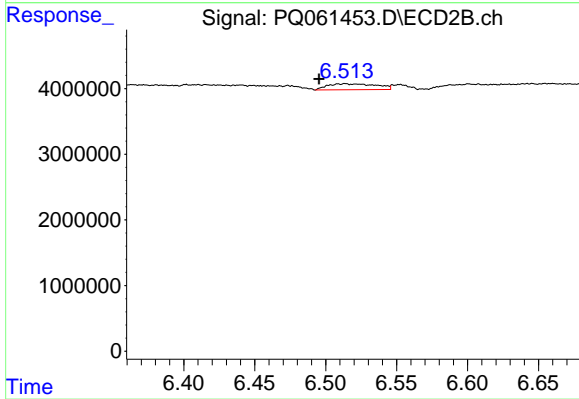
#37 AR-1262-2

R.T.: 6.217 min
 Delta R.T.: -0.001 min
 Response: 704358
 Conc: 1.61 ng/ml



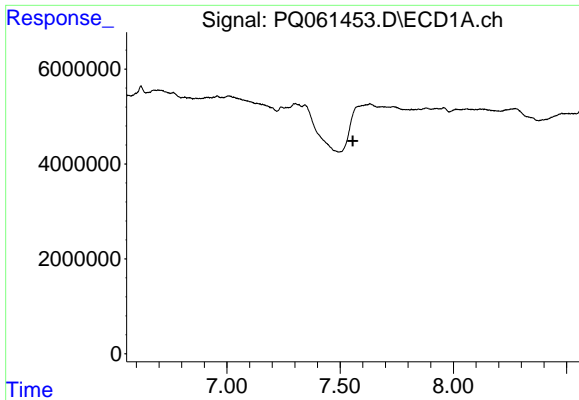
#38 AR-1262-3

R.T.: 0.000 min
 Exp R.T. : 7.482 min
 Response: 0
 Conc: N.D.



#38 AR-1262-3

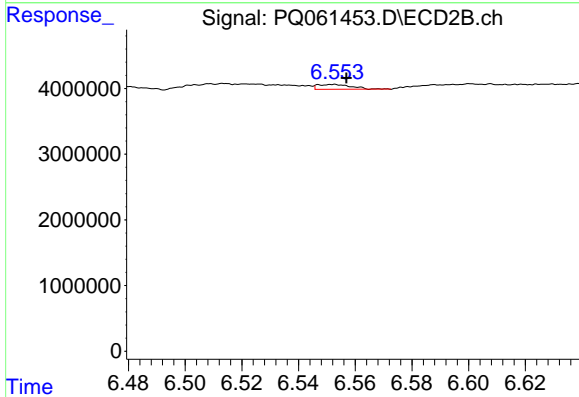
R.T.: 6.514 min
 Delta R.T.: 0.019 min
 Response: 2158394
 Conc: 11.98 ng/ml



#39 AR-1262-4

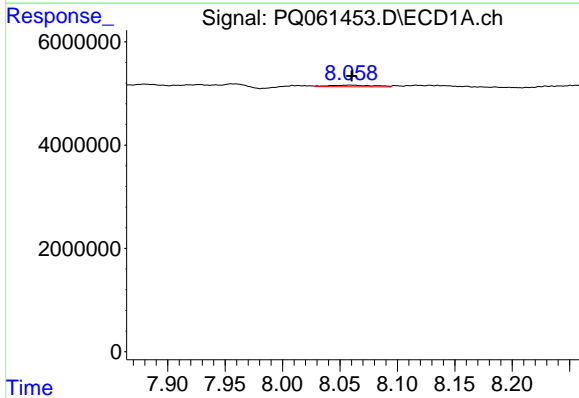
R.T.: 0.000 min
 Exp R.T.: 7.556 min
 Response: 0
 Conc: N.D.

Instrument :
 ECD_Q
 ClientSampleId :



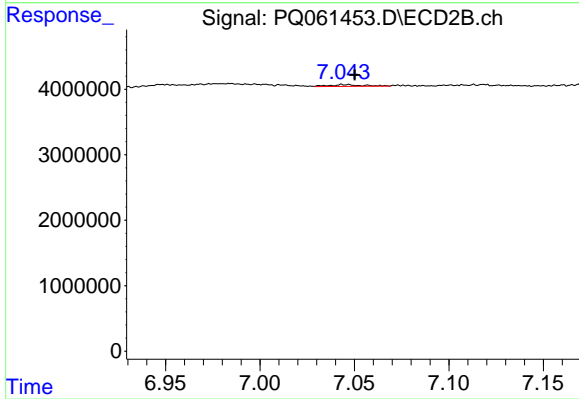
#39 AR-1262-4

R.T.: 6.552 min
 Delta R.T.: -0.005 min
 Response: 601782
 Conc: 1.81 ng/ml



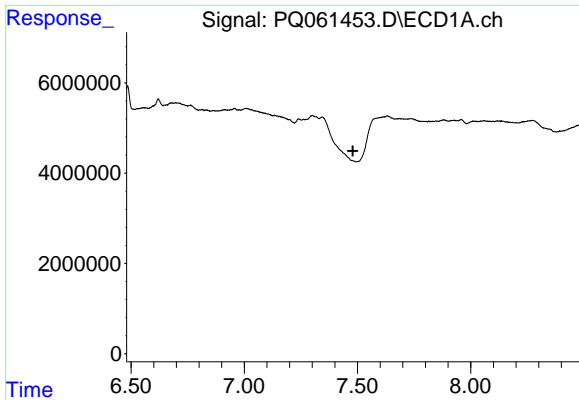
#40 AR-1262-5

R.T.: 8.059 min
 Delta R.T.: -0.001 min
 Response: 851258
 Conc: 5.00 ng/ml



#40 AR-1262-5

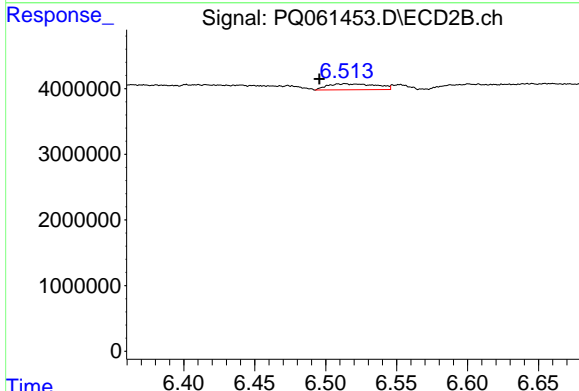
R.T.: 7.045 min
 Delta R.T.: -0.005 min
 Response: 341127
 Conc: 2.13 ng/ml



#41 AR-1268-1

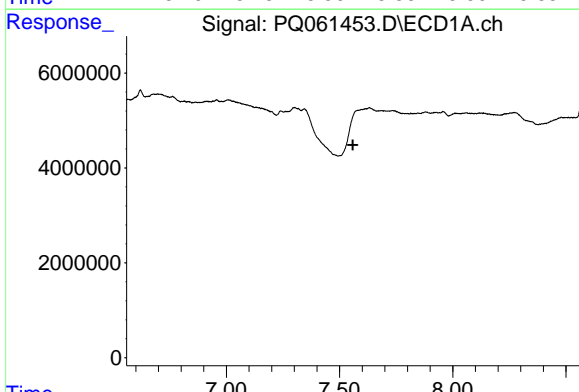
R.T.: 0.000 min
 Exp R.T.: 7.479 min
 Response: 0
 Conc: N.D.

Instrument :
 ECD_Q
 ClientSampleId :



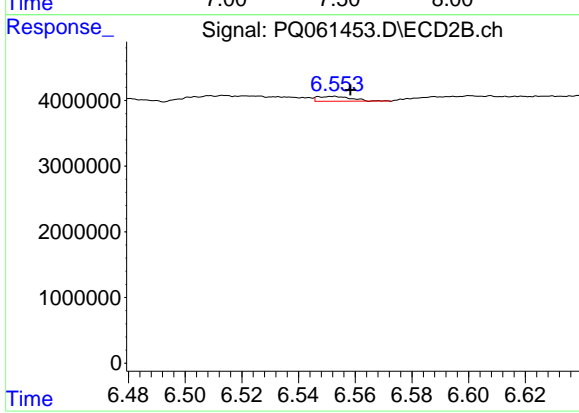
#41 AR-1268-1

R.T.: 6.514 min
 Delta R.T.: 0.018 min
 Response: 2158394
 Conc: 4.39 ng/ml



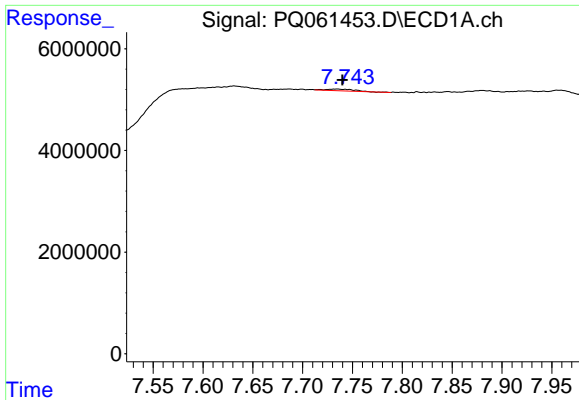
#42 AR-1268-2

R.T.: 0.000 min
 Exp R.T.: 7.559 min
 Response: 0
 Conc: N.D.



#42 AR-1268-2

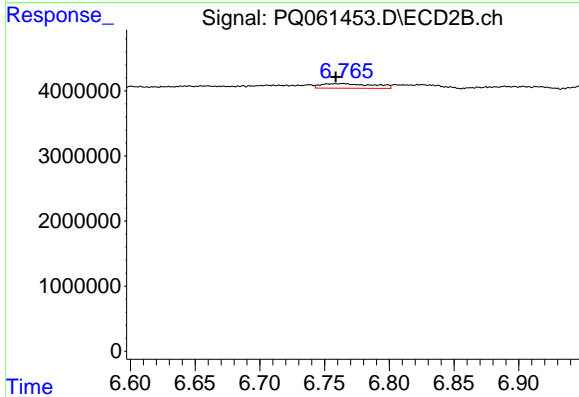
R.T.: 6.552 min
 Delta R.T.: -0.006 min
 Response: 601782
 Conc: 1.35 ng/ml



#43 AR-1268-3

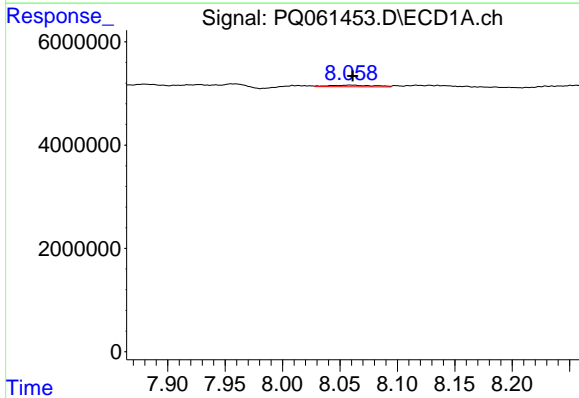
R.T.: 7.734 min
 Delta R.T.: -0.006 min
 Response: 661029
 Conc: 1.60 ng/ml

Instrument :
 ECD_Q
 ClientSampleId :



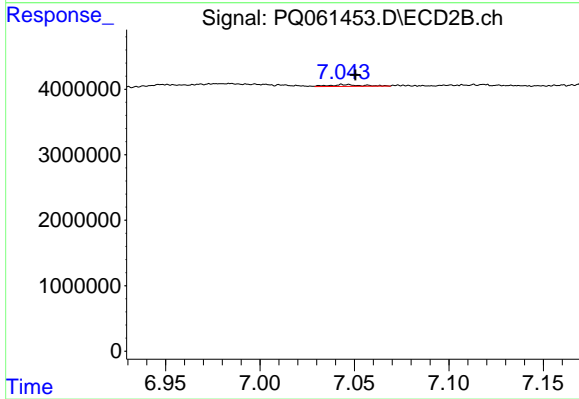
#43 AR-1268-3

R.T.: 6.764 min
 Delta R.T.: 0.006 min
 Response: 1955913
 Conc: 5.00 ng/ml



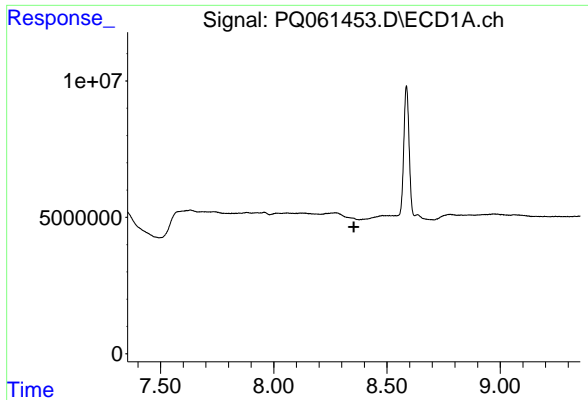
#44 AR-1268-4

R.T.: 8.059 min
 Delta R.T.: -0.002 min
 Response: 851258
 Conc: 4.81 ng/ml



#44 AR-1268-4

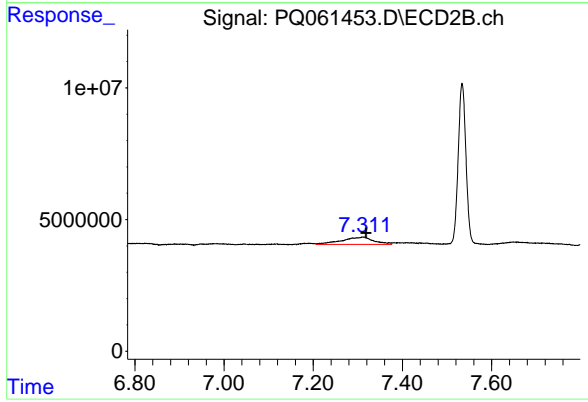
R.T.: 7.045 min
 Delta R.T.: -0.005 min
 Response: 341127
 Conc: 2.03 ng/ml



#45 AR-1268-5

R.T.: 0.000 min
 Exp R.T.: 8.354 min
 Response: 0
 Conc: N.D.

Instrument :
 ECD_Q
 ClientSampleId :



#45 AR-1268-5

R.T.: 7.311 min
 Delta R.T.: -0.008 min
 Response: 13780484
 Conc: 11.11 ng/ml