

Data Path : Z:\pestpcbsrv\HPCHEM1\ECD_Q\Data\PQ061523\
 Data File : PQ061475.D
 Signal(s) : Signal #1: ECD1A.ch Signal #2: ECD2B.ch
 Acq On : 15 Jun 2023 23:22
 Operator : YP\AJ
 Sample : I.BLK
 Misc :
 ALS Vial : 2 Sample Multiplier: 1

Instrument :
 ECD_Q
 ClientSampleId :
 I.BLK

Integration File signal 1: autoint1.e
 Integration File signal 2: autoint2.e
 Quant Time: Jun 16 05:32:35 2023
 Quant Method : Z:\pestpcbsrv\HPCHEM1\ECD_Q\Method\PQ060923.M
 Quant Title : GC EXTRACTABLES
 QLast Update : Fri Jun 09 18:19:31 2023
 Response via : Initial Calibration
 Integrator: ChemStation

Volume Inj. : 2 µl
 Signal #1 Phase : ZB-MR1 Signal #2 Phase: ZB-MR2
 Signal #1 Info : 30Mx0.32mmx 0.50µ Signal #2 Info : 30M x 0.32mm x 0.25µm

Compound	RT#1	RT#2	Resp#1	Resp#2	ng/ml	ng/ml

System Monitoring Compounds						
1) SA Tetrachlo...	3.405	2.761	91632733	50469033	20.385	18.900
2) SA Decachlor...	8.584	7.533	74714596	68274320	22.179	20.341

Target Compounds

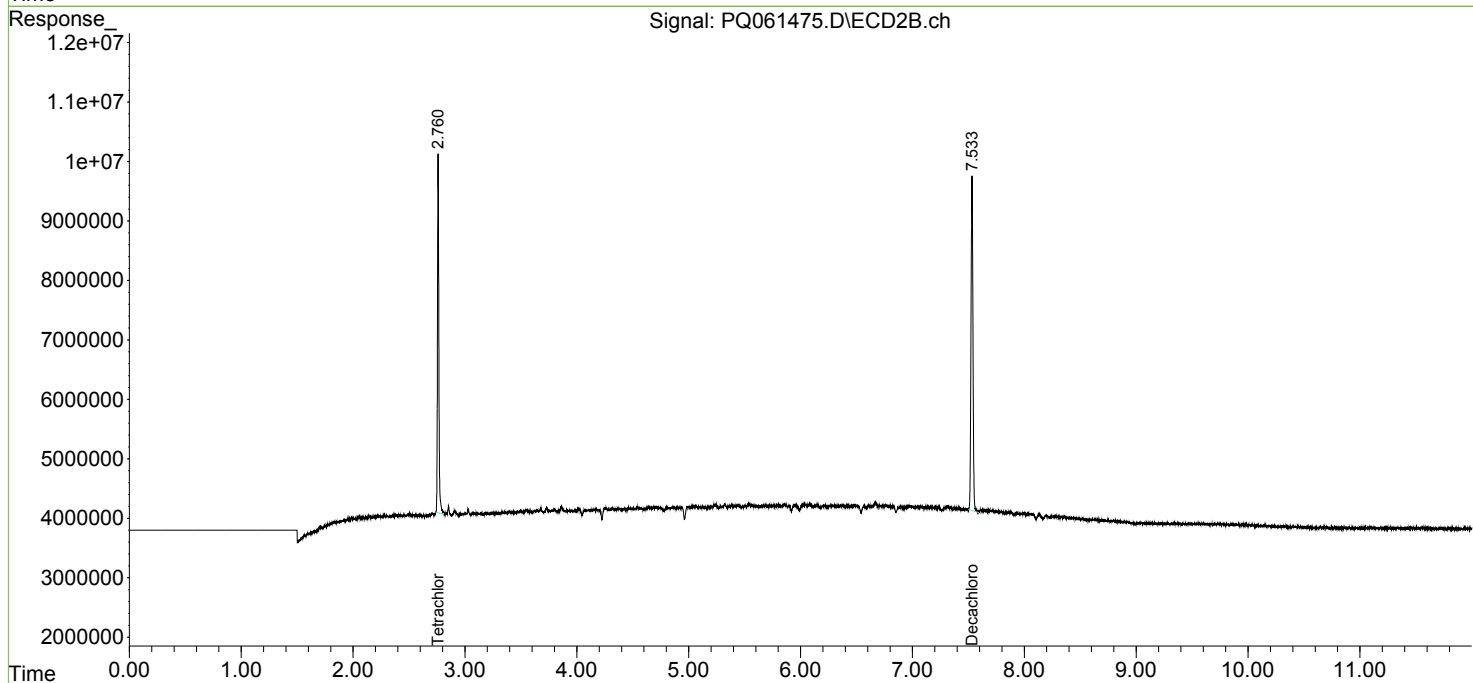
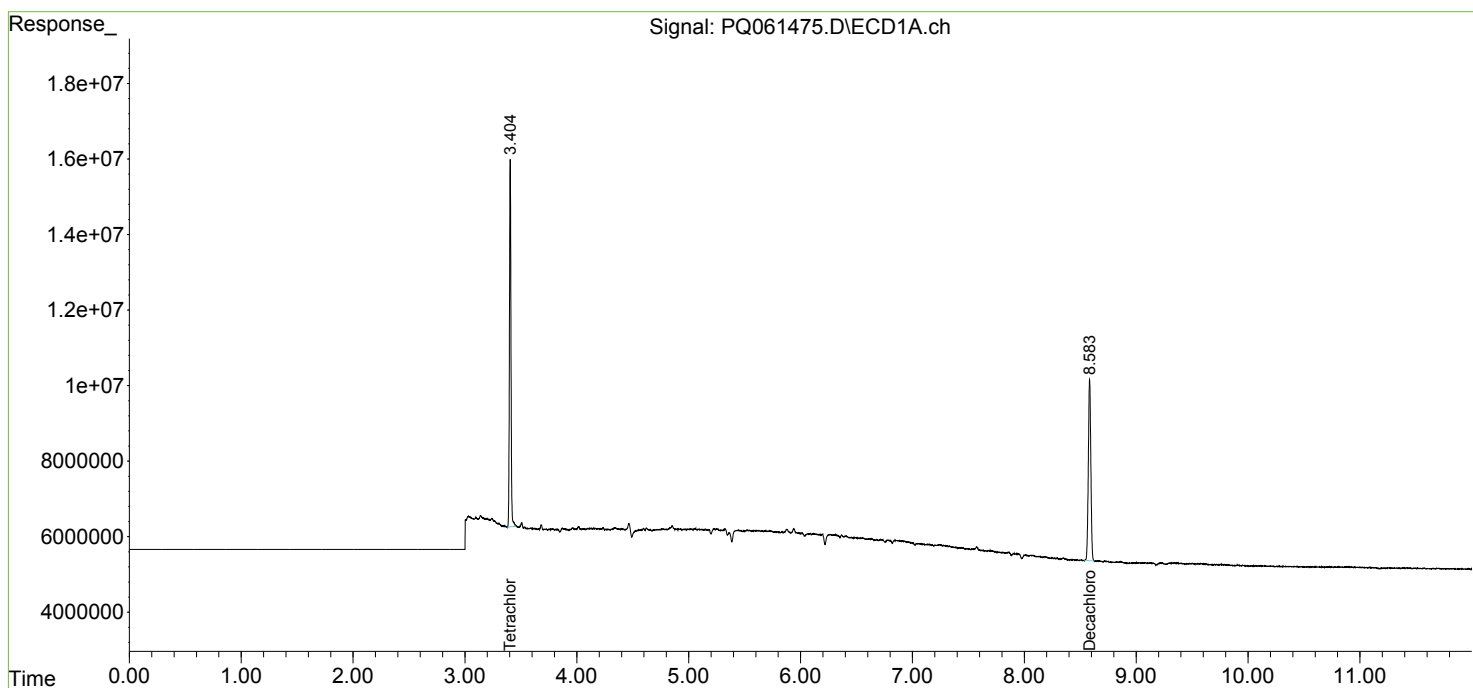
(f)=RT Delta > 1/2 Window (#)=Amounts differ by > 25% (m)=manual int.

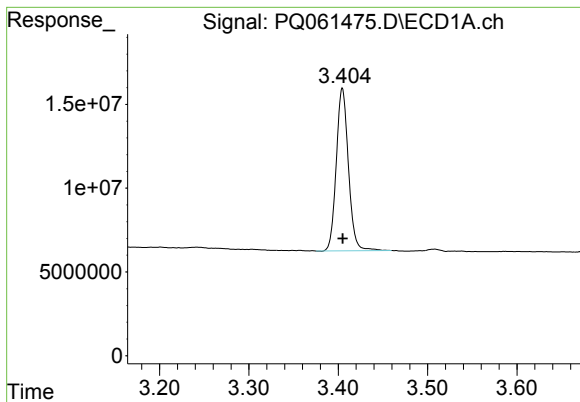
Data Path : Z:\pestpcbsrv\HPCHEM1\ECD_Q\Data\PQ061523\
 Data File : PQ061475.D
 Signal(s) : Signal #1: ECD1A.ch Signal #2: ECD2B.ch
 Acq On : 15 Jun 2023 23:22
 Operator : YP\AJ
 Sample : I.BLK
 Misc :
 ALS Vial : 2 Sample Multiplier: 1

Instrument :
 ECD_Q
 ClientSampleId :
 I.BLK

Integration File signal 1: autoint1.e
 Integration File signal 2: autoint2.e
 Quant Time: Jun 16 05:32:35 2023
 Quant Method : Z:\pestpcbsrv\HPCHEM1\ECD_Q\Method\PQ060923.M
 Quant Title : GC EXTRACTABLES
 QLast Update : Fri Jun 09 18:19:31 2023
 Response via : Initial Calibration
 Integrator: ChemStation

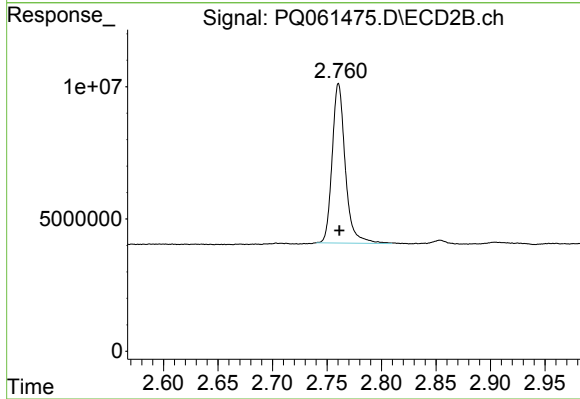
Volume Inj. : 2 µl
 Signal #1 Phase : ZB-MR1 Signal #2 Phase: ZB-MR2
 Signal #1 Info : 30Mx0.32mmx 0.50µ Signal #2 Info : 30M x 0.32mm x 0.25µm



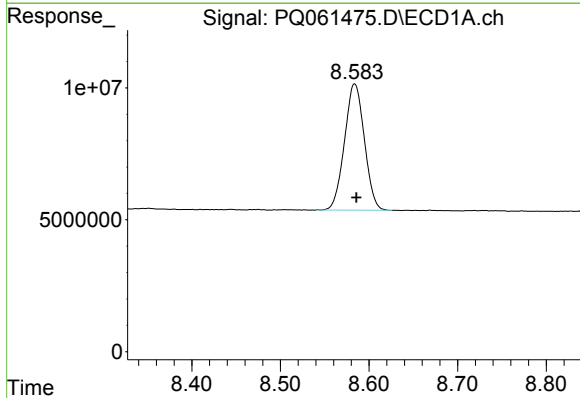


#1 Tetrachloro-m-xylene
 R.T.: 3.405 min
 Delta R.T.: 0.000 min
 Response: 91632733
 Conc: 20.39 ng/ml

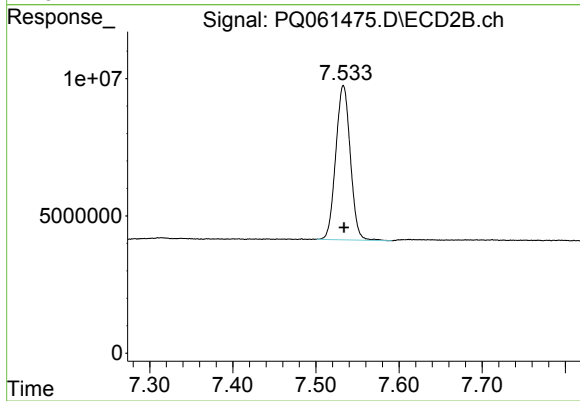
Instrument :
 ECD_Q
 ClientSampleId :
 I.BLK



#1 Tetrachloro-m-xylene
 R.T.: 2.761 min
 Delta R.T.: 0.000 min
 Response: 50469033
 Conc: 18.90 ng/ml



#2 Decachlorobiphenyl
 R.T.: 8.584 min
 Delta R.T.: -0.002 min
 Response: 74714596
 Conc: 22.18 ng/ml



#2 Decachlorobiphenyl
 R.T.: 7.533 min
 Delta R.T.: 0.000 min
 Response: 68274320
 Conc: 20.34 ng/ml