

Data Path : Z:\pestpcbsrv\HPCHEM1\ECD_Q\Data\PQ061720\
 Data File : PQ048442.D
 Signal(s) : Signal #1: ECD1A.ch Signal #2: ECD2B.ch
 Acq On : 17 Jun 2020 08:39
 Operator : AJ\MA
 Sample : I.BLK
 Misc :
 ALS Vial : 2 Sample Multiplier: 1

Instrument :
 ECD_Q
 ClientSampleId :

Integration File signal 1: autoint1.e
 Integration File signal 2: autoint2.e
 Quant Time: Jun 17 15:38:06 2020
 Quant Method : Z:\pestpcbsrv\HPCHEM1\ECD_Q\Method\PQ061720.M
 Quant Title : GC EXTRACTABLES
 QLast Update : Wed Jun 17 15:37:20 2020
 Response via : Initial Calibration
 Integrator: ChemStation

Volume Inj. : 2 µl
 Signal #1 Phase : ZB-MR1 Signal #2 Phase: ZB-MR2
 Signal #1 Info : 30Mx0.32mmx 0.50µ Signal #2 Info : 30M x 0.32mm x 0.25µm

Compound	RT#1	RT#2	Resp#1	Resp#2	ng/ml	ng/ml

System Monitoring Compounds						
1) SA Tetrachlo...	5.291	4.288	168.0E6	80515862	22.791	22.805
2) SA Decachlor...	11.562	9.659	207.1E6	100.4E6	21.408	20.871
Target Compounds						
9) L2 AR-1221-2	5.649	4.646	3447786	3321708	59.864	123.386 #
12) L3 AR-1232-2	6.345	0.000	1064415	0	16.062	N.D. #
43) L9 AR-1268-3	10.247	8.796	5551096	1740861	5.320	3.024 #
45) L9 AR-1268-5	11.189	0.000	3529538	0	0.983	N.D. #

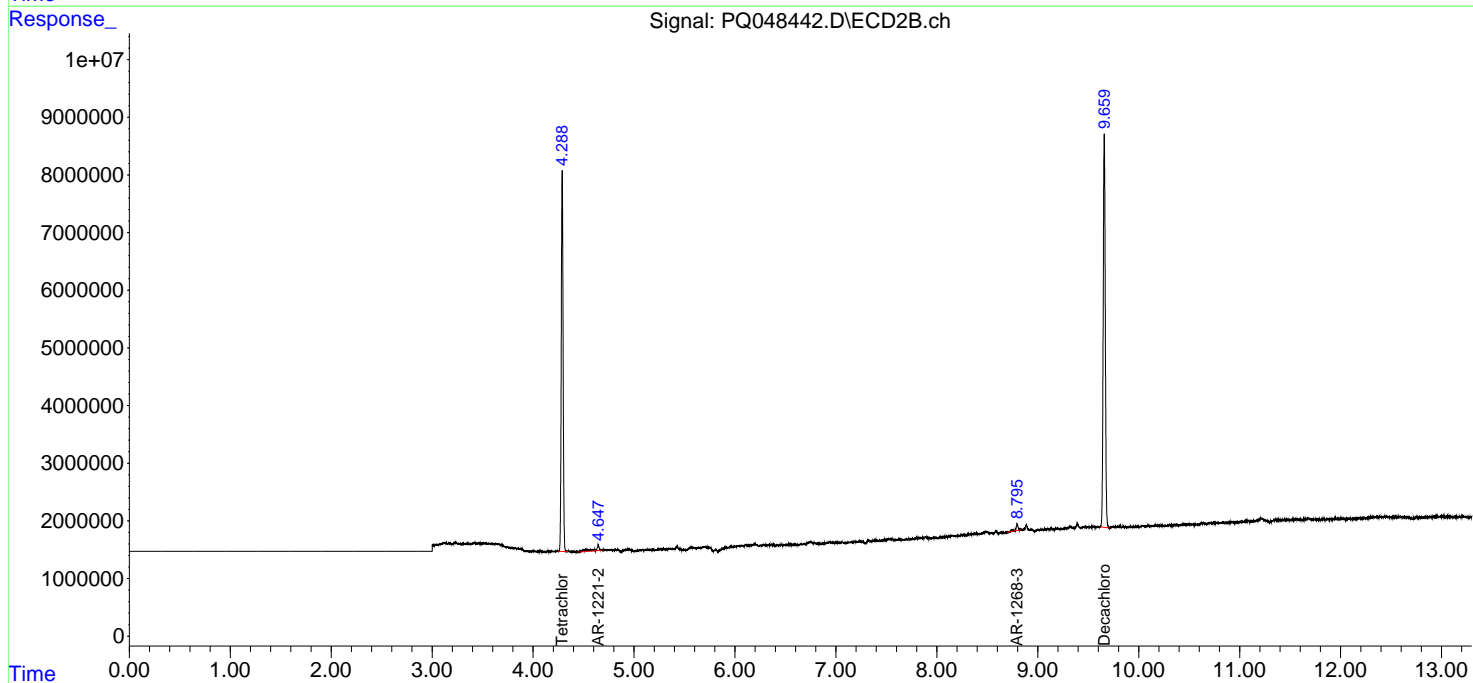
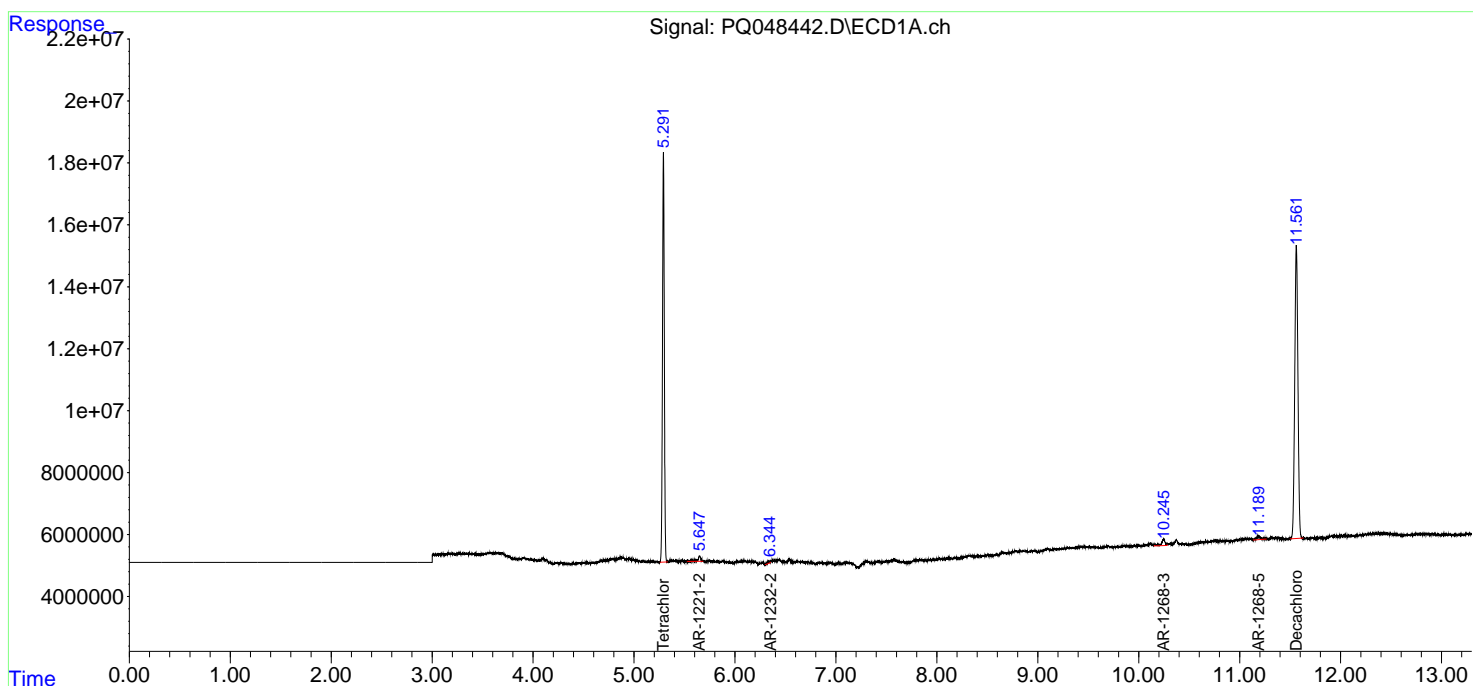
(f)=RT Delta > 1/2 Window (#)=Amounts differ by > 25% (m)=manual int.

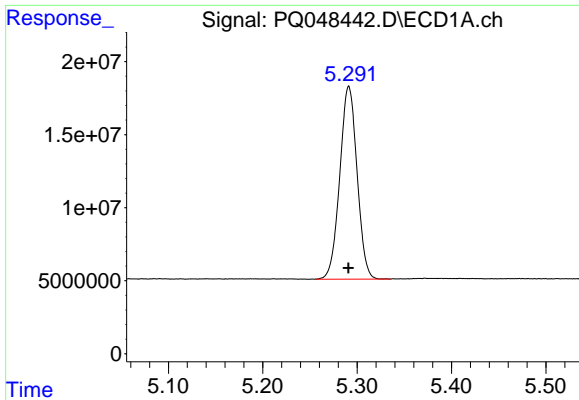
Data Path : Z:\pestpcbsrv\HPCHEM1\ECD_Q\Data\PQ061720\
 Data File : PQ048442.D
 Signal(s) : Signal #1: ECD1A.ch Signal #2: ECD2B.ch
 Acq On : 17 Jun 2020 08:39
 Operator : AJ\MA
 Sample : I.BLK
 Misc :
 ALS Vial : 2 Sample Multiplier: 1

Instrument :
 ECD_Q
 ClientSampleId :

Integration File signal 1: autoint1.e
 Integration File signal 2: autoint2.e
 Quant Time: Jun 17 15:38:06 2020
 Quant Method : Z:\pestpcbsrv\HPCHEM1\ECD_Q\Method\PQ061720.M
 Quant Title : GC EXTRACTABLES
 QLast Update : Wed Jun 17 15:37:20 2020
 Response via : Initial Calibration
 Integrator: ChemStation

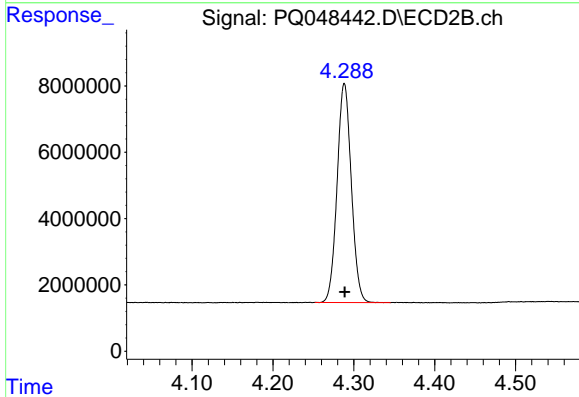
Volume Inj. : 2 µl
 Signal #1 Phase : ZB-MR1 Signal #2 Phase: ZB-MR2
 Signal #1 Info : 30Mx0.32mmx 0.50µ Signal #2 Info : 30M x 0.32mm x 0.25µm



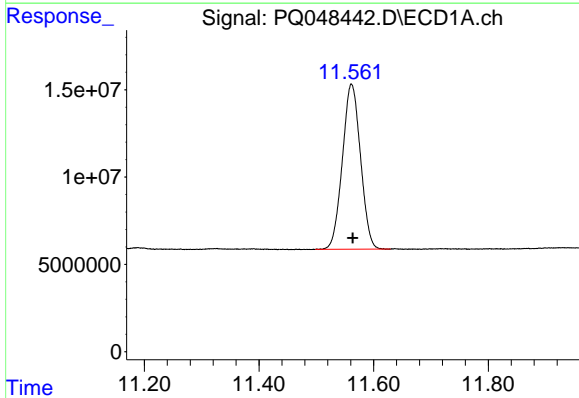


#1 Tetrachloro-m-xylene
 R.T.: 5.291 min
 Delta R.T.: 0.000 min
 Response: 167995383
 Conc: 22.79 ng/ml

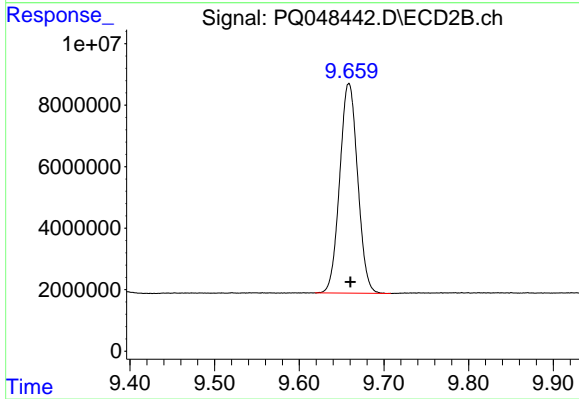
Instrument :
 ECD_Q
 ClientSampled :



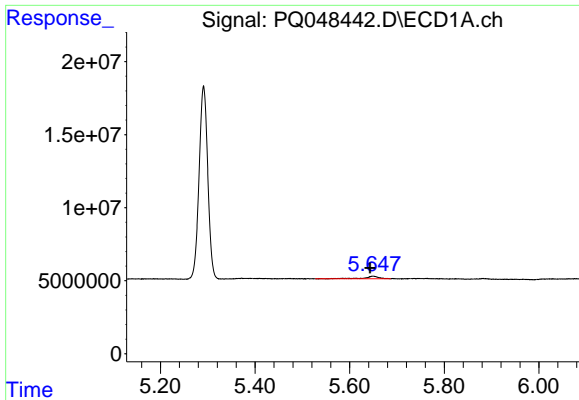
#1 Tetrachloro-m-xylene
 R.T.: 4.288 min
 Delta R.T.: 0.000 min
 Response: 80515862
 Conc: 22.81 ng/ml



#2 Decachlorobiphenyl
 R.T.: 11.562 min
 Delta R.T.: -0.002 min
 Response: 207140123
 Conc: 21.41 ng/ml

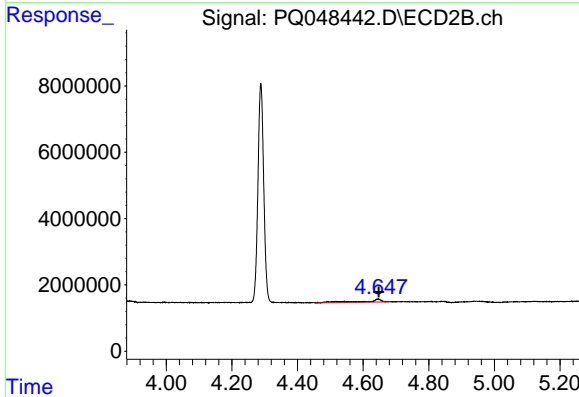


#2 Decachlorobiphenyl
 R.T.: 9.659 min
 Delta R.T.: -0.002 min
 Response: 100437949
 Conc: 20.87 ng/ml

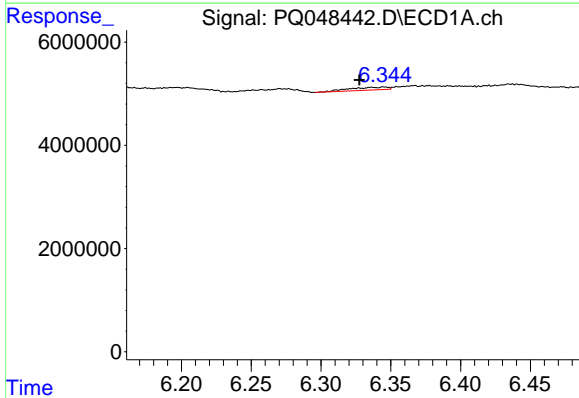


#9 AR-1221-2
 R.T.: 5.649 min
 Delta R.T.: 0.006 min
 Response: 3447786
 Conc: 59.86 ng/ml

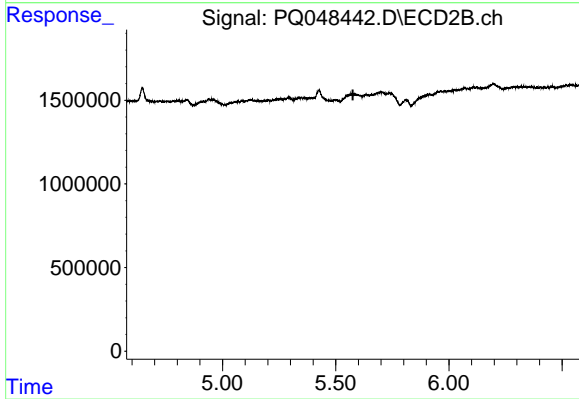
Instrument :
 ECD_Q
 ClientSampled :



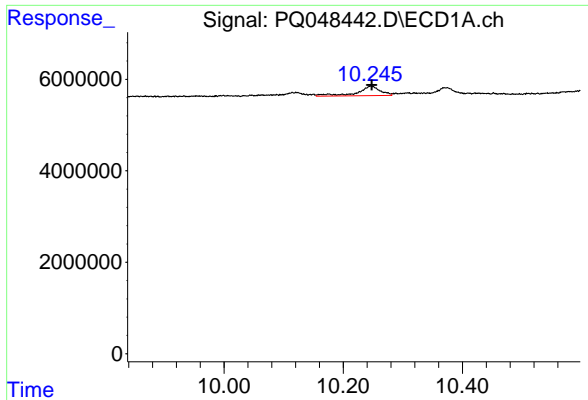
#9 AR-1221-2
 R.T.: 4.646 min
 Delta R.T.: -0.003 min
 Response: 3321708
 Conc: 123.39 ng/ml



#12 AR-1232-2
 R.T.: 6.345 min
 Delta R.T.: 0.018 min
 Response: 1064415
 Conc: 16.06 ng/ml

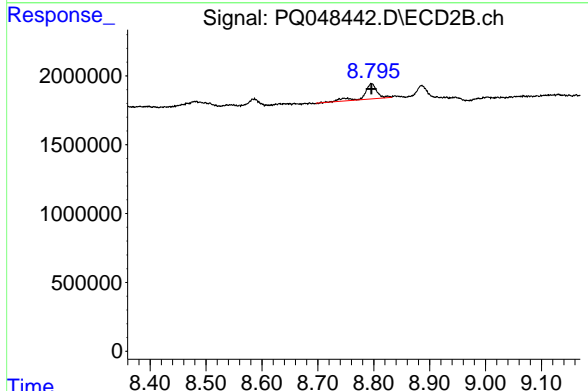


#12 AR-1232-2
 R.T.: 0.000 min
 Exp R.T. : 5.576 min
 Response: 0
 Conc: N.D.

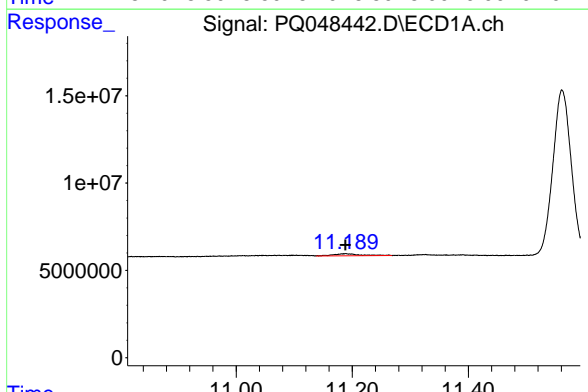


#43 AR-1268-3
 R.T.: 10.247 min
 Delta R.T.: -0.001 min
 Response: 5551096
 Conc: 5.32 ng/ml

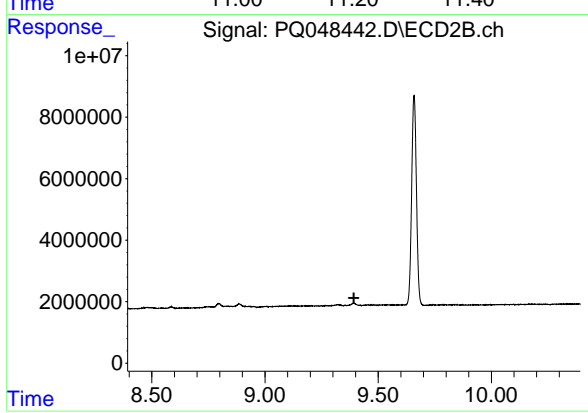
Instrument :
 ECD_Q
 ClientSampleId :



#43 AR-1268-3
 R.T.: 8.796 min
 Delta R.T.: 0.000 min
 Response: 1740861
 Conc: 3.02 ng/ml



#45 AR-1268-5
 R.T.: 11.189 min
 Delta R.T.: 0.000 min
 Response: 3529538
 Conc: 0.98 ng/ml



#45 AR-1268-5
 R.T.: 0.000 min
 Exp R.T. : 9.393 min
 Response: 0
 Conc: N.D.