

Data Path : Z:\pestpcbsrv\HPCHEM1\ECD_Q\Data\PQ061720\
 Data File : PQ048452.D
 Signal(s) : Signal #1: ECD1A.ch Signal #2: ECD2B.ch
 Acq On : 17 Jun 2020 11:22
 Operator : AJ\MA
 Sample : AR1254ICC500
 Misc :
 ALS Vial : 12 Sample Multiplier: 1

Instrument :
 ECD_Q
 ClientSampleId :

Integration File signal 1: autoint1.e
 Integration File signal 2: autoint2.e
 Quant Time: Jun 17 15:25:58 2020
 Quant Method : Z:\pestpcbsrv\HPCHEM1\ECD_Q\Method\PQ061720.M
 Quant Title : GC EXTRACTABLES
 QLast Update : Wed Jun 17 15:25:44 2020
 Response via : Initial Calibration
 Integrator: ChemStation

Volume Inj. : 2 µl
 Signal #1 Phase : ZB-MR1 Signal #2 Phase: ZB-MR2
 Signal #1 Info : 30Mx0.32mmx 0.50µ Signal #2 Info : 30M x 0.32mm x 0.25µm

Compound	RT#1	RT#2	Resp#1	Resp#2	ng/ml	ng/ml

System Monitoring Compounds						
1) SA Tetrachlo...	5.291	4.289	336.2E6	160.8E6	50.000	50.000
2) SA Decachlor...	11.562	9.660	505.3E6	252.8E6	50.000	50.000
Target Compounds						
26) L6 AR-1254-1	7.536	6.430	151.3E6	111.8E6	500.000	500.000
27) L6 AR-1254-2	7.766	6.588	239.6E6	99378861	500.000	500.000
28) L6 AR-1254-3	8.152	7.011	263.3E6	171.8E6	500.000	500.000
29) L6 AR-1254-4	8.449	7.249	206.4E6	112.7E6	500.000	500.000
30) L6 AR-1254-5	8.880	7.679	228.7E6	158.3E6	500.000	500.000

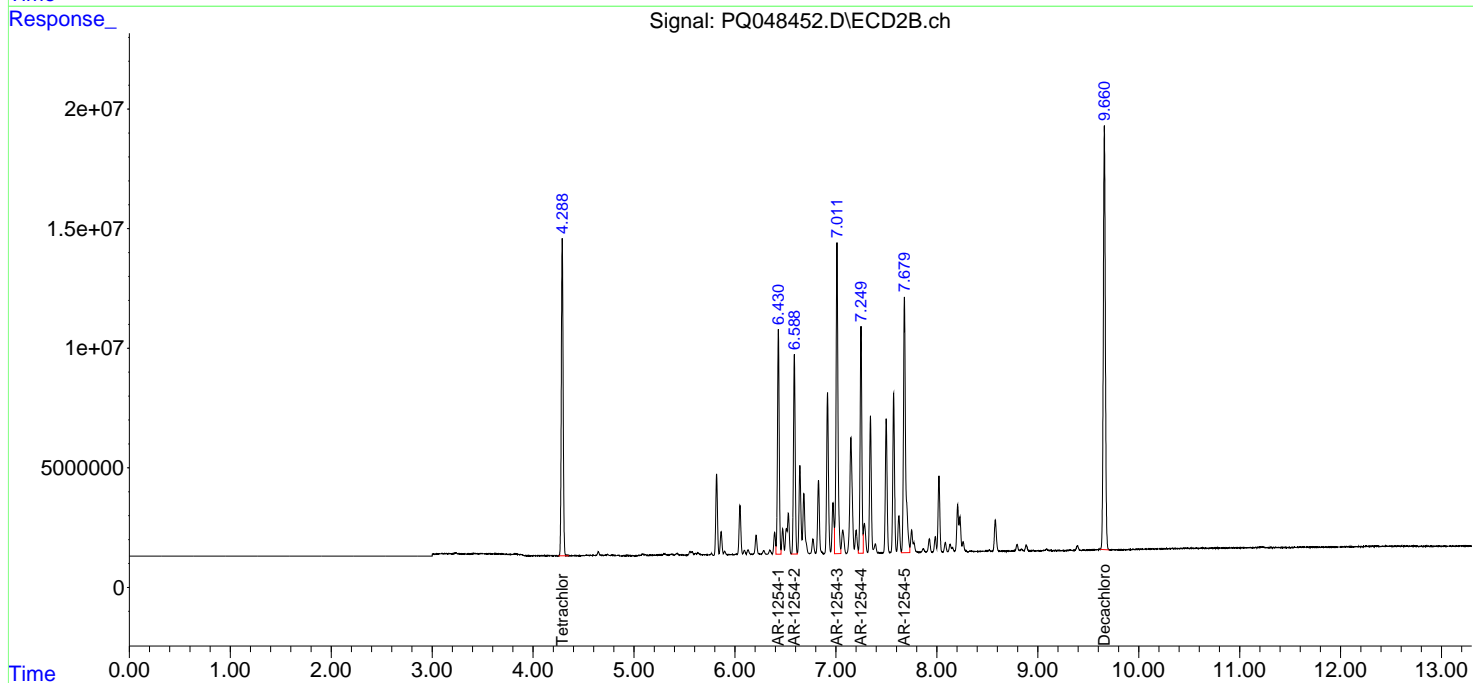
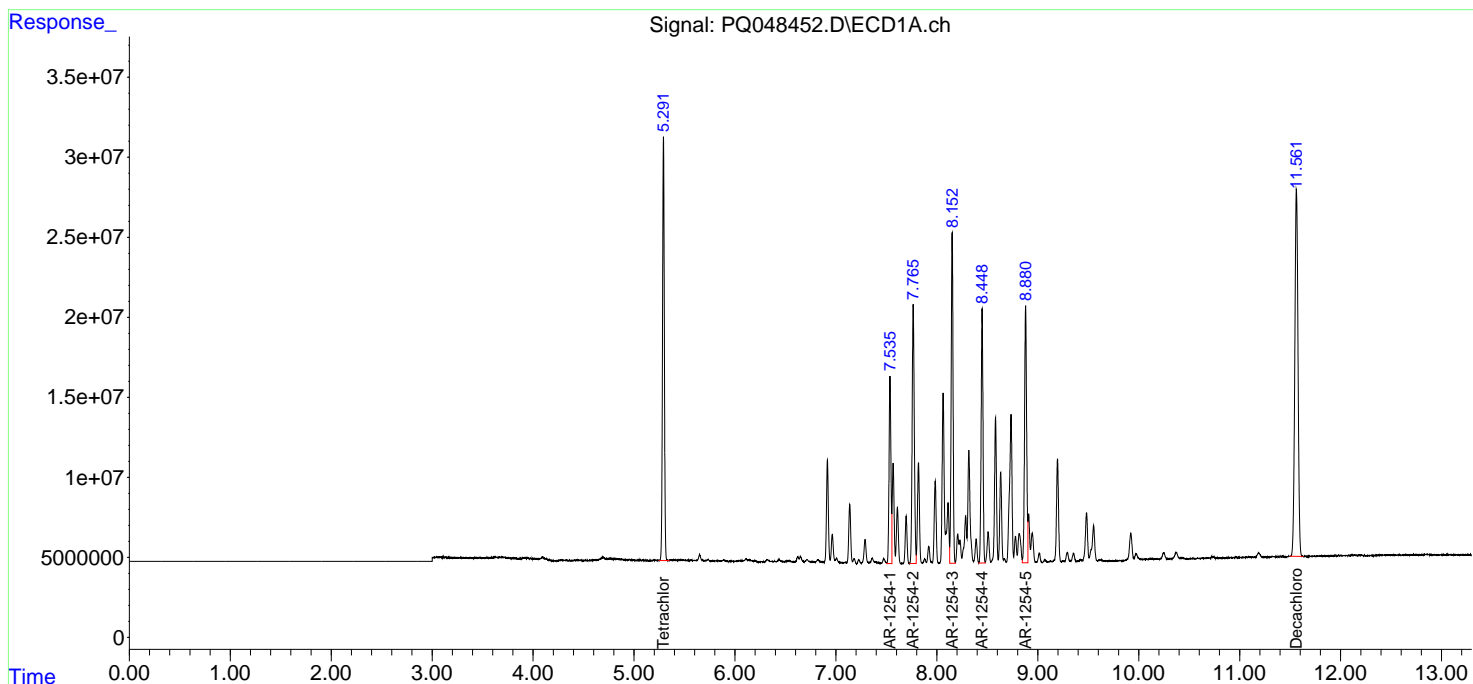
(f)=RT Delta > 1/2 Window (#)=Amounts differ by > 25% (m)=manual int.

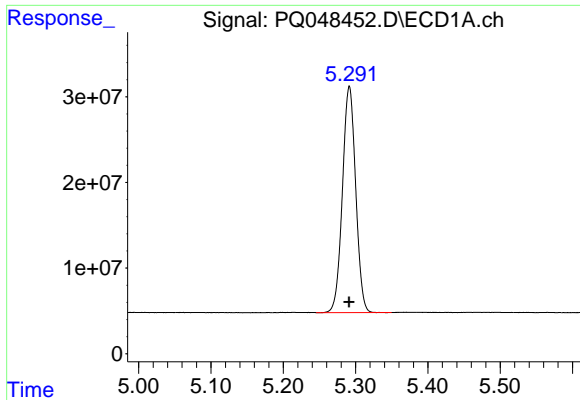
Data Path : Z:\pestpcbsrv\HPCHEM1\ECD_Q\Data\PQ061720\
 Data File : PQ048452.D
 Signal(s) : Signal #1: ECD1A.ch Signal #2: ECD2B.ch
 Acq On : 17 Jun 2020 11:22
 Operator : AJ\MA
 Sample : AR1254ICC500
 Misc :
 ALS Vial : 12 Sample Multiplier: 1

Instrument :
 ECD_Q
 ClientSampled :

Integration File signal 1: autoint1.e
 Integration File signal 2: autoint2.e
 Quant Time: Jun 17 15:25:58 2020
 Quant Method : Z:\pestpcbsrv\HPCHEM1\ECD_Q\Method\PQ061720.M
 Quant Title : GC EXTRACTABLES
 QLast Update : Wed Jun 17 15:25:44 2020
 Response via : Initial Calibration
 Integrator: ChemStation

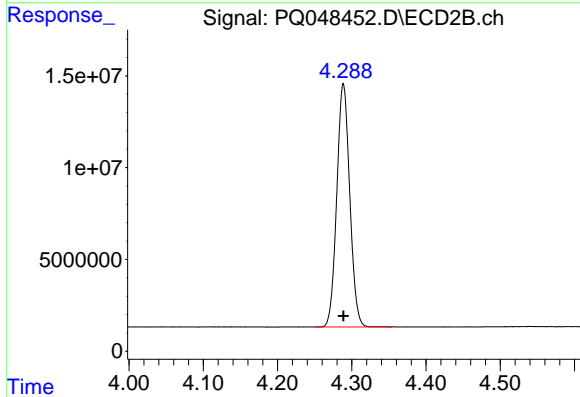
Volume Inj. : 2 µl
 Signal #1 Phase : ZB-MR1 Signal #2 Phase: ZB-MR2
 Signal #1 Info : 30Mx0.32mmx 0.50µm Signal #2 Info : 30M x 0.32mm x 0.25µm



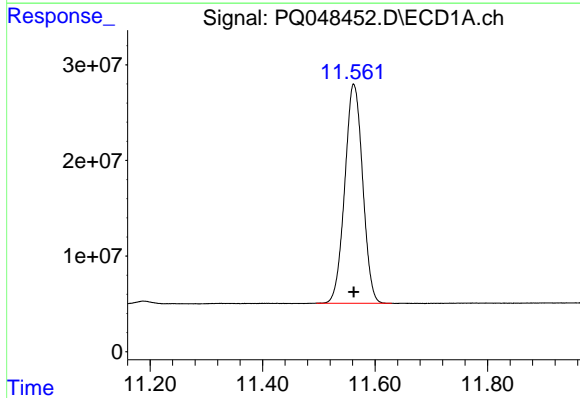


#1 Tetrachloro-m-xylene
 R.T.: 5.291 min
 Delta R.T.: 0.000 min
 Response: 336242868
 Conc: 50.00 ng/ml

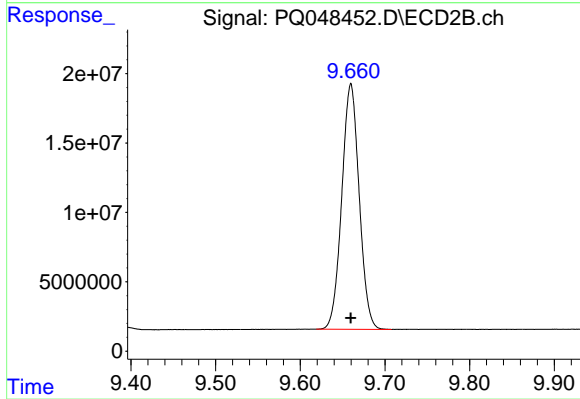
Instrument :
 ECD_Q
 ClientSampleId :



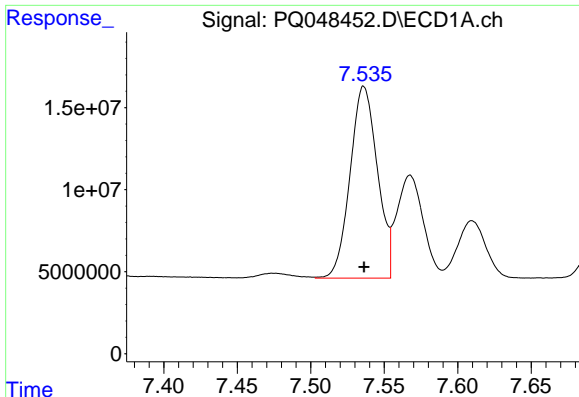
#1 Tetrachloro-m-xylene
 R.T.: 4.289 min
 Delta R.T.: 0.000 min
 Response: 160797542
 Conc: 50.00 ng/ml



#2 Decachlorobiphenyl
 R.T.: 11.562 min
 Delta R.T.: 0.000 min
 Response: 505281549
 Conc: 50.00 ng/ml



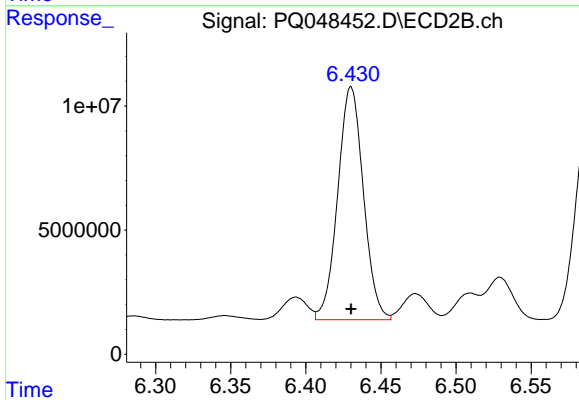
#2 Decachlorobiphenyl
 R.T.: 9.660 min
 Delta R.T.: 0.000 min
 Response: 252779326
 Conc: 50.00 ng/ml



#26 AR-1254-1

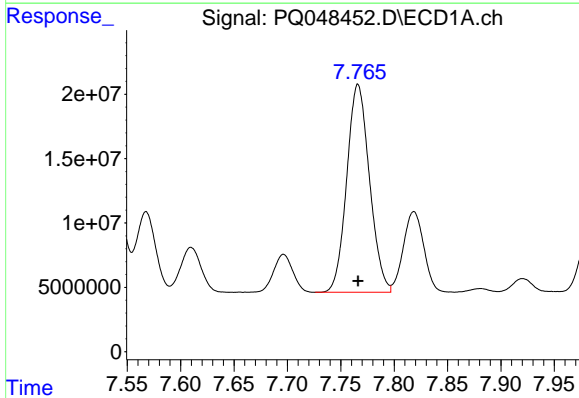
R.T.: 7.536 min
 Delta R.T.: 0.000 min
 Response: 151276298
 Conc: 500.00 ng/ml

Instrument :
 ECD_Q
 ClientSampleId :



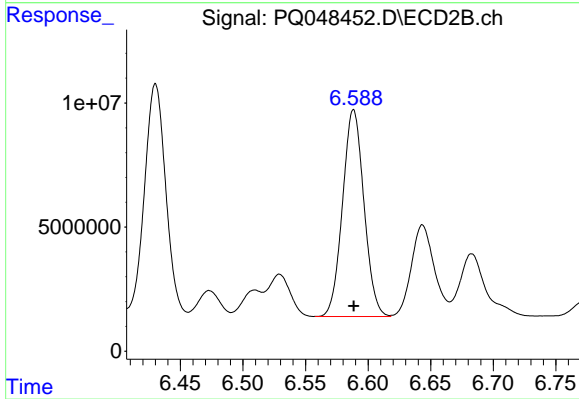
#26 AR-1254-1

R.T.: 6.430 min
 Delta R.T.: 0.000 min
 Response: 111834682
 Conc: 500.00 ng/ml



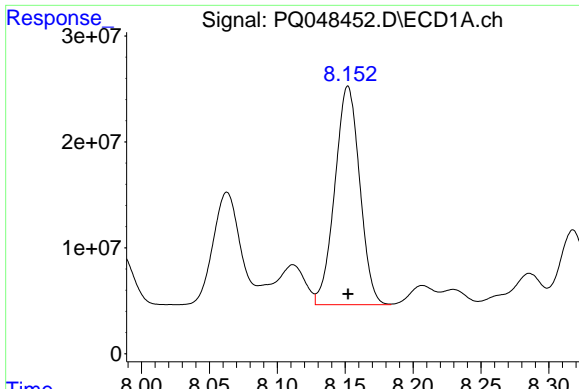
#27 AR-1254-2

R.T.: 7.766 min
 Delta R.T.: 0.000 min
 Response: 239597817
 Conc: 500.00 ng/ml



#27 AR-1254-2

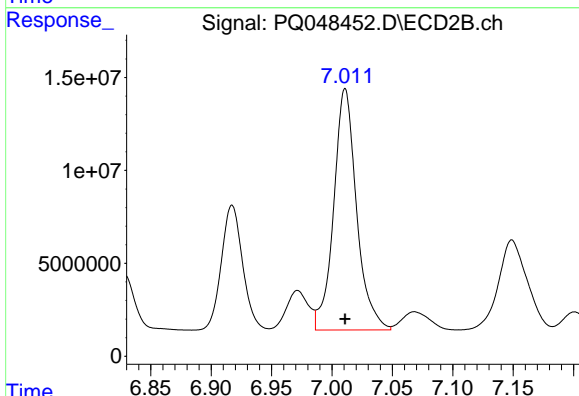
R.T.: 6.588 min
 Delta R.T.: 0.000 min
 Response: 99378861
 Conc: 500.00 ng/ml



#28 AR-1254-3

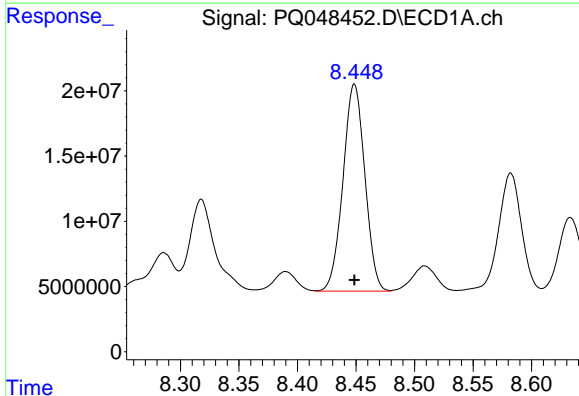
R.T.: 8.152 min
Delta R.T.: 0.000 min
Response: 263341158
Conc: 500.00 ng/ml

Instrument :
ECD_Q
ClientSampleId :



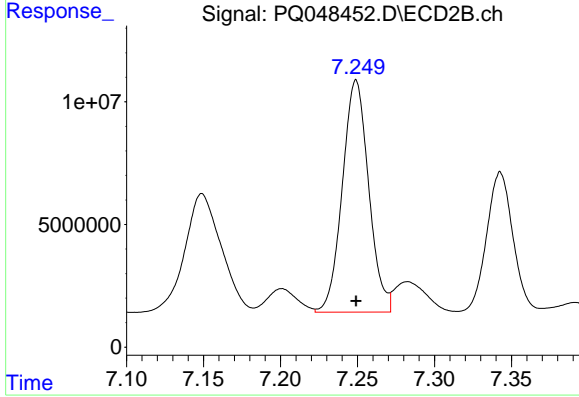
#28 AR-1254-3

R.T.: 7.011 min
Delta R.T.: 0.000 min
Response: 171765741
Conc: 500.00 ng/ml



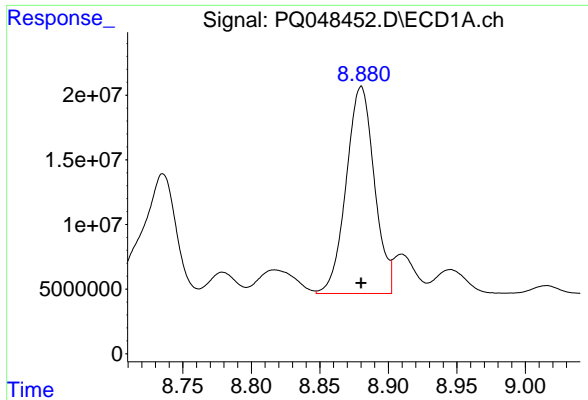
#29 AR-1254-4

R.T.: 8.449 min
Delta R.T.: 0.000 min
Response: 206407880
Conc: 500.00 ng/ml



#29 AR-1254-4

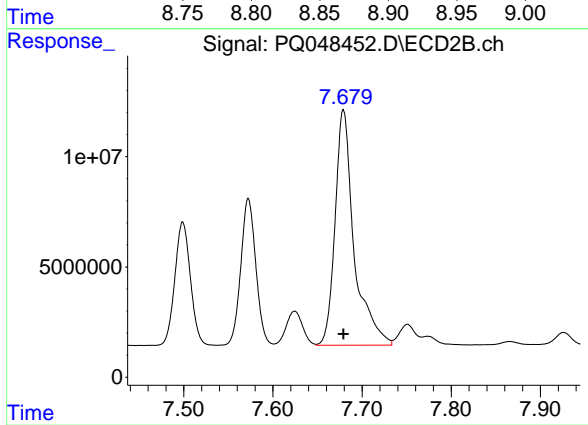
R.T.: 7.249 min
Delta R.T.: 0.000 min
Response: 112700187
Conc: 500.00 ng/ml



#30 AR-1254-5

R.T.: 8.880 min
Delta R.T.: 0.000 min
Response: 228717110
Conc: 500.00 ng/ml

Instrument :
ECD_Q
ClientSampleId :



#30 AR-1254-5

R.T.: 7.679 min
Delta R.T.: 0.000 min
Response: 158328628
Conc: 500.00 ng/ml